

Data Path : Z:\VOASRV\HPCHEM1\MSVOA V\DATA\VV081220\
 Data File : VV017945.D
 Acq On : 12 Aug 2020 23:23
 Operator : SY/MD
 Sample : L3644-08
 Misc : 5.0mL/MSVOA V/WATER
 ALS Vial : 34 Sample Multiplier: 1

Instrument :
 MSVOA_V
 Client Sampled :
 F2L64

Quant Time: Aug 13 06:01:25 2020
 Quant Method : Z:\VOASRV\HPCHEM1\MSVOA_V\METHOD\SOMVLM081120WMA.M
 Quant Title : VOC Analysis
 QLast Update : Thu Aug 13 05:58:58 2020
 Response via : Initial Calibration

Internal Standards	R.T.	QIon	Response	Conc	Units	Dev(Min)
1) 1,4-Difluorobenzene	5.64	114	249871	50.00	ug/L	0.00
28) Chlorobenzene-d5	8.87	117	243079	50.00	ug/L	0.00
60) 1,4-Dichlorobenzene-d4	11.27	152	110057	50.00	ug/L	0.00

System Monitoring Compounds

4) Vinyl Chloride-d3	1.32	65	84072	44.10	ug/L	0.00
Spiked Amount	50.000	Range	60 - 135	Recovery	=	88.20%
7) Chloroethane-d5	1.58	69	71416	45.79	ug/L	0.00
Spiked Amount	50.000	Range	70 - 130	Recovery	=	91.58%
11) 1,1-Dichloroethene-d2	2.12	63	124308	34.09	ug/L	0.00
Spiked Amount	50.000	Range	60 - 125	Recovery	=	68.18%
21) 2-Butanone-d5	3.92	46	121453	97.26	ug/L	0.00
Spiked Amount	100.000	Range	40 - 130	Recovery	=	97.26%
24) Chloroform-d	4.38	84	155702	44.86	ug/L	0.00
Spiked Amount	50.000	Range	70 - 125	Recovery	=	89.72%
26) 1,2-Dichloroethane-d4	5.06	65	111862	49.63	ug/L	0.00
Spiked Amount	50.000	Range	70 - 125	Recovery	=	99.26%
32) Benzene-d6	5.08	84	320166	47.79	ug/L	0.00
Spiked Amount	50.000	Range	70 - 125	Recovery	=	95.58%
36) 1,2-Dichloropropane-d6	6.09	67	106045	48.42	ug/L	0.00
Spiked Amount	50.000	Range	70 - 120	Recovery	=	96.84%
41) Toluene-d8	7.34	98	280110	46.49	ug/L	0.00
Spiked Amount	50.000	Range	80 - 120	Recovery	=	92.98%
43) trans-1,3-Dichloropropene-	7.64	79	43514	43.81	ug/L	0.00
Spiked Amount	50.000	Range	60 - 125	Recovery	=	87.62%
47) 2-Hexanone-d5	8.11	63	60080	85.48	ug/L	0.00
Spiked Amount	100.000	Range	45 - 130	Recovery	=	85.48%
57) 1,1,2,2-Tetrachloroethane-	10.24	84	131613	46.15	ug/L	0.00
Spiked Amount	50.000	Range	65 - 120	Recovery	=	92.30%
64) 1,2-Dichlorobenzene-d4	11.65	152	111198	51.34	ug/L	0.00
Spiked Amount	50.000	Range	80 - 120	Recovery	=	102.68%

Target Compounds

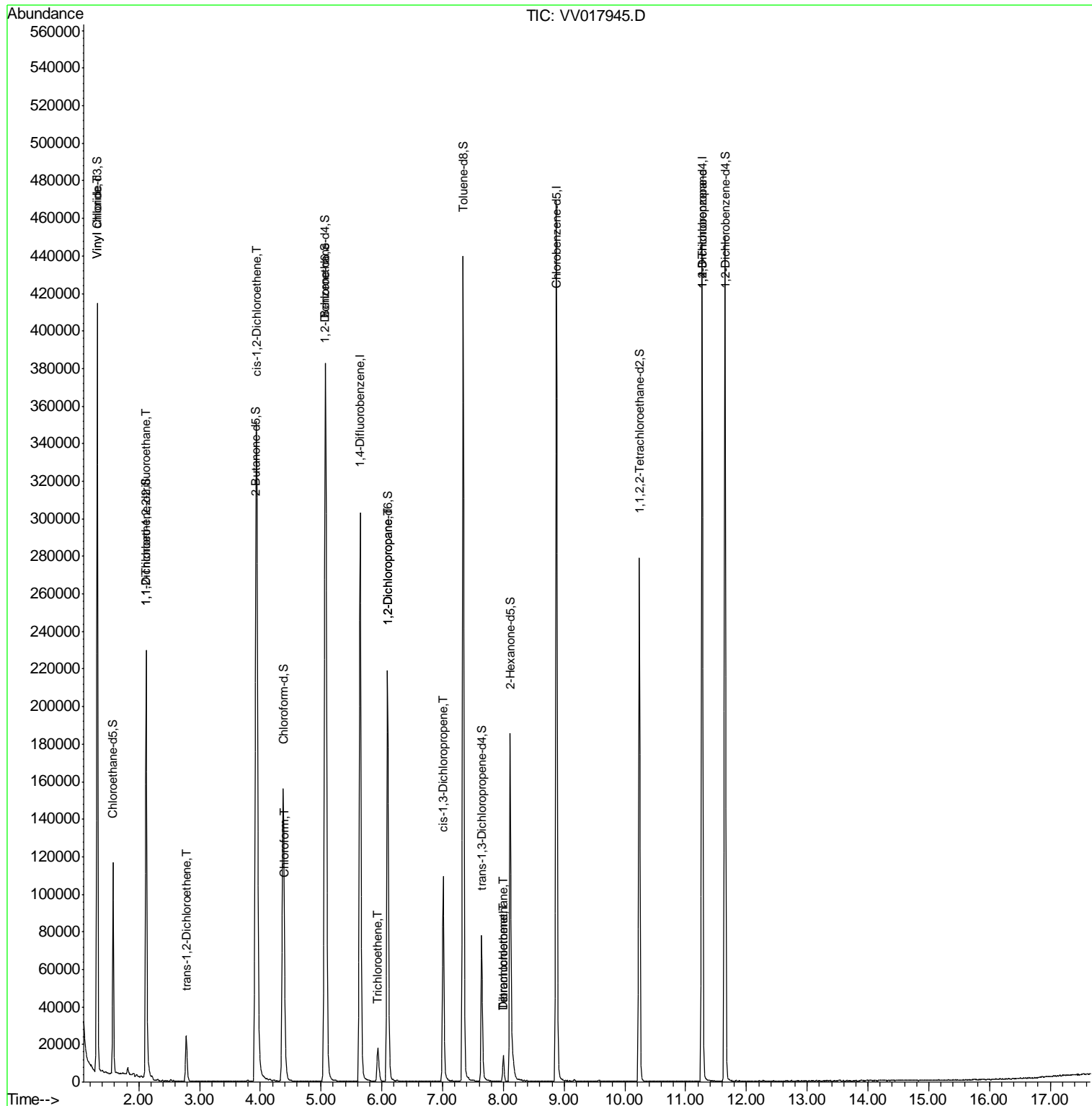
Target Compounds	R.T.	QIon	Response	Conc	Units	Ovalue
5) Vinyl chloride	1.32	62	177801	80.081	ug/L	99
10) 1,1,2-Trichloro-1,2,2-trif	2.12	101	1170	0.661	ug/L #	20
17) trans-1,2-Dichloroethene	2.78	96	9182	5.329	ug/L	98
20) cis-1,2-Dichloroethene	3.94	96	175062	92.460	ug/L	99
25) Chloroform	4.41	83	7248	2.051	ug/L	95
34) Trichloroethene	5.94	95	2782	1.399	ug/L	91
37) 1,2-Dichloropropane	6.09	63	11709	5.709	ug/L #	87
39) cis-1,3-Dichloropropene	7.01	75	2567	0.883	ug/L #	65
46) Tetrachloroethene	8.00	164	3168	2.173	ug/L	95
49) Dibromochloromethane	8.00	129	3048	1.644	ug/L #	10
59) 1,2,3-Trichloropropane	11.27	75	13623	5.378	ug/L	94

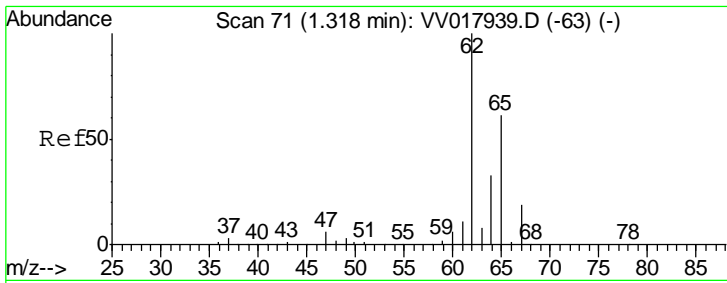
(#) = qualifier out of range (m) = manual integration (+) = signals summed

Data Path : Z:\VOASRV\HPCHEM1\MSVOA V\DATA\VV081220\
 Data File : VV017945.D
 Acq On : 12 Aug 2020 23:23
 Operator : SY/MD
 Sample : L3644-08
 Misc : 5.0mL/MSVOA V/WATER
 ALS Vial : 34 Sample Multiplier: 1

Instrument :
 MSVOA_V
 Client Sampled :
 F2L64

Quant Time: Aug 13 06:01:25 2020
 Quant Method : Z:\VOASRV\HPCHEM1\MSVOA_V\METHOD\SOMVLM081120WMA.M
 Quant Title : VOC Analysis
 QLast Update : Thu Aug 13 05:58:58 2020
 Response via : Initial Calibration

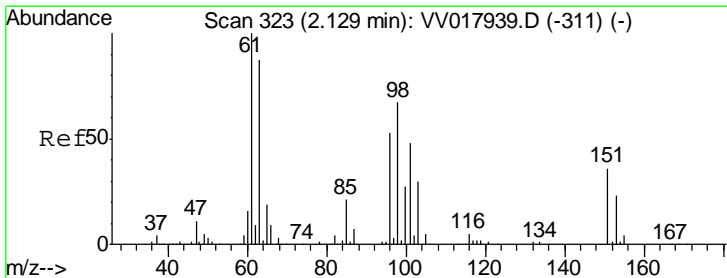
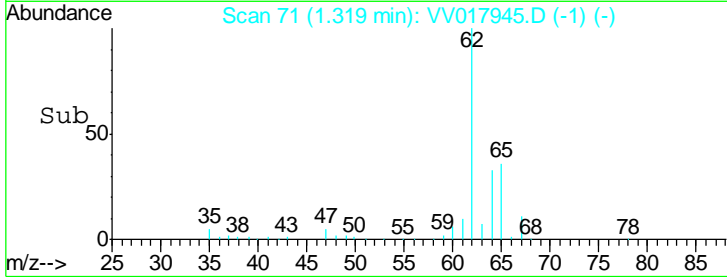
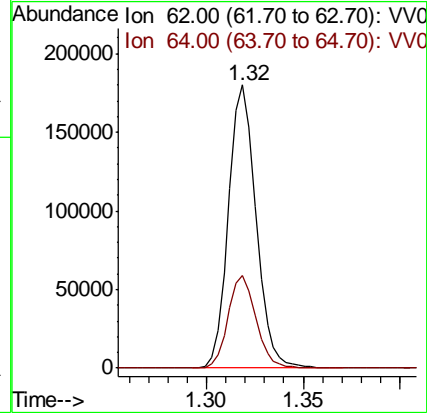
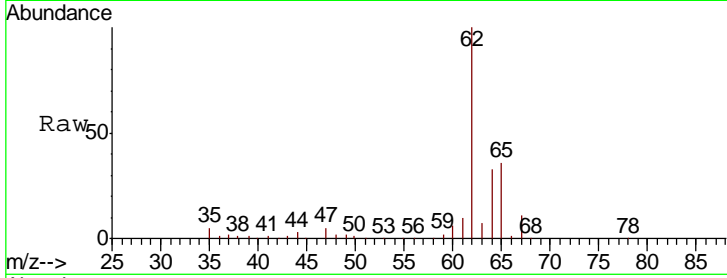




#5
 Vinyl chloride
 Concen: 80.081 ug/L
 RT: 1.32 min Scan# 71
 Delta R.T. 0.00 min
 Lab File: VV017945.D
 Acq: 12 Aug 2020 23:23

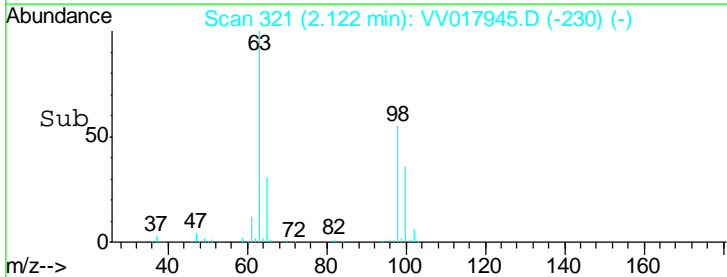
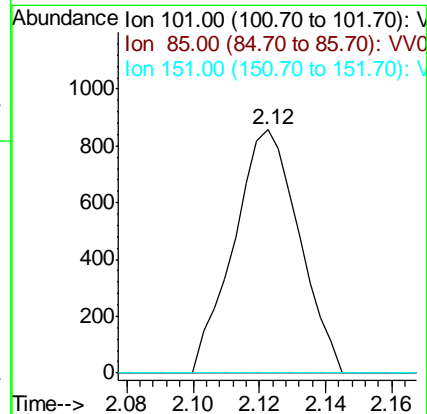
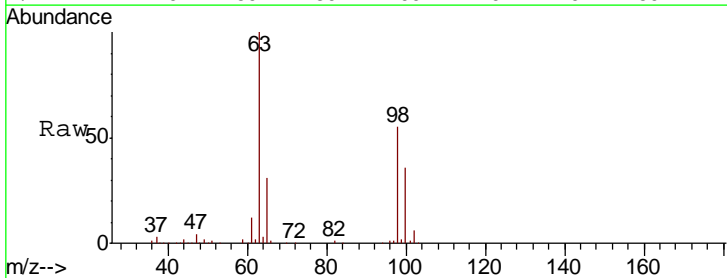
Instrument :
 MSVOA_V
 ClientSampled :
 F2L64

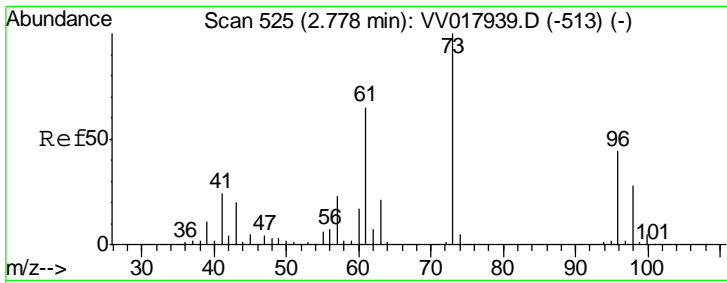
Tgt Ion	Resp	Lower	Upper
62	177801		
64	32.6	22.4	41.6



#10
 1,1,2-Trichloro-1,2,2-trifluoroethane
 Concen: 0.661 ug/L
 RT: 2.12 min Scan# 321
 Delta R.T. -0.01 min
 Lab File: VV017945.D
 Acq: 12 Aug 2020 23:23

Tgt Ion	Resp	Lower	Upper
101	1170		
85	0.0	34.9	52.3#
151	0.0	59.1	88.7#



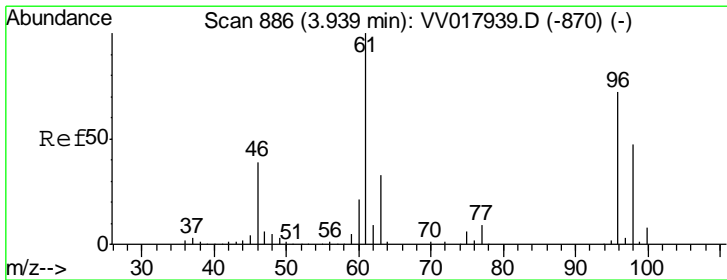
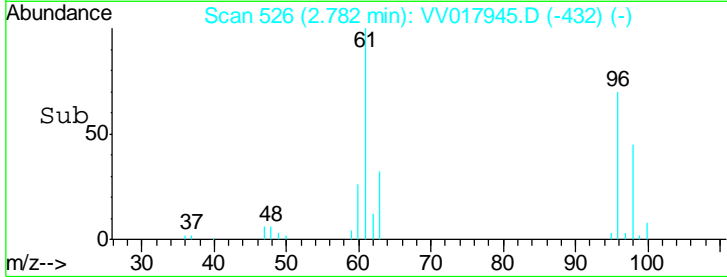
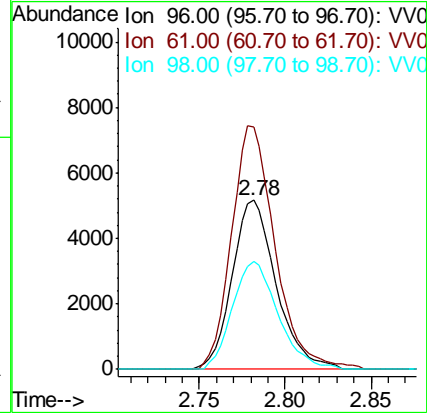
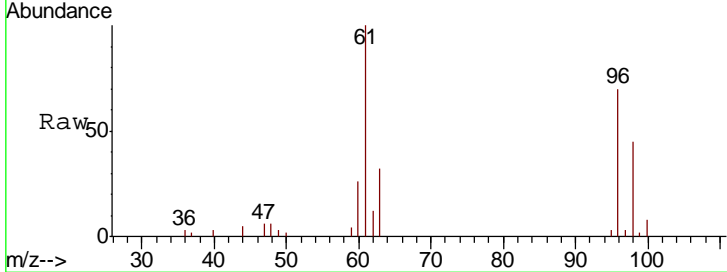


#17
 trans-1,2-Dichloroethene
 Concen: 5.329 ug/L
 RT: 2.78 min Scan# 526
 Delta R.T. 0.00 min
 Lab File: VV017945.D
 Acq: 12 Aug 2020 23:23

Instrument :
 MSVOA_V
 ClientSampled :
 F2L64

Tgt Ion: 96 Resp: 9182

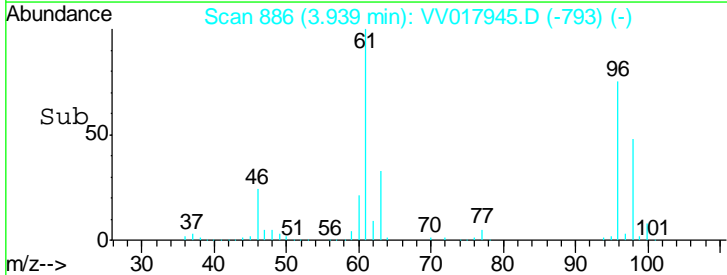
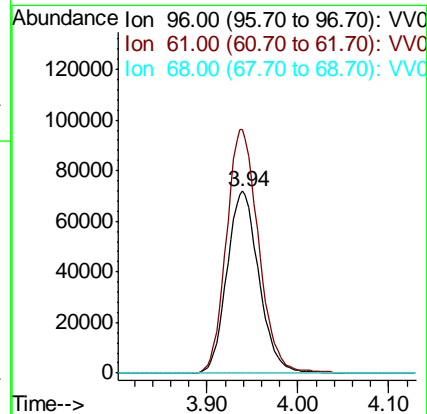
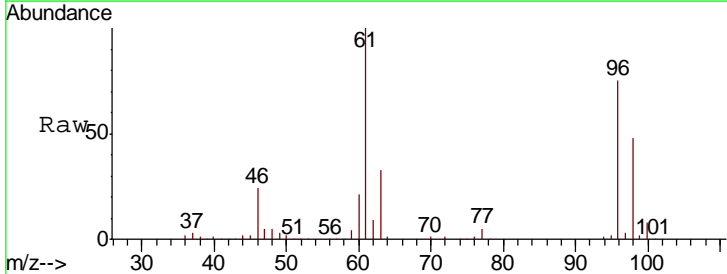
Ion	Ratio	Lower	Upper
96	100		
61	143.4	102.4	190.2
98	63.9	44.4	82.5

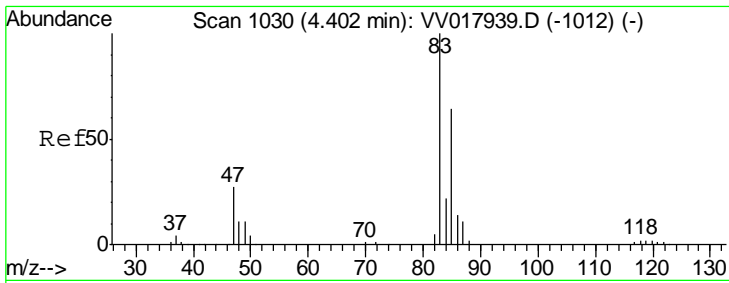


#20
 cis-1,2-Dichloroethene
 Concen: 92.460 ug/L
 RT: 3.94 min Scan# 886
 Delta R.T. 0.00 min
 Lab File: VV017945.D
 Acq: 12 Aug 2020 23:23

Tgt Ion: 96 Resp: 175062

Ion	Ratio	Lower	Upper
96	100		
61	134.1	95.0	176.4
68	0.0	0.0	0.0

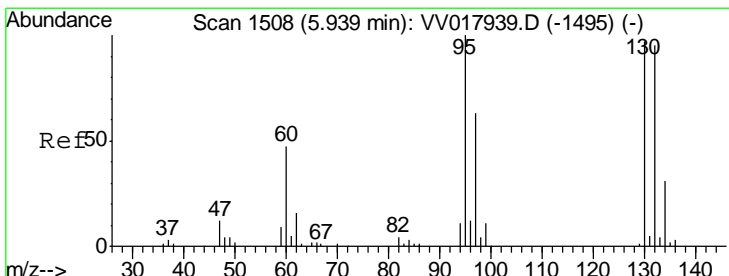
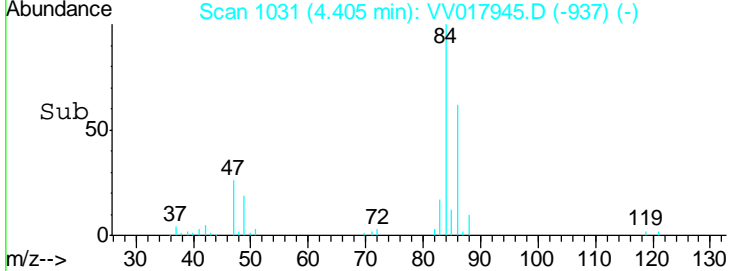
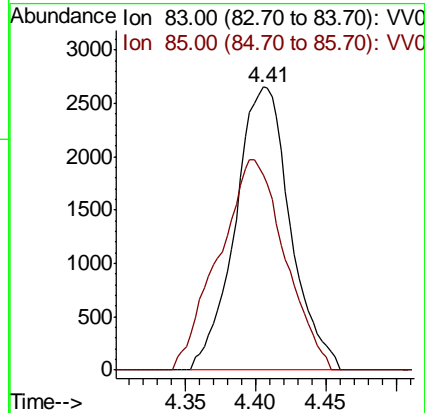
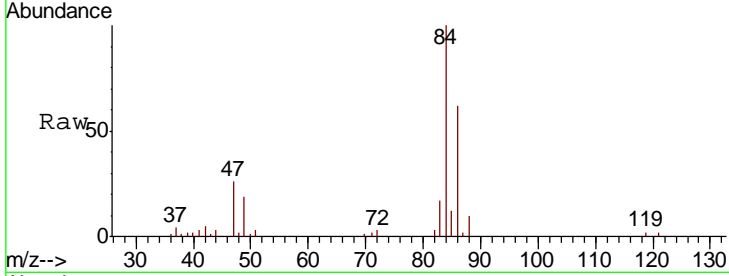




#25
 Chloroform
 Concen: 2.051 ug/L
 RT: 4.41 min Scan# 1031
 Delta R.T. 0.00 min
 Lab File: VV017945.D
 Acq: 12 Aug 2020 23:23

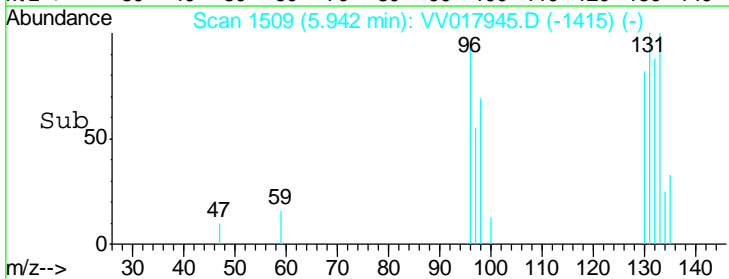
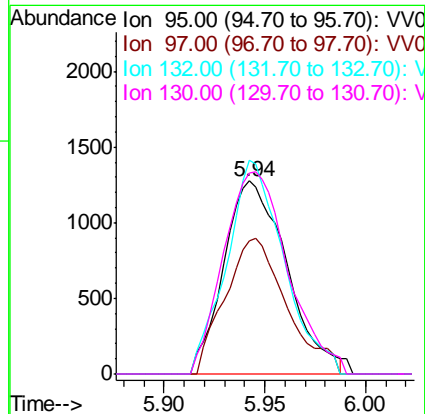
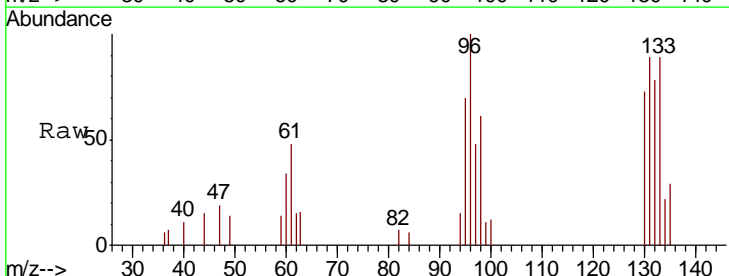
Instrument :
 MSVOA_V
 ClientSampled :
 F2L64

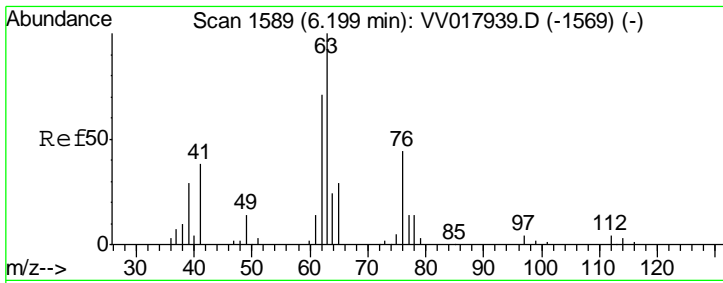
Tgt Ion	Resp	Lower	Upper
83	100		
85	69.1	45.5	84.5



#34
 Trichloroethene
 Concen: 1.399 ug/L
 RT: 5.94 min Scan# 1509
 Delta R.T. 0.00 min
 Lab File: VV017945.D
 Acq: 12 Aug 2020 23:23

Tgt Ion	Resp	Lower	Upper
95	100		
97	69.0	46.0	85.4
132	110.7	65.8	122.2
130	103.8	69.2	128.6

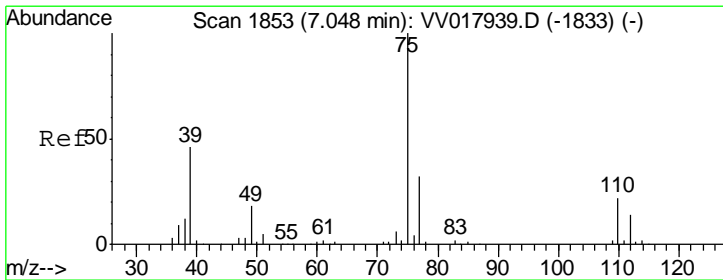
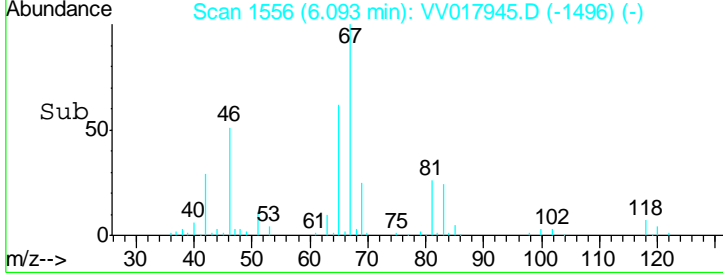
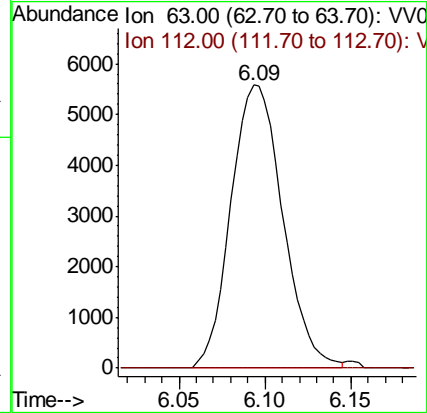
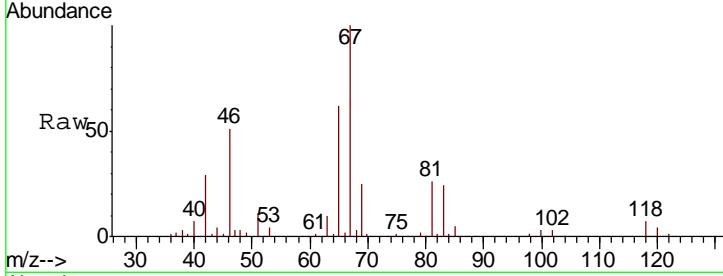




#37
 1,2-Dichloropropane
 Concen: 5.709 ug/L
 RT: 6.09 min Scan# 1556
 Delta R.T. -0.11 min
 Lab File: VV017945.D
 Acq: 12 Aug 2020 23:23

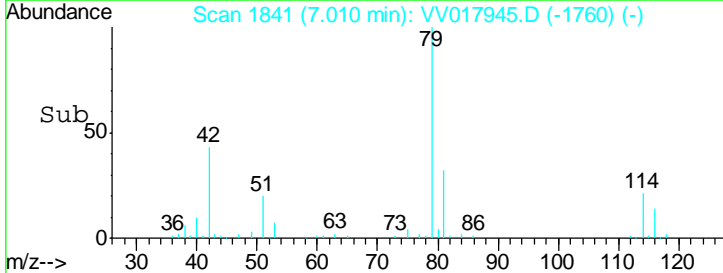
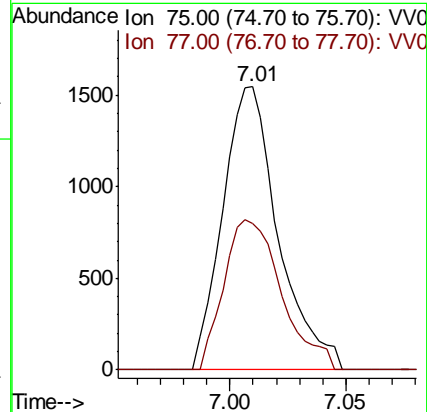
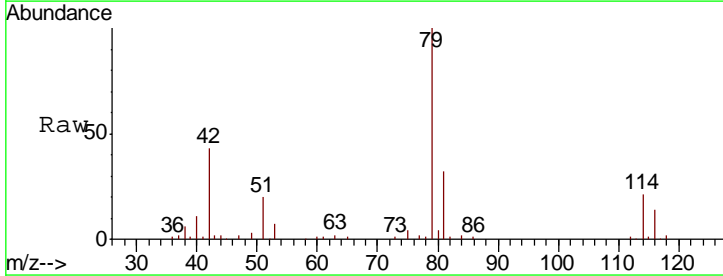
Instrument :
 MSVOA_V
 ClientSampled :
 F2L64

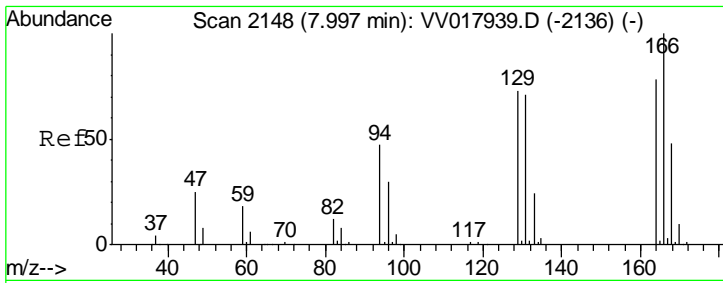
Tgt Ion: 63 Resp: 11709
 Ion Ratio Lower Upper
 63 100
 112 0.0 3.5 5.3#



#39
 cis-1,3-Dichloropropene
 Concen: 0.883 ug/L
 RT: 7.01 min Scan# 1841
 Delta R.T. -0.04 min
 Lab File: VV017945.D
 Acq: 12 Aug 2020 23:23

Tgt Ion: 75 Resp: 2567
 Ion Ratio Lower Upper
 75 100
 77 51.6 22.3 41.5#



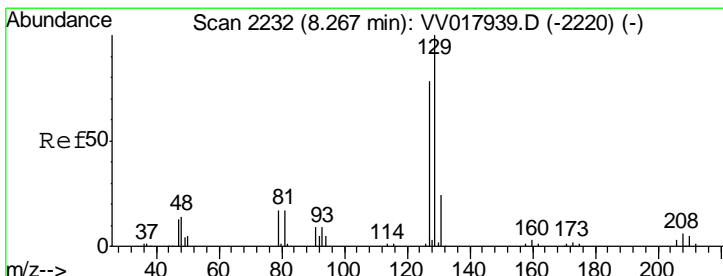
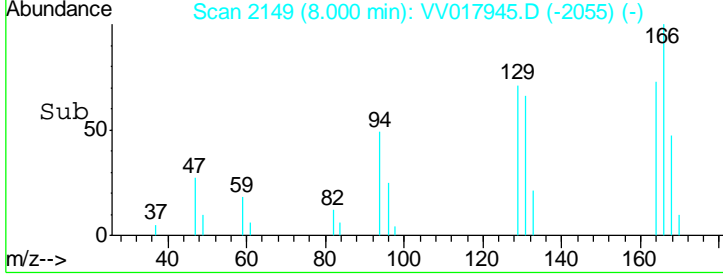
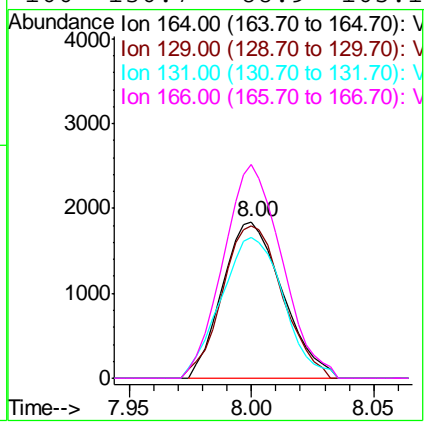
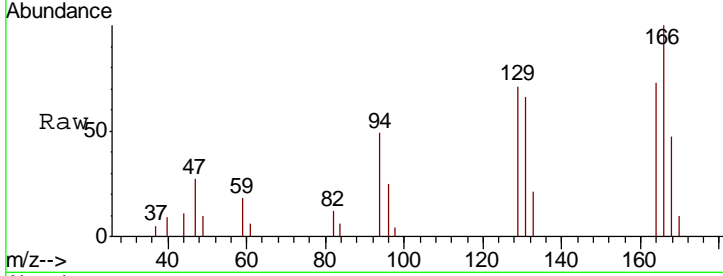


#46
 Tetrachloroethene
 Concen: 2.173 ug/L
 RT: 8.00 min Scan# 2149
 Delta R.T. 0.00 min
 Lab File: VV017945.D
 Acq: 12 Aug 2020 23:23

Instrument : MSVOA_V
 ClientSampled : F2L64

Tot Ion:164 Resp: 3168

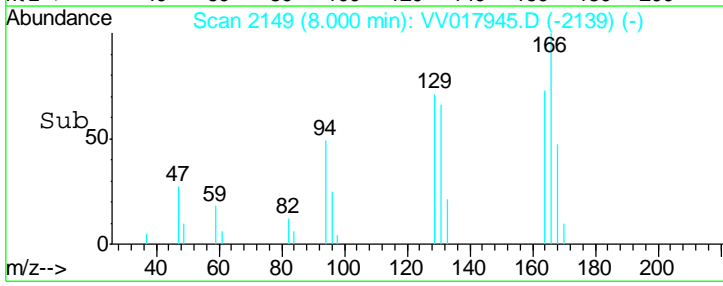
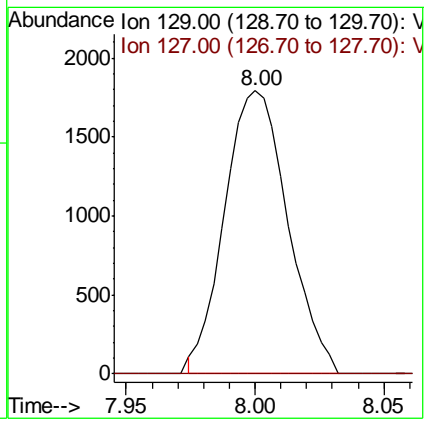
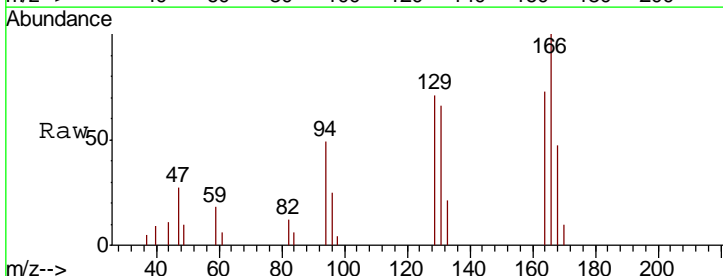
Ion	Ratio	Lower	Upper
164	100		
129	97.3	64.8	120.3
131	90.5	64.5	119.9
166	136.7	88.9	165.1

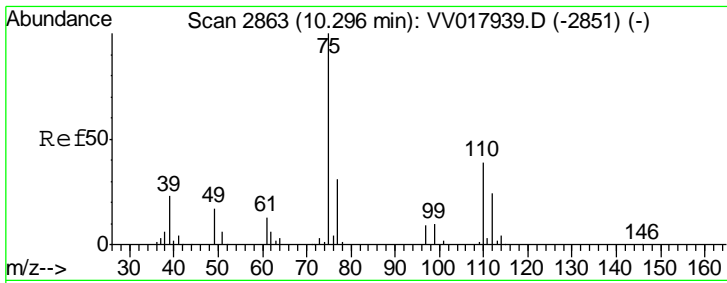


#49
 Dibromochloromethane
 Concen: 1.644 ug/L
 RT: 8.00 min Scan# 2149
 Delta R.T. -0.27 min
 Lab File: VV017945.D
 Acq: 12 Aug 2020 23:23

Tgt Ion:129 Resp: 3048

Ion	Ratio	Lower	Upper
129	100		
127	0.0	54.9	101.9#





#59
 1,2,3-Trichloropropane
 Concen: 5.378 ug/L
 RT: 11.27 min Scan# 3166
 Delta R.T. 0.97 min
 Lab File: VV017945.D
 Acq: 12 Aug 2020 23:23

Instrument :
 MSVOA_V
 ClientSampled :
 F2L64

Tot Ion: 75 Resp: 13623
 Ion Ratio Lower Upper
 75 100
 77 35.6 25.7 38.5

