

Data Path : Z:\VOASRV\HPCHEM1\MSVOA V\DATA\VV081220\
 Data File : VV017936.D
 Acq On : 12 Aug 2020 18:44
 Operator : SY/MD
 Sample : L3665-07
 Misc : 5.0mL/MSVOA V/WATER
 ALS Vial : 22 Sample Multiplier: 1

Instrument :
 MSVOA_V
 ClientSampleId :
 F4L39

Integration Parameters: LSCINT.P

Integrator: RTE
 Smoothing : OFF
 Sampling : 1
 Start Thrs: 0.2
 Stop Thrs : 0

Filtering: 5
 Min Area: 0 % of largest Peak
 Max Peaks: 100
 Peak Location: TOP

If leading or trailing edge < 100 prefer < Baseline drop else tangent >
 Peak separation: 5

Method : Z:\VOASRV\HPCHEM1\MSVOA_V\METHOD\SOMVLM081120WMA.M
 Title : VOC Analysis

Signal : TIC

peak #	R.T. min	first scan	max scan	last scan	PK TY	peak height	corr. area	corr. % max.	% of total
1	1.315	63	70	87	rVB2	454294	486237	9.18%	2.849%
2	1.576	144	151	164	rBV	118155	136598	2.58%	0.800%
3	2.119	311	320	347	rVB	236704	370703	7.00%	2.172%
4	2.547	436	453	464	rBV2	13059	29087	0.55%	0.170%
5	2.682	493	495	498	rBV	174	111	0.00%	0.001%
6	2.778	514	525	548	rBV	128317	227777	4.30%	1.334%
7	2.923	567	570	573	rVB2	221	121	0.00%	0.001%
8	2.991	589	591	594	rBV	205	75	0.00%	0.000%
9	3.068	606	615	623	rVB3	1327	2115	0.04%	0.012%
10	3.251	668	672	676	rVB2	162	145	0.00%	0.001%
11	3.383	707	713	715	rBV2	104	122	0.00%	0.001%
12	3.553	763	766	769	rBV2	279	191	0.00%	0.001%
13	3.572	770	772	774	rVB	357	105	0.00%	0.001%
14	3.598	774	780	782	rBV	117	111	0.00%	0.001%
15	3.695	800	810	816	rBV5	643	1180	0.02%	0.007%
16	3.788	825	839	854	rBV3	5844	13646	0.26%	0.080%
17	3.936	866	885	920	rBV	2159406	5297428	100.00%	31.035%
18	4.376	1006	1022	1047	rBV	156355	388107	7.33%	2.274%
19	4.630	1099	1101	1108	rVB2	197	121	0.00%	0.001%
20	4.704	1112	1124	1139	rBV5	4502	10768	0.20%	0.063%
21	4.794	1139	1152	1165	rVB5	3284	7915	0.15%	0.046%
22	4.839	1165	1166	1170	rVB2	255	86	0.00%	0.001%
23	4.868	1170	1175	1184	rBV3	228	410	0.01%	0.002%
24	4.923	1188	1192	1193	rBV2	386	225	0.00%	0.001%
25	4.949	1198	1200	1201	rBV2	810	341	0.01%	0.002%
26	5.071	1220	1238	1269	rBV2	390224	1010978	19.08%	5.923%
27	5.428	1346	1349	1351	rBV	268	123	0.00%	0.001%
28	5.444	1351	1354	1356	rBV2	156	92	0.00%	0.001%
29	5.489	1365	1368	1372	rVB2	144	102	0.00%	0.001%
30	5.511	1373	1375	1378	rBV3	259	158	0.00%	0.001%
31	5.553	1385	1388	1392	rBV	141	97	0.00%	0.001%
32	5.643	1403	1416	1440	rBV	303096	602706	11.38%	3.531%
33	5.939	1492	1508	1537	rBV	1360465	2626396	49.58%	15.387%
34	6.093	1544	1556	1570	rBV	225395	454937	8.59%	2.665%

Data Path : Z:\VOASRV\HPCHEM1\MSVOA V\DATA\VV081220\
 Data File : VV017936.D
 Acq On : 12 Aug 2020 18:44
 Operator : SY/MD
 Sample : L3665-07
 Misc : 5.0mL/MSVOA V/WATER
 ALS Vial : 22 Sample Multiplier: 1

Instrument :
 MSVOA_V
 ClientSampled :
 F4L39

Integration Parameters: LSCINT.P

Integrator: RTE
 Smoothing : OFF
 Sampling : 1
 Start Thrs: 0.2
 Stop Thrs : 0

Filtering: 5
 Min Area: 0 % of largest Peak
 Max Peaks: 100
 Peak Location: TOP

If leading or trailing edge < 100 prefer < Baseline drop else tangent >
 Peak separation: 5

Method : Z:\VOASRV\HPCHEM1\MSVOA_V\METHOD\SOMVLM081120WMA.M
 Title : VOC Analysis

35	6.309	1617	1623	1625	rBV2	268	324	0.01%	0.002%
36	6.389	1641	1648	1657	rBV5	1808	2998	0.06%	0.018%
37	6.511	1683	1686	1688	rVB	171	113	0.00%	0.001%
38	6.531	1688	1692	1694	rBV	146	111	0.00%	0.001%
39	6.617	1714	1719	1722	rBV	253	198	0.00%	0.001%
40	6.653	1727	1730	1733	rBV2	207	156	0.00%	0.001%
41	6.711	1746	1748	1754	rVB2	160	114	0.00%	0.001%
42	6.752	1756	1761	1762	rBV	230	155	0.00%	0.001%
43	6.785	1769	1771	1775	rVB2	221	142	0.00%	0.001%
44	6.807	1775	1778	1780	rBV	188	106	0.00%	0.001%
45	6.823	1780	1783	1788	rVB2	220	145	0.00%	0.001%
46	6.916	1808	1812	1816	rVB2	296	242	0.00%	0.001%
47	6.949	1816	1822	1826	rBV3	274	326	0.01%	0.002%
48	7.010	1829	1841	1870	rBV	116862	210815	3.98%	1.235%
49	7.196	1896	1899	1901	rVB2	248	123	0.00%	0.001%
50	7.338	1930	1943	1966	rBV	445984	770690	14.55%	4.515%
51	7.604	2021	2026	2028	rBV3	330	332	0.01%	0.002%
52	7.643	2028	2038	2056	rVV	84665	143233	2.70%	0.839%
53	7.997	2134	2148	2173	rBV	790376	1302564	24.59%	7.631%
54	8.109	2173	2183	2219	rVV	203468	377666	7.13%	2.213%
55	8.463	2292	2293	2295	rVB	264	99	0.00%	0.001%
56	8.502	2302	2305	2309	rBV2	218	177	0.00%	0.001%
57	8.547	2316	2319	2323	rVB2	261	173	0.00%	0.001%
58	8.566	2323	2325	2326	rBV2	169	77	0.00%	0.000%
59	8.585	2328	2331	2334	rVV3	220	176	0.00%	0.001%
60	8.698	2363	2366	2368	rBV2	193	77	0.00%	0.000%
61	8.785	2390	2393	2394	rBV	206	117	0.00%	0.001%
62	8.875	2408	2421	2451	rBV	457074	745069	14.06%	4.365%
63	9.061	2475	2479	2482	rVB2	283	183	0.00%	0.001%
64	9.087	2482	2487	2494	rBV3	315	293	0.01%	0.002%
65	9.180	2514	2516	2520	rBV3	319	190	0.00%	0.001%
66	9.341	2563	2566	2567	rBV2	208	94	0.00%	0.001%
67	9.386	2577	2580	2581	rBV2	242	116	0.00%	0.001%
68	9.428	2589	2593	2596	rVB	230	201	0.00%	0.001%
69	9.485	2607	2611	2615	rVB2	149	118	0.00%	0.001%
70	9.508	2615	2618	2620	rBV2	123	78	0.00%	0.000%
71	9.627	2652	2655	2658	rBV2	155	125	0.00%	0.001%

Data Path : Z:\VOASRV\HPCHEM1\MSVOA V\DATA\VV081220\
 Data File : VV017936.D
 Acq On : 12 Aug 2020 18:44
 Operator : SY/MD
 Sample : L3665-07
 Misc : 5.0mL/MSVOA V/WATER
 ALS Vial : 22 Sample Multiplier: 1

Instrument :
 MSVOA_V
 ClientSampleId :
 F4L39

Integration Parameters: LSCINT.P

Integrator: RTE
 Smoothing : OFF
 Sampling : 1
 Start Thrs: 0.2
 Stop Thrs : 0

Filtering: 5
 Min Area: 0 % of largest Peak
 Max Peaks: 100
 Peak Location: TOP

If leading or trailing edge < 100 prefer < Baseline drop else tangent >
 Peak separation: 5

Method : Z:\VOASRV\HPCHEM1\MSVOA_V\METHOD\SOMVLM081120WMA.M
 Title : VOC Analysis

72	9.675	2663	2670	2672	rBV2	250	251	0.00%	0.001%
73	9.727	2683	2686	2688	rBV2	199	130	0.00%	0.001%
74	9.768	2694	2699	2703	rBV2	156	160	0.00%	0.001%
75	9.887	2734	2736	2739	rVB2	262	144	0.00%	0.001%
76	9.910	2740	2743	2750	rVB2	203	170	0.00%	0.001%
77	9.955	2755	2757	2760	rBV	146	101	0.00%	0.001%
78	10.032	2777	2781	2783	rBV	265	165	0.00%	0.001%
79	10.048	2783	2786	2791	rVV2	175	182	0.00%	0.001%
80	10.074	2791	2794	2797	rVB	141	91	0.00%	0.001%
81	10.116	2803	2807	2812	rBV2	146	162	0.00%	0.001%
82	10.183	2825	2828	2832	rBV2	197	133	0.00%	0.001%
83	10.238	2833	2845	2865	rBV	288236	448391	8.46%	2.627%
84	10.363	2882	2884	2887	rBV	293	157	0.00%	0.001%
85	10.434	2903	2906	2908	rBV2	143	91	0.00%	0.001%
86	10.450	2908	2911	2913	rVV2	196	100	0.00%	0.001%
87	10.482	2919	2921	2924	rBV2	187	115	0.00%	0.001%
88	10.553	2940	2943	2946	rBV2	218	203	0.00%	0.001%
89	10.604	2957	2959	2962	rVB	211	91	0.00%	0.001%
90	10.646	2970	2972	2973	rBV	177	81	0.00%	0.000%
91	10.723	2994	2996	3001	rVB2	198	129	0.00%	0.001%
92	10.794	3015	3018	3021	rBV2	118	86	0.00%	0.001%
93	10.871	3038	3042	3045	rBV	232	210	0.00%	0.001%
94	11.119	3114	3119	3122	rBV3	256	219	0.00%	0.001%
95	11.209	3145	3147	3150	rVB2	283	142	0.00%	0.001%
96	11.270	3155	3166	3187	rBV	437762	674897	12.74%	3.954%
97	11.579	3260	3262	3264	rBV	203	117	0.00%	0.001%
98	11.646	3271	3283	3306	rBV	458874	714549	13.49%	4.186%
99	11.990	3383	3390	3394	rBV2	288	391	0.01%	0.002%
100	12.498	3545	3548	3549	rBV	209	95	0.00%	0.001%

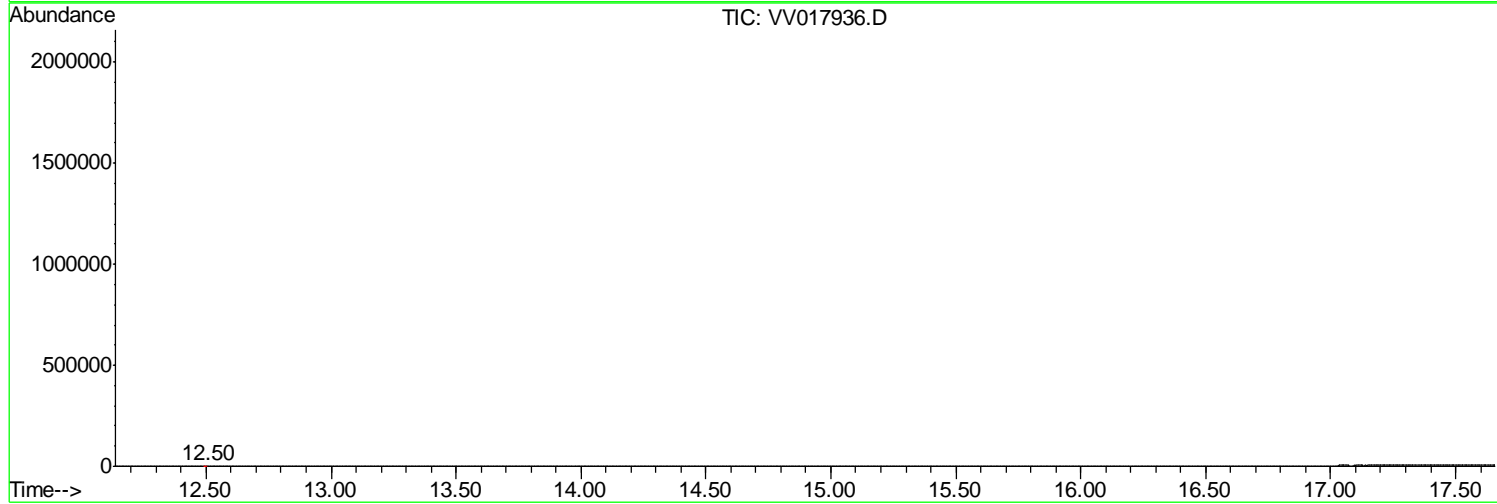
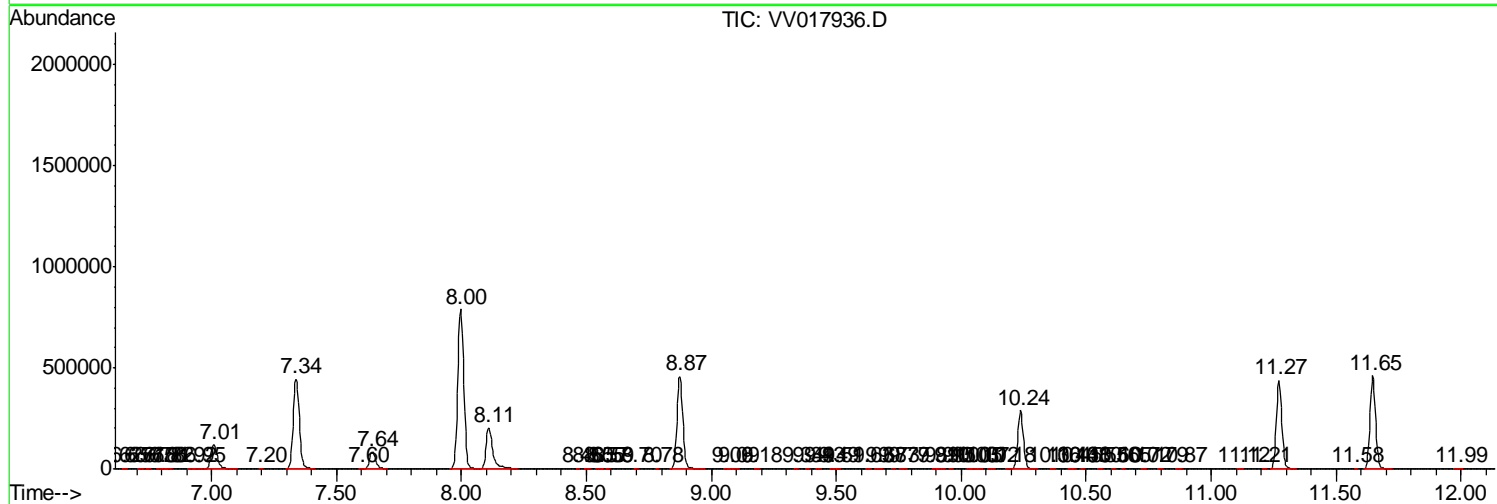
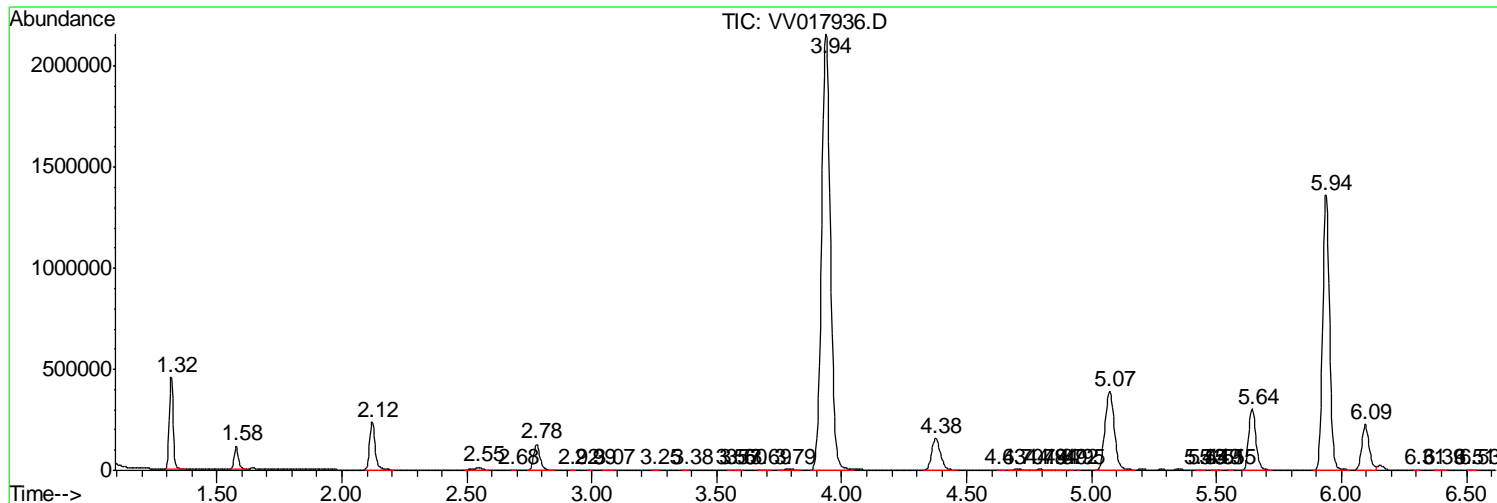
Sum of corrected areas: 17068983

Data Path : Z:\VOASRV\HPCHEM1\MSVOA V\DATA\VV081220\
 Data File : VV017936.D
 Acq On : 12 Aug 2020 18:44
 Operator : SY/MD
 Sample : L3665-07
 Misc : 5.0mL/MSVOA V/WATER
 ALS Vial : 22 Sample Multiplier: 1

Instrument :
 MSVOA_V
ClientSampleId :
 F4L39

Quant Method : Z:\VOASRV\HPCHEM1\MSVOA_V\METHOD\SOMVLM081120WMA.M
 Quant Title : VOC Analysis

TIC Library : C:\DATABASE\NIST11.L
 TIC Integration Parameters: LSCINT.P



Data Path : Z:\VOASRV\HPCHEM1\MSVOA_V\DATA\VV081220\
Data File : VV017936.D
Acq On : 12 Aug 2020 18:44
Operator : SY/MD
Sample : L3665-07
Misc : 5.0mL/MSVOA_V/WATER
ALS Vial : 22 Sample Multiplier: 1

Instrument :
MSVOA_V
ClientSampleId :
F4L39

Quant Method : Z:\VOASRV\HPCHEM1\MSVOA_V\METHOD\SOMVLM081120WMA.M
Quant Title : VOC Analysis

TIC Library : C:\DATABASE\NIST11.L
TIC Integration Parameters: LSCINT.P

No Library Search Compounds Detected

Data Path : Z:\VOASRV\HPCHEM1\MSVOA_V\DATA\VV081220\
Data File : VV017936.D
Acq On : 12 Aug 2020 18:44
Operator : SY/MD
Sample : L3665-07
Misc : 5.0mL/MSVOA_V/WATER
ALS Vial : 22 Sample Multiplier: 1

Instrument :
MSVOA_V
ClientSampleId :
F4L39

Quant Method : Z:\VOASRV\HPCHEM1\MSVOA_V\METHOD\SOMVLM081120WMA.M
Quant Title : VOC Analysis

TIC Library : C:\DATABASE\NIST11.L
TIC Integration Parameters: LSCINT.P

TIC Top Hit name	RT	EstConc	Units	Response	--Internal Standard--			
					#	RT	Resp	Conc
