

Data Path : Z:\voasrv\HPCHEM1\MSVOA\_V\Data\VW081222\  
 Data File : VW027317.D  
 Acq On : 12 Aug 2022 08:55  
 Operator : SY/MD  
 Sample : N4162-18  
 Misc : 25.0mL/MSVOA\_V/WATER  
 ALS Vial : 1 Sample Multiplier: 1

Instrument :  
 MSVOA\_V  
 ClientSampleId :

Quant Time: Aug 13 01:35:07 2022  
 Quant Method : Z:\voasrv\HPCHEM1\MSVOA\_V\Method\SFAMVTR081122WMA.M  
 Quant Title : TRACE VOA SFAM1.0  
 QLast Update : Fri Aug 12 08:00:46 2022  
 Response via : Initial Calibration

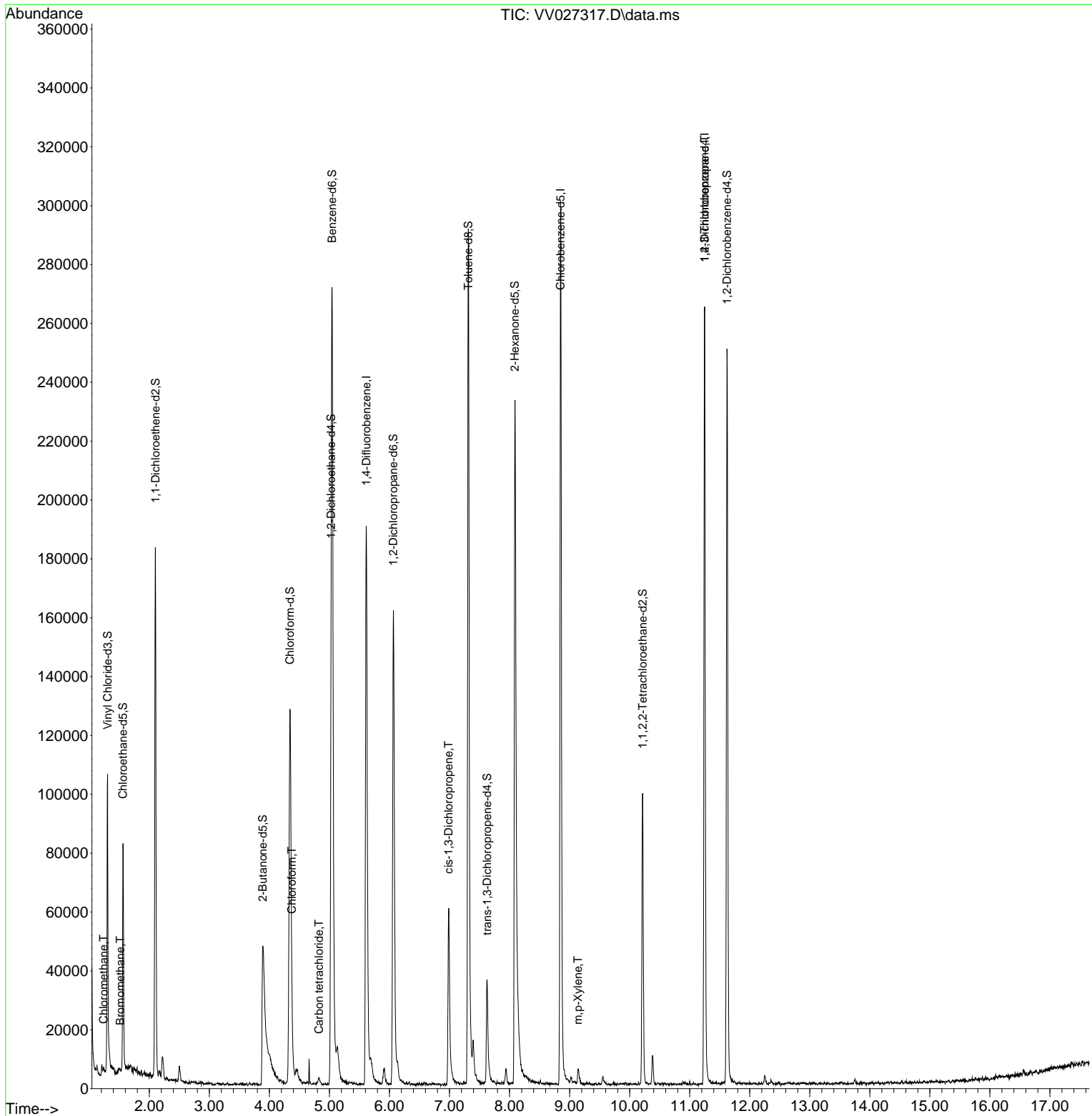
Compound	R.T.	QIon	Response	Conc	Units	Dev(Min)
Internal Standards						
1) 1,4-Difluorobenzene	5.616	114	157182	5.000	ug/L	0.00
28) Chlorobenzene-d5	8.850	117	164294	5.000	ug/L	0.00
58) 1,4-Dichlorobenzene-d4	11.249	152	66523	5.000	ug/L	0.00
System Monitoring Compounds						
4) Vinyl Chloride-d3	1.304	65	72955	5.342	ug/L	0.00
Spiked Amount	5.000	Range 40 - 130	Recovery	=	106.800%	
7) Chloroethane-d5	1.561	69	48567	4.897	ug/L	0.00
Spiked Amount	5.000	Range 65 - 130	Recovery	=	98.000%	
11) 1,1-Dichloroethene-d2	2.101	63	96425	3.893	ug/L	0.00
Spiked Amount	5.000	Range 60 - 125	Recovery	=	77.800%	
20) 2-Butanone-d5	3.889	46	104701	45.272	ug/L	0.00
Spiked Amount	50.000	Range 40 - 130	Recovery	=	90.540%	
24) Chloroform-d	4.342	84	129101	5.155	ug/L	0.00
Spiked Amount	5.000	Range 70 - 125	Recovery	=	103.000%	
26) 1,2-Dichloroethane-d4	5.027	65	62504	5.239	ug/L	0.00
Spiked Amount	5.000	Range 70 - 130	Recovery	=	104.800%	
32) Benzene-d6	5.043	84	241831	4.990	ug/L	0.00
Spiked Amount	5.000	Range 70 - 125	Recovery	=	99.800%	
36) 1,2-Dichloropropane-d6	6.066	67	80956	5.402	ug/L	0.00
Spiked Amount	5.000	Range 60 - 140	Recovery	=	108.000%	
41) Toluene-d8	7.313	98	199224	4.490	ug/L	0.00
Spiked Amount	5.000	Range 70 - 130	Recovery	=	89.800%	
43) trans-1,3-Dichloroprop...	7.625	79	22567	4.348	ug/L	0.00
Spiked Amount	5.000	Range 55 - 130	Recovery	=	87.000%	
46) 2-Hexanone-d5	8.088	63	81756	40.700	ug/L	0.00
Spiked Amount	50.000	Range 45 - 130	Recovery	=	81.400%	
56) 1,1,2,2-Tetrachloroeth...	10.217	84	48019	4.429	ug/L	0.00
Spiked Amount	5.000	Range 65 - 120	Recovery	=	88.600%	
66) 1,2-Dichlorobenzene-d4	11.622	152	63817	5.558	ug/L	0.00
Spiked Amount	5.000	Range 80 - 120	Recovery	=	111.200%	
Target Compounds						
3) Chloromethane	1.236	50	1000	0.054	ug/L #	66
6) Bromomethane	1.516	94	334	0.041	ug/L	100
25) Chloroform	4.371	83	9078	0.331	ug/L	81
31) Carbon tetrachloride	4.825	117	1297	0.064	ug/L #	30
39) cis-1,3-Dichloropropene	6.982	75	1674	0.099	ug/L #	68
53) m,p-Xylene	9.140	106	1607	0.075	ug/L	79
61) 1,2,3-Trichloropropane	11.249	75	8182	1.277	ug/L #	66

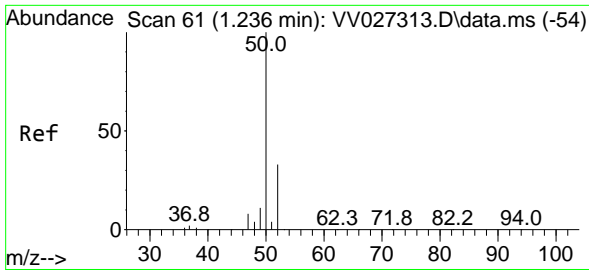
(#) = qualifier out of range (m) = manual integration (+) = signals summed

Data Path : Z:\voasrv\HPCHEM1\MSVOA\_V\Data\VV081222\  
 Data File : VV027317.D  
 Acq On : 12 Aug 2022 08:55  
 Operator : SY/MD  
 Sample : N4162-18  
 Misc : 25.0mL/MSVOA\_V/WATER  
 ALS Vial : 1 Sample Multiplier: 1

Instrument :  
 MSVOA\_V  
 ClientSampleId :

Quant Time: Aug 13 01:35:07 2022  
 Quant Method : Z:\voasrv\HPCHEM1\MSVOA\_V\Method\SFAMVTR081122WMA.M  
 Quant Title : TRACE VOA SFAM1.0  
 QLast Update : Fri Aug 12 08:00:46 2022  
 Response via : Initial Calibration

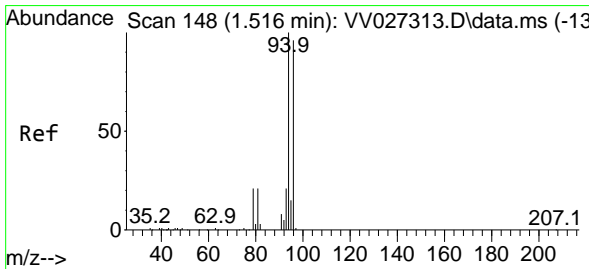
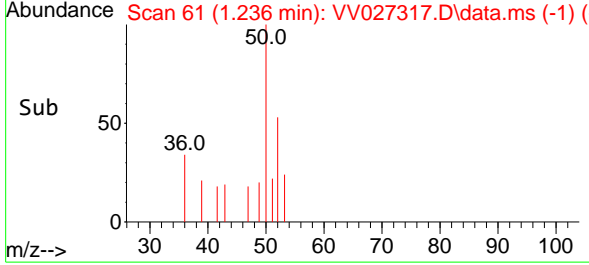
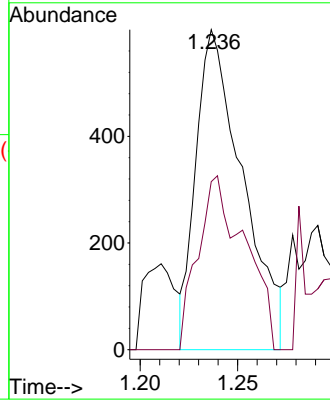
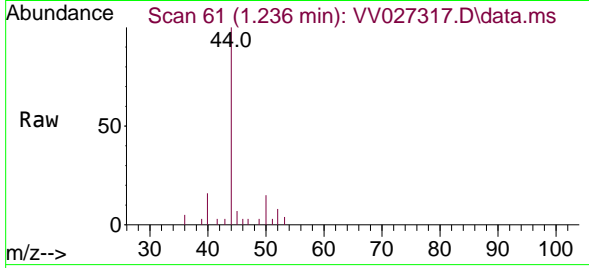




#3  
 Chloromethane  
 Concen: 0.054 ug/L  
 RT: 1.236 min Scan# 61  
 Delta R.T. 0.000 min  
 Lab File: VV027317.D  
 Acq: 12 Aug 2022 08:55

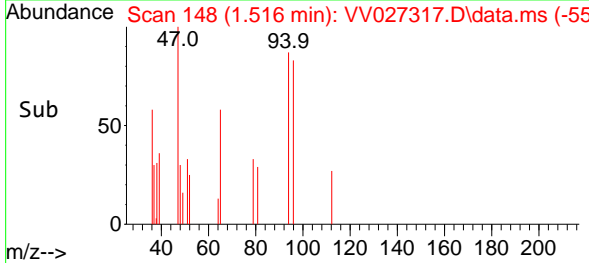
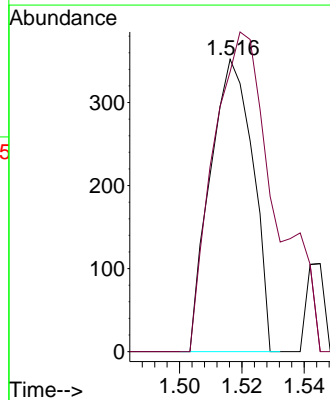
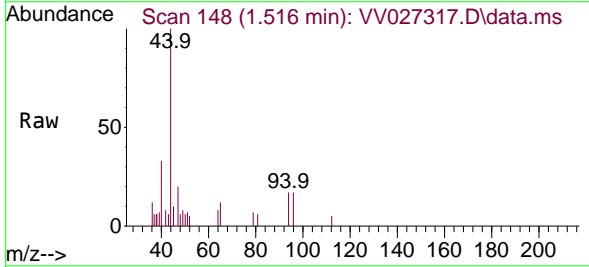
Instrument :  
 MSVOA\_V  
 ClientSampleId :

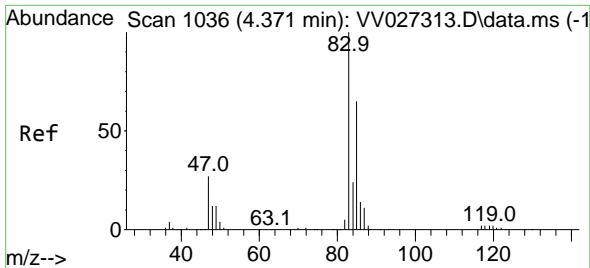
Tgt Ion: 50 Resp: 1000  
 Ion Ratio Lower Upper  
 50 100  
 52 52.5 23.4 43.4#



#6  
 Bromomethane  
 Concen: 0.041 ug/L  
 RT: 1.516 min Scan# 148  
 Delta R.T. 0.000 min  
 Lab File: VV027317.D  
 Acq: 12 Aug 2022 08:55

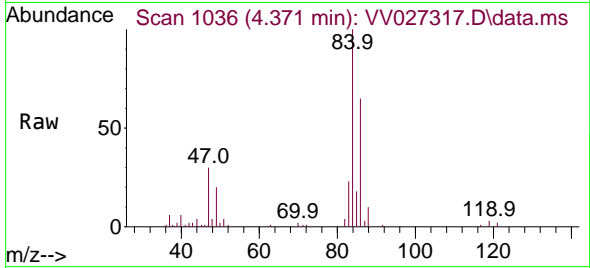
Tgt Ion: 94 Resp: 334  
 Ion Ratio Lower Upper  
 94 100  
 96 95.7 67.2 124.8



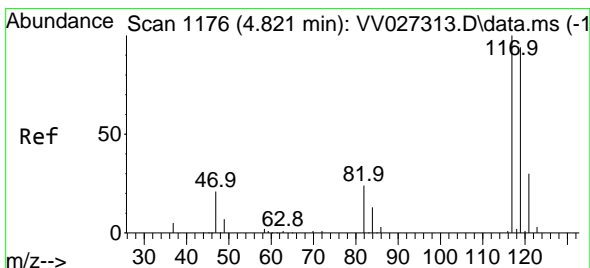
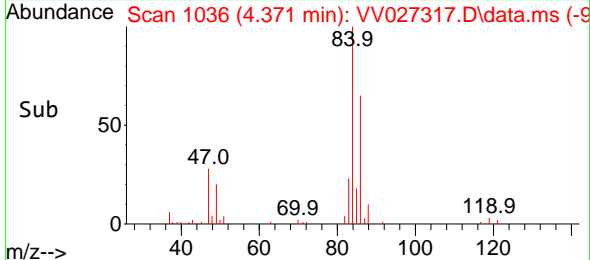
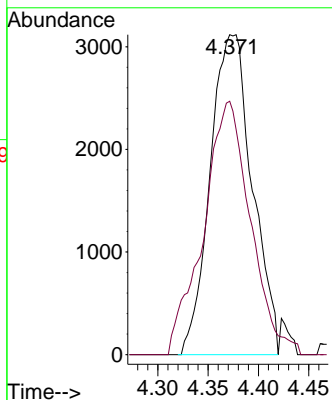


#25  
 Chloroform  
 Concen: 0.331 ug/L  
 RT: 4.371 min Scan# 1036  
 Delta R.T. 0.000 min  
 Lab File: VV027317.D  
 Acq: 12 Aug 2022 08:55

Instrument : MSVOA\_V  
 ClientSampleId :

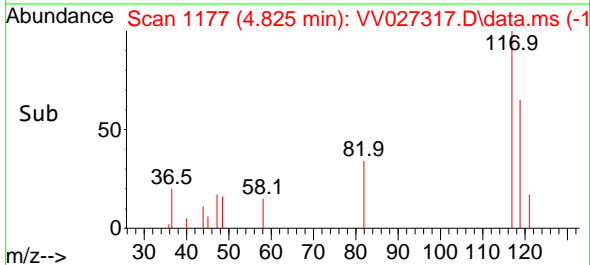
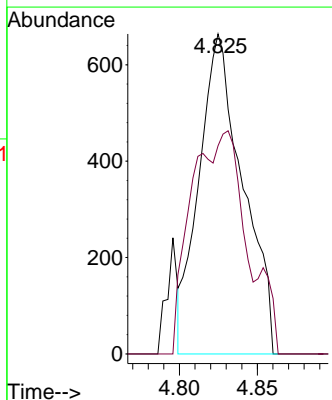
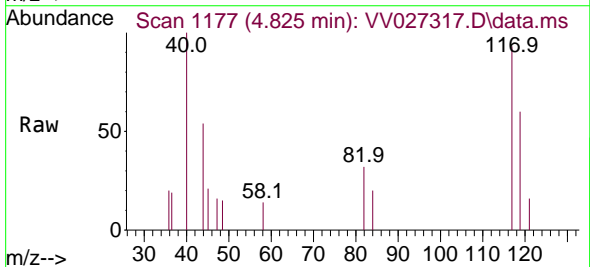


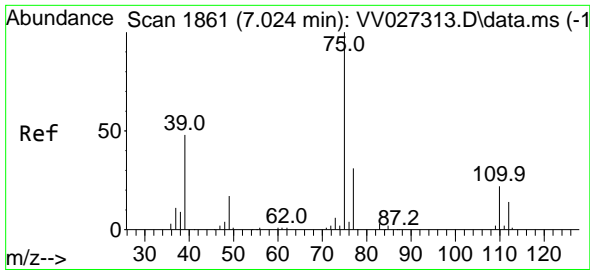
Tgt Ion: 83 Resp: 9078  
 Ion Ratio Lower Upper  
 83 100  
 85 79.2 45.2 84.0



#31  
 Carbon tetrachloride  
 Concen: 0.064 ug/L  
 RT: 4.825 min Scan# 1177  
 Delta R.T. 0.003 min  
 Lab File: VV027317.D  
 Acq: 12 Aug 2022 08:55

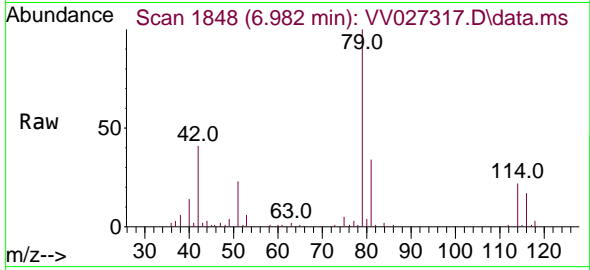
Tgt Ion: 117 Resp: 1297  
 Ion Ratio Lower Upper  
 117 100  
 119 27.4 76.6 115.0#



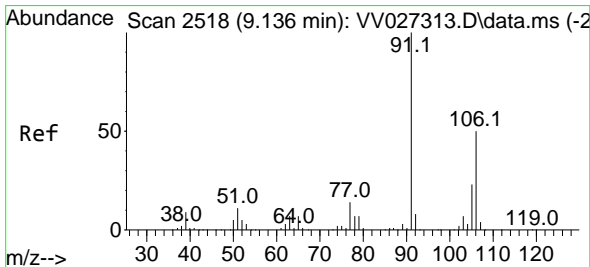
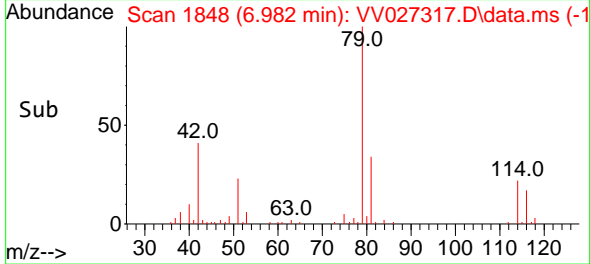
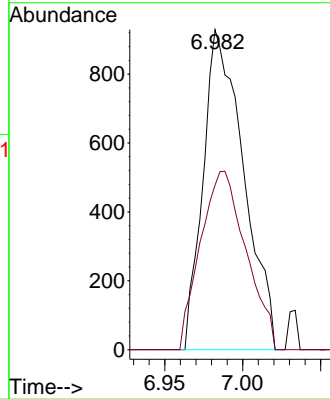


#39  
 cis-1,3-Dichloropropene  
 Concen: 0.099 ug/L  
 RT: 6.982 min Scan# 1861  
 Delta R.T. -0.042 min  
 Lab File: VV027317.D  
 Acq: 12 Aug 2022 08:55

Instrument : MSVOA\_V  
 ClientSampleId :

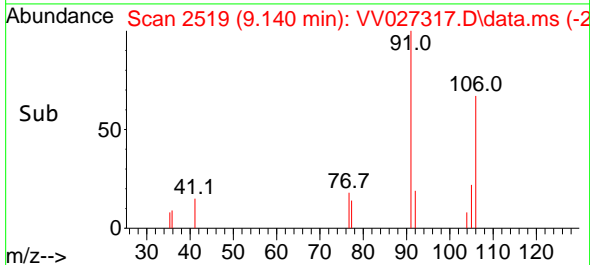
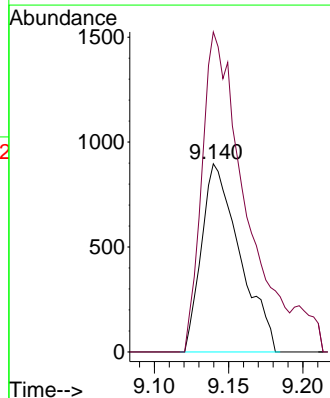
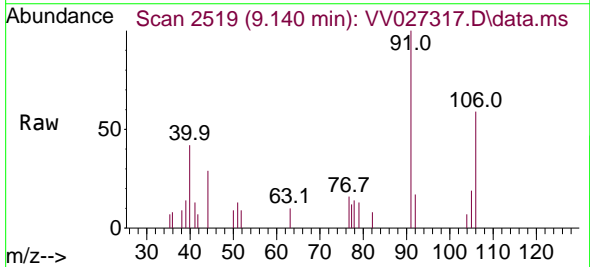


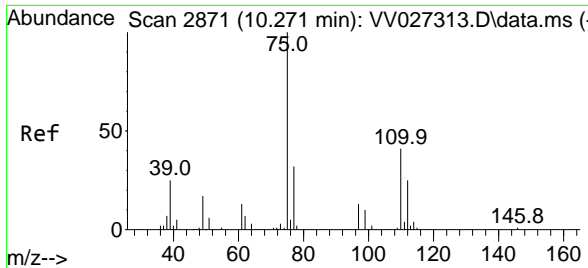
Tgt Ion: 75 Resp: 1674  
 Ion Ratio Lower Upper  
 75 100  
 77 51.5 23.2 43.0#



#53  
 m,p-Xylene  
 Concen: 0.075 ug/L  
 RT: 9.140 min Scan# 2519  
 Delta R.T. 0.003 min  
 Lab File: VV027317.D  
 Acq: 12 Aug 2022 08:55

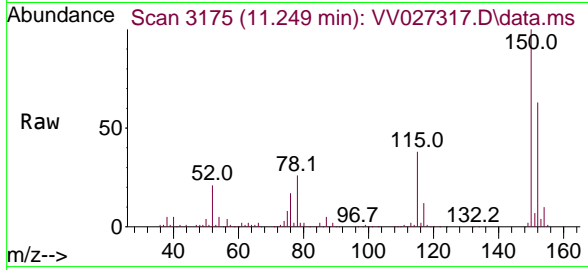
Tgt Ion:106 Resp: 1607  
 Ion Ratio Lower Upper  
 106 100  
 91 170.0 141.5 262.9





#61  
 1,2,3-Trichloropropane  
 Concen: 1.277 ug/L  
 RT: 11.249 min Scan# 31  
 Delta R.T. 0.978 min  
 Lab File: VV027317.D  
 Acq: 12 Aug 2022 08:55

Instrument :  
 MSVOA\_V  
 ClientSampleId :



Tgt Ion: 75 Resp: 8182

Ion	Ratio	Lower	Upper
75	100		
77	34.8	26.6	39.8
110	1.8	31.0	46.6#

