

Data Path : Z:\VOASRV\HPCHEM1\MSVOA V\DATA\VV081318\
 Data File : VV007004.D
 Acq On : 13 Aug 2018 14:15
 Operator : SY/MD
 Sample : J4451-23DL 4X
 Misc : 25 mL/MSVOA V/WATER
 ALS Vial : 7 Sample Multiplier: 1

Instrument :
 MSVOA_V
 ClientSampled :
 A4ZL3DL

Integration Parameters: rteint.p

Integrator: RTE
 Smoothing : ON
 Sampling : 1
 Start Thrs: 0.1
 Stop Thrs : 0

Filtering: 5
 Min Area: 3 % of largest Peak
 Max Peaks: 100
 Peak Location: TOP

If leading or trailing edge < 100 prefer < Baseline drop else tangent >
 Peak separation: 5

Method : Z:\VOASRV\HPCHEM1\MSVOA_V\METHOD\SOMVTR080918WMA.M
 Title : TRACE VOA SOM01.0

Signal : TIC

peak #	R.T. min	first scan	max scan	last scan	PK TY	peak height	corr. area	corr. % max.	% of total
1	1.032	27	44	97	rBV	8730253	11800903	100.00%	48.413%
2	1.559	197	208	213	rBV	209793	266236	2.26%	1.092%
3	2.135	376	387	397	rBV2	163114	248004	2.10%	1.017%
4	2.205	398	409	429	rBV	1603609	2779220	23.55%	11.402%
5	2.318	439	444	459	rVB	98031	153743	1.30%	0.631%
6	2.816	584	599	618	rVB	97114	207353	1.76%	0.851%
7	3.974	937	959	976	rBV2	141831	439502	3.72%	1.803%
8	4.408	1077	1094	1115	rBV	135365	328495	2.78%	1.348%
9	4.726	1173	1193	1212	rBV	150137	377245	3.20%	1.548%
10	5.099	1289	1309	1320	rBV2	316241	743906	6.30%	3.052%
11	5.151	1321	1325	1356	rVB2	98103	243541	2.06%	0.999%
12	5.668	1469	1486	1508	rBV	267476	535861	4.54%	2.198%
13	6.125	1613	1628	1635	rBV	189197	366000	3.10%	1.502%
14	6.179	1635	1645	1662	rVB2	367133	756239	6.41%	3.102%
15	7.035	1899	1911	1931	rBV2	79677	144825	1.23%	0.594%
16	7.292	1977	1991	2002	rBV	89768	178443	1.51%	0.732%
17	7.363	2002	2013	2025	rVV	294017	515776	4.37%	2.116%
18	7.437	2025	2036	2054	rVB	378723	655544	5.56%	2.689%
19	7.671	2095	2109	2127	rBV3	57684	121931	1.03%	0.500%
20	8.022	2207	2218	2232	rVB2	74784	125950	1.07%	0.517%
21	8.150	2244	2258	2269	rBV3	322316	718197	6.09%	2.946%
22	8.900	2479	2491	2517	rBV	380661	643720	5.45%	2.641%
23	9.060	2529	2541	2556	rBV	237669	375420	3.18%	1.540%
24	9.189	2569	2581	2598	rBV	180991	289612	2.45%	1.188%
25	10.266	2905	2916	2931	rBV	137401	222286	1.88%	0.912%
26	11.234	3206	3217	3227	rBV	99100	164714	1.40%	0.676%
27	11.301	3227	3238	3263	rVB	298206	534103	4.53%	2.191%
28	11.678	3343	3355	3377	rBV	252137	438527	3.72%	1.799%

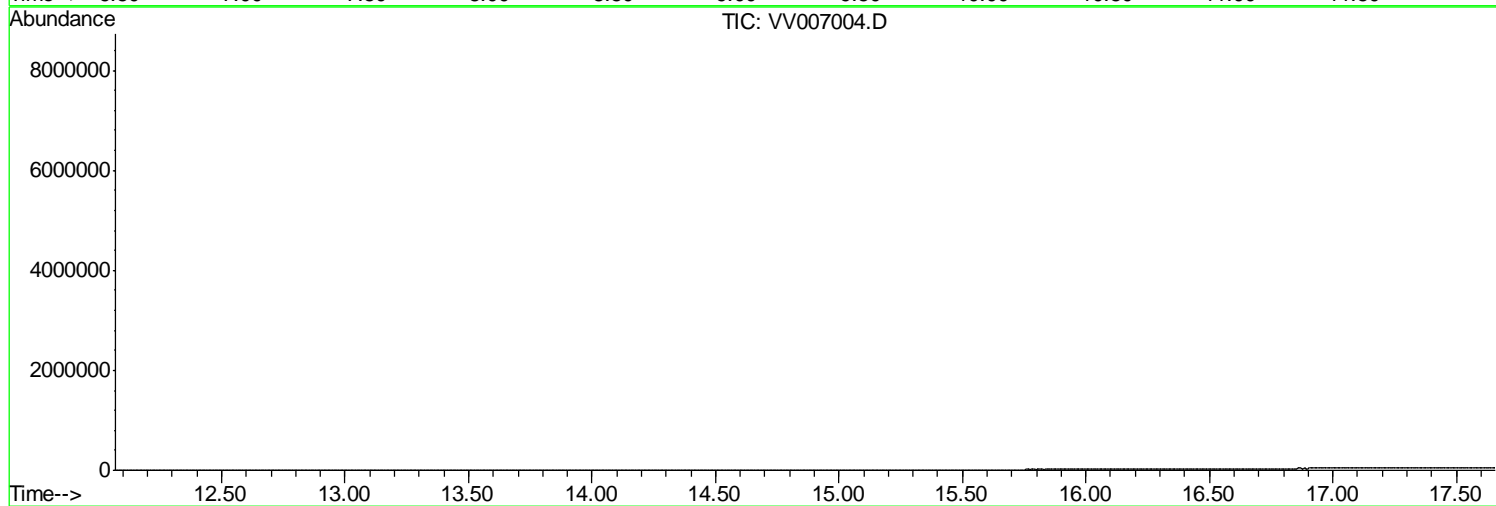
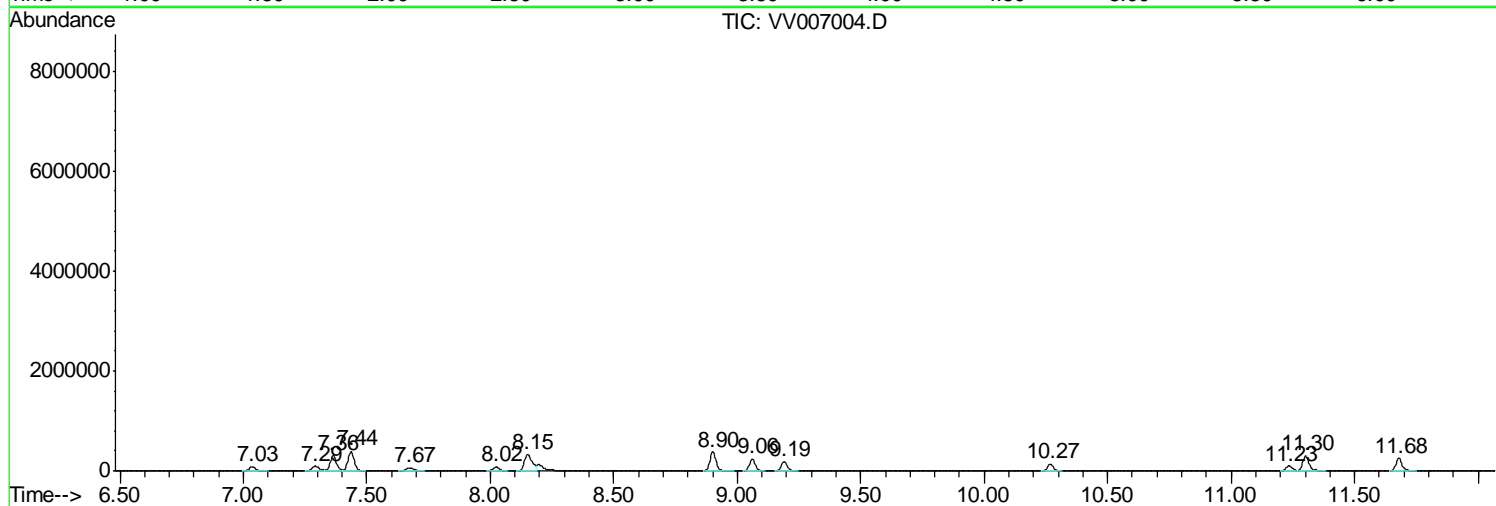
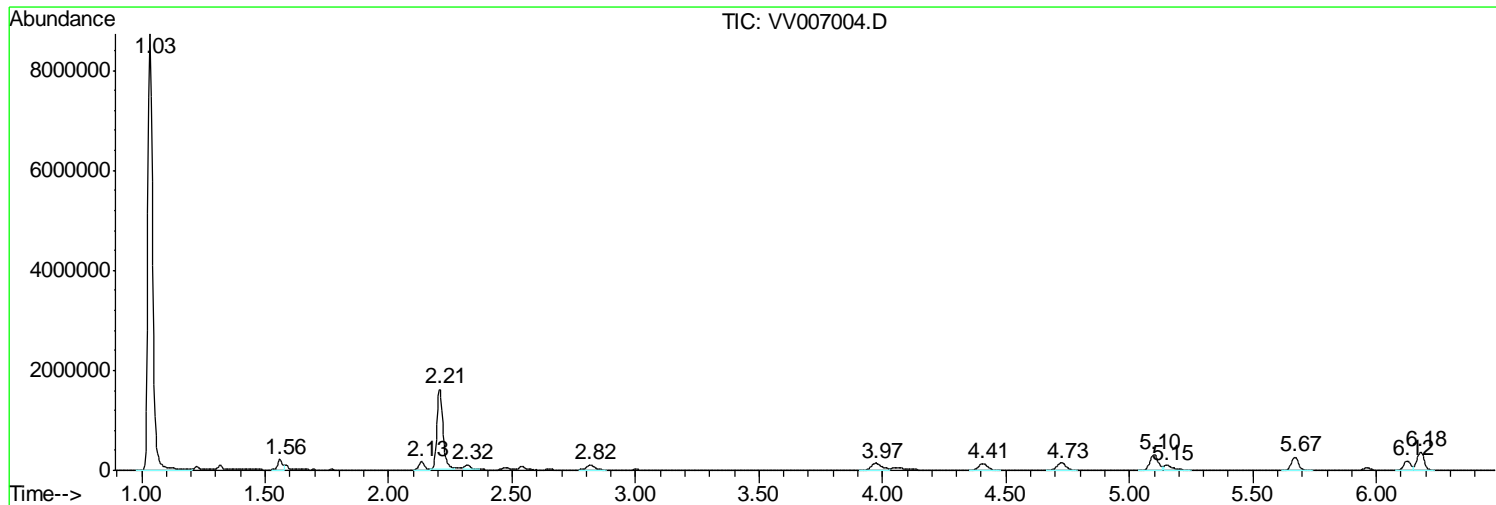
Sum of corrected areas: 24375296

Data Path : Z:\VOASRV\HPCHEM1\MSVOA V\DATA\VV081318\
Data File : VV007004.D
Acq On : 13 Aug 2018 14:15
Operator : SY/MD
Sample : J4451-23DL 4X
Misc : 25 mL/MSVOA V/WATER
ALS Vial : 7 Sample Multiplier: 1

Instrument :
MSVOA_V
Client Sampled :
A4ZL3DL

Quant Method : Z:\VOASRV\HPCHEM1\MSVOA_V\METHOD\SOMVTR080918WMA.M
Quant Title : TRACE VOA SOM01.0

TIC Library : C:\DATABASE\NIST11.L
TIC Integration Parameters: LSCINT.P



Data Path : Z:\VOASRV\HPCHEM1\MSVOA_V\DATA\VV081318\
Data File : VV007004.D
Acq On : 13 Aug 2018 14:15
Operator : SY/MD
Sample : J4451-23DL 4X
Misc : 25 mL/MSVOA_V/WATER
ALS Vial : 7 Sample Multiplier: 1

Instrument :
MSVOA_V
ClientSampleId :
A4ZL3DL

Quant Method : Z:\VOASRV\HPCHEM1\MSVOA_V\METHOD\SOMVTR080918WMA.M
Quant Title : TRACE VOA SOM01.0

TIC Library : C:\DATABASE\NIST11.L
TIC Integration Parameters: LSCINT.P

No Library Search Compounds Detected

Data Path : Z:\VOASRV\HPCHEM1\MSVOA_V\DATA\VV081318\
Data File : VV007004.D
Acq On : 13 Aug 2018 14:15
Operator : SY/MD
Sample : J4451-23DL 4X
Misc : 25 mL/MSVOA_V/WATER
ALS Vial : 7 Sample Multiplier: 1

Instrument :
MSVOA_V
ClientSampleId :
A4ZL3DL

Quant Method : Z:\VOASRV\HPCHEM1\MSVOA_V\METHOD\SOMVTR080918WMA.M
Quant Title : TRACE VOA SOM01.0

TIC Library : C:\DATABASE\NIST11.L
TIC Integration Parameters: LSCINT.P

TIC Top Hit name	RT	EstConc	Units	Response	--Internal Standard--			
					#	RT	Resp	Conc
