

Data Path : Z:\VOASRV\HPCHEM1\MSVOA_V\DATA\VV081619\
 Data File : VV012263.D
 Acq On : 16 Aug 2019 11:38
 Operator : SY/MD
 Sample : VV0816WBL01
 Misc : 25mL/MSVOA_V/WATER
 ALS Vial : 4 Sample Multiplier: 1

Instrument :
 MSVOA_V
 ClientSampleID :
 VBLK37

Quant Time: Aug 16 23:38:10 2019
 Quant Method : Z:\VOASRV\HPCHEM1\MSVOA_V\METHOD\SOMVTR081319WMA.M
 Quant Title : TRACE VOA SOM01.0
 QLast Update : Fri Aug 16 23:35:37 2019
 Response via : Initial Calibration

Internal Standards	R.T.	QIon	Response	Conc	Units	Dev(Min)
1) 1,4-Difluorobenzene	5.66	114	162303	5.00	ug/L	0.00
28) Chlorobenzene-d5	8.89	117	159275	5.00	ug/L	0.00
60) 1,4-Dichlorobenzene-d4	11.29	152	73416	5.00	ug/L	0.00

System Monitoring Compounds

4) Vinyl Chloride-d3	1.32	65	61801	6.18	ug/L	0.00
Spiked Amount	5.000	Range	40 - 130	Recovery	=	123.60%
7) Chloroethane-d5	1.58	69	44325	5.80	ug/L	0.00
Spiked Amount	5.000	Range	65 - 130	Recovery	=	116.00%
11) 1,1-Dichloroethene-d2	2.13	63	54405	3.32	ug/L	0.00
Spiked Amount	5.000	Range	60 - 125	Recovery	=	66.40%
20) 2-Butanone-d5	3.97	46	75588	35.00	ug/L	0.00
Spiked Amount	50.000	Range	40 - 130	Recovery	=	70.00%
24) Chloroform-d	4.40	84	79728	4.03	ug/L	0.00
Spiked Amount	5.000	Range	70 - 125	Recovery	=	80.60%
26) 1,2-Dichloroethane-d4	5.08	65	41901	4.47	ug/L	0.00
Spiked Amount	5.000	Range	70 - 130	Recovery	=	89.40%
32) Benzene-d6	5.09	84	156018	3.87	ug/L	0.00
Spiked Amount	5.000	Range	70 - 125	Recovery	=	77.40%
36) 1,2-Dichloropropane-d6	6.12	67	45160	3.80	ug/L	0.00
Spiked Amount	5.000	Range	60 - 140	Recovery	=	76.00%
41) Toluene-d8	7.36	98	141778	3.85	ug/L	0.00
Spiked Amount	5.000	Range	70 - 130	Recovery	=	77.00%
43) trans-1,3-Dichloropropene-	7.66	79	17650	3.88	ug/L	0.00
Spiked Amount	5.000	Range	55 - 130	Recovery	=	77.60%
46) 2-Hexanone-d5	8.14	63	48819	33.48	ug/L	0.00
Spiked Amount	50.000	Range	45 - 130	Recovery	=	66.96%
57) 1,1,2,2-Tetrachloroethane-	10.26	84	30019	3.63	ug/L	0.00
Spiked Amount	5.000	Range	65 - 120	Recovery	=	72.60%
64) 1,2-Dichlorobenzene-d4	11.67	152	59184	4.76	ug/L	0.00
Spiked Amount	5.000	Range	80 - 120	Recovery	=	95.20%

Target Compounds

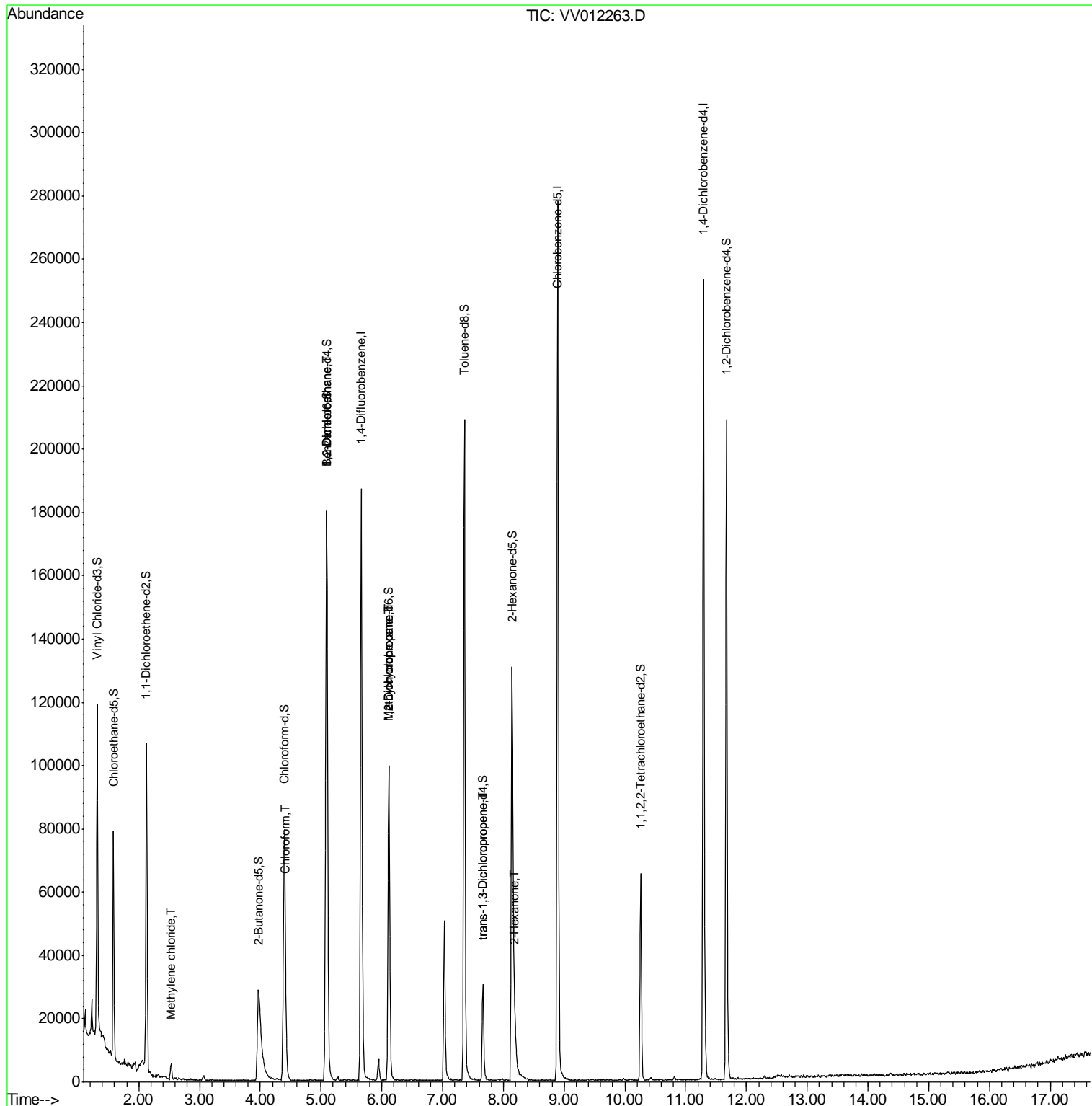
Target Compounds	R.T.	QIon	Response	Conc	Units	Qvalue
16) Methylene chloride	2.53	84	1879	0.204	ug/L	94
25) Chloroform	4.42	83	4254	0.180	ug/L	93
27) 1,2-Dichloroethane	5.09	62	736	0.057	ug/L #	74
35) Methylcyclohexane	6.12	83	12079	0.597	ug/L #	17
37) 1,2-Dichloropropane	6.12	63	5241	0.437	ug/L #	85
44) trans-1,3-Dichloropropene	7.67	75	746	0.057	ug/L #	76
48) 2-Hexanone	8.19	43	7410	1.595	ug/L #	87

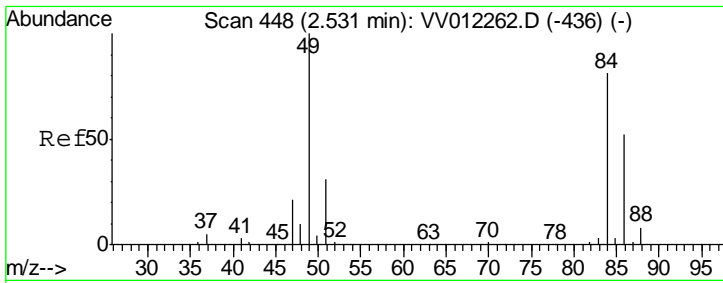
(#) = qualifier out of range (m) = manual integration (+) = signals summed

Data Path : Z:\VOASRV\HPCHEM1\MSVOA_V\DATA\VV081619\
 Data File : VV012263.D
 Acq On : 16 Aug 2019 11:38
 Operator : SY/MD
 Sample : VV0816WBL01
 Misc : 25mL/MSVOA_V/WATER
 ALS Vial : 4 Sample Multiplier: 1

Instrument :
 MSVOA_V
 ClientSampled :
 VBLK37

Quant Time: Aug 16 23:38:10 2019
 Quant Method : Z:\VOASRV\HPCHEM1\MSVOA_V\METHOD\SOMVTR081319WMA.M
 Quant Title : TRACE VOA SOM01.0
 QLast Update : Fri Aug 16 23:35:37 2019
 Response via : Initial Calibration

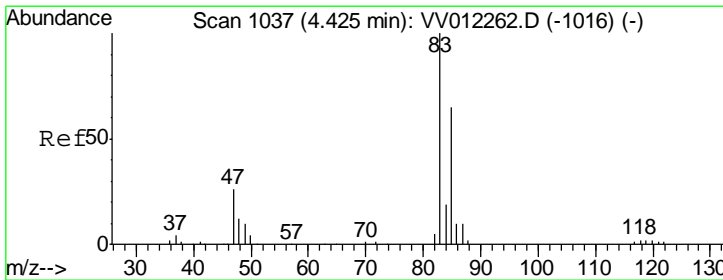
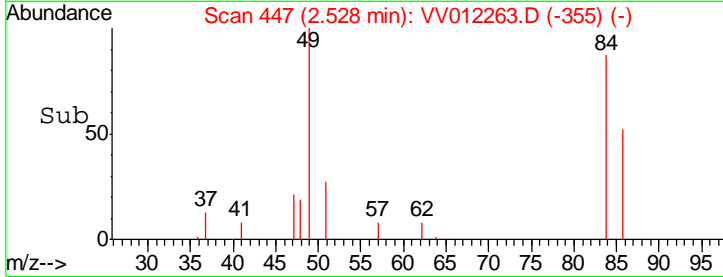
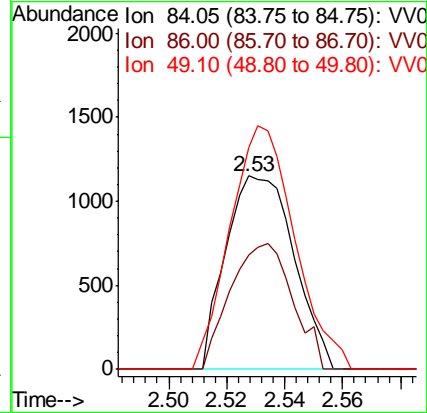
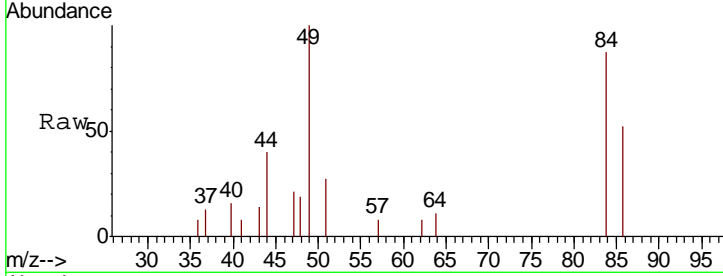




#16
 Methylene chloride
 Concen: 0.204 ug/L
 RT: 2.53 min Scan# 447
 Delta R.T. -0.00 min
 Lab File: VV012263.D
 Acq: 16 Aug 2019 11:38

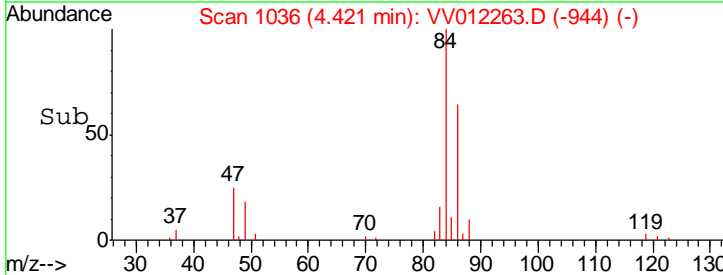
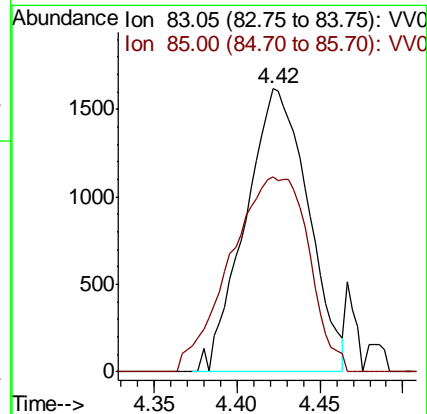
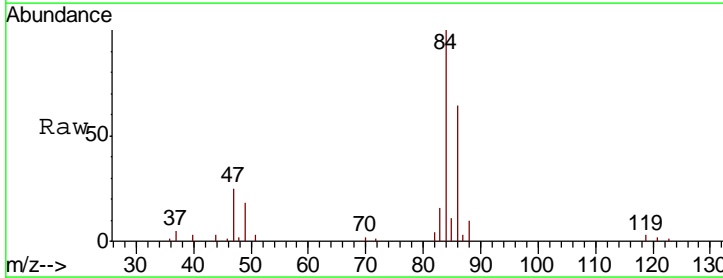
Instrument :
 MSVOA_V
 ClientSampled :
 VBLK37

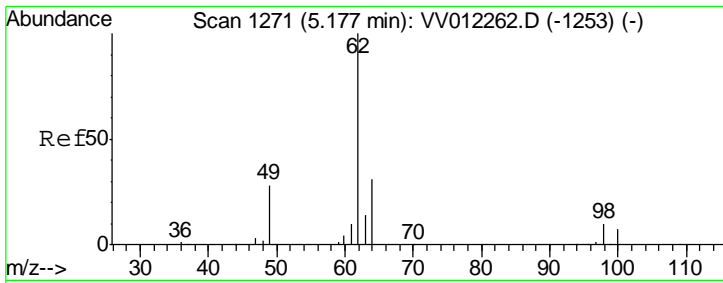
Tgt Ion	Resp	Lower	Upper
84	100		
86	59.3	44.4	82.5
49	115.0	85.1	158.1



#25
 Chloroform
 Concen: 0.180 ug/L
 RT: 4.42 min Scan# 1036
 Delta R.T. -0.00 min
 Lab File: VV012263.D
 Acq: 16 Aug 2019 11:38

Tgt Ion	Resp	Lower	Upper
83	100		
85	69.0	44.3	82.3

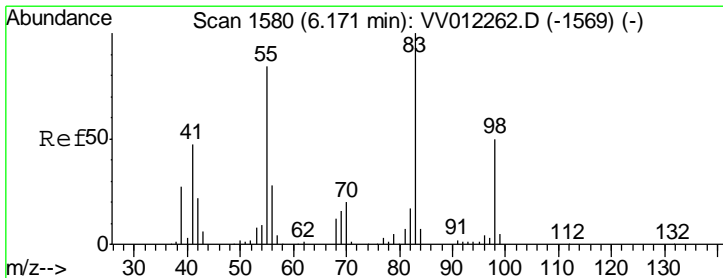
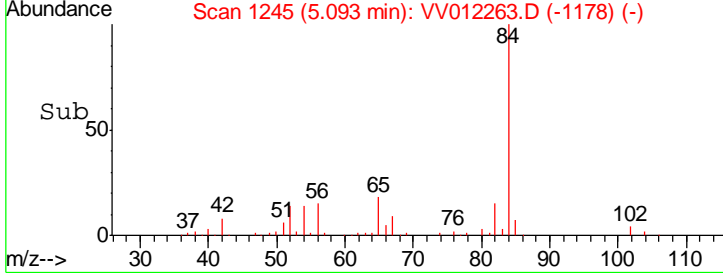
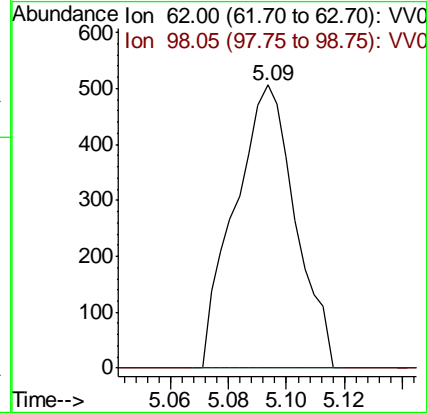
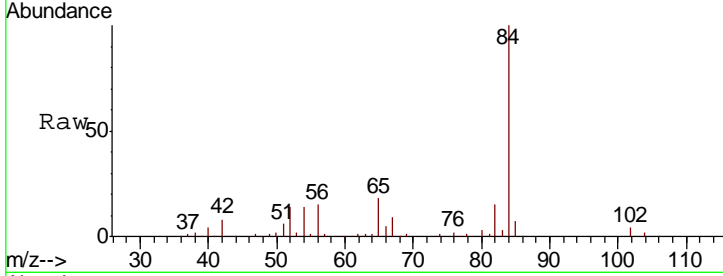




#27
 1,2-Dichloroethane
 Concen: 0.057 ug/L
 RT: 5.09 min Scan# 1245
 Delta R.T. -0.08 min
 Lab File: VV012263.D
 Acq: 16 Aug 2019 11:38

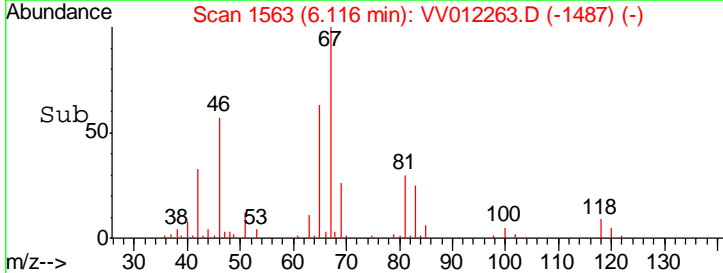
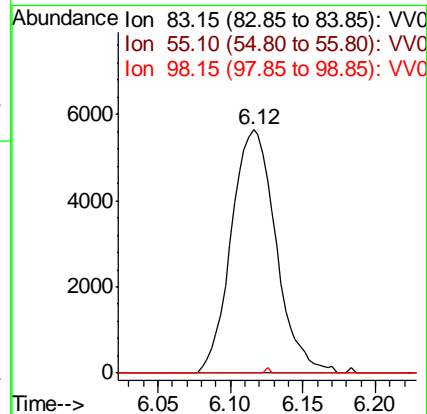
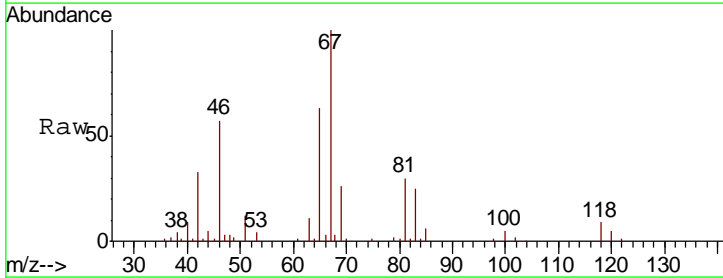
Instrument :
 MSVOA_V
 ClientSampled :
 VBLK37

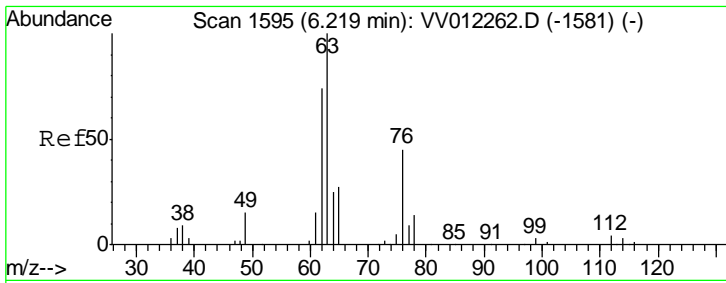
Tgt Ion	Resp	Lower	Upper
62	100		
98	0.0	7.5	11.3#



#35
 Methylcyclohexane
 Concen: 0.597 ug/L
 RT: 6.12 min Scan# 1563
 Delta R.T. -0.05 min
 Lab File: VV012263.D
 Acq: 16 Aug 2019 11:38

Tgt Ion	Resp	Lower	Upper
83	100		
55	0.0	62.2	93.2#
98	0.2	39.2	58.8#

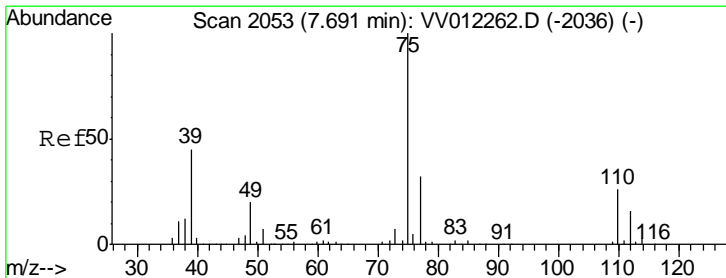
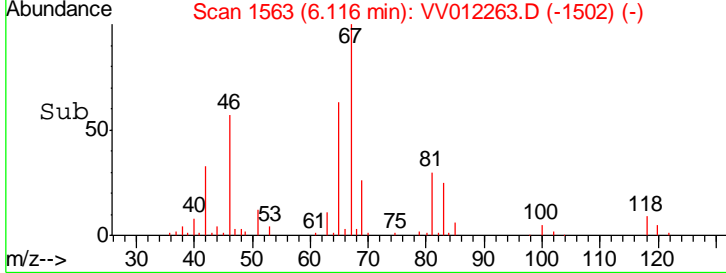
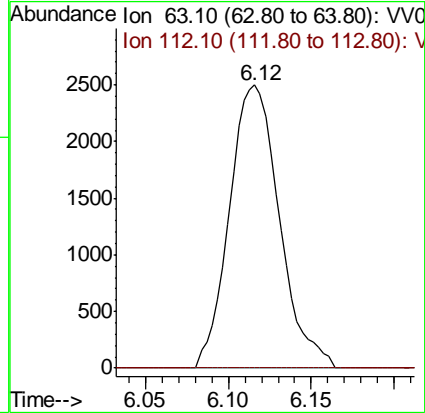
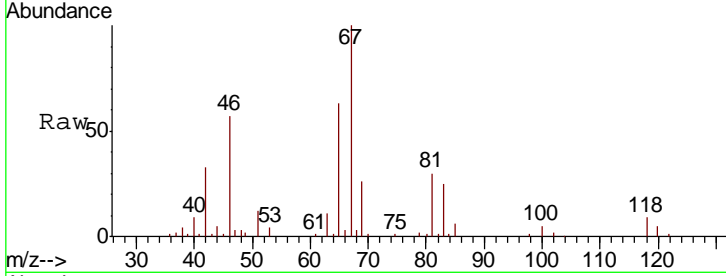




#37
 1,2-Dichloropropane
 Concen: 0.437 ug/L
 RT: 6.12 min Scan# 1563
 Delta R.T. -0.10 min
 Lab File: VV012263.D
 Acq: 16 Aug 2019 11:38

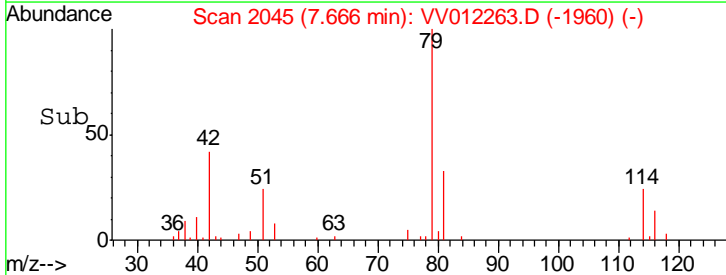
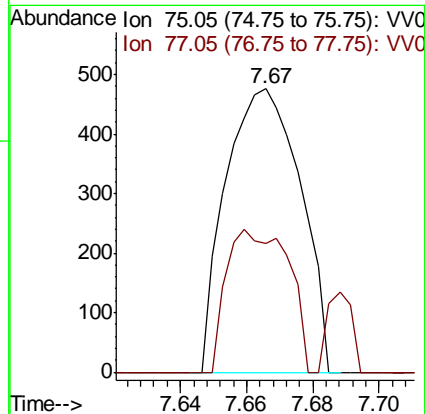
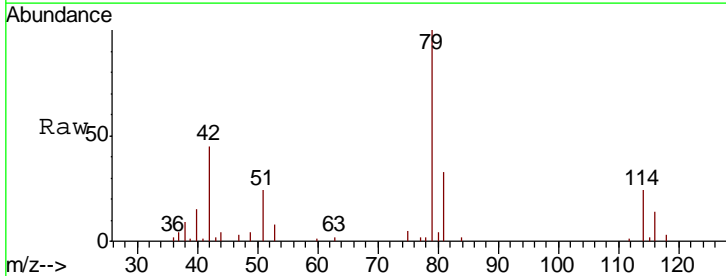
Instrument : MSVOA_V
 ClientSampled : VBLK37

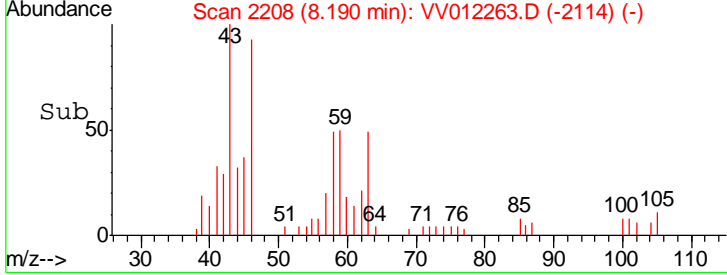
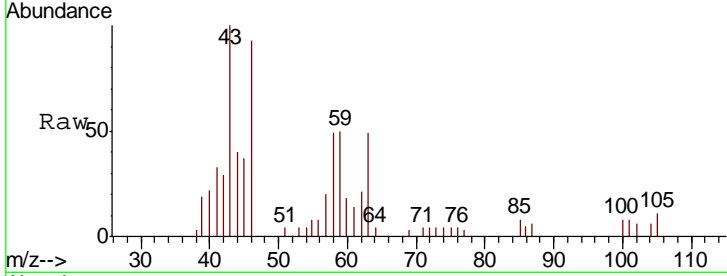
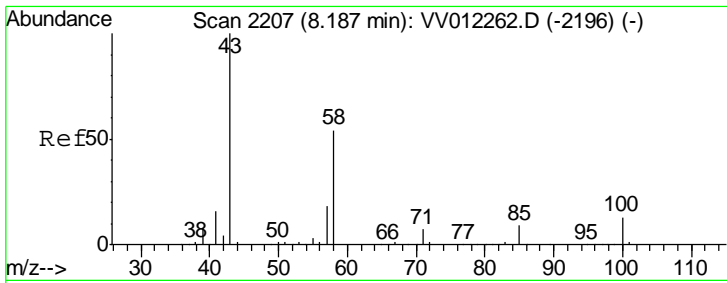
Tgt Ion	Resp	Lower	Upper
63	100		
112	0.0	3.8	5.8#



#44
 trans-1,3-Dichloropropene
 Concen: 0.057 ug/L
 RT: 7.67 min Scan# 2045
 Delta R.T. -0.03 min
 Lab File: VV012263.D
 Acq: 16 Aug 2019 11:38

Tgt Ion	Resp	Lower	Upper
75	100		
77	45.4	22.5	41.7#





#48
 2-Hexanone
 Concen: 1.595 ug/L
 RT: 8.19 min Scan# 2208
 Delta R.T. 0.00 min
 Lab File: VV012263.D
 Acq: 16 Aug 2019 11:38

Instrument :
 MSVOA_V
 ClientSampleID :
 VBLK37

Tgt Ion: 43 Resp: 7410

Ion	Ratio	Lower	Upper
43	100		
58	42.5	43.0	64.4#
57	18.7	14.9	22.3
100	3.9	10.3	15.5#

