

Data Path : Z:\voasrv\HPCHEM1\MSVOA\_V\Data\VV081622\  
 Data File : VV027402.D  
 Acq On : 16 Aug 2022 10:07  
 Operator : SY/MD  
 Sample : VV0816WBL01  
 Misc : 25.0mL/MSVOA\_V/WATER  
 ALS Vial : 4 Sample Multiplier: 1

Instrument :  
 MSVOA\_V  
 ClientSampleId :  
 VBLK205

Quant Time: Aug 16 18:34:22 2022  
 Quant Method : Z:\voasrv\HPCHEM1\MSVOA\_V\Method\SFAMVTR081122WMA.M  
 Quant Title : TRACE VOA SFAM1.0  
 QLast Update : Tue Aug 16 00:24:20 2022  
 Response via : Initial Calibration

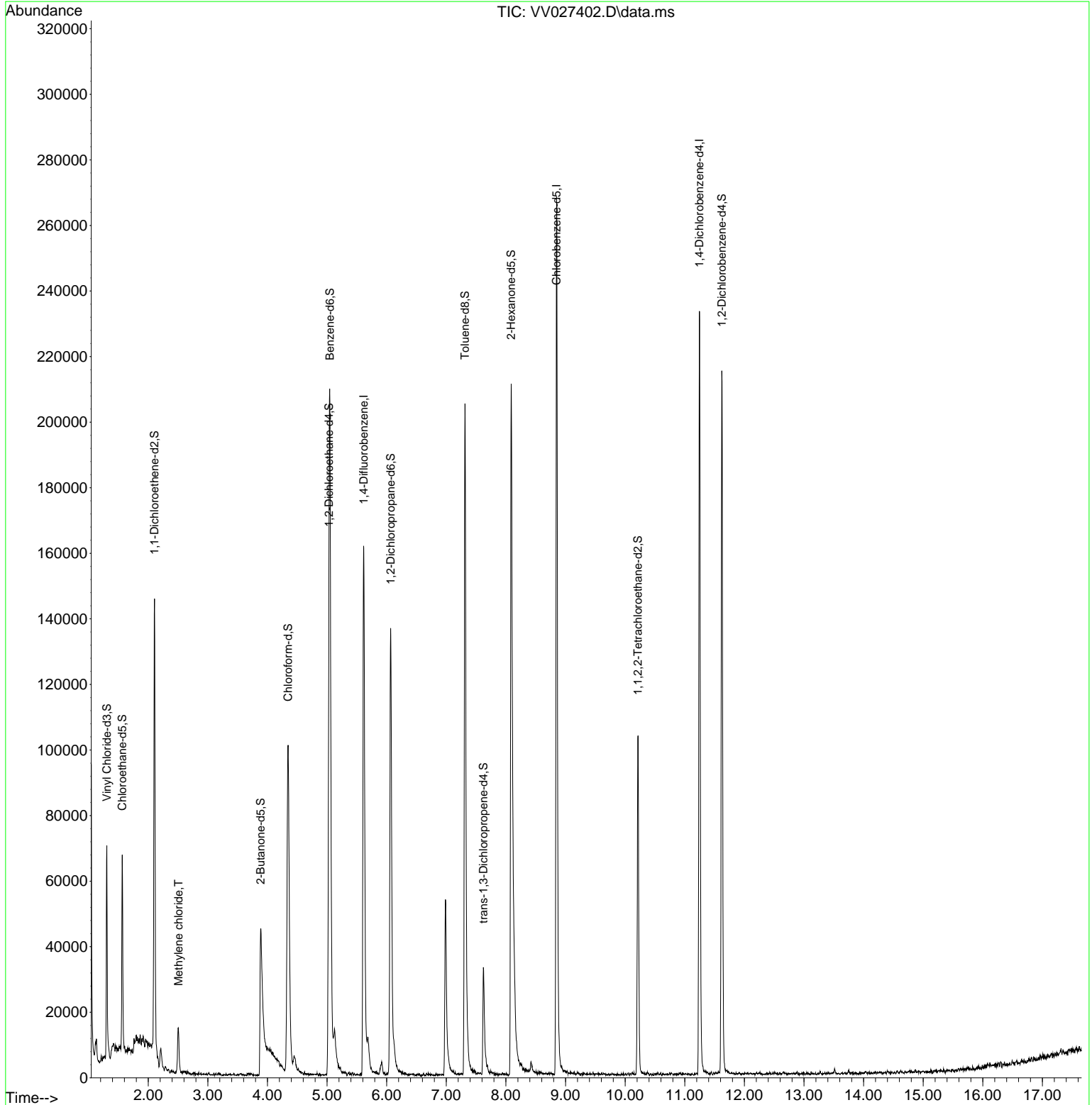
Compound	R.T.	QIon	Response	Conc	Units	Dev(Min)
-----						
Internal Standards						
1) 1,4-Difluorobenzene	5.616	114	135501	5.000	ug/L	0.00
28) Chlorobenzene-d5	8.850	117	149618	5.000	ug/L	0.00
58) 1,4-Dichlorobenzene-d4	11.246	152	61513	5.000	ug/L	0.00
System Monitoring Compounds						
4) Vinyl Chloride-d3	1.304	65	44703	3.797	ug/L	0.00
Spiked Amount	5.000	Range 40 - 130	Recovery	=	76.000%	
7) Chloroethane-d5	1.564	69	36987	4.326	ug/L	0.00
Spiked Amount	5.000	Range 65 - 130	Recovery	=	86.600%	
11) 1,1-Dichloroethene-d2	2.105	63	72881	3.414	ug/L	0.00
Spiked Amount	5.000	Range 60 - 125	Recovery	=	68.200%	
20) 2-Butanone-d5	3.886	46	83195	41.729	ug/L	0.00
Spiked Amount	50.000	Range 40 - 130	Recovery	=	83.460%	
24) Chloroform-d	4.346	84	102797	4.761	ug/L	0.00
Spiked Amount	5.000	Range 70 - 125	Recovery	=	95.200%	
26) 1,2-Dichloroethane-d4	5.030	65	53369	5.189	ug/L	0.00
Spiked Amount	5.000	Range 70 - 130	Recovery	=	103.800%	
32) Benzene-d6	5.047	84	182120	4.126	ug/L	0.00
Spiked Amount	5.000	Range 70 - 125	Recovery	=	82.600%	
36) 1,2-Dichloropropane-d6	6.066	67	67431	4.941	ug/L	0.00
Spiked Amount	5.000	Range 60 - 140	Recovery	=	98.800%	
41) Toluene-d8	7.313	98	144221	3.569	ug/L	0.00
Spiked Amount	5.000	Range 70 - 130	Recovery	=	71.400%	
43) trans-1,3-Dichloroprop...	7.622	79	19722	4.172	ug/L	0.00
Spiked Amount	5.000	Range 55 - 130	Recovery	=	83.400%	
46) 2-Hexanone-d5	8.088	63	88836	48.562	ug/L	0.00
Spiked Amount	50.000	Range 45 - 130	Recovery	=	97.120%	
56) 1,1,2,2-Tetrachloroeth...	10.214	84	49106	4.974	ug/L	0.00
Spiked Amount	5.000	Range 65 - 120	Recovery	=	99.400%	
66) 1,2-Dichlorobenzene-d4	11.622	152	55561	5.233	ug/L	0.00
Spiked Amount	5.000	Range 80 - 120	Recovery	=	104.600%	
Target Compounds						
16) Methylene chloride	2.506	84	5476	0.349	ug/L	97
-----						

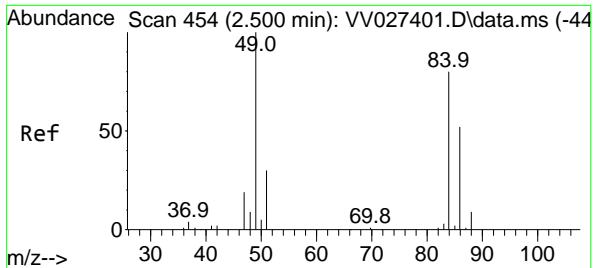
(#) = qualifier out of range (m) = manual integration (+) = signals summed

Data Path : Z:\voasrv\HPCHEM1\MSVOA\_V\Data\VV081622\  
 Data File : VV027402.D  
 Acq On : 16 Aug 2022 10:07  
 Operator : SY/MD  
 Sample : VV0816WBL01  
 Misc : 25.0mL/MSVOA\_V/WATER  
 ALS Vial : 4 Sample Multiplier: 1

Instrument :  
 MSVOA\_V  
 ClientSampleId :  
 VBLK205

Quant Time: Aug 16 18:34:22 2022  
 Quant Method : Z:\voasrv\HPCHEM1\MSVOA\_V\Method\SFAMVTR081122WMA.M  
 Quant Title : TRACE VOA SFAM1.0  
 QLast Update : Tue Aug 16 00:24:20 2022  
 Response via : Initial Calibration





Methylene chloride  
 Concen: 0.349 ug/L  
 RT: 2.506 min Scan# 41  
 Delta R.T. 0.006 min  
 Lab File: VV027402.D  
 Acq: 16 Aug 2022 10:07

Instrument : MSVOA\_V  
 ClientSampleId : VBLK205

Tgt Ion: 84 Resp: 5476

Ion	Ratio	Lower	Upper
84	100		
86	68.3	45.1	83.9
49	128.2	91.2	169.4

