

Data Path : Z:\voasrv\HPCHEM1\MSVOA_V\Data\VV081623\
 Data File : VV031820.D
 Acq On : 16 Aug 2023 14:35
 Operator : SY/MD
 Sample : 03967-08
 Misc : 5.0mL/MSVOA_V/WATER
 ALS Vial : 7 Sample Multiplier: 1

Instrument :
 MSVOA_V
 ClientSampleId :
 VHBLK002

Integration Parameters: LSCINT.P

Integrator: RTE
 Smoothing : OFF
 Sampling : 1
 Start Thrs : 0.2
 Stop Thrs : 0

Filtering: 5
 Min Area: 0 % of largest Peak
 Max Peaks: 100
 Peak Location: TOP

If leading or trailing edge < 100 prefer < Baseline drop else tangent >
 Peak separation: 5

Method : Z:\voasrv\HPCHEM1\MSVOA_V\Method\SFAMVLM072523WMA.M
 Title : VOC Analysis

Signal : TIC: VV031820.D\data.ms

peak #	R.T. min	first scan	max scan	last scan	PK TY	peak height	corr. area	corr. % max.	% of total
1	1.278	68	74	91	rVB	291253	312117	15.50%	2.286%
2	1.532	145	153	171	rVB	246356	302035	15.00%	2.212%
3	2.060	307	317	336	rBV	458994	673429	33.44%	4.932%
4	2.452	433	439	450	rVB8	6765	10900	0.54%	0.080%
5	2.529	460	463	467	rVB4	1145	832	0.04%	0.006%
6	2.555	467	471	474	rBV5	1931	1685	0.08%	0.012%
7	2.703	513	517	521	rBV5	1642	1708	0.08%	0.013%
8	2.857	560	565	568	rBV6	1314	1292	0.06%	0.009%
9	3.124	643	648	650	rBV5	1004	839	0.04%	0.006%
10	3.336	712	714	717	rVV4	1520	922	0.05%	0.007%
11	3.571	784	787	793	rVB5	1048	883	0.04%	0.006%
12	3.613	796	800	801	rBV3	1504	1017	0.05%	0.007%
13	3.638	804	808	812	rVV7	1486	1301	0.06%	0.010%
14	3.793	847	856	884	rBV	130856	363898	18.07%	2.665%
15	4.256	984	1000	1022	rBV	319726	843490	41.88%	6.178%
16	4.506	1075	1078	1084	rVB6	1348	1134	0.06%	0.008%
17	4.532	1084	1086	1090	rVB4	1783	1163	0.06%	0.009%
18	4.725	1142	1146	1149	rBV5	1229	1037	0.05%	0.008%
19	4.802	1165	1170	1174	rBV5	1592	1488	0.07%	0.011%
20	4.963	1201	1220	1249	rBV2	755630	2014105	100.00%	14.752%
21	5.278	1314	1318	1321	rBV5	1502	1074	0.05%	0.008%
22	5.375	1345	1348	1352	rBV5	1439	1200	0.06%	0.009%
23	5.542	1387	1400	1423	rBV	412936	865565	42.98%	6.340%
24	5.831	1478	1490	1508	rBV3	45324	101583	5.04%	0.744%
25	5.995	1526	1541	1563	rBV	449946	933770	46.36%	6.839%
26	6.182	1595	1599	1602	rBV5	1847	1238	0.06%	0.009%
27	6.378	1657	1660	1665	rBV6	1155	1082	0.05%	0.008%
28	6.458	1682	1685	1691	rVB6	1645	1227	0.06%	0.009%
29	6.490	1691	1695	1699	rVB5	1507	1383	0.07%	0.010%
30	6.510	1699	1701	1706	rBV5	1456	1209	0.06%	0.009%
31	6.612	1729	1733	1736	rVB5	2187	1461	0.07%	0.011%
32	6.661	1744	1748	1751	rBV4	1435	1318	0.07%	0.010%
33	6.683	1752	1755	1760	rVB5	1227	1084	0.05%	0.008%
34	6.715	1760	1765	1768	rBV4	1372	1299	0.06%	0.010%
35	6.773	1779	1783	1787	rBV6	1071	1013	0.05%	0.007%
36	6.866	1808	1812	1813	rBV2	1351	857	0.04%	0.006%

Data Path : Z:\voasrv\HPCHEM1\MSVOA_V\Data\VV081623\
 Data File : VV031820.D
 Acq On : 16 Aug 2023 14:35
 Operator : SY/MD
 Sample : 03967-08
 Misc : 5.0mL/MSVOA_V/WATER
 ALS Vial : 7 Sample Multiplier: 1

Instrument :
 MSVOA_V
 ClientSampleId :
 VHBLK002

Integration Parameters: LSCINT.P

Integrator: RTE
 Smoothing : OFF
 Sampling : 1
 Start Thrs: 0.2
 Stop Thrs : 0

Filtering: 5
 Min Area: 0 % of largest Peak
 Max Peaks: 100
 Peak Location: TOP

If leading or trailing edge < 100 prefer < Baseline drop else tangent >
 Peak separation: 5

Method : Z:\voasrv\HPCHEM1\MSVOA_V\Method\SFAMVLM072523WMA.M
 Title : VOC Analysis

37	6.918	1816	1828	1847	rBV	200975	389491	19.34%	2.853%
38	7.101	1882	1885	1888	rVB5	1613	1026	0.05%	0.008%
39	7.249	1919	1931	1959	rBV	785093	1422743	70.64%	10.421%
40	7.558	2018	2027	2047	rVV	154649	278680	13.84%	2.041%
41	7.828	2106	2111	2114	rBV6	1563	1541	0.08%	0.011%
42	7.863	2118	2122	2124	rBV2	1175	899	0.04%	0.007%
43	7.972	2152	2156	2159	rBV5	1732	1808	0.09%	0.013%
44	8.034	2165	2175	2209	rBV2	263896	561931	27.90%	4.116%
45	8.526	2326	2328	2332	rVB5	1687	1141	0.06%	0.008%
46	8.548	2332	2335	2339	rBV4	1766	1356	0.07%	0.010%
47	8.587	2345	2347	2351	rVB3	1664	1293	0.06%	0.009%
48	8.648	2363	2366	2370	rBV3	1348	1066	0.05%	0.008%
49	8.789	2395	2410	2433	rBV	672184	1130948	56.15%	8.283%
50	9.046	2488	2490	2492	rBV3	1637	835	0.04%	0.006%
51	9.169	2526	2528	2533	rVB5	1753	1325	0.07%	0.010%
52	9.310	2570	2572	2577	rBV6	1008	837	0.04%	0.006%
53	9.497	2625	2630	2634	rBV6	1557	1748	0.09%	0.013%
54	9.587	2656	2658	2662	rVB4	1378	951	0.05%	0.007%
55	9.619	2662	2668	2669	rBV5	1345	1270	0.06%	0.009%
56	9.783	2717	2719	2722	rBV3	1567	1150	0.06%	0.008%
57	9.815	2726	2729	2731	rVV3	1418	853	0.04%	0.006%
58	9.841	2731	2737	2742	rVV9	1157	1657	0.08%	0.012%
59	9.866	2742	2745	2747	rVV4	1219	855	0.04%	0.006%
60	9.876	2747	2748	2754	rVB5	2144	1831	0.09%	0.013%
61	9.905	2754	2757	2759	rBV4	1379	955	0.05%	0.007%
62	9.950	2769	2771	2775	rVV5	1380	813	0.04%	0.006%
63	10.159	2824	2836	2857	rBV	595523	951687	47.25%	6.971%
64	10.323	2882	2887	2888	rBV5	1265	1058	0.05%	0.008%
65	10.400	2904	2911	2914	rBV6	1817	1684	0.08%	0.012%
66	10.487	2934	2938	2942	rVB7	1467	1313	0.07%	0.010%
67	10.542	2949	2955	2958	rVB7	1072	1001	0.05%	0.007%
68	10.796	3031	3034	3037	rVB3	1513	964	0.05%	0.007%
69	10.815	3037	3040	3046	rVB7	1519	1245	0.06%	0.009%
70	10.995	3090	3096	3100	rBV8	1695	2181	0.11%	0.016%
71	11.120	3128	3135	3136	rBV5	1710	1727	0.09%	0.013%
72	11.130	3136	3138	3144	rVV6	2700	2707	0.13%	0.020%
73	11.191	3146	3157	3185	rVV	672056	1066609	52.96%	7.812%
74	11.477	3243	3246	3248	rBV4	1430	869	0.04%	0.006%
75	11.567	3262	3274	3292	rBV	827505	1311918	65.14%	9.609%
76	11.696	3311	3314	3318	rVB5	2137	1783	0.09%	0.013%

Data Path : Z:\voasrv\HPCHEM1\MSVOA_V\Data\VV081623\
 Data File : VV031820.D
 Acq On : 16 Aug 2023 14:35
 Operator : SY/MD
 Sample : 03967-08
 Misc : 5.0mL/MSVOA_V/WATER
 ALS Vial : 7 Sample Multiplier: 1

Instrument :
 MSVOA_V
 ClientSampleId :
 VHBLK002

Integration Parameters: LSCINT.P

Integrator: RTE
 Smoothing : OFF
 Sampling : 1
 Start Thrs : 0.2
 Stop Thrs : 0

Filtering: 5
 Min Area: 0 % of largest Peak
 Max Peaks: 100
 Peak Location: TOP

If leading or trailing edge < 100 prefer < Baseline drop else tangent >
 Peak separation: 5

Method : Z:\voasrv\HPCHEM1\MSVOA_V\Method\SFAMVLM072523WMA.M
 Title : VOC Analysis

77	11.728	3319	3324	3327	rVV6	1426	1295	0.06%	0.009%
78	11.744	3327	3329	3332	rVB3	1845	973	0.05%	0.007%
79	11.760	3332	3334	3339	rBV6	1231	1100	0.05%	0.008%
80	11.889	3368	3374	3378	rBV5	1228	1409	0.07%	0.010%
81	12.156	3452	3457	3460	rVB5	1513	1491	0.07%	0.011%
82	12.185	3460	3466	3468	rBV6	2816	3105	0.15%	0.023%
83	12.326	3508	3510	3512	rBV3	1645	1082	0.05%	0.008%
84	12.384	3525	3528	3532	rVB5	1452	967	0.05%	0.007%
85	12.422	3537	3540	3547	rVB5	1525	1614	0.08%	0.012%
86	12.583	3586	3590	3596	rBV7	1876	2371	0.12%	0.017%
87	12.638	3604	3607	3609	rBV3	1825	1058	0.05%	0.008%
88	12.786	3650	3653	3656	rBV3	1402	1034	0.05%	0.008%
89	13.146	3763	3765	3770	rVB4	1491	977	0.05%	0.007%
90	13.204	3780	3783	3786	rBV4	1739	1486	0.07%	0.011%
91	13.451	3852	3860	3872	rBV8	5596	10937	0.54%	0.080%
92	13.541	3886	3888	3892	rVB5	1559	994	0.05%	0.007%
93	13.689	3929	3934	3939	rBV6	3026	3771	0.19%	0.028%
94	13.766	3954	3958	3960	rBV5	1177	891	0.04%	0.007%
95	13.831	3975	3978	3982	rVB5	2577	1702	0.08%	0.012%
96	13.992	4023	4028	4033	rBV8	2346	3250	0.16%	0.024%
97	14.088	4055	4058	4061	rBV6	1364	1175	0.06%	0.009%
98	14.258	4108	4111	4115	rVB6	1356	975	0.05%	0.007%
99	14.512	4187	4190	4192	rBV4	1647	993	0.05%	0.007%
100	14.963	4327	4330	4332	rBV4	1737	1000	0.05%	0.007%

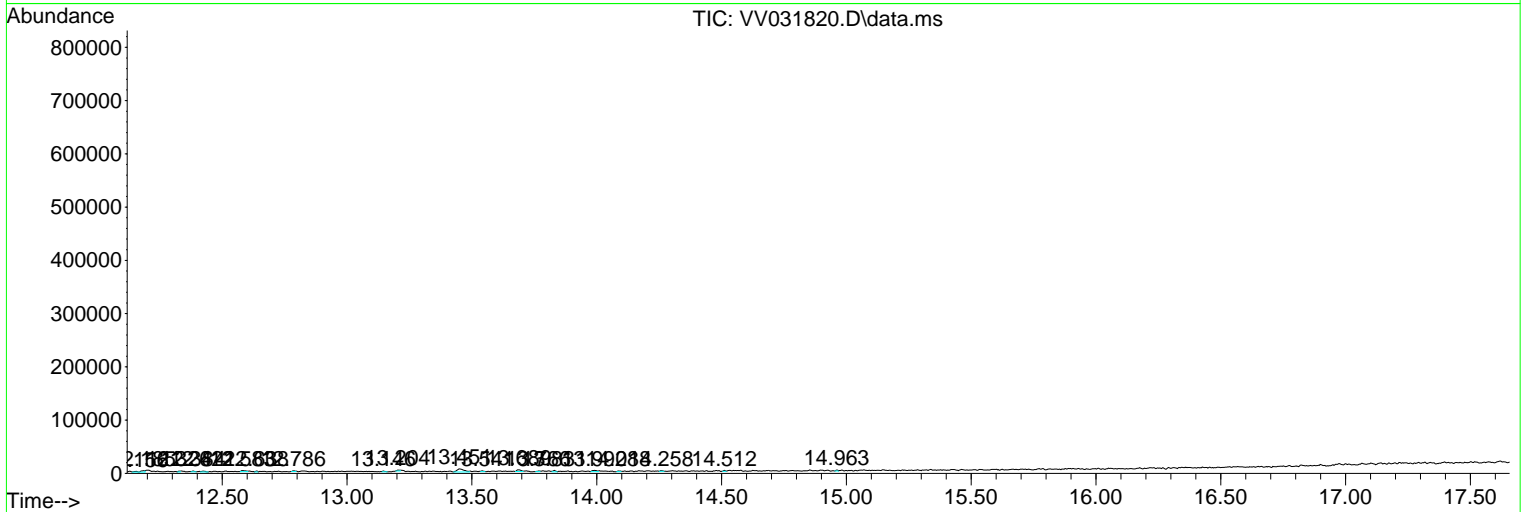
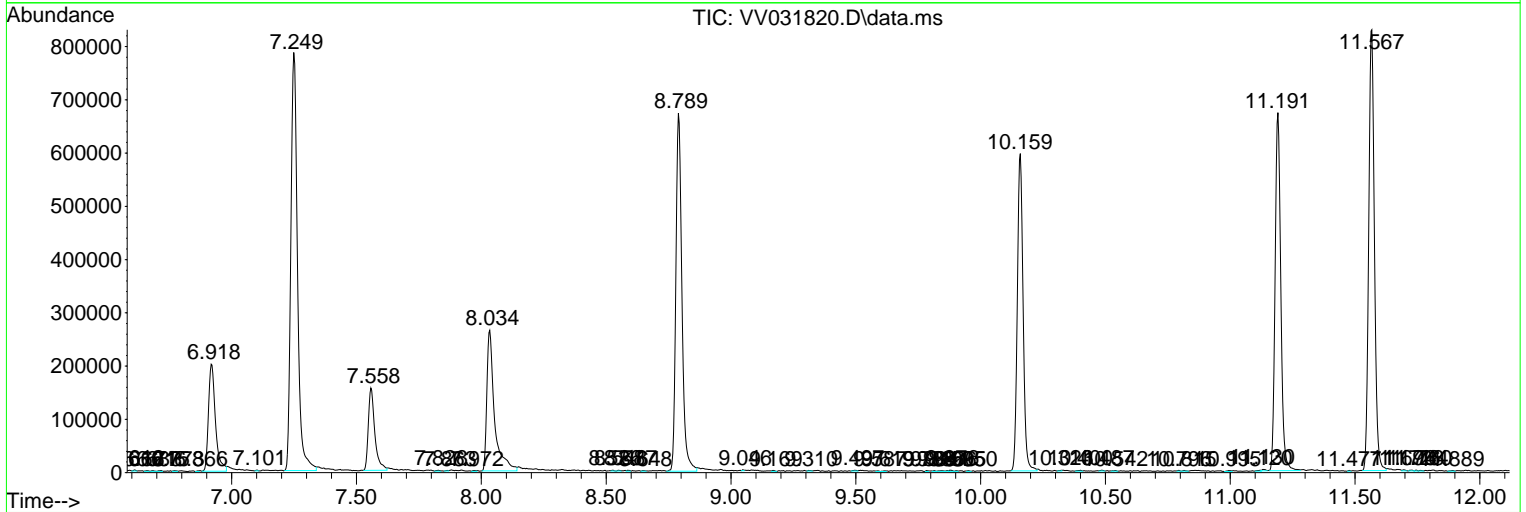
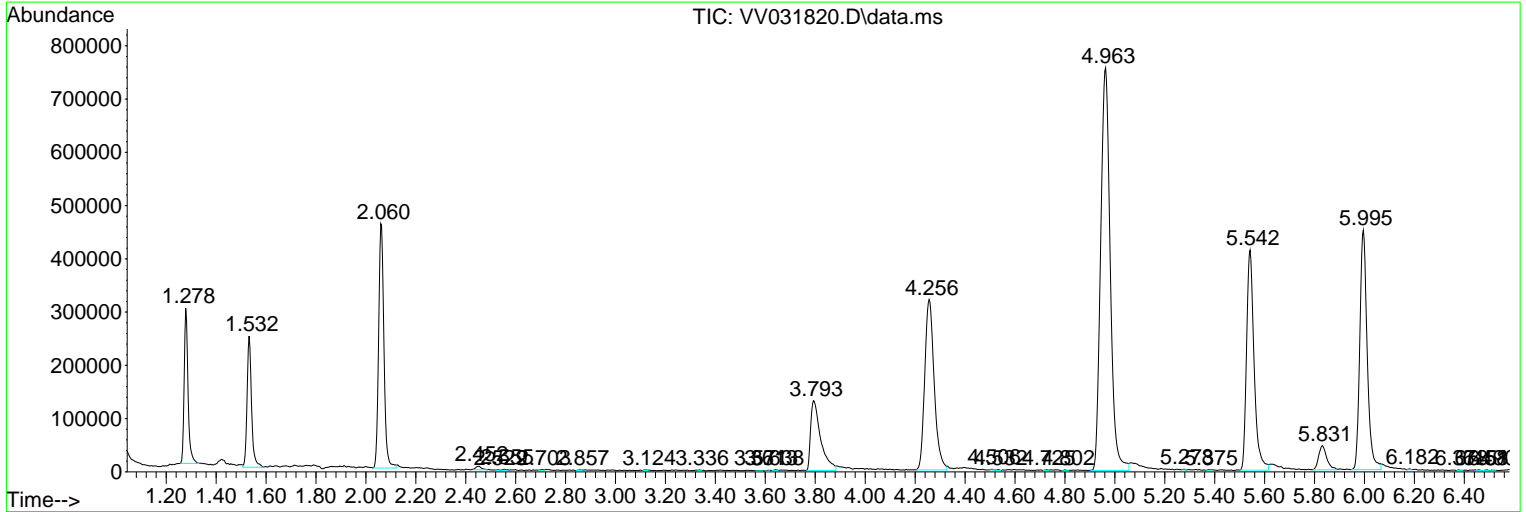
Sum of corrected areas: 13653037

Data Path : Z:\voasrv\HPCHEM1\MSVOA_V\Data\VV081623\
 Data File : VV031820.D
 Acq On : 16 Aug 2023 14:35
 Operator : SY/MD
 Sample : 03967-08
 Misc : 5.0mL/MSVOA_V/WATER
 ALS Vial : 7 Sample Multiplier: 1

Instrument :
 MSVOA_V
 ClientSampleId :
 VHBLK002

Quant Method : Z:\voasrv\HPCHEM1\MSVOA_V\Method\SFAMVLM072523WMA.M
 Quant Title : VOC Analysis

TIC Library : C:\Database\NIST20.L
 TIC Integration Parameters: LSCINT.P



Library Search Compound Report

Data Path : Z:\voasrv\HPCHEM1\MSVOA_V\Data\VV081623\
Data File : VV031820.D
Acq On : 16 Aug 2023 14:35
Operator : SY/MD
Sample : 03967-08
Misc : 5.0mL/MSVOA_V/WATER
ALS Vial : 7 Sample Multiplier: 1

Instrument :
MSVOA_V
ClientSampleId :
VHBLK002

Quant Method : Z:\voasrv\HPCHEM1\MSVOA_V\Method\SFAMVLM072523WMA.M
Quant Title : VOC Analysis

TIC Library : C:\Database\NIST20.L
TIC Integration Parameters: LSCINT.P

No Library Search Compounds Detected

Data Path : Z:\voasrv\HPCHEM1\MSVOA_V\Data\VV081623\
Data File : VV031820.D
Acq On : 16 Aug 2023 14:35
Operator : SY/MD
Sample : 03967-08
Misc : 5.0mL/MSVOA_V/WATER
ALS Vial : 7 Sample Multiplier: 1

Instrument :
MSVOA_V
ClientSampleId :
VHBLK002

Quant Method : Z:\voasrv\HPCHEM1\MSVOA_V\Method\SFAMVLM072523WMA.M
Quant Title : VOC Analysis

TIC Library : C:\Database\NIST0.L
TIC Integration Parameters: LSCINT.P

TIC Top Hit name	RT	EstConc	Units	Response	--Internal Standard--		
					#	RT	Resp Conc
