

Data Path : Z:\VOASRV\HPCHEM1\MSVOA V\DATA\VV081718\
 Data File : VV007058.D
 Acq On : 17 Aug 2018 16:49
 Operator : SY/MD
 Sample : J4488-06
 Misc : 25.0 mL/MSVOA V/WATER
 ALS Vial : 15 Sample Multiplier: 1

Instrument :
 MSVOA_V
 ClientSampled :

Quant Time: Aug 18 03:39:12 2018
 Quant Method : Z:\VOASRV\HPCHEM1\MSVOA_V\METHOD\SOMVTR080918WMA.M
 Quant Title : TRACE VOA SOM01.0
 QLast Update : Sat Aug 18 03:36:46 2018
 Response via : Initial Calibration

Internal Standards	R.T.	QIon	Response	Conc	Units	Dev(Min)
1) 1,4-Difluorobenzene	5.67	114	229459	5.00	ug/L	0.00
28) Chlorobenzene-d5	8.90	117	218709	5.00	ug/L	0.00
60) 1,4-Dichlorobenzene-d4	11.30	152	86513	5.00	ug/L	0.00

System Monitoring Compounds

4) Vinyl Chloride-d3	1.32	65	84811	5.73	ug/L	0.00
Spiked Amount	5.000	Range	40 - 130	Recovery	=	114.60%
7) Chloroethane-d5	1.58	69	73628	5.86	ug/L	0.00
Spiked Amount	5.000	Range	65 - 130	Recovery	=	117.20%
11) 1,1-Dichloroethene-d2	2.14	63	802197	28.86	ug/L	0.00
Spiked Amount	5.000	Range	60 - 125	Recovery	=	577.20%#
20) 2-Butanone-d5	3.97	46	211866	49.74	ug/L	0.00
Spiked Amount	50.000	Range	40 - 130	Recovery	=	99.48%
24) Chloroform-d	4.40	84	169121	5.63	ug/L	0.00
Spiked Amount	5.000	Range	70 - 125	Recovery	=	112.60%
26) 1,2-Dichloroethane-d4	5.09	65	85742	5.65	ug/L	0.00
Spiked Amount	5.000	Range	70 - 130	Recovery	=	113.00%
32) Benzene-d6	5.11	84	333275	5.93	ug/L	0.00
Spiked Amount	5.000	Range	70 - 125	Recovery	=	118.60%
36) 1,2-Dichloropropane-d6	6.12	67	112181	5.84	ug/L	0.00
Spiked Amount	5.000	Range	60 - 140	Recovery	=	116.80%
41) Toluene-d8	7.37	98	243794	5.10	ug/L	0.00
Spiked Amount	5.000	Range	70 - 130	Recovery	=	102.00%
43) trans-1,3-Dichloropropene-	7.67	79	32154	4.81	ug/L	0.00
Spiked Amount	5.000	Range	55 - 130	Recovery	=	96.20%
46) 2-Hexanone-d5	8.15	63	87912	32.17	ug/L	0.00
Spiked Amount	50.000	Range	45 - 130	Recovery	=	64.34%
57) 1,1,2,2-Tetrachloroethane-	10.27	84	79656	5.32	ug/L	0.00
Spiked Amount	5.000	Range	65 - 120	Recovery	=	106.40%
64) 1,2-Dichlorobenzene-d4	11.68	152	88680	5.89	ug/L	0.00
Spiked Amount	5.000	Range	80 - 120	Recovery	=	117.80%

Target Compounds

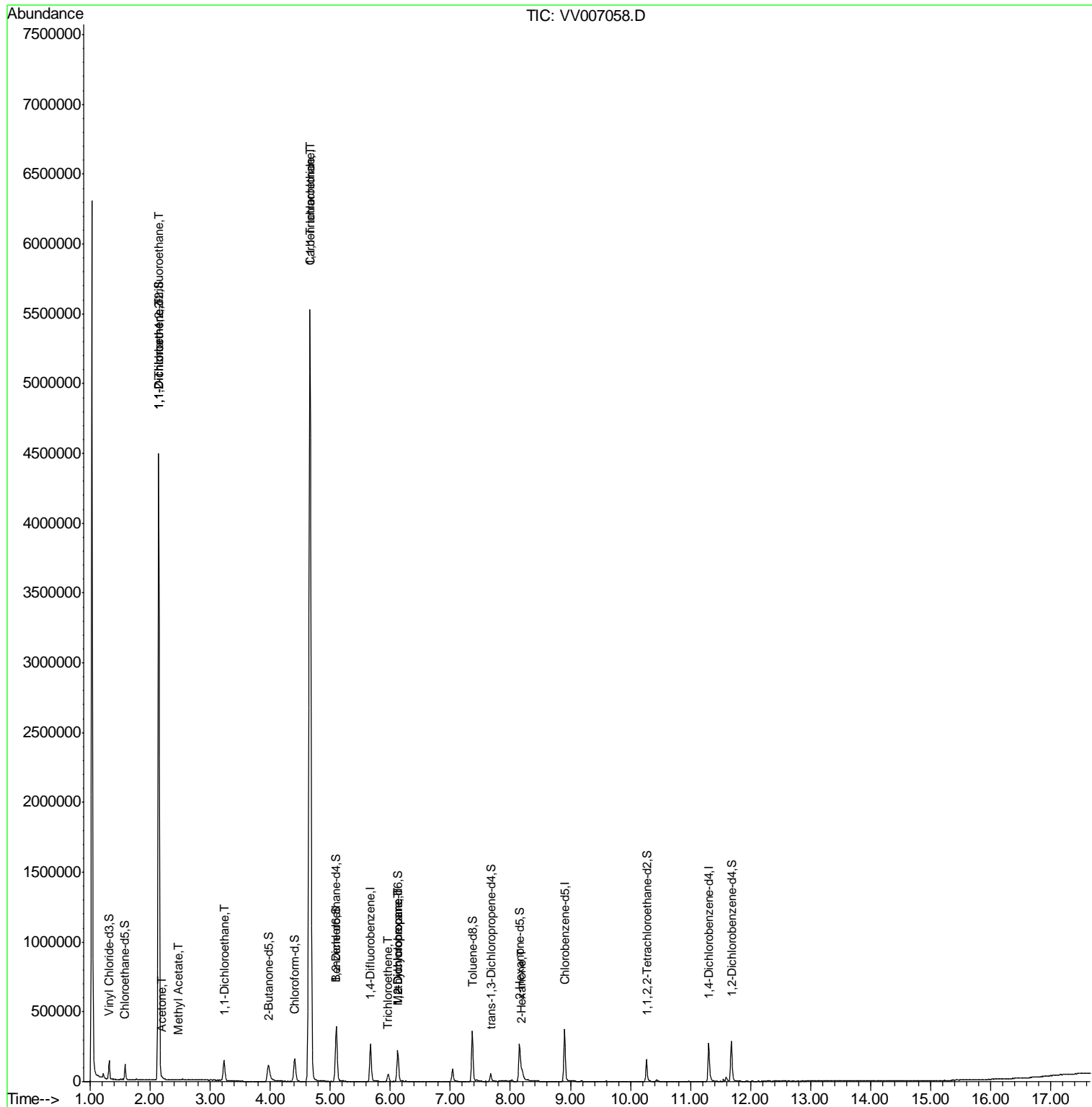
Target Compounds	R.T.	QIon	Response	Conc	Units	Ovalue
10) 1,1,2-Trichloro-1,2,2-trif	2.14	101	4489	0.264	ug/L #	30
12) 1,1-Dichloroethene	2.14	96	1396349	84.744	ug/L #	70
13) Acetone	2.20	43	6473	2.951	ug/L	89
15) Methyl Acetate	2.47	43	2853	0.462	ug/L	98
19) 1,1-Dichloroethane	3.23	63	145552	4.569	ug/L	99
29) 1,1,1-Trichloroethane	4.66	97	4414872	151.388	ug/L	98
31) Carbon tetrachloride	4.66	117	594880	24.324	ug/L	100
34) Trichloroethene	5.96	95	17651	0.972	ug/L	93
35) Methylcyclohexane	6.13	83	26673	0.914	ug/L #	15
37) 1,2-Dichloropropane	6.12	63	11358	0.548	ug/L #	88
48) 2-Hexanone	8.20	43	26631	3.370	ug/L #	89

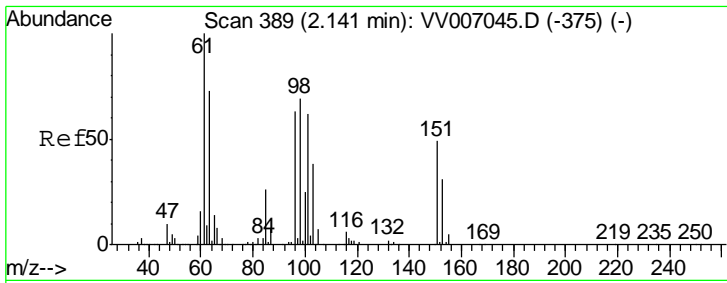
(#) = qualifier out of range (m) = manual integration (+) = signals summed

Data Path : Z:\VOASRV\HPCHEM1\MSVOA V\DATA\VV081718\
 Data File : VV007058.D
 Acq On : 17 Aug 2018 16:49
 Operator : SY/MD
 Sample : J4488-06
 Misc : 25.0 mL/MSVOA V/WATER
 ALS Vial : 15 Sample Multiplier: 1

Instrument :
 MSVOA_V
 ClientSampled :

Quant Time: Aug 18 03:39:12 2018
 Quant Method : Z:\VOASRV\HPCHEM1\MSVOA_V\METHOD\SOMVTR080918WMA.M
 Quant Title : TRACE VOA SOM01.0
 QLast Update : Sat Aug 18 03:36:46 2018
 Response via : Initial Calibration

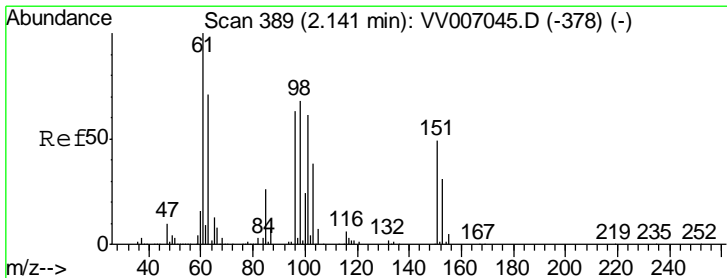
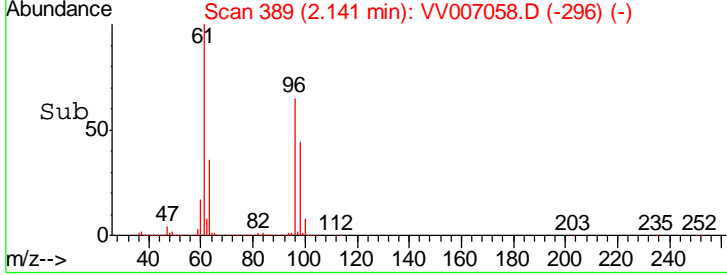
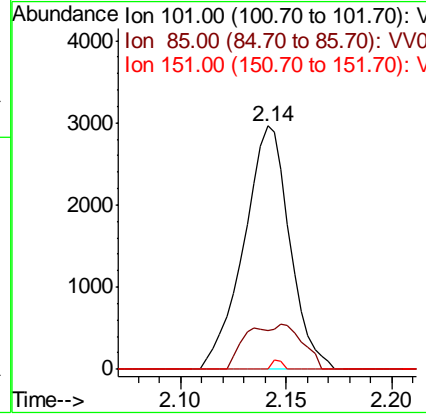
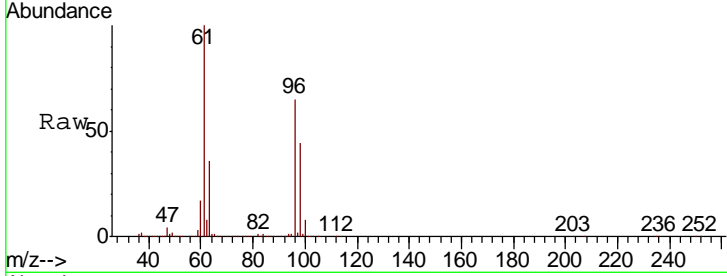




#10
 1,1,2-Trichloro-1,2,2-trifluoroethane
 Concen: 0.264 ug/L
 RT: 2.14 min Scan# 389
 Delta R.T. -0.00 min
 Lab File: VV007058.D
 Acq: 17 Aug 2018 16:49

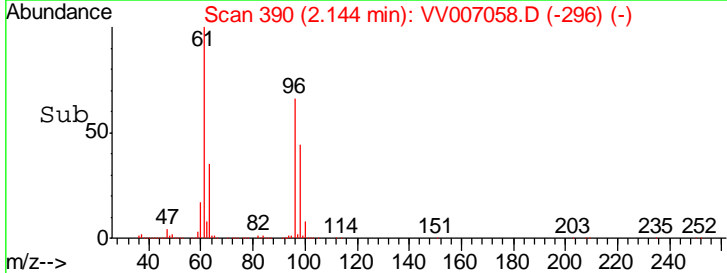
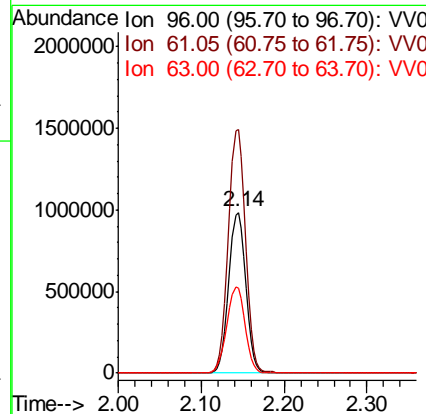
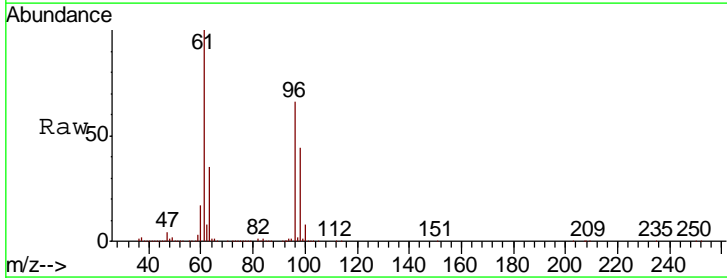
Instrument :
 MSVOA_V
 ClientSampled :

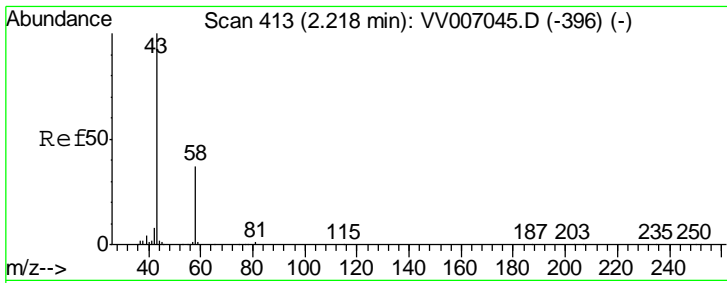
Tgt Ion	Resp	Lower	Upper
101	100		
85	22.3	33.9	50.9#
151	1.0	64.1	96.1#



#12
 1,1-Dichloroethene
 Concen: 84.744 ug/L
 RT: 2.14 min Scan# 390
 Delta R.T. 0.00 min
 Lab File: VV007058.D
 Acq: 17 Aug 2018 16:49

Tgt Ion	Resp	Lower	Upper
96	100		
61	151.5	111.6	207.4
63	52.5	84.9	157.7#

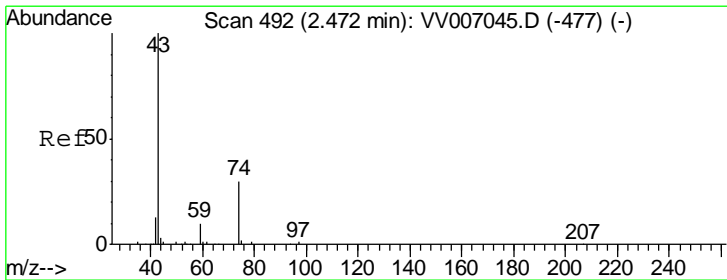
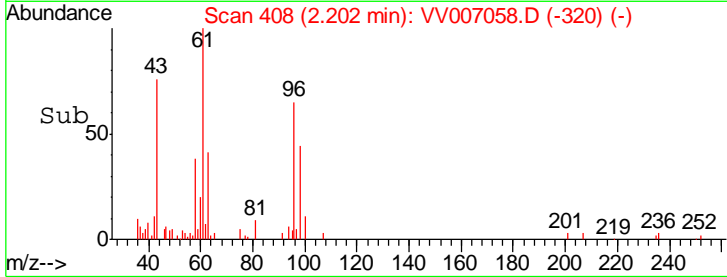
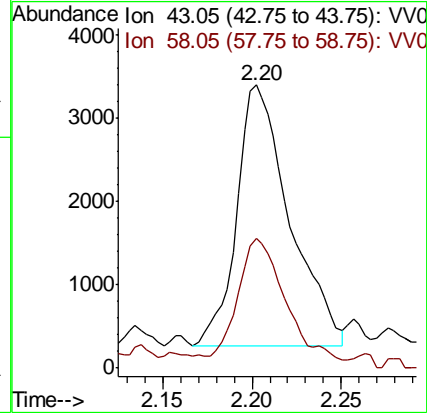
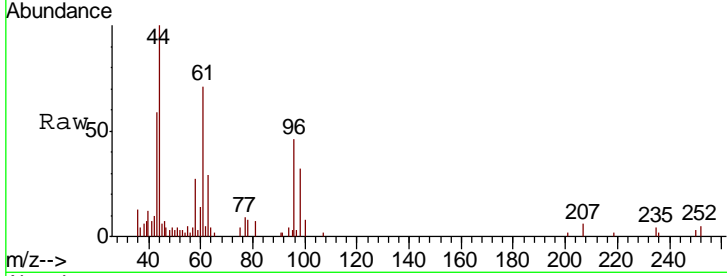




#13
 Acetone
 Concen: 2.951 ug/L
 RT: 2.20 min Scan# 408
 Delta R.T. -0.02 min
 Lab File: VV007058.D
 Acq: 17 Aug 2018 16:49

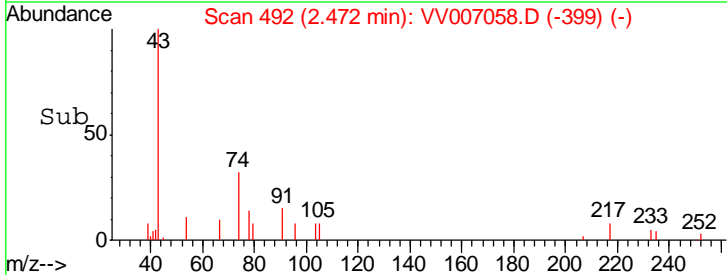
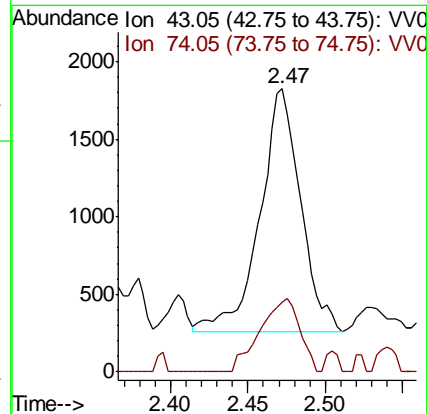
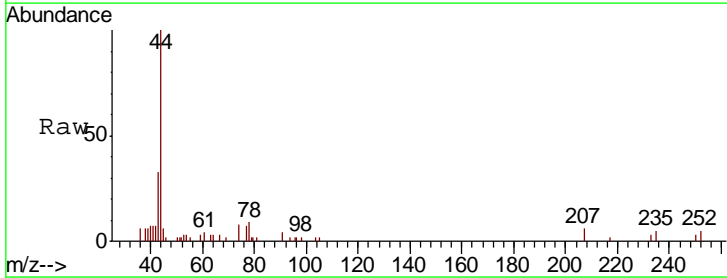
Instrument :
 MSVOA_V
 ClientSampled :

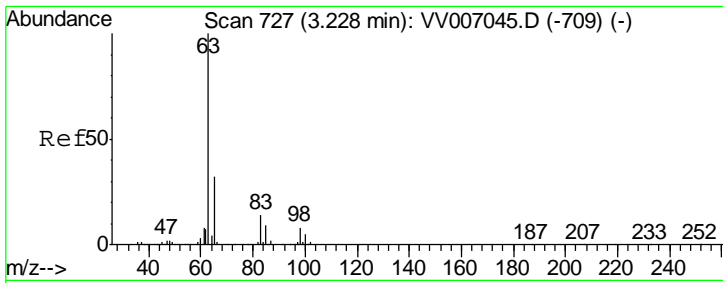
Tgt Ion: 43 Resp: 6473
 Ion Ratio Lower Upper
 43 100
 58 42.1 0.0 71.4



#15
 Methyl Acetate
 Concen: 0.462 ug/L
 RT: 2.47 min Scan# 492
 Delta R.T. -0.00 min
 Lab File: VV007058.D
 Acq: 17 Aug 2018 16:49

Tgt Ion: 43 Resp: 2853
 Ion Ratio Lower Upper
 43 100
 74 29.5 24.6 37.0

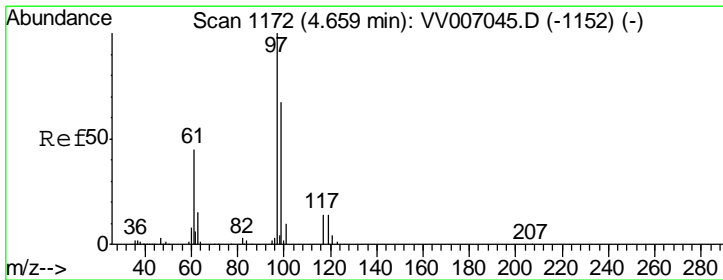
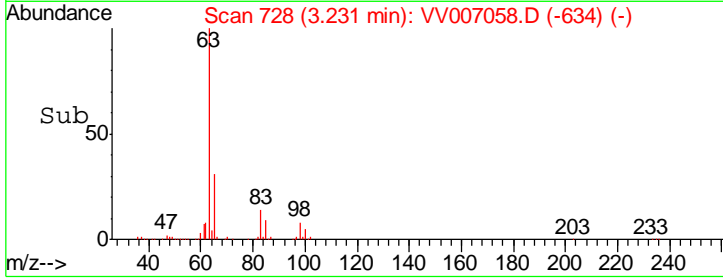
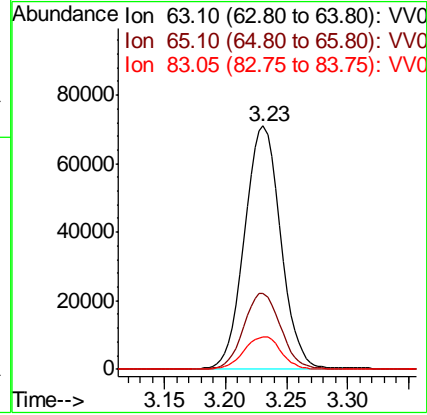
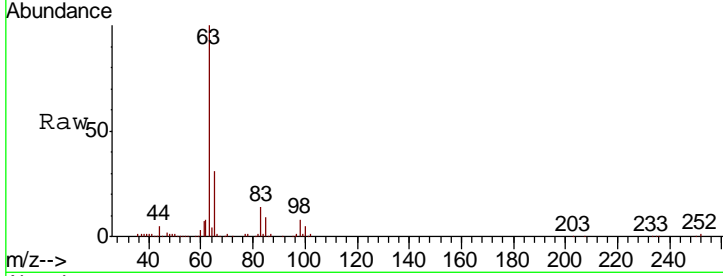




#19
 1,1-Dichloroethane
 Concen: 4.569 ug/L
 RT: 3.23 min Scan# 728
 Delta R.T. 0.00 min
 Lab File: VV007058.D
 Acq: 17 Aug 2018 16:49

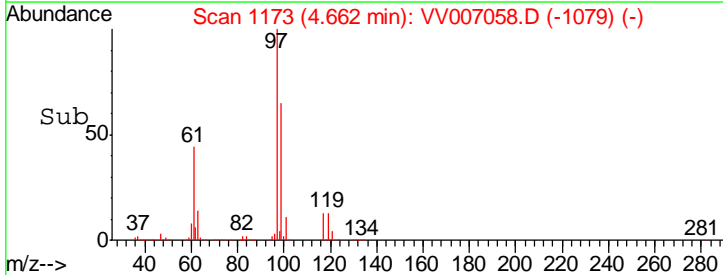
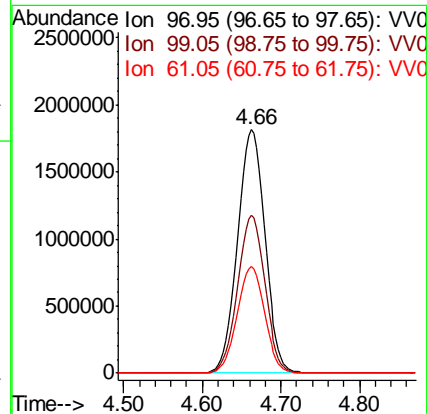
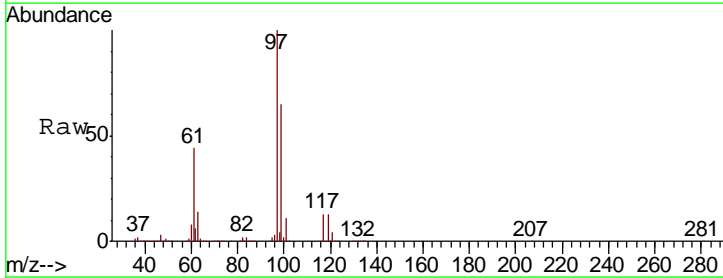
Instrument :
 MSVOA_V
 ClientSampled :

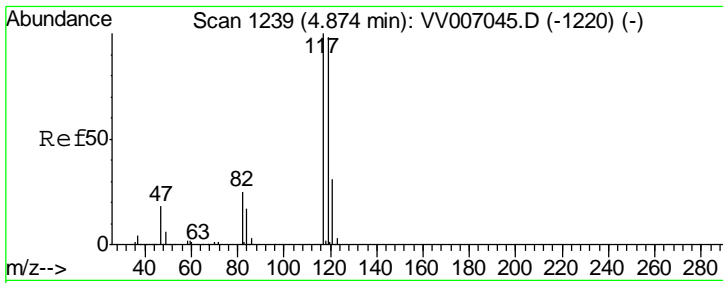
Tgt Ion	Resp	Lower	Upper
63	145552		
65	31.4	21.7	40.3
83	13.5	10.0	18.6



#29
 1,1,1-Trichloroethane
 Concen: 151.388 ug/L
 RT: 4.66 min Scan# 1173
 Delta R.T. 0.00 min
 Lab File: VV007058.D
 Acq: 17 Aug 2018 16:49

Tgt Ion	Resp	Lower	Upper
97	4414872		
99	64.6	51.0	76.6
61	43.8	36.6	54.8

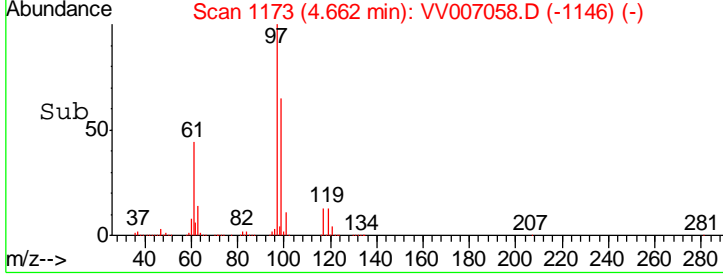
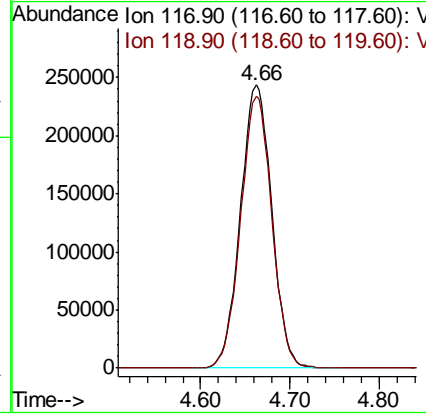
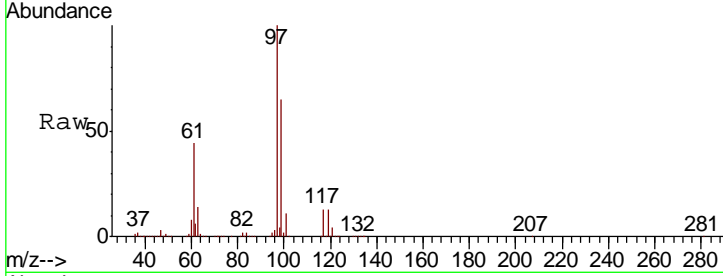




#31
 Carbon tetrachloride
 Concen: 24.324 ug/L
 RT: 4.66 min Scan# 1173
 Delta R.T. -0.21 min
 Lab File: VV007058.D
 Acq: 17 Aug 2018 16:49

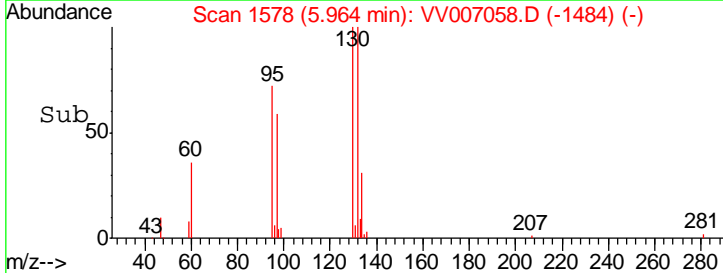
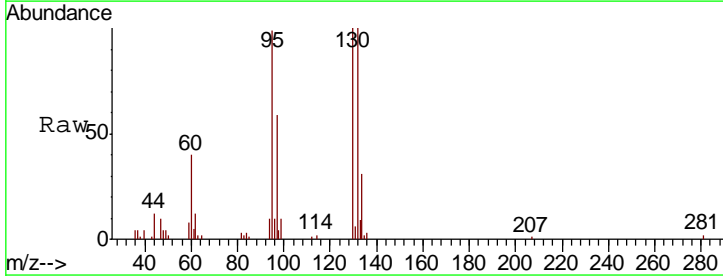
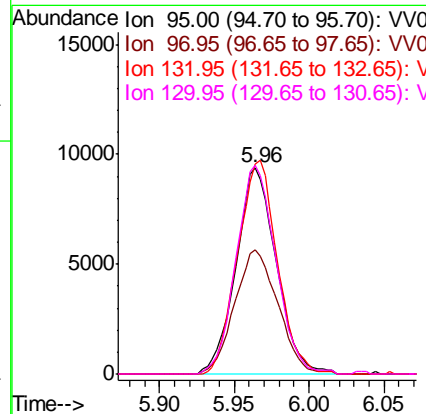
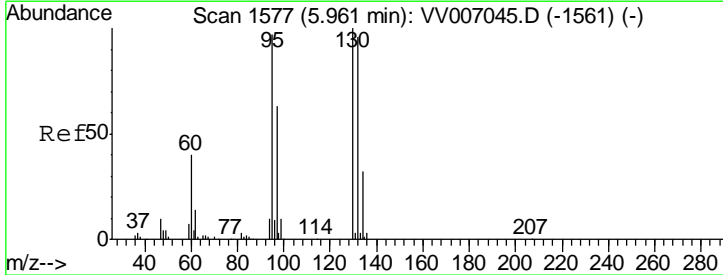
Instrument :
 MSVOA_V
 ClientSampled :

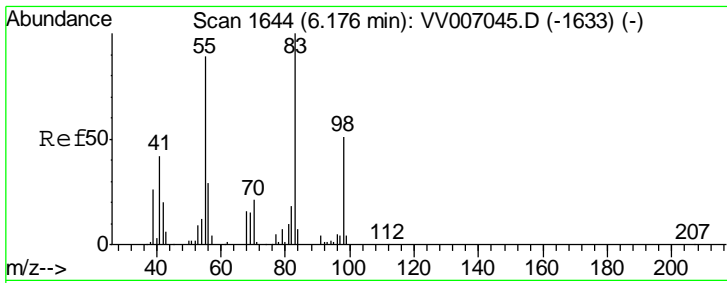
Tgt Ion	Resp	Lower	Upper
117	100		
119	95.7	76.2	114.4



#34
 Trichloroethene
 Concen: 0.972 ug/L
 RT: 5.96 min Scan# 1578
 Delta R.T. 0.00 min
 Lab File: VV007058.D
 Acq: 17 Aug 2018 16:49

Tgt Ion	Resp	Lower	Upper
95	100		
97	60.2	44.8	83.2
132	101.5	65.5	121.6
130	101.2	66.4	123.4

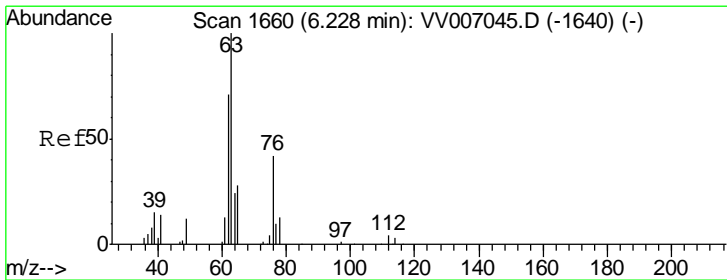
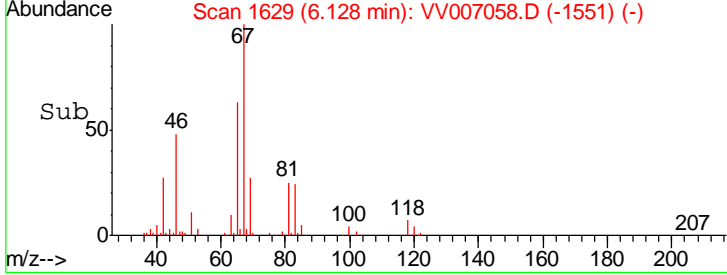
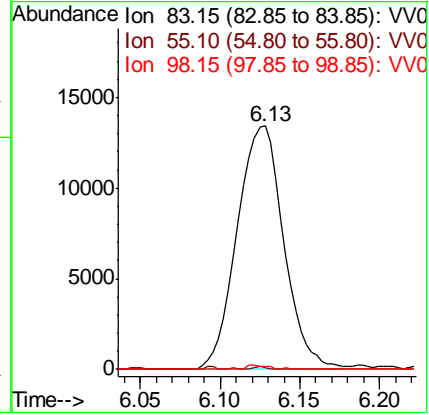
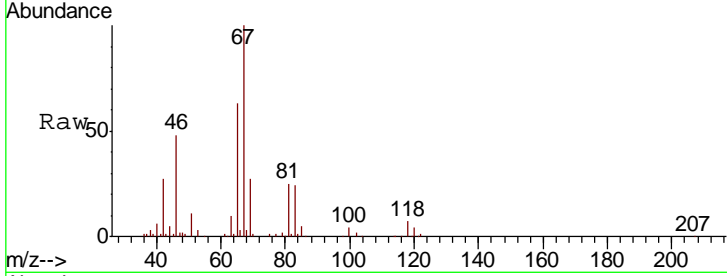




#35
 Methylcyclohexane
 Concen: 0.914 ug/L
 RT: 6.13 min Scan# 1629
 Delta R.T. -0.05 min
 Lab File: VV007058.D
 Acq: 17 Aug 2018 16:49

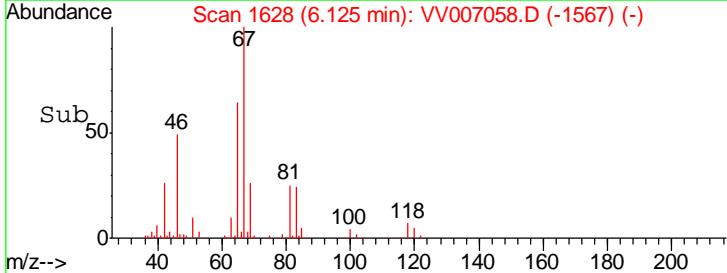
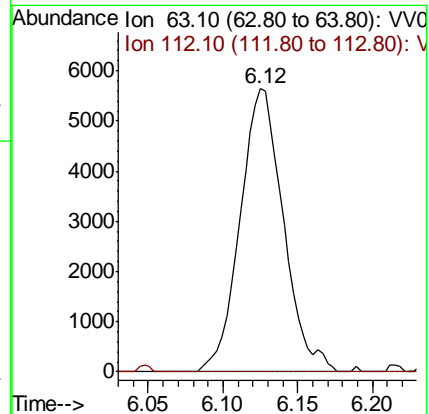
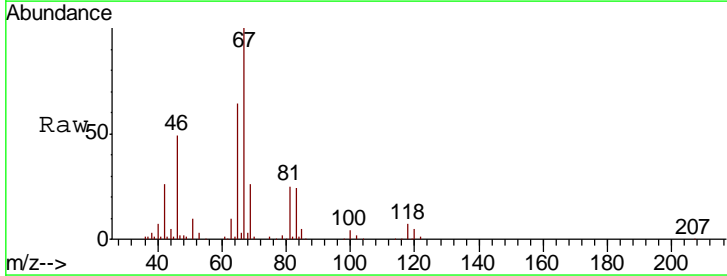
Instrument :
 MSVOA_V
 ClientSampled :

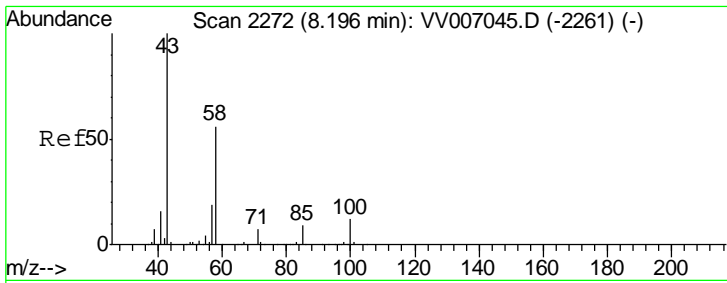
Tgt Ion	Resp	Lower	Upper
83	100		
55	0.3	68.1	102.1#
98	0.6	37.9	56.9#



#37
 1,2-Dichloropropane
 Concen: 0.548 ug/L
 RT: 6.12 min Scan# 1628
 Delta R.T. -0.10 min
 Lab File: VV007058.D
 Acq: 17 Aug 2018 16:49

Tgt Ion	Resp	Lower	Upper
63	100		
112	0.6	3.5	5.3#



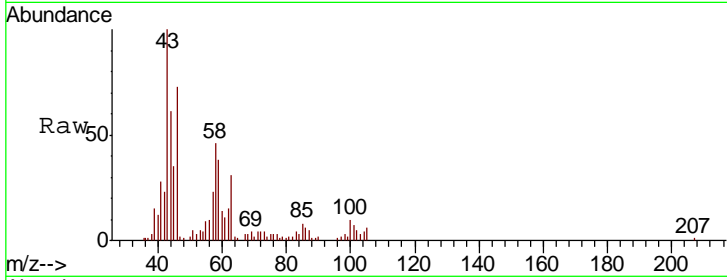


#48
 2-Hexanone
 Concen: 3.370 ug/L
 RT: 8.20 min Scan# 2272
 Delta R.T. -0.00 min
 Lab File: VV007058.D
 Acq: 17 Aug 2018 16:49

Instrument :
 MSVOA_V
 ClientSampled :

Tot Ion: 43 Resp: 26631

Ion	Ratio	Lower	Upper
43	100		
58	44.1	44.2	66.2#
57	19.8	14.8	22.2
100	9.6	8.8	13.2



Abundance Ion 43.05 (42.75 to 43.75): VV0
 Ion 58.05 (57.75 to 58.75): VV0
 Ion 57.20 (56.90 to 57.90): VV0
 Ion 100.15 (99.85 to 100.85): VV0

