

Data Path : Z:\VOASRV\HPCHEM1\MSVOA V\DATA\VV081720\
 Data File : VV018021.D
 Acq On : 17 Aug 2020 13:15
 Operator : SY/MD
 Sample : L3702-01
 Misc : 5.0mL/MSVOA V/WATER
 ALS Vial : 10 Sample Multiplier: 1

Instrument :
 MSVOA_V
 ClientSampled :
 BFSH7

Quant Time: Aug 18 01:26:18 2020
 Quant Method : Z:\VOASRV\HPCHEM1\MSVOA_V\METHOD\SOMVLM081120WMA.M
 Quant Title : VOC Analysis
 QLast Update : Tue Aug 18 01:23:44 2020
 Response via : Initial Calibration

Internal Standards	R.T.	QIon	Response	Conc	Units	Dev(Min)
1) 1,4-Difluorobenzene	5.64	114	242111	50.00	ug/L	0.00
28) Chlorobenzene-d5	8.87	117	240148	50.00	ug/L	0.00
60) 1,4-Dichlorobenzene-d4	11.27	152	116721	50.00	ug/L	0.00

System Monitoring Compounds

4) Vinyl Chloride-d3	1.32	65	89547	48.48	ug/L	0.00
Spiked Amount	50.000	Range	60 - 135	Recovery	=	96.96%
7) Chloroethane-d5	1.58	69	77337	51.17	ug/L	0.00
Spiked Amount	50.000	Range	70 - 130	Recovery	=	102.34%
11) 1,1-Dichloroethene-d2	2.12	63	134280	38.00	ug/L	0.00
Spiked Amount	50.000	Range	60 - 125	Recovery	=	76.00%
21) 2-Butanone-d5	3.91	46	117660	97.25	ug/L	0.00
Spiked Amount	100.000	Range	40 - 130	Recovery	=	97.25%
24) Chloroform-d	4.38	84	164393	48.89	ug/L	0.00
Spiked Amount	50.000	Range	70 - 125	Recovery	=	97.78%
26) 1,2-Dichloroethane-d4	5.06	65	114519	52.43	ug/L	0.00
Spiked Amount	50.000	Range	70 - 125	Recovery	=	104.86%
32) Benzene-d6	5.08	84	334898	50.60	ug/L	0.00
Spiked Amount	50.000	Range	70 - 125	Recovery	=	101.20%
36) 1,2-Dichloropropane-d6	6.09	67	108396	50.10	ug/L	0.00
Spiked Amount	50.000	Range	70 - 120	Recovery	=	100.20%
41) Toluene-d8	7.34	98	293377	49.29	ug/L	0.00
Spiked Amount	50.000	Range	80 - 120	Recovery	=	98.58%
43) trans-1,3-Dichloropropene-	7.64	79	48780	49.71	ug/L	0.00
Spiked Amount	50.000	Range	60 - 125	Recovery	=	99.42%
47) 2-Hexanone-d5	8.11	63	59131	85.16	ug/L	0.00
Spiked Amount	100.000	Range	45 - 130	Recovery	=	85.16%
57) 1,1,2,2-Tetrachloroethane-	10.24	84	133763	47.47	ug/L	0.00
Spiked Amount	50.000	Range	65 - 120	Recovery	=	94.94%
64) 1,2-Dichlorobenzene-d4	11.65	152	124410	54.16	ug/L	0.00
Spiked Amount	50.000	Range	80 - 120	Recovery	=	108.32%

Target Compounds

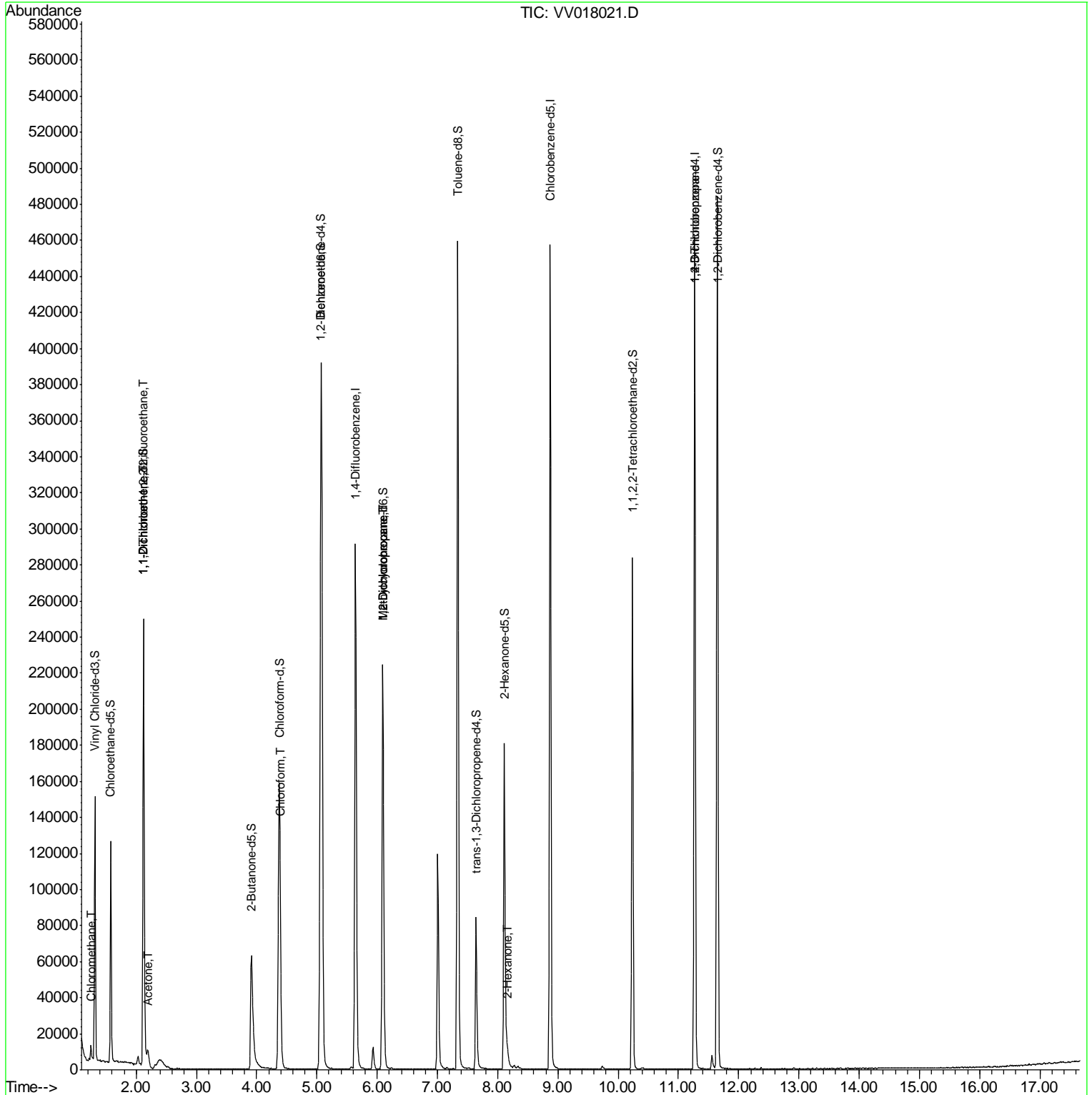
Target Compounds	R.T.	QIon	Response	Conc	Units	Ovalue
3) Chloromethane	1.25	50	4232	1.949	ug/L	89
10) 1,1,2-Trichloro-1,2,2-trif	2.12	101	1310	0.763	ug/L #	20
12) 1,1-Dichloroethene	2.12	96	1136	0.699	ug/L #	1
13) Acetone	2.19	43	13007	10.408	ug/L	95
25) Chloroform	4.40	83	5476	1.599	ug/L	88
35) Methylcyclohexane	6.09	83	26129	8.947	ug/L #	17
37) 1,2-Dichloropropane	6.09	63	11909	5.878	ug/L #	87
48) 2-Hexanone	8.16	43	5222	2.445	ug/L #	72
59) 1,2,3-Trichloropropane	11.27	75	13915	5.561	ug/L	90

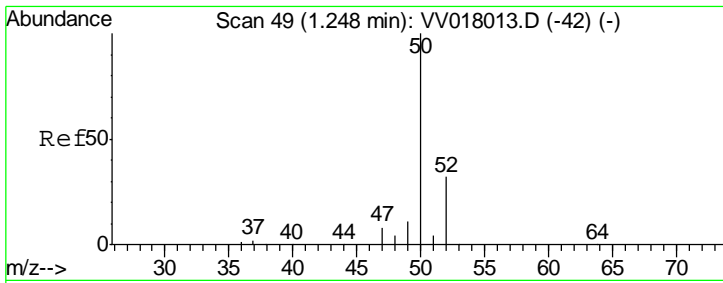
(#) = qualifier out of range (m) = manual integration (+) = signals summed

Data Path : Z:\VOASRV\HPCHEM1\MSVOA V\DATA\VV081720\
Data File : VV018021.D
Acq On : 17 Aug 2020 13:15
Operator : SY/MD
Sample : L3702-01
Misc : 5.0mL/MSVOA V/WATER
ALS Vial : 10 Sample Multiplier: 1

Instrument :
MSVOA_V
ClientSampled :
BFSH7

Quant Time: Aug 18 01:26:18 2020
Quant Method : Z:\VOASRV\HPCHEM1\MSVOA_V\METHOD\SOMVLM081120WMA.M
Quant Title : VOC Analysis
QLast Update : Tue Aug 18 01:23:44 2020
Response via : Initial Calibration

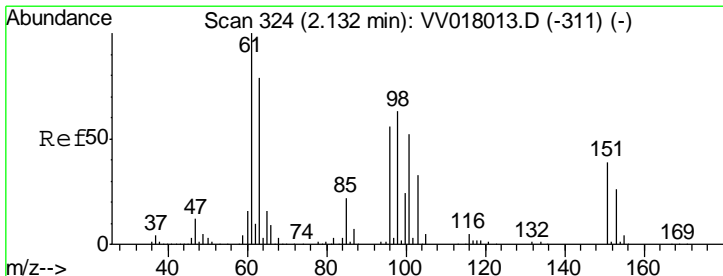
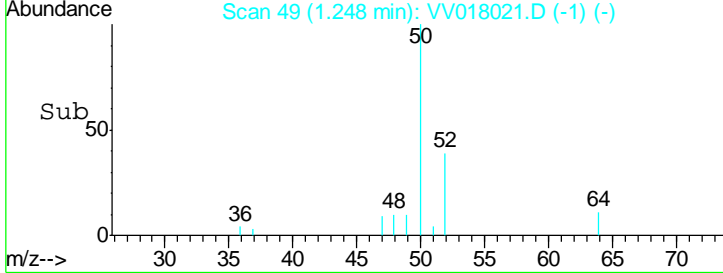
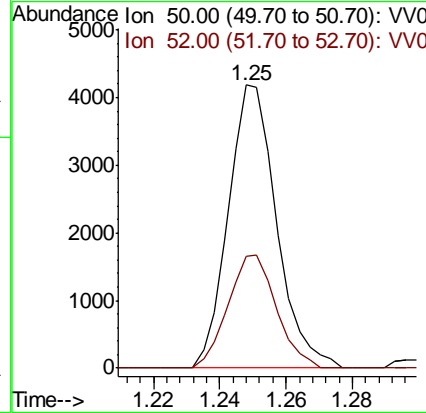
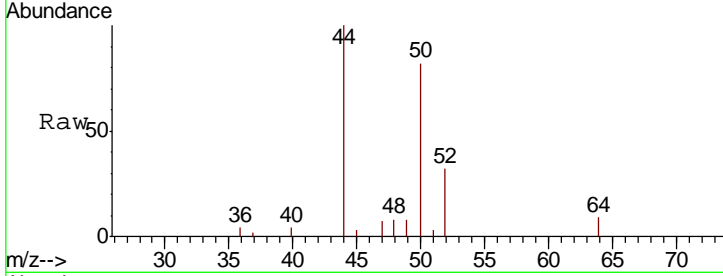




#3
 Chloromethane
 Concen: 1.949 ug/L
 RT: 1.25 min Scan# 49
 Delta R.T. 0.00 min
 Lab File: VV018021.D
 Acq: 17 Aug 2020 13:15

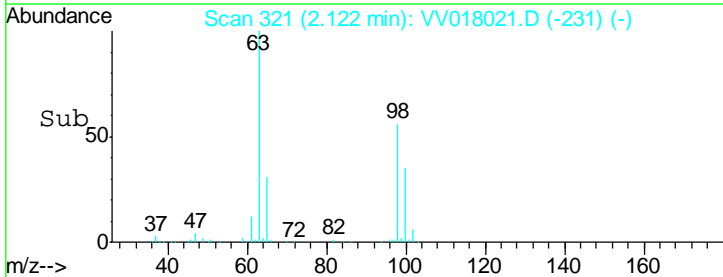
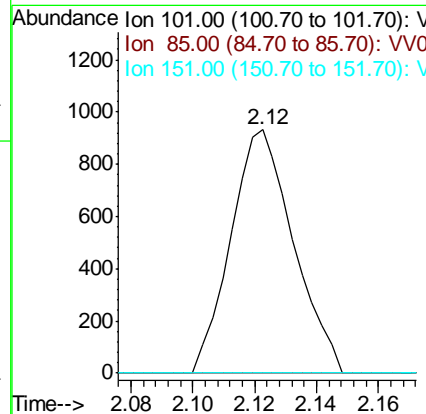
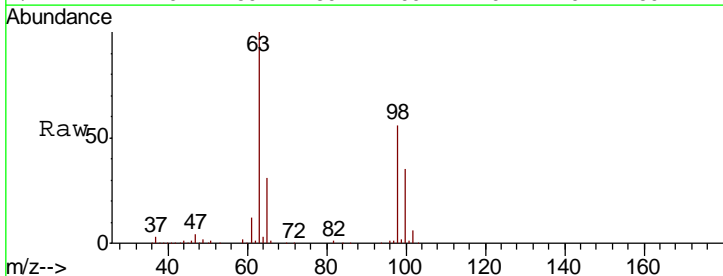
Instrument : MSVOA_V
 ClientSampled : BFSH7

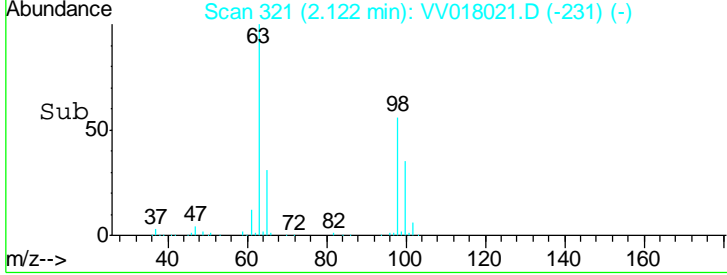
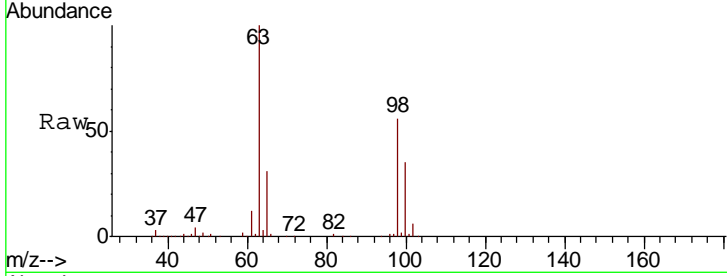
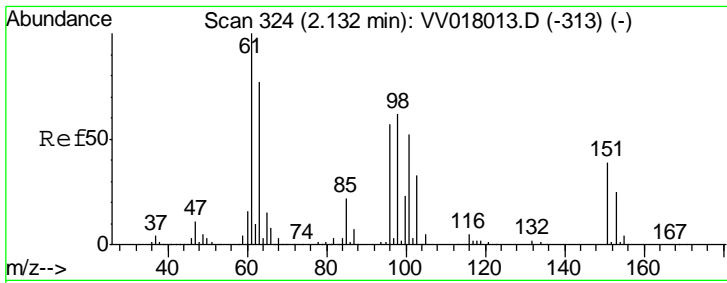
Tgt Ion	Resp	Lower	Upper
50	4232		
52	39.4	23.2	43.2



#10
 1,1,2-Trichloro-1,2,2-trifluoroethane
 Concen: 0.763 ug/L
 RT: 2.12 min Scan# 321
 Delta R.T. -0.01 min
 Lab File: VV018021.D
 Acq: 17 Aug 2020 13:15

Tgt Ion	Resp	Lower	Upper
101	1310		
85	0.0	34.9	52.3#
151	0.0	59.1	88.7#

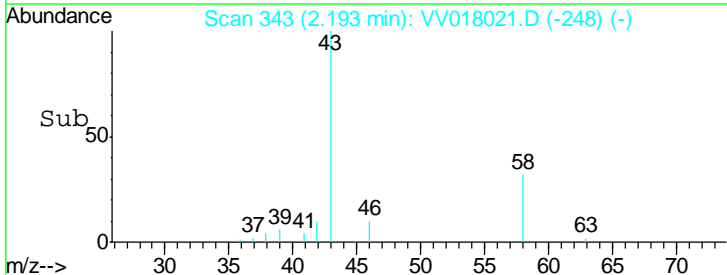
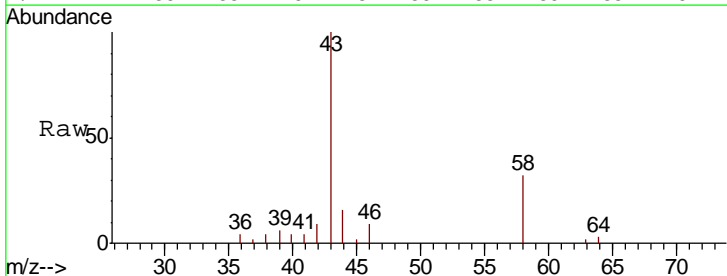
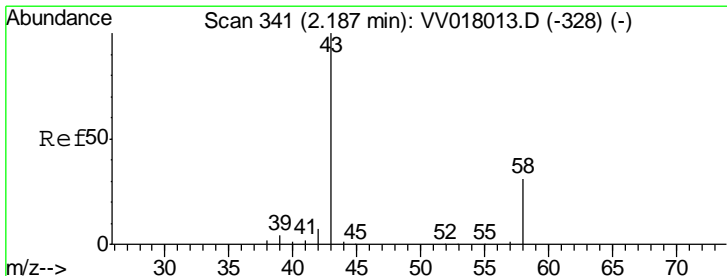
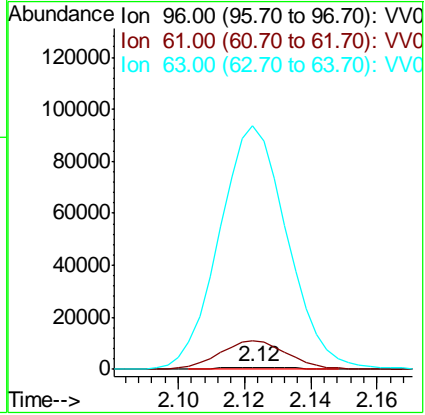




#12
 1,1-Dichloroethene
 Concen: 0.699 ug/L
 RT: 2.12 min Scan# 321
 Delta R.T. -0.01 min
 Lab File: VV018021.D
 Acq: 17 Aug 2020 13:15

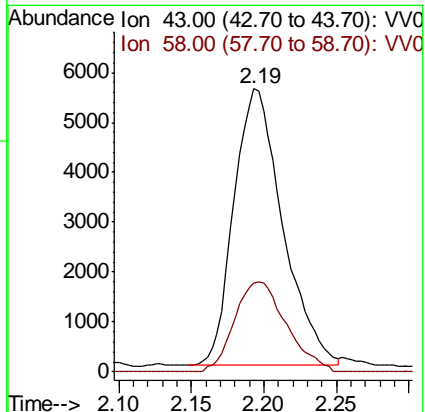
Instrument :
 MSVOA_V
 ClientSampled :
 BFSH7

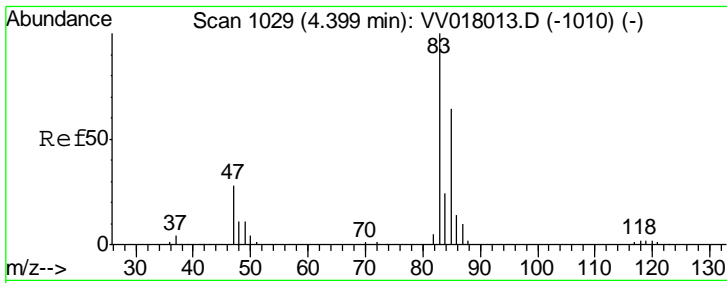
Tgt Ion	Resp	Lower	Upper
96	100		
61	1425.5	127.1	236.0#
63	12050.5	95.2	176.8#



#13
 Acetone
 Concen: 10.408 ug/L
 RT: 2.19 min Scan# 343
 Delta R.T. 0.01 min
 Lab File: VV018021.D
 Acq: 17 Aug 2020 13:15

Tgt Ion	Resp	Lower	Upper
43	100		
58	34.5	0.0	63.6

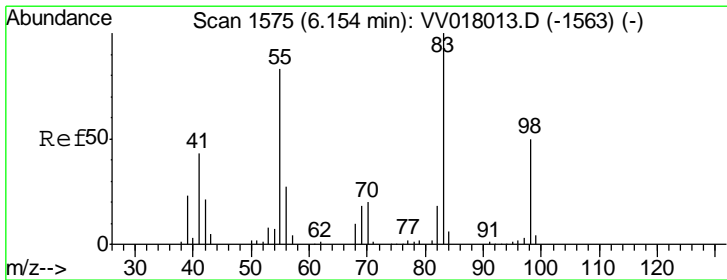
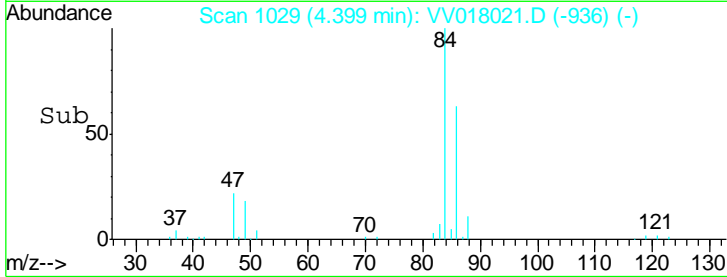
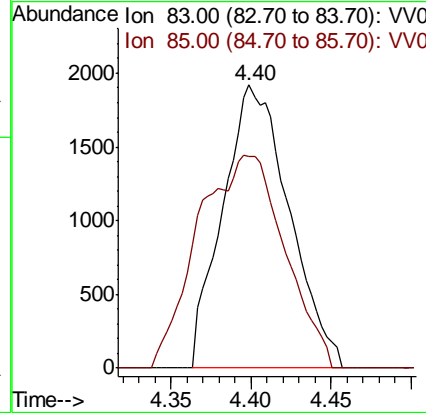
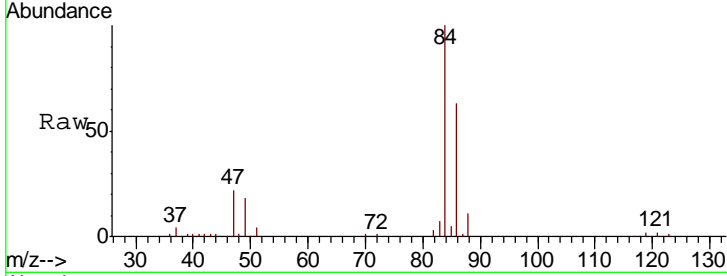




#25
 Chloroform
 Concen: 1.599 ug/L
 RT: 4.40 min Scan# 1029
 Delta R.T. 0.00 min
 Lab File: VV018021.D
 Acq: 17 Aug 2020 13:15

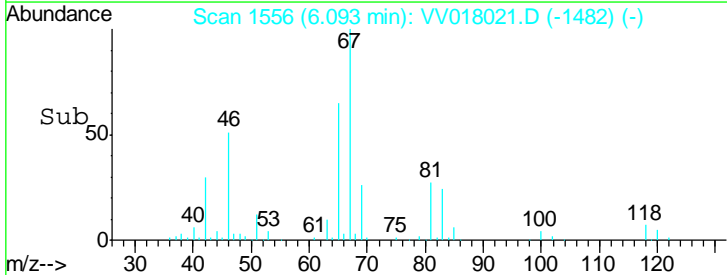
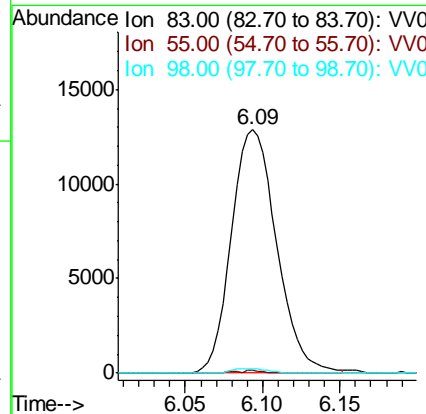
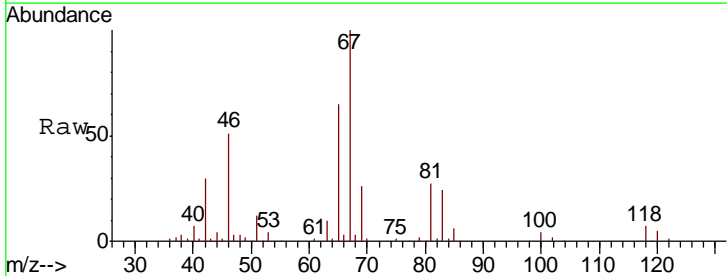
Instrument : MSVOA_V
 ClientSampled : BFSH7

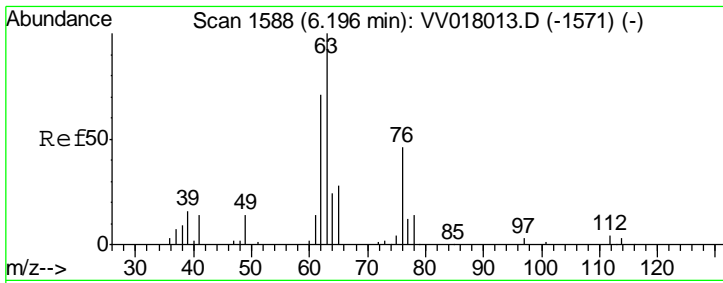
Tgt Ion	Resp	Lower	Upper
83	100		
85	74.8	45.5	84.5



#35
 Methylcyclohexane
 Concen: 8.947 ug/L
 RT: 6.09 min Scan# 1556
 Delta R.T. -0.06 min
 Lab File: VV018021.D
 Acq: 17 Aug 2020 13:15

Tgt Ion	Resp	Lower	Upper
83	100		
55	0.3	64.9	97.3#
98	1.5	38.7	58.1#

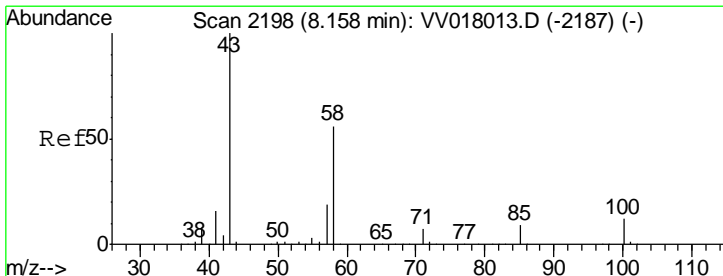
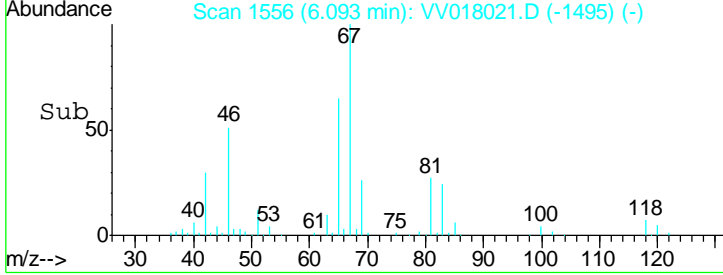
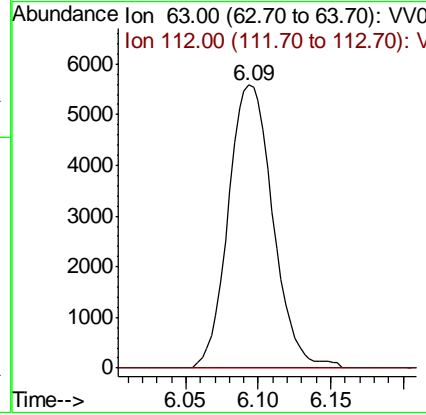
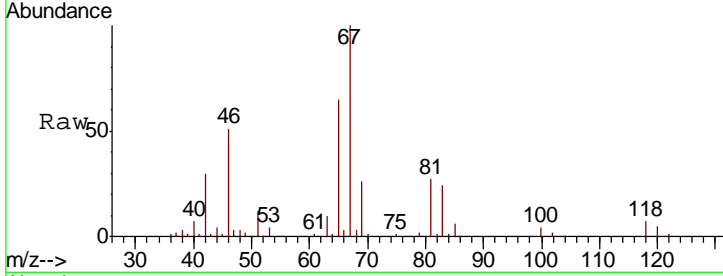




#37
 1,2-Dichloropropane
 Concen: 5.878 ug/L
 RT: 6.09 min Scan# 1556
 Delta R.T. -0.10 min
 Lab File: VV018021.D
 Acq: 17 Aug 2020 13:15

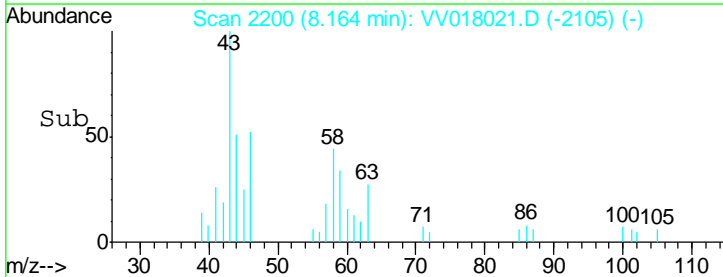
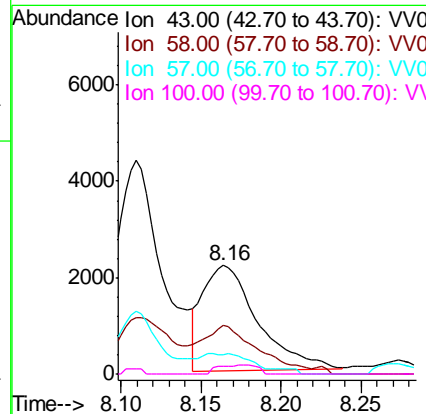
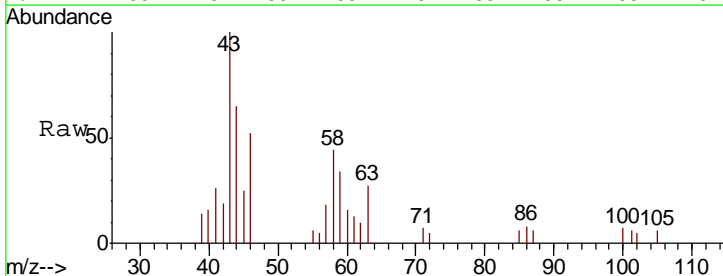
Instrument :
 MSVOA_V
 ClientSampled :
 BFSH7

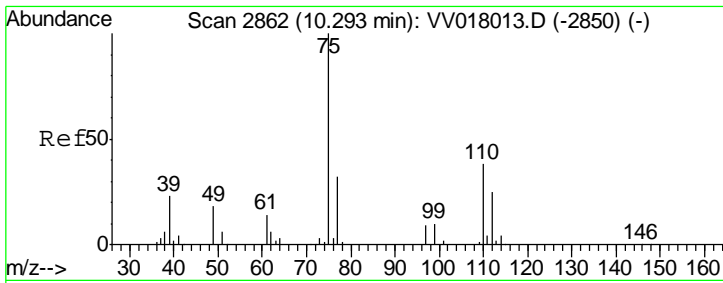
Tgt Ion	Resp	Lower	Upper
63	11909		
112	0.0	3.5	5.3#



#48
 2-Hexanone
 Concen: 2.445 ug/L
 RT: 8.16 min Scan# 2200
 Delta R.T. 0.01 min
 Lab File: VV018021.D
 Acq: 17 Aug 2020 13:15

Tgt Ion	Resp	Lower	Upper
43	5222		
58	37.9	44.4	66.6#
57	1.1	15.2	22.8#
100	2.1	9.8	14.6#





#59
 1,2,3-Trichloropropane
 Concen: 5.561 ug/L
 RT: 11.27 min Scan# 3166
 Delta R.T. 0.98 min
 Lab File: VV018021.D
 Acq: 17 Aug 2020 13:15

Instrument :
 MSVOA_V
 ClientSampled :
 BFSH7

Tot Ion: 75 Resp: 13915
 Ion Ratio Lower Upper
 75 100
 77 37.4 25.7 38.5

