

Data Path : Z:\VOASRV\HPCHEM1\MSVOA V\DATA\VV081720\
 Data File : VV018039.D
 Acq On : 17 Aug 2020 20:41
 Operator : SY/MD
 Sample : VSTDCCC050EC
 Misc : 5.0mL/MSVOA V/WATER
 ALS Vial : 29 Sample Multiplier: 1

Instrument :
 MSVOA_V
 ClientSampleId :
 VSTD05072

Quant Time: Aug 18 01:29:37 2020
 Quant Method : Z:\VOASRV\HPCHEM1\MSVOA_V\METHOD\SOMVLM081120WMA.M
 Quant Title : VOC Analysis
 QLast Update : Tue Aug 18 01:23:44 2020
 Response via : Initial Calibration

Internal Standards	R.T.	QIon	Response	Conc	Units	Dev(Min)
1) 1,4-Difluorobenzene	5.64	114	278737	50.00	ug/L	0.00
28) Chlorobenzene-d5	8.87	117	277649	50.00	ug/L	0.00
60) 1,4-Dichlorobenzene-d4	11.27	152	149668	50.00	ug/L	0.00

System Monitoring Compounds

4) Vinyl Chloride-d3	1.32	65	91517	43.03	ug/L	0.00
Spiked Amount	50.000	Range	60 - 135	Recovery	=	86.06%
7) Chloroethane-d5	1.58	69	79205	45.52	ug/L	0.00
Spiked Amount	50.000	Range	70 - 130	Recovery	=	91.04%
11) 1,1-Dichloroethene-d2	2.12	63	187375	46.06	ug/L	0.00
Spiked Amount	50.000	Range	60 - 125	Recovery	=	92.12%
21) 2-Butanone-d5	3.91	46	133425	95.79	ug/L	0.00
Spiked Amount	100.000	Range	40 - 130	Recovery	=	95.79%
24) Chloroform-d	4.38	84	182341	47.10	ug/L	0.00
Spiked Amount	50.000	Range	70 - 125	Recovery	=	94.20%
26) 1,2-Dichloroethane-d4	5.06	65	117691	46.80	ug/L	0.00
Spiked Amount	50.000	Range	70 - 125	Recovery	=	93.60%
32) Benzene-d6	5.07	84	347039	45.35	ug/L	0.00
Spiked Amount	50.000	Range	70 - 125	Recovery	=	90.70%
36) 1,2-Dichloropropane-d6	6.09	67	112951	45.15	ug/L	0.00
Spiked Amount	50.000	Range	70 - 120	Recovery	=	90.30%
41) Toluene-d8	7.34	98	321843	46.77	ug/L	0.00
Spiked Amount	50.000	Range	80 - 120	Recovery	=	93.54%
43) trans-1,3-Dichloropropene-	7.64	79	55067	48.53	ug/L	0.00
Spiked Amount	50.000	Range	60 - 125	Recovery	=	97.06%
47) 2-Hexanone-d5	8.11	63	76826	95.70	ug/L	0.00
Spiked Amount	100.000	Range	45 - 130	Recovery	=	95.70%
57) 1,1,2,2-Tetrachloroethane-	10.24	84	149992	46.04	ug/L	0.00
Spiked Amount	50.000	Range	65 - 120	Recovery	=	92.08%
64) 1,2-Dichlorobenzene-d4	11.65	152	133822	45.43	ug/L	0.00
Spiked Amount	50.000	Range	80 - 120	Recovery	=	90.86%

Target Compounds

Target Compounds	R.T.	QIon	Response	Conc	Units	Ovalue
2) Dichlorodifluoromethane	1.14	85	95821	44.528	ug/L	99
3) Chloromethane	1.25	50	111792	44.721	ug/L	98
5) Vinyl chloride	1.32	62	113837	45.962	ug/L	97
6) Bromomethane	1.53	94	63649	42.998	ug/L	97
8) Chloroethane	1.60	64	74498	47.126	ug/L	100
9) Trichlorofluoromethane	1.77	101	161819	45.738	ug/L	100
10) 1,1,2-Trichloro-1,2,2-trif	2.13	101	91075	46.104	ug/L	99
12) 1,1-Dichloroethene	2.13	96	88413	47.286	ug/L	98
13) Acetone	2.19	43	107547	74.752	ug/L	98
14) Carbon disulfide	2.31	76	248641	48.316	ug/L	100
15) Methyl Acetate	2.45	43	113707	48.974	ug/L	100
16) Methylene chloride	2.52	84	107522	45.139	ug/L	99
17) trans-1,2-Dichloroethene	2.78	96	92073	47.905	ug/L	99
18) Methyl tert-butyl Ether	2.78	73	307170	48.325	ug/L	100
19) 1,1-Dichloroethane	3.21	63	185808	48.079	ug/L	100
20) cis-1,2-Dichloroethene	3.94	96	103381	48.947	ug/L	100
22) 2-Butanone	3.99	43	154076	95.461	ug/L	98

Data Path : Z:\VOASRV\HPCHEM1\MSVOA V\DATA\VV081720\
 Data File : VV018039.D
 Acq On : 17 Aug 2020 20:41
 Operator : SY/MD
 Sample : VSTDCCC050EC
 Misc : 5.0mL/MSVOA V/WATER
 ALS Vial : 29 Sample Multiplier: 1

Instrument :
 MSVOA_V
 ClientSampleId :
 VSTD05072

Quant Time: Aug 18 01:29:37 2020
 Quant Method : Z:\VOASRV\HPCHEM1\MSVOA_V\METHOD\SOMVLM081120WMA.M
 Quant Title : VOC Analysis
 QLast Update : Tue Aug 18 01:23:44 2020
 Response via : Initial Calibration

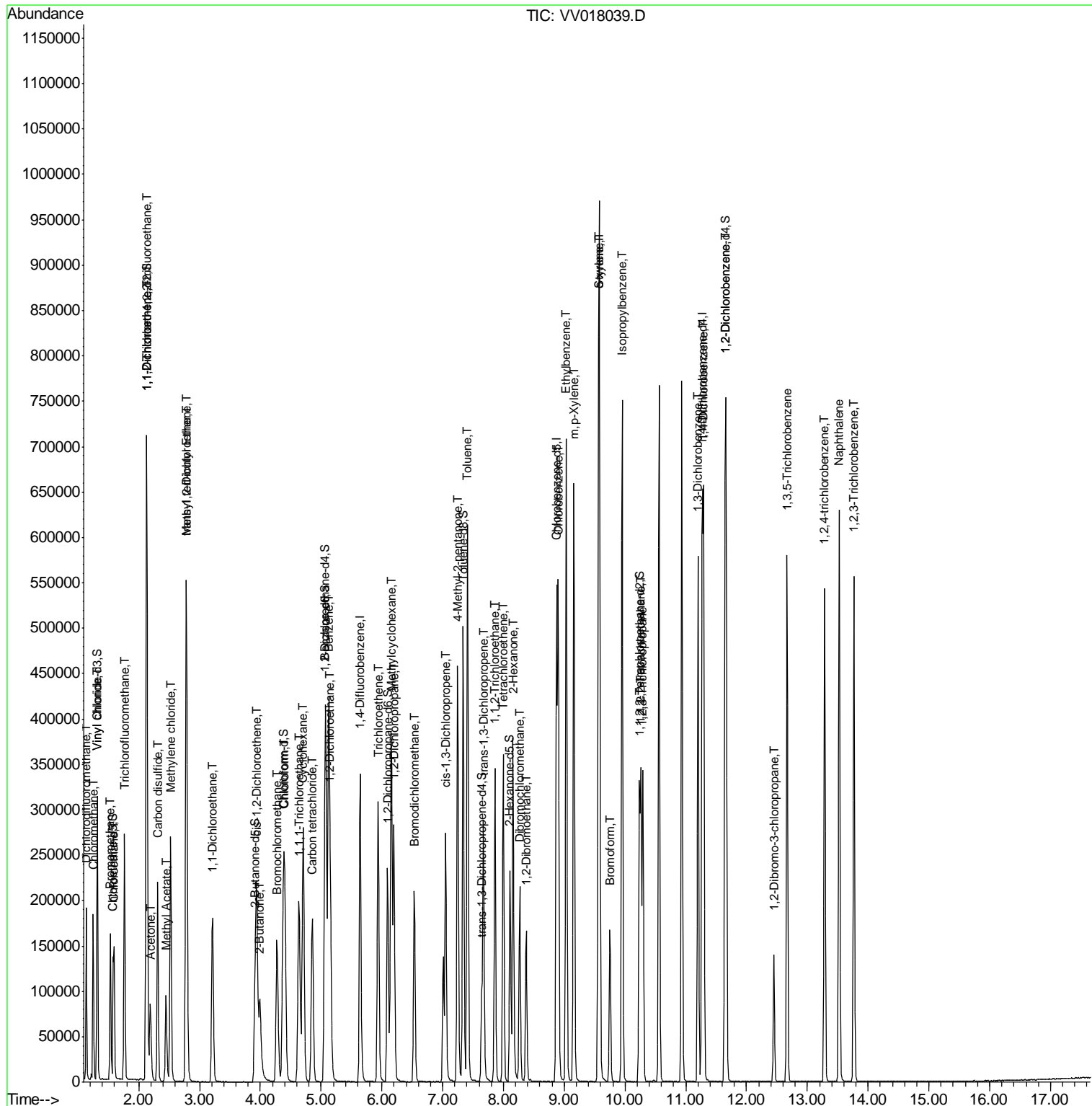
Internal Standards	R.T.	QIon	Response	Conc	Units	Dev(Min)
23) Bromochloromethane	4.28	128	54709	49.584	ug/L	95
25) Chloroform	4.40	83	190884	48.425	ug/L	99
27) 1,2-Dichloroethane	5.15	62	151324	48.231	ug/L	99
29) Cyclohexane	4.70	56	154081	45.980	ug/L	100
30) 1,1,1-Trichloroethane	4.63	97	161742	47.537	ug/L	100
31) Carbon tetrachloride	4.86	117	135524	47.847	ug/L	100
33) Benzene	5.13	78	405905	47.253	ug/L	100
34) Trichloroethene	5.94	95	106438	46.877	ug/L	98
35) Methylcyclohexane	6.15	83	152488	45.164	ug/L	100
37) 1,2-Dichloropropane	6.20	63	111601	47.640	ug/L	100
38) Bromodichloromethane	6.53	83	140828	48.398	ug/L	100
39) cis-1,3-Dichloropropene	7.05	75	162431	48.911	ug/L	100
40) 4-Methyl-2-pentanone	7.24	43	299645	97.847	ug/L	99
42) Toluene	7.41	91	430598	48.039	ug/L	99
44) trans-1,3-Dichloropropene	7.67	75	158440	50.284	ug/L	99
45) 1,1,2-Trichloroethane	7.86	97	102156	47.089	ug/L	100
46) Tetrachloroethene	8.00	164	80456	48.315	ug/L	98
48) 2-Hexanone	8.16	43	233456	94.537	ug/L	100
49) Dibromochloromethane	8.27	129	106853	50.461	ug/L	100
50) 1,2-Dibromoethane	8.37	107	107416	47.856	ug/L	98
51) Chlorobenzene	8.90	112	277073	48.062	ug/L	98
52) Ethylbenzene	9.03	91	473082	48.405	ug/L	100
53) m,p-Xylene	9.16	106	175886	48.930	ug/L	100
54) o-xylene	9.57	106	171561	48.296	ug/L	99
55) Styrene	9.58	104	308981	50.791	ug/L	97
56) Isopropylbenzene	9.95	105	460914	49.183	ug/L	100
58) 1,1,2,2-Tetrachloroethane	10.26	83	157678	46.675	ug/L	100
59) 1,2,3-Trichloropropane	10.29	75	135611	46.874	ug/L	100
61) Bromoform	9.75	173	74216	52.406	ug/L	99
62) 1,3-Dichlorobenzene	11.20	146	225166	47.310	ug/L	99
63) 1,4-Dichlorobenzene	11.29	146	232778	47.611	ug/L	99
65) 1,2-Dichlorobenzene	11.67	146	228459	46.637	ug/L	98
66) 1,2-Dibromo-3-chloropropan	12.45	75	34422	47.692	ug/L	98
67) 1,3,5-Trichlorobenzene	12.67	180	172698	47.767	ug/L	100
68) 1,2,4-trichlorobenzene	13.29	180	161461	50.795	ug/L	99
69) Naphthalene	13.52	128	459686	52.468	ug/L	100
70) 1,2,3-Trichlorobenzene	13.77	180	167420	51.792	ug/L	99

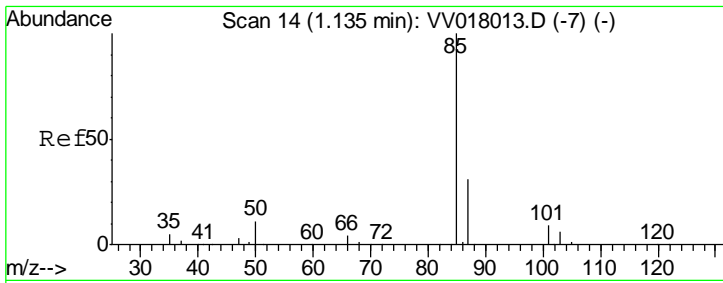
(#) = qualifier out of range (m) = manual integration (+) = signals summed

Data Path : Z:\VOASRV\HPCHEM1\MSVOA V\DATA\VV081720\
 Data File : VV018039.D
 Acq On : 17 Aug 2020 20:41
 Operator : SY/MD
 Sample : VSTDCCC050EC
 Misc : 5.0mL/MSVOA V/WATER
 ALS Vial : 29 Sample Multiplier: 1

Instrument :
 MSVOA_V
 Client Sampled :
 VSTD05072

Quant Time: Aug 18 01:29:37 2020
 Quant Method : Z:\VOASRV\HPCHEM1\MSVOA_V\METHOD\SOMVLM081120WMA.M
 Quant Title : VOC Analysis
 QLast Update : Tue Aug 18 01:23:44 2020
 Response via : Initial Calibration

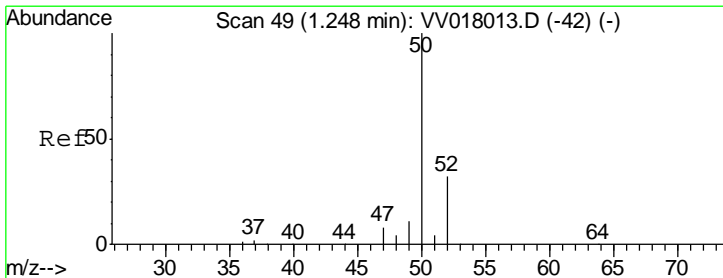
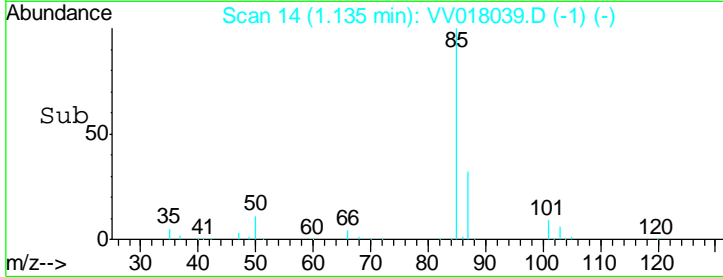
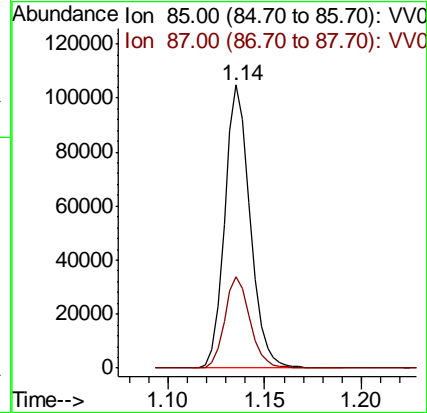
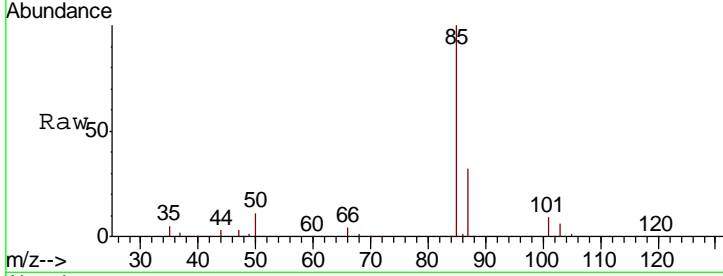




#2
 Dichlorodifluoromethane
 Concen: 44.528 ug/L
 RT: 1.14 min Scan# 14
 Delta R.T. -0.00 min
 Lab File: VV018039.D
 Acq: 17 Aug 2020 20:41

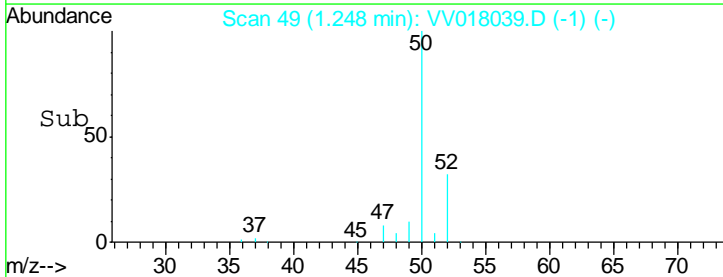
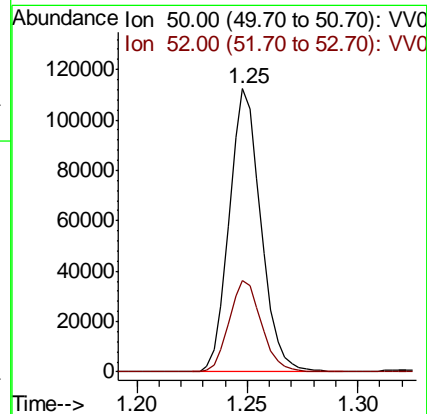
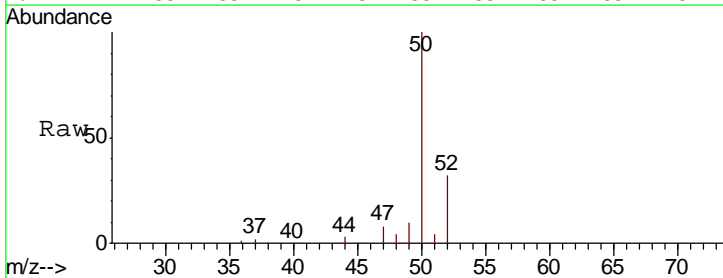
Instrument :
 MSVOA_V
ClientSampleId :
 VSTD05072

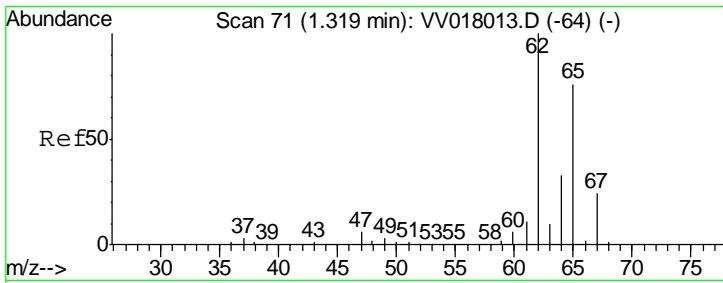
Tgt Ion: 85 Resp: 95821
 Ion Ratio Lower Upper
 85 100
 87 32.1 25.9 38.9



#3
 Chloromethane
 Concen: 44.721 ug/L
 RT: 1.25 min Scan# 49
 Delta R.T. -0.00 min
 Lab File: VV018039.D
 Acq: 17 Aug 2020 20:41

Tgt Ion: 50 Resp: 111792
 Ion Ratio Lower Upper
 50 100
 52 32.2 23.2 43.2

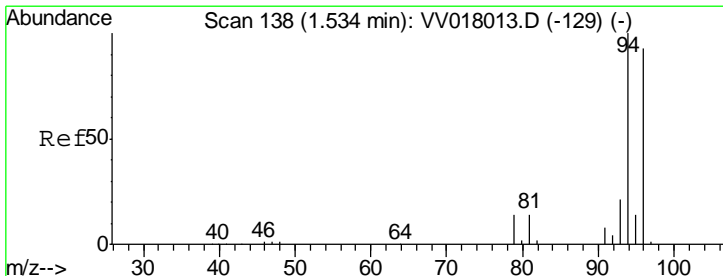
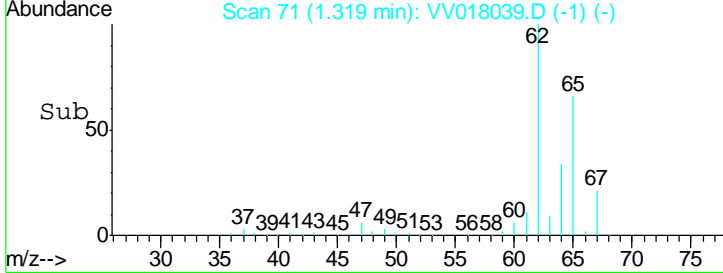
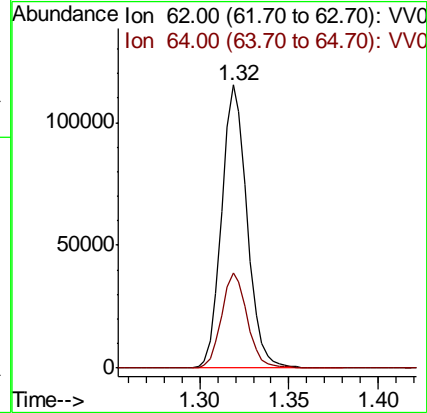
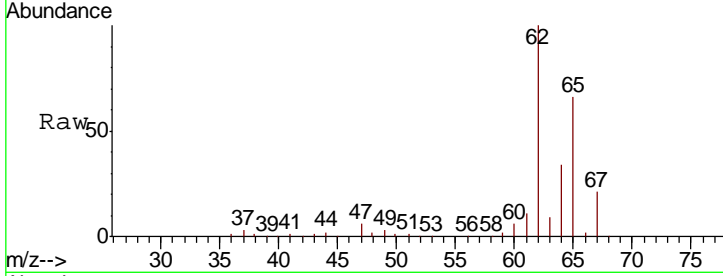




#5
 Vinyl chloride
 Concen: 45.962 ug/L
 RT: 1.32 min Scan# 71
 Delta R.T. -0.00 min
 Lab File: VV018039.D
 Acq: 17 Aug 2020 20:41

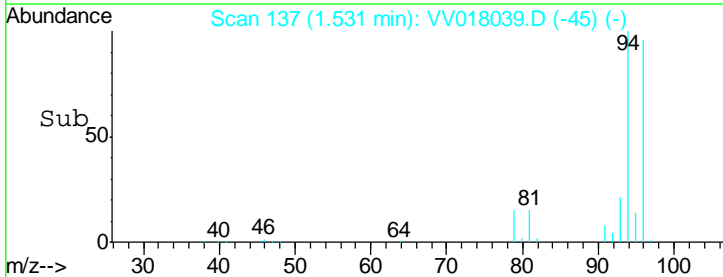
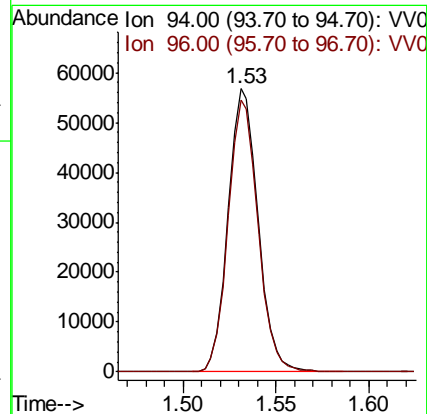
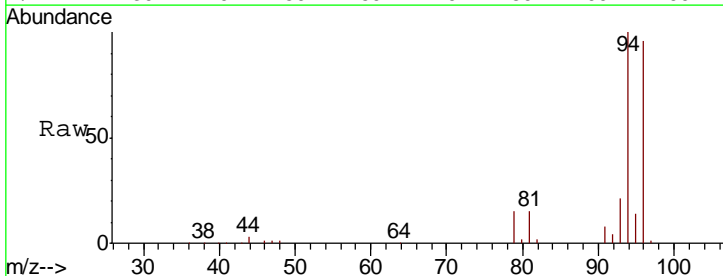
Instrument :
 MSVOA_V
ClientSampled :
 VSTD05072

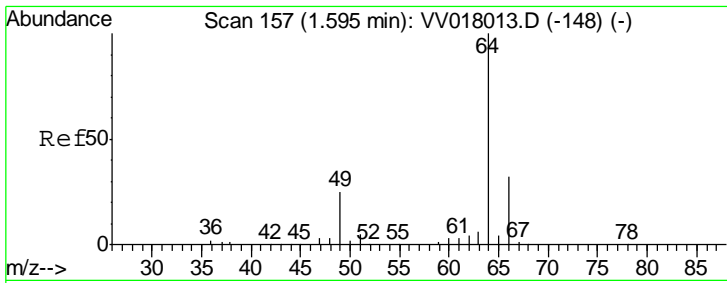
Tgt Ion	Resp	Lower	Upper
62	113837		
64	33.6	22.4	41.6



#6
 Bromomethane
 Concen: 42.998 ug/L
 RT: 1.53 min Scan# 137
 Delta R.T. -0.00 min
 Lab File: VV018039.D
 Acq: 17 Aug 2020 20:41

Tgt Ion	Resp	Lower	Upper
94	63649		
96	96.2	65.5	121.7



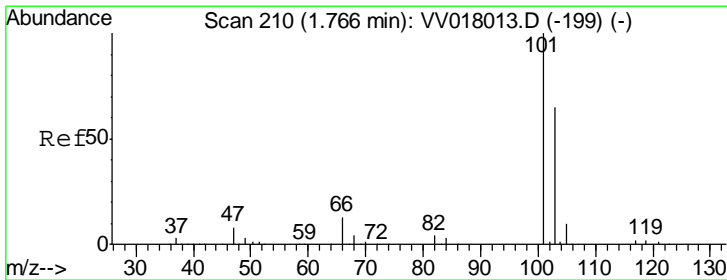
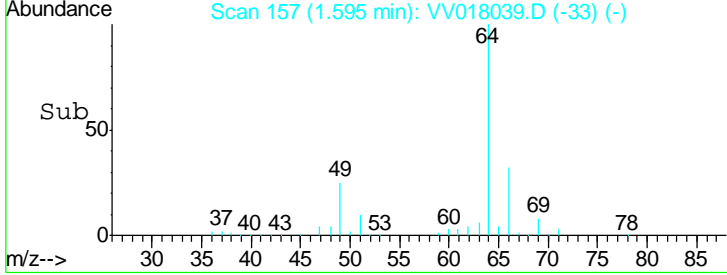
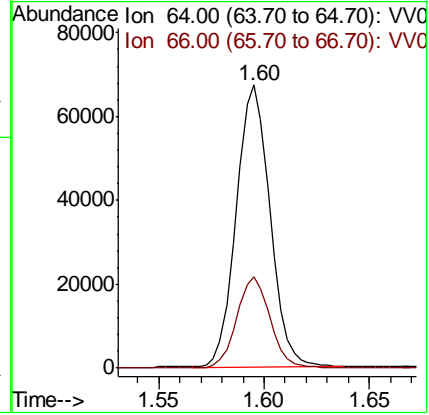
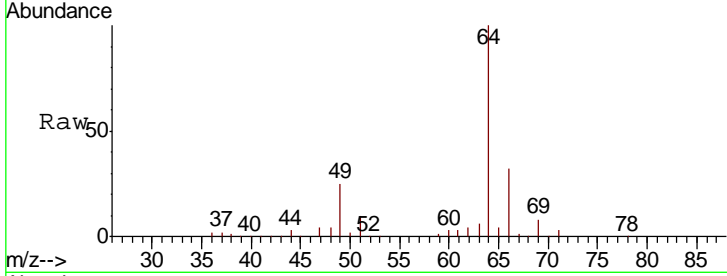


#8
 Chloroethane
 Concen: 47.126 ug/L
 RT: 1.60 min Scan# 157
 Delta R.T. -0.00 min
 Lab File: VV018039.D
 Acq: 17 Aug 2020 20:41

Instrument : MSVOA_V
 ClientSampled : VSTD05072

Tgt Ion: 64 Resp: 74498

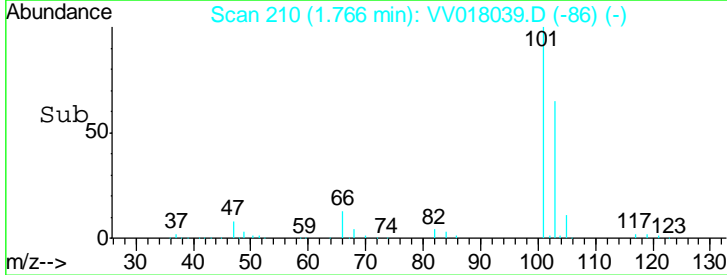
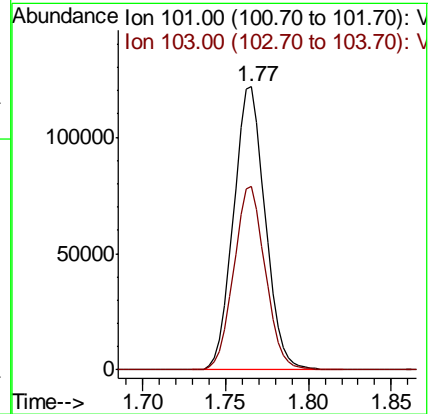
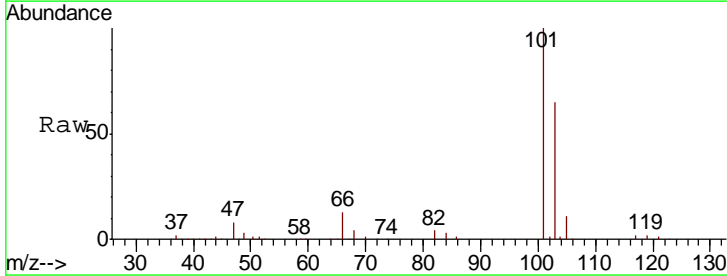
Ion	Ratio	Lower	Upper
64	100		
66	32.1	22.3	41.3

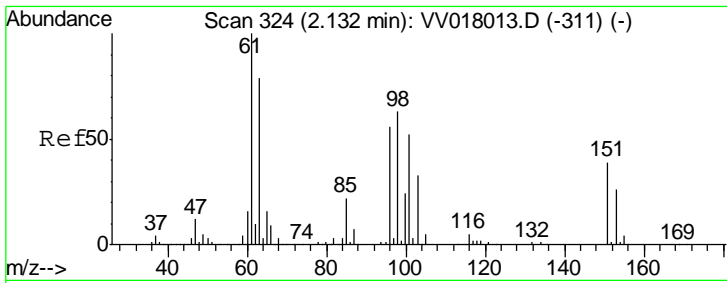


#9
 Trichlorofluoromethane
 Concen: 45.738 ug/L
 RT: 1.77 min Scan# 210
 Delta R.T. -0.00 min
 Lab File: VV018039.D
 Acq: 17 Aug 2020 20:41

Tgt Ion: 101 Resp: 161819

Ion	Ratio	Lower	Upper
101	100		
103	64.7	51.5	77.3





#10

1,1,2-Trichloro-1,2,2-trifluoroethane

Concen: 46.104 ug/L

RT: 2.13 min Scan# 324

Delta R.T. 0.00 min

Lab File: VV018039.D

Acq: 17 Aug 2020 20:41

Instrument :
MSVOA_V
ClientSampled :
VSTD05072

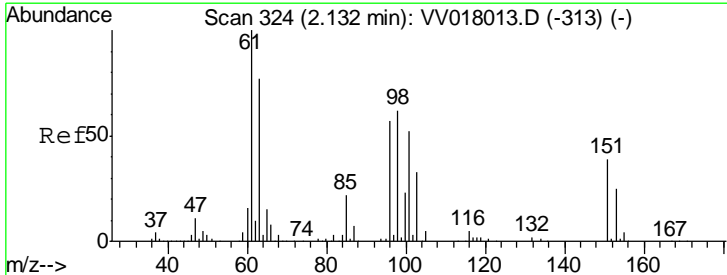
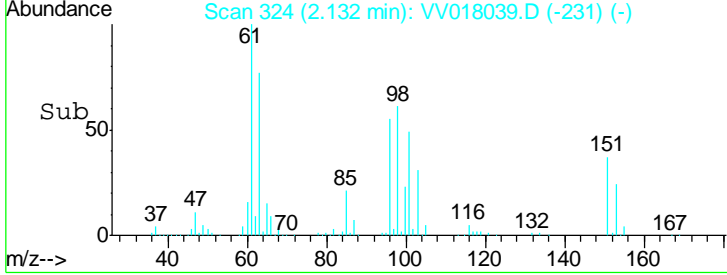
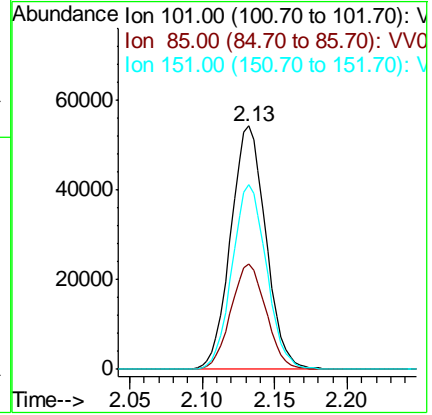
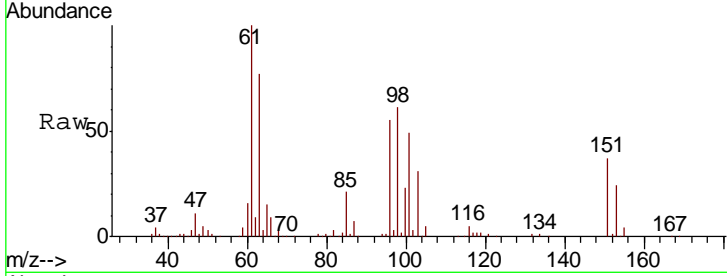
Tot Ion:101 Resp: 91075

Ion Ratio Lower Upper

101 100

85 43.2 34.9 52.3

151 74.7 59.1 88.7



#12

1,1-Dichloroethene

Concen: 47.286 ug/L

RT: 2.13 min Scan# 324

Delta R.T. 0.00 min

Lab File: VV018039.D

Acq: 17 Aug 2020 20:41

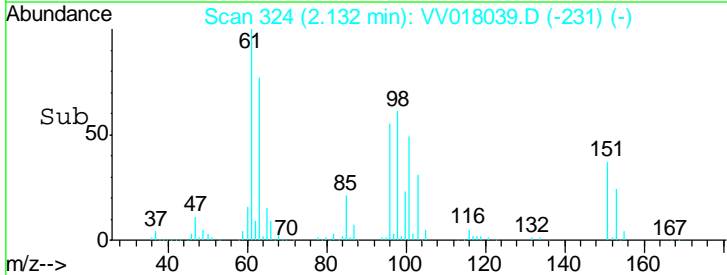
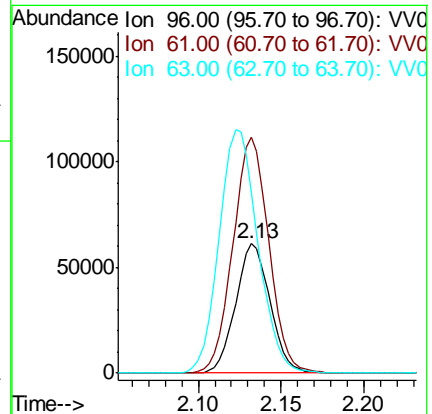
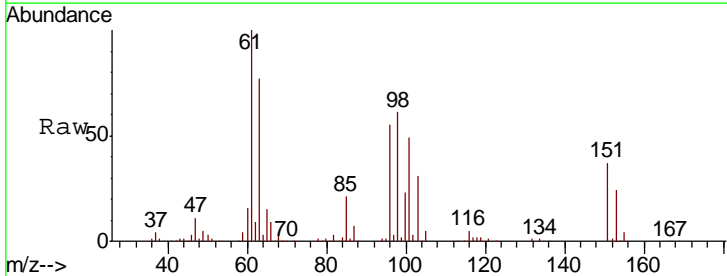
Tgt Ion: 96 Resp: 88413

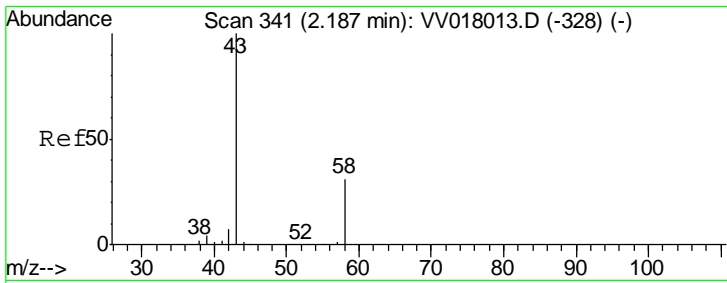
Ion Ratio Lower Upper

96 100

61 181.8 127.1 236.0

63 139.8 95.2 176.8

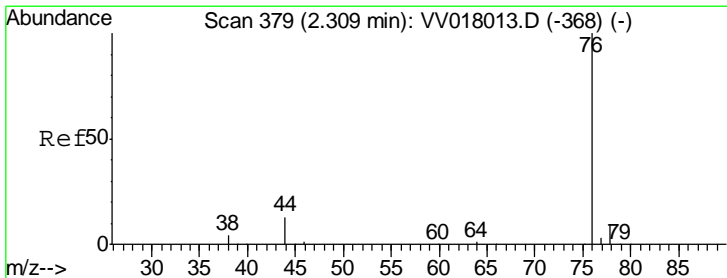
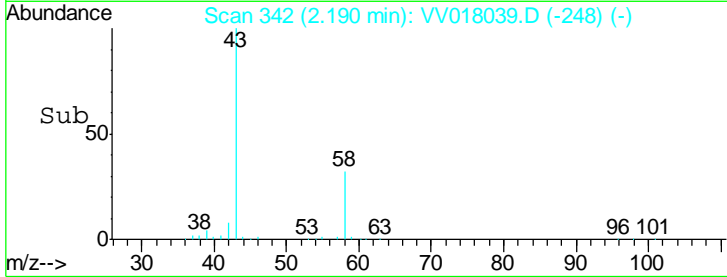
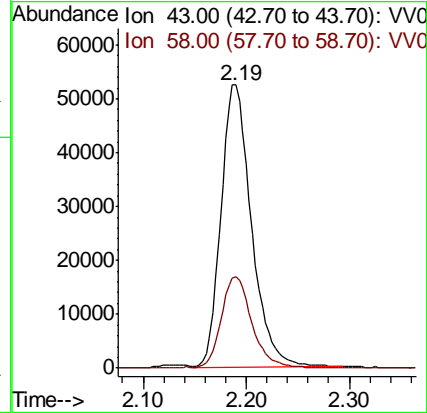
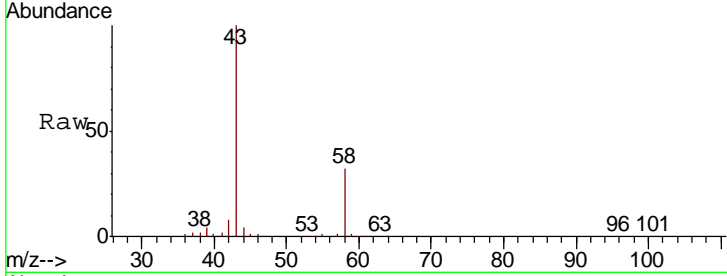




#13
 Acetone
 Concen: 74.752 ug/L
 RT: 2.19 min Scan# 342
 Delta R.T. 0.00 min
 Lab File: VV018039.D
 Acq: 17 Aug 2020 20:41

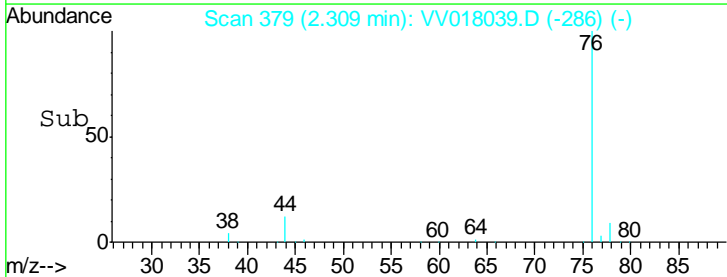
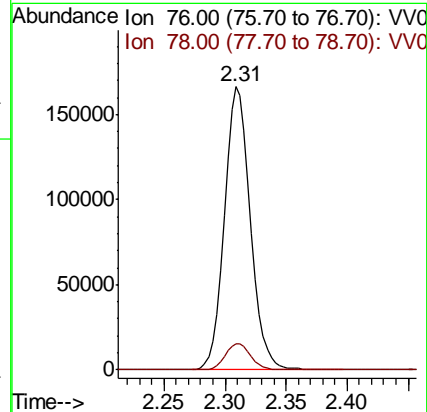
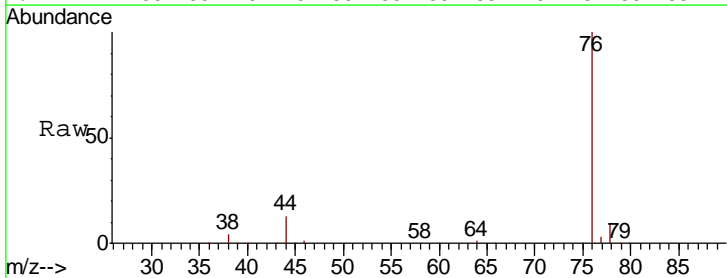
Instrument : MSVOA_V
 ClientSampleId : VSTD05072

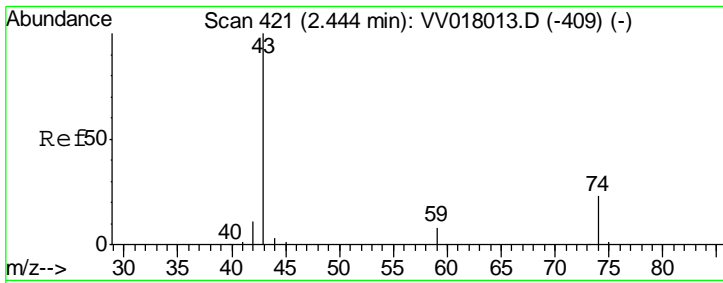
Tgt Ion	Resp	Lower	Upper
43	107547		
58	32.6	0.0	63.6



#14
 Carbon disulfide
 Concen: 48.316 ug/L
 RT: 2.31 min Scan# 379
 Delta R.T. -0.00 min
 Lab File: VV018039.D
 Acq: 17 Aug 2020 20:41

Tgt Ion	Resp	Lower	Upper
76	248641		
78	9.2	7.4	11.2



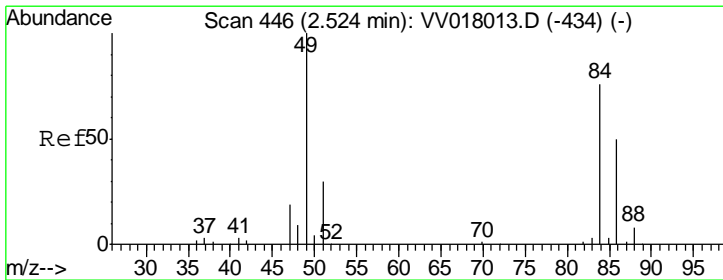
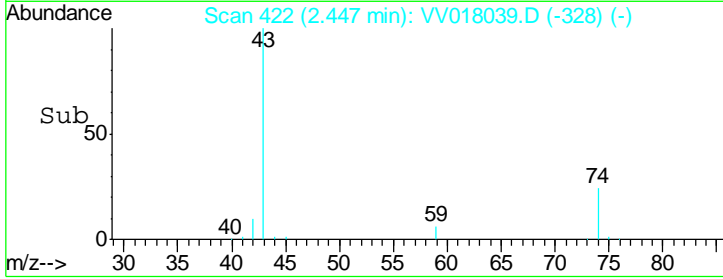
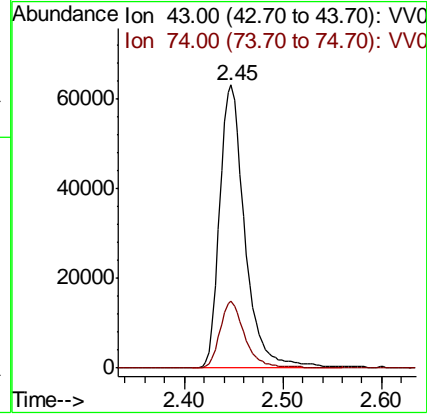
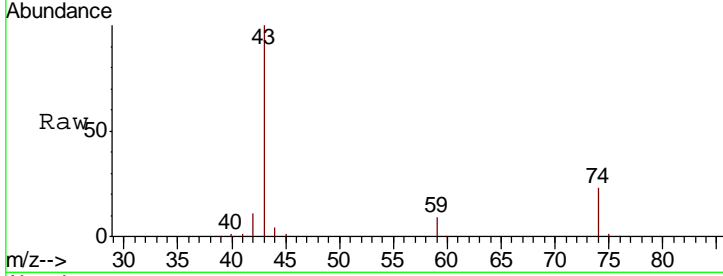


#15
 Methyl Acetate
 Concen: 48.974 ug/L
 RT: 2.45 min Scan# 422
 Delta R.T. 0.00 min
 Lab File: VV018039.D
 Acq: 17 Aug 2020 20:41

Instrument :
 MSVOA_V
 ClientSampled :
 VSTD05072

Tgt Ion: 43 Resp: 113707

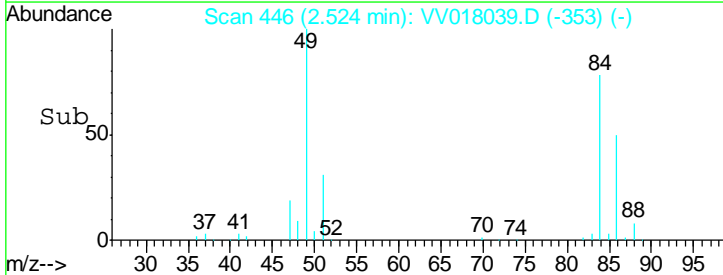
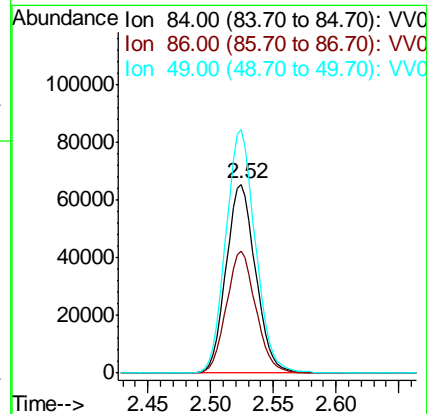
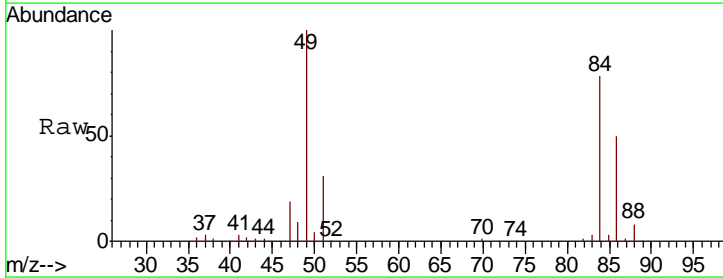
Ion	Ratio	Lower	Upper
43	100		
74	23.2	18.4	27.6

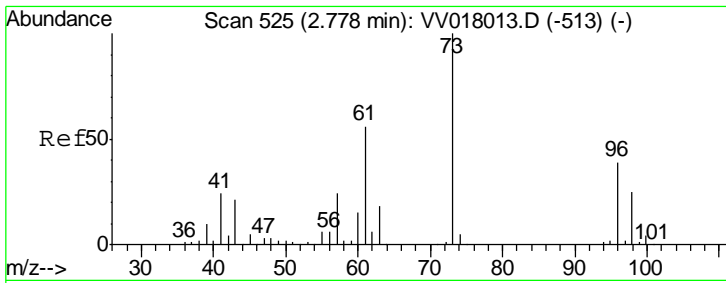


#16
 Methylene chloride
 Concen: 45.139 ug/L
 RT: 2.52 min Scan# 446
 Delta R.T. 0.00 min
 Lab File: VV018039.D
 Acq: 17 Aug 2020 20:41

Tgt Ion: 84 Resp: 107522

Ion	Ratio	Lower	Upper
84	100		
86	64.8	46.3	85.9
49	128.7	89.7	166.5

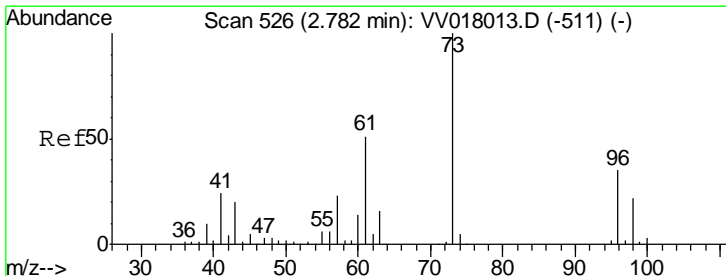
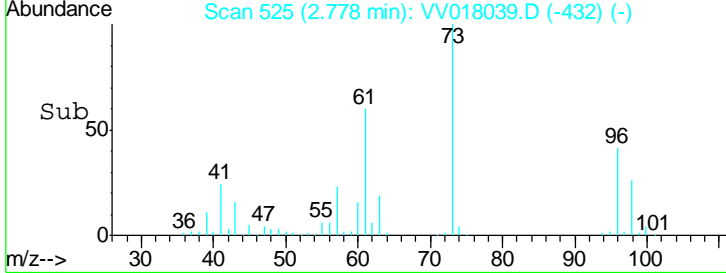
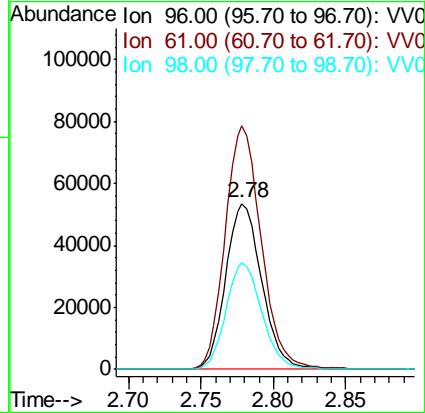
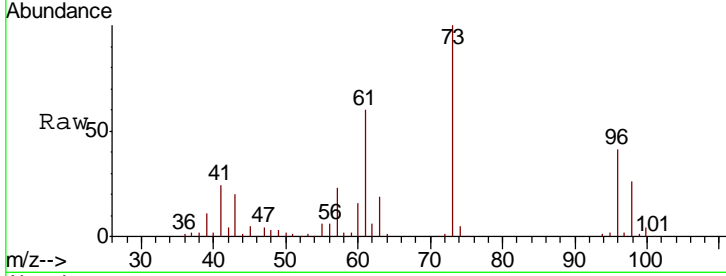




#17
 trans-1,2-Dichloroethene
 Concen: 47.905 ug/L
 RT: 2.78 min Scan# 525
 Delta R.T. -0.00 min
 Lab File: VV018039.D
 Acq: 17 Aug 2020 20:41

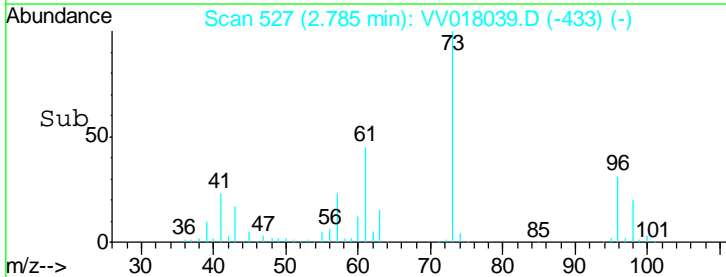
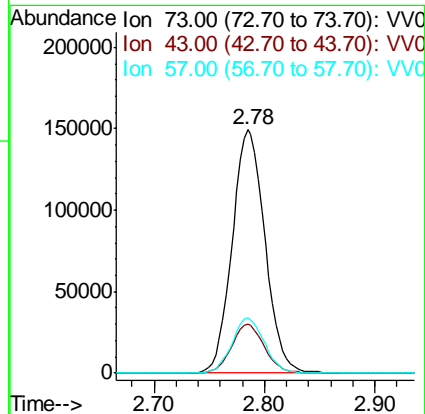
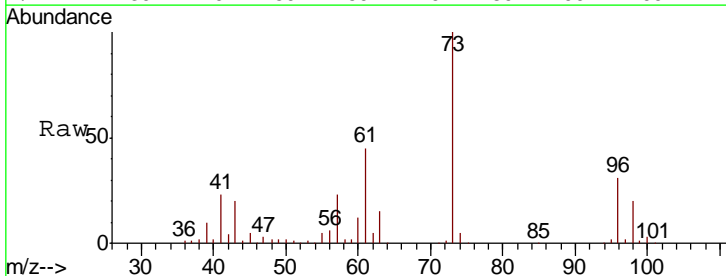
Instrument :
 MSVOA_V
ClientSampled :
 VSTD05072

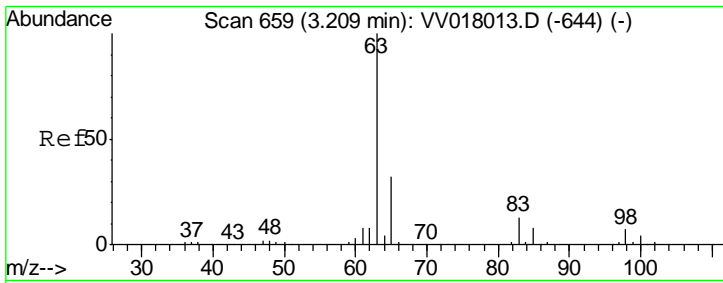
Tgt Ion	Resp	Lower	Upper
96	92073		
61	146.8	102.4	190.2
98	64.2	44.4	82.5



#18
 Methyl tert-butyl Ether
 Concen: 48.325 ug/L
 RT: 2.78 min Scan# 527
 Delta R.T. 0.00 min
 Lab File: VV018039.D
 Acq: 17 Aug 2020 20:41

Tgt Ion	Resp	Lower	Upper
73	307170		
43	20.1	15.9	23.9
57	22.6	18.1	27.1

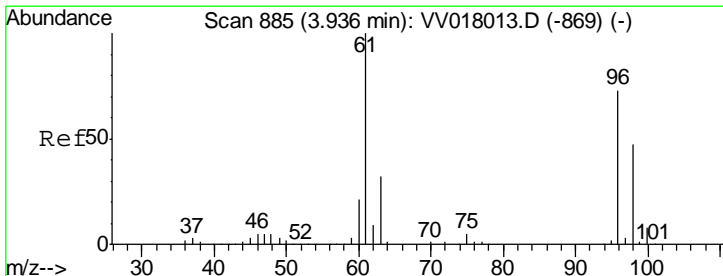
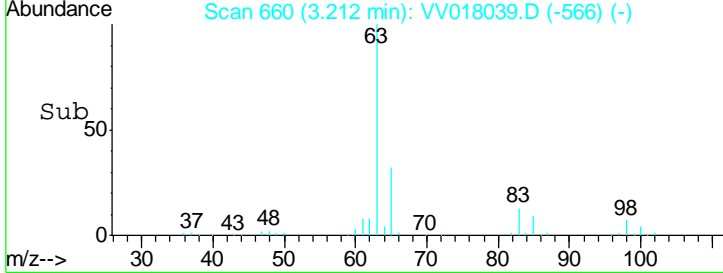
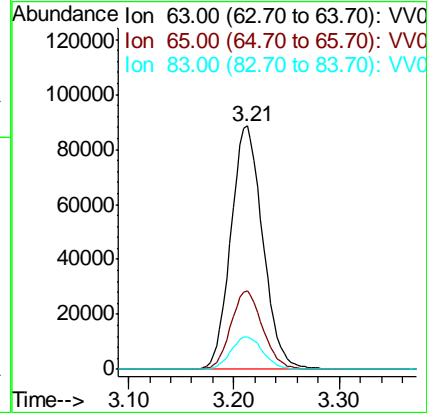
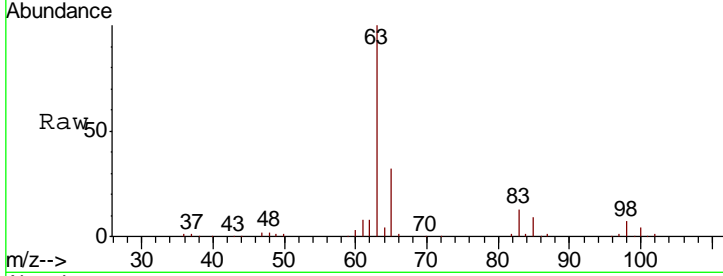




#19
 1,1-Dichloroethane
 Concen: 48.079 ug/L
 RT: 3.21 min Scan# 660
 Delta R.T. 0.00 min
 Lab File: VV018039.D
 Acq: 17 Aug 2020 20:41

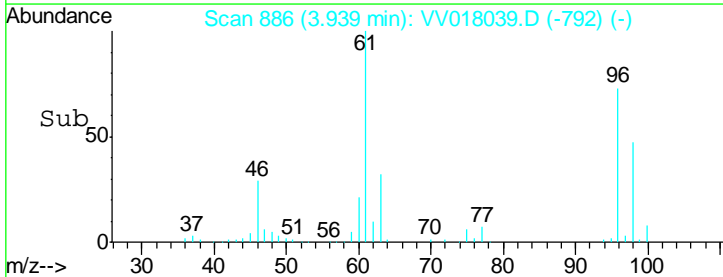
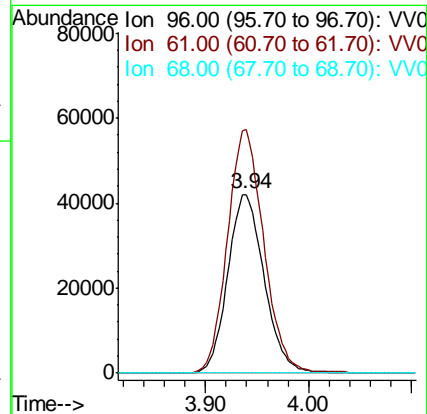
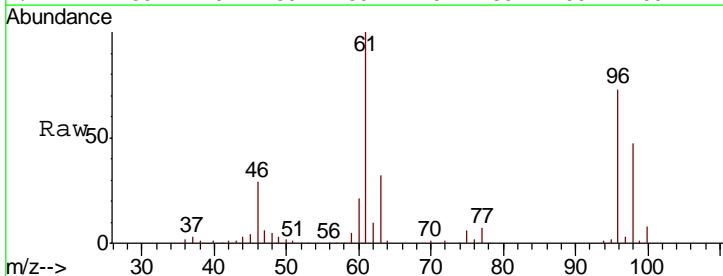
Instrument :
 MSVOA_V
 ClientSampleID :
 VSTD05072

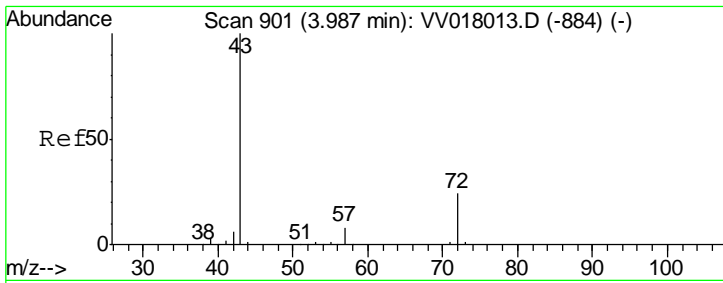
Tgt Ion	Resp	Lower	Upper
63	185808		
65	32.2	22.5	41.7
83	13.4	9.2	17.2



#20
 cis-1,2-Dichloroethene
 Concen: 48.947 ug/L
 RT: 3.94 min Scan# 886
 Delta R.T. 0.00 min
 Lab File: VV018039.D
 Acq: 17 Aug 2020 20:41

Tgt Ion	Resp	Lower	Upper
96	103381		
61	136.1	95.0	176.4
68	0.0	0.0	0.0

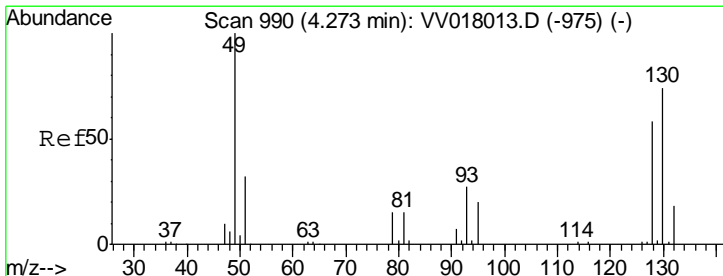
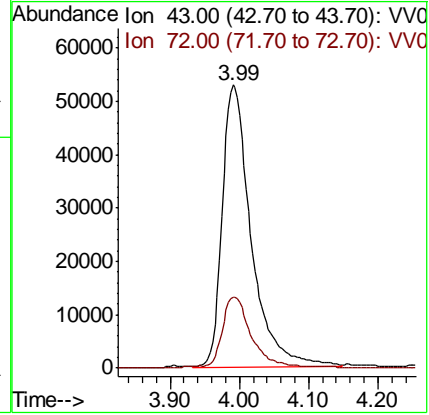
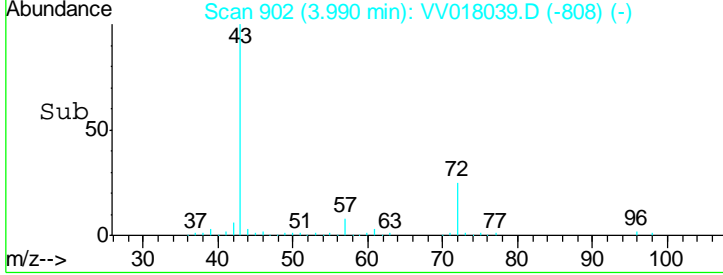
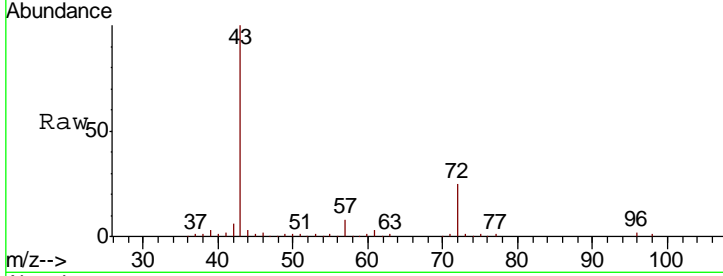




#22
 2-Butanone
 Concen: 95.461 ug/L
 RT: 3.99 min Scan# 902
 Delta R.T. 0.00 min
 Lab File: VV018039.D
 Acq: 17 Aug 2020 20:41

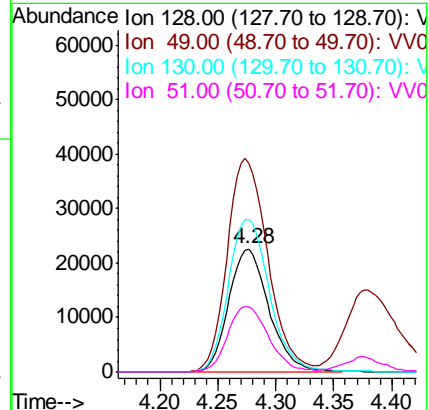
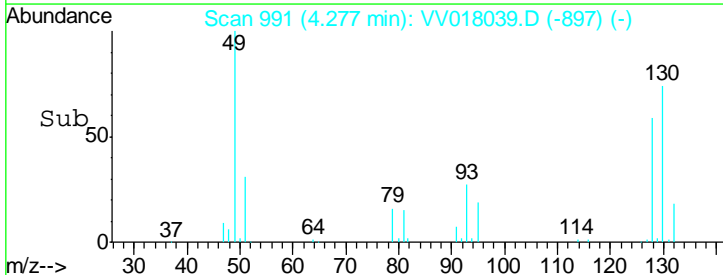
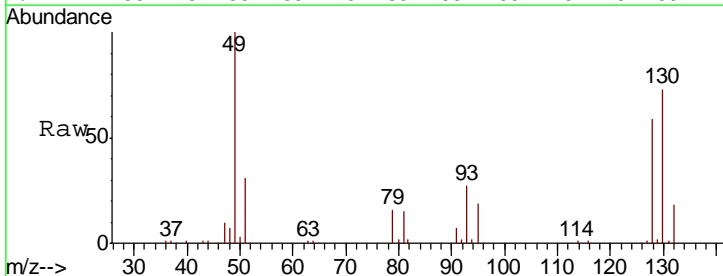
Instrument :
 MSVOA_V
ClientSampled :
 VSTD05072

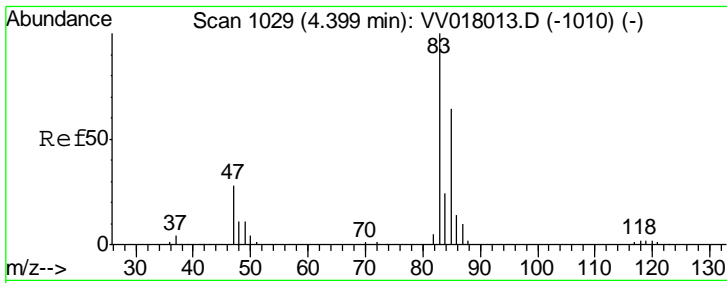
Tgt Ion	Resp	Lower	Upper
43	154076		
72	24.2	12.7	38.0



#23
 Bromochloromethane
 Concen: 49.584 ug/L
 RT: 4.28 min Scan# 991
 Delta R.T. 0.00 min
 Lab File: VV018039.D
 Acq: 17 Aug 2020 20:41

Tgt Ion	Resp	Lower	Upper
128	54709		
49	170.2	125.6	233.3
130	124.4	89.9	167.0
51	53.3	45.8	68.6

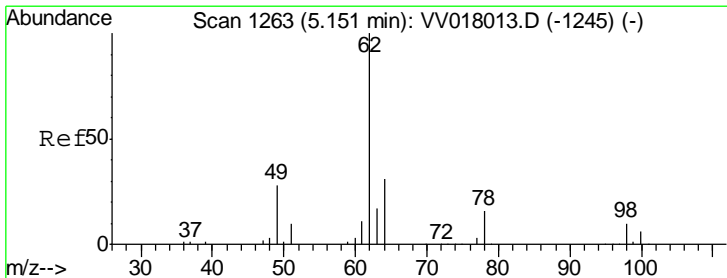
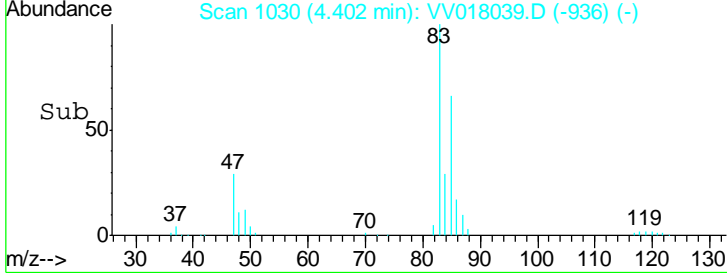
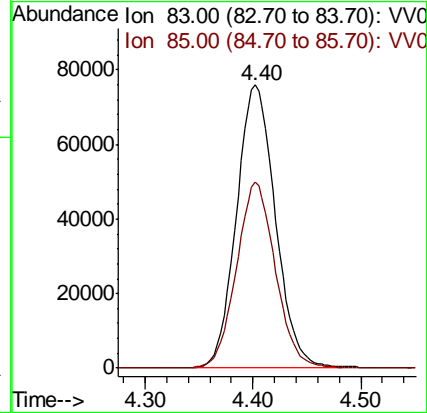
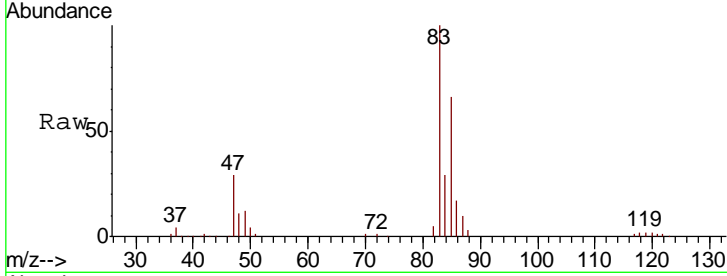




#25
 Chloroform
 Concen: 48.425 ug/L
 RT: 4.40 min Scan# 1030
 Delta R.T. 0.00 min
 Lab File: VV018039.D
 Acq: 17 Aug 2020 20:41

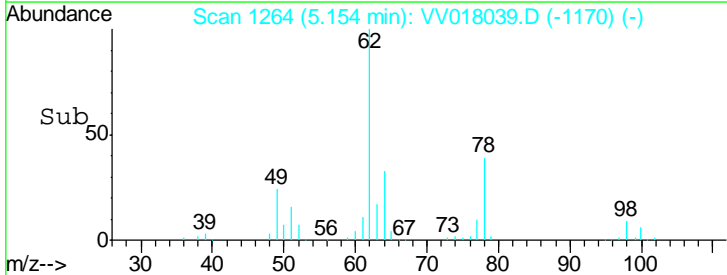
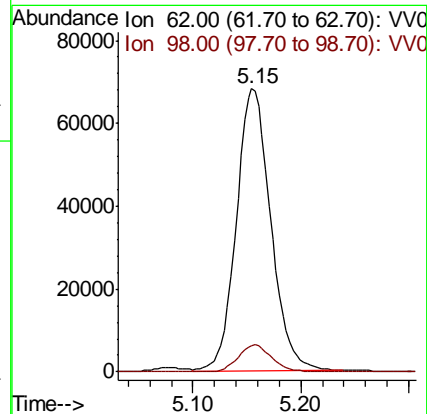
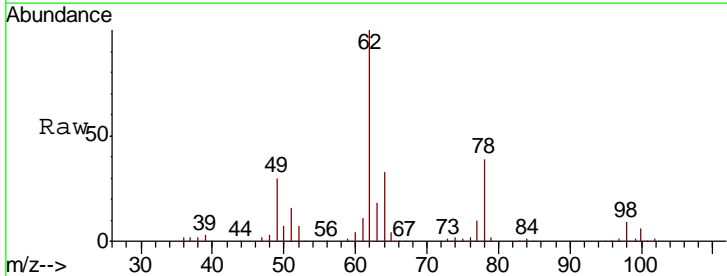
Instrument : MSVOA_V
 ClientSampled : VSTD05072

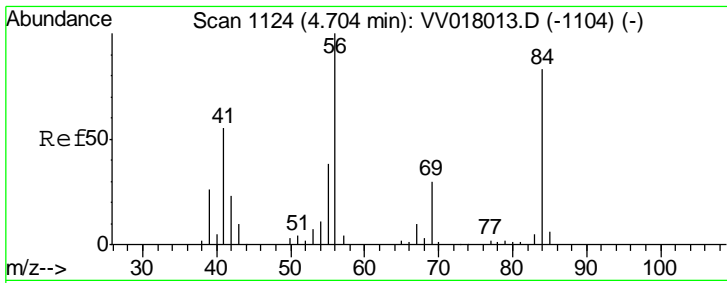
Tgt Ion	Resp	Lower	Upper
83	190884		
85	65.7	45.5	84.5



#27
 1,2-Dichloroethane
 Concen: 48.231 ug/L
 RT: 5.15 min Scan# 1264
 Delta R.T. 0.00 min
 Lab File: VV018039.D
 Acq: 17 Aug 2020 20:41

Tgt Ion	Resp	Lower	Upper
62	151324		
98	9.4	7.1	10.7

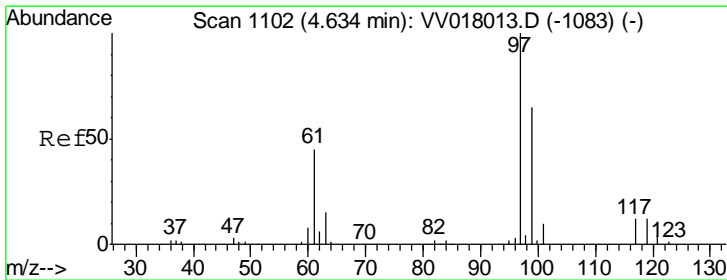
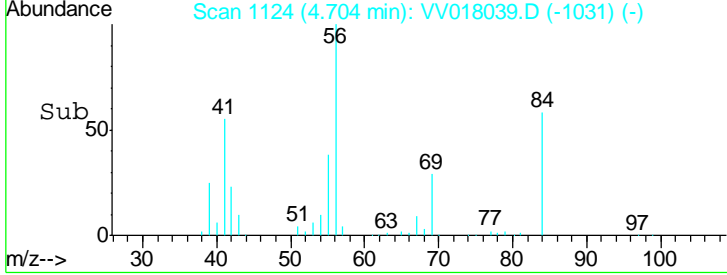
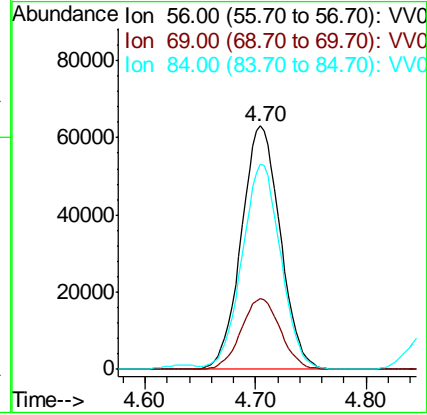
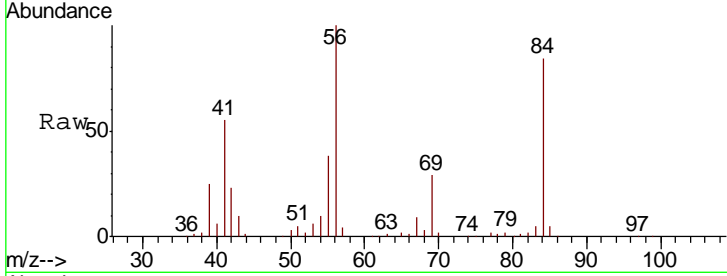




#29
 Cyclohexane
 Concen: 45.980 ug/L
 RT: 4.70 min Scan# 1124
 Delta R.T. -0.00 min
 Lab File: VV018039.D
 Acq: 17 Aug 2020 20:41

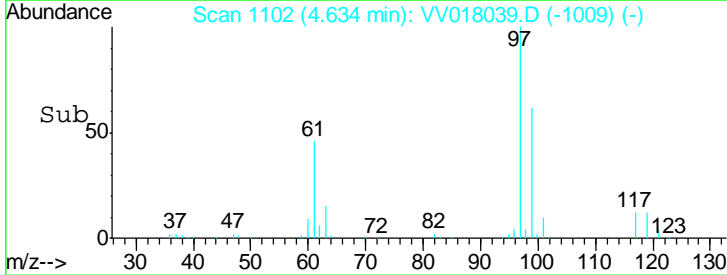
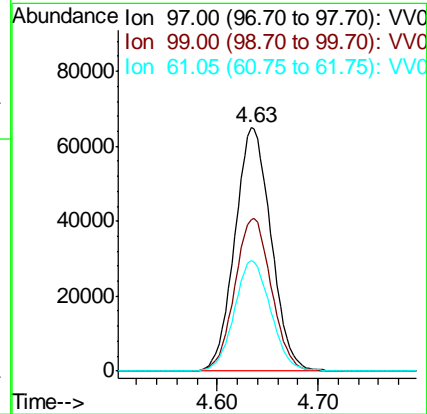
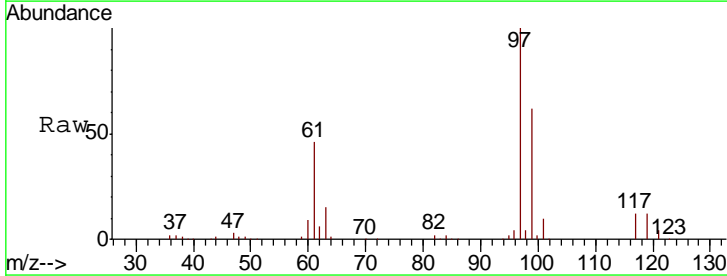
Instrument :
 MSVOA_V
ClientSampled :
 VSTD05072

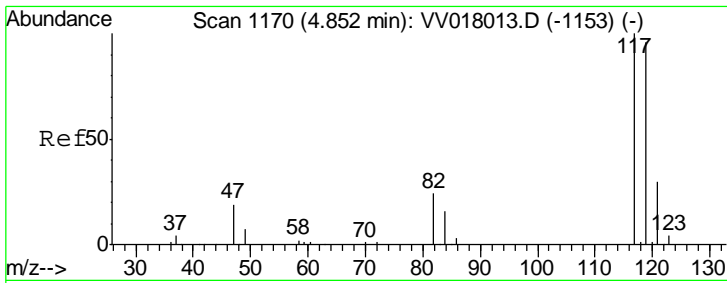
Tgt Ion	Resp	Lower	Upper
56	154081		
69	29.3	23.8	35.8
84	83.8	66.8	100.2



#30
 1,1,1-Trichloroethane
 Concen: 47.537 ug/L
 RT: 4.63 min Scan# 1102
 Delta R.T. -0.00 min
 Lab File: VV018039.D
 Acq: 17 Aug 2020 20:41

Tgt Ion	Resp	Lower	Upper
97	161742		
99	63.3	50.6	76.0
61	45.6	37.0	55.6

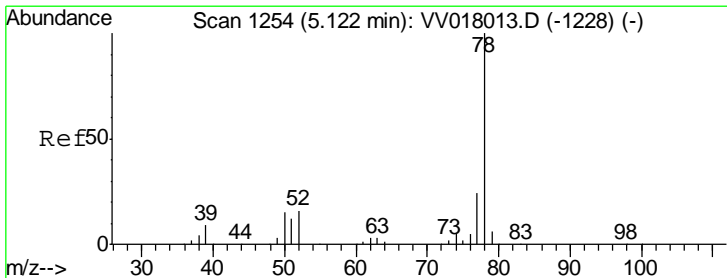
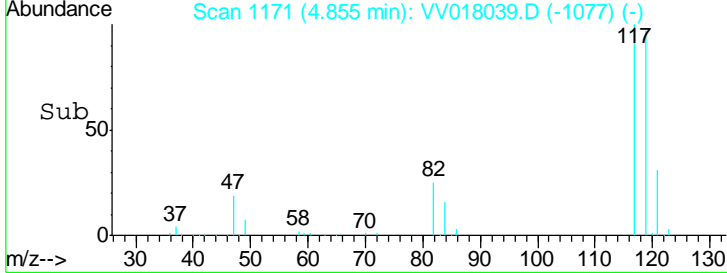
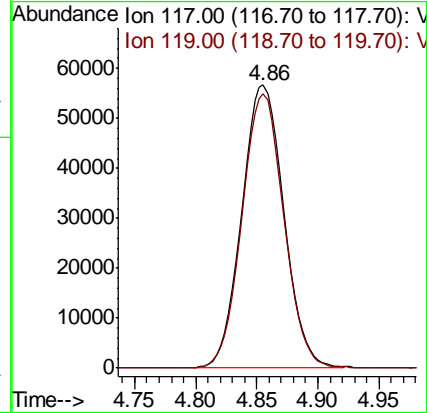
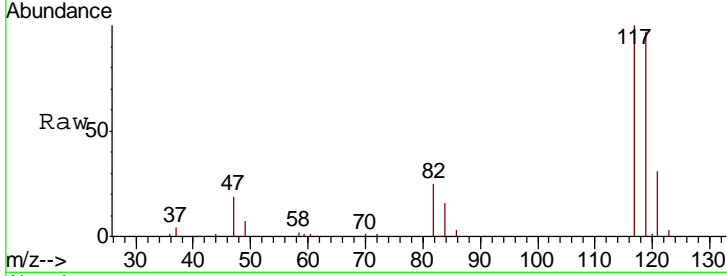




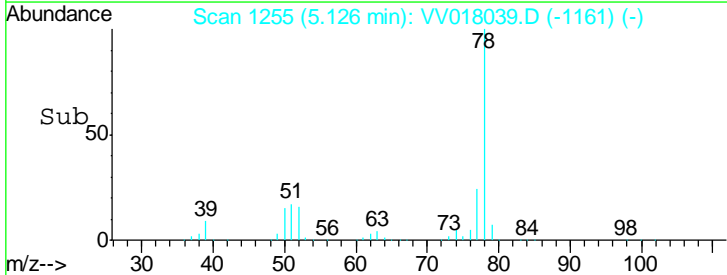
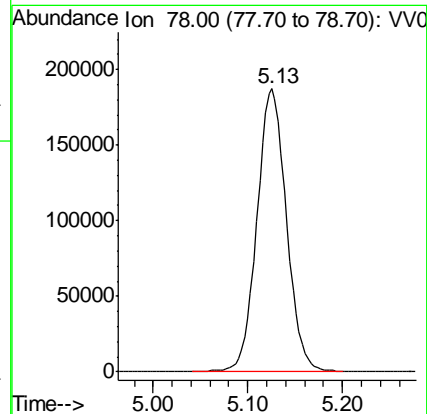
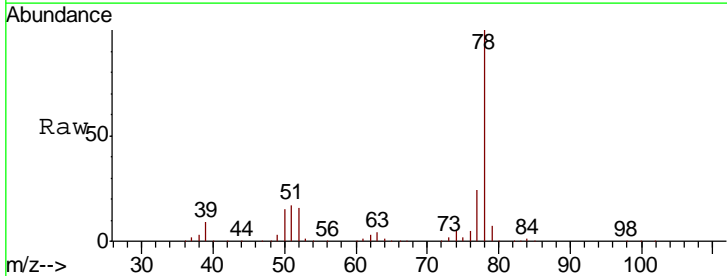
#31
 Carbon tetrachloride
 Concen: 47.847 ug/L
 RT: 4.86 min Scan# 1171
 Delta R.T. 0.00 min
 Lab File: VV018039.D
 Acq: 17 Aug 2020 20:41

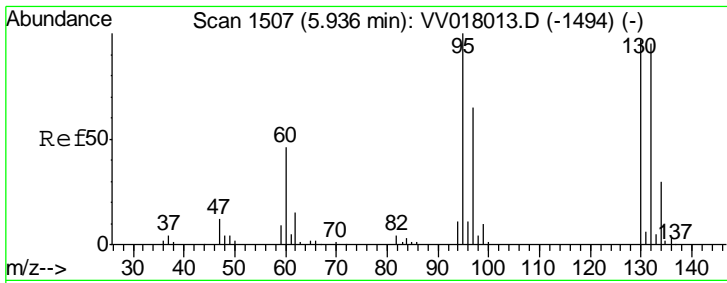
Instrument :
 MSVOA_V
 ClientSampled :
 VSTD05072

Tgt Ion: 117 Resp: 135524
 Ion Ratio Lower Upper
 117 100
 119 96.2 77.0 115.6



#33
 Benzene
 Concen: 47.253 ug/L
 RT: 5.13 min Scan# 1255
 Delta R.T. 0.00 min
 Lab File: VV018039.D
 Acq: 17 Aug 2020 20:41
 Tgt Ion: 78 Resp: 405905

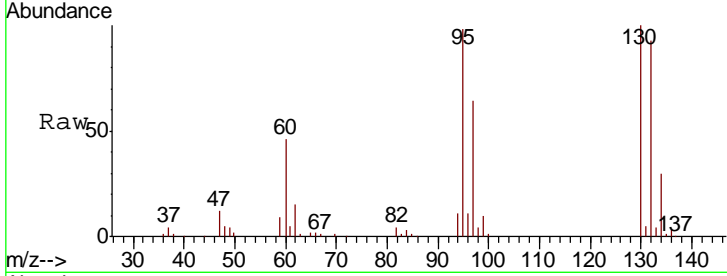




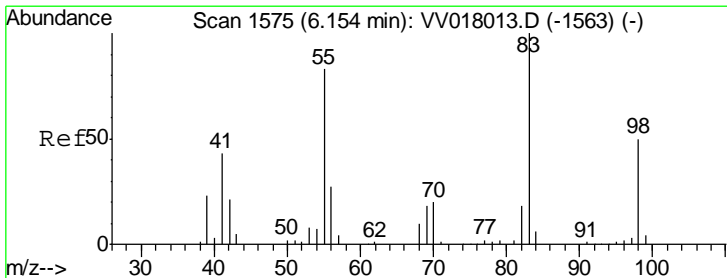
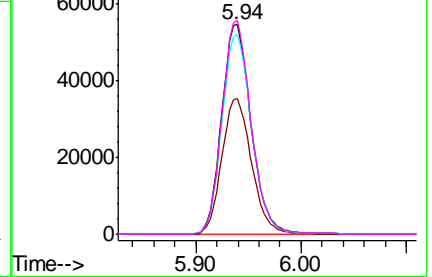
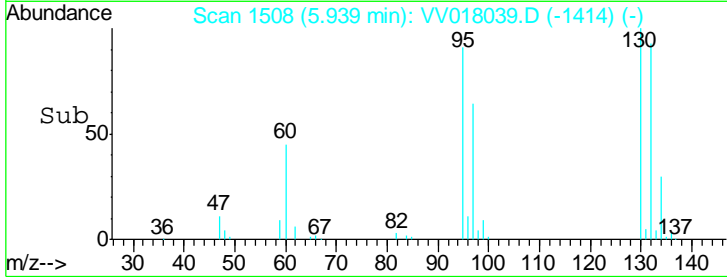
#34
 Trichloroethene
 Concen: 46.877 ug/L
 RT: 5.94 min Scan# 1508
 Delta R.T. 0.00 min
 Lab File: VV018039.D
 Acq: 17 Aug 2020 20:41

Instrument :
 MSVOA_V
 ClientSampled :
 VSTD05072

Tgt Ion	Resp	Lower	Upper
95	106438		
97	64.8	46.0	85.4
132	94.9	65.8	122.2
130	101.8	69.2	128.6

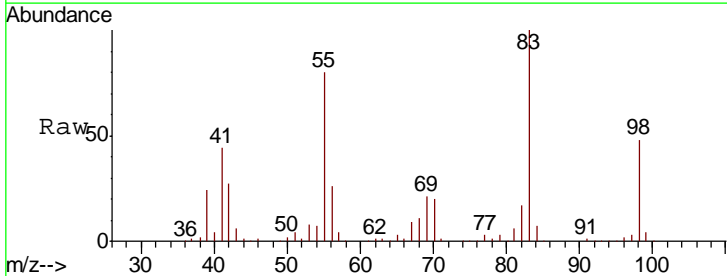


Abundance
 Ion 95.00 (94.70 to 95.70): VV0
 Ion 97.00 (96.70 to 97.70): VV0
 Ion 132.00 (131.70 to 132.70): VV0
 Ion 130.00 (129.70 to 130.70): VV0

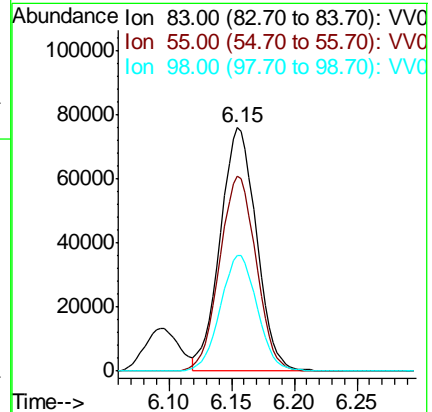
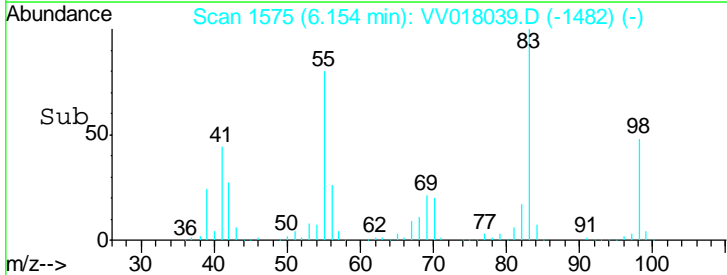


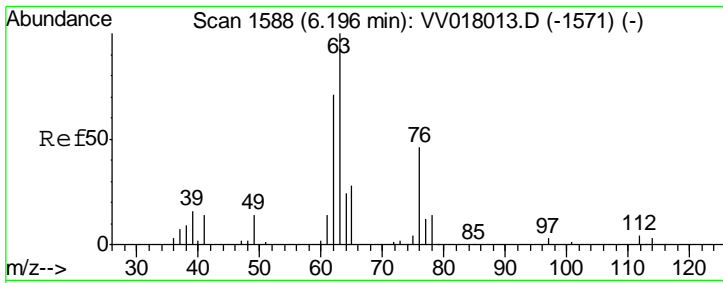
#35
 Methylcyclohexane
 Concen: 45.164 ug/L
 RT: 6.15 min Scan# 1575
 Delta R.T. -0.00 min
 Lab File: VV018039.D
 Acq: 17 Aug 2020 20:41

Tgt Ion	Resp	Lower	Upper
83	152488		
55	81.0	64.9	97.3
98	48.2	38.7	58.1



Abundance
 Ion 83.00 (82.70 to 83.70): VV0
 Ion 55.00 (54.70 to 55.70): VV0
 Ion 98.00 (97.70 to 98.70): VV0

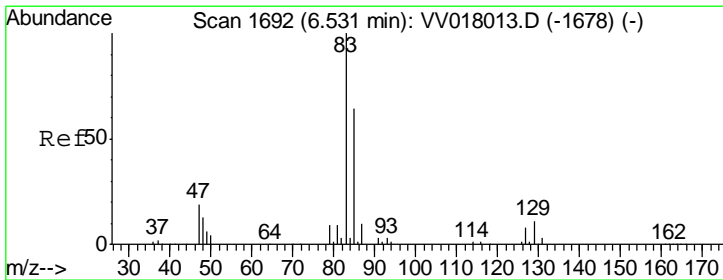
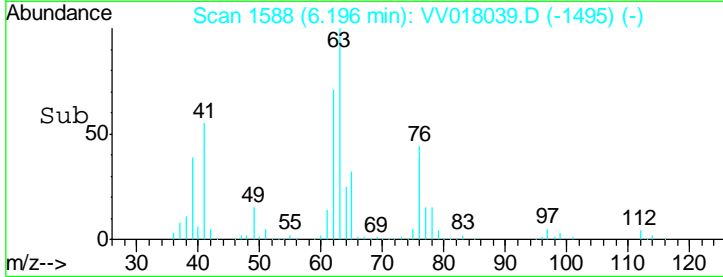
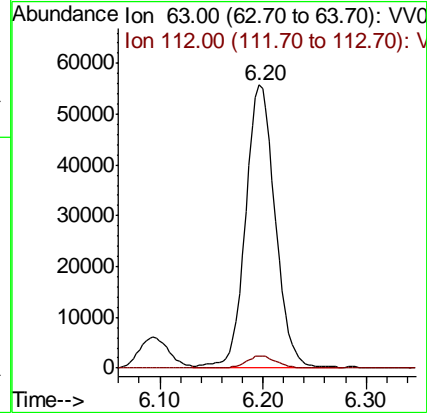
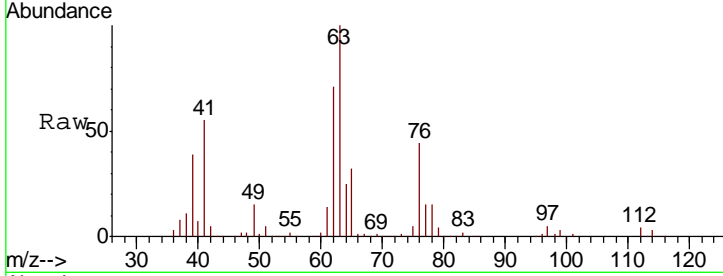




#37
 1,2-Dichloropropane
 Concen: 47.640 ug/L
 RT: 6.20 min Scan# 1588
 Delta R.T. -0.00 min
 Lab File: VV018039.D
 Acq: 17 Aug 2020 20:41

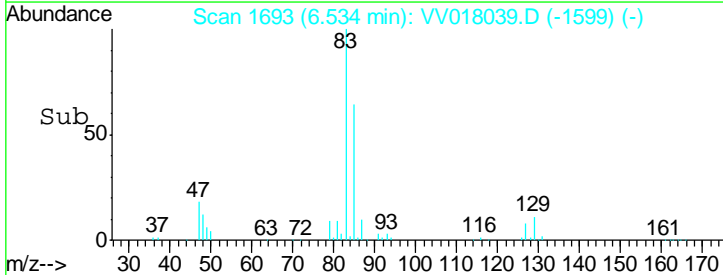
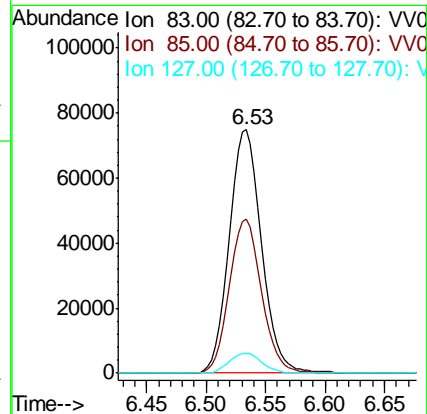
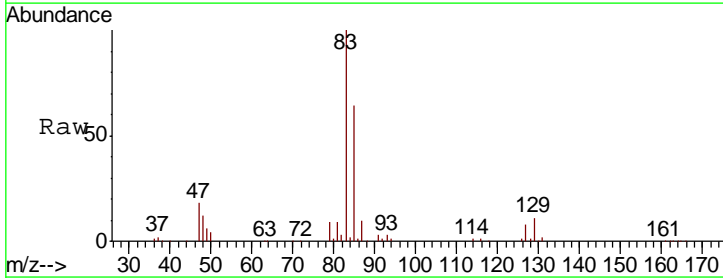
Instrument :
 MSVOA_V
 ClientSampled :
 VSTD05072

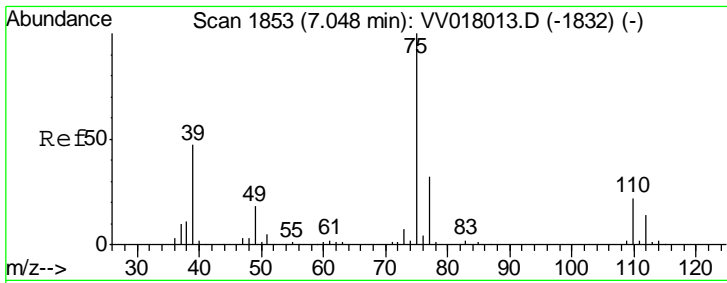
Tgt Ion	Resp	Lower	Upper
63	111601		
112	4.3	3.5	5.3



#38
 Bromodichloromethane
 Concen: 48.398 ug/L
 RT: 6.53 min Scan# 1693
 Delta R.T. 0.00 min
 Lab File: VV018039.D
 Acq: 17 Aug 2020 20:41

Tgt Ion	Resp	Lower	Upper
83	140828		
85	63.5	44.3	82.3
127	8.3	6.5	9.7

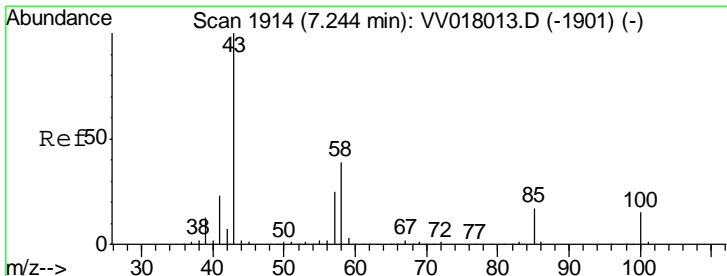
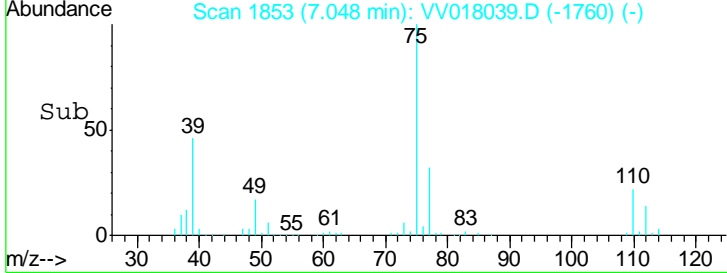
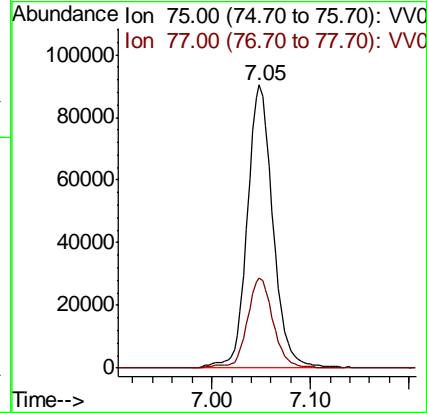
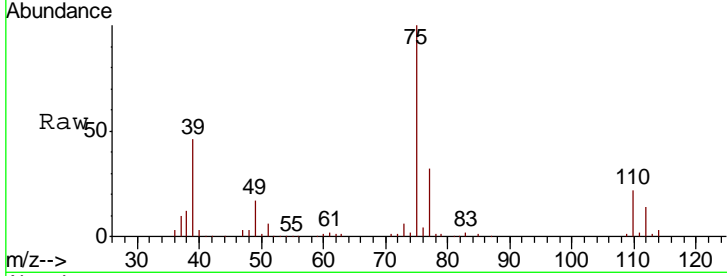




#39
 cis-1,3-Dichloropropene
 Concen: 48.911 ug/L
 RT: 7.05 min Scan# 1853
 Delta R.T. 0.00 min
 Lab File: VV018039.D
 Acq: 17 Aug 2020 20:41

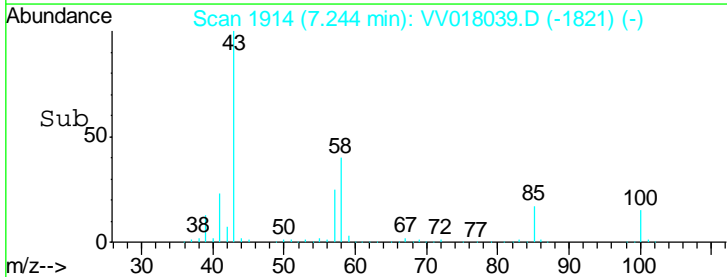
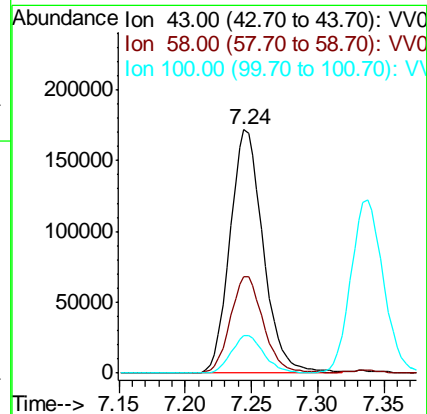
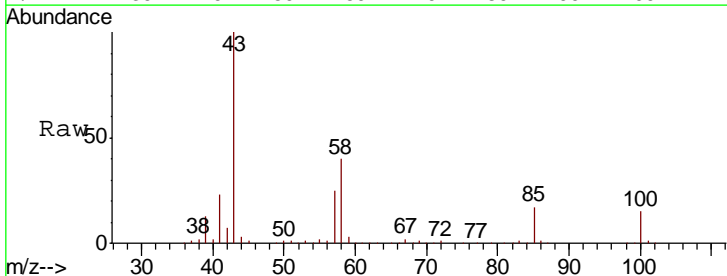
Instrument :
 MSVOA_V
 ClientSampled :
 VSTD05072

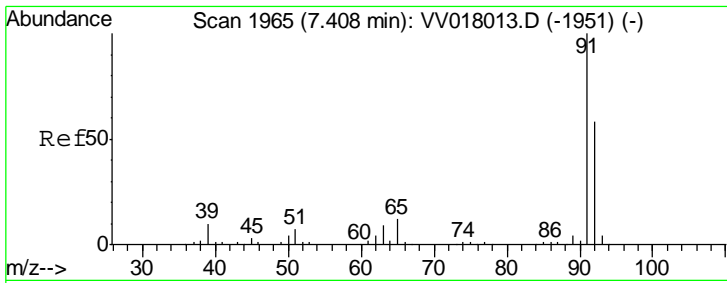
Tgt Ion: 75 Resp: 162431
 Ion Ratio Lower Upper
 75 100
 77 32.0 22.3 41.5



#40
 4-Methyl-2-pentanone
 Concen: 97.847 ug/L
 RT: 7.24 min Scan# 1914
 Delta R.T. 0.00 min
 Lab File: VV018039.D
 Acq: 17 Aug 2020 20:41

Tgt Ion: 43 Resp: 299645
 Ion Ratio Lower Upper
 43 100
 58 39.3 31.9 47.9
 100 15.2 12.2 18.2

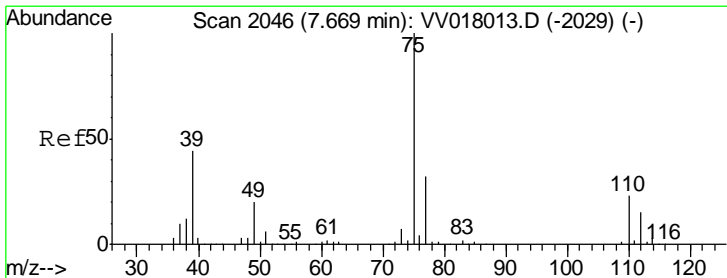
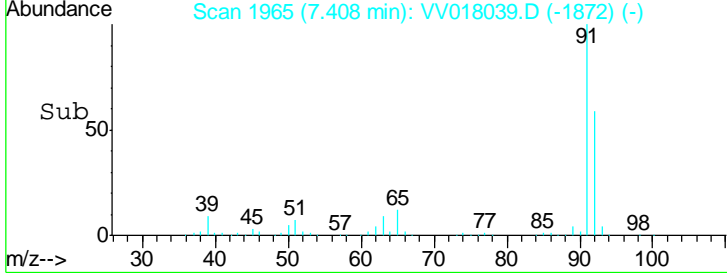
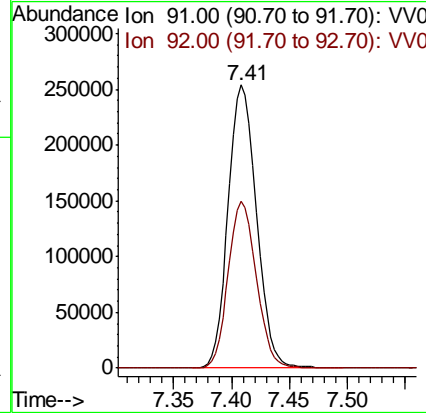
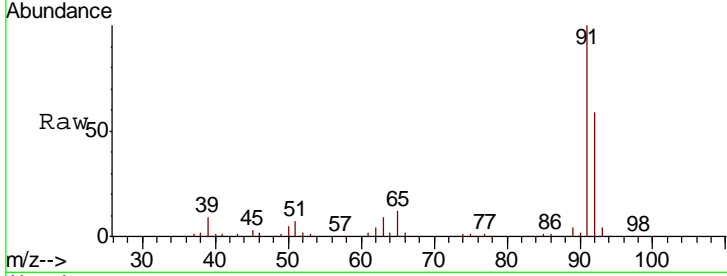




#42
 Toluene
 Concen: 48.039 ug/L
 RT: 7.41 min Scan# 1965
 Delta R.T. 0.00 min
 Lab File: VV018039.D
 Acq: 17 Aug 2020 20:41

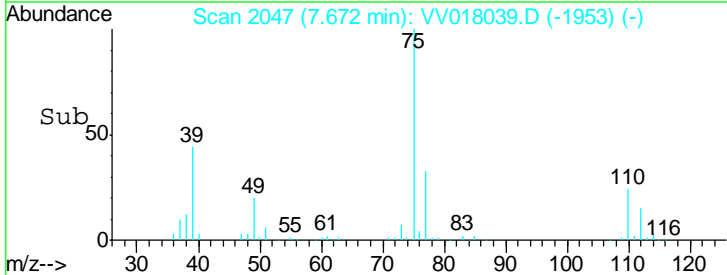
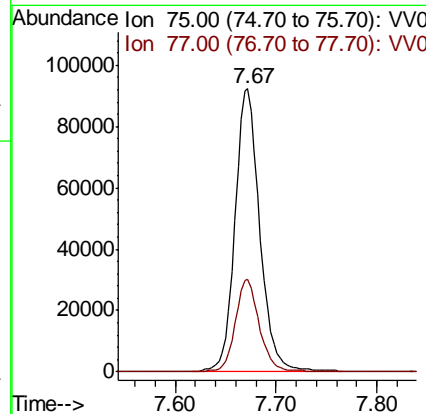
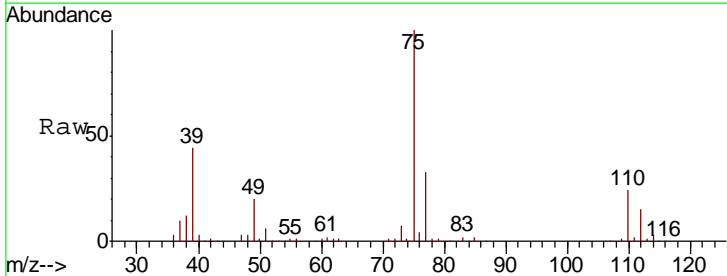
Instrument : MSVOA_V
 ClientSampled : VSTD05072

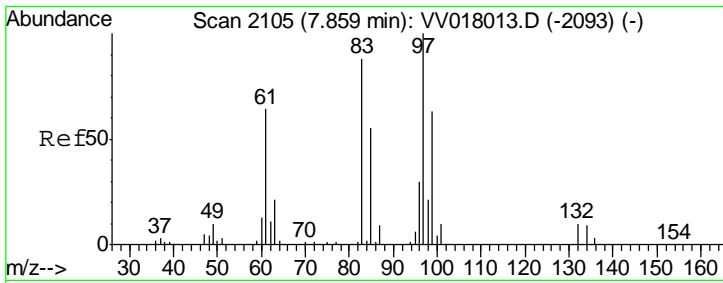
Tgt Ion	Resp	Lower	Upper
91	100		
92	58.9	40.6	75.4



#44
 trans-1,3-Dichloropropene
 Concen: 50.284 ug/L
 RT: 7.67 min Scan# 2047
 Delta R.T. 0.00 min
 Lab File: VV018039.D
 Acq: 17 Aug 2020 20:41

Tgt Ion	Resp	Lower	Upper
75	100		
77	32.5	22.3	41.5

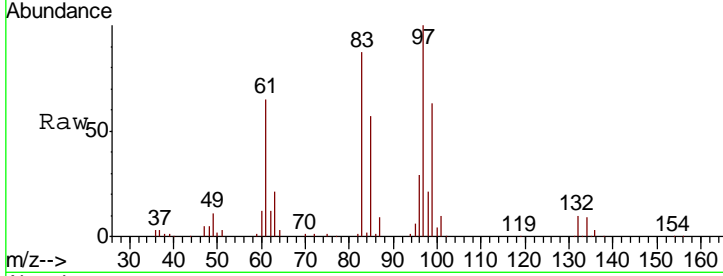




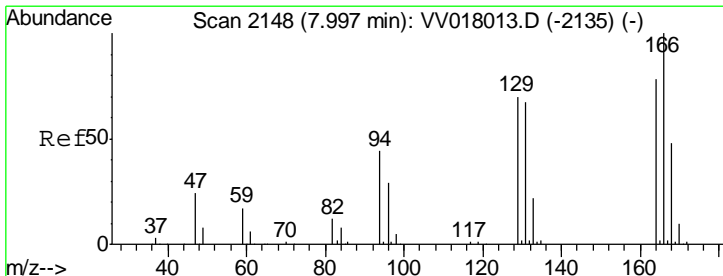
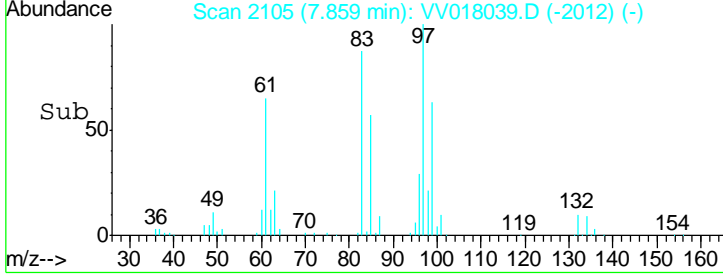
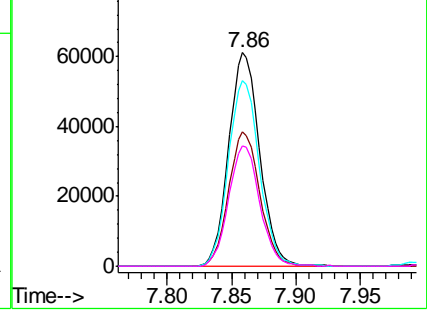
#45
 1,1,2-Trichloroethane
 Concen: 47.089 ug/L
 RT: 7.86 min Scan# 2105
 Delta R.T. -0.00 min
 Lab File: VV018039.D
 Acq: 17 Aug 2020 20:41

Instrument :
 MSVOA_V
 ClientSampled :
 VSTD05072

Tgt Ion	Resp	Lower	Upper
97	102156		
99	62.7	44.2	82.2
83	86.8	61.0	113.4
85	56.5	39.5	73.4

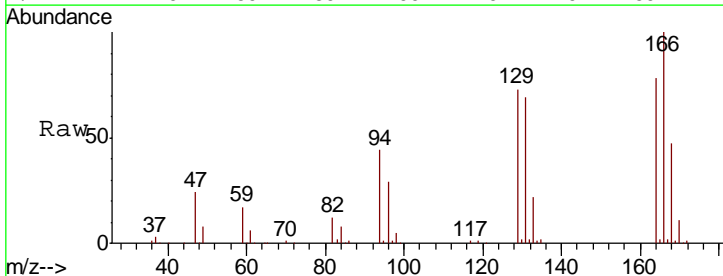


Abundance Ion 97.00 (96.70 to 97.70): VV018013.D (-2093) (-)
 Ion 99.00 (98.70 to 99.70): VV018013.D (-2093) (-)
 Ion 83.00 (82.70 to 83.70): VV018013.D (-2093) (-)
 Ion 85.00 (84.70 to 85.70): VV018013.D (-2093) (-)

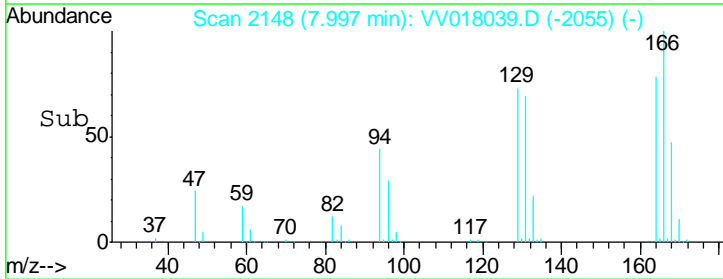
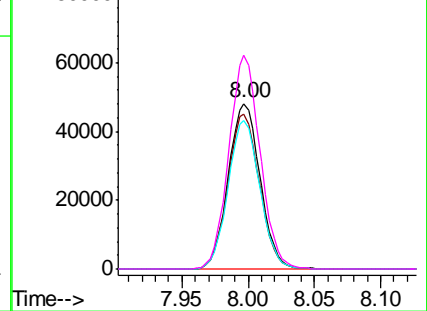


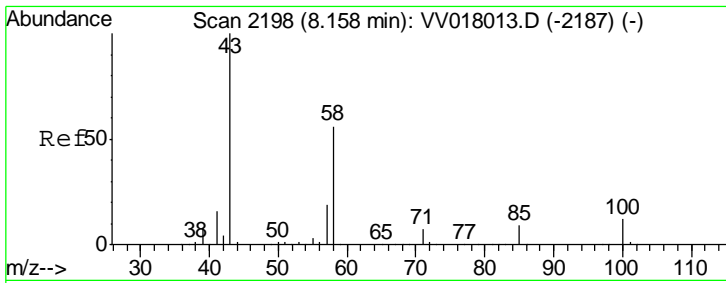
#46
 Tetrachloroethene
 Concen: 48.315 ug/L
 RT: 8.00 min Scan# 2148
 Delta R.T. 0.00 min
 Lab File: VV018039.D
 Acq: 17 Aug 2020 20:41

Tgt Ion	Resp	Lower	Upper
164	80456		
129	93.6	64.8	120.3
131	89.4	64.5	119.9
166	128.9	88.9	165.1



Abundance Ion 164.00 (163.70 to 164.70): VV018013.D (-2135) (-)
 Ion 129.00 (128.70 to 129.70): VV018013.D (-2135) (-)
 Ion 131.00 (130.70 to 131.70): VV018013.D (-2135) (-)
 Ion 166.00 (165.70 to 166.70): VV018013.D (-2135) (-)

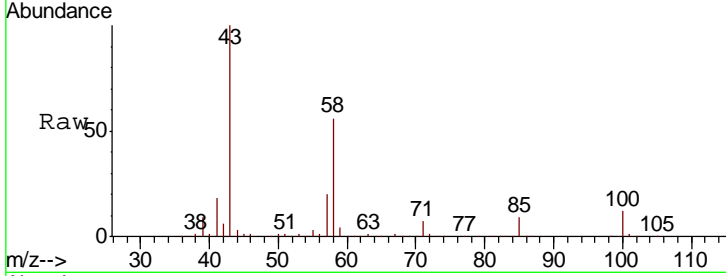




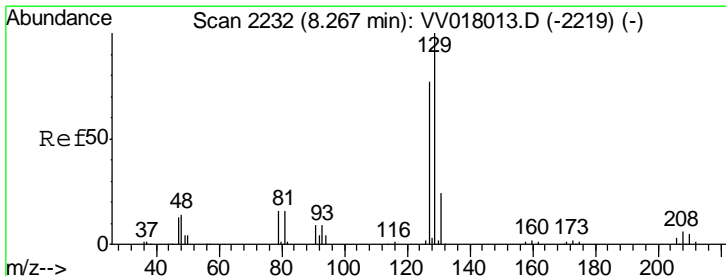
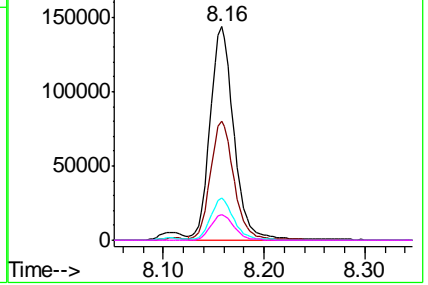
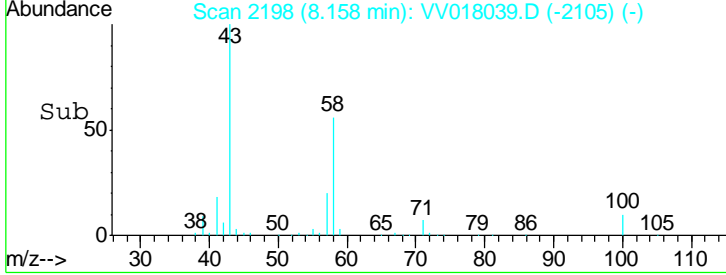
#48
 2-Hexanone
 Concen: 94.537 ug/L
 RT: 8.16 min Scan# 2198
 Delta R.T. 0.00 min
 Lab File: VV018039.D
 Acq: 17 Aug 2020 20:41

Instrument :
 MSVOA_V
 ClientSampled :
 VSTD05072

Tgt Ion	Resp	Lower	Upper
43	233456		
58	55.2	44.4	66.6
57	19.0	15.2	22.8
100	12.0	9.8	14.6

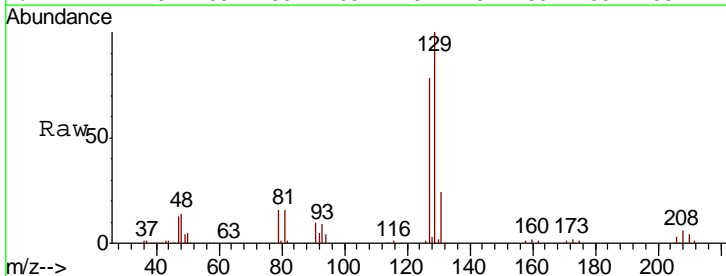


Abundance Ion 43.00 (42.70 to 43.70): VV018039.D (-2105) (-)
 Ion 58.00 (57.70 to 58.70): VV018039.D (-2105) (-)
 Ion 57.00 (56.70 to 57.70): VV018039.D (-2105) (-)
 Ion 100.00 (99.70 to 100.70): VV018039.D (-2105) (-)

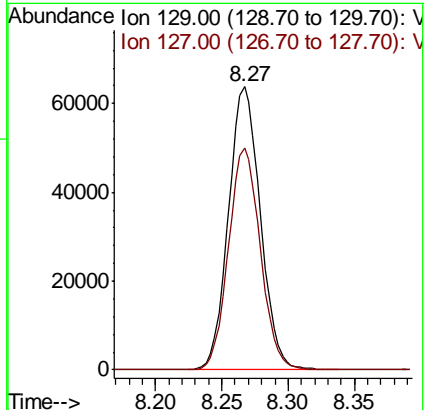
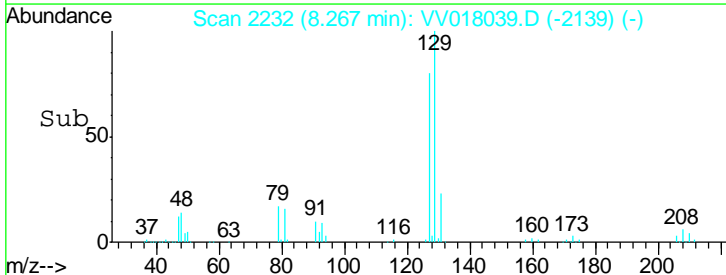


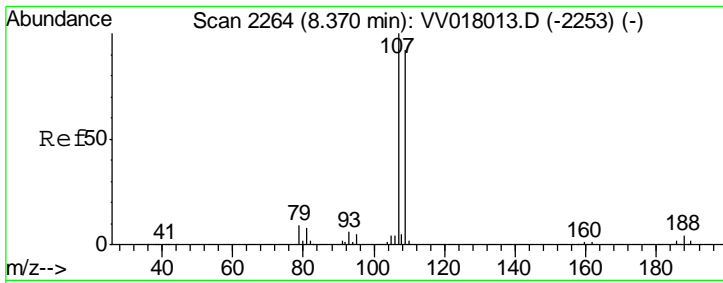
#49
 Dibromochloromethane
 Concen: 50.461 ug/L
 RT: 8.27 min Scan# 2232
 Delta R.T. 0.00 min
 Lab File: VV018039.D
 Acq: 17 Aug 2020 20:41

Tgt Ion	Resp	Lower	Upper
129	106853		
127	78.4	54.9	101.9



Abundance Ion 129.00 (128.70 to 129.70): VV018039.D (-2139) (-)
 Ion 127.00 (126.70 to 127.70): VV018039.D (-2139) (-)

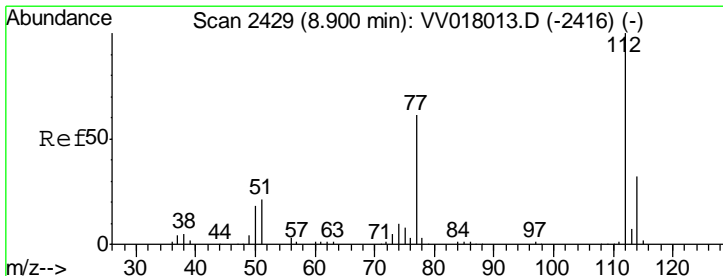
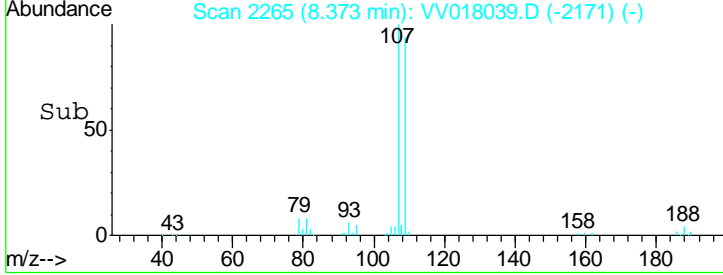
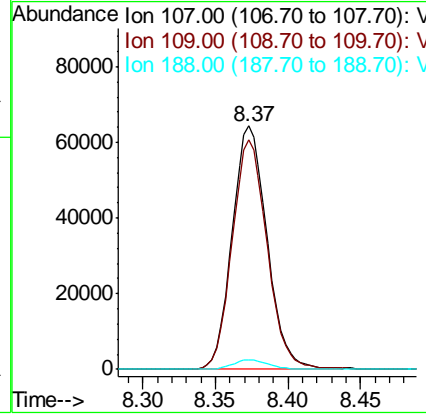
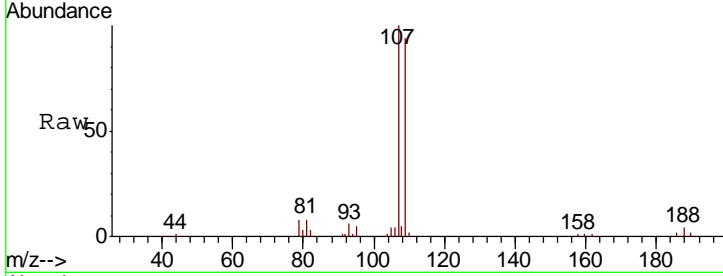




#50
 1,2-Dibromoethane
 Concen: 47.856 ug/L
 RT: 8.37 min Scan# 2265
 Delta R.T. 0.00 min
 Lab File: VV018039.D
 Acq: 17 Aug 2020 20:41

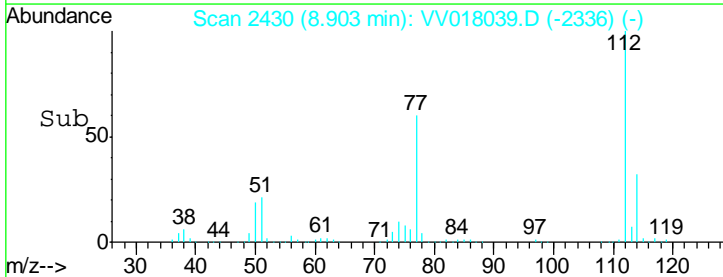
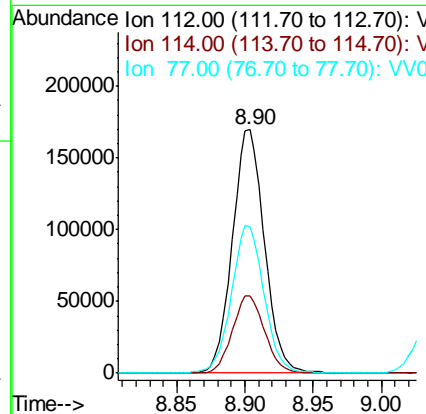
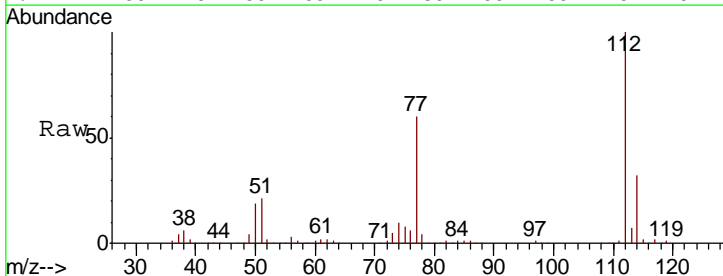
Instrument :
 MSVOA_V
ClientSampled :
 VSTD05072

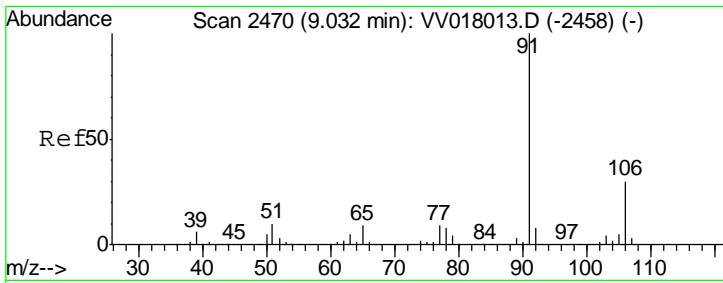
Tgt Ion	Resp	Lower	Upper
107	107416		
109	94.1	67.5	125.4
188	3.9	3.4	5.0



#51
 Chlorobenzene
 Concen: 48.062 ug/L
 RT: 8.90 min Scan# 2430
 Delta R.T. 0.00 min
 Lab File: VV018039.D
 Acq: 17 Aug 2020 20:41

Tgt Ion	Resp	Lower	Upper
112	277073		
114	31.7	22.7	42.3
77	60.2	49.4	74.2

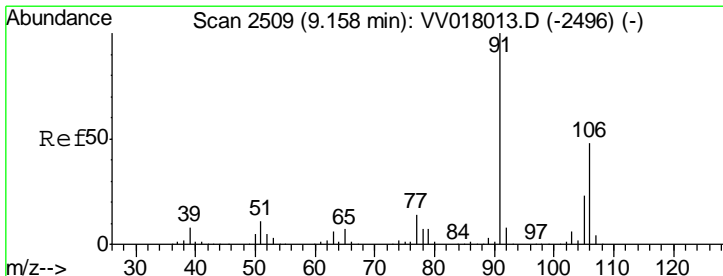
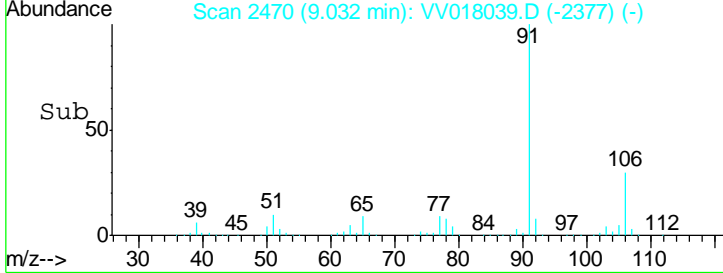
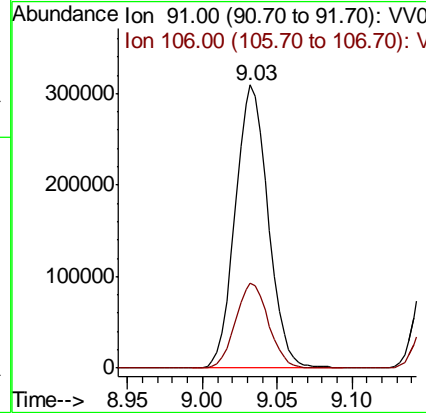
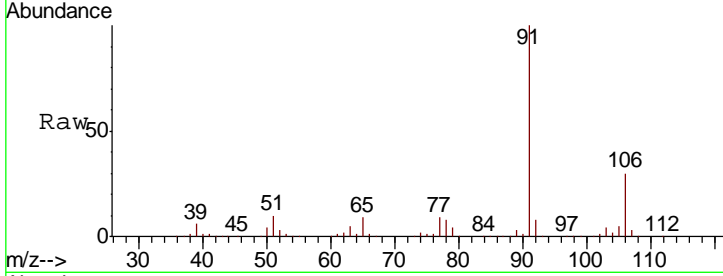




#52
 Ethylbenzene
 Concen: 48.405 ug/L
 RT: 9.03 min Scan# 2470
 Delta R.T. -0.00 min
 Lab File: VV018039.D
 Acq: 17 Aug 2020 20:41

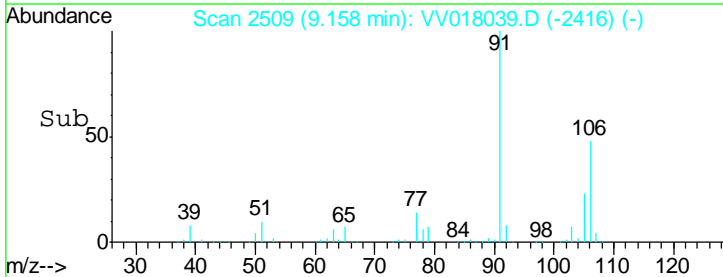
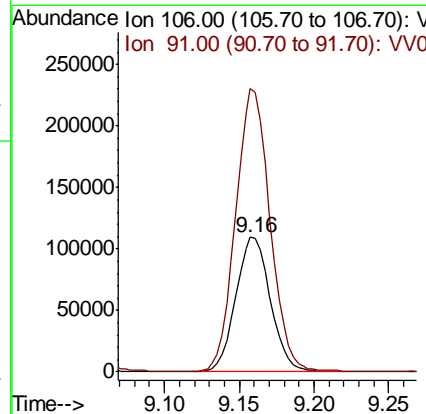
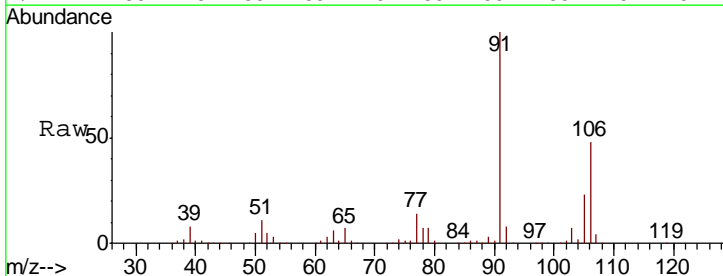
Instrument : MSVOA_V
 ClientSampled : VSTD05072

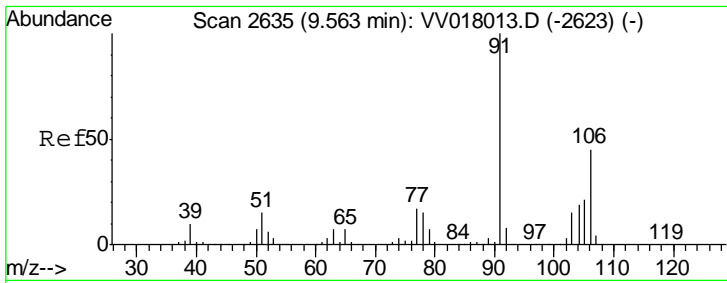
Tgt Ion: 91 Resp: 473082
 Ion Ratio Lower Upper
 91 100
 106 30.1 21.1 39.3



#53
 m,p-Xylene
 Concen: 48.930 ug/L
 RT: 9.16 min Scan# 2509
 Delta R.T. -0.00 min
 Lab File: VV018039.D
 Acq: 17 Aug 2020 20:41

Tgt Ion: 106 Resp: 175886
 Ion Ratio Lower Upper
 106 100
 91 210.2 147.3 273.6

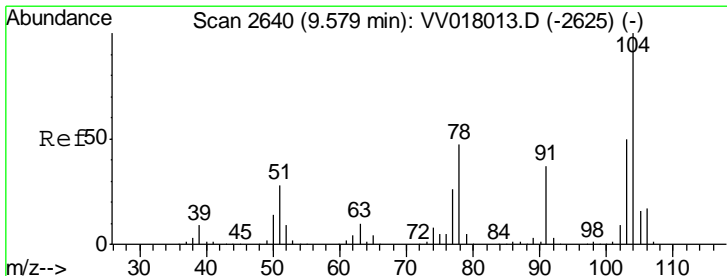
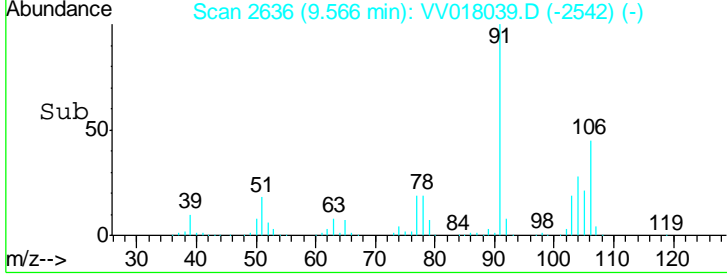
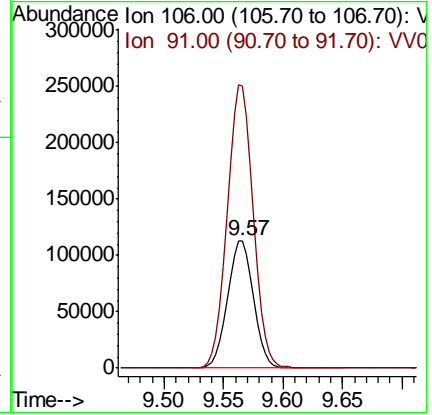
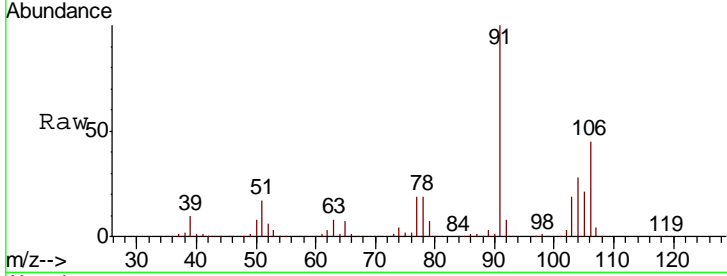




#54
 o-xylene
 Concen: 48.296 ug/L
 RT: 9.57 min Scan# 2636
 Delta R.T. 0.00 min
 Lab File: VV018039.D
 Acq: 17 Aug 2020 20:41

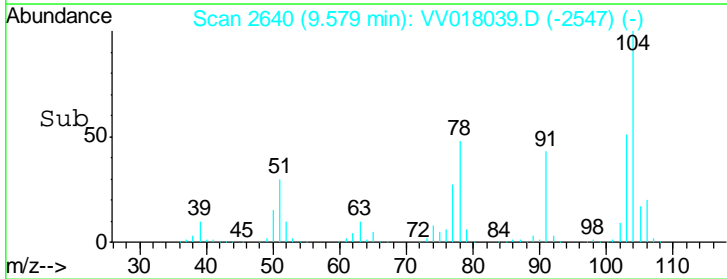
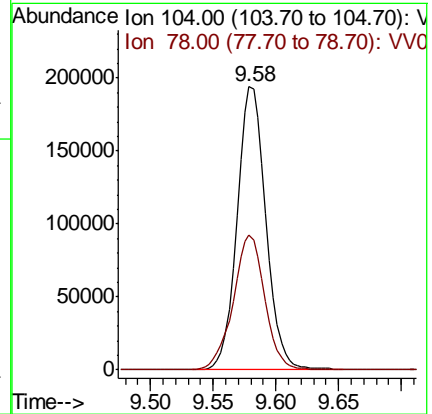
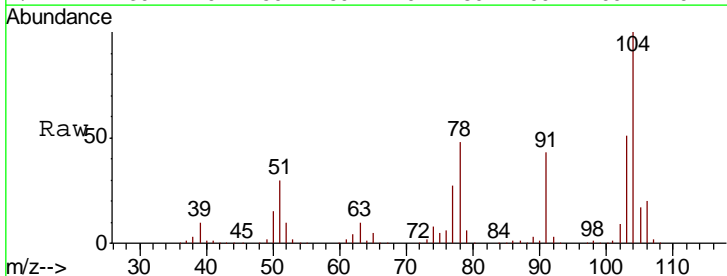
Instrument : MSVOA_V
 ClientSampled : VSTD05072

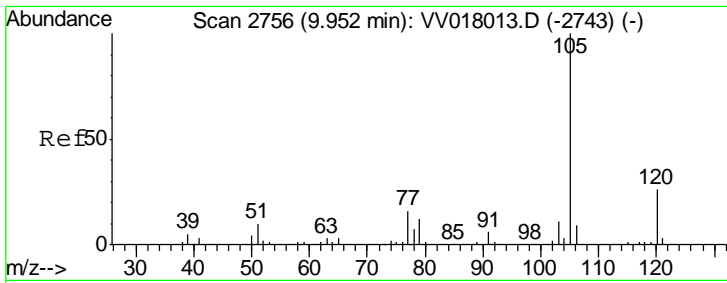
Tgt Ion:106 Resp: 171561
 Ion Ratio Lower Upper
 106 100
 91 221.2 156.0 289.8



#55
 Styrene
 Concen: 50.791 ug/L
 RT: 9.58 min Scan# 2640
 Delta R.T. -0.00 min
 Lab File: VV018039.D
 Acq: 17 Aug 2020 20:41

Tgt Ion:104 Resp: 308981
 Ion Ratio Lower Upper
 104 100
 78 47.8 32.2 59.8

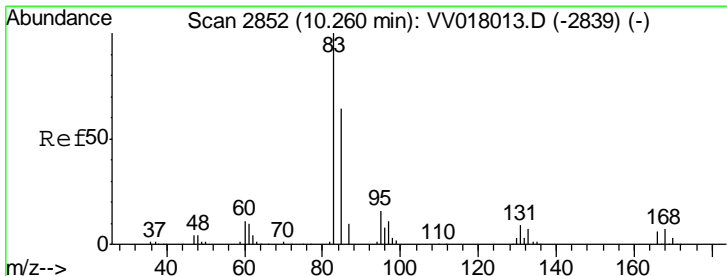
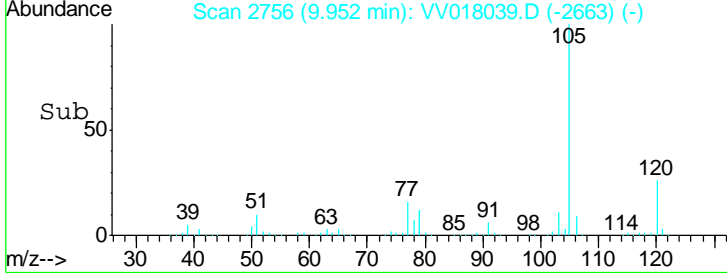
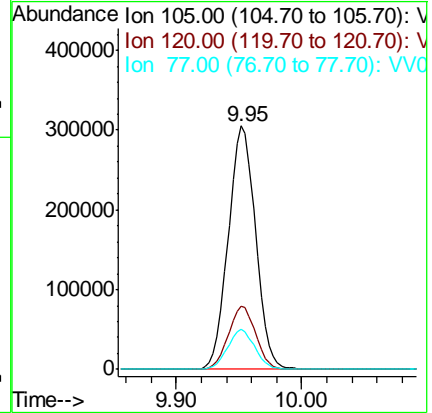
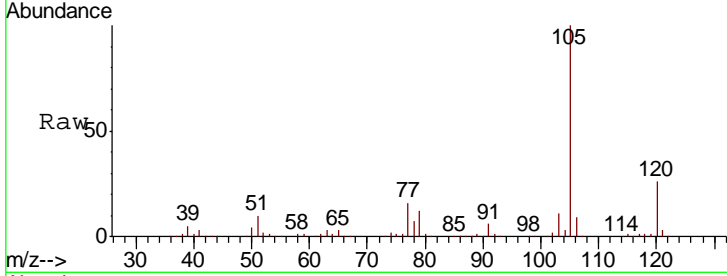




#56
 Isopropylbenzene
 Concen: 49.183 ug/L
 RT: 9.95 min Scan# 2756
 Delta R.T. 0.00 min
 Lab File: VV018039.D
 Acq: 17 Aug 2020 20:41

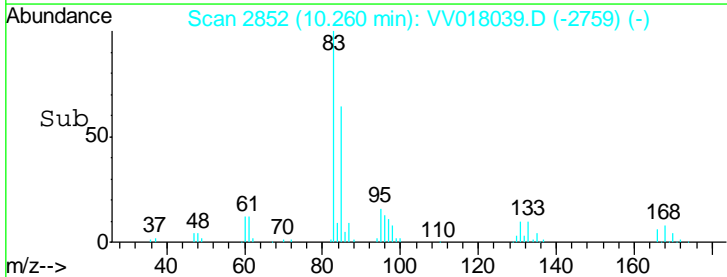
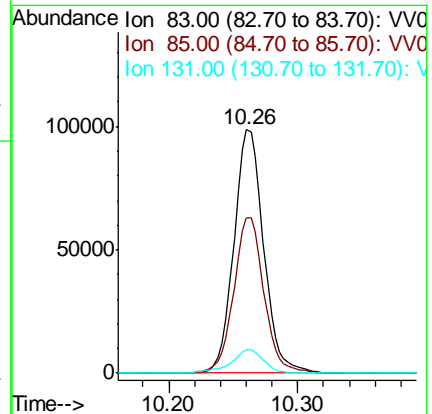
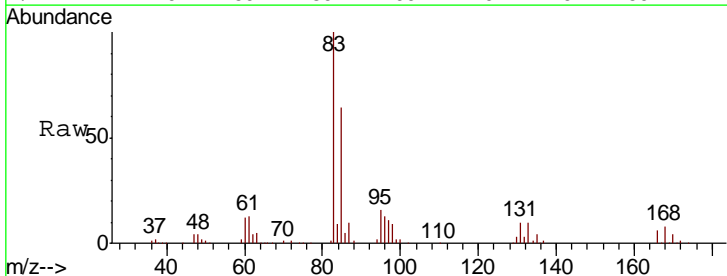
Instrument :
 MSVOA_V
 ClientSampleID :
 VSTD05072

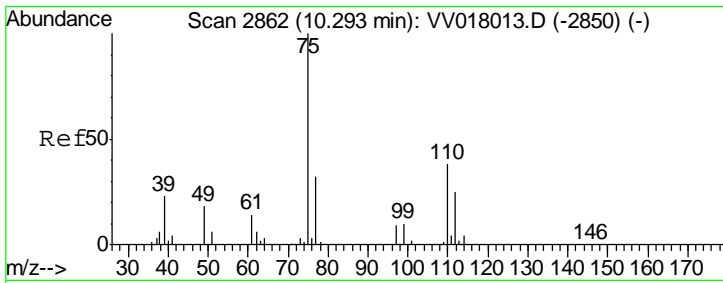
Tgt Ion	Resp	Lower	Upper
105	460914		
120	25.8	20.6	31.0
77	16.1	13.1	19.7



#58
 1,1,2,2-Tetrachloroethane
 Concen: 46.675 ug/L
 RT: 10.26 min Scan# 2852
 Delta R.T. -0.00 min
 Lab File: VV018039.D
 Acq: 17 Aug 2020 20:41

Tgt Ion	Resp	Lower	Upper
83	157678		
85	64.0	45.1	83.7
131	9.6	7.8	11.6

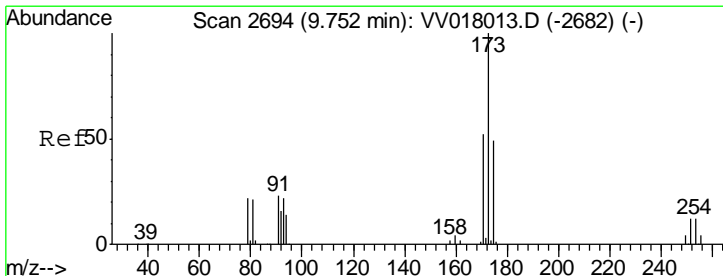
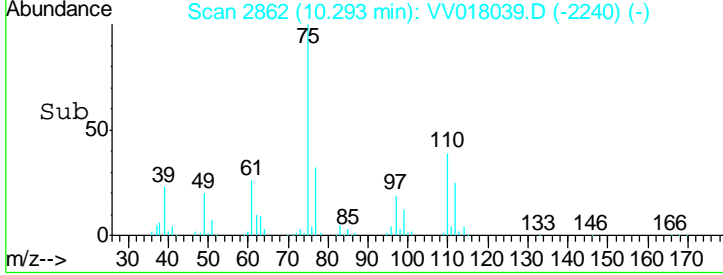
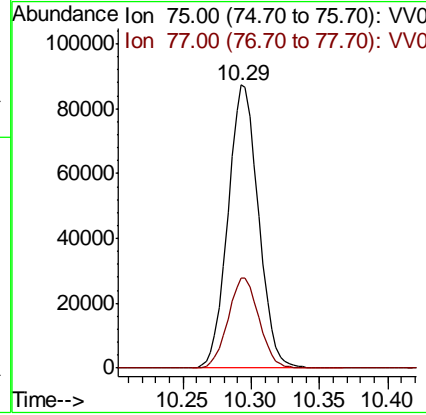
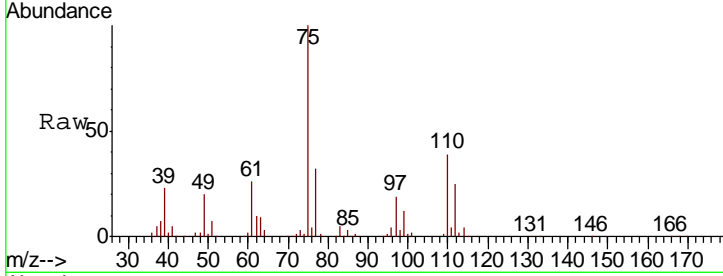




#59
 1,2,3-Trichloropropane
 Concen: 46.874 ug/L
 RT: 10.29 min Scan# 2862
 Delta R.T. -0.00 min
 Lab File: VV018039.D
 Acq: 17 Aug 2020 20:41

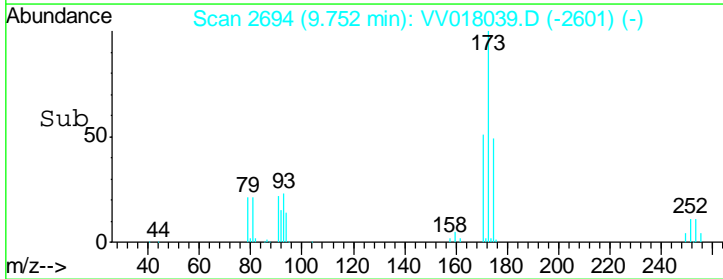
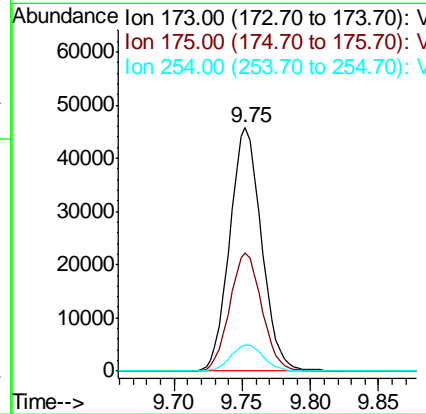
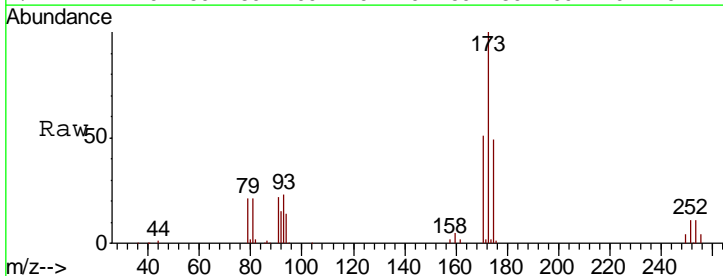
Instrument :
 MSVOA_V
 ClientSampled :
 VSTD05072

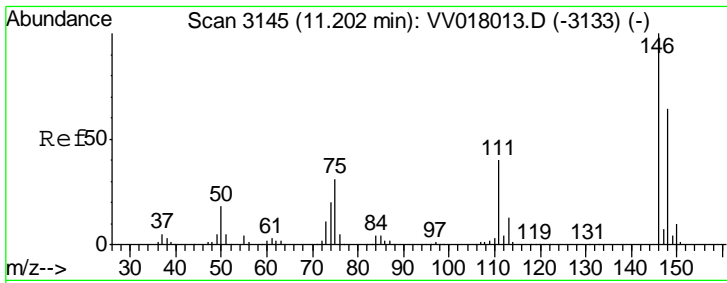
Tgt Ion	Resp	Lower	Upper
75	135611		
77	32.3	25.7	38.5



#61
 Bromoform
 Concen: 52.406 ug/L
 RT: 9.75 min Scan# 2694
 Delta R.T. -0.00 min
 Lab File: VV018039.D
 Acq: 17 Aug 2020 20:41

Tgt Ion	Resp	Lower	Upper
173	74216		
175	49.0	38.6	57.8
254	10.9	8.4	12.6

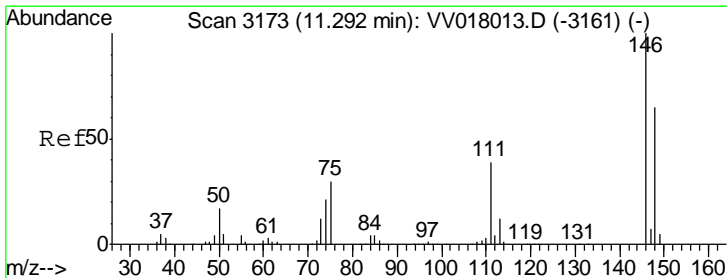
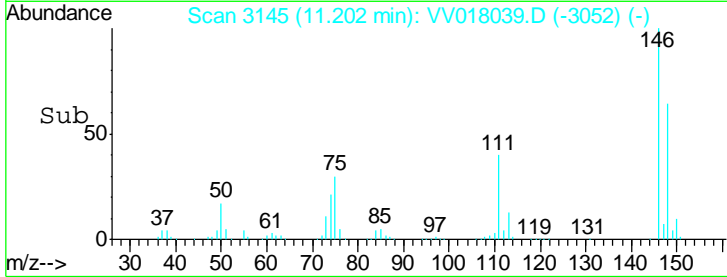
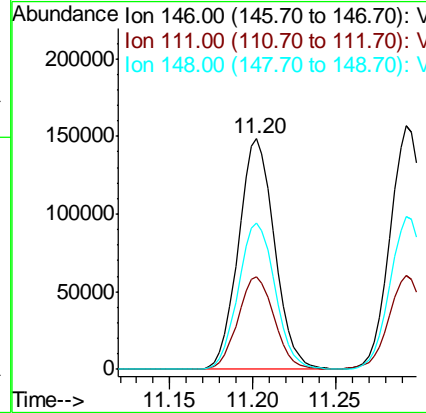
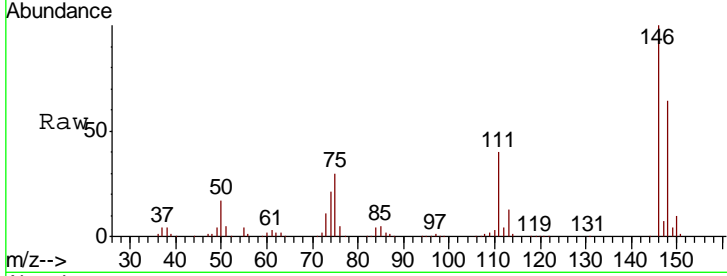




#62
 1,3-Dichlorobenzene
 Concen: 47.310 ug/L
 RT: 11.20 min Scan# 3145
 Delta R.T. -0.00 min
 Lab File: VV018039.D
 Acq: 17 Aug 2020 20:41

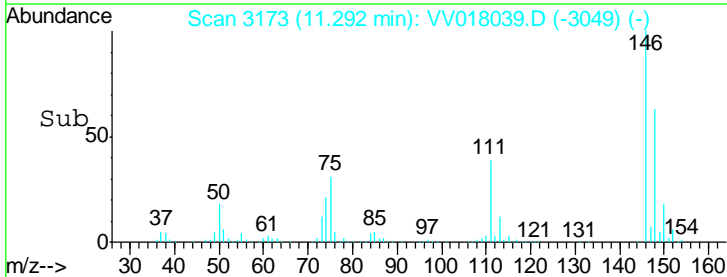
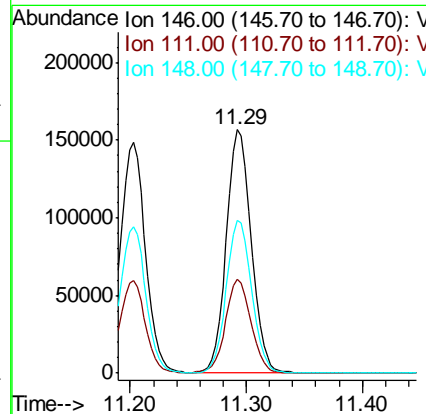
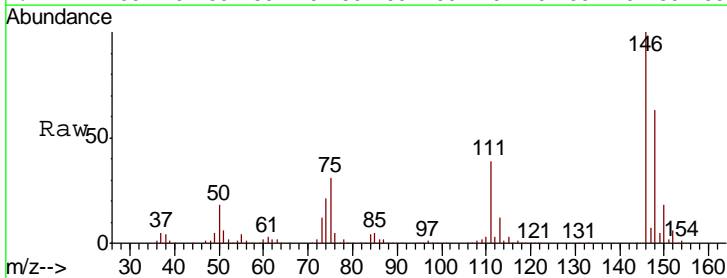
Instrument :
 MSVOA_V
 ClientSampled :
 VSTD05072

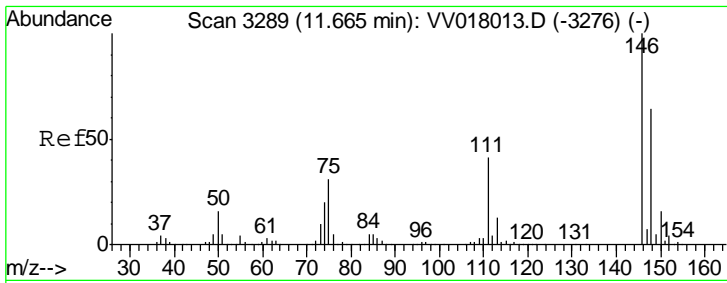
Tgt Ion	Resp	Lower	Upper
146	100		
111	40.0	28.8	53.4
148	63.6	44.9	83.5



#63
 1,4-Dichlorobenzene
 Concen: 47.611 ug/L
 RT: 11.29 min Scan# 3173
 Delta R.T. 0.00 min
 Lab File: VV018039.D
 Acq: 17 Aug 2020 20:41

Tgt Ion	Resp	Lower	Upper
146	100		
111	38.5	28.0	52.0
148	62.8	44.2	82.2

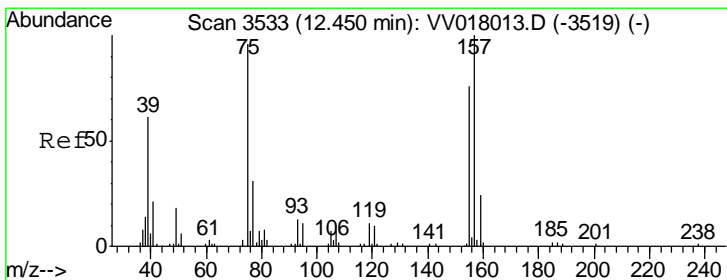
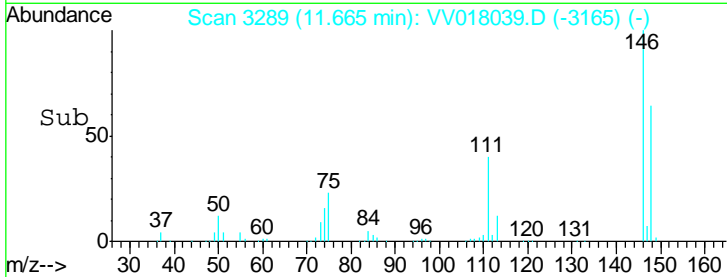
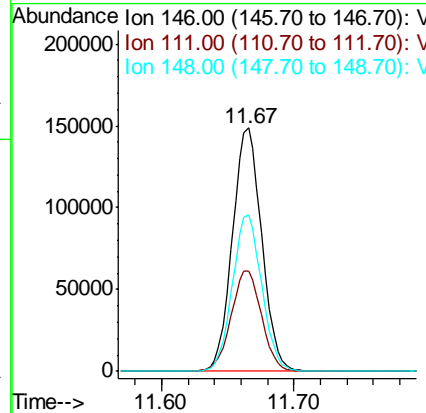
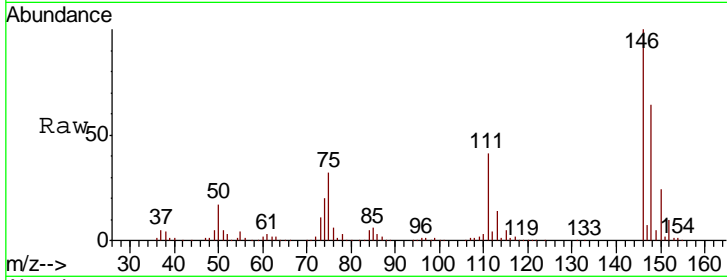




#65
 1,2-Dichlorobenzene
 Concen: 46.637 ug/L
 RT: 11.67 min Scan# 3289
 Delta R.T. -0.00 min
 Lab File: VV018039.D
 Acq: 17 Aug 2020 20:41

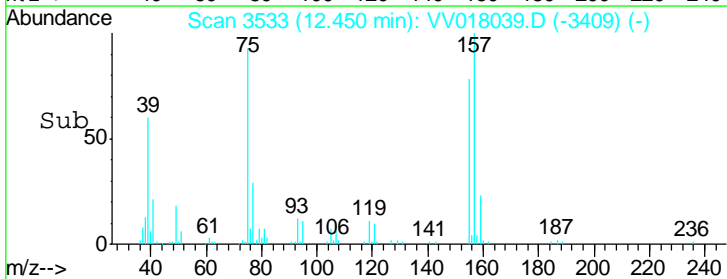
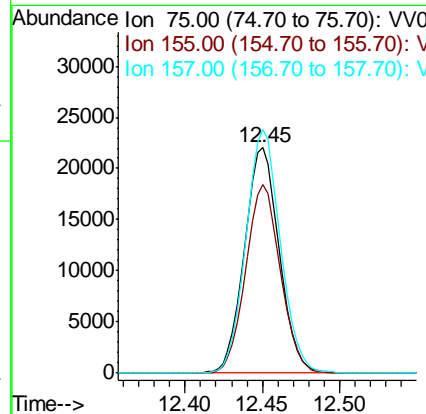
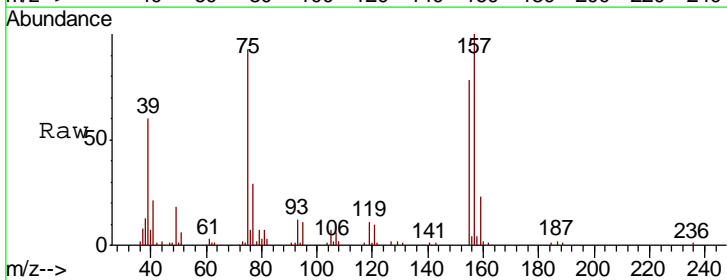
Instrument :
 MSVOA_V
 ClientSampled :
 VSTD05072

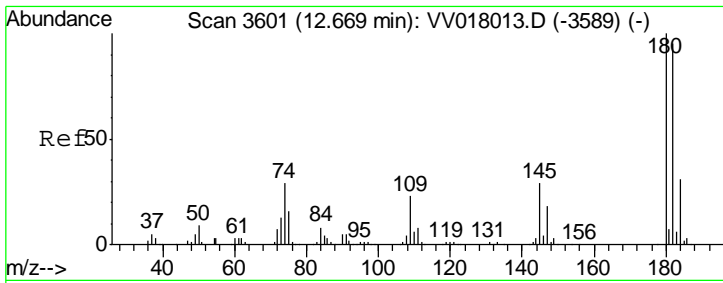
Tgt Ion	Resp	Lower	Upper
146	100		
111	41.3	34.2	51.4
148	64.2	50.6	76.0



#66
 1,2-Dibromo-3-chloropropane
 Concen: 47.692 ug/L
 RT: 12.45 min Scan# 3533
 Delta R.T. -0.00 min
 Lab File: VV018039.D
 Acq: 17 Aug 2020 20:41

Tgt Ion	Resp	Lower	Upper
75	100		
155	83.7	67.6	101.4
157	107.9	84.3	126.5

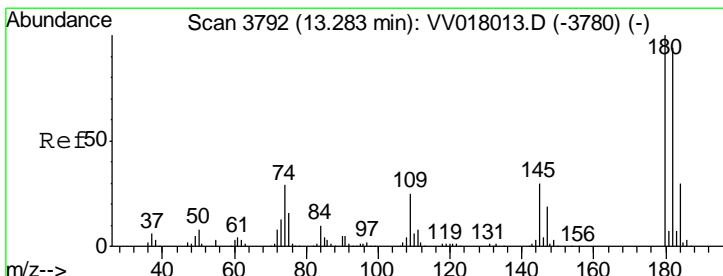
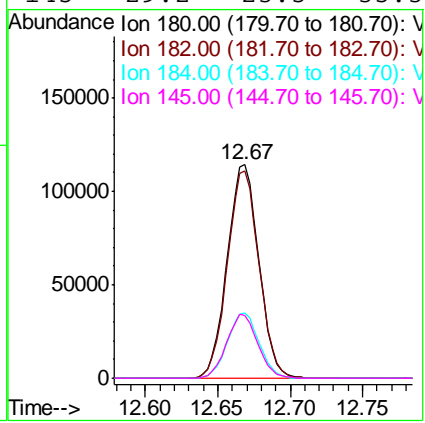
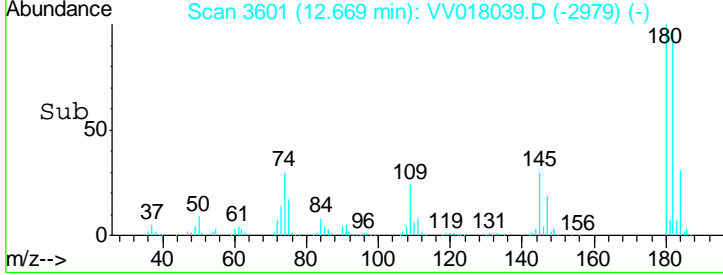
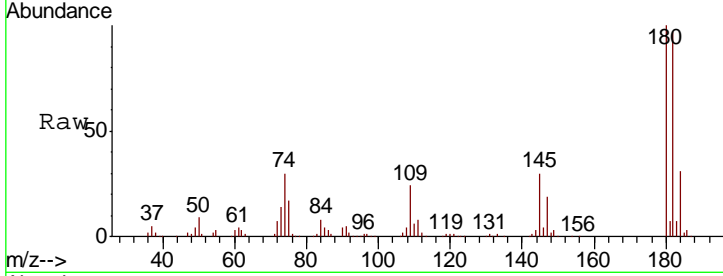




#67
 1,3,5-Trichlorobenzene
 Concen: 47.767 ug/L
 RT: 12.67 min Scan# 3601
 Delta R.T. 0.00 min
 Lab File: VV018039.D
 Acq: 17 Aug 2020 20:41

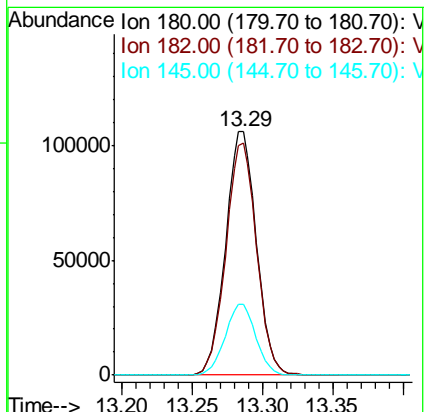
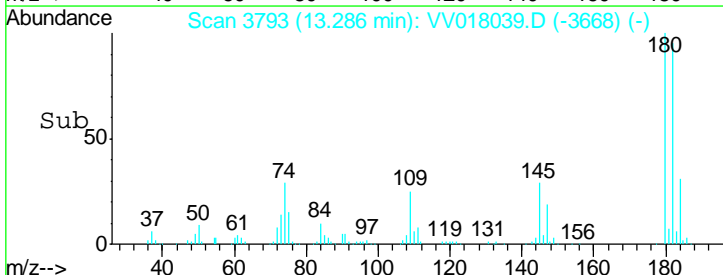
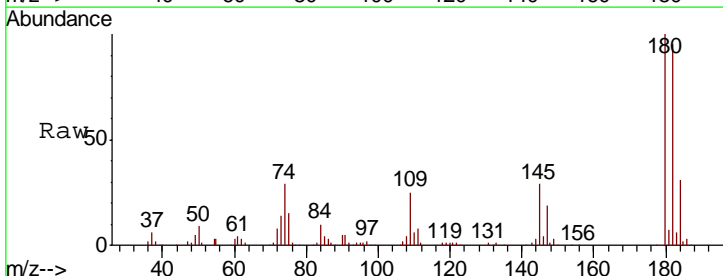
Instrument : MSVOA_V
 ClientSampled : VSTD05072

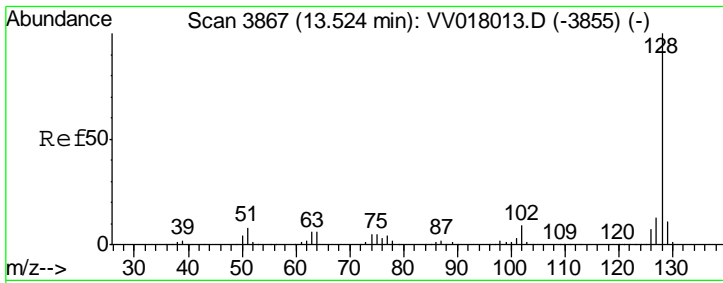
Tgt Ion	Resp	Lower	Upper
180	172698		
182	96.8	77.2	115.8
184	30.6	24.6	36.8
145	29.2	23.5	35.3



#68
 1,2,4-trichlorobenzene
 Concen: 50.795 ug/L
 RT: 13.29 min Scan# 3793
 Delta R.T. 0.00 min
 Lab File: VV018039.D
 Acq: 17 Aug 2020 20:41

Tgt Ion	Resp	Lower	Upper
180	161461		
182	95.2	76.4	114.6
145	29.0	24.0	36.0

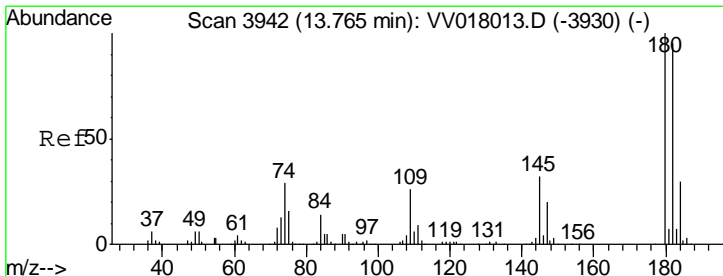
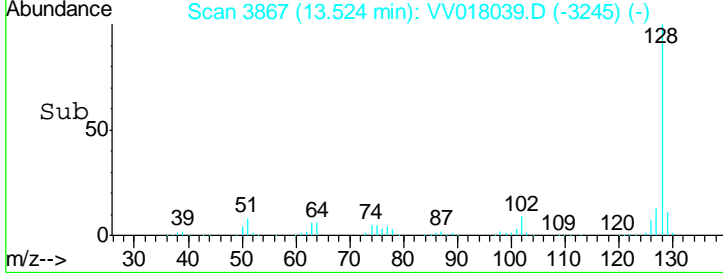
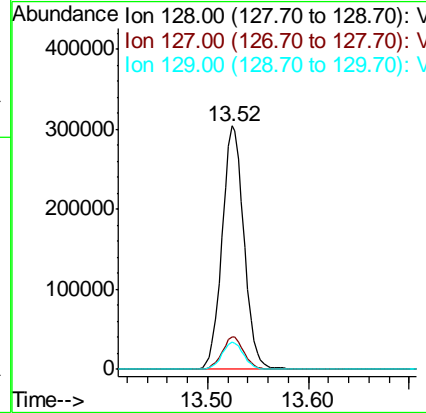
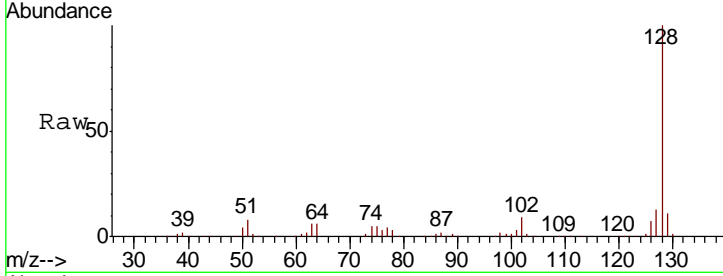




#69
 Naphthalene
 Concen: 52.468 ug/L
 RT: 13.52 min Scan# 3867
 Delta R.T. -0.00 min
 Lab File: VV018039.D
 Acq: 17 Aug 2020 20:41

Instrument : MSVOA_V
 ClientSampled : VSTD05072

Tgt Ion	Resp	Lower	Upper
128	459686		
127	13.2	10.6	15.8
129	11.1	8.7	13.1



#70
 1,2,3-Trichlorobenzene
 Concen: 51.792 ug/L
 RT: 13.77 min Scan# 3943
 Delta R.T. 0.00 min
 Lab File: VV018039.D
 Acq: 17 Aug 2020 20:41

Tgt Ion	Resp	Lower	Upper
180	167420		
182	96.1	76.5	114.7
145	32.0	26.0	39.0

