

Data Path : Z:\VOASRV\HPCHEM1\MSVOA V\DATA\VV081720\
 Data File : VV018029.D
 Acq On : 17 Aug 2020 16:46
 Operator : SY/MD
 Sample : L3665-17DL 40X
 Misc : 5.0mL/MSVOA V/WATER
 ALS Vial : 19 Sample Multiplier: 1

Instrument :
 MSVOA_V
 ClientSampled :
 F4L37DL

Integration Parameters: LSCINT.P

Integrator: RTE
 Smoothing : OFF
 Sampling : 1
 Start Thrs: 0.2
 Stop Thrs : 0

Filtering: 5
 Min Area: 0 % of largest Peak
 Max Peaks: 100
 Peak Location: TOP

If leading or trailing edge < 100 prefer < Baseline drop else tangent >
 Peak separation: 5

Method : Z:\VOASRV\HPCHEM1\MSVOA_V\METHOD\SOMVLM081120WMA.M
 Title : VOC Analysis

Signal : TIC

peak #	R.T. min	first scan	max scan	last scan	PK TY	peak height	corr. area	corr. % max.	% of total
1	1.315	63	70	83	rVB	151075	152459	15.28%	1.803%
2	1.579	144	152	164	rBV	121786	138252	13.86%	1.635%
3	2.122	311	321	351	rVB	249657	386009	38.69%	4.565%
4	2.312	373	380	387	rVB2	2016	3034	0.30%	0.036%
5	2.524	438	446	456	rVB2	7042	11518	1.15%	0.136%
6	2.569	456	460	463	rBV2	204	197	0.02%	0.002%
7	2.737	505	512	514	rBV2	244	278	0.03%	0.003%
8	2.753	514	517	518	rVV	189	85	0.01%	0.001%
9	2.782	518	526	540	rVV	5248	9122	0.91%	0.108%
10	2.849	545	547	550	rVB3	259	150	0.02%	0.002%
11	2.872	550	554	555	rBV	97	59	0.01%	0.001%
12	2.926	569	571	574	rBV2	119	63	0.01%	0.001%
13	3.016	596	599	601	rBV2	183	99	0.01%	0.001%
14	3.216	654	661	662	rBV	138	120	0.01%	0.001%
15	3.238	665	668	670	rBV	99	72	0.01%	0.001%
16	3.383	711	713	714	rBV	206	97	0.01%	0.001%
17	3.486	741	745	747	rBV2	119	99	0.01%	0.001%
18	3.521	753	756	759	rBV2	111	76	0.01%	0.001%
19	3.540	759	762	767	rVB2	131	102	0.01%	0.001%
20	3.582	771	775	777	rBV2	80	69	0.01%	0.001%
21	3.666	797	801	808	rVB2	100	108	0.01%	0.001%
22	3.701	808	812	815	rBV2	115	103	0.01%	0.001%
23	3.820	845	849	852	rVV2	115	88	0.01%	0.001%
24	3.936	866	885	916	rBV2	269538	797115	79.89%	9.427%
25	4.376	1006	1022	1055	rBV	158297	393093	39.40%	4.649%
26	4.537	1070	1072	1074	rVB	315	107	0.01%	0.001%
27	4.550	1074	1076	1079	rVB2	243	140	0.01%	0.002%
28	4.569	1079	1082	1084	rBV2	231	136	0.01%	0.002%
29	4.589	1086	1088	1091	rBV	212	122	0.01%	0.001%
30	4.618	1095	1097	1100	rVB2	135	62	0.01%	0.001%
31	4.640	1100	1104	1107	rBV2	316	195	0.02%	0.002%
32	4.669	1111	1113	1118	rVB2	89	77	0.01%	0.001%
33	4.698	1118	1122	1125	rBV2	338	242	0.02%	0.003%
34	4.833	1161	1164	1166	rBV	82	59	0.01%	0.001%

Data Path : Z:\VOASRV\HPCHEM1\MSVOA V\DATA\VV081720\
 Data File : VV018029.D
 Acq On : 17 Aug 2020 16:46
 Operator : SY/MD
 Sample : L3665-17DL 40X
 Misc : 5.0mL/MSVOA V/WATER
 ALS Vial : 19 Sample Multiplier: 1

Instrument :
 MSVOA_V
 ClientSampleId :
 F4L37DL

Integration Parameters: LSCINT.P

Integrator: RTE
 Smoothing : OFF
 Sampling : 1
 Start Thrs: 0.2
 Stop Thrs : 0

Filtering: 5
 Min Area: 0 % of largest Peak
 Max Peaks: 100
 Peak Location: TOP

If leading or trailing edge < 100 prefer < Baseline drop else tangent >
 Peak separation: 5

Method : Z:\VOASRV\HPCHEM1\MSVOA_V\METHOD\SOMVLM081120WMA.M
 Title : VOC Analysis

35	4.894	1174	1183	1188	rBV2	226	365	0.04%	0.004%
36	4.920	1188	1191	1194	rBV	119	85	0.01%	0.001%
37	4.965	1202	1205	1210	rBV2	171	108	0.01%	0.001%
38	4.994	1210	1214	1221	rVB2	133	122	0.01%	0.001%
39	5.071	1221	1238	1276	rBV2	387609	997804	100.00%	11.800%
40	5.344	1320	1323	1325	rBV2	225	173	0.02%	0.002%
41	5.392	1336	1338	1345	rVB2	254	241	0.02%	0.003%
42	5.428	1345	1349	1351	rBV2	121	80	0.01%	0.001%
43	5.450	1354	1356	1359	rBV2	151	64	0.01%	0.001%
44	5.518	1374	1377	1380	rBV	168	100	0.01%	0.001%
45	5.550	1384	1387	1391	rVB2	221	168	0.02%	0.002%
46	5.598	1397	1402	1403	rBV2	82	62	0.01%	0.001%
47	5.640	1403	1415	1444	rBV	324787	642321	64.37%	7.596%
48	5.884	1488	1491	1494	rVB2	207	138	0.01%	0.002%
49	5.939	1494	1508	1534	rBV4	74896	163712	16.41%	1.936%
50	6.093	1542	1556	1587	rBV	221928	449705	45.07%	5.318%
51	6.289	1613	1617	1620	rBV2	201	153	0.02%	0.002%
52	6.344	1629	1634	1636	rBV	101	93	0.01%	0.001%
53	6.354	1636	1637	1640	rVB	124	71	0.01%	0.001%
54	6.405	1650	1653	1656	rBV2	197	124	0.01%	0.001%
55	6.431	1657	1661	1664	rVV3	200	152	0.02%	0.002%
56	6.450	1664	1667	1671	rVB2	103	75	0.01%	0.001%
57	6.470	1671	1673	1677	rBV2	88	64	0.01%	0.001%
58	6.505	1682	1684	1690	rVB	167	142	0.01%	0.002%
59	6.537	1690	1694	1696	rBV2	103	89	0.01%	0.001%
60	6.698	1741	1744	1749	rBV2	82	64	0.01%	0.001%
61	6.817	1779	1781	1784	rBV	163	105	0.01%	0.001%
62	6.897	1804	1806	1808	rVB2	164	73	0.01%	0.001%
63	7.006	1828	1840	1866	rBV	118841	215554	21.60%	2.549%
64	7.206	1901	1902	1907	rVB	257	124	0.01%	0.001%
65	7.238	1908	1912	1915	rBV2	235	148	0.01%	0.002%
66	7.338	1931	1943	1964	rBV	454058	775891	77.76%	9.176%
67	7.643	2027	2038	2061	rBV	84946	146398	14.67%	1.731%
68	7.814	2090	2091	2094	rVB2	192	78	0.01%	0.001%
69	7.839	2094	2099	2104	rBV3	345	349	0.03%	0.004%
70	7.868	2105	2108	2111	rBV2	130	87	0.01%	0.001%
71	7.939	2127	2130	2132	rBV	145	71	0.01%	0.001%

Data Path : Z:\VOASRV\HPCHEM1\MSVOA V\DATA\VV081720\
 Data File : VV018029.D
 Acq On : 17 Aug 2020 16:46
 Operator : SY/MD
 Sample : L3665-17DL 40X
 Misc : 5.0mL/MSVOA V/WATER
 ALS Vial : 19 Sample Multiplier: 1

Instrument :
 MSVOA_V
 ClientSampleId :
 F4L37DL

Integration Parameters: LSCINT.P

Integrator: RTE
 Smoothing : OFF Filtering: 5
 Sampling : 1 Min Area: 0 % of largest Peak
 Start Thrs: 0.2 Max Peaks: 100
 Stop Thrs : 0 Peak Location: TOP

If leading or trailing edge < 100 prefer < Baseline drop else tangent >
 Peak separation: 5

Method : Z:\VOASRV\HPCHEM1\MSVOA_V\METHOD\SOMVLM081120WMA.M
 Title : VOC Analysis

72	7.955	2132	2135	2137	rVV2	166	113	0.01%	0.001%
73	8.000	2140	2149	2161	rVV3	6520	10397	1.04%	0.123%
74	8.074	2169	2172	2173	rBV	259	126	0.01%	0.001%
75	8.109	2173	2183	2224	rVV2	180880	362199	36.30%	4.283%
76	8.370	2262	2264	2274	rBV2	155	236	0.02%	0.003%
77	8.441	2279	2286	2295	rBV2	914	1612	0.16%	0.019%
78	8.531	2311	2314	2318	rBV	144	103	0.01%	0.001%
79	8.688	2359	2363	2367	rVB	147	120	0.01%	0.001%
80	8.720	2369	2373	2382	rVV	5506	3598	0.36%	0.043%
81	8.781	2389	2392	2396	rBV2	104	74	0.01%	0.001%
82	8.871	2408	2420	2448	rBV	494695	805829	80.76%	9.530%
83	9.122	2496	2498	2500	rBV	108	65	0.01%	0.001%
84	9.344	2564	2567	2572	rVB2	209	131	0.01%	0.002%
85	9.572	2634	2638	2641	rBV2	396	306	0.03%	0.004%
86	9.637	2655	2658	2661	rBV2	152	120	0.01%	0.001%
87	9.839	2718	2721	2724	rVB	214	120	0.01%	0.001%
88	9.952	2752	2756	2757	rBV	469	311	0.03%	0.004%
89	10.045	2781	2785	2789	rBV	153	145	0.01%	0.002%
90	10.238	2832	2845	2865	rBV	275564	424279	42.52%	5.017%
91	10.566	2942	2947	2951	rBV	458	553	0.06%	0.007%
92	10.939	3059	3063	3072	rVB2	529	719	0.07%	0.009%
93	11.209	3141	3147	3153	rVB4	1651	2083	0.21%	0.025%
94	11.270	3154	3166	3195	rBV	506463	782122	78.38%	9.249%
95	11.521	3242	3244	3246	rBB2	185	73	0.01%	0.001%
96	11.646	3271	3283	3305	rBV	475421	750186	75.18%	8.872%
97	12.672	3597	3602	3612	rVB2	2287	2917	0.29%	0.034%
98	13.289	3787	3794	3804	rVB3	4589	6912	0.69%	0.082%
99	13.530	3864	3869	3887	rVB2	4055	6533	0.65%	0.077%
100	13.771	3937	3944	3954	rVB5	3584	5282	0.53%	0.062%

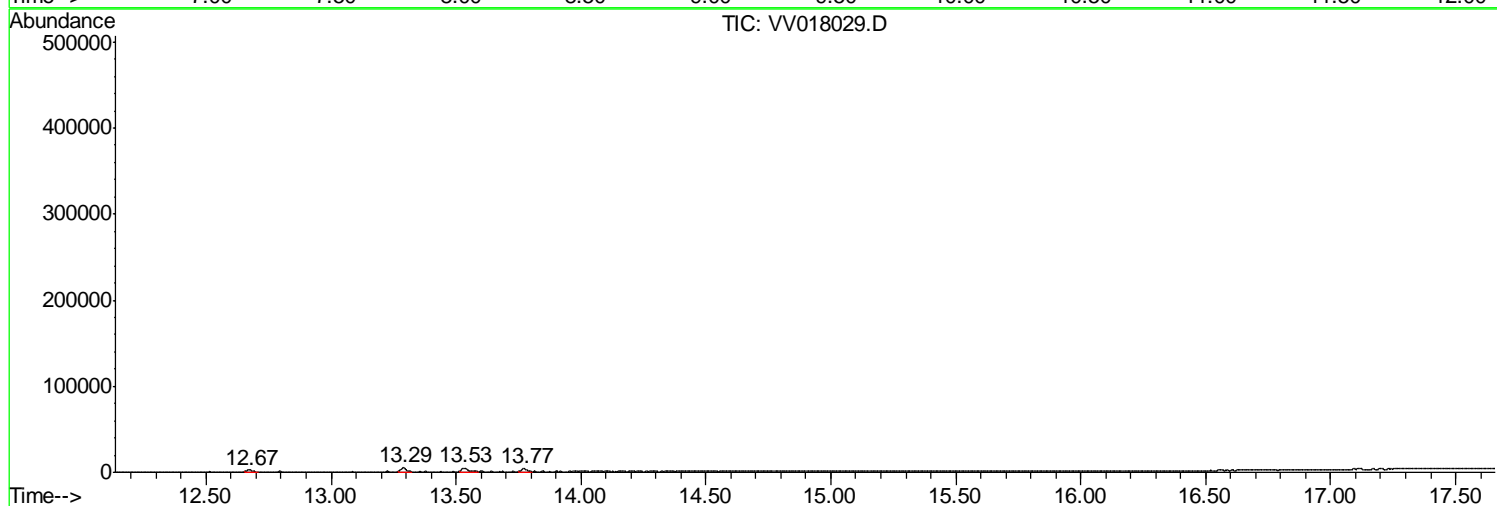
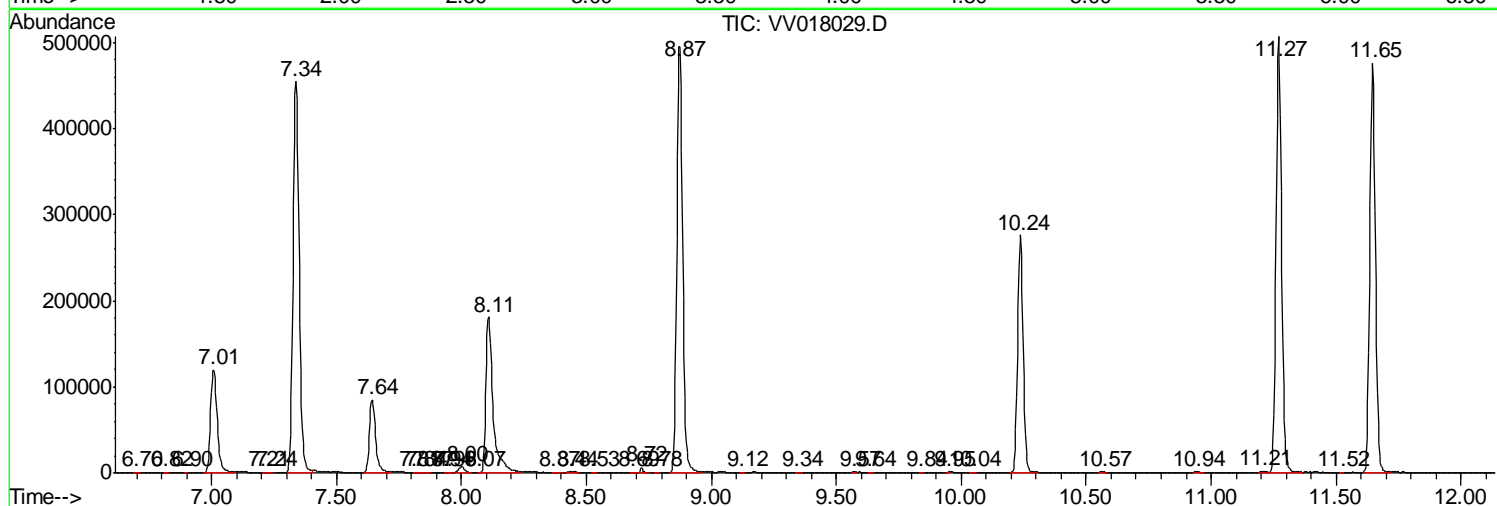
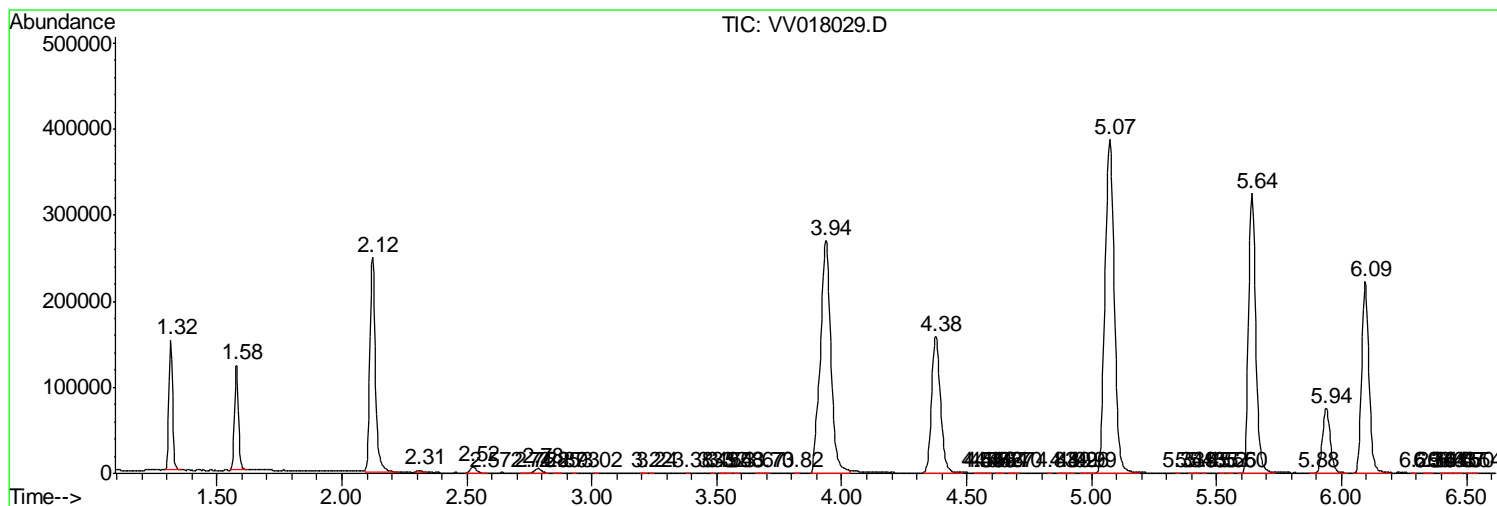
Sum of corrected areas: 8456024

Data Path : Z:\VOASRV\HPCHEM1\MSVOA V\DATA\VV081720\
 Data File : VV018029.D
 Acq On : 17 Aug 2020 16:46
 Operator : SY/MD
 Sample : L3665-17DL 40X
 Misc : 5.0mL/MSVOA V/WATER
 ALS Vial : 19 Sample Multiplier: 1

Instrument :
 MSVOA_V
Client Sampled :
 F4L37DL

Quant Method : Z:\VOASRV\HPCHEM1\MSVOA_V\METHOD\SOMVLM081120WMA.M
 Quant Title : VOC Analysis

TIC Library : C:\DATABASE\NIST11.L
 TIC Integration Parameters: LSCINT.P



Data Path : Z:\VOASRV\HPCHEM1\MSVOA_V\DATA\VV081720\
Data File : VV018029.D
Acq On : 17 Aug 2020 16:46
Operator : SY/MD
Sample : L3665-17DL 40X
Misc : 5.0mL/MSVOA_V/WATER
ALS Vial : 19 Sample Multiplier: 1

Instrument :
MSVOA_V
ClientSampleId :
F4L37DL

Quant Method : Z:\VOASRV\HPCHEM1\MSVOA_V\METHOD\SOMVLM081120WMA.M
Quant Title : VOC Analysis

TIC Library : C:\DATABASE\NIST11.L
TIC Integration Parameters: LSCINT.P

No Library Search Compounds Detected

Data Path : Z:\VOASRV\HPCHEM1\MSVOA_V\DATA\VV081720\
Data File : VV018029.D
Acq On : 17 Aug 2020 16:46
Operator : SY/MD
Sample : L3665-17DL 40X
Misc : 5.0mL/MSVOA_V/WATER
ALS Vial : 19 Sample Multiplier: 1

Instrument :
MSVOA_V
ClientSampleId :
F4L37DL

Quant Method : Z:\VOASRV\HPCHEM1\MSVOA_V\METHOD\SOMVLM081120WMA.M
Quant Title : VOC Analysis

TIC Library : C:\DATABASE\NIST11.L
TIC Integration Parameters: LSCINT.P

TIC Top Hit name	RT	EstConc	Units	Response	--Internal Standard--			
					#	RT	Resp	Conc
