

Data Path : Z:\voasrv\HPCHEM1\MSVOA_V\Data\VW081721\
 Data File : VW021847.D
 Acq On : 18 Aug 2021 04:35
 Operator : SY/MD
 Sample : M3422-23
 Misc : 5.0mL/MSVOA_V/WATER
 ALS Vial : 42 Sample Multiplier: 1

Instrument :
 MSVOA_V
 ClientSampled :

Quant Time: Aug 18 05:43:58 2021
 Quant Method : Z:\voasrv\HPCHEM1\MSVOA_V\Method\SFAMVLM081621WMA.M
 Quant Title : VOC Analysis
 QLast Update : Wed Aug 18 03:33:12 2021
 Response via : Initial Calibration

Compound	R.T.	QIon	Response	Conc	Units	Dev(Min)

Internal Standards						
1) 1,4-Difluorobenzene	5.619	114	407892	50.000	ug/L	0.00
28) Chlorobenzene-d5	8.854	117	377396	50.000	ug/L	0.00
58) 1,4-Dichlorobenzene-d4	11.252	152	181441	50.000	ug/L	0.00
System Monitoring Compounds						
4) Vinyl Chloride-d3	1.304	65	107153	33.603	ug/L	0.00
Spiked Amount	50.000	Range 60 - 135	Recovery =	67.200%		
7) Chloroethane-d5	1.558	69	93141	38.707	ug/L	0.00
Spiked Amount	50.000	Range 70 - 130	Recovery =	77.420%		
11) 1,1-Dichloroethene-d2	2.105	63	123081	24.248	ug/L	0.00
Spiked Amount	50.000	Range 60 - 125	Recovery =	48.500%#		
21) 2-Butanone-d5	3.873	46	212668	107.234	ug/L	0.00
Spiked Amount	100.000	Range 40 - 130	Recovery =	107.230%		
24) Chloroform-d	4.352	84	242982	43.982	ug/L	0.00
Spiked Amount	50.000	Range 70 - 125	Recovery =	87.960%		
26) 1,2-Dichloroethane-d4	5.034	65	150945	47.499	ug/L	0.00
Spiked Amount	50.000	Range 70 - 125	Recovery =	95.000%		
32) Benzene-d6	5.050	84	479345	44.169	ug/L	0.00
Spiked Amount	50.000	Range 70 - 125	Recovery =	88.340%		
36) 1,2-Dichloropropane-d6	6.072	67	163296	48.318	ug/L	0.00
Spiked Amount	50.000	Range 70 - 120	Recovery =	96.640%		
41) Toluene-d8	7.317	98	417700	41.641	ug/L	0.00
Spiked Amount	50.000	Range 80 - 120	Recovery =	83.280%		
43) trans-1,3-Dichloroprop...	7.625	79	67362	40.500	ug/L	0.00
Spiked Amount	50.000	Range 60 - 125	Recovery =	81.000%		
47) 2-Hexanone-d5	8.088	63	111801	100.934	ug/L	0.00
Spiked Amount	100.000	Range 45 - 130	Recovery =	100.930%		
56) 1,1,2,2-Tetrachloroeth...	10.217	84	210838	50.343	ug/L	0.00
Spiked Amount	50.000	Range 65 - 120	Recovery =	100.680%		
66) 1,2-Dichlorobenzene-d4	11.625	152	184334	49.091	ug/L	0.00
Spiked Amount	50.000	Range 80 - 120	Recovery =	98.180%		

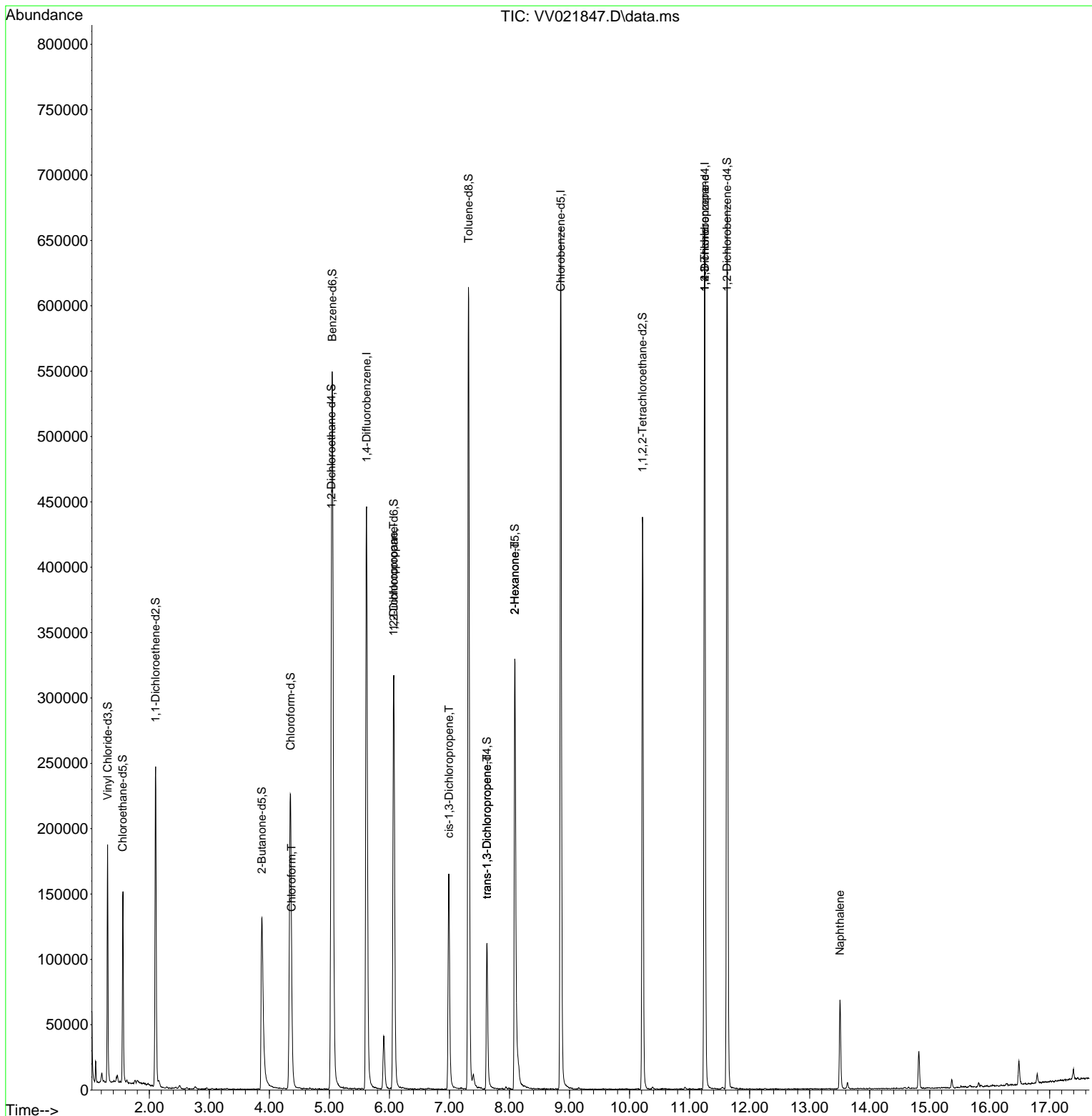
Target Compounds						Qvalue
25) Chloroform	4.371	83	5050	0.932	ug/L	84
37) 1,2-Dichloropropane	6.069	63	16985	5.776	ug/L #	86
39) cis-1,3-Dichloropropene	6.992	75	4157	0.893	ug/L #	74
44) trans-1,3-Dichloropropene	7.625	75	2802	0.639	ug/L	97
48) 2-Hexanone	8.088	43	13153	4.198	ug/L #	74
61) 1,2,3-Trichloropropane	11.249	75	19502	5.816	ug/L #	63
71) Naphthalene	13.506	128	55575	5.342	ug/L	99

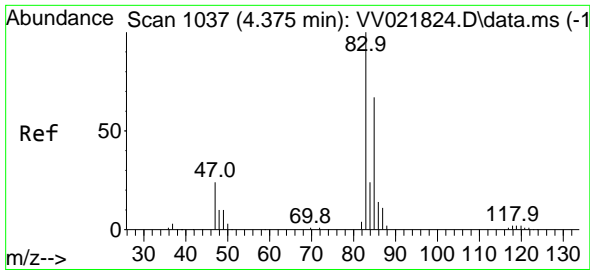
(#) = qualifier out of range (m) = manual integration (+) = signals summed

Data Path : Z:\voasrv\HPCHEM1\MSVOA_V\Data\VV081721\
 Data File : VV021847.D
 Acq On : 18 Aug 2021 04:35
 Operator : SY/MD
 Sample : M3422-23
 Misc : 5.0mL/MSVOA_V/WATER
 ALS Vial : 42 Sample Multiplier: 1

Instrument :
 MSVOA_V
 ClientSampled :

Quant Time: Aug 18 05:43:58 2021
 Quant Method : Z:\voasrv\HPCHEM1\MSVOA_V\Method\SFAMVLM081621WMA.M
 Quant Title : VOC Analysis
 QLast Update : Wed Aug 18 03:33:12 2021
 Response via : Initial Calibration

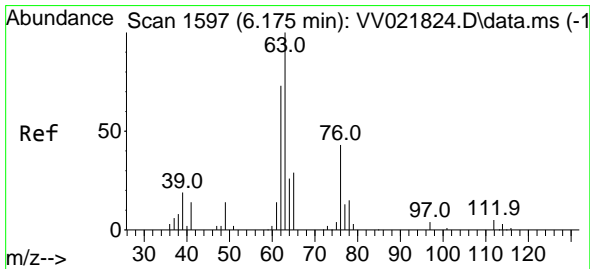
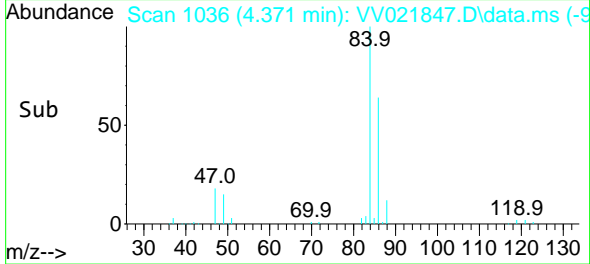
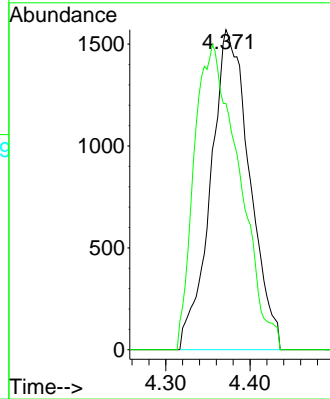
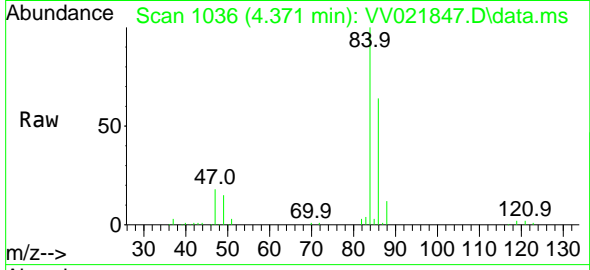




#25
 Chloroform
 Concen: 0.932 ug/L
 RT: 4.371 min Scan# 1036
 Delta R.T. -0.003 min
 Lab File: VV021847.D
 Acq: 18 Aug 2021 04:35

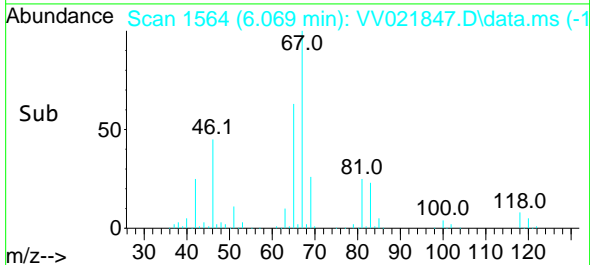
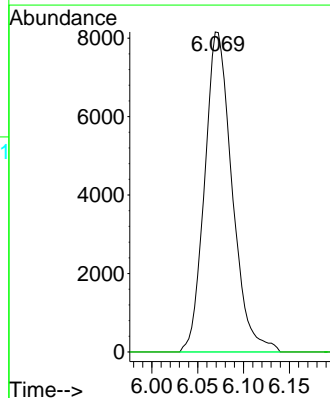
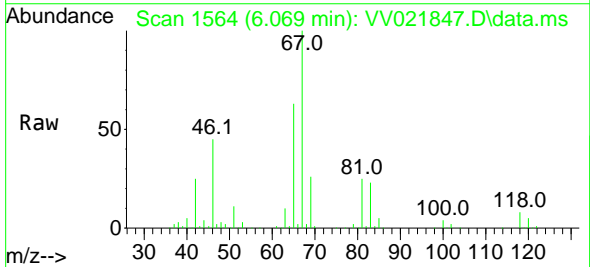
Instrument :
 MSVOA_V
 ClientSampled :

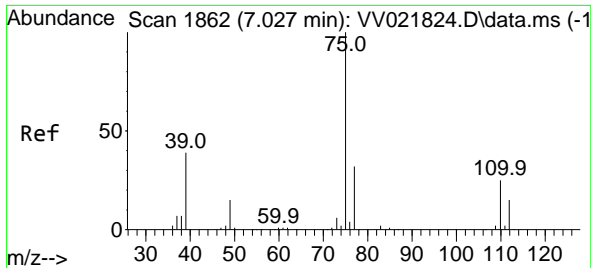
Tgt Ion: 83 Resp: 5050
 Ion Ratio Lower Upper
 83 100
 85 76.9 44.8 83.2



#37
 1,2-Dichloropropane
 Concen: 5.776 ug/L
 RT: 6.069 min Scan# 1564
 Delta R.T. -0.106 min
 Lab File: VV021847.D
 Acq: 18 Aug 2021 04:35

Tgt Ion: 63 Resp: 16985
 Ion Ratio Lower Upper
 63 100
 112 0.0 3.8 5.6#

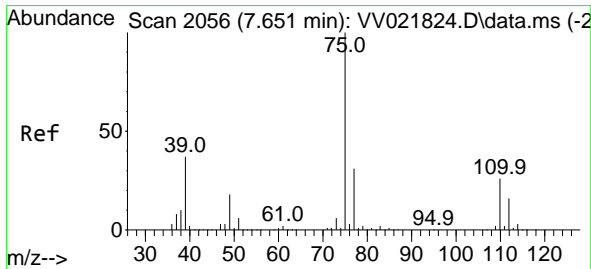
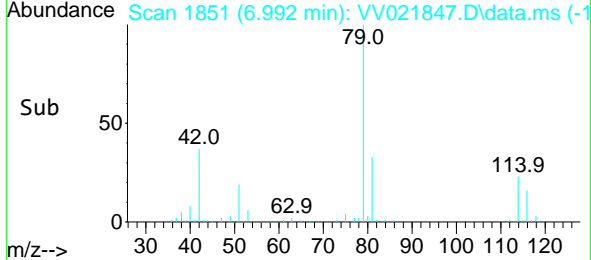
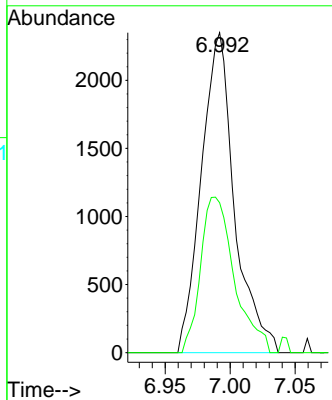
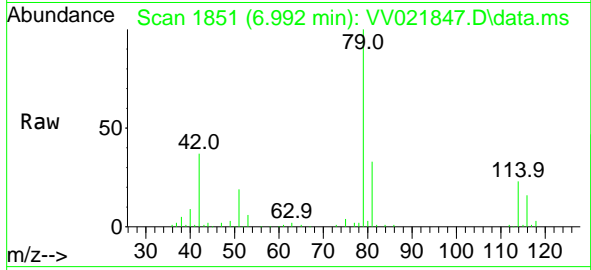




#39
 cis-1,3-Dichloropropene
 Concen: 0.893 ug/L
 RT: 6.992 min Scan# 1851
 Delta R.T. -0.035 min
 Lab File: VV021847.D
 Acq: 18 Aug 2021 04:35

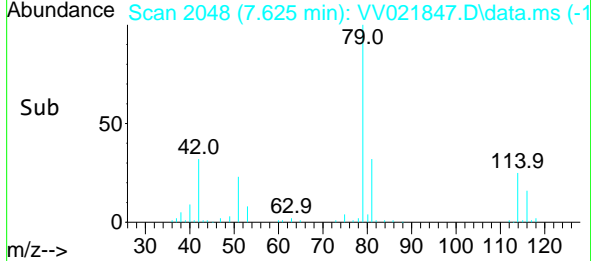
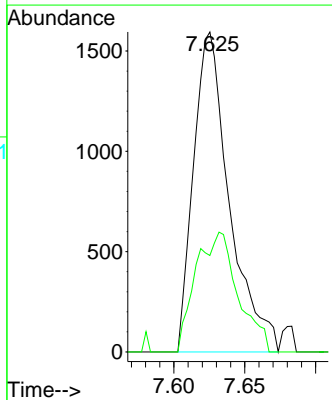
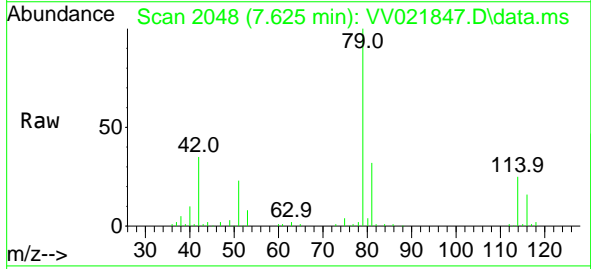
Instrument :
 MSVOA_V
 ClientSampled :

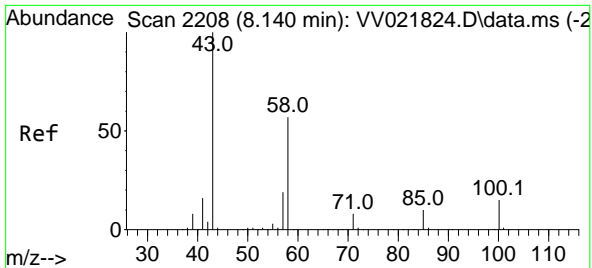
Tgt Ion: 75 Resp: 4157
 Ion Ratio Lower Upper
 75 100
 77 46.9 22.5 41.9#



#44
 trans-1,3-Dichloropropene
 Concen: 0.639 ug/L
 RT: 7.625 min Scan# 2048
 Delta R.T. -0.026 min
 Lab File: VV021847.D
 Acq: 18 Aug 2021 04:35

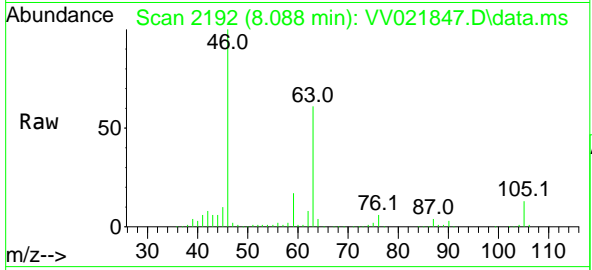
Tgt Ion: 75 Resp: 2802
 Ion Ratio Lower Upper
 75 100
 77 30.2 22.2 41.2





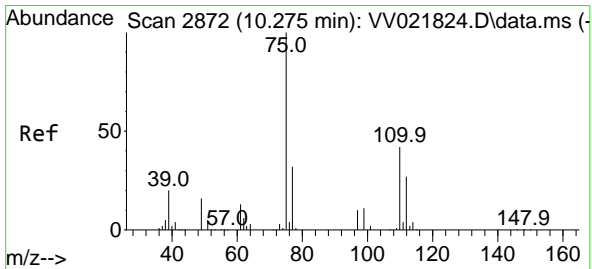
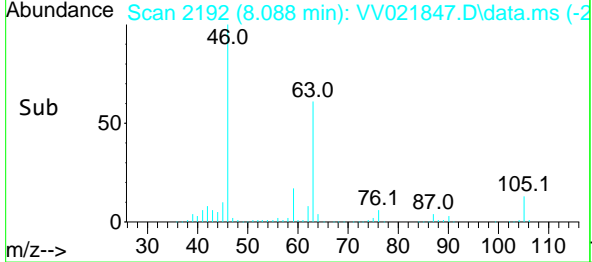
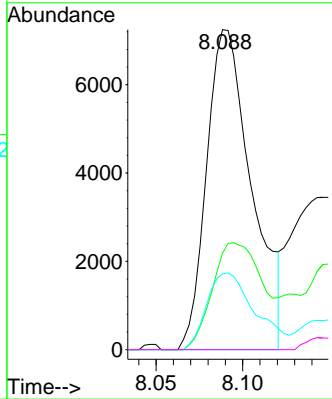
#48
 2-Hexanone
 Concen: 4.198 ug/L
 RT: 8.088 min Scan# 2192
 Delta R.T. -0.051 min
 Lab File: VV021847.D
 Acq: 18 Aug 2021 04:35

Instrument :
 MSVOA_V
 ClientSampled :

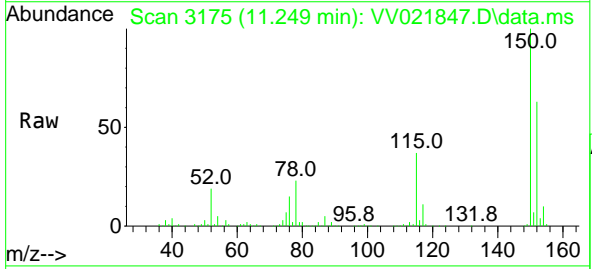


Tgt Ion: 43 Resp: 13153

Ion	Ratio	Lower	Upper
43	100		
58	36.1	45.4	68.2#
57	25.9	15.3	22.9#
100	0.0	11.0	16.6#

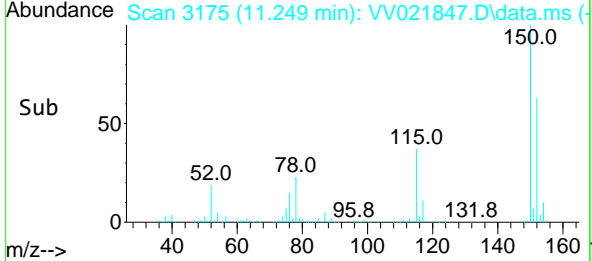
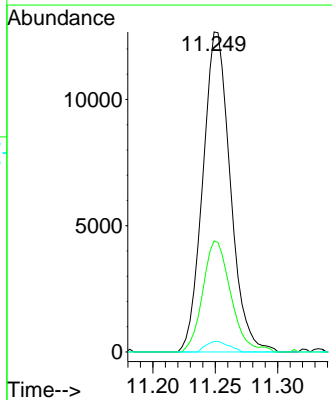


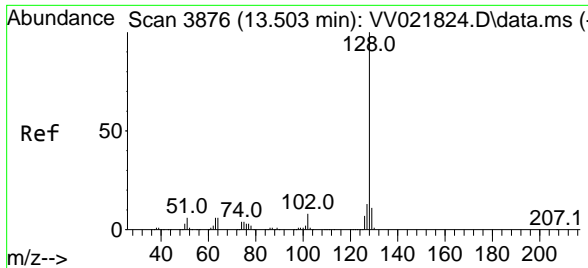
#61
 1,2,3-Trichloropropane
 Concen: 5.816 ug/L
 RT: 11.249 min Scan# 3175
 Delta R.T. 0.974 min
 Lab File: VV021847.D
 Acq: 18 Aug 2021 04:35



Tgt Ion: 75 Resp: 19502

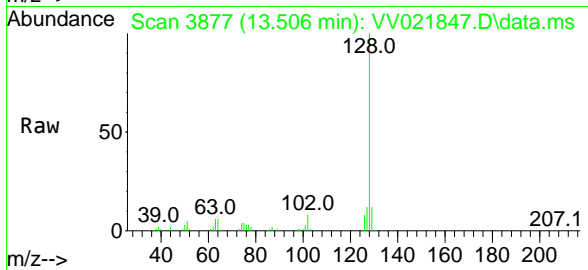
Ion	Ratio	Lower	Upper
75	100		
77	34.8	25.5	38.3
110	2.7	33.4	50.2#





#71
 Naphthalene
 Concen: 5.342 ug/L
 RT: 13.506 min Scan# 3877
 Delta R.T. 0.003 min
 Lab File: VV021847.D
 Acq: 18 Aug 2021 04:35

Instrument :
 MSVOA_V
 ClientSampled :



Tgt Ion:128 Resp: 55575

Ion	Ratio	Lower	Upper
128	100		
127	12.2	10.0	15.0
129	11.2	8.5	12.7

