

Data Path : Z:\VOASRV\HPCHEM1\MSVOA V\DATA\VV081820\
 Data File : VV018050.D
 Acq On : 18 Aug 2020 13:32
 Operator : SY/MD
 Sample : L3702-05ME
 Misc : 6.58µ/5.0mL/100uL/5.0mL/MSVOA_V/MEOH
 ALS Vial : 11 Sample Multiplier: 1

Instrument :
 MSVOA_V
Client Sampled :
 BFSK8ME

Manual Integrations
APPROVED
 MMDadoda
 8/20/2020 8:55:47 AM

Quant Time: Aug 19 08:24:50 2020
 Quant Method : Z:\VOASRV\HPCHEM1\MSVOA_V\METHOD\SOMVLM081120WMA.M
 Quant Title : VOC Analysis
 QLast Update : Wed Aug 19 07:54:18 2020
 Response via : Initial Calibration

Internal Standards	R.T.	QIon	Response	Conc	Units	Dev(Min)
1) 1,4-Difluorobenzene	5.64	114	335878	50.00	ug/L	0.00
28) Chlorobenzene-d5	8.87	117	331061	50.00	ug/L	0.00
60) 1,4-Dichlorobenzene-d4	11.27	152	154629	50.00	ug/L	0.00

System Monitoring Compounds

4) Vinyl Chloride-d3	1.31	65	86411	33.72	ug/L	0.00
Spiked Amount	50.000	Range	60 - 135	Recovery	=	67.44%
7) Chloroethane-d5	1.58	69	69501m	33.15	ug/L	0.00
Spiked Amount	50.000	Range	70 - 130	Recovery	=	66.30%#
11) 1,1-Dichloroethene-d2	2.10	63	132531	27.04	ug/L	-0.02
Spiked Amount	50.000	Range	60 - 125	Recovery	=	54.08%#
21) 2-Butanone-d5	3.93	46	106507m	63.45	ug/L	0.02
Spiked Amount	100.000	Range	40 - 130	Recovery	=	63.45%
24) Chloroform-d	4.37	84	165188	35.41	ug/L	0.00
Spiked Amount	50.000	Range	70 - 125	Recovery	=	70.82%
26) 1,2-Dichloroethane-d4	5.05	65	117638	38.82	ug/L	0.00
Spiked Amount	50.000	Range	70 - 125	Recovery	=	77.64%
32) Benzene-d6	5.07	84	338934	37.15	ug/L	0.00
Spiked Amount	50.000	Range	70 - 125	Recovery	=	74.30%
36) 1,2-Dichloropropane-d6	6.09	67	110054	36.90	ug/L	0.00
Spiked Amount	50.000	Range	70 - 120	Recovery	=	73.80%
41) Toluene-d8	7.34	98	301774	36.78	ug/L	0.00
Spiked Amount	50.000	Range	80 - 120	Recovery	=	73.56%#
43) trans-1,3-Dichloropropene-	7.64	79	51533	38.09	ug/L	0.00
Spiked Amount	50.000	Range	60 - 125	Recovery	=	76.18%
47) 2-Hexanone-d5	8.14	63	59496	62.16	ug/L	0.03
Spiked Amount	100.000	Range	45 - 130	Recovery	=	62.16%
57) 1,1,2,2-Tetrachloroethane-	10.24	84	123952	31.91	ug/L	0.00
Spiked Amount	50.000	Range	65 - 120	Recovery	=	63.82%#
64) 1,2-Dichlorobenzene-d4	11.65	152	118876	39.06	ug/L	0.00
Spiked Amount	50.000	Range	80 - 120	Recovery	=	78.12%#

Target Compounds					Ovalue
46) Tetrachloroethene	8.00	164	31489	15.859	ug/L 98

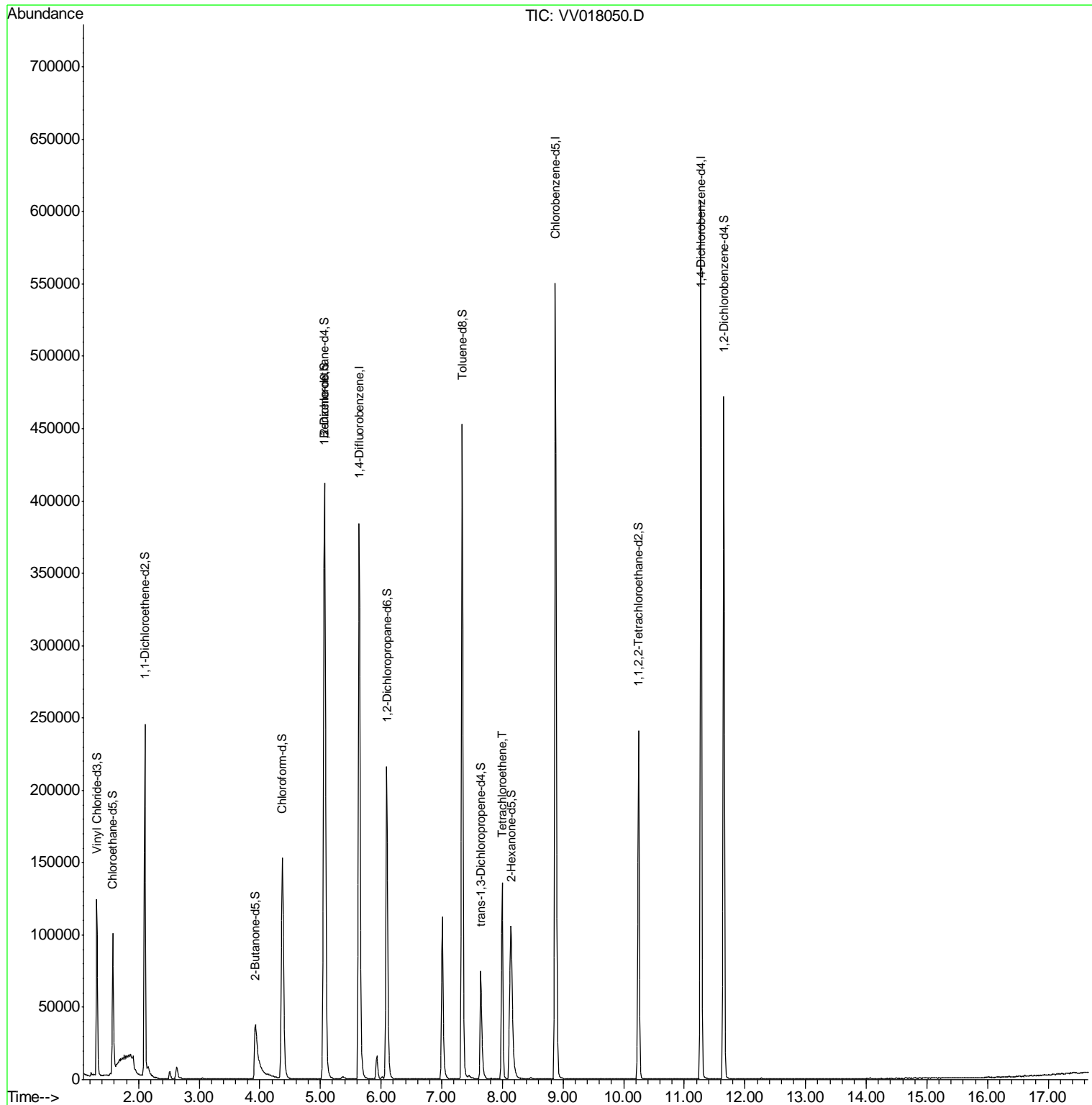
(#) = qualifier out of range (m) = manual integration (+) = signals summed

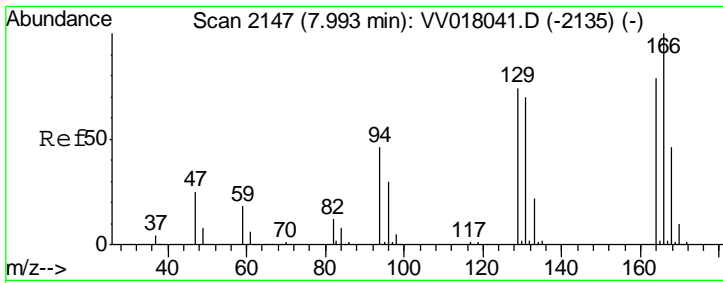
Data Path : Z:\VOASRV\HPCHEM1\MSVOA V\DATA\VV081820\
 Data File : VV018050.D
 Acq On : 18 Aug 2020 13:32
 Operator : SY/MD
 Sample : L3702-05ME
 Misc : 6.58µ/5.0mL/100uL/5.0mL/MSVOA_V/MEOH
 ALS Vial : 11 Sample Multiplier: 1

Instrument :
 MSVOA_V
 ClientSampleId :
 BFSK8ME

Manual Integrations
 APPROVED
 MMDadoda
 8/20/2020 8:55:47 AM

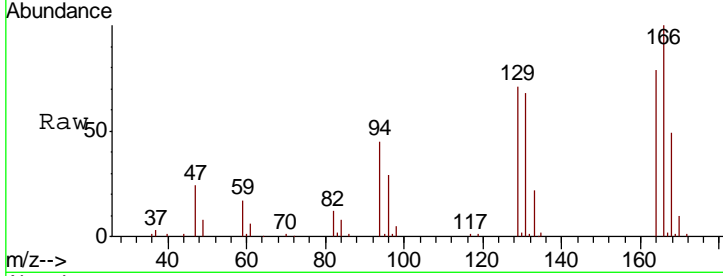
Quant Time: Aug 19 08:24:50 2020
 Quant Method : Z:\VOASRV\HPCHEM1\MSVOA_V\METHOD\SOMVLM081120WMA.M
 Quant Title : VOC Analysis
 QLast Update : Wed Aug 19 07:54:18 2020
 Response via : Initial Calibration





#46
 Tetrachloroethene
 Concen: 15.859 ug/L
 RT: 8.00 min Scan# 2148
 Delta R.T. 0.00 min
 Lab File: VV018050.D
 Acq: 18 Aug 2020 13:32

Instrument :
 MSVOA_V
ClientSampled :
 BFSK8ME



Tot Ion:164 Resp: 31489

Ion	Ratio	Lower	Upper
164	100		
129	90.9	64.8	120.3
131	86.1	64.5	119.9
166	127.3	88.9	165.1

Manual Integrations
APPROVED
 MMDadoda
 8/20/2020 8:55:47 AM

