

Data Path : Z:\VOASRV\HPCHEM1\MSVOA V\DATA\VV081919\
 Data File : VV012275.D
 Acq On : 19 Aug 2019 13:01
 Operator : SY/MD
 Sample : VSTD0.532
 Misc : 25mL/MSVOA V/WATER
 ALS Vial : 2 Sample Multiplier: 1

Instrument :
 MSVOA_V
 ClientSampleId :

Quant Time: Aug 19 18:26:49 2019
 Quant Method : Z:\VOASRV\HPCHEM1\MSVOA_V\METHOD\SOMVTR081919WMA.M
 Quant Title : TRACE VOA SOM01.0
 QLast Update : Mon Aug 19 18:23:47 2019
 Response via : Initial Calibration

Internal Standards	R.T.	QIon	Response	Conc	Units	Dev(Min)
1) 1,4-Difluorobenzene	5.66	114	122635	5.00	ug/L	0.00
28) Chlorobenzene-d5	8.89	117	118011	5.00	ug/L	0.00
60) 1,4-Dichlorobenzene-d4	11.29	152	59415	5.00	ug/L	0.00

System Monitoring Compounds

4) Vinyl Chloride-d3	1.32	65	3107	0.41	ug/L	0.00
7) Chloroethane-d5	1.58	69	2502	0.45	ug/L	0.00
11) 1,1-Dichloroethene-d2	2.13	63	6385	0.50	ug/L	0.00
20) 2-Butanone-d5	3.99	46	908	0.56	ug/L	0.03
24) Chloroform-d	4.40	84	8581	0.56	ug/L	0.00
26) 1,2-Dichloroethane-d4	5.09	65	4526	0.61	ug/L	0.00
32) Benzene-d6	5.09	84	16346	0.54	ug/L	0.00
36) 1,2-Dichloropropane-d6	6.12	67	4692	0.54	ug/L	0.00
41) Toluene-d8	7.36	98	13495	0.48	ug/L	0.00
43) trans-1,3-Dichloropropene-	7.67	79	1578	0.45	ug/L	0.00
46) 2-Hexanone-d5	8.14	63	4533	4.14	ug/L	0.00
57) 1,1,2,2-Tetrachloroethane-	10.26	84	3585	0.58	ug/L	0.00
64) 1,2-Dichlorobenzene-d4	11.67	152	6915	0.66	ug/L	0.00

Target Compounds

						Qvalue
2) Dichlorodifluoromethane	1.14	85	6573	0.524	ug/L	98
3) Chloromethane	1.25	50	3471	0.340	ug/L	85
5) Vinyl chloride	1.32	62	3623	0.345	ug/L	95
6) Bromomethane	1.54	94	1949	0.337	ug/L	94
8) Chloroethane	1.60	64	2047	0.352	ug/L	94
9) Trichlorofluoromethane	1.77	101	6154	0.436	ug/L	93
10) 1,1,2-Trichloro-1,2,2-trif	2.14	101	2677	0.382	ug/L	88
12) 1,1-Dichloroethene	2.14	96	2319	0.357	ug/L	81
14) Carbon disulfide	2.32	76	7630	0.413	ug/L	97
15) Methyl Acetate	2.47	43	883	0.365	ug/L #	64
16) Methylene chloride	2.53	84	3163	0.465	ug/L	96
17) Methyl tert-butyl Ether	2.81	73	7507	0.419	ug/L	97
18) trans-1,2-Dichloroethene	2.78	96	3760	0.438	ug/L	95
19) 1,1-Dichloroethane	3.23	63	5925	0.382	ug/L	92
21) 2-Butanone	4.08	43	4338	2.212	ug/L	94
22) cis-1,2-Dichloroethene	3.96	96	3685	0.393	ug/L	98
23) Bromochloromethane	4.30	128	1744	0.431	ug/L	95
25) Chloroform	4.42	83	9009	0.502	ug/L	93
27) 1,2-Dichloroethane	5.18	62	4080	0.410	ug/L	97
29) 1,1,1-Trichloroethane	4.66	97	6739	0.460	ug/L	99
30) Cyclohexane	4.73	56	4594	0.335	ug/L	96
31) Carbon tetrachloride	4.87	117	6045	0.453	ug/L	97
33) Benzene	5.14	78	13503	0.390	ug/L	100
34) Trichloroethene	5.96	95	4059	0.423	ug/L	96
35) Methylcyclohexane	6.17	83	5681	0.387	ug/L	98
37) 1,2-Dichloropropane	6.22	63	3288	0.385	ug/L #	91
38) Bromodichloromethane	6.55	83	4860	0.424	ug/L #	94
39) cis-1,3-Dichloropropene	7.07	75	4490	0.370	ug/L	98
40) 4-Methyl-2-pentanone	7.28	43	14788	3.168	ug/L	100
42) Toluene	7.43	91	13772	0.369	ug/L	100

Data Path : Z:\VOASRV\HPCHEM1\MSVOA V\DATA\VV081919\
 Data File : VV012275.D
 Acq On : 19 Aug 2019 13:01
 Operator : SY/MD
 Sample : VSTD0.532
 Misc : 25mL/MSVOA V/WATER
 ALS Vial : 2 Sample Multiplier: 1

Instrument :
 MSVOA_V
 ClientSampleId :

Quant Time: Aug 19 18:26:49 2019
 Quant Method : Z:\VOASRV\HPCHEM1\MSVOA_V\METHOD\SOMVTR081919WMA.M
 Quant Title : TRACE VOA SOM01.0
 QLast Update : Mon Aug 19 18:23:47 2019
 Response via : Initial Calibration

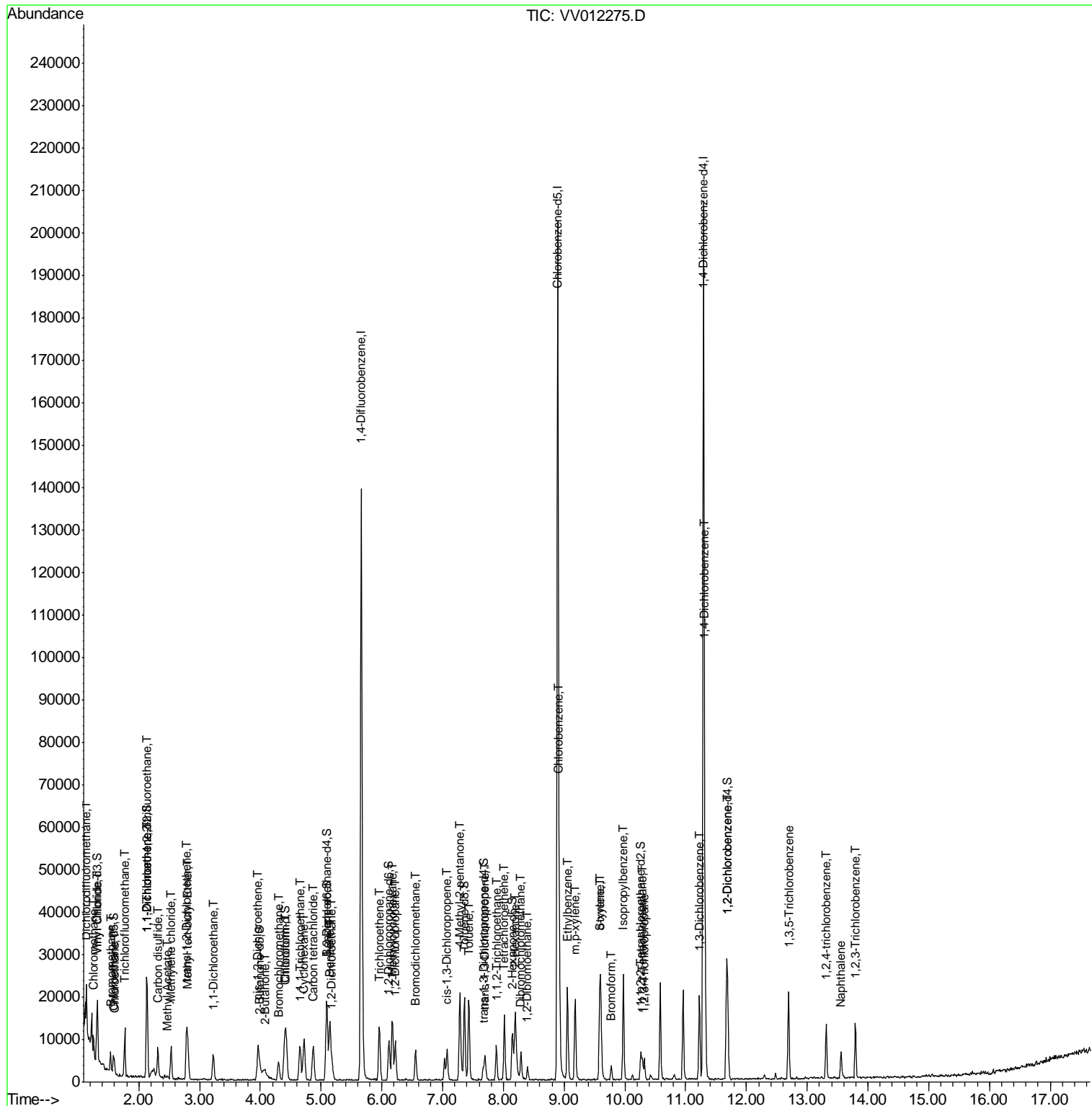
Internal Standards	R.T.	QIon	Response	Conc	Units	Dev(Min)
44) trans-1,3-Dichloropropene	7.70	75	3769	0.390	ug/L	94
45) 1,1,2-Trichloroethane	7.88	97	2549	0.434	ug/L	91
47) Tetrachloroethene	8.02	164	3937	0.486	ug/L	91
48) 2-Hexanone	8.20	43	11143	3.405	ug/L	95
49) Dibromochloromethane	8.29	129	3326	0.447	ug/L	96
50) 1,2-Dibromoethane	8.40	107	2261	0.400	ug/L #	93
51) Chlorobenzene	8.92	112	10379	0.425	ug/L	94
52) Ethylbenzene	9.05	91	15384	0.382	ug/L	94
53) m,p-xylene	9.18	106	5608	0.360	ug/L	92
54) o-xylene	9.59	106	5582	0.379	ug/L	85
55) Styrene	9.60	104	9454	0.385	ug/L	90
56) Isopropylbenzene	9.97	105	15929	0.402	ug/L	98
58) 1,1,2,2-Tetrachloroethane	10.29	83	2105	0.316	ug/L #	83
59) 1,2,3-Trichloropropane	10.32	75	1950	0.394	ug/L	92
61) Bromoform	9.77	173	1642	0.426	ug/L #	87
62) 1,3-Dichlorobenzene	11.22	146	8997	0.457	ug/L	99
63) 1,4-Dichlorobenzene	11.32	146	9171	0.466	ug/L	95
65) 1,2-Dichlorobenzene	11.69	146	8274	0.458	ug/L	92
67) 1,3,5-Trichlorobenzene	12.69	180	7096	0.468	ug/L	98
68) 1,2,4-trichlorobenzene	13.31	180	4591	0.406	ug/L	94
69) Naphthalene	13.55	128	5766	0.362	ug/L #	95
70) 1,2,3-Trichlorobenzene	13.79	180	4429	0.419	ug/L	98

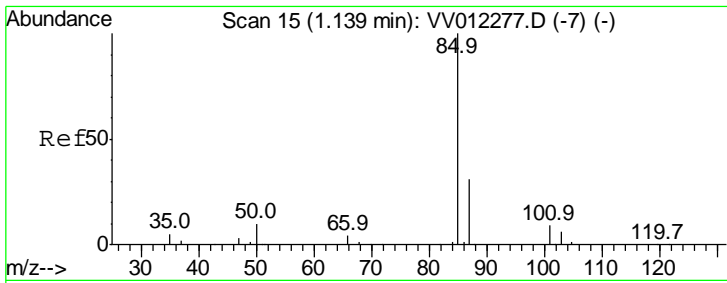
(#) = qualifier out of range (m) = manual integration (+) = signals summed

Data Path : Z:\VOASRV\HPCHEM1\MSVOA V\DATA\VV081919\
 Data File : VV012275.D
 Acq On : 19 Aug 2019 13:01
 Operator : SY/MD
 Sample : VSTD0.532
 Misc : 25mL/MSVOA V/WATER
 ALS Vial : 2 Sample Multiplier: 1

Instrument :
 MSVOA_V
 Client Sampled :

Quant Time: Aug 19 18:26:49 2019
 Quant Method : Z:\VOASRV\HPCHEM1\MSVOA_V\METHOD\SOMVTR081919WMA.M
 Quant Title : TRACE VOA SOM01.0
 QLast Update : Mon Aug 19 18:23:47 2019
 Response via : Initial Calibration

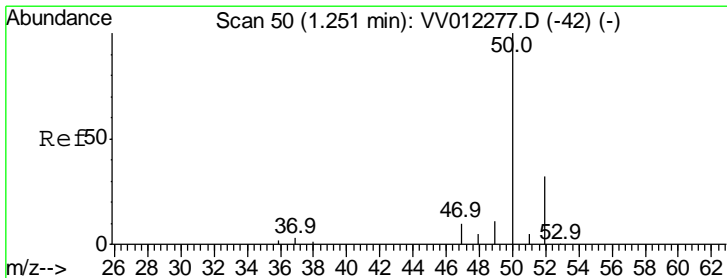
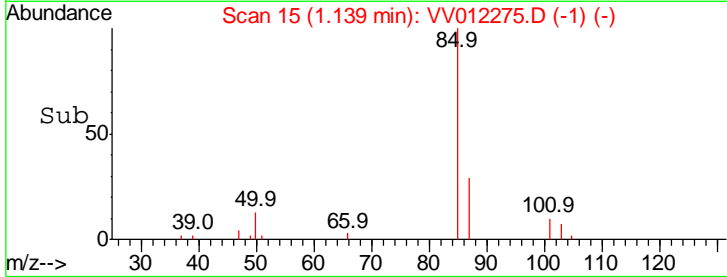
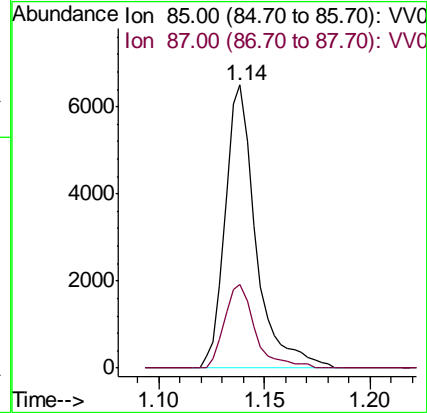
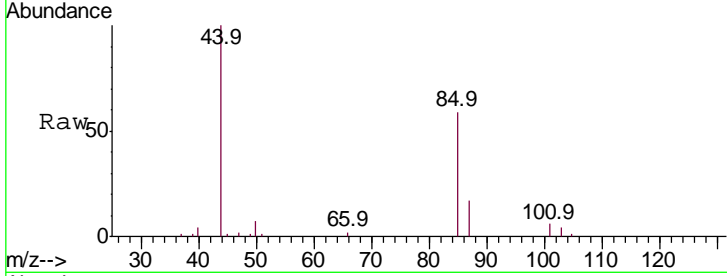




#2
 Dichlorodifluoromethane
 Concen: 0.524 ug/L
 RT: 1.14 min Scan# 15
 Delta R.T. -0.00 min
 Lab File: VV012275.D
 Acq: 19 Aug 2019 13:01

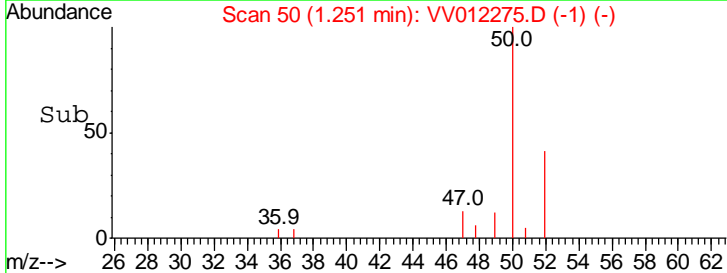
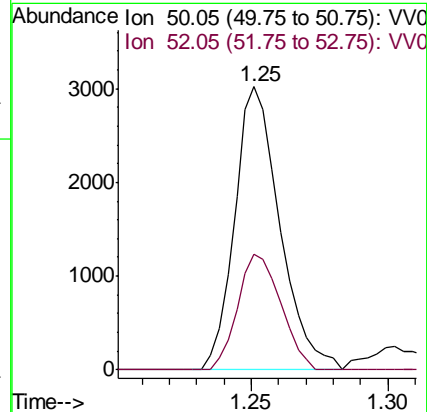
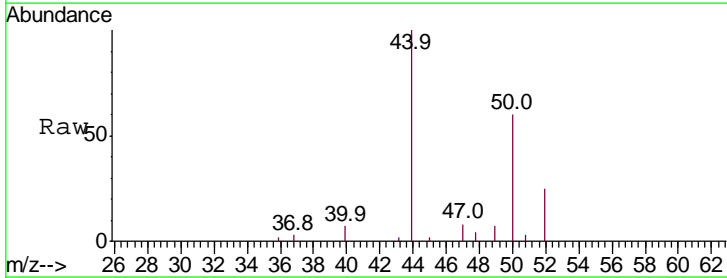
Instrument :
 MSVOA_V
 ClientSampled :

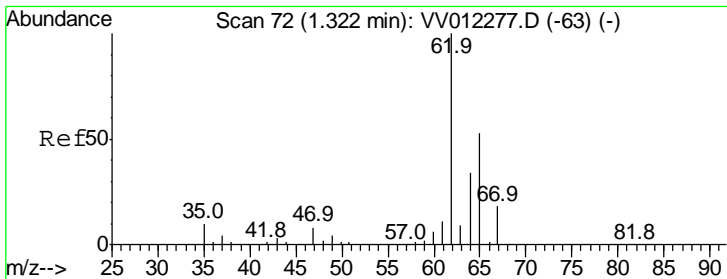
Tgt Ion: 85 Resp: 6573
 Ion Ratio Lower Upper
 85 100
 87 29.5 24.6 37.0



#3
 Chloromethane
 Concen: 0.340 ug/L
 RT: 1.25 min Scan# 50
 Delta R.T. -0.00 min
 Lab File: VV012275.D
 Acq: 19 Aug 2019 13:01

Tgt Ion: 50 Resp: 3471
 Ion Ratio Lower Upper
 50 100
 52 41.0 22.6 42.0

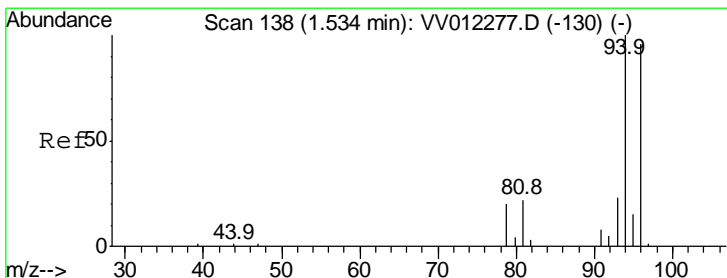
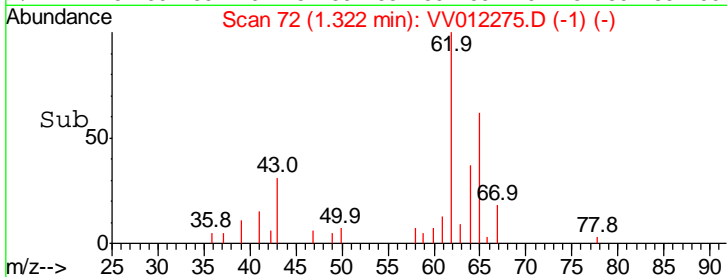
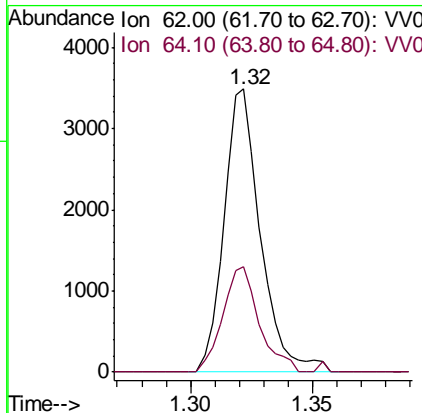
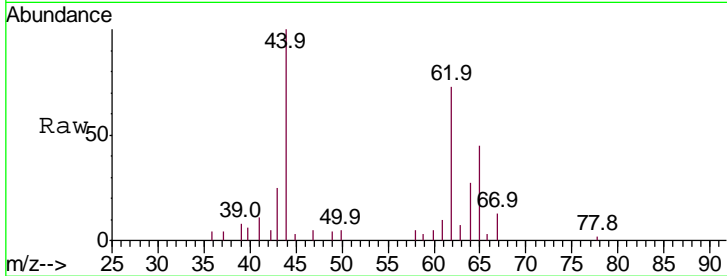




#5
 Vinyl chloride
 Concen: 0.345 ug/L
 RT: 1.32 min Scan# 72
 Delta R.T. -0.00 min
 Lab File: VV012275.D
 Acq: 19 Aug 2019 13:01

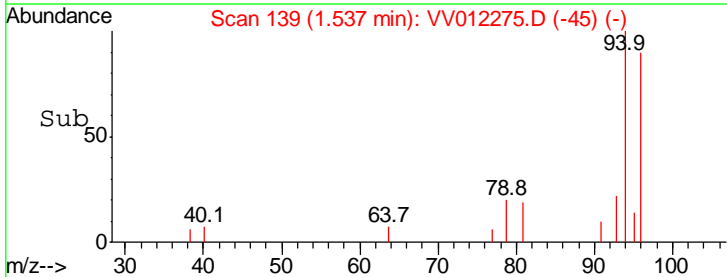
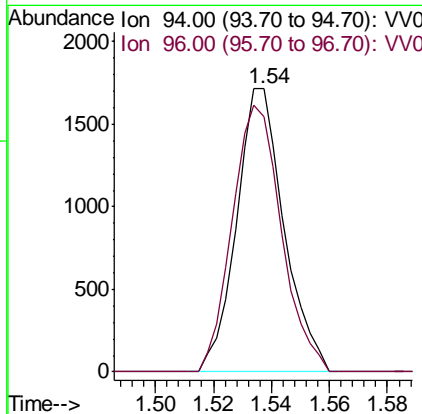
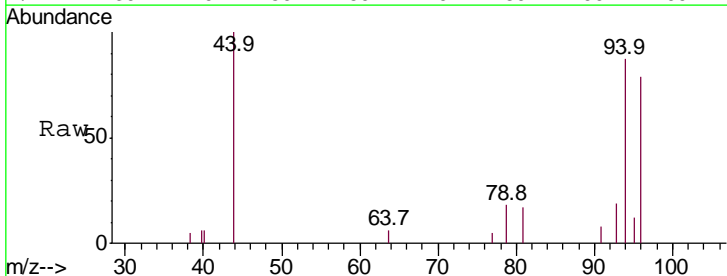
Instrument :
 MSVOA_V
 ClientSampled :

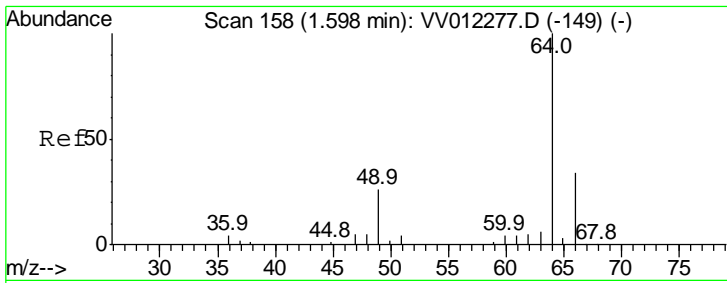
Tgt Ion	Resp	Lower	Upper
62	3623		
62	100		
64	37.0	23.8	44.2



#6
 Bromomethane
 Concen: 0.337 ug/L
 RT: 1.54 min Scan# 139
 Delta R.T. 0.00 min
 Lab File: VV012275.D
 Acq: 19 Aug 2019 13:01

Tgt Ion	Resp	Lower	Upper
94	1949		
94	100		
96	90.4	67.3	125.1



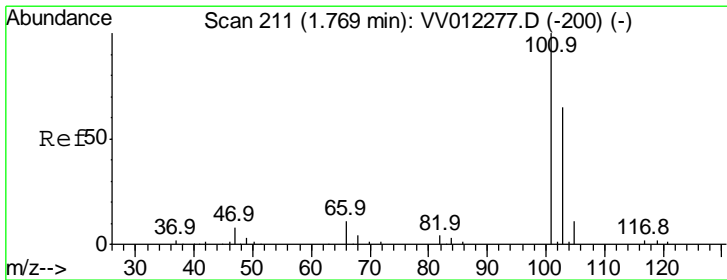
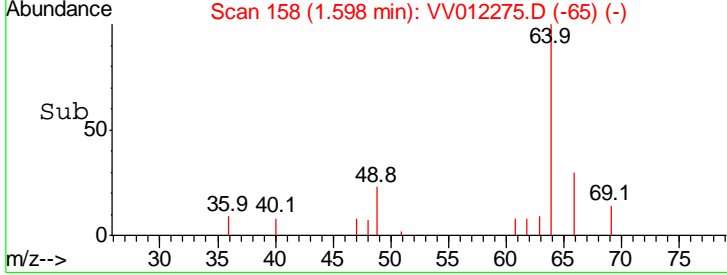
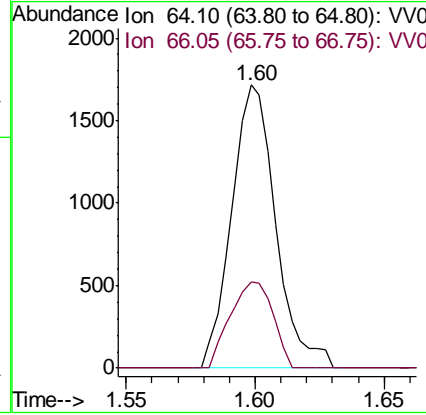
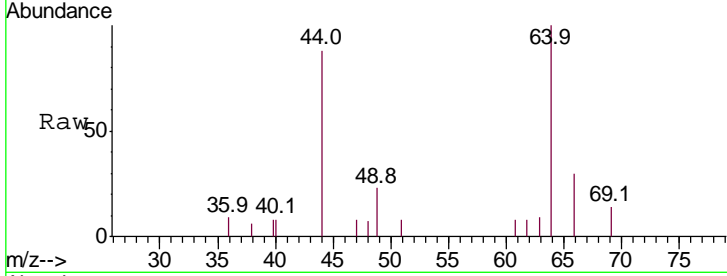


#8
 Chloroethane
 Concen: 0.352 ug/L
 RT: 1.60 min Scan# 158
 Delta R.T. -0.00 min
 Lab File: VV012275.D
 Acq: 19 Aug 2019 13:01

Instrument :
 MSVOA_V
 ClientSampled :

Tgt Ion: 64 Resp: 2047

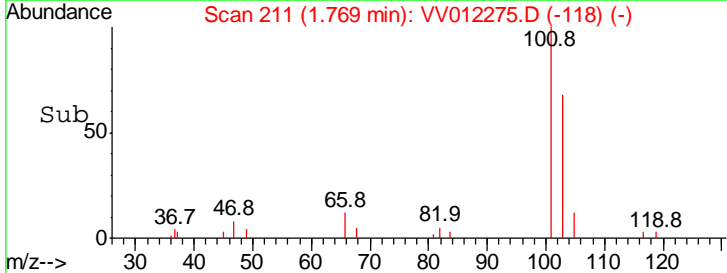
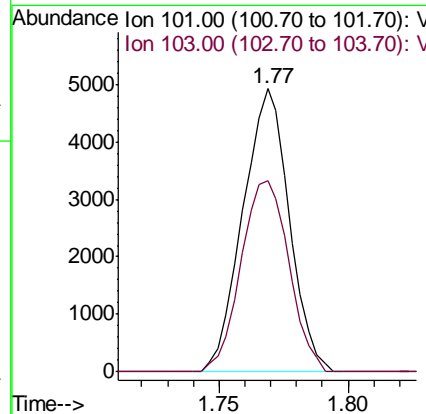
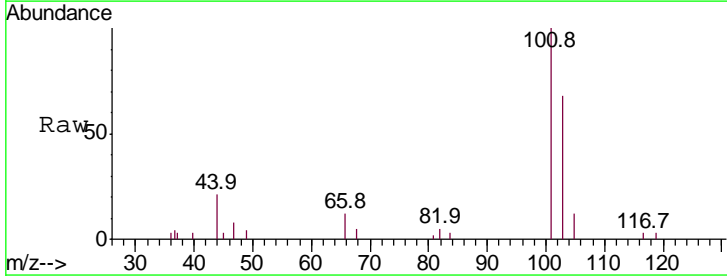
Ion	Ratio	Lower	Upper
64	100		
66	30.4	23.7	44.1

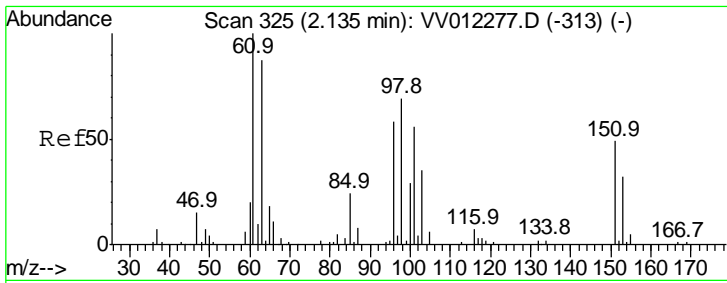


#9
 Trichlorofluoromethane
 Concen: 0.436 ug/L
 RT: 1.77 min Scan# 211
 Delta R.T. -0.00 min
 Lab File: VV012275.D
 Acq: 19 Aug 2019 13:01

Tgt Ion: 101 Resp: 6154

Ion	Ratio	Lower	Upper
101	100		
103	69.8	51.5	77.3

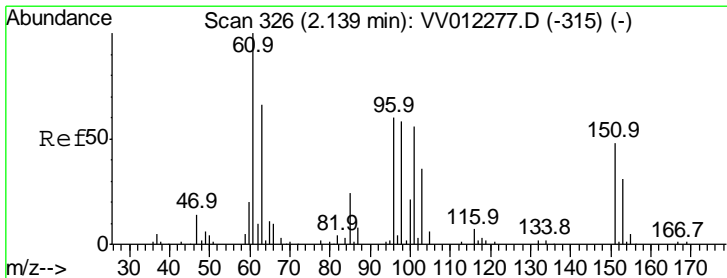
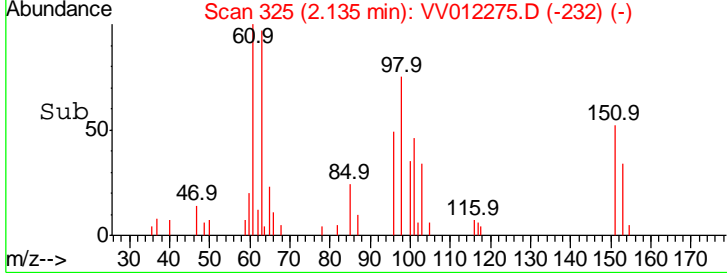
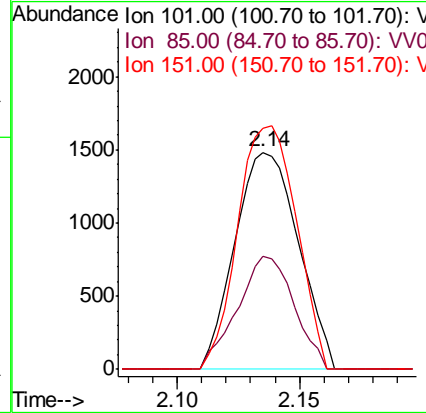
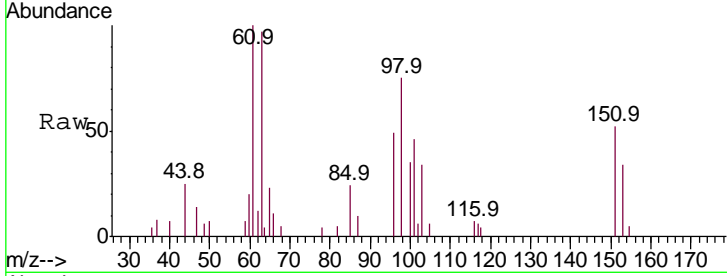




#10
 1,1,2-Trichloro-1,2,2-trifluoroethane
 Concen: 0.382 ug/L
 RT: 2.14 min Scan# 325
 Delta R.T. -0.00 min
 Lab File: VV012275.D
 Acq: 19 Aug 2019 13:01

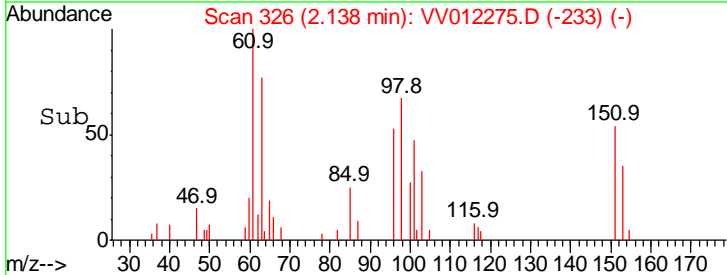
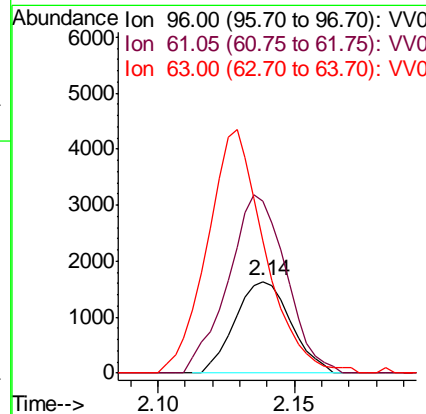
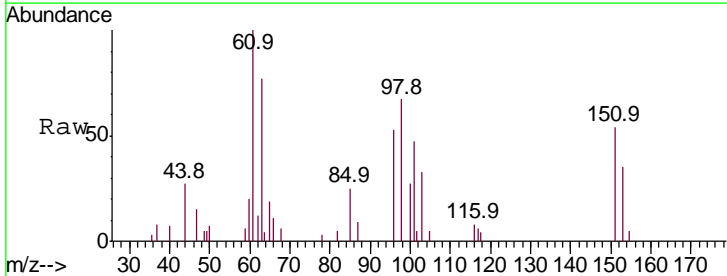
Instrument :
 MSVOA_V
 ClientSampled :

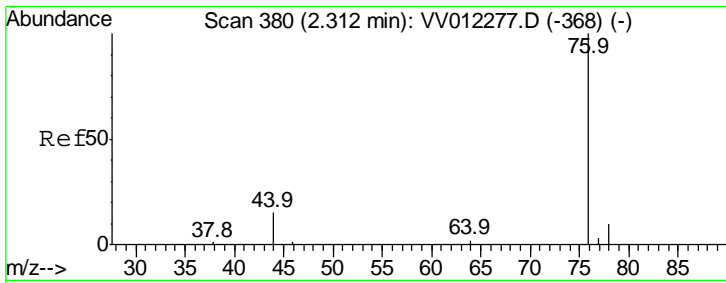
Tgt Ion	Resp	Lower	Upper
101	2677		
101	100		
85	46.4	34.9	52.3
151	103.7	71.5	107.3



#12
 1,1-Dichloroethene
 Concen: 0.357 ug/L
 RT: 2.14 min Scan# 326
 Delta R.T. -0.00 min
 Lab File: VV012275.D
 Acq: 19 Aug 2019 13:01

Tgt Ion	Resp	Lower	Upper
96	2319		
96	100		
61	187.9	117.7	218.7
63	144.9	81.1	150.5

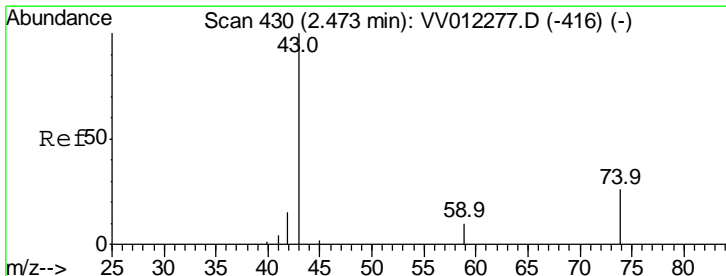
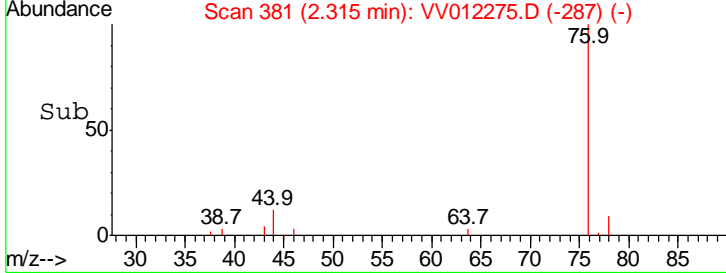
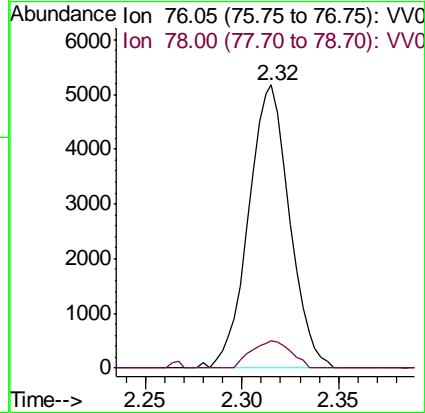
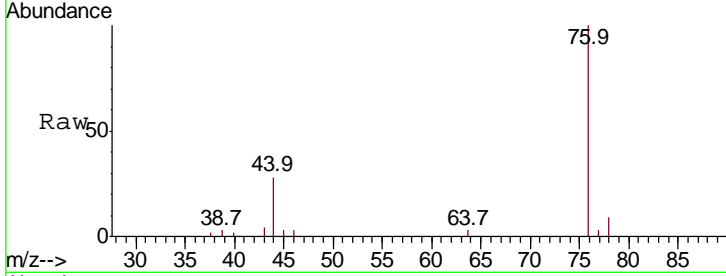




#14
 Carbon disulfide
 Concen: 0.413 ug/L
 RT: 2.32 min Scan# 381
 Delta R.T. 0.00 min
 Lab File: VV012275.D
 Acq: 19 Aug 2019 13:01

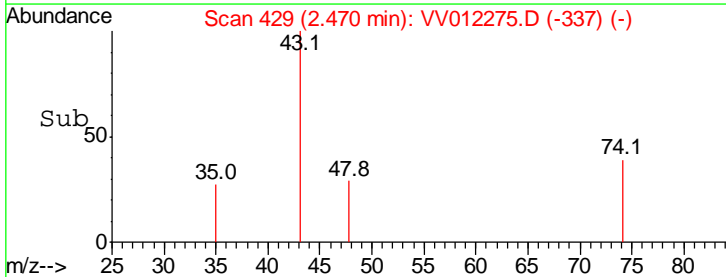
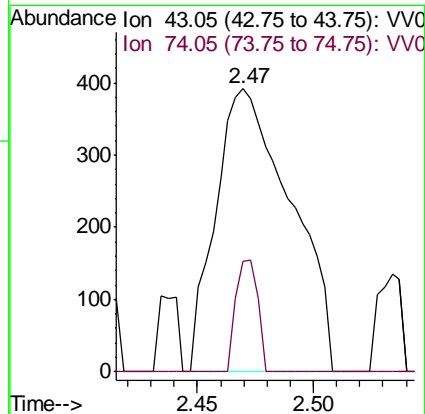
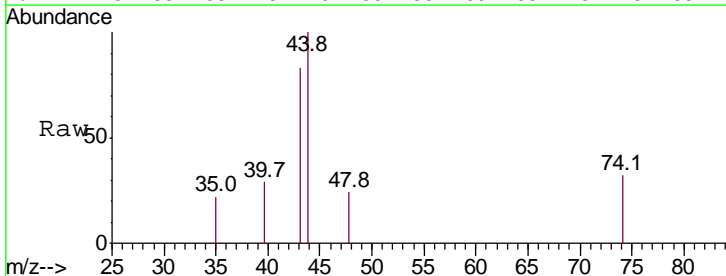
Instrument : MSVOA_V
 ClientSampled :

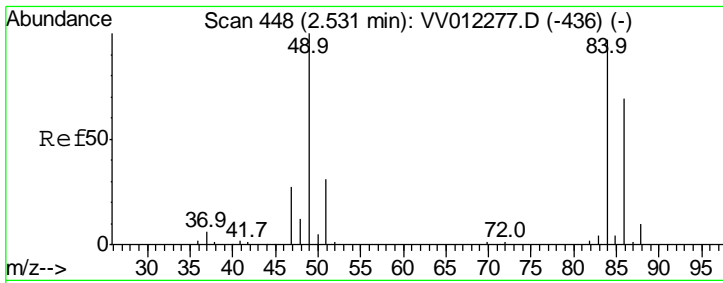
Tgt Ion	Ratio	Lower	Upper
76	100		
78	9.5	8.3	12.5



#15
 Methyl Acetate
 Concen: 0.365 ug/L
 RT: 2.47 min Scan# 429
 Delta R.T. -0.00 min
 Lab File: VV012275.D
 Acq: 19 Aug 2019 13:01

Tgt Ion	Ratio	Lower	Upper
43	100		
74	11.2	24.9	37.3#

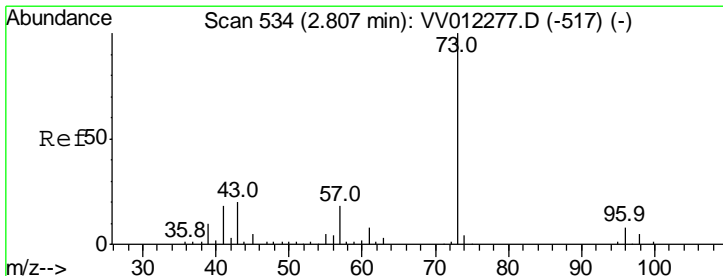
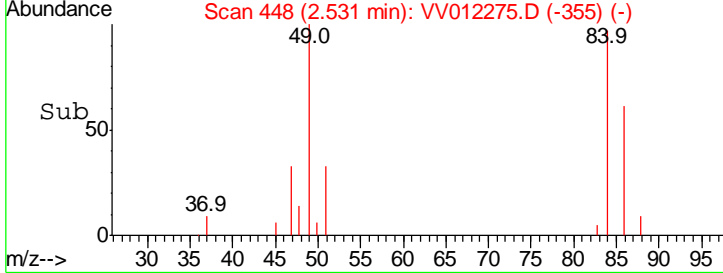
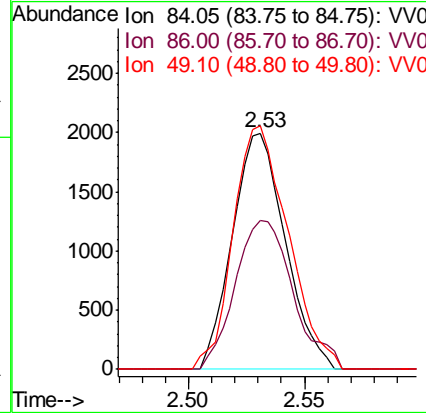
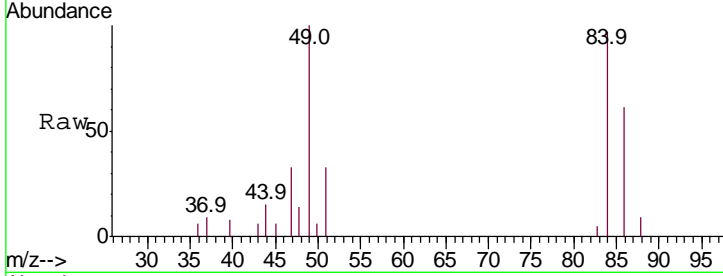




#16
 Methylene chloride
 Concen: 0.465 ug/L
 RT: 2.53 min Scan# 448
 Delta R.T. -0.00 min
 Lab File: VV012275.D
 Acq: 19 Aug 2019 13:01

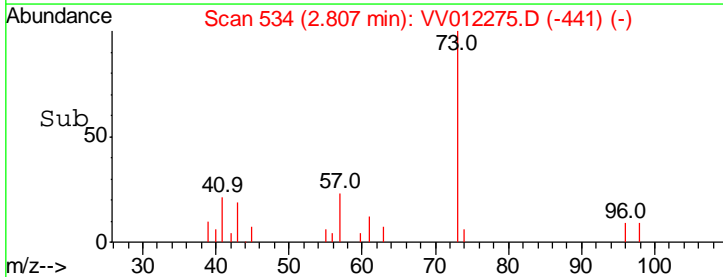
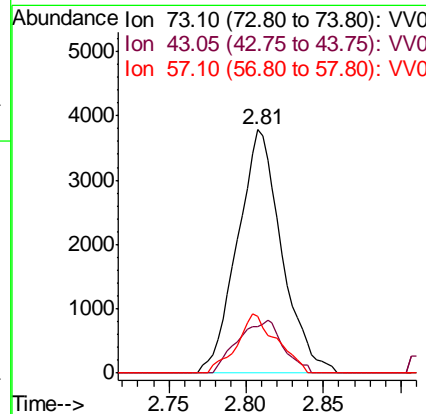
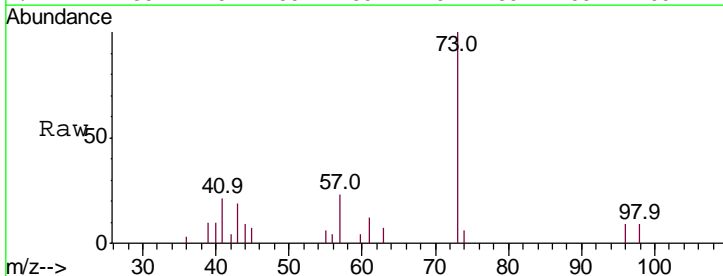
Instrument :
 MSVOA_V
 ClientSampled :

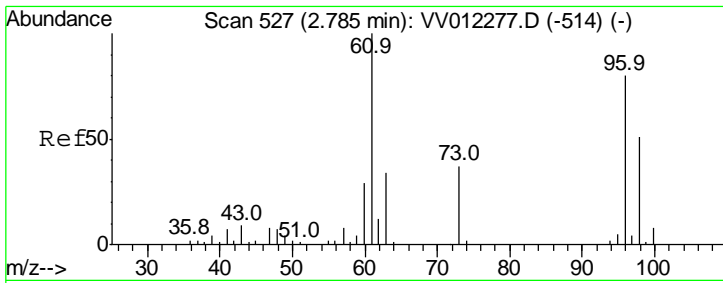
Tgt Ion	Resp	Lower	Upper
84	100		
86	62.8	49.5	91.9
49	103.1	72.1	133.9



#17
 Methyl tert-butyl Ether
 Concen: 0.419 ug/L
 RT: 2.81 min Scan# 534
 Delta R.T. -0.00 min
 Lab File: VV012275.D
 Acq: 19 Aug 2019 13:01

Tgt Ion	Resp	Lower	Upper
73	100		
43	22.3	17.0	25.4
57	21.8	15.8	23.6

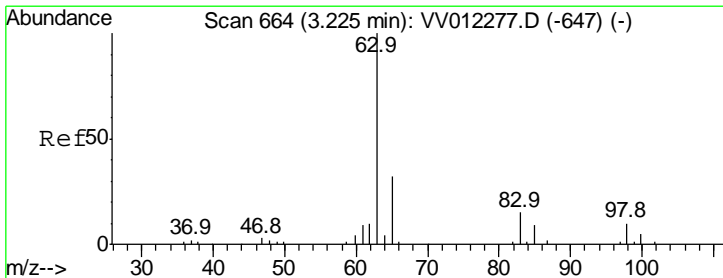
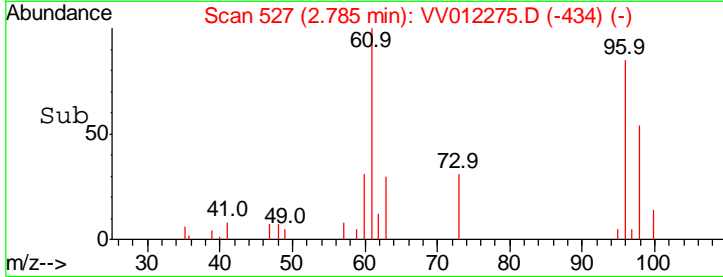
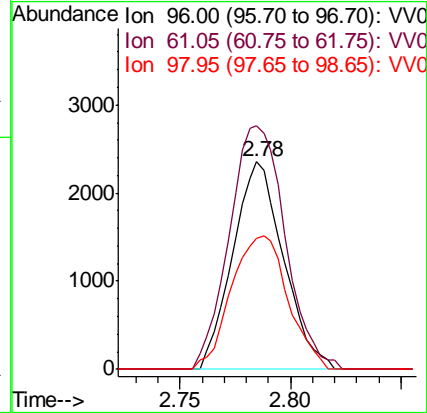
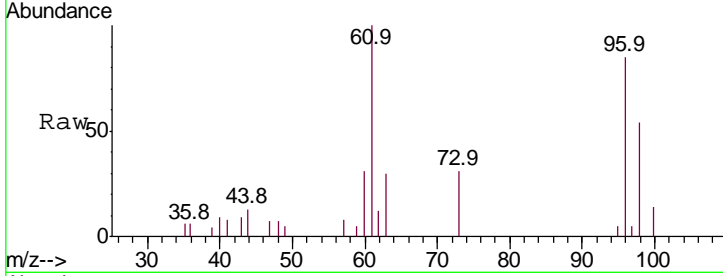




#18
 trans-1,2-Dichloroethene
 Concen: 0.438 ug/L
 RT: 2.78 min Scan# 527
 Delta R.T. -0.00 min
 Lab File: VV012275.D
 Acq: 19 Aug 2019 13:01

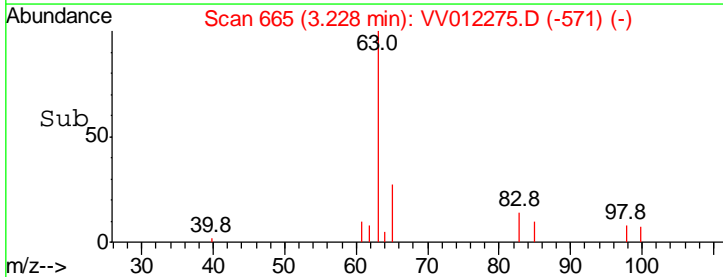
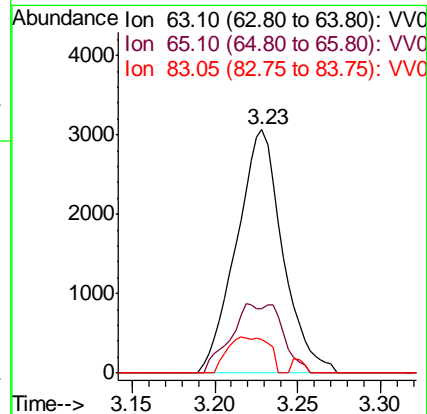
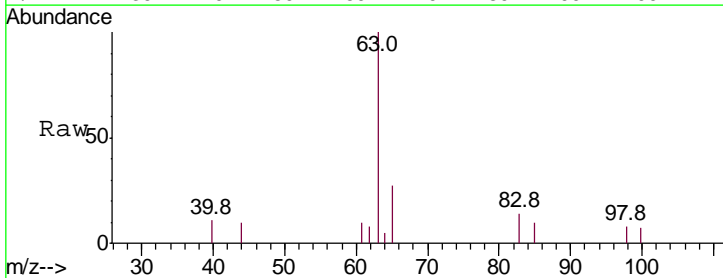
Instrument :
 MSVOA_V
 ClientSampled :

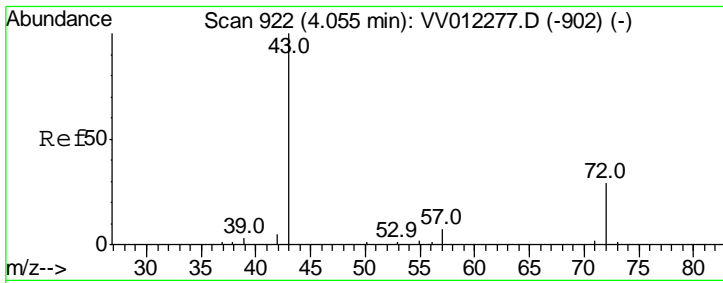
Tgt Ion	Resp	Lower	Upper
96	100		
61	117.3	87.4	162.2
98	63.2	44.7	82.9



#19
 1,1-Dichloroethane
 Concen: 0.382 ug/L
 RT: 3.23 min Scan# 665
 Delta R.T. 0.00 min
 Lab File: VV012275.D
 Acq: 19 Aug 2019 13:01

Tgt Ion	Resp	Lower	Upper
63	100		
65	26.6	22.7	42.1
83	14.0	10.5	19.5

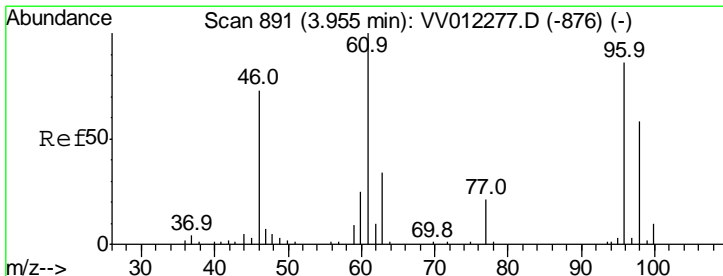
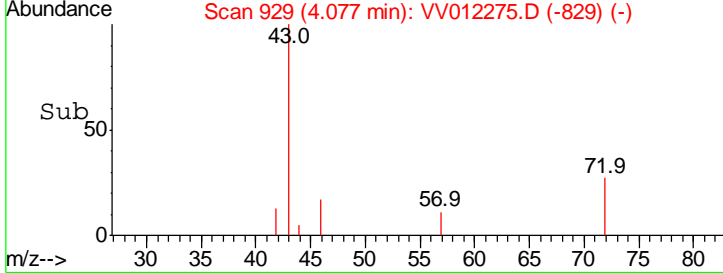
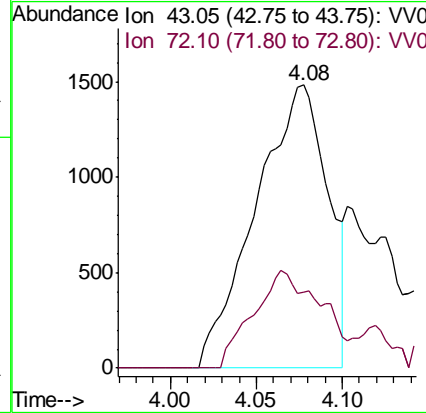
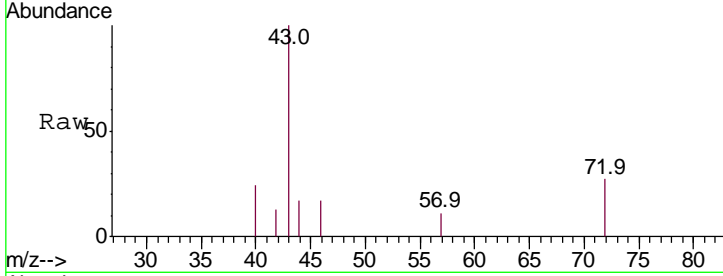




#21
 2-Butanone
 Concen: 2.212 ug/L
 RT: 4.08 min Scan# 929
 Delta R.T. 0.02 min
 Lab File: VV012275.D
 Acq: 19 Aug 2019 13:01

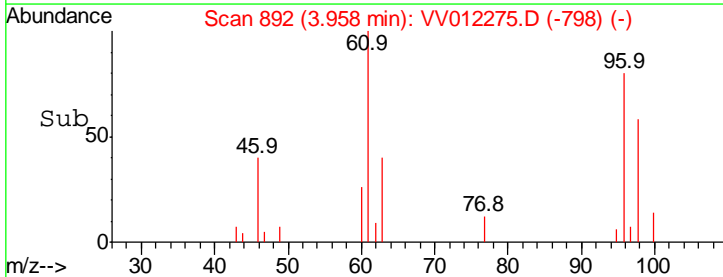
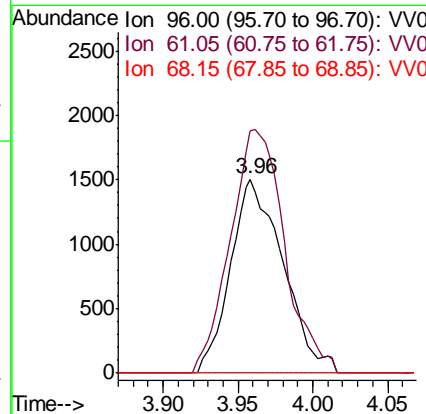
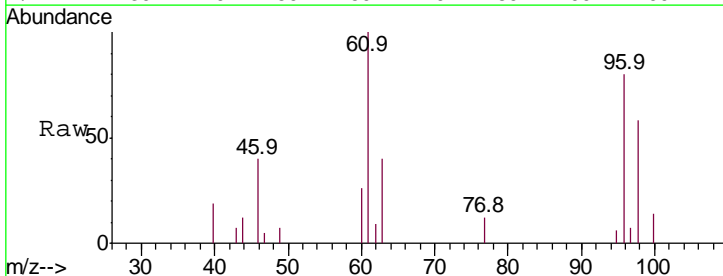
Instrument :
 MSVOA_V
 ClientSampled :

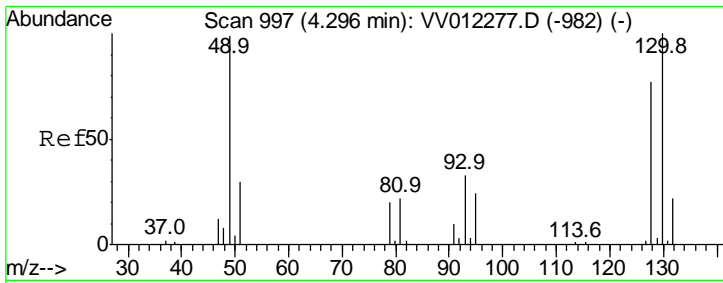
Tgt Ion	Resp	Lower	Upper
43	100		
72	32.6	14.8	44.4



#22
 cis-1,2-Dichloroethene
 Concen: 0.393 ug/L
 RT: 3.96 min Scan# 892
 Delta R.T. 0.00 min
 Lab File: VV012275.D
 Acq: 19 Aug 2019 13:01

Tgt Ion	Resp	Lower	Upper
96	100		
61	114.5	81.6	151.6
68	0.0	0.0	0.0

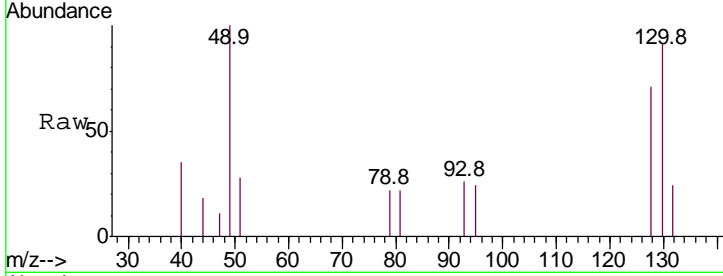




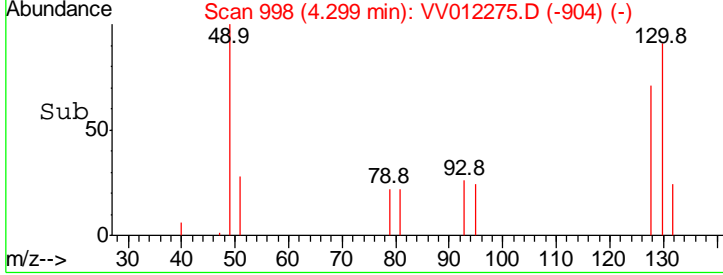
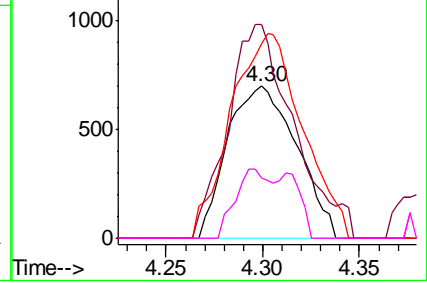
#23
 Bromochloromethane
 Concen: 0.431 ug/L
 RT: 4.30 min Scan# 998
 Delta R.T. 0.00 min
 Lab File: VV012275.D
 Acq: 19 Aug 2019 13:01

Instrument :
 MSVOA_V
 ClientSampled :

Tgt Ion	Resp	Lower	Upper
128	1744		
49	140.8	90.2	167.6
130	128.2	91.2	169.4
51	39.8	31.7	47.5

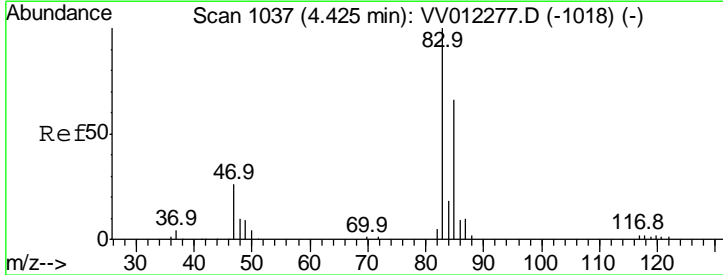


Abundance Ion 127.90 (127.60 to 128.60): V
 Ion 49.10 (48.80 to 49.80): VV0
 Ion 129.95 (129.65 to 130.65): V
 Ion 51.05 (50.75 to 51.75): VV0

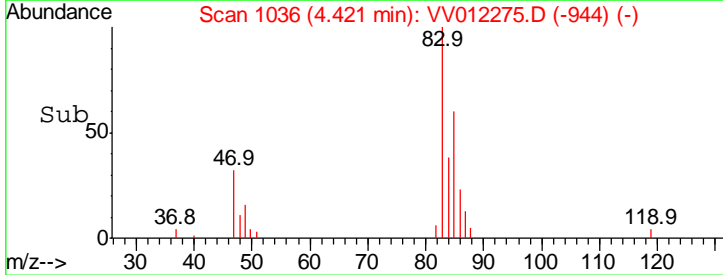
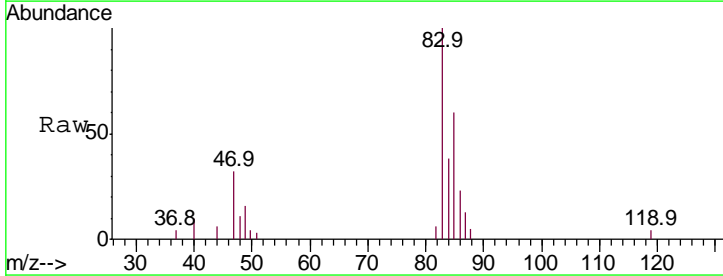
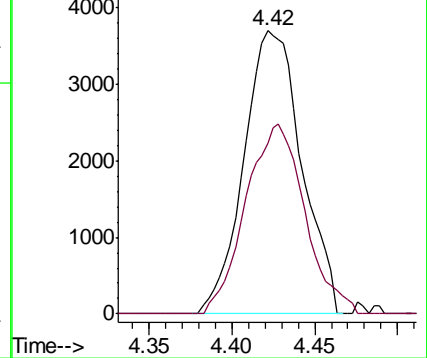


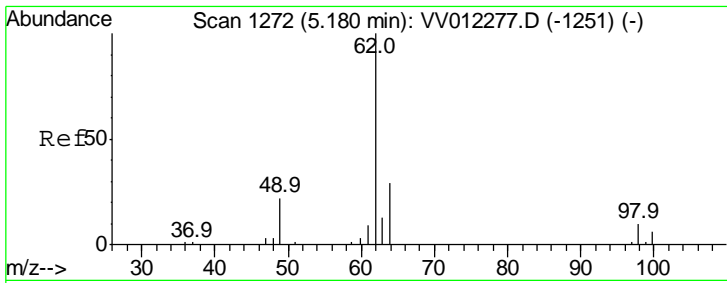
#25
 Chloroform
 Concen: 0.502 ug/L
 RT: 4.42 min Scan# 1036
 Delta R.T. -0.00 min
 Lab File: VV012275.D
 Acq: 19 Aug 2019 13:01

Tgt Ion	Resp	Lower	Upper
83	9009		
83	100		
85	60.3	46.1	85.5



Abundance Ion 83.05 (82.75 to 83.75): VV0
 Ion 85.00 (84.70 to 85.70): VV0

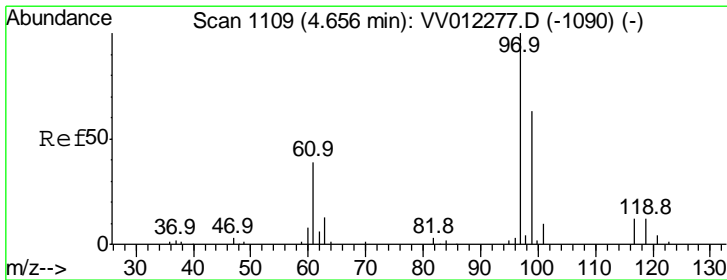
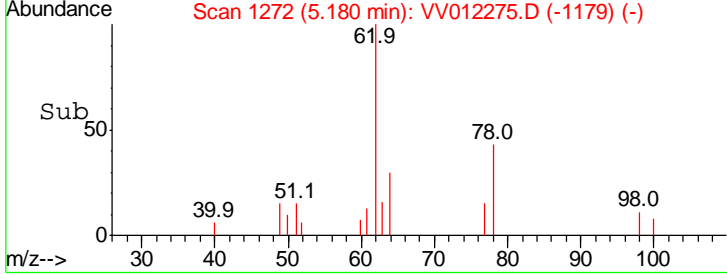
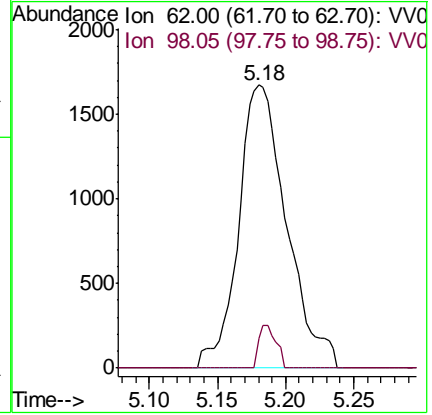
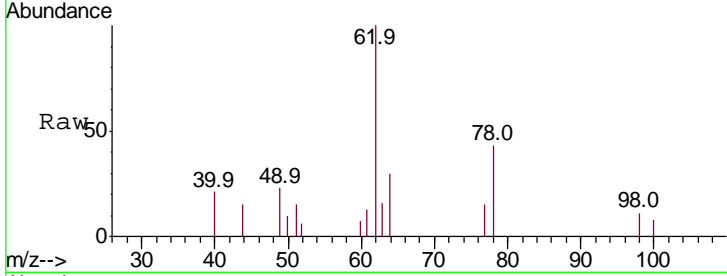




#27
 1,2-Dichloroethane
 Concen: 0.410 ug/L
 RT: 5.18 min Scan# 1272
 Delta R.T. -0.00 min
 Lab File: VV012275.D
 Acq: 19 Aug 2019 13:01

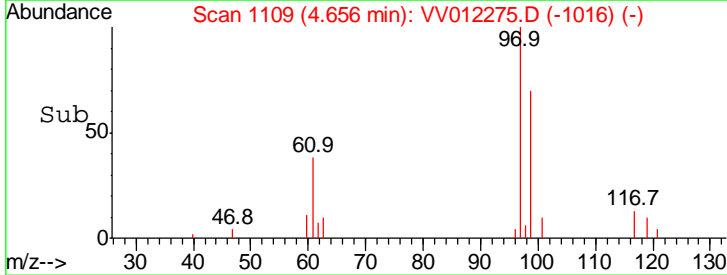
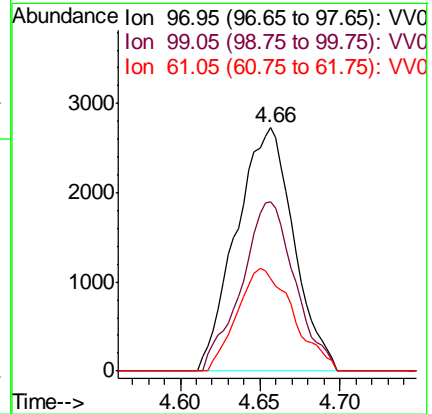
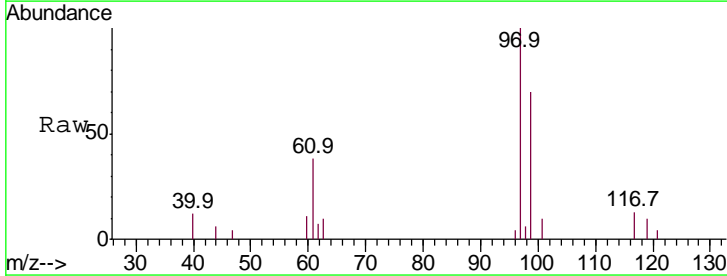
Instrument :
 MSVOA_V
 ClientSampled :

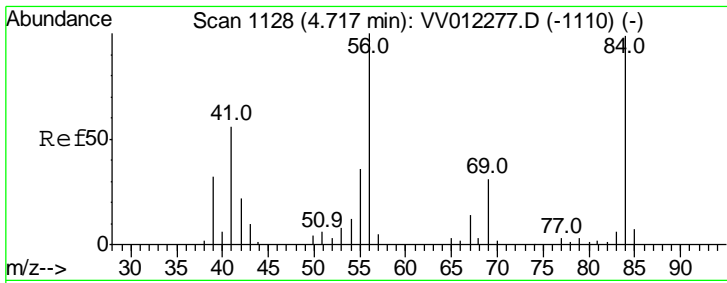
Tgt Ion	Resp	Lower	Upper
62	100		
98	10.6	7.6	11.4



#29
 1,1,1-Trichloroethane
 Concen: 0.460 ug/L
 RT: 4.66 min Scan# 1109
 Delta R.T. -0.00 min
 Lab File: VV012275.D
 Acq: 19 Aug 2019 13:01

Tgt Ion	Resp	Lower	Upper
97	100		
99	64.3	51.7	77.5
61	41.0	31.7	47.5

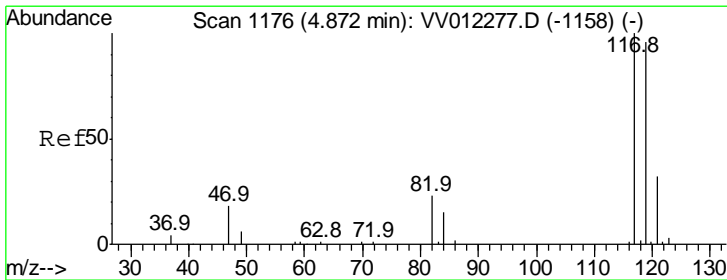
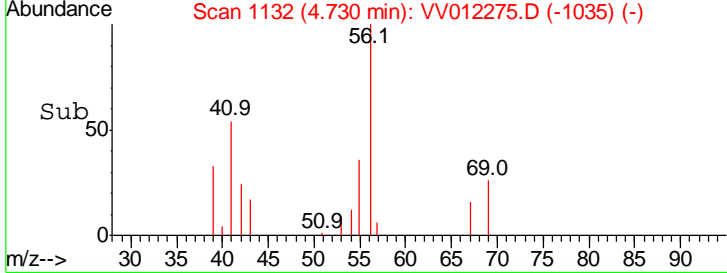
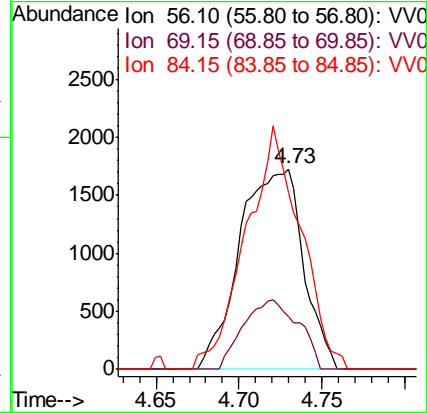
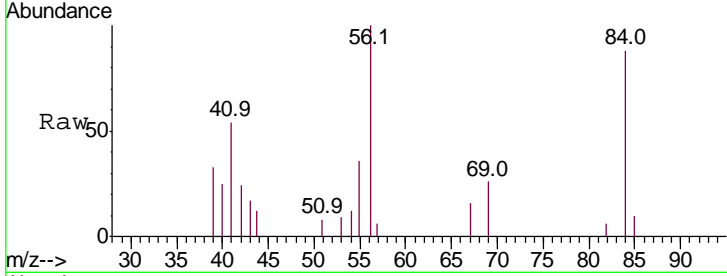




#30
 Cyclohexane
 Concen: 0.335 ug/L
 RT: 4.73 min Scan# 1132
 Delta R.T. 0.01 min
 Lab File: VV012275.D
 Acq: 19 Aug 2019 13:01

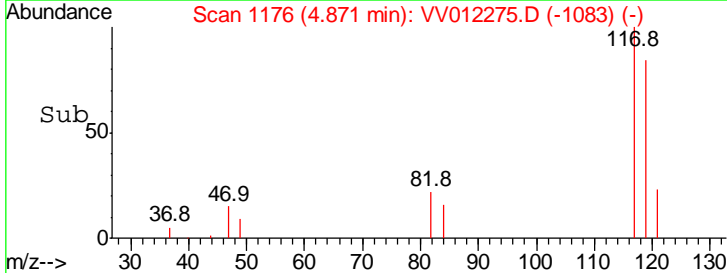
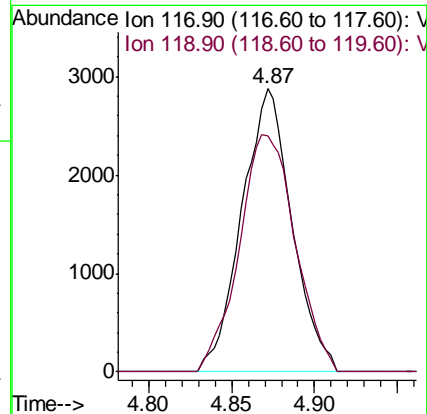
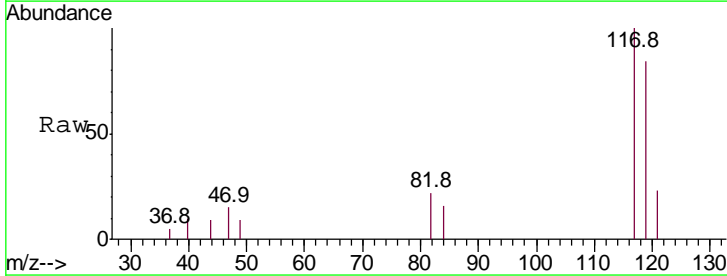
Instrument :
 MSVOA_V
 ClientSampled :

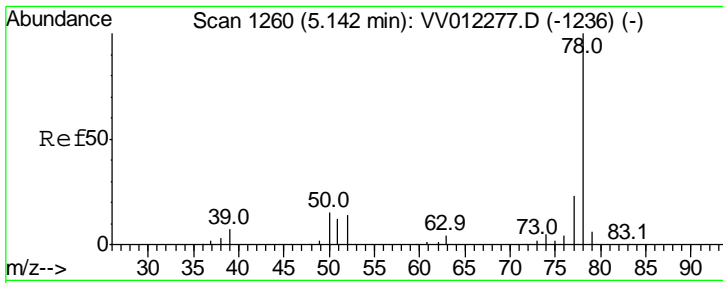
Tgt Ion	Resp	Lower	Upper
56	100		
69	30.0	25.3	37.9
84	104.2	79.9	119.9



#31
 Carbon tetrachloride
 Concen: 0.453 ug/L
 RT: 4.87 min Scan# 1176
 Delta R.T. -0.00 min
 Lab File: VV012275.D
 Acq: 19 Aug 2019 13:01

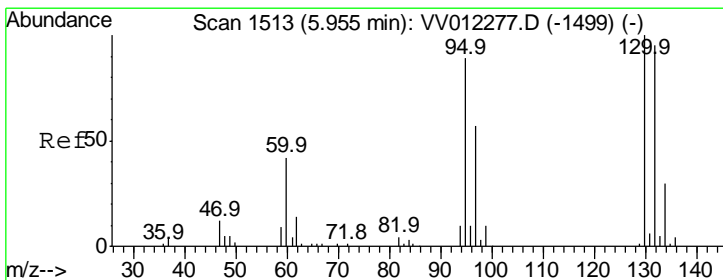
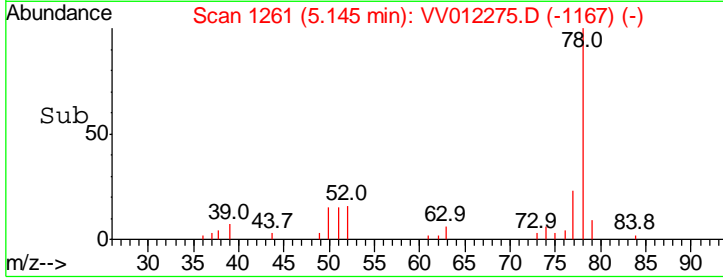
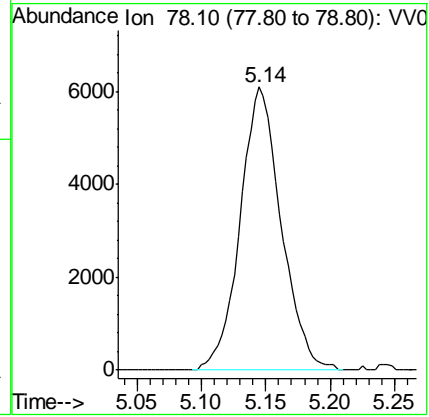
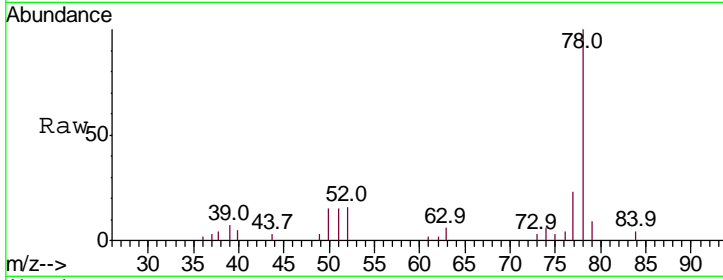
Tgt Ion	Resp	Lower	Upper
117	100		
119	93.6	77.6	116.4





#33
 Benzene
 Concen: 0.390 ug/L
 RT: 5.14 min Scan# 1261
 Delta R.T. 0.00 min
 Lab File: VV012275.D
 Acq: 19 Aug 2019 13:01
 Tgt Ion: 78 Resp: 13503

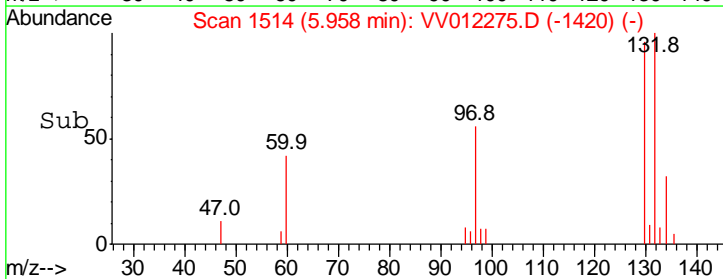
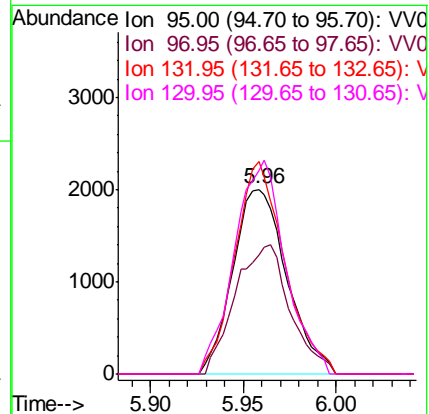
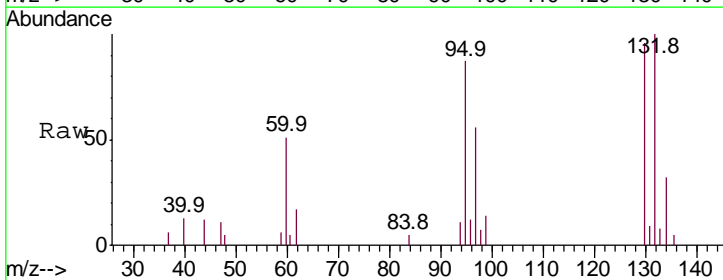
Instrument :
 MSVOA_V
 ClientSampled :

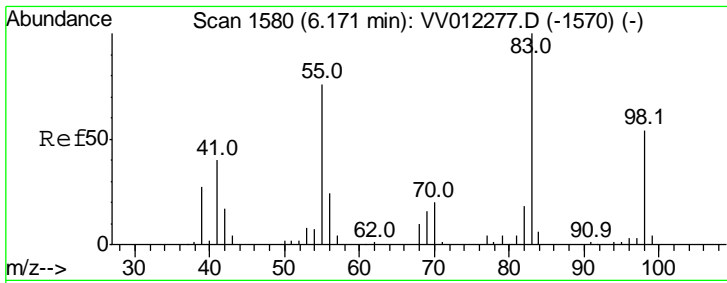


#34
 Trichloroethene
 Concen: 0.423 ug/L
 RT: 5.96 min Scan# 1514
 Delta R.T. 0.00 min
 Lab File: VV012275.D
 Acq: 19 Aug 2019 13:01

Tgt Ion: 95 Resp: 4059

Ion	Ratio	Lower	Upper
95	100		
97	64.4	44.9	83.5
132	115.4	74.9	139.1
130	110.5	79.0	146.8

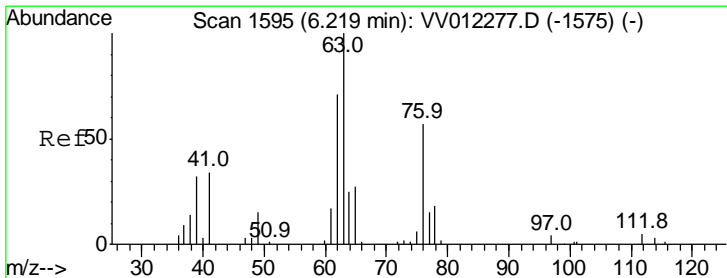
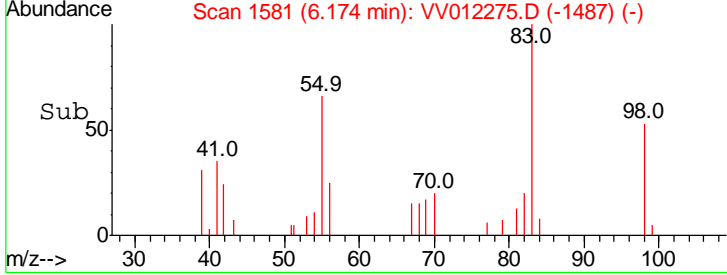
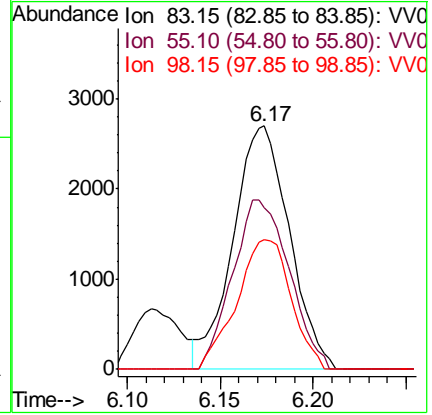
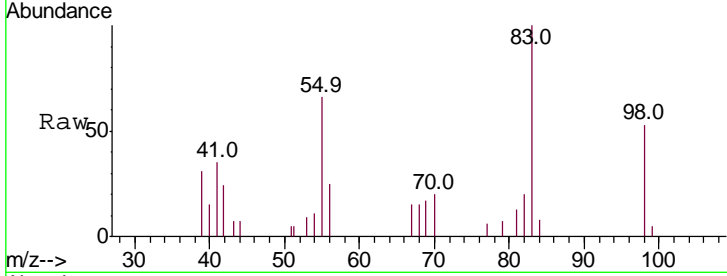




#35
 Methylcyclohexane
 Concen: 0.387 ug/L
 RT: 6.17 min Scan# 1581
 Delta R.T. 0.00 min
 Lab File: VV012275.D
 Acq: 19 Aug 2019 13:01

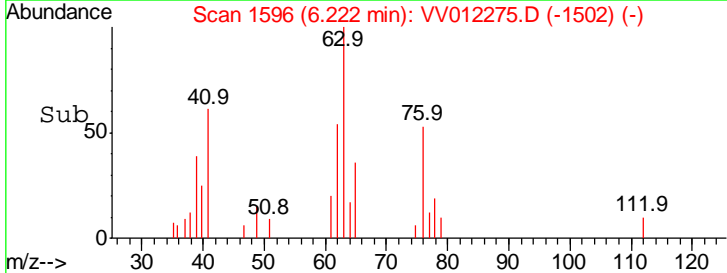
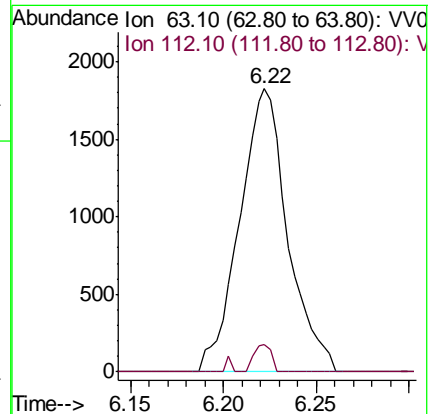
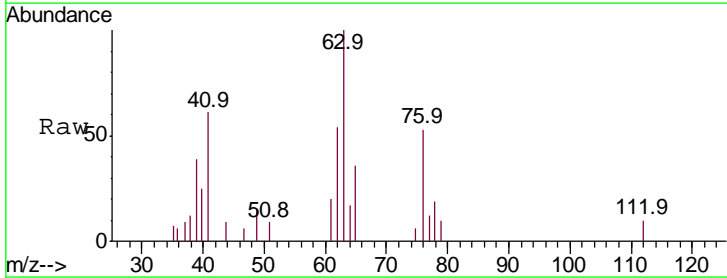
Instrument :
 MSVOA_V
 ClientSampled :

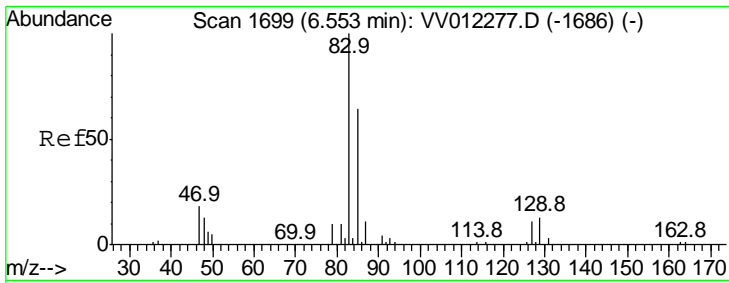
Tgt Ion	Resp	Lower	Upper
83	100		
55	69.9	57.3	85.9
98	51.3	40.3	60.5



#37
 1,2-Dichloropropane
 Concen: 0.385 ug/L
 RT: 6.22 min Scan# 1596
 Delta R.T. 0.00 min
 Lab File: VV012275.D
 Acq: 19 Aug 2019 13:01

Tgt Ion	Resp	Lower	Upper
63	100		
112	3.4	5.1	7.7#

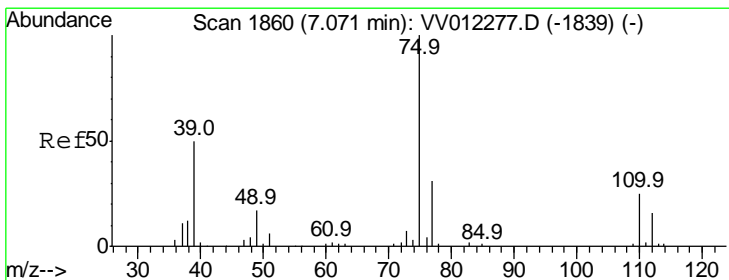
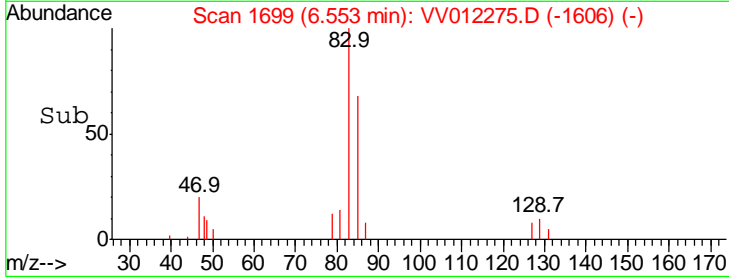
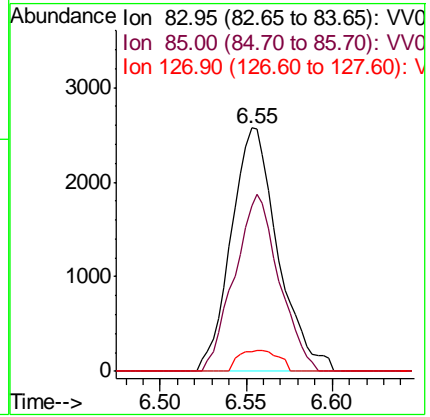
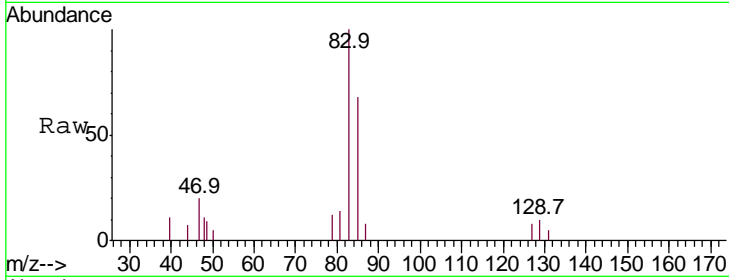




#38
 Bromodichloromethane
 Concen: 0.424 ug/L
 RT: 6.55 min Scan# 1699
 Delta R.T. -0.00 min
 Lab File: VV012275.D
 Acq: 19 Aug 2019 13:01

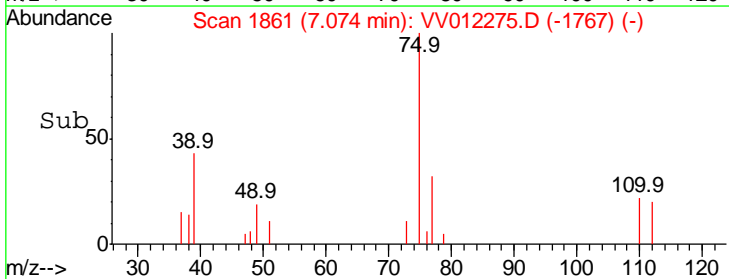
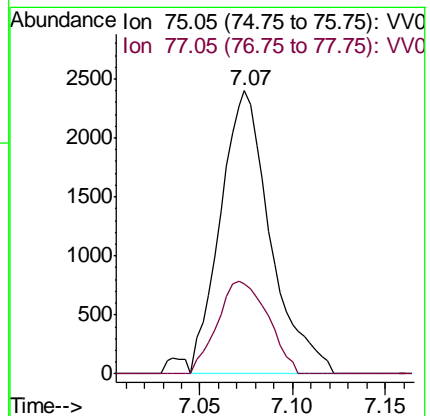
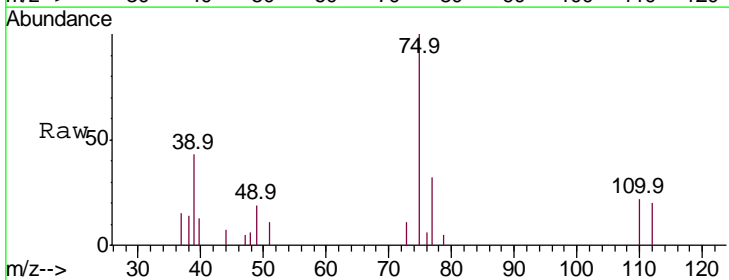
Instrument :
 MSVOA_V
 ClientSampled :

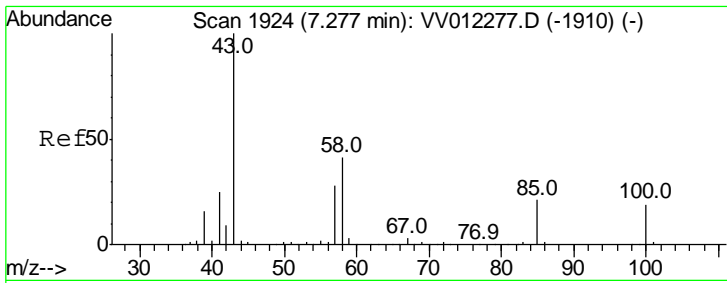
Tgt Ion	Resp	Lower	Upper
83	100		
85	68.1	44.5	82.7
127	7.8	8.9	13.3#



#39
 cis-1,3-Dichloropropene
 Concen: 0.370 ug/L
 RT: 7.07 min Scan# 1861
 Delta R.T. 0.00 min
 Lab File: VV012275.D
 Acq: 19 Aug 2019 13:01

Tgt Ion	Resp	Lower	Upper
75	100		
77	31.9	21.5	39.9

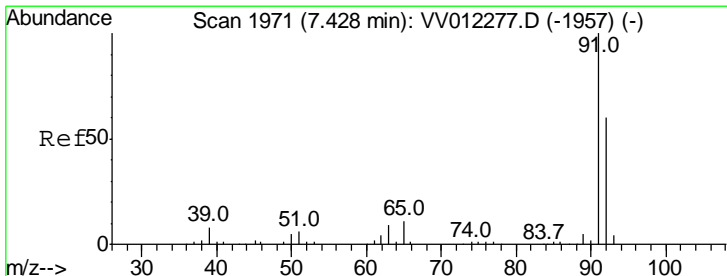
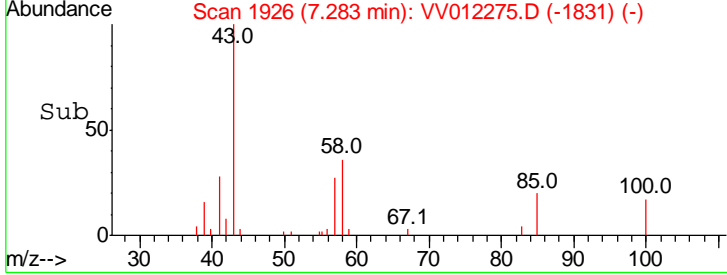
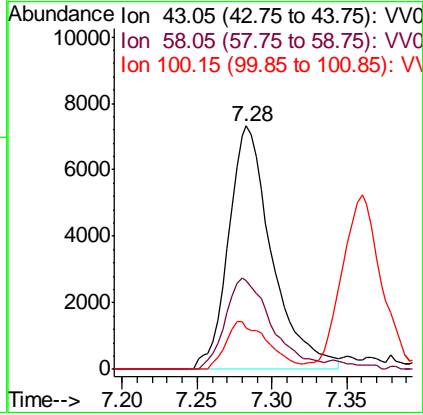
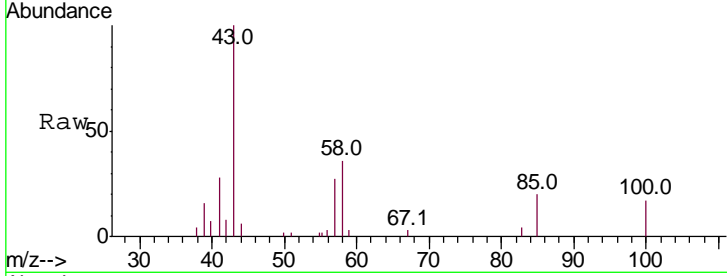




#40
 4-Methyl-2-pentanone
 Concen: 3.168 ug/L
 RT: 7.28 min Scan# 1926
 Delta R.T. 0.01 min
 Lab File: VV012275.D
 Acq: 19 Aug 2019 13:01

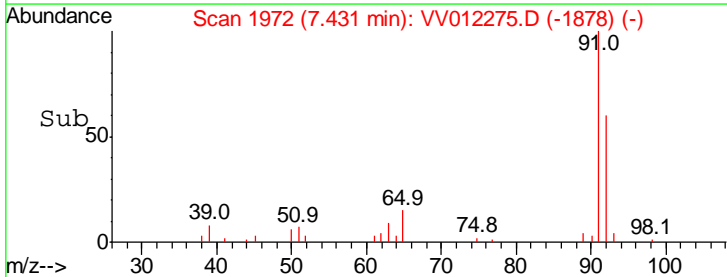
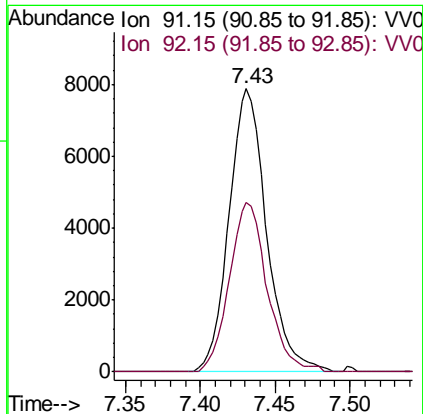
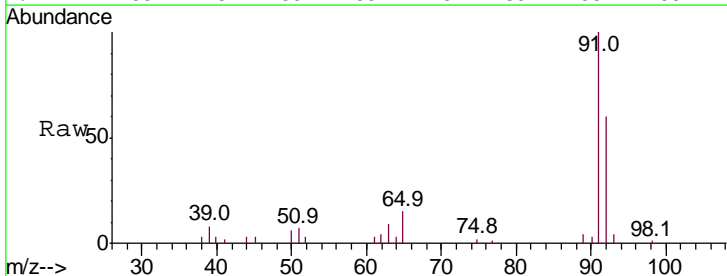
Instrument : MSVOA_V
 ClientSampled :

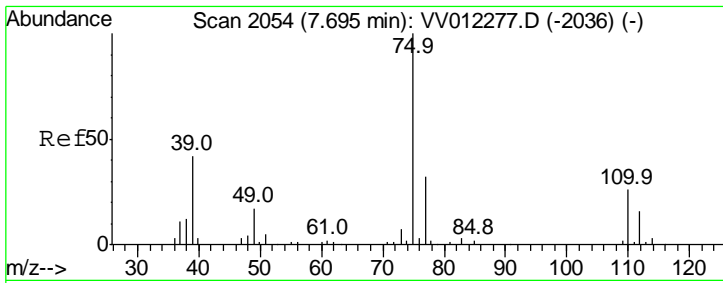
Tgt Ion	Resp	Lower	Upper
43	14788		
58	40.0	32.1	48.1
100	19.1	15.2	22.8



#42
 Toluene
 Concen: 0.369 ug/L
 RT: 7.43 min Scan# 1972
 Delta R.T. 0.00 min
 Lab File: VV012275.D
 Acq: 19 Aug 2019 13:01

Tgt Ion	Resp	Lower	Upper
91	13772		
92	59.7	41.6	77.3

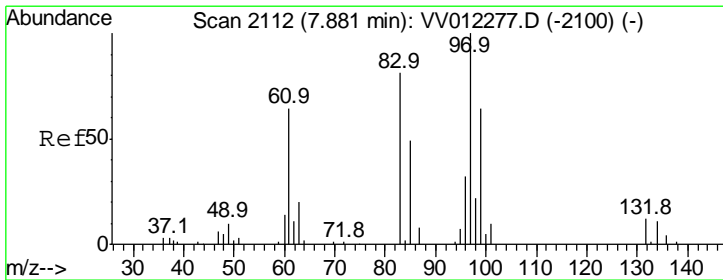
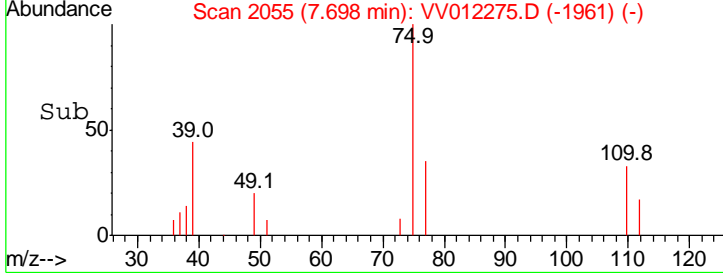
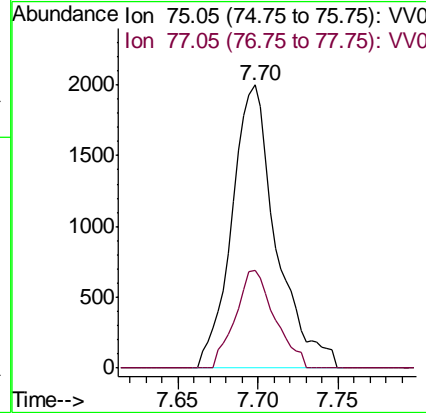
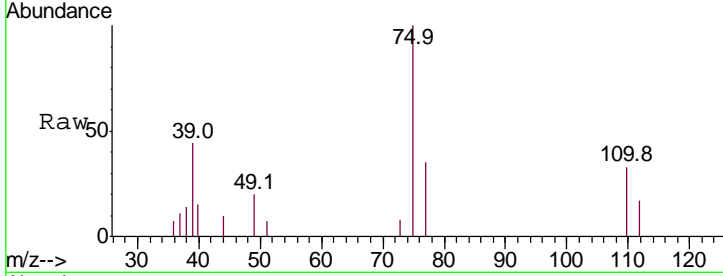




#44
 trans-1,3-Dichloropropene
 Concen: 0.390 ug/L
 RT: 7.70 min Scan# 2055
 Delta R.T. 0.00 min
 Lab File: VV012275.D
 Acq: 19 Aug 2019 13:01

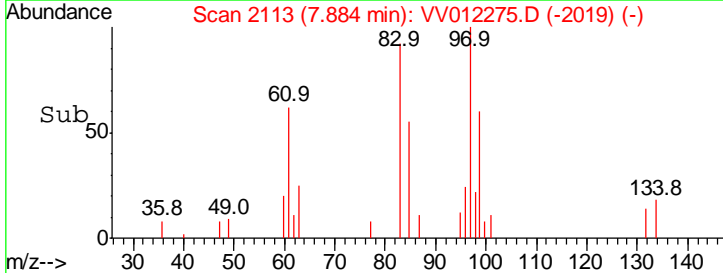
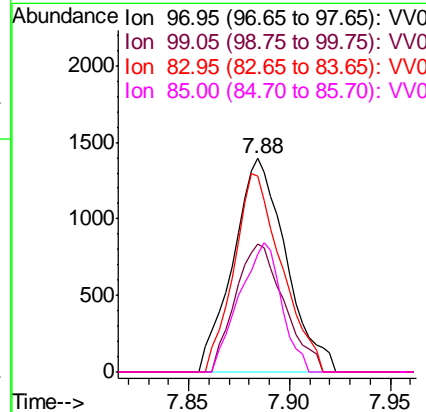
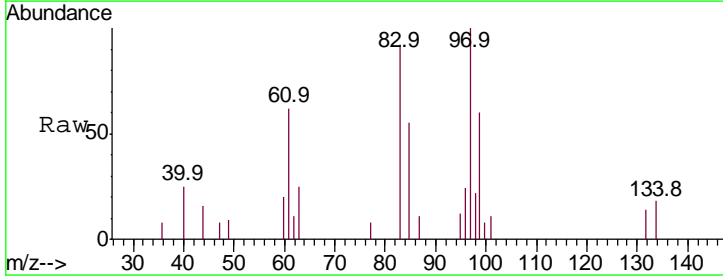
Instrument :
 MSVOA_V
 ClientSampled :

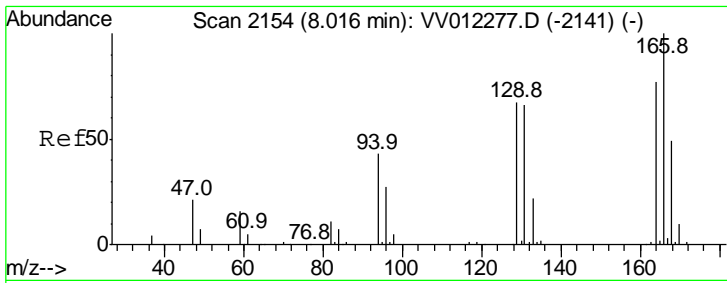
Tgt Ion	Resp	Lower	Upper
75	100		
77	34.7	22.1	41.1



#45
 1,1,2-Trichloroethane
 Concen: 0.434 ug/L
 RT: 7.88 min Scan# 2113
 Delta R.T. 0.00 min
 Lab File: VV012275.D
 Acq: 19 Aug 2019 13:01

Tgt Ion	Resp	Lower	Upper
97	100		
99	59.6	44.7	83.1
83	91.8	56.8	105.6
85	55.0	34.5	64.1





#47

Tetrachloroethene

Concen: 0.486 ug/L

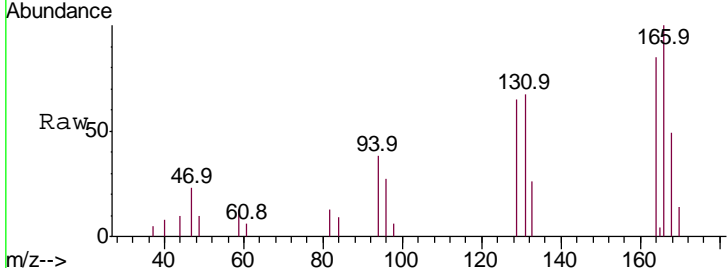
RT: 8.02 min Scan# 2154

Delta R.T. -0.00 min

Lab File: VV012275.D

Acq: 19 Aug 2019 13:01

Instrument :
MSVOA_V
ClientSampled :



Tot Ion:164 Resp: 3937

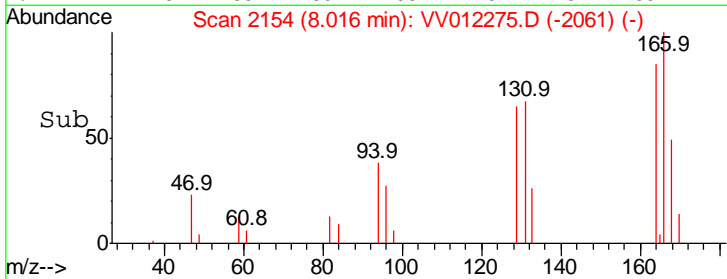
Ion Ratio Lower Upper

164 100

129 76.3 60.8 112.8

131 78.4 59.4 110.2

166 117.6 90.4 167.8

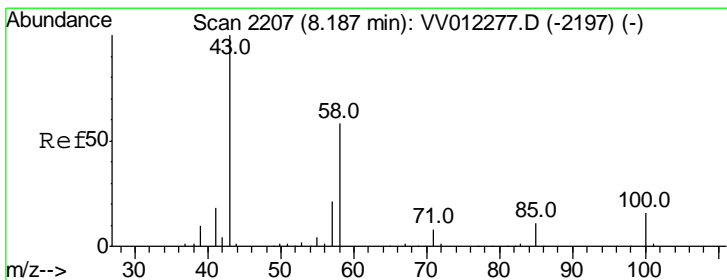
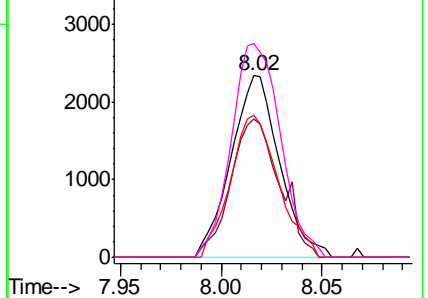


Abundance Ion 163.90 (163.60 to 164.60): V

Ion 128.95 (128.65 to 129.65): V

Ion 130.95 (130.65 to 131.65): V

Ion 165.90 (165.60 to 166.60): V



#48

2-Hexanone

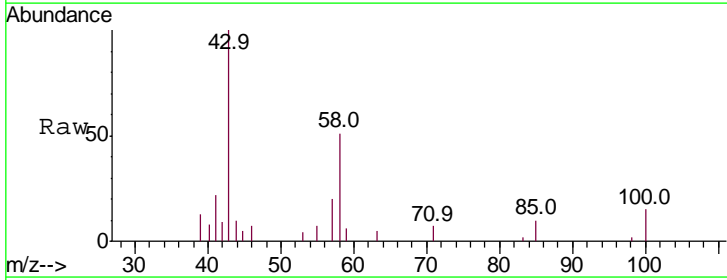
Concen: 3.405 ug/L

RT: 8.20 min Scan# 2210

Delta R.T. 0.01 min

Lab File: VV012275.D

Acq: 19 Aug 2019 13:01



Tgt Ion: 43 Resp: 11143

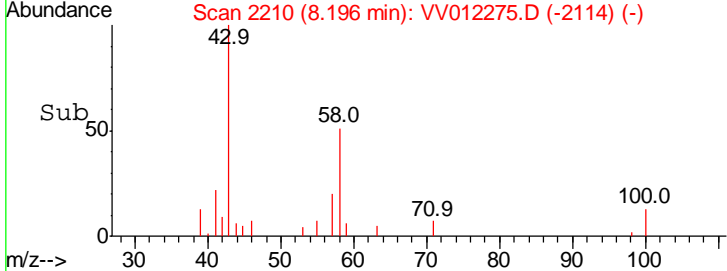
Ion Ratio Lower Upper

43 100

58 61.6 45.4 68.2

57 19.8 16.8 25.2

100 14.5 12.2 18.2

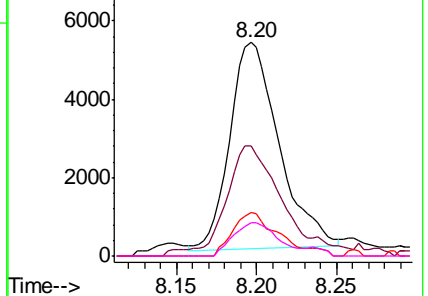


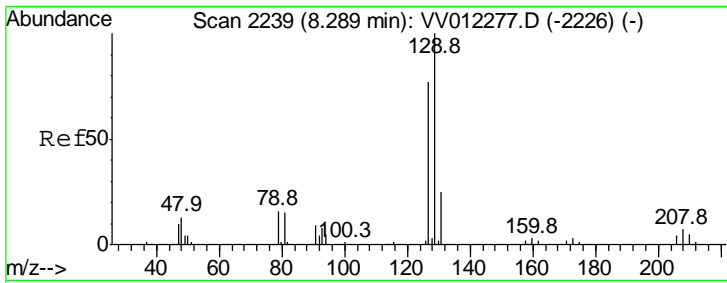
Abundance Ion 43.05 (42.75 to 43.75): VV0

Ion 58.05 (57.75 to 58.75): VV0

Ion 57.20 (56.90 to 57.90): VV0

Ion 100.15 (99.85 to 100.85): VV0

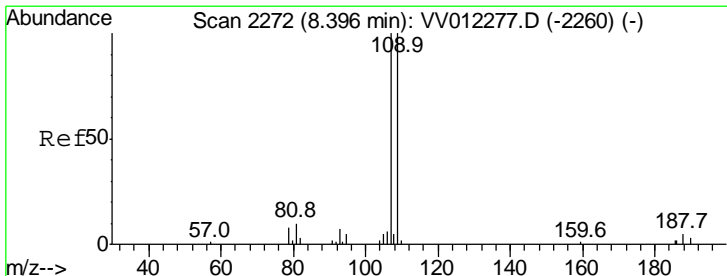
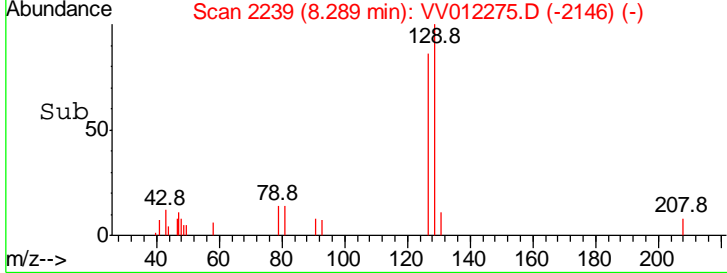
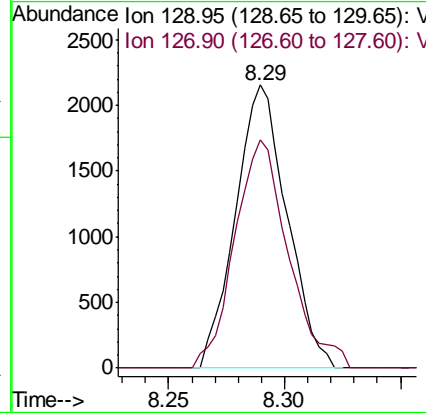
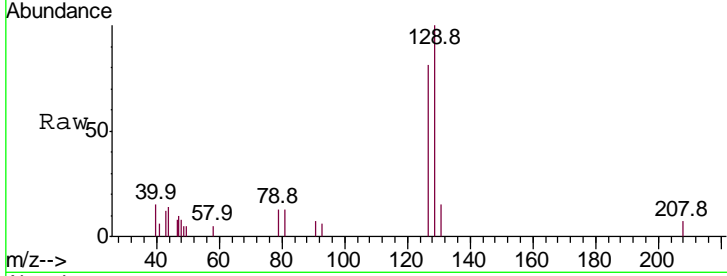




#49
 Dibromochloromethane
 Concen: 0.447 ug/L
 RT: 8.29 min Scan# 2239
 Delta R.T. -0.00 min
 Lab File: VV012275.D
 Acq: 19 Aug 2019 13:01

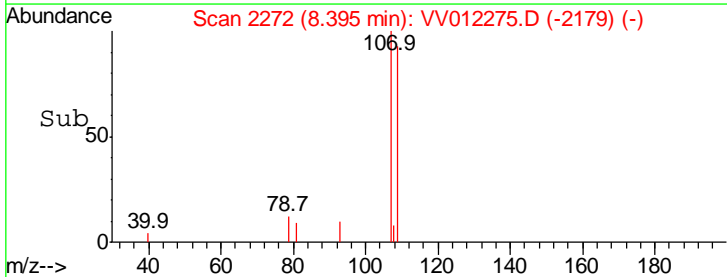
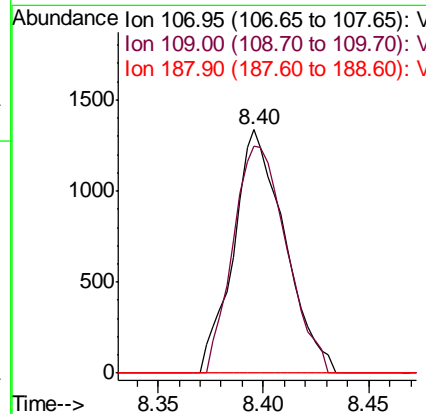
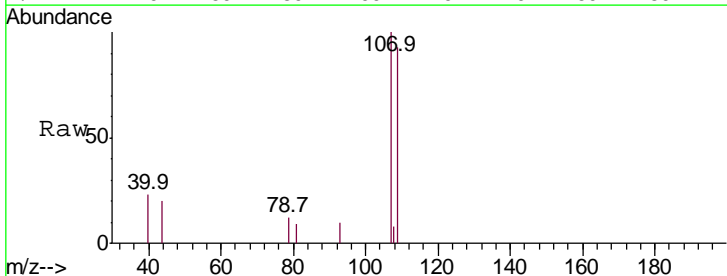
Instrument :
 MSVOA_V
 ClientSampled :

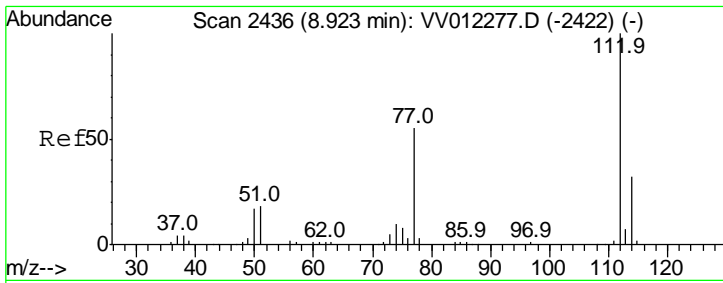
Tgt Ion	Resp	Lower	Upper
129	100		
127	80.9	53.9	100.1



#50
 1,2-Dibromoethane
 Concen: 0.400 ug/L
 RT: 8.40 min Scan# 2272
 Delta R.T. -0.00 min
 Lab File: VV012275.D
 Acq: 19 Aug 2019 13:01

Tgt Ion	Resp	Lower	Upper
107	100		
109	93.1	70.0	130.0
188	0.0	3.7	5.5#

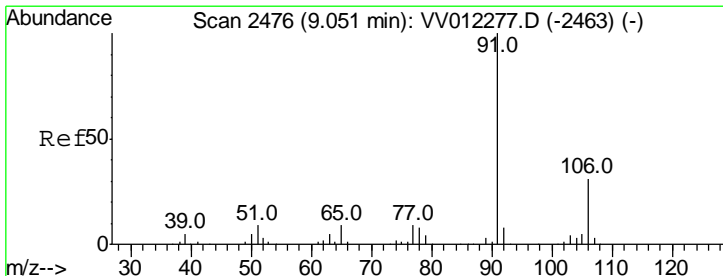
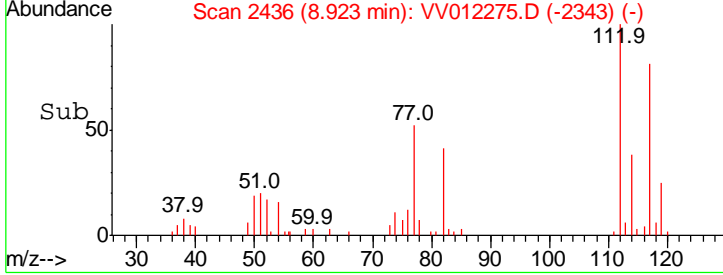
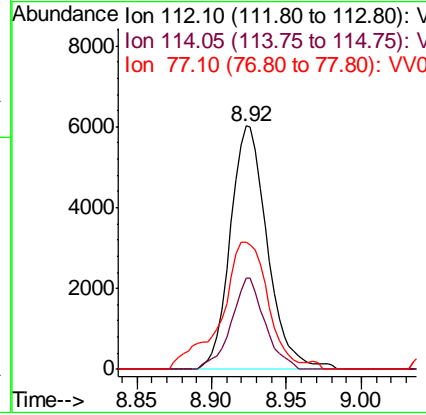
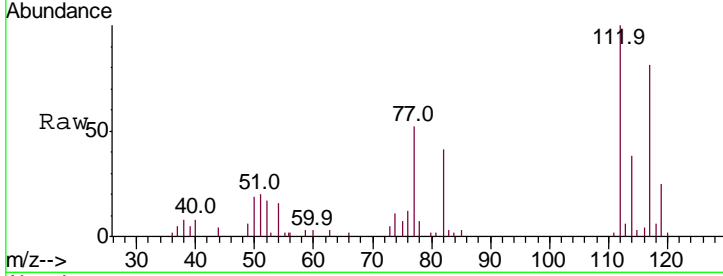




#51
 Chlorobenzene
 Concen: 0.425 ug/L
 RT: 8.92 min Scan# 2436
 Delta R.T. -0.00 min
 Lab File: VV012275.D
 Acq: 19 Aug 2019 13:01

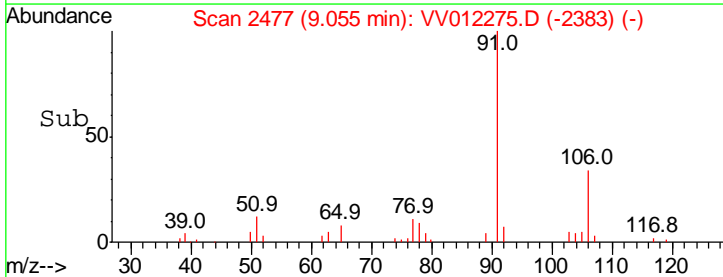
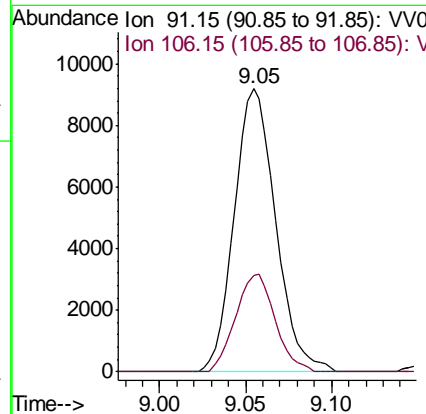
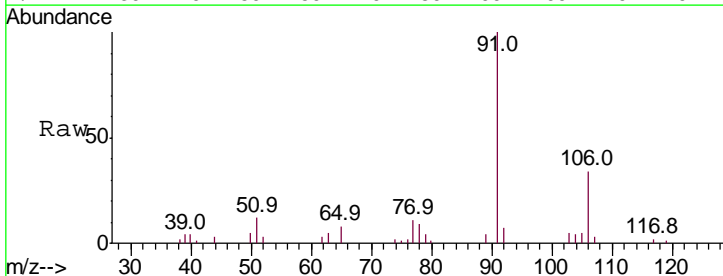
Instrument : MSVOA_V
 ClientSampled :

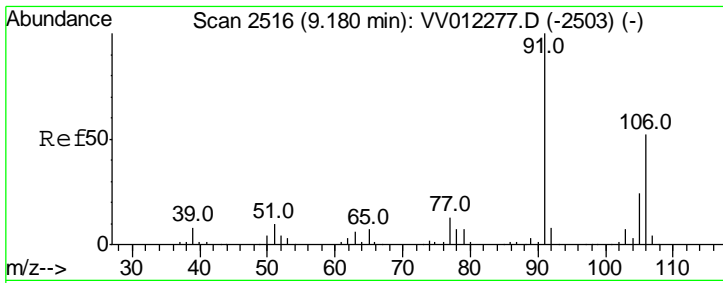
Tgt Ion	Resp	Lower	Upper
112	100		
114	37.6	22.3	41.5
77	52.1	43.9	65.9



#52
 Ethylbenzene
 Concen: 0.382 ug/L
 RT: 9.05 min Scan# 2477
 Delta R.T. 0.00 min
 Lab File: VV012275.D
 Acq: 19 Aug 2019 13:01

Tgt Ion	Resp	Lower	Upper
91	100		
106	34.2	21.6	40.0

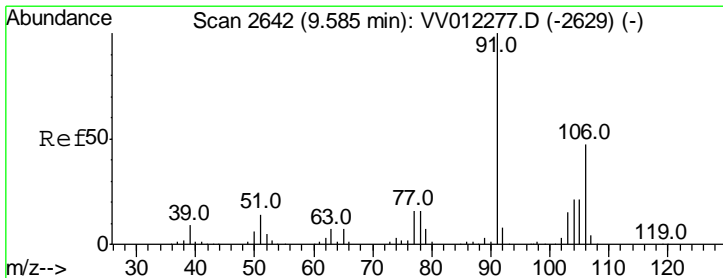
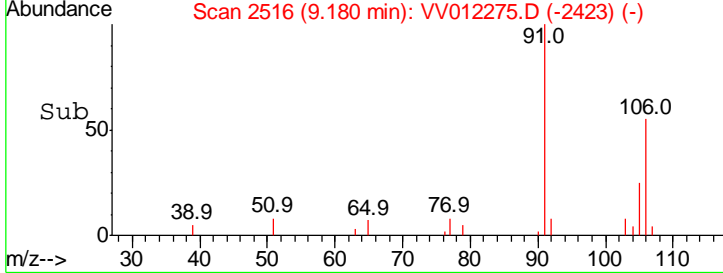
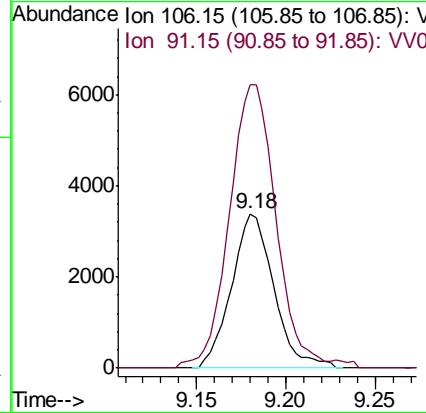
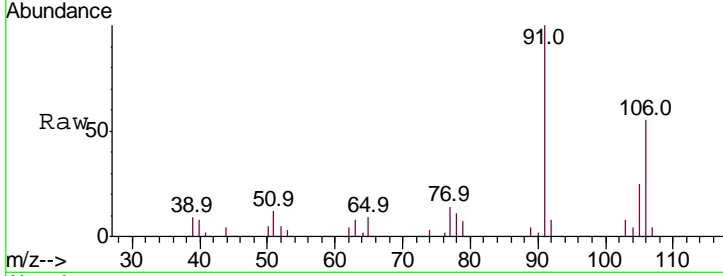




#53
 m,p-xylene
 Concen: 0.360 ug/L
 RT: 9.18 min Scan# 2516
 Delta R.T. -0.00 min
 Lab File: VV012275.D
 Acq: 19 Aug 2019 13:01

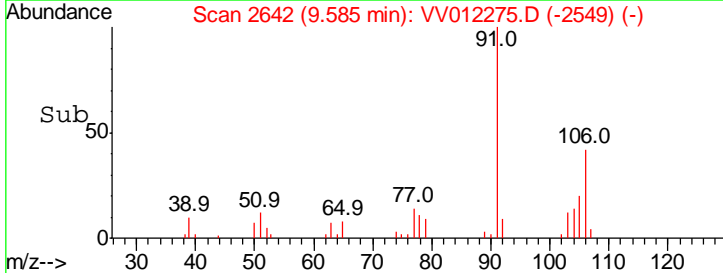
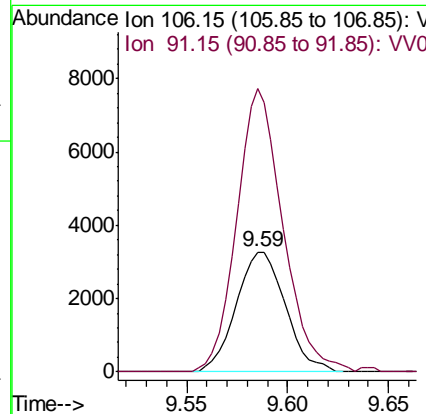
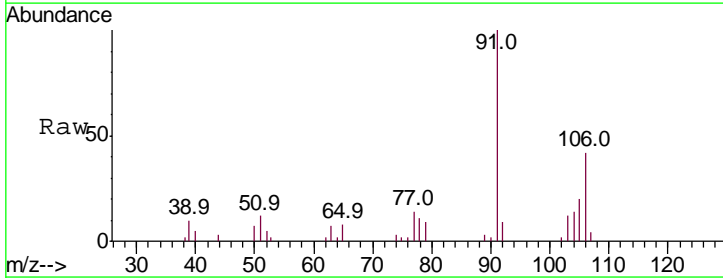
Instrument : MSVOA_V
 ClientSampled :

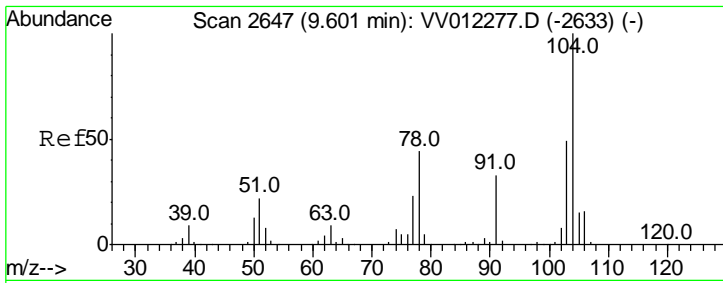
Tgt Ion:106 Resp: 5608
 Ion Ratio Lower Upper
 106 100
 91 183.1 136.0 252.6



#54
 o-xylene
 Concen: 0.379 ug/L
 RT: 9.59 min Scan# 2642
 Delta R.T. -0.00 min
 Lab File: VV012275.D
 Acq: 19 Aug 2019 13:01

Tgt Ion:106 Resp: 5582
 Ion Ratio Lower Upper
 106 100
 91 235.7 148.7 276.1

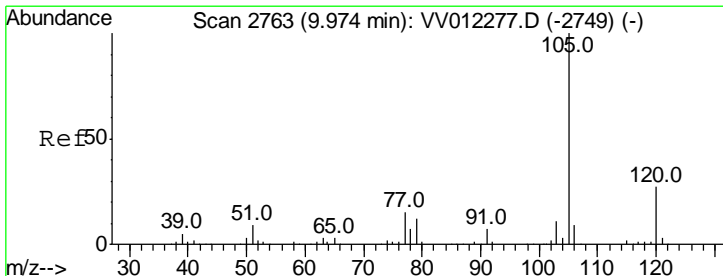
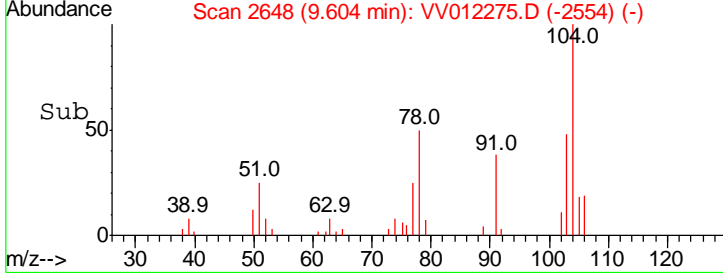
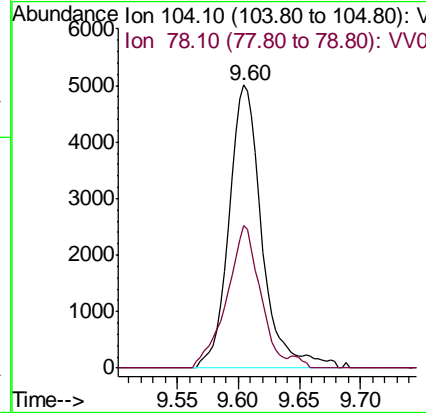
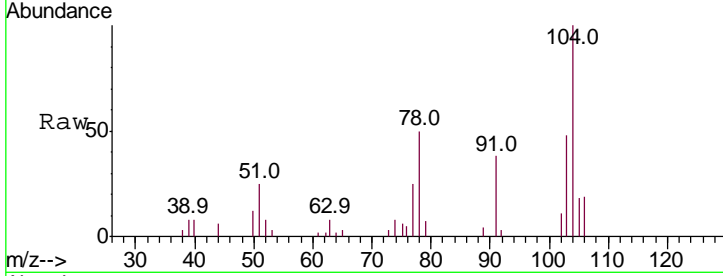




#55
 Styrene
 Concen: 0.385 ug/L
 RT: 9.60 min Scan# 2648
 Delta R.T. 0.00 min
 Lab File: VV012275.D
 Acq: 19 Aug 2019 13:01

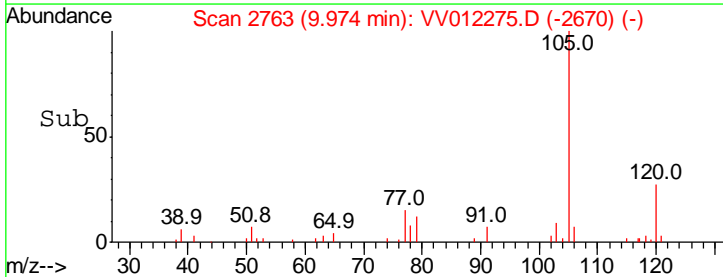
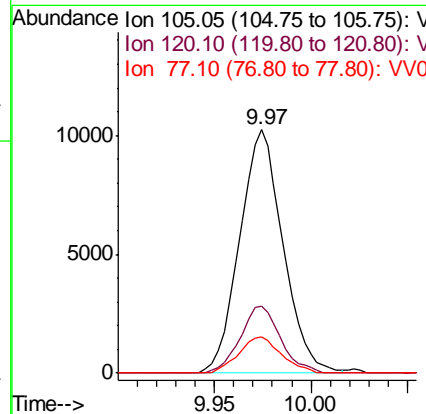
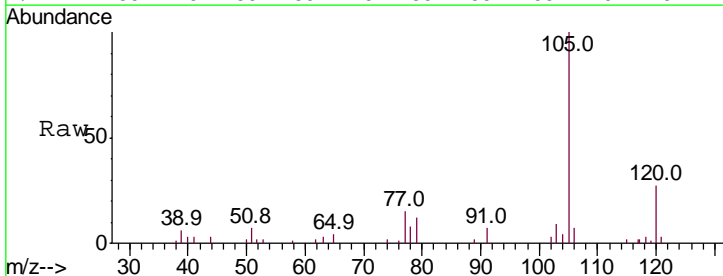
Instrument :
 MSVOA_V
 ClientSampled :

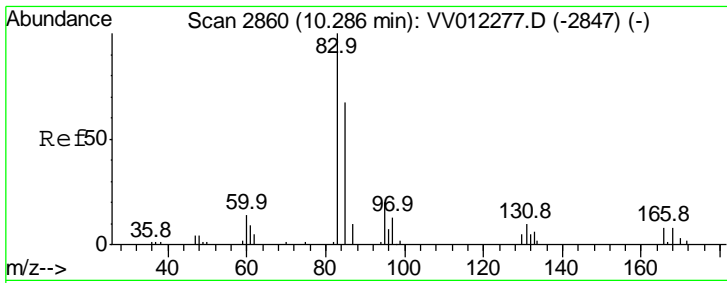
Tgt Ion	Resp	Lower	Upper
104	100		
78	50.5	30.8	57.2



#56
 Isopropylbenzene
 Concen: 0.402 ug/L
 RT: 9.97 min Scan# 2763
 Delta R.T. -0.00 min
 Lab File: VV012275.D
 Acq: 19 Aug 2019 13:01

Tgt Ion	Resp	Lower	Upper
105	100		
120	25.5	21.4	32.0
77	14.6	12.2	18.2

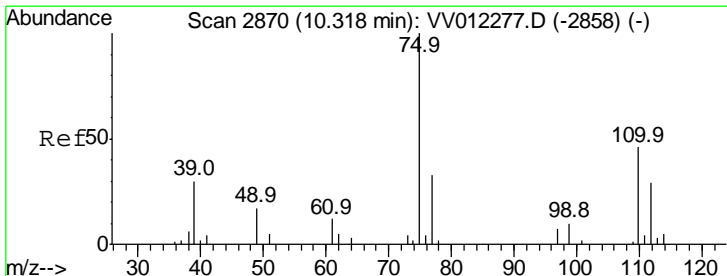
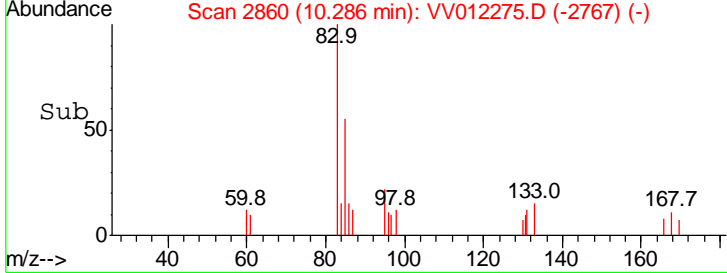
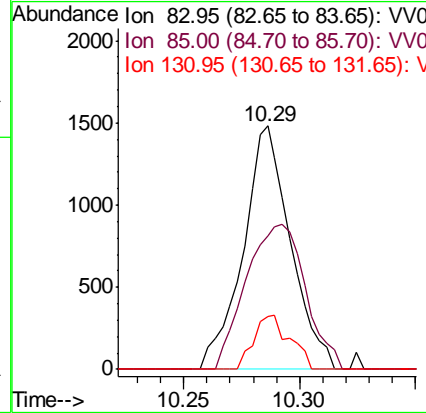
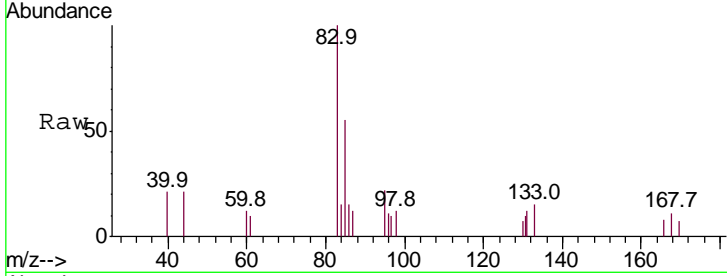




#58
 1,1,2,2-Tetrachloroethane
 Concen: 0.316 ug/L
 RT: 10.29 min Scan# 2860
 Delta R.T. -0.00 min
 Lab File: VV012275.D
 Acq: 19 Aug 2019 13:01

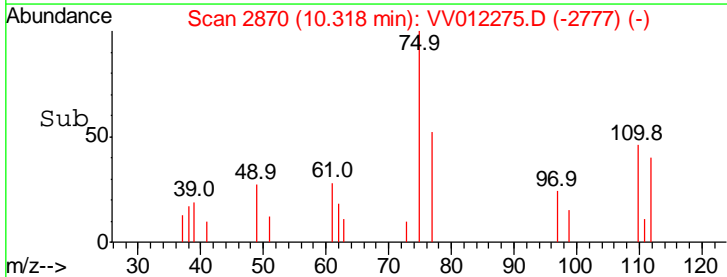
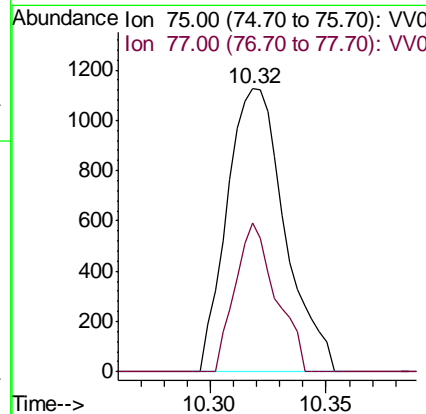
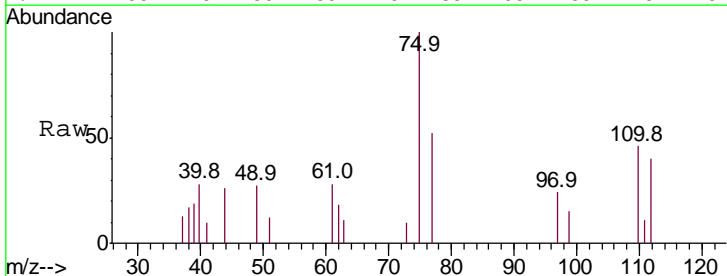
Instrument : MSVOA_V
 ClientSampled :

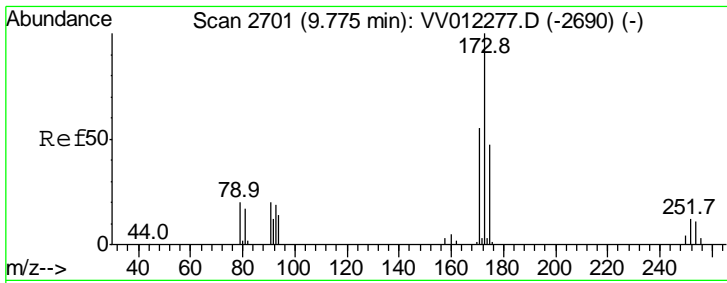
Tgt Ion	Resp	Lower	Upper
83	100		
85	54.7	47.0	87.2
131	21.9	9.0	13.4#



#59
 1,2,3-Trichloropropane
 Concen: 0.394 ug/L
 RT: 10.32 min Scan# 2870
 Delta R.T. -0.00 min
 Lab File: VV012275.D
 Acq: 19 Aug 2019 13:01

Tgt Ion	Resp	Lower	Upper
75	100		
77	36.8	25.8	38.8

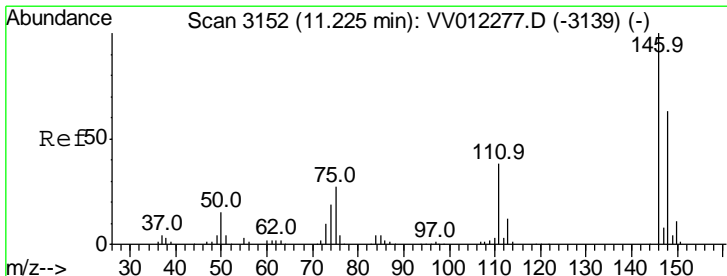
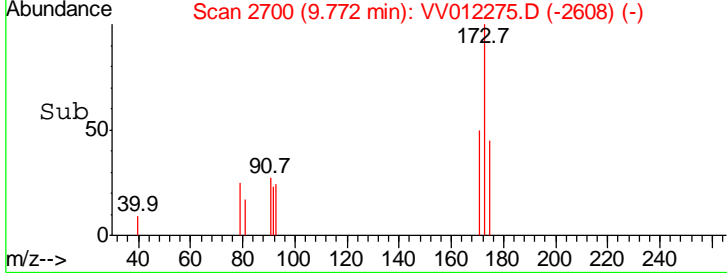
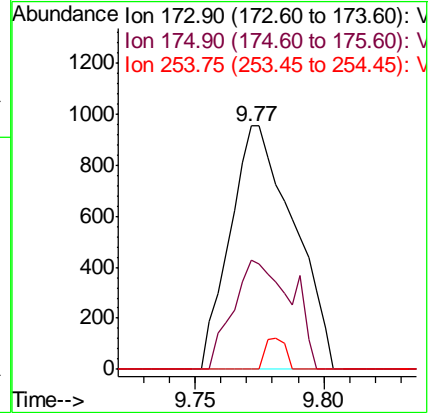
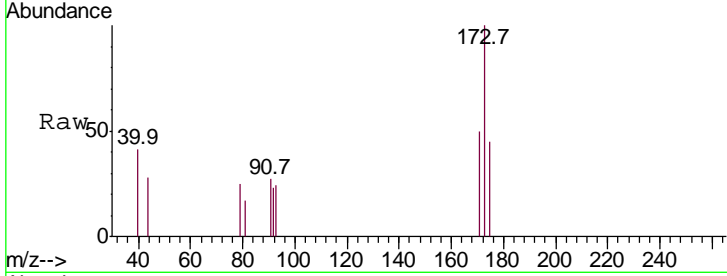




#61
 Bromoform
 Concen: 0.426 ug/L
 RT: 9.77 min Scan# 2700
 Delta R.T. -0.00 min
 Lab File: VV012275.D
 Acq: 19 Aug 2019 13:01

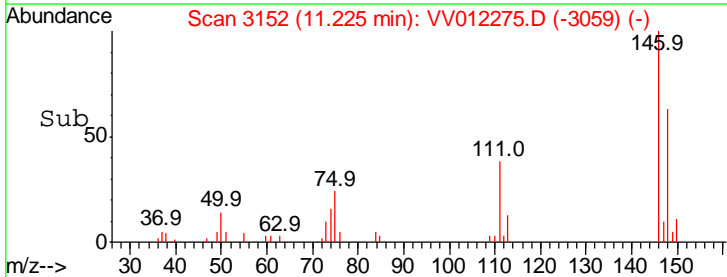
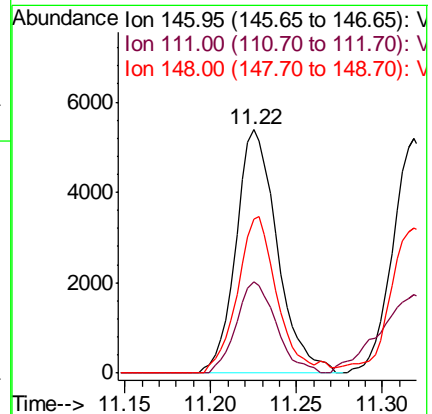
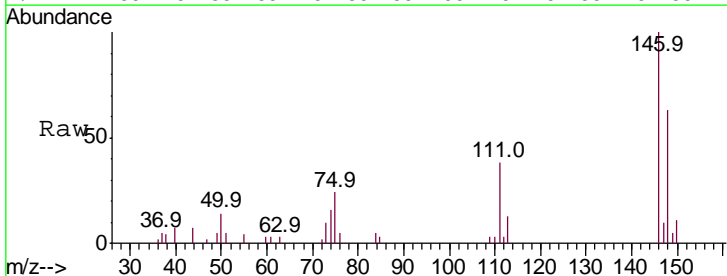
Instrument :
 MSVOA_V
 ClientSampled :

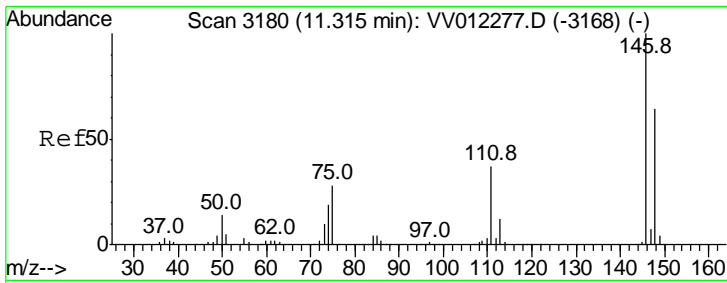
Tgt Ion	Resp	Lower	Upper
173	100		
175	40.9	38.9	58.3
254	4.0	9.0	13.6#



#62
 1,3-Dichlorobenzene
 Concen: 0.457 ug/L
 RT: 11.22 min Scan# 3152
 Delta R.T. -0.00 min
 Lab File: VV012275.D
 Acq: 19 Aug 2019 13:01

Tgt Ion	Resp	Lower	Upper
146	100		
111	37.7	26.8	49.8
148	63.1	44.0	81.8

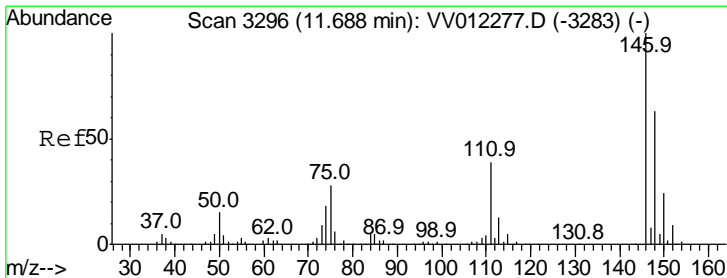
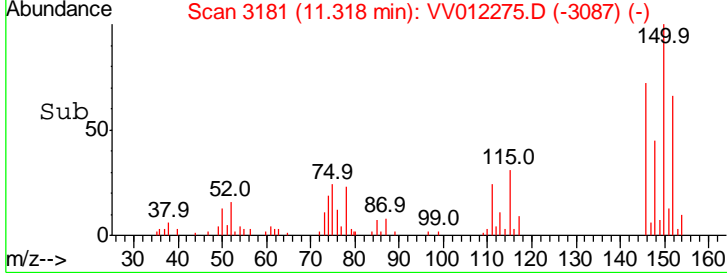
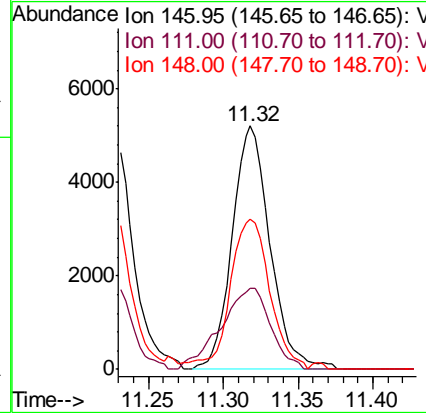
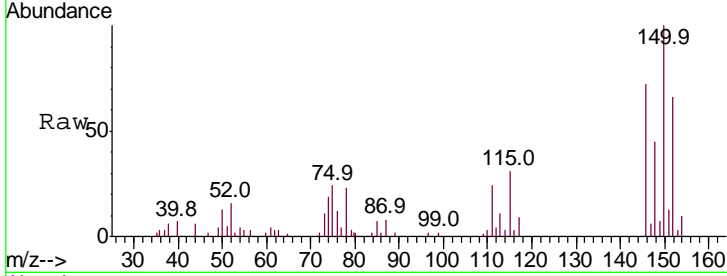




#63
 1,4-Dichlorobenzene
 Concen: 0.466 ug/L
 RT: 11.32 min Scan# 3181
 Delta R.T. 0.00 min
 Lab File: VV012275.D
 Acq: 19 Aug 2019 13:01

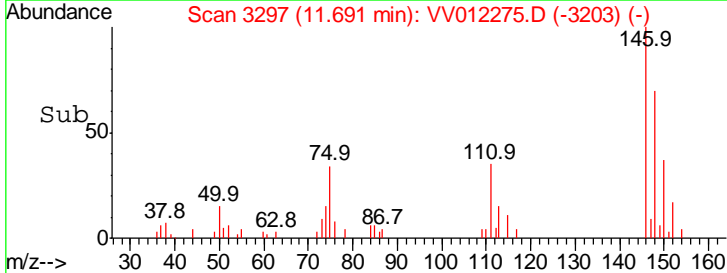
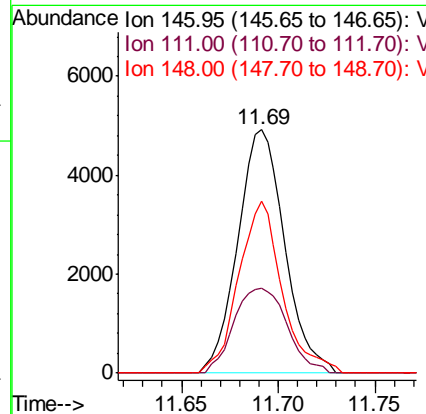
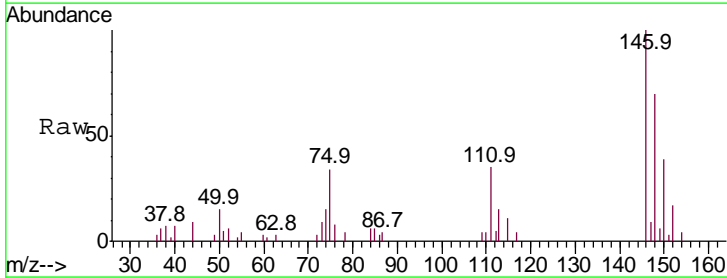
Instrument : MSVOA_V
 ClientSampled :

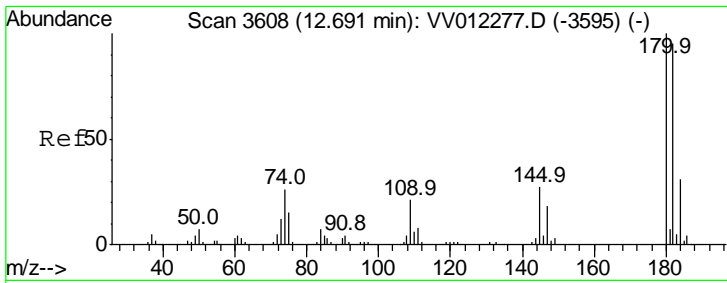
Tgt Ion	Resp	Lower	Upper
146	100		
111	33.1	26.2	48.6
148	61.9	45.3	84.1



#65
 1,2-Dichlorobenzene
 Concen: 0.458 ug/L
 RT: 11.69 min Scan# 3297
 Delta R.T. 0.00 min
 Lab File: VV012275.D
 Acq: 19 Aug 2019 13:01

Tgt Ion	Resp	Lower	Upper
146	100		
111	34.7	31.4	47.0
148	70.4	50.8	76.2

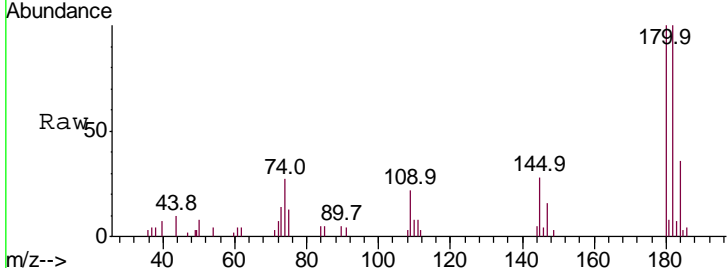




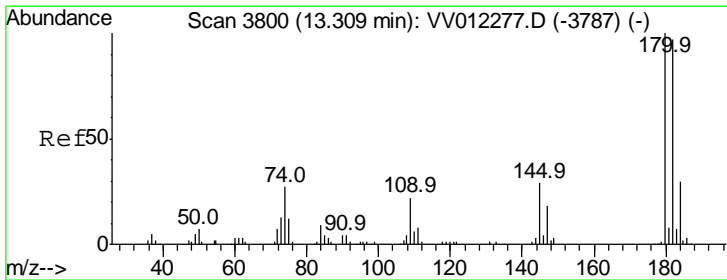
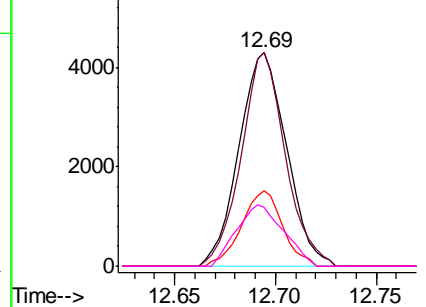
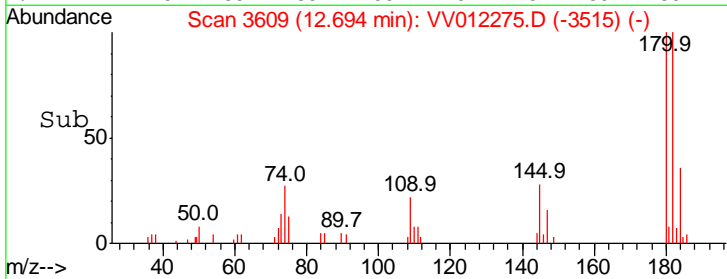
#67
 1,3,5-Trichlorobenzene
 Concen: 0.468 ug/L
 RT: 12.69 min Scan# 3609
 Delta R.T. 0.00 min
 Lab File: VV012275.D
 Acq: 19 Aug 2019 13:01

Instrument : MSVOA_V
 ClientSampled :

Tgt Ion	Resp	Lower	Upper
180	100		
182	92.7	75.9	113.9
184	30.6	24.6	36.8
145	28.4	22.6	33.8

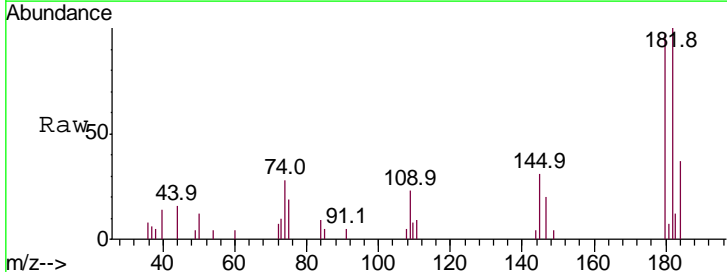


Abundance Ion 180.00 (179.70 to 180.70): V
 Ion 182.00 (181.70 to 182.70): V
 Ion 184.00 (183.70 to 184.70): V
 Ion 145.00 (144.70 to 145.70): V

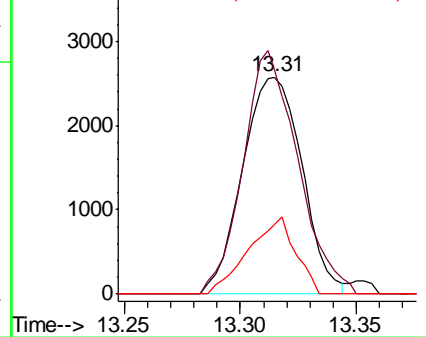
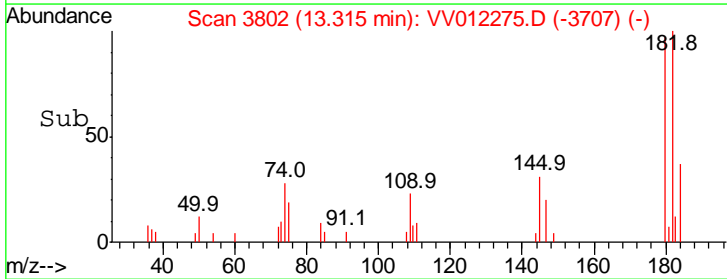


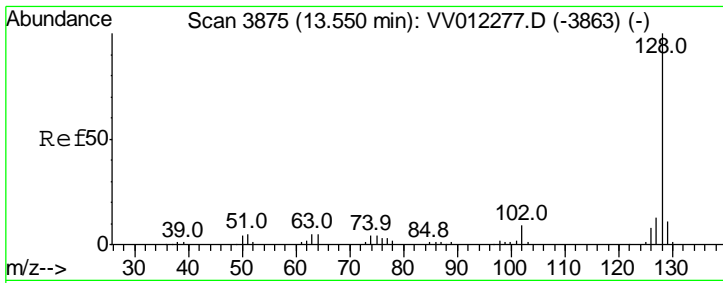
#68
 1,2,4-trichlorobenzene
 Concen: 0.406 ug/L
 RT: 13.31 min Scan# 3802
 Delta R.T. 0.01 min
 Lab File: VV012275.D
 Acq: 19 Aug 2019 13:01

Tgt Ion	Resp	Lower	Upper
180	100		
182	103.4	77.2	115.8
145	28.1	22.6	33.8



Abundance Ion 179.90 (179.60 to 180.60): V
 Ion 182.00 (181.70 to 182.70): V
 Ion 144.95 (144.65 to 145.65): V

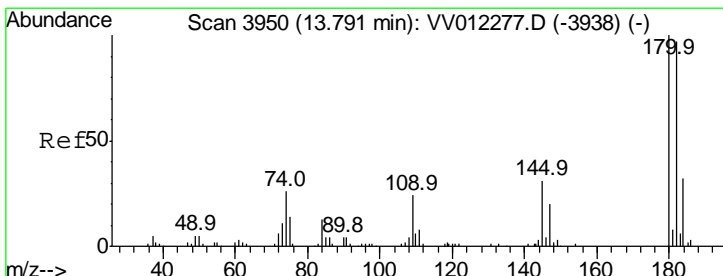
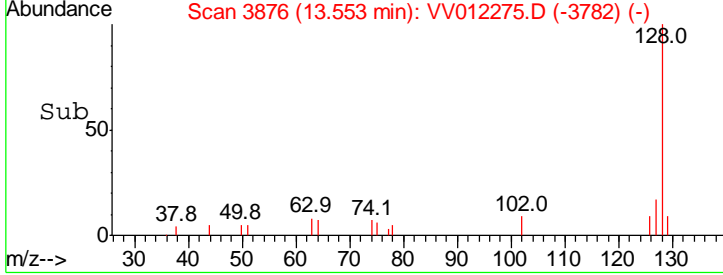
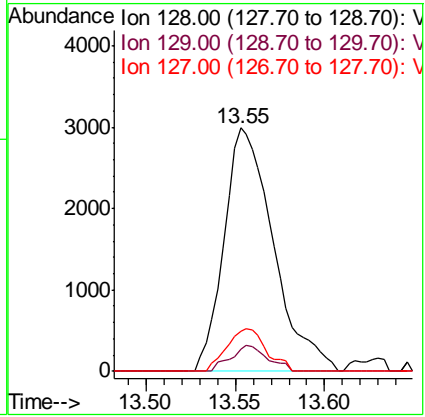
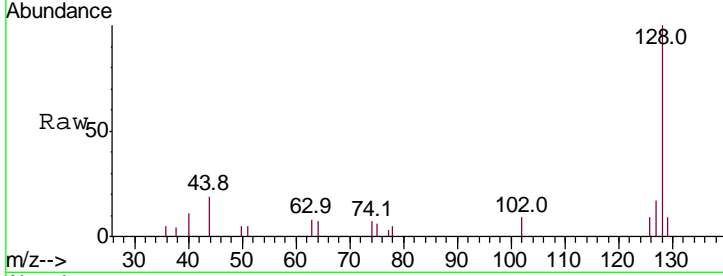




#69
 Naphthalene
 Concen: 0.362 ug/L
 RT: 13.55 min Scan# 3876
 Delta R.T. 0.00 min
 Lab File: VV012275.D
 Acq: 19 Aug 2019 13:01

Instrument : MSVOA_V
 ClientSampled :

Tgt Ion	Resp	Lower	Upper
128	100		
129	7.9	8.7	13.1#
127	14.0	10.5	15.7



#70
 1,2,3-Trichlorobenzene
 Concen: 0.419 ug/L
 RT: 13.79 min Scan# 3950
 Delta R.T. -0.00 min
 Lab File: VV012275.D
 Acq: 19 Aug 2019 13:01

Tgt Ion	Resp	Lower	Upper
180	100		
182	96.1	75.9	113.9
145	31.3	24.1	36.1

