

Data Path : Z:\voasrv\HPCHEM1\MSVOA_V\Data\VW081922\
 Data File : VW027444.D
 Acq On : 19 Aug 2022 16:44
 Operator : SY/MD
 Sample : N4253-02
 Misc : 25.0mL/MSVOA_V/WATER
 ALS Vial : 19 Sample Multiplier: 1

Instrument :
 MSVOA_V
 ClientSampleId :
 EX9D8

Quant Time: Aug 20 06:06:01 2022
 Quant Method : Z:\voasrv\HPCHEM1\MSVOA_V\Method\SFAMVTR081922WMA.M
 Quant Title : TRACE VOA SFAM1.0
 QLast Update : Sat Aug 20 05:55:43 2022
 Response via : Initial Calibration

Compound	R.T.	QIon	Response	Conc	Units	Dev(Min)

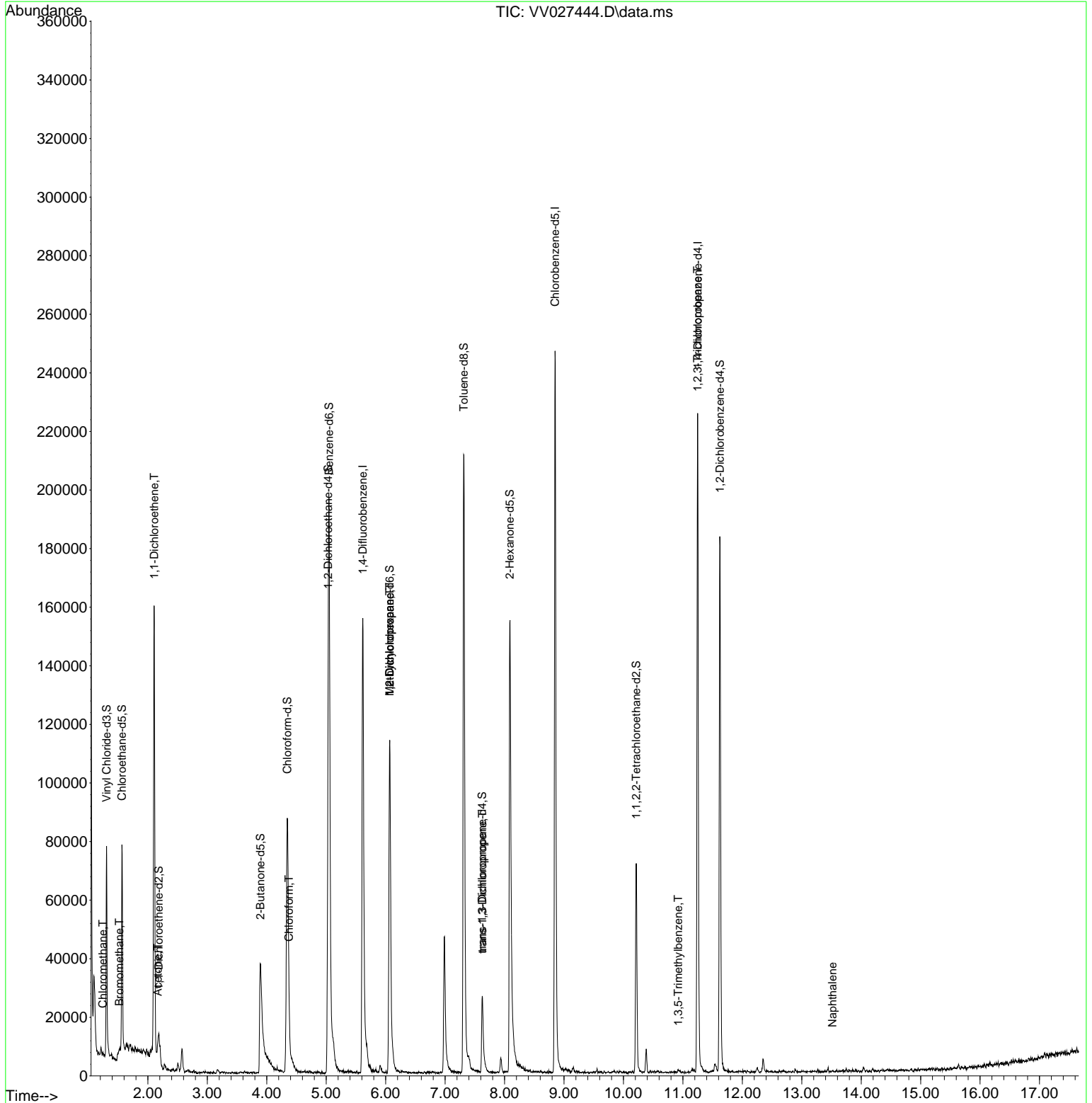
Internal Standards						
1) 1,4-Difluorobenzene	5.616	114	130916	5.000	ug/L	0.00
28) Chlorobenzene-d5	8.850	117	134832	5.000	ug/L	0.00
58) 1,4-Dichlorobenzene-d4	11.249	152	58425	5.000	ug/L	0.00
System Monitoring Compounds						
4) Vinyl Chloride-d3	1.304	65	47916	5.143	ug/L	0.00
Spiked Amount	5.000	Range 40 - 130	Recovery	=	102.800%	
7) Chloroethane-d5	1.564	69	44934	6.589	ug/L	0.00
Spiked Amount	5.000	Range 65 - 130	Recovery	=	131.800%#	
11) 1,1-Dichloroethene-d2	2.182	63	5469	0.252	ug/L	0.07
Spiked Amount	5.000	Range 60 - 125	Recovery	=	5.000%#	
20) 2-Butanone-d5	3.892	46	78006	67.273	ug/L	0.00
Spiked Amount	50.000	Range 40 - 130	Recovery	=	134.540%#	
24) Chloroform-d	4.346	84	89469	4.802	ug/L	0.00
Spiked Amount	5.000	Range 70 - 125	Recovery	=	96.000%	
26) 1,2-Dichloroethane-d4	5.034	65	46171	5.729	ug/L	0.00
Spiked Amount	5.000	Range 70 - 130	Recovery	=	114.600%	
32) Benzene-d6	5.050	84	187434	5.019	ug/L	0.00
Spiked Amount	5.000	Range 70 - 125	Recovery	=	100.400%	
36) 1,2-Dichloropropane-d6	6.069	67	57355	5.282	ug/L	0.00
Spiked Amount	5.000	Range 60 - 140	Recovery	=	105.600%	
41) Toluene-d8	7.317	98	148131	4.393	ug/L	0.00
Spiked Amount	5.000	Range 70 - 130	Recovery	=	87.800%	
43) trans-1,3-Dichloroprop...	7.625	79	16900	4.546	ug/L	0.00
Spiked Amount	5.000	Range 55 - 130	Recovery	=	91.000%	
46) 2-Hexanone-d5	8.088	63	55121	45.041	ug/L	0.00
Spiked Amount	50.000	Range 45 - 130	Recovery	=	90.080%	
56) 1,1,2,2-Tetrachloroeth...	10.217	84	33418	4.833	ug/L	0.00
Spiked Amount	5.000	Range 65 - 120	Recovery	=	96.600%	
66) 1,2-Dichlorobenzene-d4	11.622	152	45296	5.230	ug/L	0.00
Spiked Amount	5.000	Range 80 - 120	Recovery	=	104.600%	
Target Compounds						
						Qvalue
3) Chloromethane	1.243	50	662	0.055	ug/L	97
6) Bromomethane	1.519	94	694	0.115	ug/L	76
12) 1,1-Dichloroethene	2.108	96	943	0.095	ug/L #	1
13) Acetone	2.169	43	5981	5.401	ug/L	81
25) Chloroform	4.375	83	5604	0.244	ug/L	99
35) Methylcyclohexane	6.069	83	14621	0.881	ug/L #	15
37) 1,2-Dichloropropane	6.069	63	6473	0.542	ug/L #	85
44) trans-1,3-Dichloropropene	7.628	75	993	0.082	ug/L	89
61) 1,2,3-Trichloropropane	11.246	75	6954	1.357	ug/L #	70
62) 1,3,5-Trimethylbenzene	10.921	105	571	0.054	ug/L	88
71) Naphthalene	13.519	128	834	0.059	ug/L #	75

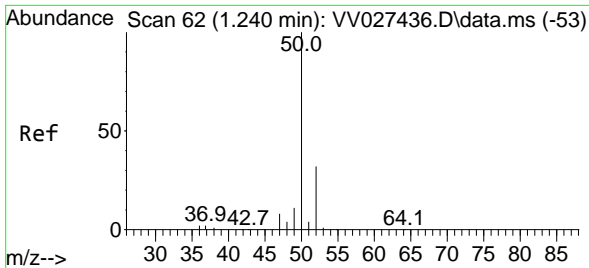
(#) = qualifier out of range (m) = manual integration (+) = signals summed

Data Path : Z:\voasrv\HPCHEM1\MSVOA_V\Data\VV081922\
 Data File : VV027444.D
 Acq On : 19 Aug 2022 16:44
 Operator : SY/MD
 Sample : N4253-02
 Misc : 25.0mL/MSVOA_V/WATER
 ALS Vial : 19 Sample Multiplier: 1

Instrument :
 MSVOA_V
 ClientSampleId :
 EX9D8

Quant Time: Aug 20 06:06:01 2022
 Quant Method : Z:\voasrv\HPCHEM1\MSVOA_V\Method\SFAMVTR081922WMA.M
 Quant Title : TRACE VOA SFAM1.0
 QLast Update : Sat Aug 20 05:55:43 2022
 Response via : Initial Calibration

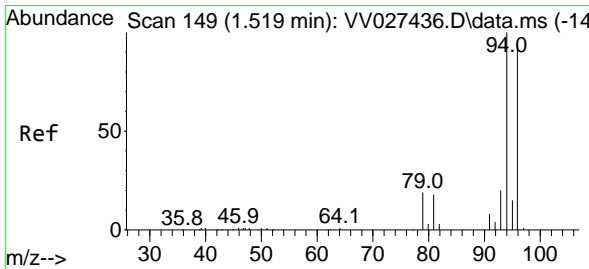
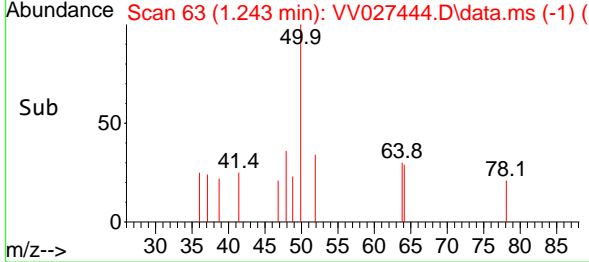
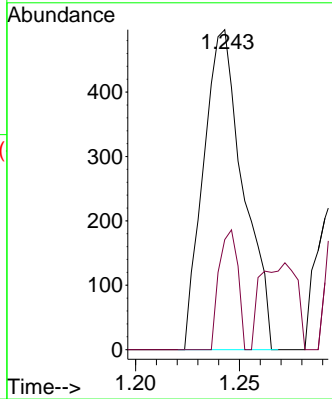
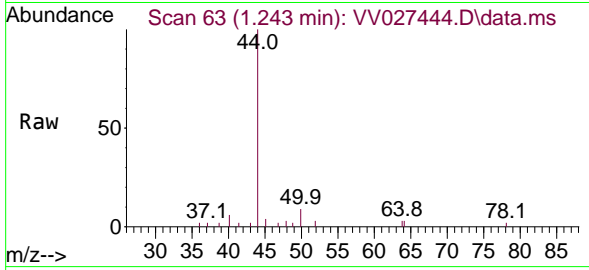




#3
 Chloromethane
 Concen: 0.055 ug/L
 RT: 1.243 min Scan# 61
 Delta R.T. 0.003 min
 Lab File: VV027444.D
 Acq: 19 Aug 2022 16:44

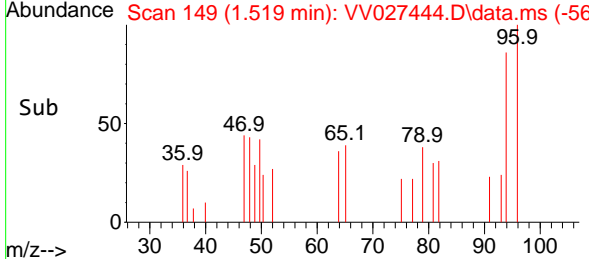
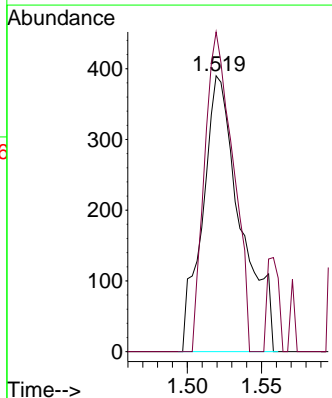
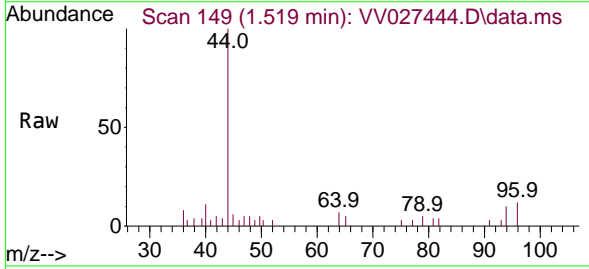
Instrument : MSVOA_V
 ClientSampleId : EX9D8

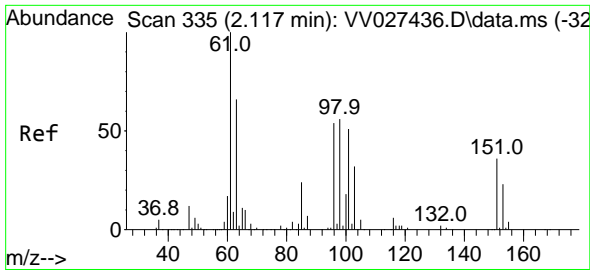
Tgt Ion: 50 Resp: 662
 Ion Ratio Lower Upper
 50 100
 52 34.4 22.8 42.4



#6
 Bromomethane
 Concen: 0.115 ug/L
 RT: 1.519 min Scan# 149
 Delta R.T. -0.000 min
 Lab File: VV027444.D
 Acq: 19 Aug 2022 16:44

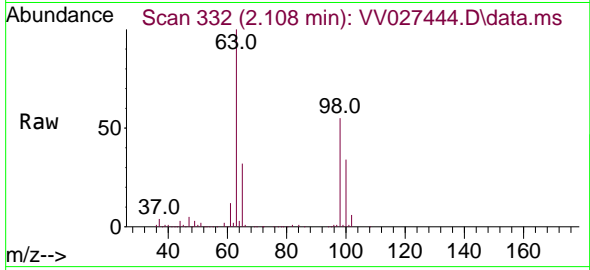
Tgt Ion: 94 Resp: 694
 Ion Ratio Lower Upper
 94 100
 96 115.9 65.2 121.0



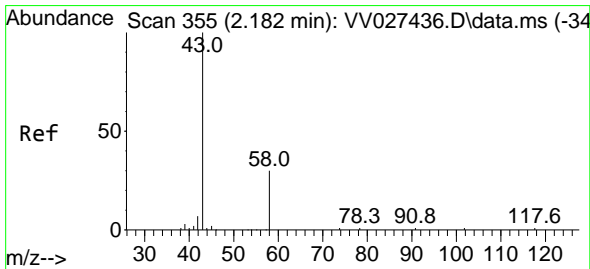
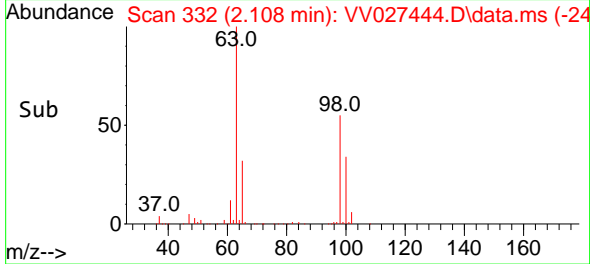
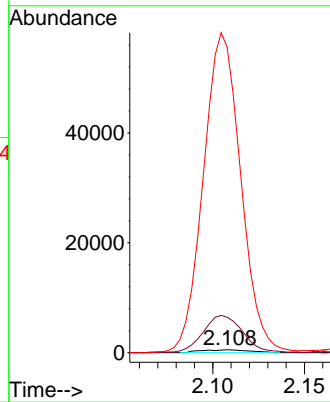


#12
 1,1-Dichloroethene
 Concen: 0.095 ug/L
 RT: 2.108 min Scan# 311
 Delta R.T. -0.010 min
 Lab File: VV027444.D
 Acq: 19 Aug 2022 16:44

Instrument :
 MSVOA_V
 ClientSampleId :
 EX9D8

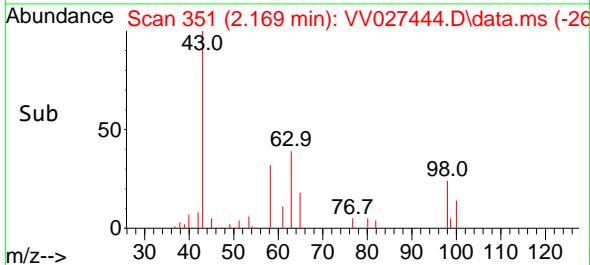
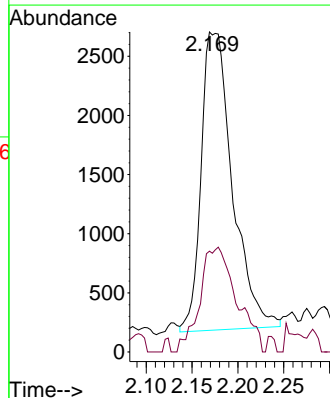
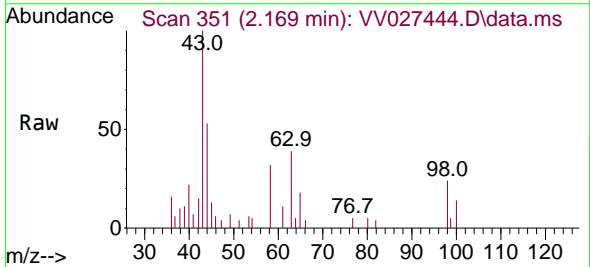


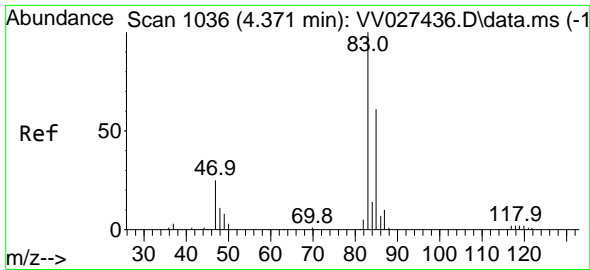
Tgt Ion: 96 Resp: 943
 Ion Ratio Lower Upper
 96 100
 61 1242.4 130.2 241.8#
 63 10684.1 87.4 162.4#



#13
 Acetone
 Concen: 5.401 ug/L
 RT: 2.169 min Scan# 351
 Delta R.T. -0.013 min
 Lab File: VV027444.D
 Acq: 19 Aug 2022 16:44

Tgt Ion: 43 Resp: 5981
 Ion Ratio Lower Upper
 43 100
 58 41.3 0.0 62.2

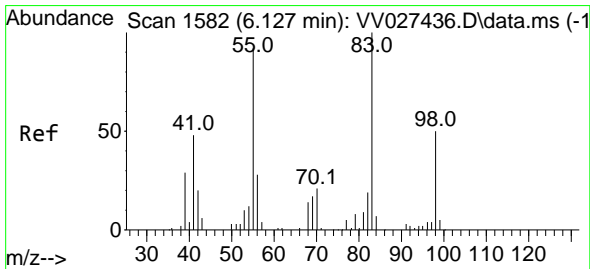
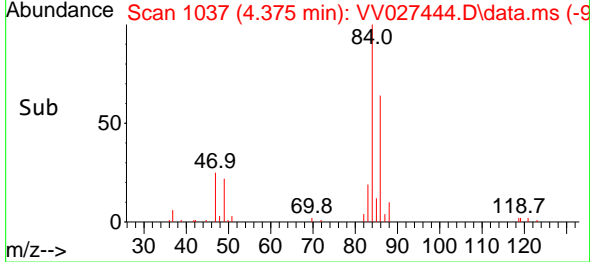
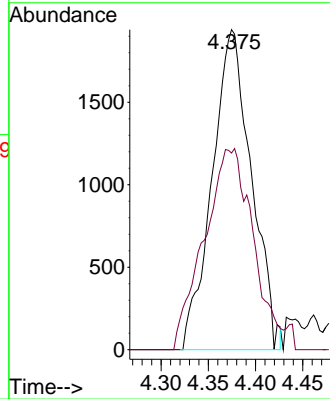
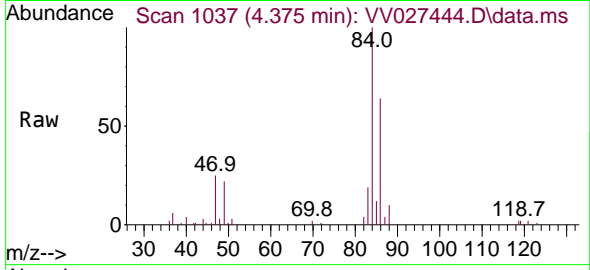




#25
 Chloroform
 Concen: 0.244 ug/L
 RT: 4.375 min Scan# 1037
 Delta R.T. 0.003 min
 Lab File: VV027444.D
 Acq: 19 Aug 2022 16:44

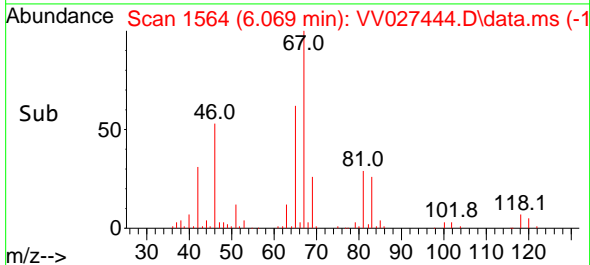
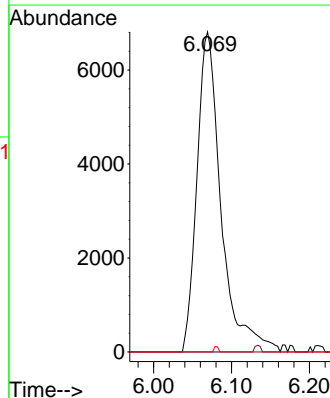
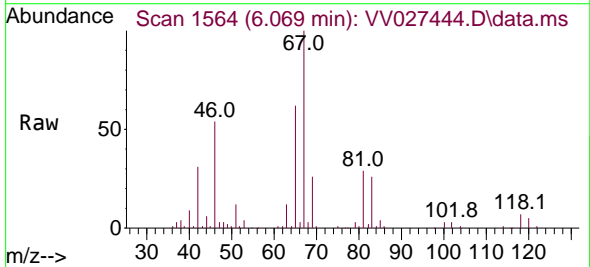
Instrument : MSVOA_V
 ClientSampleId : EX9D8

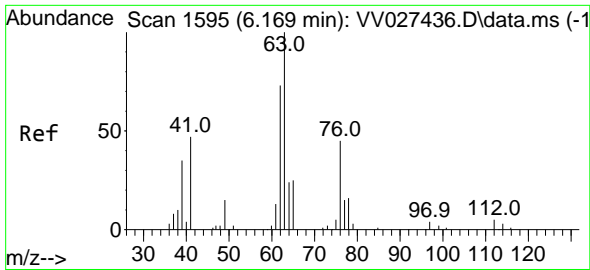
Tgt Ion: 83 Resp: 5604
 Ion Ratio Lower Upper
 83 100
 85 61.4 43.3 80.5



#35
 Methylcyclohexane
 Concen: 0.881 ug/L
 RT: 6.069 min Scan# 1564
 Delta R.T. -0.058 min
 Lab File: VV027444.D
 Acq: 19 Aug 2022 16:44

Tgt Ion: 83 Resp: 14621
 Ion Ratio Lower Upper
 83 100
 55 0.5 68.2 102.4#
 98 0.3 39.0 58.4#

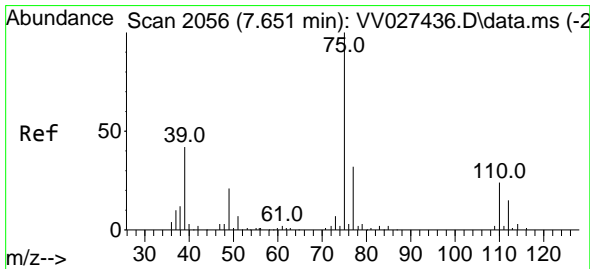
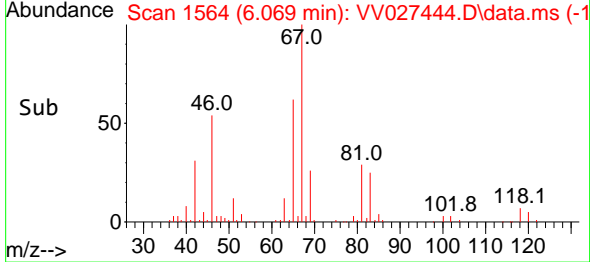
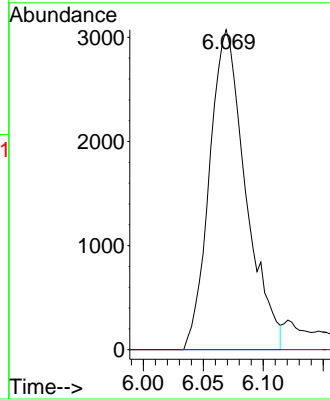
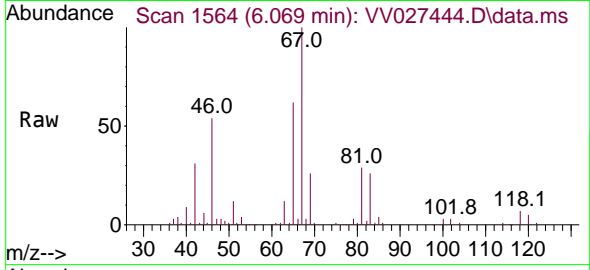




#37
 1,2-Dichloropropane
 Concen: 0.542 ug/L
 RT: 6.069 min Scan# 111
 Delta R.T. -0.100 min
 Lab File: VV027444.D
 Acq: 19 Aug 2022 16:44

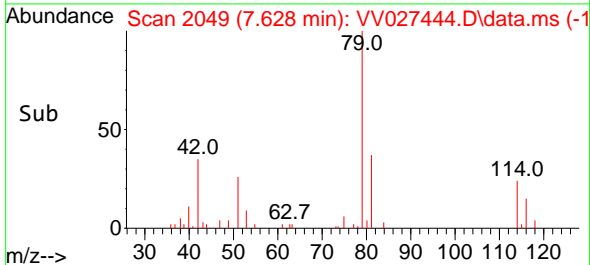
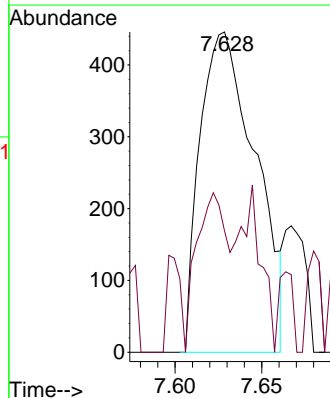
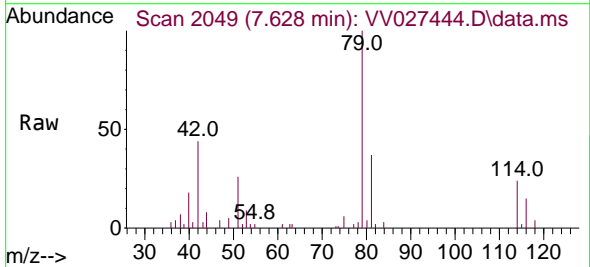
Instrument : MSVOA_V
 ClientSampleId : EX9D8

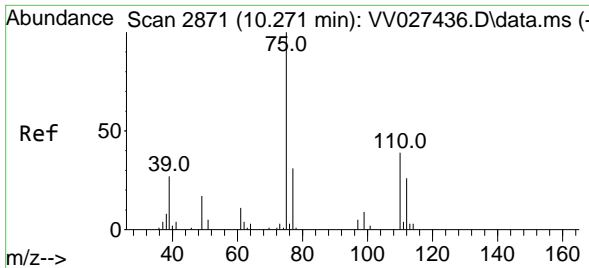
Tgt Ion: 63 Resp: 6473
 Ion Ratio Lower Upper
 63 100
 112 0.0 3.9 5.9#



#44
 trans-1,3-Dichloropropene
 Concen: 0.082 ug/L
 RT: 7.628 min Scan# 2049
 Delta R.T. -0.023 min
 Lab File: VV027444.D
 Acq: 19 Aug 2022 16:44

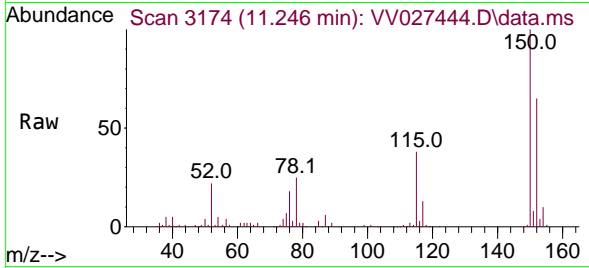
Tgt Ion: 75 Resp: 993
 Ion Ratio Lower Upper
 75 100
 77 37.9 22.3 41.5



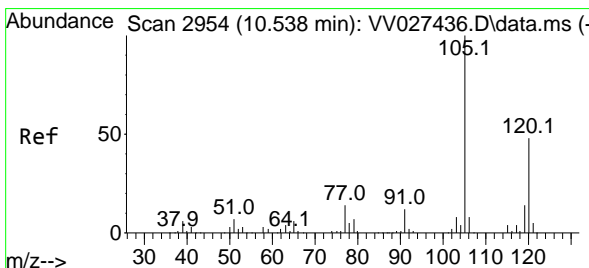
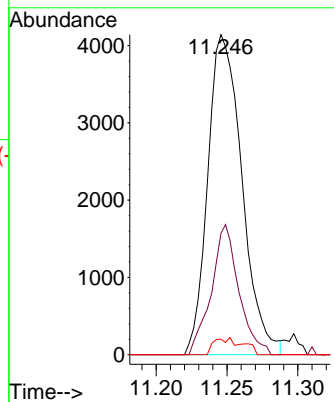
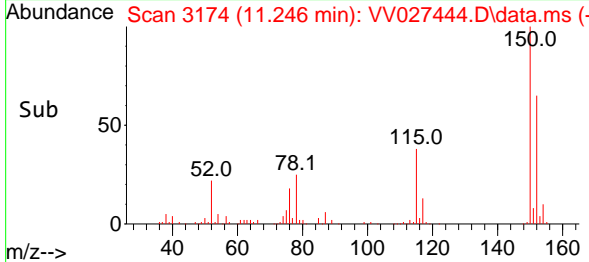


#61
 1,2,3-Trichloropropane
 Concen: 1.357 ug/L
 RT: 11.246 min Scan# 3174
 Delta R.T. 0.974 min
 Lab File: VV027444.D
 Acq: 19 Aug 2022 16:44

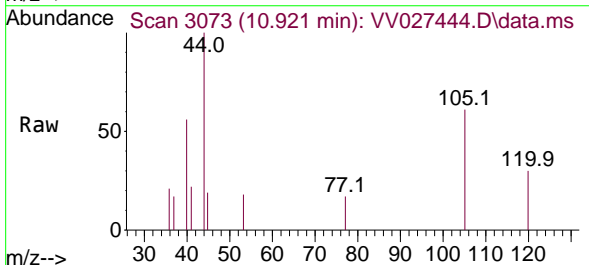
Instrument :
 MSVOA_V
 ClientSampleId :
 EX9D8



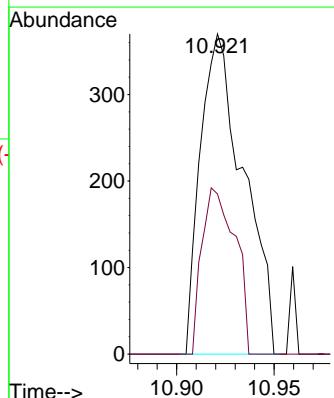
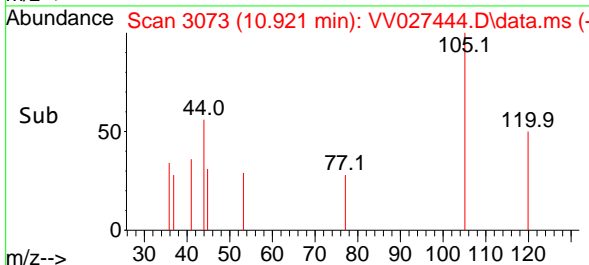
Tgt Ion: 75 Resp: 6954
 Ion Ratio Lower Upper
 75 100
 77 32.7 26.2 39.2
 110 3.3 29.9 44.9#

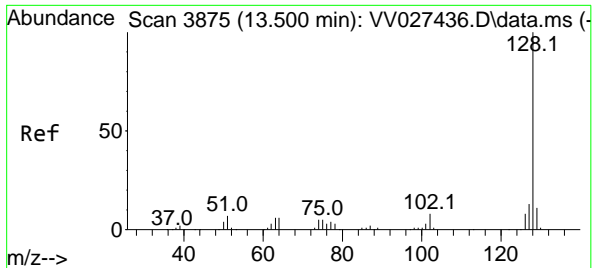


#62
 1,3,5-Trimethylbenzene
 Concen: 0.054 ug/L
 RT: 10.921 min Scan# 3073
 Delta R.T. 0.383 min
 Lab File: VV027444.D
 Acq: 19 Aug 2022 16:44



Tgt Ion: 105 Resp: 571
 Ion Ratio Lower Upper
 105 100
 120 39.9 38.7 58.1





#71
 Naphthalene
 Concen: 0.059 ug/L
 RT: 13.519 min Scan# 3875
 Delta R.T. 0.019 min
 Lab File: VV027444.D
 Acq: 19 Aug 2022 16:44

Instrument : MSVOA_V
 ClientSampleId : EX9D8

Tgt Ion:128 Resp: 834

Ion	Ratio	Lower	Upper
128	100		
129	0.0	8.7	13.1#
127	4.7	10.4	15.6#

