

Data Path : Z:\VOASRV\HPCHEM1\MSVOA V\DATA\VV082018\  
 Data File : VV007085.D  
 Acq On : 20 Aug 2018 21:20  
 Operator : SY/MD  
 Sample : J4488-19  
 Misc : 25.0 mL/MSVOA V/WATER  
 ALS Vial : 22 Sample Multiplier: 1

Instrument :  
 MSVOA\_V  
 ClientSampleId :  
 C0362

Integration Parameters: rteint.p  
 Integrator: RTE  
 Smoothing : ON Filtering: 5  
 Sampling : 1 Min Area: 3 % of largest Peak  
 Start Thrs: 0.1 Max Peaks: 100  
 Stop Thrs : 0 Peak Location: TOP

If leading or trailing edge < 100 prefer < Baseline drop else tangent >  
 Peak separation: 5

Method : Z:\VOASRV\HPCHEM1\MSVOA\_V\METHOD\SOMVTR080918WMA.M  
 Title : TRACE VOA SOM01.0

Signal : TIC

peak #	R.T. min	first scan	max scan	last scan	PK TY	peak height	corr. area	corr. % max.	% of total
1	1.029	28	43	83	rBV	6076569	7561998	18.68%	10.427%
2	2.144	376	390	429	rBV	12165541	17693140	43.70%	24.396%
3	3.228	713	727	749	rVB	494399	1032729	2.55%	1.424%
4	3.971	941	958	1007	rBV2	117430	437850	1.08%	0.604%
5	4.408	1076	1094	1121	rVB	165326	412372	1.02%	0.569%
6	4.662	1150	1173	1216	rBV	16439720	40486032	100.00%	55.825%
7	5.099	1289	1309	1330	rBV2	395263	919130	2.27%	1.267%
8	5.668	1473	1486	1509	rBV	287724	571184	1.41%	0.788%
9	6.125	1614	1628	1652	rVB	222154	444171	1.10%	0.612%
10	7.366	1997	2014	2029	rBV	334746	599130	1.48%	0.826%
11	8.154	2245	2259	2270	rBV4	277153	653690	1.61%	0.901%
12	8.903	2479	2492	2529	rBV	402034	699611	1.73%	0.965%
13	11.301	3226	3238	3267	rBV	282450	528066	1.30%	0.728%
14	11.681	3343	3356	3379	rBV	267164	484537	1.20%	0.668%

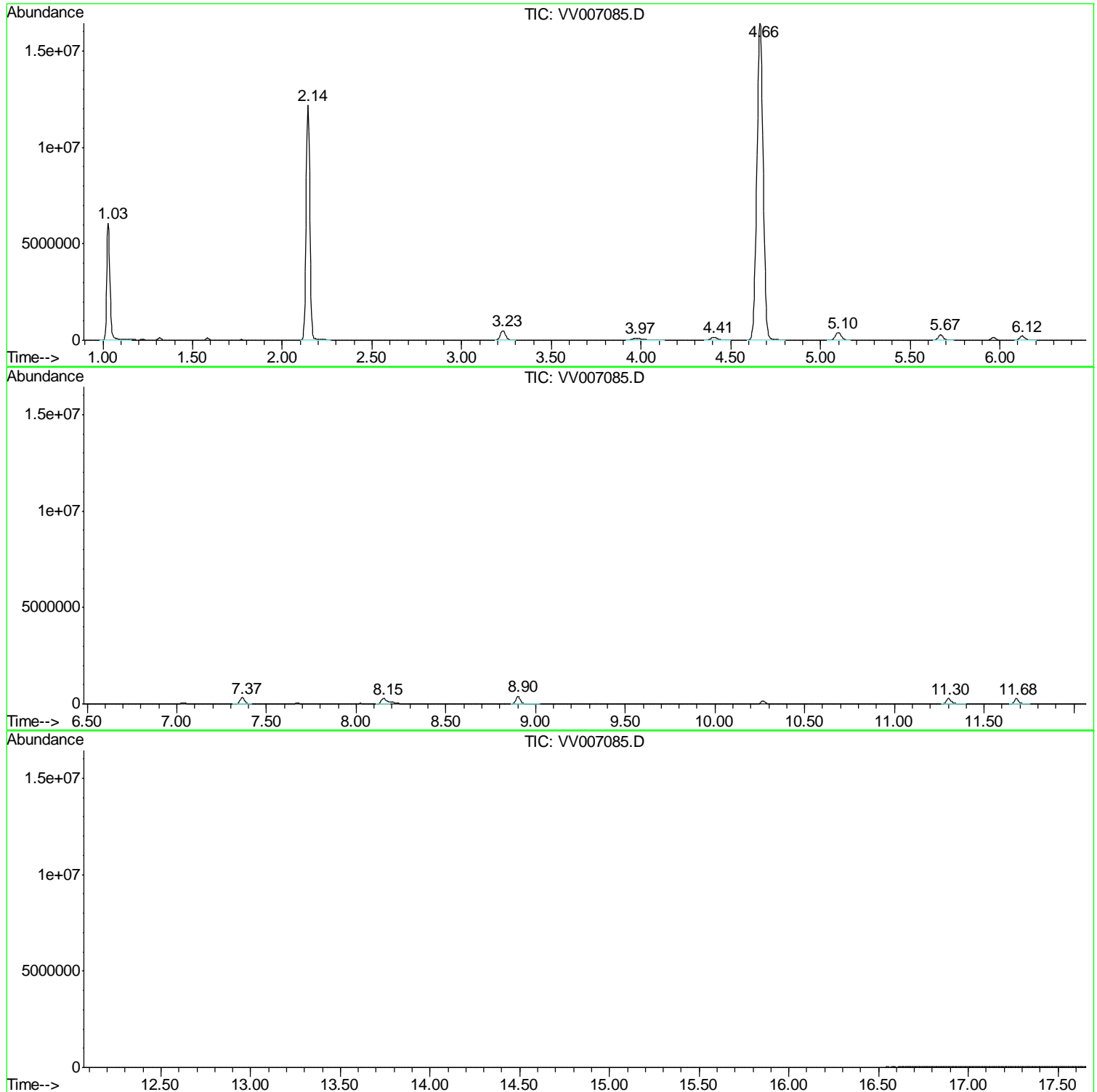
Sum of corrected areas: 72523640

Data Path : Z:\VOASRV\HPCHEM1\MSVOA V\DATA\VV082018\  
Data File : VV007085.D  
Acq On : 20 Aug 2018 21:20  
Operator : SY/MD  
Sample : J4488-19  
Misc : 25.0 mL/MSVOA V/WATER  
ALS Vial : 22 Sample Multiplier: 1

Instrument :  
MSVOA\_V  
ClientSampleId :  
C0362

Quant Method : Z:\VOASRV\HPCHEM1\MSVOA\_V\METHOD\SOMVTR080918WMA.M  
Quant Title : TRACE VOA SOM01.0

TIC Library : C:\DATABASE\NIST11.L  
TIC Integration Parameters: LSCINT.P



Data Path : Z:\VOASRV\HPCHEM1\MSVOA\_V\DATA\VV082018\  
Data File : VV007085.D  
Acq On : 20 Aug 2018 21:20  
Operator : SY/MD  
Sample : J4488-19  
Misc : 25.0 mL/MSVOA\_V/WATER  
ALS Vial : 22 Sample Multiplier: 1

Instrument :  
MSVOA\_V  
ClientSampleId :  
C0362

Quant Method : Z:\VOASRV\HPCHEM1\MSVOA\_V\METHOD\SOMVTR080918WMA.M  
Quant Title : TRACE VOA SOM01.0

TIC Library : C:\DATABASE\NIST11.L  
TIC Integration Parameters: LSCINT.P

No Library Search Compounds Detected

\*\*\*\*\*

Data Path : Z:\VOASRV\HPCHEM1\MSVOA\_V\DATA\VV082018\  
Data File : VV007085.D  
Acq On : 20 Aug 2018 21:20  
Operator : SY/MD  
Sample : J4488-19  
Misc : 25.0 mL/MSVOA\_V/WATER  
ALS Vial : 22 Sample Multiplier: 1

Instrument :  
MSVOA\_V  
ClientSampleId :  
C0362

Quant Method : Z:\VOASRV\HPCHEM1\MSVOA\_V\METHOD\SOMVTR080918WMA.M  
Quant Title : TRACE VOA SOM01.0

TIC Library : C:\DATABASE\NIST11.L  
TIC Integration Parameters: LSCINT.P

TIC Top Hit name	RT	EstConc	Units	Response	--Internal Standard--			
					#	RT	Resp	Conc

---