

Data Path : Z:\voasrv\HPCHEM1\MSVOA\_V\Data\VV082021\  
 Data File : VV021919.D  
 Acq On : 20 Aug 2021 17:24  
 Operator : SY/MD  
 Sample : M3458-16ME  
 Misc : 6.47g/5.0mL/100uL/5.0mL/MSVOA\_V/MEOH  
 ALS Vial : 19 Sample Multiplier: 1

Instrument :  
 MSVOA\_V  
 ClientSampleId :  
 C0AS2ME

Integration Parameters: LSCINT.P

Integrator: RTE  
 Smoothing : OFF Filtering: 5  
 Sampling : 1 Min Area: 0 % of largest Peak  
 Start Thrs: 0.2 Max Peaks: 100  
 Stop Thrs : 0 Peak Location: TOP

If leading or trailing edge < 100 prefer < Baseline drop else tangent >  
 Peak separation: 5

Method : Z:\voasrv\HPCHEM1\MSVOA\_V\Method\SFAMVLM081621WMA.M  
 Title : VOC Analysis

Signal : TIC: VV021919.D\data.ms

peak #	R.T. min	first scan	max scan	last scan	PK TY	peak height	corr. area	corr. % max.	% of total
1	1.301	75	81	107	rBV	123006	178404	14.31%	1.759%
2	2.069	311	320	334	rBV	268699	384748	30.86%	3.793%
3	2.574	475	477	482	rVB3	754	466	0.04%	0.005%
4	2.738	525	528	529	rBV	578	280	0.02%	0.003%
5	2.835	555	558	561	rBV2	331	232	0.02%	0.002%
6	2.857	561	565	567	rBV	518	299	0.02%	0.003%
7	2.937	587	590	591	rBV	457	213	0.02%	0.002%
8	3.163	658	660	664	rVB	429	226	0.02%	0.002%
9	3.629	802	805	807	rBV2	314	198	0.02%	0.002%
10	3.735	834	838	840	rBV3	533	458	0.04%	0.005%
11	3.796	855	857	860	rVB	374	178	0.01%	0.002%
12	3.892	878	887	923	rBV2	62239	240480	19.29%	2.370%
13	4.346	1012	1028	1057	rBV	177214	475695	38.15%	4.689%
14	4.635	1114	1118	1119	rBV	540	363	0.03%	0.004%
15	4.651	1119	1123	1125	rBV3	1142	875	0.07%	0.009%
16	4.899	1197	1200	1203	rBV2	472	292	0.02%	0.003%
17	4.979	1221	1225	1227	rBV2	425	321	0.03%	0.003%
18	5.040	1227	1244	1280	rBV2	502387	1246874	100.00%	12.291%
19	5.333	1328	1335	1337	rBV4	4646	5875	0.47%	0.058%
20	5.526	1392	1395	1398	rBV2	364	275	0.02%	0.003%
21	5.613	1409	1422	1454	rBV	453400	946881	75.94%	9.334%
22	5.905	1502	1513	1529	rBV3	21522	47603	3.82%	0.469%
23	6.069	1550	1564	1600	rBV	255102	555621	44.56%	5.477%
24	6.288	1629	1632	1635	rVB3	711	431	0.03%	0.004%
25	6.317	1639	1641	1644	rBV2	397	240	0.02%	0.002%
26	6.359	1651	1654	1657	rVB3	358	218	0.02%	0.002%
27	6.375	1657	1659	1663	rVB2	322	181	0.01%	0.002%
28	6.461	1682	1686	1688	rBV2	220	181	0.01%	0.002%
29	6.571	1716	1720	1722	rBV2	233	212	0.02%	0.002%
30	6.876	1810	1815	1818	rBV2	365	305	0.02%	0.003%
31	6.989	1838	1850	1875	rBV	137237	271775	21.80%	2.679%
32	7.220	1914	1922	1924	rBV4	769	917	0.07%	0.009%
33	7.317	1940	1952	1970	rBV	580749	1033477	82.89%	10.187%
34	7.555	2024	2026	2030	rVB4	520	362	0.03%	0.004%
35	7.574	2030	2032	2036	rBV3	572	359	0.03%	0.004%
36	7.625	2036	2048	2073	rBV	89507	179465	14.39%	1.769%

Data Path : Z:\voasrv\HPCHEM1\MSVOA\_V\Data\VV082021\  
 Data File : VV021919.D  
 Acq On : 20 Aug 2021 17:24  
 Operator : SY/MD  
 Sample : M3458-16ME  
 Misc : 6.47g/5.0mL/100uL/5.0mL/MSVOA\_V/MEOH  
 ALS Vial : 19 Sample Multiplier: 1

Instrument :  
 MSVOA\_V  
 ClientSampleId :  
 COAS2ME

Integration Parameters: LSCINT.P

Integrator: RTE  
 Smoothing : OFF Filtering: 5  
 Sampling : 1 Min Area: 0 % of largest Peak  
 Start Thrs: 0.2 Max Peaks: 100  
 Stop Thrs : 0 Peak Location: TOP

If leading or trailing edge < 100 prefer < Baseline drop else tangent >  
 Peak separation: 5

Method : Z:\voasrv\HPCHEM1\MSVOA\_V\Method\SFAMVLM081621WMA.M  
 Title : VOC Analysis

37	7.799	2100	2102	2109	rVB4	850	686	0.06%	0.007%
38	7.838	2109	2114	2115	rBV	586	367	0.03%	0.004%
39	7.944	2143	2147	2149	rBV2	388	267	0.02%	0.003%
40	7.982	2154	2159	2162	rVB2	383	217	0.02%	0.002%
41	8.104	2185	2197	2226	rBV2	232448	532111	42.68%	5.245%
42	8.416	2290	2294	2298	rBV6	652	725	0.06%	0.007%
43	8.548	2329	2335	2338	rBV2	700	613	0.05%	0.006%
44	8.603	2349	2352	2354	rVB2	507	321	0.03%	0.003%
45	8.632	2358	2361	2365	rVV2	367	336	0.03%	0.003%
46	8.854	2418	2430	2455	rBV	671898	1163642	93.32%	11.470%
47	9.108	2504	2509	2512	rBV4	526	551	0.04%	0.005%
48	9.149	2514	2522	2527	rBV6	2840	3926	0.31%	0.039%
49	9.198	2535	2537	2540	rVB3	479	252	0.02%	0.002%
50	9.233	2545	2548	2553	rVB3	501	409	0.03%	0.004%
51	9.555	2638	2648	2652	rBV3	1736	2517	0.20%	0.025%
52	9.670	2681	2684	2686	rVV	596	268	0.02%	0.003%
53	9.683	2686	2688	2689	rVV	475	256	0.02%	0.003%
54	9.764	2709	2713	2716	rBV	220	203	0.02%	0.002%
55	9.841	2735	2737	2739	rBV2	328	183	0.01%	0.002%
56	9.902	2752	2756	2759	rBV3	754	643	0.05%	0.006%
57	9.985	2778	2782	2785	rBV	341	273	0.02%	0.003%
58	10.053	2799	2803	2804	rBV	264	190	0.02%	0.002%
59	10.075	2808	2810	2813	rVB2	384	180	0.01%	0.002%
60	10.133	2817	2828	2841	rBV4	5100	8757	0.70%	0.086%
61	10.223	2843	2856	2876	rBV	372400	603220	48.38%	5.946%
62	10.423	2916	2918	2921	rBV2	600	390	0.03%	0.004%
63	10.538	2950	2954	2955	rBV2	714	509	0.04%	0.005%
64	10.661	2988	2992	2998	rVB4	824	924	0.07%	0.009%
65	10.828	3040	3044	3045	rBV	540	336	0.03%	0.003%
66	10.921	3066	3073	3085	rVB4	6528	10733	0.86%	0.106%
67	11.040	3103	3110	3115	rVV4	1234	1566	0.13%	0.015%
68	11.072	3117	3120	3124	rBV2	497	385	0.03%	0.004%
69	11.149	3135	3144	3153	rBV6	2873	5076	0.41%	0.050%
70	11.188	3153	3156	3159	rBV4	741	581	0.05%	0.006%
71	11.252	3165	3176	3195	rBV	788197	1212580	97.25%	11.953%
72	11.513	3253	3257	3260	rBV3	367	359	0.03%	0.004%
73	11.535	3262	3264	3266	rBV	437	223	0.02%	0.002%
74	11.564	3272	3273	3276	rBV2	496	340	0.03%	0.003%
75	11.628	3281	3293	3315	rVV	643358	995522	79.84%	9.813%
76	11.908	3377	3380	3383	rBV2	621	434	0.03%	0.004%

Data Path : Z:\voasrv\HPCHEM1\MSVOA\_V\Data\VV082021\  
 Data File : VV021919.D  
 Acq On : 20 Aug 2021 17:24  
 Operator : SY/MD  
 Sample : M3458-16ME  
 Misc : 6.47g/5.0mL/100uL/5.0mL/MSVOA\_V/MEOH  
 ALS Vial : 19 Sample Multiplier: 1

Instrument :  
 MSVOA\_V  
 ClientSampleId :  
 C0AS2ME

Integration Parameters: LSCINT.P

Integrator: RTE  
 Smoothing : OFF Filtering: 5  
 Sampling : 1 Min Area: 0 % of largest Peak  
 Start Thrs: 0.2 Max Peaks: 100  
 Stop Thrs : 0 Peak Location: TOP

If leading or trailing edge < 100 prefer < Baseline drop else tangent >  
 Peak separation: 5

Method : Z:\voasrv\HPCHEM1\MSVOA\_V\Method\SFAMVLM081621WMA.M  
 Title : VOC Analysis

77	11.966	3395	3398	3400	rBV2	392	197	0.02%	0.002%
78	11.989	3401	3405	3408	rVB3	414	309	0.02%	0.003%
79	12.008	3408	3411	3413	rBV	473	263	0.02%	0.003%
80	12.030	3416	3418	3421	rVB3	389	191	0.02%	0.002%
81	12.053	3421	3425	3427	rBV	665	513	0.04%	0.005%
82	12.127	3445	3448	3450	rBV2	514	360	0.03%	0.004%
83	12.165	3456	3460	3462	rBV	326	190	0.02%	0.002%
84	12.249	3480	3486	3488	rBV3	601	574	0.05%	0.006%
85	12.419	3537	3539	3542	rBV2	371	233	0.02%	0.002%
86	12.471	3553	3555	3557	rBV	332	189	0.02%	0.002%
87	12.497	3561	3563	3566	rBV2	346	229	0.02%	0.002%
88	12.535	3571	3575	3577	rBV	475	301	0.02%	0.003%
89	12.554	3579	3581	3588	rVB3	714	481	0.04%	0.005%
90	12.603	3588	3596	3604	rVB5	1318	2182	0.17%	0.022%
91	12.641	3604	3608	3609	rBV2	401	251	0.02%	0.002%
92	12.754	3641	3643	3647	rVB	390	199	0.02%	0.002%
93	12.892	3680	3686	3692	rVB7	1691	2438	0.20%	0.024%
94	13.413	3846	3848	3852	rBV2	246	220	0.02%	0.002%
95	13.516	3873	3880	3888	rVV2	3713	5950	0.48%	0.059%
96	13.902	3994	4000	4006	rBV3	1551	1794	0.14%	0.018%
97	14.506	4185	4188	4195	rBV3	676	614	0.05%	0.006%
98	14.812	4282	4283	4284	rBV3	642	247	0.02%	0.002%
99	14.934	4319	4321	4324	rVB2	741	306	0.02%	0.003%
100	15.021	4346	4348	4351	rBV2	748	438	0.04%	0.004%

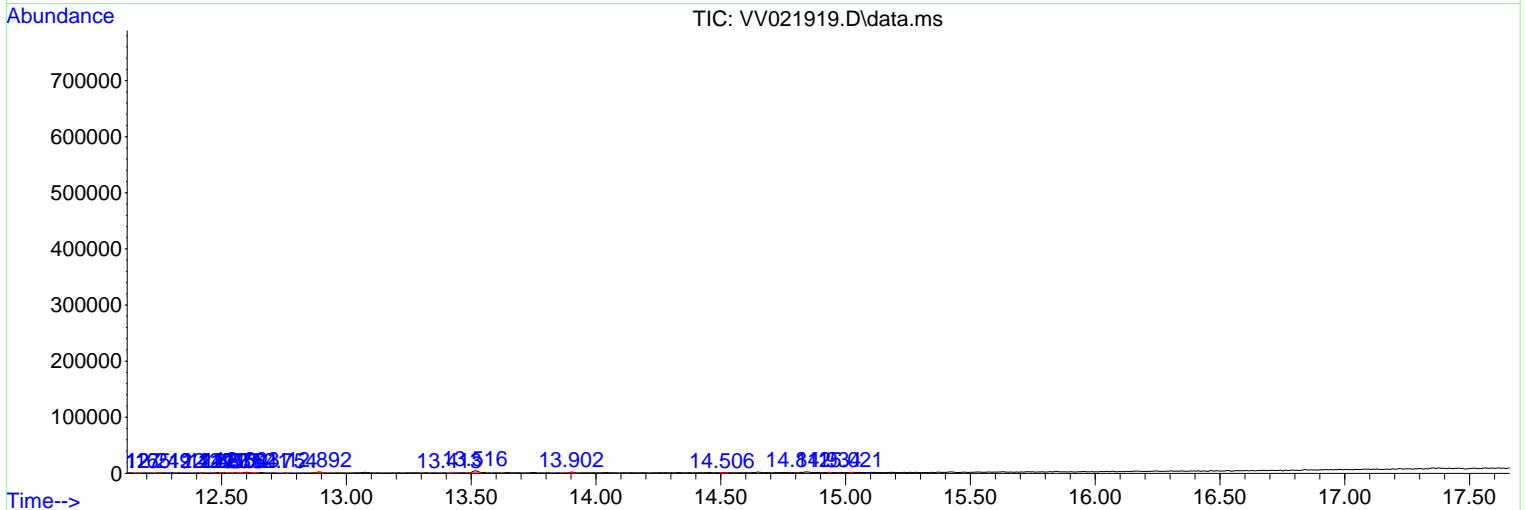
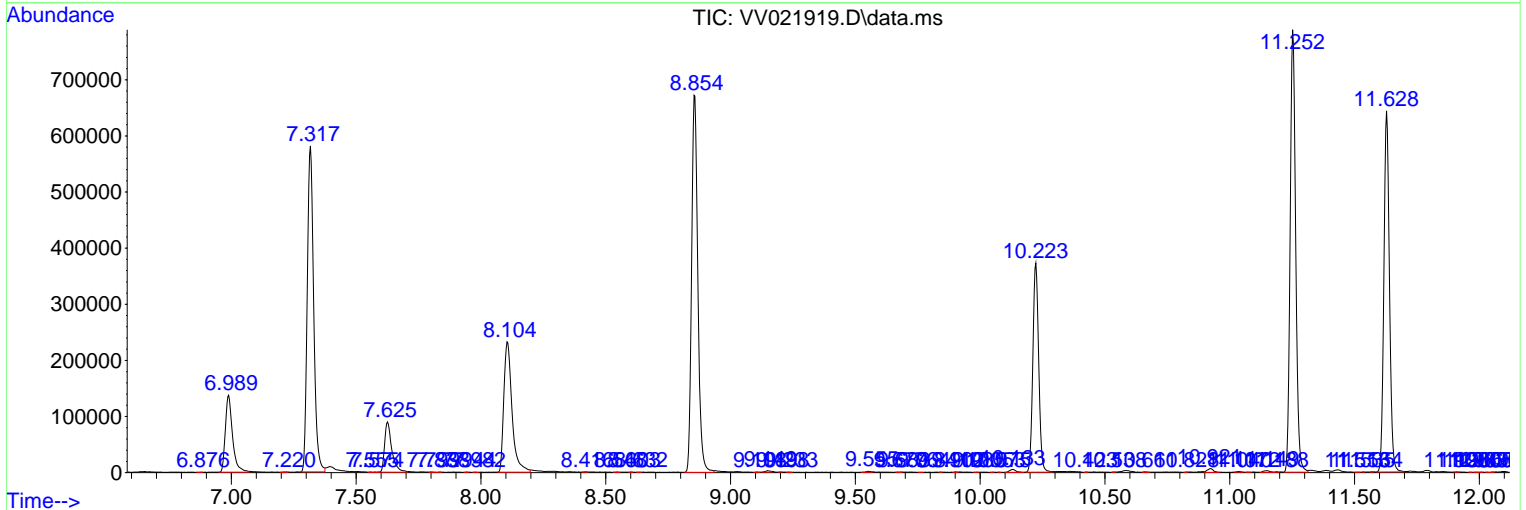
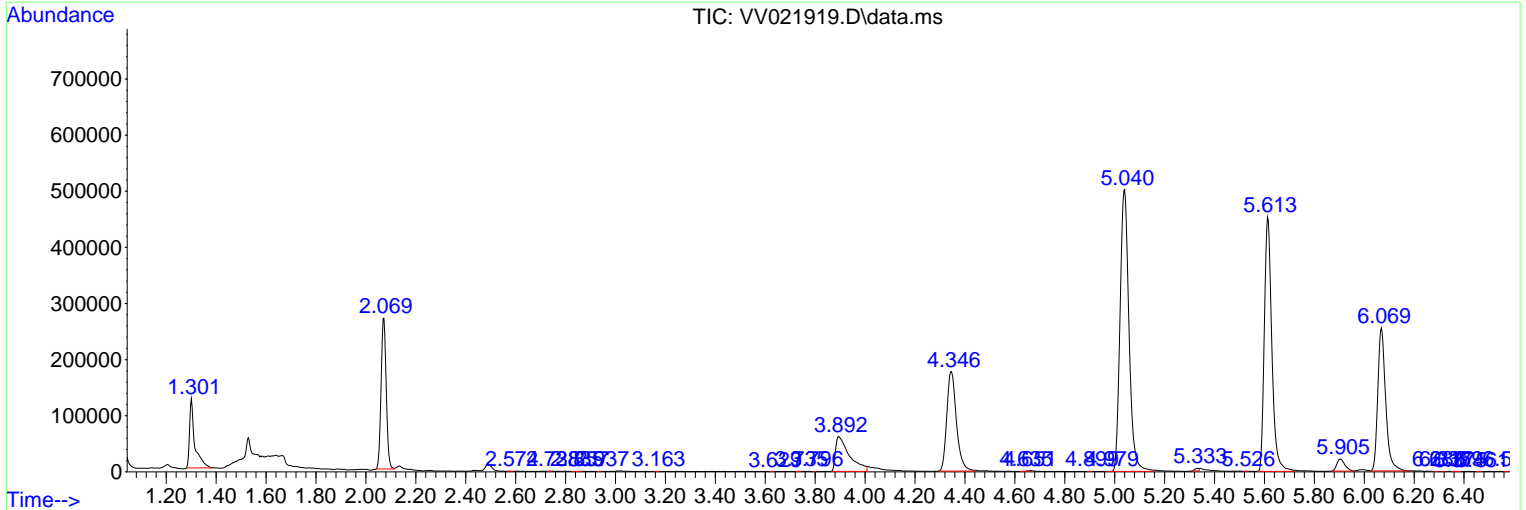
Sum of corrected areas: 10144720

Data Path : Z:\voasrv\HPCHEM1\MSVOA\_V\Data\VV082021\  
 Data File : VV021919.D  
 Acq On : 20 Aug 2021 17:24  
 Operator : SY/MD  
 Sample : M3458-16ME  
 Misc : 6.47g/5.0mL/100uL/5.0mL/MSVOA\_V/MEOH  
 ALS Vial : 19 Sample Multiplier: 1

**Instrument :**  
 MSVOA\_V  
**Client Sampled :**  
 COAS2ME

Quant Method : Z:\voasrv\HPCHEM1\MSVOA\_V\Method\SFAMVLM081621WMA.M  
 Quant Title : VOC Analysis

TIC Library : C:\Database\NIST20.L  
 TIC Integration Parameters: LSCINT.P



Data Path : Z:\voasrv\HPCHEM1\MSVOA\_V\Data\VV082021\  
 Data File : VV021919.D  
 Acq On : 20 Aug 2021 17:24  
 Operator : SY/MD  
 Sample : M3458-16ME  
 Misc : 6.47g/5.0mL/100uL/5.0mL/MSVOA\_V/MEOH  
 ALS Vial : 19 Sample Multiplier: 1

Instrument :  
 MSVOA\_V  
 ClientSampleId :  
 C0AS2ME

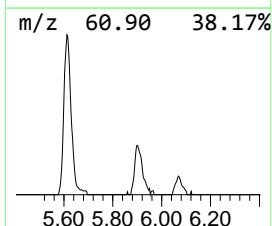
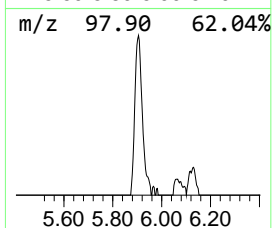
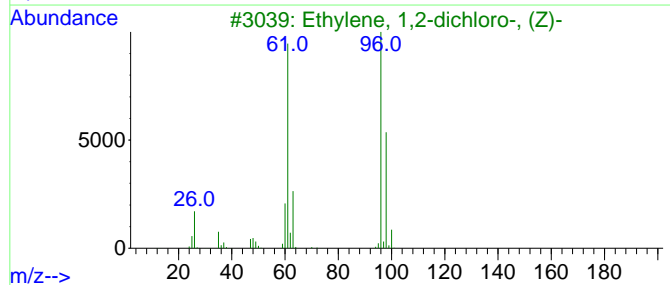
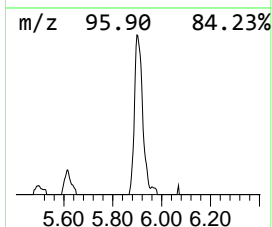
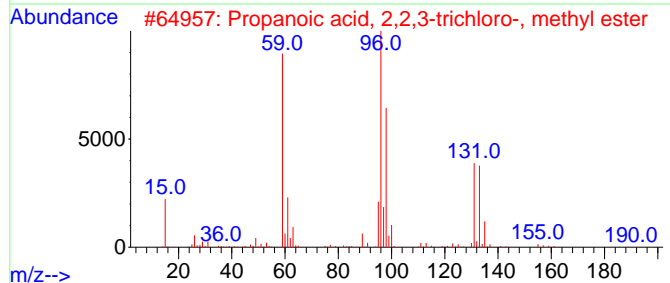
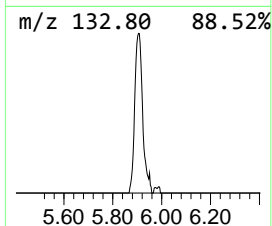
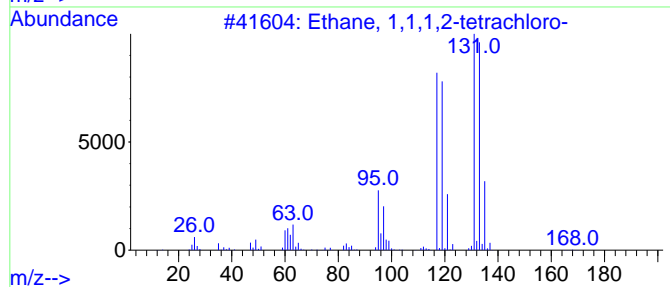
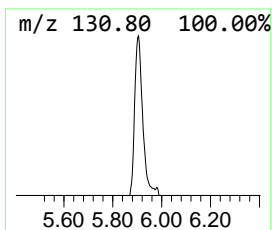
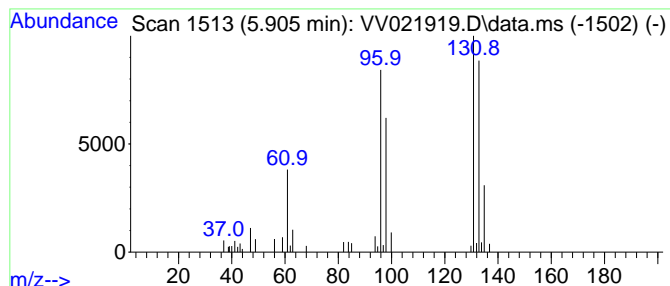
Quant Method : Z:\voasrv\HPCHEM1\MSVOA\_V\Method\SFAMVLM081621WMA.M  
 Quant Title : VOC Analysis

TIC Library : C:\Database\NIST20.L  
 TIC Integration Parameters: LSCINT.P

\*\*\*\*\*  
 Peak Number 1 unknown-01 Concentration Rank 2

R.T.	EstConc	Area	Relative to ISTD	R.T.
5.905	2.51 ug/L	47603	1,4-Difluorobenzene	5.613

Hit#	of 5	Tentative ID	MW	MolForm	CAS#	Qual
1		Ethane, 1,1,1,2-tetrachloro-	166	C2H2Cl4	000630-20-6	43
2		Propanoic acid, 2,2,3-trichloro-...	190	C4H5Cl3O2	004749-35-3	42
3		Ethylene, 1,2-dichloro-, (Z)-	96	C2H2Cl2	000156-59-2	38
4		Dihydro-4,5-dichloro-2(3H)furanone	154	C4H4Cl2O2	114434-99-0	35
5		4-Chloro-3-fluoropyridine	131	C5H3ClFN	002546-56-7	32



Data Path : Z:\voasrv\HPCHEM1\MSVOA\_V\Data\VV082021\  
Data File : VV021919.D  
Acq On : 20 Aug 2021 17:24  
Operator : SY/MD  
Sample : M3458-16ME  
Misc : 6.47g/5.0mL/100uL/5.0mL/MSVOA\_V/MEOH  
ALS Vial : 19 Sample Multiplier: 1

Instrument :  
MSVOA\_V  
ClientSampleId :  
COAS2ME

Quant Method : Z:\voasrv\HPCHEM1\MSVOA\_V\Method\SFAMVLM081621WMA.M  
Quant Title : VOC Analysis

TIC Library : C:\Database\NIST0.L  
TIC Integration Parameters: LSCINT.P

TIC Top Hit name	RT	EstConc	Units	Response	--Internal Standard--			
					#	RT	Resp	Conc
unknown-01	5.905	2.5	ug/L	47603	1	5.613	946881	50.0