

Data Path : Z:\voasrv\HPCHEM1\MSVOA_V\Data\VV082222\
 Data File : VV027459.D
 Acq On : 22 Aug 2022 11:40
 Operator : SY/MD
 Sample : N4268-02
 Misc : 25.0mL/MSVOA_V/WATER
 ALS Vial : 6 Sample Multiplier: 1

Instrument :
 MSVOA_V
 ClientSampleId :
 C0AB8

Integration Parameters: rteint.p

Integrator: RTE
 Smoothing : ON
 Sampling : 1
 Start Thrs : 0.1
 Stop Thrs : 0

Filtering: 5
 Min Area: 3 % of largest Peak
 Max Peaks: 100
 Peak Location: TOP

If leading or trailing edge < 100 prefer < Baseline drop else tangent >
 Peak separation: 5

Method : Z:\voasrv\HPCHEM1\MSVOA_V\Method\SFAMVTR081922WMA.M
 Title : TRACE VOA SFAM1.0

Signal : TIC: VV027459.D\data.ms

peak #	R.T. min	first scan	max scan	last scan	PK TY	peak height	corr. area	corr. % max.	% of total
1	1.307	73	83	96	rBV	58386	65879	15.70%	1.916%
2	1.381	101	106	110	rBV4	5060	6623	1.58%	0.193%
3	1.568	156	164	174	rBV	60479	72577	17.30%	2.110%
4	2.105	322	331	344	rBV	133226	190192	45.33%	5.530%
5	2.507	445	456	467	rBV	13046	21372	5.09%	0.621%
6	2.574	468	477	487	rVB6	5298	9005	2.15%	0.262%
7	3.899	877	889	909	rBV	21199	71298	16.99%	2.073%
8	4.346	1011	1028	1059	rBV2	75331	204633	48.77%	5.950%
9	5.043	1230	1245	1278	rBV2	156819	419561	100.00%	12.200%
10	5.616	1412	1423	1455	rBV	135052	292191	69.64%	8.496%
11	5.908	1507	1514	1521	rBV10	2598	4524	1.08%	0.132%
12	6.069	1549	1564	1591	rBV	92298	206724	49.27%	6.011%
13	6.989	1840	1850	1874	rBV	39336	82592	19.69%	2.402%
14	7.313	1940	1951	1976	rBV	173937	326361	77.79%	9.490%
15	7.625	2038	2048	2067	rBV3	22289	44931	10.71%	1.306%
16	7.940	2134	2146	2156	rVB9	2286	4457	1.06%	0.130%
17	8.091	2182	2193	2224	rBV	102944	263612	62.83%	7.665%
18	8.850	2419	2429	2454	rBV	209514	356063	84.87%	10.353%
19	10.214	2843	2853	2867	rBV	61615	101272	24.14%	2.945%
20	10.378	2896	2904	2911	rBV4	3186	5075	1.21%	0.148%
21	11.249	3164	3175	3191	rBV	193226	314142	74.87%	9.134%
22	11.622	3281	3291	3310	rBV	149967	246448	58.74%	7.166%
23	15.168	4391	4394	4399	rBV	9420	5617	1.34%	0.163%
24	15.590	4518	4525	4533	rVB9	2830	4287	1.02%	0.125%
25	16.271	4731	4737	4749	rVB3	4914	7894	1.88%	0.230%
26	16.480	4792	4802	4815	rBV2	63522	106692	25.43%	3.102%
27	17.384	5076	5083	5085	rBV7	4407	5063	1.21%	0.147%

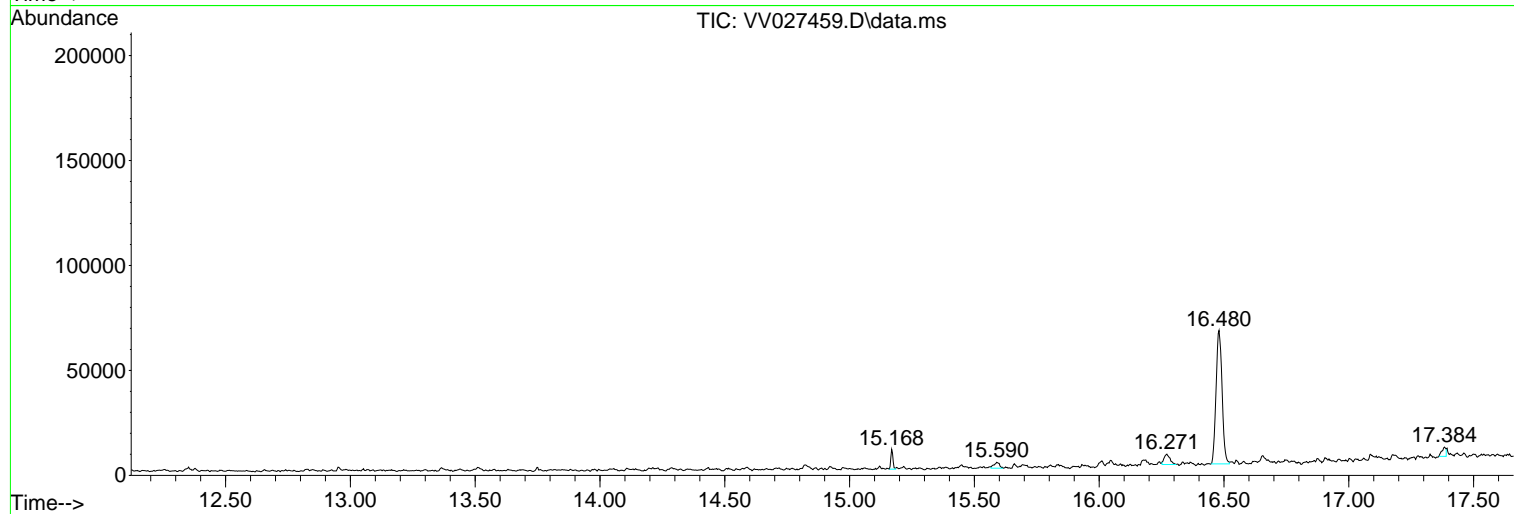
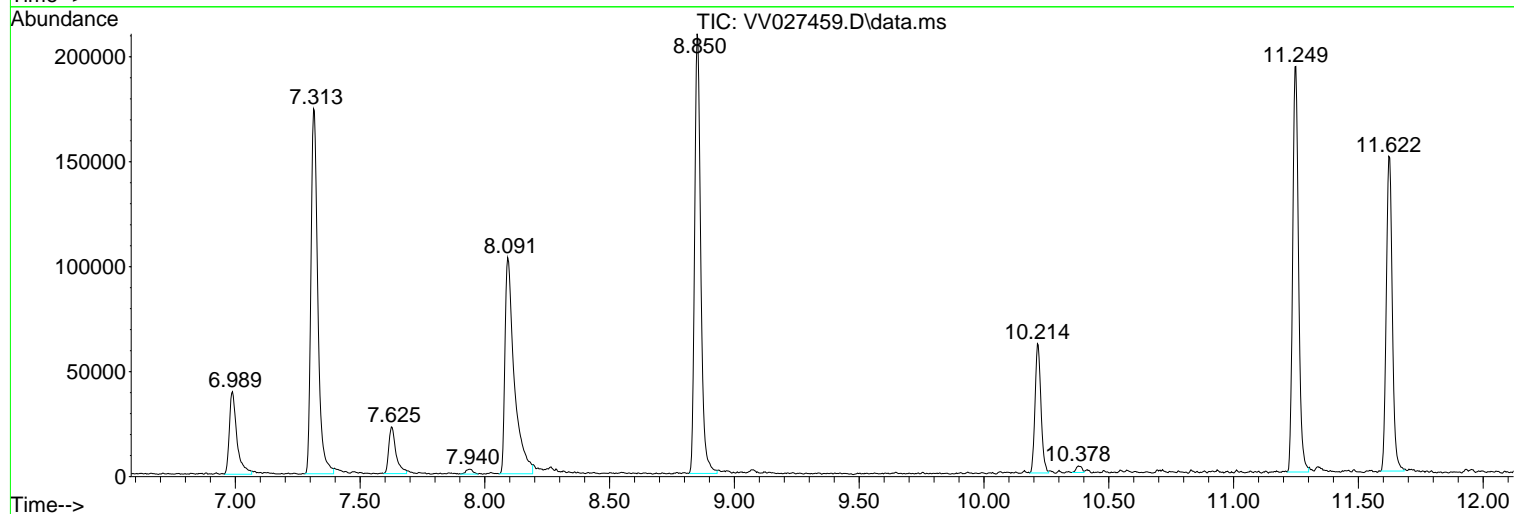
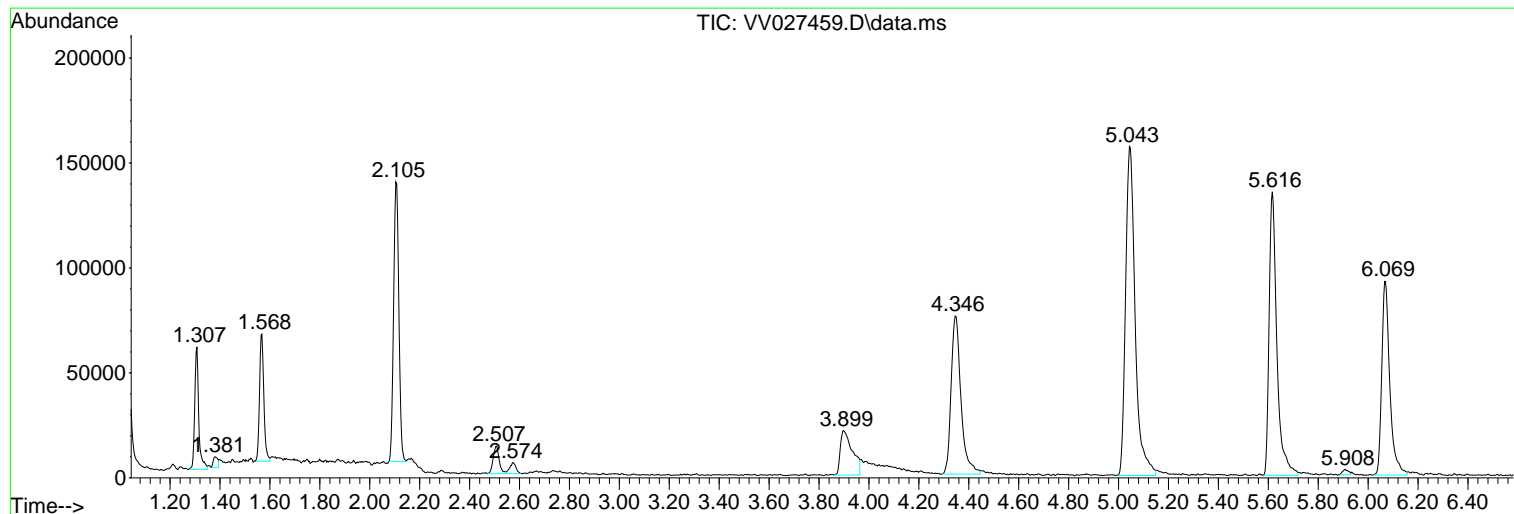
Sum of corrected areas: 3439085

Data Path : Z:\voasrv\HPCHEM1\MSVOA_V\Data\VV082222\
Data File : VV027459.D
Acq On : 22 Aug 2022 11:40
Operator : SY/MD
Sample : N4268-02
Misc : 25.0mL/MSVOA_V/WATER
ALS Vial : 6 Sample Multiplier: 1

Instrument :
MSVOA_V
ClientSampleId :
C0AB8

Quant Method : Z:\voasrv\HPCHEM1\MSVOA_V\Method\SFAMVTR081922WMA.M
Quant Title : TRACE VOA SFAM1.0

TIC Library : C:\Database\NIST20.L
TIC Integration Parameters: LSCINT.P



Data Path : Z:\voasrv\HPCHEM1\MSVOA_V\Data\VW082222\
Data File : VW027459.D
Acq On : 22 Aug 2022 11:40
Operator : SY/MD
Sample : N4268-02
Misc : 25.0mL/MSVOA_V/WATER
ALS Vial : 6 Sample Multiplier: 1

Instrument :
MSVOA_V
ClientSampleId :
C0AB8

Quant Method : Z:\voasrv\HPCHEM1\MSVOA_V\Method\SFAMVTR081922WMA.M
Quant Title : TRACE VOA SFAM1.0

TIC Library : C:\Database\NIST20.L
TIC Integration Parameters: LSCINT.P

No Library Search Compounds Detected

Data Path : Z:\voasrv\HPCHEM1\MSVOA_V\Data\VV082222\
Data File : VV027459.D
Acq On : 22 Aug 2022 11:40
Operator : SY/MD
Sample : N4268-02
Misc : 25.0mL/MSVOA_V/WATER
ALS Vial : 6 Sample Multiplier: 1

Instrument :
MSVOA_V
ClientSampleId :
C0AB8

Quant Method : Z:\voasrv\HPCHEM1\MSVOA_V\Method\SFAMVTR081922WMA.M
Quant Title : TRACE VOA SFAM1.0

TIC Library : C:\Database\NIST0.L
TIC Integration Parameters: LSCINT.P

TIC Top Hit name	RT	EstConc	Units	Response	#	RT	Resp	Conc
------------------	----	---------	-------	----------	---	----	------	------

|--Internal Standard--|