

Data Path : Z:\voasrv\HPCHEM1\MSVOA\_V\Data\VV082523\  
 Data File : VV031924.D  
 Acq On : 25 Aug 2023 10:14  
 Operator : SY/MD  
 Sample : VV0825MBL01  
 Misc : 5.00g/5.0mL/100uL/5.0mL/MSVOA\_V/MEOH  
 ALS Vial : 3 Sample Multiplier: 1

Instrument :  
 MSVOA\_V  
 ClientSampleId :  
 VBLK381

Integration Parameters: LSCINT.P

Integrator: RTE  
 Smoothing : OFF Filtering: 5  
 Sampling : 1 Min Area: 0 % of largest Peak  
 Start Thrs: 0.2 Max Peaks: 100  
 Stop Thrs : 0 Peak Location: TOP

If leading or trailing edge < 100 prefer < Baseline drop else tangent >  
 Peak separation: 5

Method : Z:\voasrv\HPCHEM1\MSVOA\_V\Method\SFAMVLM082323WMA.M  
 Title : VOC Analysis

Signal : TIC: VV031924.D\data.ms

peak #	R.T. min	first scan	max scan	last scan	PK TY	peak height	corr. area	corr. % max.	% of total
1	1.282	69	75	88	rVB	98793	104122	11.07%	1.404%
2	1.532	147	153	167	rVB	96332	111741	11.88%	1.507%
3	2.060	309	317	339	rVB	178380	259703	27.60%	3.501%
4	2.947	590	593	595	rBV2	677	435	0.05%	0.006%
5	3.073	629	632	635	rBV4	630	358	0.04%	0.005%
6	3.188	666	668	671	rBV2	283	184	0.02%	0.002%
7	3.449	747	749	753	rVB2	423	190	0.02%	0.003%
8	3.600	791	796	797	rBV2	589	479	0.05%	0.006%
9	3.693	822	825	826	rBV2	452	234	0.02%	0.003%
10	3.754	839	844	845	rBV4	415	342	0.04%	0.005%
11	3.796	848	857	894	rBV2	67456	208467	22.16%	2.811%
12	4.249	984	998	1024	rBV	140176	358256	38.08%	4.830%
13	4.635	1115	1118	1120	rBV5	435	271	0.03%	0.004%
14	4.741	1149	1151	1155	rBV4	339	262	0.03%	0.004%
15	4.957	1201	1218	1248	rBV2	353149	940901	100.00%	12.686%
16	5.535	1385	1398	1421	rBV	299921	613218	65.17%	8.268%
17	5.770	1469	1471	1476	rVB3	510	398	0.04%	0.005%
18	5.828	1477	1489	1507	rBV2	18157	41241	4.38%	0.556%
19	5.989	1523	1539	1568	rBV	208876	446782	47.48%	6.024%
20	6.236	1614	1616	1618	rBV	423	195	0.02%	0.003%
21	6.326	1642	1644	1646	rBV4	402	178	0.02%	0.002%
22	6.365	1654	1656	1657	rBV4	380	182	0.02%	0.002%
23	6.404	1664	1668	1671	rBV5	422	312	0.03%	0.004%
24	6.471	1685	1689	1692	rVB3	534	463	0.05%	0.006%
25	6.510	1697	1701	1705	rBV3	220	271	0.03%	0.004%
26	6.561	1711	1717	1718	rBV5	1060	940	0.10%	0.013%
27	6.751	1771	1776	1778	rBV3	663	532	0.06%	0.007%
28	6.783	1784	1786	1793	rVB6	646	677	0.07%	0.009%
29	6.825	1793	1799	1800	rBV3	446	375	0.04%	0.005%
30	6.915	1815	1827	1856	rBV	122619	235242	25.00%	3.172%
31	7.246	1918	1930	1957	rBV	420567	753823	80.12%	10.163%
32	7.516	2011	2014	2015	rBV2	503	242	0.03%	0.003%
33	7.555	2016	2026	2055	rVV	84712	155459	16.52%	2.096%
34	7.818	2102	2108	2109	rBV4	492	374	0.04%	0.005%
35	7.854	2112	2119	2120	rBV4	401	451	0.05%	0.006%
36	7.915	2136	2138	2143	rVB4	720	402	0.04%	0.005%

Data Path : Z:\voasrv\HPCHEM1\MSVOA\_V\Data\VV082523\  
 Data File : VV031924.D  
 Acq On : 25 Aug 2023 10:14  
 Operator : SY/MD  
 Sample : VV0825MBL01  
 Misc : 5.00g/5.0mL/100uL/5.0mL/MSVOA\_V/MEOH  
 ALS Vial : 3 Sample Multiplier: 1

Instrument :  
 MSVOA\_V  
 ClientSampleId :  
 VBLK381

Integration Parameters: LSCINT.P

Integrator: RTE  
 Smoothing : OFF  
 Sampling : 1  
 Start Thrs: 0.2  
 Stop Thrs : 0

Filtering: 5  
 Min Area: 0 % of largest Peak  
 Max Peaks: 100  
 Peak Location: TOP

If leading or trailing edge < 100 prefer < Baseline drop else tangent >  
 Peak separation: 5

Method : Z:\voasrv\HPCHEM1\MSVOA\_V\Method\SFAMVLM082323WMA.M  
 Title : VOC Analysis

37	8.031	2163	2174	2211	rBV	162111	331350	35.22%	4.467%
38	8.606	2350	2353	2354	rBV2	403	227	0.02%	0.003%
39	8.638	2359	2363	2368	rBV4	438	462	0.05%	0.006%
40	8.786	2394	2409	2435	rBV	461101	764537	81.26%	10.308%
41	9.059	2491	2494	2495	rBV3	561	360	0.04%	0.005%
42	9.159	2521	2525	2527	rVB3	720	479	0.05%	0.006%
43	9.220	2541	2544	2546	rBV4	243	178	0.02%	0.002%
44	9.259	2553	2556	2560	rBV2	610	399	0.04%	0.005%
45	9.313	2571	2573	2577	rBV2	633	346	0.04%	0.005%
46	9.362	2587	2588	2592	rBV2	381	235	0.02%	0.003%
47	9.490	2621	2628	2630	rBV3	1198	1492	0.16%	0.020%
48	9.693	2686	2691	2696	rBV5	652	693	0.07%	0.009%
49	9.793	2719	2722	2725	rBV2	480	374	0.04%	0.005%
50	9.870	2741	2746	2748	rBV3	1506	1384	0.15%	0.019%
51	9.957	2770	2773	2774	rBV2	321	193	0.02%	0.003%
52	10.050	2798	2802	2803	rBV2	260	194	0.02%	0.003%
53	10.079	2809	2811	2814	rVB2	493	252	0.03%	0.003%
54	10.101	2815	2818	2819	rBV	466	252	0.03%	0.003%
55	10.156	2824	2835	2856	rVV	270446	431179	45.83%	5.813%
56	10.304	2878	2881	2882	rBV2	434	212	0.02%	0.003%
57	10.320	2882	2886	2888	rVV3	668	567	0.06%	0.008%
58	10.336	2889	2891	2896	rVB5	722	461	0.05%	0.006%
59	10.416	2913	2916	2917	rBV	386	267	0.03%	0.004%
60	10.465	2929	2931	2932	rBV	743	306	0.03%	0.004%
61	10.542	2952	2955	2957	rBV3	612	367	0.04%	0.005%
62	10.654	2986	2990	2993	rBV5	496	516	0.05%	0.007%
63	10.696	3000	3003	3005	rBV3	430	226	0.02%	0.003%
64	10.802	3034	3036	3041	rBV4	296	293	0.03%	0.004%
65	10.863	3043	3055	3060	rBV8	2120	4050	0.43%	0.055%
66	10.921	3068	3073	3074	rBV3	482	360	0.04%	0.005%
67	10.953	3081	3083	3085	rBV2	334	194	0.02%	0.003%
68	11.030	3104	3107	3110	rBV3	380	288	0.03%	0.004%
69	11.098	3124	3128	3129	rBV	521	390	0.04%	0.005%
70	11.127	3131	3137	3145	rVV7	2807	4353	0.46%	0.059%
71	11.188	3145	3156	3177	rVV	529352	815872	86.71%	11.000%
72	11.394	3215	3220	3225	rBV6	724	949	0.10%	0.013%
73	11.474	3242	3245	3248	rVB3	573	383	0.04%	0.005%
74	11.513	3254	3257	3261	rVB3	501	303	0.03%	0.004%
75	11.564	3261	3273	3294	rBV	456005	723105	76.85%	9.749%
76	11.796	3343	3345	3348	rBV	279	174	0.02%	0.002%

Data Path : Z:\voasrv\HPCHEM1\MSVOA\_V\Data\VV082523\  
 Data File : VV031924.D  
 Acq On : 25 Aug 2023 10:14  
 Operator : SY/MD  
 Sample : VV0825MBL01  
 Misc : 5.00g/5.0mL/100uL/5.0mL/MSVOA\_V/MEOH  
 ALS Vial : 3 Sample Multiplier: 1

Instrument :  
 MSVOA\_V  
 ClientSampleId :  
 VBLK381

Integration Parameters: LSCINT.P

Integrator: RTE  
 Smoothing : OFF Filtering: 5  
 Sampling : 1 Min Area: 0 % of largest Peak  
 Start Thrs: 0.2 Max Peaks: 100  
 Stop Thrs : 0 Peak Location: TOP

If leading or trailing edge < 100 prefer < Baseline drop else tangent >  
 Peak separation: 5

Method : Z:\voasrv\HPCHEM1\MSVOA\_V\Method\SFAMVLM082323WMA.M  
 Title : VOC Analysis

77	12.024	3414	3416	3418	rBV2	370	218	0.02%	0.003%
78	12.069	3427	3430	3431	rBV2	473	198	0.02%	0.003%
79	12.111	3441	3443	3447	rVB4	399	227	0.02%	0.003%
80	12.133	3447	3450	3451	rBV	434	247	0.03%	0.003%
81	12.162	3456	3459	3462	rVB3	495	318	0.03%	0.004%
82	12.194	3465	3469	3472	rBV3	450	412	0.04%	0.006%
83	12.236	3480	3482	3484	rBV2	361	181	0.02%	0.002%
84	12.403	3532	3534	3535	rBV	494	213	0.02%	0.003%
85	12.455	3547	3550	3552	rBV2	405	264	0.03%	0.004%
86	12.590	3586	3592	3600	rBV6	3061	4166	0.44%	0.056%
87	12.644	3606	3609	3612	rBV3	591	518	0.06%	0.007%
88	12.683	3616	3621	3623	rBV3	718	537	0.06%	0.007%
89	12.709	3623	3629	3632	rBV4	618	571	0.06%	0.008%
90	12.773	3645	3649	3650	rBV4	679	364	0.04%	0.005%
91	12.818	3661	3663	3666	rBV3	535	342	0.04%	0.005%
92	12.902	3687	3689	3693	rBV4	738	580	0.06%	0.008%
93	12.982	3707	3714	3716	rBV2	619	691	0.07%	0.009%
94	12.992	3716	3717	3721	rVV2	277	201	0.02%	0.003%
95	13.069	3738	3741	3745	rBV3	492	456	0.05%	0.006%
96	13.207	3776	3784	3797	rVB4	7312	10797	1.15%	0.146%
97	13.275	3803	3805	3807	rBV3	410	185	0.02%	0.002%
98	13.445	3849	3858	3872	rBV	33558	54854	5.83%	0.740%
99	13.574	3895	3898	3901	rBV2	581	480	0.05%	0.006%
100	13.686	3925	3933	3942	rBV3	9646	14136	1.50%	0.191%

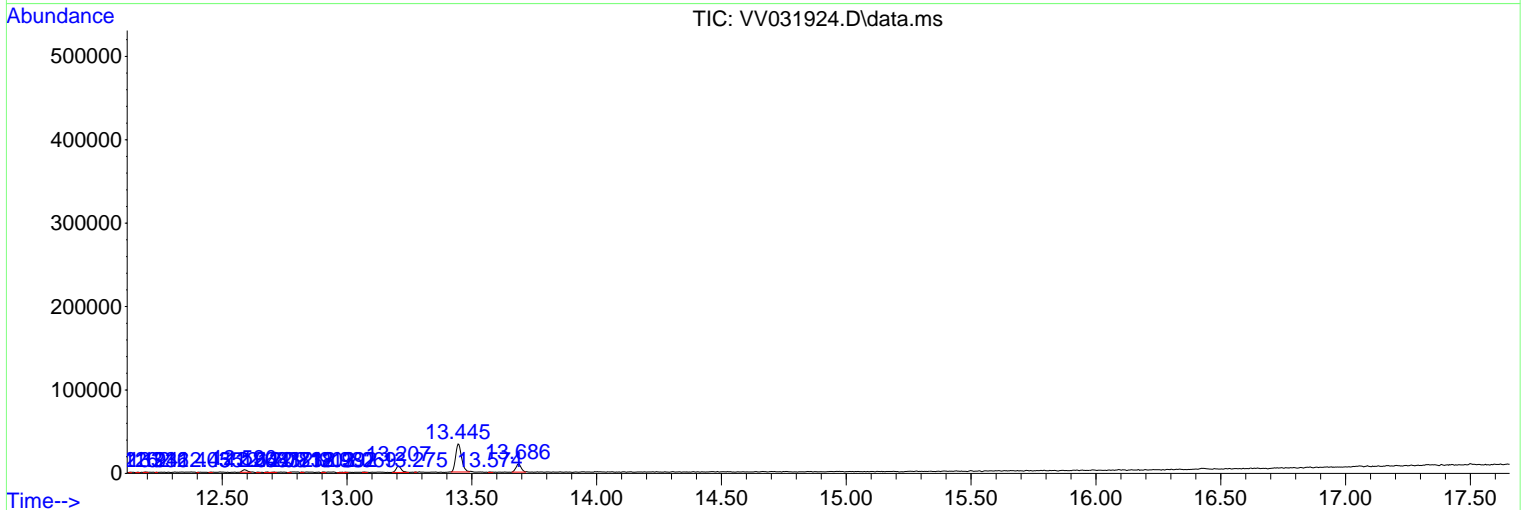
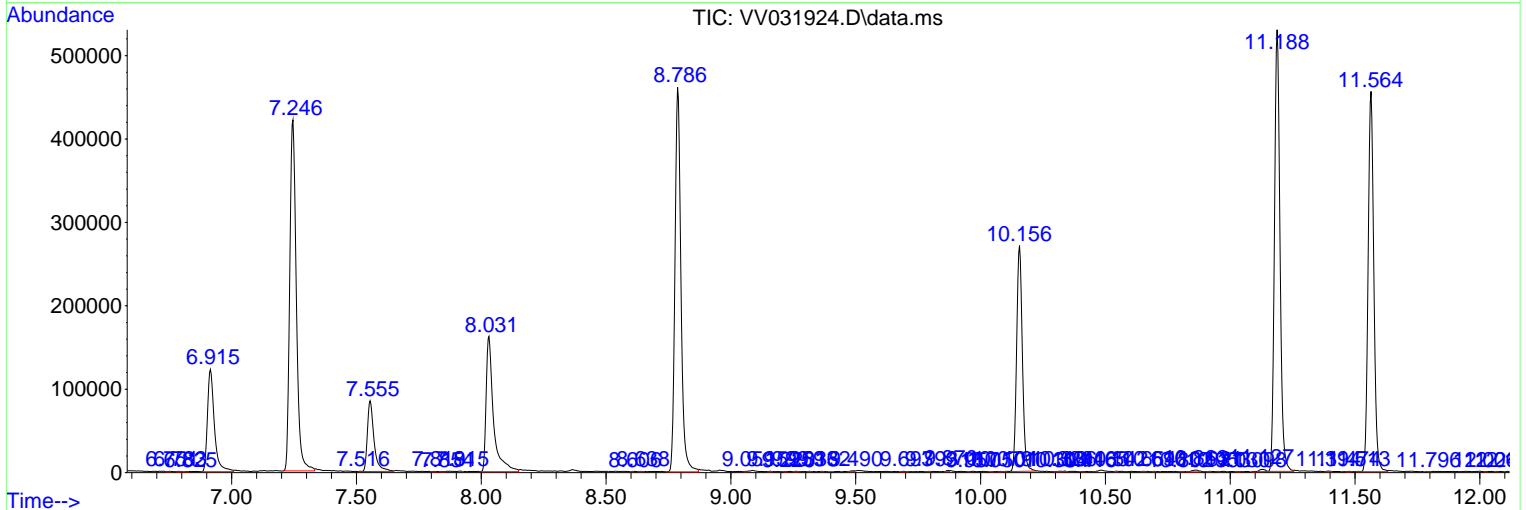
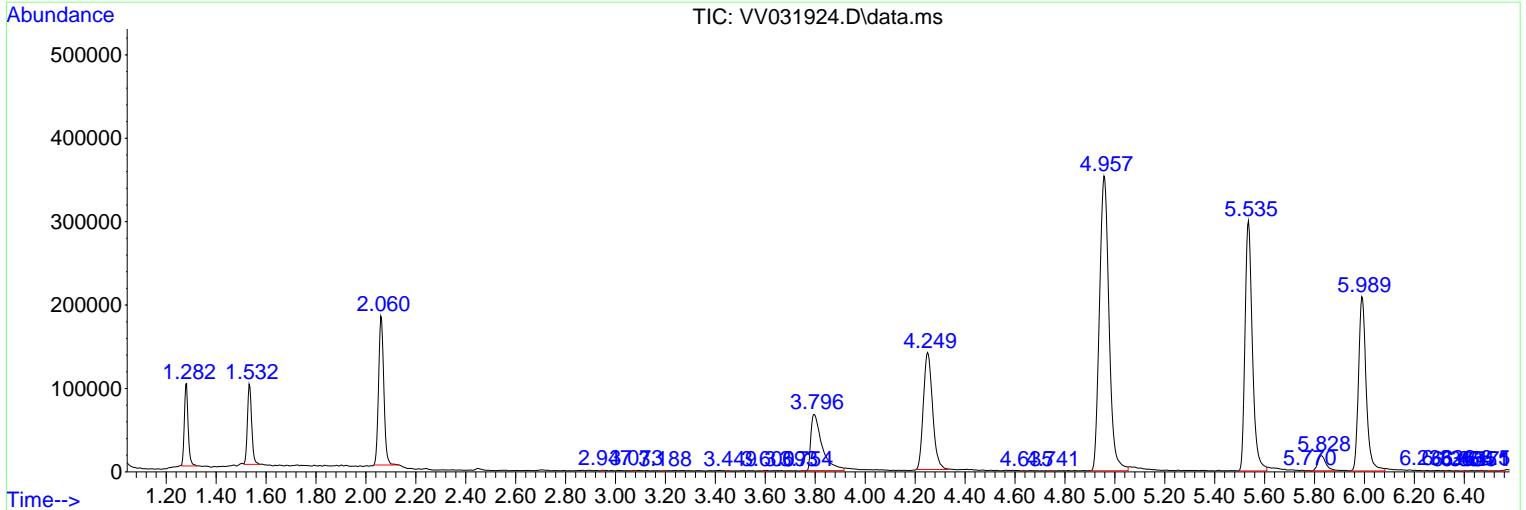
Sum of corrected areas: 7417080

Data Path : Z:\voasrv\HPCHEM1\MSVOA\_V\Data\VV082523\  
 Data File : VV031924.D  
 Acq On : 25 Aug 2023 10:14  
 Operator : SY/MD  
 Sample : VV0825MBL01  
 Misc : 5.00g/5.0mL/100uL/5.0mL/MSVOA\_V/MEOH  
 ALS Vial : 3 Sample Multiplier: 1

Instrument :  
 MSVOA\_V  
 ClientSampleId :  
 VBLK381

Quant Method : Z:\voasrv\HPCHEM1\MSVOA\_V\Method\SFAMVLM082323WMA.M  
 Quant Title : VOC Analysis

TIC Library : C:\Database\NIST20.L  
 TIC Integration Parameters: LSCINT.P



Data Path : Z:\voasrv\HPCHEM1\MSVOA\_V\Data\VV082523\  
Data File : VV031924.D  
Acq On : 25 Aug 2023 10:14  
Operator : SY/MD  
Sample : VV0825MBL01  
Misc : 5.00g/5.0mL/100uL/5.0mL/MSVOA\_V/MEOH  
ALS Vial : 3 Sample Multiplier: 1

Instrument :  
MSVOA\_V  
ClientSampleId :  
VBLK381

Quant Method : Z:\voasrv\HPCHEM1\MSVOA\_V\Method\SFAMVLM082323WMA.M  
Quant Title : VOC Analysis

TIC Library : C:\Database\NIST20.L  
TIC Integration Parameters: LSCINT.P

No Library Search Compounds Detected

\*\*\*\*\*

Data Path : Z:\voasrv\HPCHEM1\MSVOA\_V\Data\VV082523\  
Data File : VV031924.D  
Acq On : 25 Aug 2023 10:14  
Operator : SY/MD  
Sample : VV0825MBL01  
Misc : 5.00g/5.0mL/100uL/5.0mL/MSVOA\_V/MEOH  
ALS Vial : 3 Sample Multiplier: 1

Instrument :  
MSVOA\_V  
ClientSampleId :  
VBLK381

Quant Method : Z:\voasrv\HPCHEM1\MSVOA\_V\Method\SFAMVLM082323WMA.M  
Quant Title : VOC Analysis

TIC Library : C:\Database\NIST0.L  
TIC Integration Parameters: LSCINT.P

TIC Top Hit name	RT	EstConc	Units	Response	--Internal Standard--		
					#	RT	Resp Conc

---