

Data Path : Z:\voasrv\HPCHEM1\MSVOA_V\Data\VV082624\
 Data File : VV037053.D
 Acq On : 27 Aug 2024 01:25
 Operator : SY/MD
 Sample : P3691-08
 Misc : 5.00mL/MSVOA_V/WATER
 ALS Vial : 45 Sample Multiplier: 1

Instrument :
 MSVOA_V
 ClientSampleId :
 E1K51

Integration Parameters: LSCINT.P
 Integrator: RTE
 Smoothing : OFF
 Sampling : 1
 Start Thrs : 0.2
 Stop Thrs : 0
 Filtering: 5
 Min Area: 0 % of largest Peak
 Max Peaks: 100
 Peak Location: TOP

If leading or trailing edge < 100 prefer < Baseline drop else tangent >
 Peak separation: 5

Method : Z:\voasrv\HPCHEM1\MSVOA_V\Method\SFAMVLM082624WMA.M
 Title : VOC Analysis

Signal : TIC: VV037053.D\data.ms

peak #	R.T. min	first scan	max scan	last scan	PK TY	peak height	corr. area	corr. % max.	% of total
1	1.169	34	40	66	rBV	261551	480073	7.91%	1.834%
2	1.282	68	75	100	rVB	5646404	6065968	100.00%	23.173%
3	1.532	146	153	167	rVB	271343	328833	5.42%	1.256%
4	2.056	308	316	331	rVB	578130	827214	13.64%	3.160%
5	3.365	721	723	726	rBV3	1699	983	0.02%	0.004%
6	3.526	771	773	774	rBV2	547	258	0.00%	0.001%
7	3.532	774	775	779	rVB3	1427	755	0.01%	0.003%
8	3.571	785	787	788	rBV	487	179	0.00%	0.001%
9	3.584	788	791	795	rVV6	1253	1013	0.02%	0.004%
10	3.600	795	796	798	rBV2	1054	454	0.01%	0.002%
11	3.629	803	805	807	rVB3	925	376	0.01%	0.001%
12	3.645	807	810	811	rBV3	1006	379	0.01%	0.001%
13	3.806	846	860	902	rBV2	1144328	2819621	46.48%	10.771%
14	4.243	982	996	1025	rVB	385839	966691	15.94%	3.693%
15	4.513	1077	1080	1081	rBV3	1459	641	0.01%	0.002%
16	4.597	1104	1106	1109	rBV4	808	439	0.01%	0.002%
17	4.709	1138	1141	1144	rVB5	1195	674	0.01%	0.003%
18	4.780	1161	1163	1164	rBV2	1205	496	0.01%	0.002%
19	4.847	1182	1184	1185	rBV2	665	359	0.01%	0.001%
20	4.950	1200	1216	1250	rBV2	979469	2458994	40.54%	9.394%
21	5.529	1385	1396	1420	rBV	663733	1350707	22.27%	5.160%
22	5.986	1526	1538	1568	rBV	548931	1117516	18.42%	4.269%
23	6.777	1780	1784	1785	rBV3	1273	752	0.01%	0.003%
24	6.838	1799	1803	1807	rBV5	1352	1148	0.02%	0.004%
25	6.912	1815	1826	1853	rBV	264637	508545	8.38%	1.943%
26	7.240	1917	1928	1955	rBV	1096844	1931655	31.84%	7.379%
27	7.551	2016	2025	2054	rBV	170997	317038	5.23%	1.211%
28	7.934	2140	2144	2147	rBV5	1343	1106	0.02%	0.004%
29	8.024	2163	2172	2203	rBV	387716	780786	12.87%	2.983%
30	8.780	2396	2407	2441	rBV	1039645	1720561	28.36%	6.573%
31	9.262	2554	2557	2560	rVB5	1001	610	0.01%	0.002%
32	9.285	2560	2564	2566	rBV4	1123	853	0.01%	0.003%
33	9.632	2670	2672	2677	rVB5	1162	699	0.01%	0.003%
34	9.686	2687	2689	2692	rBV4	815	390	0.01%	0.001%
35	9.828	2730	2733	2734	rBV2	987	376	0.01%	0.001%
36	9.895	2752	2754	2757	rBV4	852	432	0.01%	0.002%

Data Path : Z:\voasrv\HPCHEM1\MSVOA_V\Data\VV082624\
 Data File : VV037053.D
 Acq On : 27 Aug 2024 01:25
 Operator : SY/MD
 Sample : P3691-08
 Misc : 5.00mL/MSVOA_V/WATER
 ALS Vial : 45 Sample Multiplier: 1

Instrument :
 MSVOA_V
 ClientSampleId :
 E1K51

Integration Parameters: LSCINT.P

Integrator: RTE
 Smoothing : OFF
 Sampling : 1
 Start Thrs : 0.2
 Stop Thrs : 0

Filtering: 5
 Min Area: 0 % of largest Peak
 Max Peaks: 100
 Peak Location: TOP

If leading or trailing edge < 100 prefer < Baseline drop else tangent >
 Peak separation: 5

Method : Z:\voasrv\HPCHEM1\MSVOA_V\Method\SFAMVLM082624WMA.M
 Title : VOC Analysis

37	10.075	2807	2810	2811	rBV3	1272	662	0.01%	0.003%
38	10.149	2821	2833	2852	rBV	659738	1052448	17.35%	4.020%
39	10.387	2905	2907	2910	rBV4	1048	581	0.01%	0.002%
40	10.603	2972	2974	2977	rVB4	1113	553	0.01%	0.002%
41	10.699	3002	3004	3005	rBV2	465	184	0.00%	0.001%
42	10.722	3008	3011	3013	rBV4	1624	1133	0.02%	0.004%
43	10.883	3059	3061	3062	rBV2	1098	409	0.01%	0.002%
44	10.908	3067	3069	3072	rBV4	753	515	0.01%	0.002%
45	10.940	3075	3079	3083	rBV6	1013	859	0.01%	0.003%
46	10.956	3083	3084	3085	rBV	744	256	0.00%	0.001%
47	11.063	3113	3117	3118	rBV4	968	693	0.01%	0.003%
48	11.120	3132	3135	3136	rBV4	1876	990	0.02%	0.004%
49	11.182	3142	3154	3185	rBV	1038136	1666149	27.47%	6.365%
50	11.555	3259	3270	3300	rBV	1092159	1753479	28.91%	6.698%
51	12.111	3441	3443	3444	rBV3	1073	269	0.00%	0.001%
52	12.162	3456	3459	3464	rVB6	1936	1509	0.02%	0.006%
53	12.181	3464	3465	3467	rBV	687	365	0.01%	0.001%
54	12.513	3567	3568	3570	rBV2	955	451	0.01%	0.002%
55	12.625	3601	3603	3607	rVB4	1241	820	0.01%	0.003%
56	12.651	3607	3611	3615	rBV6	986	738	0.01%	0.003%
57	12.677	3615	3619	3620	rBV4	890	616	0.01%	0.002%
58	12.799	3655	3657	3663	rBV5	969	917	0.02%	0.004%
59	12.847	3670	3672	3673	rBV2	908	378	0.01%	0.001%
60	13.185	3774	3777	3779	rBV2	1710	1071	0.02%	0.004%
61	13.416	3845	3849	3855	rBV7	2205	2473	0.04%	0.009%
62	13.567	3894	3896	3897	rBV2	868	288	0.00%	0.001%
63	13.673	3927	3929	3932	rBV3	1608	972	0.02%	0.004%

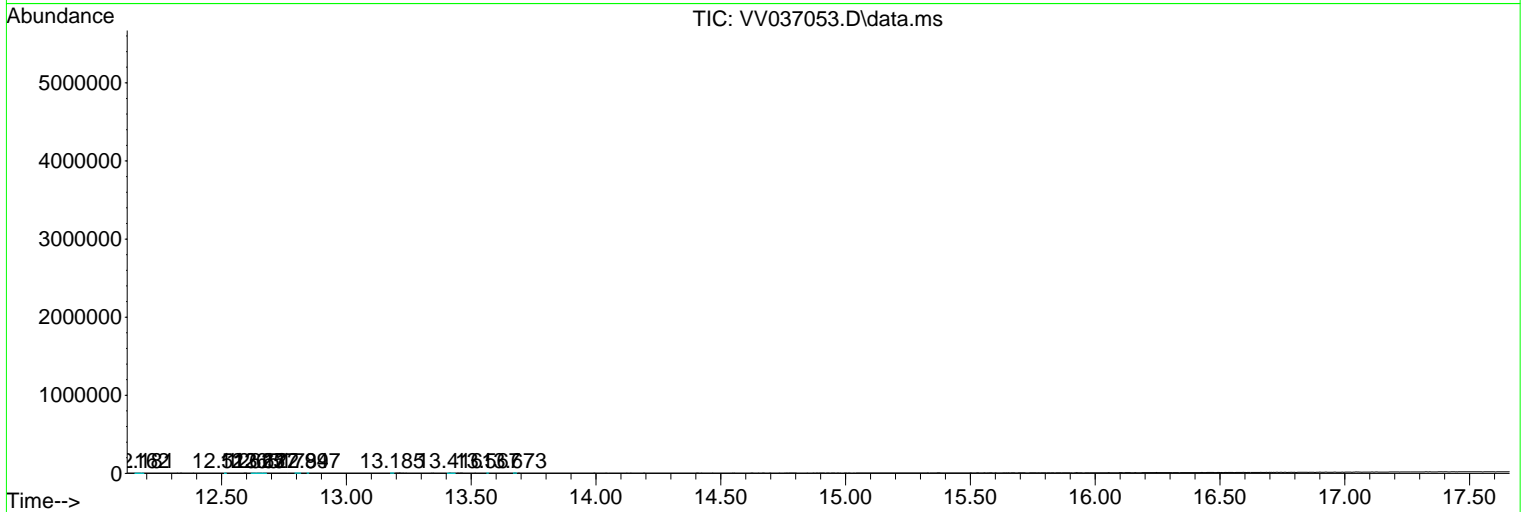
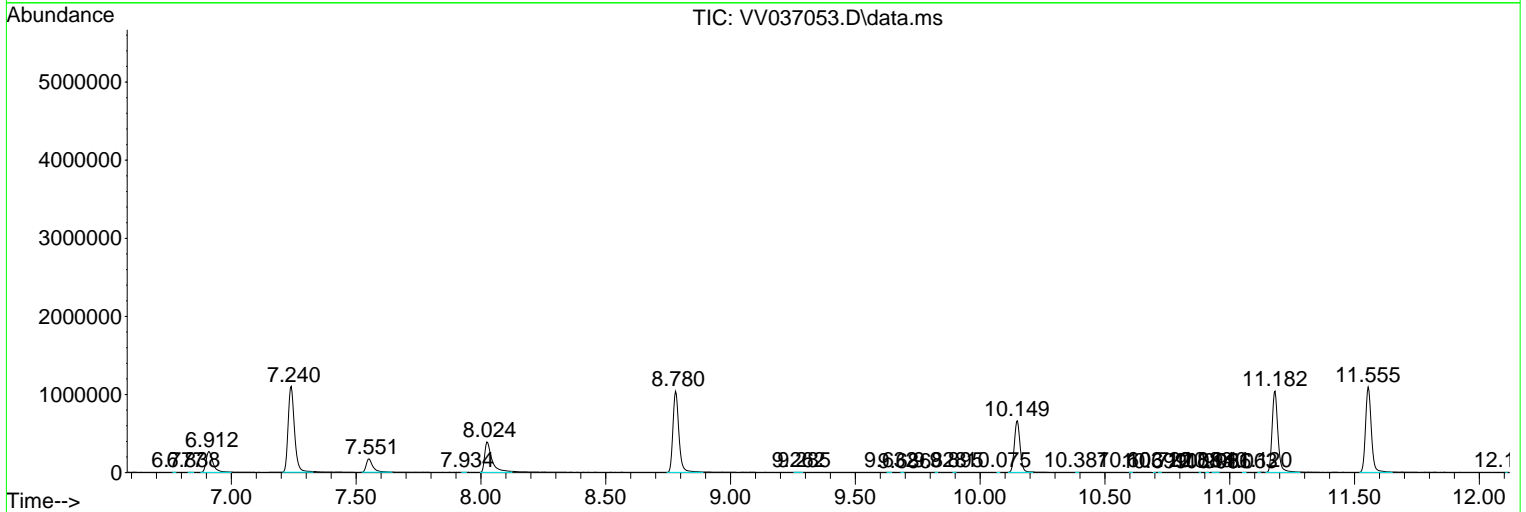
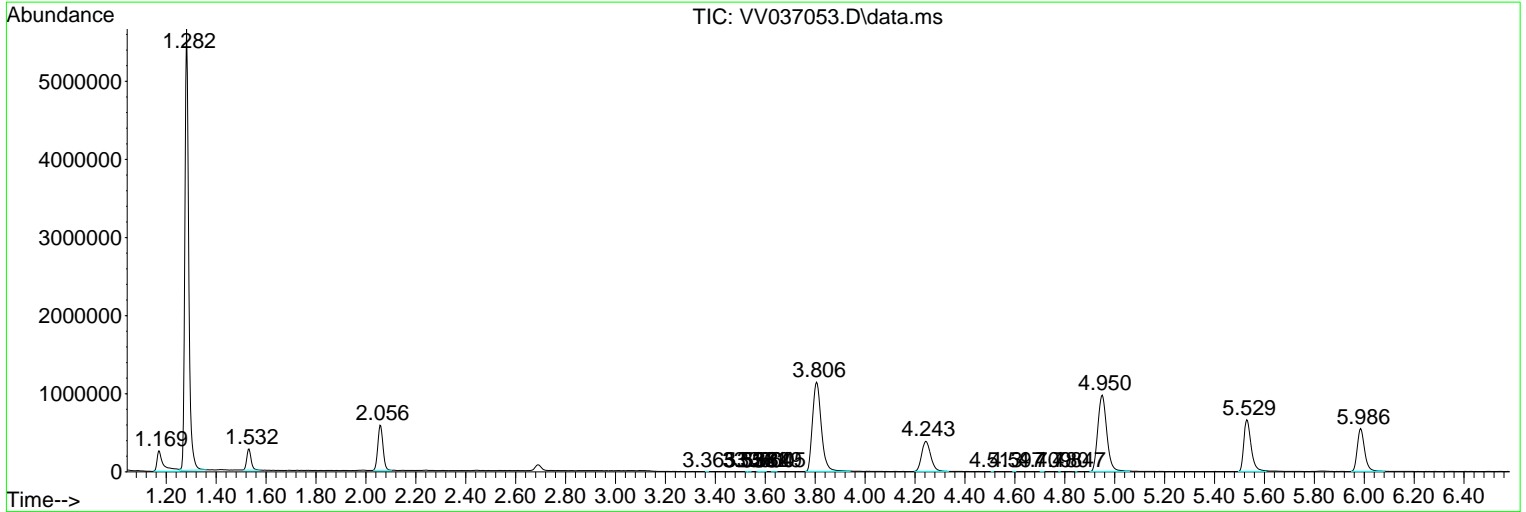
Sum of corrected areas: 26177352

Data Path : Z:\voasrv\HPCHEM1\MSVOA_V\Data\VV082624\
 Data File : VV037053.D
 Acq On : 27 Aug 2024 01:25
 Operator : SY/MD
 Sample : P3691-08
 Misc : 5.00mL/MSVOA_V/WATER
 ALS Vial : 45 Sample Multiplier: 1

Instrument :
 MSVOA_V
 ClientSampleId :
 E1K51

Quant Method : Z:\voasrv\HPCHEM1\MSVOA_V\Method\SFAMVLM082624WMA.M
 Quant Title : VOC Analysis

TIC Library : C:\Database\NIST20.L
 TIC Integration Parameters: LSCINT.P



Data Path : Z:\voasrv\HPCHEM1\MSVOA_V\Data\VV082624\
 Data File : VV037053.D
 Acq On : 27 Aug 2024 01:25
 Operator : SY/MD
 Sample : P3691-08
 Misc : 5.00mL/MSVOA_V/WATER
 ALS Vial : 45 Sample Multiplier: 1

Instrument :
 MSVOA_V
 ClientSampleId :
 E1K51

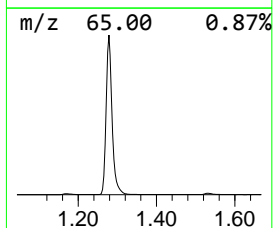
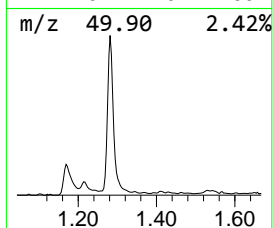
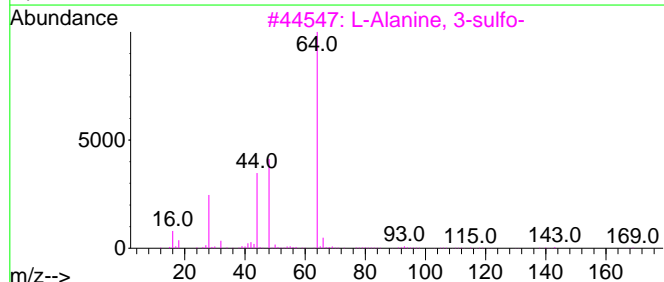
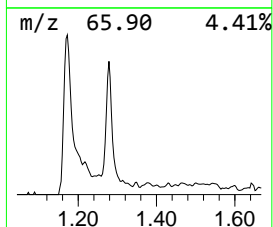
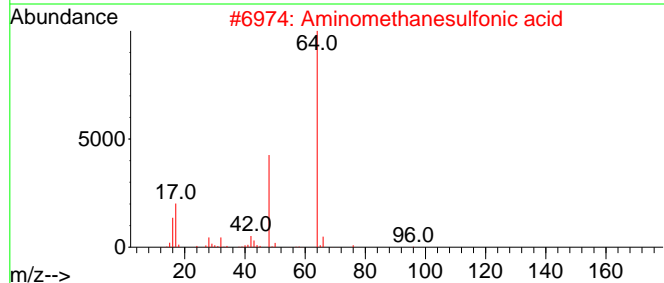
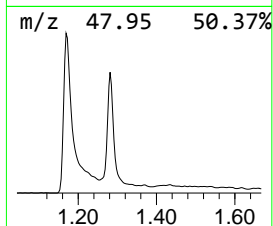
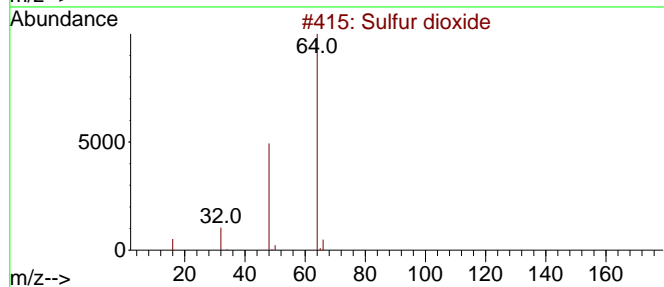
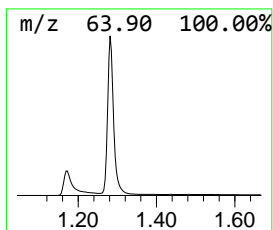
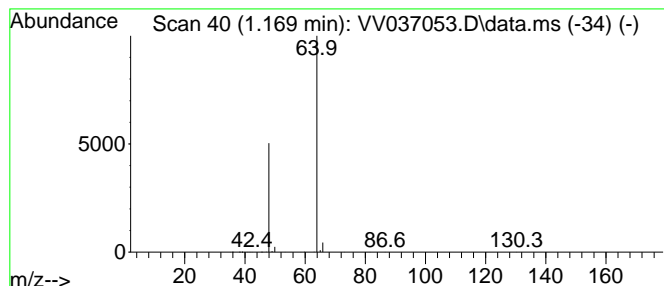
Quant Method : Z:\voasrv\HPCHEM1\MSVOA_V\Method\SFAMVLM082624WMA.M
 Quant Title : VOC Analysis

TIC Library : C:\Database\NIST20.L
 TIC Integration Parameters: LSCINT.P

 Peak Number 1 Sulfur dioxide Concentration Rank 2

R.T.	EstConc	Area	Relative to ISTD	R.T.
1.169	17.77 ug/L	480073	1,4-Difluorobenzene	5.529

Hit#	of	5	Tentative ID	MW	MolForm	CAS#	Qual
1			Sulfur dioxide	64	O2S	007446-09-5	83
2			Aminomethanesulfonic acid	111	CH5NO3S	013881-91-9	74
3			L-Alanine, 3-sulfo-	169	C3H7NO5S	000498-40-8	9
4			Aminomethanesulfonic acid	111	CH5NO3S	013881-91-9	9
5			Ethene, 1,1-difluoro-	64	C2H2F2	000075-38-7	4



Data Path : Z:\voasrv\HPCHEM1\MSVOA_V\Data\VV082624\
Data File : VV037053.D
Acq On : 27 Aug 2024 01:25
Operator : SY/MD
Sample : P3691-08
Misc : 5.00mL/MSVOA_V/WATER
ALS Vial : 45 Sample Multiplier: 1

Instrument :
MSVOA_V
ClientSampleId :
E1K51

Quant Method : Z:\voasrv\HPCHEM1\MSVOA_V\Method\SFAMVLM082624WMA.M
Quant Title : VOC Analysis

TIC Library : C:\Database\NIST20.L
TIC Integration Parameters: LSCINT.P

TIC Top Hit name	RT	EstConc	Units	Response	--Internal Standard--			
					#	RT	Resp	Conc
Sulfur dioxide	1.169	17.8	ug/L	480073	1	5.529	1350710	50.0