

Data Path : Z:\voasrv\HPCHEM1\MSVOA\_V\Data\VV082823\  
 Data File : VV031946.D  
 Acq On : 28 Aug 2023 16:24  
 Operator : SY/MD  
 Sample : 04175-05ME  
 Misc : 6.08g/5.0mL/100uL/5.0mL/MSVOA\_V/MEOH  
 ALS Vial : 8 Sample Multiplier: 1

Instrument :  
 MSVOA\_V  
 ClientSampleId :  
 EZYX0ME

Integration Parameters: LSCINT.P

Integrator: RTE  
 Smoothing : OFF Filtering: 5  
 Sampling : 1 Min Area: 0 % of largest Peak  
 Start Thrs: 0.2 Max Peaks: 100  
 Stop Thrs : 0 Peak Location: TOP

If leading or trailing edge < 100 prefer < Baseline drop else tangent >  
 Peak separation: 5

Method : Z:\voasrv\HPCHEM1\MSVOA\_V\Method\SFAMVLM082323WMA.M  
 Title : VOC Analysis

Signal : TIC: VV031946.D\data.ms

peak #	R.T. min	first scan	max scan	last scan	PK TY	peak height	corr. area	corr. % max.	% of total
1	1.278	68	74	97	rVB	99294	153937	9.82%	1.633%
2	2.040	302	311	328	rVB	262586	384167	24.50%	4.074%
3	3.085	634	636	639	rVB	524	252	0.02%	0.003%
4	3.118	644	646	650	rBV	402	272	0.02%	0.003%
5	3.462	751	753	754	rBV	232	97	0.01%	0.001%
6	3.655	809	813	814	rBV2	599	382	0.02%	0.004%
7	3.735	836	838	839	rBV2	351	96	0.01%	0.001%
8	3.809	851	861	910	rBV2	93088	362447	23.12%	3.844%
9	4.249	983	998	1031	rBV	230388	618770	39.47%	6.562%
10	4.699	1135	1138	1140	rBV3	632	402	0.03%	0.004%
11	4.728	1145	1147	1148	rBV2	201	64	0.00%	0.001%
12	4.825	1172	1177	1178	rBV4	240	238	0.02%	0.003%
13	4.953	1201	1217	1249	rBV2	606977	1567862	100.00%	16.628%
14	5.484	1377	1382	1387	rBV3	461	531	0.03%	0.006%
15	5.539	1387	1399	1435	rBV	174837	390340	24.90%	4.140%
16	5.825	1478	1488	1513	rBV2	19913	48195	3.07%	0.511%
17	5.931	1513	1521	1526	rBV5	2619	4884	0.31%	0.052%
18	5.992	1527	1540	1578	rVB	344792	760608	48.51%	8.066%
19	6.320	1640	1642	1645	rVB2	376	176	0.01%	0.002%
20	6.355	1649	1653	1656	rBV4	462	331	0.02%	0.004%
21	6.420	1670	1673	1674	rBV2	198	136	0.01%	0.001%
22	6.471	1687	1689	1690	rVB2	329	90	0.01%	0.001%
23	6.490	1690	1695	1699	rBV6	574	449	0.03%	0.005%
24	6.516	1699	1703	1710	rBV5	500	590	0.04%	0.006%
25	6.780	1783	1785	1788	rBV3	409	181	0.01%	0.002%
26	6.841	1802	1804	1806	rBV3	351	193	0.01%	0.002%
27	6.915	1816	1827	1857	rBV	199380	403448	25.73%	4.279%
28	7.246	1918	1930	1969	rBV	669056	1228272	78.34%	13.026%
29	7.558	2017	2027	2057	rBV	132136	274292	17.49%	2.909%
30	7.838	2112	2114	2118	rBV3	434	310	0.02%	0.003%
31	7.876	2122	2126	2129	rBV4	625	622	0.04%	0.007%
32	7.947	2145	2148	2149	rBV	387	206	0.01%	0.002%
33	7.969	2153	2155	2161	rVB5	796	685	0.04%	0.007%
34	8.002	2161	2165	2166	rBV2	692	471	0.03%	0.005%
35	8.037	2167	2176	2179	rBV	129187	171233	10.92%	1.816%
36	8.545	2332	2334	2336	rBV2	506	259	0.02%	0.003%

Data Path : Z:\voasrv\HPCHEM1\MSVOA\_V\Data\VV082823\  
 Data File : VV031946.D  
 Acq On : 28 Aug 2023 16:24  
 Operator : SY/MD  
 Sample : 04175-05ME  
 Misc : 6.08g/5.0mL/100uL/5.0mL/MSVOA\_V/MEOH  
 ALS Vial : 8 Sample Multiplier: 1

Instrument :  
 MSVOA\_V  
 ClientSampleId :  
 EZYX0ME

Integration Parameters: LSCINT.P

Integrator: RTE  
 Smoothing : OFF  
 Sampling : 1  
 Start Thrs : 0.2  
 Stop Thrs : 0

Filtering: 5  
 Min Area: 0 % of largest Peak  
 Max Peaks: 100  
 Peak Location: TOP

If leading or trailing edge < 100 prefer < Baseline drop else tangent >  
 Peak separation: 5

Method : Z:\voasrv\HPCHEM1\MSVOA\_V\Method\SFAMVLM082323WMA.M  
 Title : VOC Analysis

37	8.654	2364	2368	2373	rBV5	754	805	0.05%	0.009%
38	8.709	2383	2385	2387	rBV2	832	449	0.03%	0.005%
39	8.793	2399	2411	2447	rBV	254974	491697	31.36%	5.215%
40	9.069	2493	2497	2499	rBV2	586	436	0.03%	0.005%
41	9.137	2514	2518	2523	rBV4	593	599	0.04%	0.006%
42	9.220	2543	2544	2547	rVB2	356	105	0.01%	0.001%
43	9.239	2547	2550	2553	rBV2	383	294	0.02%	0.003%
44	9.333	2576	2579	2581	rBV3	273	178	0.01%	0.002%
45	9.362	2585	2588	2591	rVB4	611	404	0.03%	0.004%
46	9.387	2591	2596	2598	rBV4	530	502	0.03%	0.005%
47	9.432	2607	2610	2612	rBV2	642	428	0.03%	0.005%
48	9.445	2612	2614	2617	rVB3	732	388	0.02%	0.004%
49	9.461	2617	2619	2621	rBV	409	163	0.01%	0.002%
50	9.477	2622	2624	2626	rBB	415	121	0.01%	0.001%
51	9.487	2626	2627	2628	rBV	374	125	0.01%	0.001%
52	9.564	2649	2651	2653	rBV3	370	217	0.01%	0.002%
53	9.622	2667	2669	2672	rBV2	175	93	0.01%	0.001%
54	9.635	2672	2673	2674	rBV2	154	32	0.00%	0.000%
55	9.651	2675	2678	2683	rBV4	599	492	0.03%	0.005%
56	9.674	2683	2685	2689	rBV2	264	156	0.01%	0.002%
57	9.693	2689	2691	2694	rBV2	381	255	0.02%	0.003%
58	9.725	2698	2701	2702	rBV2	463	249	0.02%	0.003%
59	9.767	2712	2714	2717	rVB2	562	289	0.02%	0.003%
60	9.783	2717	2719	2721	rBV	171	117	0.01%	0.001%
61	9.799	2722	2724	2725	rVV2	273	118	0.01%	0.001%
62	9.821	2729	2731	2735	rVB2	324	172	0.01%	0.002%
63	9.841	2735	2737	2740	rBV4	693	467	0.03%	0.005%
64	9.876	2746	2748	2749	rBV2	216	108	0.01%	0.001%
65	9.944	2765	2769	2772	rBV4	495	448	0.03%	0.005%
66	10.008	2784	2789	2790	rBV3	305	220	0.01%	0.002%
67	10.079	2808	2811	2814	rVB2	417	234	0.01%	0.002%
68	10.098	2814	2817	2818	rBV	239	131	0.01%	0.001%
69	10.162	2825	2837	2858	rBV	448311	821819	52.42%	8.716%
70	10.487	2935	2938	2939	rBV2	491	277	0.02%	0.003%
71	10.587	2965	2969	2970	rBV3	643	398	0.03%	0.004%
72	10.625	2978	2981	2983	rVB2	573	334	0.02%	0.004%
73	10.693	3001	3002	3003	rBV	254	93	0.01%	0.001%
74	10.850	3049	3051	3052	rBV2	438	175	0.01%	0.002%
75	10.973	3087	3089	3095	rBV4	479	369	0.02%	0.004%
76	11.075	3116	3121	3129	rVB3	653	877	0.06%	0.009%

Data Path : Z:\voasrv\HPCHEM1\MSVOA\_V\Data\VW082823\  
 Data File : VW031946.D  
 Acq On : 28 Aug 2023 16:24  
 Operator : SY/MD  
 Sample : 04175-05ME  
 Misc : 6.08g/5.0mL/100uL/5.0mL/MSVOA\_V/MEOH  
 ALS Vial : 8 Sample Multiplier: 1

Instrument :  
 MSVOA\_V  
 ClientSampleId :  
 EZYX0ME

Integration Parameters: LSCINT.P

Integrator: RTE  
 Smoothing : OFF Filtering: 5  
 Sampling : 1 Min Area: 0 % of largest Peak  
 Start Thrs: 0.2 Max Peaks: 100  
 Stop Thrs : 0 Peak Location: TOP

If leading or trailing edge < 100 prefer < Baseline drop else tangent >  
 Peak separation: 5

Method : Z:\voasrv\HPCHEM1\MSVOA\_V\Method\SFAMVLM082323WMA.M  
 Title : VOC Analysis

77	11.120	3129	3135	3137	rBV3	650	697	0.04%	0.007%
78	11.194	3147	3158	3179	rBV	320639	509009	32.47%	5.398%
79	11.445	3233	3236	3239	rBV4	494	423	0.03%	0.004%
80	11.513	3253	3257	3258	rBV3	433	225	0.01%	0.002%
81	11.522	3258	3260	3261	rBV	278	135	0.01%	0.001%
82	11.567	3261	3274	3302	rVV	737092	1210466	77.20%	12.837%
83	11.860	3361	3365	3366	rBV2	493	294	0.02%	0.003%
84	11.908	3376	3380	3382	rVB2	418	299	0.02%	0.003%
85	11.937	3386	3389	3392	rBV3	553	445	0.03%	0.005%
86	12.005	3408	3410	3413	rBV3	538	357	0.02%	0.004%
87	12.040	3417	3421	3423	rBV3	617	504	0.03%	0.005%
88	12.075	3430	3432	3434	rBV2	390	220	0.01%	0.002%
89	12.111	3440	3443	3445	rBV3	378	232	0.01%	0.002%
90	12.127	3445	3448	3453	rVB2	467	414	0.03%	0.004%
91	12.165	3455	3460	3462	rBV2	489	367	0.02%	0.004%
92	12.227	3477	3479	3480	rBV2	316	125	0.01%	0.001%
93	12.535	3573	3575	3577	rBV2	291	114	0.01%	0.001%
94	12.657	3612	3613	3616	rVB2	513	250	0.02%	0.003%
95	12.683	3616	3621	3626	rVB7	567	745	0.05%	0.008%
96	12.808	3658	3660	3661	rBV2	389	139	0.01%	0.001%
97	12.831	3664	3667	3675	rVV7	1350	1500	0.10%	0.016%
98	12.908	3689	3691	3696	rVB3	714	634	0.04%	0.007%
99	12.934	3696	3699	3707	rBV4	512	675	0.04%	0.007%
100	13.098	3747	3750	3754	rBV3	912	660	0.04%	0.007%

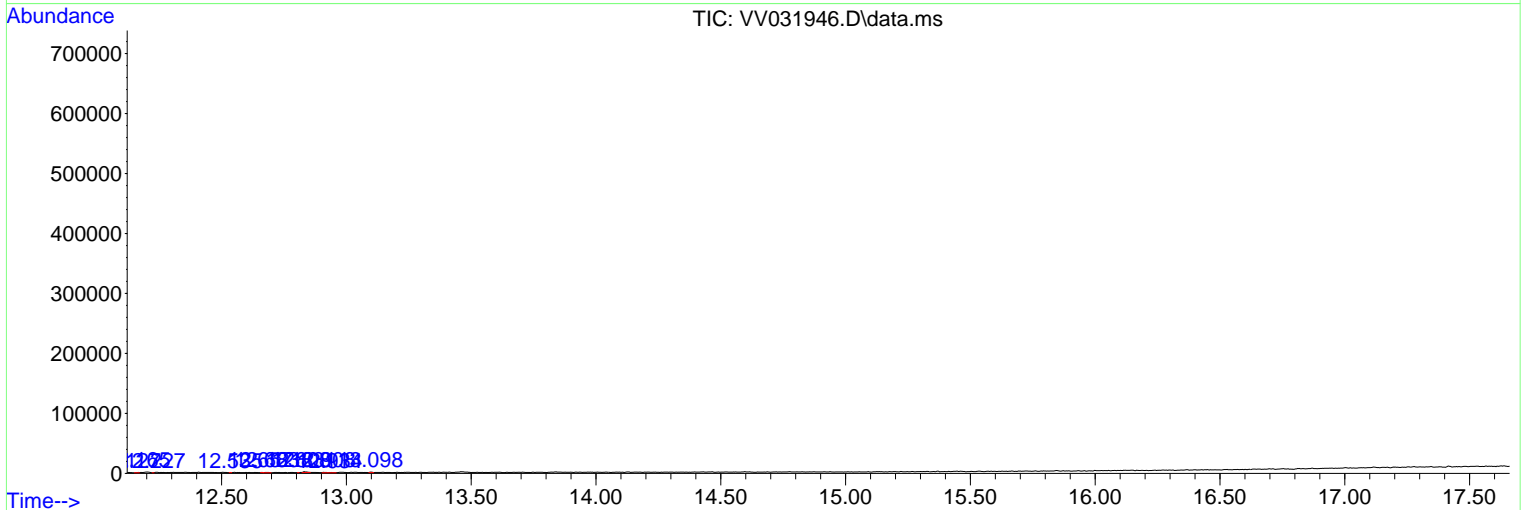
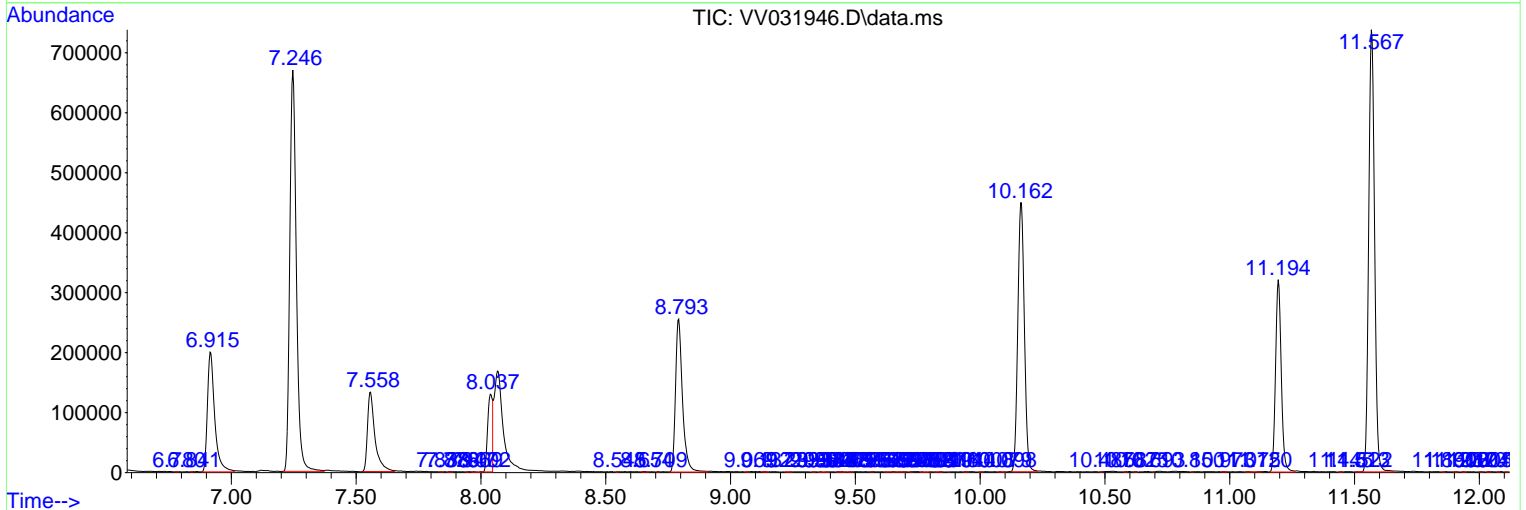
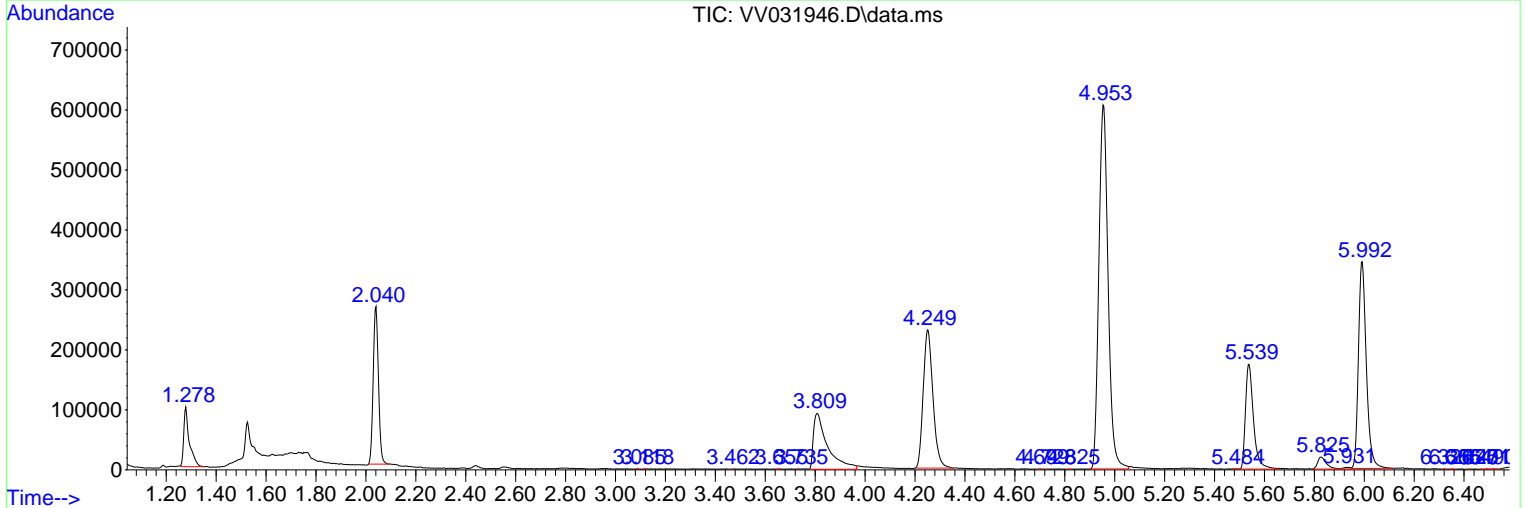
Sum of corrected areas: 9429251

Data Path : Z:\voasrv\HPCHEM1\MSVOA\_V\Data\VV082823\  
 Data File : VV031946.D  
 Acq On : 28 Aug 2023 16:24  
 Operator : SY/MD  
 Sample : 04175-05ME  
 Misc : 6.08g/5.0mL/100uL/5.0mL/MSVOA\_V/MEOH  
 ALS Vial : 8 Sample Multiplier: 1

Instrument :  
 MSVOA\_V  
 ClientSampleId :  
 EZYX0ME

Quant Method : Z:\voasrv\HPCHEM1\MSVOA\_V\Method\SFAMVLM082323WMA.M  
 Quant Title : VOC Analysis

TIC Library : C:\Database\NIST20.L  
 TIC Integration Parameters: LSCINT.P



Data Path : Z:\voasrv\HPCHEM1\MSVOA\_V\Data\VV082823\  
Data File : VV031946.D  
Acq On : 28 Aug 2023 16:24  
Operator : SY/MD  
Sample : 04175-05ME  
Misc : 6.08g/5.0mL/100uL/5.0mL/MSVOA\_V/MEOH  
ALS Vial : 8 Sample Multiplier: 1

Instrument :  
MSVOA\_V  
ClientSampleId :  
EZYX0ME

Quant Method : Z:\voasrv\HPCHEM1\MSVOA\_V\Method\SFAMVLM082323WMA.M  
Quant Title : VOC Analysis

TIC Library : C:\Database\NIST20.L  
TIC Integration Parameters: LSCINT.P

No Library Search Compounds Detected

\*\*\*\*\*

Data Path : Z:\voasrv\HPCHEM1\MSVOA\_V\Data\VV082823\  
Data File : VV031946.D  
Acq On : 28 Aug 2023 16:24  
Operator : SY/MD  
Sample : 04175-05ME  
Misc : 6.08g/5.0mL/100uL/5.0mL/MSVOA\_V/MEOH  
ALS Vial : 8 Sample Multiplier: 1

Instrument :  
MSVOA\_V  
ClientSampleId :  
EZYX0ME

Quant Method : Z:\voasrv\HPCHEM1\MSVOA\_V\Method\SFAMVLM082323WMA.M  
Quant Title : VOC Analysis

TIC Library : C:\Database\NIST0.L  
TIC Integration Parameters: LSCINT.P

TIC Top Hit name	RT	EstConc	Units	Response	--Internal Standard--			
					#	RT	Resp	Conc

---