

Data Path : Z:\VOASRV\HPCHEM1\MSVOA V\DATA\VV082918\  
 Data File : VV007258.D  
 Acq On : 29 Aug 2018 15:22  
 Operator : SY/MD  
 Sample : J4649-06DL 4X  
 Misc : 25.0 mL/MSVOA V/WATER  
 ALS Vial : 12 Sample Multiplier: 1

Instrument :  
 MSVOA\_V  
 ClientSampleID :  
 GAB91DL

Quant Time: Aug 30 05:30:31 2018  
 Quant Method : Z:\VOASRV\HPCHEM1\MSVOA\_V\METHOD\SOMVTR082818WMA.M  
 Quant Title : TRACE VOA SOM01.0  
 QLast Update : Thu Aug 30 04:42:02 2018  
 Response via : Initial Calibration

Internal Standards	R.T.	QIon	Response	Conc	Units	Dev(Min)
1) 1,4-Difluorobenzene	5.67	114	237601	5.00	ug/L	0.00
28) Chlorobenzene-d5	8.90	117	243453	5.00	ug/L	0.00
60) 1,4-Dichlorobenzene-d4	11.30	152	100936	5.00	ug/L	0.00

System Monitoring Compounds

4) Vinyl Chloride-d3	1.32	65	70701	4.19	ug/L	0.00
Spiked Amount	5.000	Range	40 - 130	Recovery	=	83.80%
7) Chloroethane-d5	1.58	69	64714	4.76	ug/L	0.00
Spiked Amount	5.000	Range	65 - 130	Recovery	=	95.20%
11) 1,1-Dichloroethene-d2	2.13	63	98564	3.38	ug/L	0.00
Spiked Amount	5.000	Range	60 - 125	Recovery	=	67.60%
20) 2-Butanone-d5	3.97	46	235185	55.85	ug/L	0.00
Spiked Amount	50.000	Range	40 - 130	Recovery	=	111.70%
24) Chloroform-d	4.41	84	164080	4.82	ug/L	0.00
Spiked Amount	5.000	Range	70 - 125	Recovery	=	96.40%
26) 1,2-Dichloroethane-d4	5.09	65	86109	5.07	ug/L	0.00
Spiked Amount	5.000	Range	70 - 130	Recovery	=	101.40%
32) Benzene-d6	5.10	84	306752	4.43	ug/L	0.00
Spiked Amount	5.000	Range	70 - 125	Recovery	=	88.60%
36) 1,2-Dichloropropane-d6	6.12	67	106548	4.73	ug/L	0.00
Spiked Amount	5.000	Range	60 - 140	Recovery	=	94.60%
41) Toluene-d8	7.37	98	230993	3.84	ug/L	0.00
Spiked Amount	5.000	Range	70 - 130	Recovery	=	76.80%
43) trans-1,3-Dichloropropene-	7.67	79	34167	4.27	ug/L	0.00
Spiked Amount	5.000	Range	55 - 130	Recovery	=	85.40%
46) 2-Hexanone-d5	8.15	63	87764	41.73	ug/L	0.00
Spiked Amount	50.000	Range	45 - 130	Recovery	=	83.46%
57) 1,1,2,2-Tetrachloroethane-	10.27	84	84899	4.85	ug/L	0.00
Spiked Amount	5.000	Range	65 - 120	Recovery	=	97.00%
64) 1,2-Dichlorobenzene-d4	11.68	152	94576	4.88	ug/L	0.00
Spiked Amount	5.000	Range	80 - 120	Recovery	=	97.60%

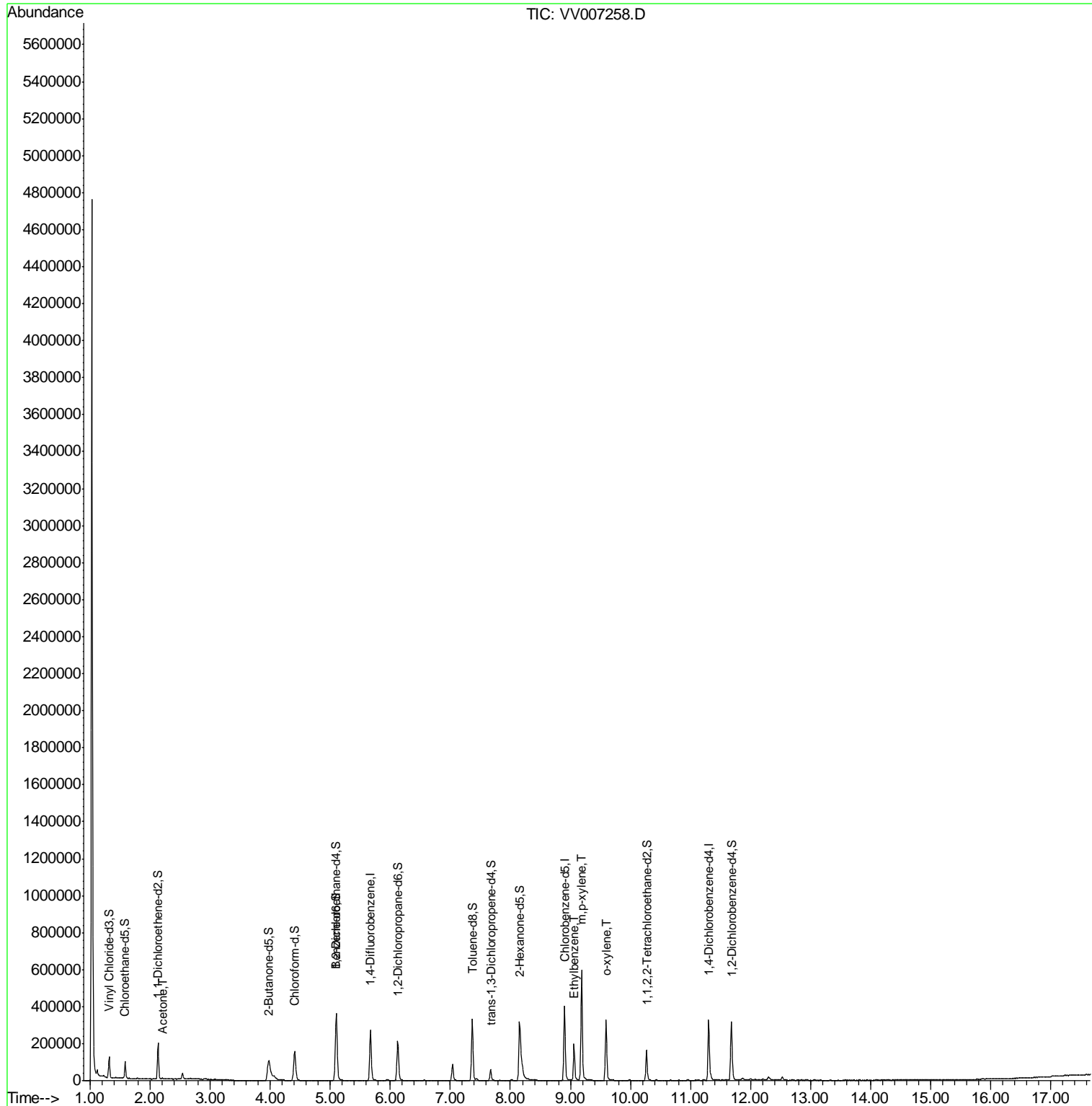
Target Compounds					Ovalue
13) Acetone	2.21	43	4185	1.98	ug/L 99
52) Ethylbenzene	9.06	91	140193	1.97	ug/L 97
53) m,p-xylene	9.19	106	178327	6.58	ug/L 96
54) o-xylene	9.59	106	90693	3.60	ug/L 99

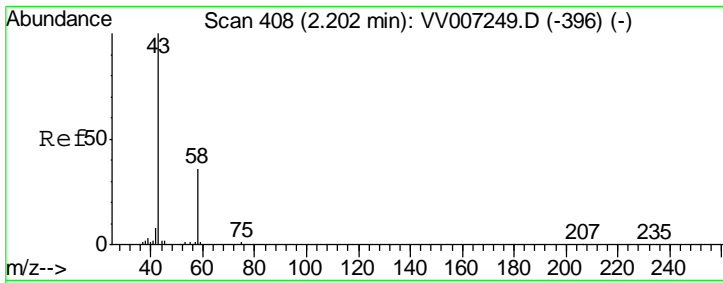
(#) = qualifier out of range (m) = manual integration (+) = signals summed

Data Path : Z:\VOASRV\HPCHEM1\MSVOA V\DATA\VV082918\  
 Data File : VV007258.D  
 Acq On : 29 Aug 2018 15:22  
 Operator : SY/MD  
 Sample : J4649-06DL 4X  
 Misc : 25.0 mL/MSVOA V/WATER  
 ALS Vial : 12 Sample Multiplier: 1

Instrument :  
 MSVOA\_V  
 ClientSampleId :  
 GAB91DL

Quant Time: Aug 30 05:30:31 2018  
 Quant Method : Z:\VOASRV\HPCHEM1\MSVOA\_V\METHOD\SOMVTR082818WMA.M  
 Quant Title : TRACE VOA SOM01.0  
 QLast Update : Thu Aug 30 04:42:02 2018  
 Response via : Initial Calibration

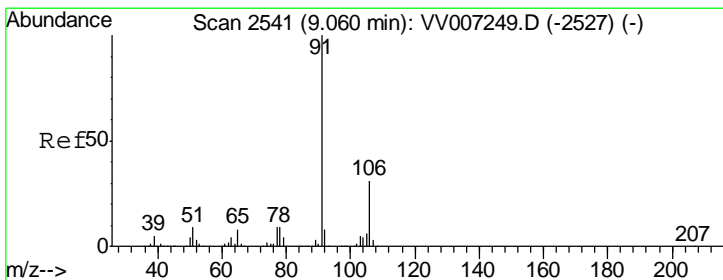
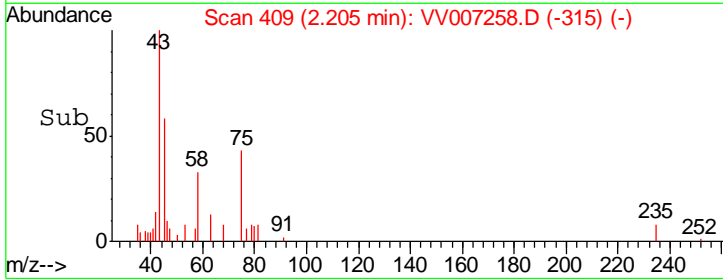
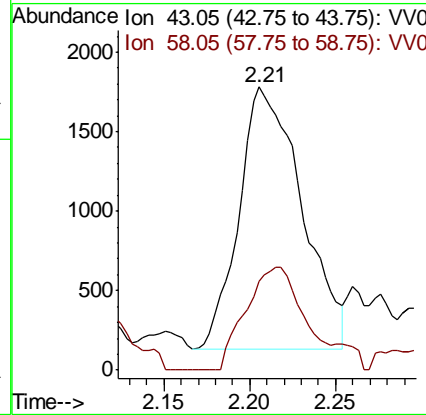
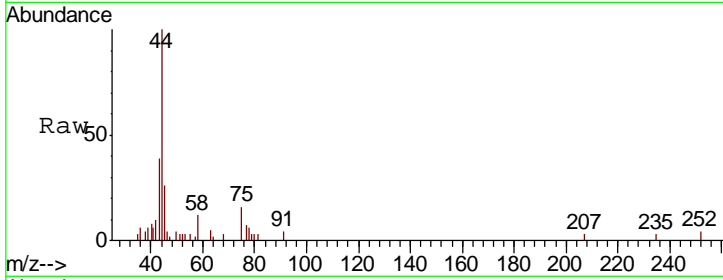




#13  
 Acetone  
 Concen: 1.98 ug/L  
 RT: 2.21 min Scan# 409  
 Delta R.T. 0.00 min  
 Lab File: VV007258.D  
 Acq: 29 Aug 2018 15:22

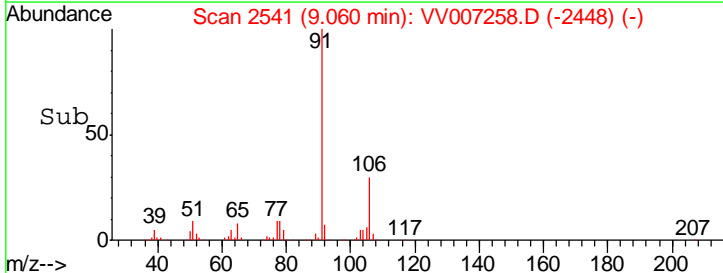
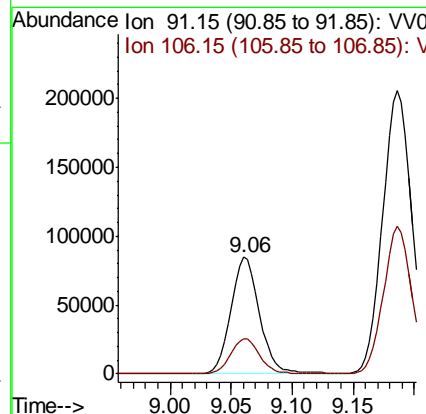
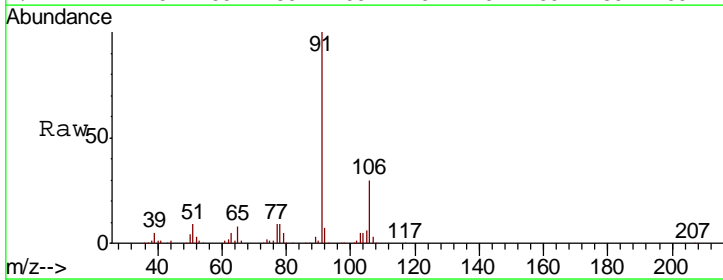
**Instrument :**  
 MSVOA\_V  
**ClientSampled :**  
 GAB91DL

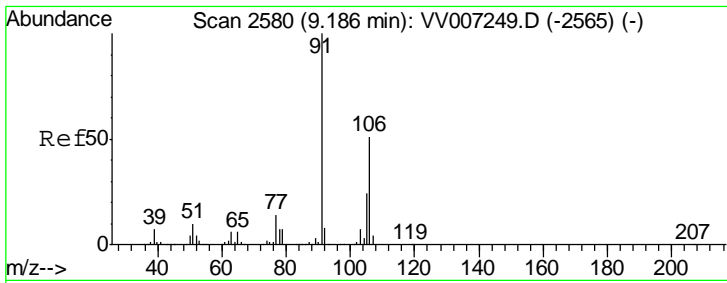
Tgt Ion	Resp	Lower	Upper
43	4185		
58	35.9	0.0	70.2



#52  
 Ethylbenzene  
 Concen: 1.97 ug/L  
 RT: 9.06 min Scan# 2541  
 Delta R.T. 0.00 min  
 Lab File: VV007258.D  
 Acq: 29 Aug 2018 15:22

Tgt Ion	Resp	Lower	Upper
91	140193		
106	30.4	22.3	41.3

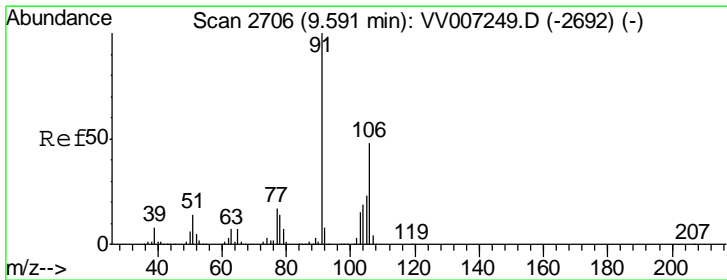
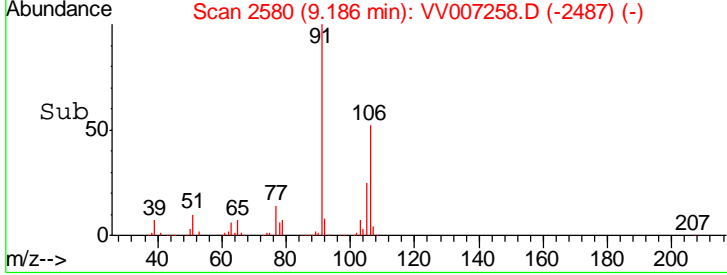
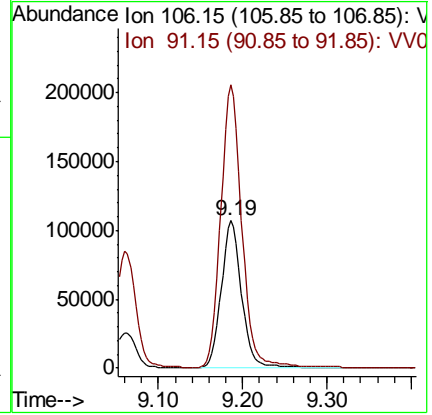
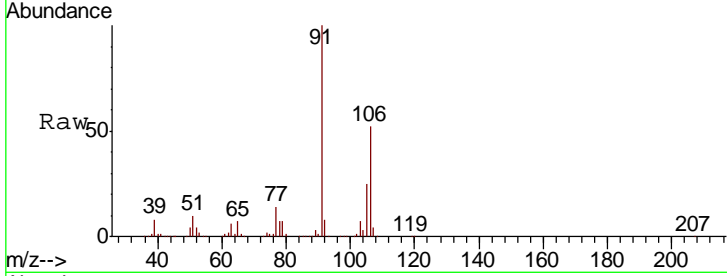




#53  
 m,p-xylene  
 Concen: 6.58 ug/L  
 RT: 9.19 min Scan# 2580  
 Delta R.T. 0.00 min  
 Lab File: VV007258.D  
 Acq: 29 Aug 2018 15:22

Instrument :  
 MSVOA\_V  
 ClientSampleID :  
 GAB91DL

Tgt Ion:106 Resp: 178327  
 Ion Ratio Lower Upper  
 106 100  
 91 191.9 138.4 257.0



#54  
 o-xylene  
 Concen: 3.60 ug/L  
 RT: 9.59 min Scan# 2707  
 Delta R.T. 0.00 min  
 Lab File: VV007258.D  
 Acq: 29 Aug 2018 15:22

Tgt Ion:106 Resp: 90693  
 Ion Ratio Lower Upper  
 106 100  
 91 210.8 146.9 272.7

