

Data File : VV012480.D
 Acq On : 31 Aug 2019 05:30
 Operator : SY/MD
 Sample : K4607-01
 Misc : 25mL/MSVOA_V/WATER
 ALS Vial : 41 Sample Multiplier: 1

Instrument :
 MSVOA_V
 ClientSampled :
 BFD58

Quant Time: Aug 31 05:53:54 2019
 Quant Method : Z:\VOASRV\HPCHEM1\MSVOA_V\METHOD\SOMVTR082919WMA.M
 Quant Title : TRACE VOA SOM01.0
 QLast Update : Sat Aug 31 05:14:34 2019
 Response via : Initial Calibration

Internal Standards	R.T.	QIon	Response	Conc	Units	Dev(Min)
1) 1,4-Difluorobenzene	5.66	114	141788	5.00	ug/L	0.00
28) Chlorobenzene-d5	8.89	117	143091	5.00	ug/L	0.00
60) 1,4-Dichlorobenzene-d4	11.29	152	55482	5.00	ug/L	0.00

System Monitoring Compounds

4) Vinyl Chloride-d3	1.32	65	42946	3.40	ug/L	0.00
Spiked Amount	5.000	Range	40 - 130	Recovery	=	68.00%
7) Chloroethane-d5	1.59	69	35001	3.83	ug/L	0.00
Spiked Amount	5.000	Range	65 - 130	Recovery	=	76.60%
11) 1,1-Dichloroethene-d2	2.13	63	54693	2.64	ug/L	0.00
Spiked Amount	5.000	Range	60 - 125	Recovery	=	52.80%#
20) 2-Butanone-d5	3.97	46	142032	55.14	ug/L	0.00
Spiked Amount	50.000	Range	40 - 130	Recovery	=	110.28%
24) Chloroform-d	4.40	84	87344	4.02	ug/L	0.00
Spiked Amount	5.000	Range	70 - 125	Recovery	=	80.40%
26) 1,2-Dichloroethane-d4	5.08	65	49413	4.68	ug/L	0.00
Spiked Amount	5.000	Range	70 - 130	Recovery	=	93.60%
32) Benzene-d6	5.10	84	161905	3.79	ug/L	0.00
Spiked Amount	5.000	Range	70 - 125	Recovery	=	75.80%
36) 1,2-Dichloropropane-d6	6.12	67	57150	4.21	ug/L	0.00
Spiked Amount	5.000	Range	60 - 140	Recovery	=	84.20%
41) Toluene-d8	7.36	98	128142	3.33	ug/L	0.00
Spiked Amount	5.000	Range	70 - 130	Recovery	=	66.60%#
43) trans-1,3-Dichloropropene-	7.67	79	18349	3.83	ug/L	0.00
Spiked Amount	5.000	Range	55 - 130	Recovery	=	76.60%
46) 2-Hexanone-d5	8.14	63	83983	44.58	ug/L	0.00
Spiked Amount	50.000	Range	45 - 130	Recovery	=	89.16%
57) 1,1,2,2-Tetrachloroethane-	10.26	84	45200	4.70	ug/L	0.00
Spiked Amount	5.000	Range	65 - 120	Recovery	=	94.00%
64) 1,2-Dichlorobenzene-d4	11.67	152	50671	4.69	ug/L	0.00
Spiked Amount	5.000	Range	80 - 120	Recovery	=	93.80%

Target Compounds

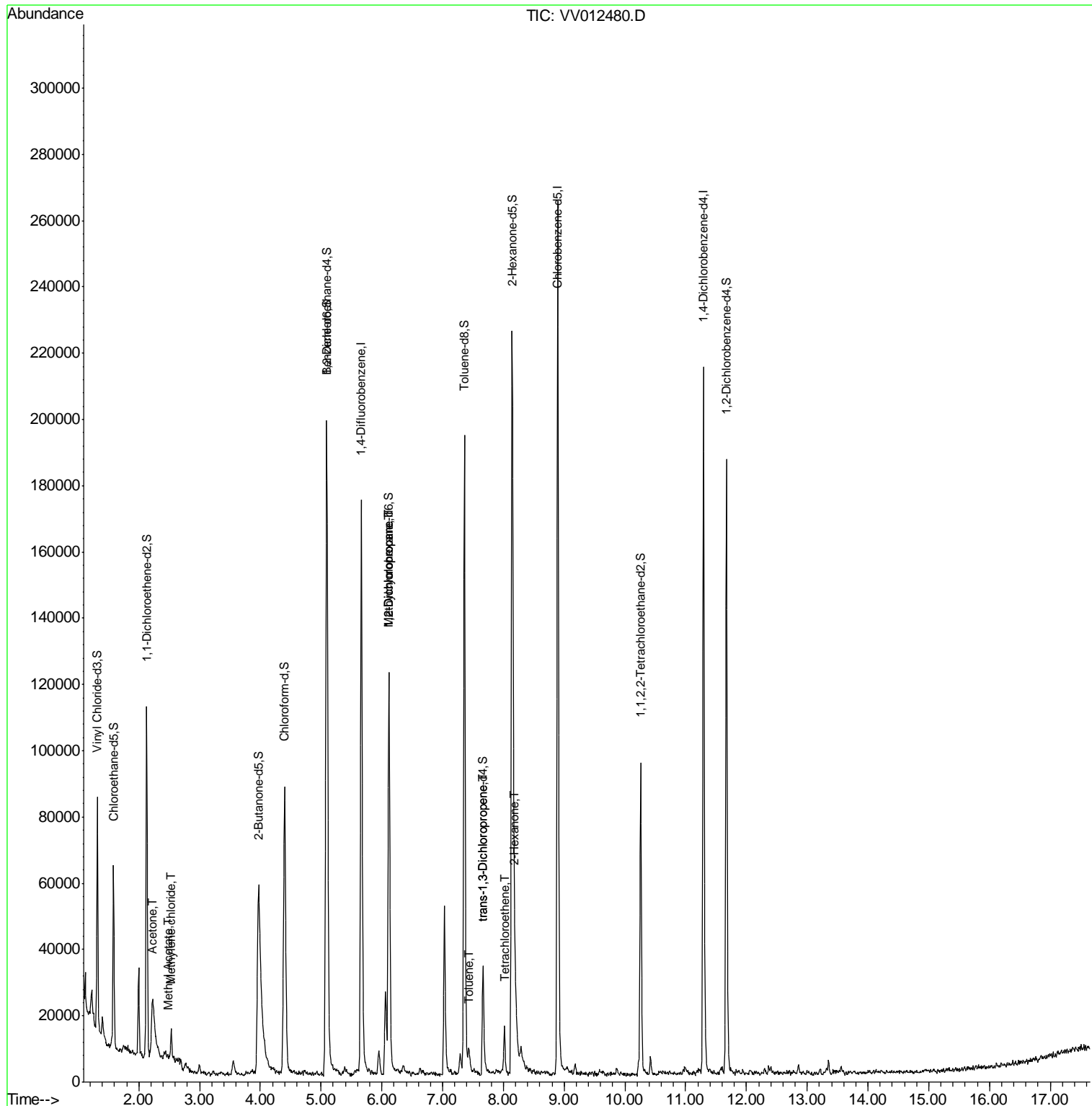
					Qvalue
13) Acetone	2.23	43	42531	22.599	ug/L 100
15) Methyl Acetate	2.47	43	1478	0.319	ug/L # 76
16) Methylene chloride	2.53	84	2896	0.236	ug/L 96
35) Methylcyclohexane	6.12	83	13651	0.594	ug/L # 15
37) 1,2-Dichloropropane	6.12	63	6634	0.429	ug/L # 89
42) Toluene	7.43	91	3758	0.062	ug/L 97
44) trans-1,3-Dichloropropene	7.66	75	906	0.058	ug/L # 70
47) Tetrachloroethene	8.02	164	3187	0.264	ug/L 86
48) 2-Hexanone	8.19	43	10195	1.710	ug/L # 65

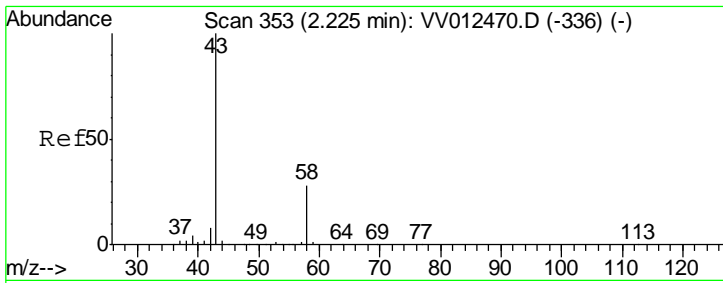
(#) = qualifier out of range (m) = manual integration (+) = signals summed

Data File : VV012480.D
Acq On : 31 Aug 2019 05:30
Operator : SY/MD
Sample : K4607-01
Misc : 25mL/MSVOA_V/WATER
ALS Vial : 41 Sample Multiplier: 1

Instrument :
MSVOA_V
ClientSampled :
BFD58

Quant Time: Aug 31 05:53:54 2019
Quant Method : Z:\VOASRV\HPCHEM1\MSVOA_V\METHOD\SOMVTR082919WMA.M
Quant Title : TRACE VOA SOM01.0
QLast Update : Sat Aug 31 05:14:34 2019
Response via : Initial Calibration

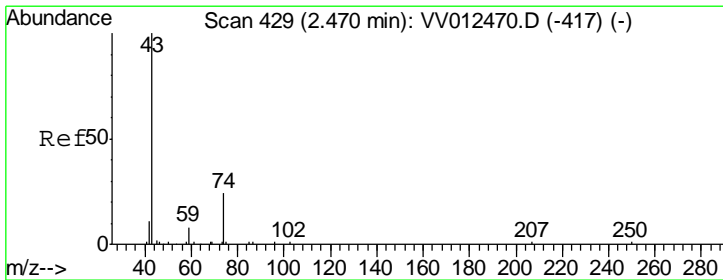
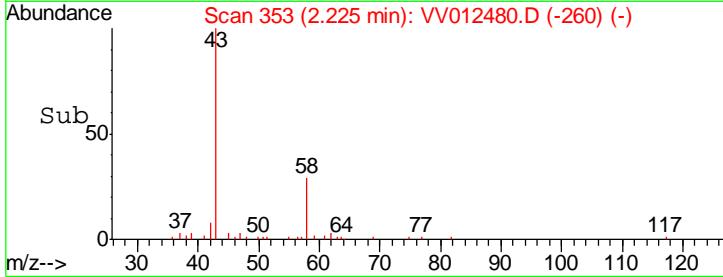
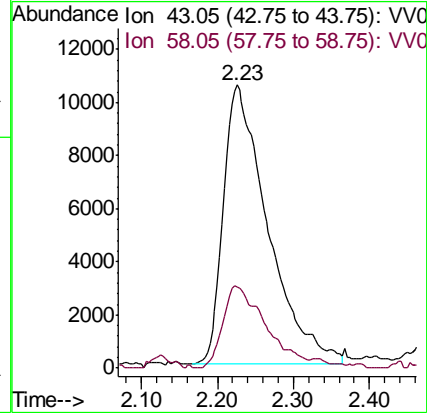
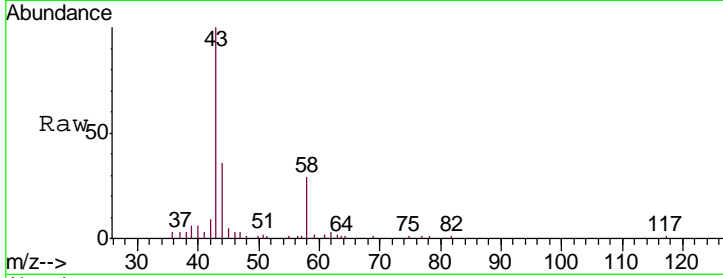




#13
 Acetone
 Concen: 22.599 ug/L
 RT: 2.23 min Scan# 353
 Delta R.T. 0.00 min
 Lab File: VV012480.D
 Acq: 31 Aug 2019 05:30

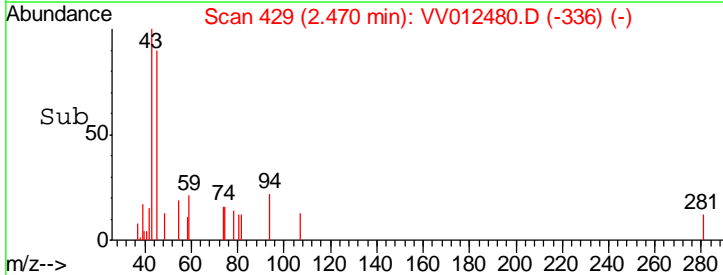
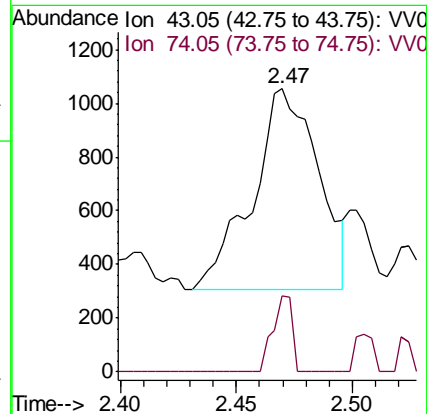
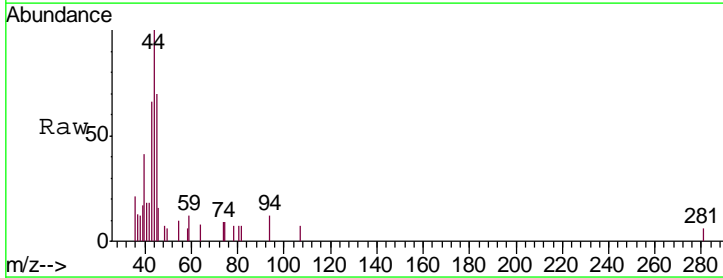
Instrument :
 MSVOA_V
 ClientSampleId :
 BFD58

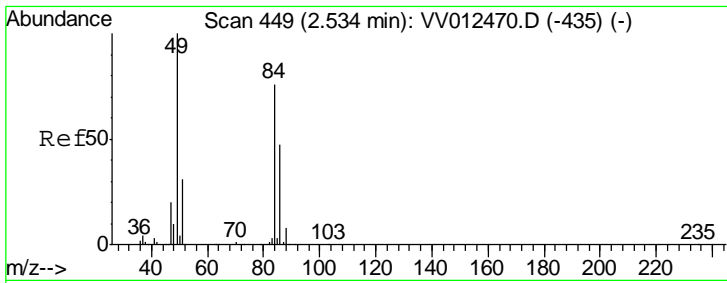
Tgt Ion	Resp	Lower	Upper
43	100		
58	28.6	0.0	56.8



#15
 Methyl Acetate
 Concen: 0.319 ug/L
 RT: 2.47 min Scan# 429
 Delta R.T. 0.00 min
 Lab File: VV012480.D
 Acq: 31 Aug 2019 05:30

Tgt Ion	Resp	Lower	Upper
43	100		
74	11.0	18.1	27.1#

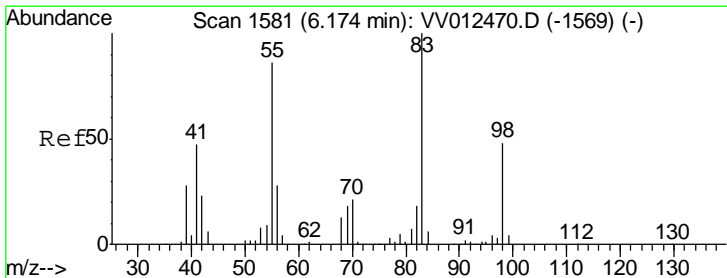
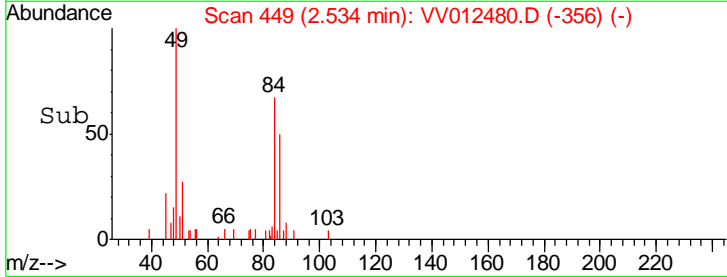
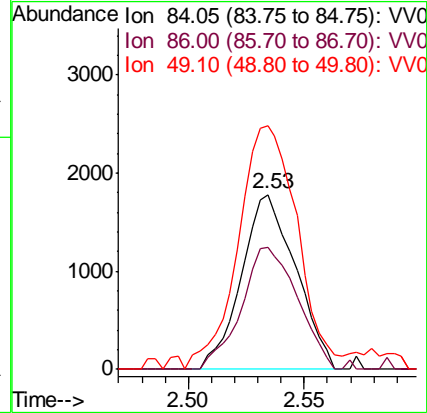
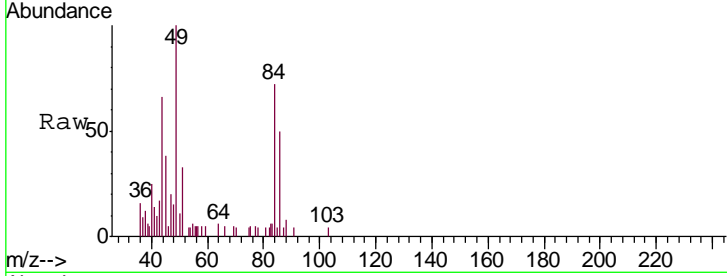




#16
 Methylene chloride
 Concen: 0.236 ug/L
 RT: 2.53 min Scan# 449
 Delta R.T. 0.00 min
 Lab File: VV012480.D
 Acq: 31 Aug 2019 05:30

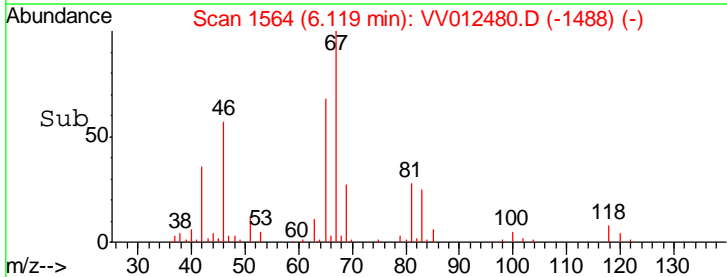
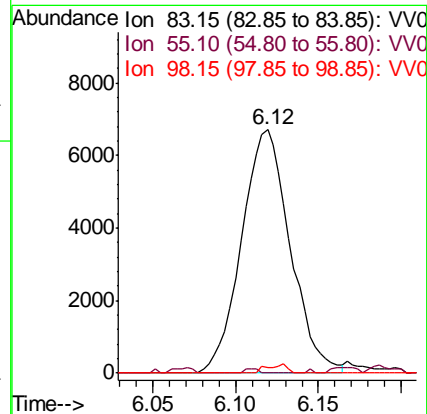
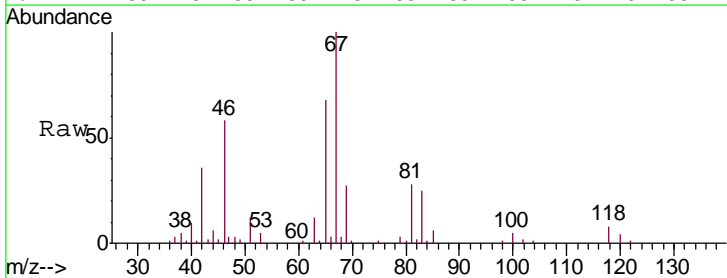
Instrument :
 MSVOA_V
 ClientSampled :
 BFD58

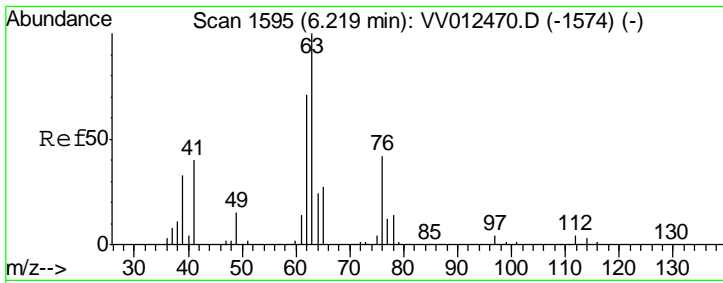
Tgt Ion	Resp	Lower	Upper
84	100		
86	70.1	45.2	84.0
49	139.3	95.1	176.7



#35
 Methylcyclohexane
 Concen: 0.594 ug/L
 RT: 6.12 min Scan# 1564
 Delta R.T. -0.05 min
 Lab File: VV012480.D
 Acq: 31 Aug 2019 05:30

Tgt Ion	Resp	Lower	Upper
83	100		
55	0.4	67.8	101.6#
98	0.0	39.2	58.8#

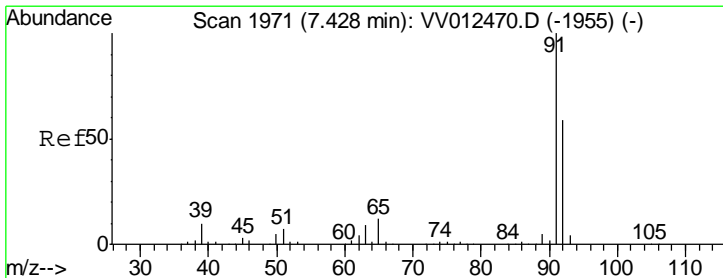
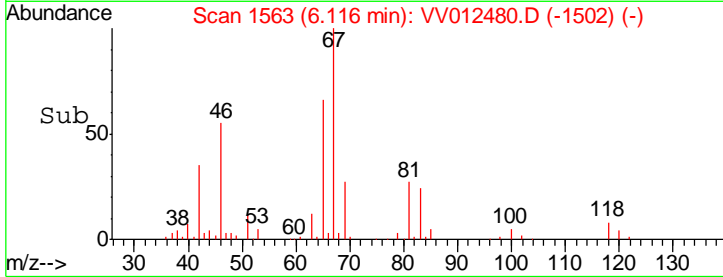
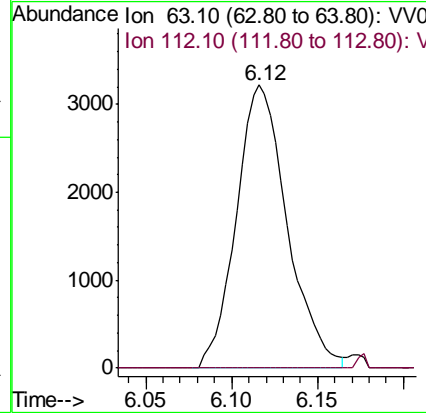
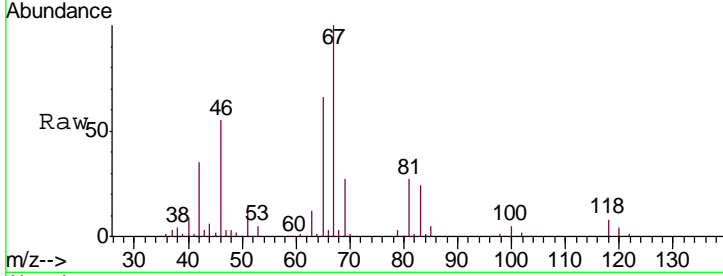




#37
 1,2-Dichloropropane
 Concen: 0.429 ug/L
 RT: 6.12 min Scan# 1563
 Delta R.T. -0.10 min
 Lab File: VV012480.D
 Acq: 31 Aug 2019 05:30

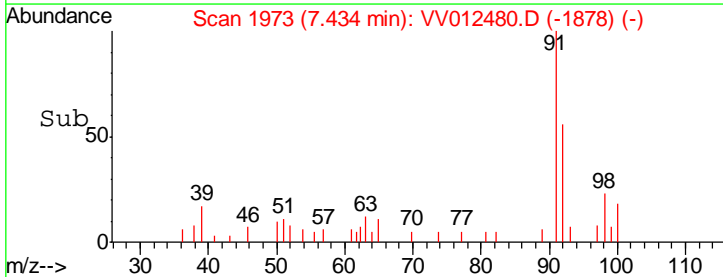
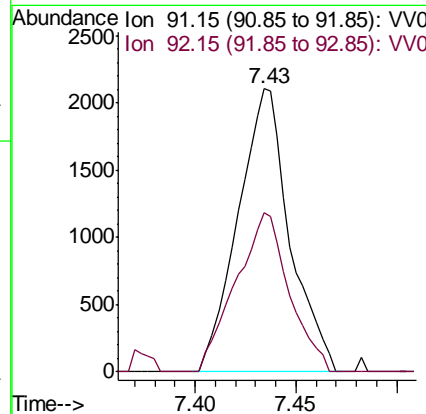
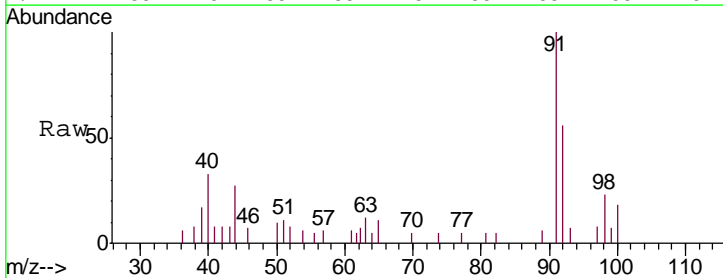
Instrument :
 MSVOA_V
 ClientSampled :
 BFD58

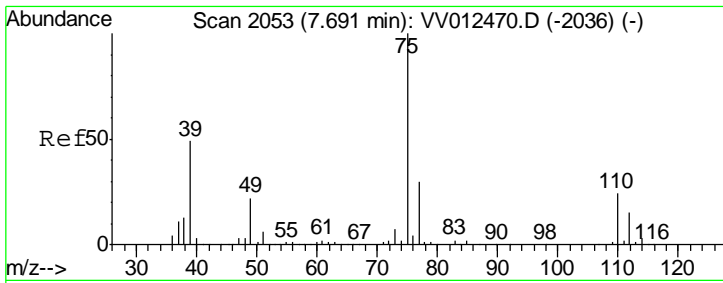
Tgt Ion: 63 Resp: 6634
 Ion Ratio Lower Upper
 63 100
 112 0.8 3.7 5.5#



#42
 Toluene
 Concen: 0.062 ug/L
 RT: 7.43 min Scan# 1973
 Delta R.T. 0.01 min
 Lab File: VV012480.D
 Acq: 31 Aug 2019 05:30

Tgt Ion: 91 Resp: 3758
 Ion Ratio Lower Upper
 91 100
 92 56.4 41.2 76.6

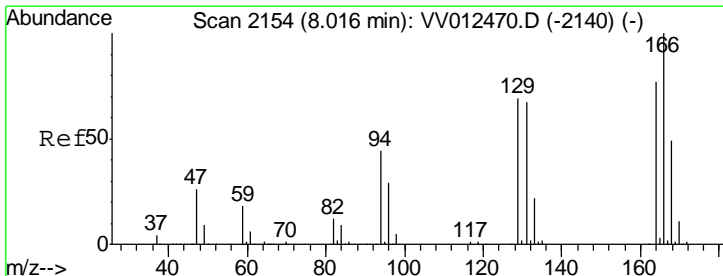
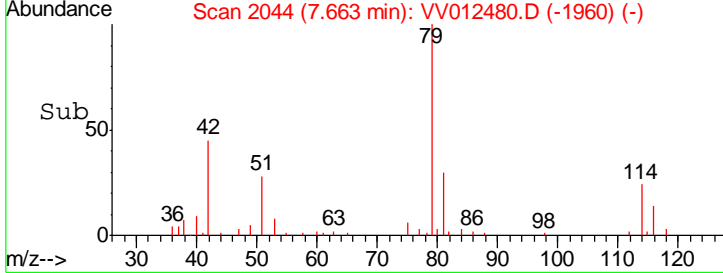
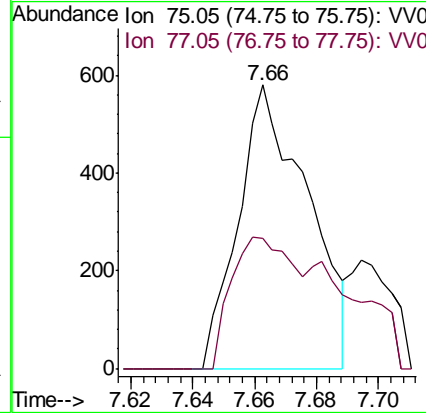
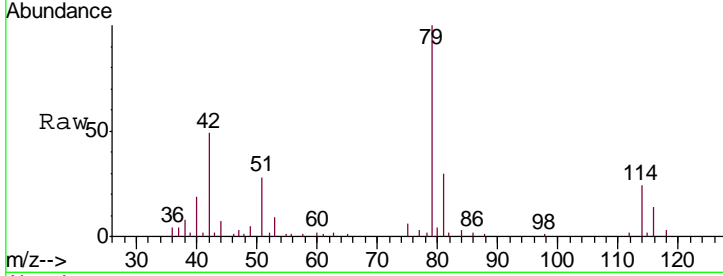




#44
 trans-1,3-Dichloropropene
 Concen: 0.058 ug/L
 RT: 7.66 min Scan# 2044
 Delta R.T. -0.03 min
 Lab File: VV012480.D
 Acq: 31 Aug 2019 05:30

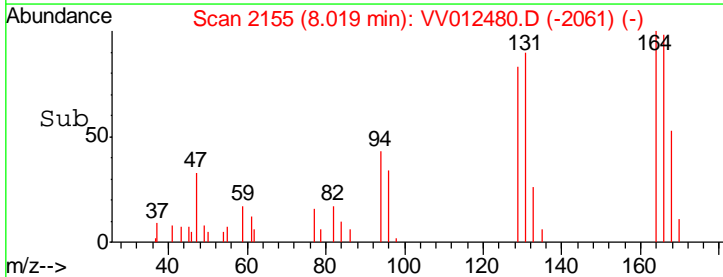
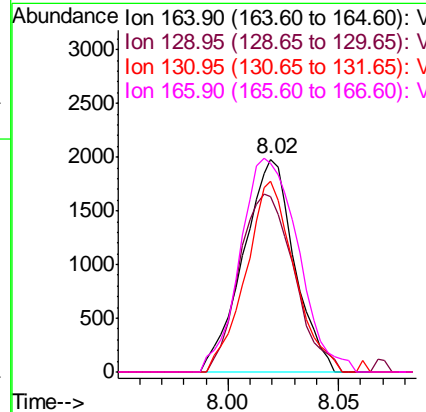
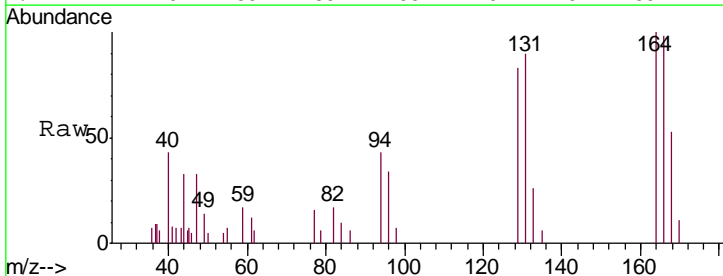
Instrument : MSVOA_V
 ClientSampled : BFD58

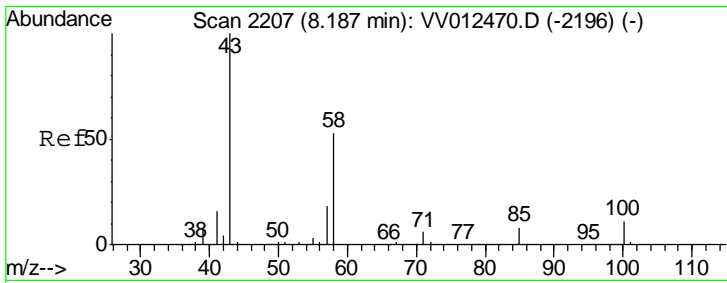
Tgt Ion: 75 Resp: 906
 Ion Ratio Lower Upper
 75 100
 77 45.7 20.6 38.4#



#47
 Tetrachloroethene
 Concen: 0.264 ug/L
 RT: 8.02 min Scan# 2155
 Delta R.T. 0.00 min
 Lab File: VV012480.D
 Acq: 31 Aug 2019 05:30

Tgt Ion: 164 Resp: 3187
 Ion Ratio Lower Upper
 164 100
 129 82.6 65.6 121.8
 131 89.5 63.3 117.5
 166 98.3 89.4 166.0

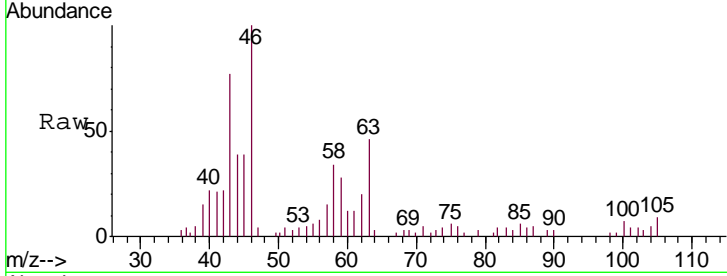




#48
 2-Hexanone
 Concen: 1.710 ug/L
 RT: 8.19 min Scan# 2209
 Delta R.T. 0.01 min
 Lab File: VV012480.D
 Acq: 31 Aug 2019 05:30

Instrument :
 MSVOA_V
 ClientSampleId :
 BFD58

Tgt Ion	Resp	Lower	Upper
43	10195		
58	25.7	43.6	65.4#
57	1.6	14.2	21.2#
100	8.2	8.9	13.3#



Abundance Ion 43.05 (42.75 to 43.75): VV0
 Ion 58.05 (57.75 to 58.75): VV0
 Ion 57.20 (56.90 to 57.90): VV0
 Ion 100.15 (99.85 to 100.85): VV0

