

Data Path : Z:\VOASRV\HPCHEM1\MSVOA_V\DATA\VV083019\
 Data File : VV012469.D
 Acq On : 30 Aug 2019 21:48
 Operator : SY/MD
 Sample : K4501-06
 Misc : 25mL/MSVOA_V/WATER
 ALS Vial : 28 Sample Multiplier: 1

Instrument :
 MSVOA_V
 ClientSampleId :
 GANM1

Integration Parameters: rteint.p
 Integrator: RTE
 Smoothing : ON Filtering: 5
 Sampling : 1 Min Area: 3 % of largest Peak
 Start Thrs: 0.1 Max Peaks: 100
 Stop Thrs : 0 Peak Location: TOP

If leading or trailing edge < 100 prefer < Baseline drop else tangent >
 Peak separation: 5

Method : Z:\VOASRV\HPCHEM1\MSVOA_V\METHOD\SOMVTR082919WMA.M
 Title : TRACE VOA SOM01.0

Signal : TIC

peak #	R.T. min	first scan	max scan	last scan	PK TY	peak height	corr. area	corr. % max.	% of total
1	3.949	874	889	918	rBV	95629	311343	1.21%	1.005%
2	4.399	1010	1029	1053	rBV3	130211	331968	1.29%	1.071%
3	5.097	1226	1246	1274	rBV3	282772	712431	2.76%	2.299%
4	5.662	1409	1422	1442	rBV	264115	526938	2.04%	1.701%
5	6.116	1548	1563	1582	rBV	170086	345563	1.34%	1.115%
6	7.360	1937	1950	1968	rBV	300935	532306	2.06%	1.718%
7	8.019	2134	2155	2181	rBV	15581825	25826582	100.00%	83.348%
8	8.135	2182	2191	2230	rVB	332195	723440	2.80%	2.335%
9	8.894	2412	2427	2447	rBV	410306	688460	2.67%	2.222%
10	11.292	3161	3173	3194	rBV	320436	537016	2.08%	1.733%
11	11.669	3279	3290	3310	rBV	266366	450229	1.74%	1.453%

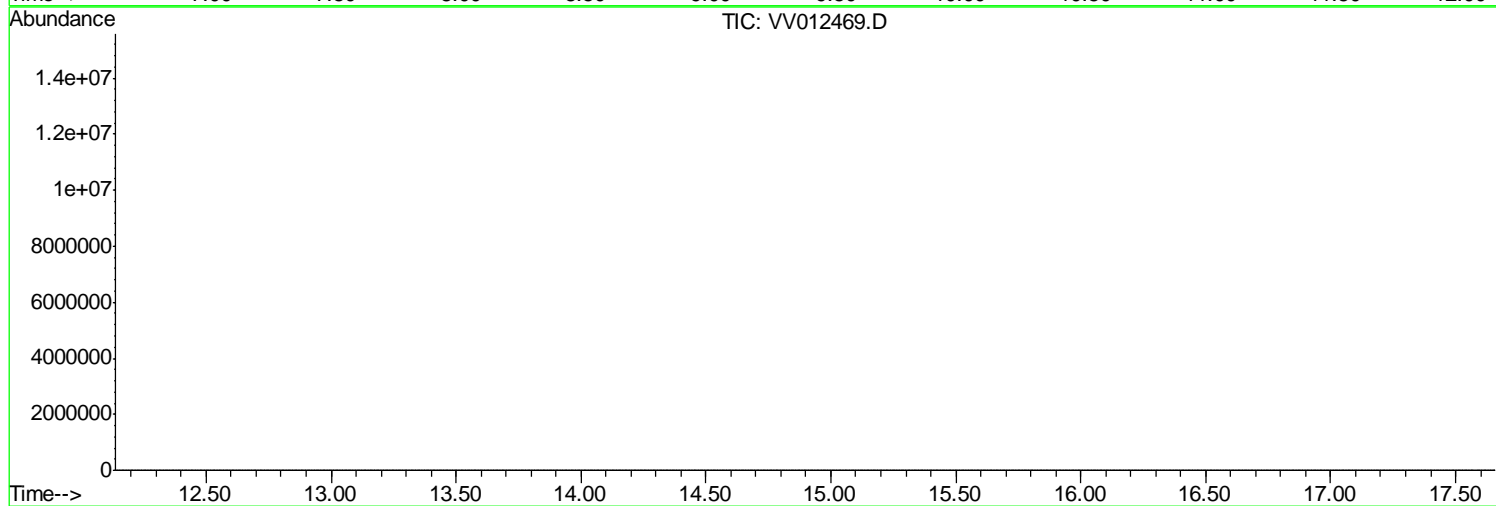
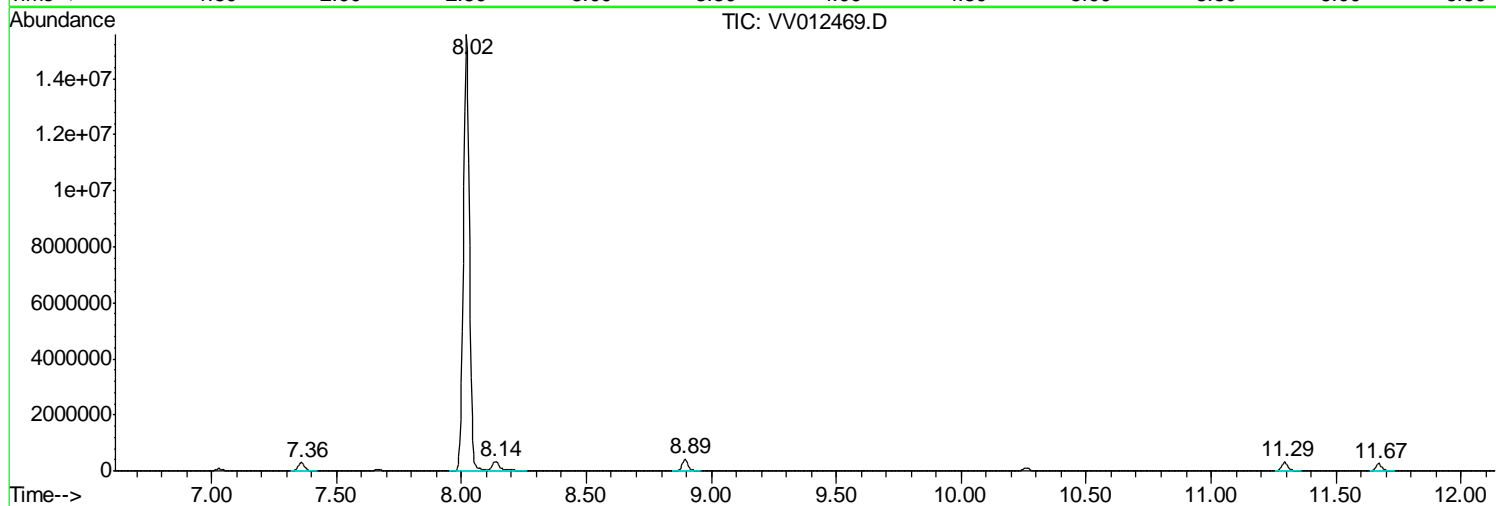
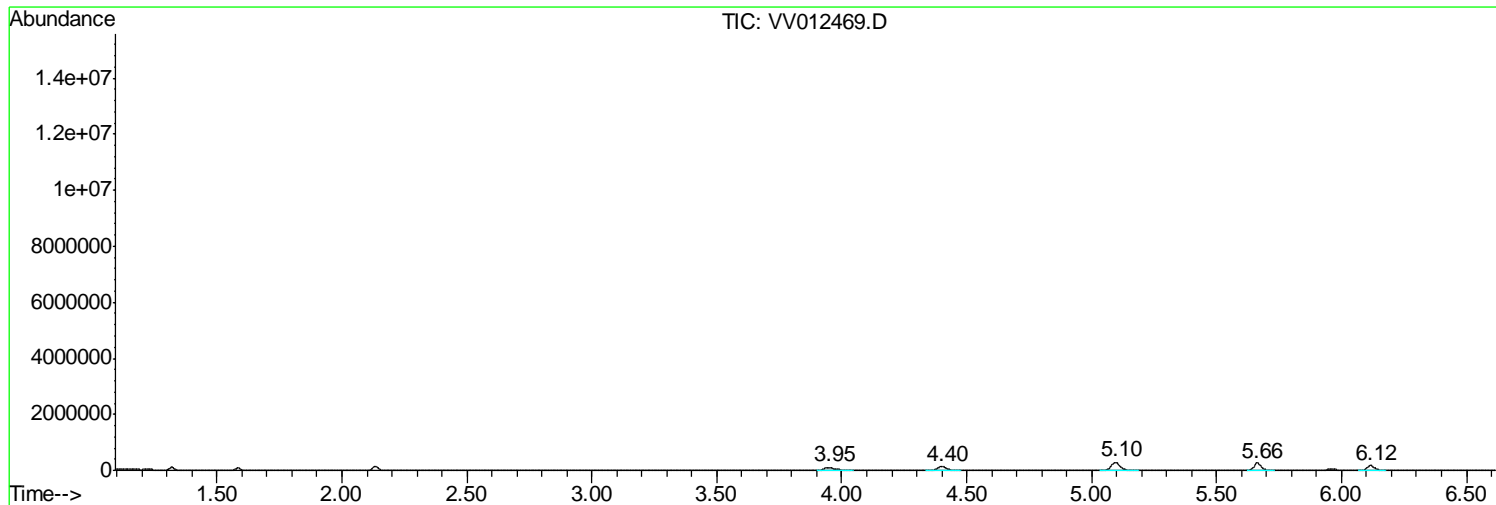
Sum of corrected areas: 30986276

Data Path : Z:\VOASRV\HPCHEM1\MSVOA_V\DATA\VV083019\
Data File : VV012469.D
Acq On : 30 Aug 2019 21:48
Operator : SY/MD
Sample : K4501-06
Misc : 25mL/MSVOA_V/WATER
ALS Vial : 28 Sample Multiplier: 1

Instrument :
MSVOA_V
ClientSampled :
GANM1

Quant Method : Z:\VOASRV\HPCHEM1\MSVOA_V\METHOD\SOMVTR082919WMA.M
Quant Title : TRACE VOA SOM01.0

TIC Library : C:\DATABASE\NIST11.L
TIC Integration Parameters: LSCINT.P



Data Path : Z:\VOASRV\HPCHEM1\MSVOA_V\DATA\VV083019\
Data File : VV012469.D
Acq On : 30 Aug 2019 21:48
Operator : SY/MD
Sample : K4501-06
Misc : 25mL/MSVOA_V/WATER
ALS Vial : 28 Sample Multiplier: 1

Instrument :
MSVOA_V
ClientSampled :
GANM1

Quant Method : Z:\VOASRV\HPCHEM1\MSVOA_V\METHOD\SOMVTR082919WMA.M
Quant Title : TRACE VOA SOM01.0

TIC Library : C:\DATABASE\NIST11.L
TIC Integration Parameters: LSCINT.P

No Library Search Compounds Detected

Data Path : Z:\VOASRV\HPCHEM1\MSVOA_V\DATA\VV083019\
Data File : VV012469.D
Acq On : 30 Aug 2019 21:48
Operator : SY/MD
Sample : K4501-06
Misc : 25mL/MSVOA_V/WATER
ALS Vial : 28 Sample Multiplier: 1

Instrument :
MSVOA_V
ClientSampleId :
GANM1

Quant Method : Z:\VOASRV\HPCHEM1\MSVOA_V\METHOD\SOMVTR082919WMA.M
Quant Title : TRACE VOA SOM01.0

TIC Library : C:\DATABASE\NIST11.L
TIC Integration Parameters: LSCINT.P

TIC Top Hit name	RT	EstConc	Units	Response	--Internal Standard--			
					#	RT	Resp	Conc
