

Data Path : Z:\voasrv\HPCHEM1\MSVOA\_V\Data\VV083021\  
 Data File : VV022014.D  
 Acq On : 30 Aug 2021 19:28  
 Operator : SY/MD  
 Sample : M3566-09  
 Misc : 5.0mL/MSVOA\_V/WATER  
 ALS Vial : 26 Sample Multiplier: 1

Instrument :  
 MSVOA\_V  
 ClientSampleId :  
 DBKH5

Integration Parameters: LSCINT.P

Integrator: RTE  
 Smoothing : OFF  
 Sampling : 1  
 Start Thrs : 0.2  
 Stop Thrs : 0

Filtering: 5  
 Min Area: 0 % of largest Peak  
 Max Peaks: 100  
 Peak Location: TOP

If leading or trailing edge < 100 prefer < Baseline drop else tangent >  
 Peak separation: 5

Method : Z:\voasrv\HPCHEM1\MSVOA\_V\Method\SFAMVLM082721WMA.M  
 Title : VOC Analysis

Signal : TIC: VV022014.D\data.ms

peak #	R.T. min	first scan	max scan	last scan	PK TY	peak height	corr. area	corr. % max.	% of total
1	1.108	15	21	34	rBV	102463	96360	7.95%	0.986%
2	1.304	74	82	90	rBV2	192270	209096	17.26%	2.139%
3	1.564	158	163	174	rVB	130194	143694	11.86%	1.470%
4	2.105	323	331	345	rVB	245308	364261	30.07%	3.726%
5	2.294	382	390	402	rVB3	3542	6005	0.50%	0.061%
6	2.867	563	568	572	rBV2	511	468	0.04%	0.005%
7	2.886	572	574	577	rBV2	352	242	0.02%	0.002%
8	2.957	585	596	610	rBV7	2952	6572	0.54%	0.067%
9	3.043	614	623	630	rVV6	2467	4920	0.41%	0.050%
10	3.082	633	635	638	rVV	532	282	0.02%	0.003%
11	3.143	651	654	658	rBV2	635	463	0.04%	0.005%
12	3.175	662	664	667	rVB2	430	212	0.02%	0.002%
13	3.291	698	700	705	rVB3	640	530	0.04%	0.005%
14	3.404	730	735	739	rVB3	435	326	0.03%	0.003%
15	3.632	804	806	808	rBV	443	242	0.02%	0.002%
16	3.770	844	849	852	rVB3	478	327	0.03%	0.003%
17	3.789	852	855	859	rBV	389	266	0.02%	0.003%
18	3.876	872	882	917	rBV	102828	277987	22.95%	2.843%
19	4.352	1014	1030	1058	rBV	189441	474546	39.17%	4.854%
20	4.574	1096	1099	1100	rBV2	554	270	0.02%	0.003%
21	4.625	1107	1115	1117	rBV3	722	849	0.07%	0.009%
22	4.670	1127	1129	1131	rBV3	912	595	0.05%	0.006%
23	4.738	1146	1150	1151	rBV	424	271	0.02%	0.003%
24	4.905	1200	1202	1204	rVB2	610	247	0.02%	0.003%
25	4.941	1211	1213	1220	rVB3	497	353	0.03%	0.004%
26	5.050	1230	1247	1272	rBV2	474587	1211391	100.00%	12.390%
27	5.278	1316	1318	1321	rVB2	567	257	0.02%	0.003%
28	5.294	1321	1323	1326	rBV2	622	322	0.03%	0.003%
29	5.359	1342	1343	1346	rBV3	433	267	0.02%	0.003%
30	5.526	1393	1395	1397	rBV	429	257	0.02%	0.003%
31	5.539	1397	1399	1402	rBV2	646	470	0.04%	0.005%
32	5.571	1407	1409	1412	rBV	505	316	0.03%	0.003%
33	5.619	1412	1424	1452	rBV	400917	808463	66.74%	8.269%
34	5.815	1483	1485	1488	rVB	657	317	0.03%	0.003%
35	6.072	1551	1565	1591	rBV	266745	548095	45.25%	5.606%
36	6.333	1642	1646	1650	rBV2	406	407	0.03%	0.004%

Data Path : Z:\voasrv\HPCHEM1\MSVOA\_V\Data\VV083021\  
 Data File : VV022014.D  
 Acq On : 30 Aug 2021 19:28  
 Operator : SY/MD  
 Sample : M3566-09  
 Misc : 5.0mL/MSVOA\_V/WATER  
 ALS Vial : 26 Sample Multiplier: 1

Instrument :  
 MSVOA\_V  
 ClientSampleId :  
 DBKH5

Integration Parameters: LSCINT.P

Integrator: RTE  
 Smoothing : OFF Filtering: 5  
 Sampling : 1 Min Area: 0 % of largest Peak  
 Start Thrs: 0.2 Max Peaks: 100  
 Stop Thrs : 0 Peak Location: TOP

If leading or trailing edge < 100 prefer < Baseline drop else tangent >  
 Peak separation: 5

Method : Z:\voasrv\HPCHEM1\MSVOA\_V\Method\SFAMVLM082721WMA.M  
 Title : VOC Analysis

37	6.397	1662	1666	1667	rBV	363	203	0.02%	0.002%
38	6.407	1667	1669	1672	rVV2	553	305	0.03%	0.003%
39	6.429	1674	1676	1681	rVB2	440	219	0.02%	0.002%
40	6.522	1702	1705	1706	rBV	386	201	0.02%	0.002%
41	6.542	1707	1711	1713	rBV2	613	487	0.04%	0.005%
42	6.587	1723	1725	1728	rVB2	585	306	0.03%	0.003%
43	6.609	1728	1732	1734	rBV4	511	397	0.03%	0.004%
44	6.638	1735	1741	1742	rBV3	636	545	0.04%	0.006%
45	6.696	1756	1759	1764	rVB3	629	461	0.04%	0.005%
46	6.728	1764	1769	1771	rBV2	562	468	0.04%	0.005%
47	6.741	1771	1773	1775	rVB2	474	207	0.02%	0.002%
48	6.812	1790	1795	1797	rBV	354	207	0.02%	0.002%
49	6.989	1839	1850	1875	rBV	142486	258305	21.32%	2.642%
50	7.317	1941	1952	1970	rBV	576476	1000481	82.59%	10.233%
51	7.625	2038	2048	2064	rBV	93011	165159	13.63%	1.689%
52	7.821	2105	2109	2112	rBV4	415	386	0.03%	0.004%
53	7.844	2115	2116	2120	rVB2	584	293	0.02%	0.003%
54	7.944	2140	2147	2159	rVB4	2646	4410	0.36%	0.045%
55	8.088	2182	2192	2230	rBV	319999	587356	48.49%	6.007%
56	8.468	2307	2310	2314	rVV3	541	348	0.03%	0.004%
57	8.583	2343	2346	2351	rVB3	467	371	0.03%	0.004%
58	8.612	2351	2355	2356	rBV2	453	256	0.02%	0.003%
59	8.651	2363	2367	2369	rBV	401	292	0.02%	0.003%
60	8.686	2375	2378	2381	rBV2	421	253	0.02%	0.003%
61	8.780	2404	2407	2411	rBV2	266	226	0.02%	0.002%
62	8.854	2419	2430	2460	rBV	613160	990353	81.75%	10.129%
63	9.085	2500	2502	2506	rBV	341	261	0.02%	0.003%
64	9.111	2506	2510	2514	rVV3	661	572	0.05%	0.006%
65	9.272	2558	2560	2568	rVB4	404	396	0.03%	0.004%
66	9.307	2568	2571	2574	rVB2	409	255	0.02%	0.003%
67	9.329	2574	2578	2584	rBV2	487	432	0.04%	0.004%
68	9.561	2644	2650	2652	rBV4	614	551	0.05%	0.006%
69	9.593	2657	2660	2664	rBV2	384	266	0.02%	0.003%
70	9.873	2744	2747	2750	rBV2	262	216	0.02%	0.002%
71	9.934	2762	2766	2768	rBV3	358	276	0.02%	0.003%
72	9.966	2772	2776	2779	rVB	373	235	0.02%	0.002%
73	10.130	2820	2827	2839	rVB6	2282	3681	0.30%	0.038%
74	10.220	2842	2855	2875	rBV	395861	624895	51.58%	6.391%
75	10.352	2894	2896	2898	rBV2	558	266	0.02%	0.003%
76	10.387	2898	2907	2916	rVB6	3576	6355	0.52%	0.065%

Data Path : Z:\voasrv\HPCHEM1\MSVOA\_V\Data\VW083021\  
 Data File : VW022014.D  
 Acq On : 30 Aug 2021 19:28  
 Operator : SY/MD  
 Sample : M3566-09  
 Misc : 5.0mL/MSVOA\_V/WATER  
 ALS Vial : 26 Sample Multiplier: 1

Instrument :  
 MSVOA\_V  
 ClientSampleId :  
 DBKH5

Integration Parameters: LSCINT.P

Integrator: RTE  
 Smoothing : OFF Filtering: 5  
 Sampling : 1 Min Area: 0 % of largest Peak  
 Start Thrs: 0.2 Max Peaks: 100  
 Stop Thrs : 0 Peak Location: TOP

If leading or trailing edge < 100 prefer < Baseline drop else tangent >  
 Peak separation: 5

Method : Z:\voasrv\HPCHEM1\MSVOA\_V\Method\SFAMVLM082721WMA.M  
 Title : VOC Analysis

77	10.616	2975	2978	2979	rBV2	396	220	0.02%	0.002%
78	10.760	3018	3023	3024	rBV3	586	383	0.03%	0.004%
79	10.876	3055	3059	3062	rBV3	570	430	0.04%	0.004%
80	10.921	3064	3073	3082	rVB6	2088	3726	0.31%	0.038%
81	11.027	3102	3106	3108	rBV3	640	480	0.04%	0.005%
82	11.149	3138	3144	3155	rBV6	1210	1957	0.16%	0.020%
83	11.252	3164	3176	3194	rBV	642229	1005075	82.97%	10.280%
84	11.394	3214	3220	3226	rBV7	929	1227	0.10%	0.013%
85	11.545	3257	3267	3272	rBV6	4647	7138	0.59%	0.073%
86	11.628	3281	3293	3309	rBV	589825	941230	77.70%	9.627%
87	11.786	3339	3342	3350	rBV4	763	698	0.06%	0.007%
88	11.853	3358	3363	3367	rBV5	480	506	0.04%	0.005%
89	11.966	3396	3398	3403	rVB2	437	256	0.02%	0.003%
90	12.059	3425	3427	3431	rVB3	526	333	0.03%	0.003%
91	12.091	3431	3437	3438	rBV2	466	355	0.03%	0.004%
92	12.239	3480	3483	3484	rBV	459	233	0.02%	0.002%
93	12.304	3501	3503	3506	rBV2	336	210	0.02%	0.002%
94	12.609	3596	3598	3603	rVB4	706	315	0.03%	0.003%
95	12.654	3610	3612	3615	rBV	352	226	0.02%	0.002%
96	13.130	3758	3760	3767	rBV3	373	284	0.02%	0.003%
97	13.226	3788	3790	3795	rBV2	316	222	0.02%	0.002%
98	13.789	3962	3965	3966	rBV2	418	270	0.02%	0.003%
99	14.082	4052	4056	4057	rBV2	350	216	0.02%	0.002%
100	14.107	4062	4064	4068	rVV2	453	245	0.02%	0.003%

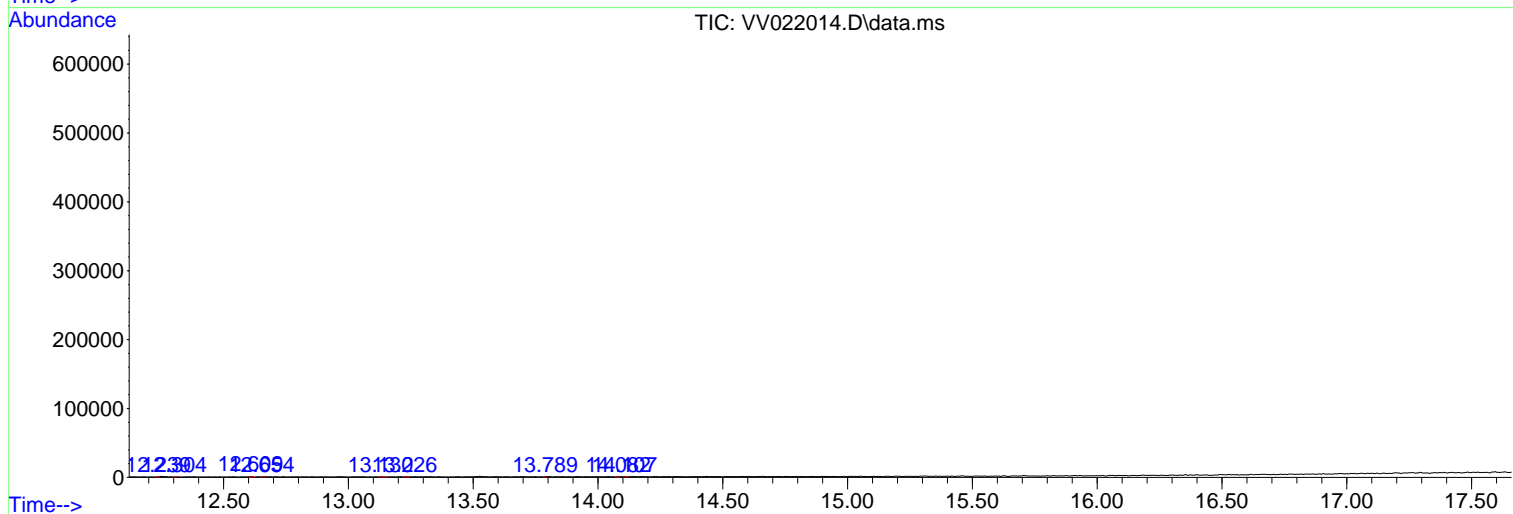
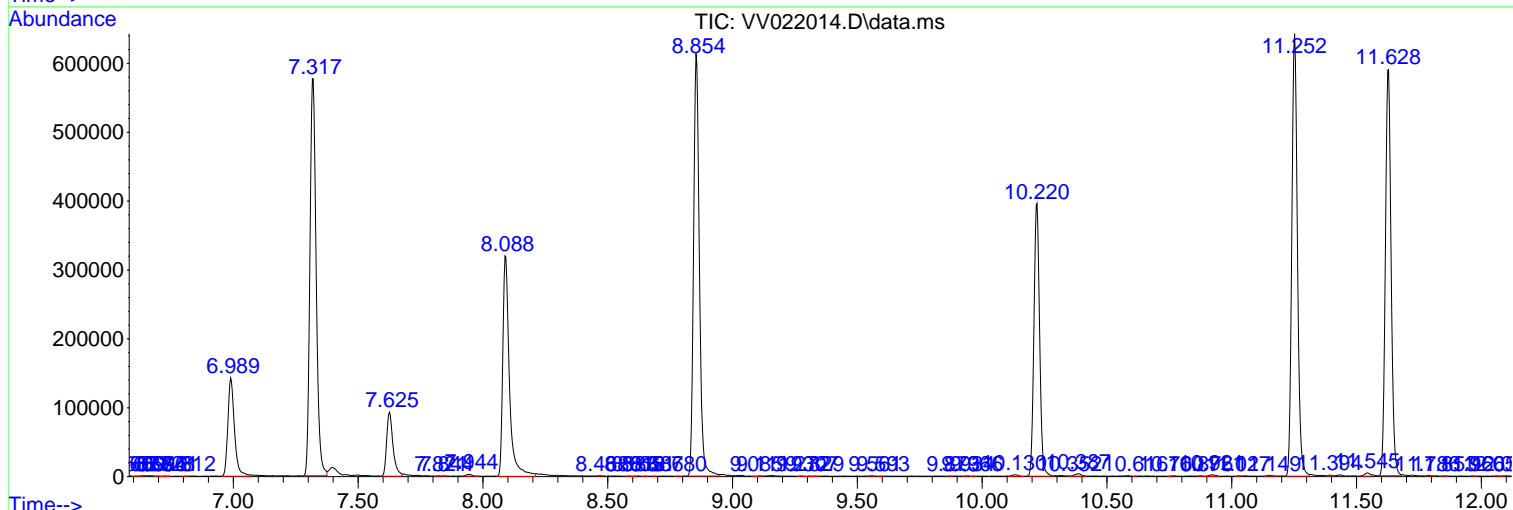
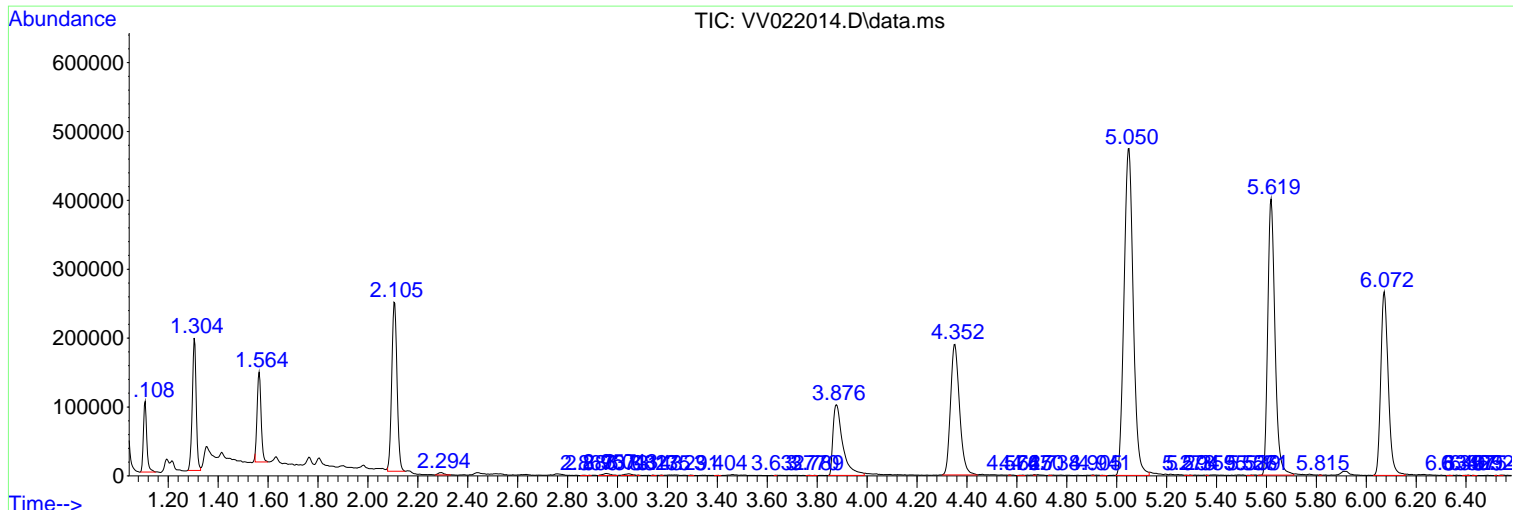
Sum of corrected areas: 9777333

Data Path : Z:\voasrv\HPCHEM1\MSVOA\_V\Data\VV083021\  
 Data File : VV022014.D  
 Acq On : 30 Aug 2021 19:28  
 Operator : SY/MD  
 Sample : M3566-09  
 Misc : 5.0mL/MSVOA\_V/WATER  
 ALS Vial : 26 Sample Multiplier: 1

Instrument :  
 MSVOA\_V  
 ClientSampled :  
 DBKH5

Quant Method : Z:\voasrv\HPCHEM1\MSVOA\_V\Method\SFAMVLM082721WMA.M  
 Quant Title : VOC Analysis

TIC Library : C:\Database\NIST20.L  
 TIC Integration Parameters: LSCINT.P



Data Path : Z:\voasrv\HPCHEM1\MSVOA\_V\Data\VV083021\  
 Data File : VV022014.D  
 Acq On : 30 Aug 2021 19:28  
 Operator : SY/MD  
 Sample : M3566-09  
 Misc : 5.0mL/MSVOA\_V/WATER  
 ALS Vial : 26 Sample Multiplier: 1

Instrument :  
 MSVOA\_V  
 ClientSampleId :  
 DBKH5

Quant Method : Z:\voasrv\HPCHEM1\MSVOA\_V\Method\SFAMVLM082721WMA.M  
 Quant Title : VOC Analysis

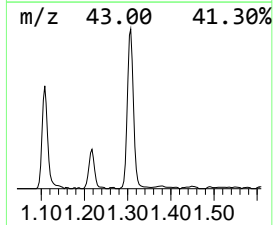
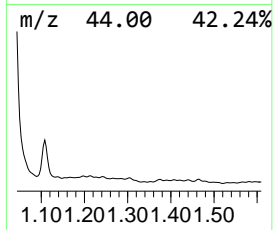
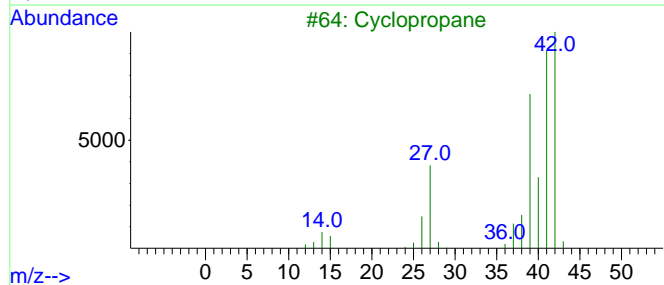
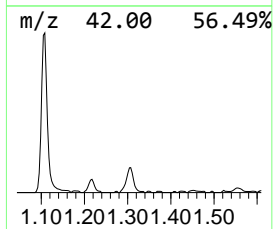
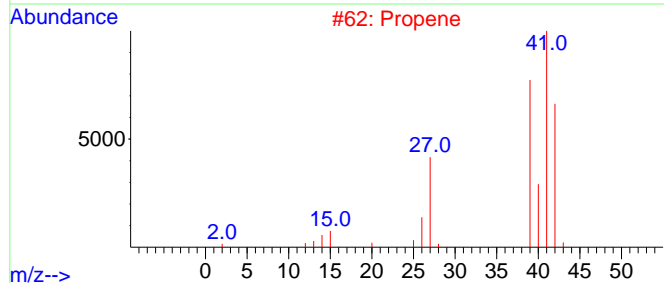
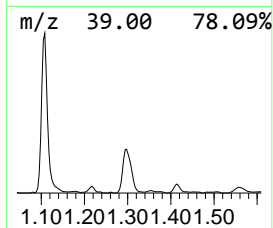
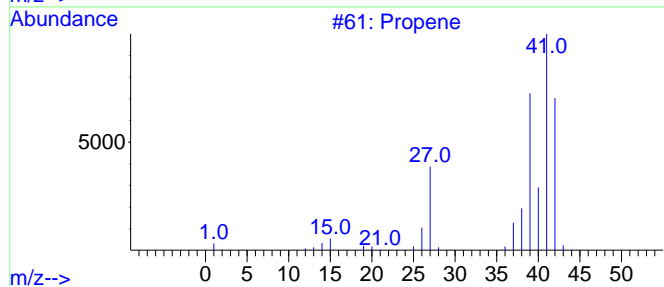
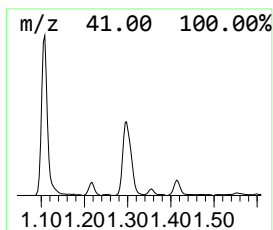
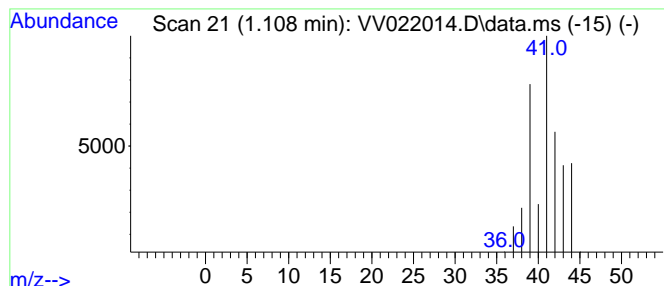
TIC Library : C:\Database\NIST20.L  
 TIC Integration Parameters: LSCINT.P

\*\*\*\*\*  
 Peak Number 1 (DEL) Alkane: Straight-Chai... Concentration Rank 2

R.T.	EstConc	Area	Relative to ISTD	R.T.
1.108	5.96 ug/L	96360	1,4-Difluorobenzene	5.619

Hit#	of 5	Tentative ID	MW	MolForm	CAS#	Qual
1		Propene	42	C3H6	000115-07-1	86
2		Propene	42	C3H6	000115-07-1	42
3		Cyclopropane	42	C3H6	000075-19-4	9
4		Cyclopropene	40	C3H4	002781-85-3	9
5		Cyclopropane	42	C3H6	000075-19-4	7



Data Path : Z:\voasrv\HPCHEM1\MSVOA\_V\Data\VV083021\  
Data File : VV022014.D  
Acq On : 30 Aug 2021 19:28  
Operator : SY/MD  
Sample : M3566-09  
Misc : 5.0mL/MSVOA\_V/WATER  
ALS Vial : 26 Sample Multiplier: 1

Instrument :  
MSVOA\_V  
ClientSampled :  
DBKH5

Quant Method : Z:\voasrv\HPCHEM1\MSVOA\_V\Method\SFAMVLM082721WMA.M  
Quant Title : VOC Analysis

TIC Library : C:\Database\NIST20.L  
TIC Integration Parameters: LSCINT.P

TIC Top Hit name	RT	EstConc	Units	Response	--Internal Standard--			
					#	RT	Resp	Conc
(DEL) Alkane: S...	1.108	6.0	ug/L	96360	1	5.619	808463	50.0