

Data Path : Z:\voasrv\HPCHEM1\MSVOA\_V\Data\VW083121\  
 Data File : VW022053.D  
 Acq On : 31 Aug 2021 20:10  
 Operator : SY/MD  
 Sample : M3579-06ME  
 Misc : 6.74g/5.0mL/100uL/5.0mL/MSVOA\_V/MEOH  
 ALS Vial : 28 Sample Multiplier: 1

Instrument :  
 MSVOA\_V  
 Client Sampled :  
 GB6A8ME

Manual Integrations  
 APPROVED

MMDadoda  
 9/1/2021 12:32:29 PM

Quant Time: Sep 01 02:48:34 2021  
 Quant Method : Z:\voasrv\HPCHEM1\MSVOA\_V\Method\SFAMVLM082721WMA.M  
 Quant Title : VOC Analysis  
 QLast Update : Wed Sep 01 02:41:24 2021  
 Response via : Initial Calibration

Compound	R.T.	QIon	Response	Conc	Units	Dev(Min)
-----						
Internal Standards						
1) 1,4-Difluorobenzene	5.613	114	363915	50.000	ug/L	0.00
28) Chlorobenzene-d5	8.857	117	358593	50.000	ug/L	0.00
58) 1,4-Dichlorobenzene-d4	11.252	152	194933	50.000	ug/L	0.00
System Monitoring Compounds						
4) Vinyl Chloride-d3	1.301	65	65616	26.036	ug/L	0.00
Spiked Amount	50.000	Range 60 - 135	Recovery =	52.080%#		
7) Chloroethane-d5	1.529	69	19797	10.059	ug/L	-0.03
Spiked Amount	50.000	Range 70 - 130	Recovery =	20.120%#		
11) 1,1-Dichloroethene-d2	2.073	63	87512	20.997	ug/L	-0.03
Spiked Amount	50.000	Range 60 - 125	Recovery =	42.000%#		
21) 2-Butanone-d5	3.889	46	180630m	104.509	ug/L	0.02
Spiked Amount	100.000	Range 40 - 130	Recovery =	104.510%		
24) Chloroform-d	4.346	84	162267	35.312	ug/L	0.00
Spiked Amount	50.000	Range 70 - 125	Recovery =	70.620%		
26) 1,2-Dichloroethane-d4	5.027	65	109548	40.473	ug/L	0.00
Spiked Amount	50.000	Range 70 - 125	Recovery =	80.940%		
32) Benzene-d6	5.044	84	321640	33.069	ug/L	0.00
Spiked Amount	50.000	Range 70 - 125	Recovery =	66.140%#		
36) 1,2-Dichloropropane-d6	6.069	67	112054	36.634	ug/L	0.00
Spiked Amount	50.000	Range 70 - 120	Recovery =	73.260%		
41) Toluene-d8	7.317	98	282853	30.807	ug/L	0.00
Spiked Amount	50.000	Range 80 - 120	Recovery =	61.620%#		
43) trans-1,3-Dichloroprop...	7.625	79	46299	31.802	ug/L	0.00
Spiked Amount	50.000	Range 60 - 125	Recovery =	63.600%		
47) 2-Hexanone-d5	8.105	63	113787	96.952	ug/L	0.02
Spiked Amount	100.000	Range 45 - 130	Recovery =	96.950%		
56) 1,1,2,2-Tetrachloroeth...	10.223	84	172058	43.921	ug/L	0.00
Spiked Amount	50.000	Range 65 - 120	Recovery =	87.840%		
66) 1,2-Dichlorobenzene-d4	11.629	152	148710	38.806	ug/L	0.00
Spiked Amount	50.000	Range 80 - 120	Recovery =	77.620%#		
Target Compounds						
						Qvalue
16) Methylene chloride	2.494	84	2401	0.854	ug/L	95
25) Chloroform	4.372	83	8158	1.705	ug/L	93
34) Trichloroethene	5.918	95	5121	1.733	ug/L	89
46) Tetrachloroethene	7.976	164	458544	199.550	ug/L	98
-----						

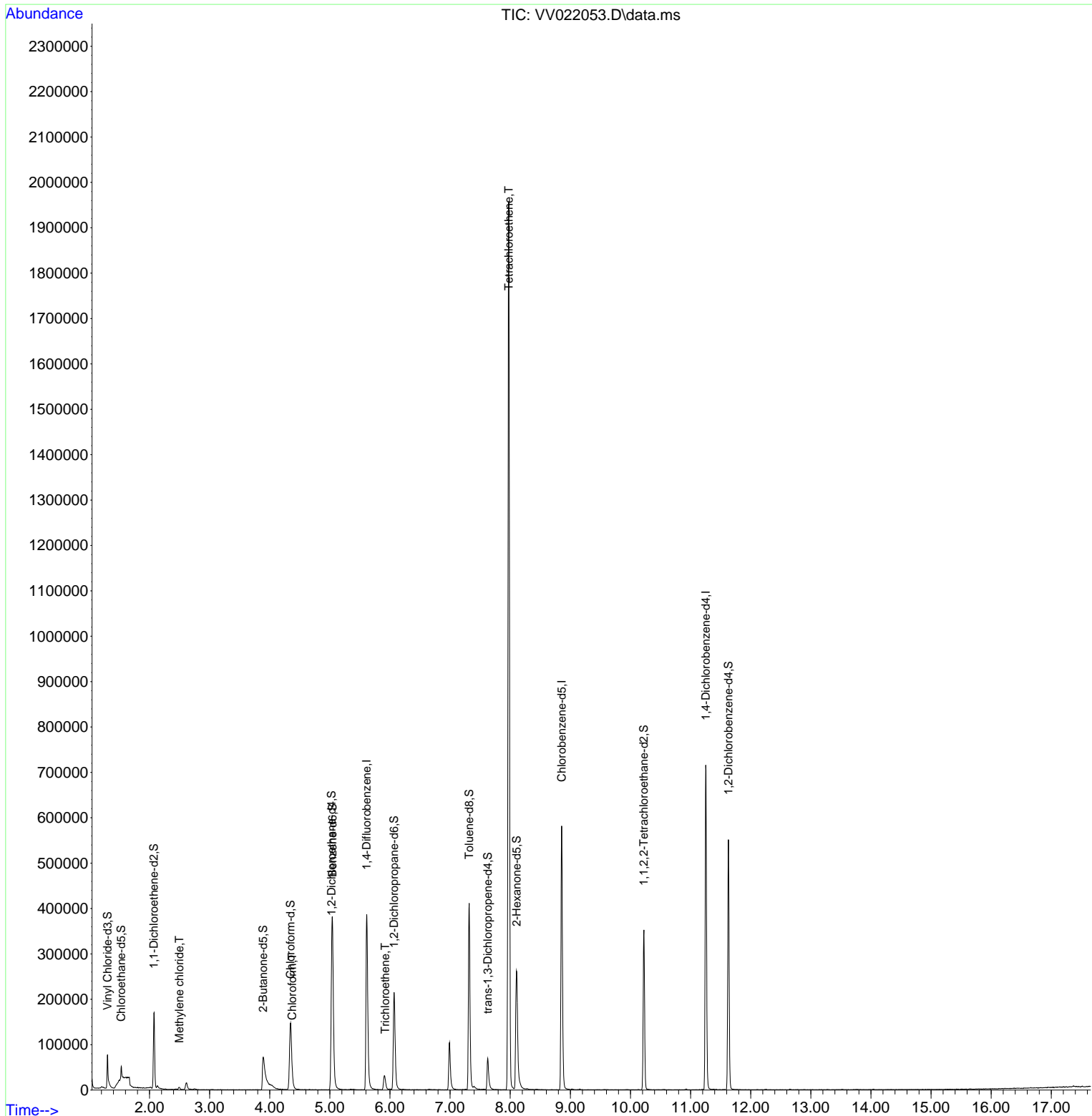
(#) = qualifier out of range (m) = manual integration (+) = signals summed

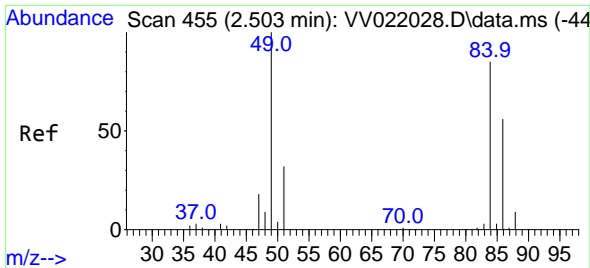
Data Path : Z:\voasrv\HPCHEM1\MSVOA\_V\Data\VV083121\  
 Data File : VV022053.D  
 Acq On : 31 Aug 2021 20:10  
 Operator : SY/MD  
 Sample : M3579-06ME  
 Misc : 6.74g/5.0mL/100uL/5.0mL/MSVOA\_V/MEOH  
 ALS Vial : 28 Sample Multiplier: 1

Instrument :  
 MSVOA\_V  
 ClientSampleId :  
 GB6A8ME

Manual Integrations  
**APPROVED**  
 MMDadoda  
 9/1/2021 12:32:29 PM

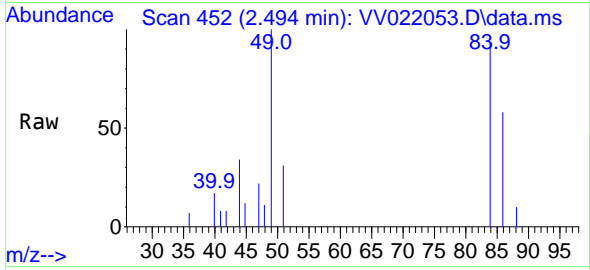
Quant Time: Sep 01 02:48:34 2021  
 Quant Method : Z:\voasrv\HPCHEM1\MSVOA\_V\Method\SFAMVLM082721WMA.M  
 Quant Title : VOC Analysis  
 QLast Update : Wed Sep 01 02:41:24 2021  
 Response via : Initial Calibration





#16  
Methylene chloride  
Concen: 0.854 ug/L  
RT: 2.494 min Scan# 452  
Delta R.T. -0.009 min  
Lab File: VV022053.D  
Acq: 31 Aug 2021 20:10

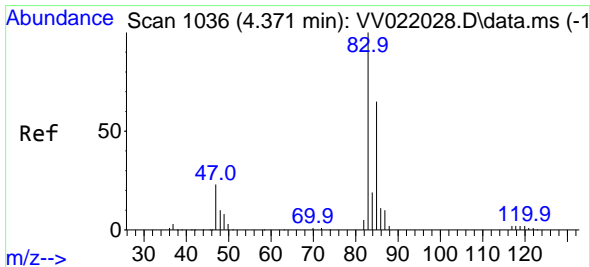
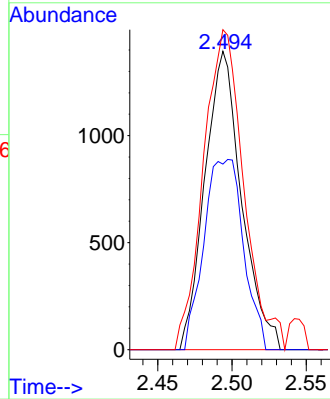
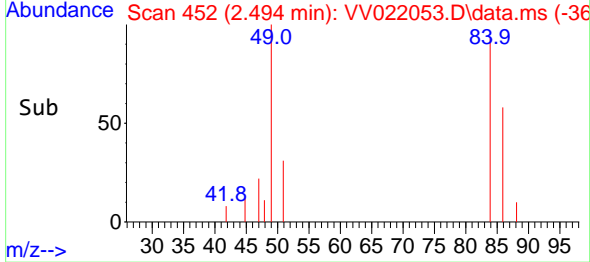
Instrument :  
MSVOA\_V  
ClientSampled :  
GB6A8ME



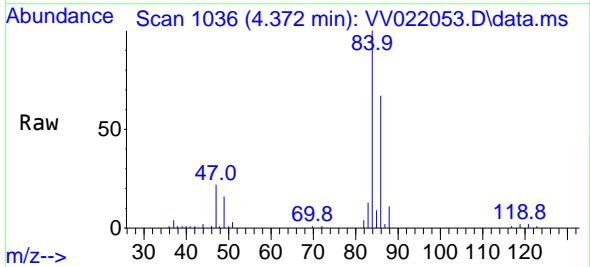
Tgt Ion: 84 Resp: 2401  
Ion Ratio Lower Upper  
84 100  
86 62.2 44.8 83.2  
49 107.2 80.2 149.0

Manual Integrations  
APPROVED

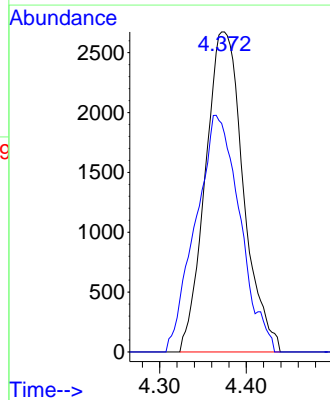
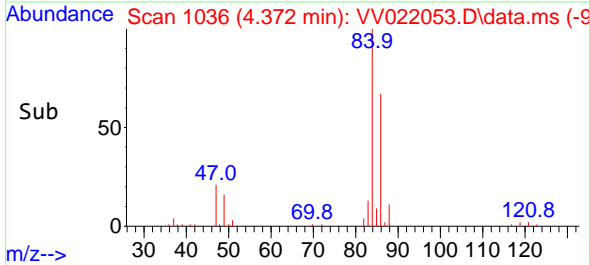
MMDadoda  
9/1/2021 12:32:29 PM

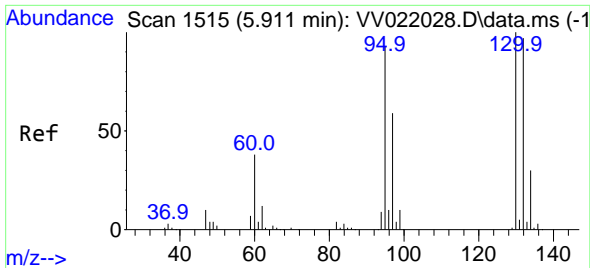


#25  
Chloroform  
Concen: 1.705 ug/L  
RT: 4.372 min Scan# 1036  
Delta R.T. 0.000 min  
Lab File: VV022053.D  
Acq: 31 Aug 2021 20:10



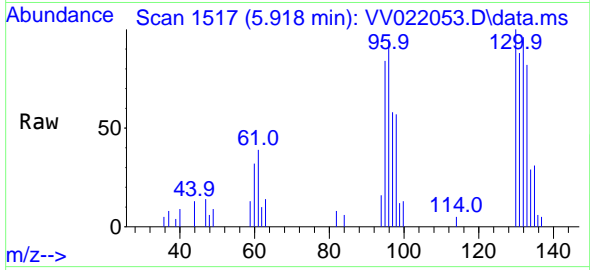
Tgt Ion: 83 Resp: 8158  
Ion Ratio Lower Upper  
83 100  
85 71.5 46.3 85.9





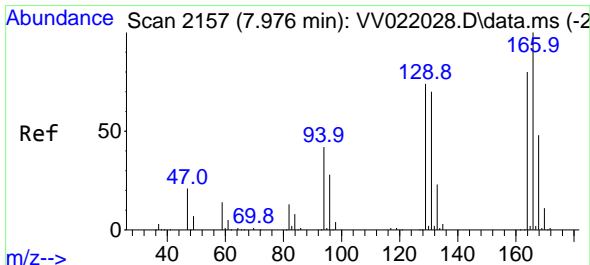
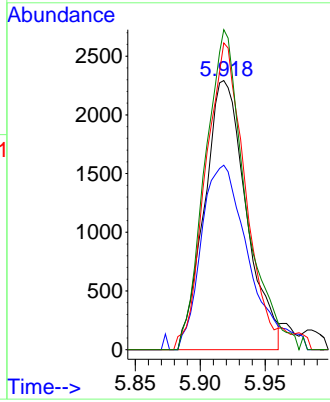
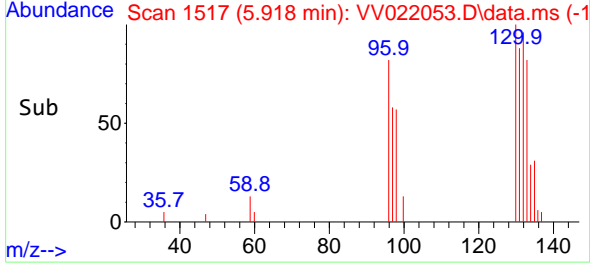
#34  
 Trichloroethene  
 Concen: 1.733 ug/L  
 RT: 5.918 min Scan# 1517  
 Delta R.T. 0.007 min  
 Lab File: VV022053.D  
 Acq: 31 Aug 2021 20:10

Instrument : MSVOA\_V  
 Client Sampled : GB6A8ME

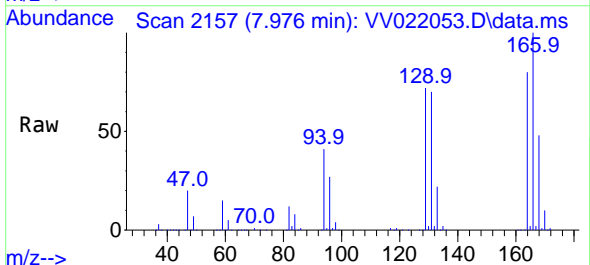


Tgt Ion: 95 Resp: 5121  
 Ion Ratio Lower Upper  
 95 100  
 97 68.5 44.1 81.9  
 132 114.0 70.7 131.3  
 130 118.9 74.8 139.0

Manual Integrations APPROVED  
 MMDadoda  
 9/1/2021 12:32:29 PM



#46  
 Tetrachloroethene  
 Concen: 199.550 ug/L  
 RT: 7.976 min Scan# 2157  
 Delta R.T. 0.000 min  
 Lab File: VV022053.D  
 Acq: 31 Aug 2021 20:10



Tgt Ion: 164 Resp: 458544  
 Ion Ratio Lower Upper  
 164 100  
 129 89.7 62.9 116.9  
 131 87.6 61.0 113.4  
 166 125.0 90.6 168.3

