

Data Path : Z:\voasrv\HPCHEM1\MSVOA_V\Data\VV083122\
 Data File : VV027613.D
 Acq On : 31 Aug 2022 11:43
 Operator : SY/MD
 Sample : VV0831WBL01
 Misc : 25.0mL/MSVOA_V/WATER
 ALS Vial : 3 Sample Multiplier: 1

Instrument :
 MSVOA_V
 ClientSampleId :
 VBLK219

Quant Time: Sep 01 02:34:35 2022
 Quant Method : Z:\voasrv\HPCHEM1\MSVOA_V\Method\SFAMVTR081922WMA.M
 Quant Title : TRACE VOA SFAM1.0
 QLast Update : Thu Sep 01 02:33:10 2022
 Response via : Initial Calibration

Compound	R.T.	QIon	Response	Conc	Units	Dev(Min)

Internal Standards						
1) 1,4-Difluorobenzene	5.616	114	140664	5.000	ug/L	0.00
28) Chlorobenzene-d5	8.854	117	142935	5.000	ug/L	0.00
58) 1,4-Dichlorobenzene-d4	11.249	152	58606	5.000	ug/L	0.00
System Monitoring Compounds						
4) Vinyl Chloride-d3	1.304	65	46839	4.679	ug/L	0.00
Spiked Amount	5.000	Range 40 - 130	Recovery	=	93.600%	
7) Chloroethane-d5	1.564	69	40499	5.528	ug/L	0.00
Spiked Amount	5.000	Range 65 - 130	Recovery	=	110.600%	
11) 1,1-Dichloroethene-d2	2.105	63	72274	3.096	ug/L	0.00
Spiked Amount	5.000	Range 60 - 125	Recovery	=	62.000%	
20) 2-Butanone-d5	3.905	46	61993	49.759	ug/L	0.02
Spiked Amount	50.000	Range 40 - 130	Recovery	=	99.520%	
24) Chloroform-d	4.346	84	101875	5.089	ug/L	0.00
Spiked Amount	5.000	Range 70 - 125	Recovery	=	101.800%	
26) 1,2-Dichloroethane-d4	5.034	65	47777	5.517	ug/L	0.00
Spiked Amount	5.000	Range 70 - 130	Recovery	=	110.400%	
32) Benzene-d6	5.050	84	180923	4.570	ug/L	0.00
Spiked Amount	5.000	Range 70 - 125	Recovery	=	91.400%	
36) 1,2-Dichloropropane-d6	6.069	67	58801	5.108	ug/L	0.00
Spiked Amount	5.000	Range 60 - 140	Recovery	=	102.200%	
41) Toluene-d8	7.313	98	135427	3.788	ug/L	0.00
Spiked Amount	5.000	Range 70 - 130	Recovery	=	75.800%	
43) trans-1,3-Dichloroprop...	7.625	79	17148	4.351	ug/L	0.00
Spiked Amount	5.000	Range 55 - 130	Recovery	=	87.000%	
46) 2-Hexanone-d5	8.092	63	62644	48.287	ug/L	0.00
Spiked Amount	50.000	Range 45 - 130	Recovery	=	96.580%	
56) 1,1,2,2-Tetrachloroeth...	10.217	84	37121	5.064	ug/L	0.00
Spiked Amount	5.000	Range 65 - 120	Recovery	=	101.200%	
66) 1,2-Dichlorobenzene-d4	11.625	152	44554	5.128	ug/L	0.00
Spiked Amount	5.000	Range 80 - 120	Recovery	=	102.600%	

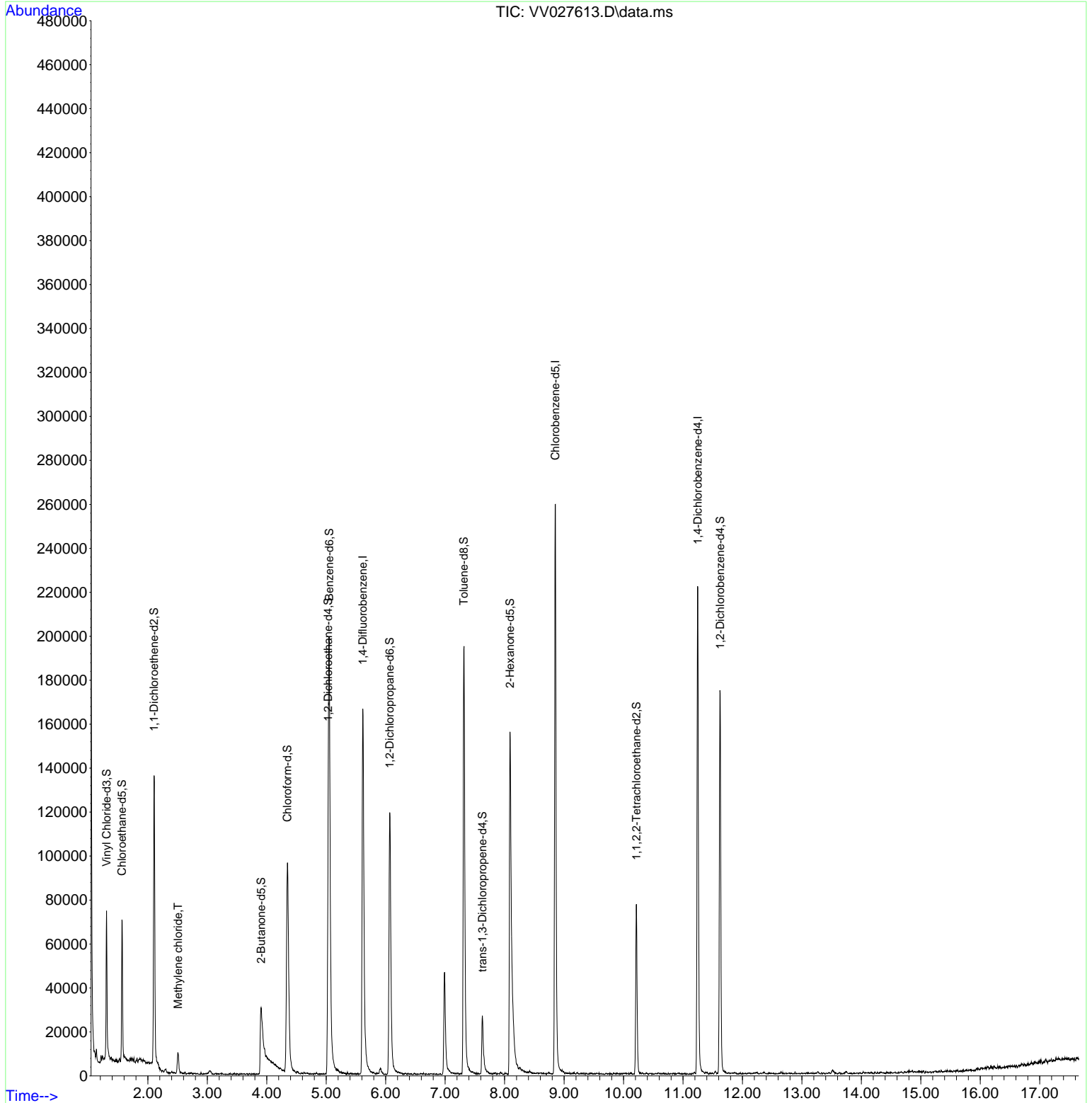
Target Compounds						Qvalue
16) Methylene chloride	2.507	84	3813	0.238	ug/L	88

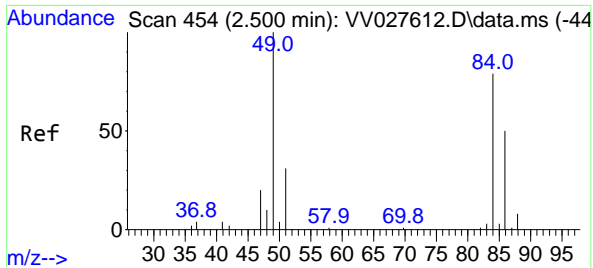
(#) = qualifier out of range (m) = manual integration (+) = signals summed

Data Path : Z:\voasrv\HPCHEM1\MSVOA_V\Data\VV083122\
 Data File : VV027613.D
 Acq On : 31 Aug 2022 11:43
 Operator : SY/MD
 Sample : VV0831WBL01
 Misc : 25.0mL/MSVOA_V/WATER
 ALS Vial : 3 Sample Multiplier: 1

Instrument :
 MSVOA_V
 ClientSampleId :
 VBLK219

Quant Time: Sep 01 02:34:35 2022
 Quant Method : Z:\voasrv\HPCHEM1\MSVOA_V\Method\SFAMVTR081922WMA.M
 Quant Title : TRACE VOA SFAM1.0
 QLast Update : Thu Sep 01 02:33:10 2022
 Response via : Initial Calibration





#16
 Methylene chloride
 Concen: 0.238 ug/L
 RT: 2.507 min Scan# 41
 Delta R.T. 0.006 min
 Lab File: VV027613.D
 Acq: 31 Aug 2022 11:43

Instrument : MSVOA_V
 ClientSampleId : VBLK219

Tgt Ion: 84 Resp: 3813

Ion	Ratio	Lower	Upper
84	100		
86	63.0	44.0	81.6
49	107.8	89.4	166.0

