

Data Path : Z:\voasrv\HPCHEM1\MSVOA_V\Data\VV090121\
 Data File : VV022062.D
 Acq On : 01 Sep 2021 13:11
 Operator : SY/MD
 Sample : M3608-04
 Misc : 5.0mL/MSVOA_V/WATER
 ALS Vial : 8 Sample Multiplier: 1

Instrument :
 MSVOA_V
 ClientSampleId :
 DBKK0

Integration Parameters: LSCINT.P

Integrator: RTE
 Smoothing : OFF Filtering: 5
 Sampling : 1 Min Area: 0 % of largest Peak
 Start Thrs: 0.2 Max Peaks: 100
 Stop Thrs : 0 Peak Location: TOP

If leading or trailing edge < 100 prefer < Baseline drop else tangent >
 Peak separation: 5

Method : Z:\voasrv\HPCHEM1\MSVOA_V\Method\SFAMVLM082721WMA.M
 Title : VOC Analysis

Signal : TIC: VV022062.D\data.ms

peak #	R.T. min	first scan	max scan	last scan	PK TY	peak height	corr. area	corr. % max.	% of total
1	1.304	76	82	98	rVB	210084	209060	15.15%	1.793%
2	1.564	156	163	176	rVB	161410	185657	13.46%	1.592%
3	2.105	321	331	345	rBV	336030	490369	35.54%	4.206%
4	2.413	425	427	428	rBV	387	145	0.01%	0.001%
5	2.500	451	454	462	rVB3	937	1101	0.08%	0.009%
6	2.677	507	509	512	rBV2	234	135	0.01%	0.001%
7	2.751	529	532	534	rBV3	334	262	0.02%	0.002%
8	3.076	630	633	636	rBV2	287	187	0.01%	0.002%
9	3.153	654	657	661	rBV2	295	226	0.02%	0.002%
10	3.240	682	684	688	rVB3	501	218	0.02%	0.002%
11	3.298	698	702	703	rBV2	252	152	0.01%	0.001%
12	3.310	703	706	710	rVB2	391	232	0.02%	0.002%
13	3.519	768	771	775	rBV2	335	287	0.02%	0.002%
14	3.645	803	810	816	rBV2	269	444	0.03%	0.004%
15	3.728	832	836	840	rVB	184	161	0.01%	0.001%
16	3.796	853	857	858	rBV	241	150	0.01%	0.001%
17	3.876	872	882	915	rBV	111687	296415	21.48%	2.542%
18	4.349	1013	1029	1064	rBV	208002	535241	38.79%	4.591%
19	4.648	1120	1122	1125	rVB2	671	367	0.03%	0.003%
20	4.664	1125	1127	1130	rVB2	427	205	0.01%	0.002%
21	4.680	1130	1132	1139	rBV2	506	412	0.03%	0.004%
22	4.757	1153	1156	1159	rBV3	426	270	0.02%	0.002%
23	4.802	1167	1170	1173	rBV2	248	208	0.02%	0.002%
24	4.960	1216	1219	1222	rBV2	302	257	0.02%	0.002%
25	5.047	1226	1246	1289	rBV2	543004	1379794	100.00%	11.834%
26	5.281	1317	1319	1322	rBV3	596	415	0.03%	0.004%
27	5.339	1335	1337	1340	rBV2	392	241	0.02%	0.002%
28	5.413	1356	1360	1364	rBV3	419	253	0.02%	0.002%
29	5.529	1392	1396	1397	rBV2	426	237	0.02%	0.002%
30	5.571	1406	1409	1411	rBV2	647	393	0.03%	0.003%
31	5.619	1412	1424	1452	rVV	385509	773395	56.05%	6.633%
32	5.908	1503	1514	1530	rBV3	17919	37790	2.74%	0.324%
33	6.014	1546	1547	1549	rBV2	262	136	0.01%	0.001%
34	6.072	1551	1565	1594	rBV	299670	611369	44.31%	5.243%
35	6.317	1639	1641	1643	rBV	275	156	0.01%	0.001%
36	6.362	1651	1655	1658	rBV3	351	276	0.02%	0.002%

Data Path : Z:\voasrv\HPCHEM1\MSVOA_V\Data\VW090121\
 Data File : VW022062.D
 Acq On : 01 Sep 2021 13:11
 Operator : SY/MD
 Sample : M3608-04
 Misc : 5.0mL/MSVOA_V/WATER
 ALS Vial : 8 Sample Multiplier: 1

Instrument :
 MSVOA_V
 ClientSampleId :
 DBKK0

Integration Parameters: LSCINT.P

Integrator: RTE
 Smoothing : OFF Filtering: 5
 Sampling : 1 Min Area: 0 % of largest Peak
 Start Thrs: 0.2 Max Peaks: 100
 Stop Thrs : 0 Peak Location: TOP

If leading or trailing edge < 100 prefer < Baseline drop else tangent >
 Peak separation: 5

Method : Z:\voasrv\HPCHEM1\MSVOA_V\Method\SFAMVLM082721WMA.M
 Title : VOC Analysis

37	6.658	1740	1747	1751	rBV3	488	540	0.04%	0.005%
38	6.741	1771	1773	1775	rBV2	338	223	0.02%	0.002%
39	6.770	1780	1782	1785	rVV2	244	141	0.01%	0.001%
40	6.802	1788	1792	1794	rBV	313	150	0.01%	0.001%
41	6.860	1807	1810	1817	rVB	229	218	0.02%	0.002%
42	6.989	1839	1850	1879	rBV	164716	305314	22.13%	2.619%
43	7.317	1939	1952	1971	rBV	670074	1165961	84.50%	10.000%
44	7.625	2037	2048	2072	rBV	108886	194956	14.13%	1.672%
45	7.870	2121	2124	2128	rVB3	398	256	0.02%	0.002%
46	7.908	2131	2136	2138	rBV2	223	195	0.01%	0.002%
47	7.921	2138	2140	2141	rBV2	428	204	0.01%	0.002%
48	8.018	2167	2170	2172	rVB	268	138	0.01%	0.001%
49	8.088	2178	2192	2228	rBV	329008	635688	46.07%	5.452%
50	8.400	2285	2289	2292	rVB3	515	328	0.02%	0.003%
51	8.419	2292	2295	2297	rBV2	375	248	0.02%	0.002%
52	8.532	2326	2330	2332	rBV2	399	289	0.02%	0.002%
53	8.571	2339	2342	2343	rBV	344	214	0.02%	0.002%
54	8.603	2349	2352	2354	rBV3	212	133	0.01%	0.001%
55	8.722	2387	2389	2392	rVB2	400	205	0.01%	0.002%
56	8.854	2417	2430	2455	rBV	582986	943916	68.41%	8.096%
57	9.133	2512	2517	2518	rBV	734	605	0.04%	0.005%
58	9.230	2544	2547	2552	rBV2	426	277	0.02%	0.002%
59	9.265	2555	2558	2561	rBV	163	136	0.01%	0.001%
60	9.288	2561	2565	2569	rVB2	259	158	0.01%	0.001%
61	9.516	2633	2636	2637	rBV	352	171	0.01%	0.001%
62	9.551	2643	2647	2654	rBV2	832	962	0.07%	0.008%
63	9.690	2686	2690	2694	rBV2	332	267	0.02%	0.002%
64	9.754	2707	2710	2713	rBV2	323	242	0.02%	0.002%
65	9.783	2717	2719	2725	rBV2	304	221	0.02%	0.002%
66	9.809	2725	2727	2732	rBV	333	196	0.01%	0.002%
67	9.963	2771	2775	2777	rBV	176	151	0.01%	0.001%
68	10.133	2820	2828	2840	rVB4	3483	5567	0.40%	0.048%
69	10.217	2842	2854	2875	rBV	406186	637465	46.20%	5.467%
70	10.458	2926	2929	2931	rBV2	519	325	0.02%	0.003%
71	10.503	2941	2943	2946	rBV	238	134	0.01%	0.001%
72	10.535	2951	2953	2955	rBV	376	173	0.01%	0.001%
73	10.770	3024	3026	3031	rVB2	414	277	0.02%	0.002%
74	10.828	3042	3044	3048	rVV2	235	169	0.01%	0.001%
75	10.860	3051	3054	3057	rVV2	420	288	0.02%	0.002%
76	10.886	3057	3062	3065	rVV4	718	694	0.05%	0.006%

Data Path : Z:\voasrv\HPCHEM1\MSVOA_V\Data\VV090121\
 Data File : VV022062.D
 Acq On : 01 Sep 2021 13:11
 Operator : SY/MD
 Sample : M3608-04
 Misc : 5.0mL/MSVOA_V/WATER
 ALS Vial : 8 Sample Multiplier: 1

Instrument :
 MSVOA_V
 ClientSampleId :
 DBKK0

Integration Parameters: LSCINT.P

Integrator: RTE
 Smoothing : OFF Filtering: 5
 Sampling : 1 Min Area: 0 % of largest Peak
 Start Thrs: 0.2 Max Peaks: 100
 Stop Thrs : 0 Peak Location: TOP

If leading or trailing edge < 100 prefer < Baseline drop else tangent >
 Peak separation: 5

Method : Z:\voasrv\HPCHEM1\MSVOA_V\Method\SFAMVLM082721WMA.M
 Title : VOC Analysis

77	10.918	3066	3072	3083	rVB7	3815	5880	0.43%	0.050%
78	11.034	3103	3108	3115	rBV4	528	768	0.06%	0.007%
79	11.252	3164	3176	3195	rBV	633325	991623	71.87%	8.505%
80	11.532	3253	3263	3275	rBV3	9536	15386	1.12%	0.132%
81	11.625	3279	3292	3315	rBV	685042	1071442	77.65%	9.189%
82	11.924	3383	3385	3389	rVB2	613	322	0.02%	0.003%
83	12.252	3484	3487	3490	rVB2	582	342	0.02%	0.003%
84	12.448	3544	3548	3550	rBV2	249	172	0.01%	0.001%
85	12.477	3550	3557	3567	rVV8	2164	3468	0.25%	0.030%
86	12.596	3591	3594	3597	rBV2	540	342	0.02%	0.003%
87	12.857	3673	3675	3678	rBV	232	141	0.01%	0.001%
88	12.882	3680	3683	3690	rVV4	809	1006	0.07%	0.009%
89	13.114	3752	3755	3759	rBV	240	235	0.02%	0.002%
90	13.313	3813	3817	3819	rBV	318	287	0.02%	0.002%
91	13.365	3829	3833	3835	rBV3	466	311	0.02%	0.003%
92	13.429	3846	3853	3858	rBV3	495	695	0.05%	0.006%
93	13.506	3864	3877	3898	rBV	369140	587723	42.59%	5.041%
94	13.625	3907	3914	3929	rVB	20449	32287	2.34%	0.277%
95	14.635	4219	4228	4242	rBV	43809	70396	5.10%	0.604%
96	14.818	4275	4285	4302	rBV	83107	131565	9.54%	1.128%
97	15.368	4446	4456	4469	rBV	54391	82530	5.98%	0.708%
98	15.670	4543	4550	4565	rVB4	15413	25577	1.85%	0.219%
99	15.815	4588	4595	4601	rBV2	22696	31337	2.27%	0.269%
100	16.487	4795	4804	4816	rBV	119430	181422	13.15%	1.556%

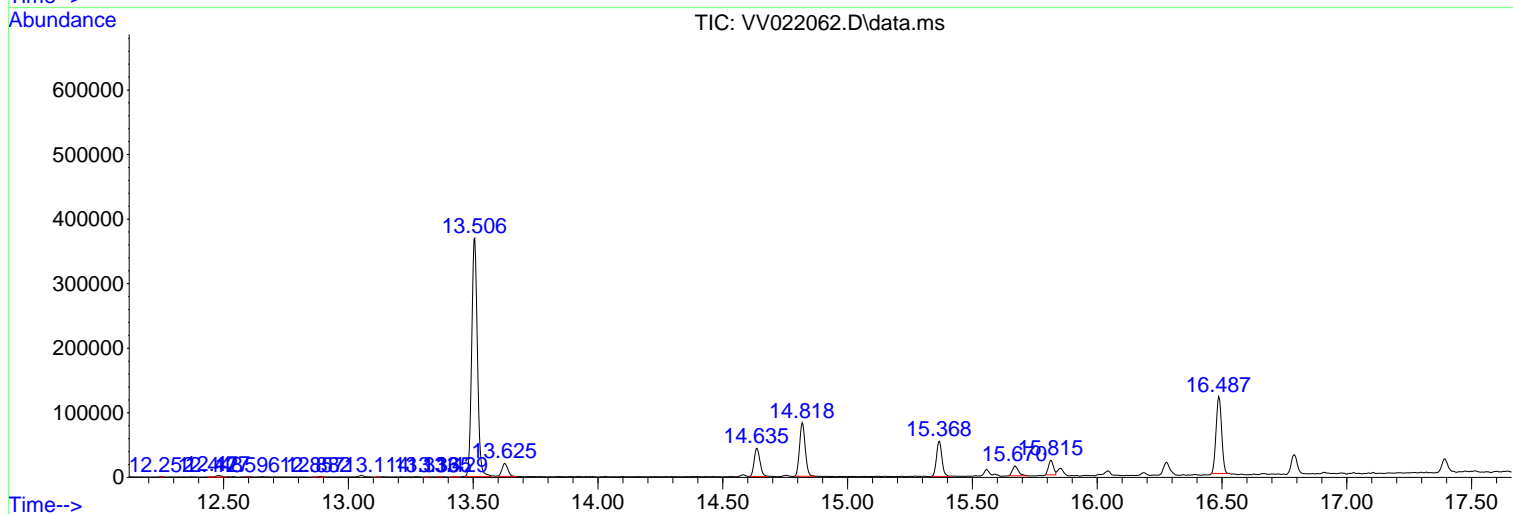
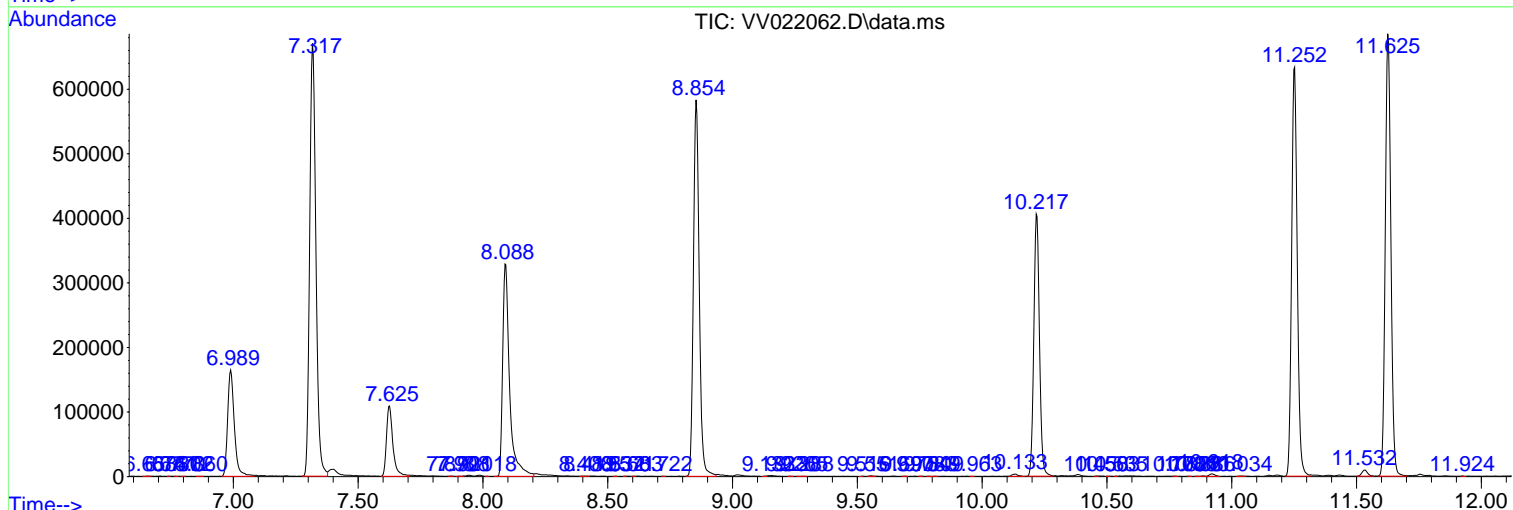
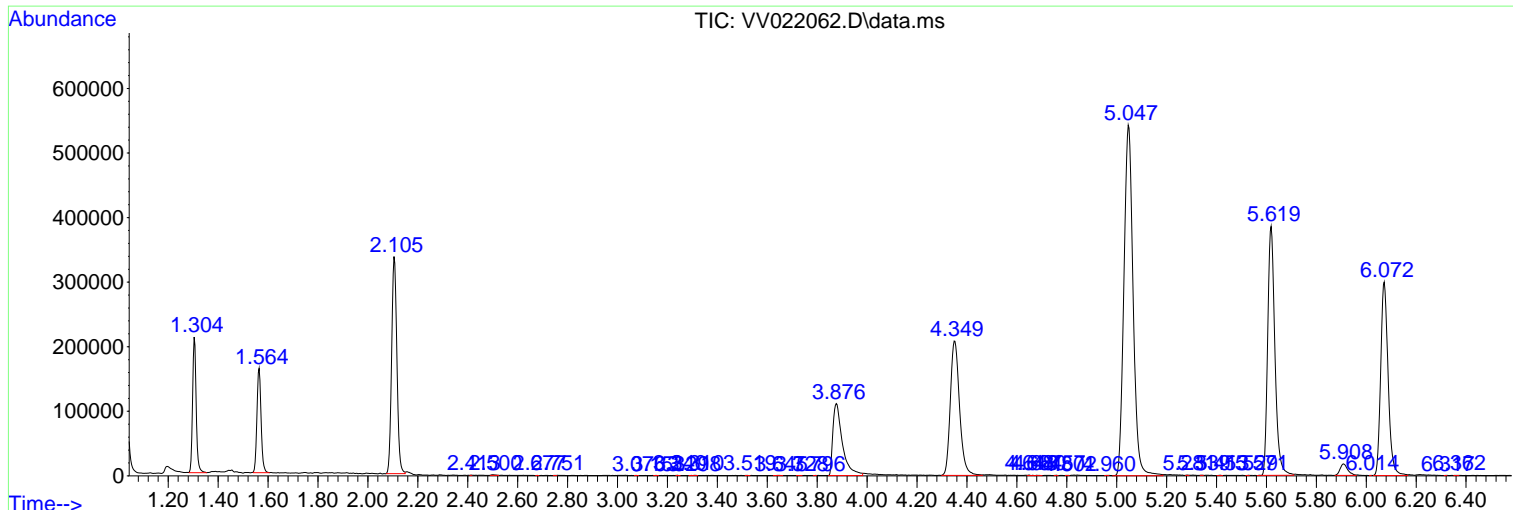
Sum of corrected areas: 11659668

Data Path : Z:\voasrv\HPCHEM1\MSVOA_V\Data\VV090121\
 Data File : VV022062.D
 Acq On : 01 Sep 2021 13:11
 Operator : SY/MD
 Sample : M3608-04
 Misc : 5.0mL/MSVOA_V/WATER
 ALS Vial : 8 Sample Multiplier: 1

Instrument :
 MSVOA_V
 ClientSampled :
 DBKK0

Quant Method : Z:\voasrv\HPCHEM1\MSVOA_V\Method\SFAMVLM082721WMA.M
 Quant Title : VOC Analysis

TIC Library : C:\Database\NIST20.L
 TIC Integration Parameters: LSCINT.P



Data Path : Z:\voasrv\HPCHEM1\MSVOA_V\Data\VV090121\
 Data File : VV022062.D
 Acq On : 01 Sep 2021 13:11
 Operator : SY/MD
 Sample : M3608-04
 Misc : 5.0mL/MSVOA_V/WATER
 ALS Vial : 8 Sample Multiplier: 1

Instrument :
 MSVOA_V
 ClientSampleId :
 DBKK0

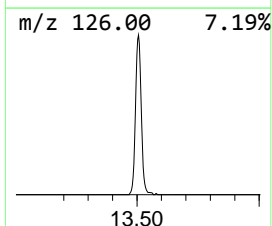
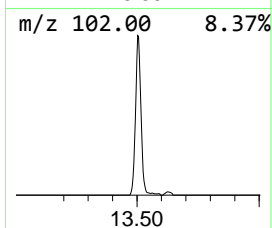
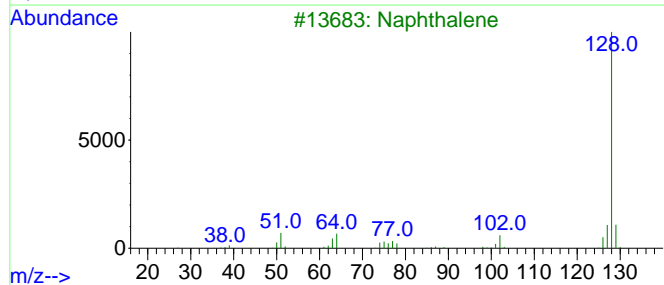
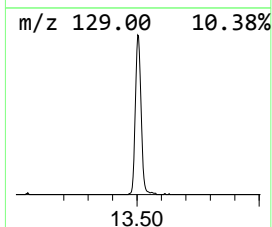
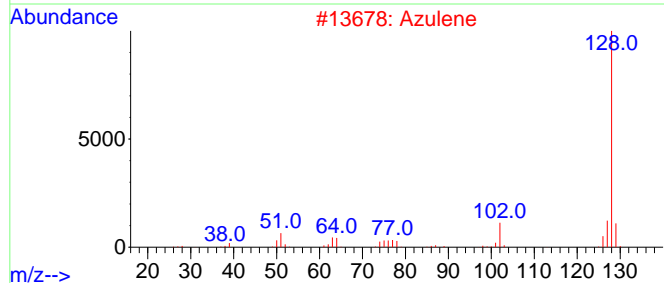
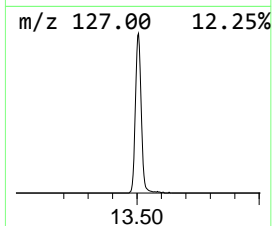
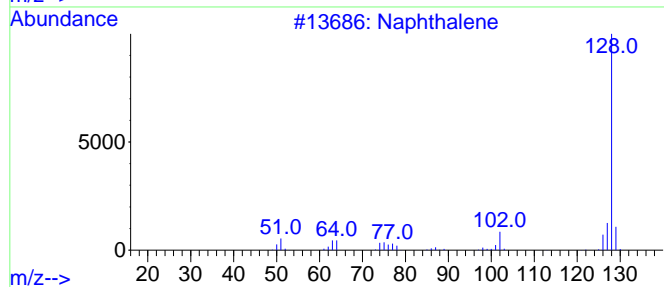
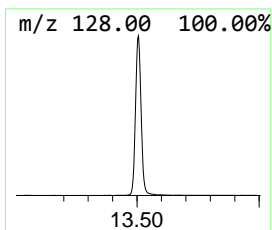
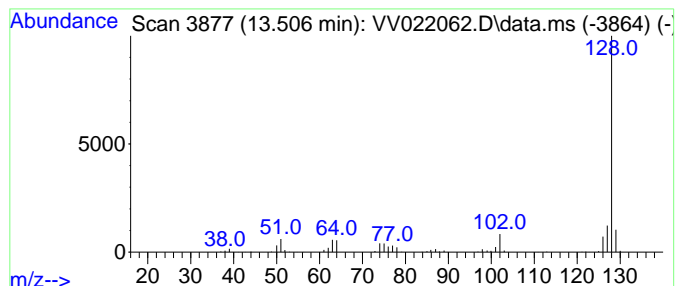
Quant Method : Z:\voasrv\HPCHEM1\MSVOA_V\Method\SFAMVLM082721WMA.M
 Quant Title : VOC Analysis

TIC Library : C:\Database\NIST20.L
 TIC Integration Parameters: LSCINT.P

 Peak Number 2 Azulene Concentration Rank 1

R.T.	EstConc	Area	Relative to ISTD	R.T.
13.506	29.63 ug/L	587723	1,4-Dichlorobenzene-d4	11.252

Hit#	of 5	Tentative ID	MW	MolForm	CAS#	Qual
1		Naphthalene	128	C10H8	000091-20-3	95
2		Azulene	128	C10H8	000275-51-4	94
3		Naphthalene	128	C10H8	000091-20-3	93
4		Azulene	128	C10H8	000275-51-4	91
5		Azulene	128	C10H8	000275-51-4	91



Data Path : Z:\voasrv\HPCHEM1\MSVOA_V\Data\VV090121\
 Data File : VV022062.D
 Acq On : 01 Sep 2021 13:11
 Operator : SY/MD
 Sample : M3608-04
 Misc : 5.0mL/MSVOA_V/WATER
 ALS Vial : 8 Sample Multiplier: 1

Instrument :
 MSVOA_V
 ClientSampled :
 DBKK0

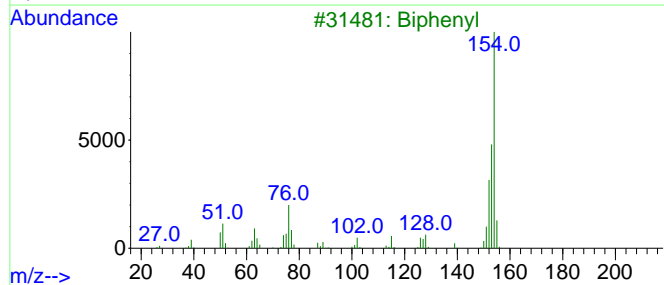
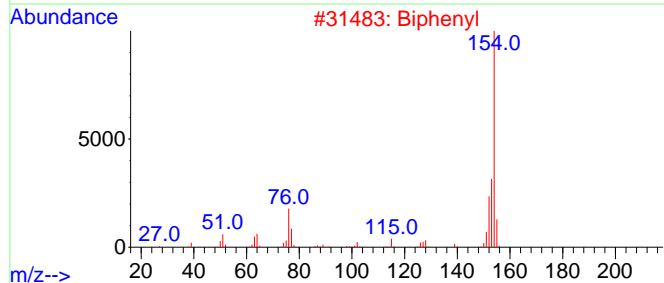
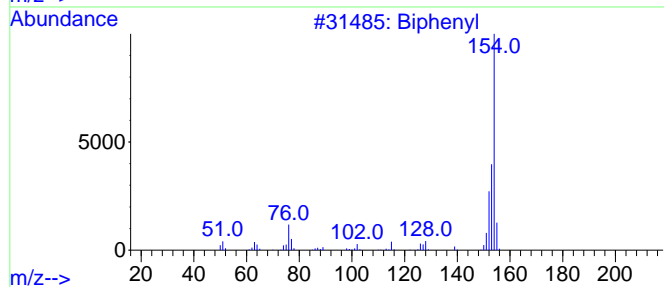
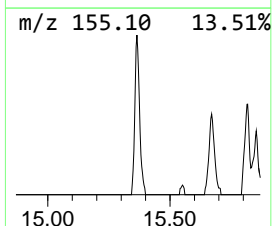
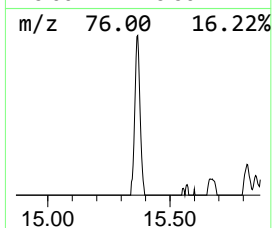
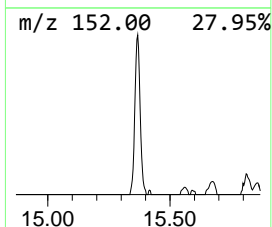
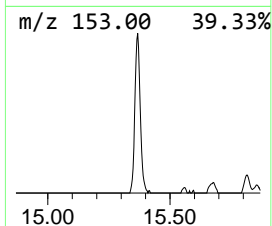
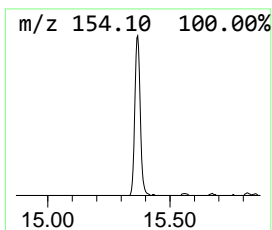
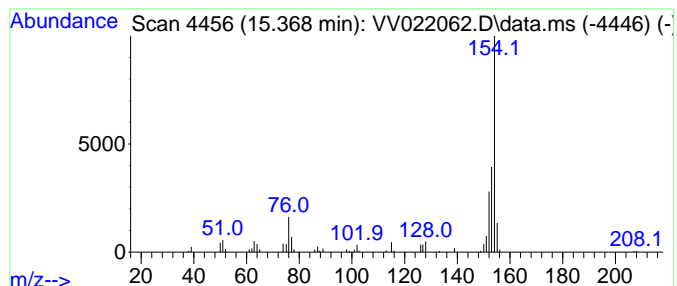
Quant Method : Z:\voasrv\HPCHEM1\MSVOA_V\Method\SFAMVLM082721WMA.M
 Quant Title : VOC Analysis

TIC Library : C:\Database\NIST20.L
 TIC Integration Parameters: LSCINT.P

 Peak Number 5 Biphenyl Concentration Rank 5

R.T.	EstConc	Area	Relative to ISTD	R.T.
15.368	4.16 ug/L	82530	1,4-Dichlorobenzene-d4	11.252

Hit#	of 5	Tentative ID	MW	MolForm	CAS#	Qual
1		Biphenyl	154	C12H10	000092-52-4	95
2		Biphenyl	154	C12H10	000092-52-4	91
3		Biphenyl	154	C12H10	000092-52-4	87
4		Naphthalene, 2-ethenyl-	154	C12H10	000827-54-3	87
5		Biphenyl	154	C12H10	000092-52-4	76



Data Path : Z:\voasrv\HPCHEM1\MSVOA_V\Data\VV090121\
 Data File : VV022062.D
 Acq On : 01 Sep 2021 13:11
 Operator : SY/MD
 Sample : M3608-04
 Misc : 5.0mL/MSVOA_V/WATER
 ALS Vial : 8 Sample Multiplier: 1

Instrument :
 MSVOA_V
 ClientSampleID :
 DBKK0

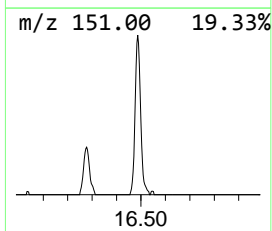
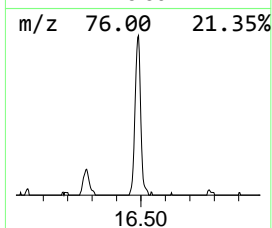
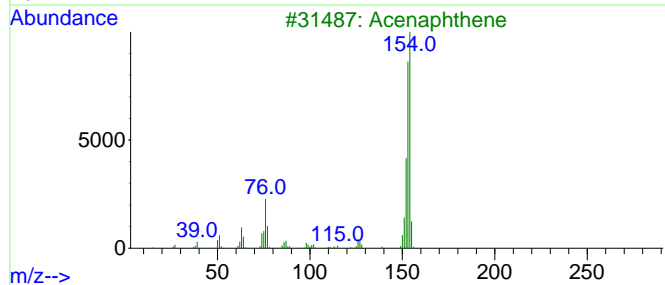
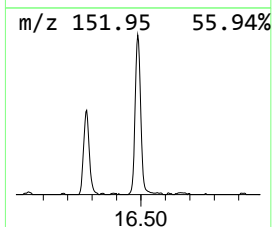
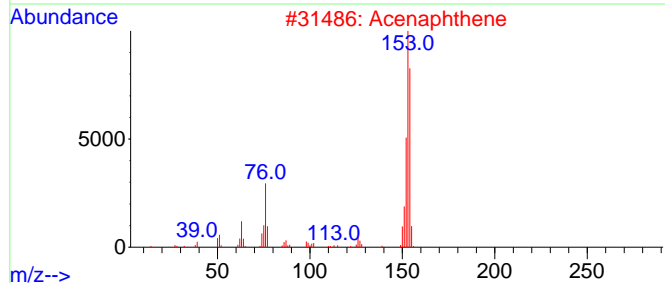
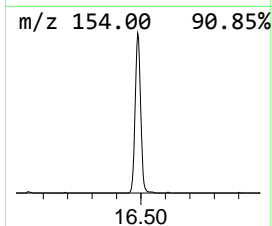
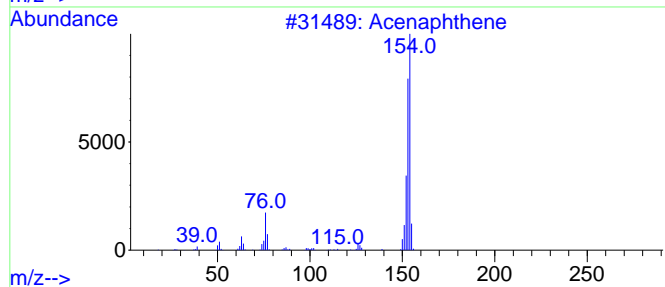
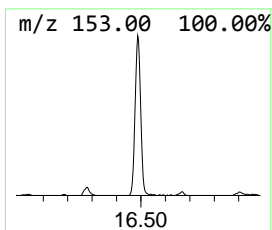
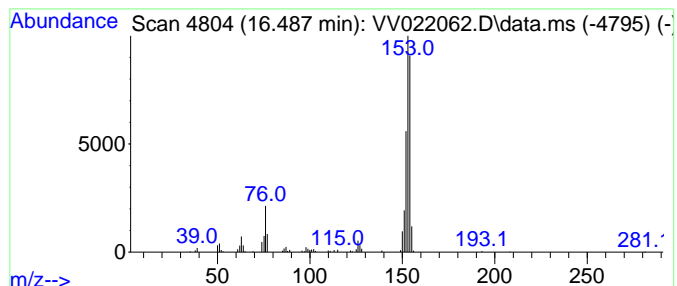
Quant Method : Z:\voasrv\HPCHEM1\MSVOA_V\Method\SFAMVLM082721WMA.M
 Quant Title : VOC Analysis

TIC Library : C:\Database\NIST20.L
 TIC Integration Parameters: LSCINT.P

 Peak Number 6 Naphthalene, 2-ethenyl- Concentration Rank 3

R.T.	EstConc	Area	Relative to ISTD	R.T.
16.487	9.15 ug/L	181422	1,4-Dichlorobenzene-d4	11.252

Hit#	of	5	Tentative ID	MW	MolForm	CAS#	Qual
1			Acenaphthene	154	C12H10	000083-32-9	94
2			Acenaphthene	154	C12H10	000083-32-9	86
3			Acenaphthene	154	C12H10	000083-32-9	64
4			Naphthalene, 2-ethenyl-	154	C12H10	000827-54-3	64
5			Hexa-2,4-diyn-1-ylbenzene	154	C12H10	000520-74-1	59



Data Path : Z:\voasrv\HPCHEM1\MSVOA_V\Data\VV090121\
Data File : VV022062.D
Acq On : 01 Sep 2021 13:11
Operator : SY/MD
Sample : M3608-04
Misc : 5.0mL/MSVOA_V/WATER
ALS Vial : 8 Sample Multiplier: 1

Instrument :
MSVOA_V
ClientSampleId :
DBKK0

Quant Method : Z:\voasrv\HPCHEM1\MSVOA_V\Method\SFAMVLM082721WMA.M
Quant Title : VOC Analysis

TIC Library : C:\Database\NIST20.L
TIC Integration Parameters: LSCINT.P

TIC Top Hit name	RT	EstConc	Units	Response	--Internal Standard--			
					#	RT	Resp	Conc
Azulene	13.506	29.6	ug/L	587723	3	11.252	991623	50.0
Biphenyl	15.368	4.2	ug/L	82530	3	11.252	991623	50.0
Naphthalene, 2-...	16.487	9.2	ug/L	181422	3	11.252	991623	50.0