

Data Path : Z:\VOASRV\HPCHEM1\MSVOA_V\DATA\VV090418\
 Data File : VV007382.D
 Acq On : 05 Sep 2018 14:06
 Operator : SY/MD
 Sample : VSTDCCC0050EC
 Misc : 5.0 mL/MSVOA_V/WATER
 ALS Vial : 50 Sample Multiplier: 1

Instrument :
 MSVOA_V
 ClientSampleId :
 VSTD05067

Quant Time: Sep 06 00:45:30 2018
 Quant Method : Z:\VOASRV\HPCHEM1\MSVOA_V\METHOD\SOMVLM090418WMA.M
 Quant Title : VOC Analysis
 QLast Update : Thu Sep 06 00:43:59 2018
 Response via : Initial Calibration

Internal Standards	R.T.	QIon	Response	Conc	Units	Dev(Min)
1) 1,4-Difluorobenzene	5.67	114	498037	50.00	ug/L	0.00
28) Chlorobenzene-d5	8.90	117	510212	50.00	ug/L	0.00
60) 1,4-Dichlorobenzene-d4	11.30	152	255219	50.00	ug/L	0.00

System Monitoring Compounds

4) Vinyl Chloride-d3	1.32	65	198343	55.76	ug/L	0.00
Spiked Amount	50.000	Range	60 - 135	Recovery	=	111.52%
7) Chloroethane-d5	1.56	69	141033	60.52	ug/L	-0.01
Spiked Amount	50.000	Range	70 - 130	Recovery	=	121.04%
11) 1,1-Dichloroethene-d2	2.13	63	323478	51.62	ug/L	0.00
Spiked Amount	50.000	Range	60 - 125	Recovery	=	103.24%
21) 2-Butanone-d5	3.95	46	307010	106.10	ug/L	0.00
Spiked Amount	100.000	Range	40 - 130	Recovery	=	106.10%
24) Chloroform-d	4.41	84	377576	51.31	ug/L	0.00
Spiked Amount	50.000	Range	70 - 125	Recovery	=	102.62%
26) 1,2-Dichloroethane-d4	5.09	65	229456	51.69	ug/L	0.00
Spiked Amount	50.000	Range	70 - 125	Recovery	=	103.38%
32) Benzene-d6	5.10	84	752861	48.96	ug/L	0.00
Spiked Amount	50.000	Range	70 - 125	Recovery	=	97.92%
36) 1,2-Dichloropropane-d6	6.12	67	247942	48.11	ug/L	0.00
Spiked Amount	50.000	Range	70 - 120	Recovery	=	96.22%
41) Toluene-d8	7.36	98	706225	53.35	ug/L	0.00
Spiked Amount	50.000	Range	80 - 120	Recovery	=	106.70%
43) trans-1,3-Dichloropropene-	7.67	79	103531	47.17	ug/L	0.00
Spiked Amount	50.000	Range	60 - 125	Recovery	=	94.34%
47) 2-Hexanone-d5	8.14	63	228515	113.12	ug/L	0.00
Spiked Amount	100.000	Range	45 - 130	Recovery	=	113.12%
57) 1,1,2,2-Tetrachloroethane-	10.27	84	366232	52.03	ug/L	0.00
Spiked Amount	50.000	Range	65 - 120	Recovery	=	104.06%
64) 1,2-Dichlorobenzene-d4	11.68	152	288081	52.52	ug/L	0.00
Spiked Amount	50.000	Range	80 - 120	Recovery	=	105.04%

Target Compounds

Target Compounds	R.T.	QIon	Response	Conc	Units	Qvalue
2) Dichlorodifluoromethane	1.14	85	151402	38.302	ug/L	99
3) Chloromethane	1.25	50	241694	57.643	ug/L	100
5) Vinyl chloride	1.32	62	223141	52.490	ug/L	100
6) Bromomethane	1.52	94	87852	42.888	ug/L	99
8) Chloroethane	1.58	64	117843	54.020	ug/L	100
9) Trichlorofluoromethane	1.76	101	268960	49.980	ug/L	99
10) 1,1,2-Trichloro-1,2,2-trif	2.14	101	163247	48.860	ug/L	99
12) 1,1-Dichloroethene	2.14	96	154609	49.086	ug/L	90
13) Acetone	2.20	43	165059	95.791	ug/L	99
14) Carbon disulfide	2.31	76	435135	48.755	ug/L	99
15) Methyl Acetate	2.46	43	188540	50.230	ug/L	99
16) Methylene chloride	2.54	84	188716	50.383	ug/L	98
17) trans-1,2-Dichloroethene	2.79	96	167602	48.777	ug/L	98
18) Methyl tert-butyl Ether	2.81	73	540846	50.259	ug/L	99
19) 1,1-Dichloroethane	3.23	63	348724	49.003	ug/L	99
20) cis-1,2-Dichloroethene	3.96	96	195143	49.353	ug/L	99
22) 2-Butanone	4.04	43	307865	106.680	ug/L	100

Data Path : Z:\VOASRV\HPCHEM1\MSVOA_V\DATA\VV090418\
 Data File : VV007382.D
 Acq On : 05 Sep 2018 14:06
 Operator : SY/MD
 Sample : VSTDCCC0050EC
 Misc : 5.0 mL/MSVOA_V/WATER
 ALS Vial : 50 Sample Multiplier: 1

Instrument :
 MSVOA_V
 ClientSampleId :
 VSTD05067

Quant Time: Sep 06 00:45:30 2018
 Quant Method : Z:\VOASRV\HPCHEM1\MSVOA_V\METHOD\SOMVLM090418WMA.M
 Quant Title : VOC Analysis
 QLast Update : Thu Sep 06 00:43:59 2018
 Response via : Initial Calibration

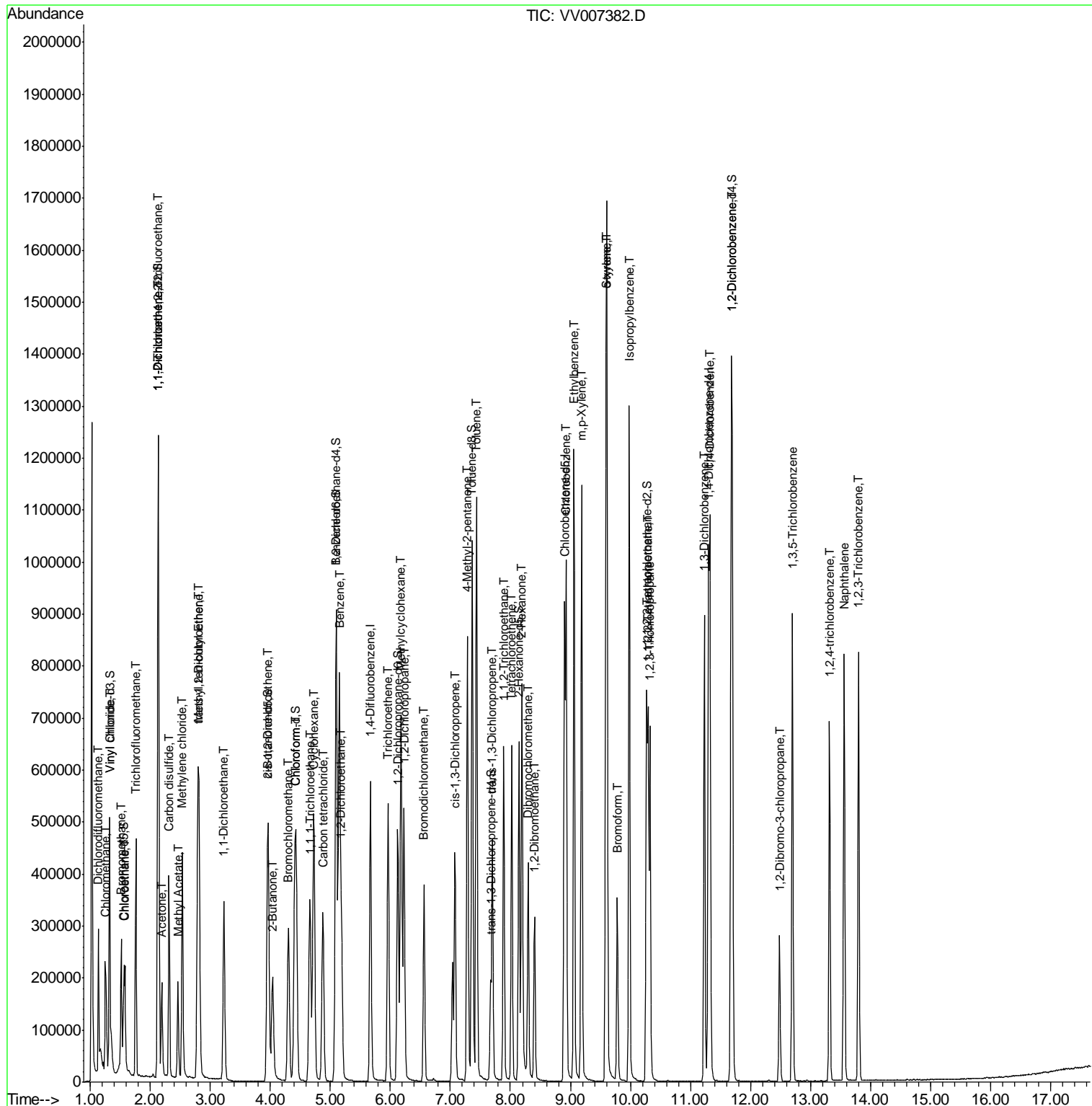
Internal Standards	R.T.	QIon	Response	Conc	Units	Dev(Min)
23) Bromochloromethane	4.30	128	104465	50.495	ug/L	99
25) Chloroform	4.43	83	349843	49.945	ug/L	99
27) 1,2-Dichloroethane	5.19	62	265818	50.682	ug/L	99
29) Cyclohexane	4.73	56	259809	45.932	ug/L	99
30) 1,1,1-Trichloroethane	4.66	97	285043	45.747	ug/L	99
31) Carbon tetrachloride	4.88	117	250794	46.500	ug/L	99
33) Benzene	5.15	78	788107	48.291	ug/L	100
34) Trichloroethene	5.96	95	187515	47.067	ug/L	98
35) Methylcyclohexane	6.18	83	276771	46.588	ug/L	100
37) 1,2-Dichloropropane	6.23	63	211803	47.225	ug/L	99
38) Bromodichloromethane	6.56	83	253286	46.251	ug/L	99
39) cis-1,3-Dichloropropene	7.08	75	268947	44.657	ug/L	100
40) 4-Methyl-2-pentanone	7.28	43	549841	106.123	ug/L	99
42) Toluene	7.44	91	811446	51.685	ug/L	100
44) trans-1,3-Dichloropropene	7.70	75	261095	46.365	ug/L	100
45) 1,1,2-Trichloroethane	7.89	97	203917	48.173	ug/L	100
46) Tetrachloroethene	8.02	164	151017	47.140	ug/L	98
48) 2-Hexanone	8.19	43	453445	112.220	ug/L	100
49) Dibromochloromethane	8.30	129	210287	48.433	ug/L	98
50) 1,2-Dibromoethane	8.40	107	202189	48.906	ug/L	99
51) Chlorobenzene	8.93	112	529156	49.912	ug/L	99
52) Ethylbenzene	9.06	91	831124	52.202	ug/L	100
53) m,p-Xylene	9.19	106	325403	53.385	ug/L	99
54) o-xylene	9.59	106	314508	53.062	ug/L	100
55) Styrene	9.61	104	592744	57.731	ug/L	97
56) Isopropylbenzene	9.98	105	808180	53.911	ug/L	100
58) 1,1,2,2-Tetrachloroethane	10.29	83	340506	50.856	ug/L	99
59) 1,2,3-Trichloropropane	10.32	75	281262	52.729	ug/L	99
61) Bromoform	9.78	173	159884	46.003	ug/L	99
62) 1,3-Dichlorobenzene	11.23	146	381172	49.163	ug/L	99
63) 1,4-Dichlorobenzene	11.32	146	420742	50.597	ug/L	98
65) 1,2-Dichlorobenzene	11.70	146	449933	51.910	ug/L	99
66) 1,2-Dibromo-3-chloropropan	12.48	75	71384	48.578	ug/L	98
67) 1,3,5-Trichlorobenzene	12.70	180	291070	48.922	ug/L	99
68) 1,2,4-trichlorobenzene	13.31	180	225867	49.005	ug/L	99
69) Naphthalene	13.56	128	662442	49.798	ug/L	100
70) 1,2,3-Trichlorobenzene	13.80	180	265817	52.191	ug/L	100

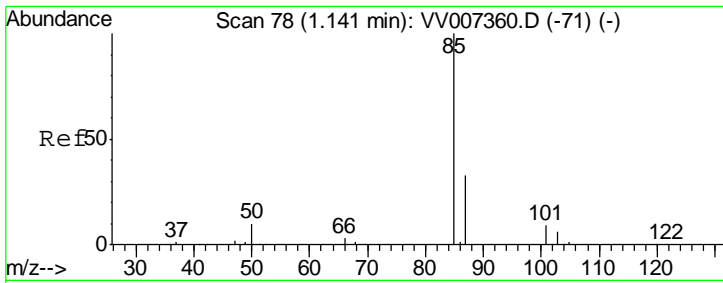
(#) = qualifier out of range (m) = manual integration (+) = signals summed

Data Path : Z:\VOASRV\HPCHEM1\MSVOA_V\DATA\VV090418\
 Data File : VV007382.D
 Acq On : 05 Sep 2018 14:06
 Operator : SY/MD
 Sample : VSTDCCC0050EC
 Misc : 5.0 mL/MSVOA_V/WATER
 ALS Vial : 50 Sample Multiplier: 1

Instrument :
 MSVOA_V
 Client Sampled :
 VSTD05067

Quant Time: Sep 06 00:45:30 2018
 Quant Method : Z:\VOASRV\HPCHEM1\MSVOA_V\METHOD\SOMVLM090418WMA.M
 Quant Title : VOC Analysis
 QLast Update : Thu Sep 06 00:43:59 2018
 Response via : Initial Calibration

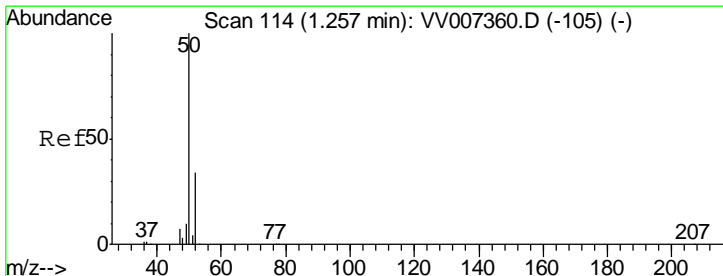
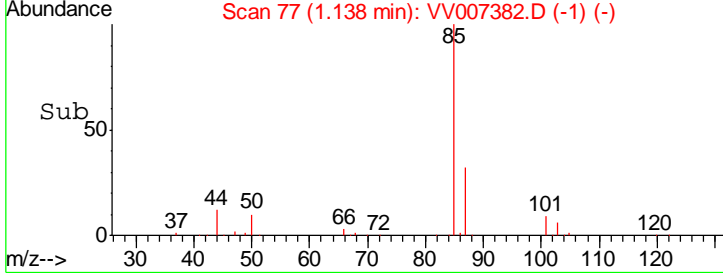
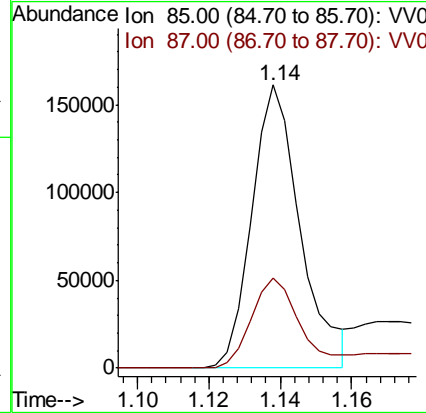
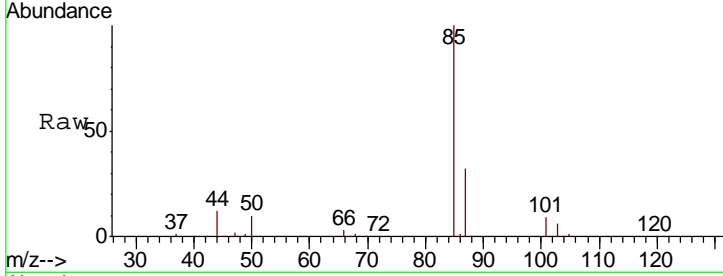




#2
 Dichlorodifluoromethane
 Concen: 38.302 ug/L
 RT: 1.14 min Scan# 77
 Delta R.T. -0.00 min
 Lab File: VV007382.D
 Acq: 05 Sep 2018 14:06

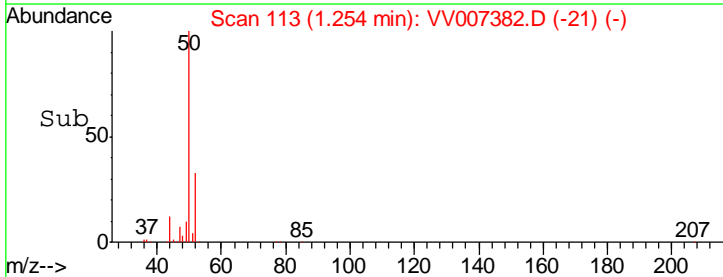
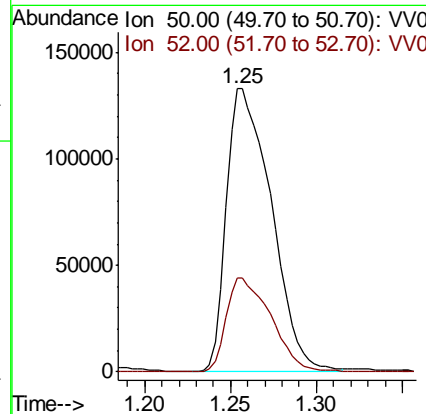
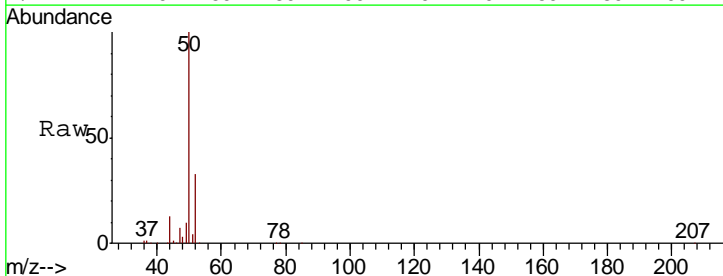
Instrument : MSVOA_V
 ClientSampled : VSTD05067

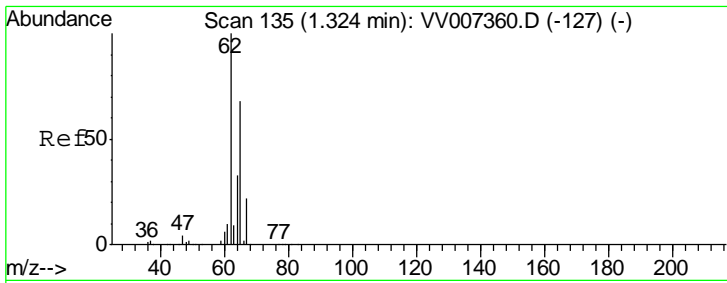
Tgt Ion: 85 Resp: 151402
 Ion Ratio Lower Upper
 85 100
 87 32.1 26.0 39.0



#3
 Chloromethane
 Concen: 57.643 ug/L
 RT: 1.25 min Scan# 113
 Delta R.T. -0.00 min
 Lab File: VV007382.D
 Acq: 05 Sep 2018 14:06

Tgt Ion: 50 Resp: 241694
 Ion Ratio Lower Upper
 50 100
 52 33.1 23.2 43.2

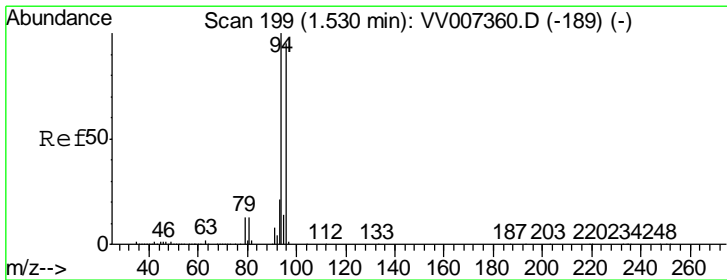
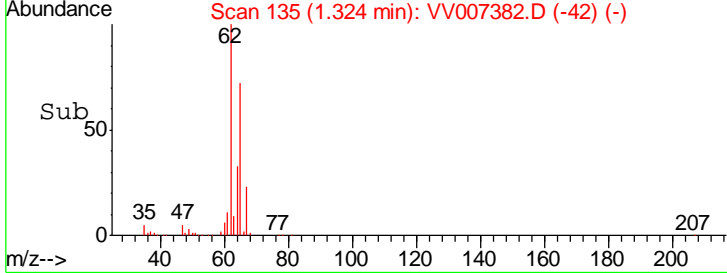
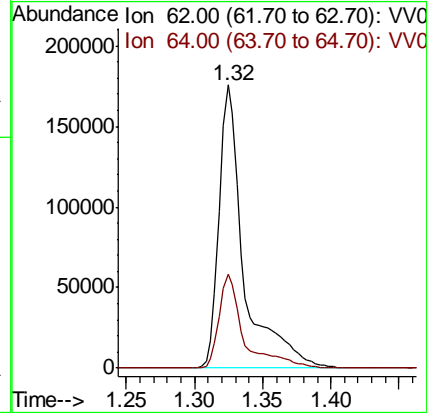
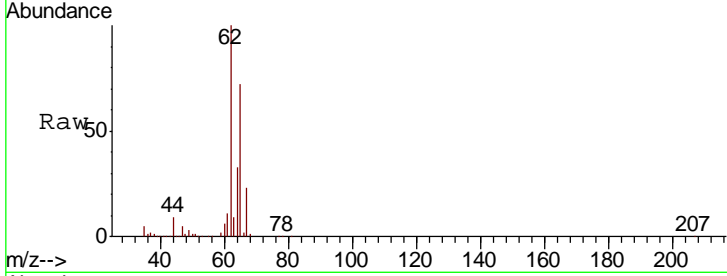




#5
 Vinyl chloride
 Concen: 52.490 ug/L
 RT: 1.32 min Scan# 135
 Delta R.T. 0.00 min
 Lab File: VV007382.D
 Acq: 05 Sep 2018 14:06

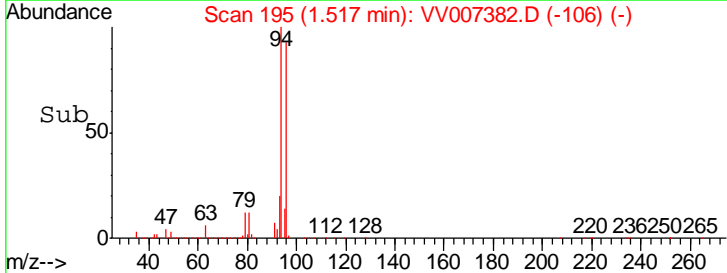
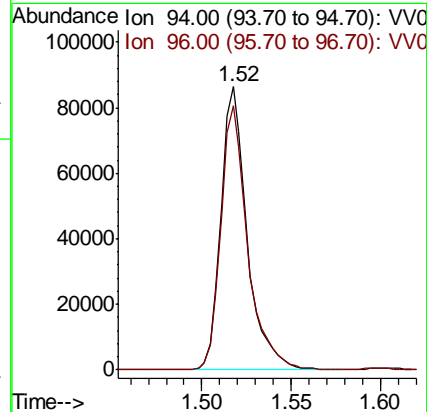
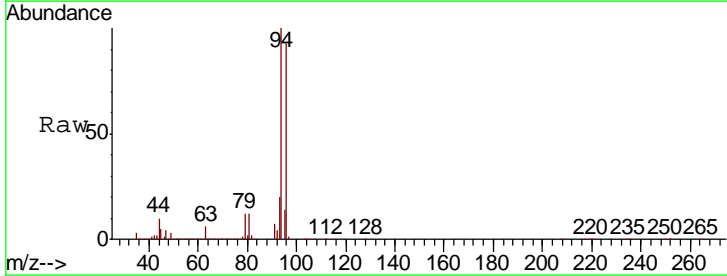
Instrument :
 MSVOA_V
ClientSampled :
 VSTD05067

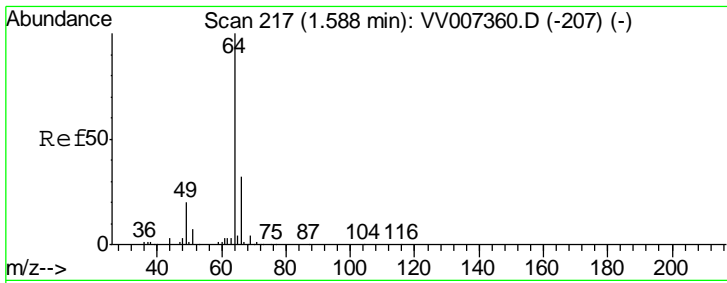
Tgt Ion: 62 Resp: 223141
 Ion Ratio Lower Upper
 62 100
 64 33.0 23.2 43.2



#6
 Bromomethane
 Concen: 42.888 ug/L
 RT: 1.52 min Scan# 195
 Delta R.T. -0.01 min
 Lab File: VV007382.D
 Acq: 05 Sep 2018 14:06

Tgt Ion: 94 Resp: 87852
 Ion Ratio Lower Upper
 94 100
 96 93.2 65.9 122.5

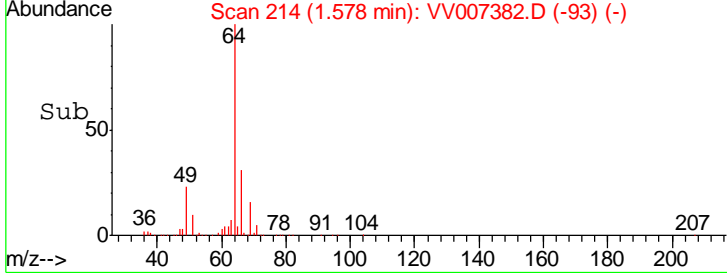
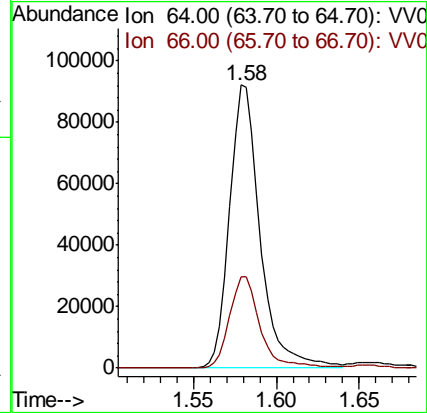
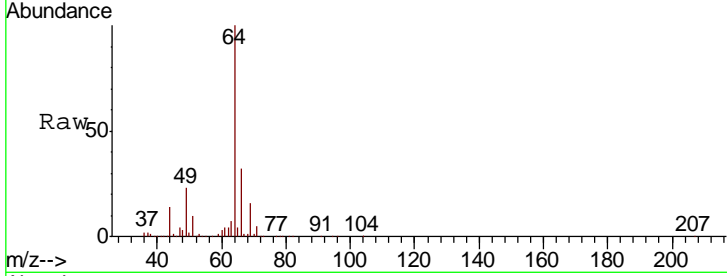




#8
 Chloroethane
 Concen: 54.020 ug/L
 RT: 1.58 min Scan# 214
 Delta R.T. -0.01 min
 Lab File: VV007382.D
 Acq: 05 Sep 2018 14:06

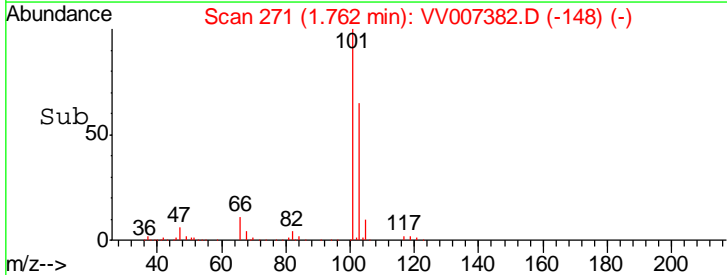
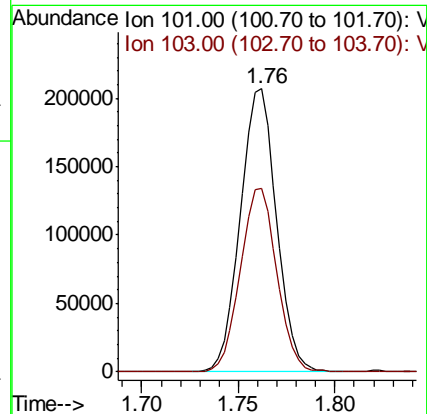
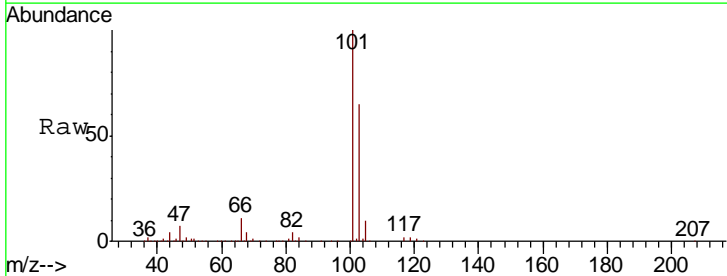
Instrument :
 MSVOA_V
 ClientSampled :
 VSTD05067

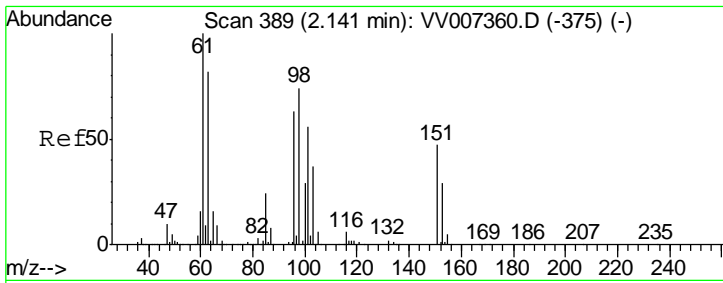
Tgt Ion: 64 Resp: 117843
 Ion Ratio Lower Upper
 64 100
 66 32.1 22.6 42.0



#9
 Trichlorofluoromethane
 Concen: 49.980 ug/L
 RT: 1.76 min Scan# 271
 Delta R.T. -0.00 min
 Lab File: VV007382.D
 Acq: 05 Sep 2018 14:06

Tgt Ion: 101 Resp: 268960
 Ion Ratio Lower Upper
 101 100
 103 65.3 51.8 77.8

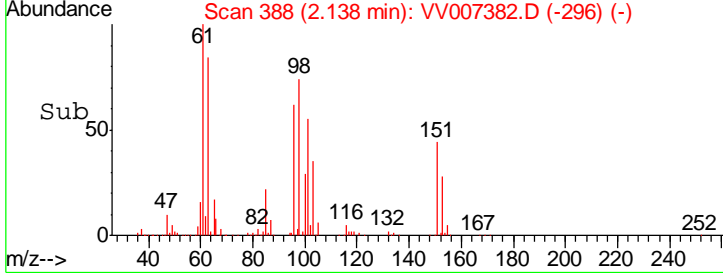
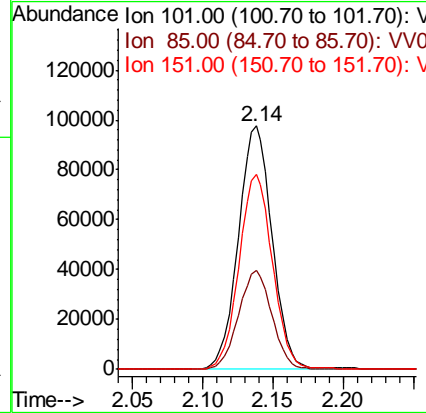
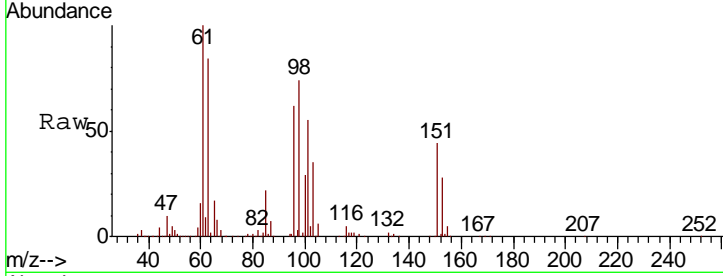




#10
 1,1,2-Trichloro-1,2,2-trifluoroethane
 Concen: 48.860 ug/L
 RT: 2.14 min Scan# 388
 Delta R.T. -0.00 min
 Lab File: VV007382.D
 Acq: 05 Sep 2018 14:06

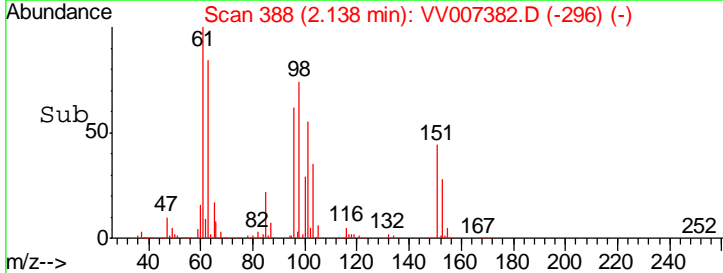
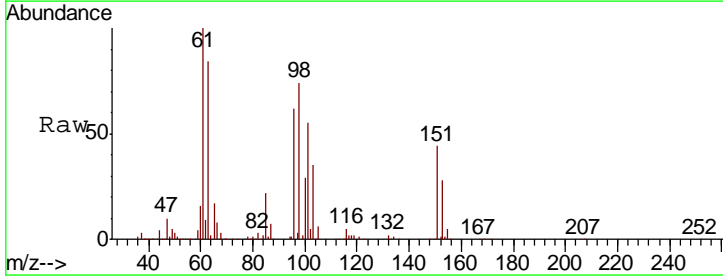
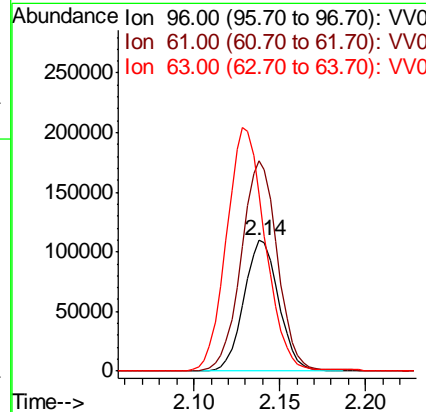
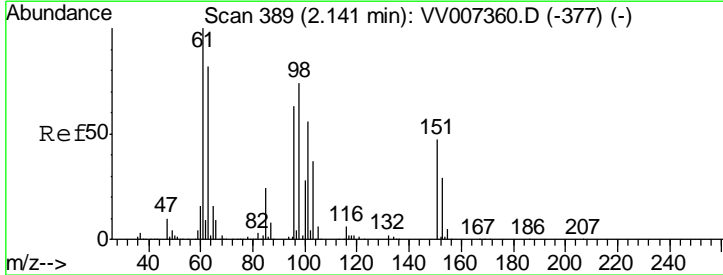
Instrument :
 MSVOA_V
ClientSampled :
 VSTD05067

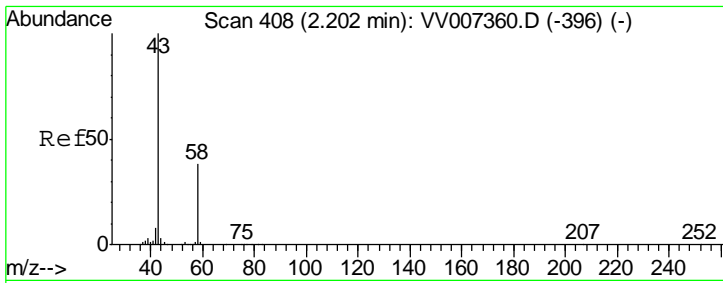
Tgt Ion	Resp	Lower	Upper
101	163247		
101	100		
85	40.2	32.7	49.1
151	79.7	64.5	96.7



#12
 1,1-Dichloroethene
 Concen: 49.086 ug/L
 RT: 2.14 min Scan# 388
 Delta R.T. -0.00 min
 Lab File: VV007382.D
 Acq: 05 Sep 2018 14:06

Tgt Ion	Resp	Lower	Upper
96	154609		
96	100		
61	160.7	108.6	201.8
63	135.5	81.5	151.3

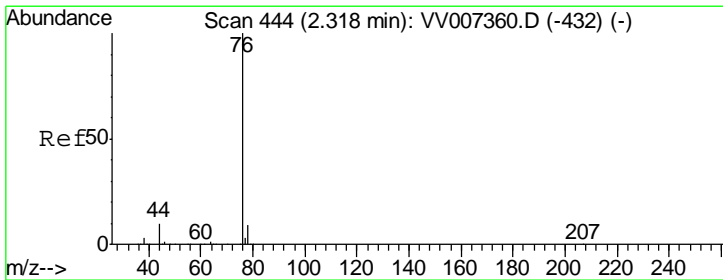
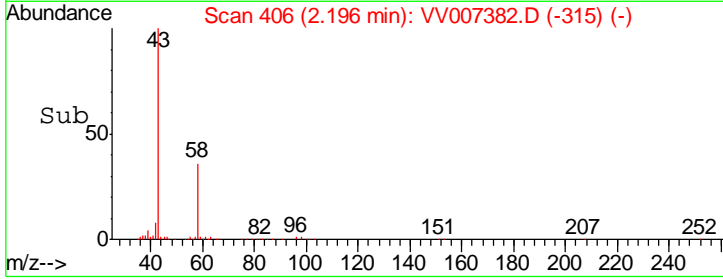
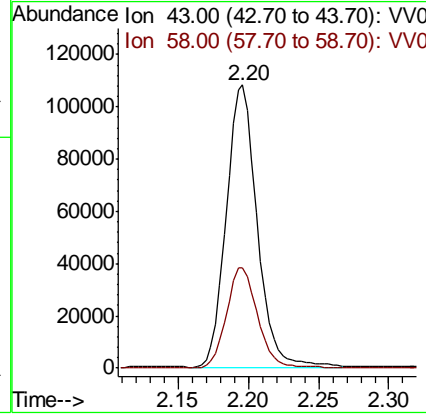
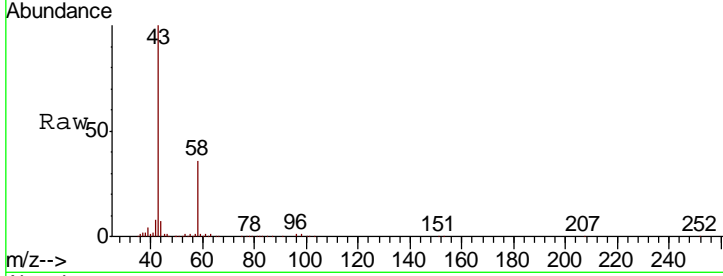




#13
 Acetone
 Concen: 95.791 ug/L
 RT: 2.20 min Scan# 406
 Delta R.T. -0.01 min
 Lab File: VV007382.D
 Acq: 05 Sep 2018 14:06

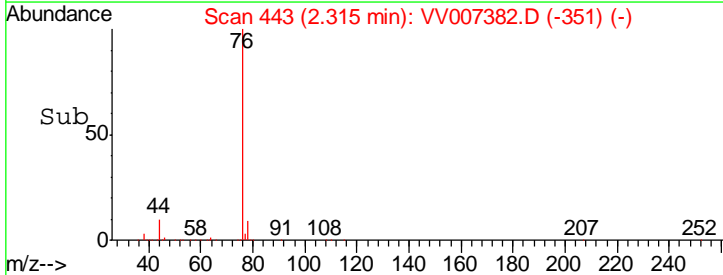
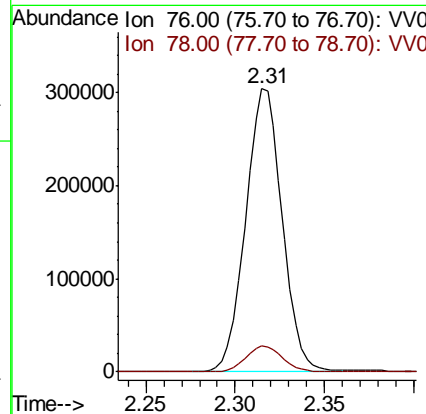
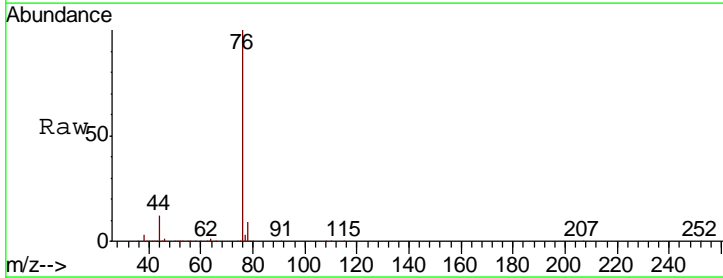
Instrument : MSVOA_V
 ClientSampled : VSTD05067

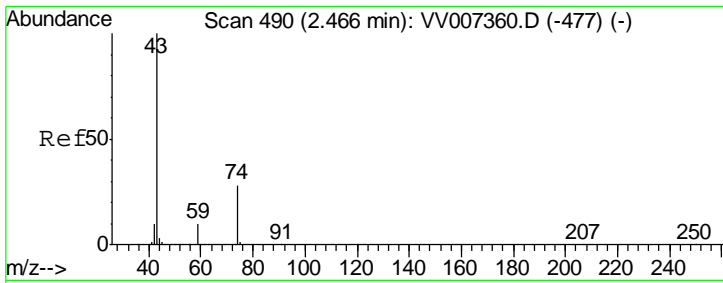
Tgt Ion	Resp	Lower	Upper
43	165059		
58	36.1	0.0	71.2



#14
 Carbon disulfide
 Concen: 48.755 ug/L
 RT: 2.31 min Scan# 443
 Delta R.T. -0.00 min
 Lab File: VV007382.D
 Acq: 05 Sep 2018 14:06

Tgt Ion	Resp	Lower	Upper
76	435135		
78	9.1	7.1	10.7

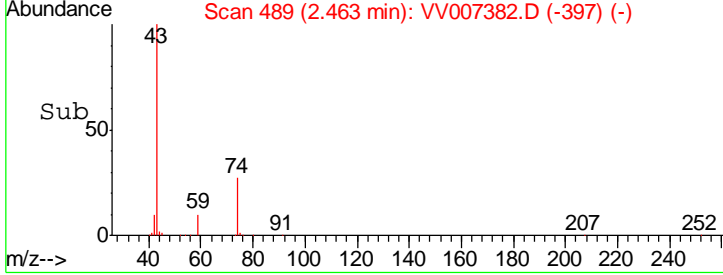
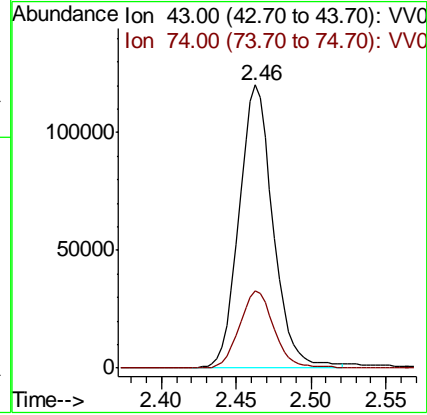
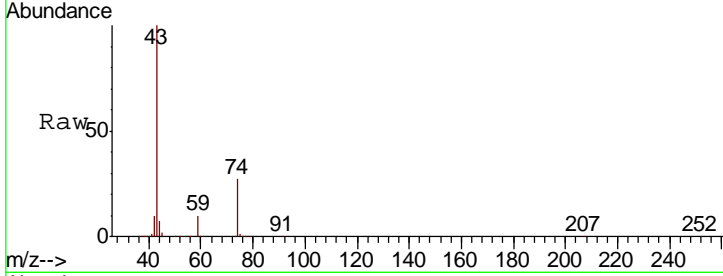




#15
 Methyl Acetate
 Concen: 50.230 ug/L
 RT: 2.46 min Scan# 489
 Delta R.T. -0.00 min
 Lab File: VV007382.D
 Acq: 05 Sep 2018 14:06

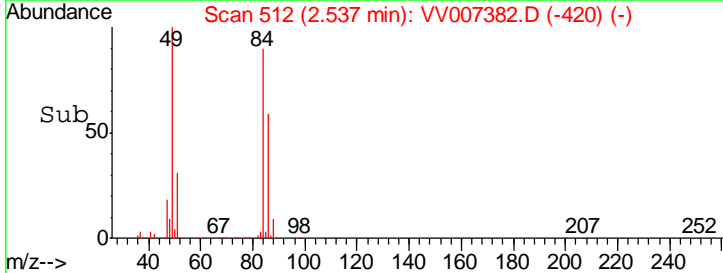
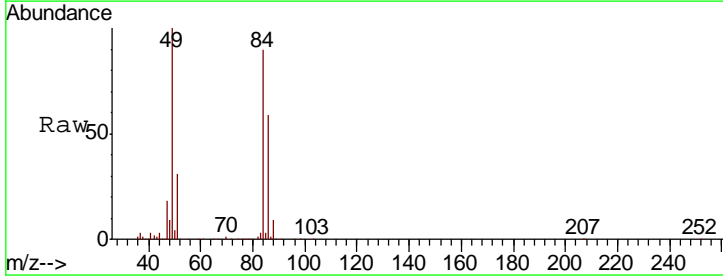
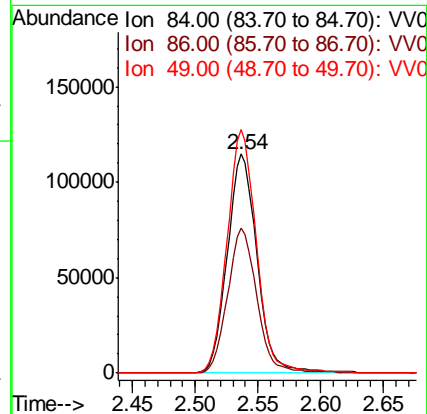
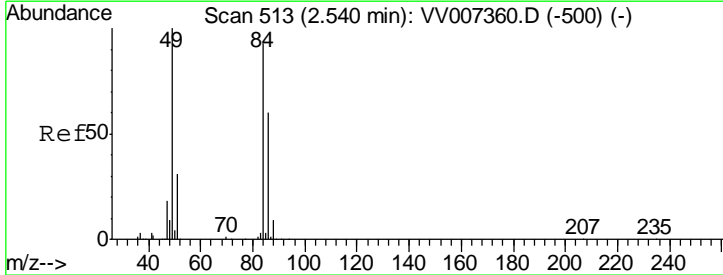
Instrument :
 MSVOA_V
ClientSampled :
 VSTD05067

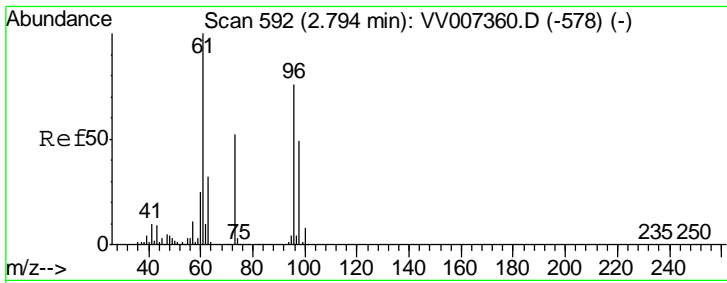
Tgt Ion	Resp	Lower	Upper
43	188540		
74	27.7	21.5	32.3



#16
 Methylene chloride
 Concen: 50.383 ug/L
 RT: 2.54 min Scan# 512
 Delta R.T. -0.00 min
 Lab File: VV007382.D
 Acq: 05 Sep 2018 14:06

Tgt Ion	Resp	Lower	Upper
84	188716		
86	66.0	45.3	84.1
49	111.1	75.6	140.4

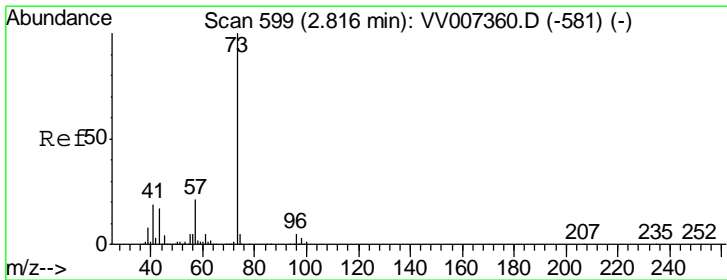
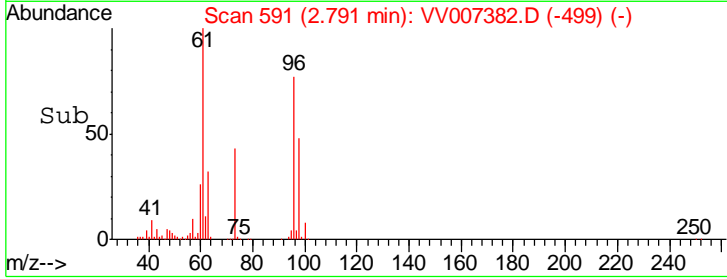
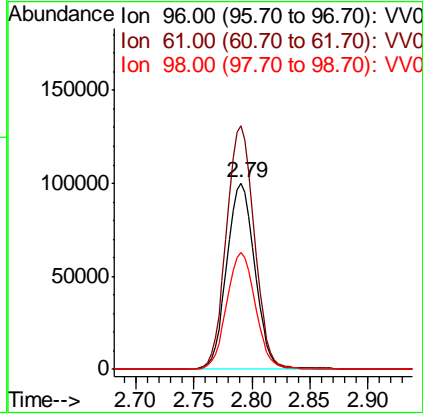
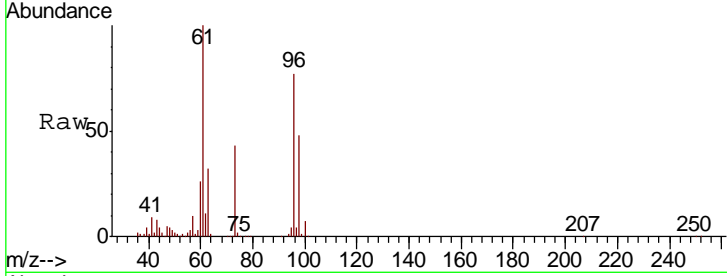




#17
 trans-1,2-Dichloroethene
 Concen: 48.777 ug/L
 RT: 2.79 min Scan# 591
 Delta R.T. -0.00 min
 Lab File: VV007382.D
 Acq: 05 Sep 2018 14:06

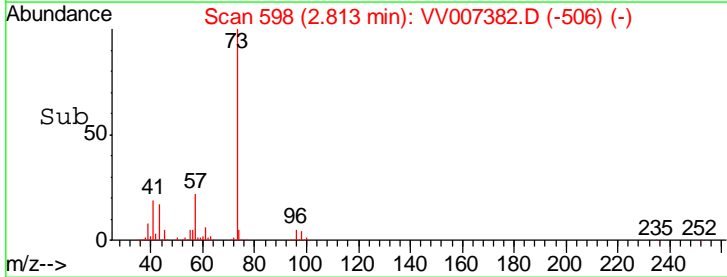
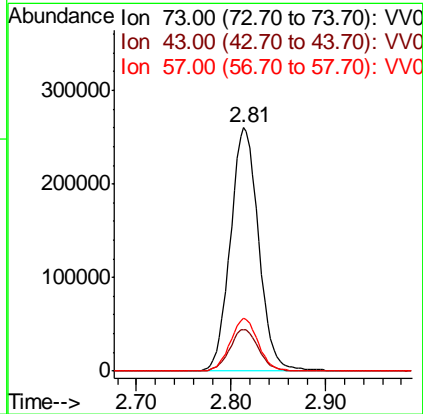
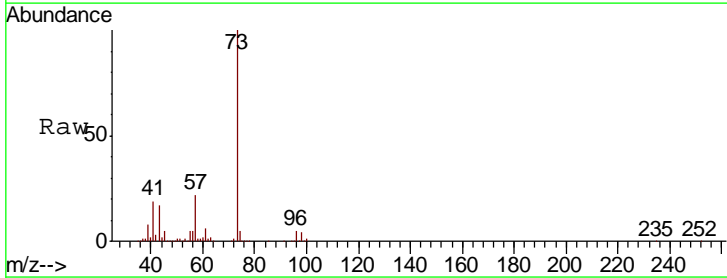
Instrument : MSVOA_V
 ClientSampled : VSTD05067

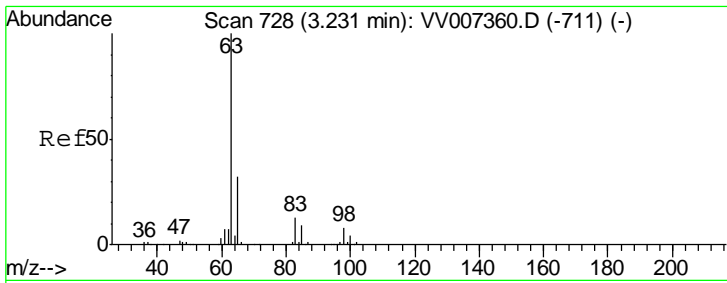
Tgt Ion	Resp	Lower	Upper
96	167602		
61	130.5	93.1	172.9
98	62.8	44.9	83.5



#18
 Methyl tert-butyl Ether
 Concen: 50.259 ug/L
 RT: 2.81 min Scan# 598
 Delta R.T. -0.00 min
 Lab File: VV007382.D
 Acq: 05 Sep 2018 14:06

Tgt Ion	Resp	Lower	Upper
73	540846		
43	17.2	13.4	20.2
57	21.4	17.0	25.4

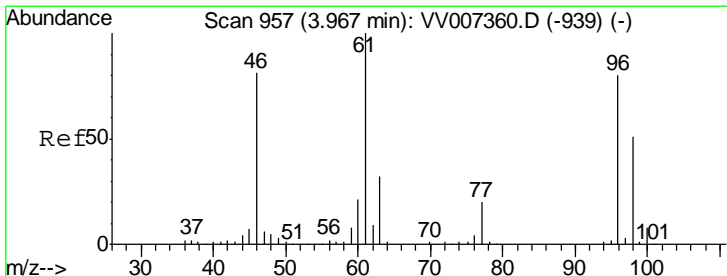
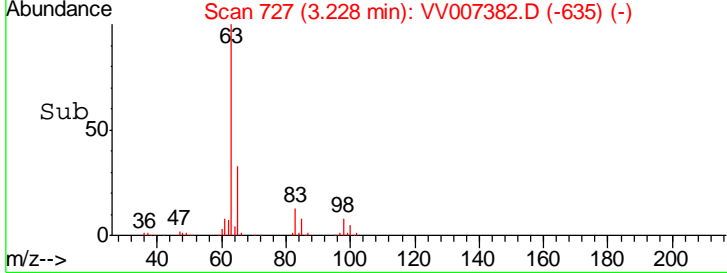
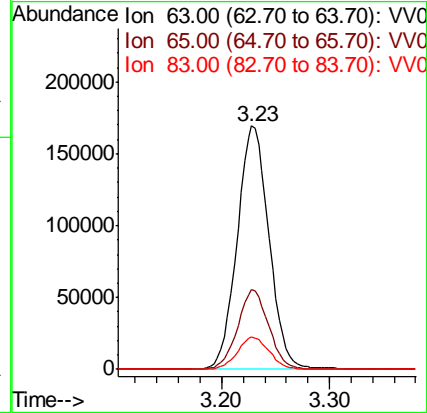
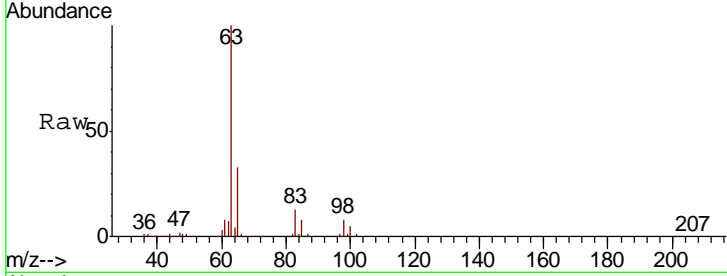




#19
 1,1-Dichloroethane
 Concen: 49.003 ug/L
 RT: 3.23 min Scan# 727
 Delta R.T. -0.00 min
 Lab File: VV007382.D
 Acq: 05 Sep 2018 14:06

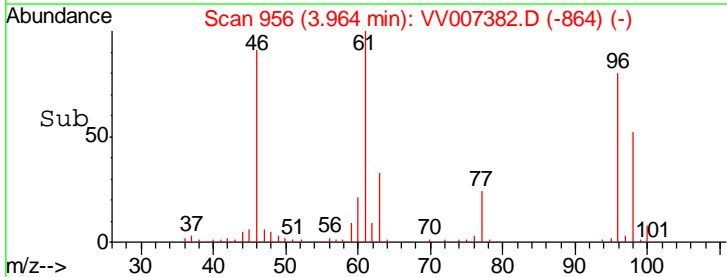
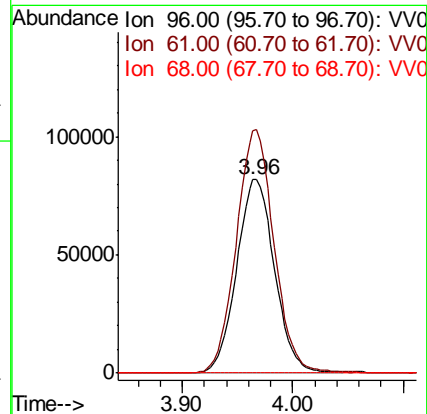
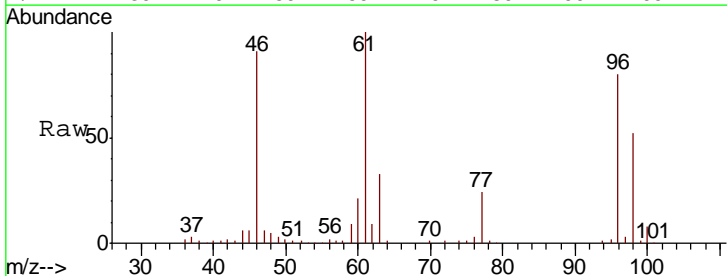
Instrument : MSVOA_V
 ClientSampled : VSTD05067

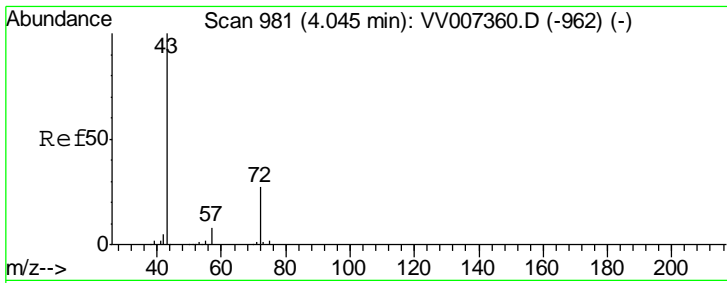
Tgt Ion	Resp	Lower	Upper
63	348724		
65	32.7	22.5	41.9
83	13.3	9.0	16.8



#20
 cis-1,2-Dichloroethene
 Concen: 49.353 ug/L
 RT: 3.96 min Scan# 956
 Delta R.T. -0.00 min
 Lab File: VV007382.D
 Acq: 05 Sep 2018 14:06

Tgt Ion	Resp	Lower	Upper
96	195143		
61	125.2	86.8	161.2
68	0.0	0.0	0.0

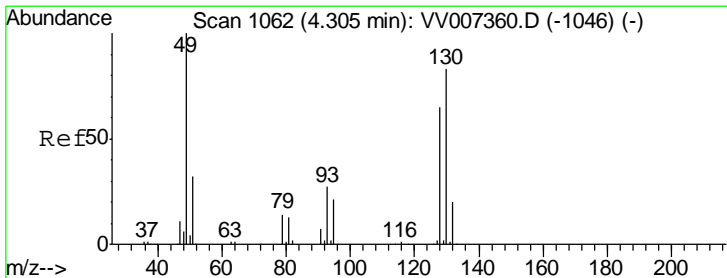
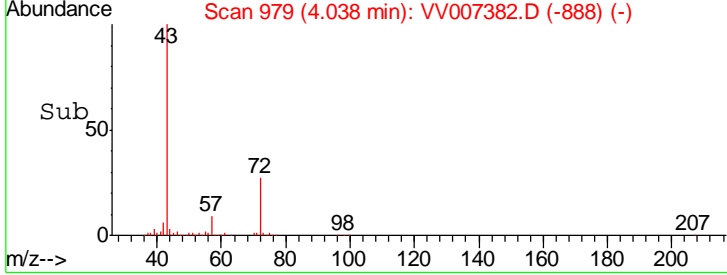
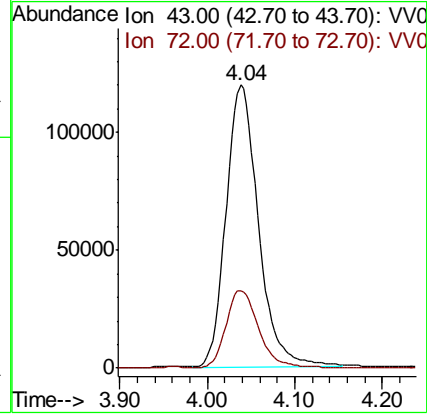
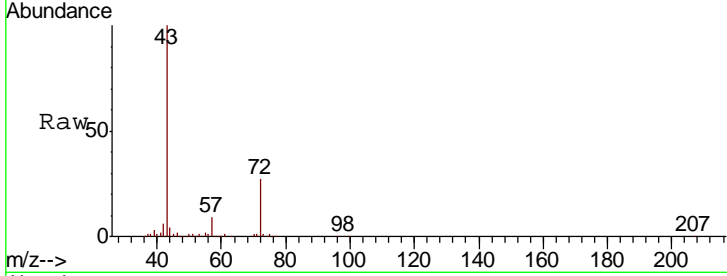




#22
 2-Butanone
 Concen: 106.680 ug/L
 RT: 4.04 min Scan# 979
 Delta R.T. -0.01 min
 Lab File: VV007382.D
 Acq: 05 Sep 2018 14:06

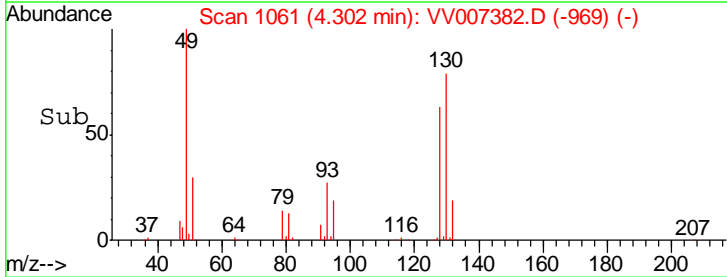
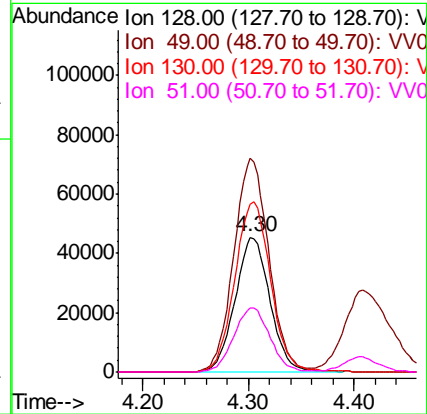
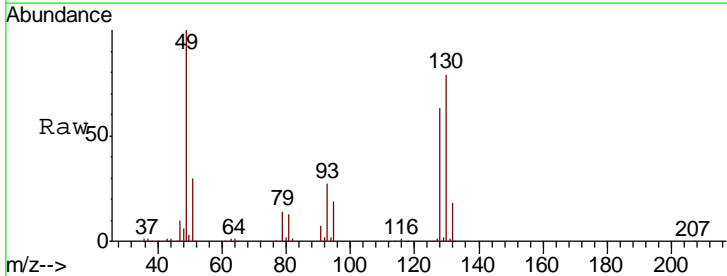
Instrument :
 MSVOA_V
 ClientSampled :
 VSTD05067

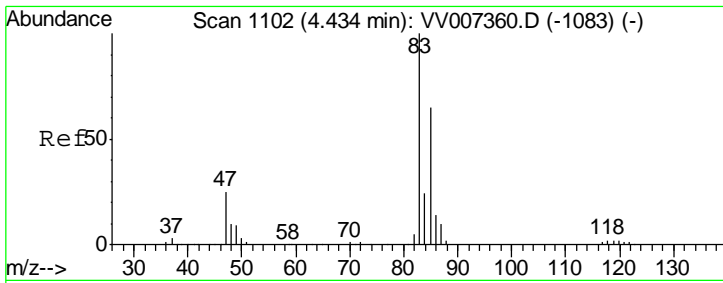
Tgt Ion	Resp	Lower	Upper
43	307865		
72	27.3	13.8	41.3



#23
 Bromochloromethane
 Concen: 50.495 ug/L
 RT: 4.30 min Scan# 1061
 Delta R.T. -0.00 min
 Lab File: VV007382.D
 Acq: 05 Sep 2018 14:06

Tgt Ion	Resp	Lower	Upper
128	104465		
49	158.9	111.2	206.4
130	125.1	89.1	165.5
51	47.5	40.1	60.1

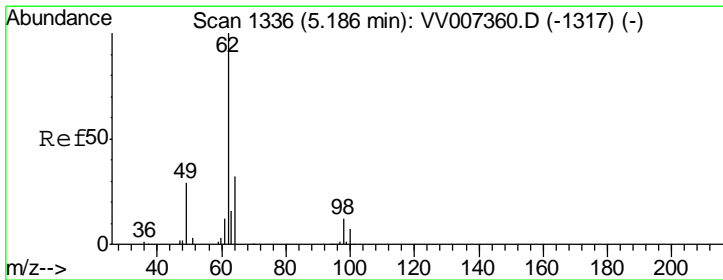
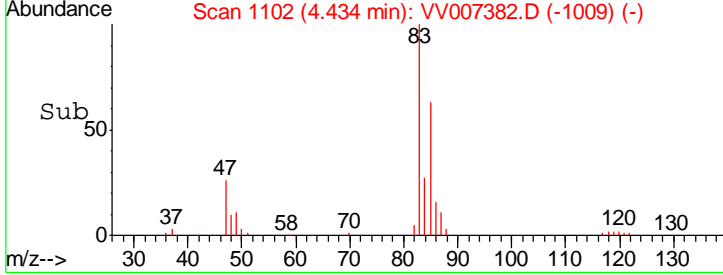
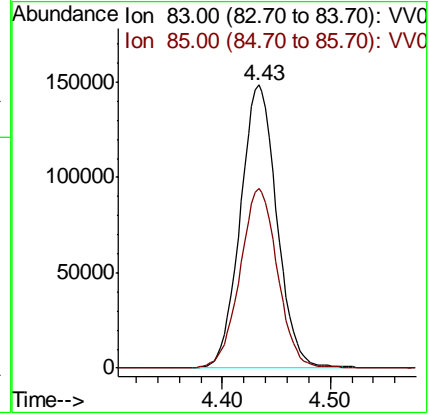
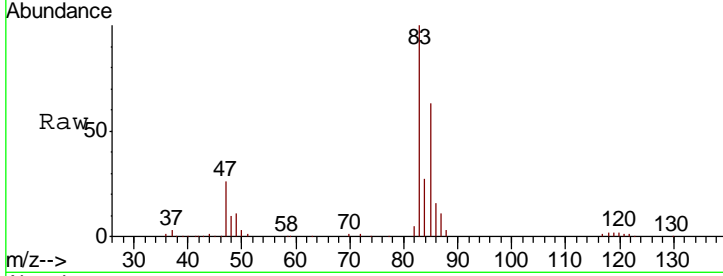




#25
 Chloroform
 Concen: 49.945 ug/L
 RT: 4.43 min Scan# 1102
 Delta R.T. 0.00 min
 Lab File: VV007382.D
 Acq: 05 Sep 2018 14:06

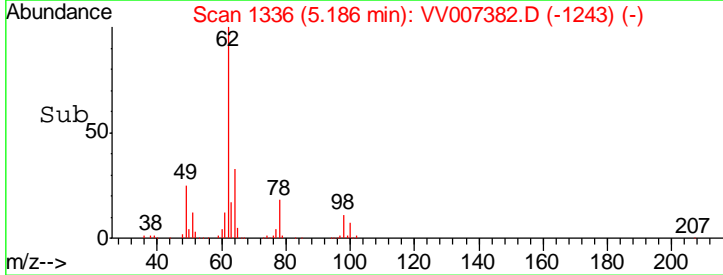
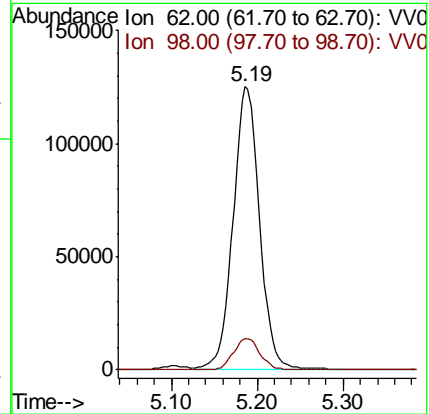
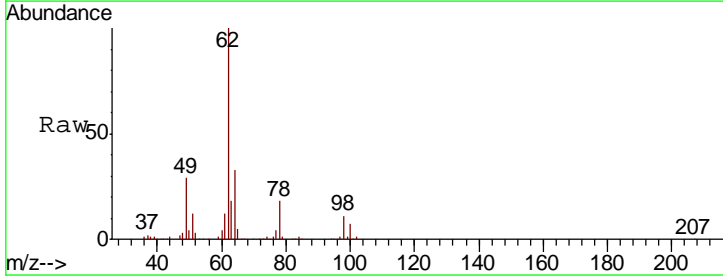
Instrument :
 MSVOA_V
ClientSampled :
 VSTD05067

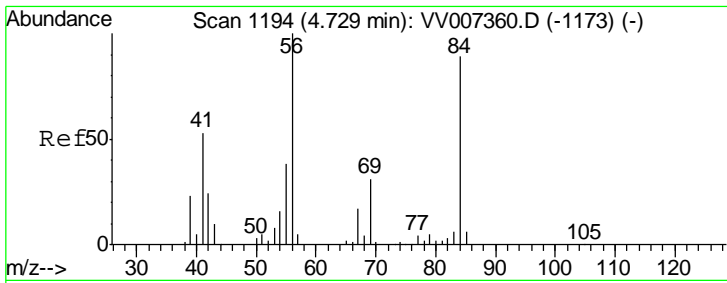
Tgt Ion: 83 Resp: 349843
 Ion Ratio Lower Upper
 83 100
 85 63.4 45.1 83.9



#27
 1,2-Dichloroethane
 Concen: 50.682 ug/L
 RT: 5.19 min Scan# 1336
 Delta R.T. 0.00 min
 Lab File: VV007382.D
 Acq: 05 Sep 2018 14:06

Tgt Ion: 62 Resp: 265818
 Ion Ratio Lower Upper
 62 100
 98 11.1 8.6 13.0

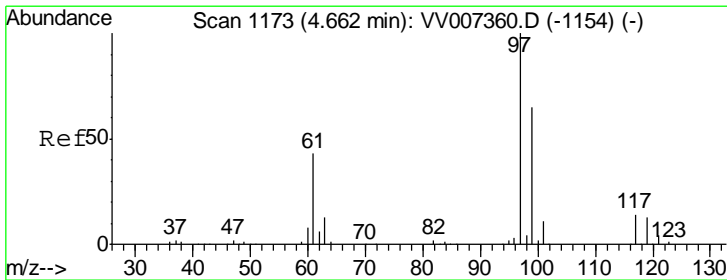
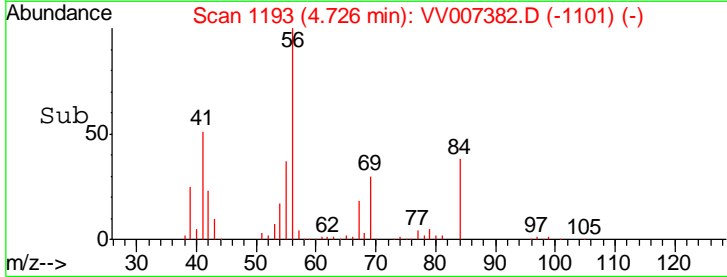
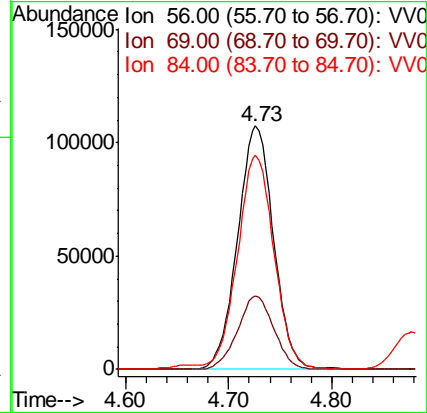
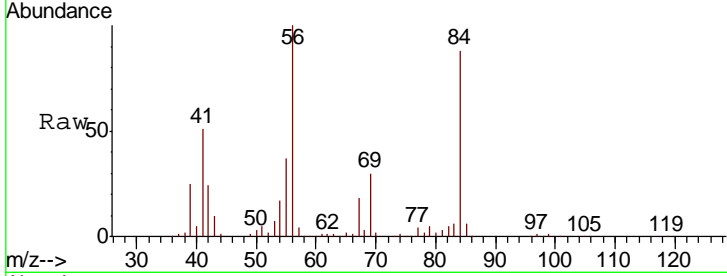




#29
 Cyclohexane
 Concen: 45.932 ug/L
 RT: 4.73 min Scan# 1193
 Delta R.T. -0.00 min
 Lab File: VV007382.D
 Acq: 05 Sep 2018 14:06

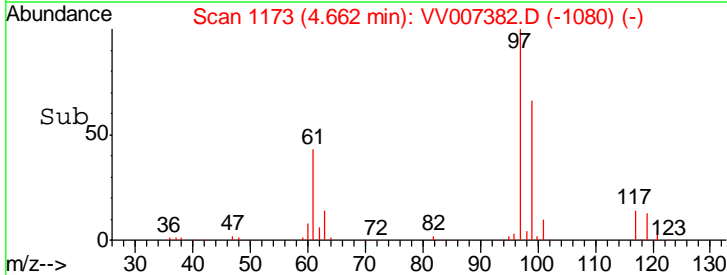
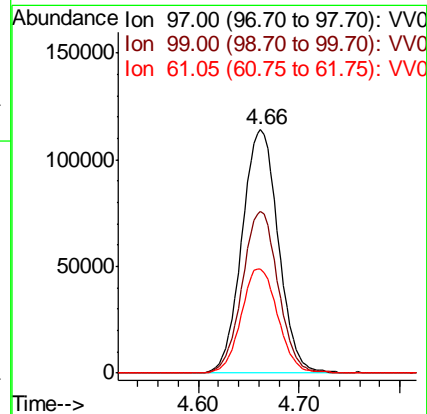
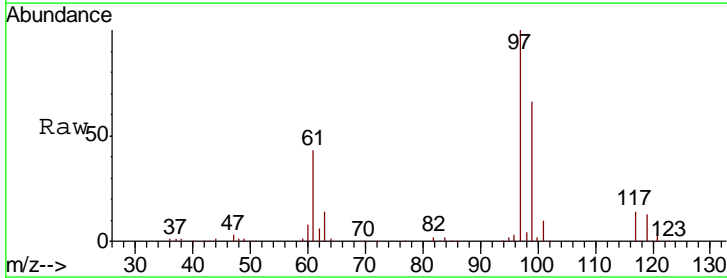
Instrument :
 MSVOA_V
 ClientSampled :
 VSTD05067

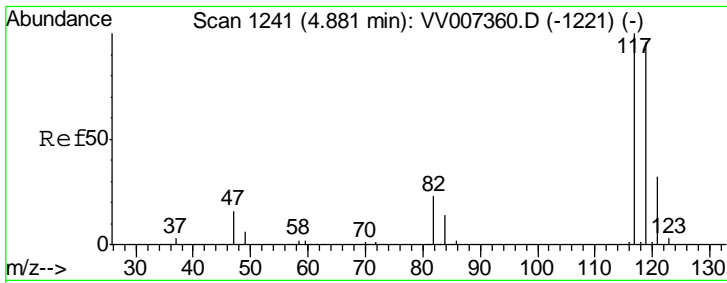
Tgt Ion	Resp	Lower	Upper
56	100		
69	30.6	24.5	36.7
84	89.4	70.6	105.8



#30
 1,1,1-Trichloroethane
 Concen: 45.747 ug/L
 RT: 4.66 min Scan# 1173
 Delta R.T. 0.00 min
 Lab File: VV007382.D
 Acq: 05 Sep 2018 14:06

Tgt Ion	Resp	Lower	Upper
97	100		
99	65.7	52.1	78.1
61	43.3	34.6	51.8

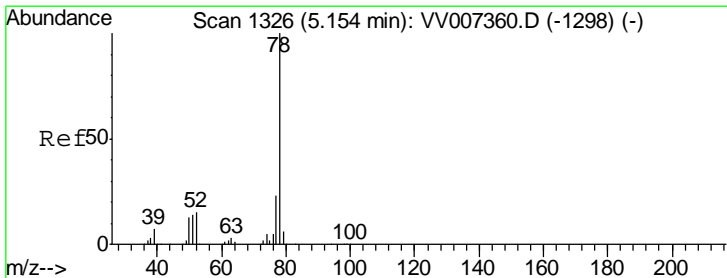
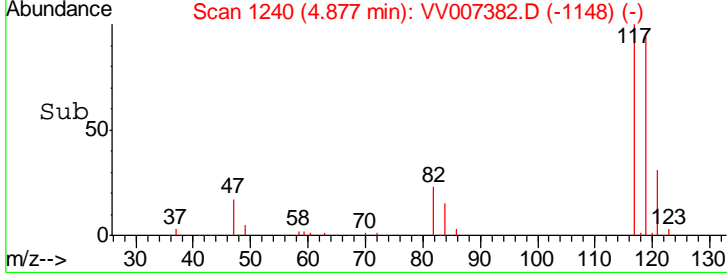
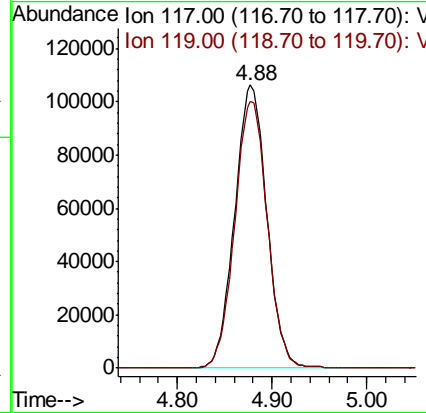
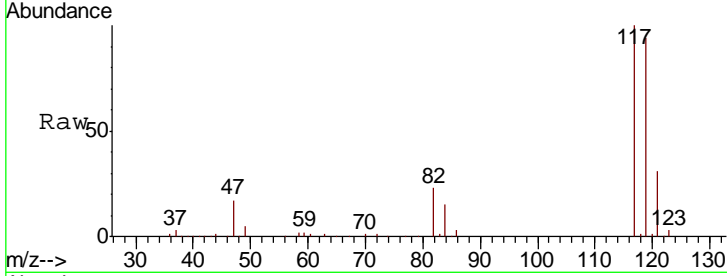




#31
 Carbon tetrachloride
 Concen: 46.500 ug/L
 RT: 4.88 min Scan# 1240
 Delta R.T. -0.00 min
 Lab File: VV007382.D
 Acq: 05 Sep 2018 14:06

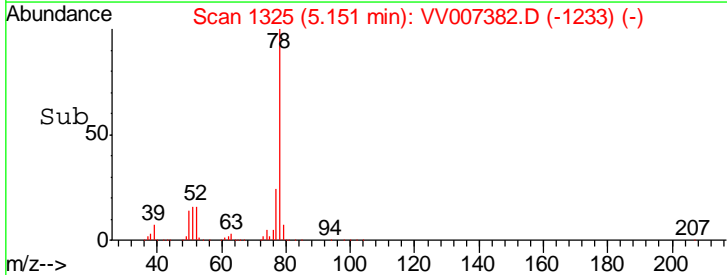
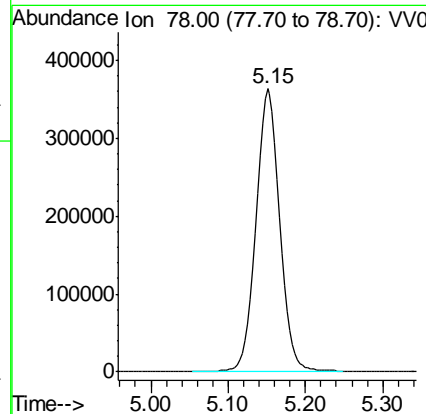
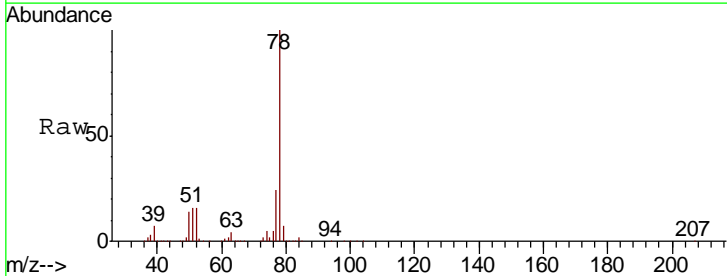
Instrument : MSVOA_V
 ClientSampleId : VSTD05067

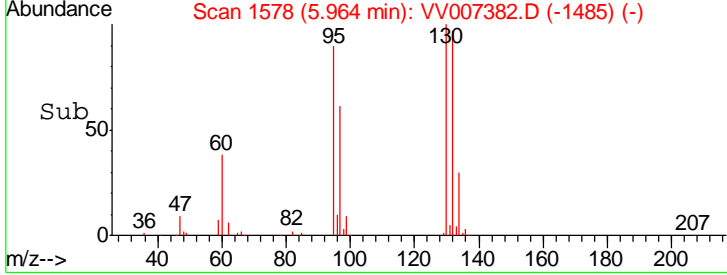
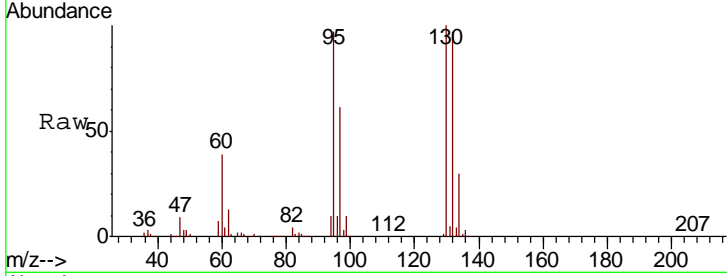
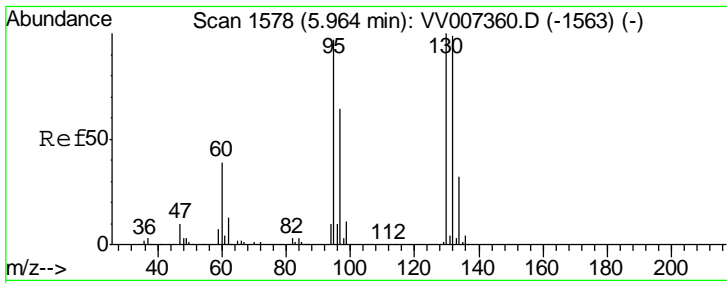
Tgt Ion: 117 Resp: 250794
 Ion Ratio Lower Upper
 117 100
 119 95.4 76.7 115.1



#33
 Benzene
 Concen: 48.291 ug/L
 RT: 5.15 min Scan# 1325
 Delta R.T. -0.00 min
 Lab File: VV007382.D
 Acq: 05 Sep 2018 14:06

Tgt Ion: 78 Resp: 788107



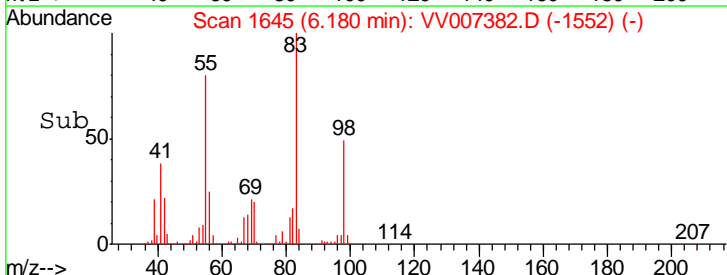
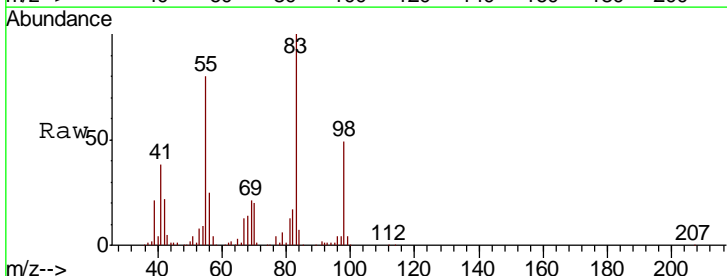
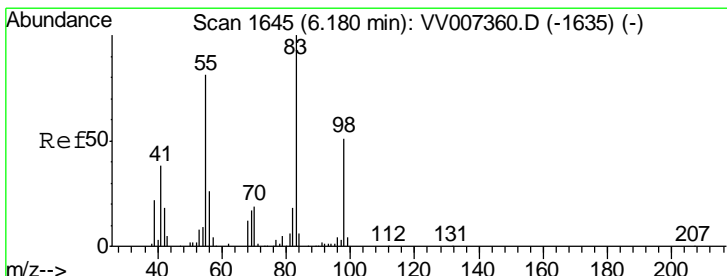
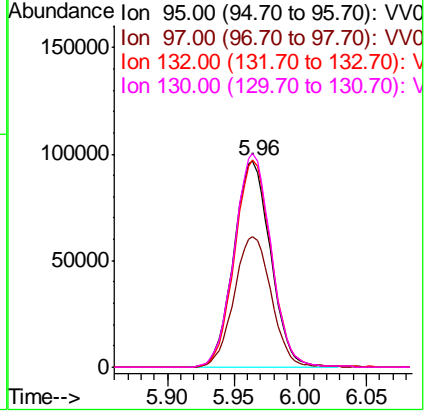


#34
 Trichloroethene
 Concen: 47.067 ug/L
 RT: 5.96 min Scan# 1578
 Delta R.T. 0.00 min
 Lab File: VV007382.D
 Acq: 05 Sep 2018 14:06

Instrument :
 MSVOA_V
 ClientSampled :
 VSTD05067

Tgt Ion: 95 Resp: 187515

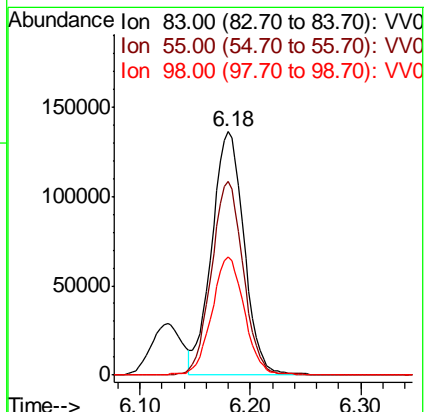
Ion	Ratio	Lower	Upper
95	100		
97	63.3	46.1	85.7
132	100.2	70.8	131.6
130	103.4	73.9	137.3

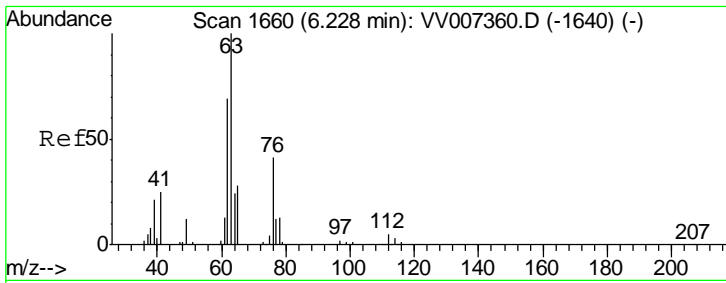


#35
 Methylcyclohexane
 Concen: 46.588 ug/L
 RT: 6.18 min Scan# 1645
 Delta R.T. -0.00 min
 Lab File: VV007382.D
 Acq: 05 Sep 2018 14:06

Tgt Ion: 83 Resp: 276771

Ion	Ratio	Lower	Upper
83	100		
55	78.2	63.0	94.4
98	49.0	39.0	58.6

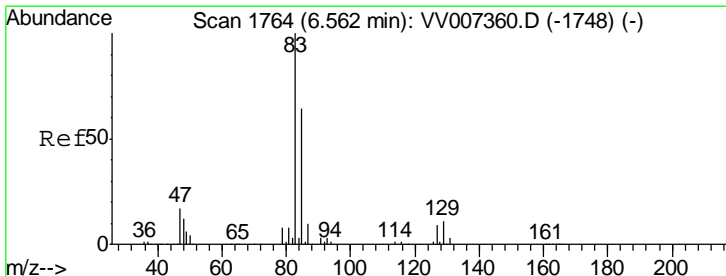
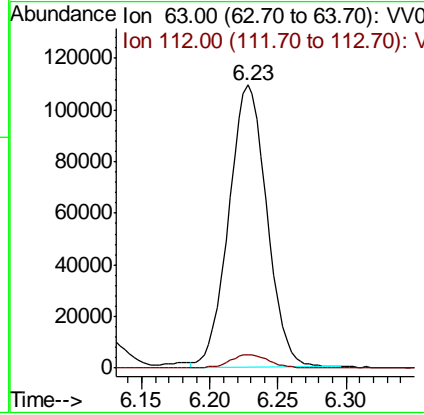
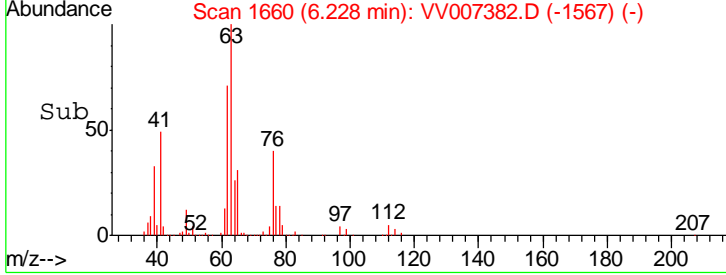
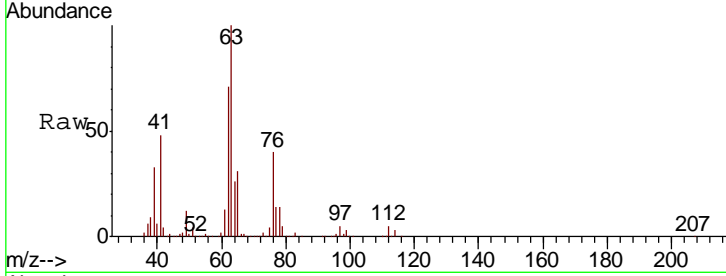




#37
 1,2-Dichloropropane
 Concen: 47.225 ug/L
 RT: 6.23 min Scan# 1660
 Delta R.T. 0.00 min
 Lab File: VV007382.D
 Acq: 05 Sep 2018 14:06

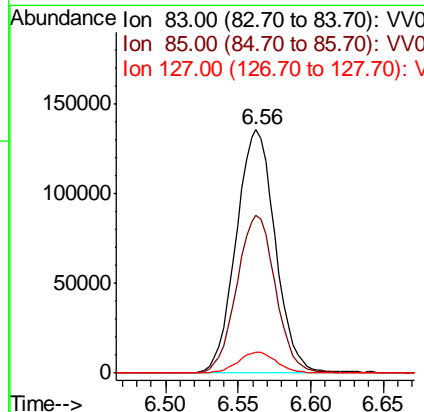
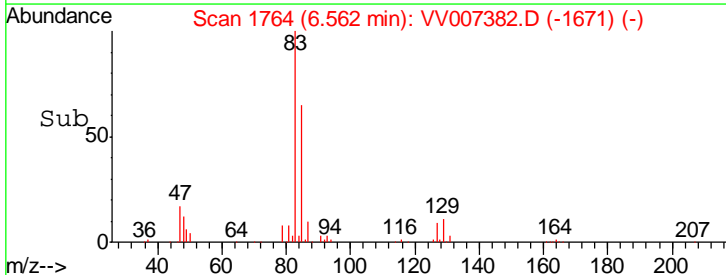
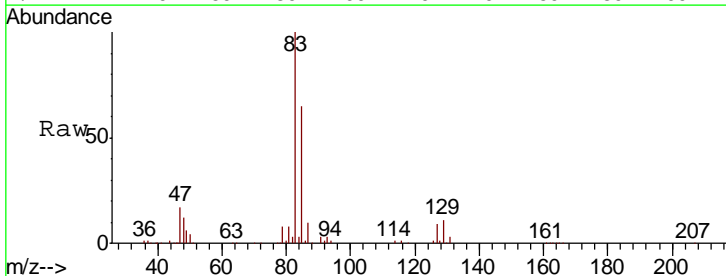
Instrument : MSVOA_V
 ClientSampled : VSTD05067

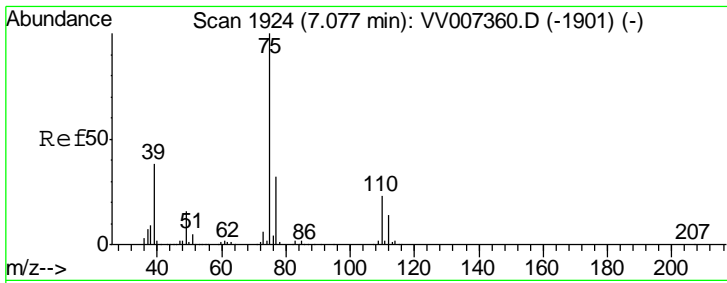
Tgt Ion	Resp	Lower	Upper
63	211803		
112	5.1	3.8	5.8



#38
 Bromodichloromethane
 Concen: 46.251 ug/L
 RT: 6.56 min Scan# 1764
 Delta R.T. 0.00 min
 Lab File: VV007382.D
 Acq: 05 Sep 2018 14:06

Tgt Ion	Resp	Lower	Upper
83	253286		
85	65.0	45.1	83.9
127	8.5	6.9	10.3

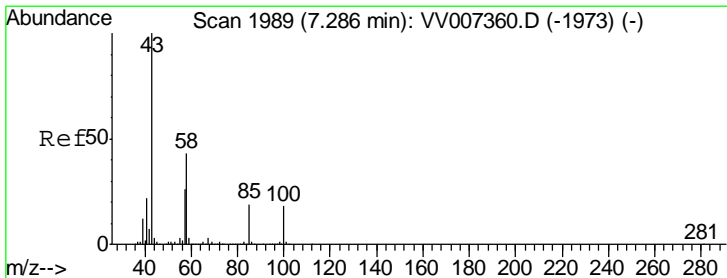
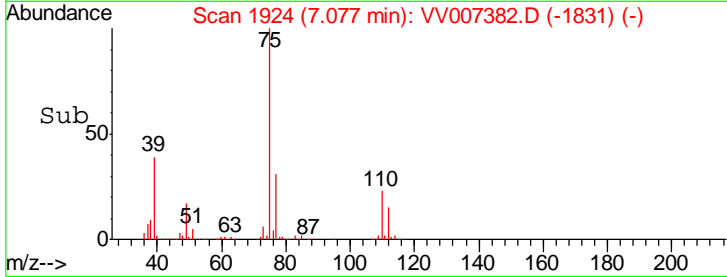
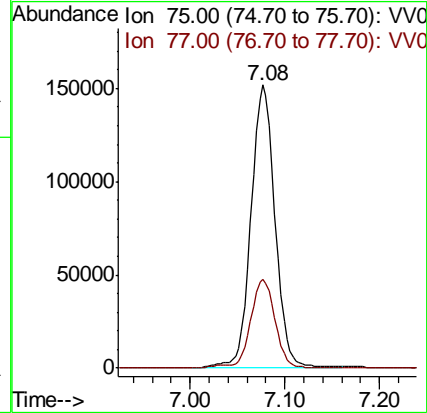
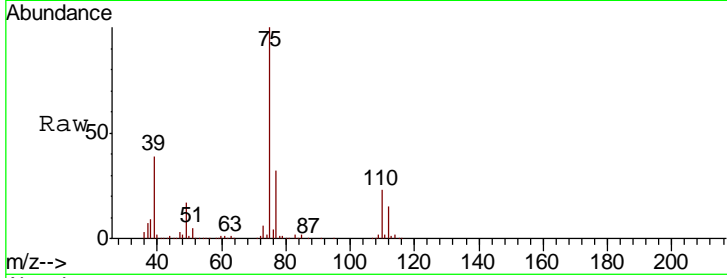




#39
 cis-1,3-Dichloropropene
 Concen: 44.657 ug/L
 RT: 7.08 min Scan# 1924
 Delta R.T. 0.00 min
 Lab File: VV007382.D
 Acq: 05 Sep 2018 14:06

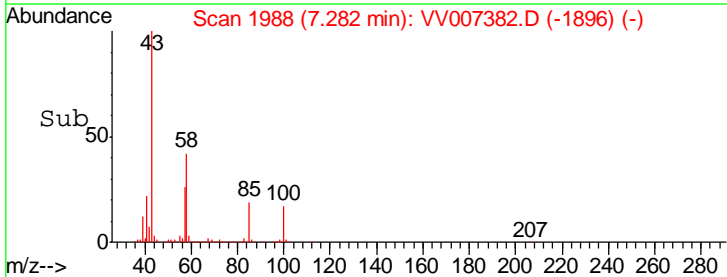
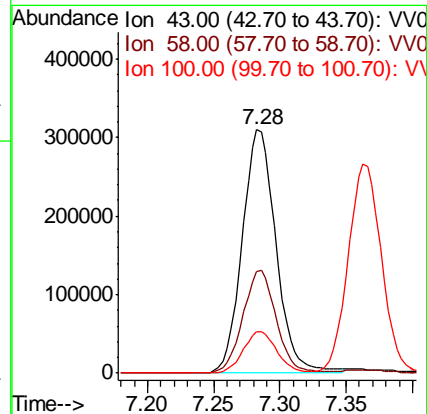
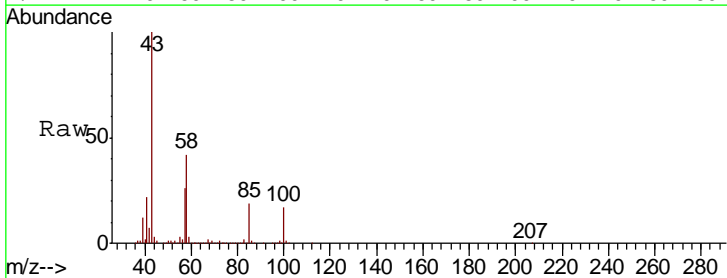
Instrument :
 MSVOA_V
 ClientSampled :
 VSTD05067

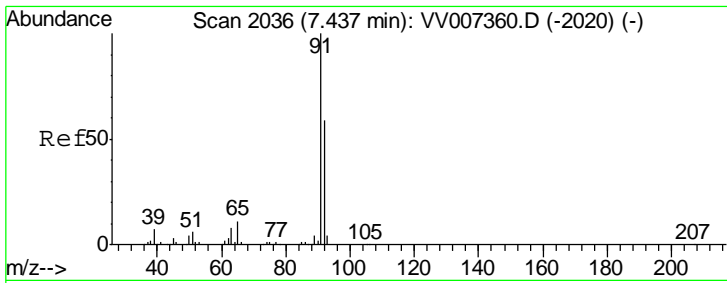
Tgt Ion: 75 Resp: 268947
 Ion Ratio Lower Upper
 75 100
 77 31.5 22.1 41.1



#40
 4-Methyl-2-pentanone
 Concen: 106.123 ug/L
 RT: 7.28 min Scan# 1988
 Delta R.T. -0.00 min
 Lab File: VV007382.D
 Acq: 05 Sep 2018 14:06

Tgt Ion: 43 Resp: 549841
 Ion Ratio Lower Upper
 43 100
 58 41.7 32.9 49.3
 100 17.0 13.3 19.9

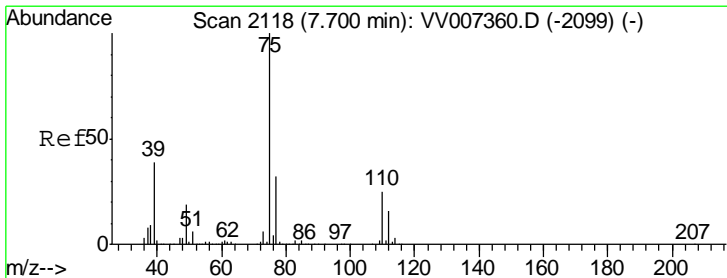
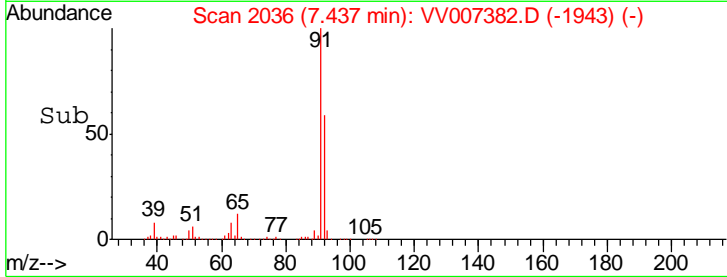
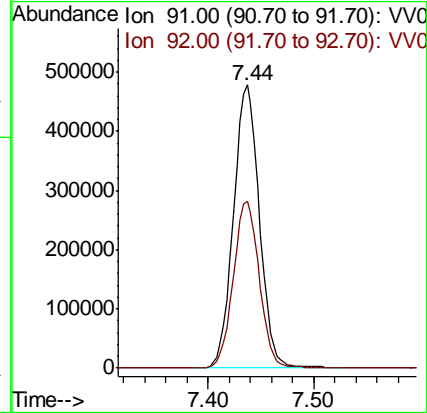
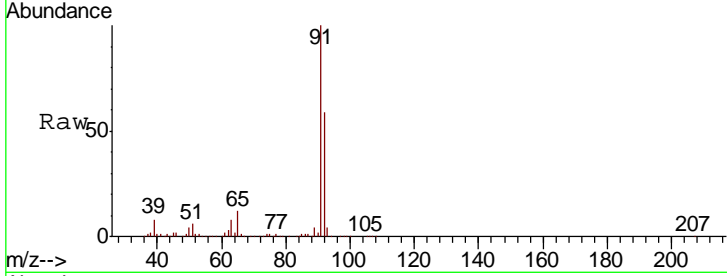




#42
 Toluene
 Concen: 51.685 ug/L
 RT: 7.44 min Scan# 2036
 Delta R.T. -0.00 min
 Lab File: VV007382.D
 Acq: 05 Sep 2018 14:06

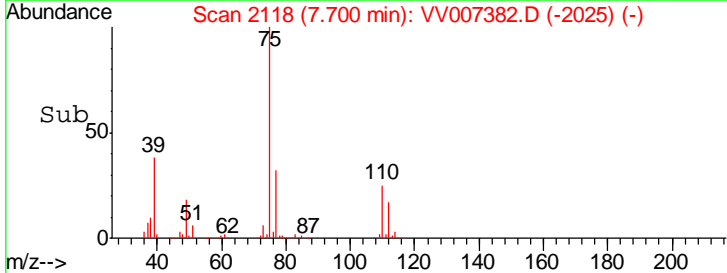
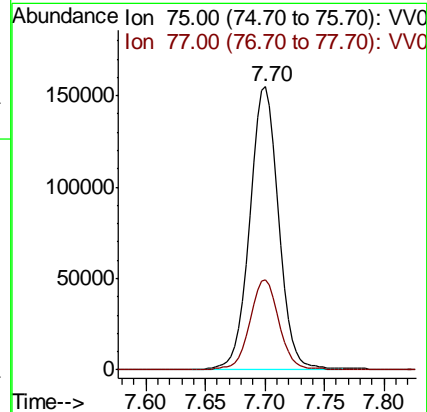
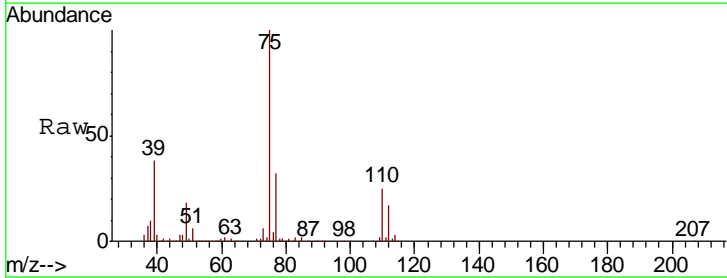
Instrument :
 MSVOA_V
 ClientSampled :
 VSTD05067

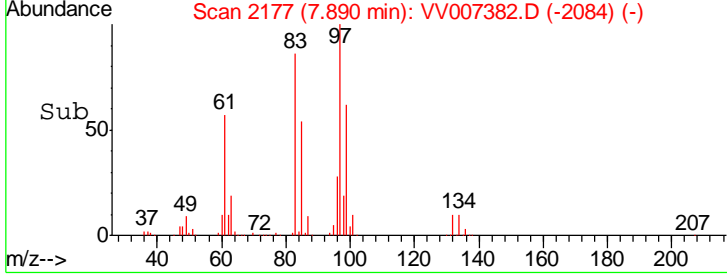
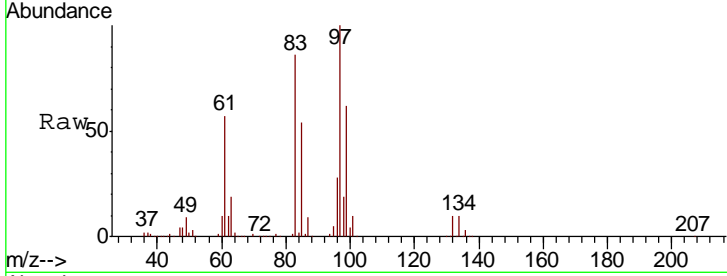
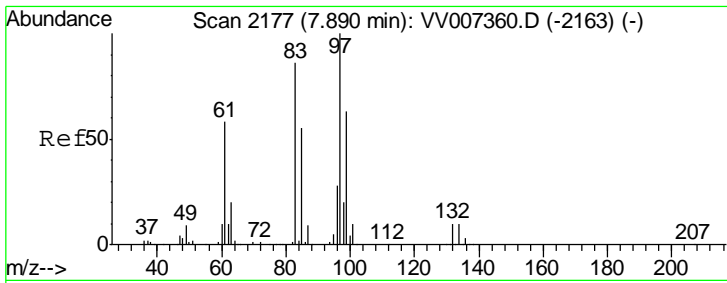
Tgt Ion: 91 Resp: 811446
 Ion Ratio Lower Upper
 91 100
 92 59.0 41.3 76.7



#44
 trans-1,3-Dichloropropene
 Concen: 46.365 ug/L
 RT: 7.70 min Scan# 2118
 Delta R.T. 0.00 min
 Lab File: VV007382.D
 Acq: 05 Sep 2018 14:06

Tgt Ion: 75 Resp: 261095
 Ion Ratio Lower Upper
 75 100
 77 32.0 22.5 41.7

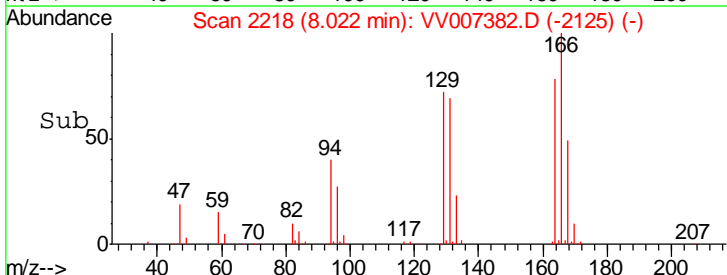
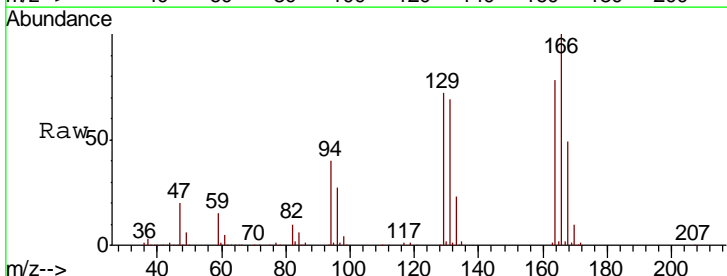
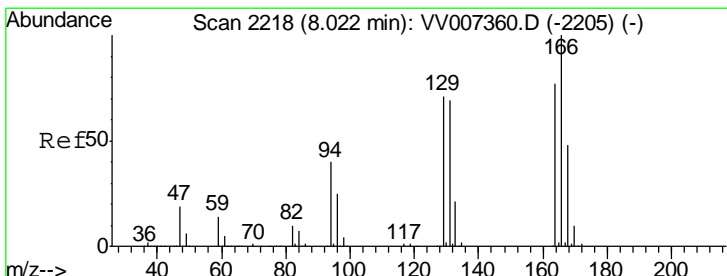
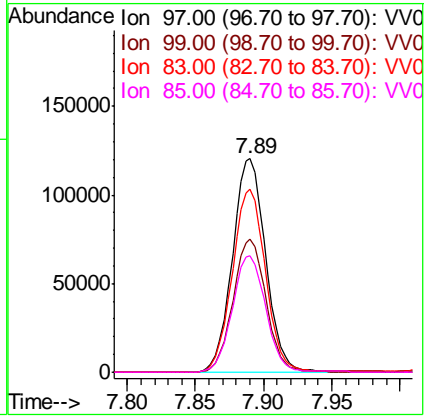




#45
 1,1,2-Trichloroethane
 Concen: 48.173 ug/L
 RT: 7.89 min Scan# 2177
 Delta R.T. 0.00 min
 Lab File: VV007382.D
 Acq: 05 Sep 2018 14:06

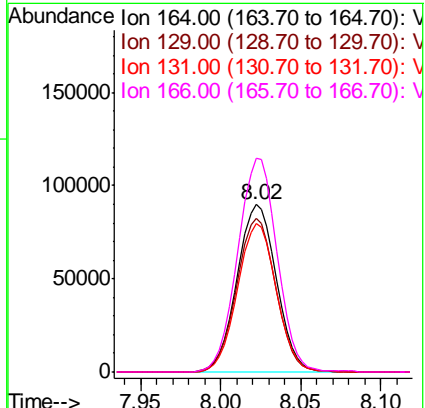
Instrument :
 MSVOA_V
 ClientSampled :
 VSTD05067

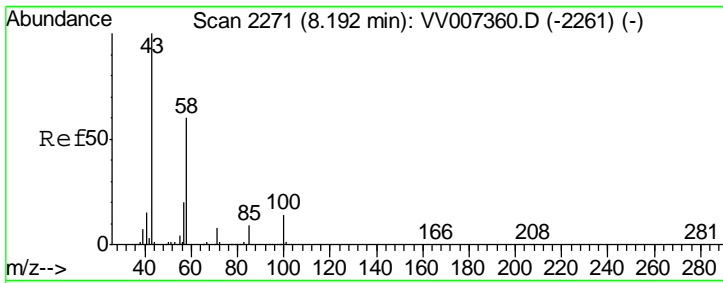
Tgt Ion	Resp	Lower	Upper
97	100		
99	62.2	44.0	81.6
83	85.7	60.1	111.5
85	54.4	38.4	71.2



#46
 Tetrachloroethene
 Concen: 47.140 ug/L
 RT: 8.02 min Scan# 2218
 Delta R.T. 0.00 min
 Lab File: VV007382.D
 Acq: 05 Sep 2018 14:06

Tgt Ion	Resp	Lower	Upper
164	100		
129	92.0	63.9	118.7
131	88.8	62.6	116.2
166	127.8	91.6	170.2

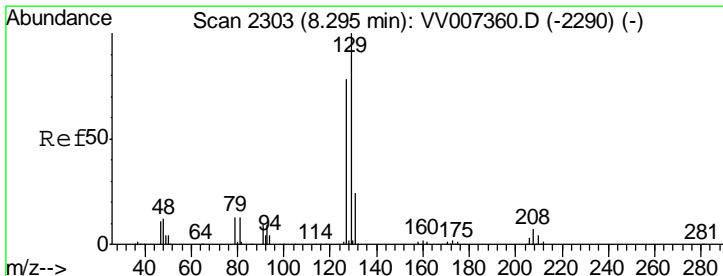
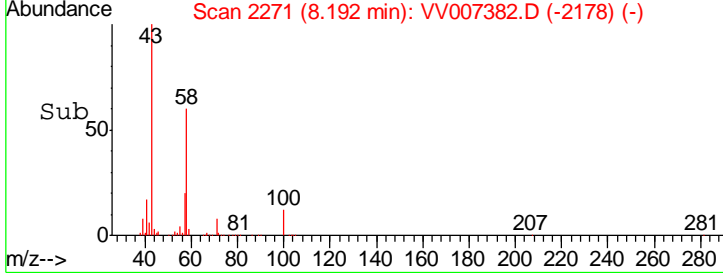
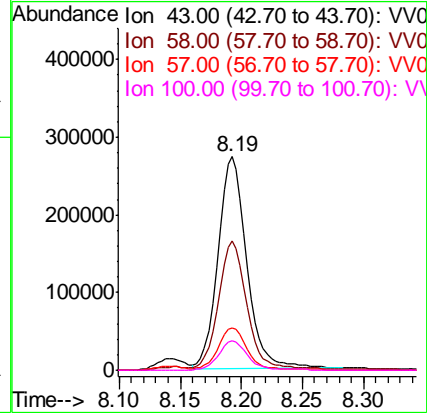
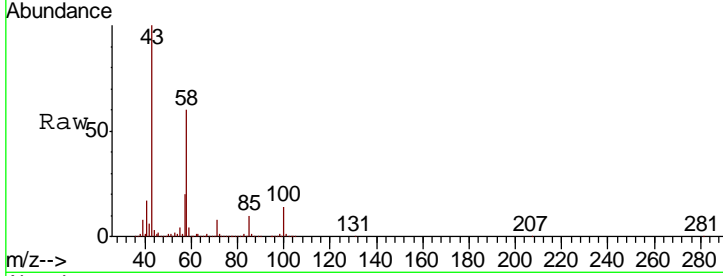




#48
 2-Hexanone
 Concen: 112.220 ug/L
 RT: 8.19 min Scan# 2271
 Delta R.T. 0.00 min
 Lab File: VV007382.D
 Acq: 05 Sep 2018 14:06

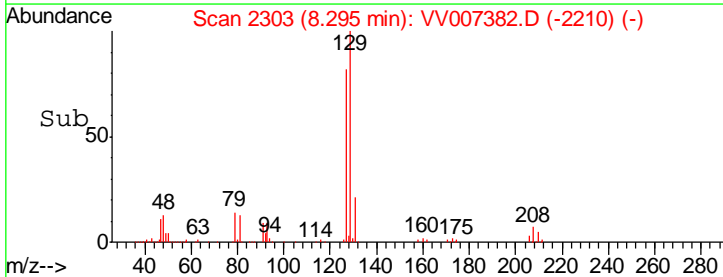
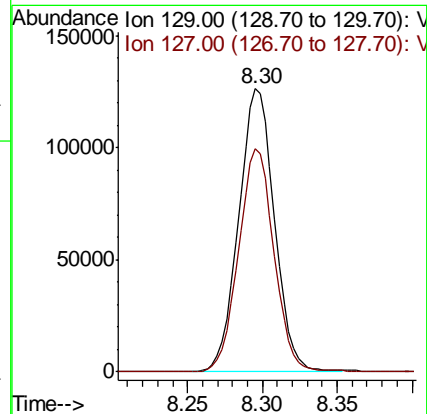
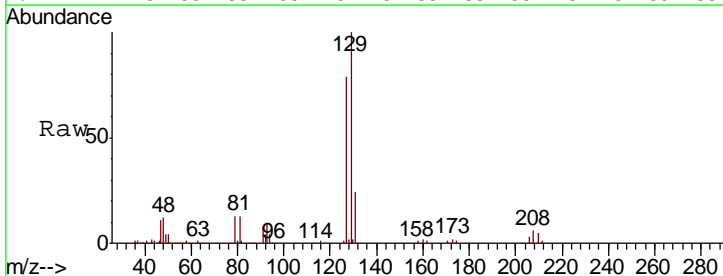
Instrument :
 MSVOA_V
 ClientSampled :
 VSTD05067

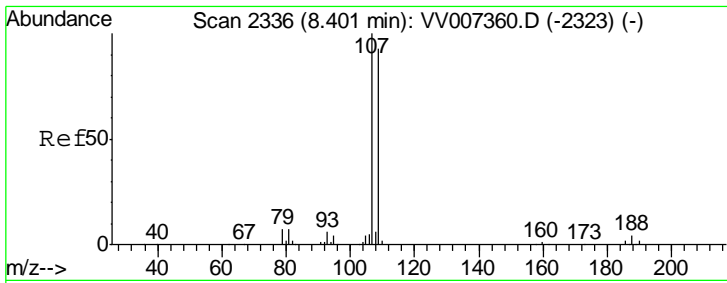
Tgt Ion	Resp	Lower	Upper
43	100		
58	61.0	48.6	72.8
57	20.1	16.2	24.2
100	13.5	11.1	16.7



#49
 Dibromochloromethane
 Concen: 48.433 ug/L
 RT: 8.30 min Scan# 2303
 Delta R.T. 0.00 min
 Lab File: VV007382.D
 Acq: 05 Sep 2018 14:06

Tgt Ion	Resp	Lower	Upper
129	100		
127	78.9	54.0	100.4

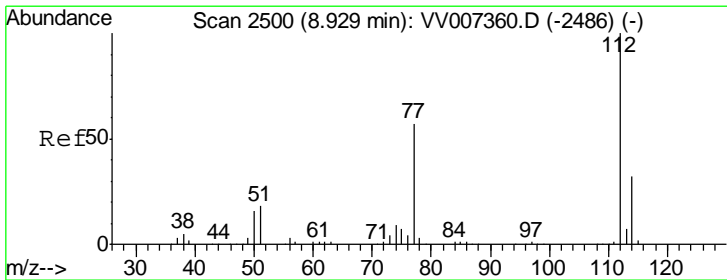
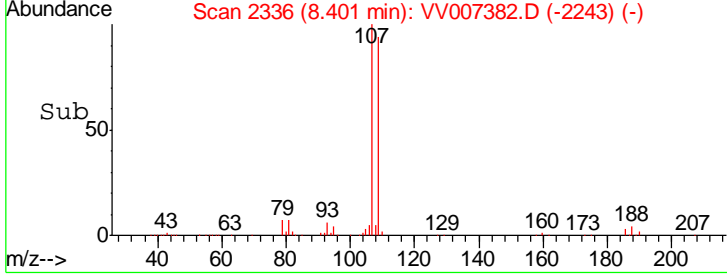
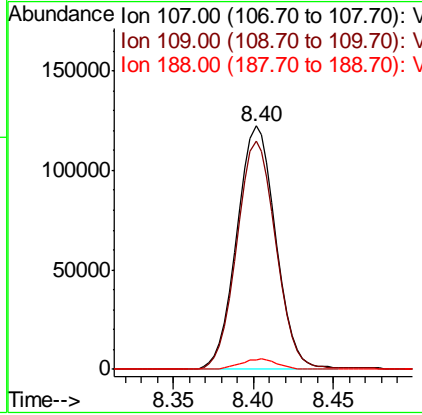
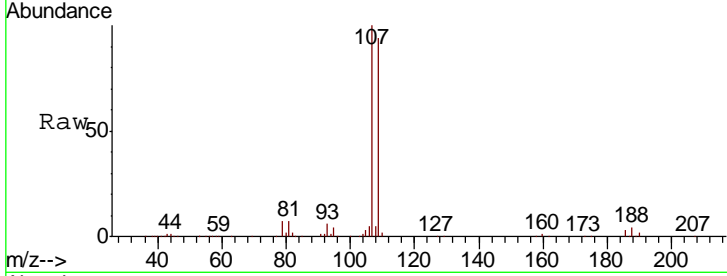




#50
 1,2-Dibromoethane
 Concen: 48.906 ug/L
 RT: 8.40 min Scan# 2336
 Delta R.T. 0.00 min
 Lab File: VV007382.D
 Acq: 05 Sep 2018 14:06

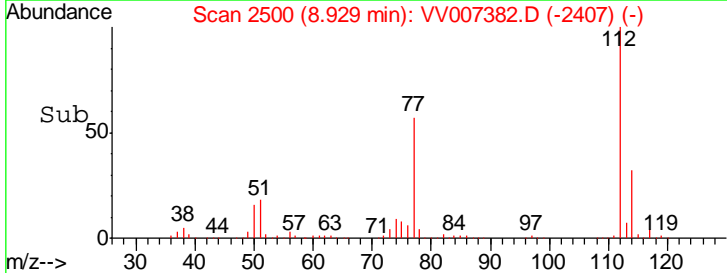
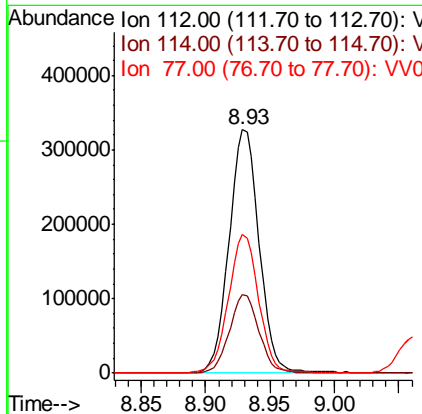
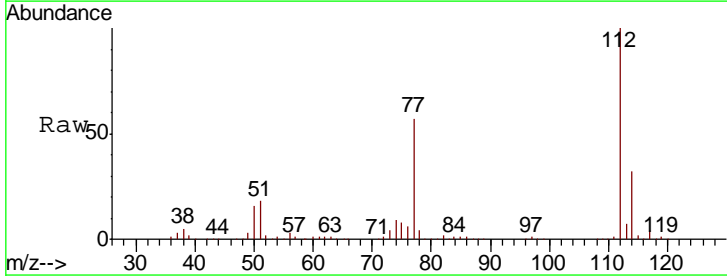
Instrument :
 MSVOA_V
 ClientSampled :
 VSTD05067

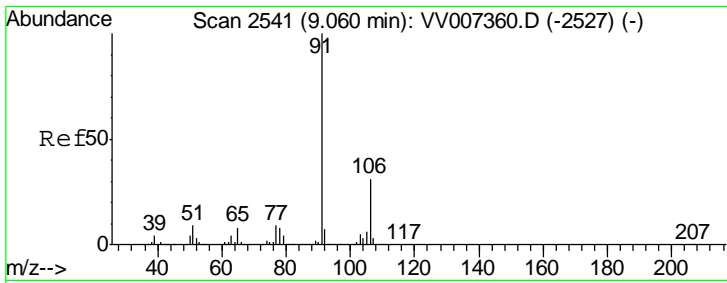
Tgt Ion	Resp	Lower	Upper
107	202189		
109	93.6	64.8	120.3
188	4.1	3.1	4.7



#51
 Chlorobenzene
 Concen: 49.912 ug/L
 RT: 8.93 min Scan# 2500
 Delta R.T. 0.00 min
 Lab File: VV007382.D
 Acq: 05 Sep 2018 14:06

Tgt Ion	Resp	Lower	Upper
112	529156		
114	32.1	22.5	41.7
77	57.1	46.5	69.7

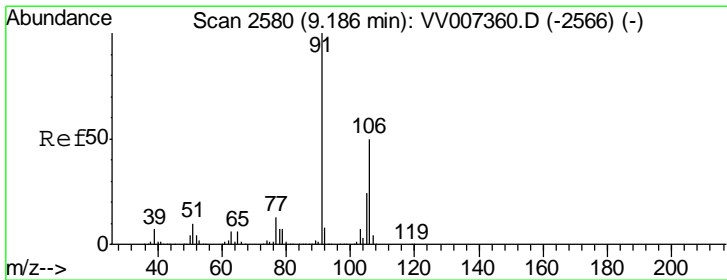
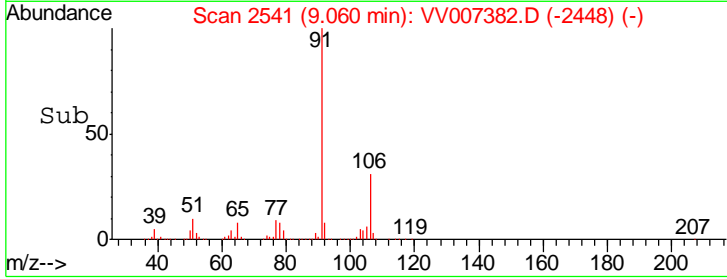
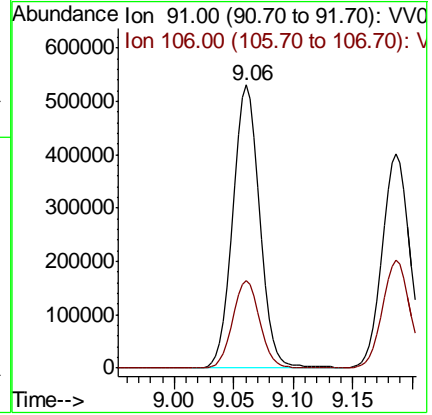
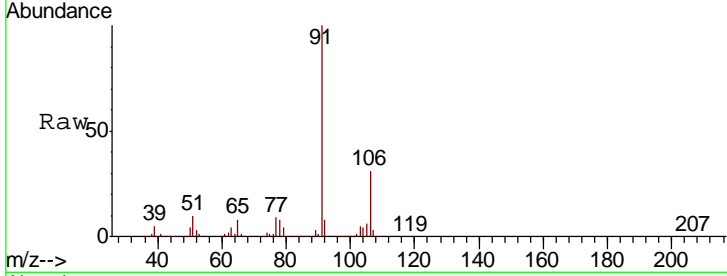




#52
 Ethylbenzene
 Concen: 52.202 ug/L
 RT: 9.06 min Scan# 2541
 Delta R.T. 0.00 min
 Lab File: VV007382.D
 Acq: 05 Sep 2018 14:06

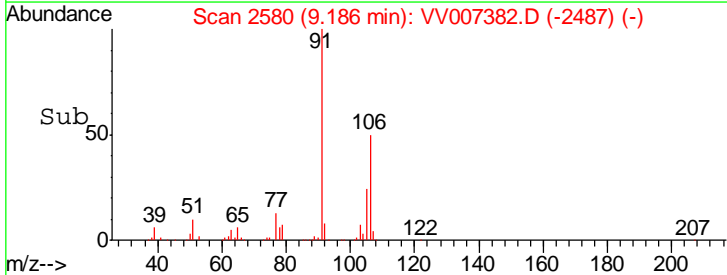
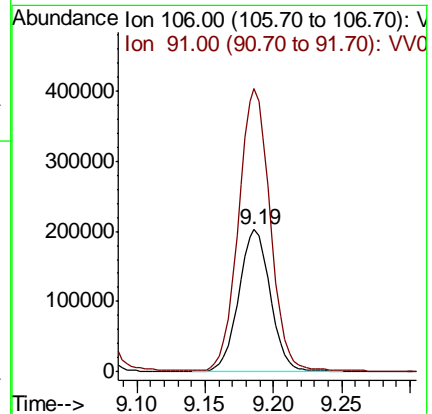
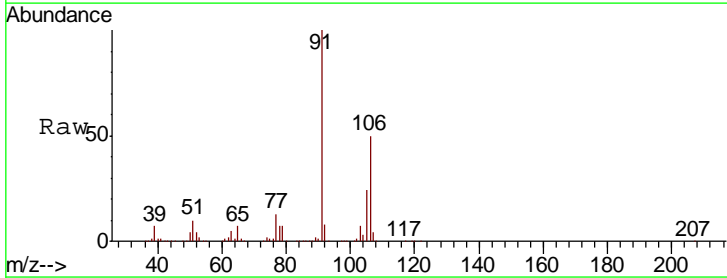
Instrument :
 MSVOA_V
 ClientSampled :
 VSTD05067

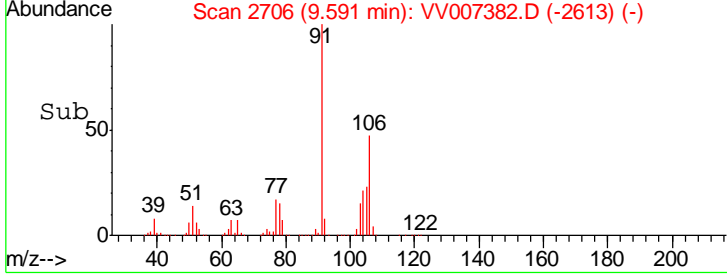
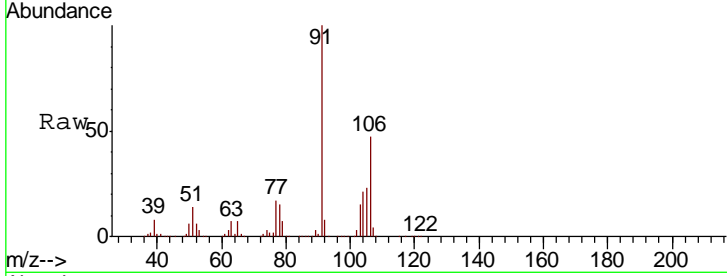
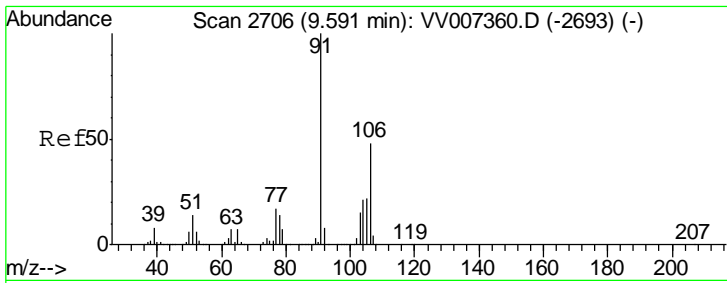
Tgt Ion: 91 Resp: 831124
 Ion Ratio Lower Upper
 91 100
 106 31.1 21.8 40.4



#53
 m,p-Xylene
 Concen: 53.385 ug/L
 RT: 9.19 min Scan# 2580
 Delta R.T. 0.00 min
 Lab File: VV007382.D
 Acq: 05 Sep 2018 14:06

Tgt Ion: 106 Resp: 325403
 Ion Ratio Lower Upper
 106 100
 91 199.1 138.0 256.2

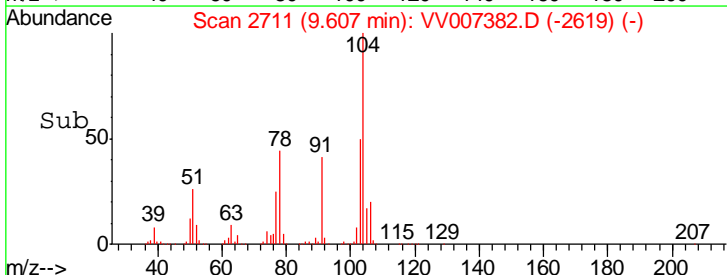
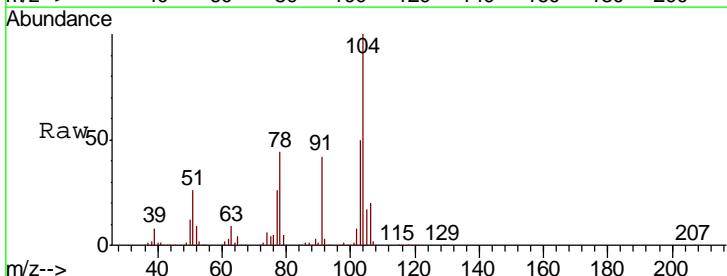
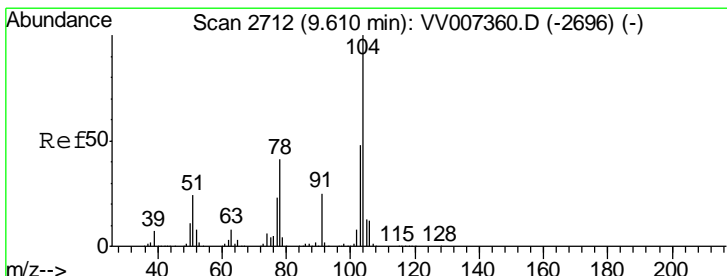
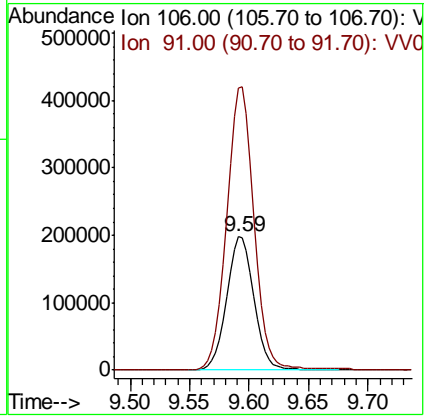




#54
 o-xylene
 Concen: 53.062 ug/L
 RT: 9.59 min Scan# 2706
 Delta R.T. 0.00 min
 Lab File: VV007382.D
 Acq: 05 Sep 2018 14:06

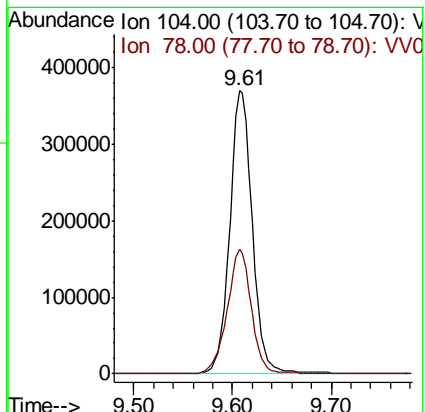
Instrument : MSVOA_V
 ClientSampled : VSTD05067

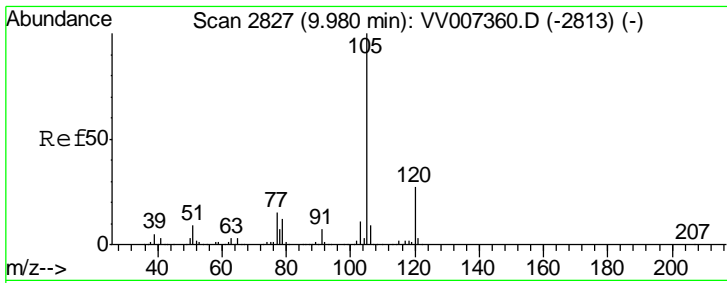
Tgt Ion	Resp	Lower	Upper
106	314508		
91	211.4	147.6	274.2



#55
 Styrene
 Concen: 57.731 ug/L
 RT: 9.61 min Scan# 2711
 Delta R.T. -0.00 min
 Lab File: VV007382.D
 Acq: 05 Sep 2018 14:06

Tgt Ion	Resp	Lower	Upper
104	592744		
78	44.2	29.8	55.3

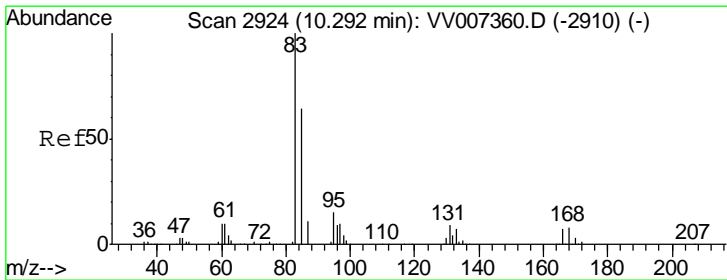
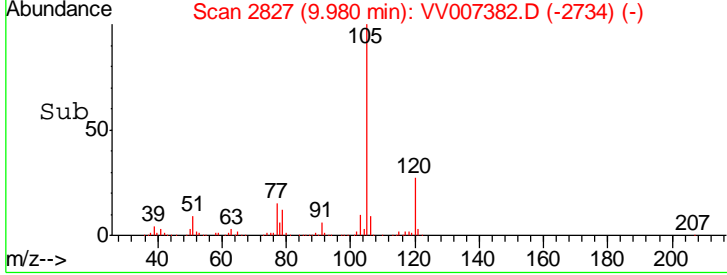
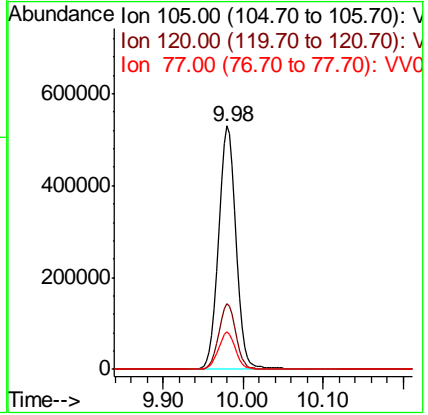
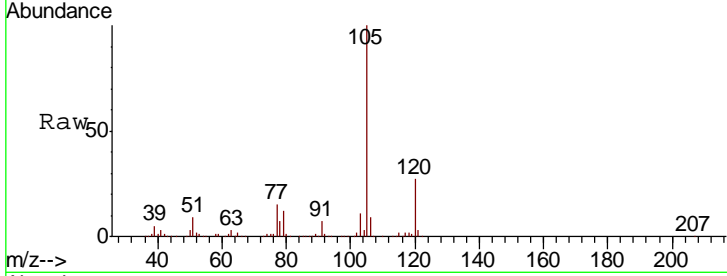




#56
 Isopropylbenzene
 Concen: 53.911 ug/L
 RT: 9.98 min Scan# 2827
 Delta R.T. 0.00 min
 Lab File: VV007382.D
 Acq: 05 Sep 2018 14:06

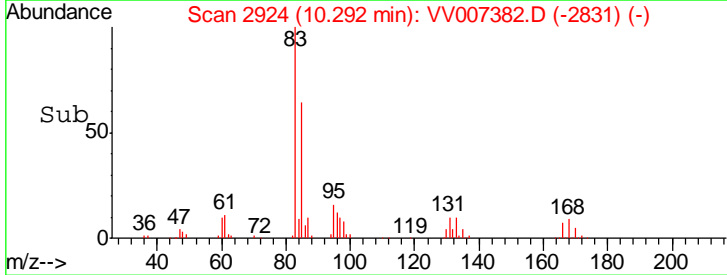
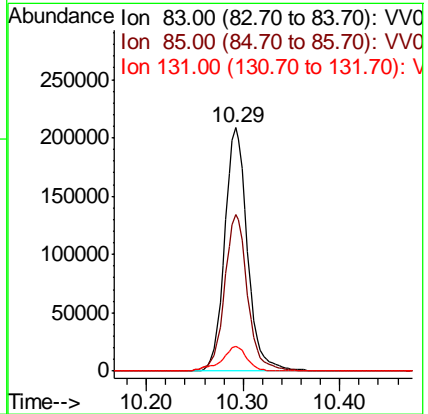
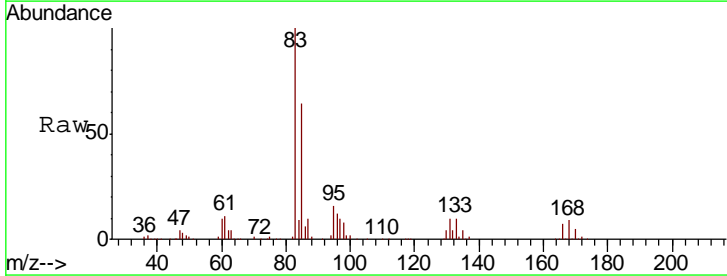
Instrument :
 MSVOA_V
 ClientSampled :
 VSTD05067

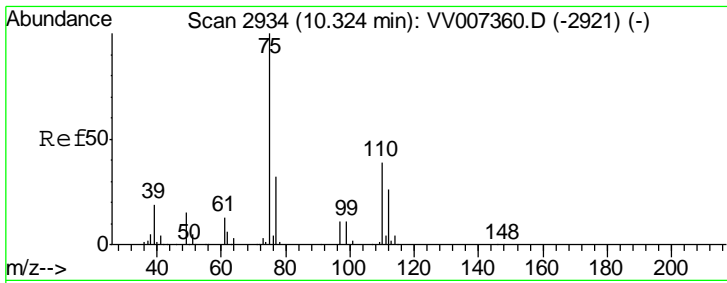
Tgt Ion	Resp	Lower	Upper
105	808180		
120	26.6	21.4	32.0
77	14.9	12.0	18.0



#58
 1,1,2,2-Tetrachloroethane
 Concen: 50.856 ug/L
 RT: 10.29 min Scan# 2924
 Delta R.T. 0.00 min
 Lab File: VV007382.D
 Acq: 05 Sep 2018 14:06

Tgt Ion	Resp	Lower	Upper
83	340506		
85	64.3	44.7	82.9
131	10.1	7.8	11.6

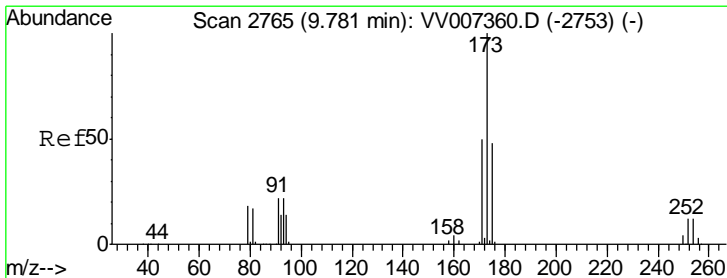
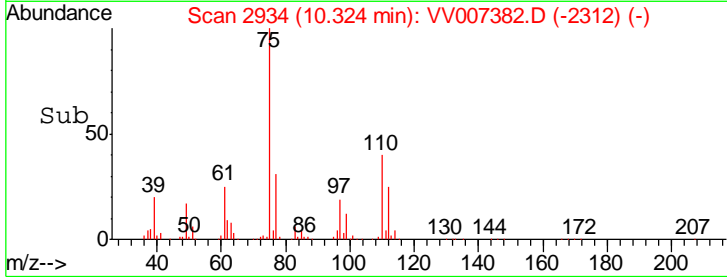
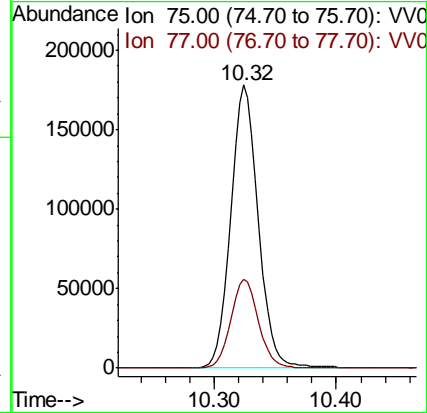
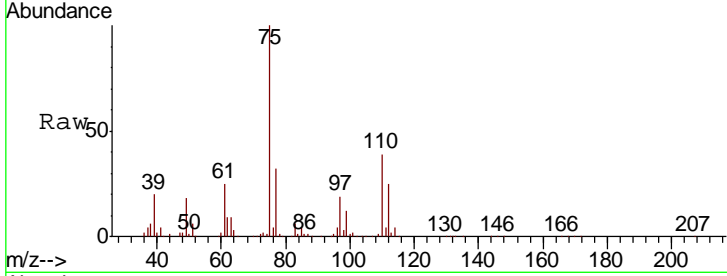




#59
 1,2,3-Trichloropropane
 Concen: 52.729 ug/L
 RT: 10.32 min Scan# 2934
 Delta R.T. 0.00 min
 Lab File: VV007382.D
 Acq: 05 Sep 2018 14:06

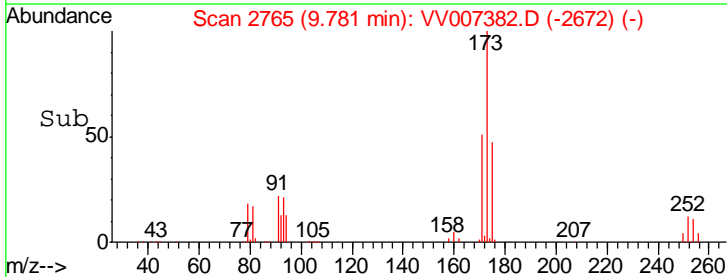
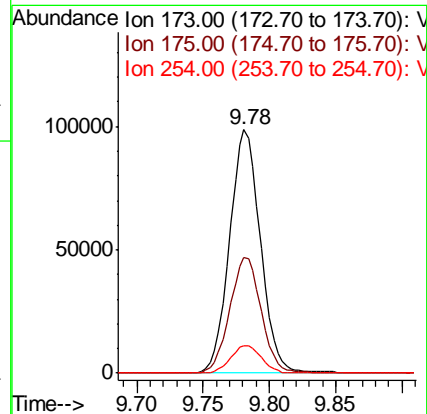
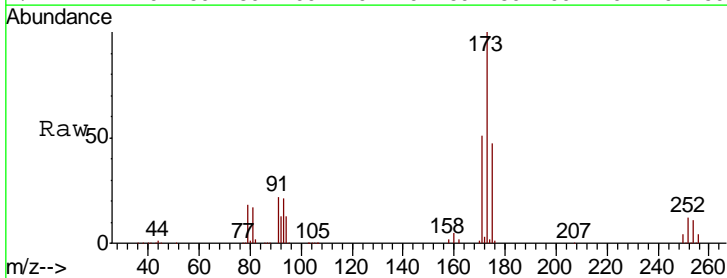
Instrument :
 MSVOA_V
 ClientSampled :
 VSTD05067

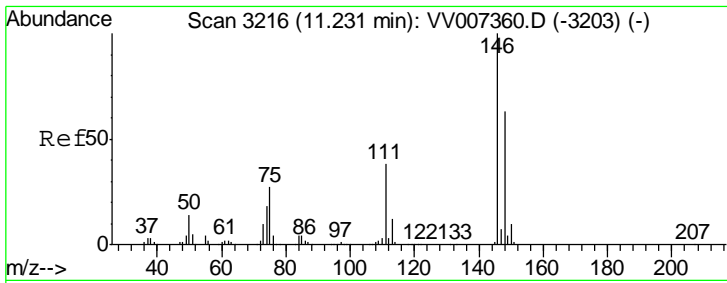
Tgt Ion: 75 Resp: 281262
 Ion Ratio Lower Upper
 75 100
 77 31.4 25.5 38.3



#61
 Bromoform
 Concen: 46.003 ug/L
 RT: 9.78 min Scan# 2765
 Delta R.T. 0.00 min
 Lab File: VV007382.D
 Acq: 05 Sep 2018 14:06

Tgt Ion: 173 Resp: 159884
 Ion Ratio Lower Upper
 173 100
 175 48.3 39.0 58.6
 254 11.3 9.3 13.9

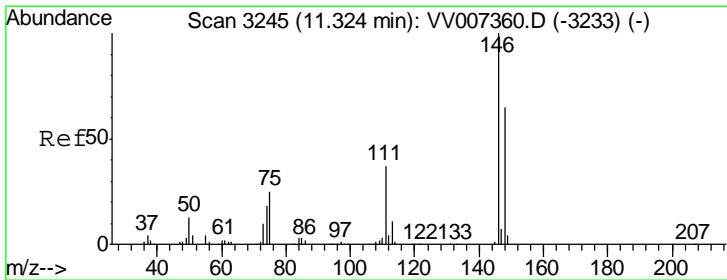
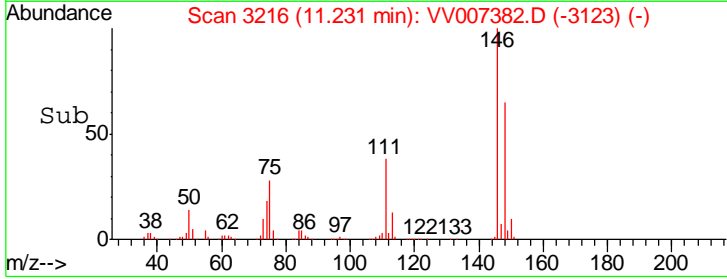
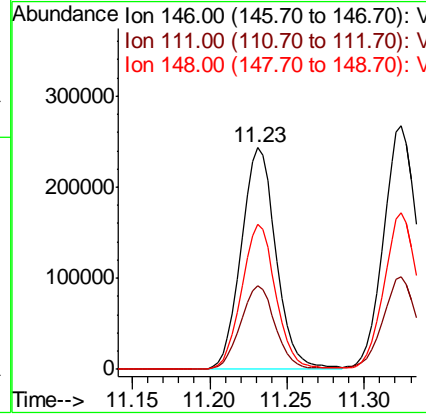
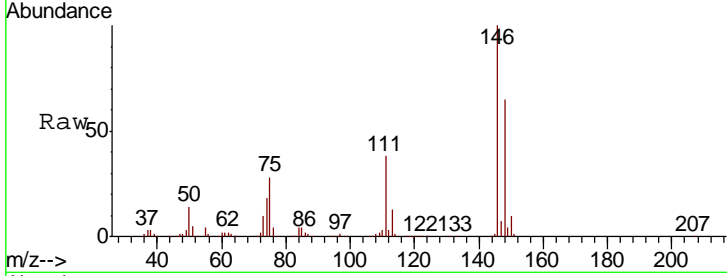




#62
 1,3-Dichlorobenzene
 Concen: 49.163 ug/L
 RT: 11.23 min Scan# 3216
 Delta R.T. 0.00 min
 Lab File: VV007382.D
 Acq: 05 Sep 2018 14:06

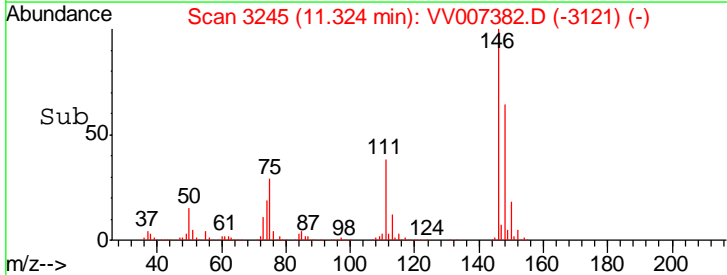
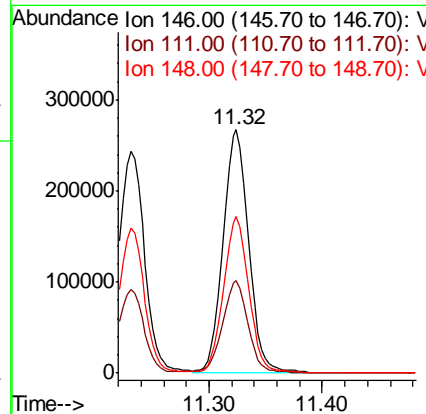
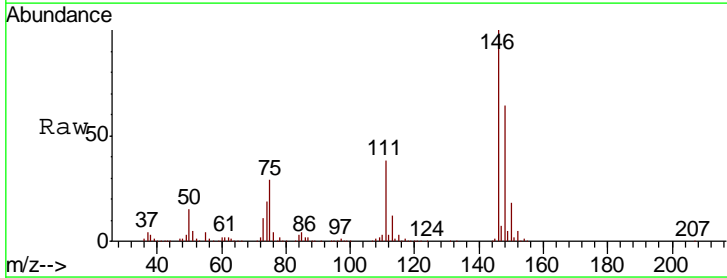
Instrument :
 MSVOA_V
 ClientSampled :
 VSTD05067

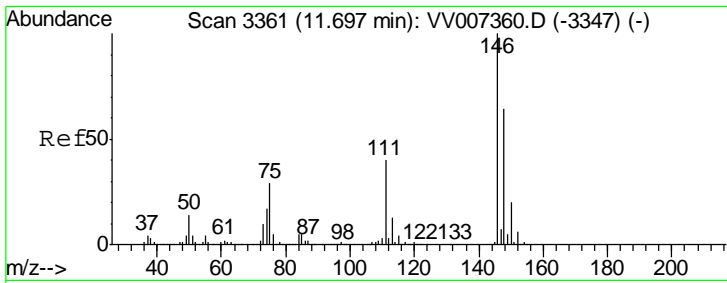
Tgt Ion	Resp	Lower	Upper
146	381172		
111	37.7	27.5	51.1
148	65.2	45.7	84.9



#63
 1,4-Dichlorobenzene
 Concen: 50.597 ug/L
 RT: 11.32 min Scan# 3245
 Delta R.T. 0.00 min
 Lab File: VV007382.D
 Acq: 05 Sep 2018 14:06

Tgt Ion	Resp	Lower	Upper
146	420742		
111	38.0	25.6	47.6
148	64.2	44.2	82.0

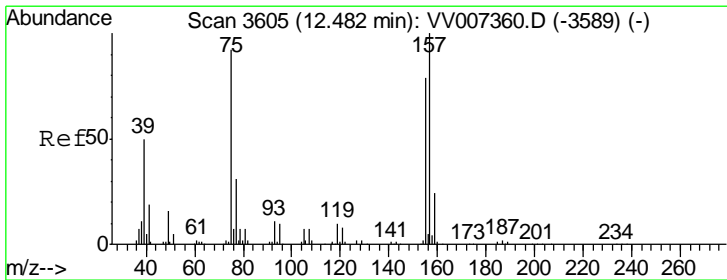
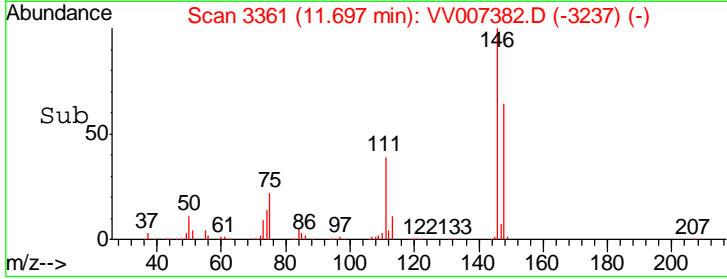
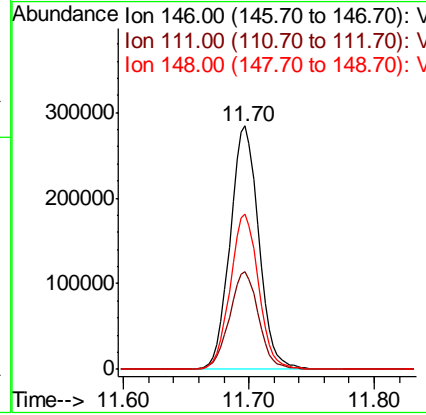
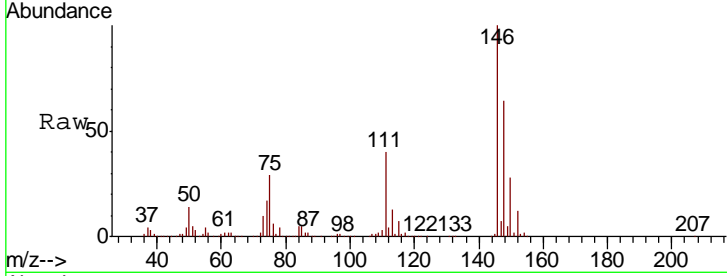




#65
 1,2-Dichlorobenzene
 Concen: 51.910 ug/L
 RT: 11.70 min Scan# 3361
 Delta R.T. 0.00 min
 Lab File: VV007382.D
 Acq: 05 Sep 2018 14:06

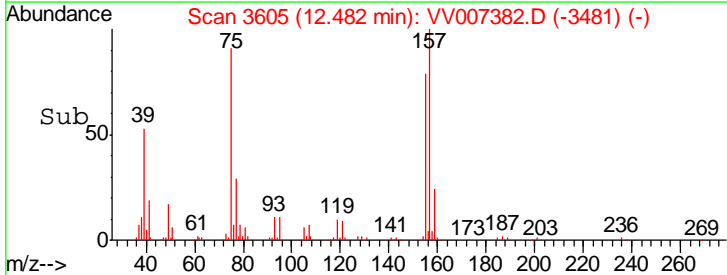
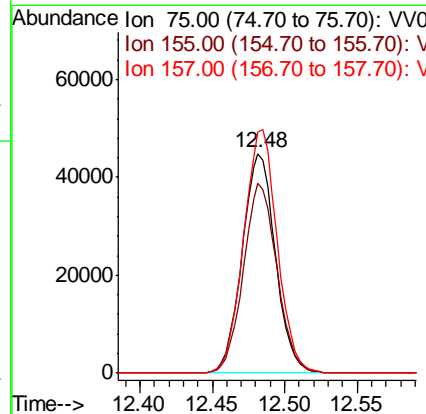
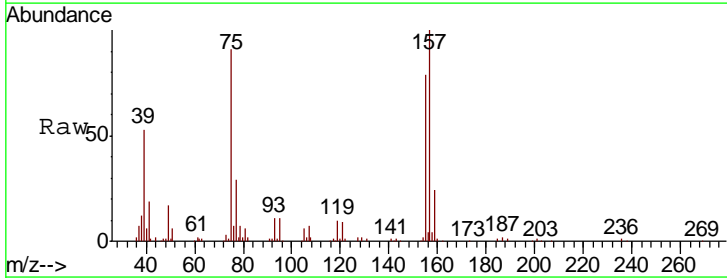
Instrument :
 MSVOA_V
 ClientSampled :
 VSTD05067

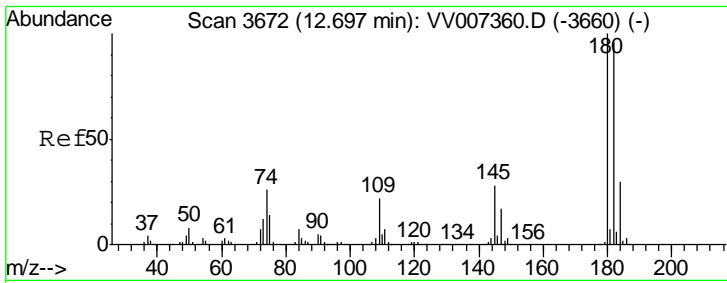
Tgt Ion	Resp	Lower	Upper
146	449933		
111	40.0	31.7	47.5
148	63.7	50.0	75.0



#66
 1,2-Dibromo-3-chloropropane
 Concen: 48.578 ug/L
 RT: 12.48 min Scan# 3605
 Delta R.T. 0.00 min
 Lab File: VV007382.D
 Acq: 05 Sep 2018 14:06

Tgt Ion	Resp	Lower	Upper
75	71384		
155	86.2	70.6	105.8
157	109.6	88.6	132.8



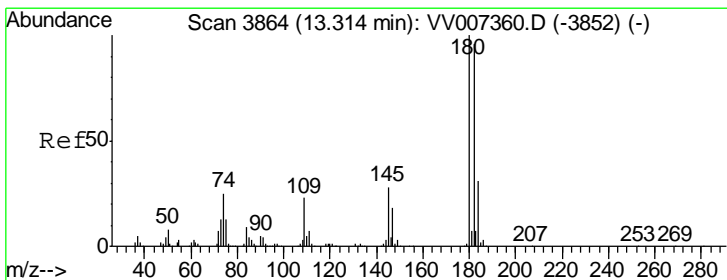
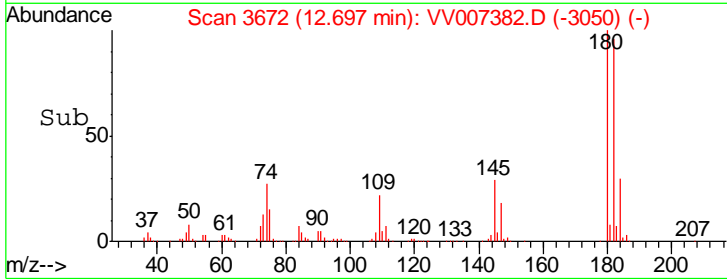
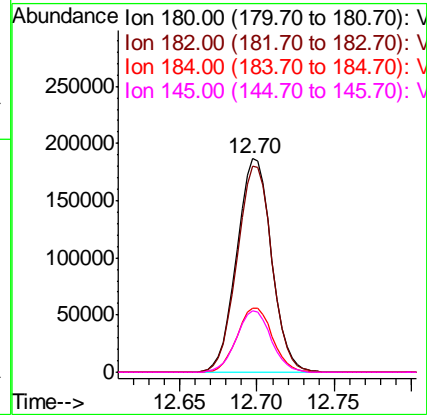
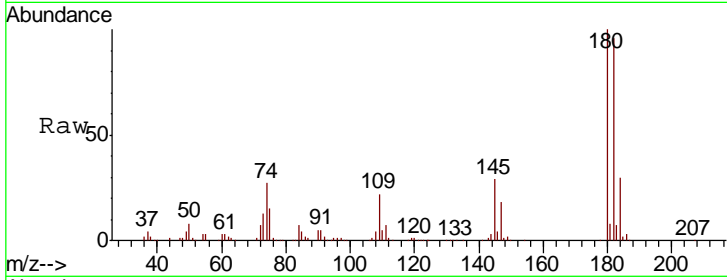


#67
 1,3,5-Trichlorobenzene
 Concen: 48.922 ug/L
 RT: 12.70 min Scan# 3672
 Delta R.T. 0.00 min
 Lab File: VV007382.D
 Acq: 05 Sep 2018 14:06

Instrument : MSVOA_V
 ClientSampled : VSTD05067

Tgt Ion:180 Resp: 291070

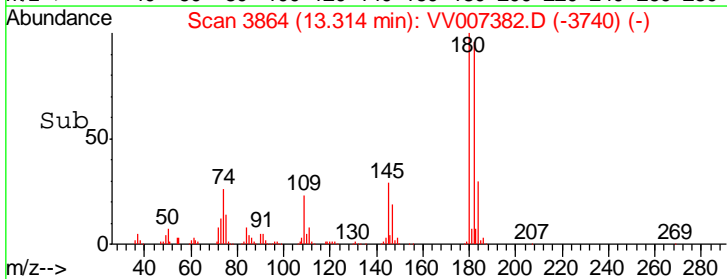
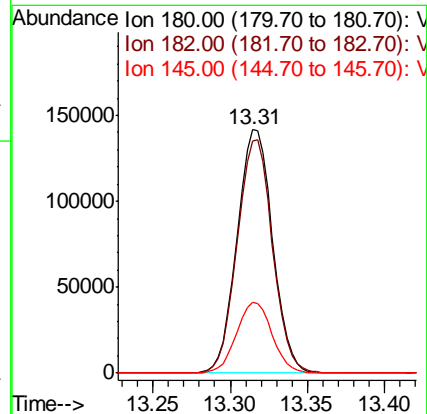
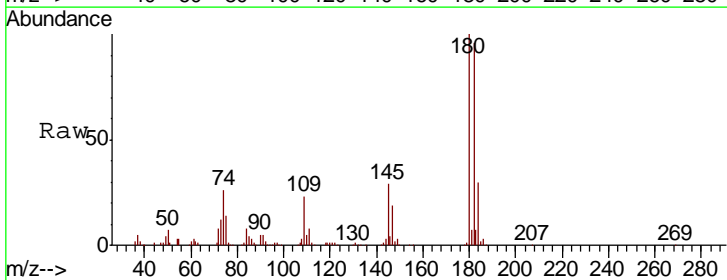
Ion	Ratio	Lower	Upper
180	100		
182	96.9	76.8	115.2
184	30.6	24.2	36.2
145	28.5	22.6	34.0

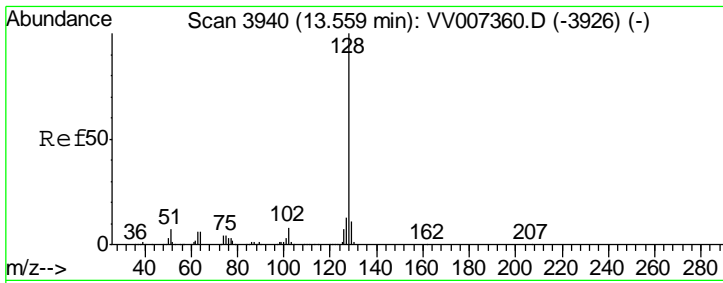


#68
 1,2,4-trichlorobenzene
 Concen: 49.005 ug/L
 RT: 13.31 min Scan# 3864
 Delta R.T. 0.00 min
 Lab File: VV007382.D
 Acq: 05 Sep 2018 14:06

Tgt Ion:180 Resp: 225867

Ion	Ratio	Lower	Upper
180	100		
182	95.2	77.0	115.4
145	29.0	22.9	34.3

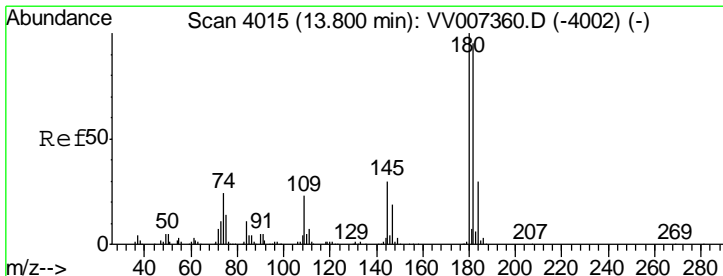
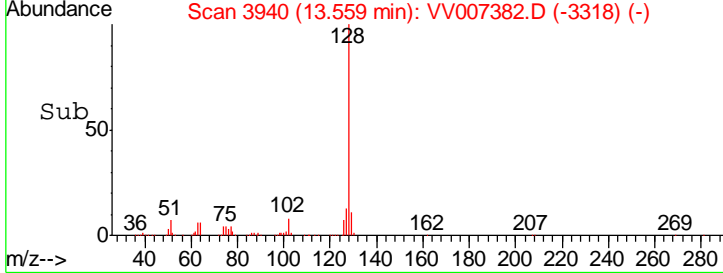
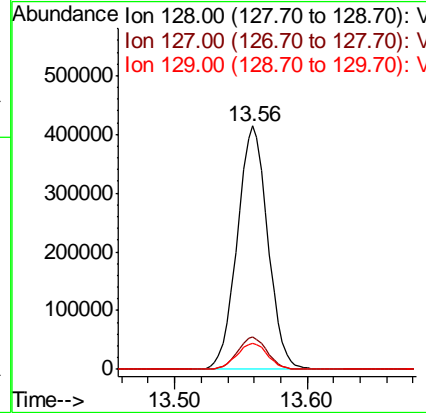
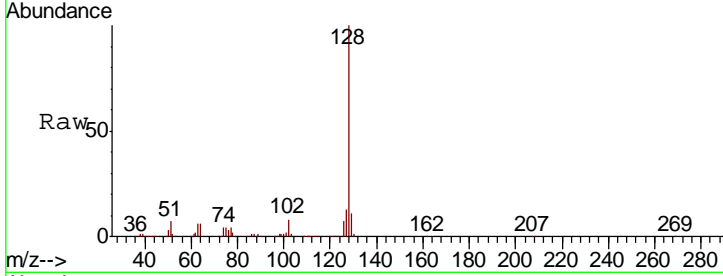




#69
 Naphthalene
 Concen: 49.798 ug/L
 RT: 13.56 min Scan# 3940
 Delta R.T. 0.00 min
 Lab File: VV007382.D
 Acq: 05 Sep 2018 14:06

Instrument : MSVOA_V
 ClientSampled : VSTD05067

Tgt Ion	Resp	Lower	Upper
128	662442		
127	13.1	10.4	15.6
129	10.9	8.7	13.1



#70
 1,2,3-Trichlorobenzene
 Concen: 52.191 ug/L
 RT: 13.80 min Scan# 4015
 Delta R.T. 0.00 min
 Lab File: VV007382.D
 Acq: 05 Sep 2018 14:06

Tgt Ion	Resp	Lower	Upper
180	265817		
182	96.5	77.2	115.8
145	30.9	24.5	36.7

