

Data Path : Z:\voasrv\HPCHEM1\MSVOA\_V\Data\VV090721\  
 Data File : VV022106.D  
 Acq On : 07 Sep 2021 16:36  
 Operator : SY/MD  
 Sample : M3651-08MS  
 Misc : 5.0mL/MSVOA\_V/WATER  
 ALS Vial : 11 Sample Multiplier: 1

Instrument :  
 MSVOA\_V  
 ClientSampled :

Quant Time: Sep 08 01:18:00 2021  
 Quant Method : Z:\voasrv\HPCHEM1\MSVOA\_V\Method\SFAMVLM082721WMA.M  
 Quant Title : VOC Analysis  
 QLast Update : Wed Sep 08 01:14:49 2021  
 Response via : Initial Calibration

Compound	R.T.	QIon	Response	Conc	Units	Dev(Min)
Internal Standards						
1) 1,4-Difluorobenzene	5.619	114	353916	50.000	ug/L	0.00
28) Chlorobenzene-d5	8.853	117	331531	50.000	ug/L	0.00
58) 1,4-Dichlorobenzene-d4	11.252	152	171639	50.000	ug/L	0.00
System Monitoring Compounds						
4) Vinyl Chloride-d3	1.304	65	84838	34.615	ug/L	0.00
Spiked Amount	50.000	Range 60 - 135	Recovery =	69.220%		
7) Chloroethane-d5	1.564	69	72929	38.103	ug/L	0.00
Spiked Amount	50.000	Range 70 - 130	Recovery =	76.200%		
11) 1,1-Dichloroethene-d2	2.105	63	163475	40.331	ug/L	0.00
Spiked Amount	50.000	Range 60 - 125	Recovery =	80.660%		
21) 2-Butanone-d5	3.899	46	171138	101.815	ug/L	0.00
Spiked Amount	100.000	Range 40 - 130	Recovery =	101.810%		
24) Chloroform-d	4.352	84	189798	42.470	ug/L	0.00
Spiked Amount	50.000	Range 70 - 125	Recovery =	84.940%		
26) 1,2-Dichloroethane-d4	5.034	65	114996	43.686	ug/L	0.00
Spiked Amount	50.000	Range 70 - 125	Recovery =	87.380%		
32) Benzene-d6	5.050	84	371976	41.366	ug/L	0.00
Spiked Amount	50.000	Range 70 - 125	Recovery =	82.740%		
36) 1,2-Dichloropropane-d6	6.072	67	119992	42.431	ug/L	0.00
Spiked Amount	50.000	Range 70 - 120	Recovery =	84.860%		
41) Toluene-d8	7.317	98	339091	39.947	ug/L	0.00
Spiked Amount	50.000	Range 80 - 120	Recovery =	79.900%#		
43) trans-1,3-Dichloroprop...	7.622	79	54325	40.361	ug/L	0.00
Spiked Amount	50.000	Range 60 - 125	Recovery =	80.720%		
47) 2-Hexanone-d5	8.091	63	115434	106.384	ug/L	0.00
Spiked Amount	100.000	Range 45 - 130	Recovery =	106.380%		
56) 1,1,2,2-Tetrachloroeth...	10.220	84	174368	48.144	ug/L	0.00
Spiked Amount	50.000	Range 65 - 120	Recovery =	96.280%		
66) 1,2-Dichlorobenzene-d4	11.625	152	140062	41.509	ug/L	0.00
Spiked Amount	50.000	Range 80 - 120	Recovery =	83.020%		
Target Compounds						
2) Dichlorodifluoromethane	1.127	85	77104	31.694	ug/L	100
3) Chloromethane	1.240	50	81303	31.561	ug/L	97
5) Vinyl chloride	1.307	62	88385	34.041	ug/L	98
6) Bromomethane	1.519	94	56552	36.227	ug/L	98
8) Chloroethane	1.584	64	56787	34.962	ug/L	99
9) Trichlorofluoromethane	1.751	101	132418	35.814	ug/L	99
10) 1,1,2-Trichloro-1,2,2-...	2.114	101	82062	37.840	ug/L	100
12) 1,1-Dichloroethene	2.114	96	77479	37.953	ug/L	97
13) Acetone	2.191	43	98382	69.856	ug/L #	73
14) Carbon disulfide	2.291	76	197039	31.987	ug/L	98
15) Methyl Acetate	2.436	43	107840	39.319	ug/L	100
16) Methylene chloride	2.506	84	99379	36.334	ug/L	96
17) trans-1,2-Dichloroethene	2.760	96	88520	35.862	ug/L	98
18) Methyl tert-butyl Ether	2.770	73	306092	39.024	ug/L	99
19) 1,1-Dichloroethane	3.191	63	169404	38.534	ug/L	99
20) cis-1,2-Dichloroethene	3.912	96	104397	38.001	ug/L	96
22) 2-Butanone	3.982	43	143476	72.475	ug/L	97
23) Bromochloromethane	4.252	128	55615	38.013	ug/L	96
25) Chloroform	4.378	83	178528	38.362	ug/L	98

Data Path : Z:\voasrv\HPCHEM1\MSVOA\_V\Data\VW090721\  
 Data File : VW022106.D  
 Acq On : 07 Sep 2021 16:36  
 Operator : SY/MD  
 Sample : M3651-08MS  
 Misc : 5.0mL/MSVOA\_V/WATER  
 ALS Vial : 11 Sample Multiplier: 1

Instrument :  
 MSVOA\_V  
 ClientSampleId :

Quant Time: Sep 08 01:18:00 2021  
 Quant Method : Z:\voasrv\HPCHEM1\MSVOA\_V\Method\SFAMVLM082721WMA.M  
 Quant Title : VOC Analysis  
 QLast Update : Wed Sep 08 01:14:49 2021  
 Response via : Initial Calibration

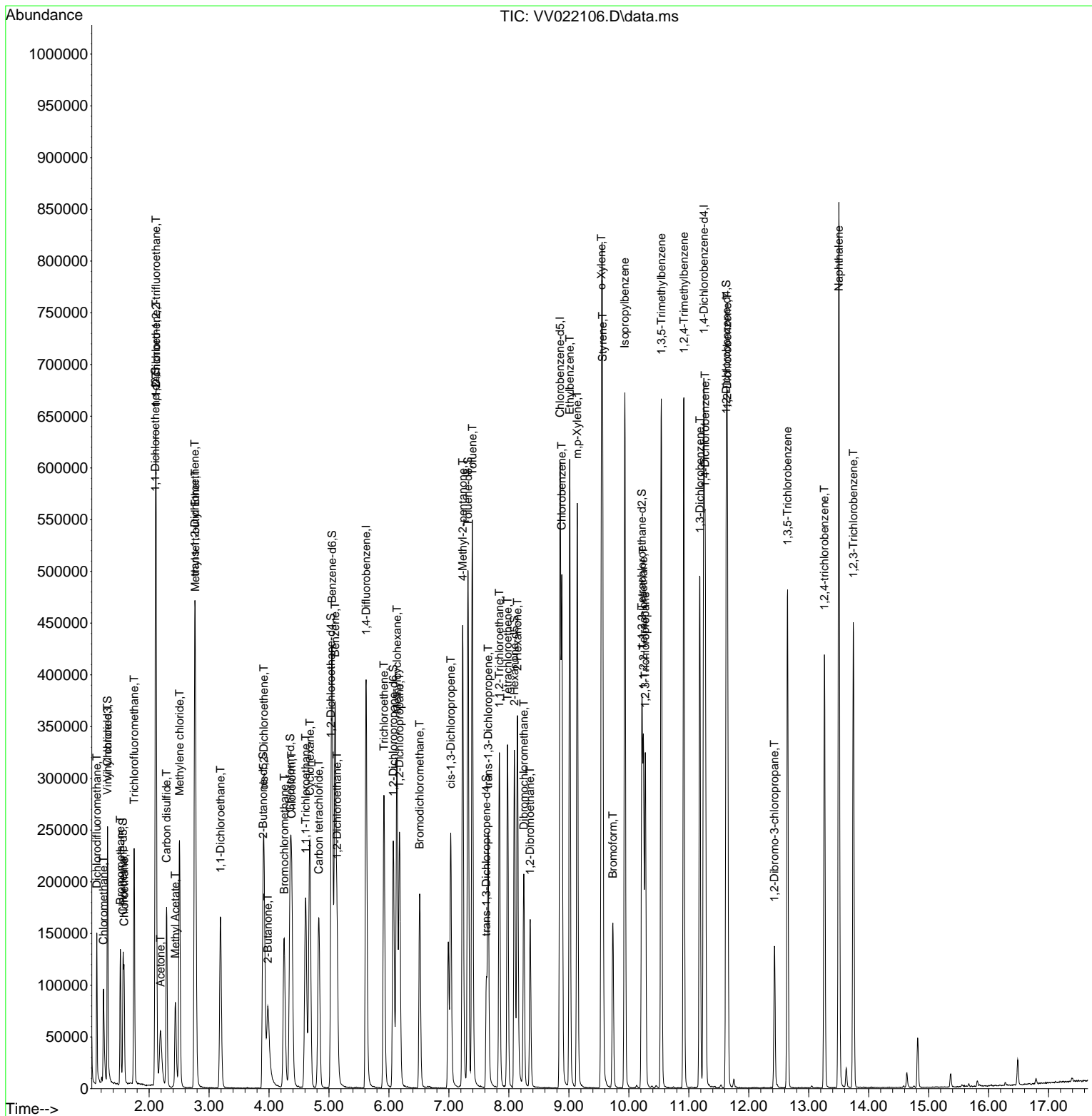
Compound	R.T.	QIon	Response	Conc	Units	Dev(Min)
27) 1,2-Dichloroethane	5.133	62	125281	40.160	ug/L	100
29) Cyclohexane	4.680	56	133293	35.966	ug/L	100
30) 1,1,1-Trichloroethane	4.609	97	152364	38.669	ug/L	99
31) Carbon tetrachloride	4.831	117	126347	37.322	ug/L	99
33) Benzene	5.101	78	375303	38.909	ug/L	100
34) Trichloroethene	5.915	95	99685	36.485	ug/L	99
35) Methylcyclohexane	6.133	83	138981	34.796	ug/L	98
37) 1,2-Dichloropropane	6.175	63	99987	39.990	ug/L	100
38) Bromodichloromethane	6.513	83	124498	38.936	ug/L	98
39) cis-1,3-Dichloropropene	7.030	75	150912	39.093	ug/L	100
40) 4-Methyl-2-pentanone	7.230	43	293605	86.617	ug/L	99
42) Toluene	7.391	91	405222	38.925	ug/L	100
44) trans-1,3-Dichloropropene	7.654	75	139663	38.873	ug/L	97
45) 1,1,2-Trichloroethane	7.841	97	101022	39.709	ug/L	98
46) Tetrachloroethene	7.979	164	75998	35.773	ug/L	100
48) 2-Hexanone	8.143	43	225336	85.678	ug/L	97
49) Dibromochloromethane	8.249	129	107003	39.293	ug/L	99
50) 1,2-Dibromoethane	8.355	107	107006	39.191	ug/L	100
51) Chlorobenzene	8.882	112	263684	37.673	ug/L	99
52) Ethylbenzene	9.014	91	422604	37.500	ug/L	100
53) m,p-Xylene	9.140	106	163286	37.278	ug/L	98
54) o-Xylene	9.545	106	165554	38.199	ug/L	99
55) Styrene	9.564	104	283753	38.364	ug/L	99
57) 1,1,2,2-Tetrachloroethane	10.242	83	156676	42.505	ug/L	97
59) Bromoform	9.734	173	72350	39.688	ug/L	99
60) Isopropylbenzene	9.934	105	429854	39.857	ug/L	100
61) 1,2,3-Trichloropropane	10.275	75	126976	42.685	ug/L	100
62) 1,3,5-Trimethylbenzene	10.542	105	357918	39.530	ug/L	99
63) 1,2,4-Trimethylbenzene	10.918	105	360784	39.203	ug/L	99
64) 1,3-Dichlorobenzene	11.185	146	203390	37.143	ug/L	99
65) 1,4-Dichlorobenzene	11.275	146	206162	36.793	ug/L	99
67) 1,2-Dichlorobenzene	11.644	146	213126	39.198	ug/L	99
68) 1,2-Dibromo-3-chloropr...	12.429	75	30170	42.082	ug/L	95
69) 1,3,5-Trichlorobenzene	12.648	180	145925	35.639	ug/L	98
70) 1,2,4-trichlorobenzene	13.262	180	127839	35.492	ug/L	99
71) Naphthalene	13.503	128	660166	63.715	ug/L	100
72) 1,2,3-Trichlorobenzene	13.744	180	137567	39.157	ug/L	99

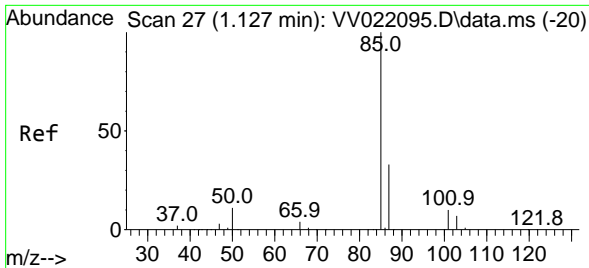
(#) = qualifier out of range (m) = manual integration (+) = signals summed

Data Path : Z:\voasrv\HPCHEM1\MSVOA\_V\Data\VV090721\  
 Data File : VV022106.D  
 Acq On : 07 Sep 2021 16:36  
 Operator : SY/MD  
 Sample : M3651-08MS  
 Misc : 5.0mL/MSVOA\_V/WATER  
 ALS Vial : 11 Sample Multiplier: 1

Instrument :  
 MSVOA\_V  
 ClientSampled :

Quant Time: Sep 08 01:18:00 2021  
 Quant Method : Z:\voasrv\HPCHEM1\MSVOA\_V\Method\SFAMVLM082721WMA.M  
 Quant Title : VOC Analysis  
 QLast Update : Wed Sep 08 01:14:49 2021  
 Response via : Initial Calibration

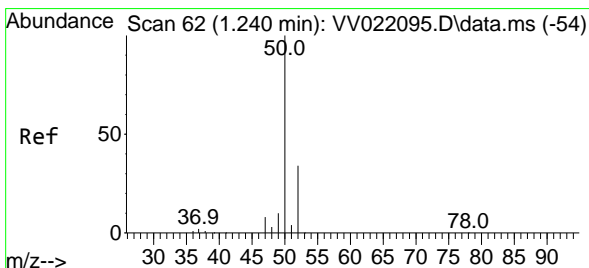
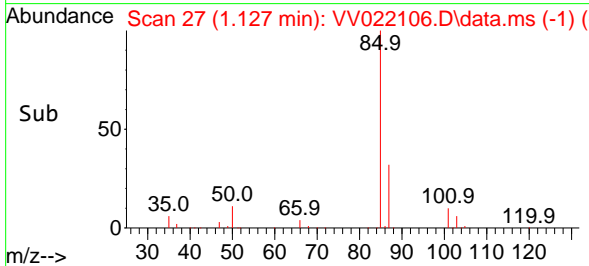
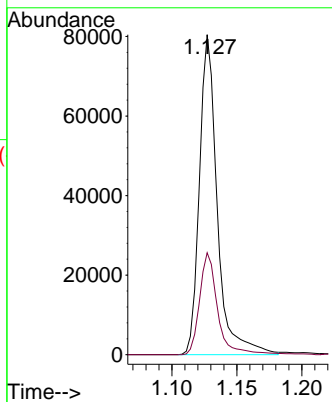
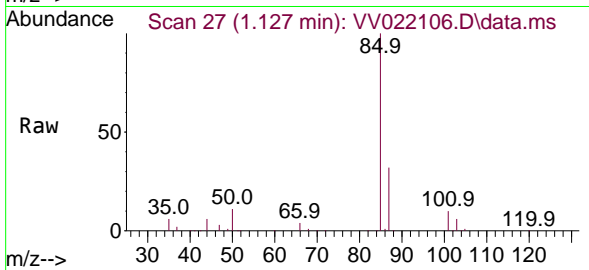




#2  
 Dichlorodifluoromethane  
 Concen: 31.694 ug/L  
 RT: 1.127 min Scan# 27  
 Delta R.T. 0.000 min  
 Lab File: VV022106.D  
 Acq: 07 Sep 2021 16:36

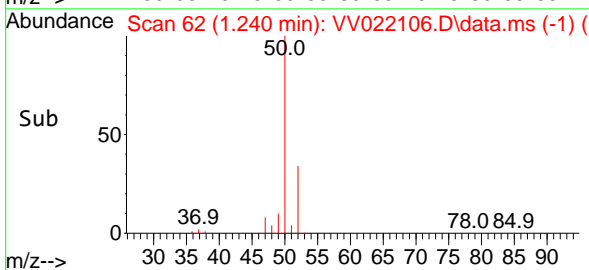
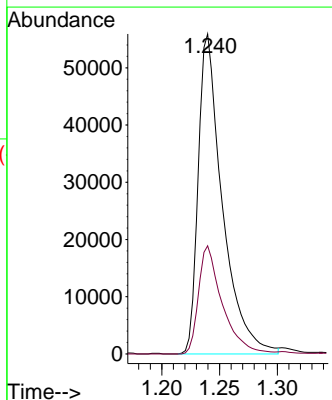
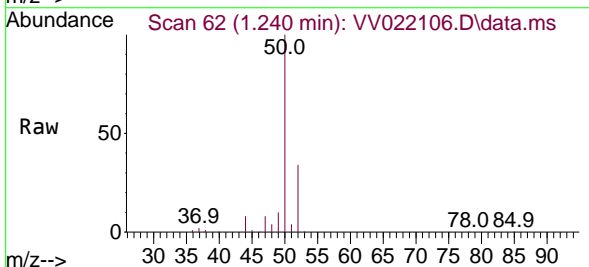
Instrument :  
 MSVOA\_V  
 ClientSampled :

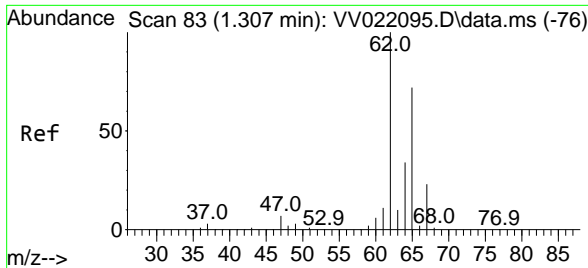
Tgt Ion: 85 Resp: 77104  
 Ion Ratio Lower Upper  
 85 100  
 87 32.4 26.0 39.0



#3  
 Chloromethane  
 Concen: 31.561 ug/L  
 RT: 1.240 min Scan# 62  
 Delta R.T. 0.000 min  
 Lab File: VV022106.D  
 Acq: 07 Sep 2021 16:36

Tgt Ion: 50 Resp: 81303  
 Ion Ratio Lower Upper  
 50 100  
 52 33.8 22.5 41.9

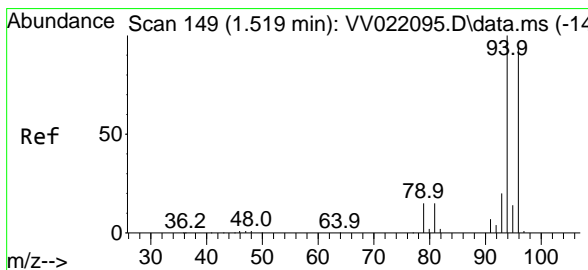
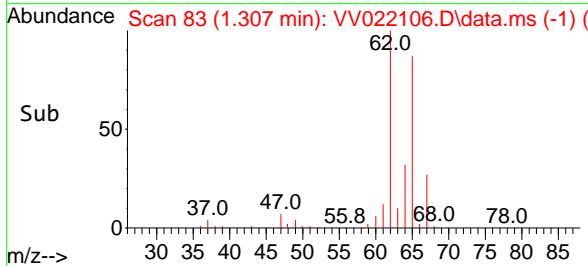
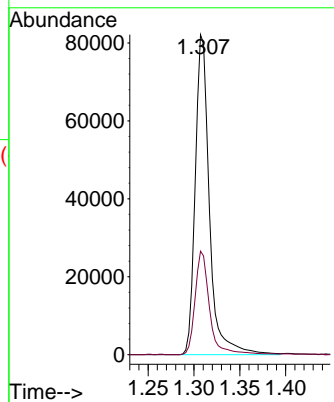
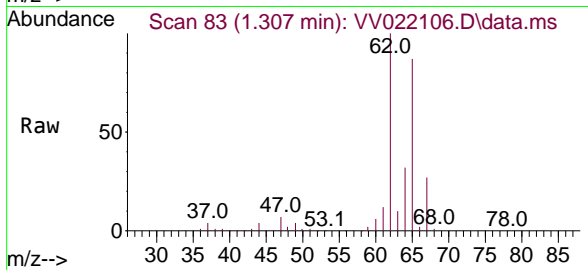




#5  
 Vinyl chloride  
 Concen: 34.041 ug/L  
 RT: 1.307 min Scan# 83  
 Delta R.T. 0.000 min  
 Lab File: VV022106.D  
 Acq: 07 Sep 2021 16:36

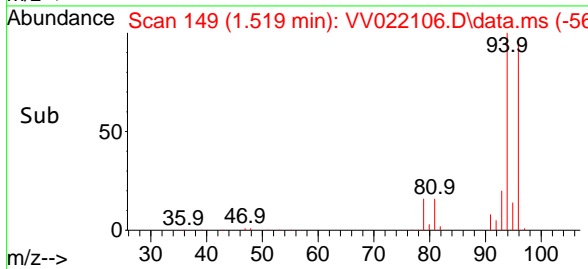
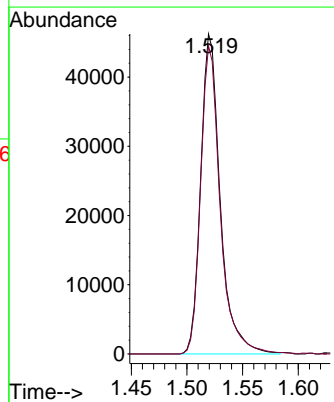
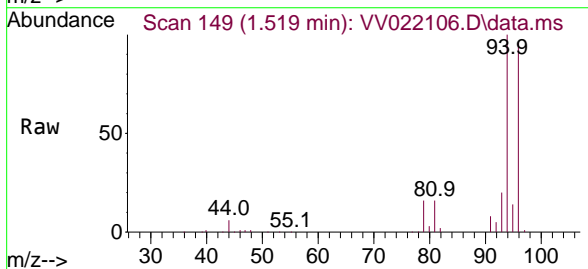
Instrument :  
 MSVOA\_V  
 ClientSampled :

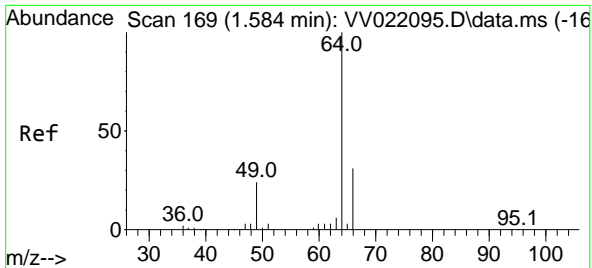
Tgt Ion: 62 Resp: 88385  
 Ion Ratio Lower Upper  
 62 100  
 64 32.3 23.4 43.6



#6  
 Bromomethane  
 Concen: 36.227 ug/L  
 RT: 1.519 min Scan# 149  
 Delta R.T. 0.000 min  
 Lab File: VV022106.D  
 Acq: 07 Sep 2021 16:36

Tgt Ion: 94 Resp: 56552  
 Ion Ratio Lower Upper  
 94 100  
 96 96.3 65.8 122.2

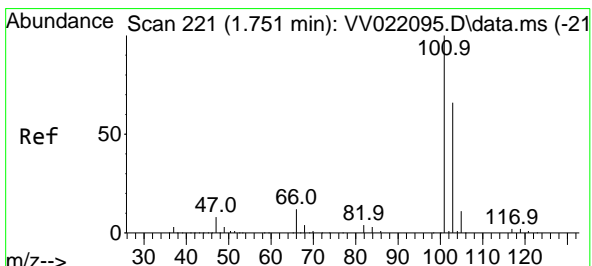
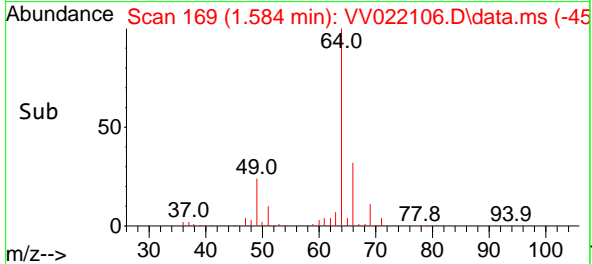
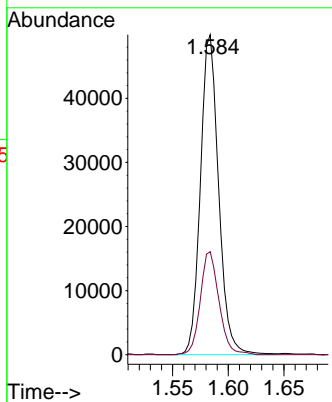
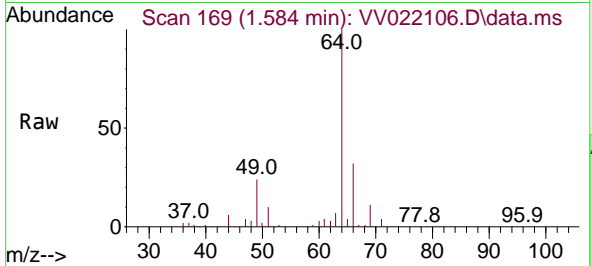




#8  
 Chloroethane  
 Concen: 34.962 ug/L  
 RT: 1.584 min Scan# 169  
 Delta R.T. 0.000 min  
 Lab File: VV022106.D  
 Acq: 07 Sep 2021 16:36

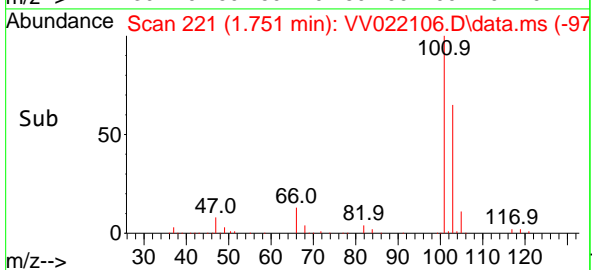
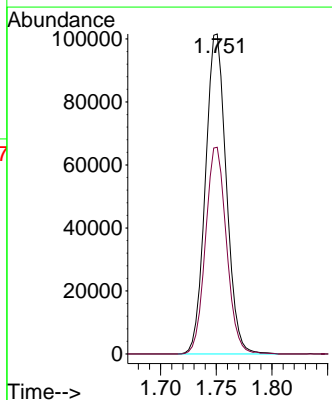
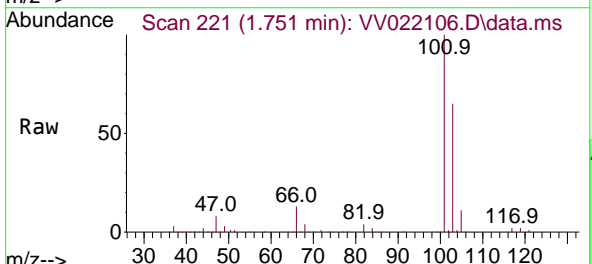
Instrument :  
 MSVOA\_V  
 ClientSampled :

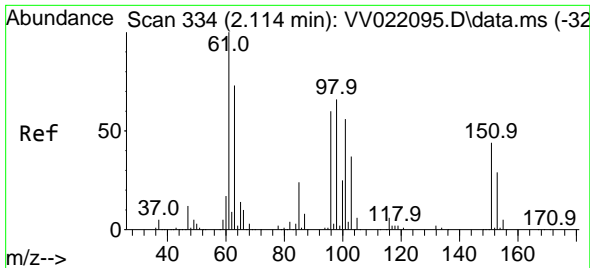
Tgt Ion: 64 Resp: 56787  
 Ion Ratio Lower Upper  
 64 100  
 66 32.2 22.7 42.3



#9  
 Trichlorofluoromethane  
 Concen: 35.814 ug/L  
 RT: 1.751 min Scan# 221  
 Delta R.T. 0.000 min  
 Lab File: VV022106.D  
 Acq: 07 Sep 2021 16:36

Tgt Ion:101 Resp: 132418  
 Ion Ratio Lower Upper  
 101 100  
 103 65.0 51.4 77.0

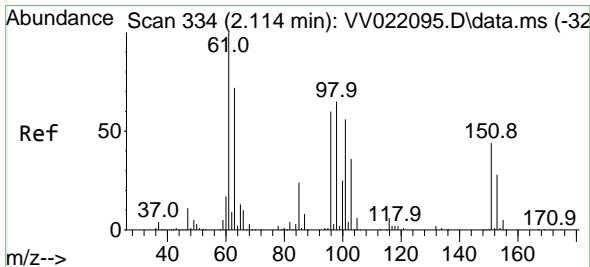
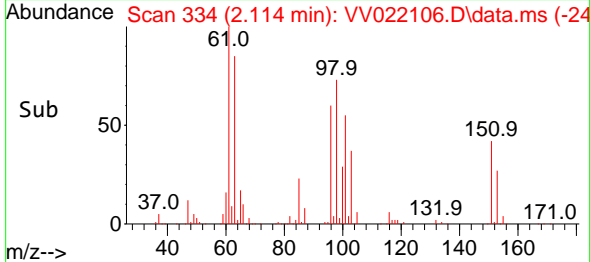
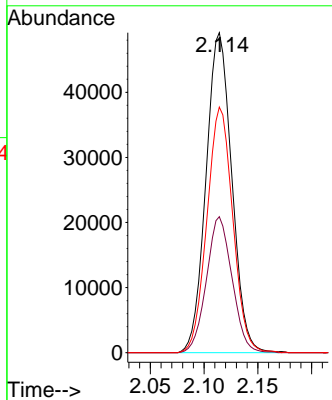
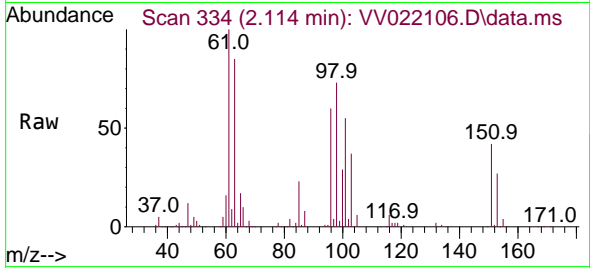




#10  
 1,1,2-Trichloro-1,2,2-trifluoroethane  
 Concen: 37.840 ug/L  
 RT: 2.114 min Scan# 334  
 Delta R.T. 0.000 min  
 Lab File: VV022106.D  
 Acq: 07 Sep 2021 16:36

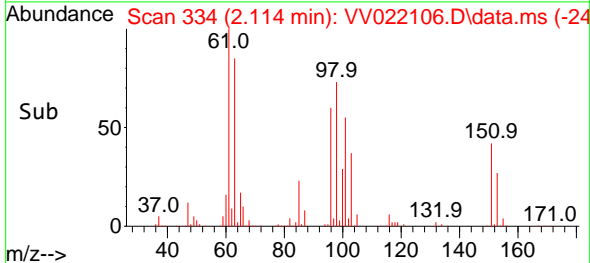
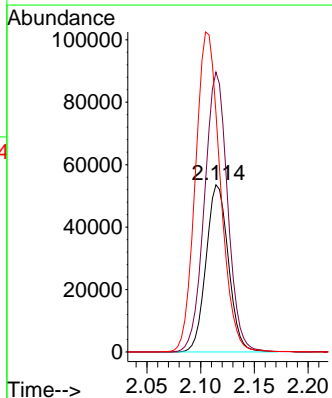
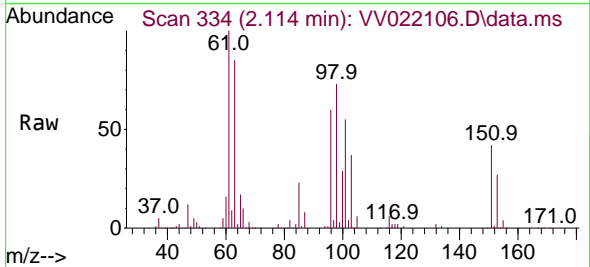
Instrument :  
 MSVOA\_V  
 ClientSampled :

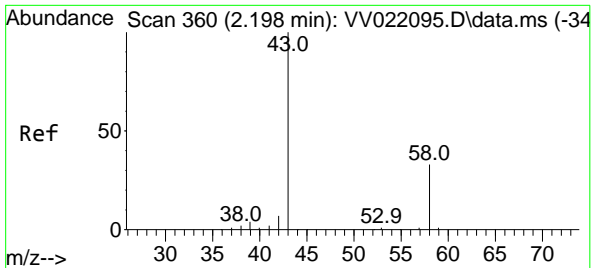
Tgt Ion	Resp	Lower	Upper
101	82062		
101	100		
85	42.1	33.4	50.0
151	76.8	61.7	92.5



#12  
 1,1-Dichloroethene  
 Concen: 37.953 ug/L  
 RT: 2.114 min Scan# 334  
 Delta R.T. 0.000 min  
 Lab File: VV022106.D  
 Acq: 07 Sep 2021 16:36

Tgt Ion	Resp	Lower	Upper
96	77479		
96	100		
61	167.4	113.2	210.2
63	143.0	102.3	189.9

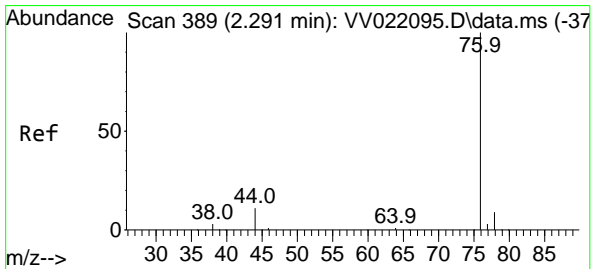
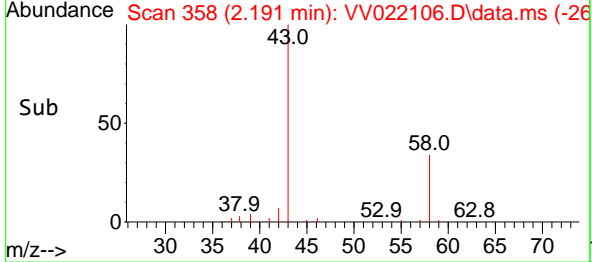
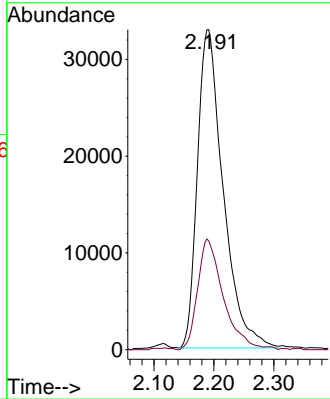
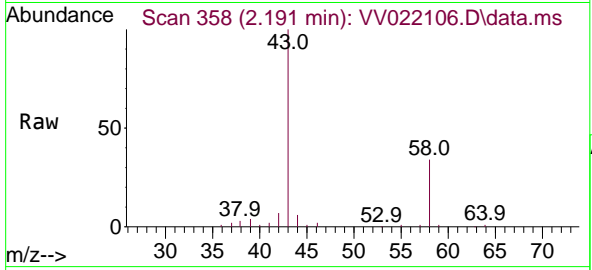




#13  
 Acetone  
 Concen: 69.856 ug/L  
 RT: 2.191 min Scan# 358  
 Delta R.T. -0.006 min  
 Lab File: VV022106.D  
 Acq: 07 Sep 2021 16:36

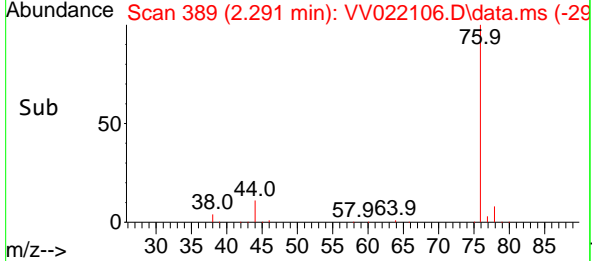
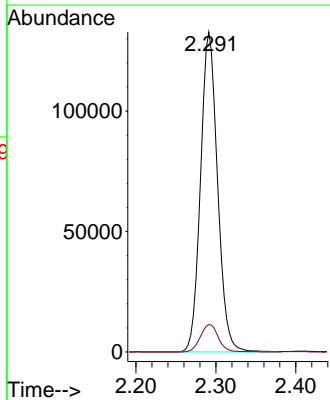
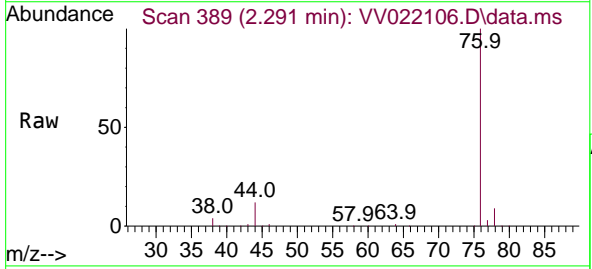
Instrument :  
 MSVOA\_V  
 ClientSampled :

Tgt Ion	Resp	Lower	Upper
43	100		
58	34.5	0.0	0.4#

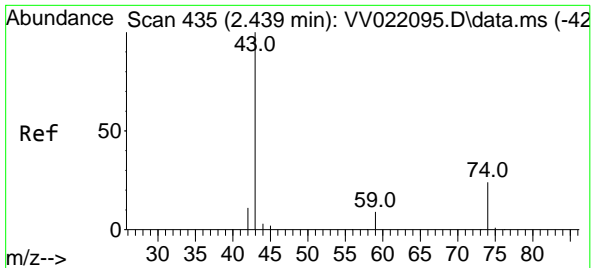


#14  
 Carbon disulfide  
 Concen: 31.987 ug/L  
 RT: 2.291 min Scan# 389  
 Delta R.T. 0.000 min  
 Lab File: VV022106.D  
 Acq: 07 Sep 2021 16:36

Tgt Ion	Resp	Lower	Upper
76	100		
78	8.6	7.4	11.2

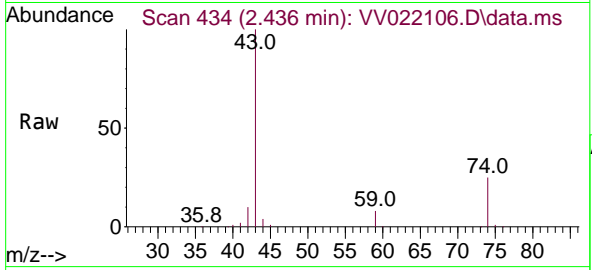




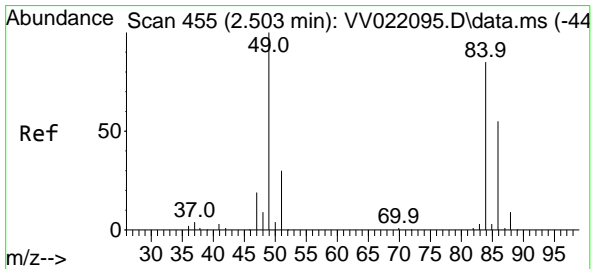
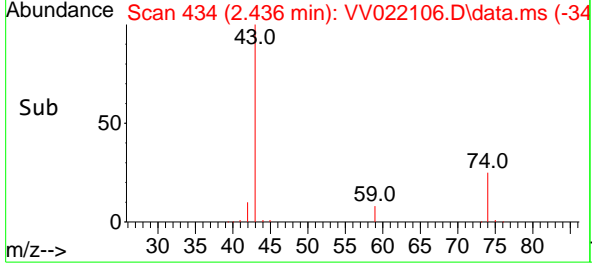
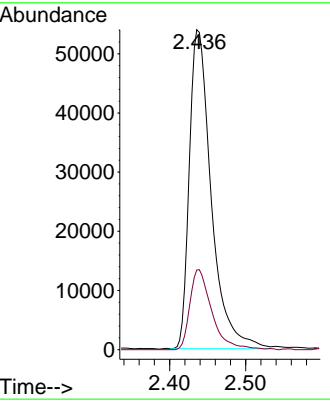


#15  
 Methyl Acetate  
 Concen: 39.319 ug/L  
 RT: 2.436 min Scan# 434  
 Delta R.T. -0.003 min  
 Lab File: VV022106.D  
 Acq: 07 Sep 2021 16:36

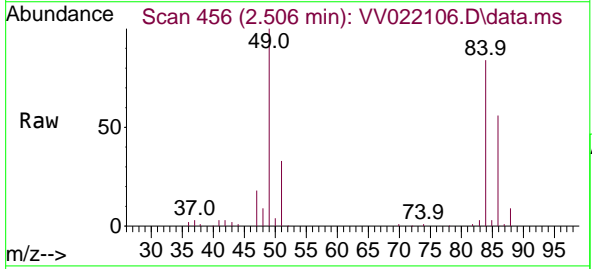
Instrument :  
 MSVOA\_V  
 ClientSampled :



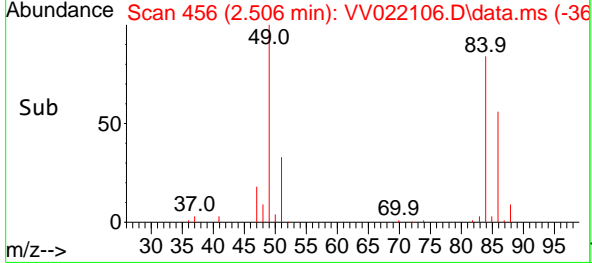
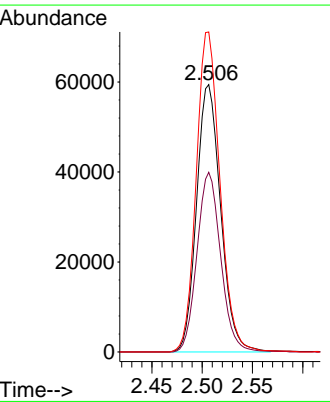
Tgt Ion: 43 Resp: 107840  
 Ion Ratio Lower Upper  
 43 100  
 74 25.1 20.2 30.2

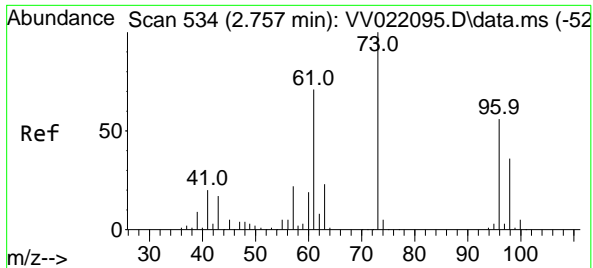


#16  
 Methylene chloride  
 Concen: 36.334 ug/L  
 RT: 2.506 min Scan# 456  
 Delta R.T. 0.003 min  
 Lab File: VV022106.D  
 Acq: 07 Sep 2021 16:36



Tgt Ion: 84 Resp: 99379  
 Ion Ratio Lower Upper  
 84 100  
 86 67.2 44.8 83.2  
 49 119.7 80.2 149.0



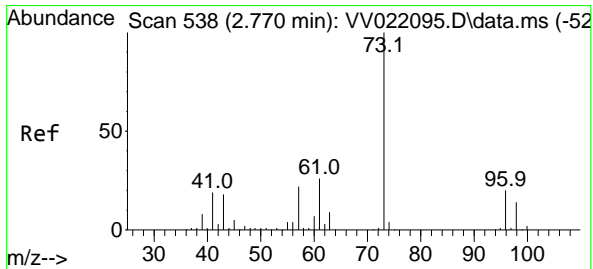
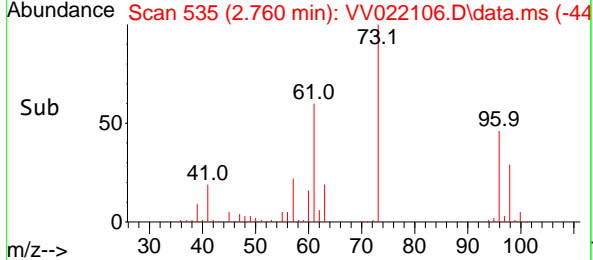
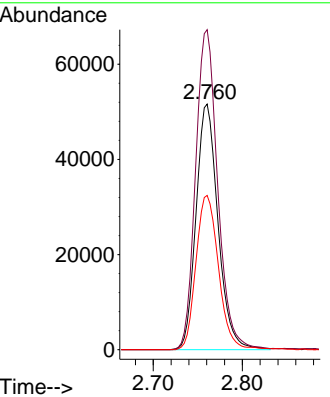
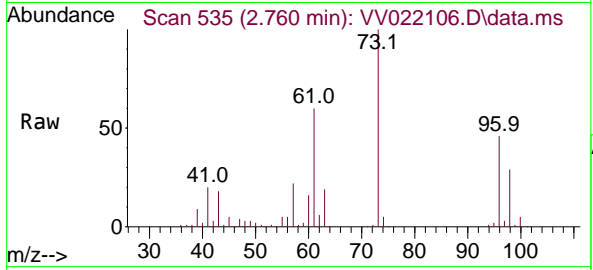


#17  
 trans-1,2-Dichloroethene  
 Concen: 35.862 ug/L  
 RT: 2.760 min Scan# 535  
 Delta R.T. 0.003 min  
 Lab File: VV022106.D  
 Acq: 07 Sep 2021 16:36

Instrument :  
 MSVOA\_V  
 ClientSampled :

Tgt Ion: 96 Resp: 88520

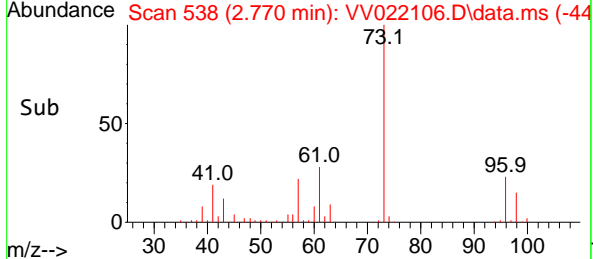
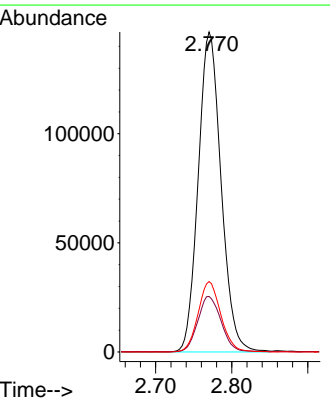
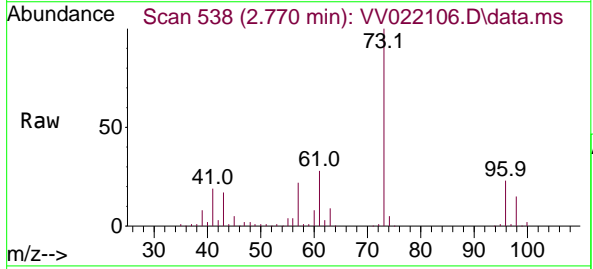
Ion	Ratio	Lower	Upper
96	100		
61	130.3	89.1	165.5
98	62.8	43.8	81.3

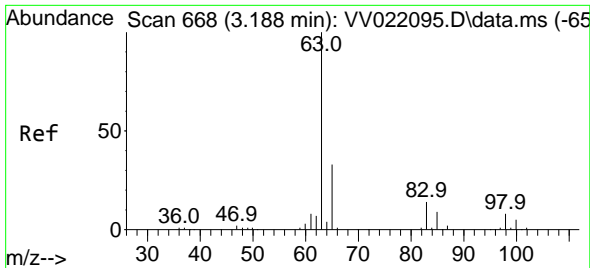


#18  
 Methyl tert-butyl Ether  
 Concen: 39.024 ug/L  
 RT: 2.770 min Scan# 538  
 Delta R.T. 0.000 min  
 Lab File: VV022106.D  
 Acq: 07 Sep 2021 16:36

Tgt Ion: 73 Resp: 306092

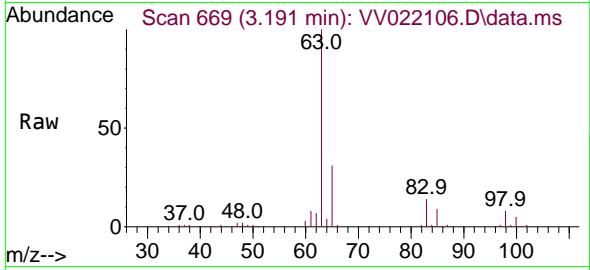
Ion	Ratio	Lower	Upper
73	100		
43	17.6	13.8	20.6
57	21.9	17.1	25.7



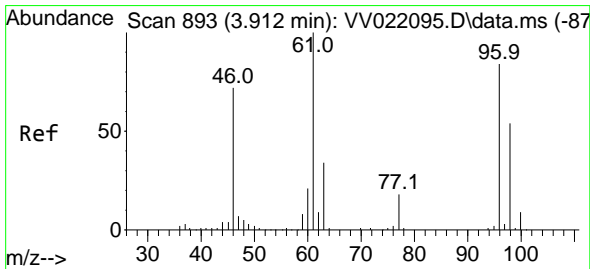
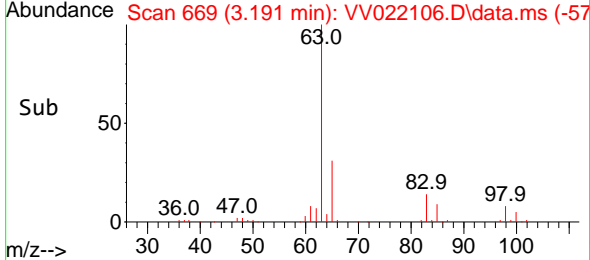
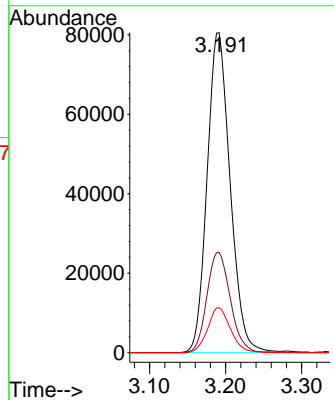


#19  
 1,1-Dichloroethane  
 Concen: 38.534 ug/L  
 RT: 3.191 min Scan# 669  
 Delta R.T. 0.003 min  
 Lab File: VV022106.D  
 Acq: 07 Sep 2021 16:36

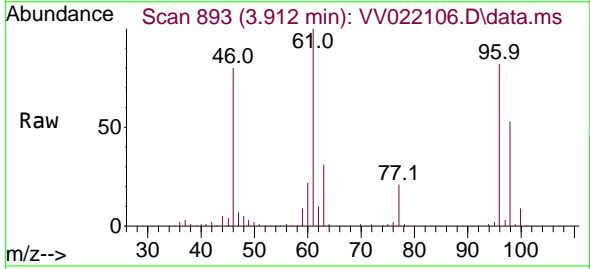
Instrument :  
 MSVOA\_V  
 ClientSampled :



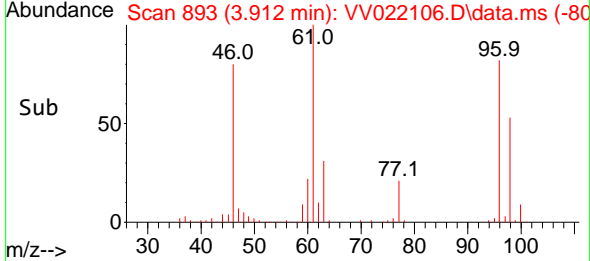
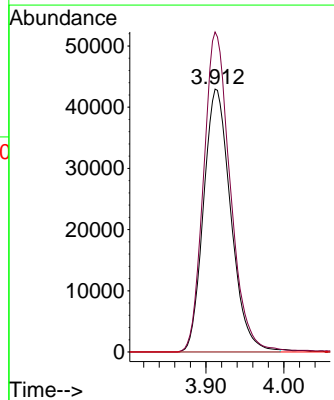
Tgt Ion: 63 Resp: 169404  
 Ion Ratio Lower Upper  
 63 100  
 65 31.3 22.2 41.2  
 83 14.1 9.7 17.9

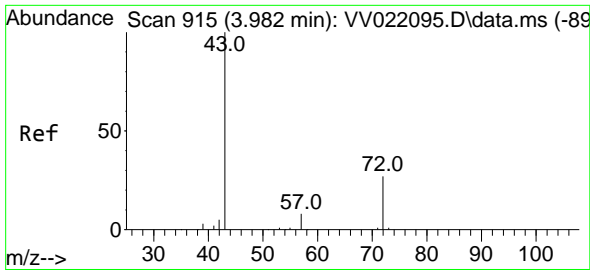


#20  
 cis-1,2-Dichloroethene  
 Concen: 38.001 ug/L  
 RT: 3.912 min Scan# 893  
 Delta R.T. 0.000 min  
 Lab File: VV022106.D  
 Acq: 07 Sep 2021 16:36



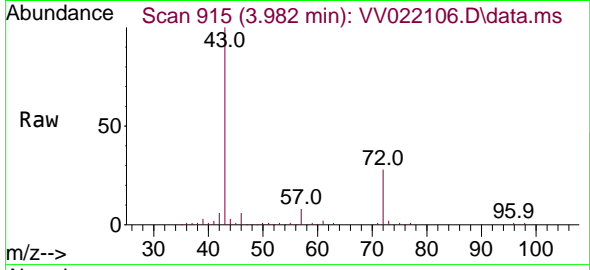
Tgt Ion: 96 Resp: 104397  
 Ion Ratio Lower Upper  
 96 100  
 61 121.7 81.8 152.0  
 68 0.0 0.0 0.0



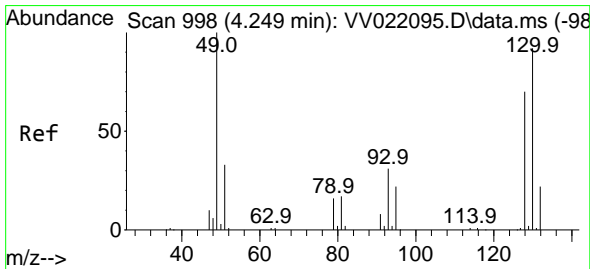
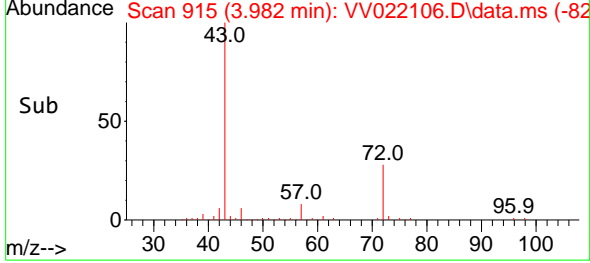
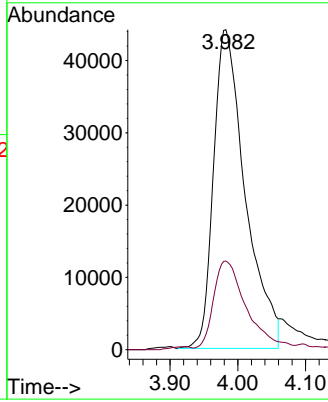


#22  
 2-Butanone  
 Concen: 72.475 ug/L  
 RT: 3.982 min Scan# 915  
 Delta R.T. 0.000 min  
 Lab File: VV022106.D  
 Acq: 07 Sep 2021 16:36

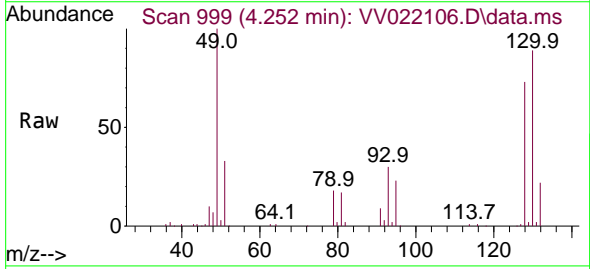
Instrument :  
 MSVOA\_V  
 ClientSampled :



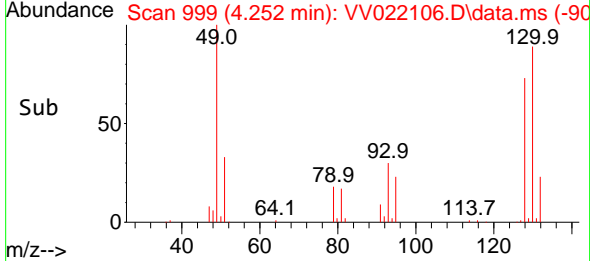
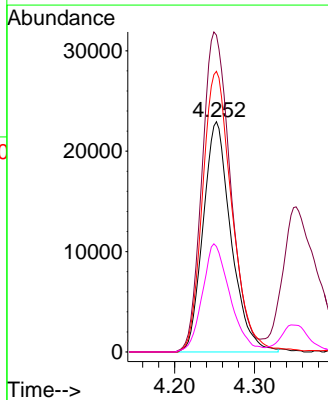
Tgt Ion: 43 Resp: 143476  
 Ion Ratio Lower Upper  
 43 100  
 72 28.2 13.3 39.8

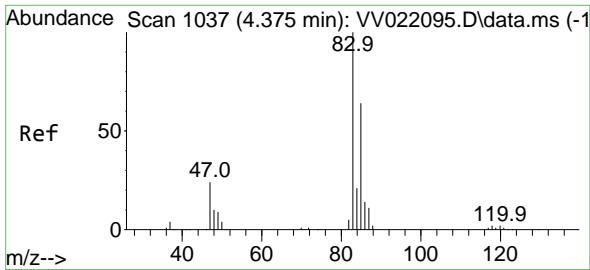


#23  
 Bromochloromethane  
 Concen: 38.013 ug/L  
 RT: 4.252 min Scan# 999  
 Delta R.T. 0.003 min  
 Lab File: VV022106.D  
 Acq: 07 Sep 2021 16:36



Tgt Ion:128 Resp: 55615  
 Ion Ratio Lower Upper  
 128 100  
 49 137.6 101.6 188.8  
 130 121.9 88.5 164.3  
 51 45.8 36.7 55.1

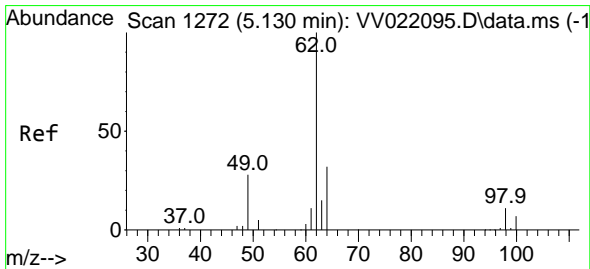
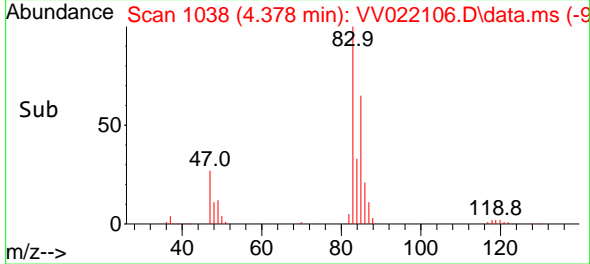
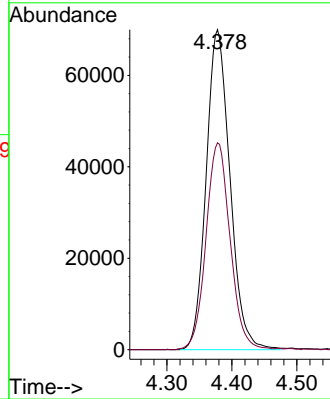
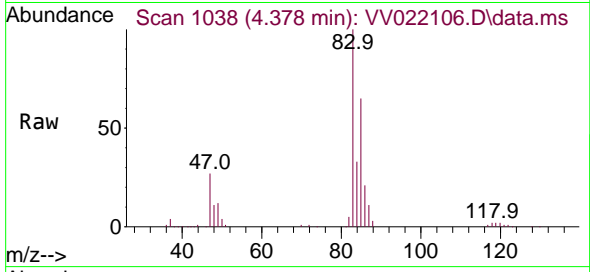




#25  
 Chloroform  
 Concen: 38.362 ug/L  
 RT: 4.378 min Scan# 1038  
 Delta R.T. 0.003 min  
 Lab File: VV022106.D  
 Acq: 07 Sep 2021 16:36

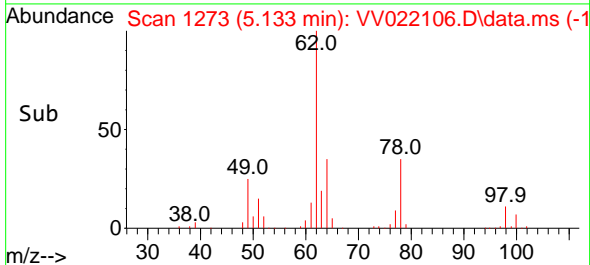
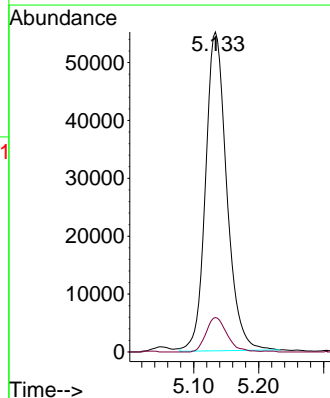
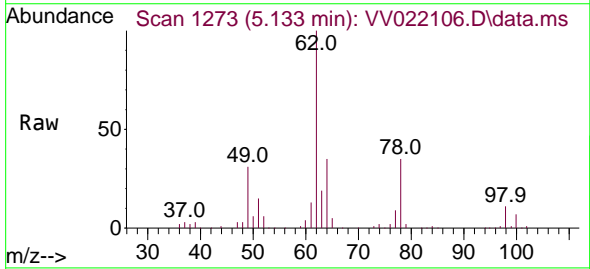
Instrument :  
 MSVOA\_V  
 ClientSampled :

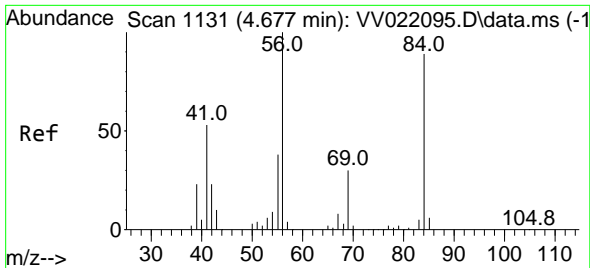
Tgt Ion: 83 Resp: 178528  
 Ion Ratio Lower Upper  
 83 100  
 85 64.7 46.3 85.9



#27  
 1,2-Dichloroethane  
 Concen: 40.160 ug/L  
 RT: 5.133 min Scan# 1273  
 Delta R.T. 0.003 min  
 Lab File: VV022106.D  
 Acq: 07 Sep 2021 16:36

Tgt Ion: 62 Resp: 125281  
 Ion Ratio Lower Upper  
 62 100  
 98 10.8 8.5 12.7



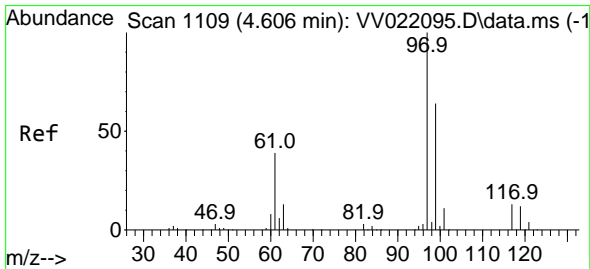
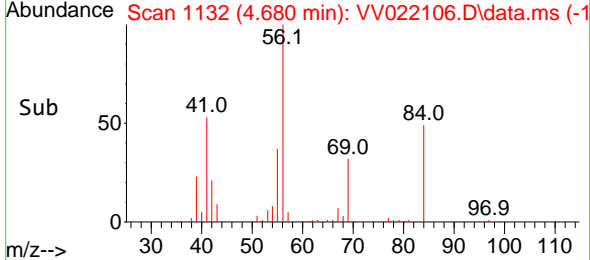
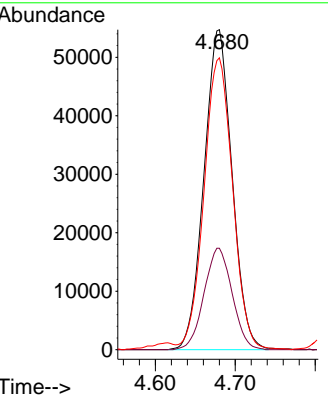
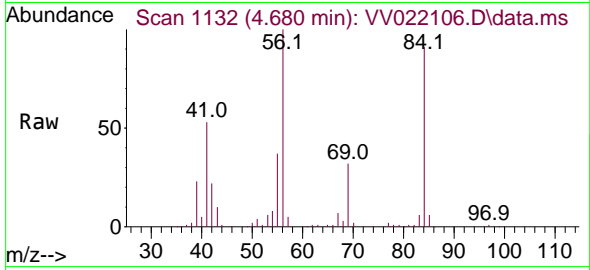


#29  
 Cyclohexane  
 Concen: 35.966 ug/L  
 RT: 4.680 min Scan# 1132  
 Delta R.T. 0.003 min  
 Lab File: VV022106.D  
 Acq: 07 Sep 2021 16:36

Instrument :  
 MSVOA\_V  
 ClientSampled :

Tgt Ion: 56 Resp: 133293

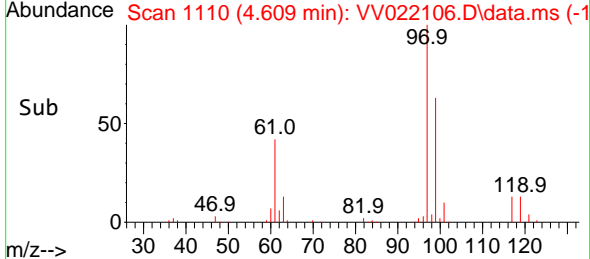
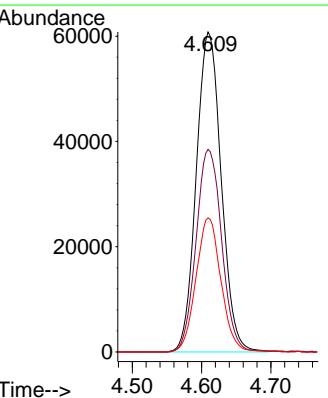
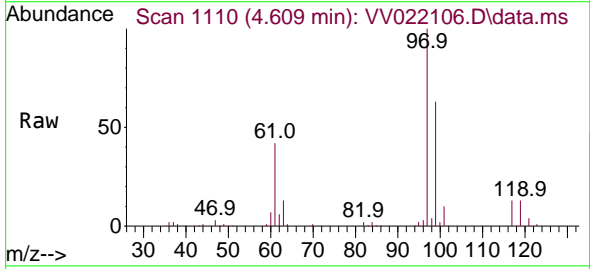
Ion	Ratio	Lower	Upper
56	100		
69	31.7	25.2	37.8
84	92.9	74.6	111.8

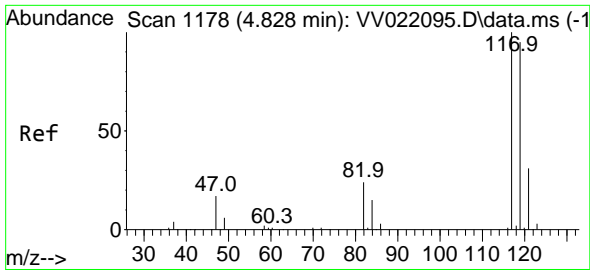


#30  
 1,1,1-Trichloroethane  
 Concen: 38.669 ug/L  
 RT: 4.609 min Scan# 1110  
 Delta R.T. 0.003 min  
 Lab File: VV022106.D  
 Acq: 07 Sep 2021 16:36

Tgt Ion: 97 Resp: 152364

Ion	Ratio	Lower	Upper
97	100		
99	64.9	52.0	78.0
61	41.9	31.8	47.8

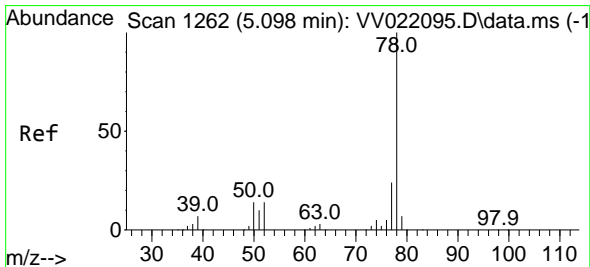
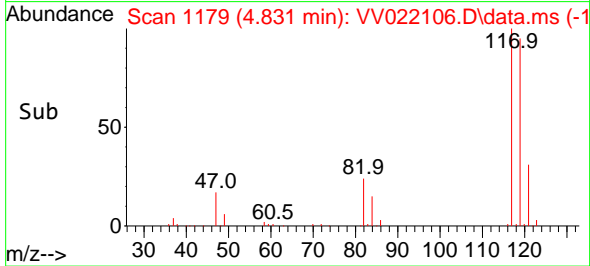
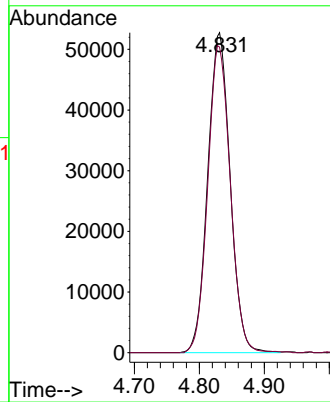
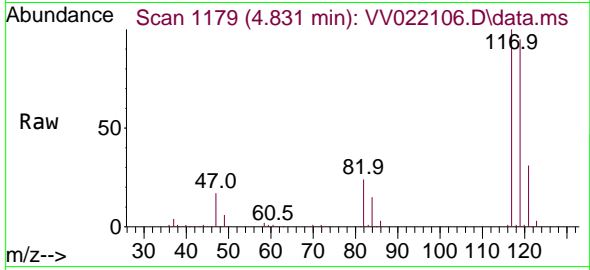




#31  
 Carbon tetrachloride  
 Concen: 37.322 ug/L  
 RT: 4.831 min Scan# 1179  
 Delta R.T. 0.003 min  
 Lab File: VV022106.D  
 Acq: 07 Sep 2021 16:36

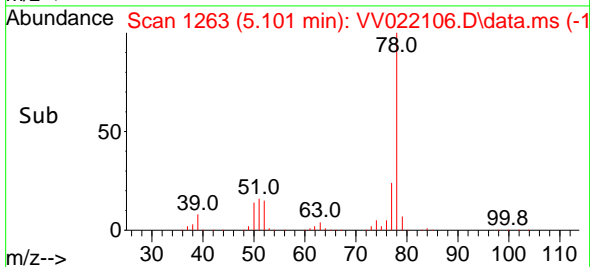
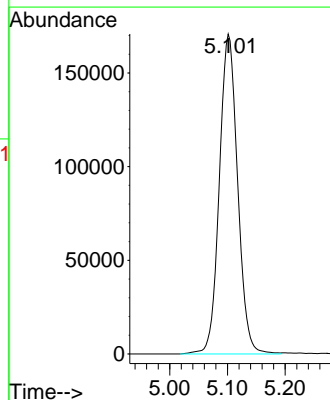
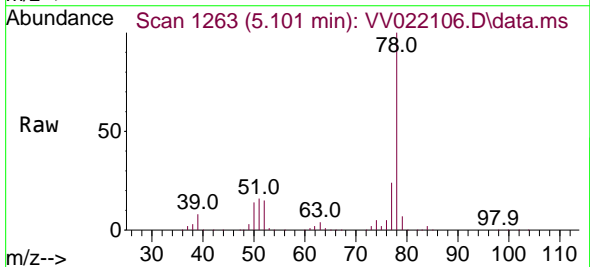
Instrument : MSVOA\_V  
 ClientSampled :

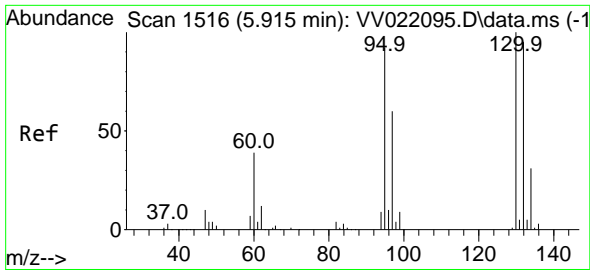
Tgt Ion:117 Resp: 126347  
 Ion Ratio Lower Upper  
 117 100  
 119 96.6 76.6 114.8



#33  
 Benzene  
 Concen: 38.909 ug/L  
 RT: 5.101 min Scan# 1263  
 Delta R.T. 0.003 min  
 Lab File: VV022106.D  
 Acq: 07 Sep 2021 16:36

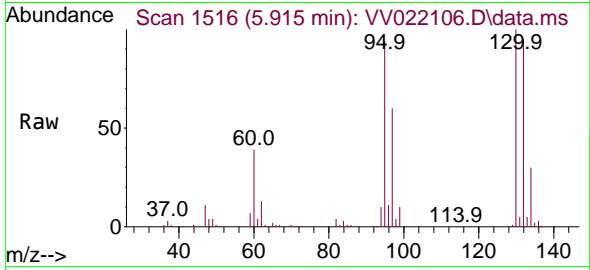
Tgt Ion: 78 Resp: 375303



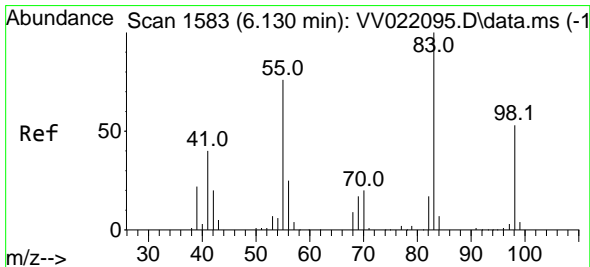
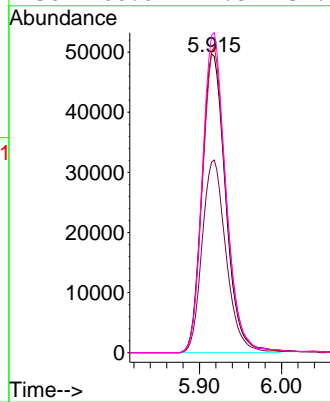
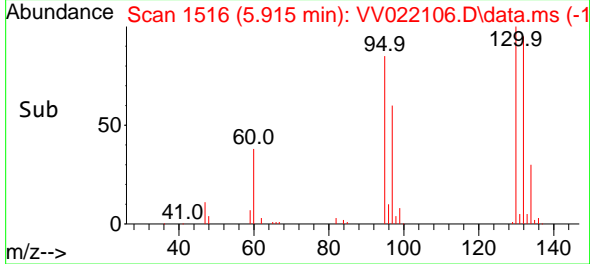


#34  
 Trichloroethene  
 Concen: 36.485 ug/L  
 RT: 5.915 min Scan# 1516  
 Delta R.T. 0.000 min  
 Lab File: VV022106.D  
 Acq: 07 Sep 2021 16:36

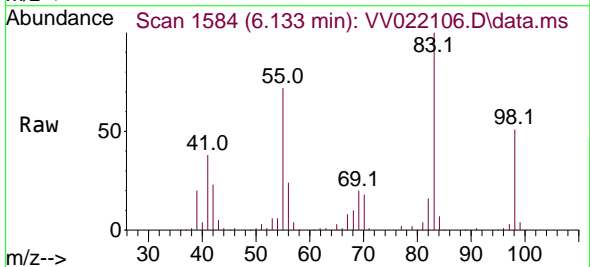
Instrument :  
 MSVOA\_V  
 ClientSampled :



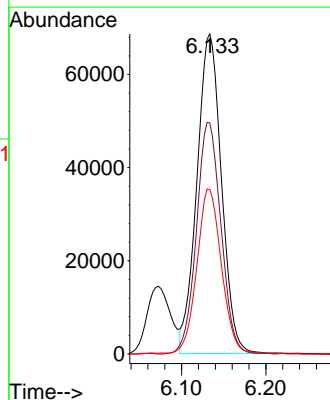
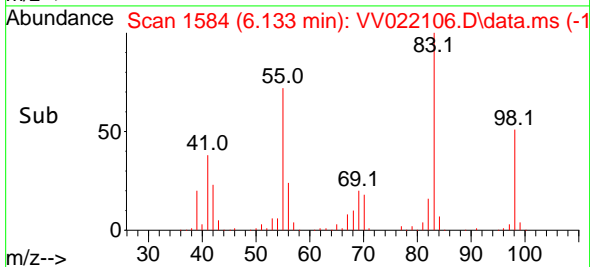
Tgt Ion: 95 Resp: 99685  
 Ion Ratio Lower Upper  
 95 100  
 97 63.7 44.1 81.9  
 132 100.7 70.7 131.3  
 130 106.0 74.8 139.0



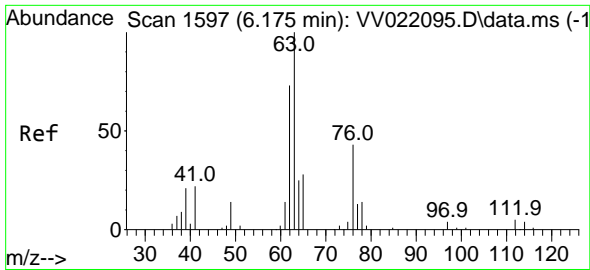
#35  
 Methylcyclohexane  
 Concen: 34.796 ug/L  
 RT: 6.133 min Scan# 1584  
 Delta R.T. 0.003 min  
 Lab File: VV022106.D  
 Acq: 07 Sep 2021 16:36



Tgt Ion: 83 Resp: 138981  
 Ion Ratio Lower Upper  
 83 100  
 55 72.4 56.8 85.2  
 98 51.4 39.9 59.9



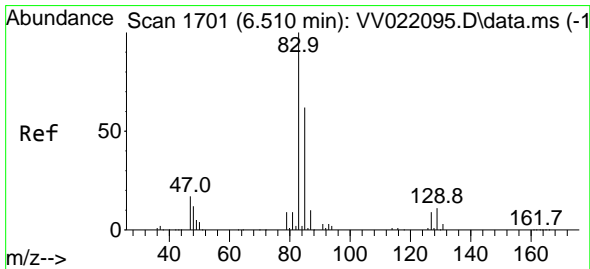
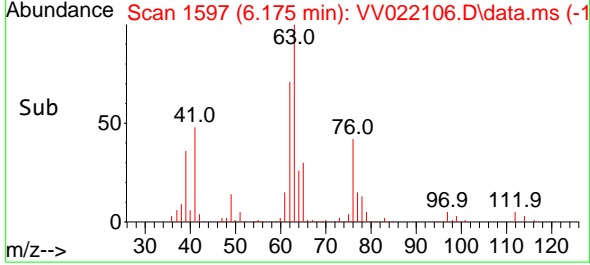
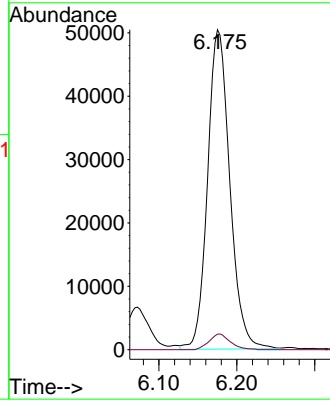
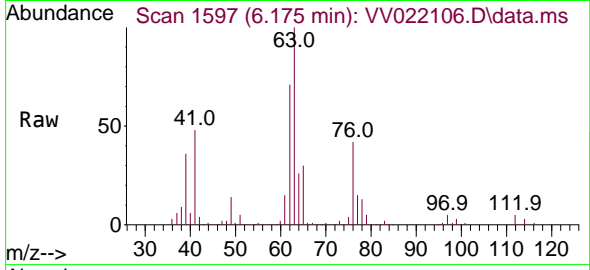




#37  
 1,2-Dichloropropane  
 Concen: 39.990 ug/L  
 RT: 6.175 min Scan# 1597  
 Delta R.T. 0.000 min  
 Lab File: VV022106.D  
 Acq: 07 Sep 2021 16:36

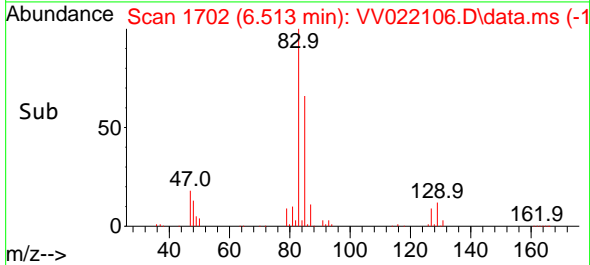
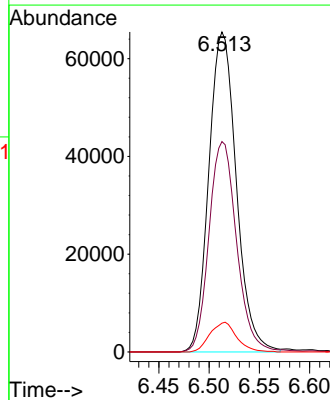
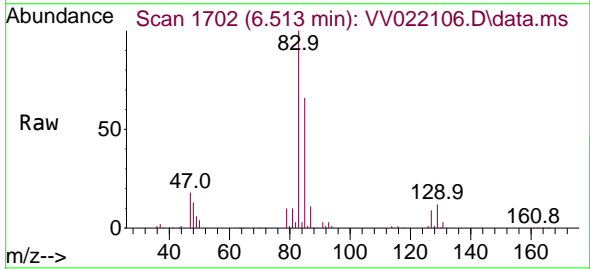
Instrument :  
 MSVOA\_V  
 ClientSampled :

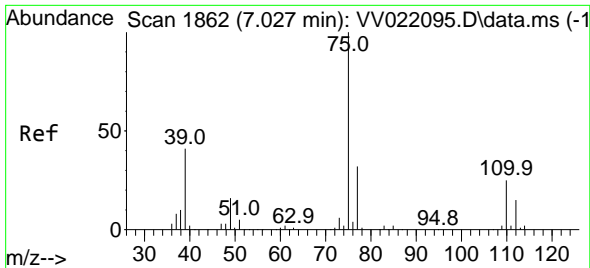
Tgt Ion: 63 Resp: 99987  
 Ion Ratio Lower Upper  
 63 100  
 112 4.6 3.8 5.6



#38  
 Bromodichloromethane  
 Concen: 38.936 ug/L  
 RT: 6.513 min Scan# 1702  
 Delta R.T. 0.003 min  
 Lab File: VV022106.D  
 Acq: 07 Sep 2021 16:36

Tgt Ion: 83 Resp: 124498  
 Ion Ratio Lower Upper  
 83 100  
 85 65.8 44.8 83.2  
 127 9.0 7.3 10.9

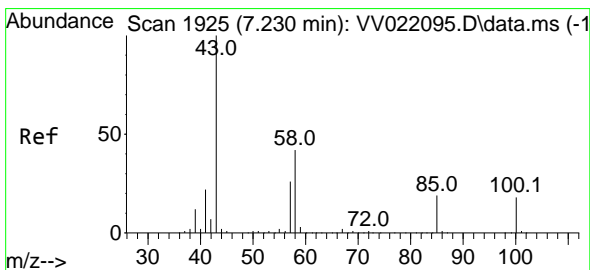
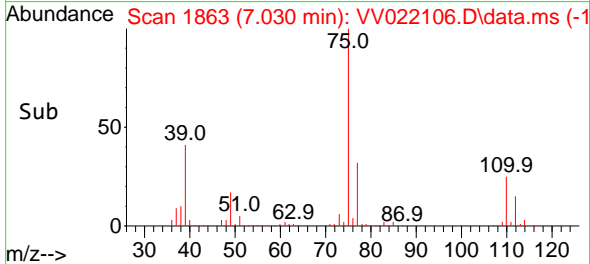
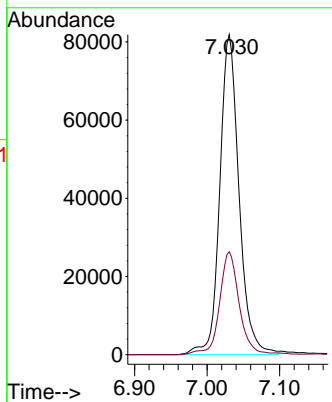
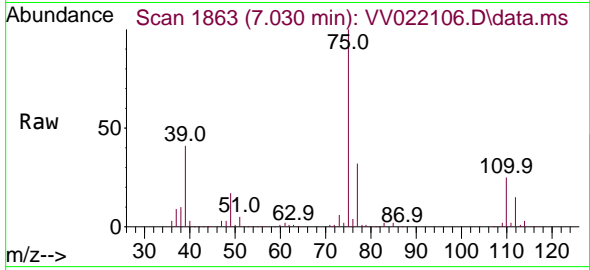




#39  
 cis-1,3-Dichloropropene  
 Concen: 39.093 ug/L  
 RT: 7.030 min Scan# 1863  
 Delta R.T. 0.003 min  
 Lab File: VV022106.D  
 Acq: 07 Sep 2021 16:36

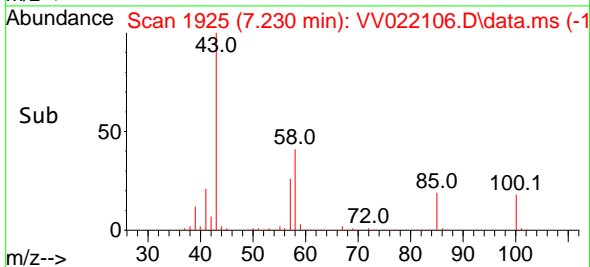
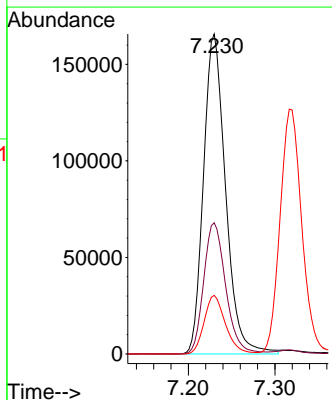
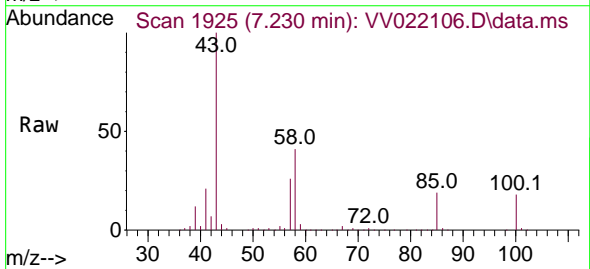
Instrument :  
 MSVOA\_V  
 ClientSampled :

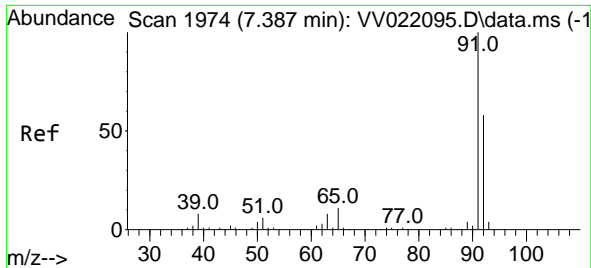
Tgt Ion: 75 Resp: 150912  
 Ion Ratio Lower Upper  
 75 100  
 77 32.2 22.7 42.1



#40  
 4-Methyl-2-pentanone  
 Concen: 86.617 ug/L  
 RT: 7.230 min Scan# 1925  
 Delta R.T. 0.000 min  
 Lab File: VV022106.D  
 Acq: 07 Sep 2021 16:36

Tgt Ion: 43 Resp: 293605  
 Ion Ratio Lower Upper  
 43 100  
 58 40.9 33.3 49.9  
 100 17.7 14.5 21.7

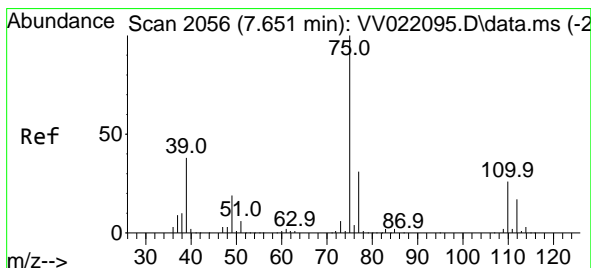
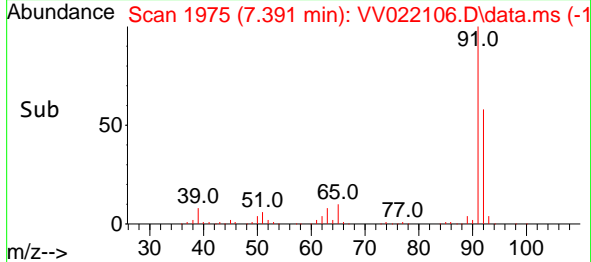
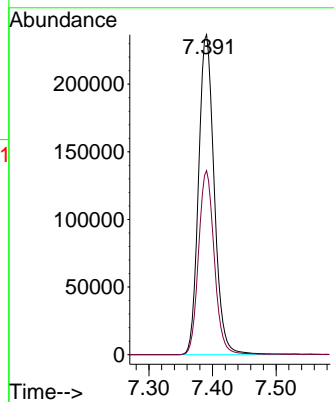
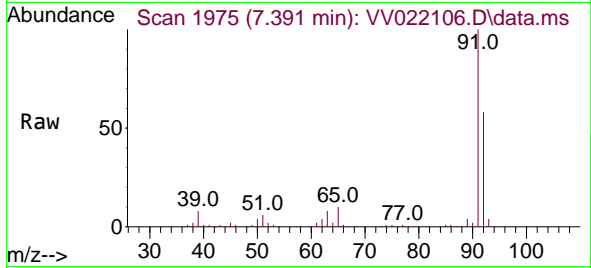




#42  
 Toluene  
 Concen: 38.925 ug/L  
 RT: 7.391 min Scan# 1975  
 Delta R.T. 0.003 min  
 Lab File: VV022106.D  
 Acq: 07 Sep 2021 16:36

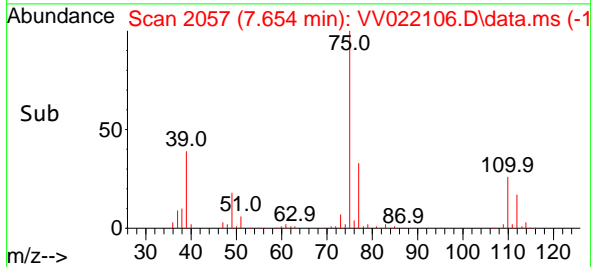
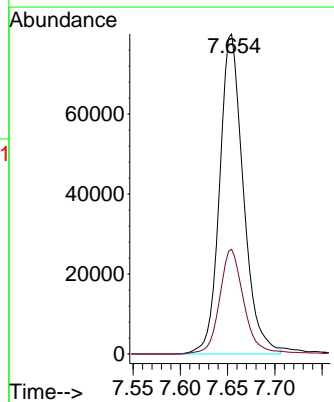
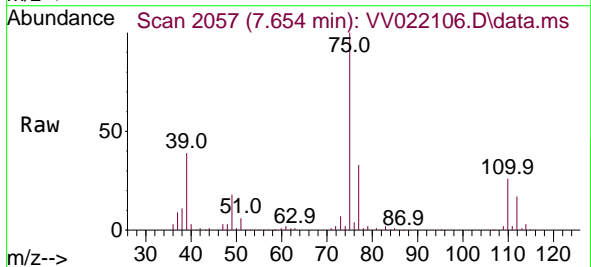
Instrument :  
 MSVOA\_V  
 ClientSampled :

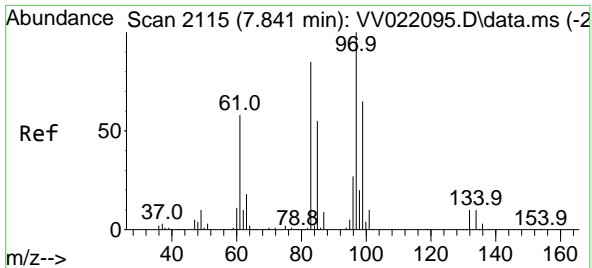
Tgt Ion: 91 Resp: 405222  
 Ion Ratio Lower Upper  
 91 100  
 92 57.5 40.3 74.8



#44  
 trans-1,3-Dichloropropene  
 Concen: 38.873 ug/L  
 RT: 7.654 min Scan# 2057  
 Delta R.T. 0.003 min  
 Lab File: VV022106.D  
 Acq: 07 Sep 2021 16:36

Tgt Ion: 75 Resp: 139663  
 Ion Ratio Lower Upper  
 75 100  
 77 32.7 21.8 40.6

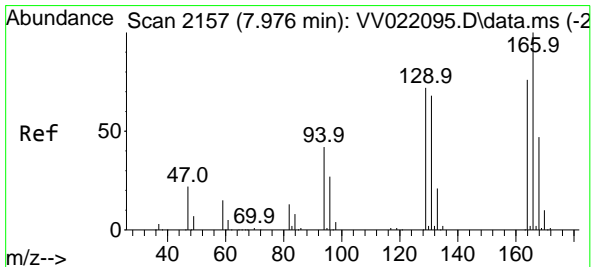
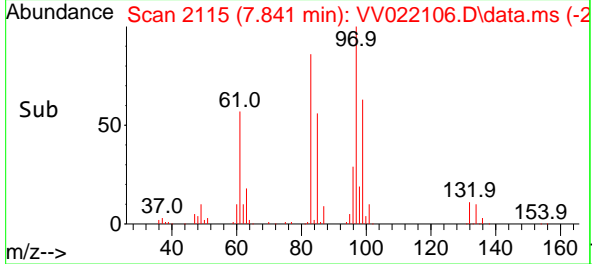
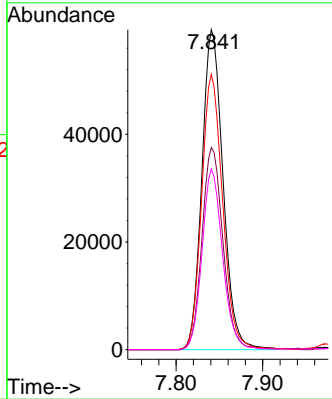
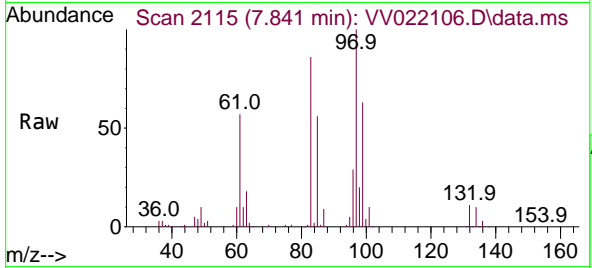




#45  
 1,1,2-Trichloroethane  
 Concen: 39.709 ug/L  
 RT: 7.841 min Scan# 2115  
 Delta R.T. 0.000 min  
 Lab File: VV022106.D  
 Acq: 07 Sep 2021 16:36

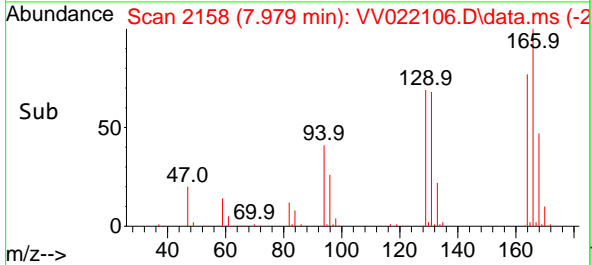
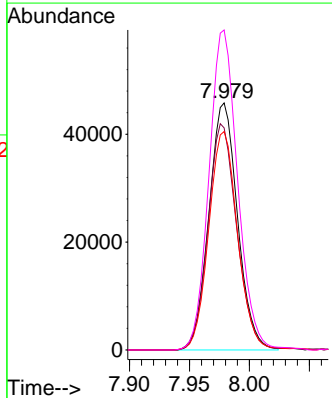
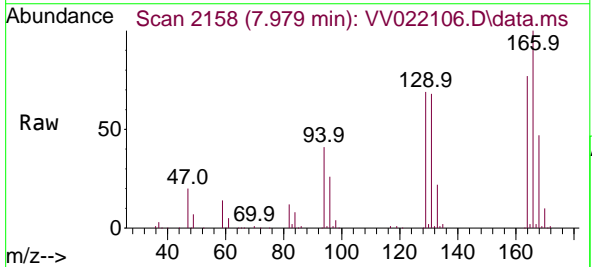
Instrument :  
 MSVOA\_V  
 ClientSampled :

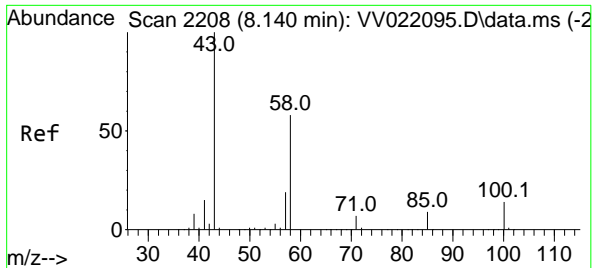
Tgt Ion	Resp	Lower	Upper
97	101022		
97	100		
99	63.2	43.8	81.4
83	86.0	58.8	109.2
85	56.4	38.4	71.4



#46  
 Tetrachloroethene  
 Concen: 35.773 ug/L  
 RT: 7.979 min Scan# 2158  
 Delta R.T. 0.003 min  
 Lab File: VV022106.D  
 Acq: 07 Sep 2021 16:36

Tgt Ion	Resp	Lower	Upper
164	75998		
164	100		
129	89.9	62.9	116.9
131	88.4	61.0	113.4
166	129.5	90.6	168.3



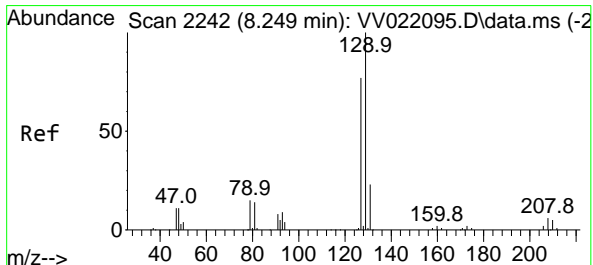
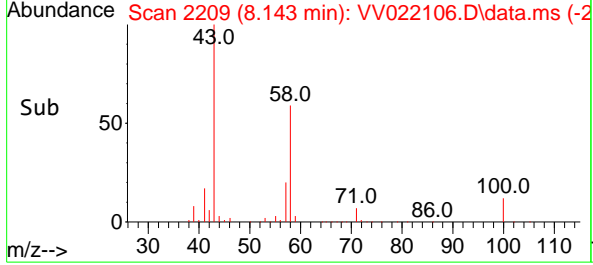
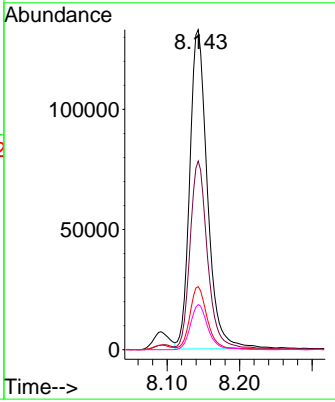
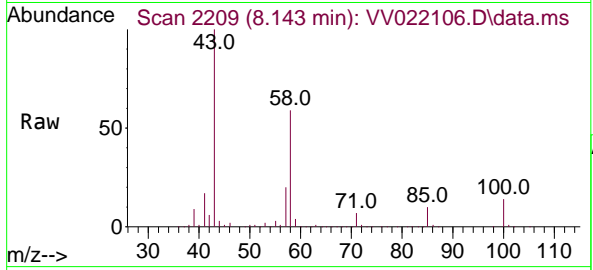


#48  
 2-Hexanone  
 Concen: 85.678 ug/L  
 RT: 8.143 min Scan# 2209  
 Delta R.T. 0.003 min  
 Lab File: VV022106.D  
 Acq: 07 Sep 2021 16:36

Instrument : MSVOA\_V  
 ClientSampled :

Tgt Ion: 43 Resp: 225336

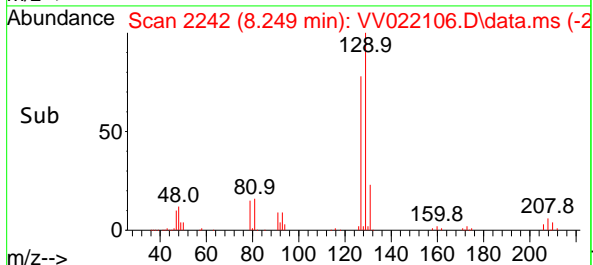
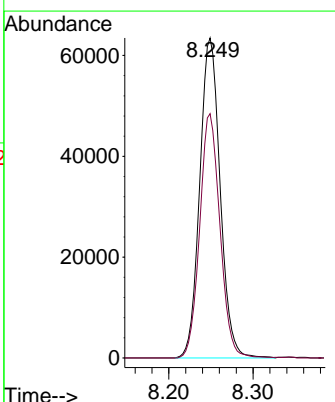
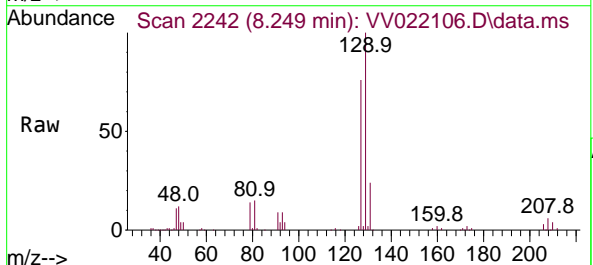
Ion	Ratio	Lower	Upper
43	100		
58	56.8	47.5	71.3
57	18.9	15.9	23.9
100	13.7	11.4	17.2

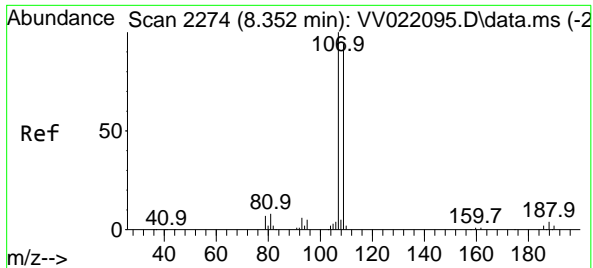


#49  
 Dibromochloromethane  
 Concen: 39.293 ug/L  
 RT: 8.249 min Scan# 2242  
 Delta R.T. 0.000 min  
 Lab File: VV022106.D  
 Acq: 07 Sep 2021 16:36

Tgt Ion: 129 Resp: 107003

Ion	Ratio	Lower	Upper
129	100		
127	76.3	54.1	100.5

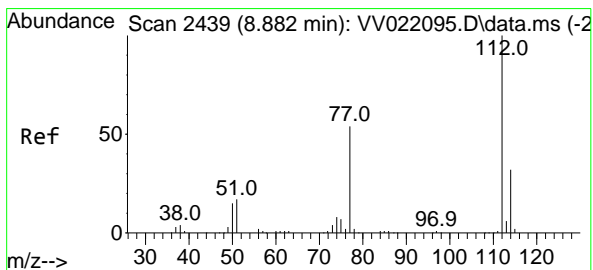
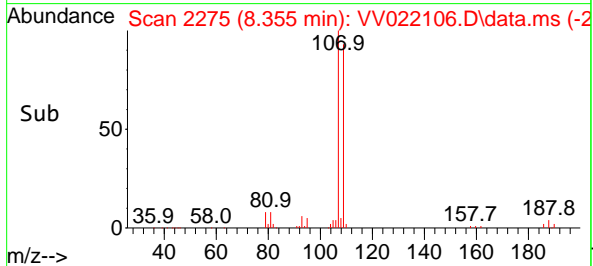
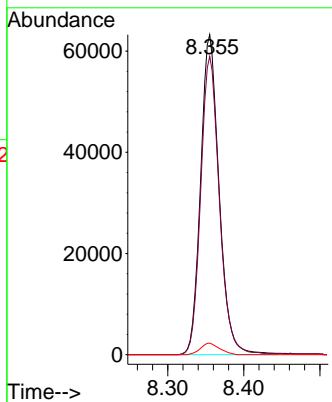
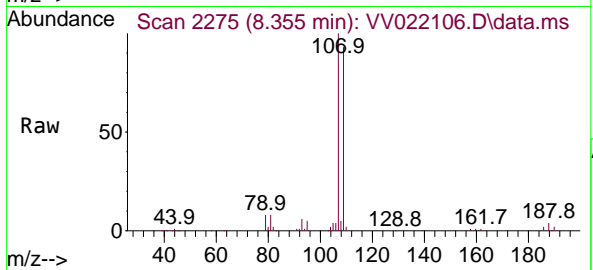




#50  
 1,2-Dibromoethane  
 Concen: 39.191 ug/L  
 RT: 8.355 min Scan# 2275  
 Delta R.T. 0.003 min  
 Lab File: VV022106.D  
 Acq: 07 Sep 2021 16:36

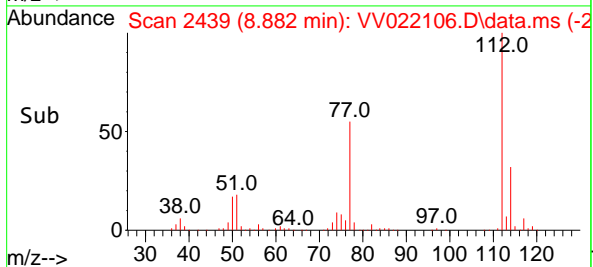
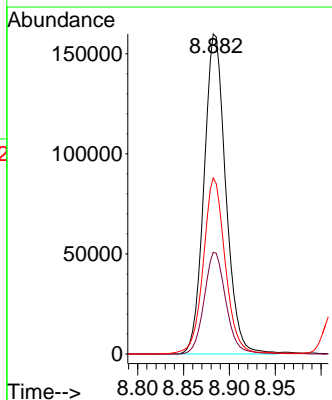
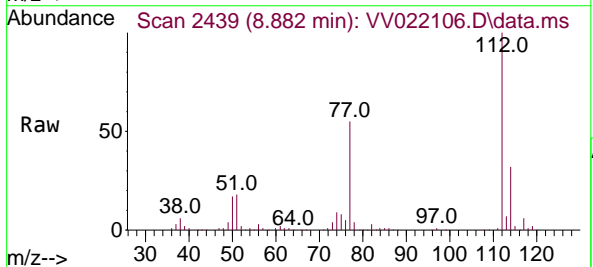
Instrument :  
 MSVOA\_V  
 ClientSampled :

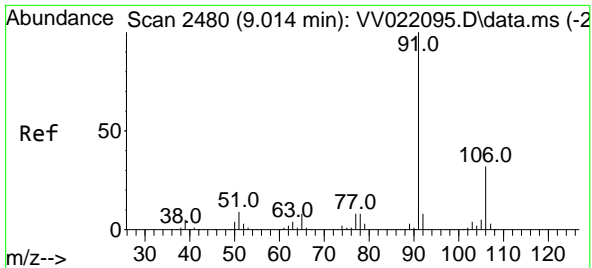
Tgt Ion	Resp	Lower	Upper
107	107006		
109	93.2	65.5	121.6
188	3.6	3.2	4.8



#51  
 Chlorobenzene  
 Concen: 37.673 ug/L  
 RT: 8.882 min Scan# 2439  
 Delta R.T. 0.000 min  
 Lab File: VV022106.D  
 Acq: 07 Sep 2021 16:36

Tgt Ion	Resp	Lower	Upper
112	263684		
114	31.8	22.0	41.0
77	55.0	43.2	64.8

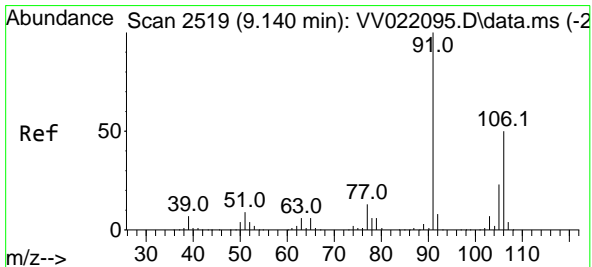
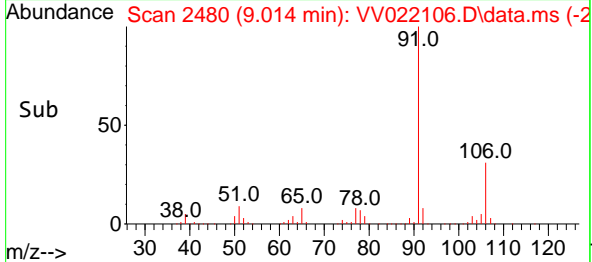
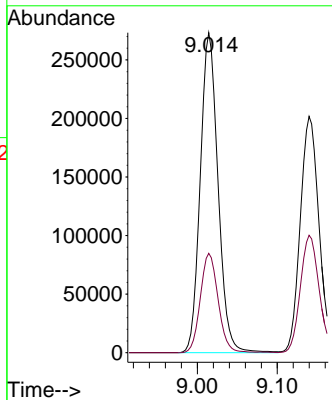
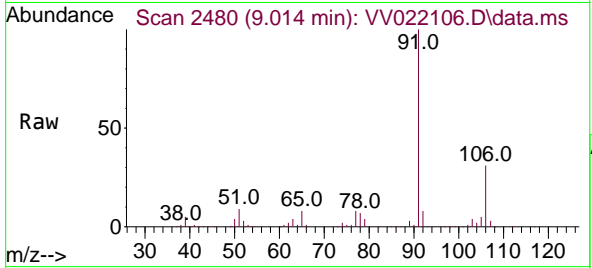




#52  
 Ethylbenzene  
 Concen: 37.500 ug/L  
 RT: 9.014 min Scan# 2480  
 Delta R.T. 0.000 min  
 Lab File: VV022106.D  
 Acq: 07 Sep 2021 16:36

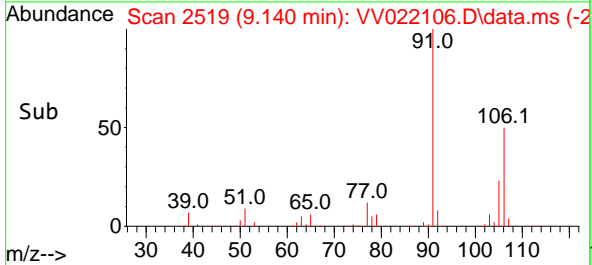
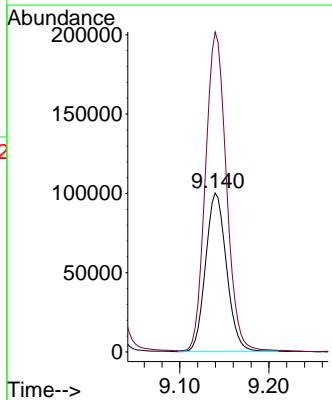
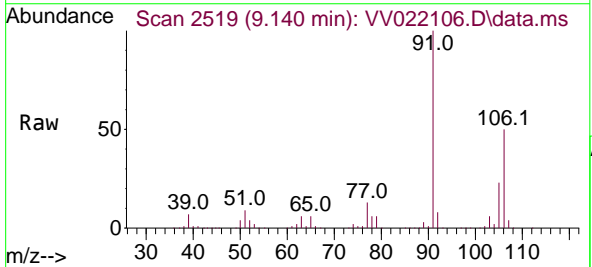
Instrument :  
 MSVOA\_V  
 ClientSampled :

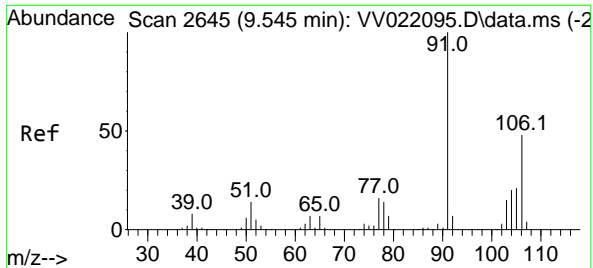
Tgt Ion: 91 Resp: 422604  
 Ion Ratio Lower Upper  
 91 100  
 106 31.1 21.7 40.3



#53  
 m,p-Xylene  
 Concen: 37.278 ug/L  
 RT: 9.140 min Scan# 2519  
 Delta R.T. 0.000 min  
 Lab File: VV022106.D  
 Acq: 07 Sep 2021 16:36

Tgt Ion: 106 Resp: 163286  
 Ion Ratio Lower Upper  
 106 100  
 91 201.2 139.1 258.3

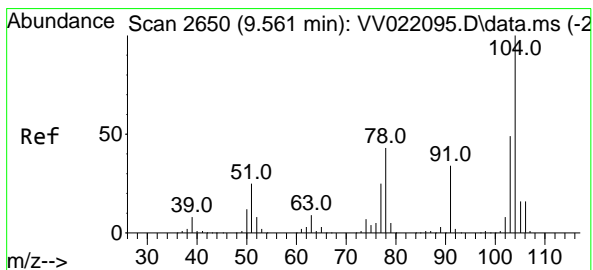
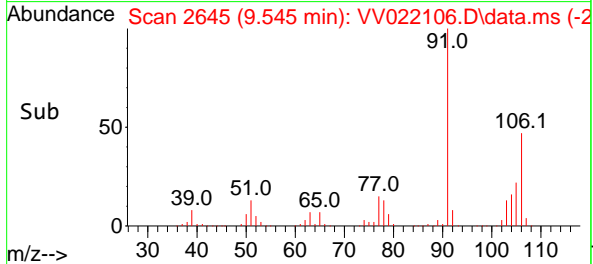
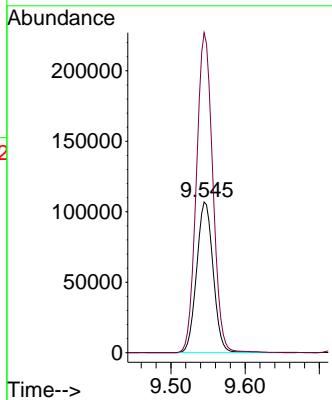
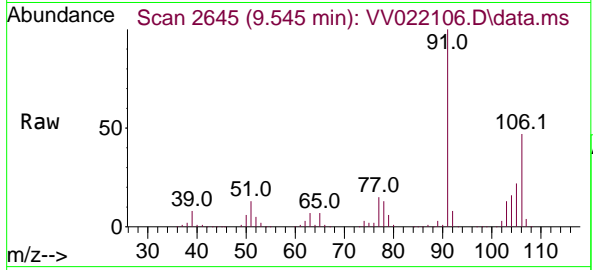




#54  
 o-Xylene  
 Concen: 38.199 ug/L  
 RT: 9.545 min Scan# 2645  
 Delta R.T. 0.000 min  
 Lab File: VV022106.D  
 Acq: 07 Sep 2021 16:36

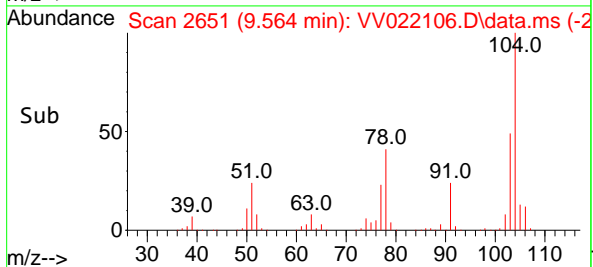
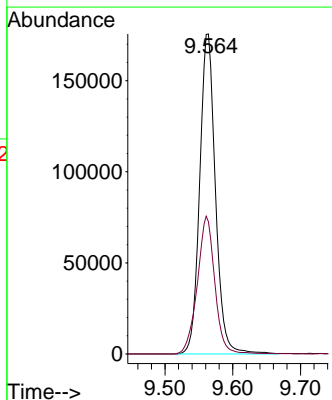
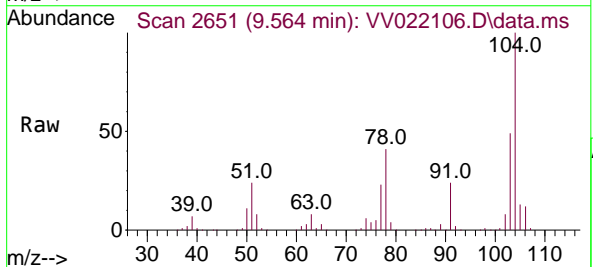
Instrument :  
 MSVOA\_V  
 ClientSampled :

Tgt Ion:106 Resp: 165554  
 Ion Ratio Lower Upper  
 106 100  
 91 212.4 150.1 278.9

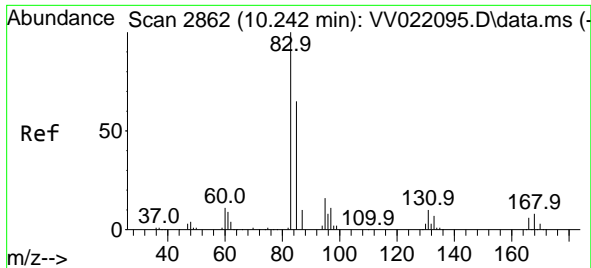


#55  
 Styrene  
 Concen: 38.364 ug/L  
 RT: 9.564 min Scan# 2651  
 Delta R.T. 0.003 min  
 Lab File: VV022106.D  
 Acq: 07 Sep 2021 16:36

Tgt Ion:104 Resp: 283753  
 Ion Ratio Lower Upper  
 104 100  
 78 41.3 28.6 53.2





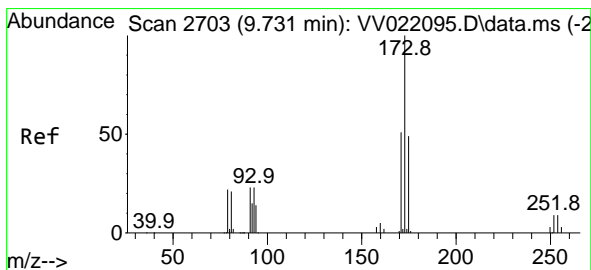
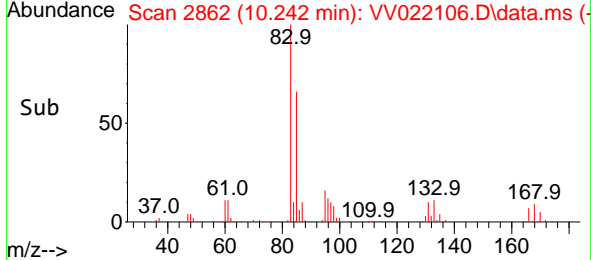
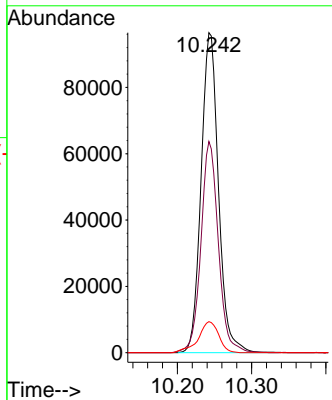
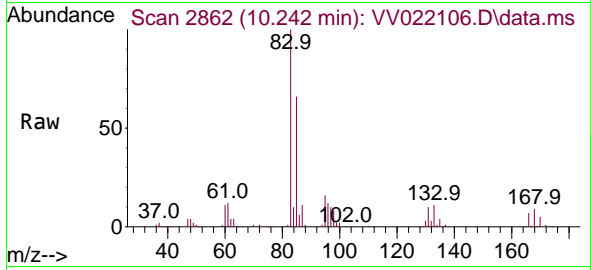


#57  
 1,1,2,2-Tetrachloroethane  
 Concen: 42.505 ug/L  
 RT: 10.242 min Scan# 2862  
 Delta R.T. 0.000 min  
 Lab File: VV022106.D  
 Acq: 07 Sep 2021 16:36

Instrument : MSVOA\_V  
 ClientSampled :

Tgt Ion: 83 Resp: 156676

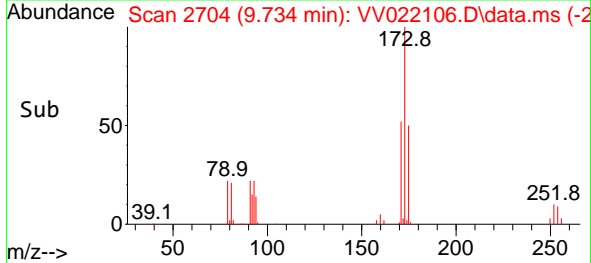
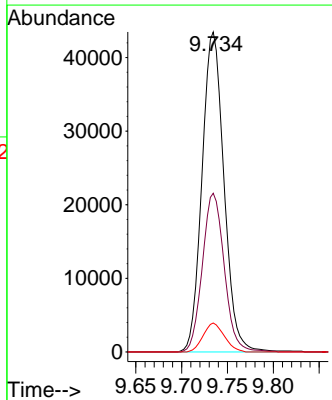
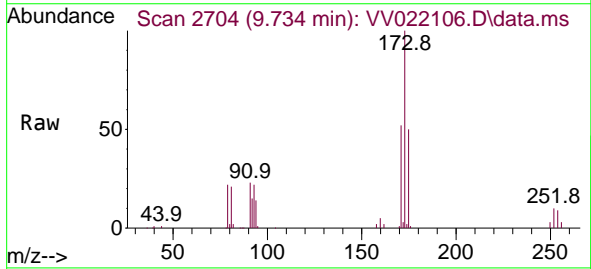
Ion	Ratio	Lower	Upper
83	100		
85	66.0	44.7	83.1
131	9.7	8.2	12.2

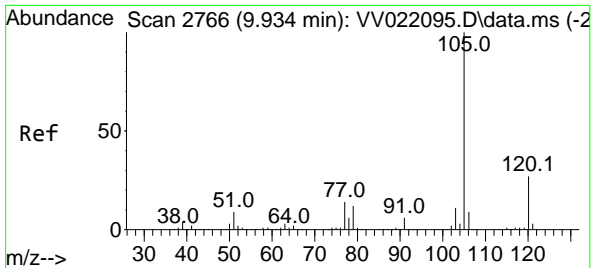


#59  
 Bromoform  
 Concen: 39.688 ug/L  
 RT: 9.734 min Scan# 2704  
 Delta R.T. 0.003 min  
 Lab File: VV022106.D  
 Acq: 07 Sep 2021 16:36

Tgt Ion: 173 Resp: 72350

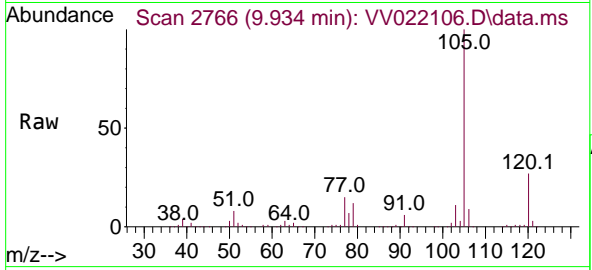
Ion	Ratio	Lower	Upper
173	100		
175	49.5	38.8	58.2
254	8.7	7.0	10.4



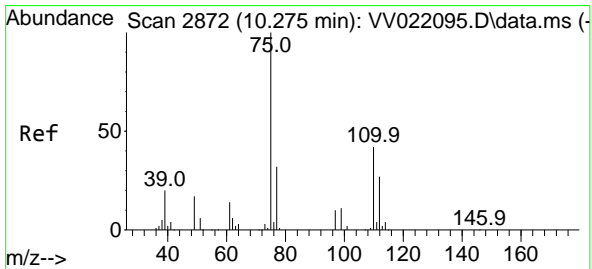
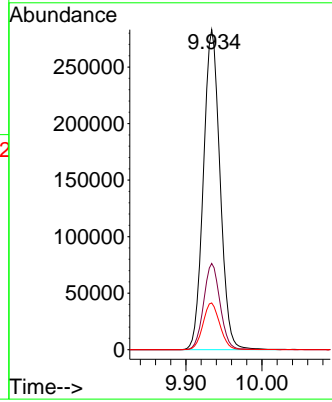
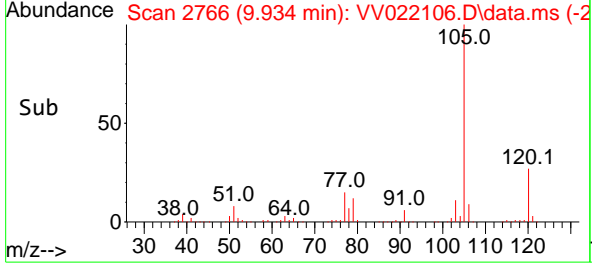


#60  
 Isopropylbenzene  
 Concen: 39.857 ug/L  
 RT: 9.934 min Scan# 2766  
 Delta R.T. 0.000 min  
 Lab File: VV022106.D  
 Acq: 07 Sep 2021 16:36

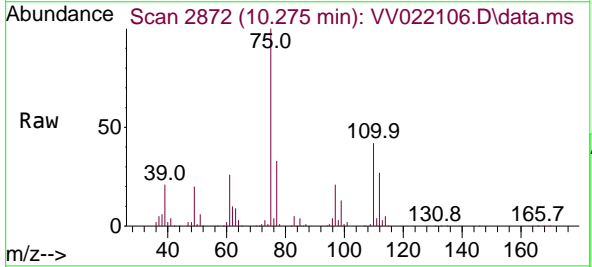
Instrument :  
 MSVOA\_V  
 ClientSampled :



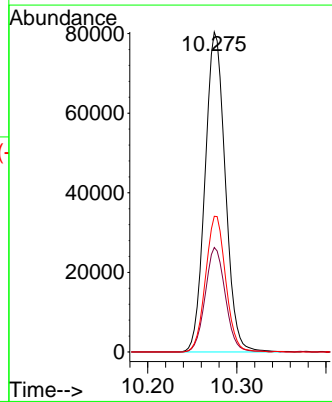
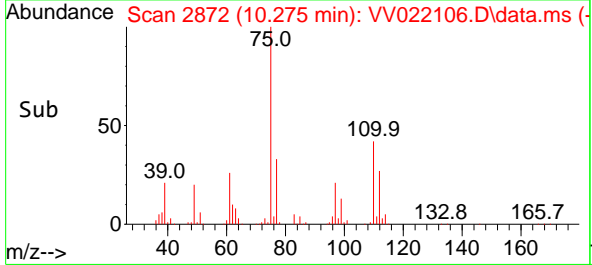
Tgt Ion:105 Resp: 429854  
 Ion Ratio Lower Upper  
 105 100  
 120 26.7 21.5 32.3  
 77 14.8 11.8 17.6

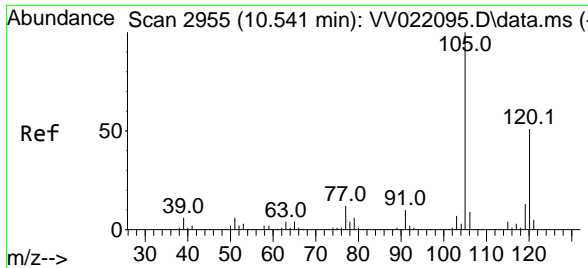


#61  
 1,2,3-Trichloropropane  
 Concen: 42.685 ug/L  
 RT: 10.275 min Scan# 2872  
 Delta R.T. 0.000 min  
 Lab File: VV022106.D  
 Acq: 07 Sep 2021 16:36



Tgt Ion: 75 Resp: 126976  
 Ion Ratio Lower Upper  
 75 100  
 77 32.3 26.2 39.2  
 110 42.2 33.8 50.6

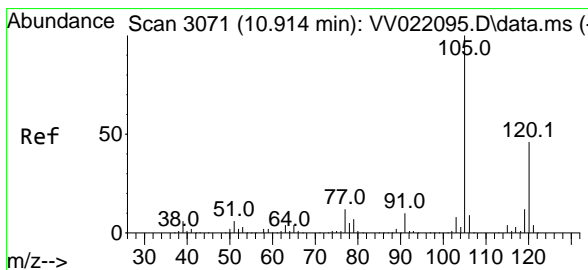
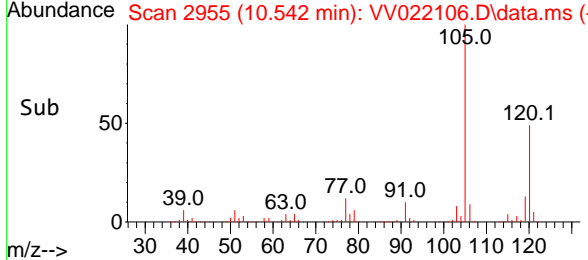
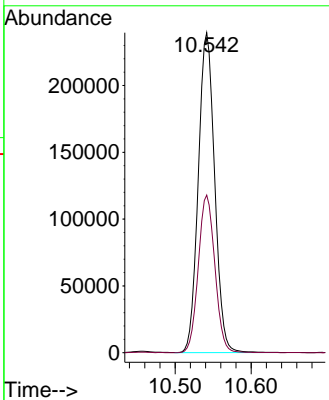
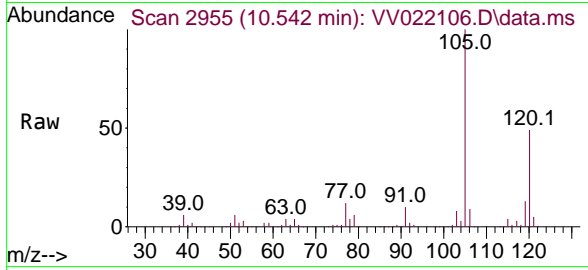




#62  
 1,3,5-Trimethylbenzene  
 Concen: 39.530 ug/L  
 RT: 10.542 min Scan# 2955  
 Delta R.T. 0.000 min  
 Lab File: VV022106.D  
 Acq: 07 Sep 2021 16:36

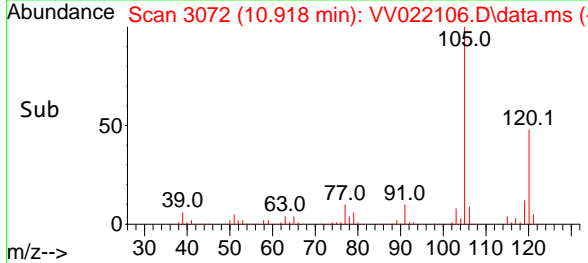
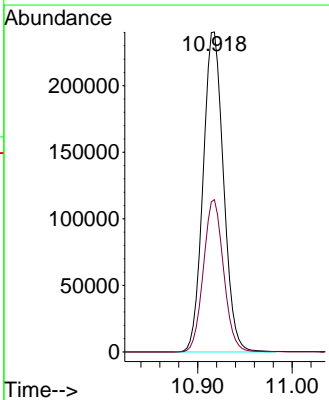
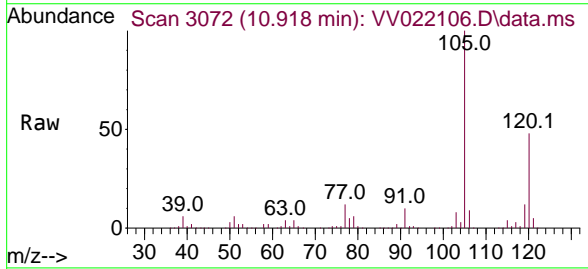
Instrument :  
 MSVOA\_V  
 ClientSampled :

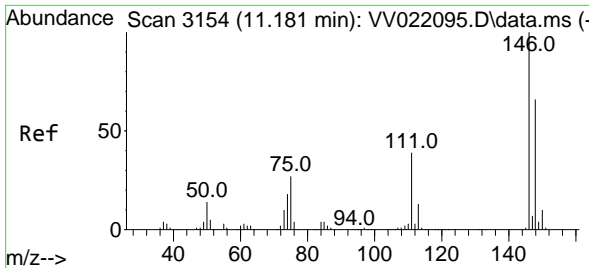
Tgt Ion:105 Resp: 357918  
 Ion Ratio Lower Upper  
 105 100  
 120 49.9 39.6 59.4



#63  
 1,2,4-Trimethylbenzene  
 Concen: 39.203 ug/L  
 RT: 10.918 min Scan# 3072  
 Delta R.T. 0.003 min  
 Lab File: VV022106.D  
 Acq: 07 Sep 2021 16:36

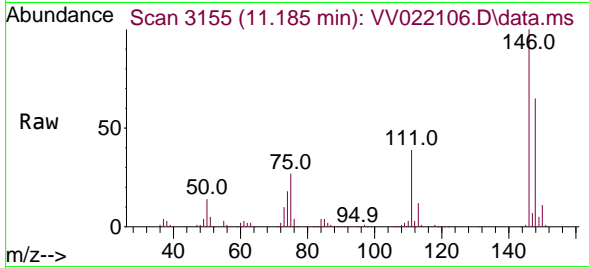
Tgt Ion:105 Resp: 360784  
 Ion Ratio Lower Upper  
 105 100  
 120 47.1 37.4 56.0



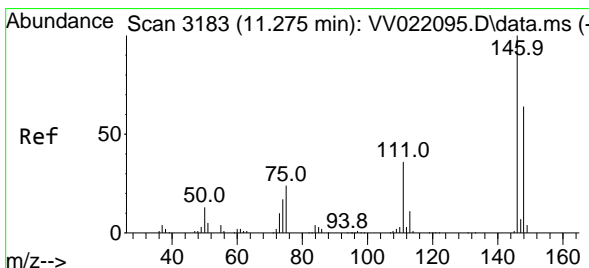
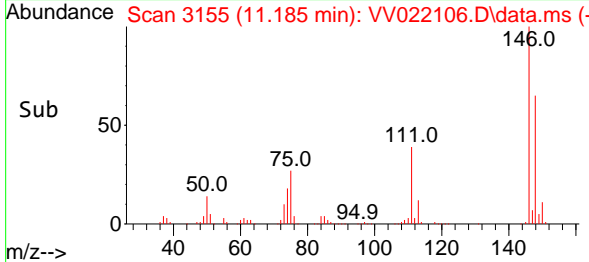
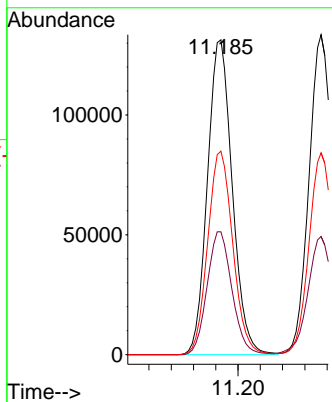


#64  
 1,3-Dichlorobenzene  
 Concen: 37.143 ug/L  
 RT: 11.185 min Scan# 3155  
 Delta R.T. 0.003 min  
 Lab File: VV022106.D  
 Acq: 07 Sep 2021 16:36

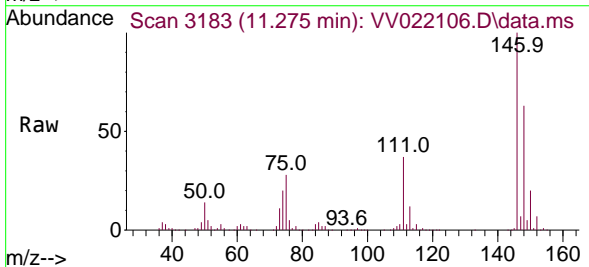
Instrument :  
 MSVOA\_V  
 ClientSampled :



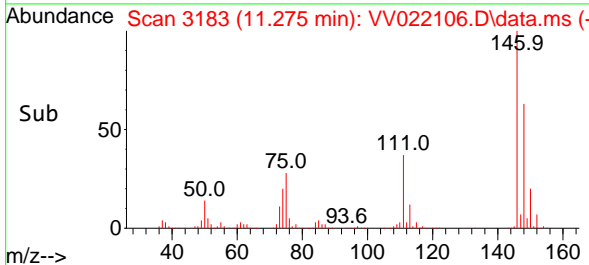
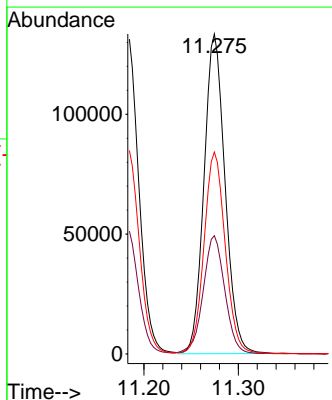
Tgt Ion:146 Resp: 203390  
 Ion Ratio Lower Upper  
 146 100  
 111 39.0 26.9 50.1  
 148 64.6 45.5 84.5

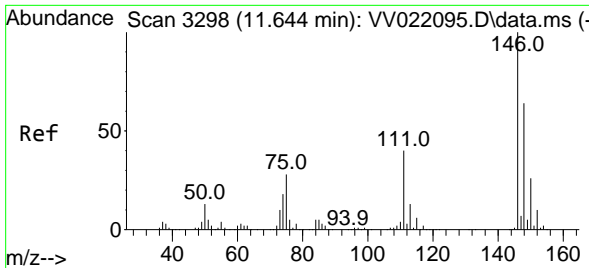


#65  
 1,4-Dichlorobenzene  
 Concen: 36.793 ug/L  
 RT: 11.275 min Scan# 3183  
 Delta R.T. 0.000 min  
 Lab File: VV022106.D  
 Acq: 07 Sep 2021 16:36



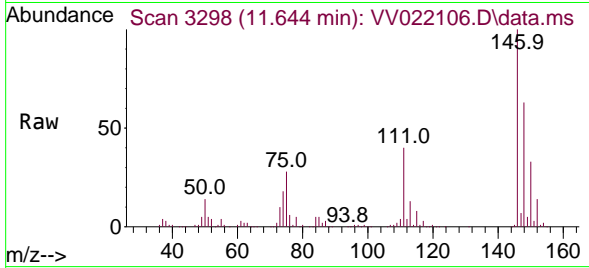
Tgt Ion:146 Resp: 206162  
 Ion Ratio Lower Upper  
 146 100  
 111 37.0 25.3 46.9  
 148 63.1 44.4 82.5



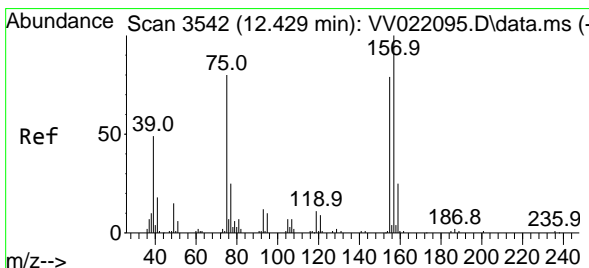
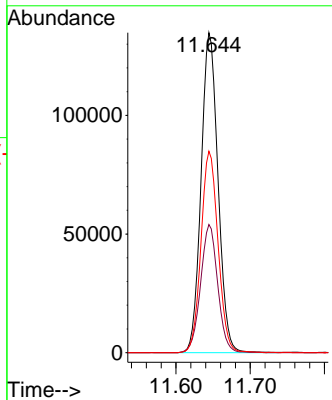
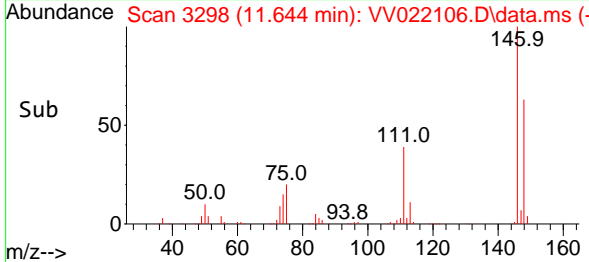


#67  
 1,2-Dichlorobenzene  
 Concen: 39.198 ug/L  
 RT: 11.644 min Scan# 3298  
 Delta R.T. 0.000 min  
 Lab File: VV022106.D  
 Acq: 07 Sep 2021 16:36

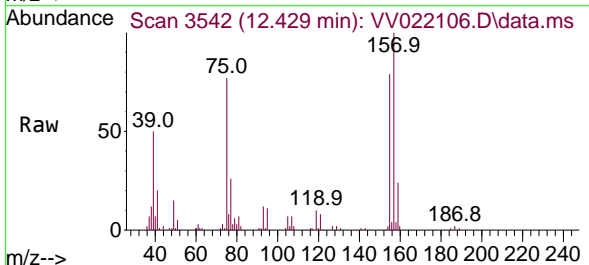
Instrument :  
 MSVOA\_V  
 ClientSampled :



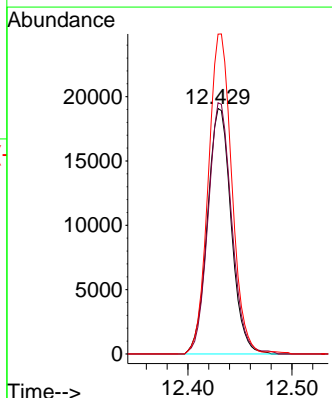
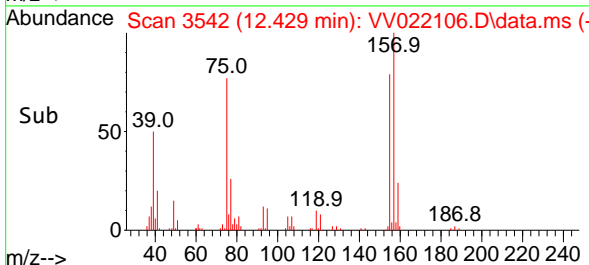
Tgt Ion:146 Resp: 213126  
 Ion Ratio Lower Upper  
 146 100  
 111 40.0 31.6 47.4  
 148 62.9 50.6 75.8

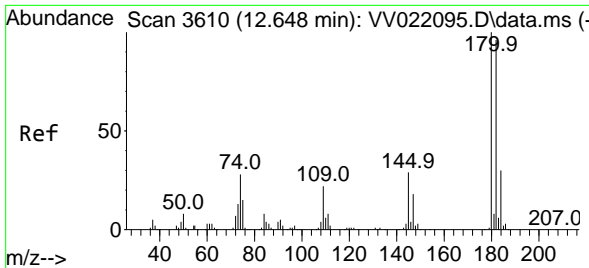


#68  
 1,2-Dibromo-3-chloropropane  
 Concen: 42.082 ug/L  
 RT: 12.429 min Scan# 3542  
 Delta R.T. 0.000 min  
 Lab File: VV022106.D  
 Acq: 07 Sep 2021 16:36



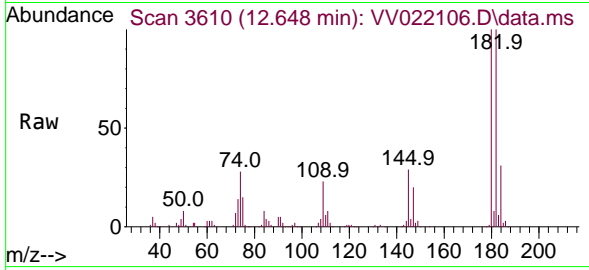
Tgt Ion: 75 Resp: 30170  
 Ion Ratio Lower Upper  
 75 100  
 155 102.3 79.8 119.6  
 157 130.3 98.3 147.5



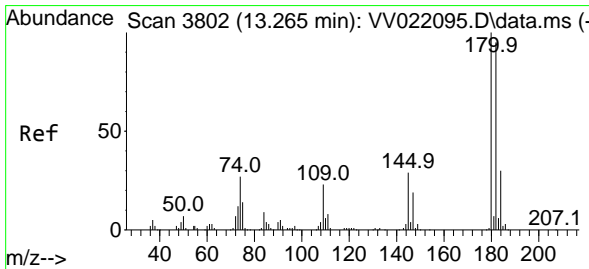
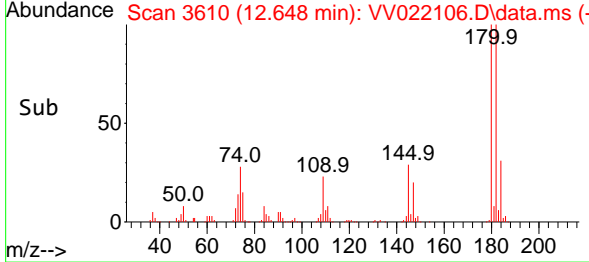
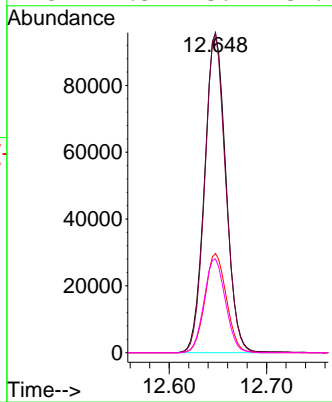


#69  
 1,3,5-Trichlorobenzene  
 Concen: 35.639 ug/L  
 RT: 12.648 min Scan# 3610  
 Delta R.T. 0.000 min  
 Lab File: VV022106.D  
 Acq: 07 Sep 2021 16:36

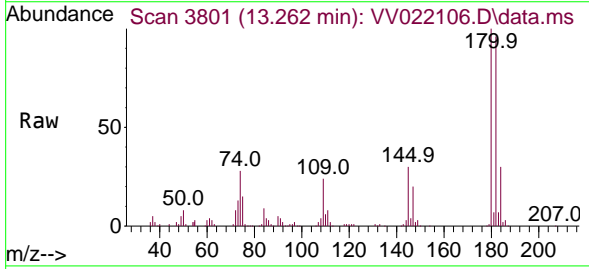
Instrument :  
 MSVOA\_V  
 ClientSampled :



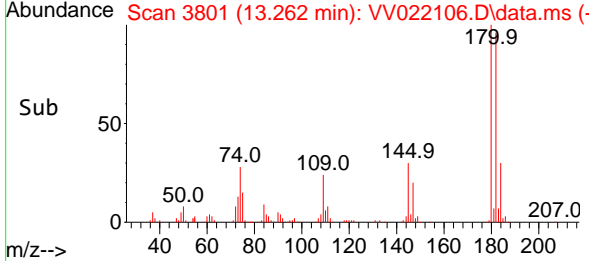
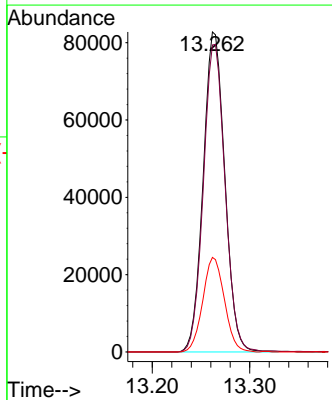
Tgt Ion:180 Resp: 145925  
 Ion Ratio Lower Upper  
 180 100  
 182 97.5 76.4 114.6  
 184 31.1 24.0 36.0  
 145 29.3 23.1 34.7

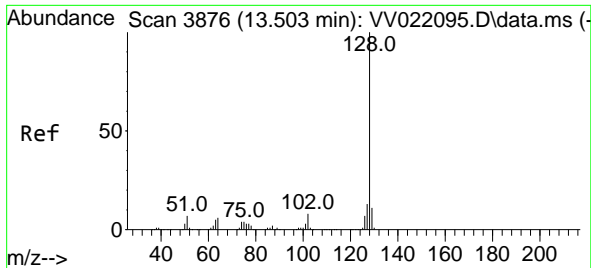


#70  
 1,2,4-trichlorobenzene  
 Concen: 35.492 ug/L  
 RT: 13.262 min Scan# 3801  
 Delta R.T. -0.003 min  
 Lab File: VV022106.D  
 Acq: 07 Sep 2021 16:36



Tgt Ion:180 Resp: 127839  
 Ion Ratio Lower Upper  
 180 100  
 182 96.2 75.9 113.9  
 145 29.5 23.8 35.6



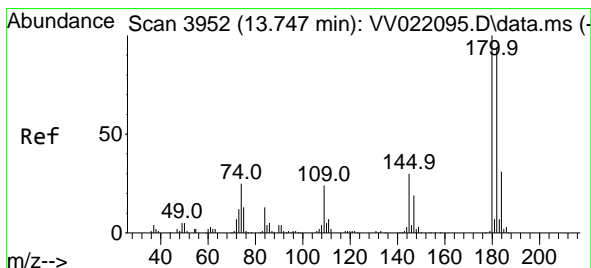
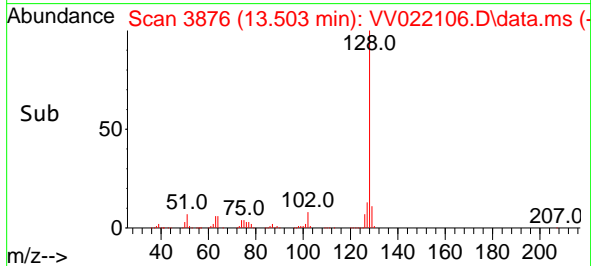
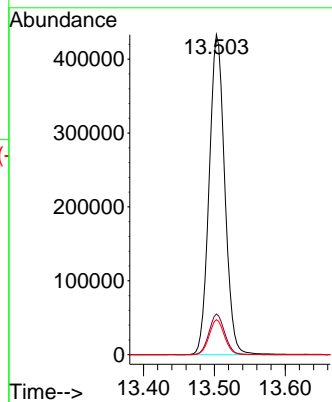
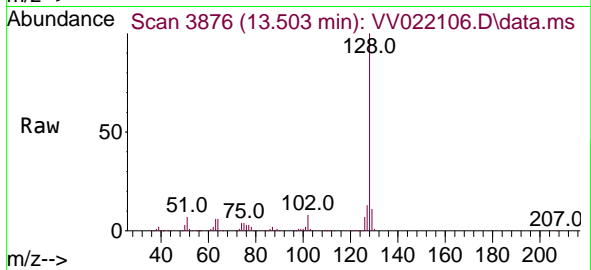


#71  
 Naphthalene  
 Concen: 63.715 ug/L  
 RT: 13.503 min Scan# 3876  
 Delta R.T. 0.000 min  
 Lab File: VV022106.D  
 Acq: 07 Sep 2021 16:36

Instrument :  
 MSVOA\_V  
 ClientSampled :

Tgt Ion:128 Resp: 660166

Ion	Ratio	Lower	Upper
128	100		
127	12.8	10.1	15.1
129	10.8	8.7	13.1



#72  
 1,2,3-Trichlorobenzene  
 Concen: 39.157 ug/L  
 RT: 13.744 min Scan# 3951  
 Delta R.T. -0.003 min  
 Lab File: VV022106.D  
 Acq: 07 Sep 2021 16:36

Tgt Ion:180 Resp: 137567

Ion	Ratio	Lower	Upper
180	100		
182	94.7	76.3	114.5
145	31.8	25.4	38.0

