

Data Path : Z:\VOASRV\HPCHEM1\MSVOA V\DATA\VV091020\
 Data File : VV018184.D
 Acq On : 10 Sep 2020 17:04
 Operator : SY/MD
 Sample : MDL02
 Misc : 5.0mL/MSVOA V/WATER
 ALS Vial : 18 Sample Multiplier: 1

Instrument :
 MSVOA_V
 ClientSampled :
 MDL02

Manual Integrations
 APPROVED

MMDadoda
 9/11/2020 10:28:51 AM

Quant Time: Sep 11 03:17:34 2020
 Quant Method : Z:\VOASRV\HPCHEM1\MSVOA_V\METHOD\SOMVLM090920WMA.M
 Quant Title : VOC Analysis
 QLast Update : Fri Sep 11 01:30:09 2020
 Response via : Initial Calibration

Internal Standards	R.T.	QIon	Response	Conc	Units	Dev(Min)
1) 1,4-Difluorobenzene	5.64	114	296545	50.00	ug/L	0.00
28) Chlorobenzene-d5	8.87	117	293014	50.00	ug/L	0.00
60) 1,4-Dichlorobenzene-d4	11.27	152	146778	50.00	ug/L	0.00

System Monitoring Compounds

4) Vinyl Chloride-d3	1.32	65	101256	41.90	ug/L	0.00
Spiked Amount	50.000	Range	60 - 135	Recovery	=	83.80%
7) Chloroethane-d5	1.58	69	89455	45.24	ug/L	0.00
Spiked Amount	50.000	Range	70 - 130	Recovery	=	90.48%
11) 1,1-Dichloroethene-d2	2.12	63	154119	34.77	ug/L	0.00
Spiked Amount	50.000	Range	60 - 125	Recovery	=	69.54%
21) 2-Butanone-d5	3.91	46	140870	95.23	ug/L	0.00
Spiked Amount	100.000	Range	40 - 130	Recovery	=	95.23%
24) Chloroform-d	4.38	84	186616	44.51	ug/L	0.00
Spiked Amount	50.000	Range	70 - 125	Recovery	=	89.02%
26) 1,2-Dichloroethane-d4	5.06	65	127180	47.32	ug/L	0.00
Spiked Amount	50.000	Range	70 - 125	Recovery	=	94.64%
32) Benzene-d6	5.08	84	389956	46.49	ug/L	0.00
Spiked Amount	50.000	Range	70 - 125	Recovery	=	92.98%
36) 1,2-Dichloropropane-d6	6.09	67	126579	47.49	ug/L	0.00
Spiked Amount	50.000	Range	70 - 120	Recovery	=	94.98%
41) Toluene-d8	7.34	98	346901	45.38	ug/L	0.00
Spiked Amount	50.000	Range	80 - 120	Recovery	=	90.76%
43) trans-1,3-Dichloropropene-	7.64	79	59253	43.75	ug/L	0.00
Spiked Amount	50.000	Range	60 - 125	Recovery	=	87.50%
47) 2-Hexanone-d5	8.11	63	90013	89.16	ug/L	0.00
Spiked Amount	100.000	Range	45 - 130	Recovery	=	89.16%
57) 1,1,2,2-Tetrachloroethane-	10.24	84	153068	45.76	ug/L	0.00
Spiked Amount	50.000	Range	65 - 120	Recovery	=	91.52%
64) 1,2-Dichlorobenzene-d4	11.65	152	149940	49.74	ug/L	0.00
Spiked Amount	50.000	Range	80 - 120	Recovery	=	99.48%

Target Compounds

Target Compounds	R.T.	QIon	Response	Conc	Units	Ovalue
2) Dichlorodifluoromethane	1.14	85	4885	2.259	ug/L	97
3) Chloromethane	1.25	50	5345	2.264	ug/L	100
5) Vinyl chloride	1.32	62	5947	2.456	ug/L #	71
6) Bromomethane	1.53	94	3590	2.426	ug/L	95
8) Chloroethane	1.60	64	3610	2.380	ug/L	98
9) Trichlorofluoromethane	1.77	101	7484	2.246	ug/L	98
10) 1,1,2-Trichloro-1,2,2-trif	2.13	101	6032	3.014	ug/L #	84
12) 1,1-Dichloroethene	2.13	96	5452	2.800	ug/L #	1
13) Acetone	2.20	43	6484	5.474	ug/L	94
14) Carbon disulfide	2.31	76	13369	2.244	ug/L	97
15) Methyl Acetate	2.46	43	4376	2.056	ug/L	97
16) Methylene chloride	2.53	84	5585	2.558	ug/L	98
17) trans-1,2-Dichloroethene	2.78	96	4459	2.222	ug/L	95
18) Methyl tert-butyl Ether	2.79	73	12675	2.042	ug/L	96
19) 1,1-Dichloroethane	3.22	63	8265	2.178	ug/L	93
20) cis-1,2-Dichloroethene	3.95	96	4873	2.272	ug/L	98
22) 2-Butanone	4.03	43	6558m	4.676	ug/L	

Data Path : Z:\VOASRV\HPCHEM1\MSVOA V\DATA\VV091020\
 Data File : VV018184.D
 Acq On : 10 Sep 2020 17:04
 Operator : SY/MD
 Sample : MDL02
 Misc : 5.0mL/MSVOA V/WATER
 ALS Vial : 18 Sample Multiplier: 1

Instrument :
 MSVOA_V
 Client Sampled :
 MDL02

Manual Integrations
 APPROVED

MMDadoda
 9/11/2020 10:28:51 AM

Quant Time: Sep 11 03:17:34 2020
 Quant Method : Z:\VOASRV\HPCHEM1\MSVOA_V\METHOD\SOMVLM090920WMA.M
 Quant Title : VOC Analysis
 QLast Update : Fri Sep 11 01:30:09 2020
 Response via : Initial Calibration

Internal Standards	R.T.	QIon	Response	Conc	Units	Dev(Min)
23) Bromochloromethane	4.29	128	2524	2.249	ug/L	90
25) Chloroform	4.41	83	15594	4.043	ug/L	99
27) 1,2-Dichloroethane	5.16	62	7435	2.490	ug/L	100
29) Cyclohexane	4.71	56	6924	2.046	ug/L #	88
30) 1,1,1-Trichloroethane	4.64	97	7534	2.216	ug/L	98
31) Carbon tetrachloride	4.86	117	6250	2.090	ug/L	95
33) Benzene	5.13	78	19608	2.341	ug/L	100
34) Trichloroethene	5.95	95	5346	2.343	ug/L	98
35) Methylcyclohexane	6.16	83	6693	1.948	ug/L #	81
37) 1,2-Dichloropropane	6.20	63	4526	2.039	ug/L #	90
38) Bromodichloromethane	6.54	83	6029	2.087	ug/L #	96
39) cis-1,3-Dichloropropene	7.06	75	7301	2.135	ug/L	93
40) 4-Methyl-2-pentanone	7.25	43	10400	3.862	ug/L	98
42) Toluene	7.41	91	19818	2.235	ug/L	99
44) trans-1,3-Dichloropropene	7.68	75	7344	2.205	ug/L	97
45) 1,1,2-Trichloroethane	7.87	97	4308	2.094	ug/L	98
46) Tetrachloroethene	8.00	164	4061	2.269	ug/L	94
48) 2-Hexanone	8.16	43	14935	7.034	ug/L	92
49) Dibromochloromethane	8.27	129	4713	2.041	ug/L	99
50) 1,2-Dibromoethane	8.38	107	4836	2.233	ug/L #	95
51) Chlorobenzene	8.90	112	13006	2.259	ug/L	96
52) Ethylbenzene	9.04	91	19950	2.061	ug/L	99
53) m,p-Xylene	9.16	106	7404	2.049	ug/L	93
54) o-xylene	9.57	106	6632	1.905	ug/L	97
55) Styrene	9.59	104	10790	1.784	ug/L	99
56) Isopropylbenzene	9.95	105	17896	1.908	ug/L	100
58) 1,1,2,2-Tetrachloroethane	10.26	83	7301	2.399	ug/L	97
59) 1,2,3-Trichloropropane	10.30	75	5856	2.243	ug/L	97
61) Bromoform	9.76	173	3113	1.974	ug/L #	97
62) 1,3-Dichlorobenzene	11.21	146	9948	2.279	ug/L	98
63) 1,4-Dichlorobenzene	11.30	146	11030	2.459	ug/L	95
65) 1,2-Dichlorobenzene	11.67	146	10949	2.482	ug/L	94
66) 1,2-Dibromo-3-chloropropan	12.45	75	1132	1.818	ug/L #	82
67) 1,3,5-Trichlorobenzene	12.67	180	7872	2.288	ug/L	99
68) 1,2,4-trichlorobenzene	13.29	180	6314	2.061	ug/L	99
69) Naphthalene	13.53	128	12916	1.666	ug/L	99
70) 1,2,3-Trichlorobenzene	13.77	180	6132	2.032	ug/L	97

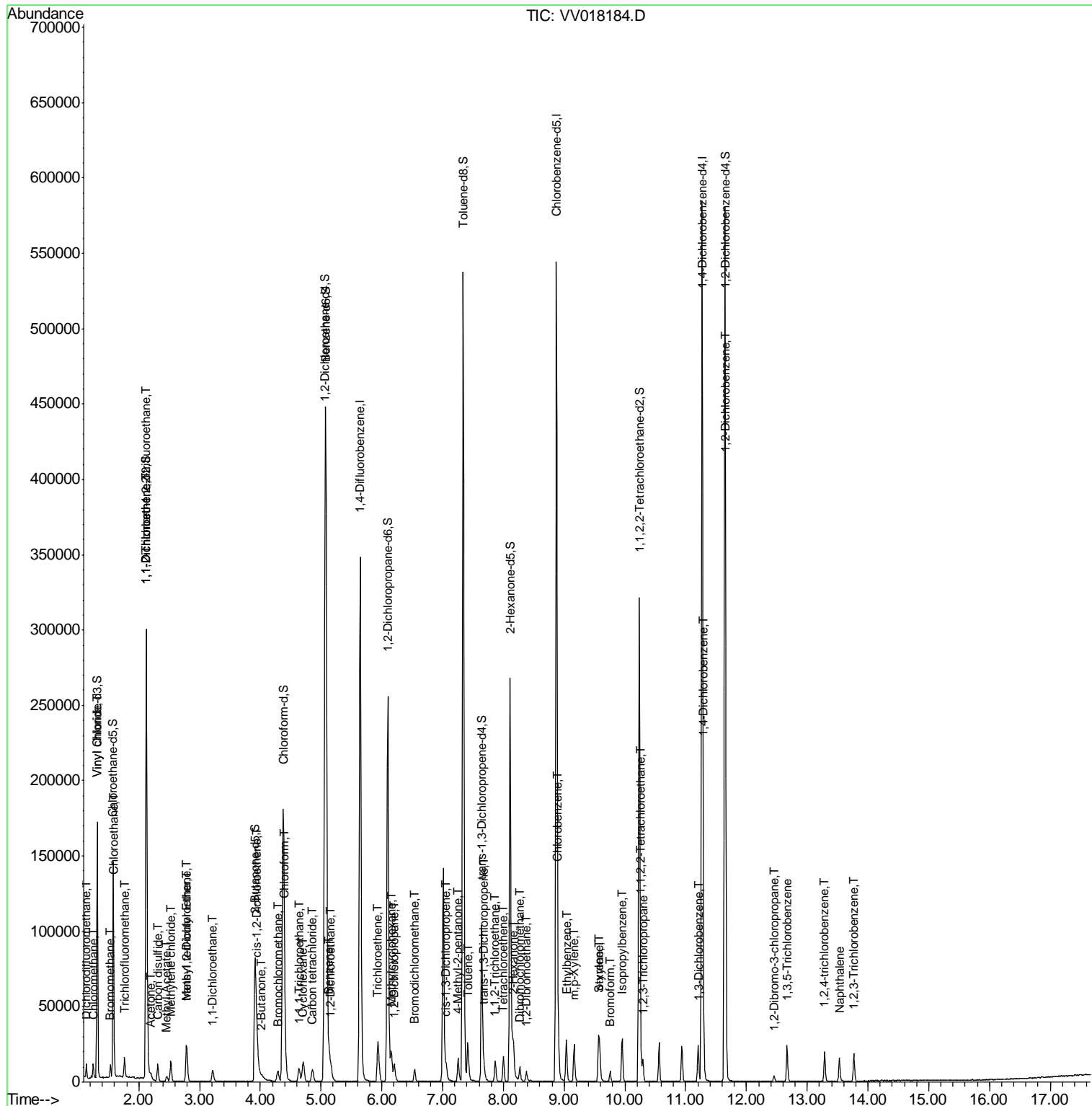
(#) = qualifier out of range (m) = manual integration (+) = signals summed

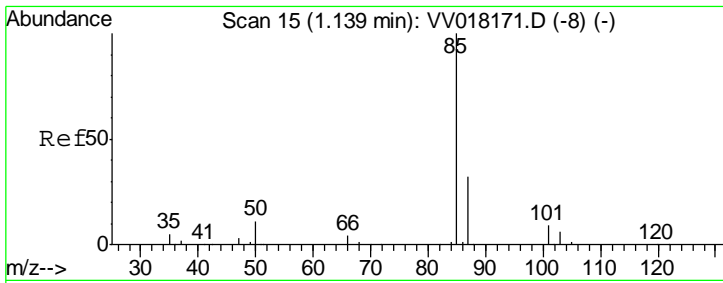
Data Path : Z:\VOASRV\HPCHEM1\MSVOA V\DATA\VV091020\
 Data File : VV018184.D
 Acq On : 10 Sep 2020 17:04
 Operator : SY/MD
 Sample : MDL02
 Misc : 5.0mL/MSVOA V/WATER
 ALS Vial : 18 Sample Multiplier: 1

Instrument :
 MSVOA_V
 Client Sampled :
 MDL02

Manual Integrations
APPROVED
 MMDadoda
 9/11/2020 10:28:51 AM

Quant Time: Sep 11 03:17:34 2020
 Quant Method : Z:\VOASRV\HPCHEM1\MSVOA_V\METHOD\SOMVLM090920WMA.M
 Quant Title : VOC Analysis
 QLast Update : Fri Sep 11 01:30:09 2020
 Response via : Initial Calibration



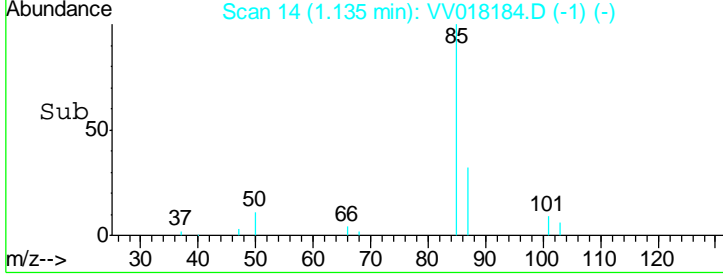
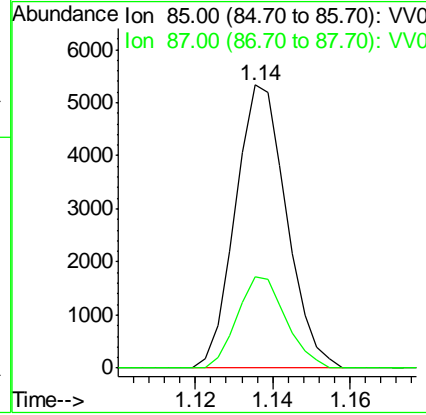
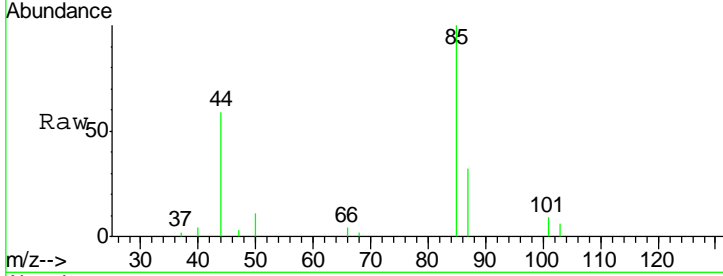


#2
 Dichlorodifluoromethane
 Concen: 2.259 ug/L
 RT: 1.14 min Scan# 14
 Delta R.T. -0.00 min
 Lab File: VV018184.D
 Acq: 10 Sep 2020 17:04

Instrument :
 MSVOA_V
ClientSampled :
 MDL02

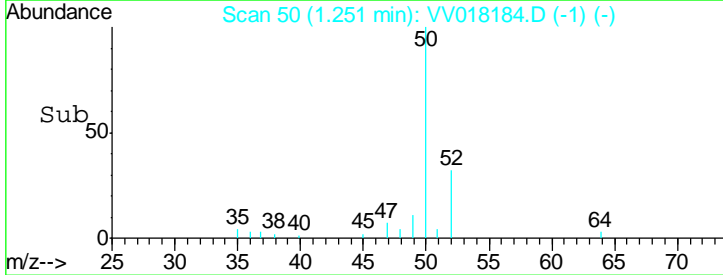
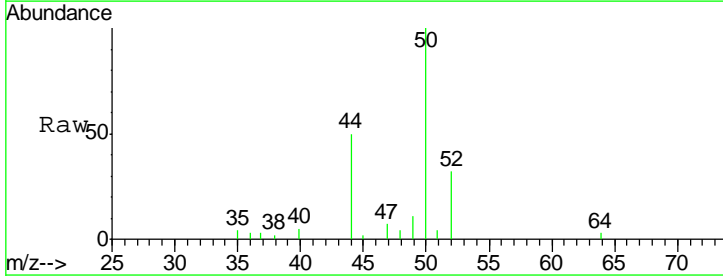
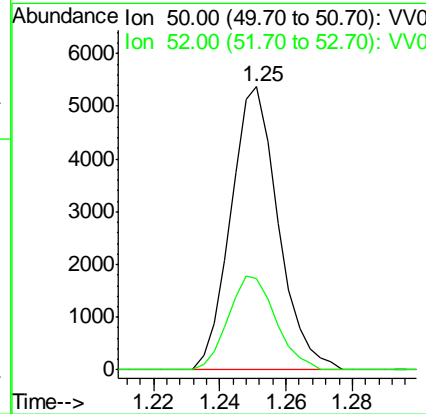
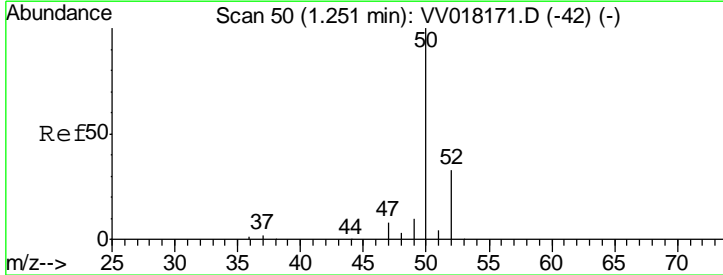
Tgt Ion	Resp	Lower	Upper
85	4885		
85	100		
87	30.6	25.7	38.5

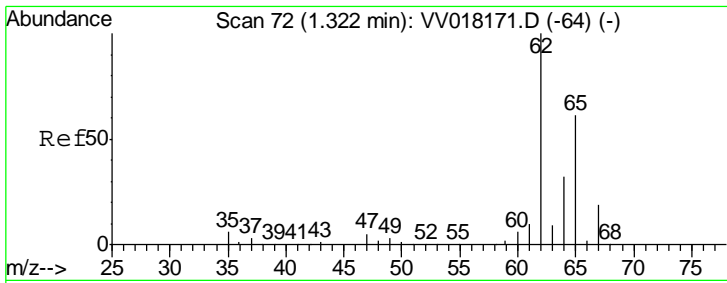
Manual Integrations
APPROVED
 MMDadoda
 9/11/2020 10:28:51 AM



#3
 Chloromethane
 Concen: 2.264 ug/L
 RT: 1.25 min Scan# 50
 Delta R.T. 0.00 min
 Lab File: VV018184.D
 Acq: 10 Sep 2020 17:04

Tgt Ion	Resp	Lower	Upper
50	5345		
50	100		
52	32.4	22.7	42.3





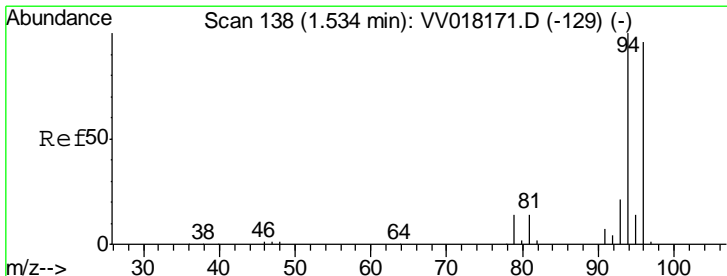
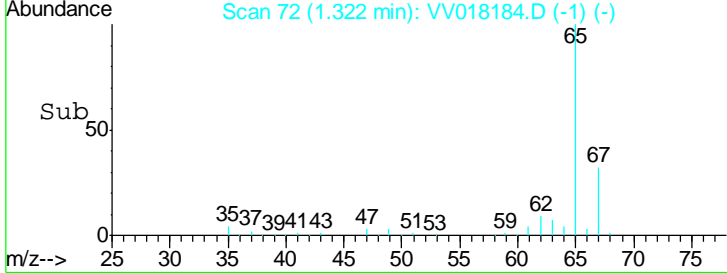
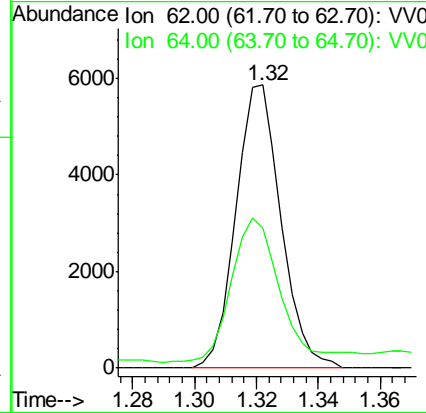
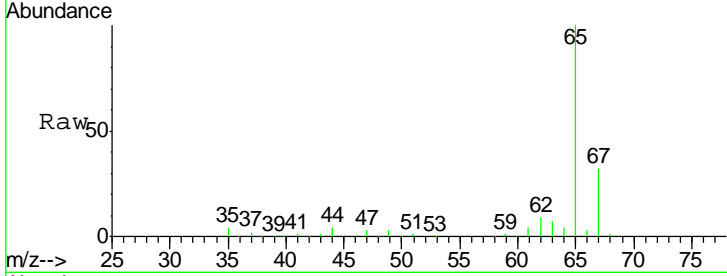
#5
 Vinyl chloride
 Concen: 2.456 ug/L
 RT: 1.32 min Scan# 72
 Delta R.T. 0.00 min
 Lab File: VV018184.D
 Acq: 10 Sep 2020 17:04

Instrument : MSVOA_V
 ClientSampled : MDL02

Tgt Ion	Resp	Lower	Upper
62	100		
64	49.4	23.1	42.9#

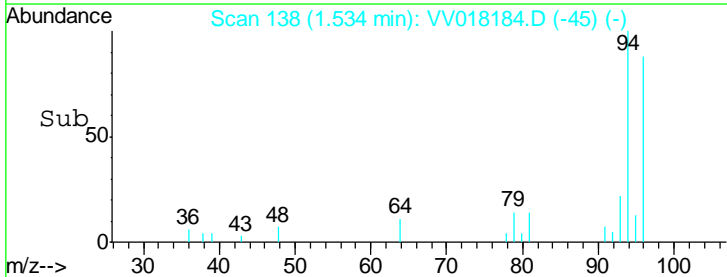
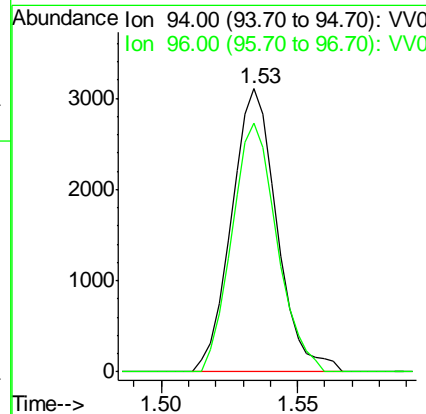
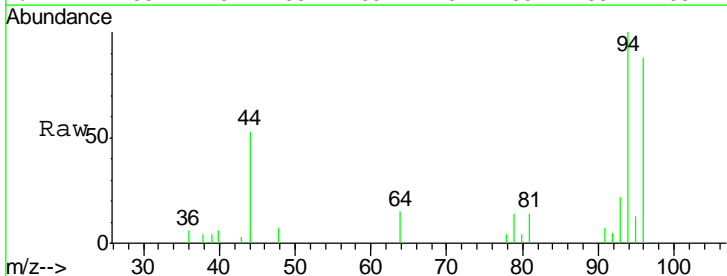
Manual Integrations
 APPROVED

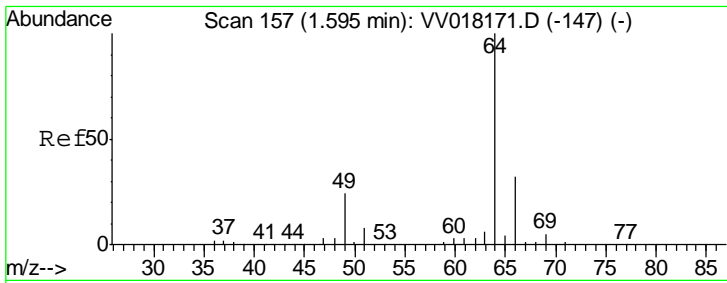
MMDadoda
 9/11/2020 10:28:51 AM



#6
 Bromomethane
 Concen: 2.426 ug/L
 RT: 1.53 min Scan# 138
 Delta R.T. 0.00 min
 Lab File: VV018184.D
 Acq: 10 Sep 2020 17:04

Tgt Ion	Resp	Lower	Upper
94	100		
96	88.1	65.1	120.9



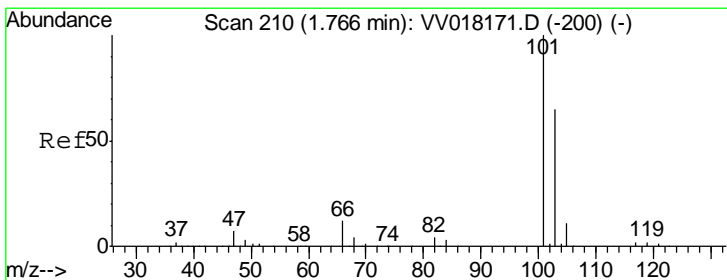
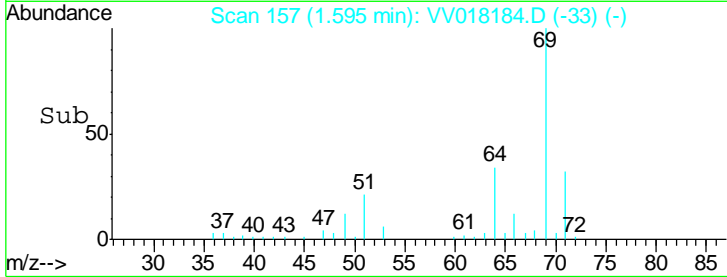
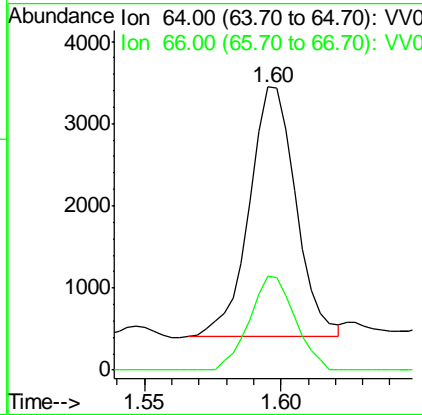
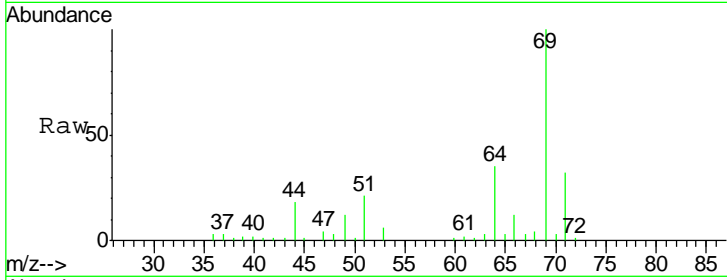


#8
 Chloroethane
 Concen: 2.380 ug/L
 RT: 1.60 min Scan# 157
 Delta R.T. 0.00 min
 Lab File: VV018184.D
 Acq: 10 Sep 2020 17:04

Instrument : MSVOA_V
 ClientSampled : MDL02

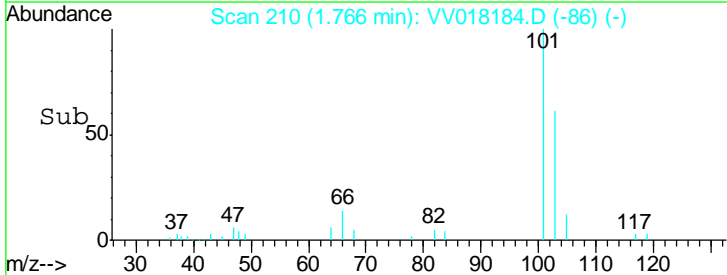
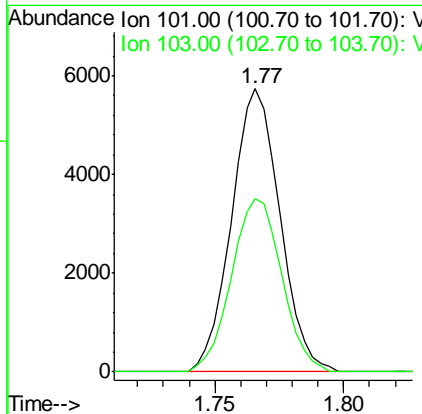
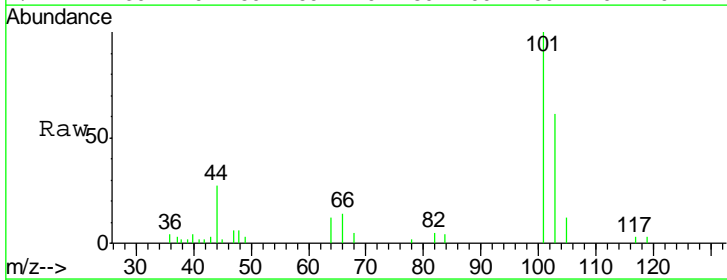
Tgt Ion	Ratio	Lower	Upper
64	100		
66	33.1	22.5	41.7

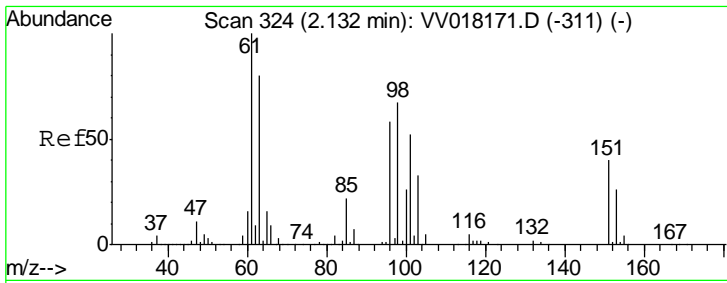
Manual Integrations
APPROVED
 MMDadoda
 9/11/2020 10:28:51 AM



#9
 Trichlorofluoromethane
 Concen: 2.246 ug/L
 RT: 1.77 min Scan# 210
 Delta R.T. 0.00 min
 Lab File: VV018184.D
 Acq: 10 Sep 2020 17:04

Tgt Ion	Ratio	Lower	Upper
101	100		
103	63.4	51.8	77.6





#10

1,1,2-Trichloro-1,2,2-trifluoroethane

Concen: 3.014 ug/L

RT: 2.13 min Scan# 324

Delta R.T. 0.00 min

Lab File: VV018184.D

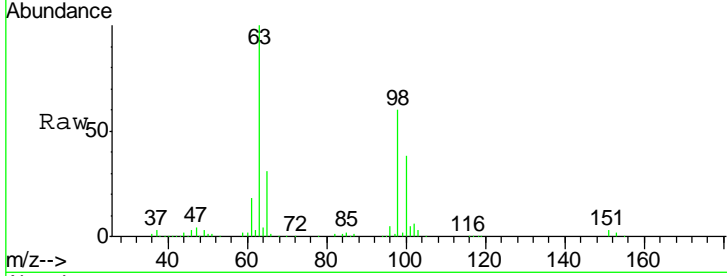
Acq: 10 Sep 2020 17:04

Instrument :

MSVOA_V

ClientSampled :

MDL02



Tgt Ion: 101 Resp: 6032

Ion Ratio Lower Upper

101 100

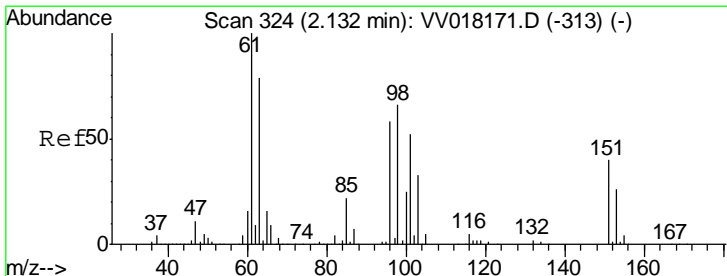
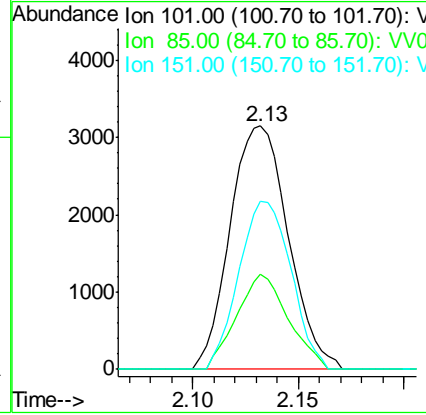
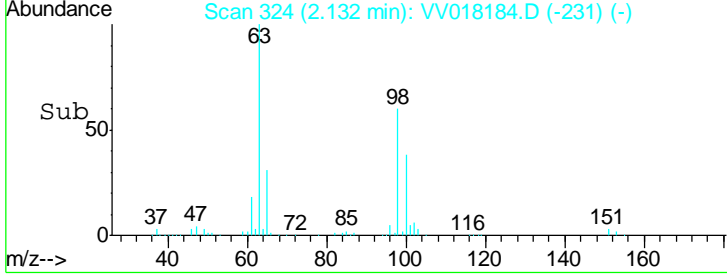
85 34.7 33.5 50.3

151 61.9 62.2 93.2#

Manual Integrations
APPROVED

MMDadoda

9/11/2020 10:28:51 AM



#12

1,1-Dichloroethene

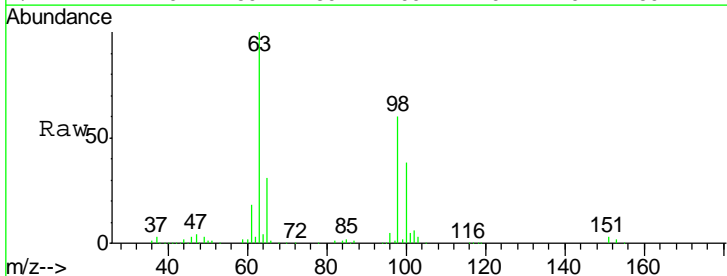
Concen: 2.800 ug/L

RT: 2.13 min Scan# 324

Delta R.T. 0.00 min

Lab File: VV018184.D

Acq: 10 Sep 2020 17:04



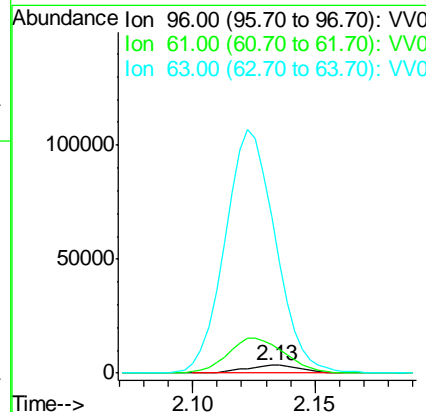
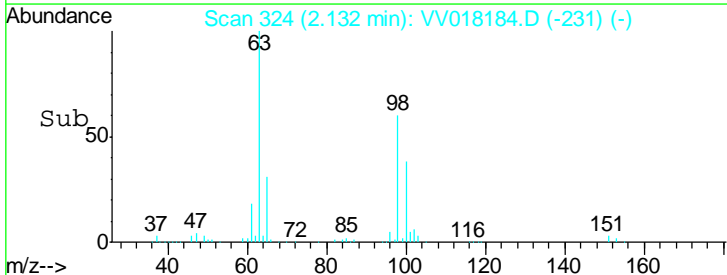
Tgt Ion: 96 Resp: 5452

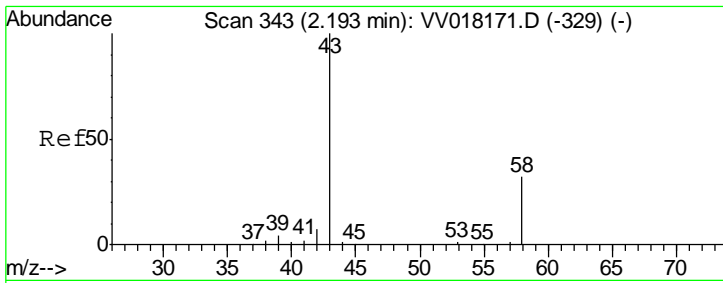
Ion Ratio Lower Upper

96 100

61 369.9 122.9 228.3#

63 2039.2 91.9 170.7#



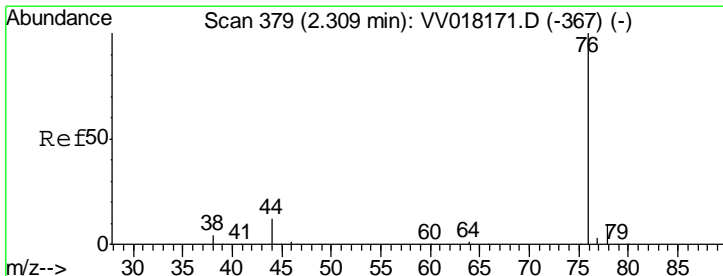
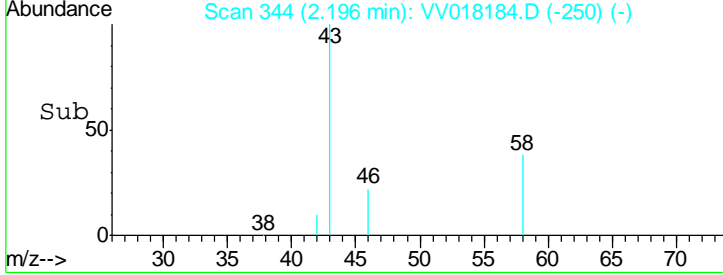
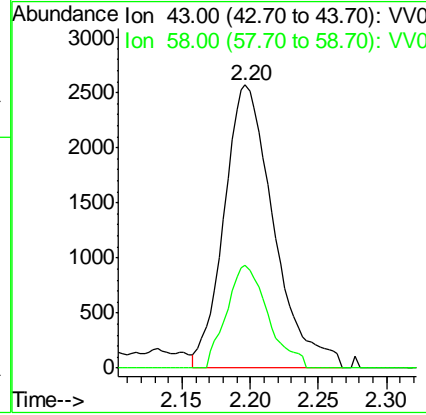
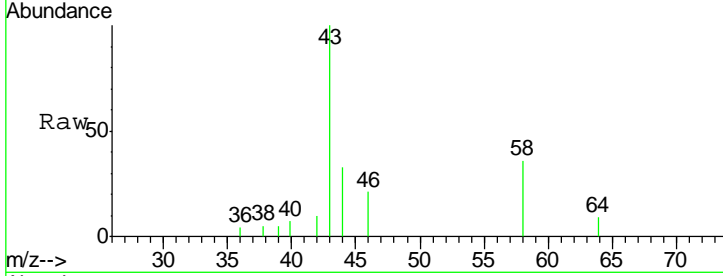


#13
 Acetone
 Concen: 5.474 ug/L
 RT: 2.20 min Scan# 344
 Delta R.T. 0.00 min
 Lab File: VV018184.D
 Acq: 10 Sep 2020 17:04

Instrument :
 MSVOA_V
ClientSampled :
 MDL02

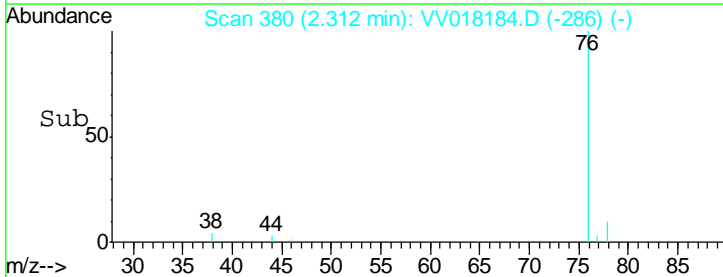
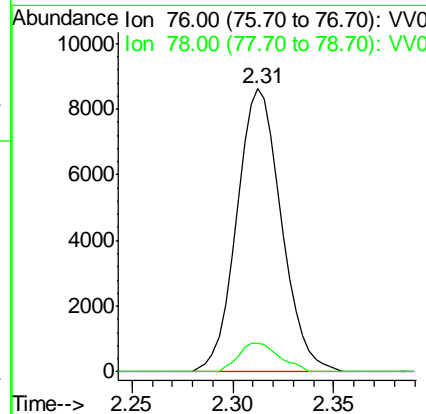
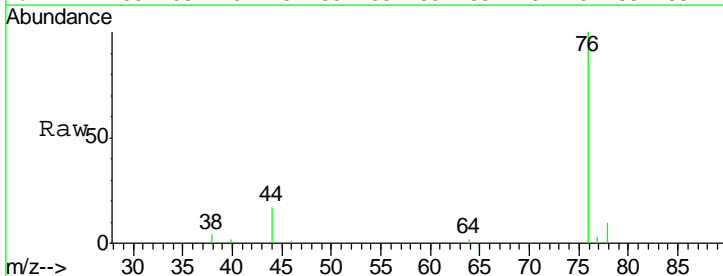
Tgt Ion	Ratio	Lower	Upper
43	100		
58	30.4	0.0	67.4

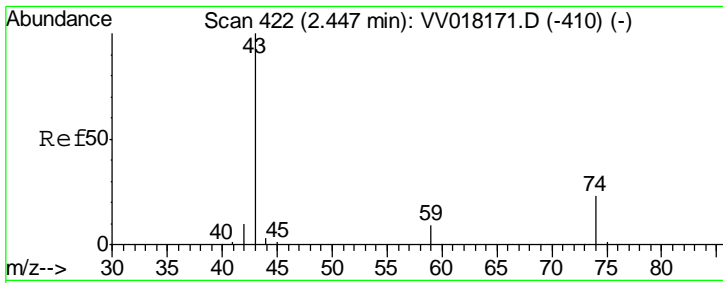
Manual Integrations
APPROVED
 MMDadoda
 9/11/2020 10:28:51 AM



#14
 Carbon disulfide
 Concen: 2.244 ug/L
 RT: 2.31 min Scan# 380
 Delta R.T. 0.00 min
 Lab File: VV018184.D
 Acq: 10 Sep 2020 17:04

Tgt Ion	Ratio	Lower	Upper
76	100		
78	10.2	7.3	10.9



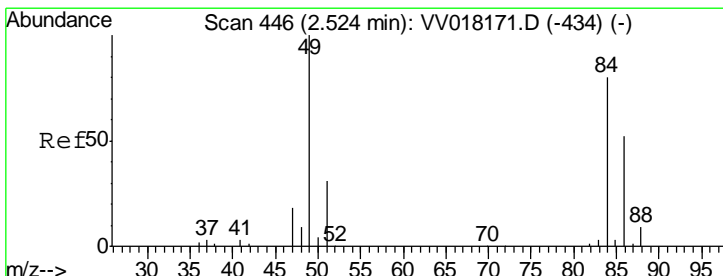
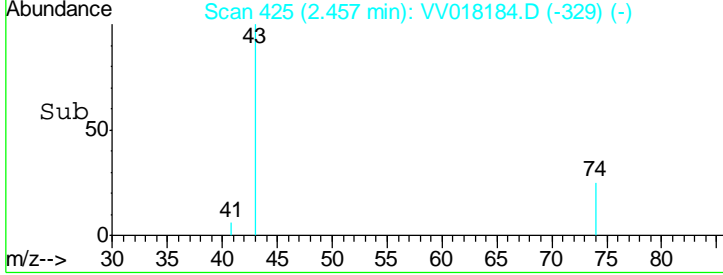
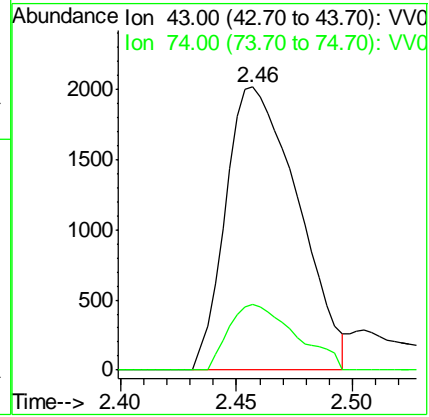
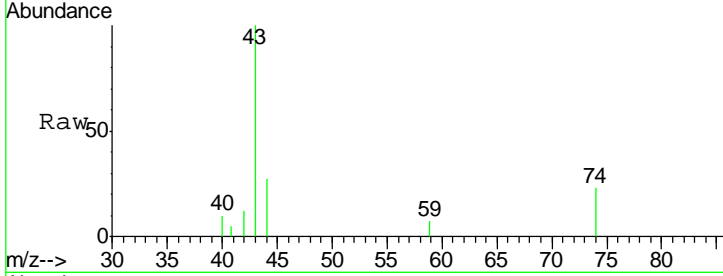


#15
 Methyl Acetate
 Concen: 2.056 ug/L
 RT: 2.46 min Scan# 425
 Delta R.T. 0.01 min
 Lab File: VV018184.D
 Acq: 10 Sep 2020 17:04

Instrument : MSVOA_V
 ClientSampled : MDL02

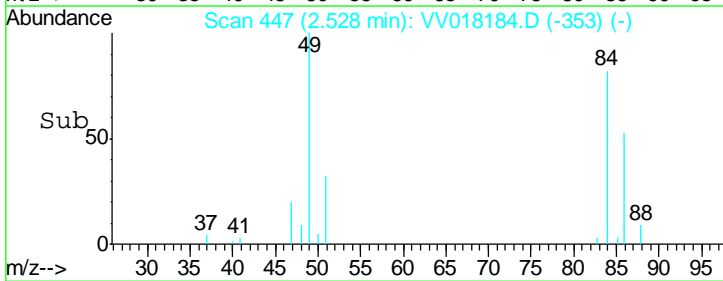
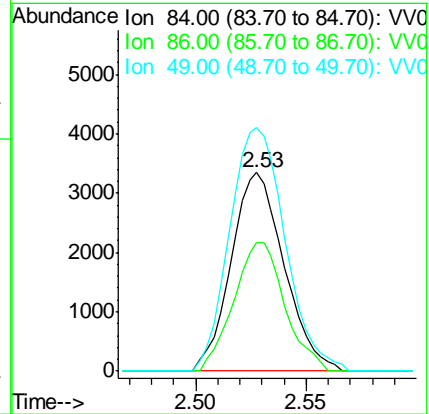
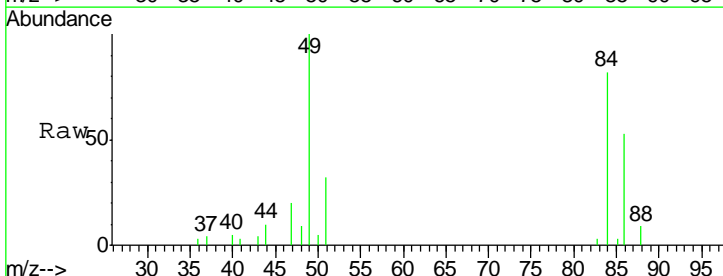
Tgt Ion	Resp	Lower	Upper
43	100		
74	21.4	18.4	27.6

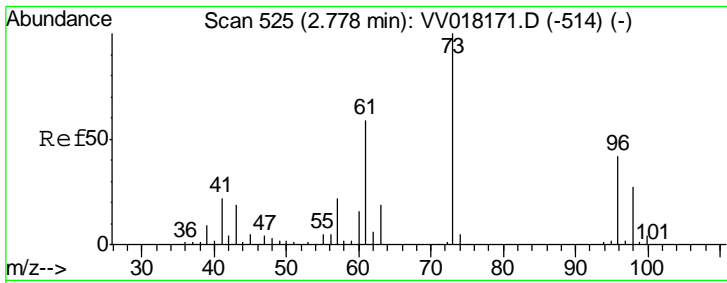
Manual Integrations APPROVED
 MMDadoda
 9/11/2020 10:28:51 AM



#16
 Methylene chloride
 Concen: 2.558 ug/L
 RT: 2.53 min Scan# 447
 Delta R.T. 0.00 min
 Lab File: VV018184.D
 Acq: 10 Sep 2020 17:04

Tgt Ion	Resp	Lower	Upper
84	100		
86	64.9	44.4	82.4
49	122.6	87.2	162.0





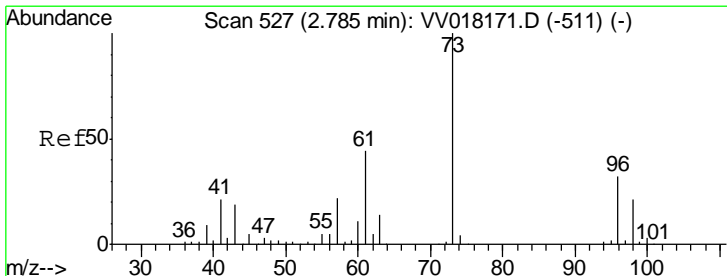
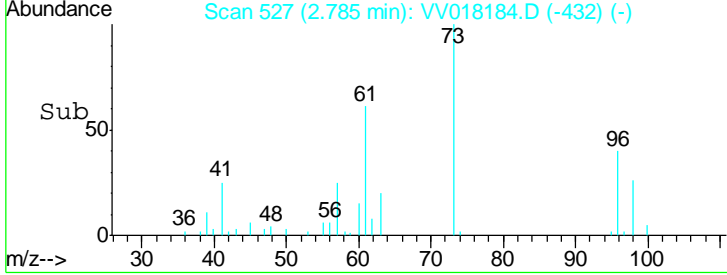
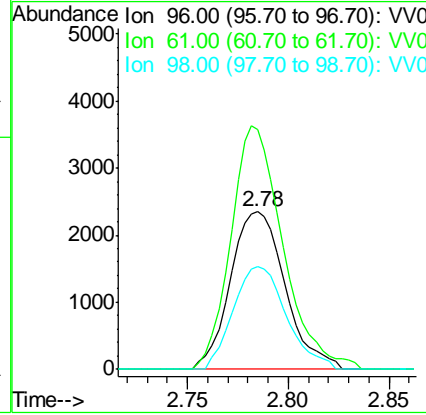
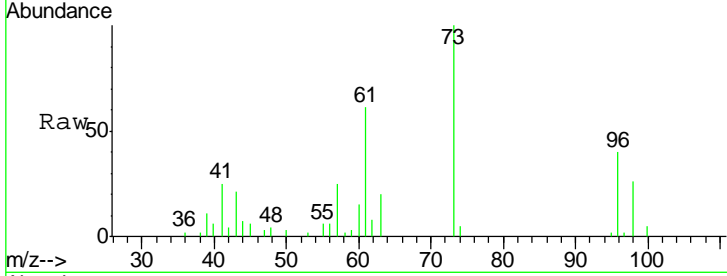
#17
 trans-1,2-Dichloroethene
 Concen: 2.222 ug/L
 RT: 2.78 min Scan# 527
 Delta R.T. 0.01 min
 Lab File: VV018184.D
 Acq: 10 Sep 2020 17:04

Instrument : MSVOA_V
 ClientSampled : MDL02

Tgt Ion	Resp	Lower	Upper
96	4459		
96	100		
61	152.0	100.7	186.9
98	64.8	45.2	84.0

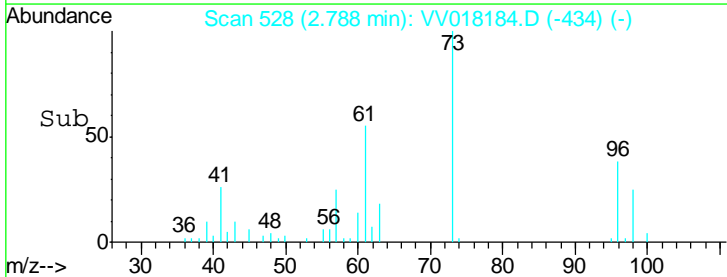
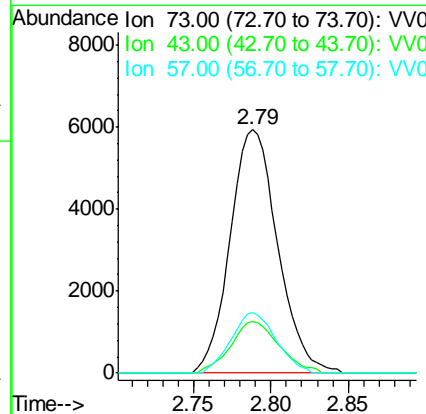
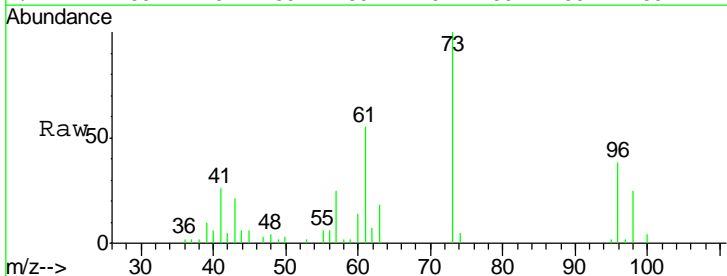
Manual Integrations
 APPROVED

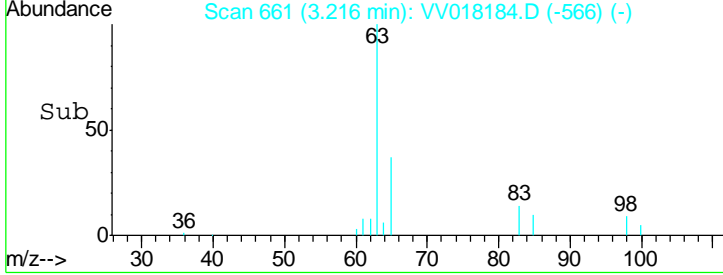
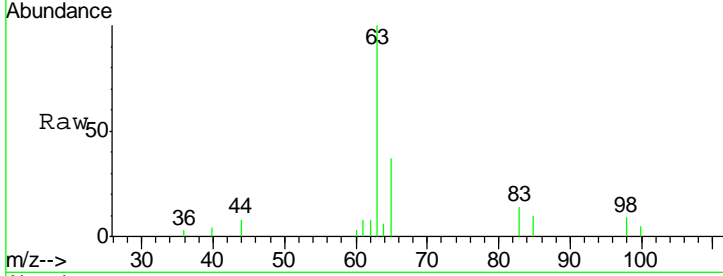
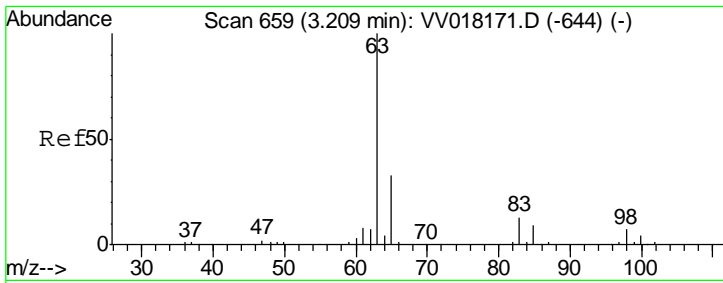
MMDadoda
 9/11/2020 10:28:51 AM



#18
 Methyl tert-butyl Ether
 Concen: 2.042 ug/L
 RT: 2.79 min Scan# 528
 Delta R.T. 0.00 min
 Lab File: VV018184.D
 Acq: 10 Sep 2020 17:04

Tgt Ion	Resp	Lower	Upper
73	12675		
73	100		
43	21.6	15.4	23.0
57	23.6	18.0	27.0



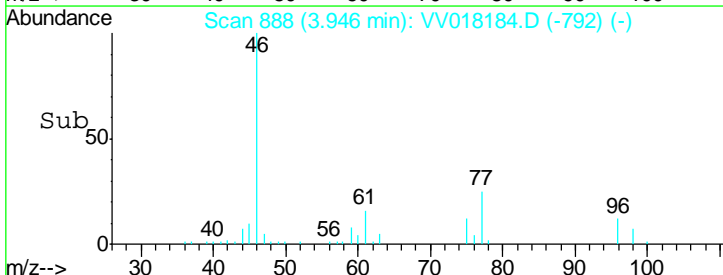
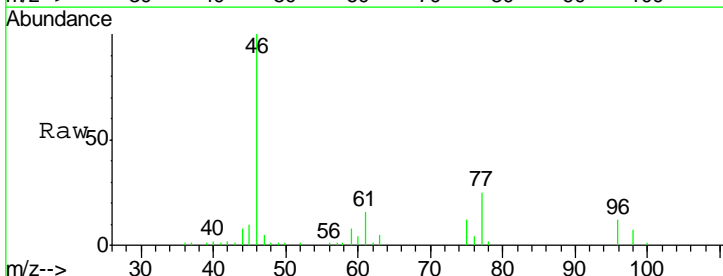
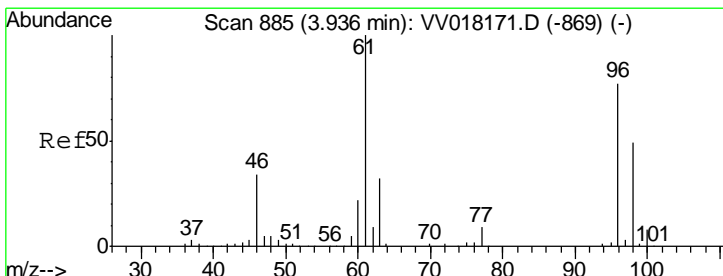
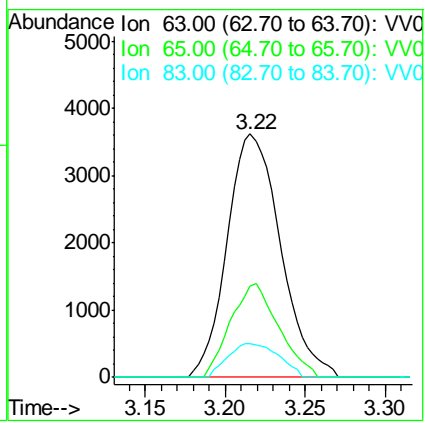


#19
 1,1-Dichloroethane
 Concen: 2.178 ug/L
 RT: 3.22 min Scan# 661
 Delta R.T. 0.01 min
 Lab File: VV018184.D
 Acq: 10 Sep 2020 17:04

Tgt Ion	Resp	Lower	Upper
63	100		
65	37.3	22.5	41.7
83	14.0	9.3	17.3

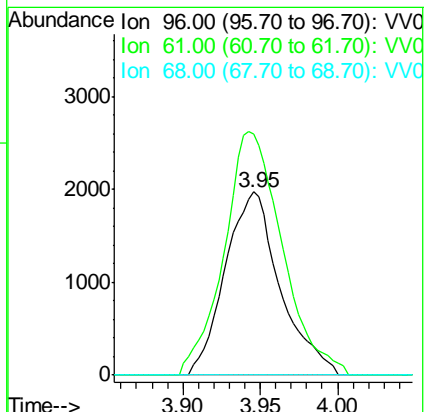
Instrument : MSVOA_V
 ClientSampled : MDL02

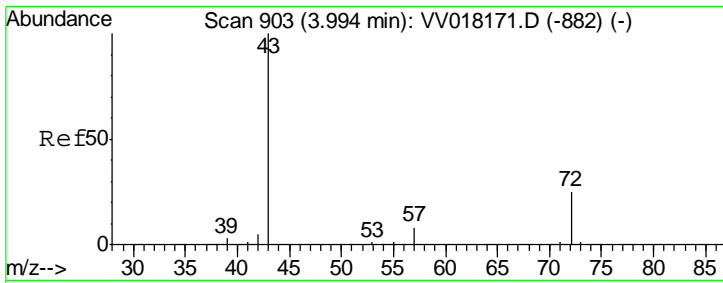
Manual Integrations APPROVED
 MMDadoda
 9/11/2020 10:28:51 AM



#20
 cis-1,2-Dichloroethene
 Concen: 2.272 ug/L
 RT: 3.95 min Scan# 888
 Delta R.T. 0.01 min
 Lab File: VV018184.D
 Acq: 10 Sep 2020 17:04

Tgt Ion	Resp	Lower	Upper
96	100		
61	131.2	93.6	173.8
68	0.0	0.0	0.0



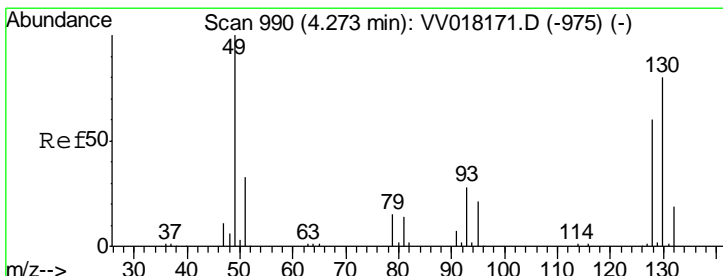
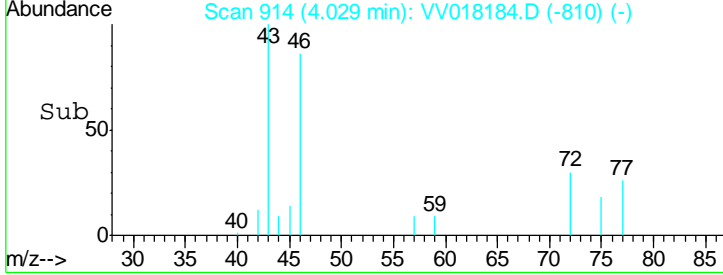
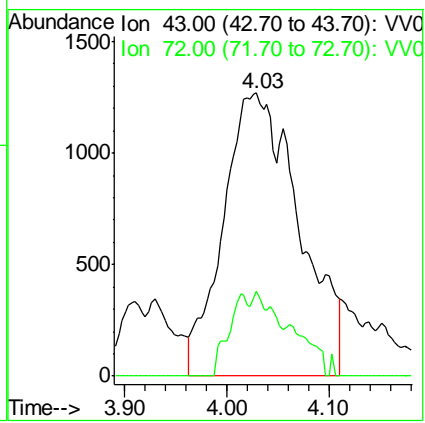
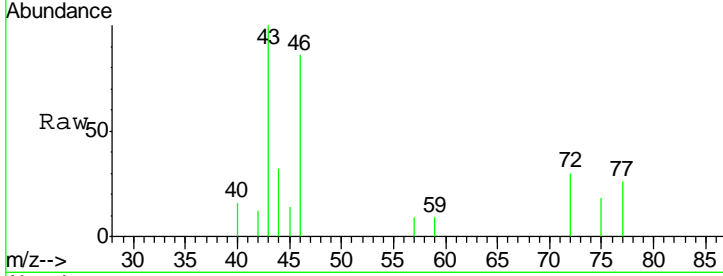


#22
 2-Butanone
 Concen: 4.676 ug/L m
 RT: 4.03 min Scan# 914
 Delta R.T. 0.04 min
 Lab File: VV018184.D
 Acq: 10 Sep 2020 17:04

Instrument :
 MSVOA_V
ClientSampled :
 MDL02

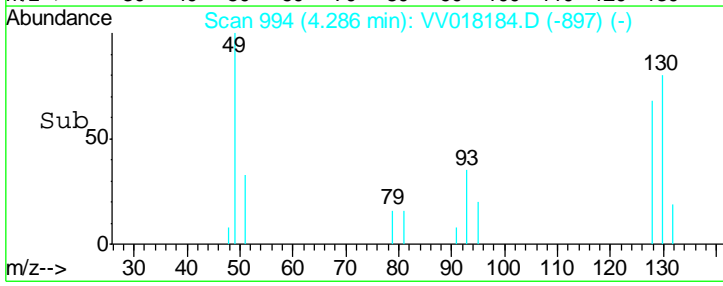
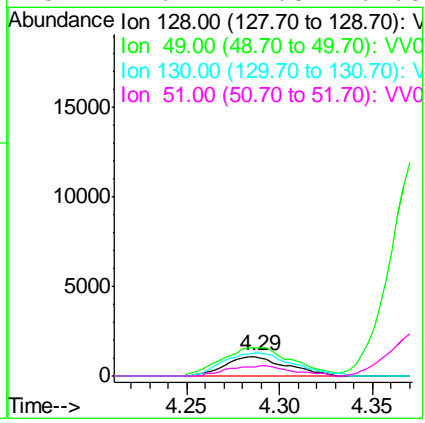
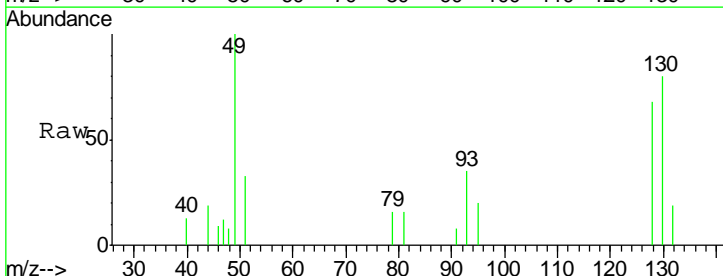
Tgt Ion: 43 Resp: 6558
 Ion Ratio Lower Upper
 43 100
 72 4.3 13.1 39.3#

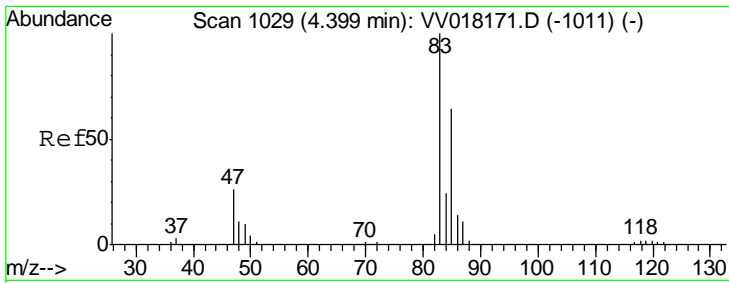
Manual Integrations
APPROVED
 MMDadoda
 9/11/2020 10:28:51 AM



#23
 Bromochloromethane
 Concen: 2.249 ug/L
 RT: 4.29 min Scan# 994
 Delta R.T. 0.01 min
 Lab File: VV018184.D
 Acq: 10 Sep 2020 17:04

Tgt Ion: 128 Resp: 2524
 Ion Ratio Lower Upper
 128 100
 49 146.2 114.4 212.6
 130 117.2 87.9 163.3
 51 47.7 41.8 62.8



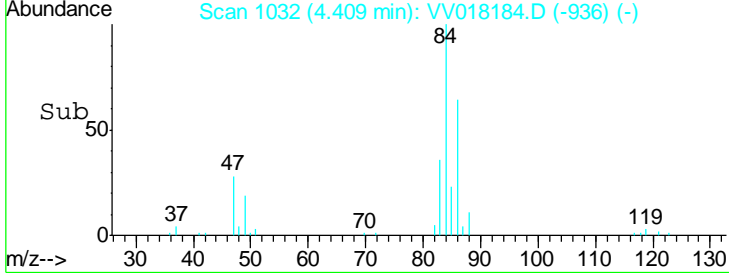
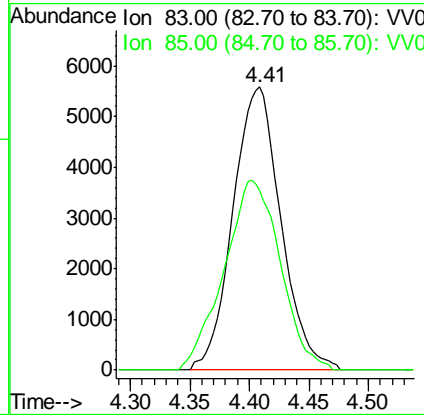
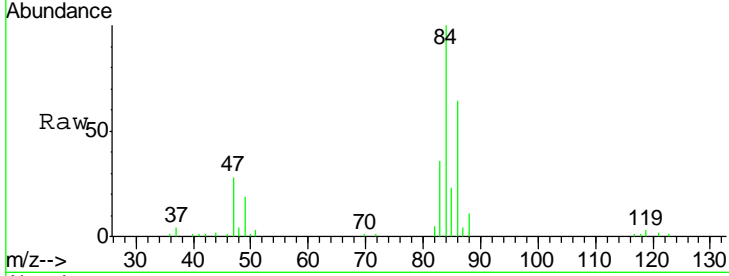


#25
 Chloroform
 Concen: 4.043 ug/L
 RT: 4.41 min Scan# 1032
 Delta R.T. 0.01 min
 Lab File: VV018184.D
 Acq: 10 Sep 2020 17:04

Instrument :
 MSVOA_V
ClientSampled :
 MDL02

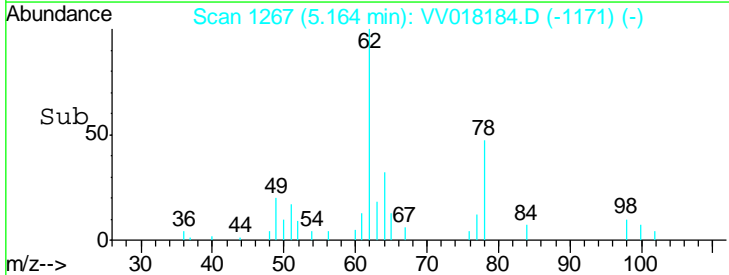
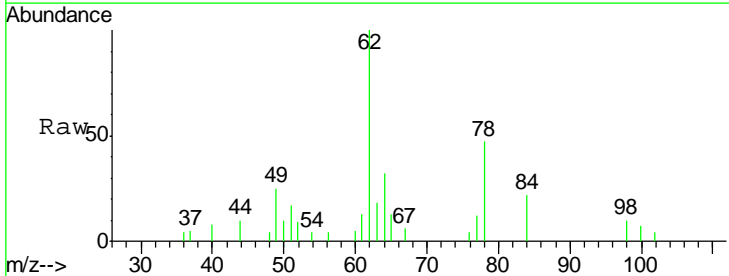
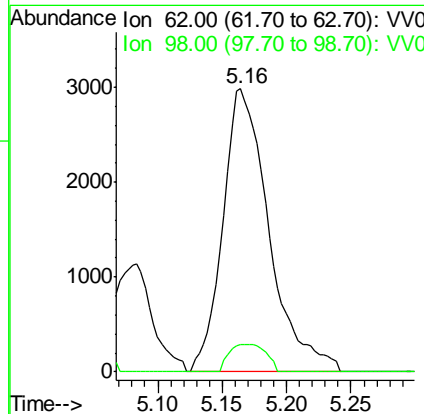
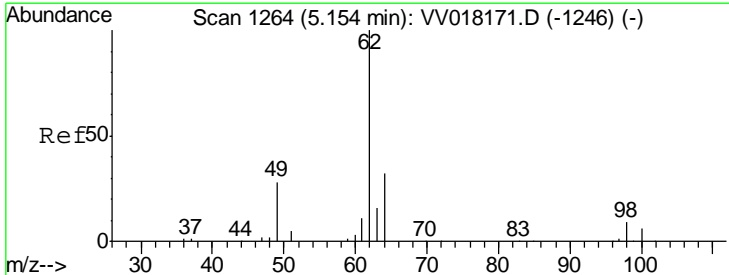
Tgt Ion	Resp	Lower	Upper
83	1594		
83	100		
85	63.4	45.0	83.6

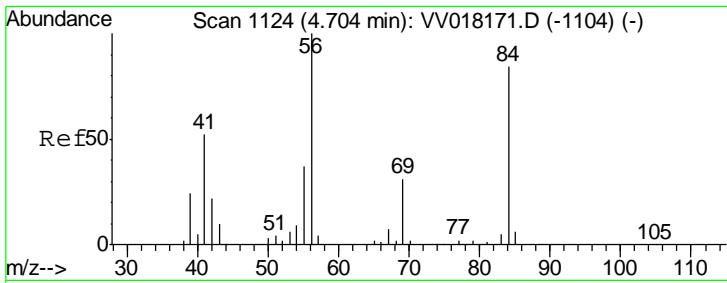
Manual Integrations
APPROVED
 MMDadoda
 9/11/2020 10:28:51 AM



#27
 1,2-Dichloroethane
 Concen: 2.490 ug/L
 RT: 5.16 min Scan# 1267
 Delta R.T. 0.01 min
 Lab File: VV018184.D
 Acq: 10 Sep 2020 17:04

Tgt Ion	Resp	Lower	Upper
62	7435		
62	100		
98	9.6	7.6	11.4





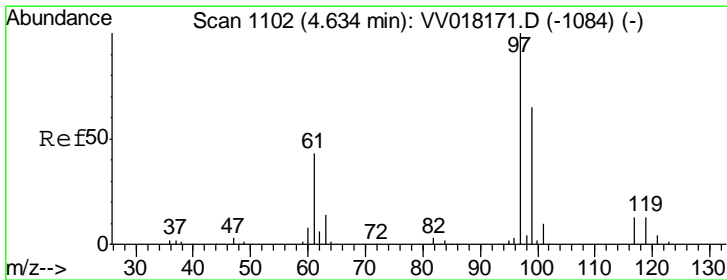
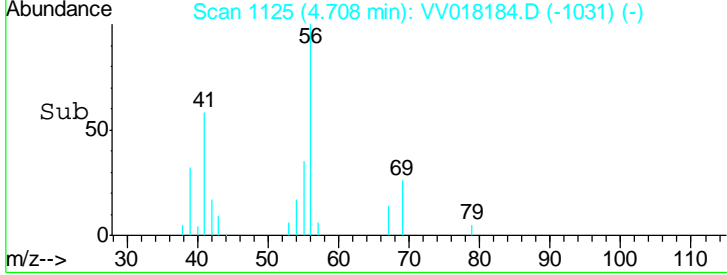
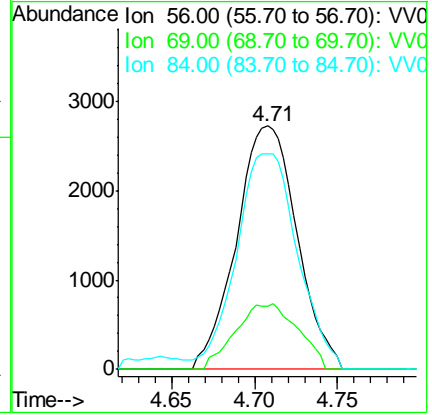
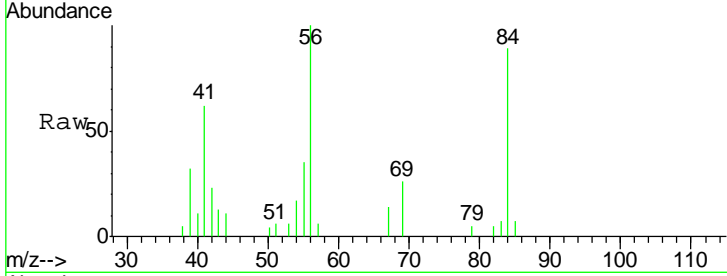
#29
 Cyclohexane
 Concen: 2.046 ug/L
 RT: 4.71 min Scan# 1125
 Delta R.T. 0.00 min
 Lab File: VV018184.D
 Acq: 10 Sep 2020 17:04

Instrument : MSVOA_V
 ClientSampled : MDL02

Tgt Ion	Resp	Lower	Upper
56	100		
69	13.0	24.2	36.2#
84	89.8	68.3	102.5

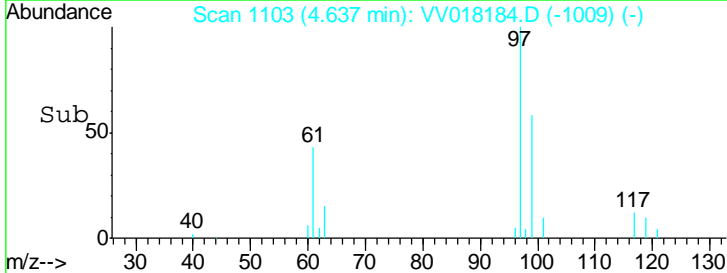
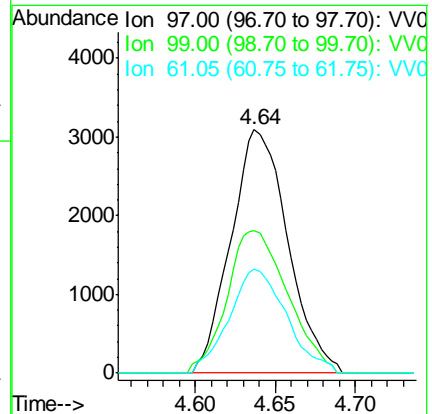
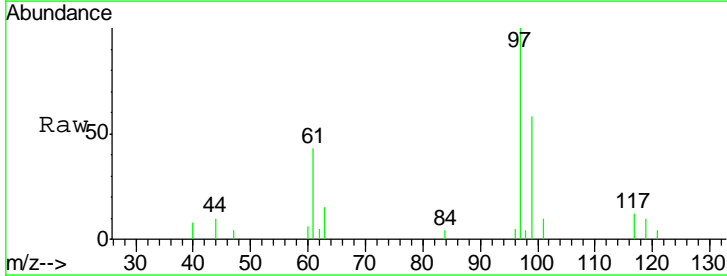
Manual Integrations
 APPROVED

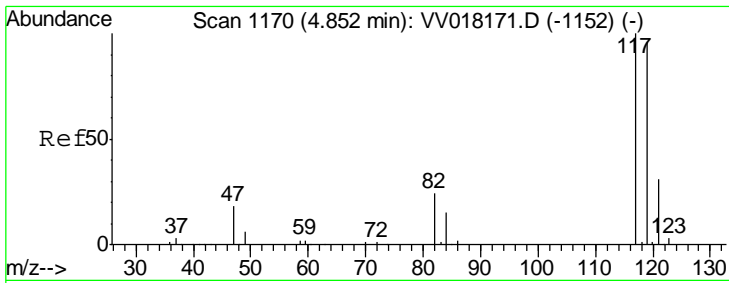
MMDadoda
 9/11/2020 10:28:51 AM



#30
 1,1,1-Trichloroethane
 Concen: 2.216 ug/L
 RT: 4.64 min Scan# 1103
 Delta R.T. 0.00 min
 Lab File: VV018184.D
 Acq: 10 Sep 2020 17:04

Tgt Ion	Resp	Lower	Upper
97	100		
99	62.4	51.6	77.4
61	43.1	34.9	52.3





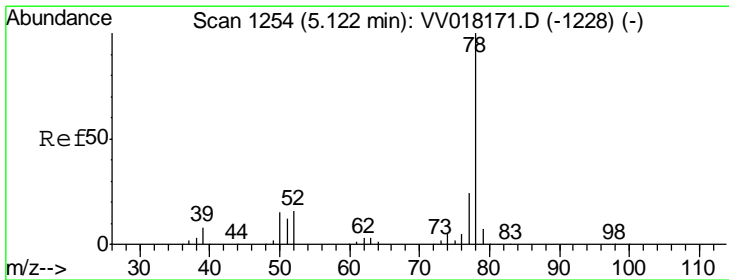
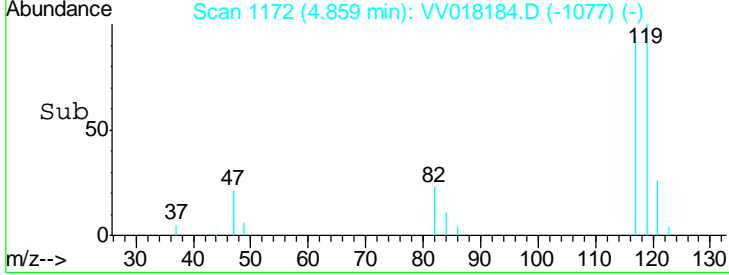
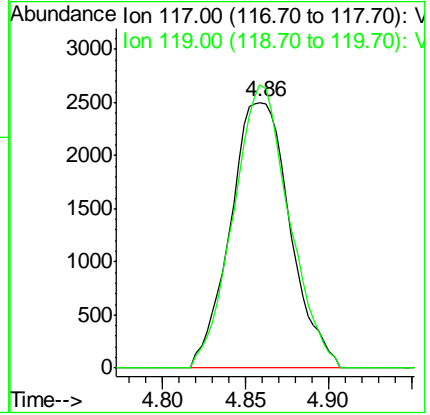
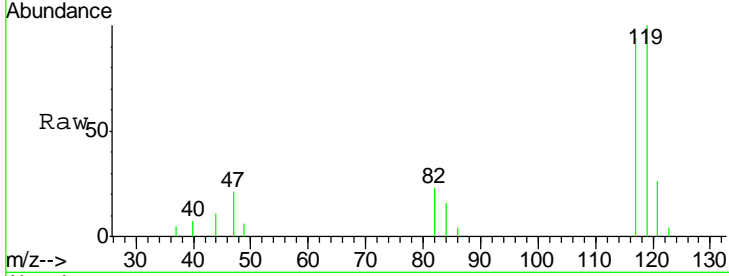
#31
 Carbon tetrachloride
 Concen: 2.090 ug/L
 RT: 4.86 min Scan# 1172
 Delta R.T. 0.01 min
 Lab File: VV018184.D
 Acq: 10 Sep 2020 17:04

Instrument :
 MSVOA_V
ClientSampled :
 MDL02

Tgt Ion: 117 Resp: 6250
 Ion Ratio Lower Upper
 117 100
 119 99.8 75.7 113.5

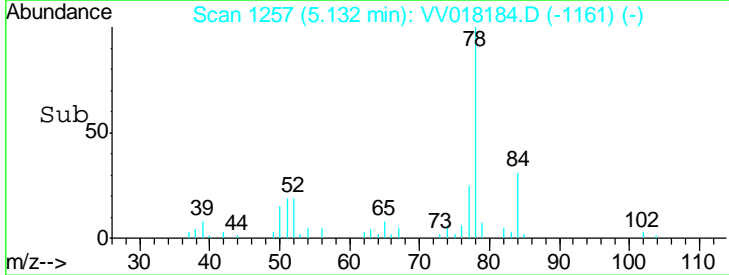
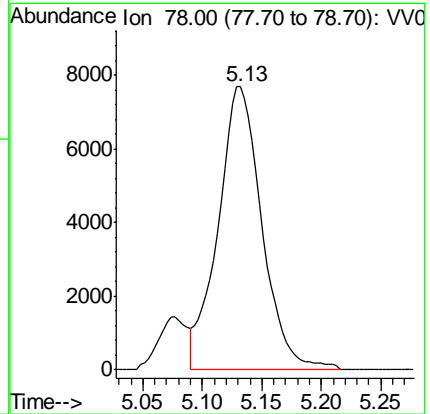
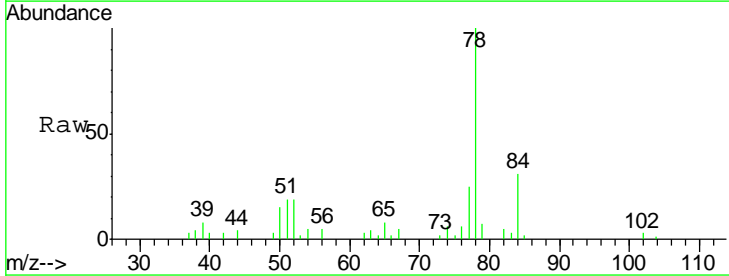
Manual Integrations
APPROVED

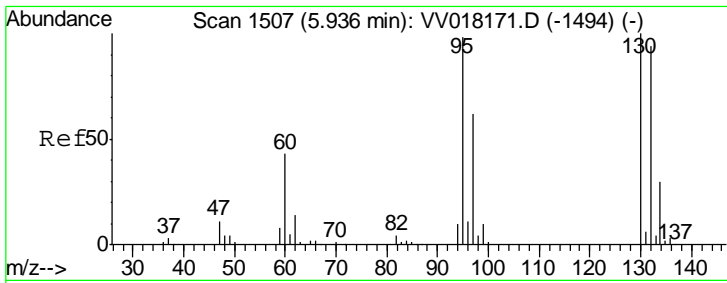
MMDadoda
 9/11/2020 10:28:51 AM



#33
 Benzene
 Concen: 2.341 ug/L
 RT: 5.13 min Scan# 1257
 Delta R.T. 0.01 min
 Lab File: VV018184.D
 Acq: 10 Sep 2020 17:04

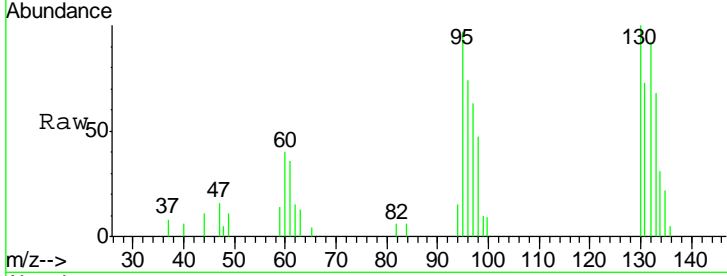
Tgt Ion: 78 Resp: 19608





#34
 Trichloroethene
 Concen: 2.343 ug/L
 RT: 5.95 min Scan# 1510
 Delta R.T. 0.01 min
 Lab File: VV018184.D
 Acq: 10 Sep 2020 17:04

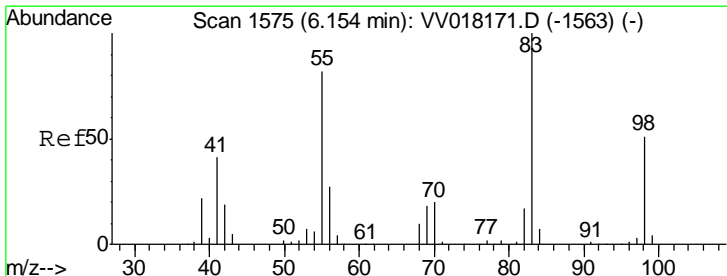
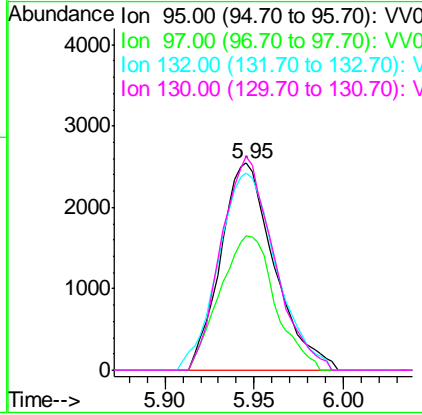
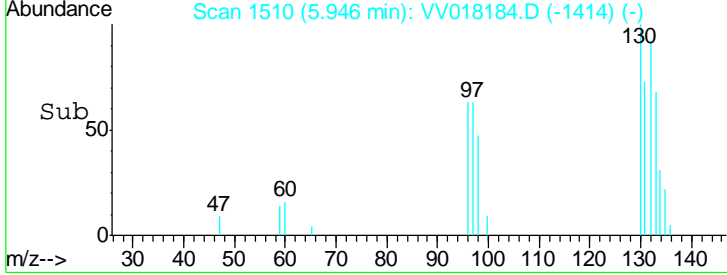
Instrument : MSVOA_V
 ClientSampled : MDL02



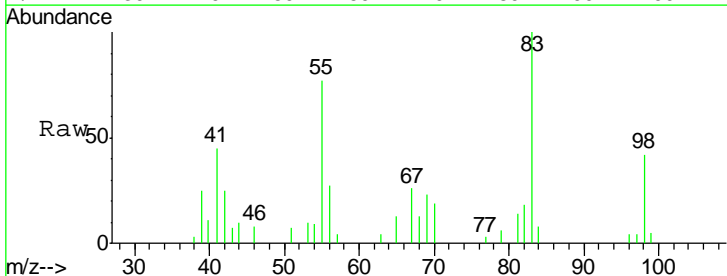
Tgt Ion: 95 Resp: 5346

Ion	Ratio	Lower	Upper
95	100		
97	64.7	46.3	85.9
132	95.3	68.1	126.5
130	103.2	71.5	132.9

Manual Integrations
APPROVED
 MMDadoda
 9/11/2020 10:28:51 AM

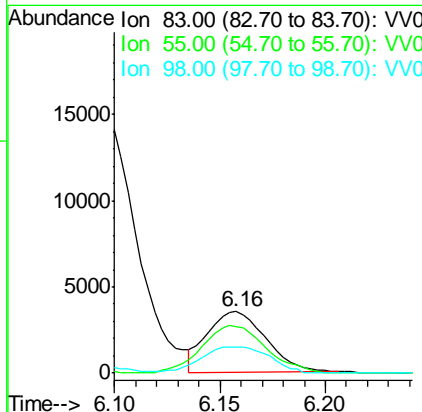
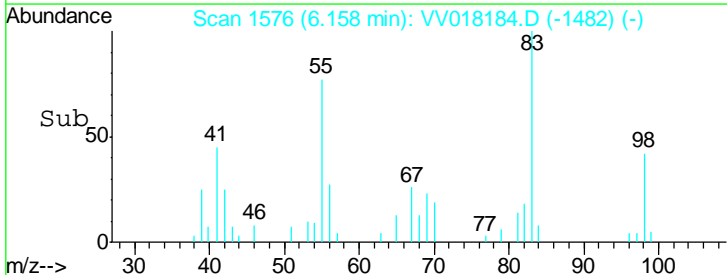


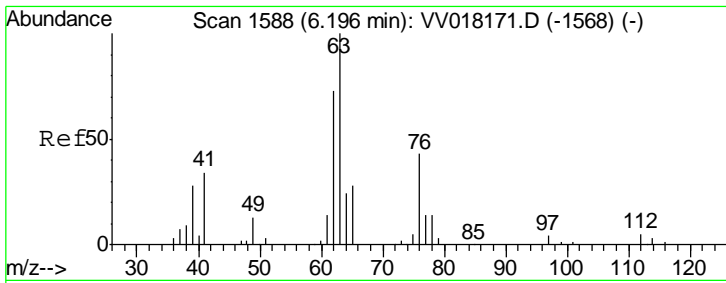
#35
 Methylcyclohexane
 Concen: 1.948 ug/L
 RT: 6.16 min Scan# 1576
 Delta R.T. 0.00 min
 Lab File: VV018184.D
 Acq: 10 Sep 2020 17:04



Tgt Ion: 83 Resp: 6693

Ion	Ratio	Lower	Upper
83	100		
55	86.7	63.4	95.2
98	24.5	38.8	58.2#





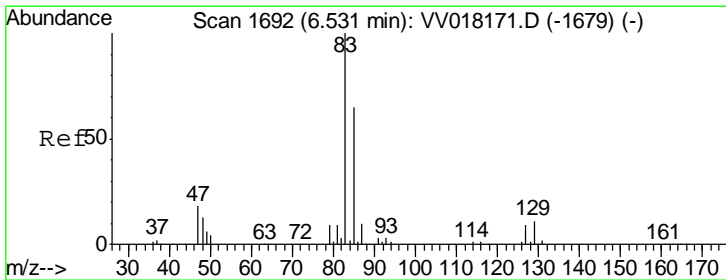
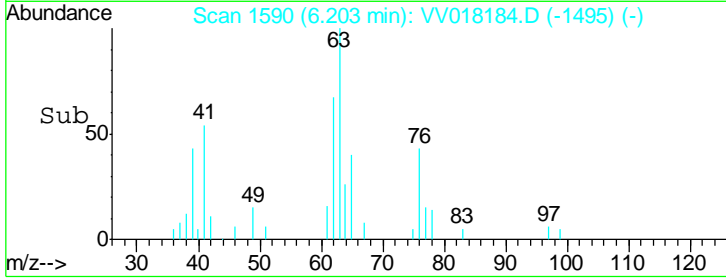
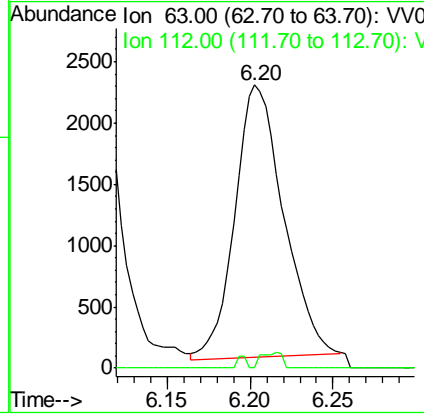
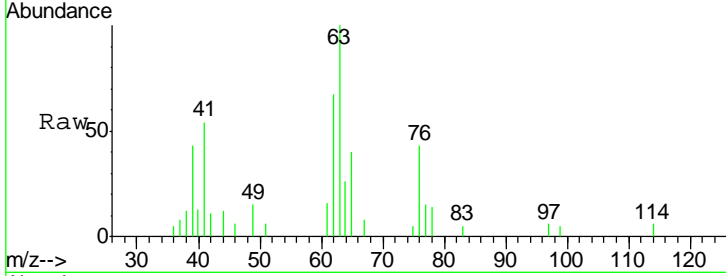
#37
 1,2-Dichloropropane
 Concen: 2.039 ug/L
 RT: 6.20 min Scan# 1590
 Delta R.T. 0.01 min
 Lab File: VV018184.D
 Acq: 10 Sep 2020 17:04

Instrument : MSVOA_V
 ClientSampled : MDL02

Tgt Ion	Resp	Lower	Upper
63	100		
112	0.9	3.4	5.2#

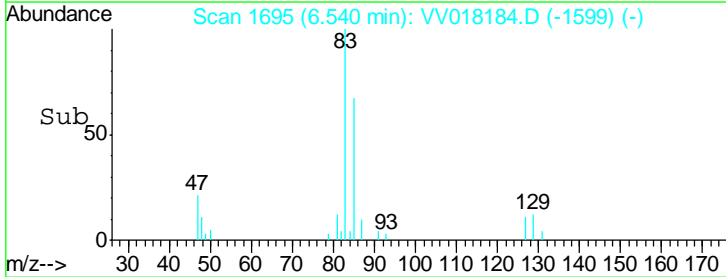
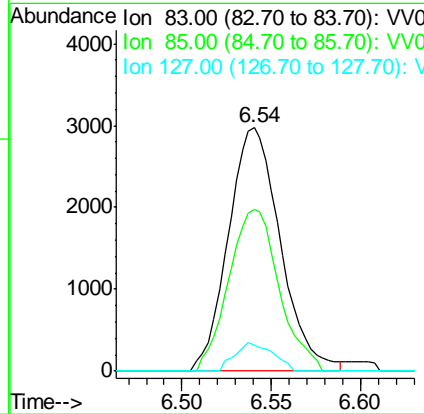
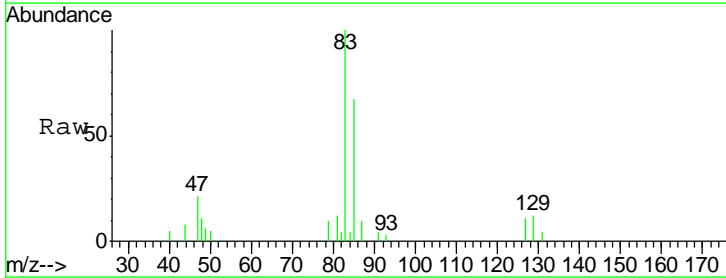
Manual Integrations
 APPROVED

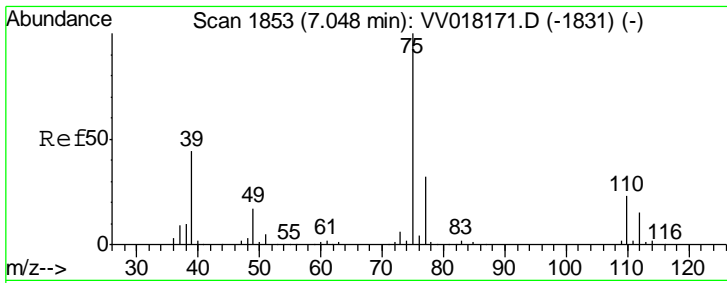
MMDadoda
 9/11/2020 10:28:51 AM



#38
 Bromodichloromethane
 Concen: 2.087 ug/L
 RT: 6.54 min Scan# 1695
 Delta R.T. 0.01 min
 Lab File: VV018184.D
 Acq: 10 Sep 2020 17:04

Tgt Ion	Resp	Lower	Upper
83	100		
85	66.5	44.7	82.9
127	10.9	6.7	10.1#





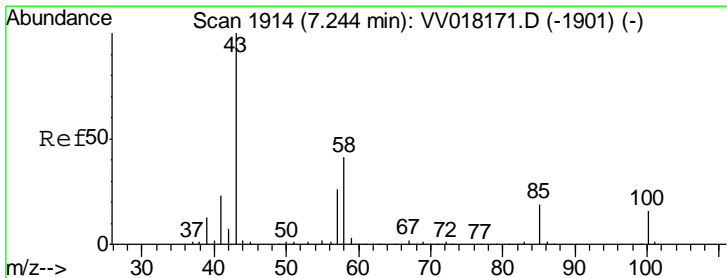
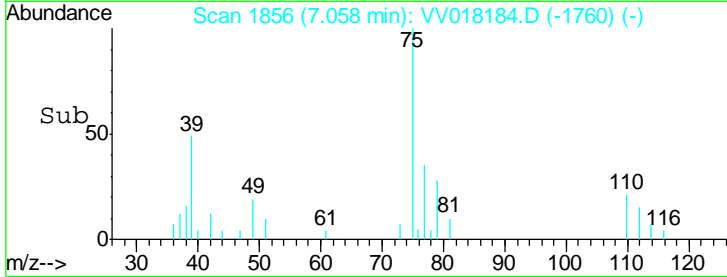
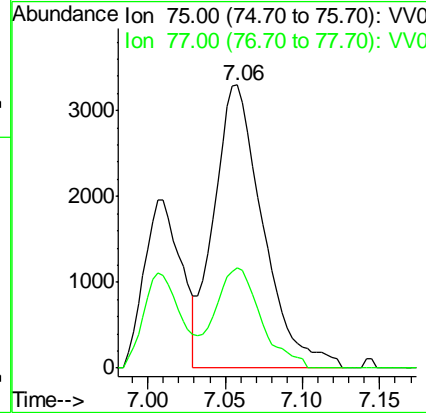
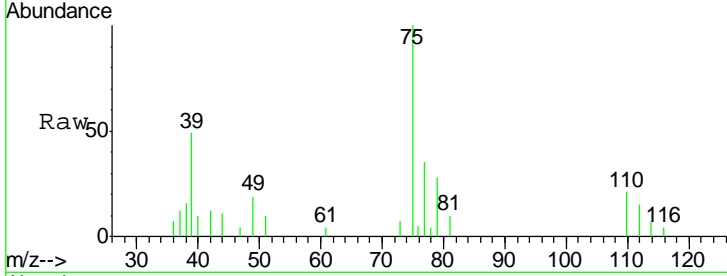
#39
 cis-1,3-Dichloropropene
 Concen: 2.135 ug/L
 RT: 7.06 min Scan# 1856
 Delta R.T. 0.01 min
 Lab File: VV018184.D
 Acq: 10 Sep 2020 17:04

Instrument : MSVOA_V
 ClientSampled : MDL02

Tgt Ion	Ratio	Lower	Upper
75	100		
77	35.5	22.3	41.3

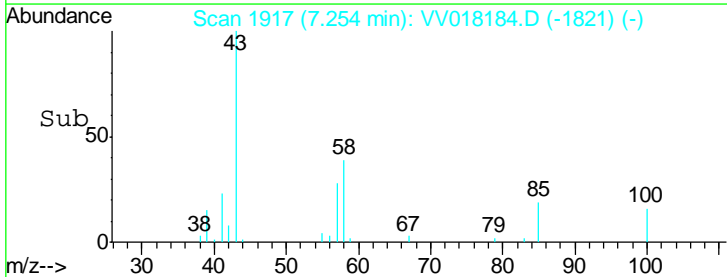
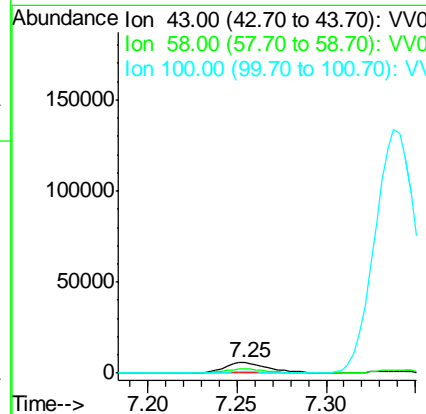
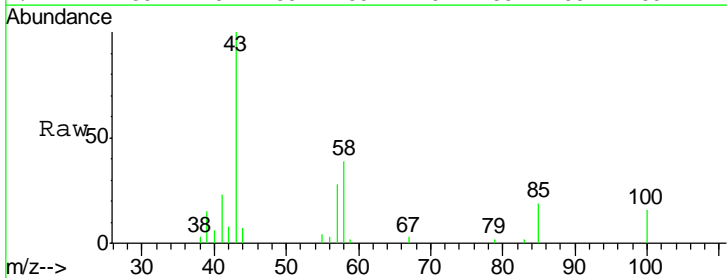
Manual Integrations
 APPROVED

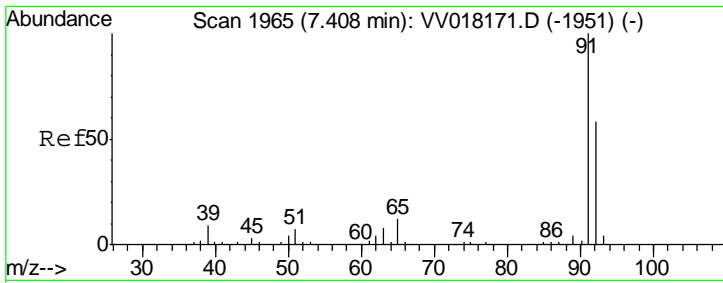
MMDadoda
 9/11/2020 10:28:51 AM



#40
 4-Methyl-2-pentanone
 Concen: 3.862 ug/L
 RT: 7.25 min Scan# 1917
 Delta R.T. 0.01 min
 Lab File: VV018184.D
 Acq: 10 Sep 2020 17:04

Tgt Ion	Ratio	Lower	Upper
43	100		
58	39.9	32.4	48.6
100	14.4	12.7	19.1



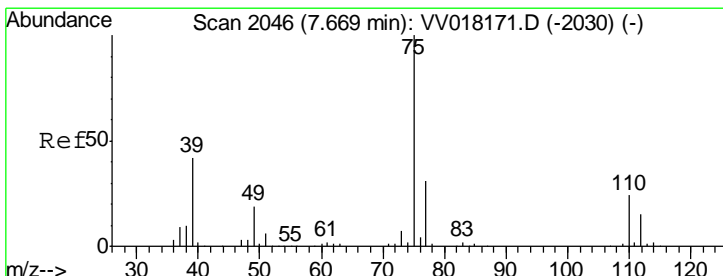
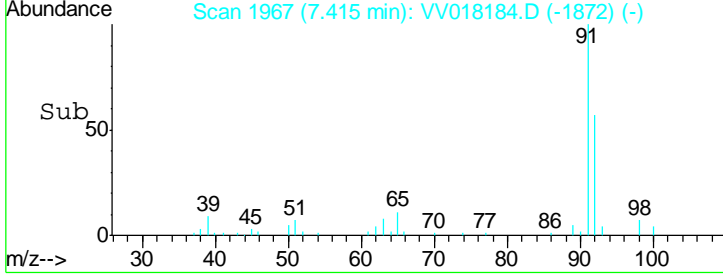
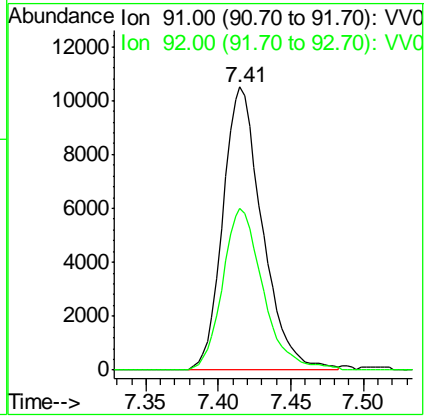
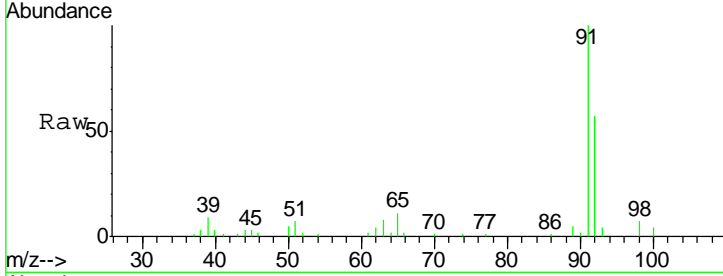


#42
 Toluene
 Concen: 2.235 ug/L
 RT: 7.41 min Scan# 1967
 Delta R.T. 0.01 min
 Lab File: VV018184.D
 Acq: 10 Sep 2020 17:04

Instrument : MSVOA_V
 ClientSampled : MDL02

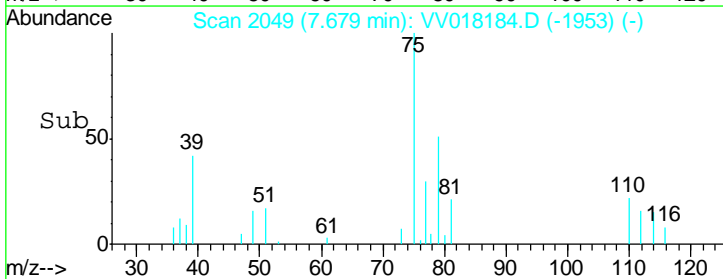
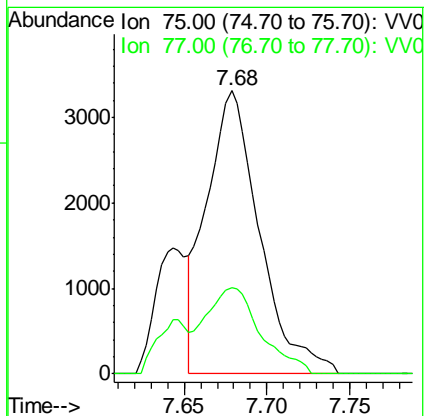
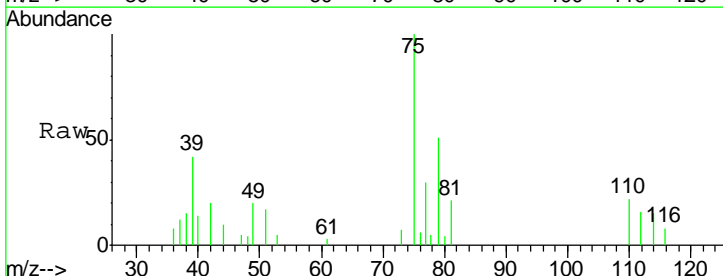
Tgt Ion	Resp	Lower	Upper
91	100		
92	57.1	40.7	75.5

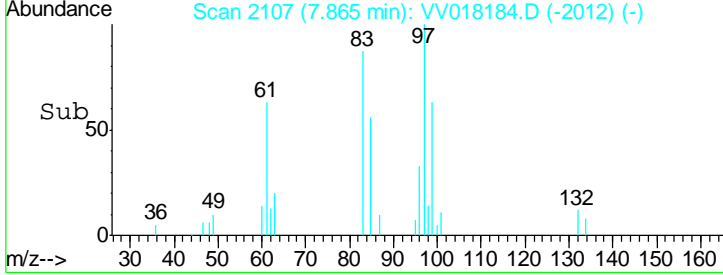
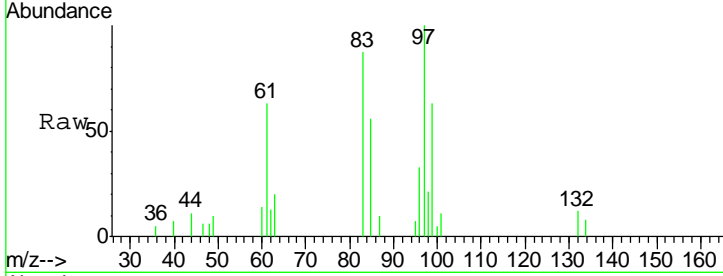
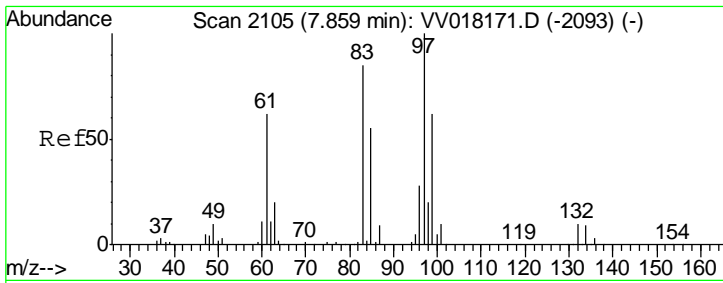
Manual Integrations APPROVED
 MMDadoda
 9/11/2020 10:28:51 AM



#44
 trans-1,3-Dichloropropene
 Concen: 2.205 ug/L
 RT: 7.68 min Scan# 2049
 Delta R.T. 0.01 min
 Lab File: VV018184.D
 Acq: 10 Sep 2020 17:04

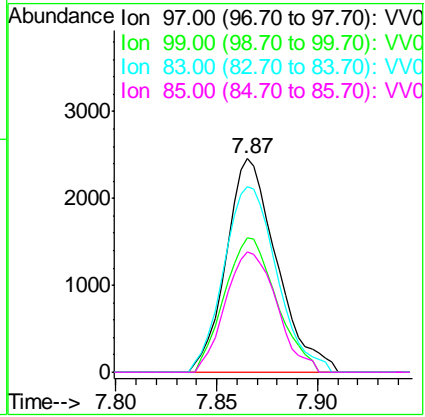
Tgt Ion	Resp	Lower	Upper
75	100		
77	30.3	22.3	41.5





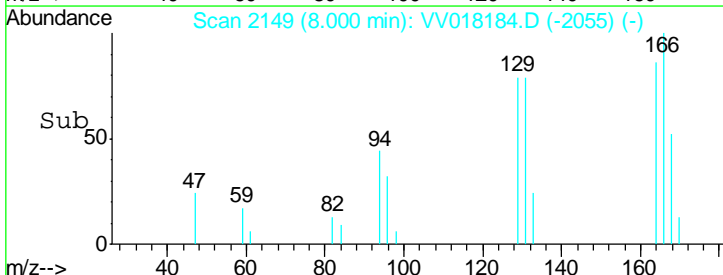
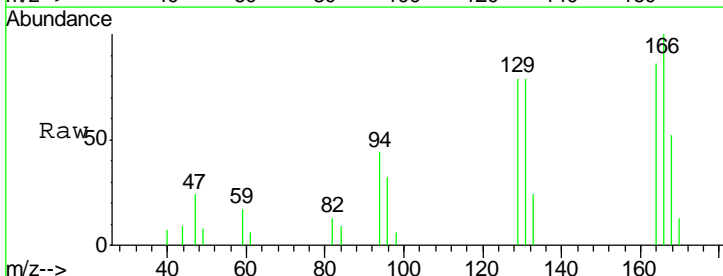
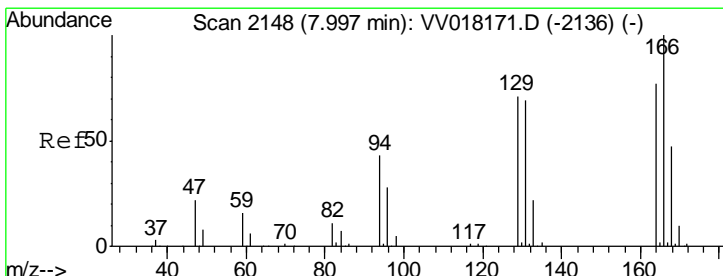
#45
 1,1,2-Trichloroethane
 Concen: 2.094 ug/L
 RT: 7.87 min Scan# 2107
 Delta R.T. 0.01 min
 Lab File: VV018184.D
 Acq: 10 Sep 2020 17:04

Tgt Ion	Resp	Lower	Upper
97	100		
99	63.2	43.7	81.1
83	86.9	59.9	111.3
85	56.2	37.6	69.8



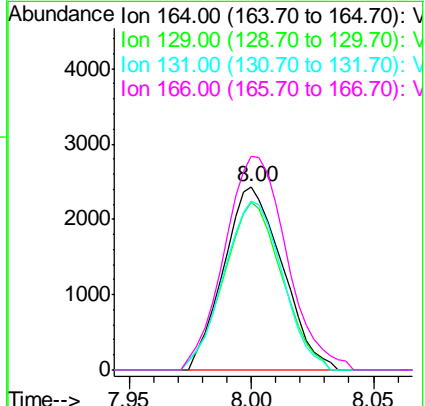
Instrument : MSVOA_V
 ClientSampled : MDL02

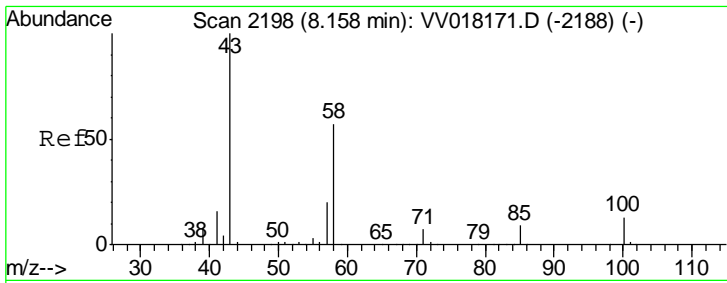
Manual Integrations
APPROVED
 MMDadoda
 9/11/2020 10:28:51 AM



#46
 Tetrachloroethene
 Concen: 2.269 ug/L
 RT: 8.00 min Scan# 2149
 Delta R.T. 0.00 min
 Lab File: VV018184.D
 Acq: 10 Sep 2020 17:04

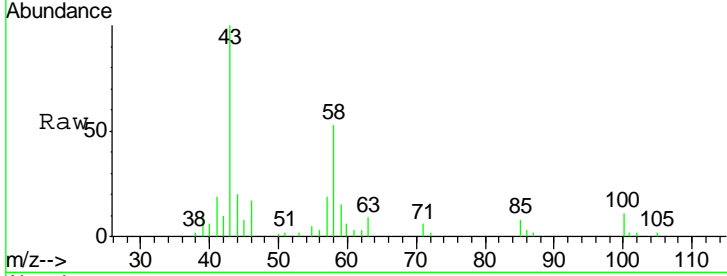
Tgt Ion	Resp	Lower	Upper
164	100		
129	91.5	64.5	119.7
131	92.2	61.8	114.8
166	116.4	90.6	168.2





#48
 2-Hexanone
 Concen: 7.034 ug/L
 RT: 8.16 min Scan# 2200
 Delta R.T. 0.01 min
 Lab File: VV018184.D
 Acq: 10 Sep 2020 17:04

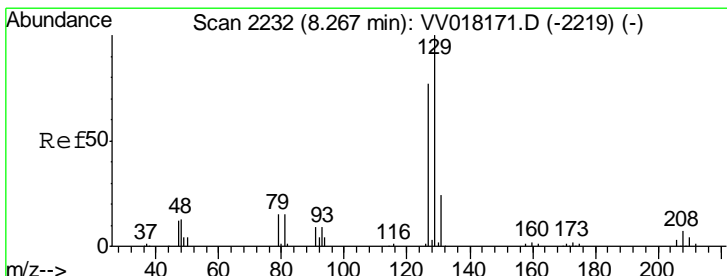
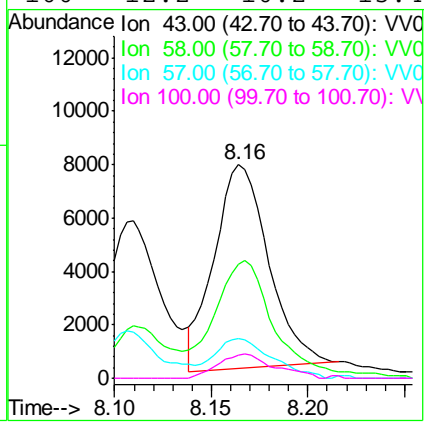
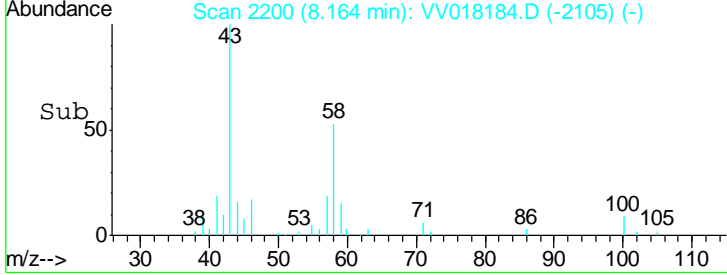
Instrument : MSVOA_V
 ClientSampled : MDL02



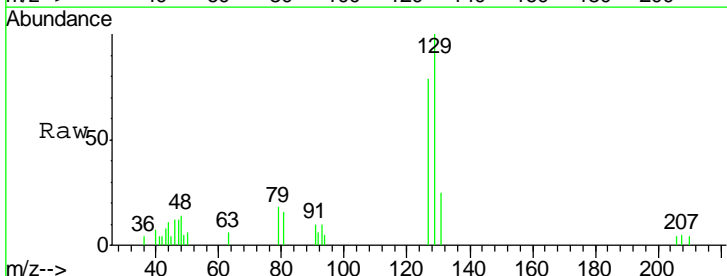
Tgt Ion: 43 Resp: 14935

Ion	Ratio	Lower	Upper
43	100		
58	64.6	44.8	67.2
57	20.6	15.8	23.6
100	12.2	10.2	15.4

Manual Integrations
APPROVED
 MMDadoda
 9/11/2020 10:28:51 AM

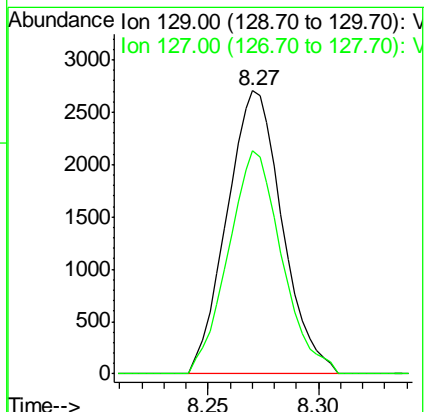
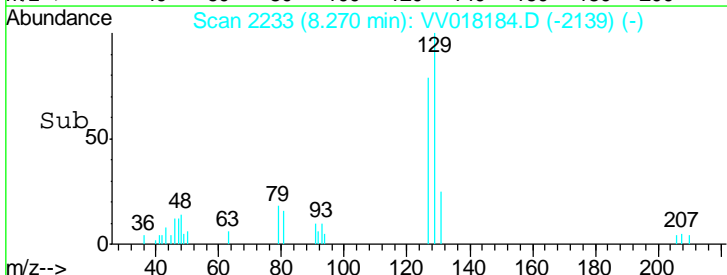


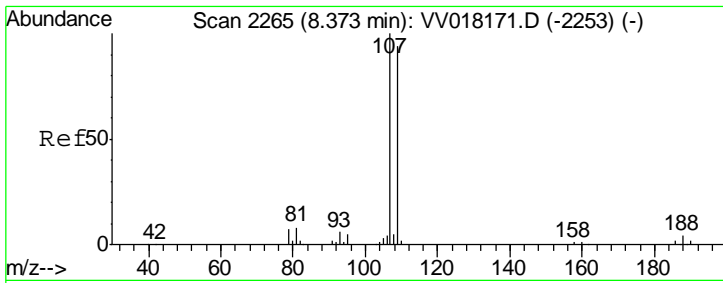
#49
 Dibromochloromethane
 Concen: 2.041 ug/L
 RT: 8.27 min Scan# 2233
 Delta R.T. 0.00 min
 Lab File: VV018184.D
 Acq: 10 Sep 2020 17:04



Tgt Ion: 129 Resp: 4713

Ion	Ratio	Lower	Upper
129	100		
127	78.8	54.5	101.1





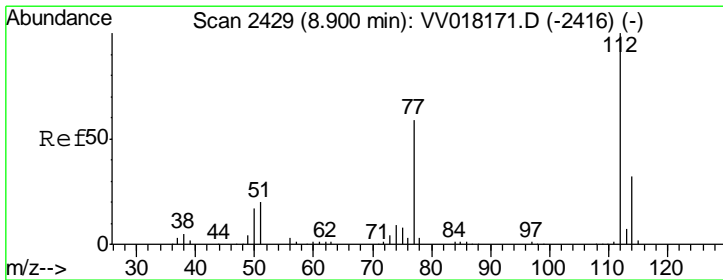
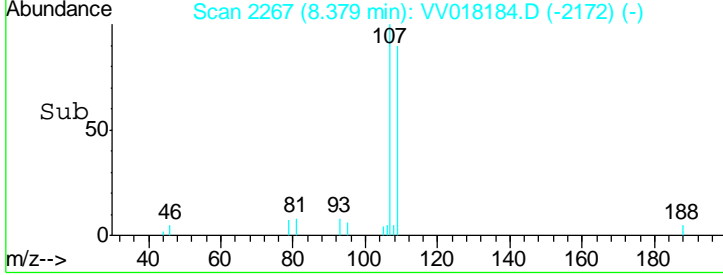
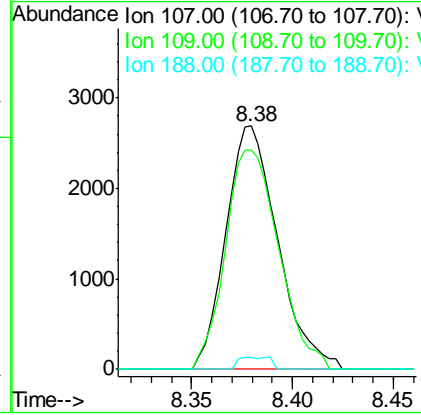
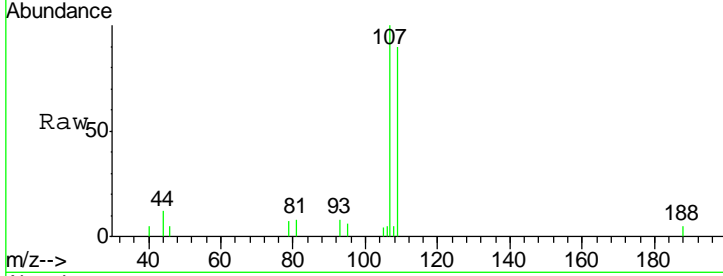
#50
 1,2-Dibromoethane
 Concen: 2.233 ug/L
 RT: 8.38 min Scan# 2267
 Delta R.T. 0.01 min
 Lab File: VV018184.D
 Acq: 10 Sep 2020 17:04

Instrument : MSVOA_V
 ClientSampled : MDL02

Tgt Ion	Resp	Lower	Upper
107	100		
109	90.0	66.1	122.8
188	5.1	3.2	4.8#

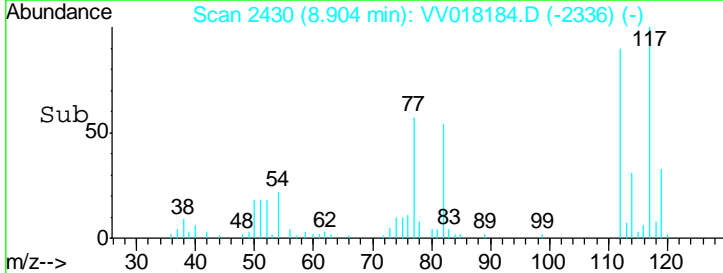
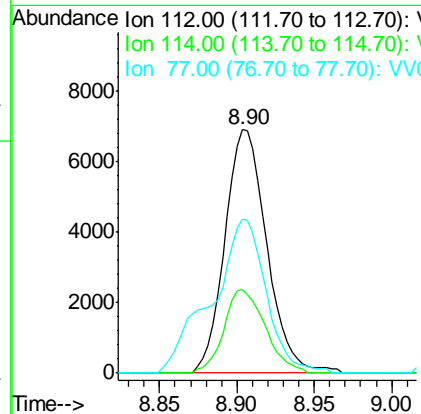
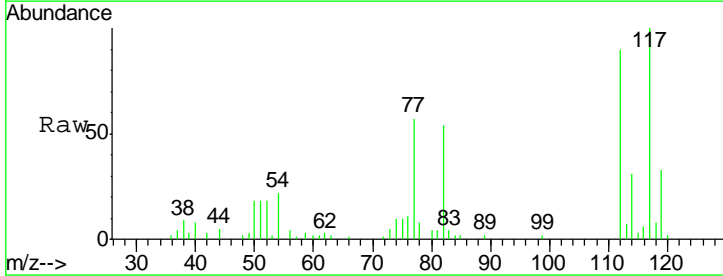
Manual Integrations
 APPROVED

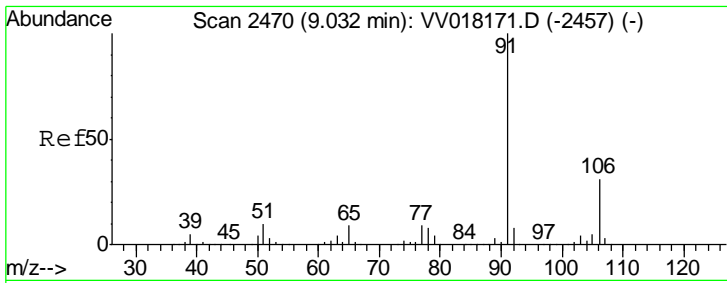
MMDadoda
 9/11/2020 10:28:51 AM



#51
 Chlorobenzene
 Concen: 2.259 ug/L
 RT: 8.90 min Scan# 2430
 Delta R.T. 0.00 min
 Lab File: VV018184.D
 Acq: 10 Sep 2020 17:04

Tgt Ion	Resp	Lower	Upper
112	100		
114	34.2	22.6	42.0
77	63.1	48.0	72.0



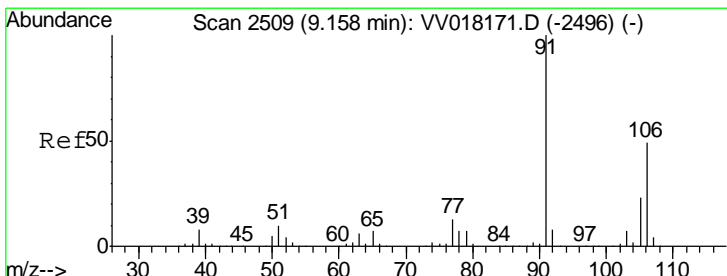
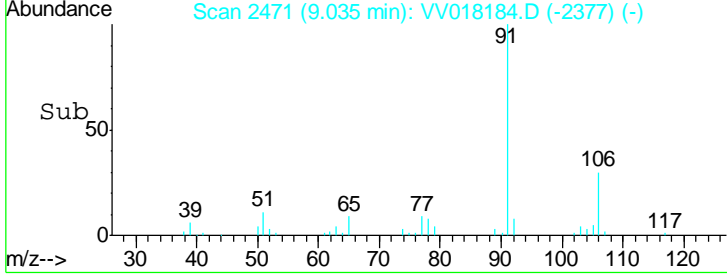
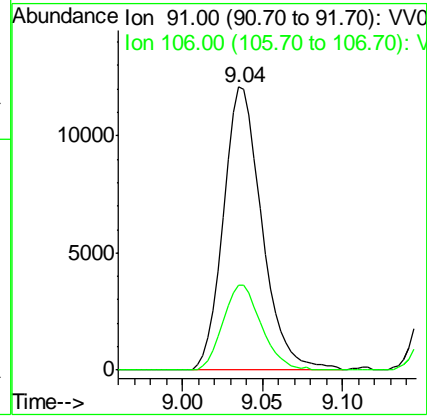
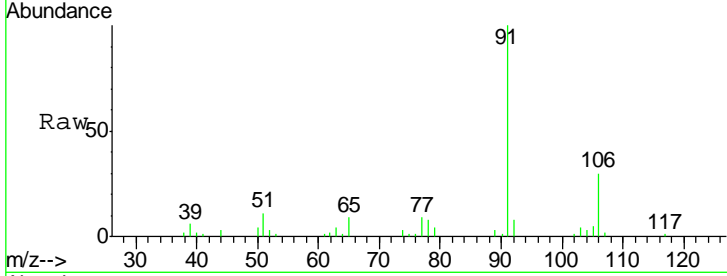


#52
Ethylbenzene
Concen: 2.061 ug/L
RT: 9.04 min Scan# 2471
Delta R.T. 0.00 min
Lab File: VV018184.D
Acq: 10 Sep 2020 17:04

Instrument : MSVOA_V
ClientSampled : MDL02

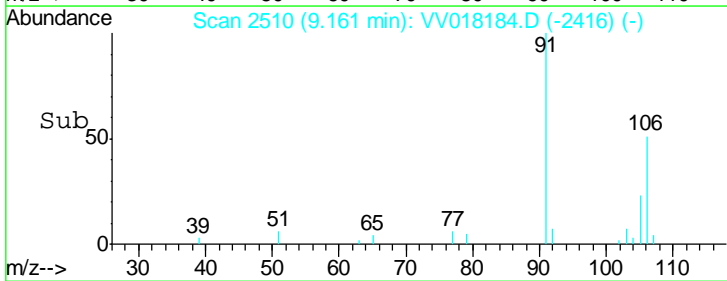
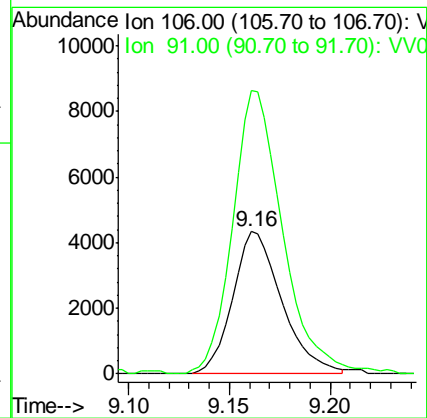
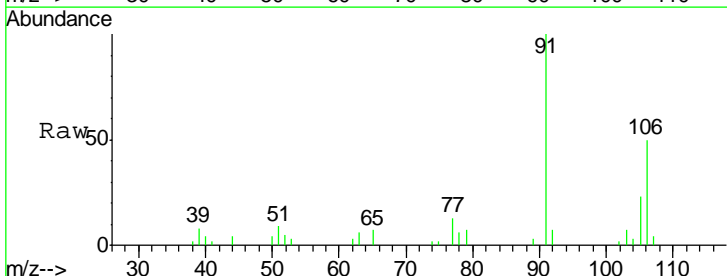
Tgt Ion	Resp	Lower	Upper
91	19950		
106	30.0	21.3	39.5

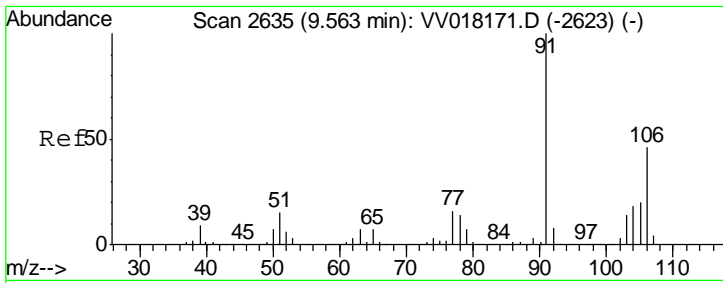
Manual Integrations APPROVED
MMDadoda
9/11/2020 10:28:51 AM



#53
m,p-Xylene
Concen: 2.049 ug/L
RT: 9.16 min Scan# 2510
Delta R.T. 0.00 min
Lab File: VV018184.D
Acq: 10 Sep 2020 17:04

Tgt Ion	Resp	Lower	Upper
106	7404		
91	198.7	146.7	272.5



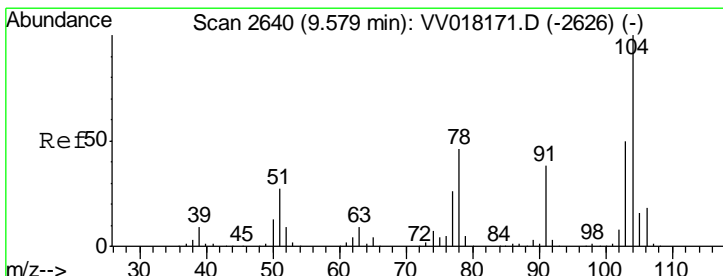
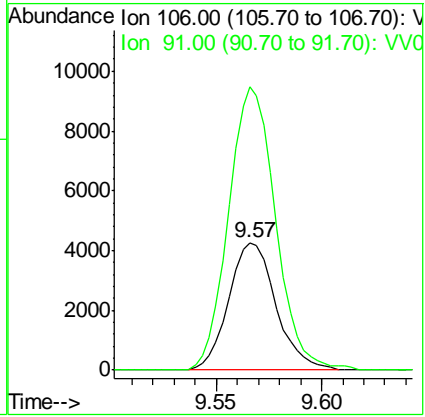
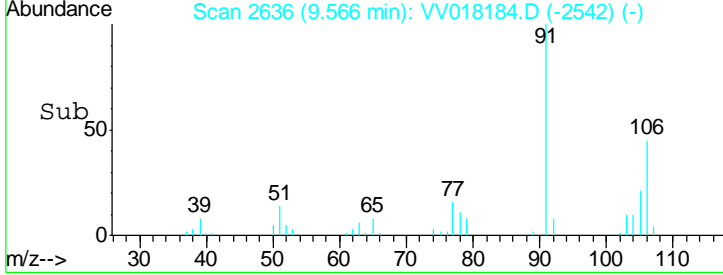
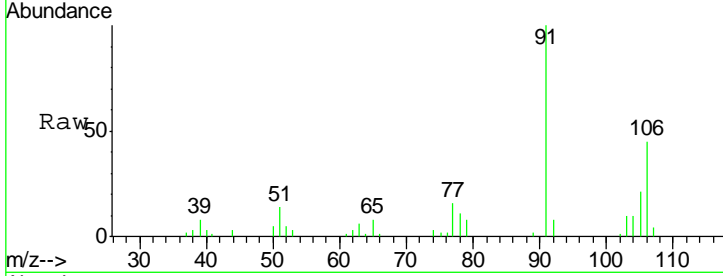


#54
 o-xylene
 Concen: 1.905 ug/L
 RT: 9.57 min Scan# 2636
 Delta R.T. 0.00 min
 Lab File: VV018184.D
 Acq: 10 Sep 2020 17:04

Instrument : MSVOA_V
 ClientSampled : MDL02

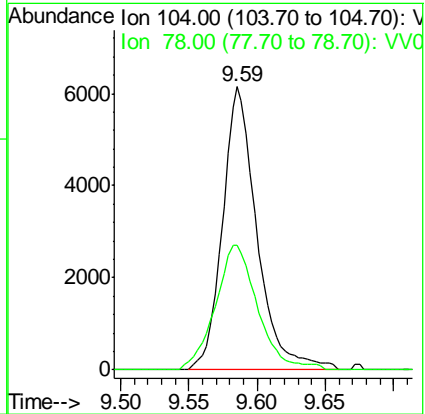
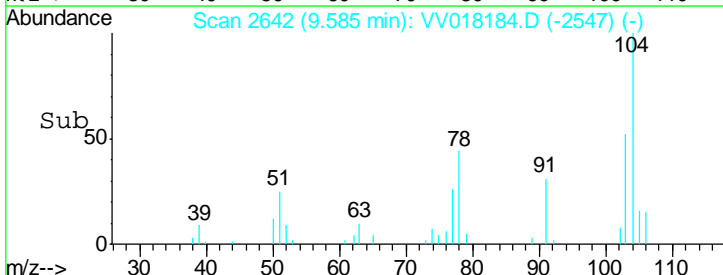
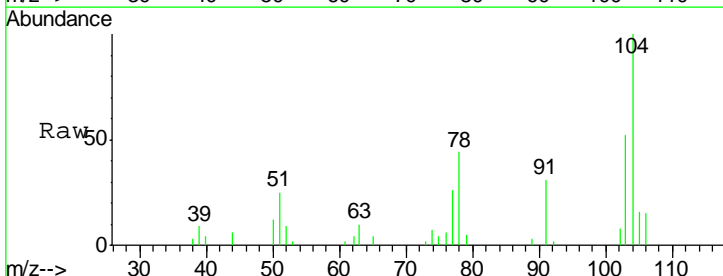
Tgt Ion	Resp	Lower	Upper
106	6632		
106	100		
91	221.6	152.2	282.6

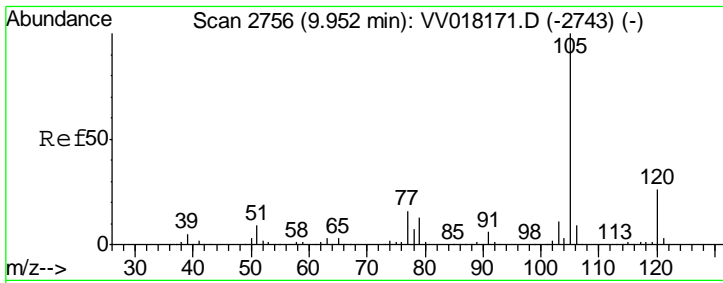
Manual Integrations
APPROVED
 MMDadoda
 9/11/2020 10:28:51 AM



#55
 Styrene
 Concen: 1.784 ug/L
 RT: 9.59 min Scan# 2642
 Delta R.T. 0.01 min
 Lab File: VV018184.D
 Acq: 10 Sep 2020 17:04

Tgt Ion	Resp	Lower	Upper
104	10790		
104	100		
78	43.9	31.4	58.2



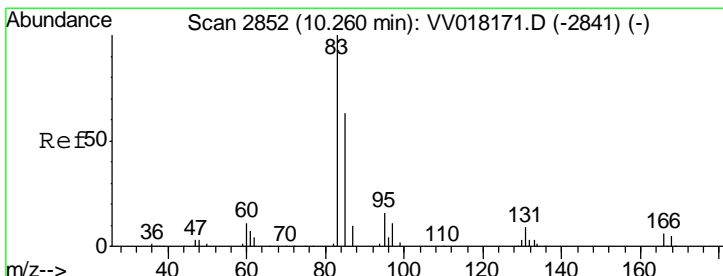
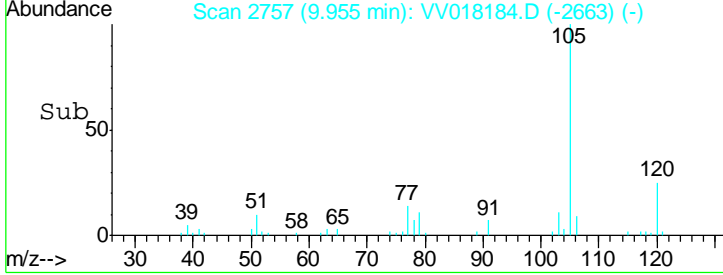
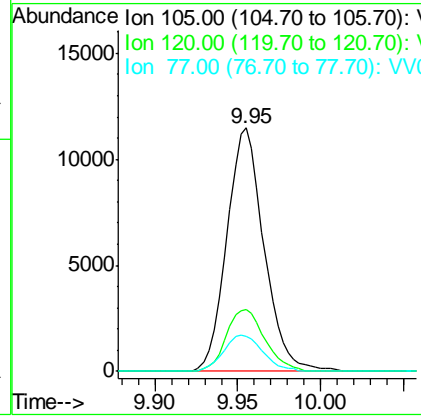
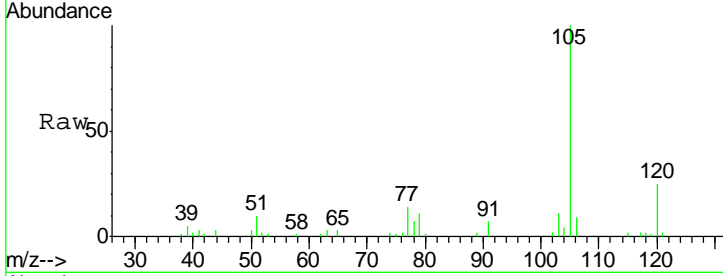


#56
 Isopropylbenzene
 Concen: 1.908 ug/L
 RT: 9.95 min Scan# 2757
 Delta R.T. 0.00 min
 Lab File: VV018184.D
 Acq: 10 Sep 2020 17:04

Instrument : MSVOA_V
 ClientSampled : MDL02

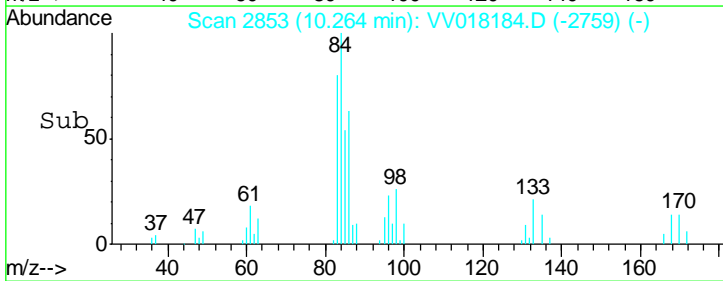
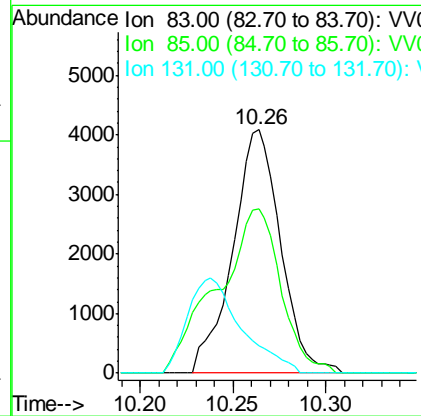
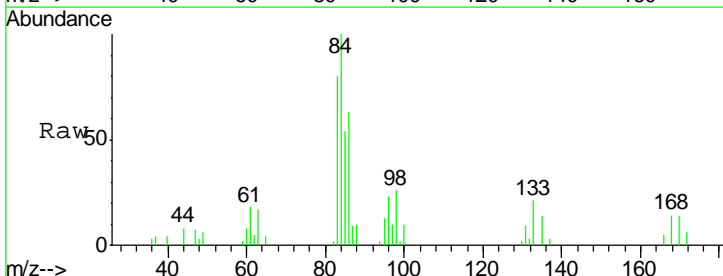
Tgt Ion	Resp	Lower	Upper
105	17896		
120	26.4	20.9	31.3
77	15.6	12.5	18.7

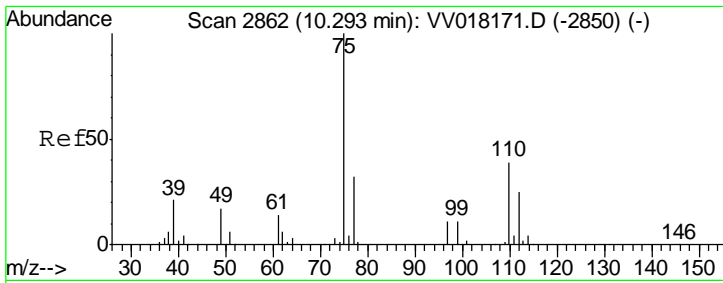
Manual Integrations
APPROVED
 MMDadoda
 9/11/2020 10:28:51 AM



#58
 1,1,2,2-Tetrachloroethane
 Concen: 2.399 ug/L
 RT: 10.26 min Scan# 2853
 Delta R.T. 0.00 min
 Lab File: VV018184.D
 Acq: 10 Sep 2020 17:04

Tgt Ion	Resp	Lower	Upper
83	7301		
85	67.5	45.8	85.2
131	11.1	8.0	12.0





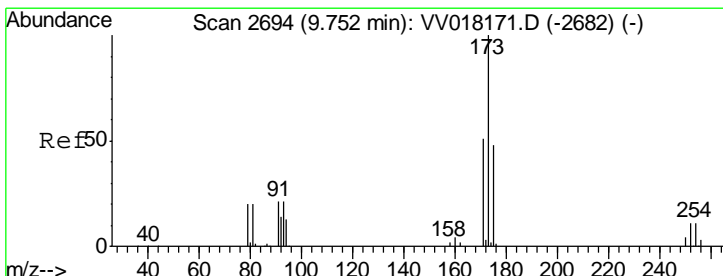
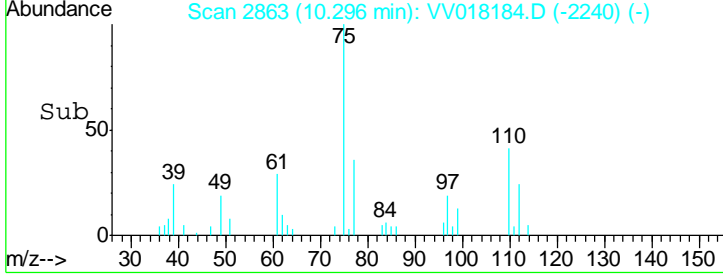
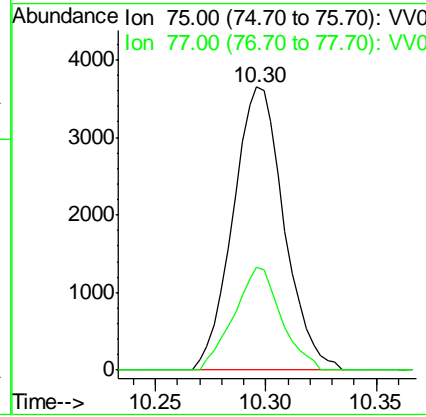
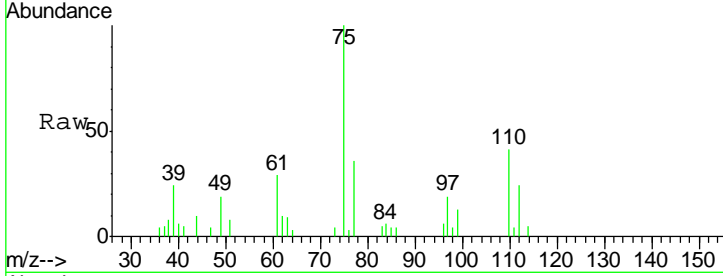
#59
 1,2,3-Trichloropropane
 Concen: 2.243 ug/L
 RT: 10.30 min Scan# 2863
 Delta R.T. 0.00 min
 Lab File: VV018184.D
 Acq: 10 Sep 2020 17:04

Instrument : MSVOA_V
 ClientSampled : MDL02

Tgt Ion	Resp	Lower	Upper
75	5856		
75	100		
77	33.7	25.8	38.6

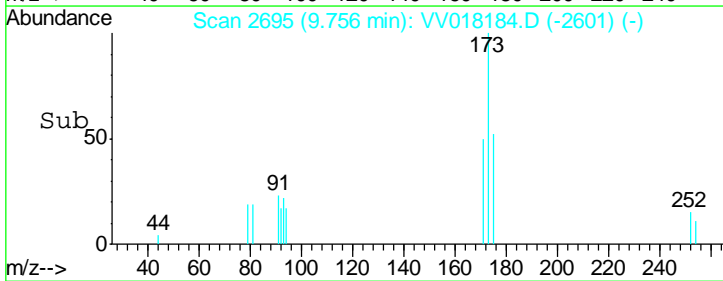
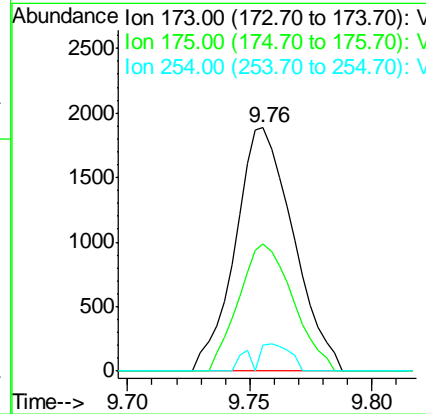
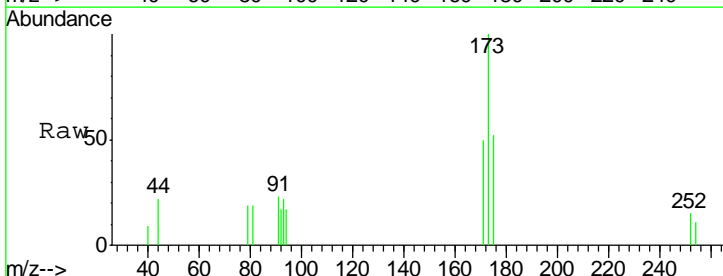
Manual Integrations
 APPROVED

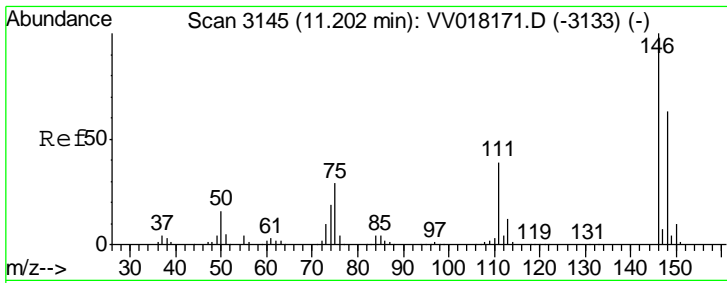
MMDadoda
 9/11/2020 10:28:51 AM



#61
 Bromoform
 Concen: 1.974 ug/L
 RT: 9.76 min Scan# 2695
 Delta R.T. 0.00 min
 Lab File: VV018184.D
 Acq: 10 Sep 2020 17:04

Tgt Ion	Resp	Lower	Upper
173	3113		
173	100		
175	49.1	39.0	58.6
254	5.5	9.0	13.4#





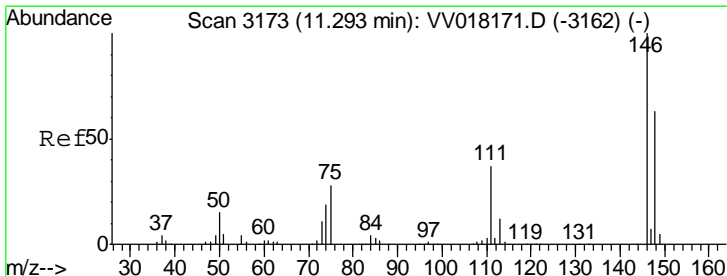
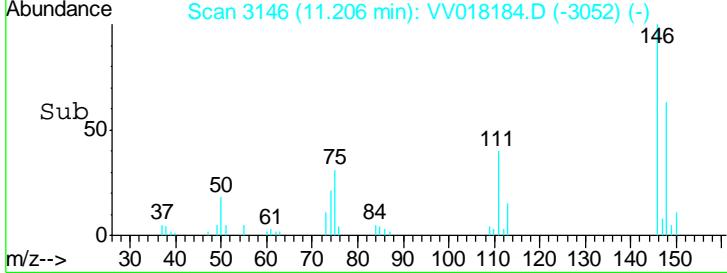
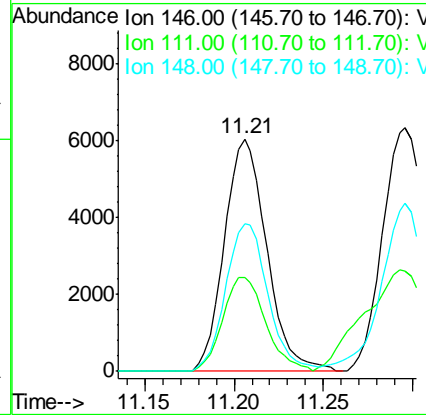
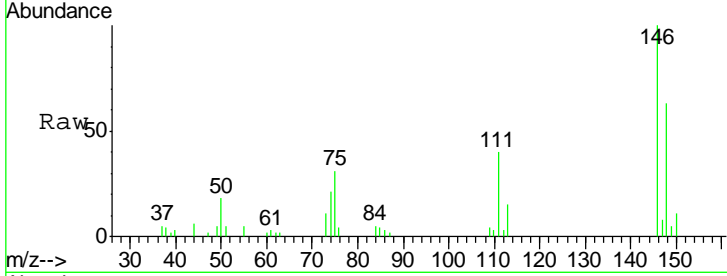
#62
 1,3-Dichlorobenzene
 Concen: 2.279 ug/L
 RT: 11.21 min Scan# 3146
 Delta R.T. 0.00 min
 Lab File: VV018184.D
 Acq: 10 Sep 2020 17:04

Instrument : MSVOA_V
 ClientSampled : MDL02

Tgt Ion	Ratio	Lower	Upper
146	100		
111	40.5	27.6	51.2
148	63.5	45.4	84.2

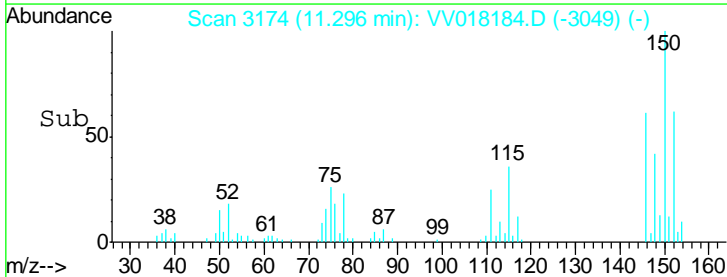
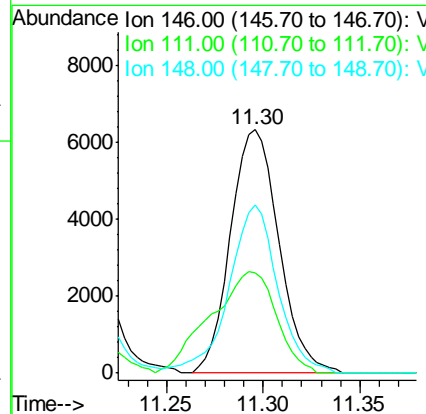
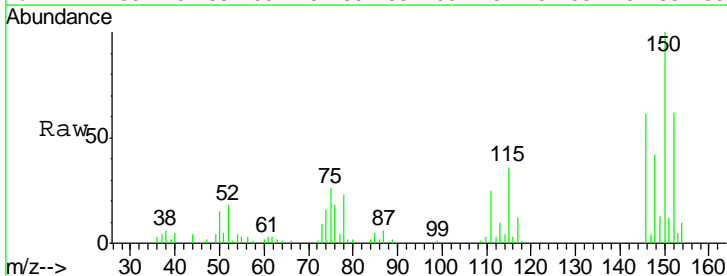
Manual Integrations
 APPROVED

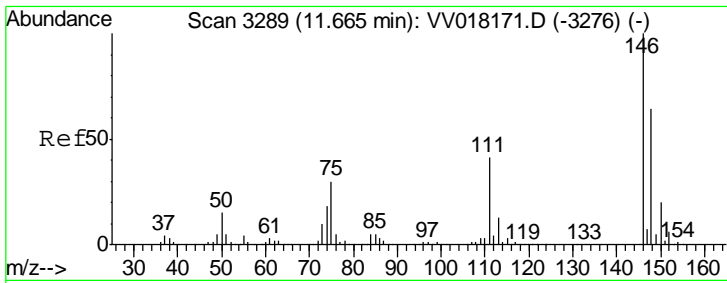
MMDadoda
 9/11/2020 10:28:51 AM



#63
 1,4-Dichlorobenzene
 Concen: 2.459 ug/L
 RT: 11.30 min Scan# 3174
 Delta R.T. 0.00 min
 Lab File: VV018184.D
 Acq: 10 Sep 2020 17:04

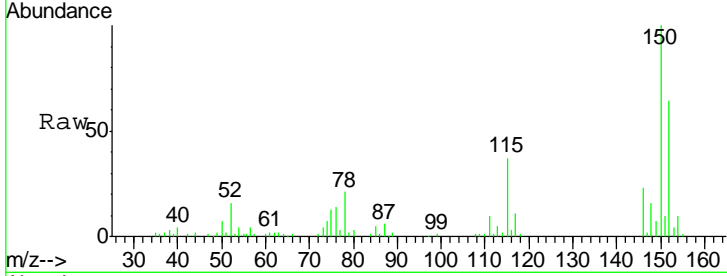
Tgt Ion	Ratio	Lower	Upper
146	100		
111	41.4	27.1	50.3
148	68.9	45.4	84.2





#65
 1,2-Dichlorobenzene
 Concen: 2.482 ug/L
 RT: 11.67 min Scan# 3289
 Delta R.T. 0.00 min
 Lab File: VV018184.D
 Acq: 10 Sep 2020 17:04

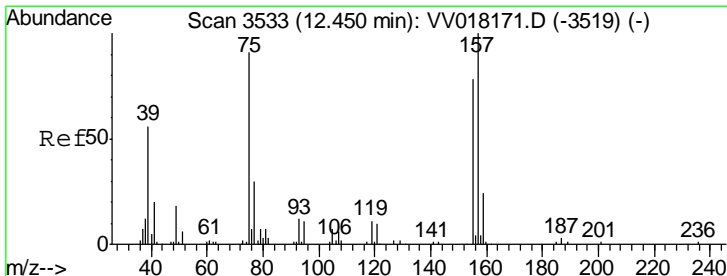
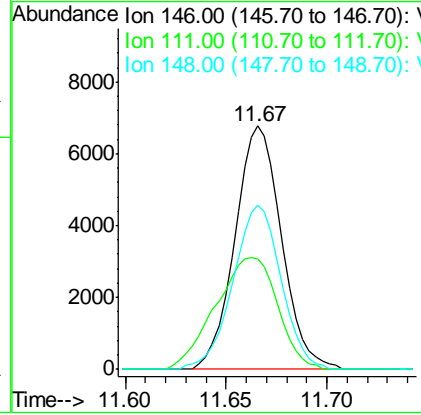
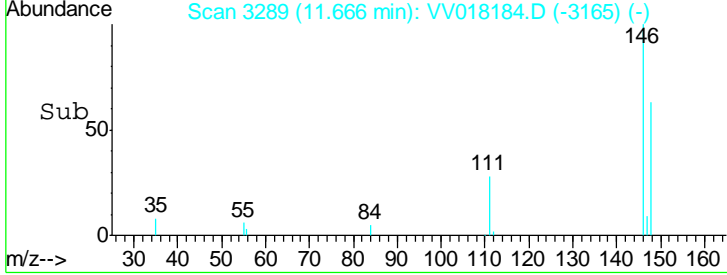
Instrument : MSVOA_V
 ClientSampled : MDL02



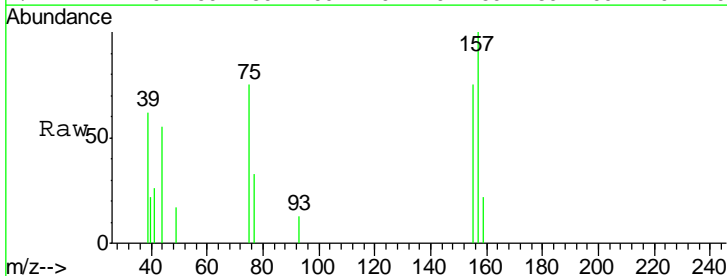
Tgt Ion: 146 Resp: 10949

Ion	Ratio	Lower	Upper
146	100		
111	45.2	32.8	49.2
148	67.5	50.7	76.1

Manual Integrations
APPROVED
 MMDadoda
 9/11/2020 10:28:51 AM

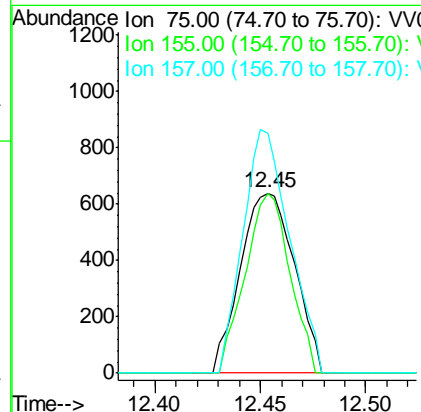
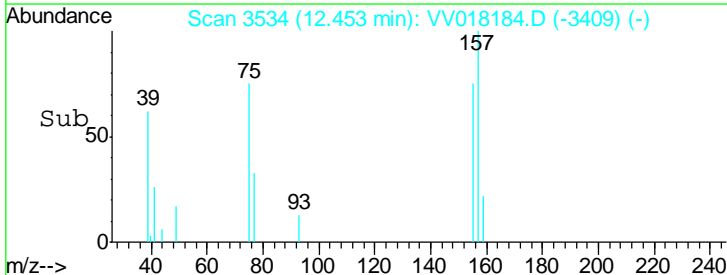


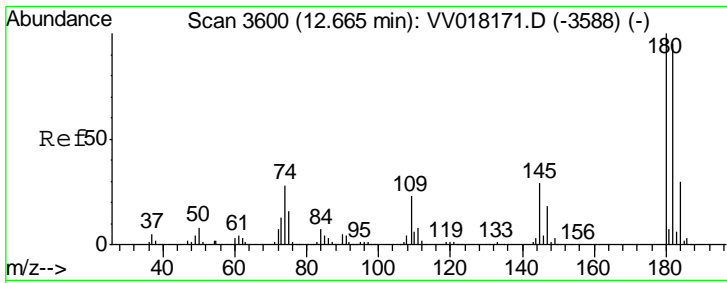
#66
 1,2-Dibromo-3-chloropropane
 Concen: 1.818 ug/L
 RT: 12.45 min Scan# 3534
 Delta R.T. 0.00 min
 Lab File: VV018184.D
 Acq: 10 Sep 2020 17:04



Tgt Ion: 75 Resp: 1132

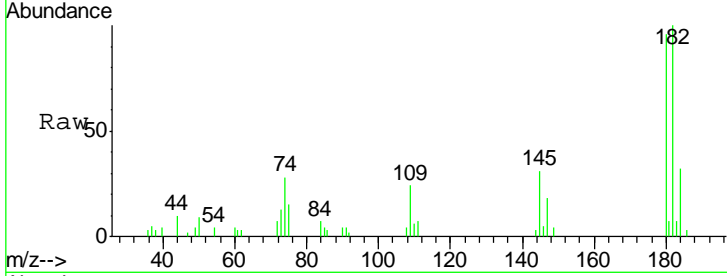
Ion	Ratio	Lower	Upper
75	100		
155	99.4	69.7	104.5
157	133.0	88.2	132.4#





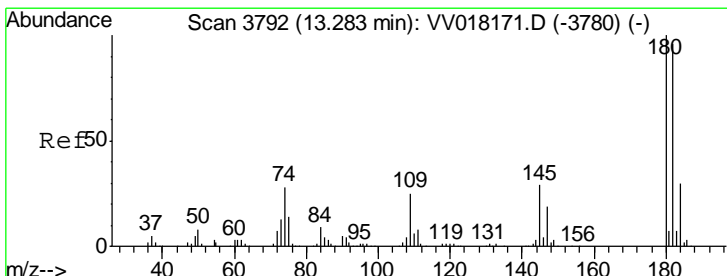
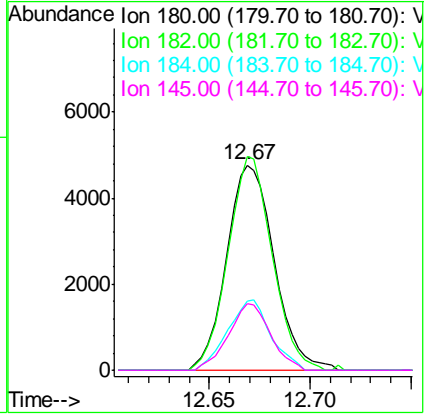
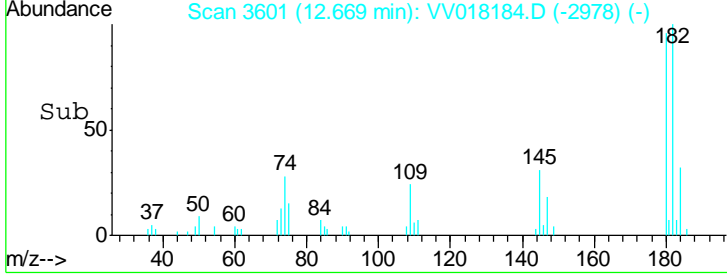
#67
 1,3,5-Trichlorobenzene
 Concen: 2.288 ug/L
 RT: 12.67 min Scan# 3601
 Delta R.T. 0.00 min
 Lab File: VV018184.D
 Acq: 10 Sep 2020 17:04

Instrument : MSVOA_V
 ClientSampled : MDL02

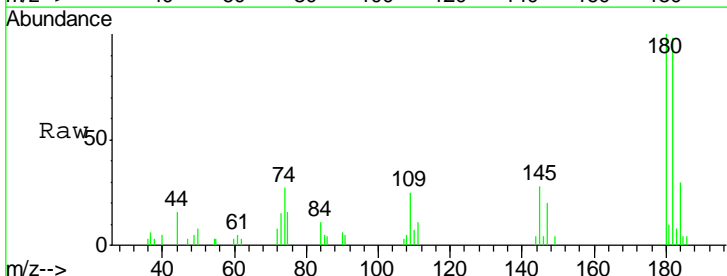


Tgt Ion	Resp	Lower	Upper
180	100		
182	96.8	76.8	115.2
184	31.0	24.6	36.8
145	28.7	22.7	34.1

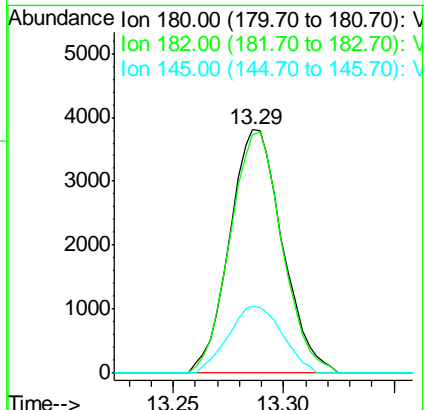
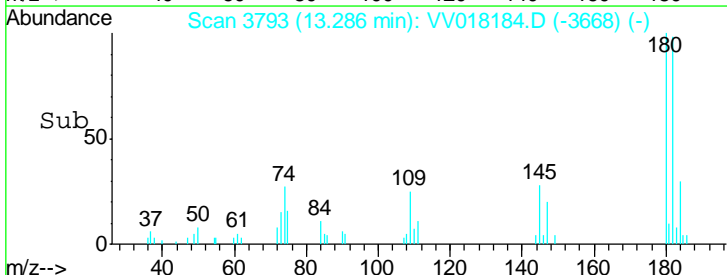
Manual Integrations
APPROVED
 MMDadoda
 9/11/2020 10:28:51 AM

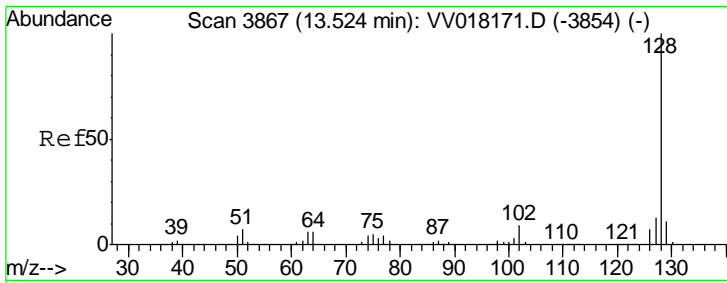


#68
 1,2,4-trichlorobenzene
 Concen: 2.061 ug/L
 RT: 13.29 min Scan# 3793
 Delta R.T. 0.00 min
 Lab File: VV018184.D
 Acq: 10 Sep 2020 17:04



Tgt Ion	Resp	Lower	Upper
180	100		
182	97.3	77.4	116.2
145	28.1	23.2	34.8





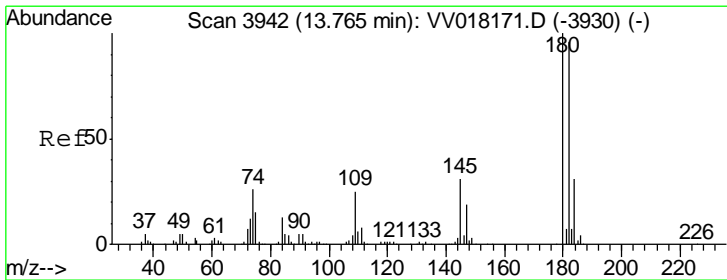
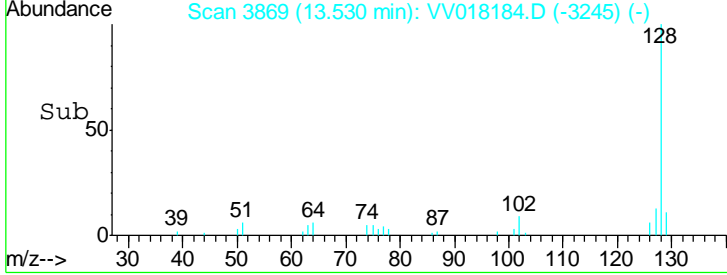
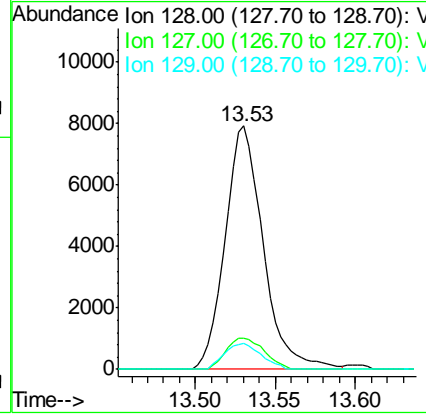
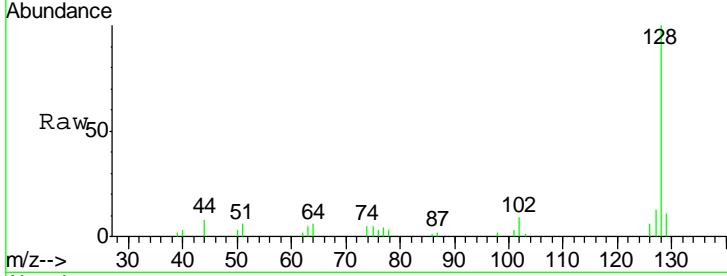
#69
 Naphthalene
 Concen: 1.666 ug/L
 RT: 13.53 min Scan# 3869
 Delta R.T. 0.01 min
 Lab File: VV018184.D
 Acq: 10 Sep 2020 17:04

Instrument : MSVOA_V
 ClientSampled : MDL02

Tgt Ion	Resp	Lower	Upper
128	12916		
127	12.9	10.6	15.8
129	10.3	8.6	13.0

Manual Integrations
 APPROVED

MMDadoda
 9/11/2020 10:28:51 AM



#70
 1,2,3-Trichlorobenzene
 Concen: 2.032 ug/L
 RT: 13.77 min Scan# 3943
 Delta R.T. 0.00 min
 Lab File: VV018184.D
 Acq: 10 Sep 2020 17:04

Tgt Ion	Resp	Lower	Upper
180	6132		
182	92.8	76.5	114.7
145	29.4	24.9	37.3

