

Data Path : Z:\voasrv\HPCHEM1\MSVOA_V\Data\VV091223\
 Data File : VV032043.D
 Acq On : 12 Sep 2023 13:07
 Operator : SY/MD
 Sample : 04387-17
 Misc : 5.0mL/MSVOA_V/WATER
 ALS Vial : 5 Sample Multiplier: 1

Instrument :
 MSVOA_V
 ClientSampleId :
 COAL3

Integration Parameters: LSCINT.P

Integrator: RTE
 Smoothing : OFF
 Sampling : 1
 Start Thrs : 0.2
 Stop Thrs : 0

Filtering: 5
 Min Area: 0 % of largest Peak
 Max Peaks: 100
 Peak Location: TOP

If leading or trailing edge < 100 prefer < Baseline drop else tangent >
 Peak separation: 5

Method : Z:\voasrv\HPCHEM1\MSVOA_V\Method\SFAMVLM082323WMA.M
 Title : VOC Analysis

Signal : TIC: VV032043.D\data.ms

peak #	R.T. min	first scan	max scan	last scan	PK TY	peak height	corr. area	corr. % max.	% of total
1	1.278	67	74	87	rBV	123597	132165	13.93%	1.842%
2	1.529	146	152	171	rVB	101371	121980	12.85%	1.700%
3	2.056	308	316	329	rBV	187920	271927	28.65%	3.790%
4	2.635	494	496	498	rBV3	417	247	0.03%	0.003%
5	2.706	510	518	520	rBV3	738	946	0.10%	0.013%
6	2.857	562	565	569	rBV4	471	359	0.04%	0.005%
7	3.053	624	626	629	rBV2	414	298	0.03%	0.004%
8	3.117	643	646	649	rBV2	329	177	0.02%	0.002%
9	3.143	652	654	658	rVB	344	196	0.02%	0.003%
10	3.172	658	663	666	rBV4	345	380	0.04%	0.005%
11	3.272	691	694	696	rBV2	306	225	0.02%	0.003%
12	3.323	705	710	715	rBV3	459	397	0.04%	0.006%
13	3.349	715	718	721	rBV2	355	210	0.02%	0.003%
14	3.471	752	756	758	rBV3	351	260	0.03%	0.004%
15	3.487	758	761	767	rVV5	545	508	0.05%	0.007%
16	3.564	782	785	788	rVV	295	236	0.02%	0.003%
17	3.680	817	821	822	rBV	274	188	0.02%	0.003%
18	3.690	822	824	827	rVB3	362	189	0.02%	0.003%
19	3.709	827	830	835	rBV2	333	276	0.03%	0.004%
20	3.786	843	854	885	rBV	79905	220277	23.21%	3.070%
21	4.249	983	998	1027	rBV	140621	362539	38.20%	5.053%
22	4.500	1073	1076	1077	rBV3	546	261	0.03%	0.004%
23	4.699	1134	1138	1142	rBV3	465	422	0.04%	0.006%
24	4.731	1145	1148	1153	rVB3	672	550	0.06%	0.008%
25	4.809	1168	1172	1178	rBV3	531	410	0.04%	0.006%
26	4.841	1180	1182	1188	rBV2	570	471	0.05%	0.007%
27	4.876	1189	1193	1195	rBV2	334	217	0.02%	0.003%
28	4.956	1202	1218	1248	rBV2	360302	949032	100.00%	13.227%
29	5.310	1324	1328	1330	rBV3	542	399	0.04%	0.006%
30	5.397	1353	1355	1361	rBV3	654	526	0.06%	0.007%
31	5.432	1364	1366	1369	rBV3	494	312	0.03%	0.004%
32	5.535	1386	1398	1424	rBV	253619	533356	56.20%	7.434%
33	5.763	1467	1469	1474	rBV3	544	396	0.04%	0.006%
34	5.828	1477	1489	1508	rBV2	20371	45019	4.74%	0.627%
35	5.989	1525	1539	1575	rBV	212127	452522	47.68%	6.307%
36	6.265	1623	1625	1627	rVB2	341	174	0.02%	0.002%

Data Path : Z:\voasrv\HPCHEM1\MSVOA_V\Data\VW091223\
 Data File : VW032043.D
 Acq On : 12 Sep 2023 13:07
 Operator : SY/MD
 Sample : 04387-17
 Misc : 5.0mL/MSVOA_V/WATER
 ALS Vial : 5 Sample Multiplier: 1

Instrument :
 MSVOA_V
 ClientSampleId :
 COAL3

Integration Parameters: LSCINT.P

Integrator: RTE
 Smoothing : OFF
 Sampling : 1
 Start Thrs : 0.2
 Stop Thrs : 0

Filtering: 5
 Min Area: 0 % of largest Peak
 Max Peaks: 100
 Peak Location: TOP

If leading or trailing edge < 100 prefer < Baseline drop else tangent >
 Peak separation: 5

Method : Z:\voasrv\HPCHEM1\MSVOA_V\Method\SFAMVLM082323WMA.M
 Title : VOC Analysis

37	6.358	1649	1654	1658	rVB2	571	367	0.04%	0.005%
38	6.455	1681	1684	1685	rBV2	711	365	0.04%	0.005%
39	6.506	1698	1700	1702	rBV2	720	332	0.03%	0.005%
40	6.583	1721	1724	1726	rBV4	764	517	0.05%	0.007%
41	6.616	1732	1734	1735	rBV	585	251	0.03%	0.003%
42	6.747	1771	1775	1776	rBV2	262	189	0.02%	0.003%
43	6.857	1807	1809	1814	rBV2	300	225	0.02%	0.003%
44	6.915	1816	1827	1859	rBV	117554	228515	24.08%	3.185%
45	7.246	1919	1930	1970	rBV	415269	751796	79.22%	10.478%
46	7.554	2017	2026	2048	rBV	80608	147142	15.50%	2.051%
47	7.879	2117	2127	2138	rBV2	12536	22171	2.34%	0.309%
48	7.979	2155	2158	2162	rVB4	696	555	0.06%	0.008%
49	8.027	2164	2173	2208	rBV	217200	441244	46.49%	6.150%
50	8.400	2286	2289	2293	rBV3	526	433	0.05%	0.006%
51	8.673	2372	2374	2377	rVB3	386	201	0.02%	0.003%
52	8.709	2383	2385	2387	rBV	324	178	0.02%	0.002%
53	8.789	2398	2410	2433	rBV	386302	655815	69.10%	9.141%
54	8.998	2473	2475	2477	rVB	771	292	0.03%	0.004%
55	9.127	2513	2515	2518	rBV2	407	230	0.02%	0.003%
56	9.194	2534	2536	2541	rVB2	488	250	0.03%	0.003%
57	9.329	2577	2578	2583	rVB3	438	211	0.02%	0.003%
58	9.352	2583	2585	2587	rBV2	407	250	0.03%	0.003%
59	9.384	2591	2595	2598	rBV2	361	300	0.03%	0.004%
60	9.496	2625	2630	2634	rBV2	701	745	0.08%	0.010%
61	9.612	2661	2666	2667	rBV3	234	223	0.02%	0.003%
62	9.632	2670	2672	2677	rBV2	305	279	0.03%	0.004%
63	9.677	2683	2686	2688	rVB2	495	238	0.03%	0.003%
64	9.789	2719	2721	2724	rVB3	552	319	0.03%	0.004%
65	9.918	2756	2761	2767	rVB2	398	320	0.03%	0.004%
66	9.956	2767	2773	2780	rBV3	434	557	0.06%	0.008%
67	10.001	2784	2787	2788	rVV2	401	204	0.02%	0.003%
68	10.156	2823	2835	2853	rBV	257725	406594	42.84%	5.667%
69	10.329	2880	2889	2900	rVB2	14912	23036	2.43%	0.321%
70	10.400	2908	2911	2915	rVB2	385	308	0.03%	0.004%
71	10.432	2915	2921	2923	rBV2	573	466	0.05%	0.006%
72	10.593	2967	2971	2973	rBV3	422	341	0.04%	0.005%
73	10.638	2983	2985	2989	rBV2	435	330	0.03%	0.005%
74	10.747	3014	3019	3022	rBV3	512	512	0.05%	0.007%
75	10.895	3063	3065	3067	rBV2	364	164	0.02%	0.002%
76	11.004	3094	3099	3101	rBV2	568	454	0.05%	0.006%

Data Path : Z:\voasrv\HPCHEM1\MSVOA_V\Data\VW091223\
 Data File : VW032043.D
 Acq On : 12 Sep 2023 13:07
 Operator : SY/MD
 Sample : 04387-17
 Misc : 5.0mL/MSVOA_V/WATER
 ALS Vial : 5 Sample Multiplier: 1

Instrument :
 MSVOA_V
 ClientSampleId :
 COAL3

Integration Parameters: LSCINT.P

Integrator: RTE
 Smoothing : OFF Filtering: 5
 Sampling : 1 Min Area: 0 % of largest Peak
 Start Thrs: 0.2 Max Peaks: 100
 Stop Thrs : 0 Peak Location: TOP

If leading or trailing edge < 100 prefer < Baseline drop else tangent >
 Peak separation: 5

Method : Z:\voasrv\HPCHEM1\MSVOA_V\Method\SFAMVLM082323WMA.M
 Title : VOC Analysis

77	11.133	3133	3139	3144	rBV4	1315	1350	0.14%	0.019%
78	11.188	3145	3156	3185	rVV	426405	674639	71.09%	9.403%
79	11.426	3227	3230	3234	rBV	439	357	0.04%	0.005%
80	11.506	3245	3255	3261	rBV4	5334	10378	1.09%	0.145%
81	11.564	3263	3273	3295	rVB	431638	677623	71.40%	9.445%
82	11.937	3386	3389	3391	rBV3	547	354	0.04%	0.005%
83	11.982	3401	3403	3407	rVB4	471	256	0.03%	0.004%
84	12.149	3453	3455	3459	rVB3	418	250	0.03%	0.003%
85	12.197	3463	3470	3479	rVB	4715	6623	0.70%	0.092%
86	12.297	3492	3501	3502	rBV3	2054	2050	0.22%	0.029%
87	12.342	3512	3515	3517	rBV3	793	391	0.04%	0.005%
88	12.474	3552	3556	3560	rBV3	623	506	0.05%	0.007%
89	12.519	3568	3570	3573	rBV2	369	198	0.02%	0.003%
90	12.641	3606	3608	3613	rVB4	494	413	0.04%	0.006%
91	12.683	3619	3621	3625	rBV5	505	415	0.04%	0.006%
92	12.766	3645	3647	3651	rVB2	375	168	0.02%	0.002%
93	12.908	3688	3691	3694	rBV3	412	255	0.03%	0.004%
94	13.188	3775	3778	3779	rBV2	478	240	0.03%	0.003%
95	13.281	3805	3807	3812	rVB3	434	254	0.03%	0.004%
96	13.368	3832	3834	3836	rBV2	399	195	0.02%	0.003%
97	13.451	3852	3860	3870	rBV2	5414	8677	0.91%	0.121%
98	13.689	3929	3934	3941	rBV5	1999	2245	0.24%	0.031%
99	13.959	4015	4018	4021	rBV2	608	545	0.06%	0.008%
100	14.168	4077	4083	4093	rVB8	827	1419	0.15%	0.020%

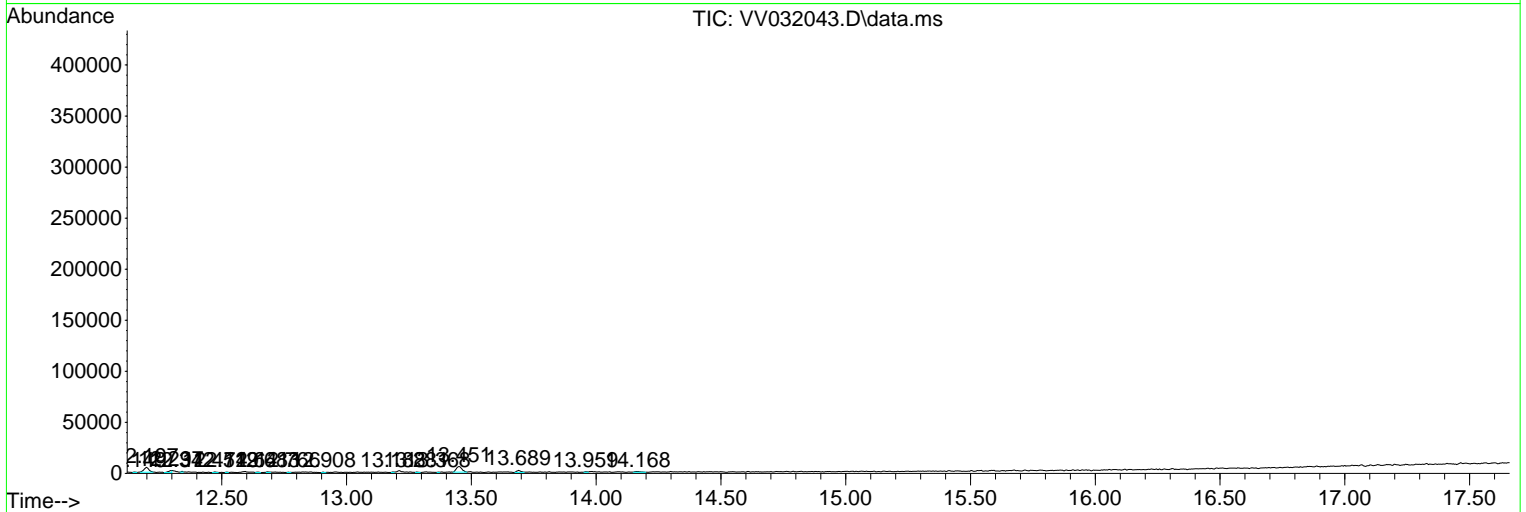
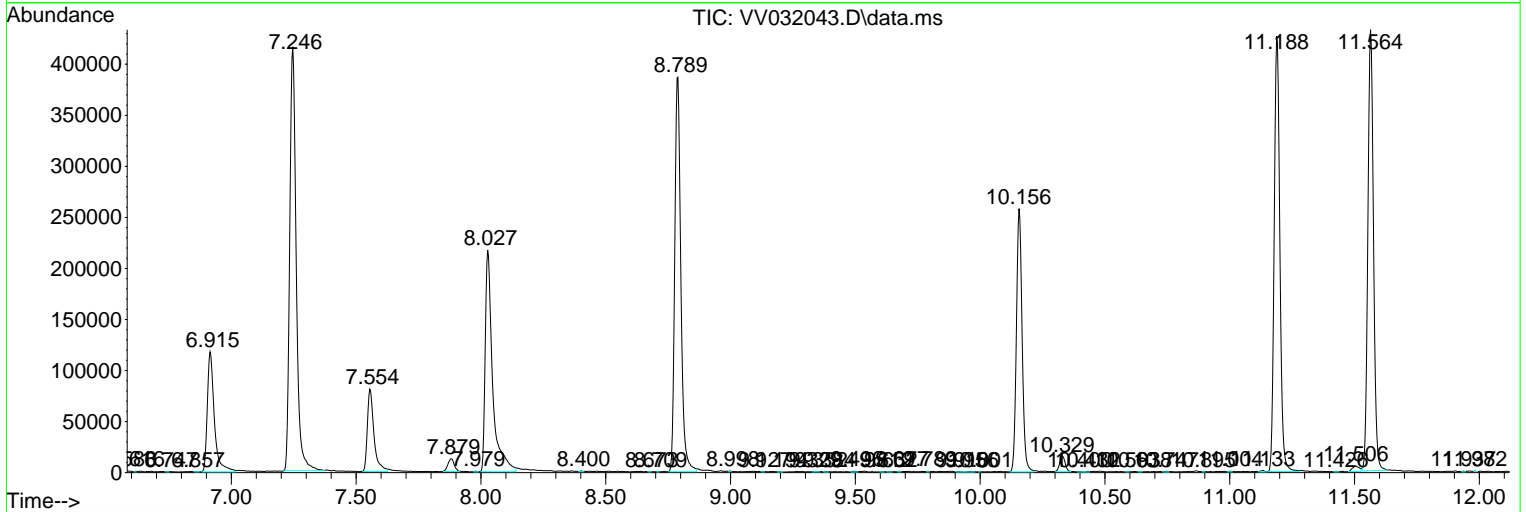
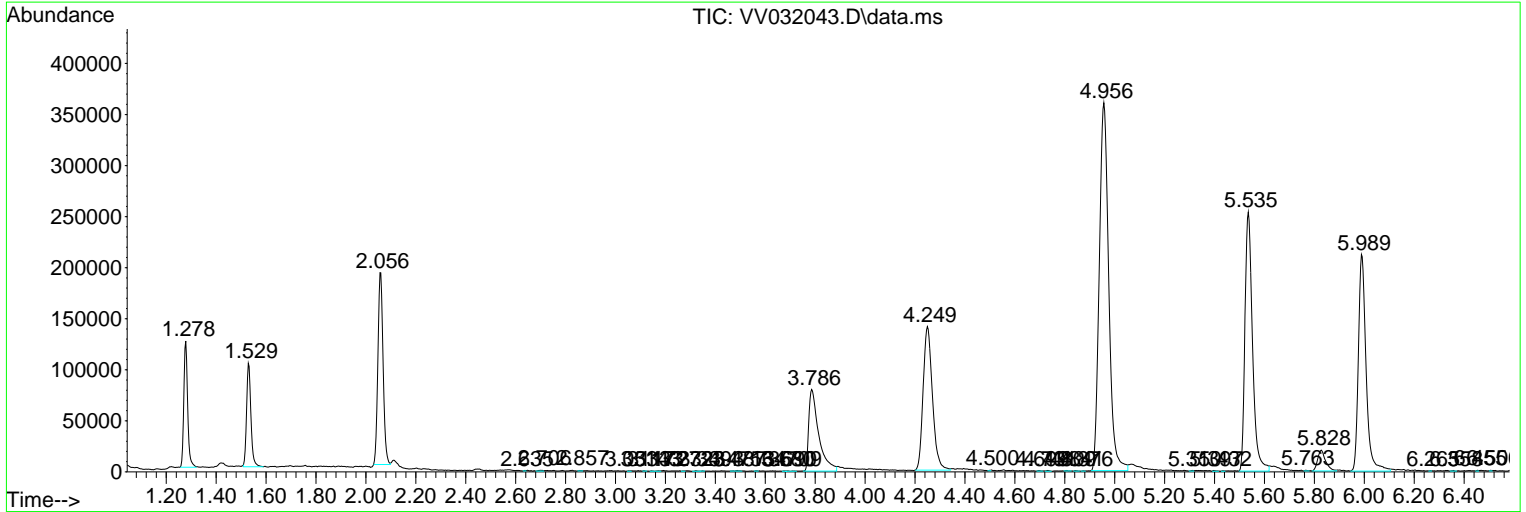
Sum of corrected areas: 7174767

Data Path : Z:\voasrv\HPCHEM1\MSVOA_V\Data\VV091223\
 Data File : VV032043.D
 Acq On : 12 Sep 2023 13:07
 Operator : SY/MD
 Sample : 04387-17
 Misc : 5.0mL/MSVOA_V/WATER
 ALS Vial : 5 Sample Multiplier: 1

Instrument :
 MSVOA_V
 ClientSampleId :
 COAL3

Quant Method : Z:\voasrv\HPCHEM1\MSVOA_V\Method\SFAMVLM082323WMA.M
 Quant Title : VOC Analysis

TIC Library : C:\Database\NIST20.L
 TIC Integration Parameters: LSCINT.P



Data Path : Z:\voasrv\HPCHEM1\MSVOA_V\Data\VV091223\
 Data File : VV032043.D
 Acq On : 12 Sep 2023 13:07
 Operator : SY/MD
 Sample : 04387-17
 Misc : 5.0mL/MSVOA_V/WATER
 ALS Vial : 5 Sample Multiplier: 1

Instrument :
 MSVOA_V
 ClientSampleId :
 COAL3

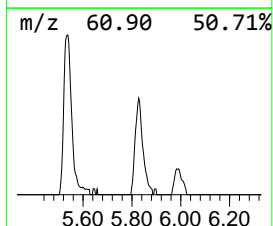
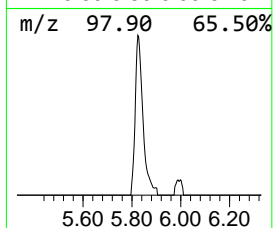
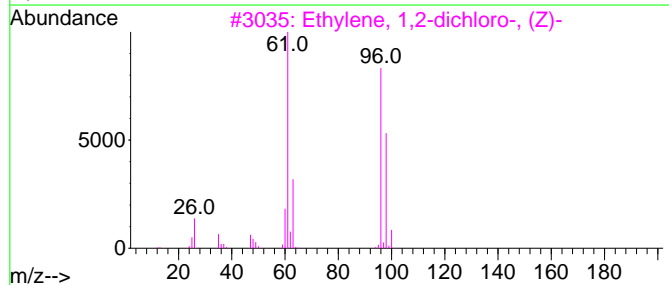
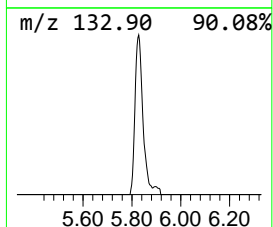
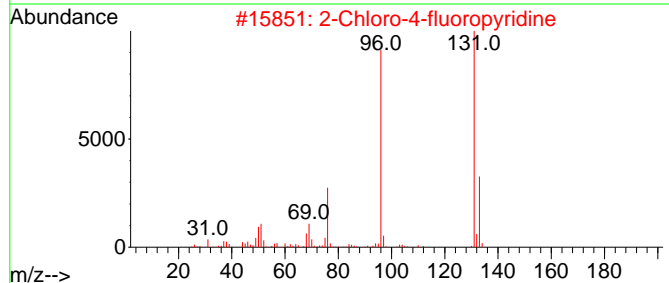
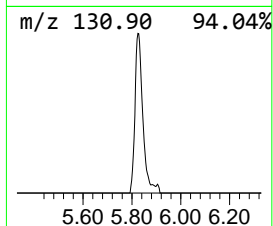
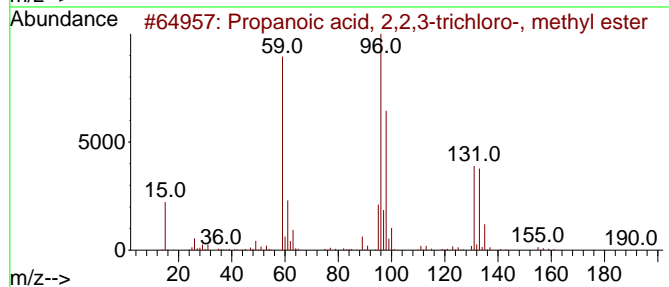
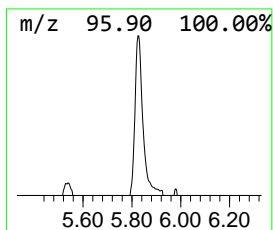
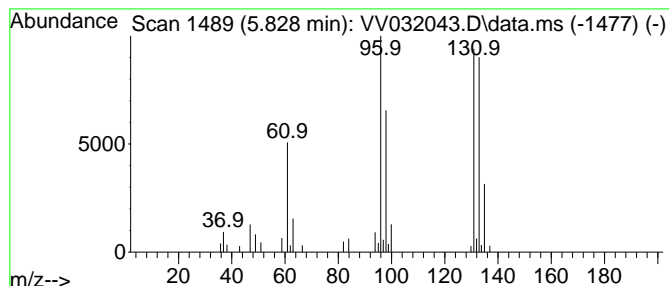
Quant Method : Z:\voasrv\HPCHEM1\MSVOA_V\Method\SFAMVLM082323WMA.M
 Quant Title : VOC Analysis

TIC Library : C:\Database\NIST20.L
 TIC Integration Parameters: LSCINT.P

 Peak Number 1 unknown-01 Concentration Rank 2

R.T.	EstConc	Area	Relative to ISTD	R.T.
5.828	4.22 ug/L	45019	1,4-Difluorobenzene	5.535

Hit#	of 5	Tentative ID	MW	MolForm	CAS#	Qual
1		Propanoic acid, 2,2,3-trichloro-...	190	C4H5Cl3O2	004749-35-3	45
2		2-Chloro-4-fluoropyridine	131	C5H3ClFN	1000484-44-8	30
3		Ethylene, 1,2-dichloro-, (Z)-	96	C2H2Cl2	000156-59-2	30
4		Ethylene, 1,2-dichloro-, (Z)-	96	C2H2Cl2	000156-59-2	30
5		Ethene, 1,1-dichloro-	96	C2H2Cl2	000075-35-4	30



Data Path : Z:\voasrv\HPCHEM1\MSVOA_V\Data\VV091223\
Data File : VV032043.D
Acq On : 12 Sep 2023 13:07
Operator : SY/MD
Sample : 04387-17
Misc : 5.0mL/MSVOA_V/WATER
ALS Vial : 5 Sample Multiplier: 1

Instrument :
MSVOA_V
ClientSampleId :
C0AL3

Quant Method : Z:\voasrv\HPCHEM1\MSVOA_V\Method\SFAMVLM082323WMA.M
Quant Title : VOC Analysis

TIC Library : C:\Database\NIST0.L
TIC Integration Parameters: LSCINT.P

TIC Top Hit name	RT	EstConc	Units	Response	--Internal Standard--			
					#	RT	Resp	Conc
-----	-----	-----	-----	-----	-----	-----	-----	-----
unknown-01	5.828	4.2	ug/L	45019	1	5.535	533356	50.0