

Data Path : Z:\voasrv\HPCHEM1\MSVOA_V\Data\VV091323\
 Data File : VV032067.D
 Acq On : 13 Sep 2023 11:34
 Operator : SY/MD
 Sample : 04332-06ME
 Misc : 3.36g/5.0mL/100uL/5.0mL/MSVOA_V/MEOH
 ALS Vial : 7 Sample Multiplier: 1

Instrument :
 MSVOA_V
 ClientSampleId :
 C0AC6ME

Integration Parameters: LSCINT.P

Integrator: RTE
 Smoothing : OFF Filtering: 5
 Sampling : 1 Min Area: 0 % of largest Peak
 Start Thrs: 0.2 Max Peaks: 100
 Stop Thrs : 0 Peak Location: TOP

If leading or trailing edge < 100 prefer < Baseline drop else tangent >
 Peak separation: 5

Method : Z:\voasrv\HPCHEM1\MSVOA_V\Method\SFAMVLM082323WMA.M
 Title : VOC Analysis

Signal : TIC: VV032067.D\data.ms

| peak # | R.T. min | first scan | max scan | last scan | PK TY | peak height | corr. area | corr. % max. | % of total |
|--------|----------|------------|----------|-----------|-------|-------------|------------|--------------|------------|
| 1 | 1.185 | 41 | 45 | 50 | rBV | 5587 | 4996 | 0.62% | 0.079% |
| 2 | 1.275 | 67 | 73 | 91 | rVB | 64070 | 97146 | 11.98% | 1.542% |
| 3 | 2.034 | 301 | 309 | 325 | rVB | 141690 | 205714 | 25.37% | 3.264% |
| 4 | 2.555 | 461 | 471 | 485 | rBV | 13950 | 28339 | 3.49% | 0.450% |
| 5 | 2.822 | 552 | 554 | 556 | rBV2 | 402 | 177 | 0.02% | 0.003% |
| 6 | 3.031 | 616 | 619 | 622 | rBV4 | 509 | 354 | 0.04% | 0.006% |
| 7 | 3.088 | 634 | 637 | 639 | rBV3 | 354 | 227 | 0.03% | 0.004% |
| 8 | 3.121 | 644 | 647 | 649 | rBV | 571 | 343 | 0.04% | 0.005% |
| 9 | 3.146 | 653 | 655 | 658 | rVB2 | 398 | 180 | 0.02% | 0.003% |
| 10 | 3.314 | 705 | 707 | 712 | rVB3 | 507 | 359 | 0.04% | 0.006% |
| 11 | 3.339 | 712 | 715 | 718 | rBV2 | 326 | 231 | 0.03% | 0.004% |
| 12 | 3.352 | 718 | 719 | 726 | rVV3 | 327 | 272 | 0.03% | 0.004% |
| 13 | 3.458 | 749 | 752 | 756 | rVB4 | 673 | 482 | 0.06% | 0.008% |
| 14 | 3.664 | 814 | 816 | 819 | rBV2 | 375 | 310 | 0.04% | 0.005% |
| 15 | 3.735 | 833 | 838 | 843 | rBV4 | 430 | 465 | 0.06% | 0.007% |
| 16 | 3.805 | 851 | 860 | 904 | rBV | 49191 | 184360 | 22.74% | 2.926% |
| 17 | 4.249 | 985 | 998 | 1023 | rVB | 103204 | 275407 | 33.96% | 4.370% |
| 18 | 4.484 | 1068 | 1071 | 1073 | rBV2 | 530 | 393 | 0.05% | 0.006% |
| 19 | 4.542 | 1087 | 1089 | 1091 | rBV | 325 | 160 | 0.02% | 0.003% |
| 20 | 4.577 | 1097 | 1100 | 1101 | rBV2 | 628 | 334 | 0.04% | 0.005% |
| 21 | 4.664 | 1124 | 1127 | 1128 | rBV | 328 | 157 | 0.02% | 0.002% |
| 22 | 4.674 | 1128 | 1130 | 1135 | rVV4 | 414 | 302 | 0.04% | 0.005% |
| 23 | 4.796 | 1166 | 1168 | 1172 | rBV2 | 288 | 194 | 0.02% | 0.003% |
| 24 | 4.834 | 1177 | 1180 | 1181 | rVV | 370 | 229 | 0.03% | 0.004% |
| 25 | 4.857 | 1185 | 1187 | 1191 | rVB | 569 | 365 | 0.05% | 0.006% |
| 26 | 4.876 | 1191 | 1193 | 1195 | rBV2 | 300 | 189 | 0.02% | 0.003% |
| 27 | 4.953 | 1202 | 1217 | 1247 | rBV2 | 294661 | 749526 | 92.43% | 11.894% |
| 28 | 5.378 | 1345 | 1349 | 1353 | rBV2 | 773 | 643 | 0.08% | 0.010% |
| 29 | 5.420 | 1358 | 1362 | 1364 | rBV2 | 515 | 374 | 0.05% | 0.006% |
| 30 | 5.535 | 1385 | 1398 | 1427 | rBV | 282667 | 612711 | 75.56% | 9.723% |
| 31 | 5.789 | 1474 | 1477 | 1478 | rBV3 | 790 | 386 | 0.05% | 0.006% |
| 32 | 5.828 | 1481 | 1489 | 1490 | rBV3 | 9909 | 11106 | 1.37% | 0.176% |
| 33 | 5.992 | 1529 | 1540 | 1568 | rVB | 159840 | 345853 | 42.65% | 5.488% |
| 34 | 6.204 | 1603 | 1606 | 1610 | rBV3 | 595 | 576 | 0.07% | 0.009% |
| 35 | 6.329 | 1641 | 1645 | 1648 | rBV2 | 528 | 411 | 0.05% | 0.007% |
| 36 | 6.387 | 1659 | 1663 | 1664 | rBV3 | 385 | 223 | 0.03% | 0.004% |

Data Path : Z:\voasrv\HPCHEM1\MSVOA_V\Data\VW091323\
 Data File : VW032067.D
 Acq On : 13 Sep 2023 11:34
 Operator : SY/MD
 Sample : 04332-06ME
 Misc : 3.36g/5.0mL/100uL/5.0mL/MSVOA_V/MEOH
 ALS Vial : 7 Sample Multiplier: 1

Instrument :
 MSVOA_V
 ClientSampleId :
 C0AC6ME

Integration Parameters: LSCINT.P

Integrator: RTE
 Smoothing : OFF
 Sampling : 1
 Start Thrs: 0.2
 Stop Thrs : 0

Filtering: 5
 Min Area: 0 % of largest Peak
 Max Peaks: 100
 Peak Location: TOP

If leading or trailing edge < 100 prefer < Baseline drop else tangent >
 Peak separation: 5

Method : Z:\voasrv\HPCHEM1\MSVOA_V\Method\SFAMVLM082323WMA.M
 Title : VOC Analysis

| | | | | | | | | | |
|----|--------|------|------|------|------|--------|--------|--------|---------|
| 37 | 6.455 | 1682 | 1684 | 1691 | rBV2 | 425 | 502 | 0.06% | 0.008% |
| 38 | 6.519 | 1701 | 1704 | 1709 | rBV3 | 369 | 426 | 0.05% | 0.007% |
| 39 | 6.555 | 1710 | 1715 | 1717 | rVV2 | 206 | 189 | 0.02% | 0.003% |
| 40 | 6.648 | 1742 | 1744 | 1748 | rVB3 | 661 | 303 | 0.04% | 0.005% |
| 41 | 6.767 | 1777 | 1781 | 1784 | rBV2 | 455 | 360 | 0.04% | 0.006% |
| 42 | 6.812 | 1793 | 1795 | 1797 | rBV | 390 | 215 | 0.03% | 0.003% |
| 43 | 6.828 | 1797 | 1800 | 1803 | rVV3 | 425 | 338 | 0.04% | 0.005% |
| 44 | 6.863 | 1809 | 1811 | 1814 | rBV2 | 245 | 176 | 0.02% | 0.003% |
| 45 | 6.918 | 1817 | 1828 | 1856 | rBV2 | 87658 | 184765 | 22.79% | 2.932% |
| 46 | 7.104 | 1883 | 1886 | 1887 | rBV2 | 450 | 207 | 0.03% | 0.003% |
| 47 | 7.146 | 1896 | 1899 | 1900 | rBV3 | 339 | 172 | 0.02% | 0.003% |
| 48 | 7.246 | 1919 | 1930 | 1952 | rBV | 323654 | 584371 | 72.07% | 9.273% |
| 49 | 7.561 | 2018 | 2028 | 2049 | rBV | 58152 | 121485 | 14.98% | 1.928% |
| 50 | 7.802 | 2101 | 2103 | 2106 | rBV | 394 | 206 | 0.03% | 0.003% |
| 51 | 7.886 | 2126 | 2129 | 2133 | rVB3 | 824 | 551 | 0.07% | 0.009% |
| 52 | 8.050 | 2168 | 2180 | 2220 | rBV | 126751 | 370358 | 45.67% | 5.877% |
| 53 | 8.619 | 2354 | 2357 | 2359 | rBV2 | 268 | 201 | 0.02% | 0.003% |
| 54 | 8.673 | 2371 | 2374 | 2375 | rBV | 358 | 200 | 0.02% | 0.003% |
| 55 | 8.789 | 2398 | 2410 | 2437 | rBV | 437113 | 772538 | 95.27% | 12.259% |
| 56 | 9.043 | 2487 | 2489 | 2493 | rVB5 | 618 | 413 | 0.05% | 0.007% |
| 57 | 9.159 | 2523 | 2525 | 2528 | rBV2 | 403 | 216 | 0.03% | 0.003% |
| 58 | 9.198 | 2536 | 2537 | 2541 | rVB2 | 713 | 269 | 0.03% | 0.004% |
| 59 | 9.223 | 2541 | 2545 | 2547 | rBV | 459 | 313 | 0.04% | 0.005% |
| 60 | 9.313 | 2570 | 2573 | 2574 | rVB | 327 | 152 | 0.02% | 0.002% |
| 61 | 9.355 | 2583 | 2586 | 2587 | rBV | 337 | 202 | 0.02% | 0.003% |
| 62 | 9.407 | 2600 | 2602 | 2604 | rBV | 324 | 159 | 0.02% | 0.003% |
| 63 | 9.564 | 2649 | 2651 | 2655 | rVV2 | 312 | 206 | 0.03% | 0.003% |
| 64 | 9.619 | 2665 | 2668 | 2673 | rBV2 | 327 | 306 | 0.04% | 0.005% |
| 65 | 9.841 | 2734 | 2737 | 2739 | rBV | 442 | 267 | 0.03% | 0.004% |
| 66 | 9.860 | 2740 | 2743 | 2745 | rBV | 345 | 253 | 0.03% | 0.004% |
| 67 | 9.995 | 2783 | 2785 | 2788 | rVB2 | 612 | 262 | 0.03% | 0.004% |
| 68 | 10.017 | 2790 | 2792 | 2794 | rBV | 387 | 183 | 0.02% | 0.003% |
| 69 | 10.162 | 2826 | 2837 | 2856 | rBV | 214989 | 357715 | 44.11% | 5.676% |
| 70 | 10.320 | 2882 | 2886 | 2888 | rBV2 | 644 | 468 | 0.06% | 0.007% |
| 71 | 10.333 | 2888 | 2890 | 2895 | rVV3 | 1065 | 877 | 0.11% | 0.014% |
| 72 | 10.365 | 2898 | 2900 | 2904 | rVB | 429 | 225 | 0.03% | 0.004% |
| 73 | 10.458 | 2927 | 2929 | 2932 | rBV3 | 421 | 209 | 0.03% | 0.003% |
| 74 | 10.612 | 2973 | 2977 | 2980 | rVB3 | 612 | 350 | 0.04% | 0.006% |
| 75 | 10.783 | 3027 | 3030 | 3036 | rBV5 | 593 | 681 | 0.08% | 0.011% |
| 76 | 10.873 | 3053 | 3058 | 3060 | rBV3 | 666 | 525 | 0.06% | 0.008% |

Data Path : Z:\voasrv\HPCHEM1\MSVOA_V\Data\VV091323\
 Data File : VV032067.D
 Acq On : 13 Sep 2023 11:34
 Operator : SY/MD
 Sample : 04332-06ME
 Misc : 3.36g/5.0mL/100uL/5.0mL/MSVOA_V/MEOH
 ALS Vial : 7 Sample Multiplier: 1

Instrument :
 MSVOA_V
 ClientSampleId :
 C0AC6ME

Integration Parameters: LSCINT.P

Integrator: RTE
 Smoothing : OFF Filtering: 5
 Sampling : 1 Min Area: 0 % of largest Peak
 Start Thrs: 0.2 Max Peaks: 100
 Stop Thrs : 0 Peak Location: TOP

If leading or trailing edge < 100 prefer < Baseline drop else tangent >
 Peak separation: 5

Method : Z:\voasrv\HPCHEM1\MSVOA_V\Method\SFAMVLM082323WMA.M
 Title : VOC Analysis

| | | | | | | | | | |
|-----|--------|------|------|------|------|--------|--------|---------|---------|
| 77 | 10.908 | 3067 | 3069 | 3072 | rBV2 | 433 | 265 | 0.03% | 0.004% |
| 78 | 10.982 | 3088 | 3092 | 3094 | rBV3 | 402 | 289 | 0.04% | 0.005% |
| 79 | 11.021 | 3101 | 3104 | 3106 | rBV | 288 | 201 | 0.02% | 0.003% |
| 80 | 11.140 | 3139 | 3141 | 3146 | rVB2 | 883 | 538 | 0.07% | 0.009% |
| 81 | 11.191 | 3146 | 3157 | 3178 | rBV | 509195 | 810874 | 100.00% | 12.868% |
| 82 | 11.448 | 3235 | 3237 | 3241 | rBV2 | 577 | 284 | 0.04% | 0.005% |
| 83 | 11.503 | 3251 | 3254 | 3256 | rBV2 | 458 | 237 | 0.03% | 0.004% |
| 84 | 11.567 | 3263 | 3274 | 3297 | rBV | 357400 | 559061 | 68.95% | 8.872% |
| 85 | 11.857 | 3362 | 3364 | 3367 | rBV2 | 360 | 207 | 0.03% | 0.003% |
| 86 | 11.898 | 3375 | 3377 | 3380 | rVB2 | 421 | 217 | 0.03% | 0.003% |
| 87 | 12.091 | 3435 | 3437 | 3439 | rBV2 | 491 | 199 | 0.02% | 0.003% |
| 88 | 12.143 | 3446 | 3453 | 3456 | rBV3 | 456 | 454 | 0.06% | 0.007% |
| 89 | 12.529 | 3570 | 3573 | 3574 | rBV | 346 | 188 | 0.02% | 0.003% |
| 90 | 12.705 | 3626 | 3628 | 3630 | rBV2 | 418 | 228 | 0.03% | 0.004% |
| 91 | 12.734 | 3635 | 3637 | 3640 | rVB | 421 | 240 | 0.03% | 0.004% |
| 92 | 12.824 | 3662 | 3665 | 3667 | rBV2 | 479 | 348 | 0.04% | 0.006% |
| 93 | 12.982 | 3709 | 3714 | 3716 | rBV2 | 485 | 420 | 0.05% | 0.007% |
| 94 | 13.207 | 3781 | 3784 | 3786 | rBV2 | 737 | 467 | 0.06% | 0.007% |
| 95 | 13.281 | 3805 | 3807 | 3813 | rVB2 | 618 | 462 | 0.06% | 0.007% |
| 96 | 13.365 | 3831 | 3833 | 3835 | rVB2 | 484 | 197 | 0.02% | 0.003% |
| 97 | 13.622 | 3911 | 3913 | 3915 | rBV | 413 | 219 | 0.03% | 0.003% |
| 98 | 13.712 | 3939 | 3941 | 3942 | rBV | 476 | 175 | 0.02% | 0.003% |
| 99 | 13.805 | 3967 | 3970 | 3972 | rBV2 | 466 | 338 | 0.04% | 0.005% |
| 100 | 13.879 | 3991 | 3993 | 3997 | rBV3 | 482 | 280 | 0.03% | 0.004% |

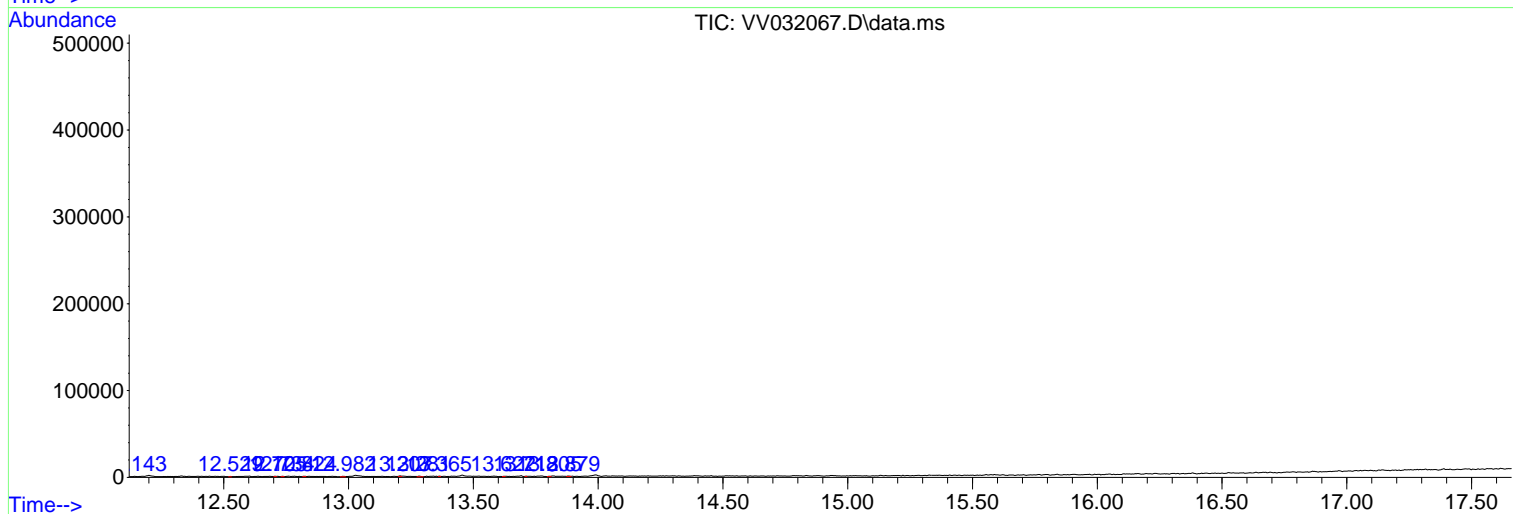
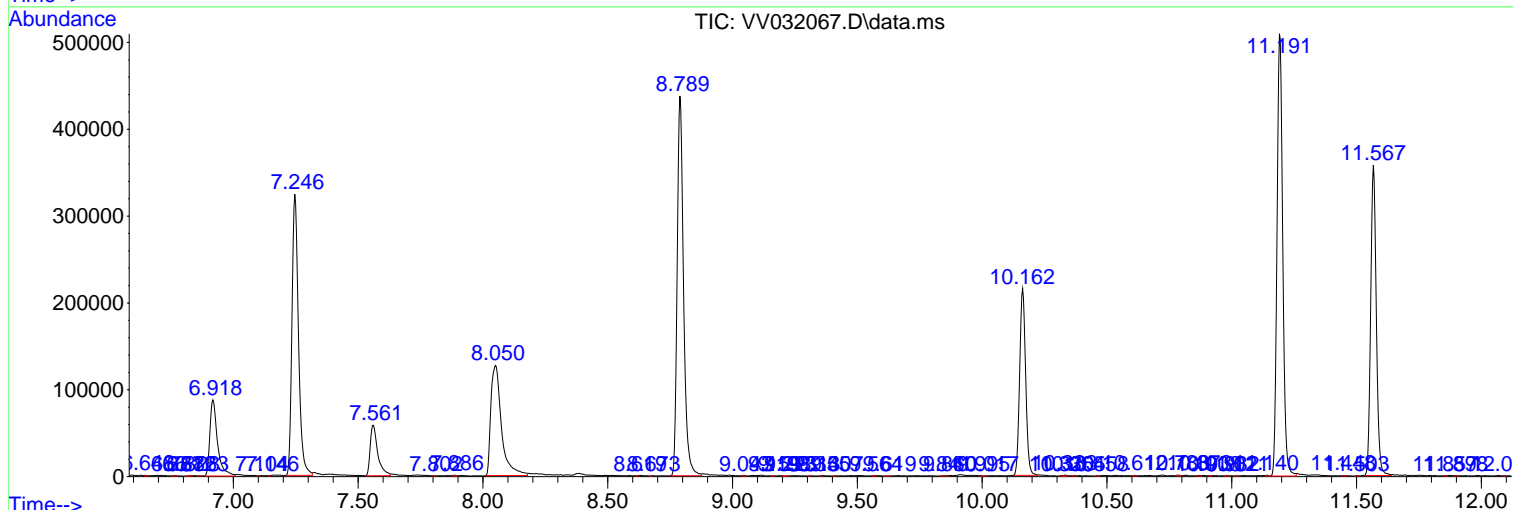
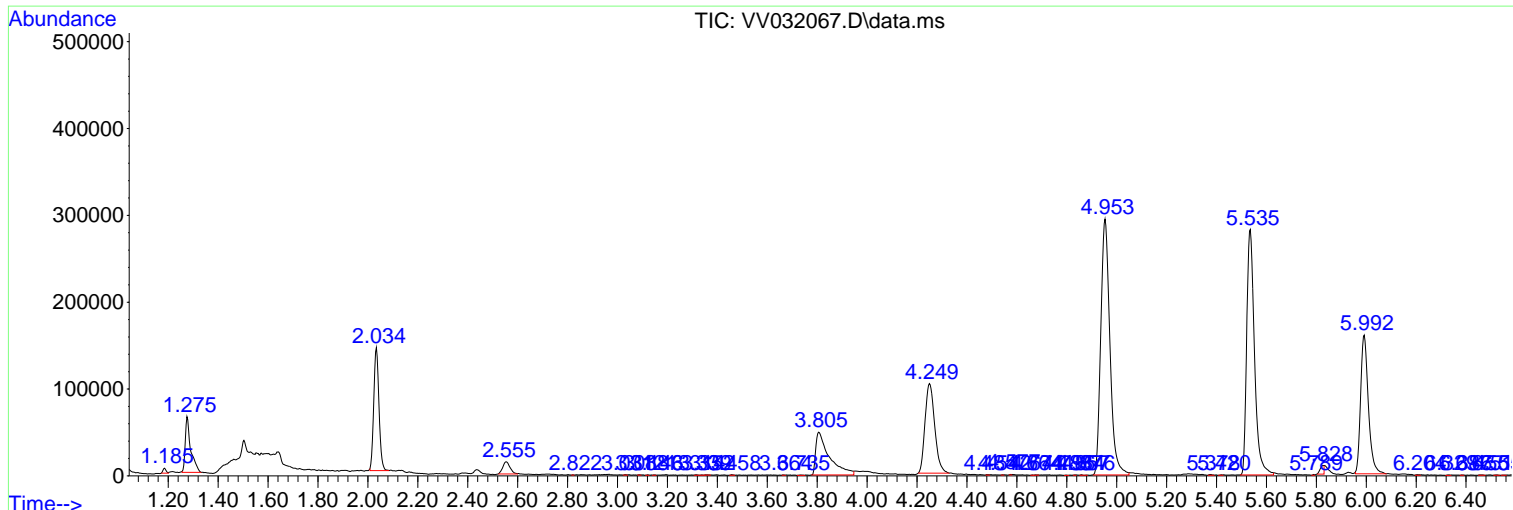
Sum of corrected areas: 6301696

Data Path : Z:\voasrv\HPCHEM1\MSVOA_V\Data\VV091323\
 Data File : VV032067.D
 Acq On : 13 Sep 2023 11:34
 Operator : SY/MD
 Sample : 04332-06ME
 Misc : 3.36g/5.0mL/100uL/5.0mL/MSVOA_V/MEOH
 ALS Vial : 7 Sample Multiplier: 1

Instrument :
 MSVOA_V
ClientSampleId :
 C0AC6ME

Quant Method : Z:\voasrv\HPCHEM1\MSVOA_V\Method\SFAMVLM082323WMA.M
 Quant Title : VOC Analysis

TIC Library : C:\Database\NIST20.L
 TIC Integration Parameters: LSCINT.P



Library Search Compound Report

Data Path : Z:\voasrv\HPCHEM1\MSVOA_V\Data\VV091323\
Data File : VV032067.D
Acq On : 13 Sep 2023 11:34
Operator : SY/MD
Sample : 04332-06ME
Misc : 3.36g/5.0mL/100uL/5.0mL/MSVOA_V/MEOH
ALS Vial : 7 Sample Multiplier: 1

Instrument :
MSVOA_V
ClientSampleId :
C0AC6ME

Quant Method : Z:\voasrv\HPCHEM1\MSVOA_V\Method\SFAMVLM082323WMA.M
Quant Title : VOC Analysis

TIC Library : C:\Database\NIST20.L
TIC Integration Parameters: LSCINT.P

No Library Search Compounds Detected

Data Path : Z:\voasrv\HPCHEM1\MSVOA_V\Data\VV091323\
Data File : VV032067.D
Acq On : 13 Sep 2023 11:34
Operator : SY/MD
Sample : 04332-06ME
Misc : 3.36g/5.0mL/100uL/5.0mL/MSVOA_V/MEOH
ALS Vial : 7 Sample Multiplier: 1

Instrument :
MSVOA_V
ClientSampleId :
C0AC6ME

Quant Method : Z:\voasrv\HPCHEM1\MSVOA_V\Method\SFAMVLM082323WMA.M
Quant Title : VOC Analysis

TIC Library : C:\Database\NIST0.L
TIC Integration Parameters: LSCINT.P

| TIC Top Hit name | RT | EstConc | Units | Response | --Internal Standard-- | | | |
|------------------|----|---------|-------|----------|-----------------------|----|------|------|
| | | | | | # | RT | Resp | Conc |
