

Data Path : Z:\voasrv\HPCHEM1\MSVOA_V\Data\VV091522\
 Data File : VV027864.D
 Acq On : 15 Sep 2022 19:05
 Operator : SY/MD
 Sample : N4652-10
 Misc : 25.0mL/MSVOA_V/WATER
 ALS Vial : 22 Sample Multiplier: 1

Instrument :
 MSVOA_V
 ClientSampleId :
 EXZ32MS

Integration Parameters: rteint.p

Integrator: RTE
 Smoothing : ON Filtering: 5
 Sampling : 1 Min Area: 3 % of largest Peak
 Start Thrs: 0.1 Max Peaks: 100
 Stop Thrs : 0 Peak Location: TOP

If leading or trailing edge < 100 prefer < Baseline drop else tangent >
 Peak separation: 5

Method : Z:\voasrv\HPCHEM1\MSVOA_V\Method\SFAMVTR090622WMA.M
 Title : TRACE VOA SFAM1.0

Signal : TIC: VV027864.D\data.ms

peak #	R.T. min	first scan	max scan	last scan	PK TY	peak height	corr. area	corr. % max.	% of total
1	1.310	74	84	113	rBV	1732555	2094486	22.57%	8.080%
2	1.584	156	169	199	rBV	715277	933093	10.05%	3.600%
3	2.111	321	333	348	rBV3	140629	238363	2.57%	0.920%
4	2.760	523	535	559	rBV	83502	151600	1.63%	0.585%
5	3.185	649	667	713	rBV	4434829	9281158	100.00%	35.806%
6	3.905	874	891	936	rBV	3445325	8241589	88.80%	31.796%
7	4.346	1013	1028	1053	rBV	76375	191309	2.06%	0.738%
8	4.603	1089	1108	1142	rBV	538825	1353659	14.59%	5.222%
9	5.043	1229	1245	1266	rBV2	158639	420682	4.53%	1.623%
10	5.616	1412	1423	1451	rBV	134850	280215	3.02%	1.081%
11	5.911	1504	1515	1541	rBV3	58118	122943	1.32%	0.474%
12	6.066	1552	1563	1576	rBV	87050	185786	2.00%	0.717%
13	7.313	1941	1951	1968	rBV	169035	290868	3.13%	1.122%
14	8.088	2182	2192	2223	rBV	159205	342239	3.69%	1.320%
15	8.850	2418	2429	2445	rBV	213453	349875	3.77%	1.350%
16	9.931	2754	2765	2781	rBV2	60029	95308	1.03%	0.368%
17	10.214	2842	2853	2872	rBV	65848	112547	1.21%	0.434%
18	10.738	3001	3016	3035	rVB	92391	150410	1.62%	0.580%
19	11.085	3118	3124	3138	rVB	65849	104498	1.13%	0.403%
20	11.249	3164	3175	3194	rBV	235373	377035	4.06%	1.455%
21	11.538	3249	3265	3281	rBV3	72474	170787	1.84%	0.659%
22	11.625	3281	3292	3315	rVB4	206965	432029	4.65%	1.667%

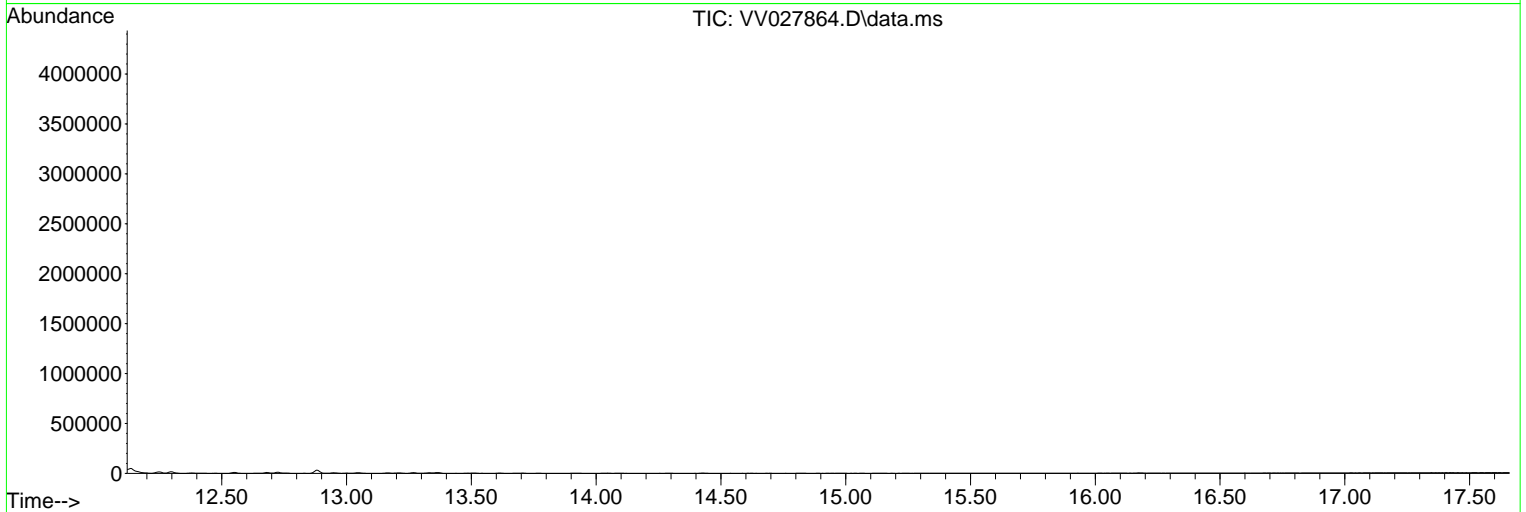
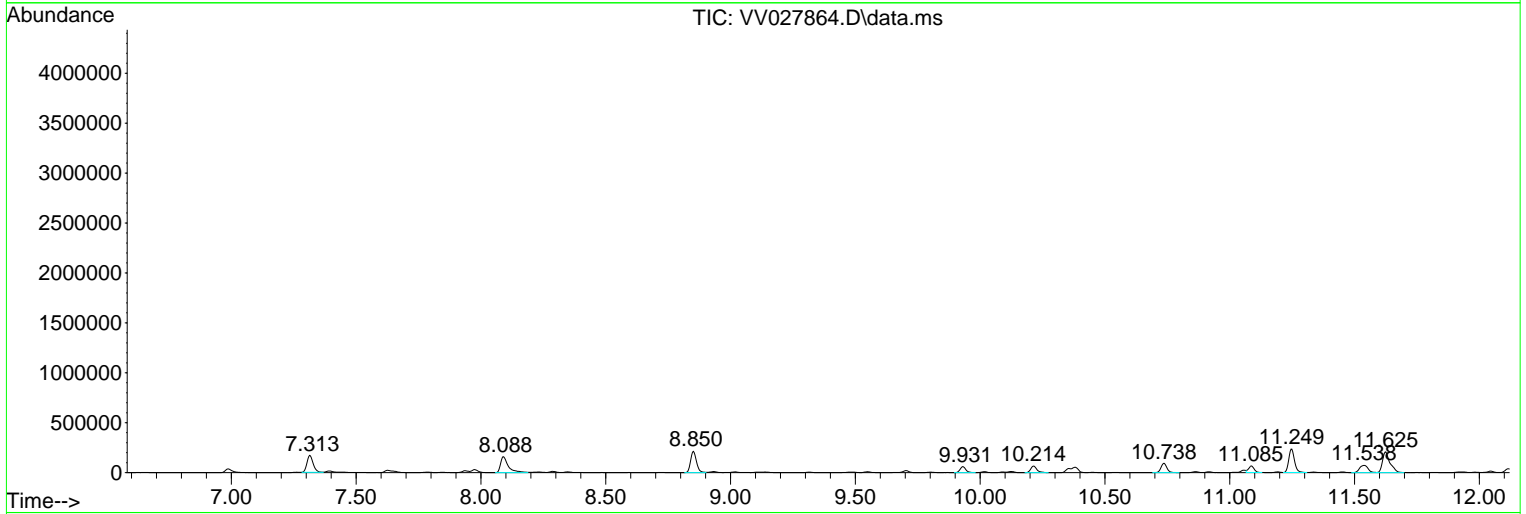
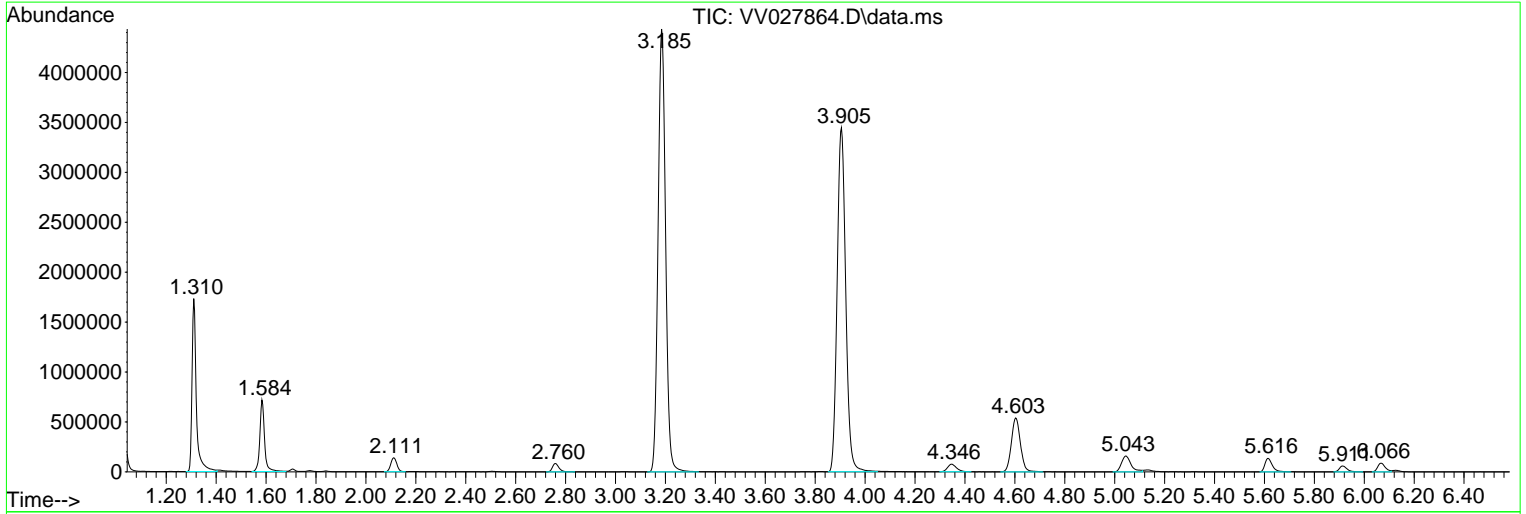
Sum of corrected areas: 25920479

Data Path : Z:\voasrv\HPCHEM1\MSVOA_V\Data\VV091522\
 Data File : VV027864.D
 Acq On : 15 Sep 2022 19:05
 Operator : SY/MD
 Sample : N4652-10
 Misc : 25.0mL/MSVOA_V/WATER
 ALS Vial : 22 Sample Multiplier: 1

Instrument :
 MSVOA_V
 ClientSampleId :
 EXZ32MS

Quant Method : Z:\voasrv\HPCHEM1\MSVOA_V\Method\SFAMVTR090622WMA.M
 Quant Title : TRACE VOA SFAM1.0

TIC Library : C:\Database\NIST20.L
 TIC Integration Parameters: LSCINT.P



Data Path : Z:\voasrv\HPCHEM1\MSVOA_V\Data\VV091522\
 Data File : VV027864.D
 Acq On : 15 Sep 2022 19:05
 Operator : SY/MD
 Sample : N4652-10
 Misc : 25.0mL/MSVOA_V/WATER
 ALS Vial : 22 Sample Multiplier: 1

Instrument :
 MSVOA_V
 ClientSampleId :
 EXZ32MS

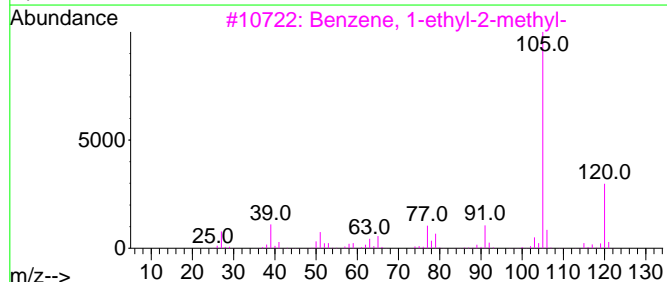
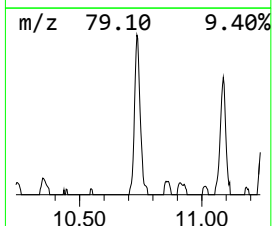
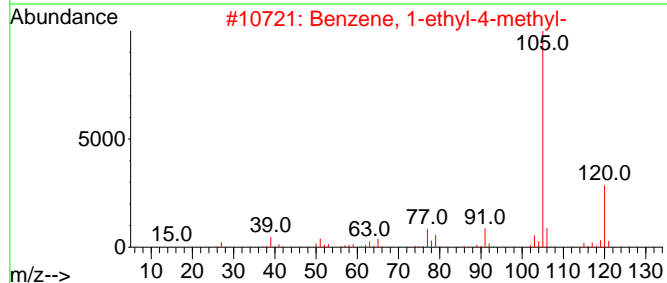
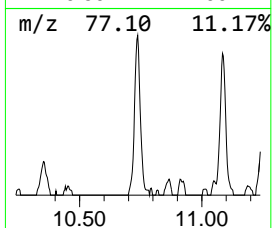
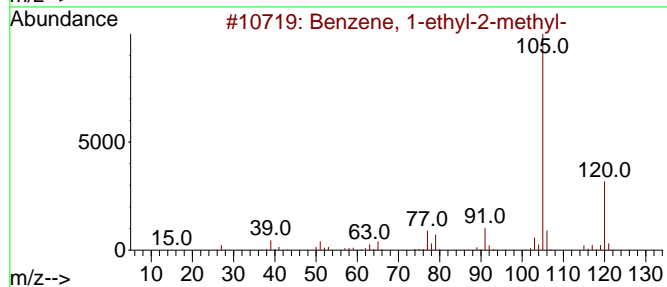
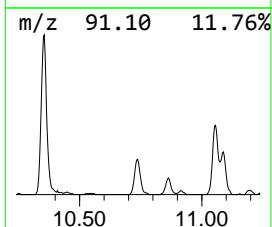
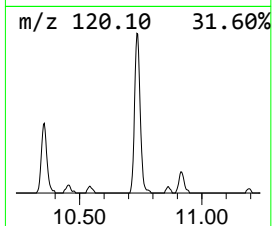
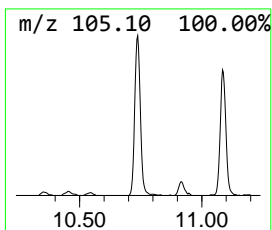
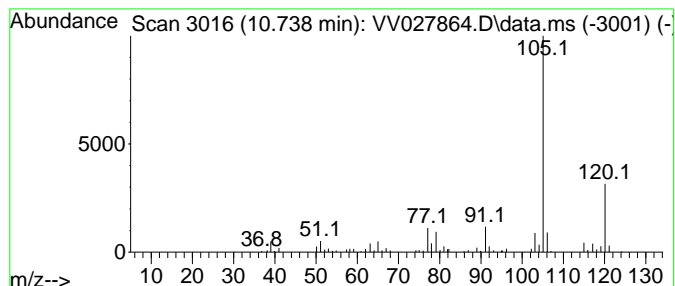
Quant Method : Z:\voasrv\HPCHEM1\MSVOA_V\Method\SFAMVTR090622WMA.M
 Quant Title : TRACE VOA SFAM1.0

TIC Library : C:\Database\NIST20.L
 TIC Integration Parameters: LSCINT.P

 Peak Number 1 Benzene, 1-ethyl-2-methyl- Concentration Rank 2

R.T.	EstConc	Area	Relative to ISTD	R.T.
10.738	1.99 ug/L	150410	1,4-Dichlorobenzene-d4	11.249

Hit#	of	5	Tentative ID	MW	MolForm	CAS#	Qual
1			Benzene, 1-ethyl-2-methyl-	120	C9H12	000611-14-3	95
2			Benzene, 1-ethyl-4-methyl-	120	C9H12	000622-96-8	94
3			Benzene, 1-ethyl-2-methyl-	120	C9H12	000611-14-3	94
4			Benzene, 1-ethyl-4-methyl-	120	C9H12	000622-96-8	94
5			Benzene, 1,2,3-trimethyl-	120	C9H12	000526-73-8	91



Data Path : Z:\voasrv\HPCHEM1\MSVOA_V\Data\VV091522\
 Data File : VV027864.D
 Acq On : 15 Sep 2022 19:05
 Operator : SY/MD
 Sample : N4652-10
 Misc : 25.0mL/MSVOA_V/WATER
 ALS Vial : 22 Sample Multiplier: 1

Instrument :
 MSVOA_V
 ClientSampleId :
 EXZ32MS

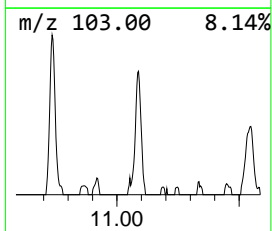
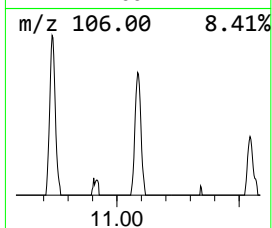
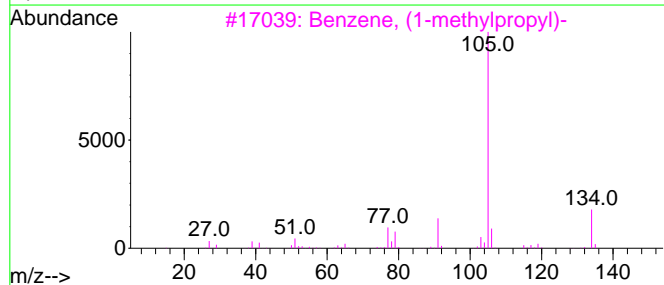
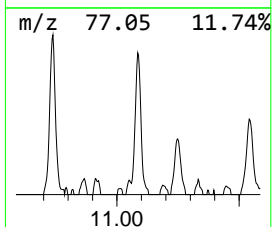
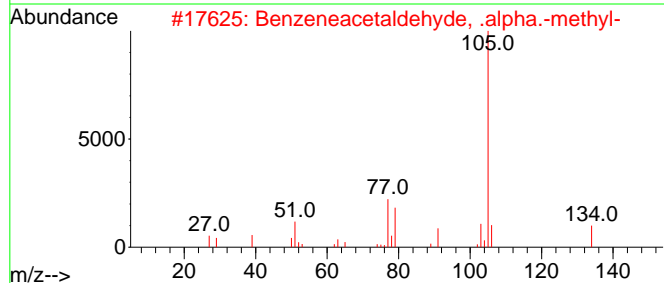
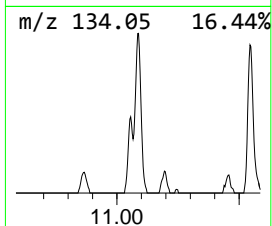
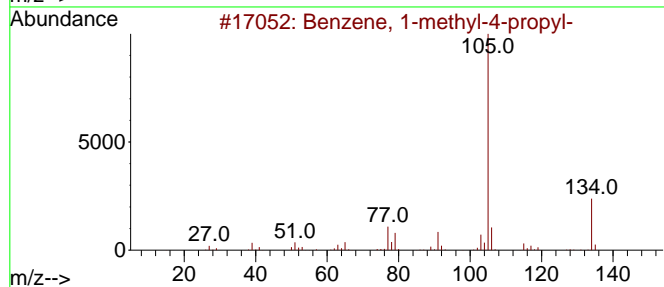
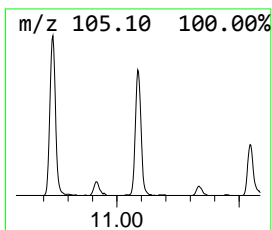
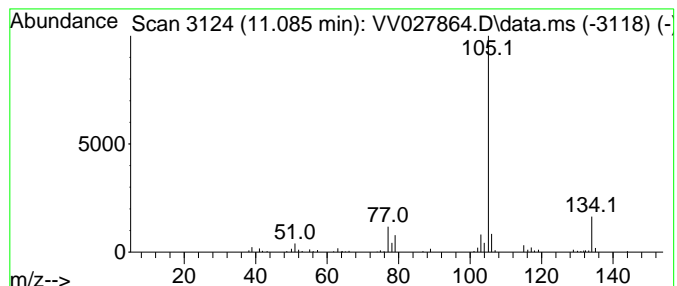
Quant Method : Z:\voasrv\HPCHEM1\MSVOA_V\Method\SFAMVTR090622WMA.M
 Quant Title : TRACE VOA SFAM1.0

TIC Library : C:\Database\NIST20.L
 TIC Integration Parameters: LSCINT.P

 Peak Number 2 Benzene, 1-methyl-4-propyl- Concentration Rank 3

R.T.	EstConc	Area	Relative to ISTD	R.T.
11.085	1.39 ug/L	104498	1,4-Dichlorobenzene-d4	11.249

Hit#	of 5	Tentative ID	MW	MolForm	CAS#	Qual
1		Benzene, 1-methyl-4-propyl-	134	C10H14	001074-55-1	90
2		Benzeneacetaldehyde, .alpha.-met...	134	C9H10O	000093-53-8	83
3		Benzene, (1-methylpropyl)-	134	C10H14	000135-98-8	83
4		Benzene, 1-methyl-4-propyl-	134	C10H14	001074-55-1	83
5		Benzene, (1-methylpropyl)-	134	C10H14	000135-98-8	80



Data Path : Z:\voasrv\HPCHEM1\MSVOA_V\Data\VV091522\
 Data File : VV027864.D
 Acq On : 15 Sep 2022 19:05
 Operator : SY/MD
 Sample : N4652-10
 Misc : 25.0mL/MSVOA_V/WATER
 ALS Vial : 22 Sample Multiplier: 1

Instrument :
 MSVOA_V
 ClientSampleId :
 EXZ32MS

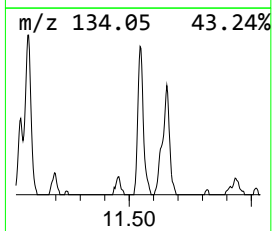
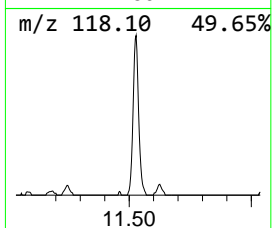
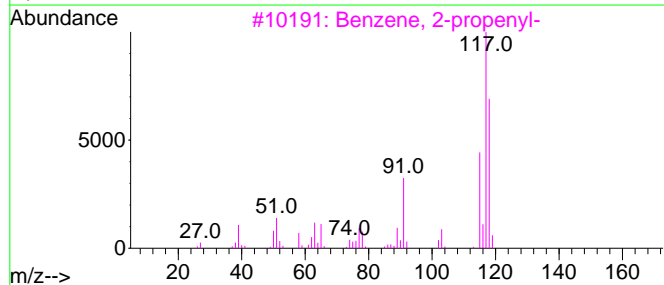
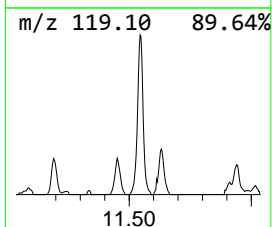
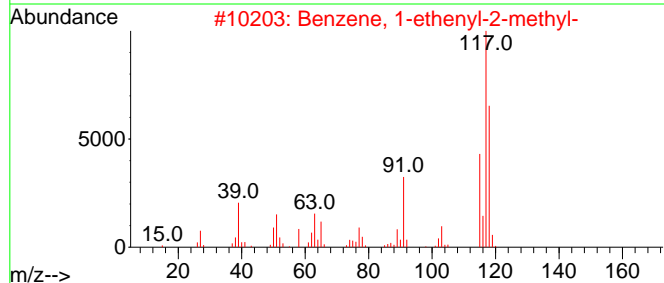
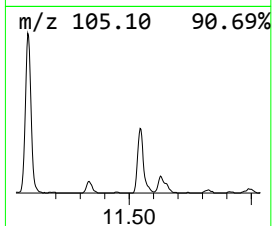
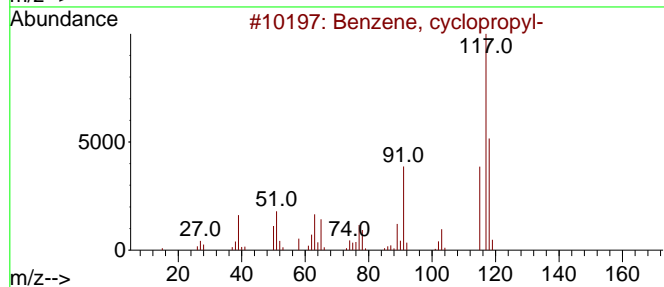
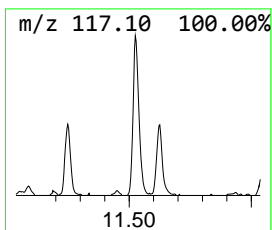
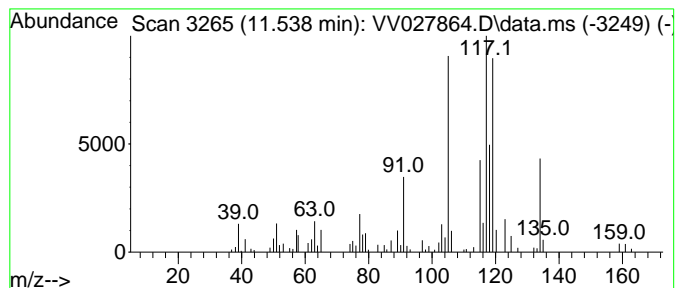
Quant Method : Z:\voasrv\HPCHEM1\MSVOA_V\Method\SFAMVTR090622WMA.M
 Quant Title : TRACE VOA SFAM1.0

TIC Library : C:\Database\NIST20.L
 TIC Integration Parameters: LSCINT.P

 Peak Number 3 Benzene, cyclopropyl- Concentration Rank 1

R.T.	EstConc	Area	Relative to ISTD	R.T.
11.538	2.26 ug/L	170787	1,4-Dichlorobenzene-d4	11.249

Hit#	of	5	Tentative ID	MW	MolForm	CAS#	Qual
1			Benzene, cyclopropyl-	118	C9H10	000873-49-4	92
2			Benzene, 1-ethenyl-2-methyl-	118	C9H10	000611-15-4	86
3			Benzene, 2-propenyl-	118	C9H10	000300-57-2	83
4			Indane	118	C9H10	000496-11-7	50
5			Benzene, 1,2-diethyl-	134	C10H14	000135-01-3	50



Data Path : Z:\voasrv\HPCHEM1\MSVOA_V\Data\VV091522\
Data File : VV027864.D
Acq On : 15 Sep 2022 19:05
Operator : SY/MD
Sample : N4652-10
Misc : 25.0mL/MSVOA_V/WATER
ALS Vial : 22 Sample Multiplier: 1

Instrument :
MSVOA_V
ClientSampleId :
EXZ32MS

Quant Method : Z:\voasrv\HPCHEM1\MSVOA_V\Method\SFAMVTR090622WMA.M
Quant Title : TRACE VOA SFAM1.0

TIC Library : C:\Database\NIST20.L
TIC Integration Parameters: LSCINT.P

TIC Top Hit name	RT	EstConc	Units	Response	--Internal Standard--			
					#	RT	Resp	Conc
Benzene, 1-ethy...	10.738	2.0	ug/L	150410	3	11.249	377035	5.0
Benzene, 1-meth...	11.085	1.4	ug/L	104498	3	11.249	377035	5.0
Benzene, cyclop...	11.538	2.3	ug/L	170787	3	11.249	377035	5.0