

Data Path : Z:\VOASRV\HPCHEM1\MSVOA V\DATA\VV091620\  
 Data File : VV018258.D  
 Acq On : 17 Sep 2020 00:27  
 Operator : SY/MD  
 Sample : L4042-12  
 Misc : 5.0mL/MSVOA V/WATER  
 ALS Vial : 37 Sample Multiplier: 1

Instrument :  
 MSVOA\_V  
 ClientSampleId :  
 C0AC3

Quant Time: Sep 17 06:11:56 2020  
 Quant Method : Z:\VOASRV\HPCHEM1\MSVOA\_V\METHOD\SOMVLM090920WMA.M  
 Quant Title : VOC Analysis  
 QLast Update : Thu Sep 17 05:33:55 2020  
 Response via : Initial Calibration

Internal Standards	R.T.	QIon	Response	Conc	Units	Dev(Min)
1) 1,4-Difluorobenzene	5.64	114	285816	50.00	ug/L	0.00
28) Chlorobenzene-d5	8.87	117	283252	50.00	ug/L	0.00
60) 1,4-Dichlorobenzene-d4	11.27	152	136463	50.00	ug/L	0.00

## System Monitoring Compounds

4) Vinyl Chloride-d3	1.32	65	92178	39.57	ug/L	0.00
Spiked Amount	50.000	Range	60 - 135	Recovery	=	79.14%
7) Chloroethane-d5	1.58	69	77152	40.48	ug/L	0.00
Spiked Amount	50.000	Range	70 - 130	Recovery	=	80.96%
11) 1,1-Dichloroethene-d2	2.12	63	137348	32.15	ug/L	0.00
Spiked Amount	50.000	Range	60 - 125	Recovery	=	64.30%
21) 2-Butanone-d5	3.92	46	117226	82.22	ug/L	0.00
Spiked Amount	100.000	Range	40 - 130	Recovery	=	82.22%
24) Chloroform-d	4.38	84	165865	41.04	ug/L	0.00
Spiked Amount	50.000	Range	70 - 125	Recovery	=	82.08%
26) 1,2-Dichloroethane-d4	5.06	65	110148	42.52	ug/L	0.00
Spiked Amount	50.000	Range	70 - 125	Recovery	=	85.04%
32) Benzene-d6	5.08	84	330761	40.79	ug/L	0.00
Spiked Amount	50.000	Range	70 - 125	Recovery	=	81.58%
36) 1,2-Dichloropropane-d6	6.09	67	107150	41.59	ug/L	0.00
Spiked Amount	50.000	Range	70 - 120	Recovery	=	83.18%
41) Toluene-d8	7.34	98	297163	40.21	ug/L	0.00
Spiked Amount	50.000	Range	80 - 120	Recovery	=	80.42%
43) trans-1,3-Dichloropropene-	7.64	79	49825	38.06	ug/L	0.00
Spiked Amount	50.000	Range	60 - 125	Recovery	=	76.12%
47) 2-Hexanone-d5	8.11	63	85079	87.18	ug/L	0.00
Spiked Amount	100.000	Range	45 - 130	Recovery	=	87.18%
57) 1,1,2,2-Tetrachloroethane-	10.24	84	139759	43.22	ug/L	0.00
Spiked Amount	50.000	Range	65 - 120	Recovery	=	86.44%
64) 1,2-Dichlorobenzene-d4	11.65	152	125659	44.84	ug/L	0.00
Spiked Amount	50.000	Range	80 - 120	Recovery	=	89.68%

## Target Compounds

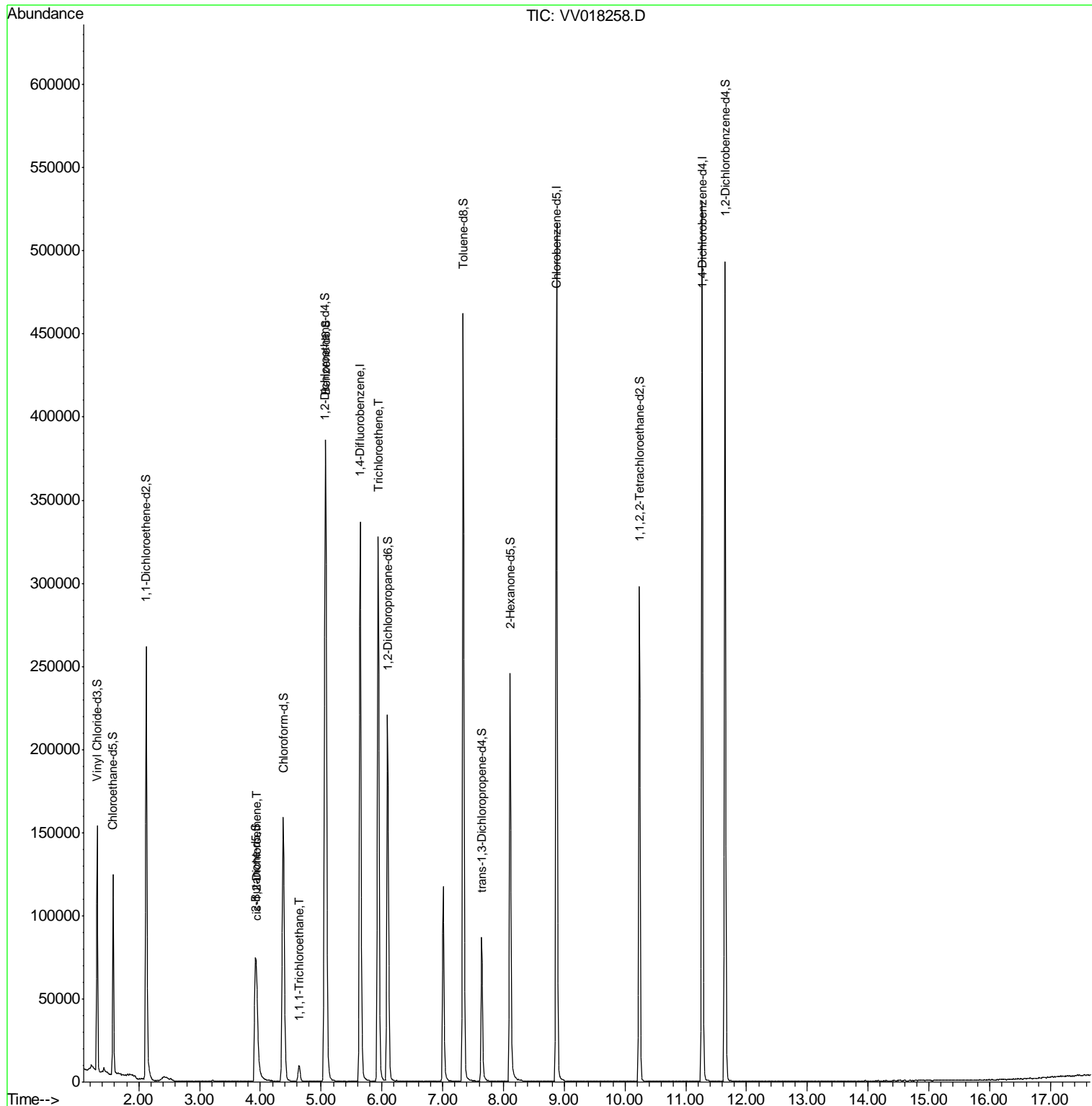
Target Compounds	R.T.	QIon	Response	Conc	Units	Ovalue
20) cis-1,2-Dichloroethene	3.94	96	10362	5.012	ug/L	99
30) 1,1,1-Trichloroethane	4.64	97	8138	2.476	ug/L	98
34) Trichloroethene	5.94	95	114660	51.973	ug/L	99

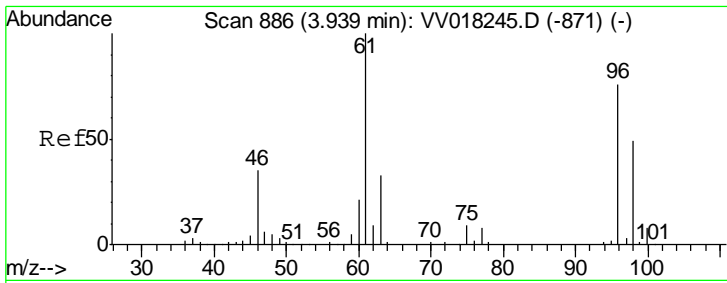
(#) = qualifier out of range (m) = manual integration (+) = signals summed

Data Path : Z:\VOASRV\HPCHEM1\MSVOA V\DATA\VV091620\  
 Data File : VV018258.D  
 Acq On : 17 Sep 2020 00:27  
 Operator : SY/MD  
 Sample : L4042-12  
 Misc : 5.0mL/MSVOA V/WATER  
 ALS Vial : 37 Sample Multiplier: 1

Instrument :  
 MSVOA\_V  
 ClientSampled :  
 C0AC3

Quant Time: Sep 17 06:11:56 2020  
 Quant Method : Z:\VOASRV\HPCHEM1\MSVOA\_V\METHOD\SOMVLM090920WMA.M  
 Quant Title : VOC Analysis  
 QLast Update : Thu Sep 17 05:33:55 2020  
 Response via : Initial Calibration

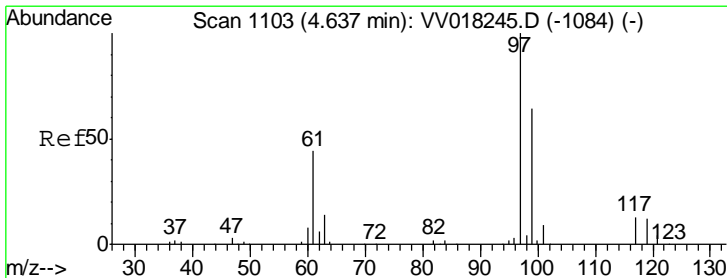
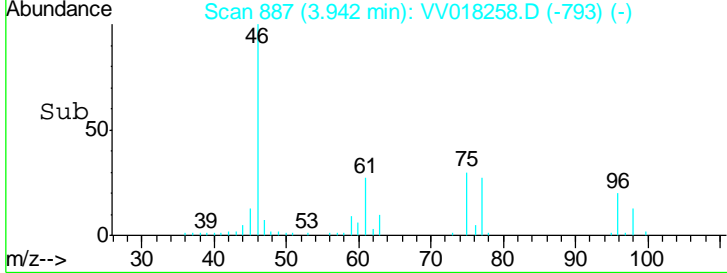
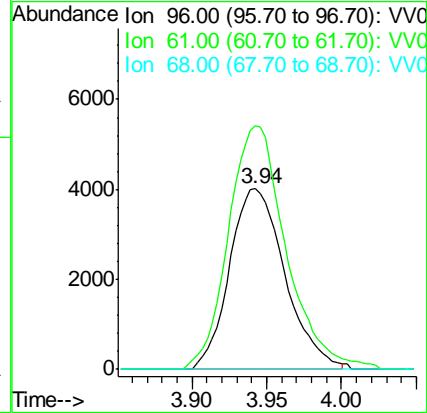
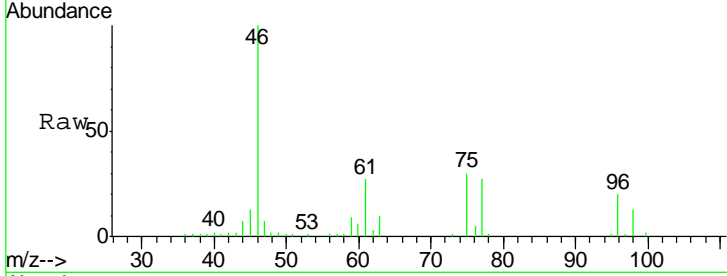




#20  
 cis-1,2-Dichloroethene  
 Concen: 5.012 ug/L  
 RT: 3.94 min Scan# 887  
 Delta R.T. 0.00 min  
 Lab File: VV018258.D  
 Acq: 17 Sep 2020 00:27

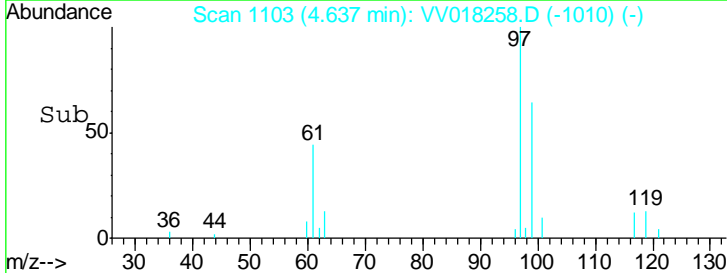
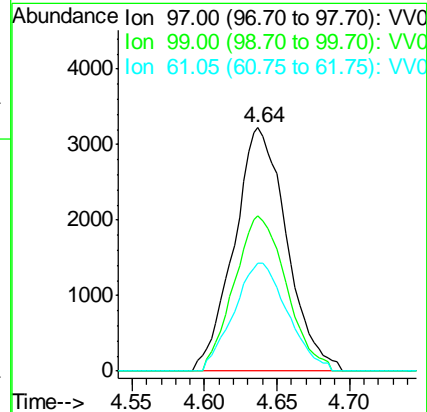
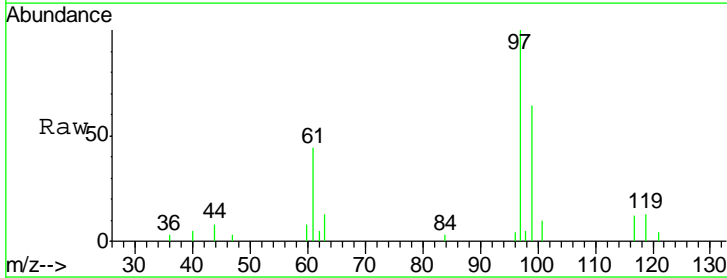
**Instrument :**  
 MSVOA\_V  
**ClientSampled :**  
 C0AC3

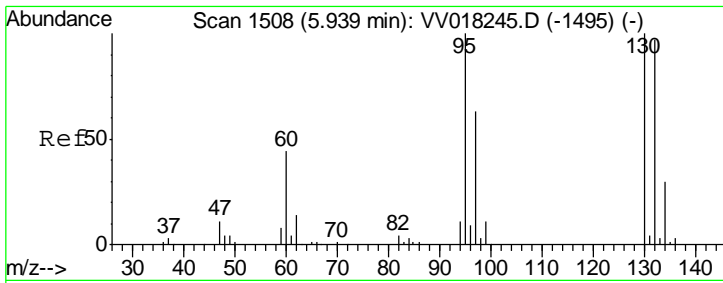
Tgt Ion	Resp	Lower	Upper
96	10362		
61	134.7	93.6	173.8
68	0.0	0.0	0.0



#30  
 1,1,1-Trichloroethane  
 Concen: 2.476 ug/L  
 RT: 4.64 min Scan# 1103  
 Delta R.T. -0.00 min  
 Lab File: VV018258.D  
 Acq: 17 Sep 2020 00:27

Tgt Ion	Resp	Lower	Upper
97	8138		
99	63.0	51.6	77.4
61	45.2	34.9	52.3



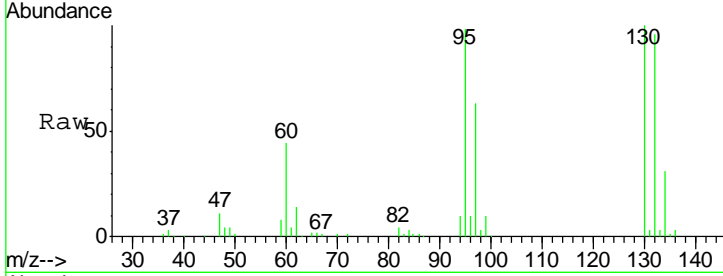


#34  
 Trichloroethene  
 Concen: 51.973 ug/L  
 RT: 5.94 min Scan# 1508  
 Delta R.T. -0.00 min  
 Lab File: VV018258.D  
 Acq: 17 Sep 2020 00:27

**Instrument :**  
 MSVOA\_V  
**ClientSampled :**  
 C0AC3

Tot Ion: 95 Resp: 114660

Ion	Ratio	Lower	Upper
95	100		
97	64.9	46.3	85.9
132	98.0	68.1	126.5
130	102.3	71.5	132.9



Abundance Ion 95.00 (94.70 to 95.70): VV018258.D (-1415) (-)  
 Ion 97.00 (96.70 to 97.70): VV018258.D (-1415) (-)  
 Ion 132.00 (131.70 to 132.70): VV018258.D (-1415) (-)  
 Ion 130.00 (129.70 to 130.70): VV018258.D (-1415) (-)

