

Data Path : Z:\voasrv\HPCHEM1\MSVOA_V\Data\VW091621\
 Data File : VW022158.D
 Acq On : 16 Sep 2021 15:44
 Operator : SY/MD
 Sample : M3764-07
 Misc : 5.0mL/MSVOA_V/WATER
 ALS Vial : 10 Sample Multiplier: 1

Instrument :
 MSVOA_V
 ClientSampled :
 C0C93

Quant Time: Sep 17 01:56:26 2021
 Quant Method : Z:\voasrv\HPCHEM1\MSVOA_V\Method\SFAMVLM082721WMA.M
 Quant Title : VOC Analysis
 QLast Update : Fri Sep 17 01:54:12 2021
 Response via : Initial Calibration

Compound	R.T.	QIon	Response	Conc	Units	Dev(Min)

Internal Standards						
1) 1,4-Difluorobenzene	5.619	114	305652	50.000	ug/L	0.00
28) Chlorobenzene-d5	8.854	117	289069	50.000	ug/L	0.00
58) 1,4-Dichlorobenzene-d4	11.252	152	129284	50.000	ug/L	0.00
System Monitoring Compounds						
4) Vinyl Chloride-d3	1.304	65	89607	42.334	ug/L	0.00
Spiked Amount	50.000	Range 60 - 135	Recovery =	84.660%		
7) Chloroethane-d5	1.565	69	77583	46.935	ug/L	0.00
Spiked Amount	50.000	Range 70 - 130	Recovery =	93.880%		
11) 1,1-Dichloroethene-d2	2.105	63	140761	40.210	ug/L	0.00
Spiked Amount	50.000	Range 60 - 125	Recovery =	80.420%		
21) 2-Butanone-d5	3.896	46	163038	112.312	ug/L	0.02
Spiked Amount	100.000	Range 40 - 130	Recovery =	112.310%		
24) Chloroform-d	4.352	84	191384	49.587	ug/L	0.00
Spiked Amount	50.000	Range 70 - 125	Recovery =	99.180%		
26) 1,2-Dichloroethane-d4	5.034	65	118331	52.051	ug/L	0.00
Spiked Amount	50.000	Range 70 - 125	Recovery =	104.100%		
32) Benzene-d6	5.050	84	393094	50.136	ug/L	0.00
Spiked Amount	50.000	Range 70 - 125	Recovery =	100.280%		
36) 1,2-Dichloropropane-d6	6.072	67	124759	50.597	ug/L	0.00
Spiked Amount	50.000	Range 70 - 120	Recovery =	101.200%		
41) Toluene-d8	7.317	98	347224	46.914	ug/L	0.00
Spiked Amount	50.000	Range 80 - 120	Recovery =	93.820%		
43) trans-1,3-Dichloroprop...	7.625	79	52171	44.454	ug/L	0.00
Spiked Amount	50.000	Range 60 - 125	Recovery =	88.900%		
47) 2-Hexanone-d5	8.092	63	99682	105.361	ug/L	0.00
Spiked Amount	100.000	Range 45 - 130	Recovery =	105.360%		
56) 1,1,2,2-Tetrachloroeth...	10.217	84	159500	50.508	ug/L	0.00
Spiked Amount	50.000	Range 65 - 120	Recovery =	101.020%		
66) 1,2-Dichlorobenzene-d4	11.625	152	131661	51.803	ug/L	0.00
Spiked Amount	50.000	Range 80 - 120	Recovery =	103.600%		

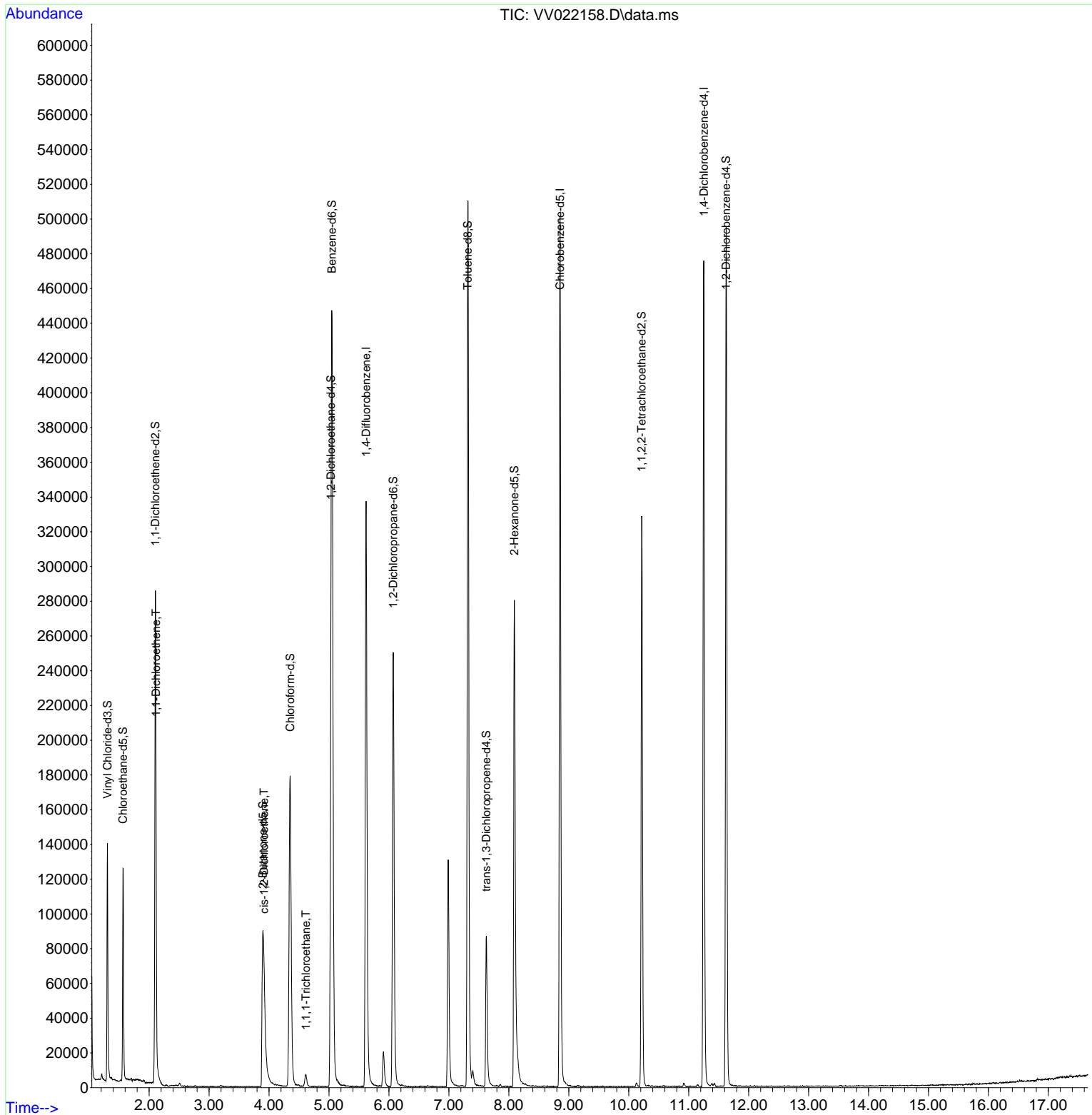
Target Compounds						Qvalue
12) 1,1-Dichloroethene	2.114	96	11903	6.751	ug/L #	1
20) cis-1,2-Dichloroethene	3.915	96	8654	3.647	ug/L	93
30) 1,1,1-Trichloroethane	4.616	97	5512	1.604	ug/L	99

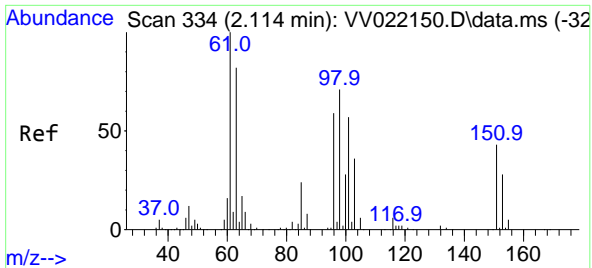
(#) = qualifier out of range (m) = manual integration (+) = signals summed

Data Path : Z:\voasrv\HPCHEM1\MSVOA_V\Data\VV091621\
 Data File : VV022158.D
 Acq On : 16 Sep 2021 15:44
 Operator : SY/MD
 Sample : M3764-07
 Misc : 5.0mL/MSVOA_V/WATER
 ALS Vial : 10 Sample Multiplier: 1

Instrument :
 MSVOA_V
 ClientSampled :
 C0C93

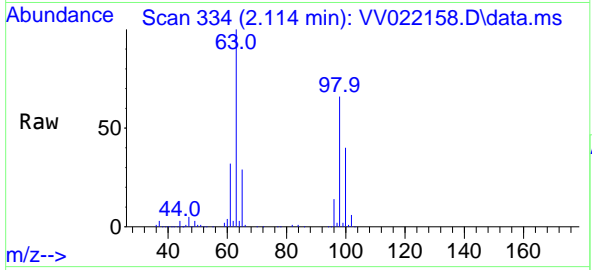
Quant Time: Sep 17 01:56:26 2021
 Quant Method : Z:\voasrv\HPCHEM1\MSVOA_V\Method\SFAMVLM082721WMA.M
 Quant Title : VOC Analysis
 QLast Update : Fri Sep 17 01:54:12 2021
 Response via : Initial Calibration





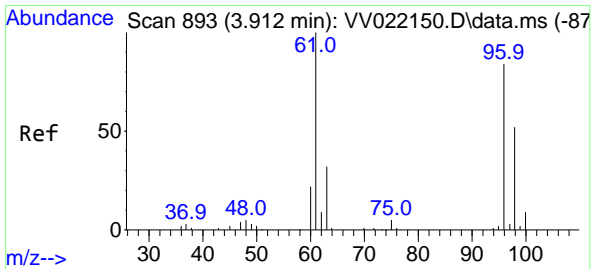
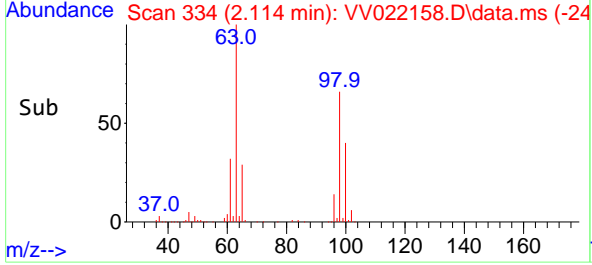
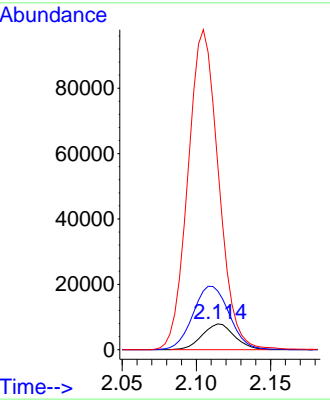
#12
 1,1-Dichloroethene
 Concen: 6.751 ug/L
 RT: 2.114 min Scan# 334
 Delta R.T. -0.000 min
 Lab File: VV022158.D
 Acq: 16 Sep 2021 15:44

Instrument : MSVOA_V
 ClientSampled : C0C93

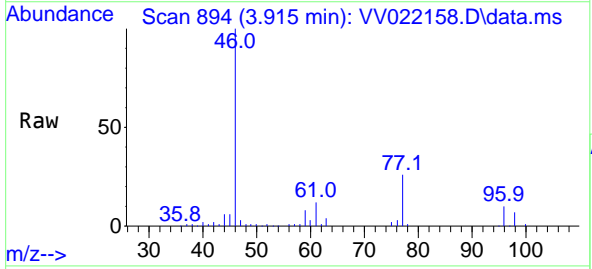


Tgt Ion: 96 Resp: 11903

Ion	Ratio	Lower	Upper
96	100		
61	228.0	113.2	210.2#
63	720.2	102.3	189.9#

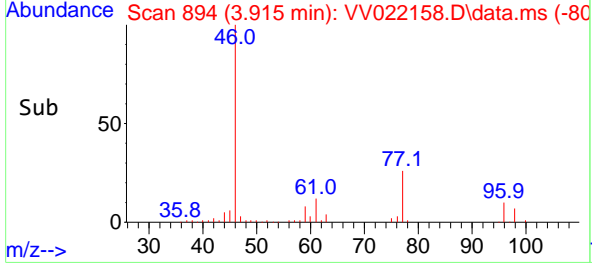
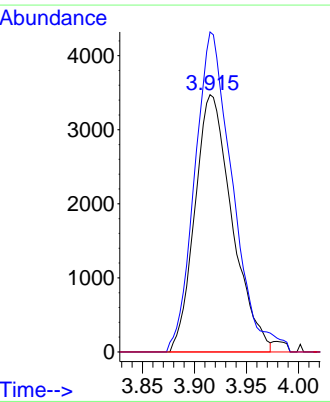


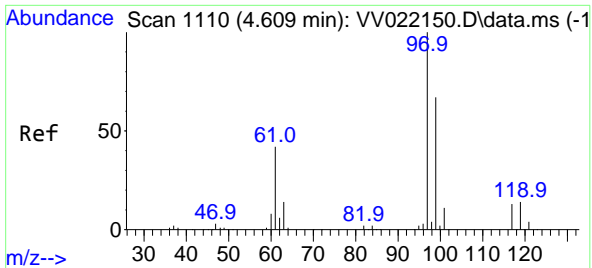
#20
 cis-1,2-Dichloroethene
 Concen: 3.647 ug/L
 RT: 3.915 min Scan# 894
 Delta R.T. 0.003 min
 Lab File: VV022158.D
 Acq: 16 Sep 2021 15:44



Tgt Ion: 96 Resp: 8654

Ion	Ratio	Lower	Upper
96	100		
61	124.4	81.8	152.0
68	0.0	0.0	0.0





#30
 1,1,1-Trichloroethane
 Concen: 1.604 ug/L
 RT: 4.616 min Scan# 1112
 Delta R.T. 0.006 min
 Lab File: VV022158.D
 Acq: 16 Sep 2021 15:44

Instrument :
 MSVOA_V
 ClientSampled :
 C0C93

Tgt Ion: 97 Resp: 5512

Ion	Ratio	Lower	Upper
97	100		
99	64.9	52.0	78.0
61	41.7	31.8	47.8

