

Data Path : Z:\VOASRV\HPCHEM1\MSVOA V\DATA\VV091720\
 Data File : VV018283.D
 Acq On : 17 Sep 2020 16:51
 Operator : SY/MD
 Sample : L4066-06
 Misc : 5.0mL/MSVOA V/WATER
 ALS Vial : 17 Sample Multiplier: 1

Instrument :
 MSVOA_V
 ClientSampleId :
 BFWS7

Quant Time: Sep 18 06:20:06 2020
 Quant Method : Z:\VOASRV\HPCHEM1\MSVOA_V\METHOD\SOMVLM090920WMA.M
 Quant Title : VOC Analysis
 QLast Update : Fri Sep 18 06:17:41 2020
 Response via : Initial Calibration

Internal Standards	R.T.	QIon	Response	Conc	Units	Dev(Min)
1) 1,4-Difluorobenzene	5.64	114	284765	50.00	ug/L	0.00
28) Chlorobenzene-d5	8.87	117	280654	50.00	ug/L	0.00
60) 1,4-Dichlorobenzene-d4	11.27	152	135990	50.00	ug/L	0.00

System Monitoring Compounds

4) Vinyl Chloride-d3	1.32	65	88930	38.32	ug/L	0.00
Spiked Amount	50.000	Range	60 - 135	Recovery	=	76.64%
7) Chloroethane-d5	1.58	69	76347	40.20	ug/L	0.00
Spiked Amount	50.000	Range	70 - 130	Recovery	=	80.40%
11) 1,1-Dichloroethene-d2	2.12	63	132874	31.21	ug/L	0.00
Spiked Amount	50.000	Range	60 - 125	Recovery	=	62.42%
21) 2-Butanone-d5	3.92	46	121384	85.45	ug/L	0.00
Spiked Amount	100.000	Range	40 - 130	Recovery	=	85.45%
24) Chloroform-d	4.38	84	169053	41.99	ug/L	0.00
Spiked Amount	50.000	Range	70 - 125	Recovery	=	83.98%
26) 1,2-Dichloroethane-d4	5.06	65	113779	44.08	ug/L	0.00
Spiked Amount	50.000	Range	70 - 125	Recovery	=	88.16%
32) Benzene-d6	5.08	84	336372	41.87	ug/L	0.00
Spiked Amount	50.000	Range	70 - 125	Recovery	=	83.74%
36) 1,2-Dichloropropane-d6	6.09	67	109278	42.81	ug/L	0.00
Spiked Amount	50.000	Range	70 - 120	Recovery	=	85.62%
41) Toluene-d8	7.34	98	299674	40.93	ug/L	0.00
Spiked Amount	50.000	Range	80 - 120	Recovery	=	81.86%
43) trans-1,3-Dichloropropene-	7.64	79	53376	41.15	ug/L	0.00
Spiked Amount	50.000	Range	60 - 125	Recovery	=	82.30%
47) 2-Hexanone-d5	8.11	63	86724	89.68	ug/L	0.00
Spiked Amount	100.000	Range	45 - 130	Recovery	=	89.68%
57) 1,1,2,2-Tetrachloroethane-	10.24	84	145848	45.52	ug/L	0.00
Spiked Amount	50.000	Range	65 - 120	Recovery	=	91.04%
64) 1,2-Dichlorobenzene-d4	11.65	152	128335	45.95	ug/L	0.00
Spiked Amount	50.000	Range	80 - 120	Recovery	=	91.90%

Target Compounds

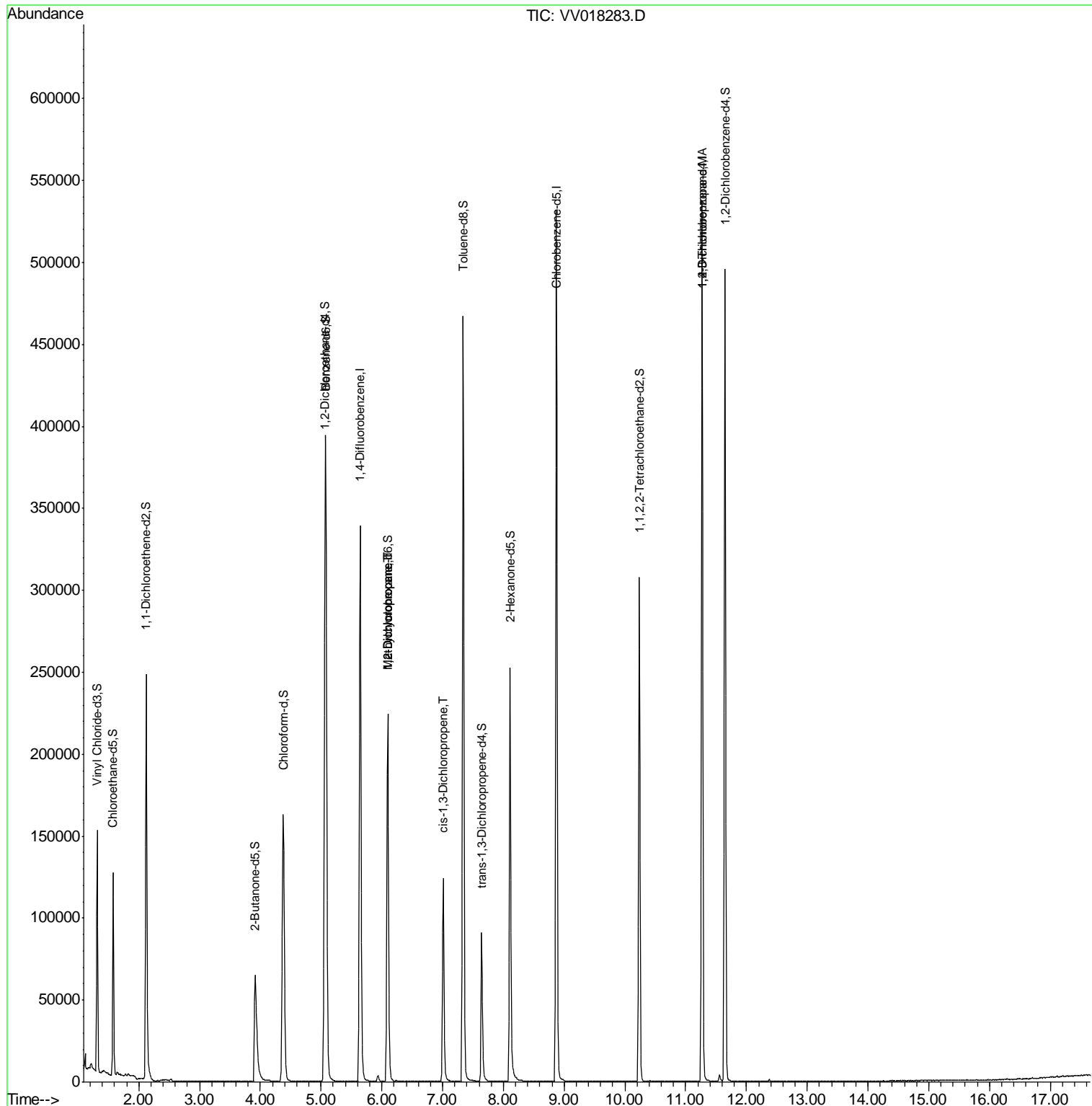
					Ovalue
35) Methylcyclohexane	6.10	83	26291	7.988 ug/L #	17
37) 1,2-Dichloropropane	6.09	63	11728	5.516 ug/L #	87
39) cis-1,3-Dichloropropene	7.01	75	2916	0.890 ug/L #	64
59) 1,2,3-Trichloropropane	11.27	75	15840	6.334 ug/L	94

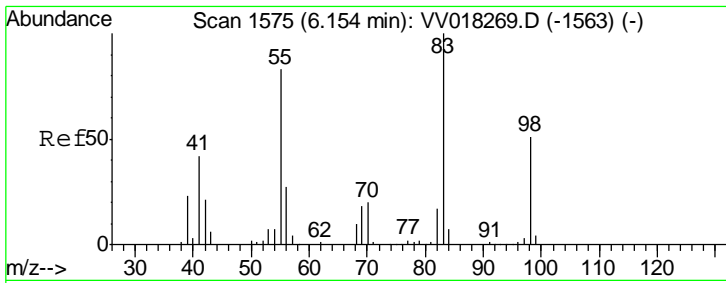
(#) = qualifier out of range (m) = manual integration (+) = signals summed

Data Path : Z:\VOASRV\HPCHEM1\MSVOA V\DATA\VV091720\
 Data File : VV018283.D
 Acq On : 17 Sep 2020 16:51
 Operator : SY/MD
 Sample : L4066-06
 Misc : 5.0mL/MSVOA V/WATER
 ALS Vial : 17 Sample Multiplier: 1

Instrument :
 MSVOA_V
 ClientSampled :
 BFWS7

Quant Time: Sep 18 06:20:06 2020
 Quant Method : Z:\VOASRV\HPCHEM1\MSVOA_V\METHOD\SOMVLM090920WMA.M
 Quant Title : VOC Analysis
 QLast Update : Fri Sep 18 06:17:41 2020
 Response via : Initial Calibration

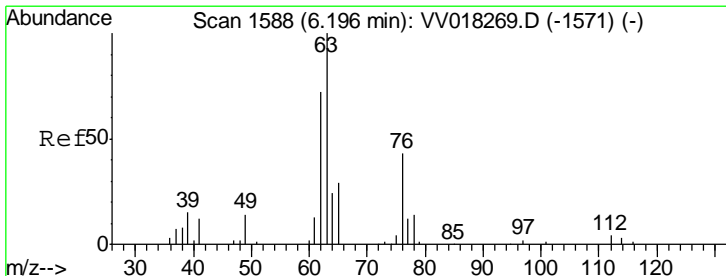
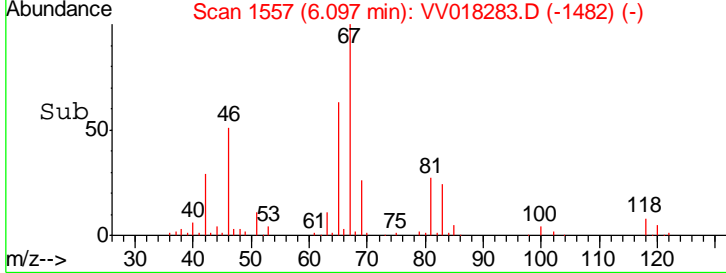
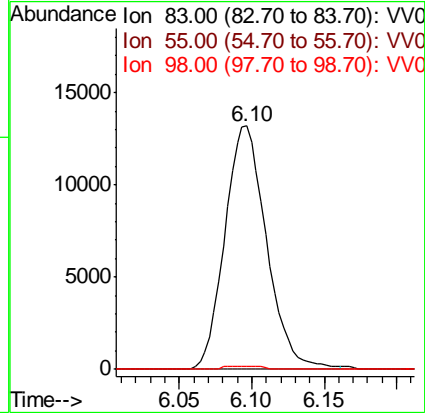
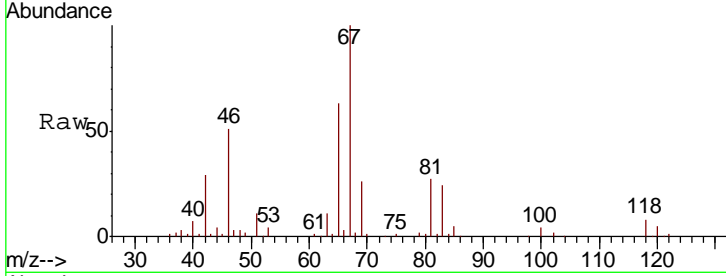




#35
 Methylcyclohexane
 Concen: 7.988 ug/L
 RT: 6.10 min Scan# 1557
 Delta R.T. -0.06 min
 Lab File: VV018283.D
 Acq: 17 Sep 2020 16:51

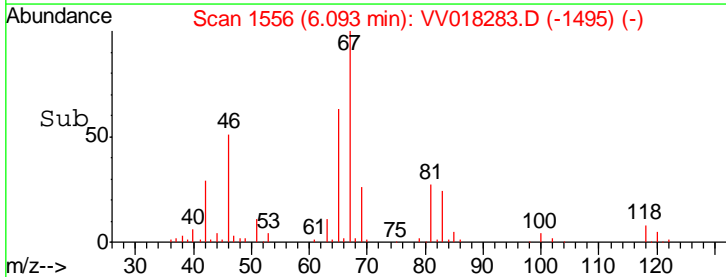
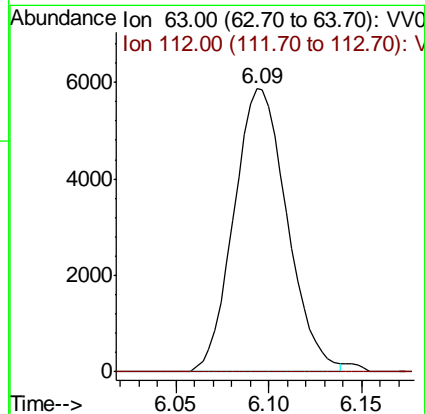
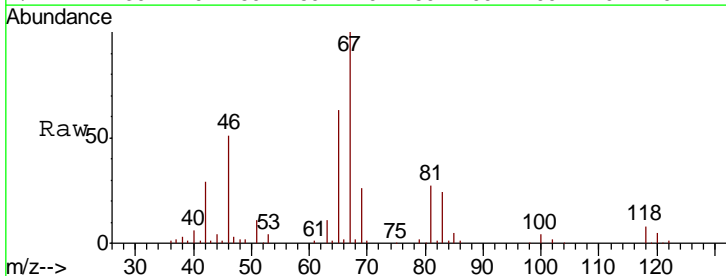
Instrument :
 MSVOA_V
 ClientSampled :
 BFWS7

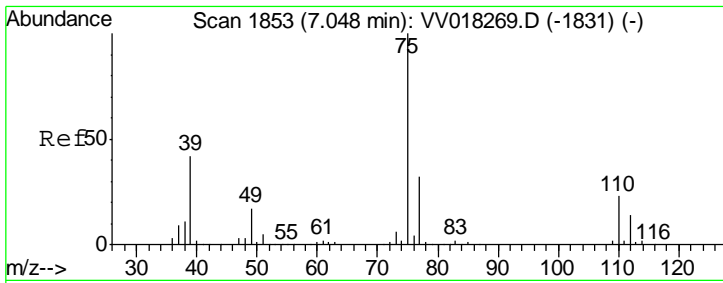
Tgt Ion	Resp	Lower	Upper
83	26291		
55	0.0	63.4	95.2#
98	1.2	38.8	58.2#



#37
 1,2-Dichloropropane
 Concen: 5.516 ug/L
 RT: 6.09 min Scan# 1556
 Delta R.T. -0.10 min
 Lab File: VV018283.D
 Acq: 17 Sep 2020 16:51

Tgt Ion	Resp	Lower	Upper
63	11728		
112	0.0	3.4	5.2#

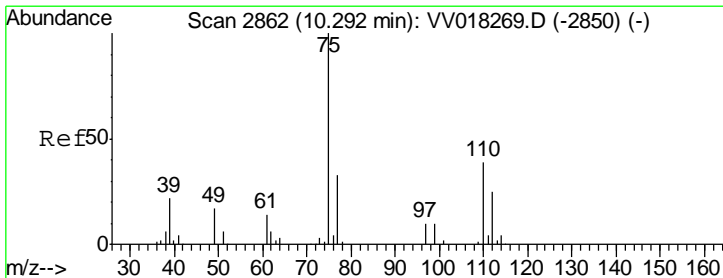
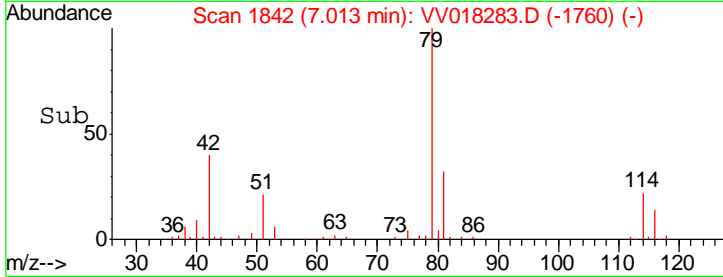
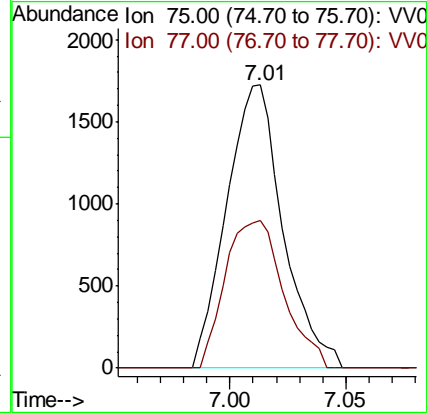
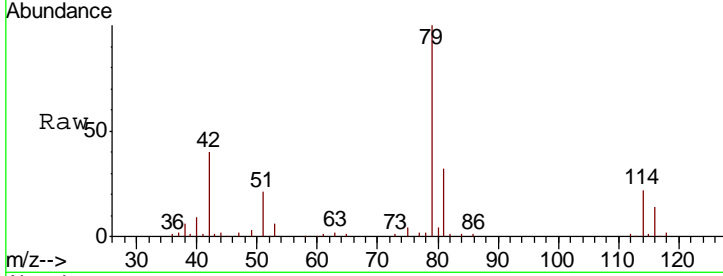




#39
 cis-1,3-Dichloropropene
 Concen: 0.890 ug/L
 RT: 7.01 min Scan# 1842
 Delta R.T. -0.04 min
 Lab File: VV018283.D
 Acq: 17 Sep 2020 16:51

Instrument :
 MSVOA_V
 ClientSampled :
 BFWS7

Tgt Ion: 75 Resp: 2916
 Ion Ratio Lower Upper
 75 100
 77 52.0 22.3 41.3#



#59
 1,2,3-Trichloropropane
 Concen: 6.334 ug/L
 RT: 11.27 min Scan# 3166
 Delta R.T. 0.98 min
 Lab File: VV018283.D
 Acq: 17 Sep 2020 16:51

Tgt Ion: 75 Resp: 15840
 Ion Ratio Lower Upper
 75 100
 77 35.5 25.8 38.6

