

Data Path : Z:\voasrv\HPCHEM1\MSVOA_V\Data\VW091721\
 Data File : VW022188.D
 Acq On : 17 Sep 2021 16:16
 Operator : SY/MD
 Sample : M3676-09
 Misc : 5.0mL/MSVOA_V/WATER
 ALS Vial : 19 Sample Multiplier: 1

Instrument :
 MSVOA_V
 ClientSampled :

Quant Time: Sep 18 02:58:16 2021
 Quant Method : Z:\voasrv\HPCHEM1\MSVOA_V\Method\SFAMVLM082721WMA.M
 Quant Title : VOC Analysis
 QLast Update : Sat Sep 18 02:49:48 2021
 Response via : Initial Calibration

Compound	R.T.	QIon	Response	Conc	Units	Dev(Min)

Internal Standards						
1) 1,4-Difluorobenzene	5.619	114	286953	50.000	ug/L	0.00
28) Chlorobenzene-d5	8.854	117	275377	50.000	ug/L	0.00
58) 1,4-Dichlorobenzene-d4	11.252	152	120289	50.000	ug/L	0.00
System Monitoring Compounds						
4) Vinyl Chloride-d3	1.304	65	72018	36.241	ug/L	0.00
Spiked Amount	50.000	Range 60 - 135	Recovery =	72.480%		
7) Chloroethane-d5	1.561	69	69189	44.585	ug/L	0.00
Spiked Amount	50.000	Range 70 - 130	Recovery =	89.160%		
11) 1,1-Dichloroethene-d2	2.105	63	112471	34.223	ug/L	0.00
Spiked Amount	50.000	Range 60 - 125	Recovery =	68.440%		
21) 2-Butanone-d5	3.876	46	147329	108.104	ug/L	0.00
Spiked Amount	100.000	Range 40 - 130	Recovery =	108.100%		
24) Chloroform-d	4.352	84	176327	48.663	ug/L	0.00
Spiked Amount	50.000	Range 70 - 125	Recovery =	97.320%		
26) 1,2-Dichloroethane-d4	5.034	65	110479	51.764	ug/L	0.00
Spiked Amount	50.000	Range 70 - 125	Recovery =	103.520%		
32) Benzene-d6	5.053	84	360130	48.216	ug/L	0.00
Spiked Amount	50.000	Range 70 - 125	Recovery =	96.440%		
36) 1,2-Dichloropropane-d6	6.072	67	116375	49.543	ug/L	0.00
Spiked Amount	50.000	Range 70 - 120	Recovery =	99.080%		
41) Toluene-d8	7.320	98	317807	45.074	ug/L	0.00
Spiked Amount	50.000	Range 80 - 120	Recovery =	90.140%		
43) trans-1,3-Dichloroprop...	7.625	79	47514	42.499	ug/L	0.00
Spiked Amount	50.000	Range 60 - 125	Recovery =	85.000%		
47) 2-Hexanone-d5	8.092	63	87154	96.700	ug/L	0.00
Spiked Amount	100.000	Range 45 - 130	Recovery =	96.700%		
56) 1,1,2,2-Tetrachloroeth...	10.217	84	148652	49.413	ug/L	0.00
Spiked Amount	50.000	Range 65 - 120	Recovery =	98.820%		
66) 1,2-Dichlorobenzene-d4	11.625	152	121946	51.568	ug/L	0.00
Spiked Amount	50.000	Range 80 - 120	Recovery =	103.140%		

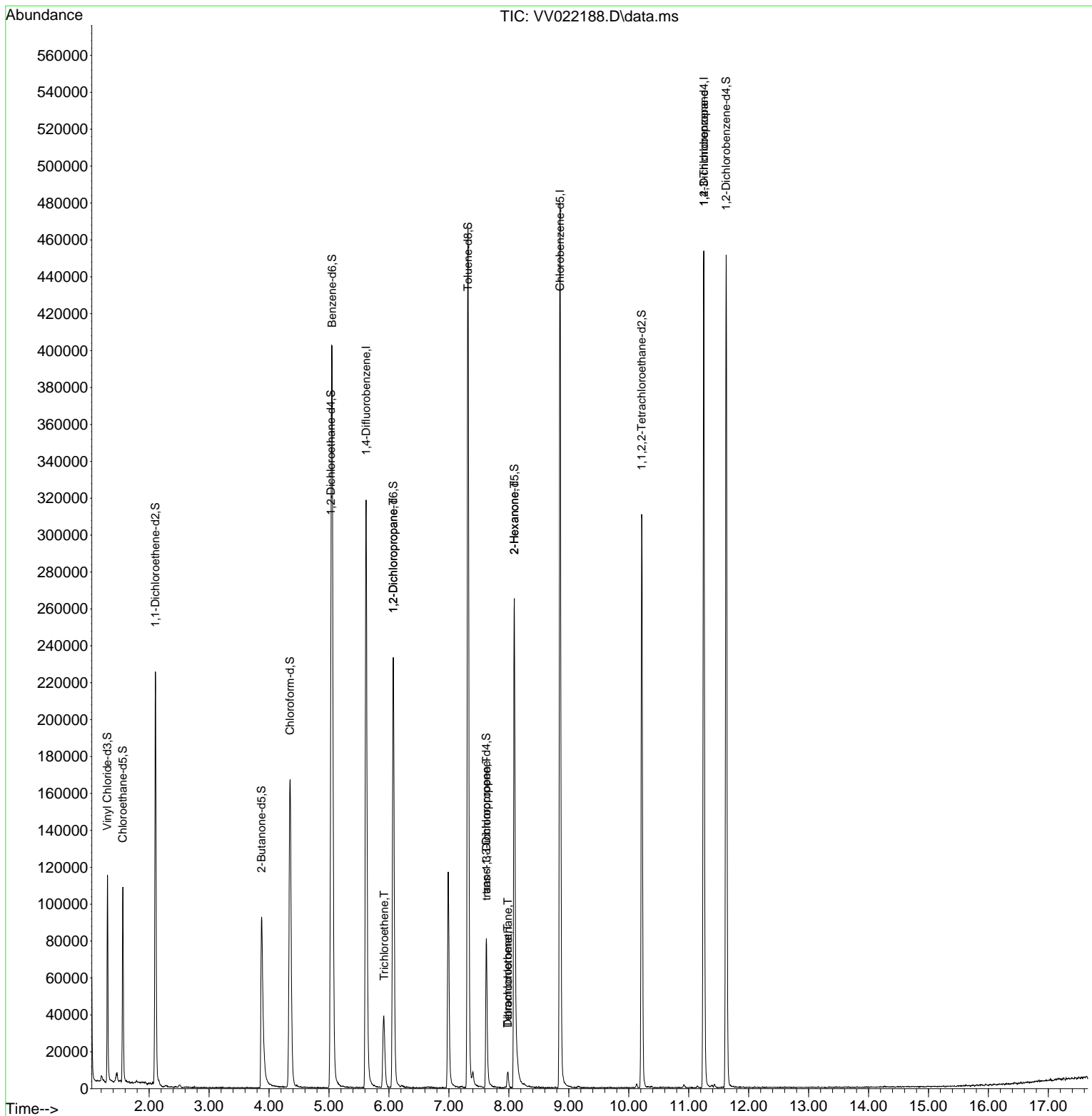
Target Compounds						Qvalue
34) Trichloroethene	5.921	95	8014	3.531	ug/L	99
37) 1,2-Dichloropropane	6.072	63	12579	6.057	ug/L #	86
44) trans-1,3-Dichloropropene	7.629	75	1973	0.661	ug/L #	54
46) Tetrachloroethene	7.982	164	2161	1.225	ug/L	93
48) 2-Hexanone	8.092	43	10671	4.885	ug/L #	71
49) Dibromochloromethane	7.985	129	1893	0.837	ug/L #	11
61) 1,2,3-Trichloropropane	11.252	75	13732	6.587	ug/L #	64

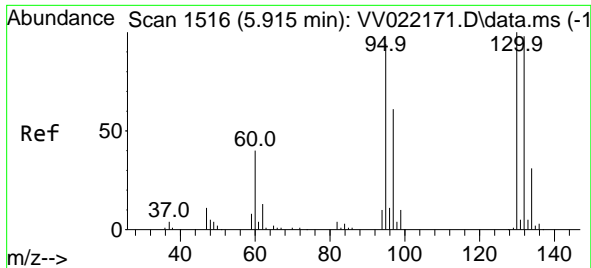
(#) = qualifier out of range (m) = manual integration (+) = signals summed

Data Path : Z:\voasrv\HPCHEM1\MSVOA_V\Data\VV091721\
 Data File : VV022188.D
 Acq On : 17 Sep 2021 16:16
 Operator : SY/MD
 Sample : M3676-09
 Misc : 5.0mL/MSVOA_V/WATER
 ALS Vial : 19 Sample Multiplier: 1

Instrument :
 MSVOA_V
 ClientSampled :

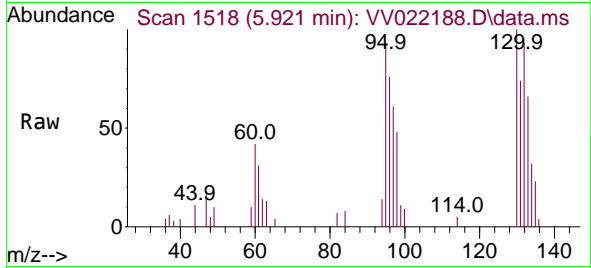
Quant Time: Sep 18 02:58:16 2021
 Quant Method : Z:\voasrv\HPCHEM1\MSVOA_V\Method\SFAMVLM082721WMA.M
 Quant Title : VOC Analysis
 QLast Update : Sat Sep 18 02:49:48 2021
 Response via : Initial Calibration





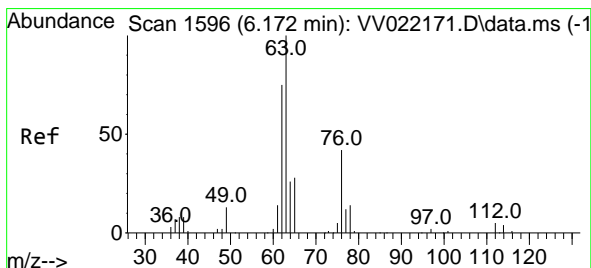
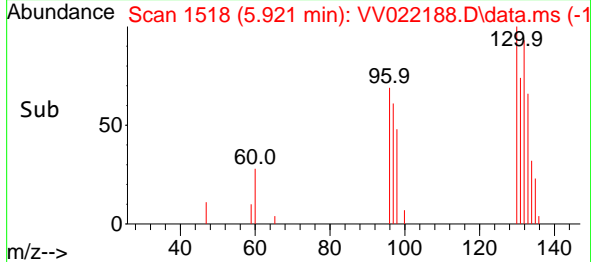
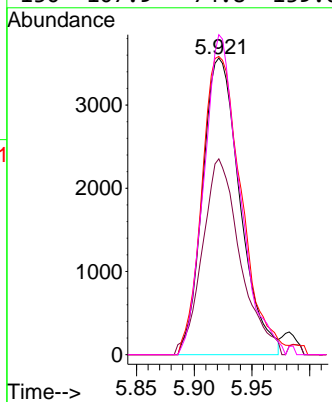
#34
 Trichloroethene
 Concen: 3.531 ug/L
 RT: 5.921 min Scan# 1518
 Delta R.T. 0.006 min
 Lab File: VV022188.D
 Acq: 17 Sep 2021 16:16

Instrument :
 MSVOA_V
 ClientSampled :

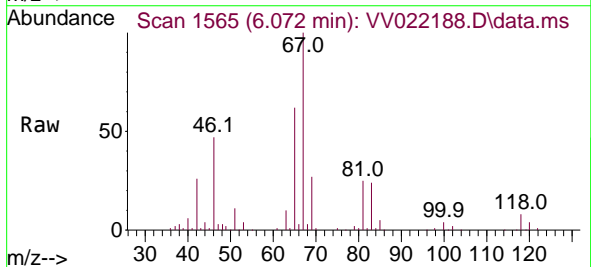


Tgt Ion: 95 Resp: 8014

Ion	Ratio	Lower	Upper
95	100		
97	66.0	44.1	81.9
132	100.5	70.7	131.3
130	107.9	74.8	139.0

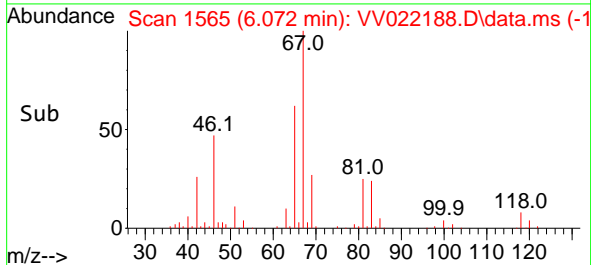
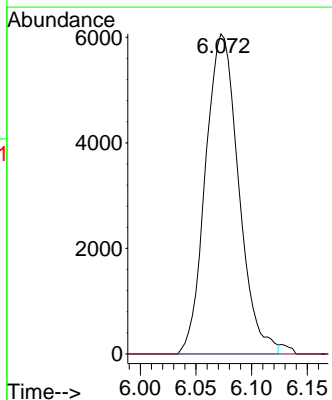


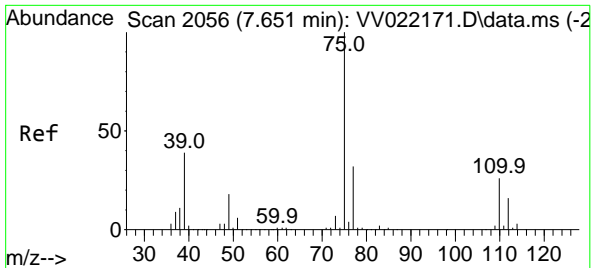
#37
 1,2-Dichloropropane
 Concen: 6.057 ug/L
 RT: 6.072 min Scan# 1565
 Delta R.T. -0.100 min
 Lab File: VV022188.D
 Acq: 17 Sep 2021 16:16



Tgt Ion: 63 Resp: 12579

Ion	Ratio	Lower	Upper
63	100		
112	0.0	3.8	5.6#

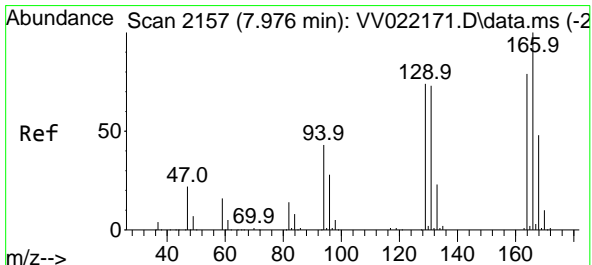
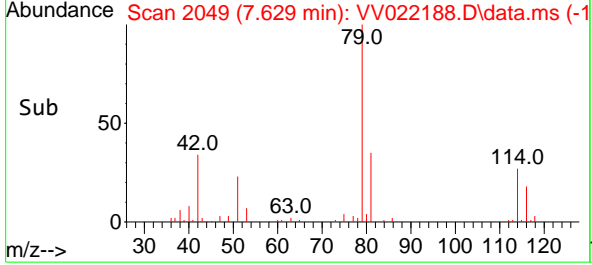
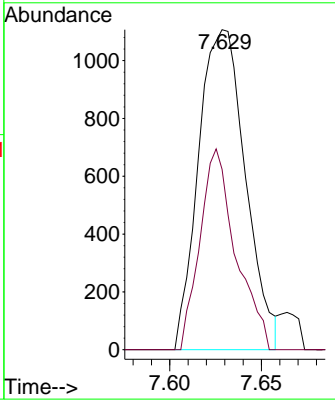
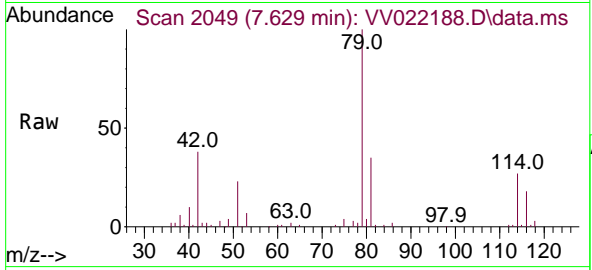




#44
 trans-1,3-Dichloropropene
 Concen: 0.661 ug/L
 RT: 7.629 min Scan# 2049
 Delta R.T. -0.023 min
 Lab File: VV022188.D
 Acq: 17 Sep 2021 16:16

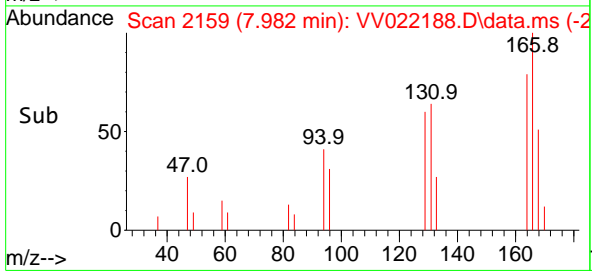
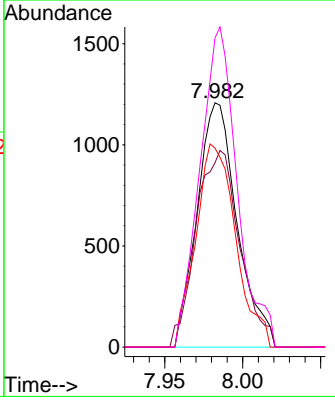
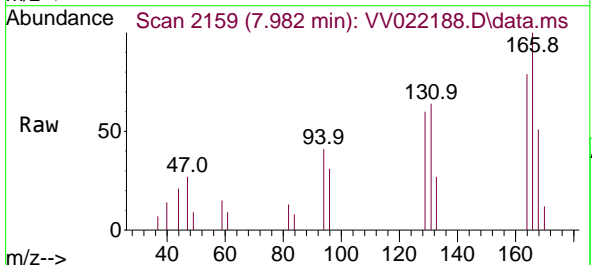
Instrument : MSVOA_V
 ClientSampled :

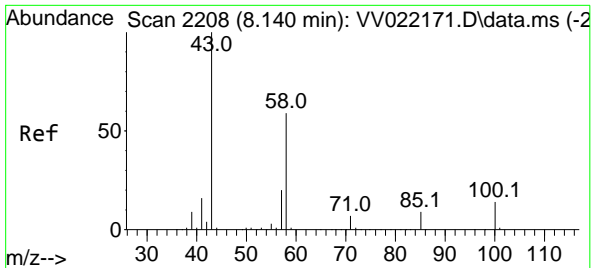
Tgt Ion: 75 Resp: 1973
 Ion Ratio Lower Upper
 75 100
 77 56.4 21.8 40.6#



#46
 Tetrachloroethene
 Concen: 1.225 ug/L
 RT: 7.982 min Scan# 2159
 Delta R.T. 0.006 min
 Lab File: VV022188.D
 Acq: 17 Sep 2021 16:16

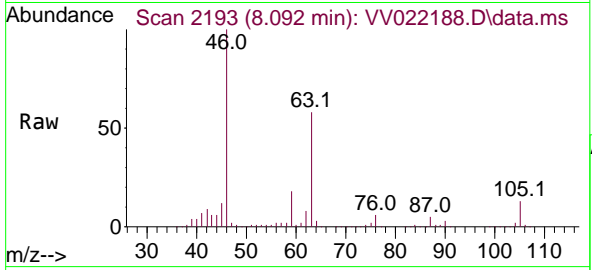
Tgt Ion:164 Resp: 2161
 Ion Ratio Lower Upper
 164 100
 129 75.5 62.9 116.9
 131 81.4 61.0 113.4
 166 126.6 90.6 168.3





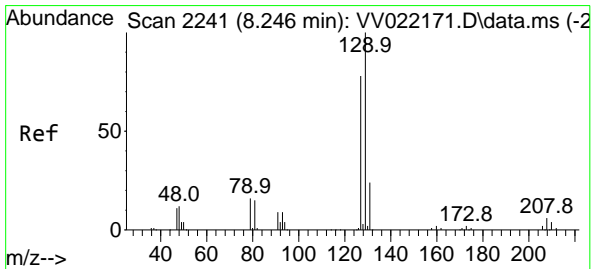
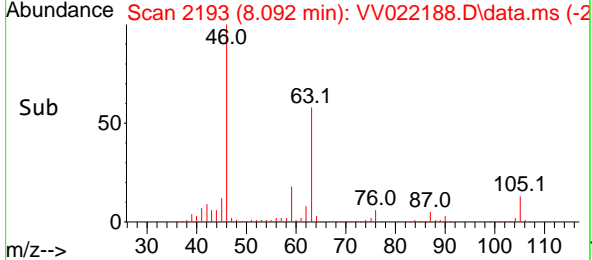
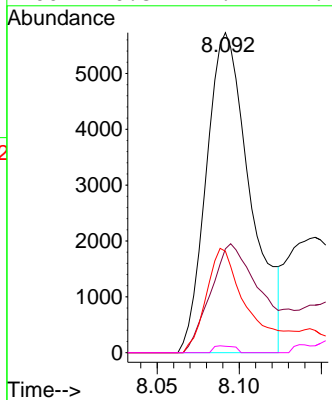
#48
 2-Hexanone
 Concen: 4.885 ug/L
 RT: 8.092 min Scan# 2193
 Delta R.T. -0.048 min
 Lab File: VV022188.D
 Acq: 17 Sep 2021 16:16

Instrument :
 MSVOA_V
 ClientSampled :

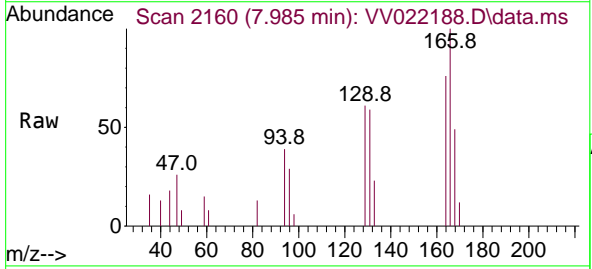


Tgt Ion: 43 Resp: 10671

Ion	Ratio	Lower	Upper
43	100		
58	37.3	47.5	71.3#
57	31.8	15.9	23.9#
100	0.8	11.4	17.2#

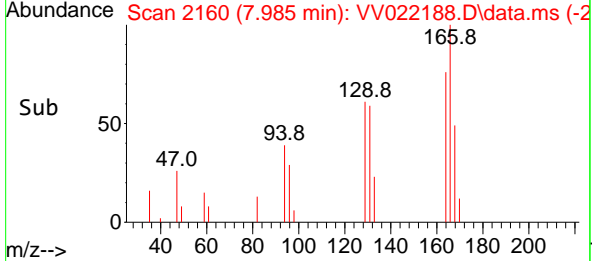
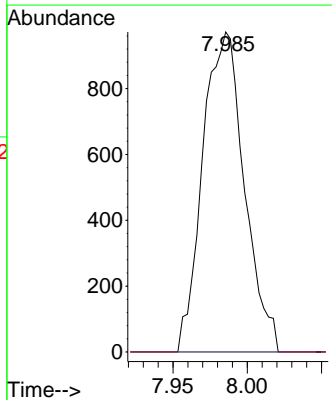


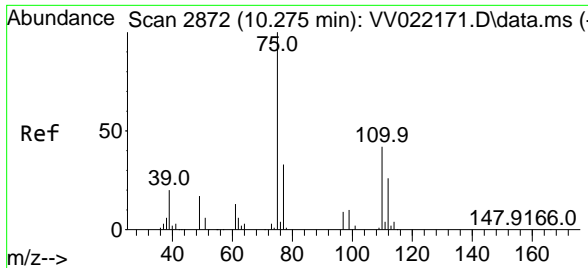
#49
 Dibromochloromethane
 Concen: 0.837 ug/L
 RT: 7.985 min Scan# 2160
 Delta R.T. -0.260 min
 Lab File: VV022188.D
 Acq: 17 Sep 2021 16:16



Tgt Ion: 129 Resp: 1893

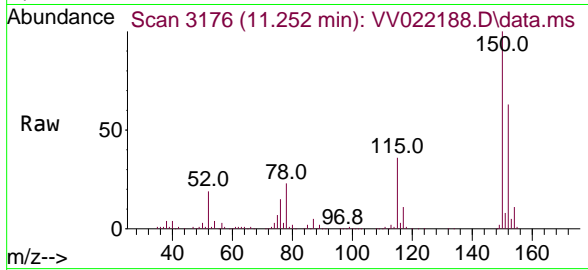
Ion	Ratio	Lower	Upper
129	100		
127	0.0	54.1	100.5#





#61
 1,2,3-Trichloropropane
 Concen: 6.587 ug/L
 RT: 11.252 min Scan# 3176
 Delta R.T. 0.977 min
 Lab File: VV022188.D
 Acq: 17 Sep 2021 16:16

Instrument :
 MSVOA_V
 ClientSampled :



Tgt Ion: 75 Resp: 13732

Ion	Ratio	Lower	Upper
75	100		
77	32.5	26.2	39.2
110	1.8	33.8	50.6#

