

Data Path : Z:\voasrv\HPCHEM1\MSVOA_V\DATA\VV091724\
 Data File : VV037310.D
 Acq On : 17 Sep 2024 12:19
 Operator : SY/MD
 Sample : P3967-16DL 4X
 Misc : 25.0mL/MSVOA_V/WATER
 ALS Vial : 1 Sample Multiplier: 1

Instrument :
 MSVOA_V
ClientSampleId :

Quant Time: Sep 18 05:38:03 2024
 Quant Method : Z:\voasrv\HPCHEM1\MSVOA_V\Method\SFAMVSI091324.M
 Quant Title : TRACE VOA SOM01.0
 QLast Update : Sat Sep 14 03:38:32 2024
 Response via : Initial Calibration

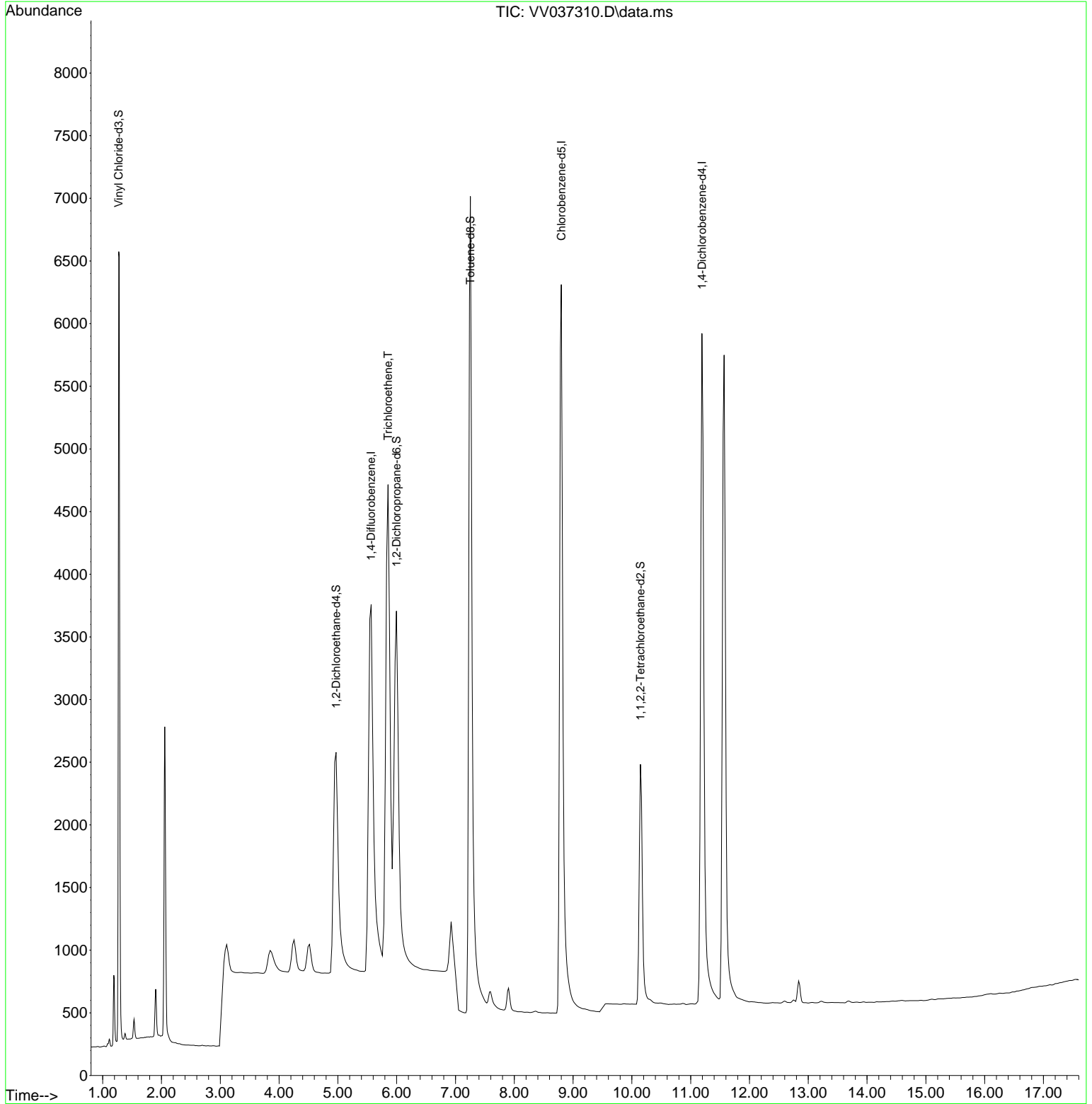
| Compound | R.T. | QI on | Response | Conc | Units | Dev(Min) |
|------------------------------------|--------|----------------|----------|-------|----------|----------|
| Internal Standards | | | | | | |
| 1) 1,4-Difluorobenzene | 5.566 | 114 | 13081 | 0.500 | ug/L | 0.00 |
| 5) Chlorobenzene-d5 | 8.800 | 117 | 12630 | 0.500 | ug/L | 0.00 |
| 11) 1,4-Dichlorobenzene-d4 | 11.191 | 152 | 6427 | 0.500 | ug/L | 0.00 |
| System Monitoring Compounds | | | | | | |
| 2) Vinyl Chloride-d3 | 1.273 | 65 | 7487 | 0.535 | ug/L | 0.00 |
| Spiked Amount | 0.500 | Range 40 - 130 | Recovery | = | 106.000% | |
| 4) 1,2-Dichloroethane-d4 | 4.969 | 65 | 4588 | 0.575 | ug/L | 0.00 |
| Spiked Amount | 0.500 | Range 70 - 130 | Recovery | = | 116.000% | |
| 7) 1,2-Dichloropropane-d6 | 5.995 | 67 | 5681 | 0.542 | ug/L | 0.00 |
| Spiked Amount | 0.500 | Range 60 - 140 | Recovery | = | 108.000% | |
| 8) Toluene-d8 | 7.253 | 98 | 15141 | 0.492 | ug/L | 0.00 |
| Spiked Amount | 0.500 | Range 70 - 130 | Recovery | = | 98.000% | |
| 10) 1,1,2,2-Tetrachloroeth. | 10.146 | 84 | 4380 | 0.558 | ug/L | 0.00 |
| Spiked Amount | 0.500 | Range 65 - 120 | Recovery | = | 112.000% | |
| Target Compounds | | | | | | |
| 6) Trichloroethene | 5.852 | 95 | 5701 | 0.578 | ug/L | 100 |

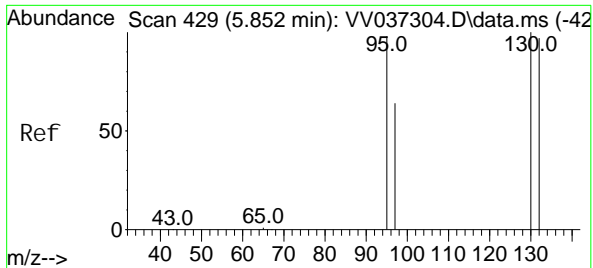
(#) = qualifier out of range (m) = manual integration (+) = signals summed

Data Path : Z:\voasrv\HPCHEM1\MSVOA_V\DATA\VV091724\
 Data File : VV037310.D
 Acq On : 17 Sep 2024 12:19
 Operator : SY/MD
 Sample : P3967-16DL 4X
 Misc : 25.0mL/MSVOA_V/WATER
 ALS Vial : 1 Sample Multiplier: 1

Instrument :
 MSVOA_V
 ClientSampleId :

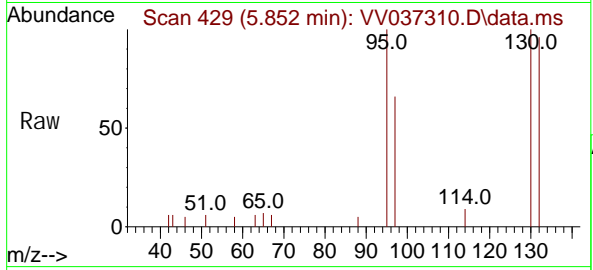
Quant Time: Sep 18 05:38:03 2024
 Quant Method : Z:\voasrv\HPCHEM1\MSVOA_V\Method\SFAMVSI M091324.M
 Quant Title : TRACE VOA SOM01.0
 QLast Update : Sat Sep 14 03:38:32 2024
 Response via : Initial Calibration





Tri chloroethene
 Concen: 0.578 ug/L
 RT: 5.852 min Scan# 41
 Delta R.T. -0.000 min
 Lab File: VV037310.D
 Acq: 17 Sep 2024 12:19

Instrument : MSVOA_V
 ClientSampleId :



Tgt Ion: 95 Resp: 5701

| Ion | Ratio | Lower | Upper |
|-----|-------|-------|-------|
| 95 | 100 | | |
| 97 | 66.2 | 46.4 | 86.2 |
| 132 | 96.0 | 67.5 | 125.4 |
| 130 | 100.1 | 70.3 | 130.7 |

