

Data File : VV007600.D  
 Acq On : 18 Sep 2018 13:02  
 Operator : SY/MD  
 Sample : VSTD02070  
 Misc : 25.0 mL/MSVOA\_V/WATER  
 ALS Vial : 6 Sample Multiplier: 1

Instrument :  
 MSVOA\_V  
 ClientSampleId :  
 VSTD02070

Quant Time: Sep 19 01:27:33 2018  
 Quant Method : Z:\VOASRV\HPCHEM1\MSVOA\_V\METHOD\SOMVTR091818WMA.M  
 Quant Title : TRACE VOA SOM01.0  
 QLast Update : Wed Sep 19 01:25:54 2018  
 Response via : Initial Calibration

Internal Standards	R.T.	QIon	Response	Conc	Units	Dev(Min)
1) 1,4-Difluorobenzene	5.67	114	121332	5.00	ug/L	0.00
28) Chlorobenzene-d5	8.90	117	114999	5.00	ug/L	0.00
60) 1,4-Dichlorobenzene-d4	11.30	152	66392	5.00	ug/L	0.00

System Monitoring Compounds

4) Vinyl Chloride-d3	1.32	65	120142	19.17	ug/L	0.00
7) Chloroethane-d5	1.59	69	111073	20.92	ug/L	0.00
11) 1,1-Dichloroethene-d2	2.14	63	290400	21.68	ug/L	0.00
20) 2-Butanone-d5	3.96	46	191580	219.76	ug/L	0.00
24) Chloroform-d	4.41	84	265799	20.66	ug/L	0.00
26) 1,2-Dichloroethane-d4	5.09	65	132452	21.03	ug/L	0.00
32) Benzene-d6	5.10	84	517345	20.02	ug/L	0.00
36) 1,2-Dichloropropane-d6	6.13	67	147702	19.30	ug/L	0.00
41) Toluene-d8	7.36	98	557877	20.70	ug/L	0.00
43) trans-1,3-Dichloropropene-	7.67	79	71920	20.51	ug/L	0.00
46) 2-Hexanone-d5	8.14	63	168229	298.11	ug/L	0.00
57) 1,1,2,2-Tetrachloroethane-	10.27	84	118626	22.23	ug/L	0.00
64) 1,2-Dichlorobenzene-d4	11.68	152	244317	20.17	ug/L	0.00

Target Compounds

						Qvalue
2) Dichlorodifluoromethane	1.14	85	193614	27.088	ug/L	99
3) Chloromethane	1.25	50	146158	24.208	ug/L	99
5) Vinyl chloride	1.32	62	168192	24.989	ug/L	97
6) Bromomethane	1.54	94	128021	26.621	ug/L	99
8) Chloroethane	1.60	64	108398	26.282	ug/L	99
9) Trichlorofluoromethane	1.77	101	343059	25.742	ug/L	100
10) 1,1,2-Trichloro-1,2,2-trif	2.14	101	187413	25.663	ug/L	100
12) 1,1-Dichloroethene	2.14	96	164765	25.038	ug/L	98
13) Acetone	2.21	43	135556	228.009	ug/L	93
14) Carbon disulfide	2.32	76	491108	25.698	ug/L	99
15) Methyl Acetate	2.47	43	40106	23.504	ug/L	93
16) Methylene chloride	2.54	84	158441	22.436	ug/L	98
17) Methyl tert-butyl Ether	2.82	73	369388	24.001	ug/L	99
18) trans-1,2-Dichloroethene	2.79	96	180120	25.419	ug/L	99
19) 1,1-Dichloroethane	3.23	63	236770	23.245	ug/L	98
21) 2-Butanone	4.05	43	223808	227.660	ug/L	98
22) cis-1,2-Dichloroethene	3.97	96	166808	24.160	ug/L	95
23) Bromochloromethane	4.31	128	75315	24.805	ug/L	97
25) Chloroform	4.43	83	284054	24.363	ug/L	98
27) 1,2-Dichloroethane	5.19	62	165170	24.813	ug/L	99
29) 1,1,1-Trichloroethane	4.66	97	272800	23.403	ug/L	99
30) Cyclohexane	4.73	56	232753	22.982	ug/L	99
31) Carbon tetrachloride	4.88	117	259070	23.670	ug/L	100
33) Benzene	5.15	78	590998	23.790	ug/L	100
34) Trichloroethene	5.96	95	183016	23.810	ug/L	99
35) Methylcyclohexane	6.18	83	286678	24.334	ug/L	99
37) 1,2-Dichloropropane	6.23	63	142398	23.485	ug/L	100
38) Bromodichloromethane	6.56	83	207003	23.708	ug/L	99
39) cis-1,3-Dichloropropene	7.08	75	235533	24.516	ug/L	98
40) 4-Methyl-2-pentanone	7.29	43	795766	239.825	ug/L	99

Data File : VV007600.D  
 Acq On : 18 Sep 2018 13:02  
 Operator : SY/MD  
 Sample : VSTD02070  
 Misc : 25.0 mL/MSVOA\_V/WATER  
 ALS Vial : 6 Sample Multiplier: 1

Instrument :  
 MSVOA\_V  
 ClientSampleId :  
 VSTD02070

Quant Time: Sep 19 01:27:33 2018  
 Quant Method : Z:\VOASRV\HPCHEM1\MSVOA\_V\METHOD\SOMVTR091818WMA.M  
 Quant Title : TRACE VOA SOM01.0  
 QLast Update : Wed Sep 19 01:25:54 2018  
 Response via : Initial Calibration

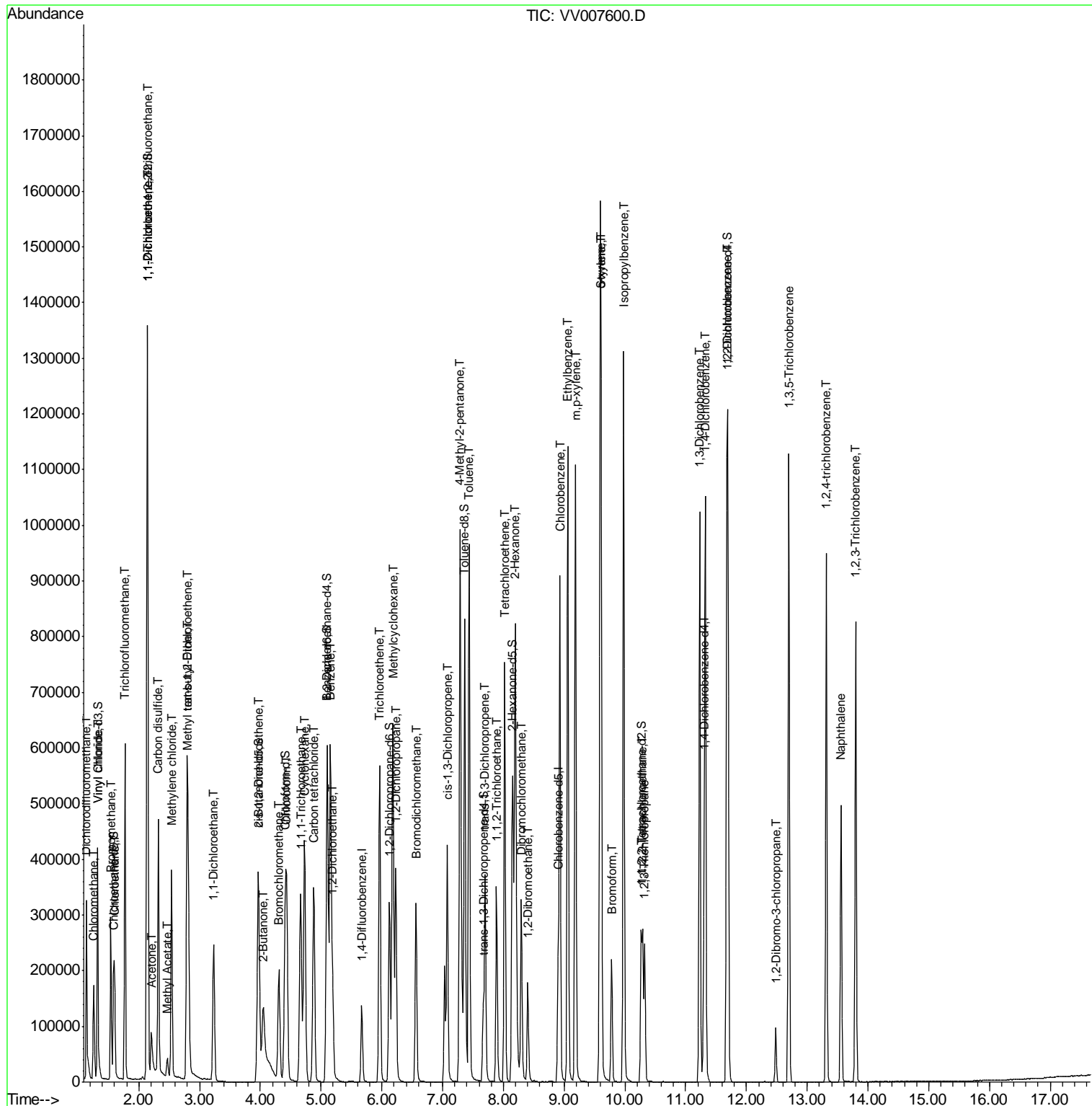
Internal Standards	R.T.	QIon	Response	Conc	Units	Dev(Min)
42) Toluene	7.44	91	701199	24.485	ug/L	99
44) trans-1,3-Dichloropropene	7.70	75	198709	25.194	ug/L	98
45) 1,1,2-Trichloroethane	7.89	97	111970	24.589	ug/L	97
47) Tetrachloroethene	8.02	164	176343	25.494	ug/L	99
48) 2-Hexanone	8.20	43	626238	244.158	ug/L	100
49) Dibromochloromethane	8.30	129	164841	25.757	ug/L	100
50) 1,2-Dibromoethane	8.40	107	114497	25.895	ug/L	97
51) Chlorobenzene	8.93	112	487166	25.211	ug/L	99
52) Ethylbenzene	9.06	91	814208	25.338	ug/L	99
53) m,p-xylene	9.19	106	322903	25.889	ug/L	99
54) o-xylene	9.59	106	314873	25.886	ug/L	100
55) Styrene	9.61	104	538574	27.042	ug/L	99
56) Isopropylbenzene	9.98	105	868809	26.132	ug/L	100
58) 1,1,2,2-Tetrachloroethane	10.29	83	117517	26.852	ug/L	99
59) 1,2,3-Trichloropropane	10.32	75	93863	25.296	ug/L	98
61) Bromoform	9.78	173	101016	25.266	ug/L	98
62) 1,3-Dichlorobenzene	11.23	146	436293	24.750	ug/L	99
63) 1,4-Dichlorobenzene	11.32	146	435911	24.786	ug/L	99
65) 1,2-Dichlorobenzene	11.69	146	404203	24.683	ug/L	99
66) 1,2-Dibromo-3-chloropropan	12.48	75	21413	26.622	ug/L	95
67) 1,3,5-Trichlorobenzene	12.70	180	369226	26.683	ug/L	99
68) 1,2,4-trichlorobenzene	13.31	180	306395	31.024	ug/L	98
69) Naphthalene	13.56	128	406391	34.547	ug/L	100
70) 1,2,3-Trichlorobenzene	13.80	180	269290	29.814	ug/L	98

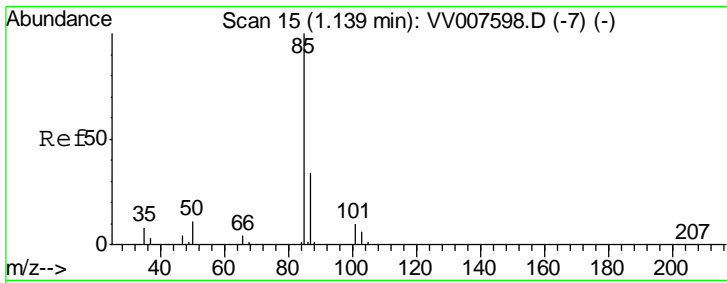
(#) = qualifier out of range (m) = manual integration (+) = signals summed

Data File : VV007600.D  
Acq On : 18 Sep 2018 13:02  
Operator : SY/MD  
Sample : VSTD02070  
Misc : 25.0 mL/MSVOA\_V/WATER  
ALS Vial : 6 Sample Multiplier: 1

Instrument :  
MSVOA\_V  
Client Sampled :  
VSTD02070

Quant Time: Sep 19 01:27:33 2018  
Quant Method : Z:\VOASRV\HPCHEM1\MSVOA\_V\METHOD\SOMVTR091818WMA.M  
Quant Title : TRACE VOA SOM01.0  
QLast Update : Wed Sep 19 01:25:54 2018  
Response via : Initial Calibration

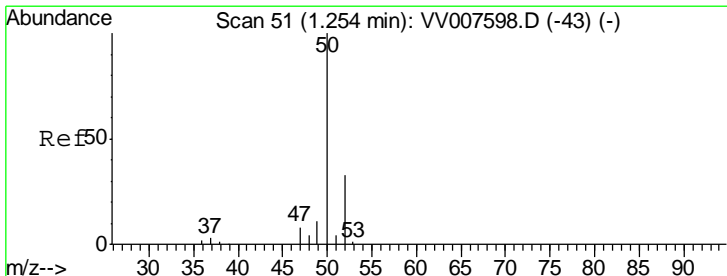
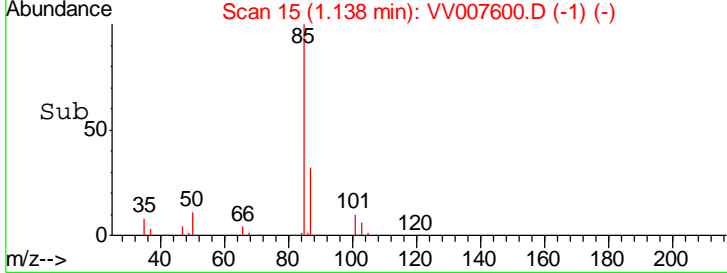
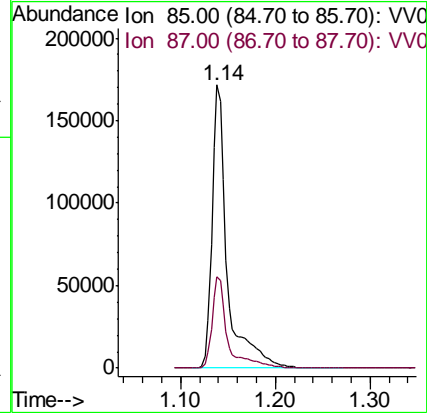
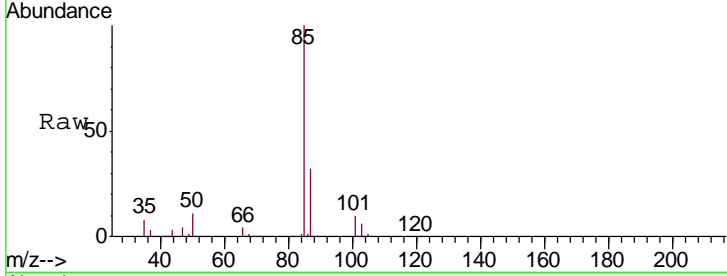




#2  
 Dichlorodifluoromethane  
 Concen: 27.088 ug/L  
 RT: 1.14 min Scan# 15  
 Delta R.T. -0.00 min  
 Lab File: VV007600.D  
 Acq: 18 Sep 2018 13:02

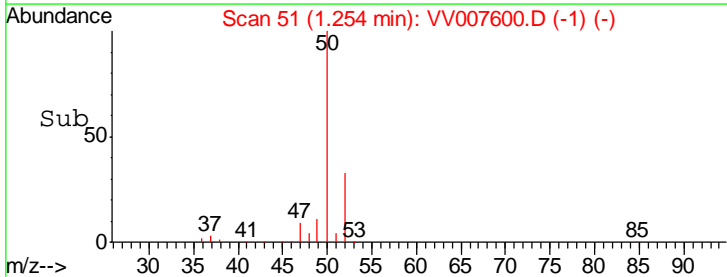
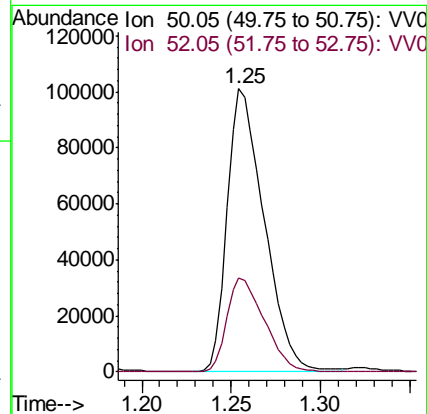
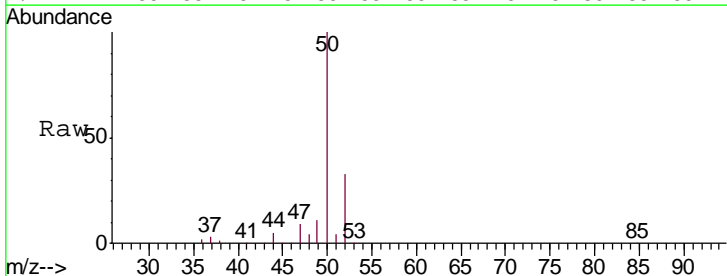
Instrument :  
 MSVOA\_V  
 ClientSampled :  
 VSTD02070

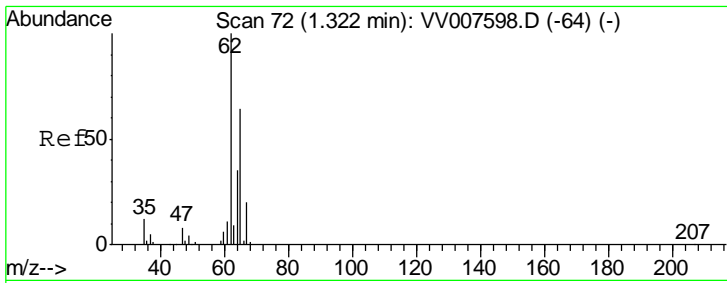
Tgt Ion: 85 Resp: 193614  
 Ion Ratio Lower Upper  
 85 100  
 87 32.8 26.6 40.0



#3  
 Chloromethane  
 Concen: 24.208 ug/L  
 RT: 1.25 min Scan# 51  
 Delta R.T. -0.00 min  
 Lab File: VV007600.D  
 Acq: 18 Sep 2018 13:02

Tgt Ion: 50 Resp: 146158  
 Ion Ratio Lower Upper  
 50 100  
 52 33.3 22.8 42.4

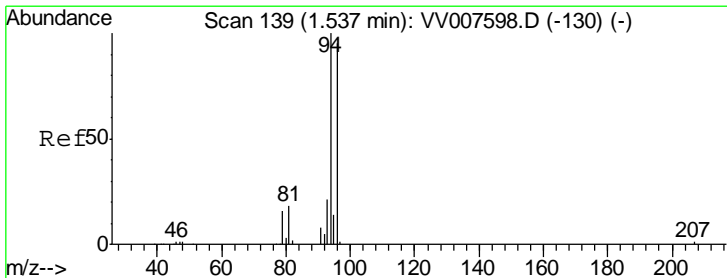
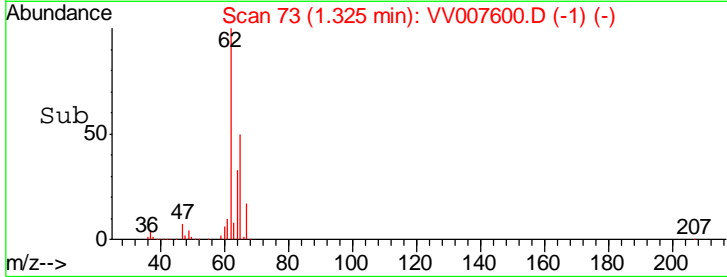
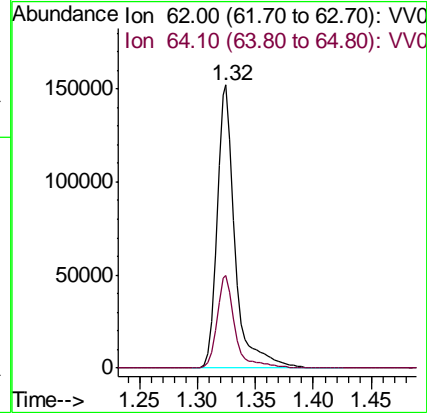
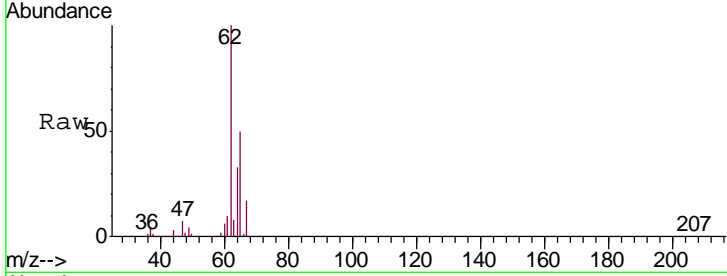




#5  
 Vinyl chloride  
 Concen: 24.989 ug/L  
 RT: 1.32 min Scan# 73  
 Delta R.T. 0.00 min  
 Lab File: VV007600.D  
 Acq: 18 Sep 2018 13:02

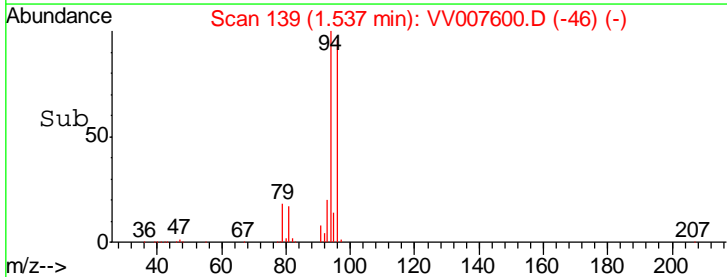
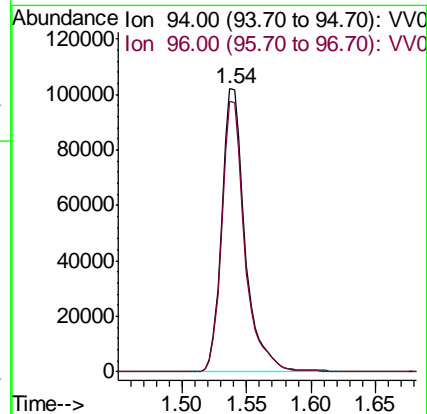
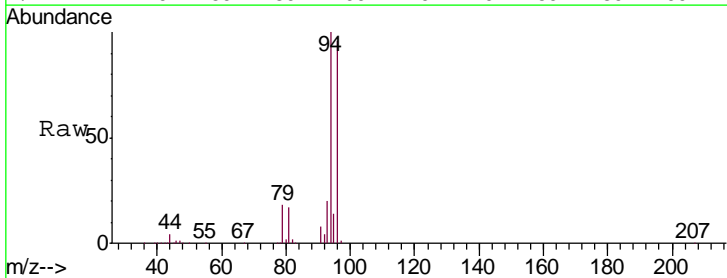
Instrument :  
 MSVOA\_V  
 ClientSampled :  
 VSTD02070

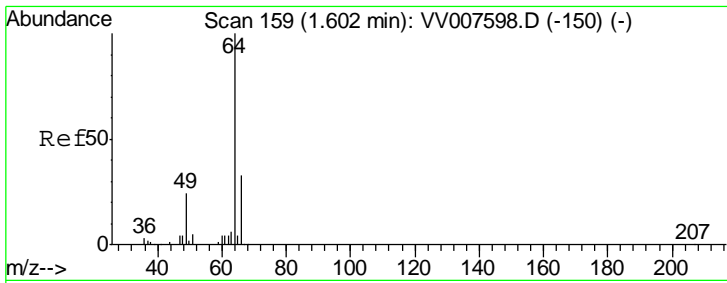
Tgt Ion: 62 Resp: 168192  
 Ion Ratio Lower Upper  
 62 100  
 64 32.9 24.2 45.0



#6  
 Bromomethane  
 Concen: 26.621 ug/L  
 RT: 1.54 min Scan# 139  
 Delta R.T. -0.00 min  
 Lab File: VV007600.D  
 Acq: 18 Sep 2018 13:02

Tgt Ion: 94 Resp: 128021  
 Ion Ratio Lower Upper  
 94 100  
 96 95.7 66.6 123.6

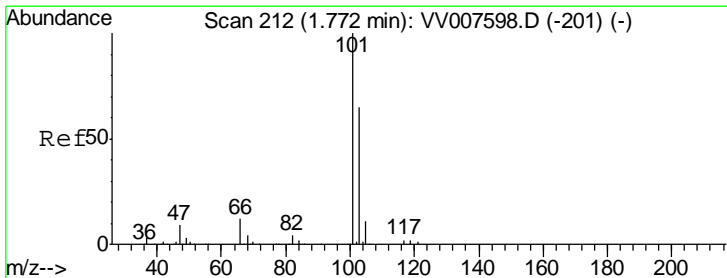
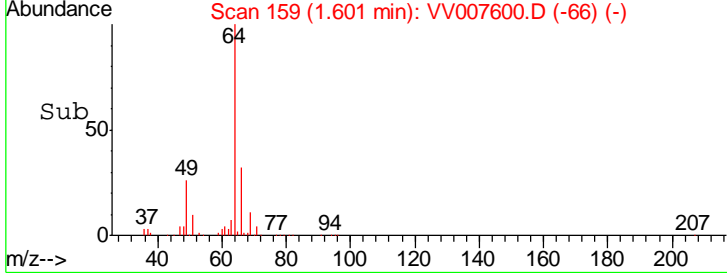
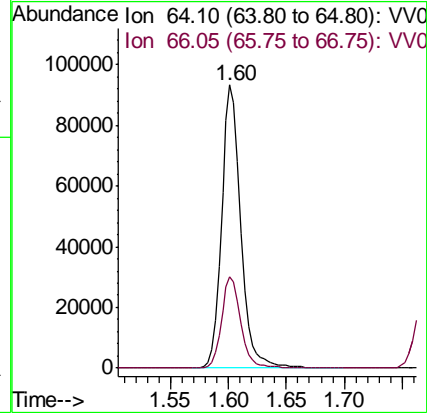
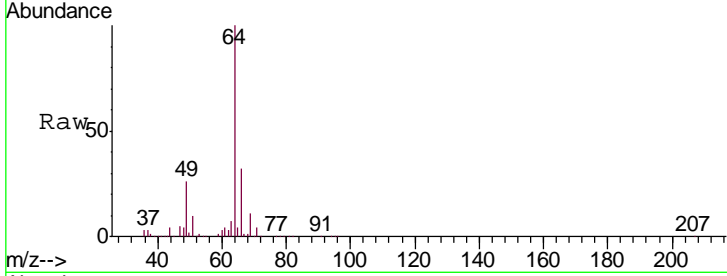




#8  
 Chloroethane  
 Concen: 26.282 ug/L  
 RT: 1.60 min Scan# 159  
 Delta R.T. -0.00 min  
 Lab File: VV007600.D  
 Acq: 18 Sep 2018 13:02

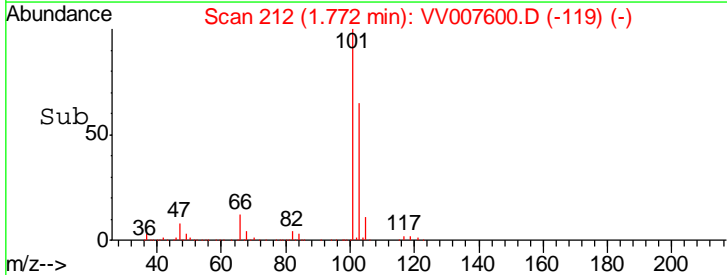
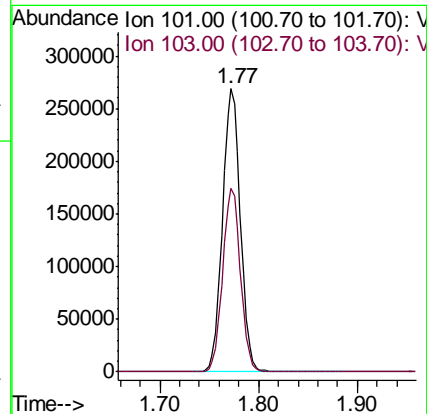
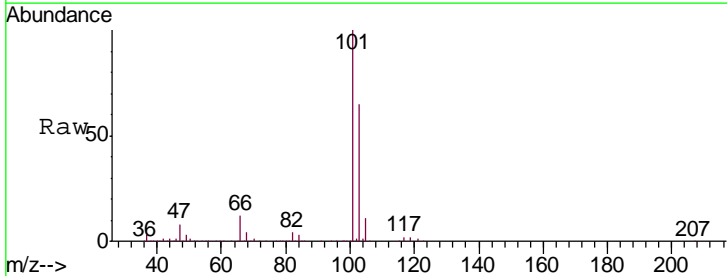
Instrument : MSVOA\_V  
 ClientSampled : VSTD02070

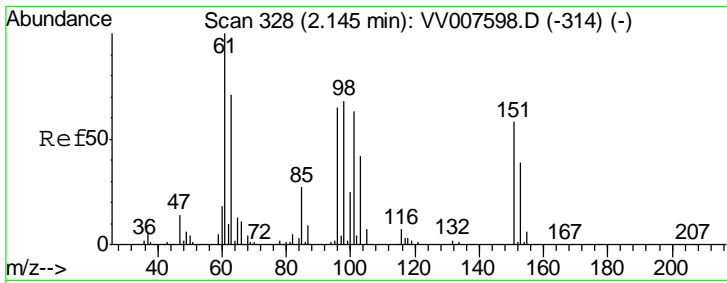
Tgt Ion: 64 Resp: 108398  
 Ion Ratio Lower Upper  
 64 100  
 66 32.4 22.9 42.5



#9  
 Trichlorofluoromethane  
 Concen: 25.742 ug/L  
 RT: 1.77 min Scan# 212  
 Delta R.T. -0.00 min  
 Lab File: VV007600.D  
 Acq: 18 Sep 2018 13:02

Tgt Ion: 101 Resp: 343059  
 Ion Ratio Lower Upper  
 101 100  
 103 64.9 52.2 78.2





#10

1,1,2-Trichloro-1,2,2-trifluoroethane

Concen: 25.663 ug/L

RT: 2.14 min Scan# 327

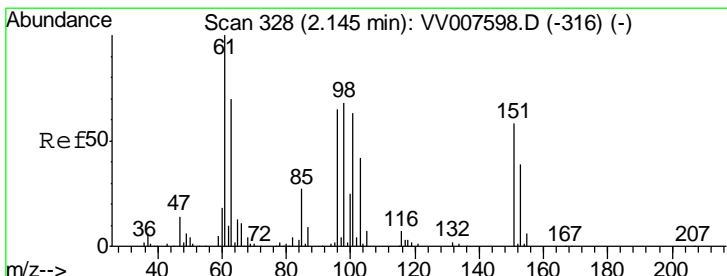
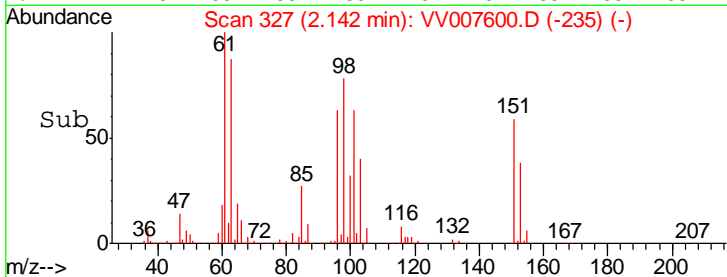
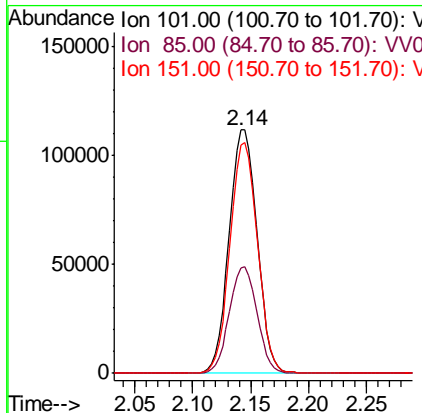
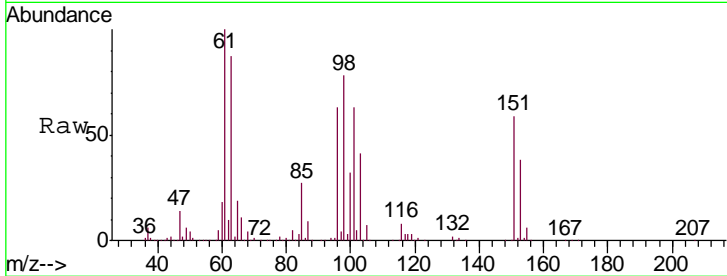
Delta R.T. -0.00 min

Lab File: VV007600.D

Acq: 18 Sep 2018 13:02

Instrument :  
MSVOA\_V  
ClientSampled :  
VSTD02070

Tgt Ion	Resp	Lower	Upper
101	187413		
101	100		
85	43.3	34.4	51.6
151	92.8	74.1	111.1



#12

1,1-Dichloroethene

Concen: 25.038 ug/L

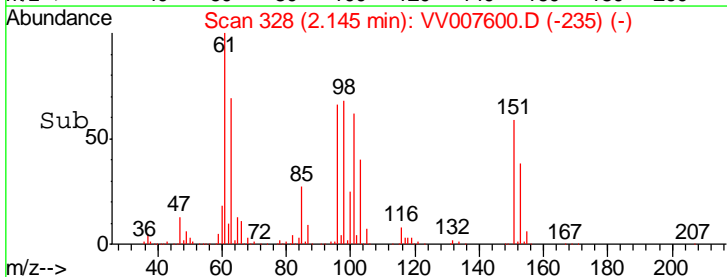
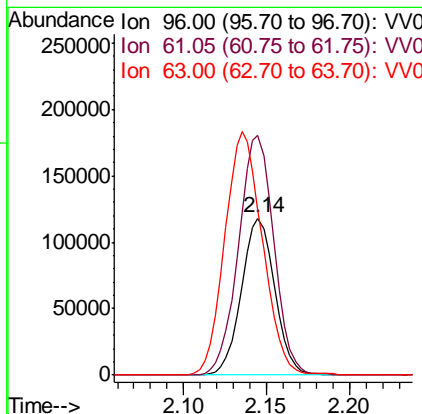
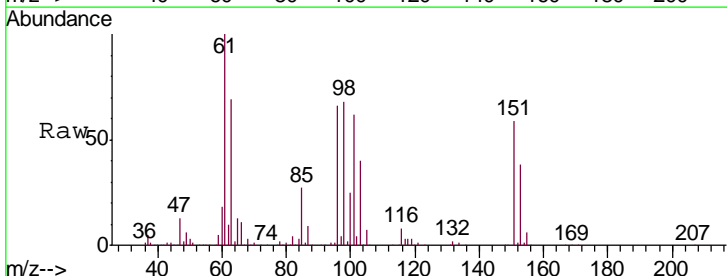
RT: 2.14 min Scan# 328

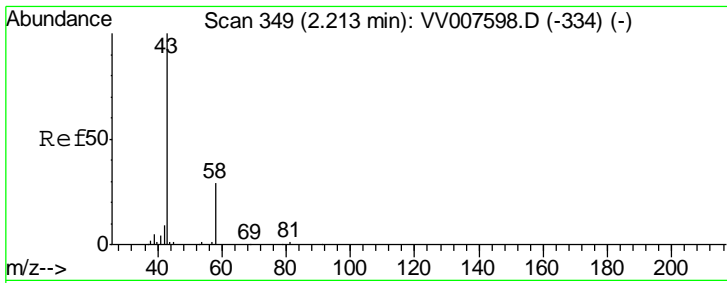
Delta R.T. -0.00 min

Lab File: VV007600.D

Acq: 18 Sep 2018 13:02

Tgt Ion	Resp	Lower	Upper
96	164765		
96	100		
61	152.6	108.1	200.9
63	105.7	76.9	142.9

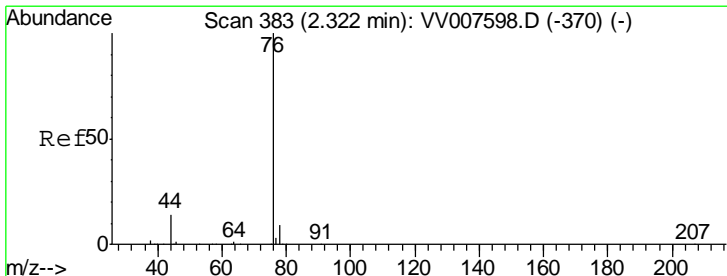
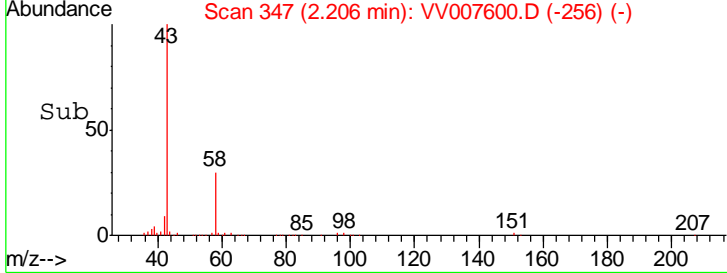
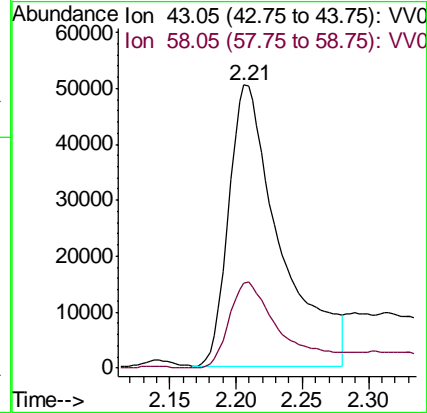
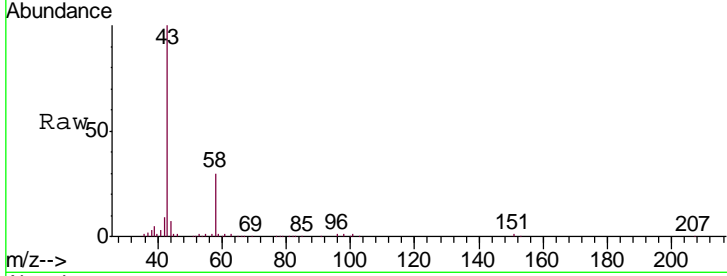




#13  
 Acetone  
 Concen: 228.009 ug/L  
 RT: 2.21 min Scan# 347  
 Delta R.T. -0.01 min  
 Lab File: VV007600.D  
 Acq: 18 Sep 2018 13:02

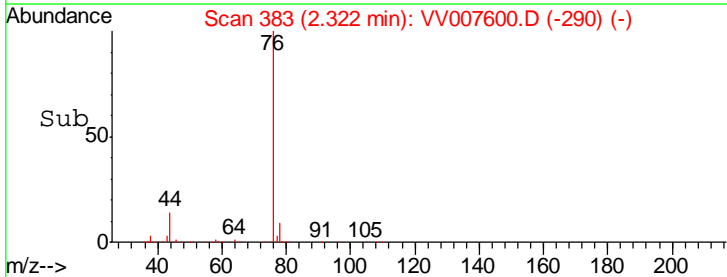
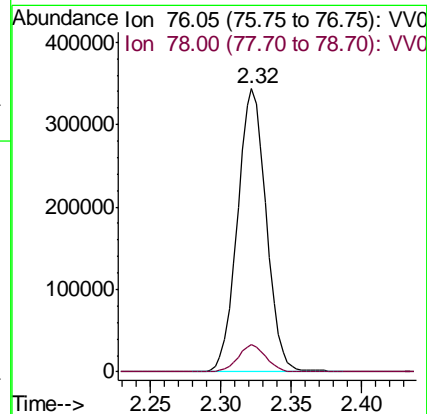
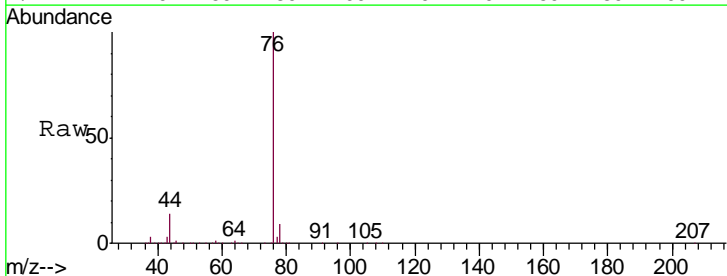
Instrument : MSVOA\_V  
 ClientSampleId : VSTD02070

Tgt Ion	Resp	Lower	Upper
43	135556		
58	32.4	0.0	57.2

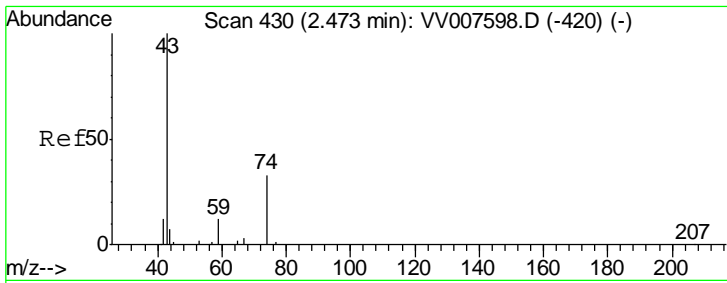


#14  
 Carbon disulfide  
 Concen: 25.698 ug/L  
 RT: 2.32 min Scan# 383  
 Delta R.T. -0.00 min  
 Lab File: VV007600.D  
 Acq: 18 Sep 2018 13:02

Tgt Ion	Resp	Lower	Upper
76	491108		
78	9.5	7.4	11.0



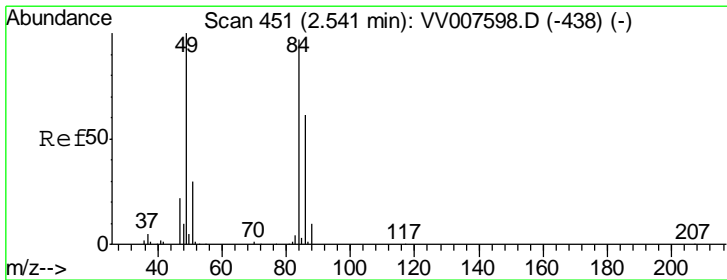
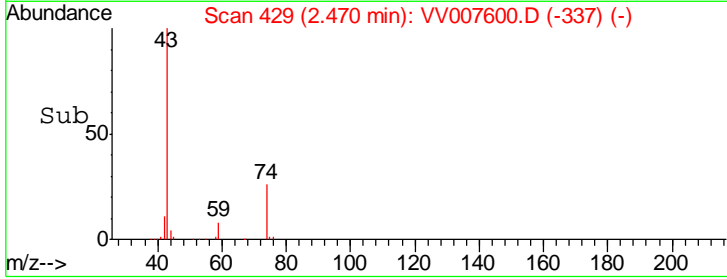
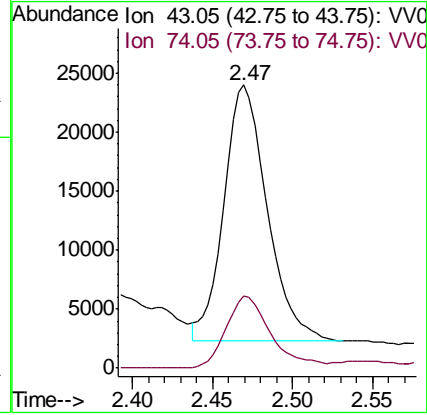
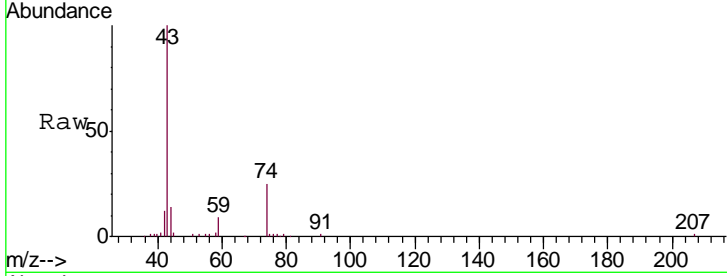




#15  
 Methyl Acetate  
 Concen: 23.504 ug/L  
 RT: 2.47 min Scan# 429  
 Delta R.T. -0.00 min  
 Lab File: VV007600.D  
 Acq: 18 Sep 2018 13:02

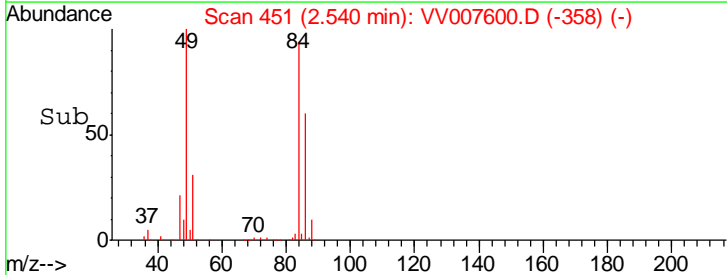
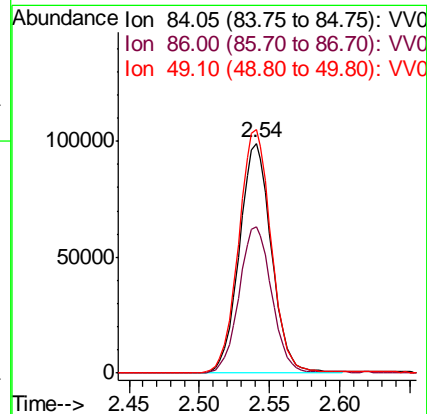
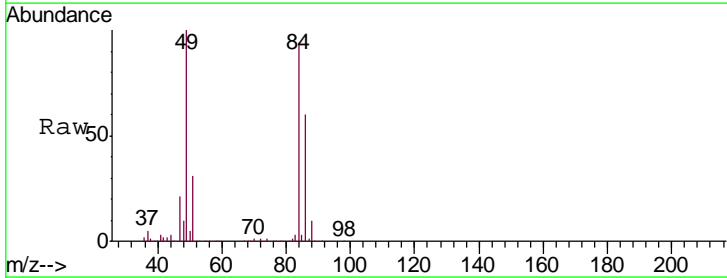
Instrument :  
 MSVOA\_V  
 ClientSampled :  
 VSTD02070

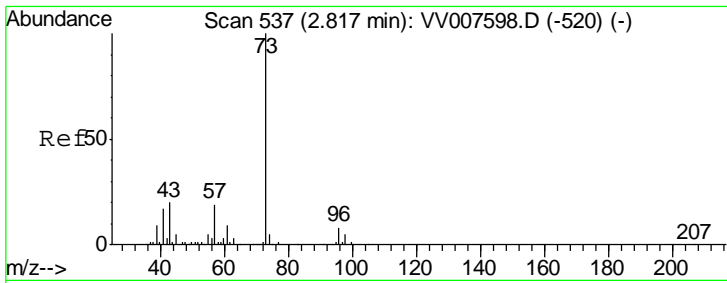
Tgt Ion: 43 Resp: 40106  
 Ion Ratio Lower Upper  
 43 100  
 74 29.2 20.6 31.0



#16  
 Methylene chloride  
 Concen: 22.436 ug/L  
 RT: 2.54 min Scan# 451  
 Delta R.T. -0.00 min  
 Lab File: VV007600.D  
 Acq: 18 Sep 2018 13:02

Tgt Ion: 84 Resp: 158441  
 Ion Ratio Lower Upper  
 84 100  
 86 63.8 44.4 82.4  
 49 105.9 72.3 134.3

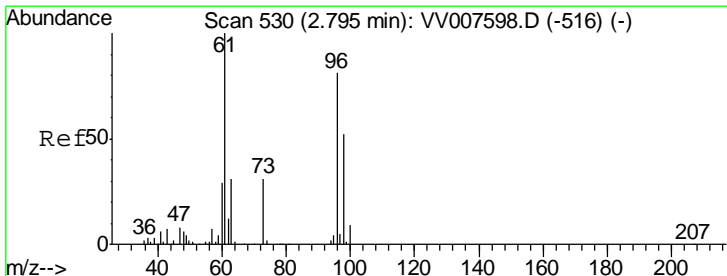
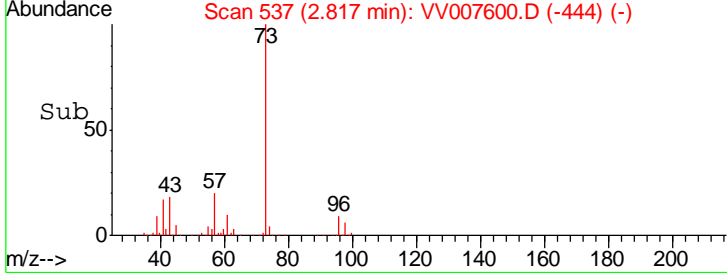
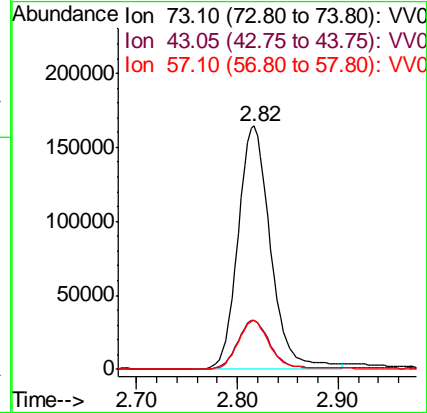
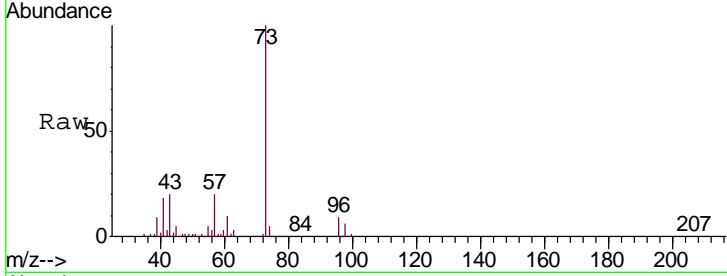




#17  
 Methyl tert-butyl Ether  
 Concen: 24.001 ug/L  
 RT: 2.82 min Scan# 537  
 Delta R.T. -0.00 min  
 Lab File: VV007600.D  
 Acq: 18 Sep 2018 13:02

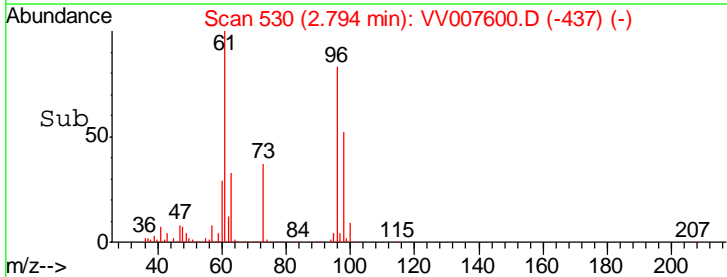
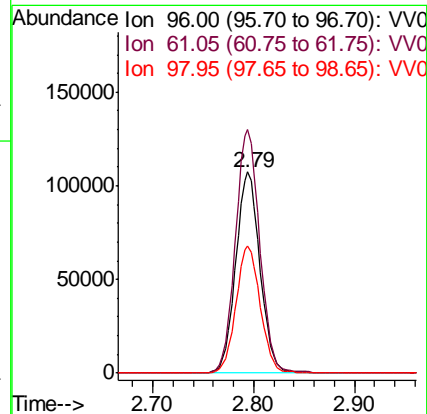
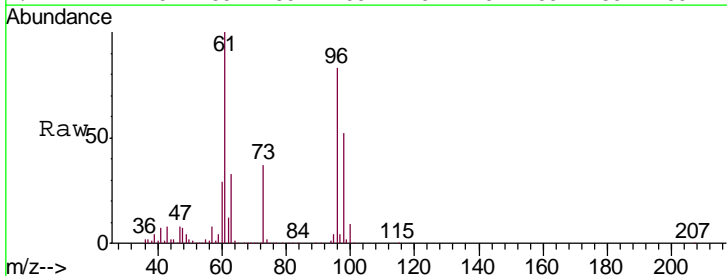
Instrument :  
 MSVOA\_V  
 ClientSampled :  
 VSTD02070

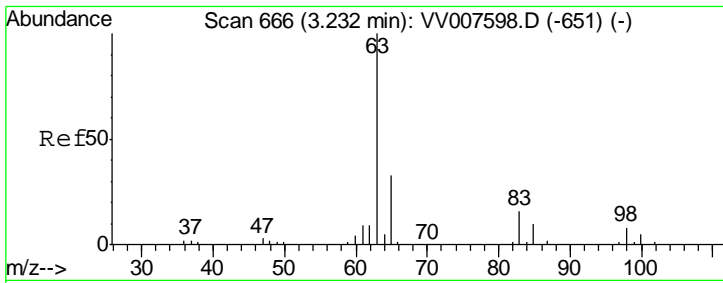
Tgt Ion	Resp	Lower	Upper
73	369388		
43	19.9	16.2	24.2
57	19.8	16.4	24.6



#18  
 trans-1,2-Dichloroethene  
 Concen: 25.419 ug/L  
 RT: 2.79 min Scan# 530  
 Delta R.T. -0.00 min  
 Lab File: VV007600.D  
 Acq: 18 Sep 2018 13:02

Tgt Ion	Resp	Lower	Upper
96	180120		
61	121.0	86.0	159.6
98	63.4	44.9	83.3



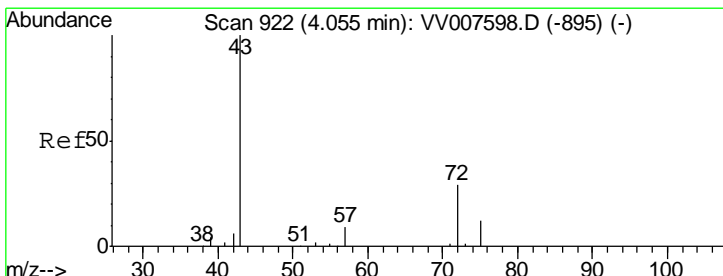
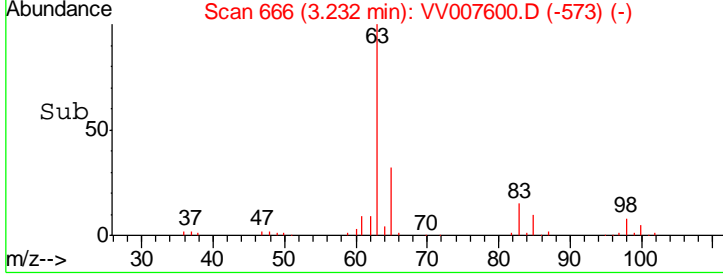
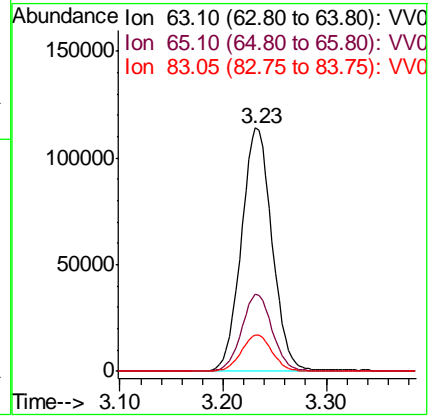
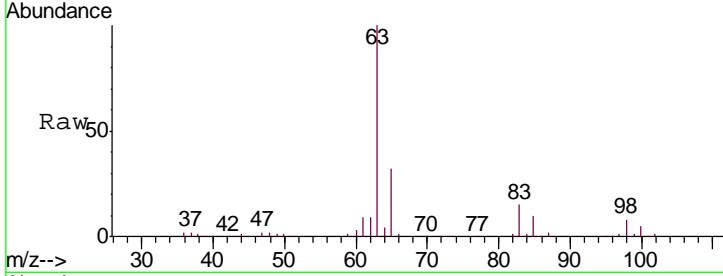


#19  
 1,1-Dichloroethane  
 Concen: 23.245 ug/L  
 RT: 3.23 min Scan# 666  
 Delta R.T. -0.00 min  
 Lab File: VV007600.D  
 Acq: 18 Sep 2018 13:02

Instrument :  
 MSVOA\_V  
 ClientSampled :  
 VSTD02070

Tgt Ion: 63 Resp: 236770

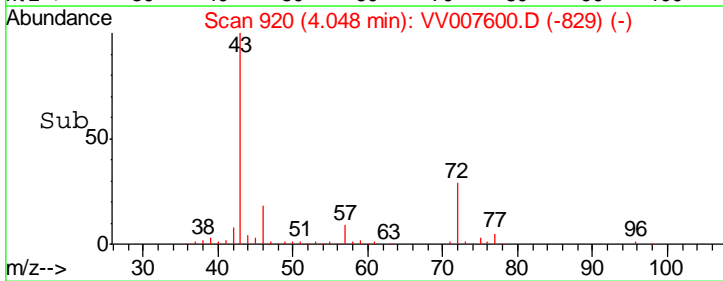
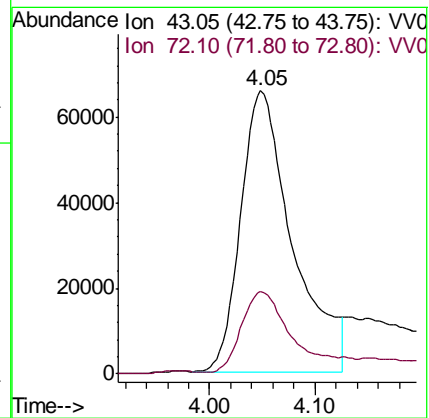
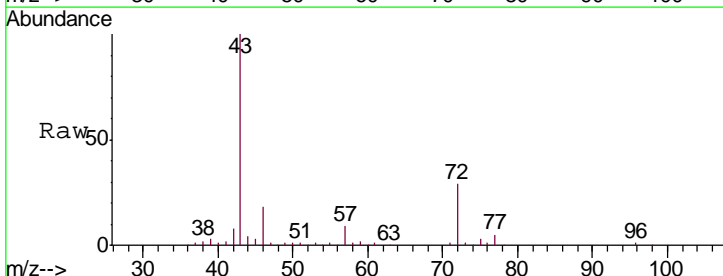
Ion	Ratio	Lower	Upper
63	100		
65	31.6	23.0	42.8
83	15.0	11.3	20.9

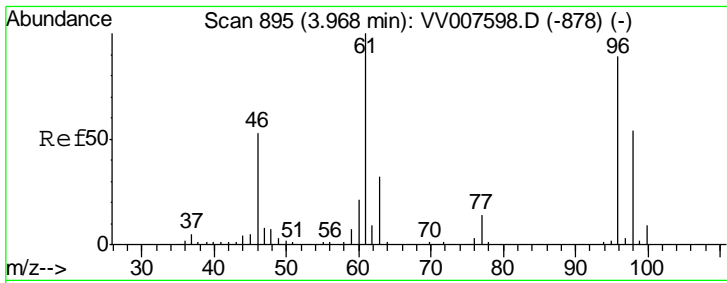


#21  
 2-Butanone  
 Concen: 227.660 ug/L  
 RT: 4.05 min Scan# 920  
 Delta R.T. -0.01 min  
 Lab File: VV007600.D  
 Acq: 18 Sep 2018 13:02

Tgt Ion: 43 Resp: 223808

Ion	Ratio	Lower	Upper
43	100		
72	28.0	13.4	40.2

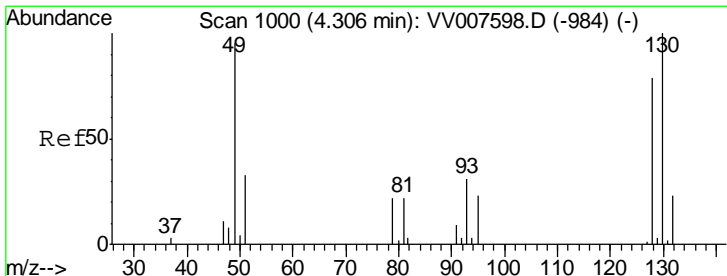
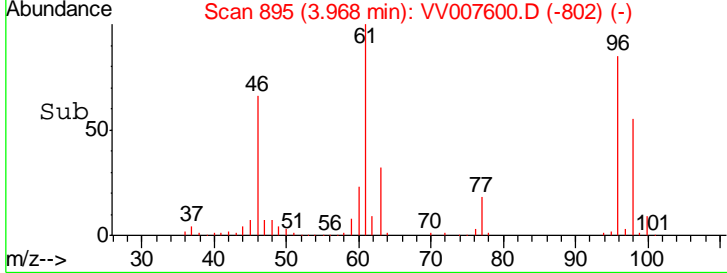
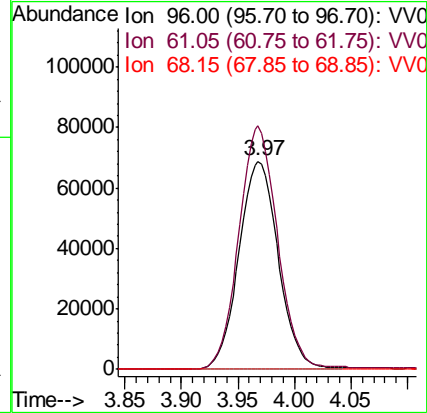
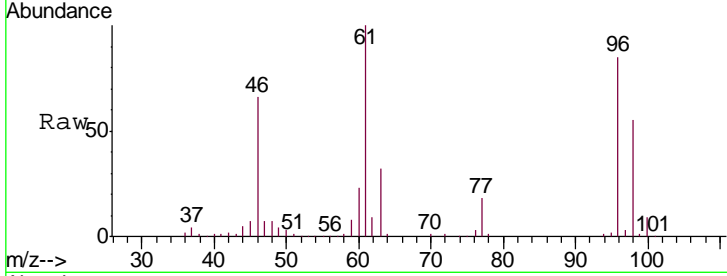




#22  
 cis-1,2-Dichloroethene  
 Concen: 24.160 ug/L  
 RT: 3.97 min Scan# 895  
 Delta R.T. -0.00 min  
 Lab File: VV007600.D  
 Acq: 18 Sep 2018 13:02

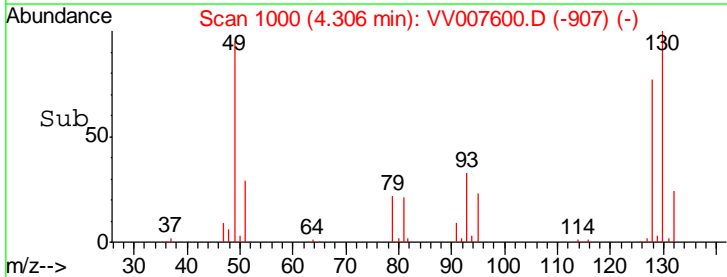
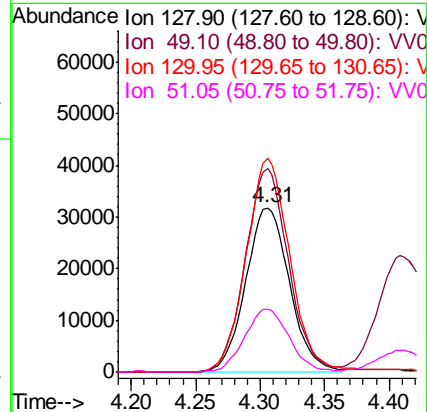
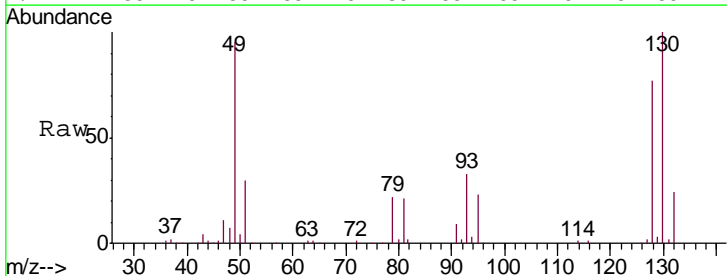
Instrument : MSVOA\_V  
 ClientSampled : VSTD02070

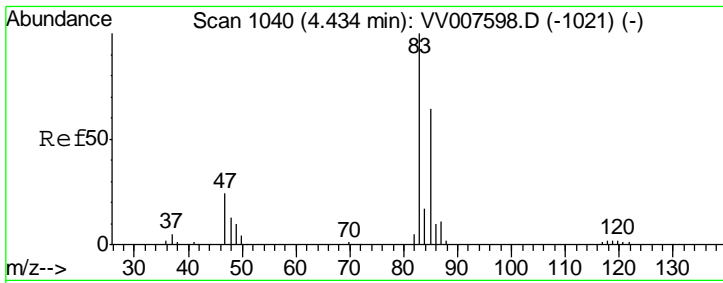
Tgt Ion	Resp	Lower	Upper
96	166808		
61	117.0	78.4	145.6
68	0.0	0.0	0.0



#23  
 Bromochloromethane  
 Concen: 24.805 ug/L  
 RT: 4.31 min Scan# 1000  
 Delta R.T. -0.00 min  
 Lab File: VV007600.D  
 Acq: 18 Sep 2018 13:02

Tgt Ion	Resp	Lower	Upper
128	75315		
49	123.9	84.1	156.3
130	129.9	88.9	165.1
51	38.3	33.6	50.4

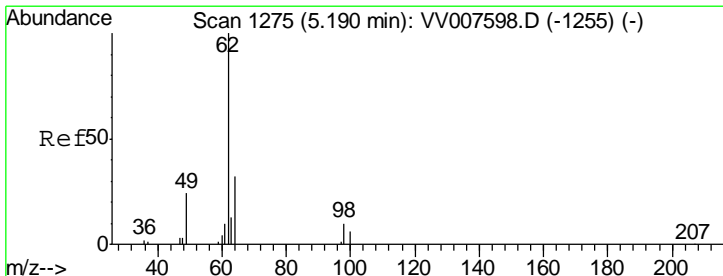
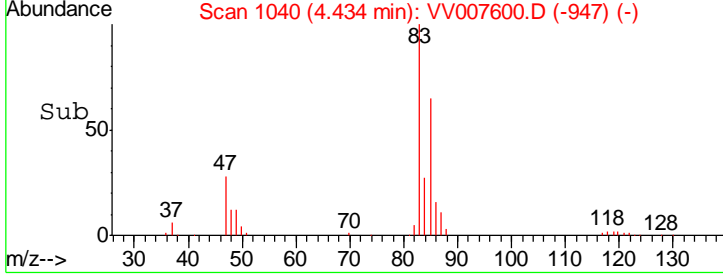
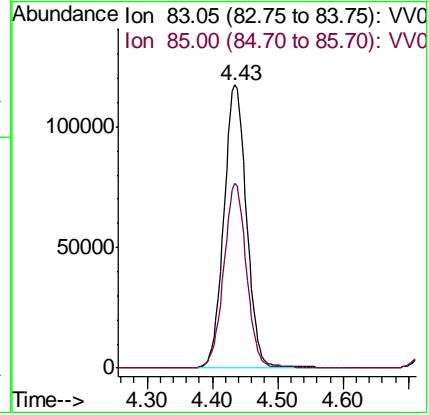
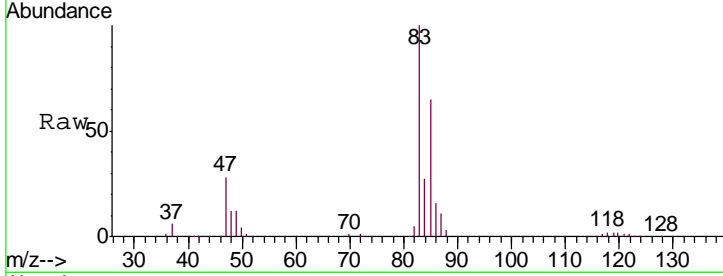




#25  
 Chloroform  
 Concen: 24.363 ug/L  
 RT: 4.43 min Scan# 1040  
 Delta R.T. -0.00 min  
 Lab File: VV007600.D  
 Acq: 18 Sep 2018 13:02

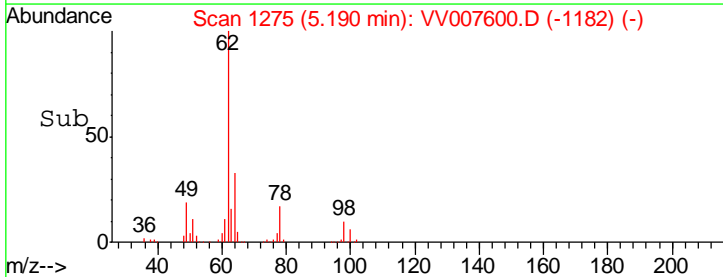
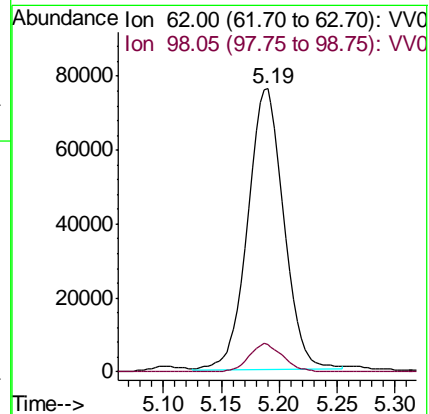
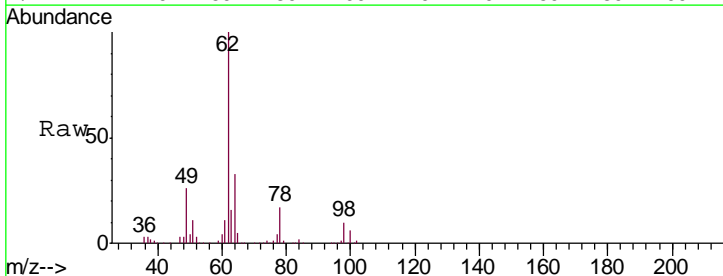
Instrument :  
 MSVOA\_V  
 ClientSampled :  
 VSTD02070

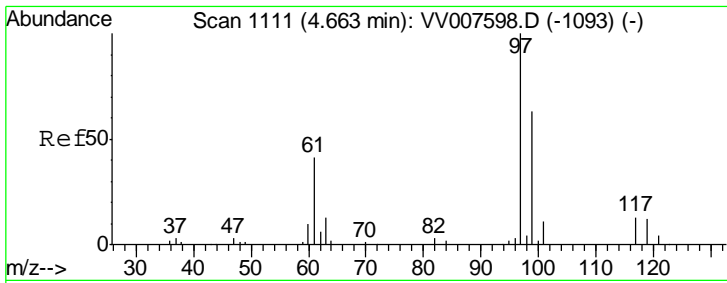
Tgt Ion	Resp	Lower	Upper
83	100		
85	65.1	44.5	82.7



#27  
 1,2-Dichloroethane  
 Concen: 24.813 ug/L  
 RT: 5.19 min Scan# 1275  
 Delta R.T. -0.00 min  
 Lab File: VV007600.D  
 Acq: 18 Sep 2018 13:02

Tgt Ion	Resp	Lower	Upper
62	100		
98	9.8	7.6	11.4

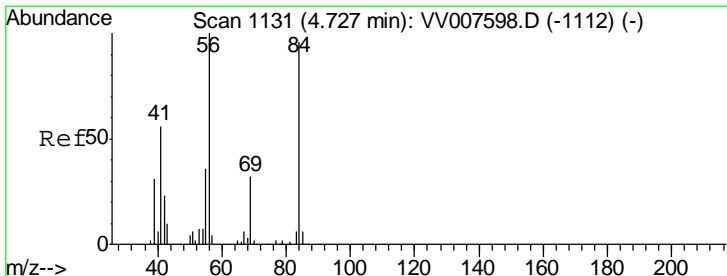
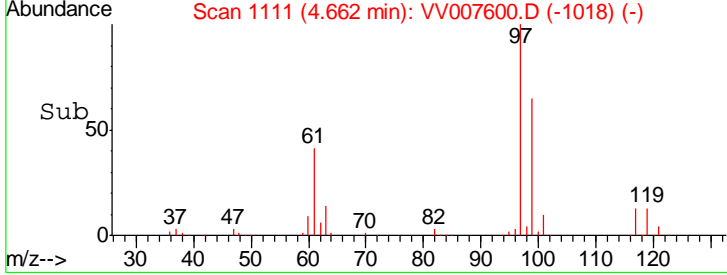
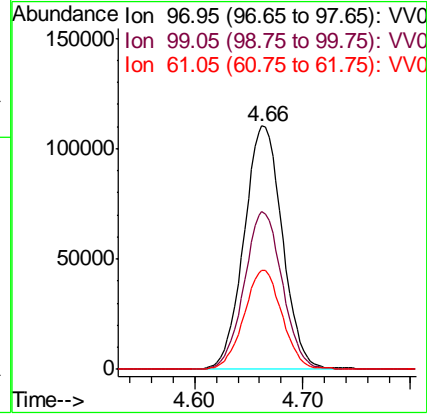
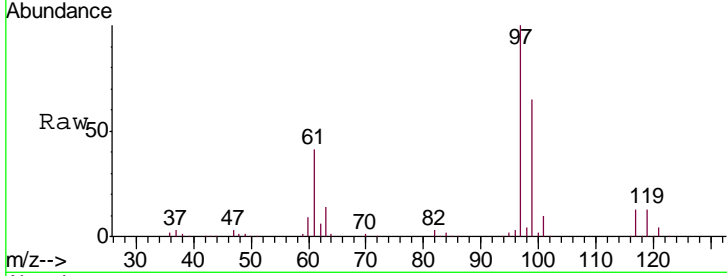




#29  
 1,1,1-Trichloroethane  
 Concen: 23.403 ug/L  
 RT: 4.66 min Scan# 1111  
 Delta R.T. -0.00 min  
 Lab File: VV007600.D  
 Acq: 18 Sep 2018 13:02

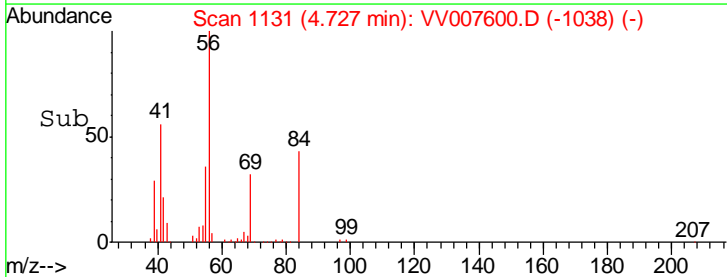
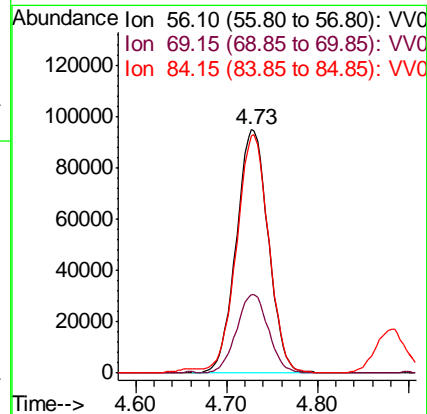
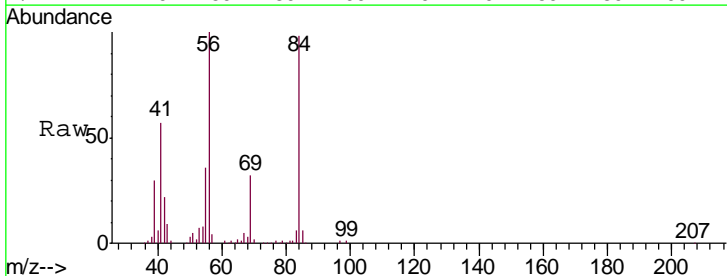
Instrument : MSVOA\_V  
 ClientSampled : VSTD02070

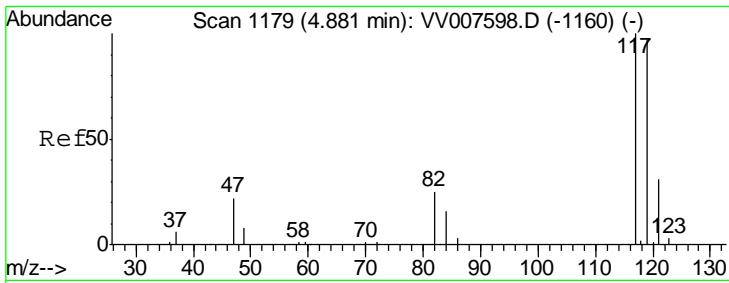
Tgt Ion	Resp	Lower	Upper
97	272800		
99	64.5	51.4	77.0
61	40.6	32.9	49.3



#30  
 Cyclohexane  
 Concen: 22.982 ug/L  
 RT: 4.73 min Scan# 1131  
 Delta R.T. -0.00 min  
 Lab File: VV007600.D  
 Acq: 18 Sep 2018 13:02

Tgt Ion	Resp	Lower	Upper
56	232753		
69	32.2	26.1	39.1
84	99.4	79.1	118.7

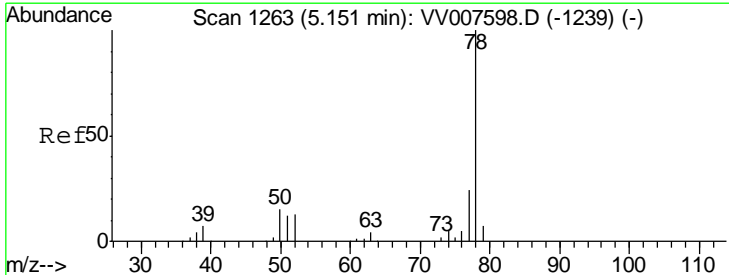
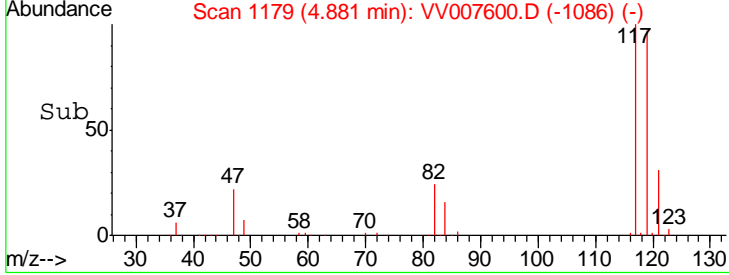
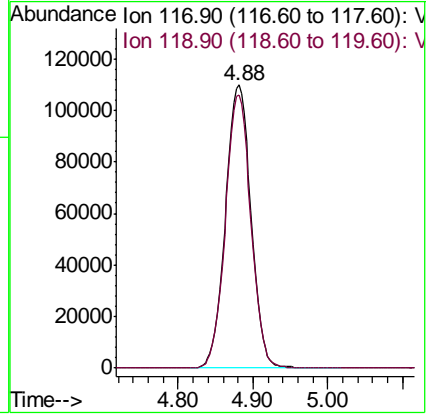
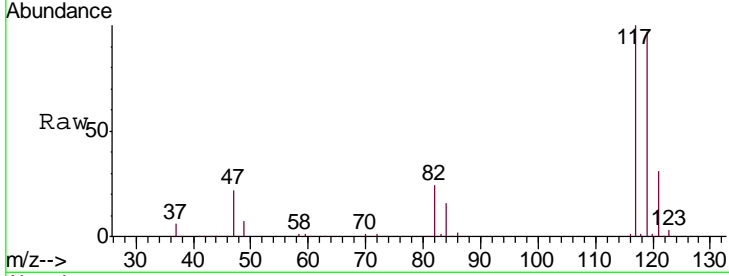




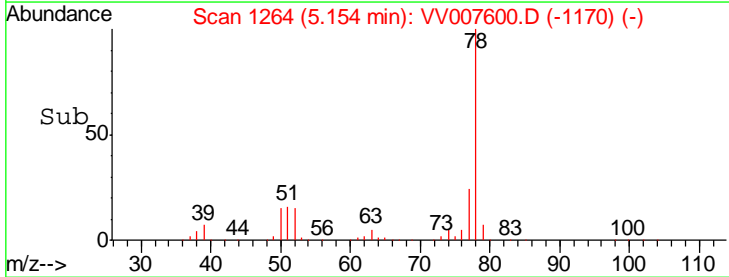
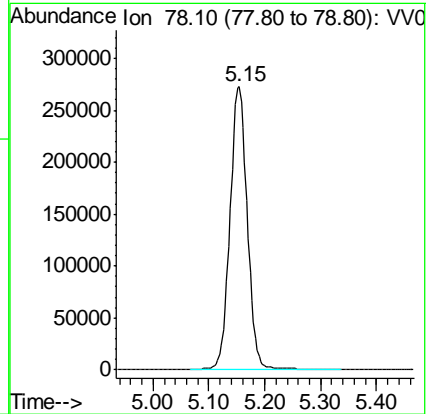
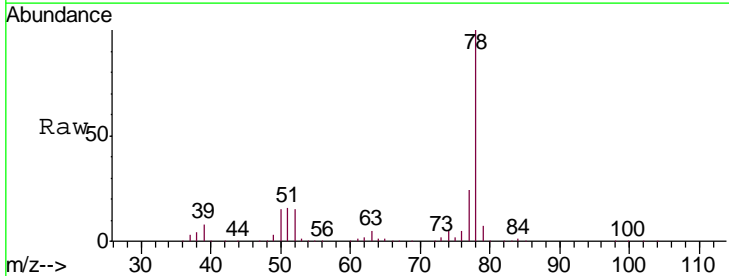
#31  
 Carbon tetrachloride  
 Concen: 23.670 ug/L  
 RT: 4.88 min Scan# 1179  
 Delta R.T. -0.00 min  
 Lab File: VV007600.D  
 Acq: 18 Sep 2018 13:02

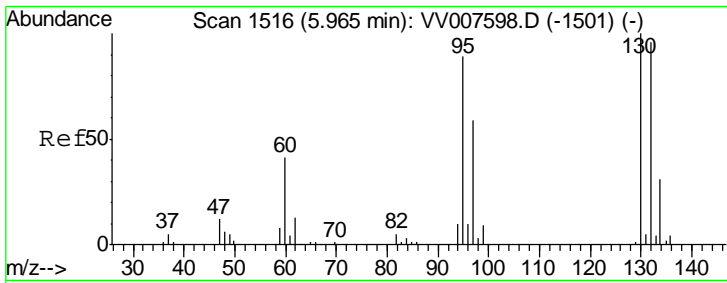
Instrument : MSVOA\_V  
 ClientSampled : VSTD02070

Tgt Ion: 117 Resp: 259070  
 Ion Ratio Lower Upper  
 117 100  
 119 96.1 77.2 115.8



#33  
 Benzene  
 Concen: 23.790 ug/L  
 RT: 5.15 min Scan# 1264  
 Delta R.T. 0.00 min  
 Lab File: VV007600.D  
 Acq: 18 Sep 2018 13:02  
 Tgt Ion: 78 Resp: 590998

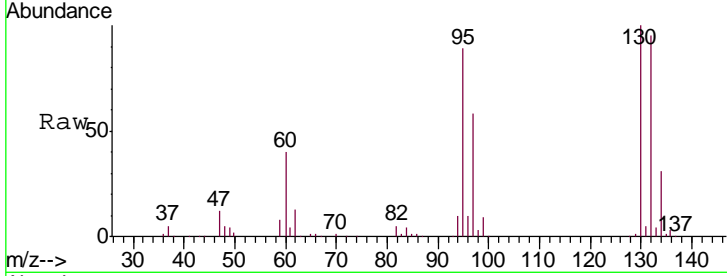




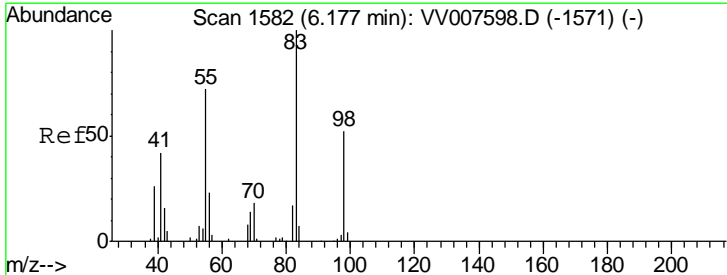
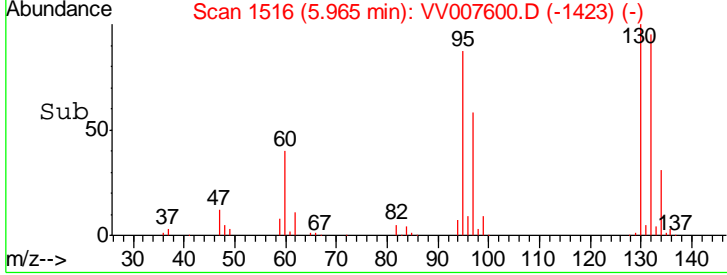
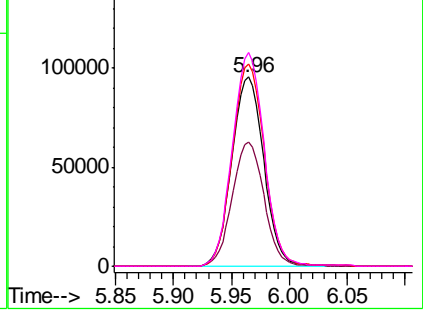
#34  
 Trichloroethene  
 Concen: 23.810 ug/L  
 RT: 5.96 min Scan# 1516  
 Delta R.T. -0.00 min  
 Lab File: VV007600.D  
 Acq: 18 Sep 2018 13:02

Instrument : MSVOA\_V  
 ClientSampled : VSTD02070

Tgt Ion	Resp	Lower	Upper
95	183016		
97	65.6	46.5	86.5
132	107.1	75.5	140.3
130	112.9	78.8	146.4

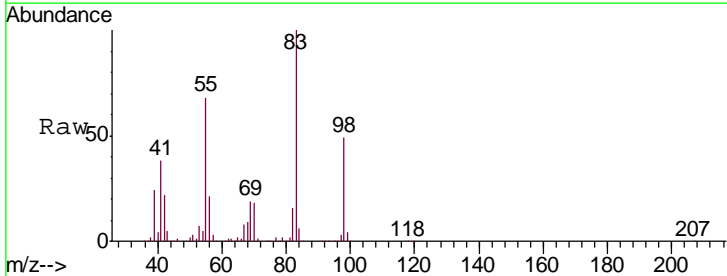


Abundance Ion 95.00 (94.70 to 95.70): VV007600.D (-1423) (-)  
 Ion 96.95 (96.65 to 97.65): VV007600.D (-1423) (-)  
 Ion 131.95 (131.65 to 132.65): VV007600.D (-1423) (-)  
 Ion 129.95 (129.65 to 130.65): VV007600.D (-1423) (-)

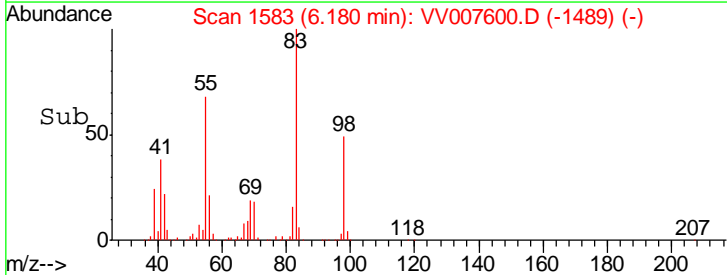
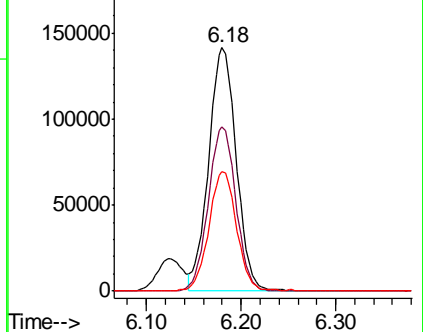


#35  
 Methylcyclohexane  
 Concen: 24.334 ug/L  
 RT: 6.18 min Scan# 1583  
 Delta R.T. 0.00 min  
 Lab File: VV007600.D  
 Acq: 18 Sep 2018 13:02

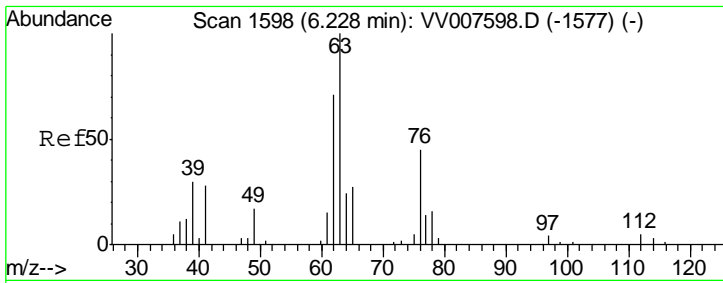
Tgt Ion	Resp	Lower	Upper
83	286678		
55	67.2	54.6	82.0
98	49.6	39.8	59.6



Abundance Ion 83.15 (82.85 to 83.85): VV007600.D (-1489) (-)  
 Ion 55.10 (54.80 to 55.80): VV007600.D (-1489) (-)  
 Ion 98.15 (97.85 to 98.85): VV007600.D (-1489) (-)



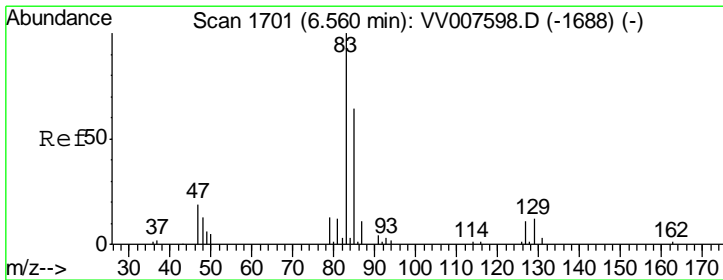
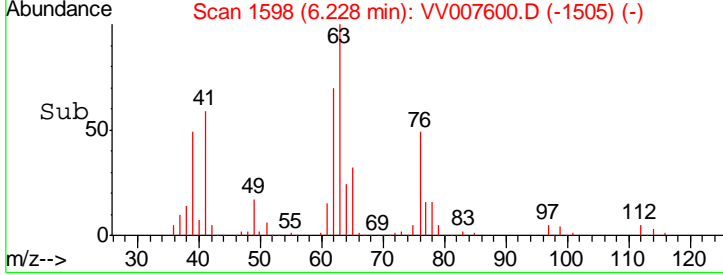
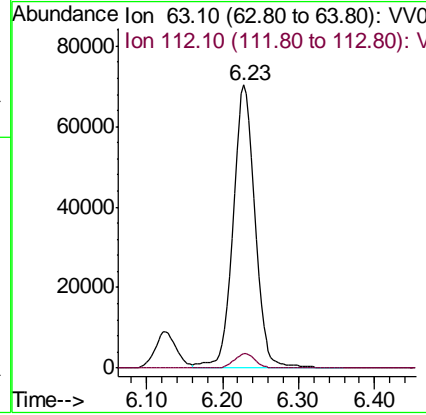
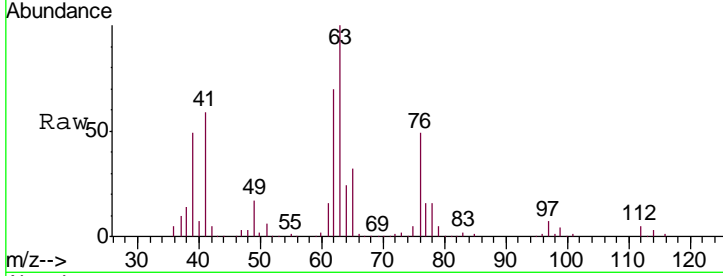




#37  
 1,2-Dichloropropane  
 Concen: 23.485 ug/L  
 RT: 6.23 min Scan# 1598  
 Delta R.T. -0.00 min  
 Lab File: VV007600.D  
 Acq: 18 Sep 2018 13:02

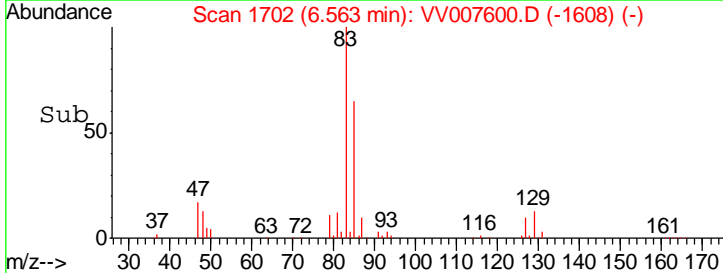
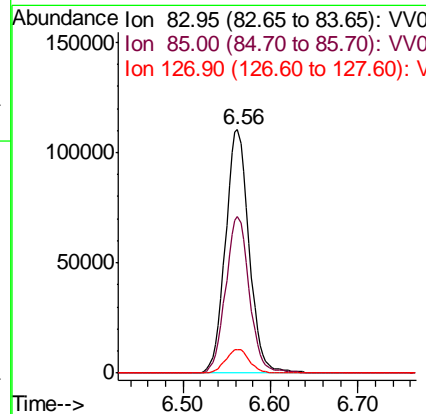
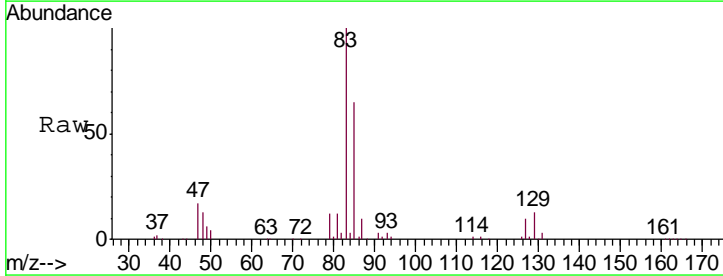
Instrument : MSVOA\_V  
 ClientSampled : VSTD02070

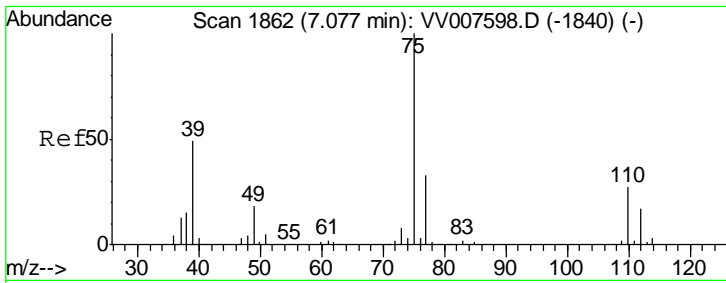
Tgt Ion: 63 Resp: 142398  
 Ion Ratio Lower Upper  
 63 100  
 112 4.8 3.8 5.6



#38  
 Bromodichloromethane  
 Concen: 23.708 ug/L  
 RT: 6.56 min Scan# 1702  
 Delta R.T. 0.00 min  
 Lab File: VV007600.D  
 Acq: 18 Sep 2018 13:02

Tgt Ion: 83 Resp: 207003  
 Ion Ratio Lower Upper  
 83 100  
 85 64.5 44.7 83.1  
 127 9.8 8.6 12.8

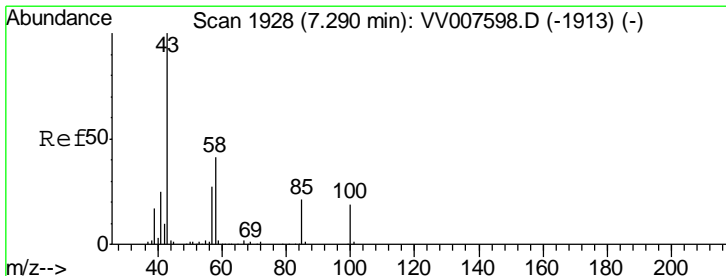
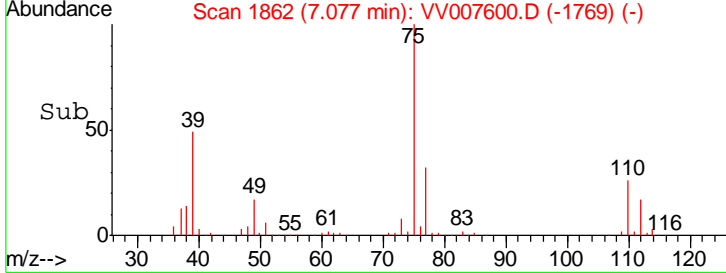
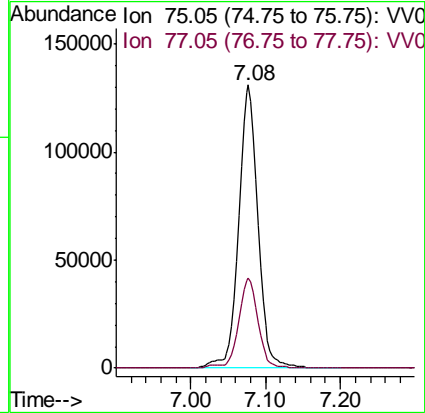
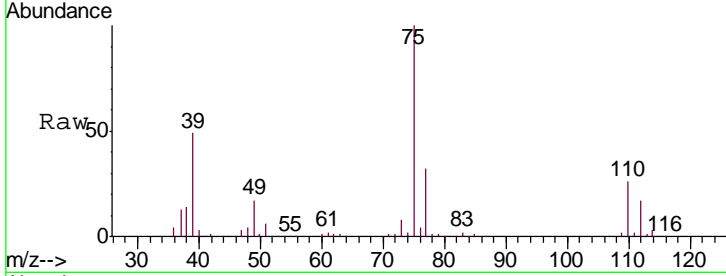




#39  
 cis-1,3-Dichloropropene  
 Concen: 24.516 ug/L  
 RT: 7.08 min Scan# 1862  
 Delta R.T. -0.00 min  
 Lab File: VV007600.D  
 Acq: 18 Sep 2018 13:02

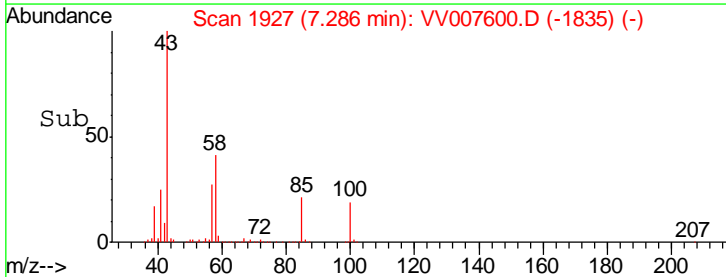
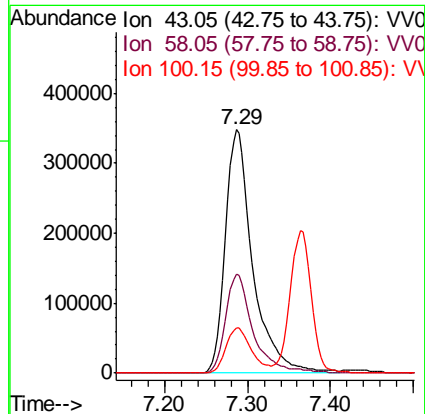
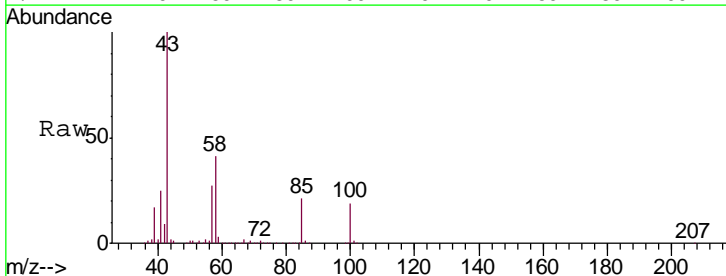
Instrument : MSVOA\_V  
 ClientSampleID : VSTD02070

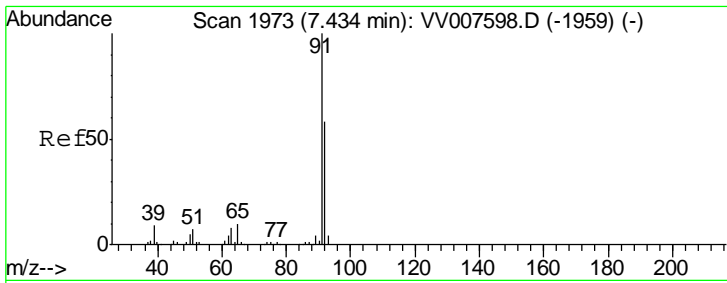
Tgt Ion: 75 Resp: 235533  
 Ion Ratio Lower Upper  
 75 100  
 77 32.0 23.0 42.8



#40  
 4-Methyl-2-pentanone  
 Concen: 239.825 ug/L  
 RT: 7.29 min Scan# 1927  
 Delta R.T. -0.00 min  
 Lab File: VV007600.D  
 Acq: 18 Sep 2018 13:02

Tgt Ion: 43 Resp: 795766  
 Ion Ratio Lower Upper  
 43 100  
 58 41.1 32.6 49.0  
 100 17.4 13.1 19.7

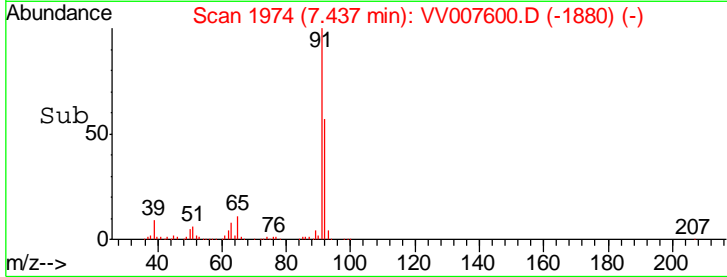
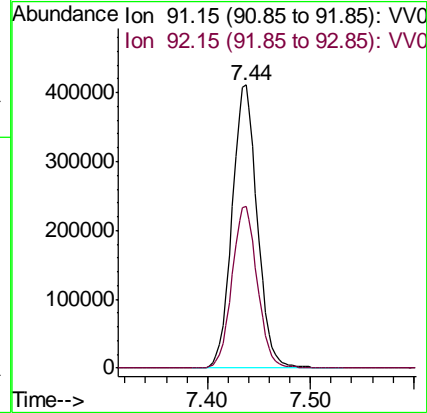
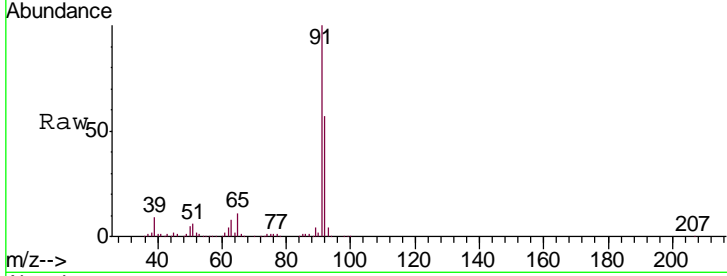




#42  
 Toluene  
 Concen: 24.485 ug/L  
 RT: 7.44 min Scan# 1974  
 Delta R.T. 0.00 min  
 Lab File: VV007600.D  
 Acq: 18 Sep 2018 13:02

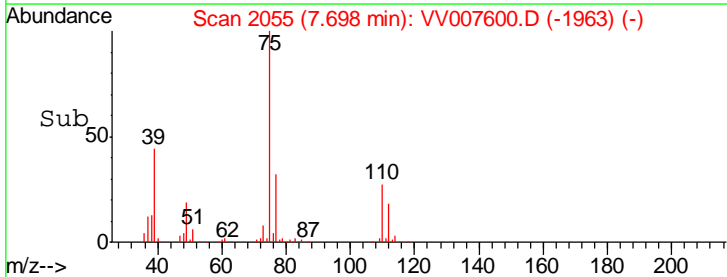
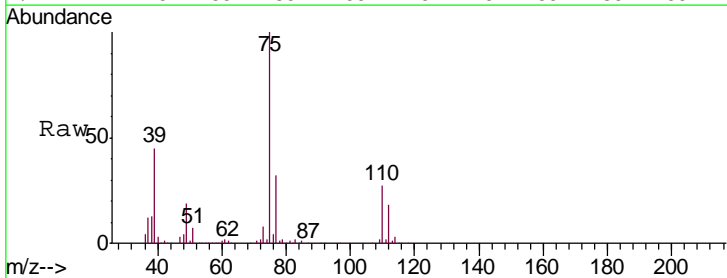
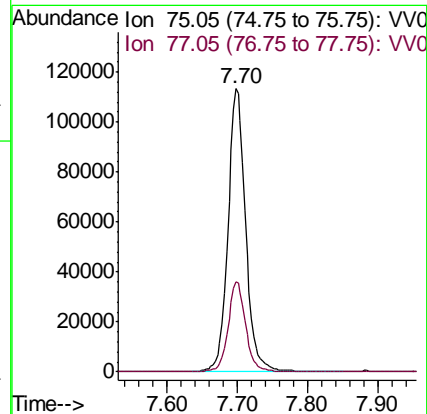
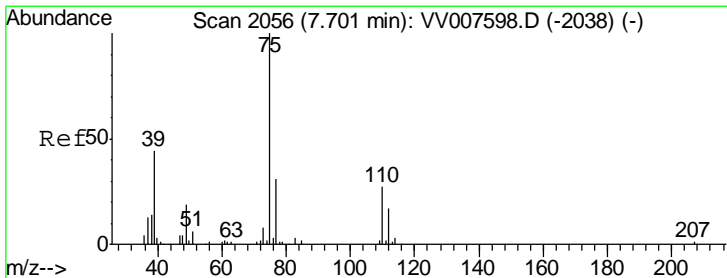
Instrument : MSVOA\_V  
 ClientSampled : VSTD02070

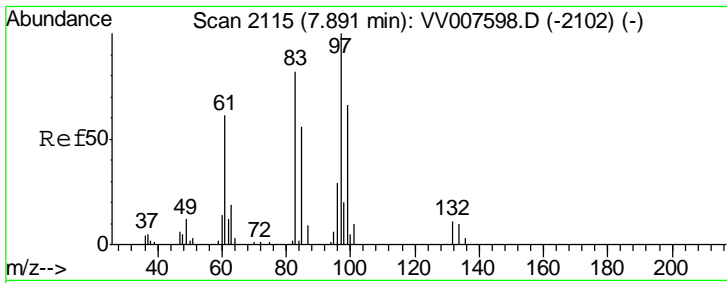
Tgt Ion: 91 Resp: 701199  
 Ion Ratio Lower Upper  
 91 100  
 92 56.9 40.3 74.9



#44  
 trans-1,3-Dichloropropene  
 Concen: 25.194 ug/L  
 RT: 7.70 min Scan# 2055  
 Delta R.T. -0.00 min  
 Lab File: VV007600.D  
 Acq: 18 Sep 2018 13:02

Tgt Ion: 75 Resp: 198709  
 Ion Ratio Lower Upper  
 75 100  
 77 31.8 21.3 39.6

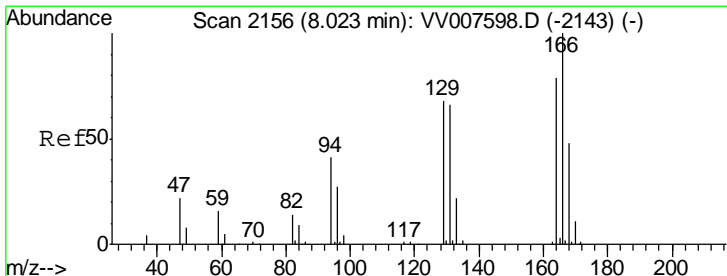
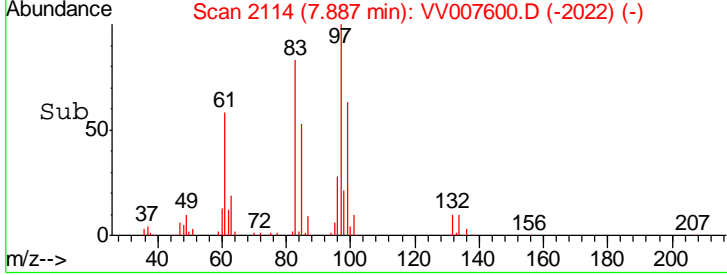
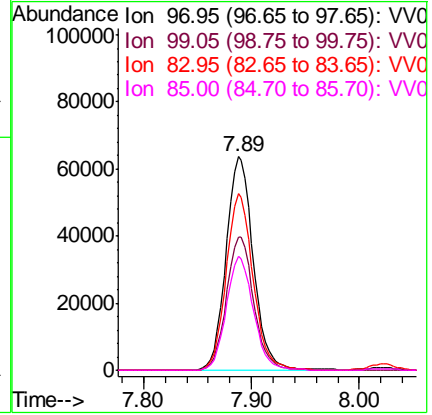
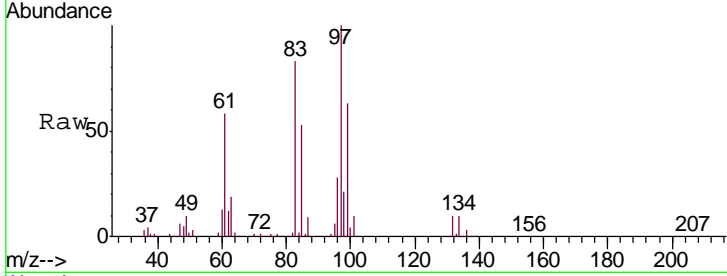




#45  
 1,1,2-Trichloroethane  
 Concen: 24.589 ug/L  
 RT: 7.89 min Scan# 2114  
 Delta R.T. -0.00 min  
 Lab File: VV007600.D  
 Acq: 18 Sep 2018 13:02

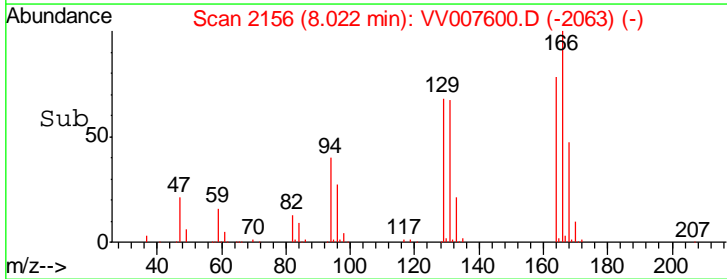
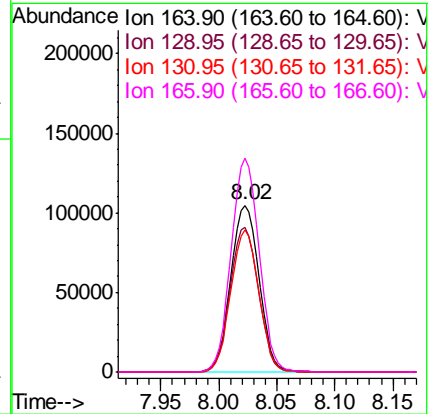
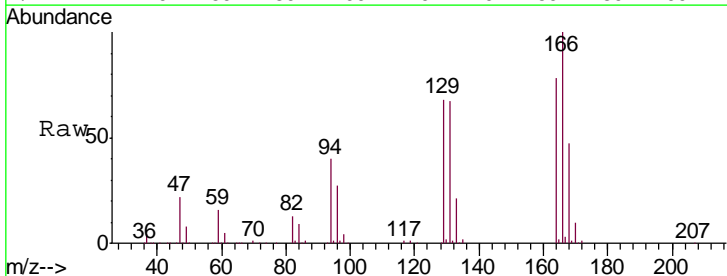
Instrument : MSVOA\_V  
 ClientSampled : VSTD02070

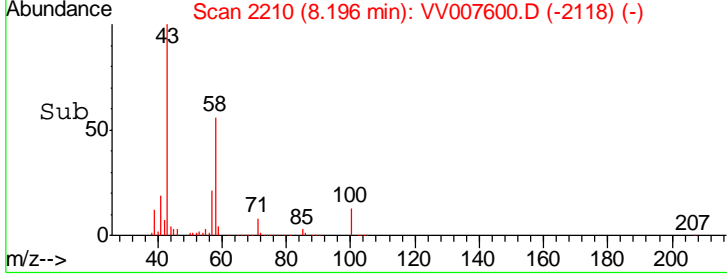
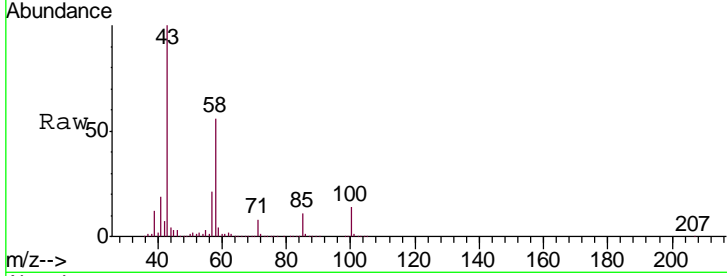
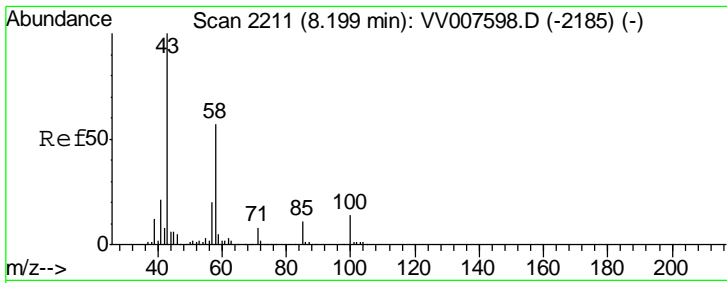
Tgt Ion	Resp	Lower	Upper
97	111970		
99	62.6	45.9	85.3
83	82.8	57.2	106.2
85	53.3	38.9	72.3



#47  
 Tetrachloroethene  
 Concen: 25.494 ug/L  
 RT: 8.02 min Scan# 2156  
 Delta R.T. -0.00 min  
 Lab File: VV007600.D  
 Acq: 18 Sep 2018 13:02

Tgt Ion	Resp	Lower	Upper
164	176343		
129	86.8	60.0	111.4
131	85.2	58.8	109.2
166	128.1	88.5	164.4



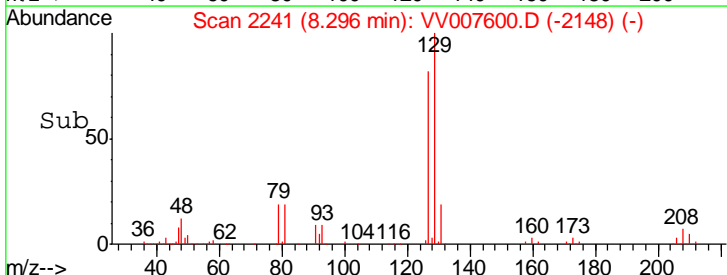
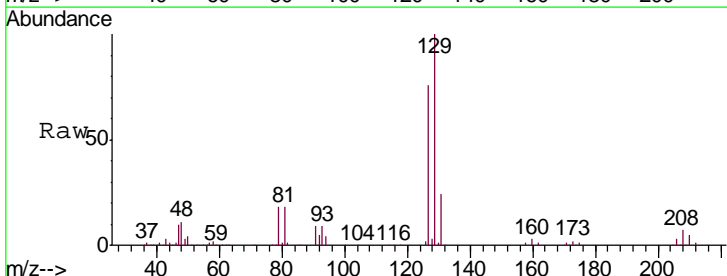
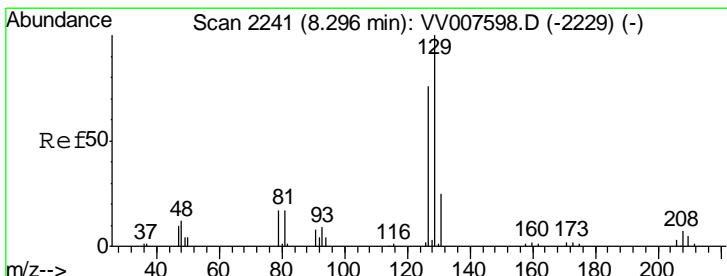
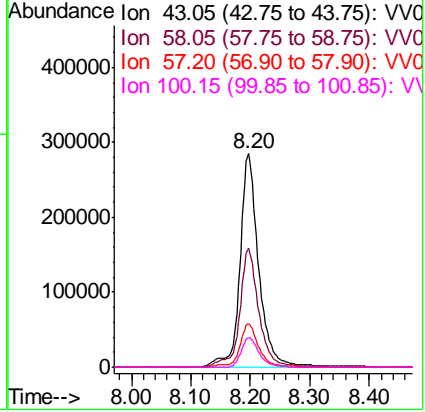


#48  
 2-Hexanone  
 Concen: 244.158 ug/L  
 RT: 8.20 min Scan# 2210  
 Delta R.T. -0.00 min  
 Lab File: VV007600.D  
 Acq: 18 Sep 2018 13:02

Instrument :  
 MSVOA\_V  
 ClientSampled :  
 VSTD02070

Tgt Ion: 43 Resp: 626238

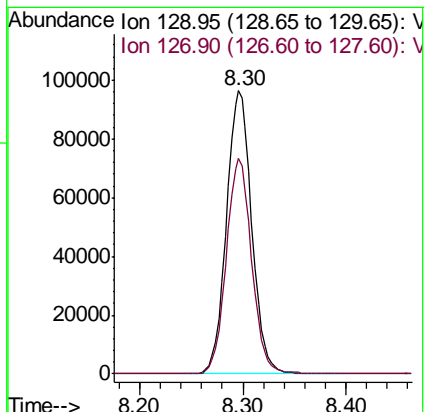
Ion	Ratio	Lower	Upper
43	100		
58	57.0	45.5	68.3
57	20.8	16.3	24.5
100	13.3	10.7	16.1

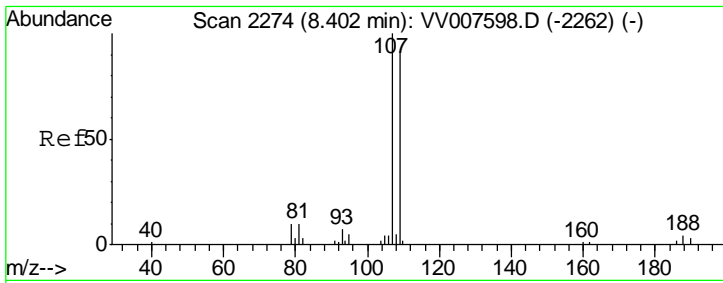


#49  
 Dibromochloromethane  
 Concen: 25.757 ug/L  
 RT: 8.30 min Scan# 2241  
 Delta R.T. -0.00 min  
 Lab File: VV007600.D  
 Acq: 18 Sep 2018 13:02

Tgt Ion: 129 Resp: 164841

Ion	Ratio	Lower	Upper
129	100		
127	76.3	53.3	98.9

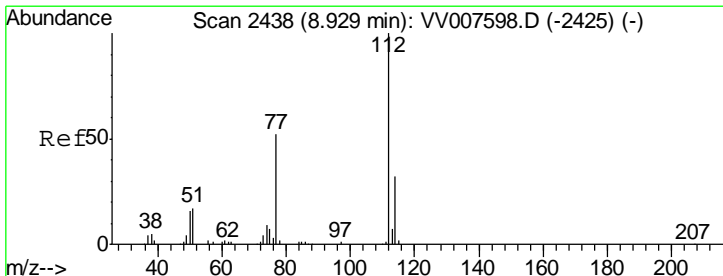
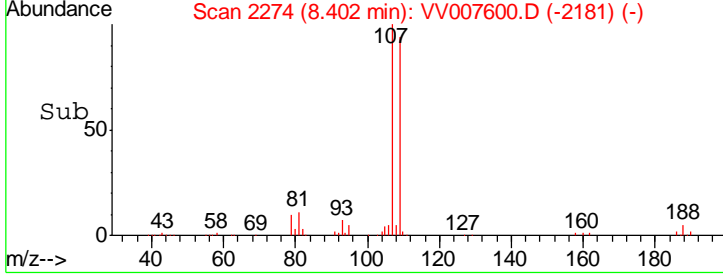
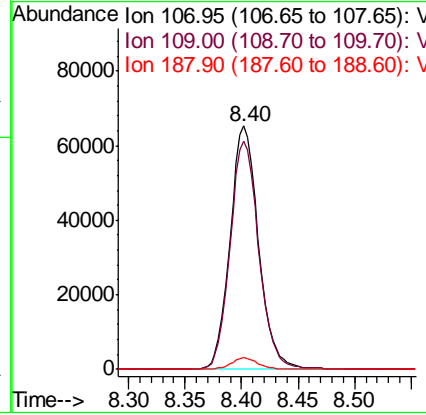
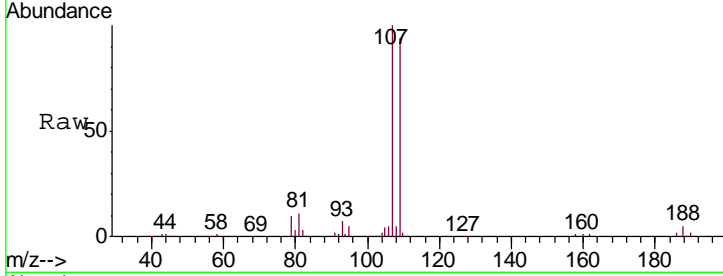




#50  
 1,2-Dibromoethane  
 Concen: 25.895 ug/L  
 RT: 8.40 min Scan# 2274  
 Delta R.T. -0.00 min  
 Lab File: VV007600.D  
 Acq: 18 Sep 2018 13:02

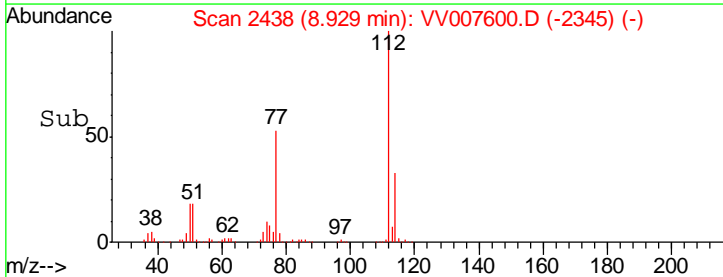
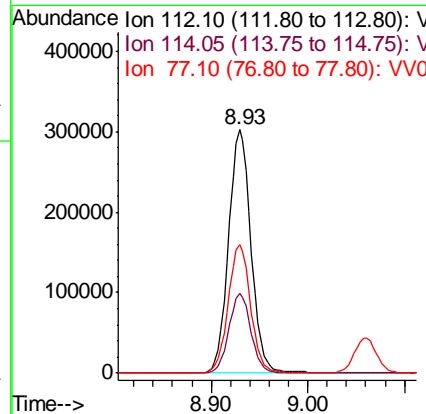
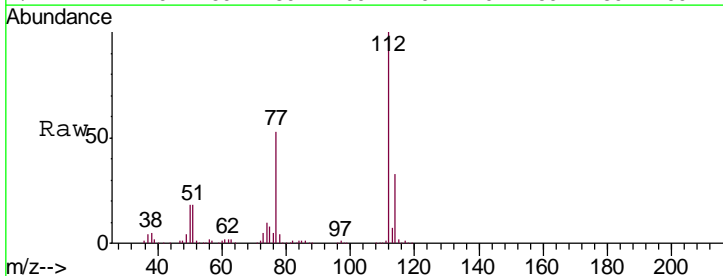
Instrument :  
 MSVOA\_V  
 ClientSampled :  
 VSTD02070

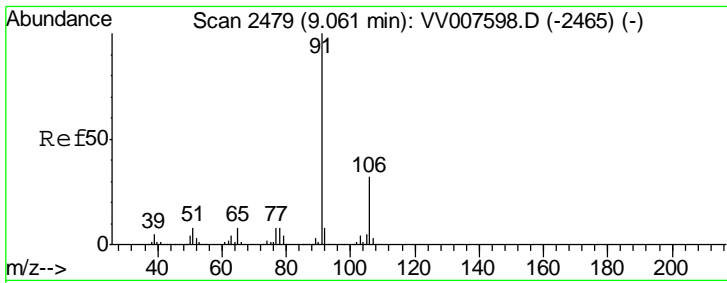
Tgt Ion	Resp	Lower	Upper
107	114497		
109	93.7	63.8	118.6
188	4.7	3.6	5.4



#51  
 Chlorobenzene  
 Concen: 25.211 ug/L  
 RT: 8.93 min Scan# 2438  
 Delta R.T. -0.00 min  
 Lab File: VV007600.D  
 Acq: 18 Sep 2018 13:02

Tgt Ion	Resp	Lower	Upper
112	487166		
114	32.7	22.3	41.5
77	52.9	42.0	63.0

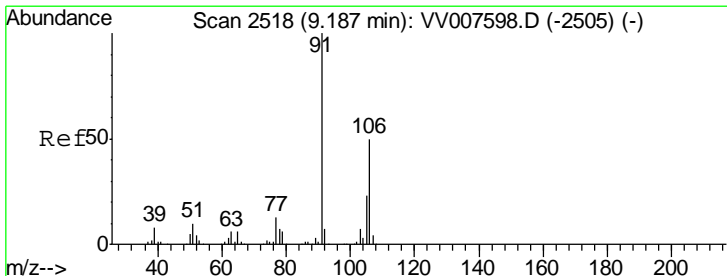
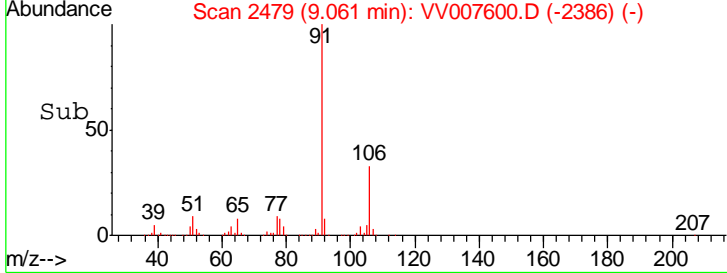
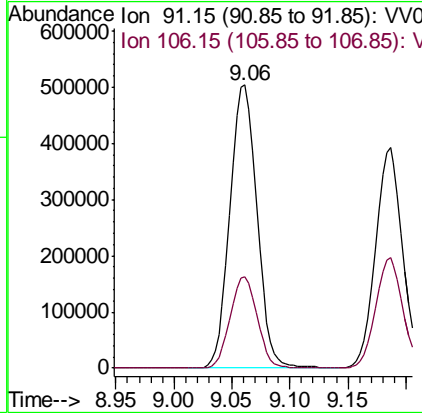
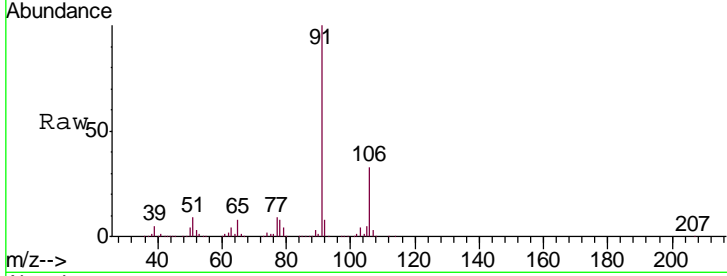




#52  
 Ethylbenzene  
 Concen: 25.338 ug/L  
 RT: 9.06 min Scan# 2479  
 Delta R.T. -0.00 min  
 Lab File: VV007600.D  
 Acq: 18 Sep 2018 13:02

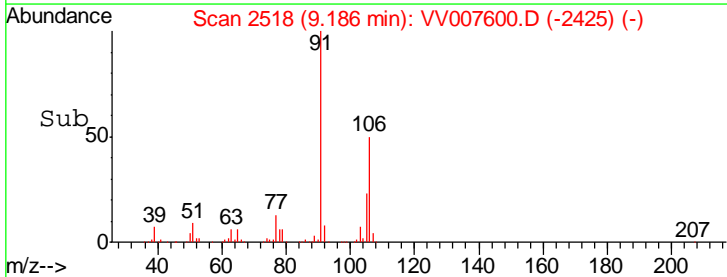
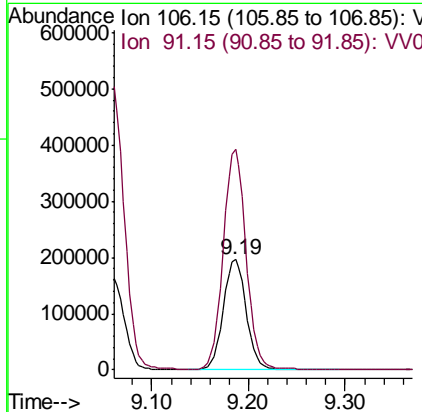
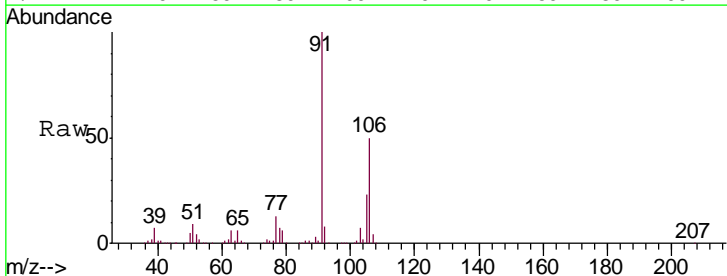
Instrument :  
 MSVOA\_V  
 ClientSampled :  
 VSTD02070

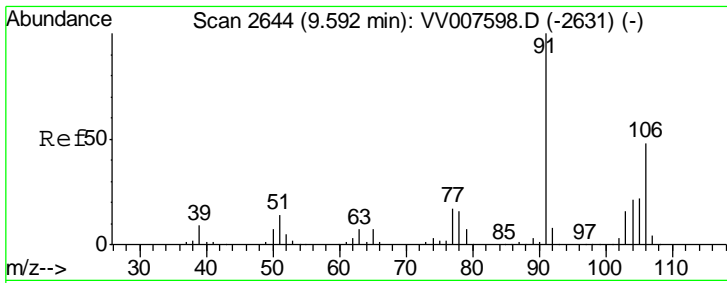
Tgt Ion: 91 Resp: 814208  
 Ion Ratio Lower Upper  
 91 100  
 106 32.5 22.5 41.9



#53  
 m,p-xylene  
 Concen: 25.889 ug/L  
 RT: 9.19 min Scan# 2518  
 Delta R.T. -0.00 min  
 Lab File: VV007600.D  
 Acq: 18 Sep 2018 13:02

Tgt Ion: 106 Resp: 322903  
 Ion Ratio Lower Upper  
 106 100  
 91 199.9 139.4 258.8

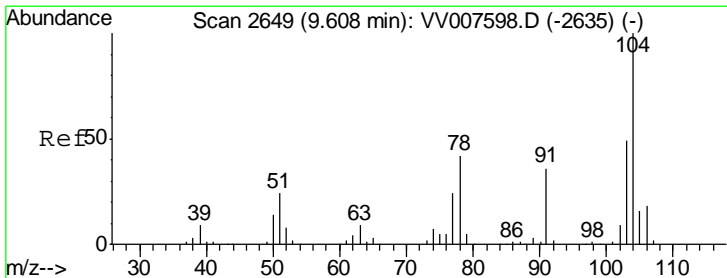
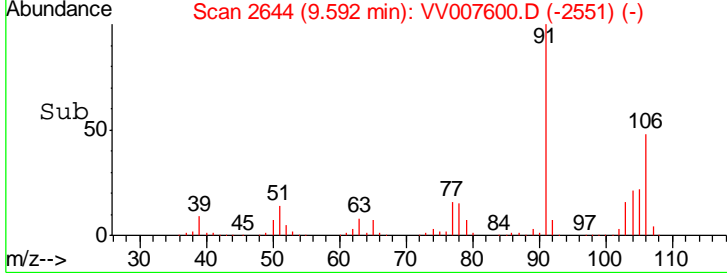
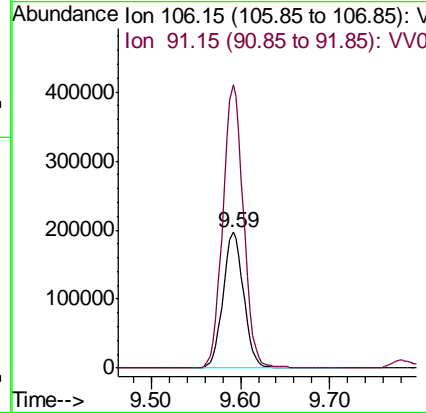
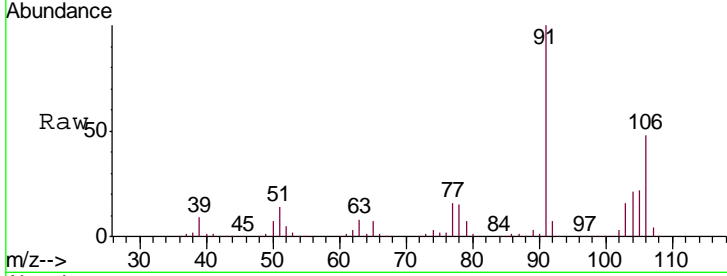




#54  
 o-xylene  
 Concen: 25.886 ug/L  
 RT: 9.59 min Scan# 2644  
 Delta R.T. -0.00 min  
 Lab File: VV007600.D  
 Acq: 18 Sep 2018 13:02

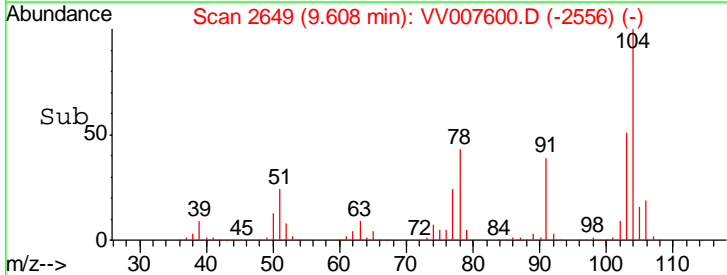
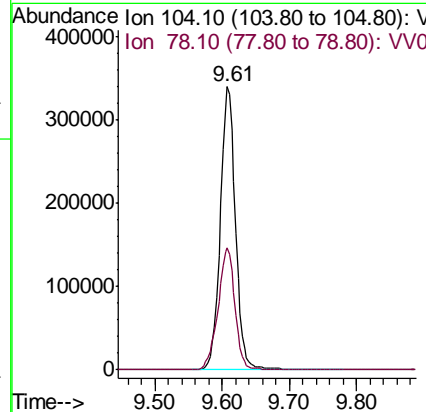
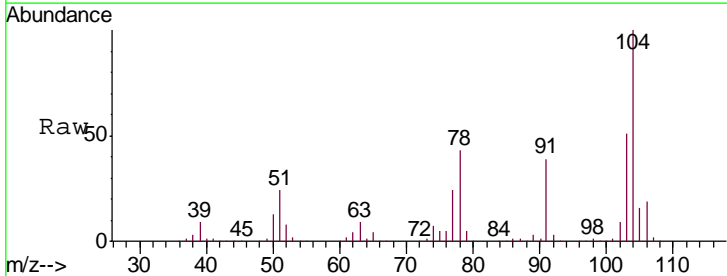
Instrument : MSVOA\_V  
 ClientSampled : VSTD02070

Tgt Ion:106 Resp: 314873  
 Ion Ratio Lower Upper  
 106 100  
 91 208.4 145.9 271.1

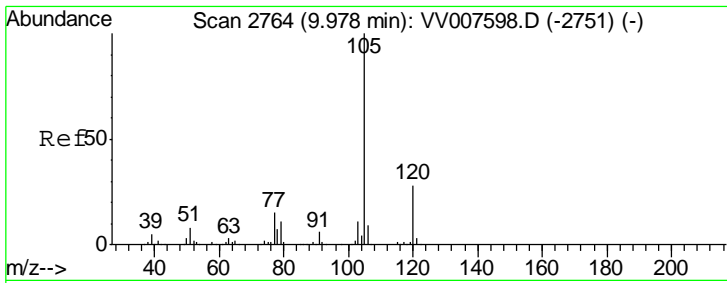


#55  
 Styrene  
 Concen: 27.042 ug/L  
 RT: 9.61 min Scan# 2649  
 Delta R.T. -0.00 min  
 Lab File: VV007600.D  
 Acq: 18 Sep 2018 13:02

Tgt Ion:104 Resp: 538574  
 Ion Ratio Lower Upper  
 104 100  
 78 43.3 29.7 55.1



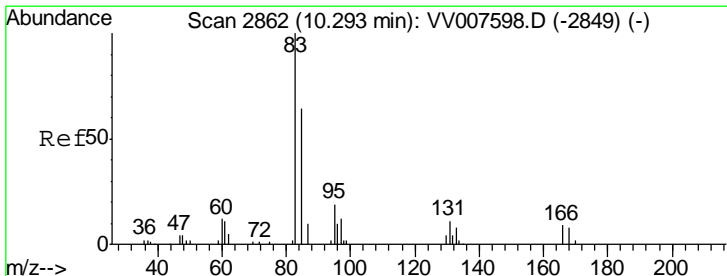
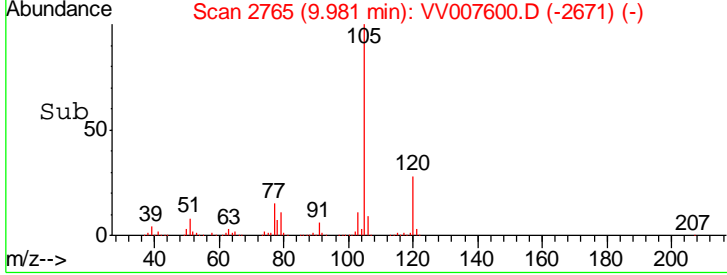
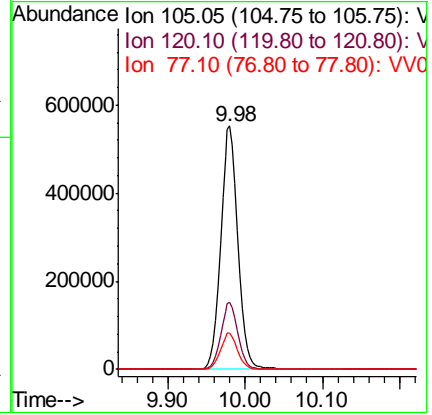
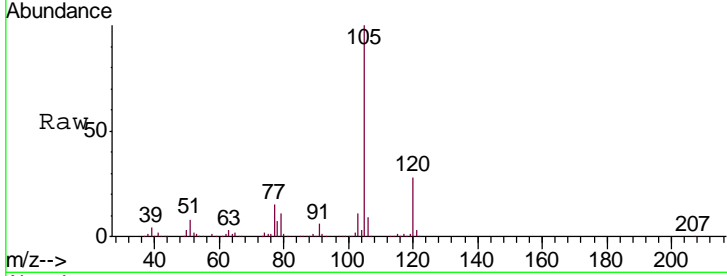




#56  
 Isopropylbenzene  
 Concen: 26.132 ug/L  
 RT: 9.98 min Scan# 2765  
 Delta R.T. 0.00 min  
 Lab File: VV007600.D  
 Acq: 18 Sep 2018 13:02

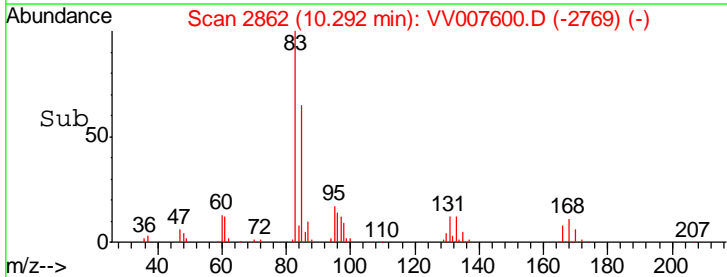
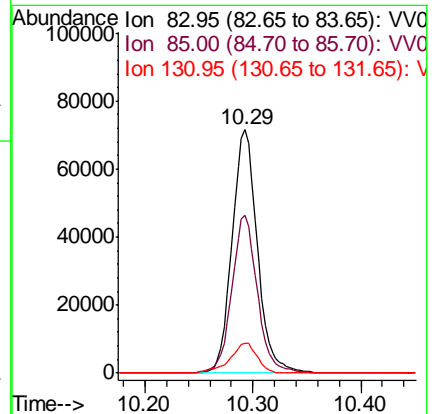
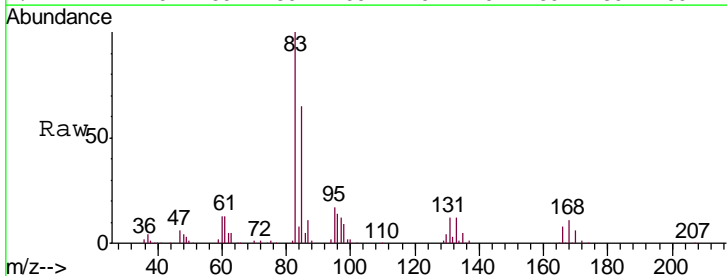
**Instrument :**  
 MSVOA\_V  
**ClientSampled :**  
 VSTD02070

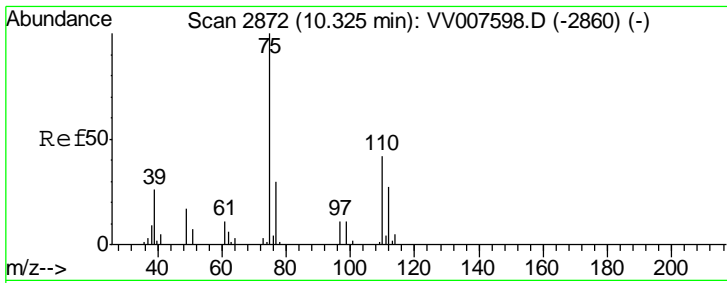
Tgt Ion	Resp	Lower	Upper
105	868809		
120	27.6	22.1	33.1
77	14.8	12.0	18.0



#58  
 1,1,2,2-Tetrachloroethane  
 Concen: 26.852 ug/L  
 RT: 10.29 min Scan# 2862  
 Delta R.T. -0.00 min  
 Lab File: VV007600.D  
 Acq: 18 Sep 2018 13:02

Tgt Ion	Resp	Lower	Upper
83	117517		
85	64.9	44.9	83.5
131	12.4	9.0	13.6

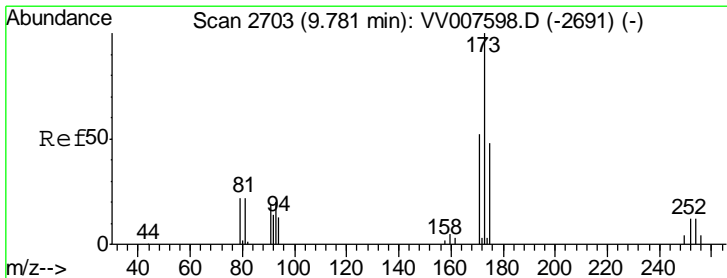
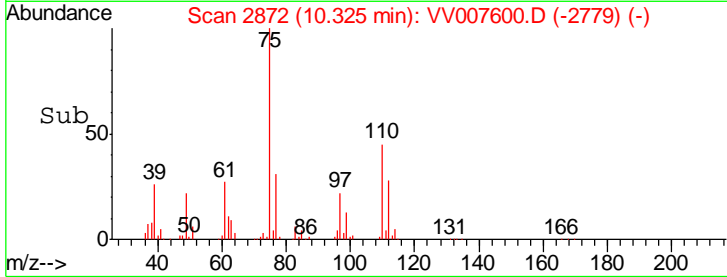
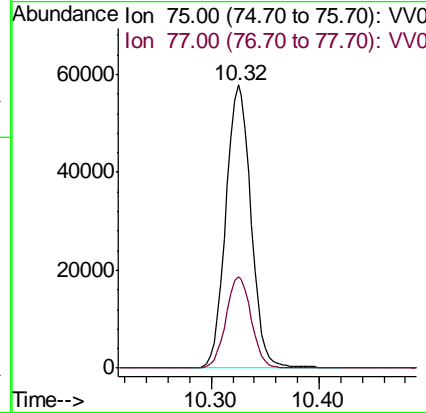
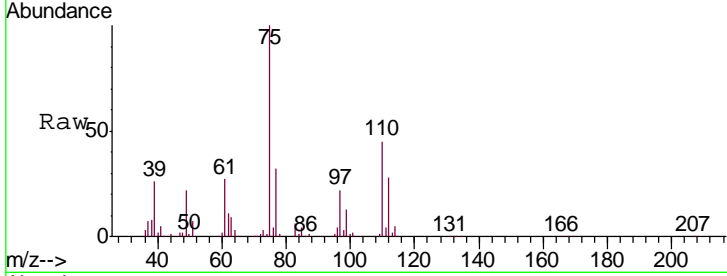




#59  
 1,2,3-Trichloropropane  
 Concen: 25.296 ug/L  
 RT: 10.32 min Scan# 2872  
 Delta R.T. -0.00 min  
 Lab File: VV007600.D  
 Acq: 18 Sep 2018 13:02

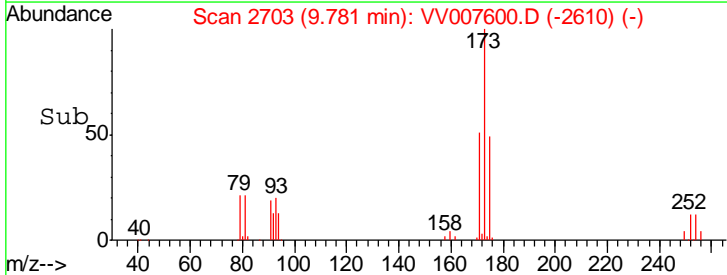
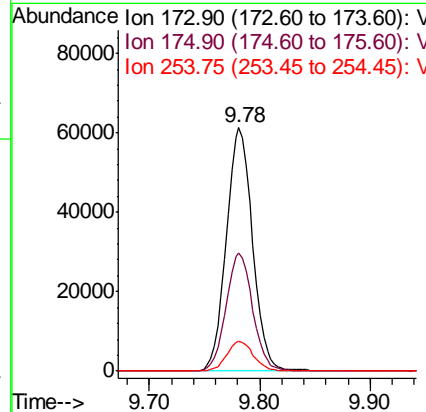
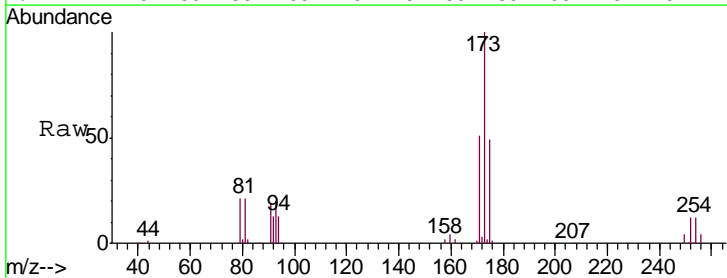
Instrument :  
 MSVOA\_V  
 ClientSampled :  
 VSTD02070

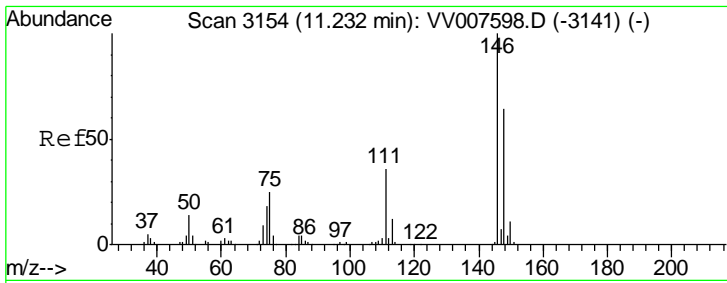
Tgt Ion: 75 Resp: 93863  
 Ion Ratio Lower Upper  
 75 100  
 77 32.3 25.0 37.4



#61  
 Bromoform  
 Concen: 25.266 ug/L  
 RT: 9.78 min Scan# 2703  
 Delta R.T. -0.00 min  
 Lab File: VV007600.D  
 Acq: 18 Sep 2018 13:02

Tgt Ion: 173 Resp: 101016  
 Ion Ratio Lower Upper  
 173 100  
 175 49.2 38.2 57.4  
 254 12.3 8.9 13.3

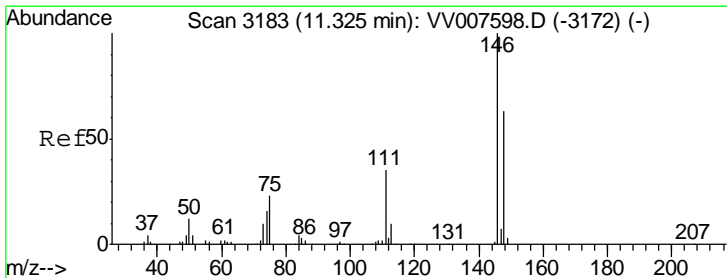
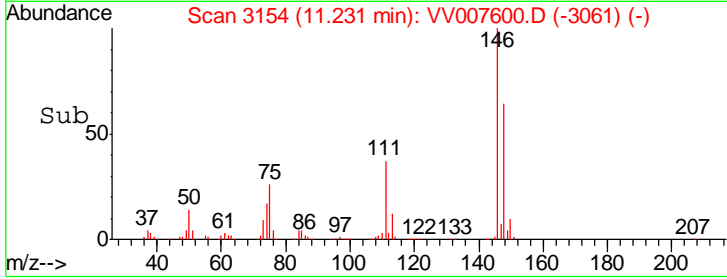
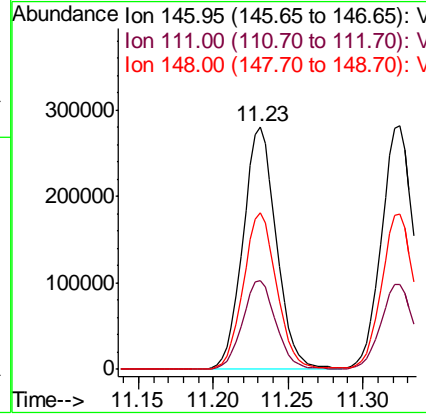
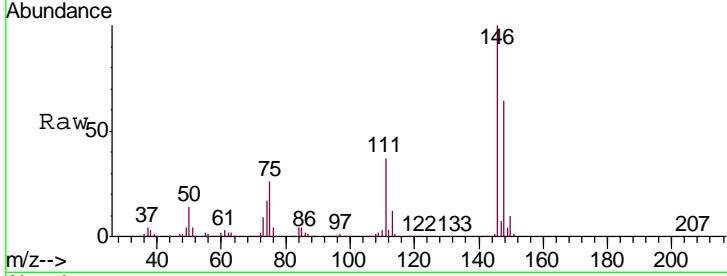




#62  
 1,3-Dichlorobenzene  
 Concen: 24.750 ug/L  
 RT: 11.23 min Scan# 3154  
 Delta R.T. -0.00 min  
 Lab File: VV007600.D  
 Acq: 18 Sep 2018 13:02

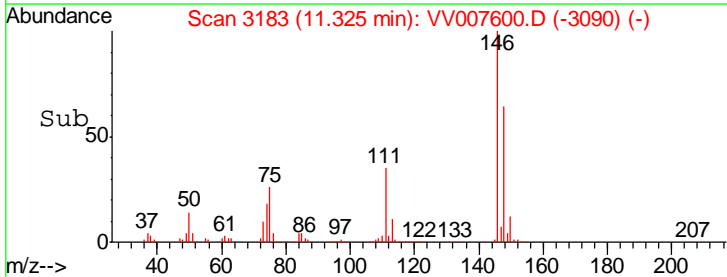
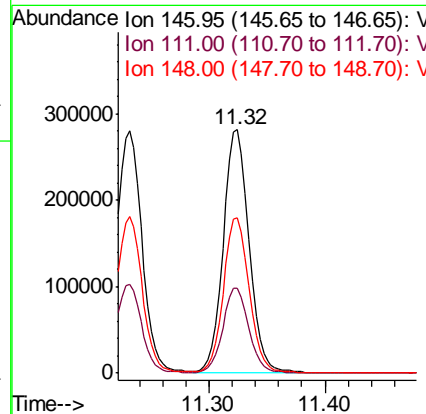
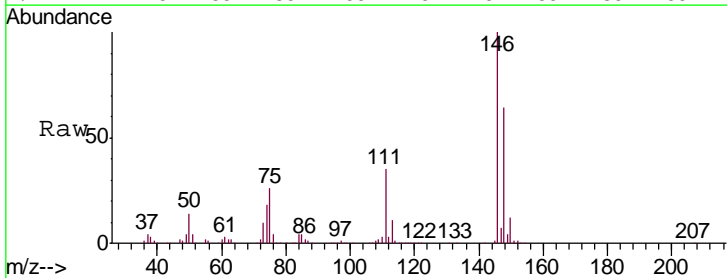
Instrument :  
 MSVOA\_V  
 ClientSampled :  
 VSTD02070

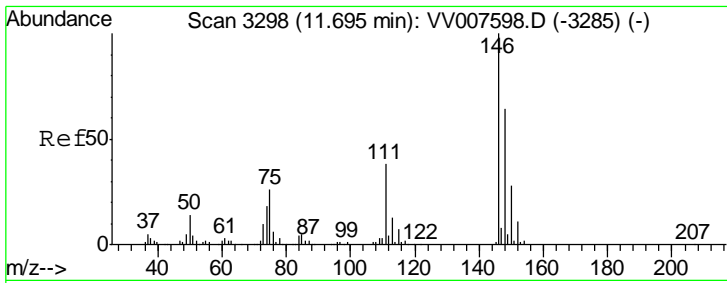
Tgt Ion	Resp	Lower	Upper
146	100		
111	36.6	25.0	46.4
148	64.4	44.6	82.8



#63  
 1,4-Dichlorobenzene  
 Concen: 24.786 ug/L  
 RT: 11.32 min Scan# 3183  
 Delta R.T. -0.00 min  
 Lab File: VV007600.D  
 Acq: 18 Sep 2018 13:02

Tgt Ion	Resp	Lower	Upper
146	100		
111	34.8	24.5	45.5
148	63.8	44.0	81.8

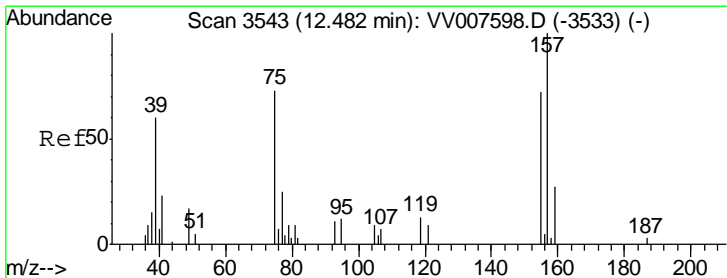
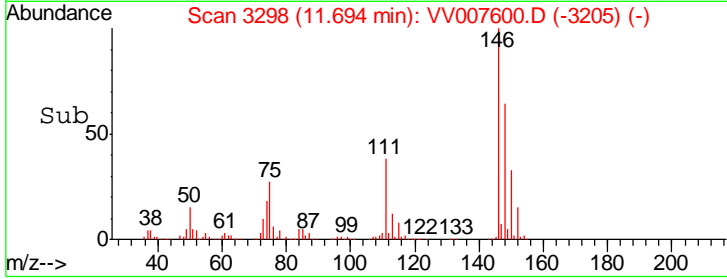
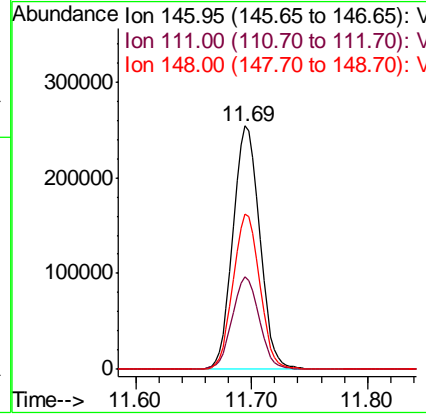
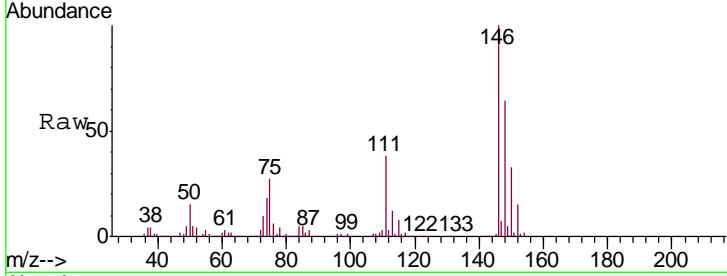




#65  
 1,2-Dichlorobenzene  
 Concen: 24.683 ug/L  
 RT: 11.69 min Scan# 3298  
 Delta R.T. -0.00 min  
 Lab File: VV007600.D  
 Acq: 18 Sep 2018 13:02

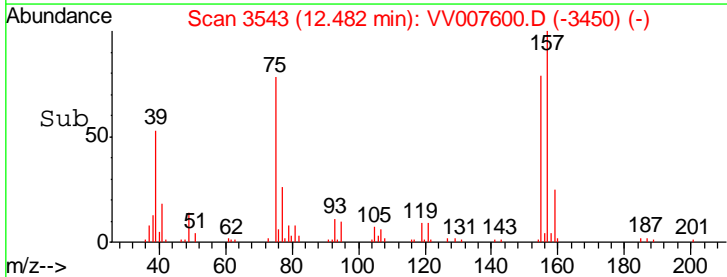
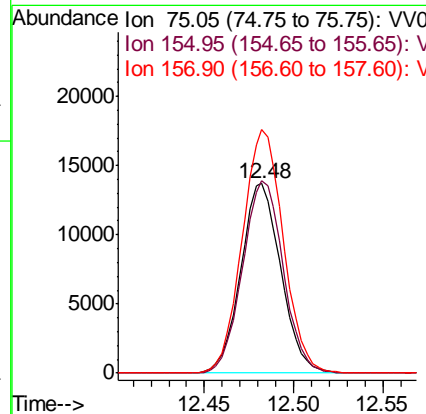
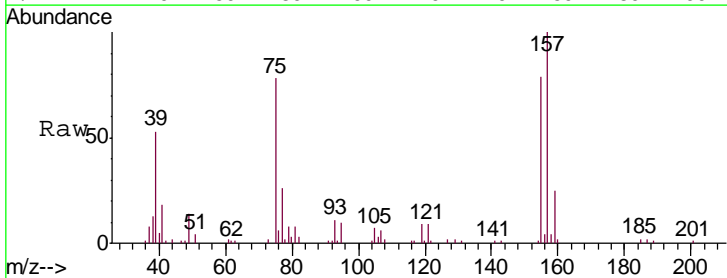
Instrument :  
 MSVOA\_V  
 ClientSampled :  
 VSTD02070

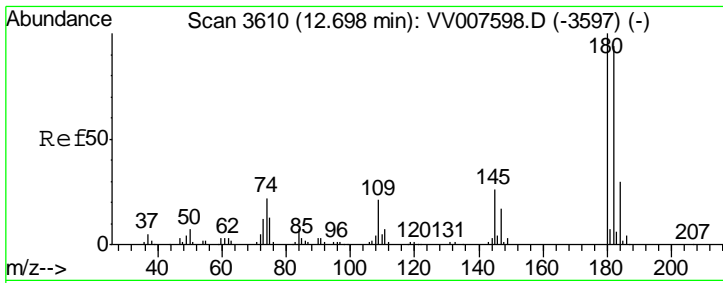
Tgt Ion	Resp	Lower	Upper
146	404203		
111	38.0	30.6	46.0
148	63.5	51.3	76.9



#66  
 1,2-Dibromo-3-chloropropane  
 Concen: 26.622 ug/L  
 RT: 12.48 min Scan# 3543  
 Delta R.T. -0.00 min  
 Lab File: VV007600.D  
 Acq: 18 Sep 2018 13:02

Tgt Ion	Resp	Lower	Upper
75	21413		
155	101.7	79.1	118.7
157	128.6	109.8	164.6

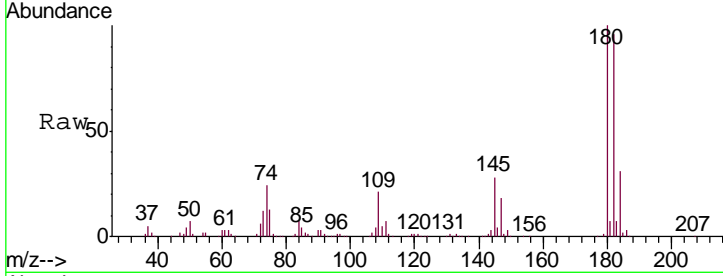




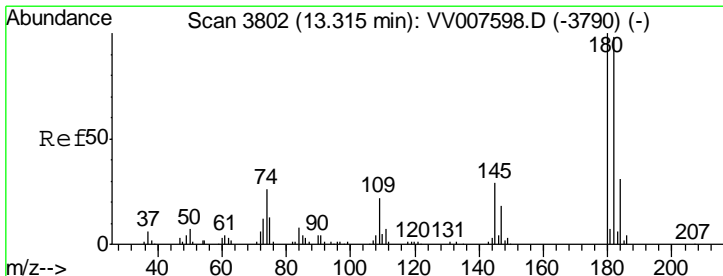
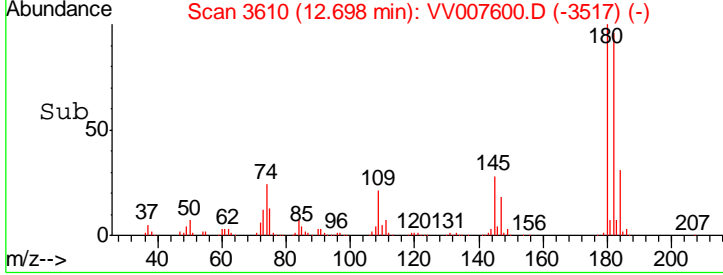
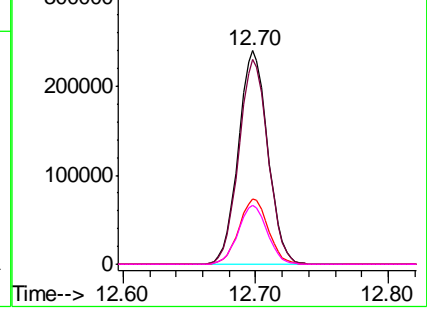
#67  
 1,3,5-Trichlorobenzene  
 Concen: 26.683 ug/L  
 RT: 12.70 min Scan# 3610  
 Delta R.T. -0.00 min  
 Lab File: VV007600.D  
 Acq: 18 Sep 2018 13:02

Instrument : MSVOA\_V  
 ClientSampled : VSTD02070

Tgt Ion	Resp	Lower	Upper
180	100		
182	95.5	75.4	113.2
184	30.6	24.6	36.8
145	27.4	21.4	32.0

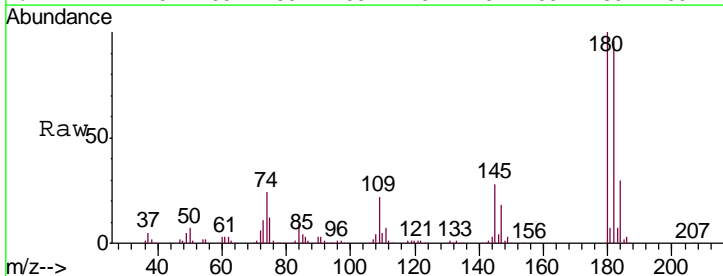


Abundance Ion 180.00 (179.70 to 180.70): V  
 Ion 182.00 (181.70 to 182.70): V  
 Ion 184.00 (183.70 to 184.70): V  
 Ion 145.00 (144.70 to 145.70): V

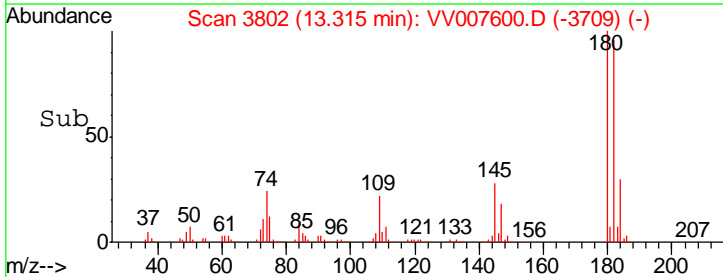
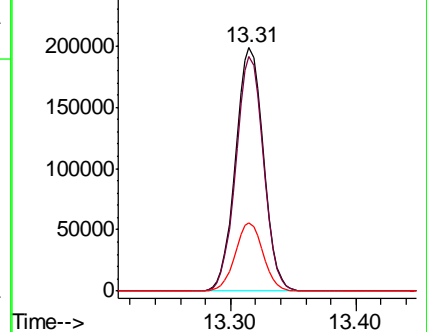


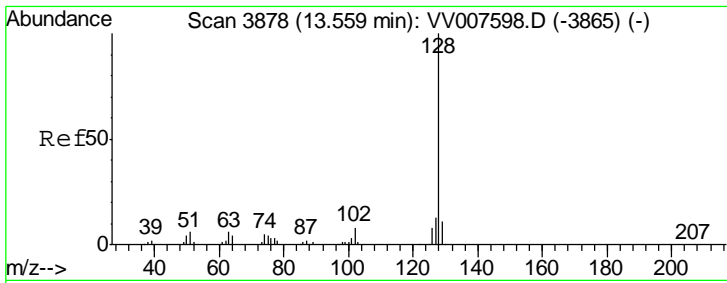
#68  
 1,2,4-trichlorobenzene  
 Concen: 31.024 ug/L  
 RT: 13.31 min Scan# 3802  
 Delta R.T. -0.00 min  
 Lab File: VV007600.D  
 Acq: 18 Sep 2018 13:02

Tgt Ion	Resp	Lower	Upper
180	100		
182	95.4	77.9	116.9
145	28.0	23.1	34.7



Abundance Ion 179.90 (179.60 to 180.60): V  
 Ion 182.00 (181.70 to 182.70): V  
 Ion 144.95 (144.65 to 145.65): V

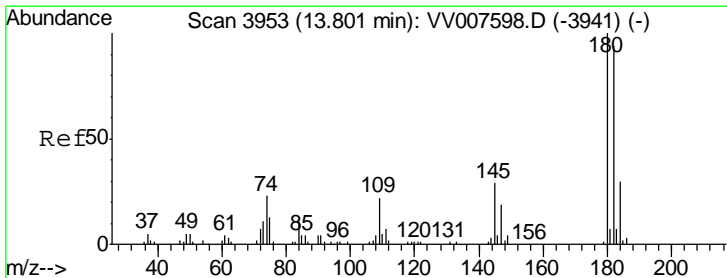
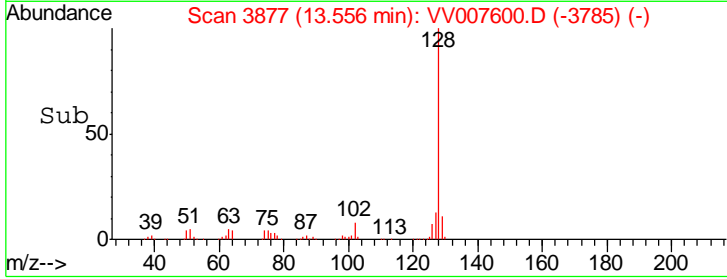
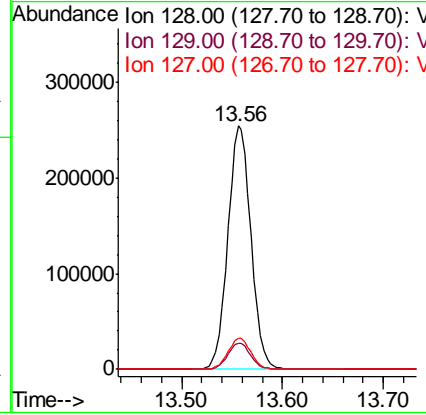
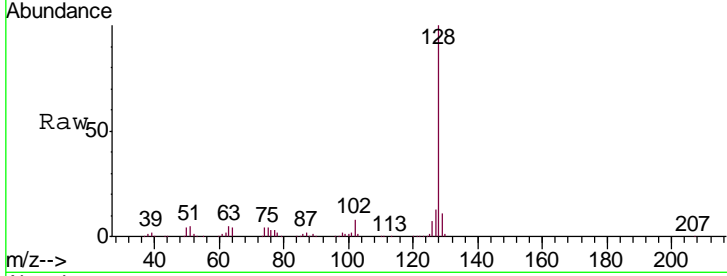




#69  
 Naphthalene  
 Concen: 34.547 ug/L  
 RT: 13.56 min Scan# 3877  
 Delta R.T. -0.00 min  
 Lab File: VV007600.D  
 Acq: 18 Sep 2018 13:02

Instrument : MSVOA\_V  
 ClientSampled : VSTD02070

Tgt Ion	Resp	Lower	Upper
128	406391		
129	10.8	8.6	12.8
127	12.8	10.4	15.6



#70  
 1,2,3-Trichlorobenzene  
 Concen: 29.814 ug/L  
 RT: 13.80 min Scan# 3952  
 Delta R.T. -0.00 min  
 Lab File: VV007600.D  
 Acq: 18 Sep 2018 13:02

Tgt Ion	Resp	Lower	Upper
180	269290		
182	96.2	75.1	112.7
145	30.1	23.6	35.4

