

Data Path : Z:\VOASRV\HPCHEM1\MSVOA V\DATA\VV091820\
 Data File : VV018324.D
 Acq On : 18 Sep 2020 15:52
 Operator : SY/MD
 Sample : L4065-13
 Misc : 5.0mL/MSVOA V/WATER
 ALS Vial : 17 Sample Multiplier: 1

Instrument :
 MSVOA_V
 ClientSampled :

Quant Time: Sep 19 01:44:04 2020
 Quant Method : Z:\VOASRV\HPCHEM1\MSVOA_V\METHOD\SOMVLM090920WMA.M
 Quant Title : VOC Analysis
 QLast Update : Sat Sep 19 01:35:10 2020
 Response via : Initial Calibration

| Internal Standards | R.T. | QIon | Response | Conc | Units | Dev(Min) |
|----------------------------|-------|------|----------|-------|-------|----------|
| 1) 1,4-Difluorobenzene | 5.64 | 114 | 278512 | 50.00 | ug/L | 0.00 |
| 28) Chlorobenzene-d5 | 8.87 | 117 | 276918 | 50.00 | ug/L | 0.00 |
| 60) 1,4-Dichlorobenzene-d4 | 11.27 | 152 | 131175 | 50.00 | ug/L | 0.00 |

System Monitoring Compounds

| | | | | | | |
|--------------------------------|---------|-------|----------|----------|------|--------|
| 4) Vinyl Chloride-d3 | 1.32 | 65 | 97731 | 43.06 | ug/L | 0.00 |
| Spiked Amount | 50.000 | Range | 60 - 135 | Recovery | = | 86.12% |
| 7) Chloroethane-d5 | 1.58 | 69 | 81175 | 43.71 | ug/L | 0.00 |
| Spiked Amount | 50.000 | Range | 70 - 130 | Recovery | = | 87.42% |
| 11) 1,1-Dichloroethene-d2 | 2.12 | 63 | 145804 | 35.02 | ug/L | 0.00 |
| Spiked Amount | 50.000 | Range | 60 - 125 | Recovery | = | 70.04% |
| 21) 2-Butanone-d5 | 3.92 | 46 | 119409 | 85.95 | ug/L | 0.00 |
| Spiked Amount | 100.000 | Range | 40 - 130 | Recovery | = | 85.95% |
| 24) Chloroform-d | 4.38 | 84 | 171054 | 43.44 | ug/L | 0.00 |
| Spiked Amount | 50.000 | Range | 70 - 125 | Recovery | = | 86.88% |
| 26) 1,2-Dichloroethane-d4 | 5.06 | 65 | 115168 | 45.62 | ug/L | 0.00 |
| Spiked Amount | 50.000 | Range | 70 - 125 | Recovery | = | 91.24% |
| 32) Benzene-d6 | 5.08 | 84 | 345431 | 43.57 | ug/L | 0.00 |
| Spiked Amount | 50.000 | Range | 70 - 125 | Recovery | = | 87.14% |
| 36) 1,2-Dichloropropane-d6 | 6.09 | 67 | 111062 | 44.09 | ug/L | 0.00 |
| Spiked Amount | 50.000 | Range | 70 - 120 | Recovery | = | 88.18% |
| 41) Toluene-d8 | 7.34 | 98 | 309222 | 42.80 | ug/L | 0.00 |
| Spiked Amount | 50.000 | Range | 80 - 120 | Recovery | = | 85.60% |
| 43) trans-1,3-Dichloropropene- | 7.64 | 79 | 53783 | 42.02 | ug/L | 0.00 |
| Spiked Amount | 50.000 | Range | 60 - 125 | Recovery | = | 84.04% |
| 47) 2-Hexanone-d5 | 8.11 | 63 | 81600 | 85.52 | ug/L | 0.00 |
| Spiked Amount | 100.000 | Range | 45 - 130 | Recovery | = | 85.52% |
| 57) 1,1,2,2-Tetrachloroethane- | 10.24 | 84 | 138258 | 43.73 | ug/L | 0.00 |
| Spiked Amount | 50.000 | Range | 65 - 120 | Recovery | = | 87.46% |
| 64) 1,2-Dichlorobenzene-d4 | 11.65 | 152 | 127378 | 47.28 | ug/L | 0.00 |
| Spiked Amount | 50.000 | Range | 80 - 120 | Recovery | = | 94.56% |

Target Compounds

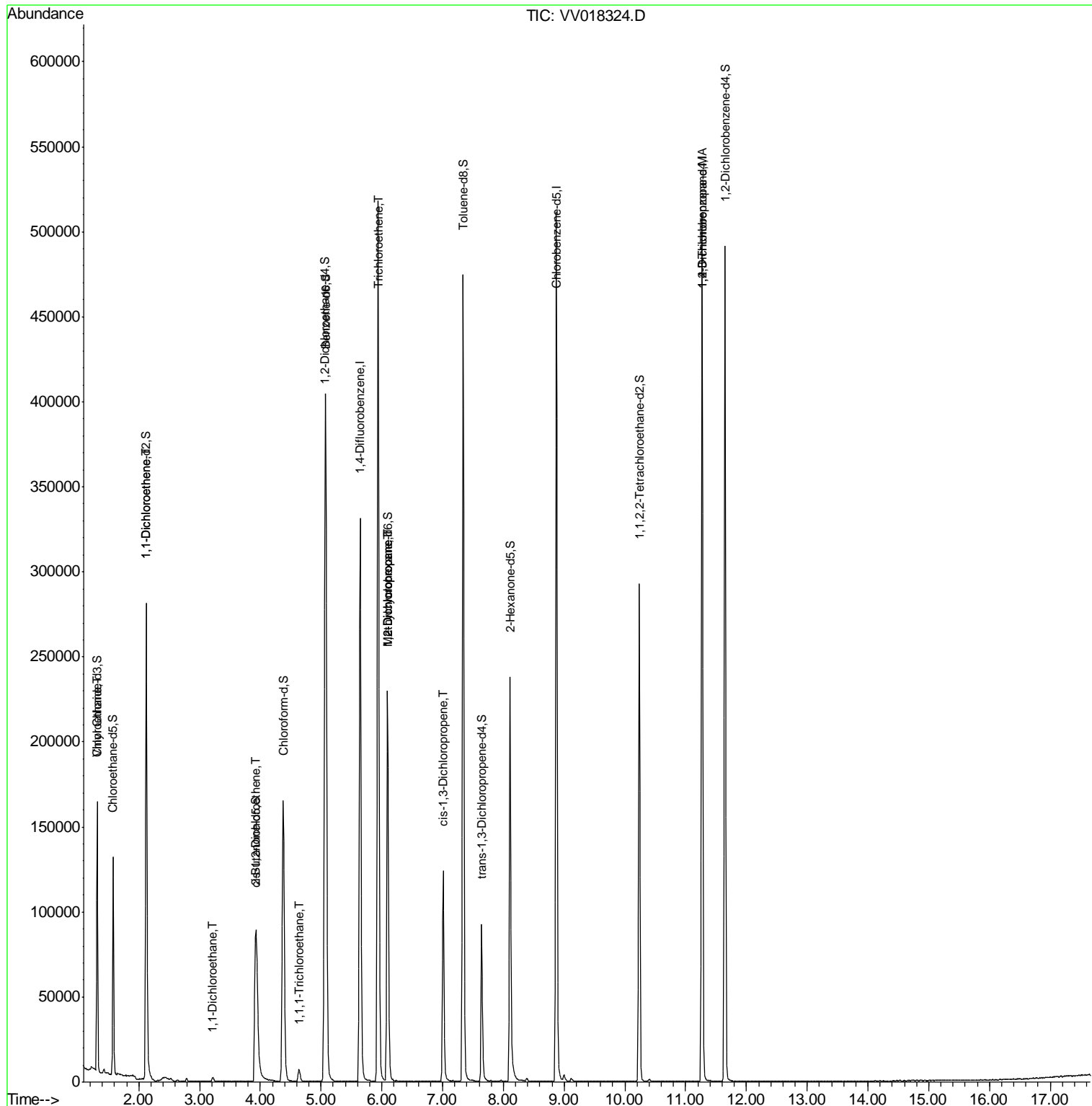
| Target Compounds | R.T. | QIon | Response | Conc | Units | Ovalue |
|-----------------------------|-------|------|----------|--------|--------|--------|
| 8) Chloroethane | 1.32 | 64 | 1388 | 0.974 | ug/L # | 1 |
| 12) 1,1-Dichloroethene | 2.13 | 96 | 10016 | 5.477 | ug/L # | 1 |
| 19) 1,1-Dichloroethane | 3.21 | 63 | 3119 | 0.875 | ug/L | 96 |
| 20) cis-1,2-Dichloroethene | 3.94 | 96 | 15428 | 7.658 | ug/L | 99 |
| 30) 1,1,1-Trichloroethane | 4.64 | 97 | 6437 | 2.003 | ug/L | 97 |
| 34) Trichloroethene | 5.94 | 95 | 181617 | 84.207 | ug/L | 99 |
| 35) Methylcyclohexane | 6.09 | 83 | 26370 | 8.120 | ug/L # | 18 |
| 37) 1,2-Dichloropropane | 6.09 | 63 | 11876 | 5.661 | ug/L # | 87 |
| 39) cis-1,3-Dichloropropene | 7.01 | 75 | 2977 | 0.921 | ug/L # | 59 |
| 59) 1,2,3-Trichloropropane | 11.27 | 75 | 14732 | 5.970 | ug/L | 89 |

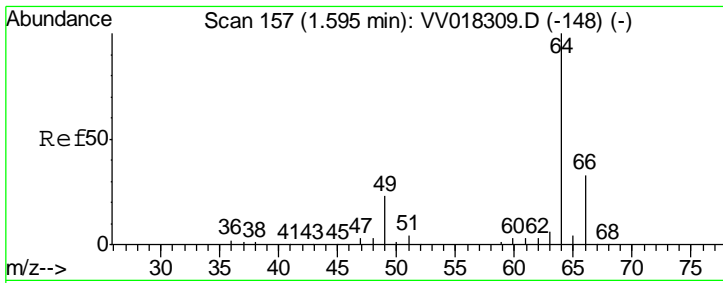
(#) = qualifier out of range (m) = manual integration (+) = signals summed

Data Path : Z:\VOASRV\HPCHEM1\MSVOA V\DATA\VV091820\
 Data File : VV018324.D
 Acq On : 18 Sep 2020 15:52
 Operator : SY/MD
 Sample : L4065-13
 Misc : 5.0mL/MSVOA V/WATER
 ALS Vial : 17 Sample Multiplier: 1

Instrument :
 MSVOA_V
 ClientSampled :

Quant Time: Sep 19 01:44:04 2020
 Quant Method : Z:\VOASRV\HPCHEM1\MSVOA_V\METHOD\SOMVLM090920WMA.M
 Quant Title : VOC Analysis
 QLast Update : Sat Sep 19 01:35:10 2020
 Response via : Initial Calibration

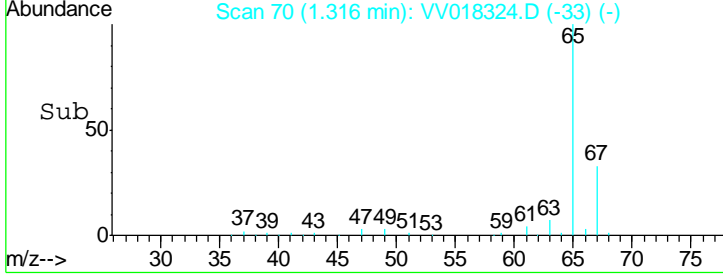
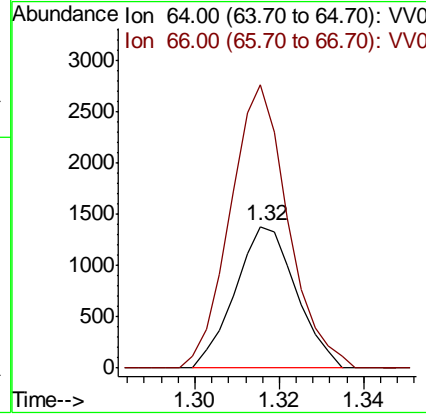
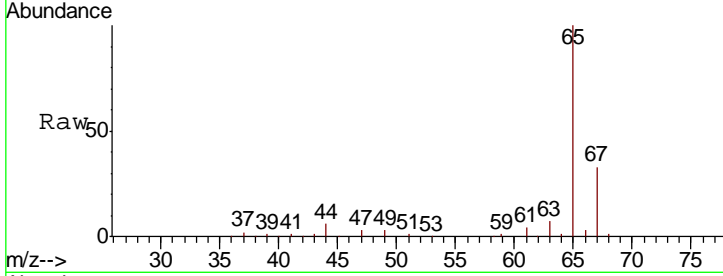




#8
 Chloroethane
 Concen: 0.974 ug/L
 RT: 1.32 min Scan# 70
 Delta R.T. -0.28 min
 Lab File: VV018324.D
 Acq: 18 Sep 2020 15:52

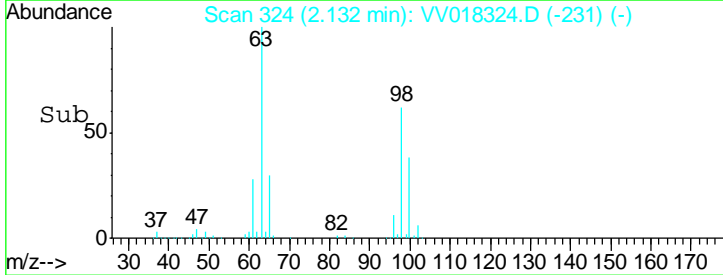
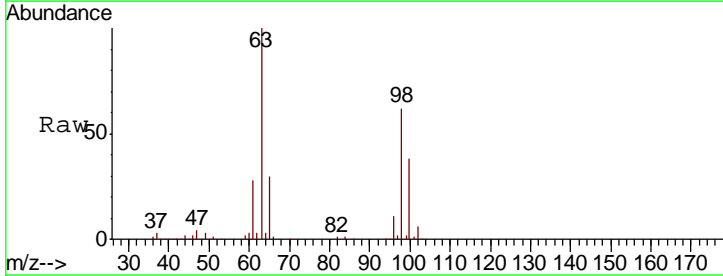
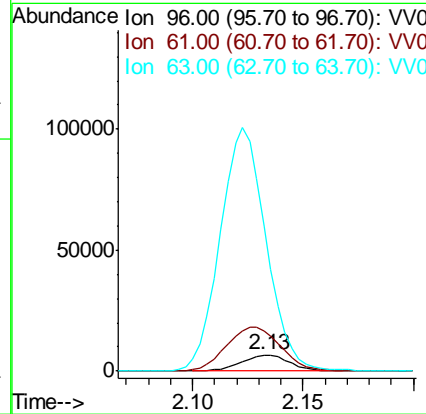
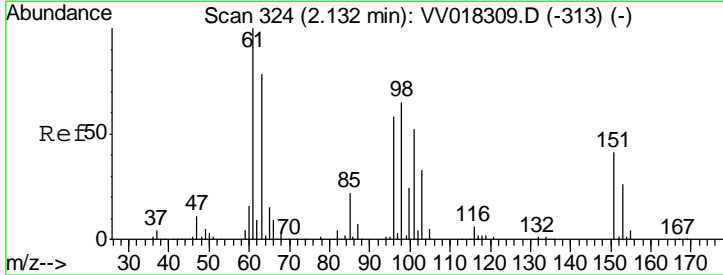
Instrument :
 MSVOA_V
 ClientSampled :

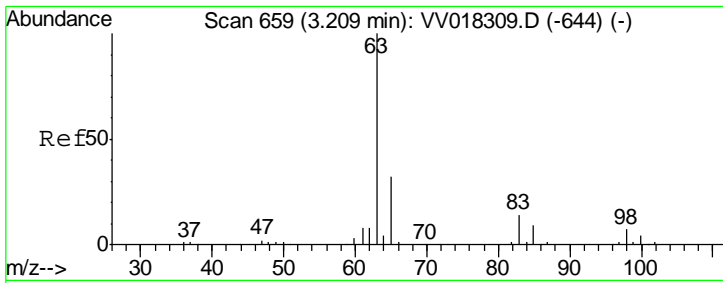
| Tgt Ion | Resp | Lower | Upper |
|---------|-------|-------|-------|
| 64 | 100 | | |
| 66 | 200.1 | 22.5 | 41.7# |



#12
 1,1-Dichloroethene
 Concen: 5.477 ug/L
 RT: 2.13 min Scan# 324
 Delta R.T. 0.00 min
 Lab File: VV018324.D
 Acq: 18 Sep 2020 15:52

| Tgt Ion | Resp | Lower | Upper |
|---------|-------|-------|--------|
| 96 | 100 | | |
| 61 | 254.5 | 122.9 | 228.3# |
| 63 | 914.7 | 91.9 | 170.7# |

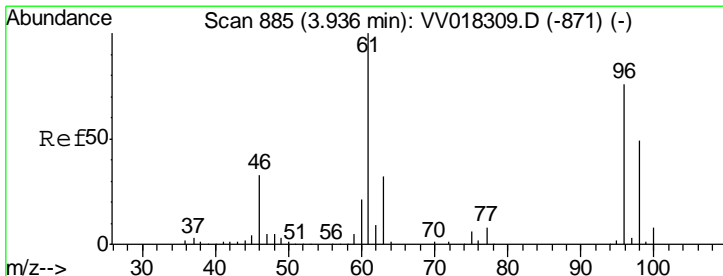
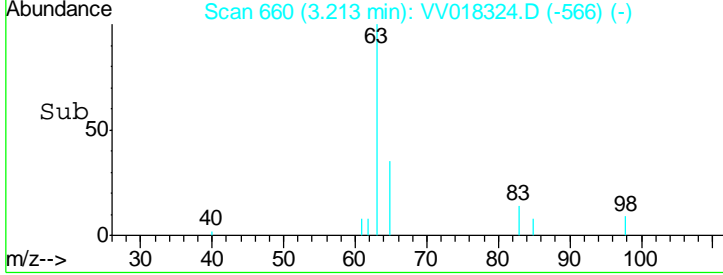
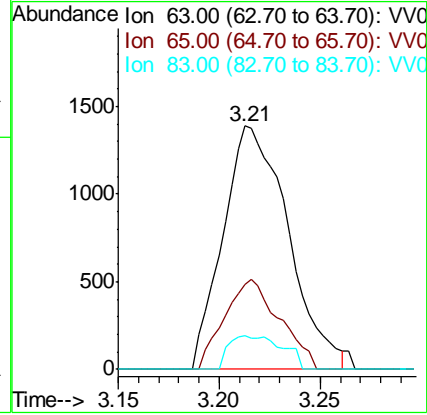
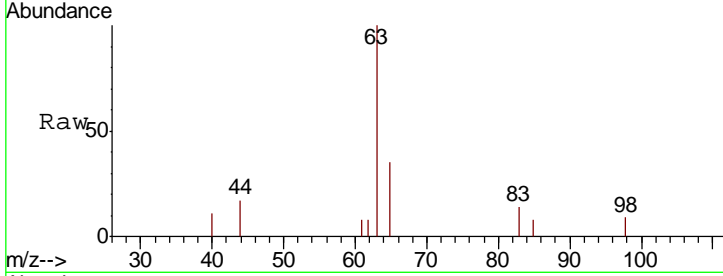




#19
 1,1-Dichloroethane
 Concen: 0.875 ug/L
 RT: 3.21 min Scan# 660
 Delta R.T. 0.00 min
 Lab File: VV018324.D
 Acq: 18 Sep 2020 15:52

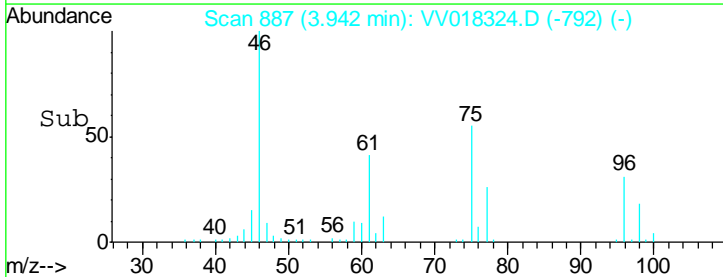
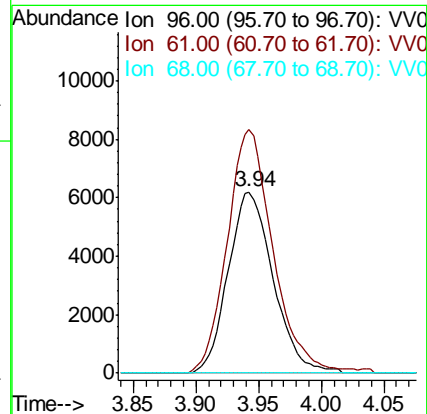
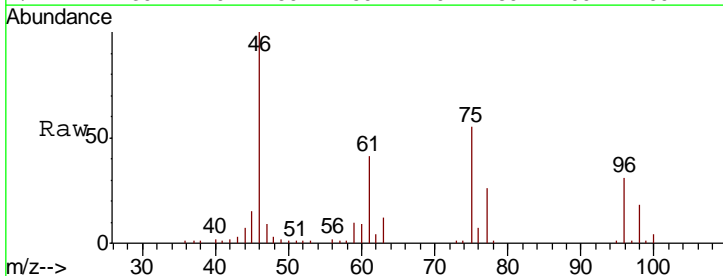
Instrument : MSVOA_V
 ClientSampled :

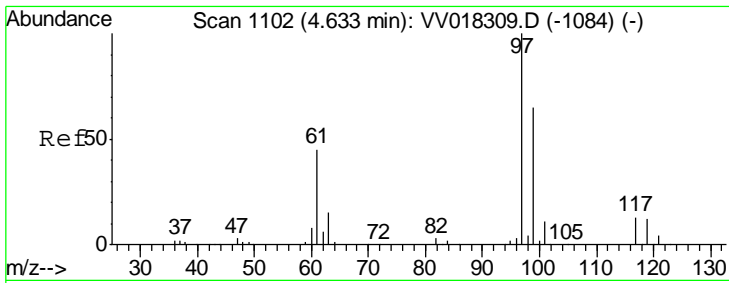
| Tgt Ion | Resp | Lower | Upper |
|---------|------|-------|-------|
| 63 | 3119 | | |
| 65 | 35.0 | 22.5 | 41.7 |
| 83 | 13.6 | 9.3 | 17.3 |



#20
 cis-1,2-Dichloroethene
 Concen: 7.658 ug/L
 RT: 3.94 min Scan# 887
 Delta R.T. 0.01 min
 Lab File: VV018324.D
 Acq: 18 Sep 2020 15:52

| Tgt Ion | Resp | Lower | Upper |
|---------|-------|-------|-------|
| 96 | 15428 | | |
| 61 | 134.6 | 93.6 | 173.8 |
| 68 | 0.0 | 0.0 | 0.0 |

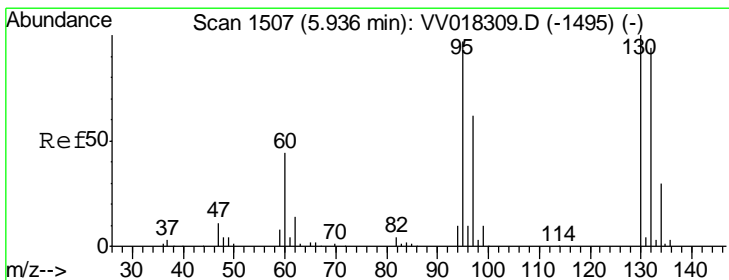
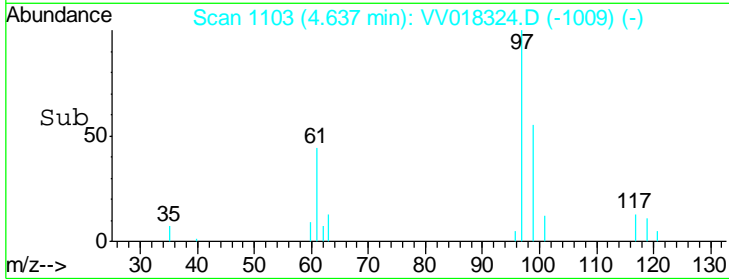
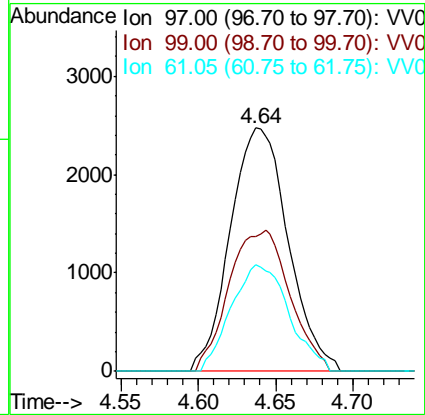
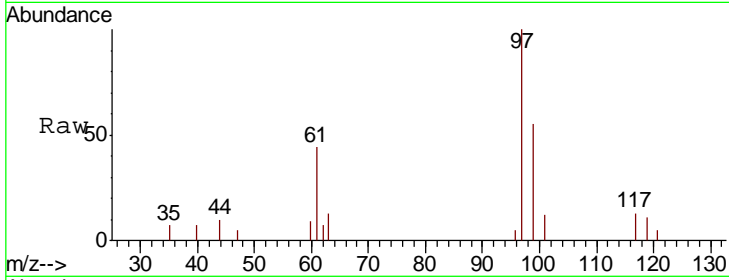




#30
 1,1,1-Trichloroethane
 Concen: 2.003 ug/L
 RT: 4.64 min Scan# 1103
 Delta R.T. 0.00 min
 Lab File: VV018324.D
 Acq: 18 Sep 2020 15:52

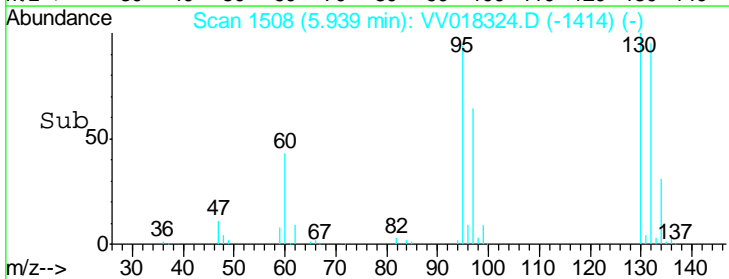
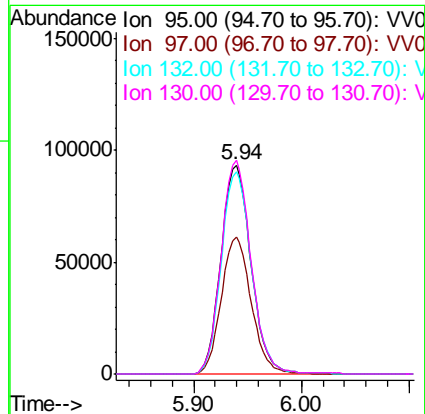
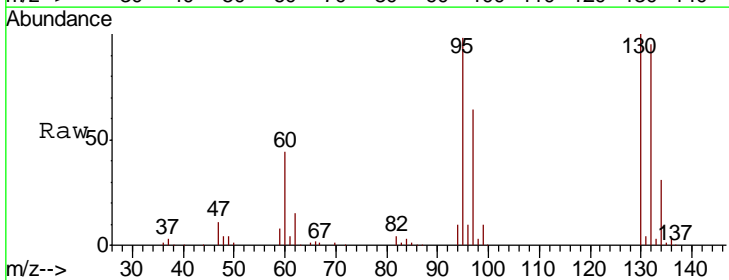
Instrument :
 MSVOA_V
 ClientSampled :

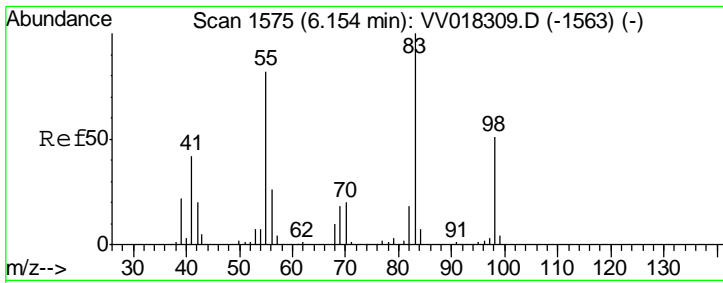
| Tgt Ion | Resp | Lower | Upper |
|---------|------|-------|-------|
| 97 | 100 | | |
| 99 | 60.8 | 51.6 | 77.4 |
| 61 | 43.7 | 34.9 | 52.3 |



#34
 Trichloroethene
 Concen: 84.207 ug/L
 RT: 5.94 min Scan# 1508
 Delta R.T. 0.00 min
 Lab File: VV018324.D
 Acq: 18 Sep 2020 15:52

| Tgt Ion | Resp | Lower | Upper |
|---------|-------|-------|-------|
| 95 | 100 | | |
| 97 | 65.3 | 46.3 | 85.9 |
| 132 | 96.5 | 68.1 | 126.5 |
| 130 | 102.1 | 71.5 | 132.9 |

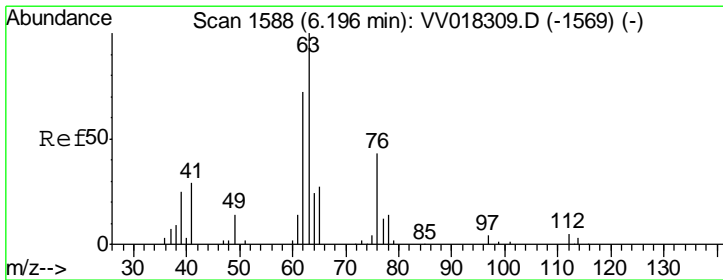
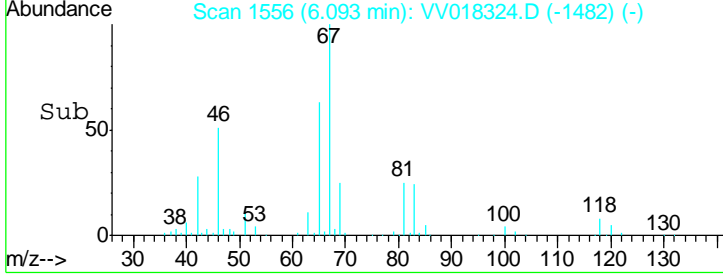
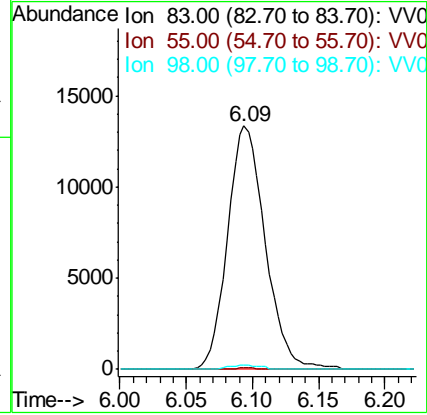
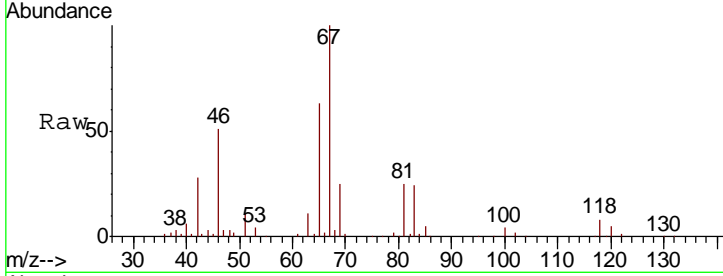




#35
 Methylcyclohexane
 Concen: 8.120 ug/L
 RT: 6.09 min Scan# 1556
 Delta R.T. -0.06 min
 Lab File: VV018324.D
 Acq: 18 Sep 2020 15:52

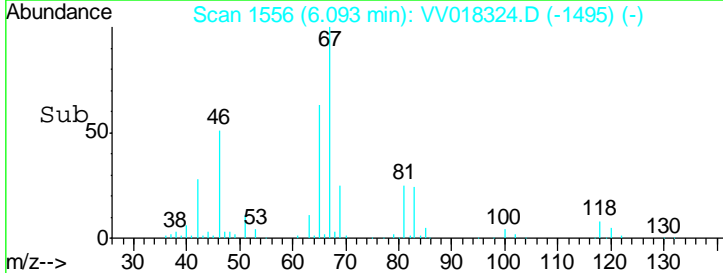
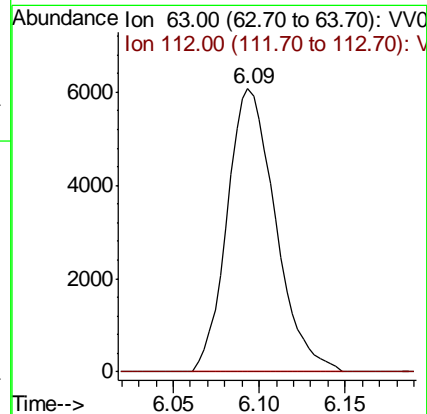
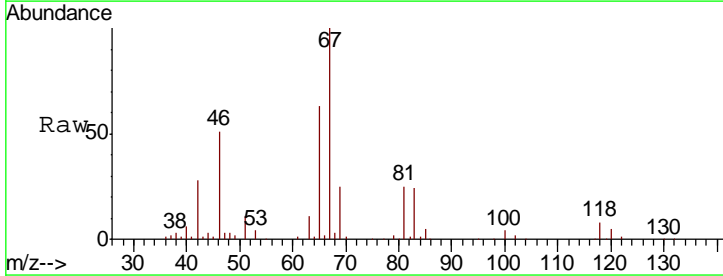
Instrument :
 MSVOA_V
 ClientSampled :

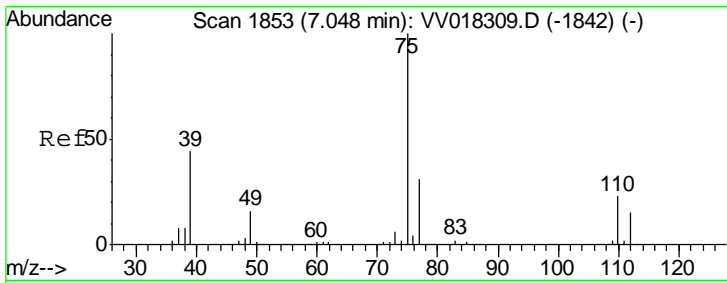
| Tgt Ion | Resp | Lower | Upper |
|---------|-------|-------|-------|
| 83 | 26370 | | |
| 55 | 0.2 | 63.4 | 95.2# |
| 98 | 1.1 | 38.8 | 58.2# |



#37
 1,2-Dichloropropane
 Concen: 5.661 ug/L
 RT: 6.09 min Scan# 1556
 Delta R.T. -0.10 min
 Lab File: VV018324.D
 Acq: 18 Sep 2020 15:52

| Tgt Ion | Resp | Lower | Upper |
|---------|-------|-------|-------|
| 63 | 11876 | | |
| 112 | 0.0 | 3.4 | 5.2# |

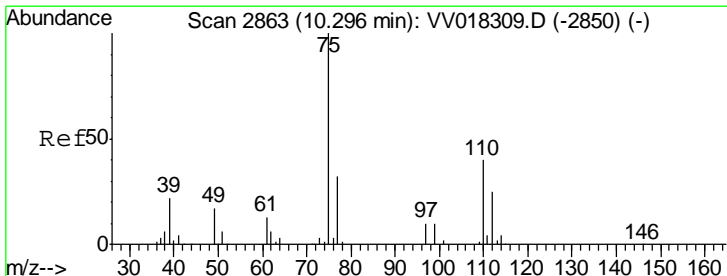
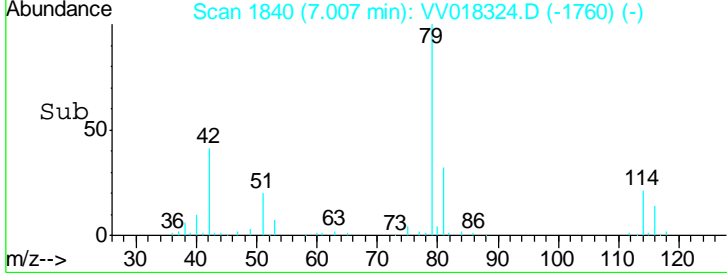
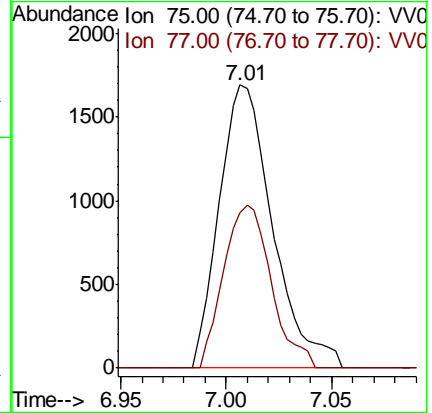
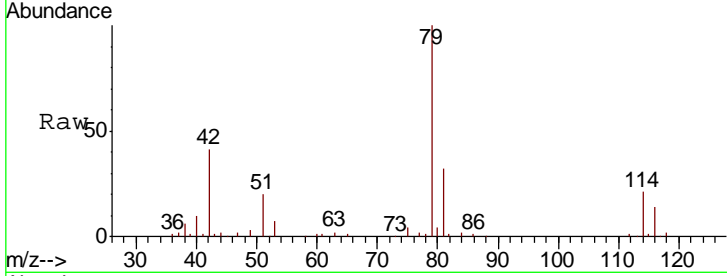




#39
 cis-1,3-Dichloropropene
 Concen: 0.921 ug/L
 RT: 7.01 min Scan# 1840
 Delta R.T. -0.04 min
 Lab File: VV018324.D
 Acq: 18 Sep 2020 15:52

Instrument :
 MSVOA_V
 ClientSampled :

| Tgt Ion | Resp | Lower | Upper |
|---------|------|-------|-------|
| 75 | 100 | | |
| 77 | 54.8 | 22.3 | 41.3# |



#59
 1,2,3-Trichloropropane
 Concen: 5.970 ug/L
 RT: 11.27 min Scan# 3166
 Delta R.T. 0.97 min
 Lab File: VV018324.D
 Acq: 18 Sep 2020 15:52

| Tgt Ion | Resp | Lower | Upper |
|---------|------|-------|-------|
| 75 | 100 | | |
| 77 | 38.4 | 25.8 | 38.6 |

