

Data Path : Z:\VOASRV\HPCHEM1\MSVOA V\DATA\VV091820\
 Data File : VV018336.D
 Acq On : 18 Sep 2020 20:45
 Operator : SY/MD
 Sample : VV0918WBL02
 Misc : 5.0mL/MSVOA V/WATER
 ALS Vial : 30 Sample Multiplier: 1

Instrument :
 MSVOA_V
 ClientSampleId :

Quant Time: Sep 19 05:18:21 2020
 Quant Method : Z:\VOASRV\HPCHEM1\MSVOA_V\METHOD\SOMVLM090920WMA.M
 Quant Title : VOC Analysis
 QLast Update : Sat Sep 19 05:11:16 2020
 Response via : Initial Calibration

Internal Standards	R.T.	QIon	Response	Conc	Units	Dev(Min)
1) 1,4-Difluorobenzene	5.64	114	280948	50.00	ug/L	0.00
28) Chlorobenzene-d5	8.87	117	276274	50.00	ug/L	0.00
60) 1,4-Dichlorobenzene-d4	11.27	152	133366	50.00	ug/L	0.00

System Monitoring Compounds

4) Vinyl Chloride-d3	1.32	65	106822	46.65	ug/L	0.00
Spiked Amount	50.000	Range	60 - 135	Recovery	=	93.30%
7) Chloroethane-d5	1.58	69	87618	46.77	ug/L	0.00
Spiked Amount	50.000	Range	70 - 130	Recovery	=	93.54%
11) 1,1-Dichloroethene-d2	2.12	63	150800	35.91	ug/L	0.00
Spiked Amount	50.000	Range	60 - 125	Recovery	=	71.82%
21) 2-Butanone-d5	3.92	46	125733	89.72	ug/L	0.00
Spiked Amount	100.000	Range	40 - 130	Recovery	=	89.72%
24) Chloroform-d	4.38	84	180772	45.51	ug/L	0.00
Spiked Amount	50.000	Range	70 - 125	Recovery	=	91.02%
26) 1,2-Dichloroethane-d4	5.06	65	121339	47.65	ug/L	0.00
Spiked Amount	50.000	Range	70 - 125	Recovery	=	95.30%
32) Benzene-d6	5.08	84	366964	46.40	ug/L	0.00
Spiked Amount	50.000	Range	70 - 125	Recovery	=	92.80%
36) 1,2-Dichloropropane-d6	6.09	67	117206	46.64	ug/L	0.00
Spiked Amount	50.000	Range	70 - 120	Recovery	=	93.28%
41) Toluene-d8	7.34	98	327995	45.51	ug/L	0.00
Spiked Amount	50.000	Range	80 - 120	Recovery	=	91.02%
43) trans-1,3-Dichloropropene-	7.64	79	54657	42.80	ug/L	0.00
Spiked Amount	50.000	Range	60 - 125	Recovery	=	85.60%
47) 2-Hexanone-d5	8.11	63	83012	87.21	ug/L	0.00
Spiked Amount	100.000	Range	45 - 130	Recovery	=	87.21%
57) 1,1,2,2-Tetrachloroethane-	10.24	84	143232	45.41	ug/L	0.00
Spiked Amount	50.000	Range	65 - 120	Recovery	=	90.82%
64) 1,2-Dichlorobenzene-d4	11.65	152	135162	49.35	ug/L	0.00
Spiked Amount	50.000	Range	80 - 120	Recovery	=	98.70%

Target Compounds

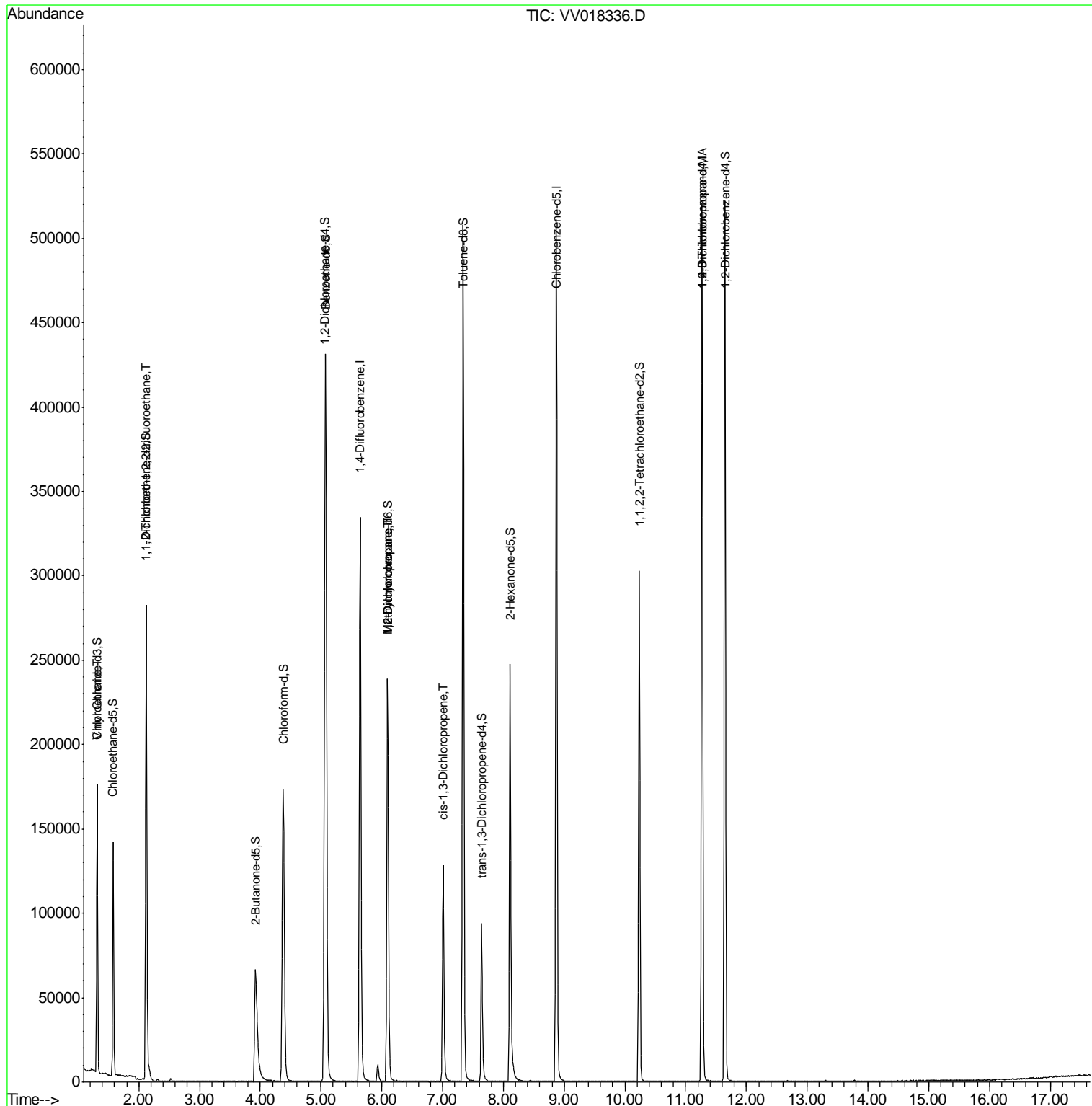
Target Compounds	R.T.	QIon	Response	Conc	Units	Ovalue
8) Chloroethane	1.32	64	1374	0.956	ug/L #	1
10) 1,1,2-Trichloro-1,2,2-trif	2.12	101	1394	0.735	ug/L #	19
35) Methylcyclohexane	6.09	83	27406	8.459	ug/L #	17
37) 1,2-Dichloropropane	6.09	63	12533	5.988	ug/L #	87
39) cis-1,3-Dichloropropene	7.01	75	3341	1.036	ug/L #	66
59) 1,2,3-Trichloropropane	11.27	75	15119	6.141	ug/L	94

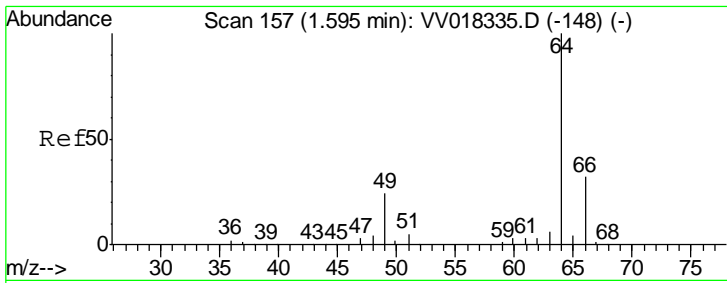
(#) = qualifier out of range (m) = manual integration (+) = signals summed

Data Path : Z:\VOASRV\HPCHEM1\MSVOA V\DATA\VV091820\
 Data File : VV018336.D
 Acq On : 18 Sep 2020 20:45
 Operator : SY/MD
 Sample : VV0918WBL02
 Misc : 5.0mL/MSVOA V/WATER
 ALS Vial : 30 Sample Multiplier: 1

Instrument :
 MSVOA_V
 ClientSampled :

Quant Time: Sep 19 05:18:21 2020
 Quant Method : Z:\VOASRV\HPCHEM1\MSVOA_V\METHOD\SOMVLM090920WMA.M
 Quant Title : VOC Analysis
 QLast Update : Sat Sep 19 05:11:16 2020
 Response via : Initial Calibration

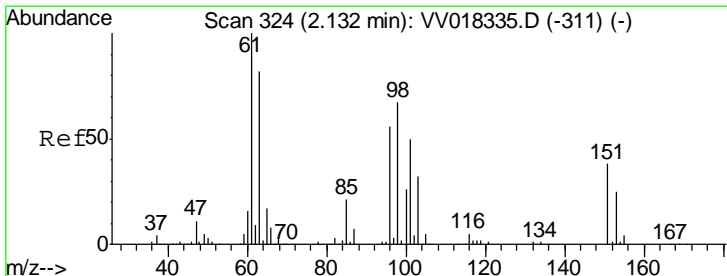
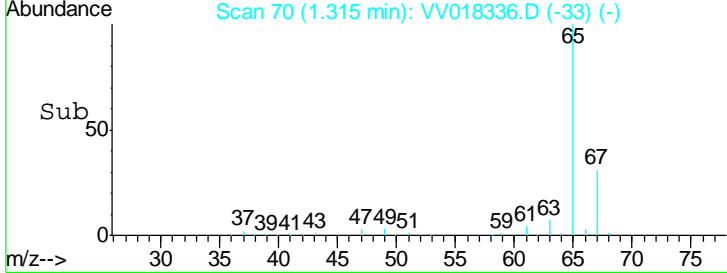
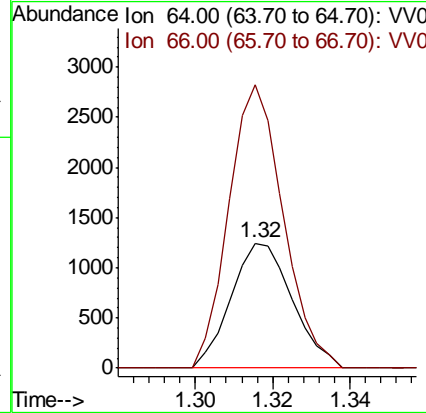
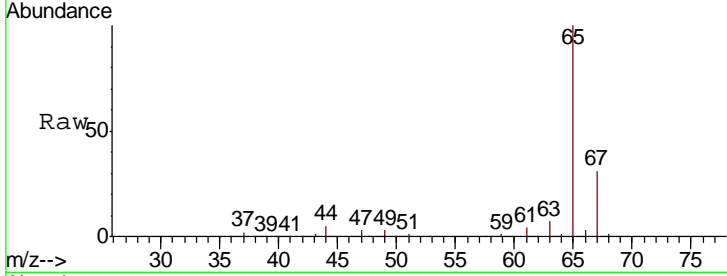




#8
 Chloroethane
 Concen: 0.956 ug/L
 RT: 1.32 min Scan# 70
 Delta R.T. -0.28 min
 Lab File: VV018336.D
 Acq: 18 Sep 2020 20:45

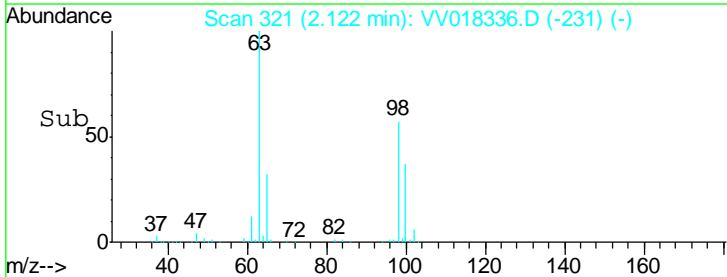
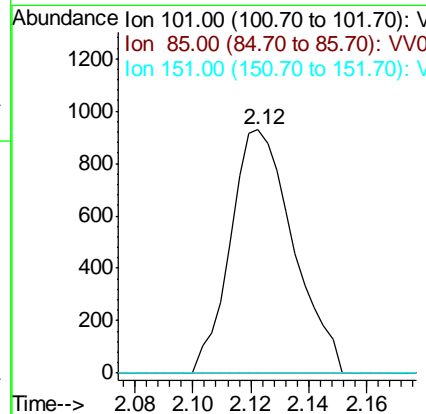
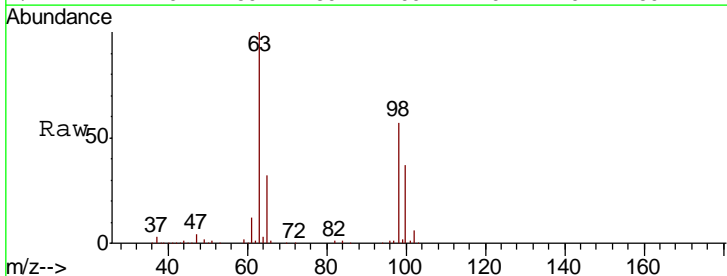
Instrument : MSVOA_V
 ClientSampled :

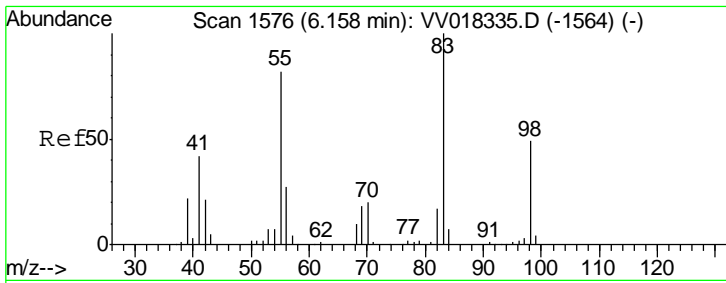
Tgt Ion	Resp	Lower	Upper
64	100		
66	226.7	22.5	41.7#



#10
 1,1,2-Trichloro-1,2,2-trifluoroethane
 Concen: 0.735 ug/L
 RT: 2.12 min Scan# 321
 Delta R.T. -0.01 min
 Lab File: VV018336.D
 Acq: 18 Sep 2020 20:45

Tgt Ion	Resp	Lower	Upper
101	100		
85	0.0	33.5	50.3#
151	0.0	62.2	93.2#

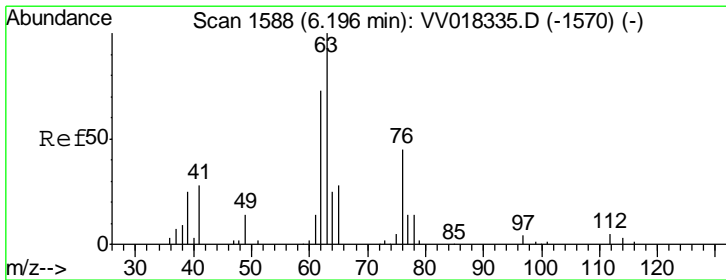
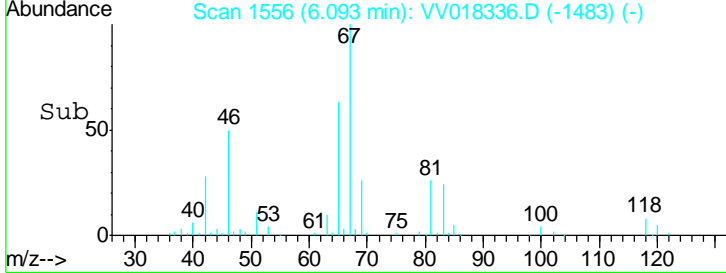
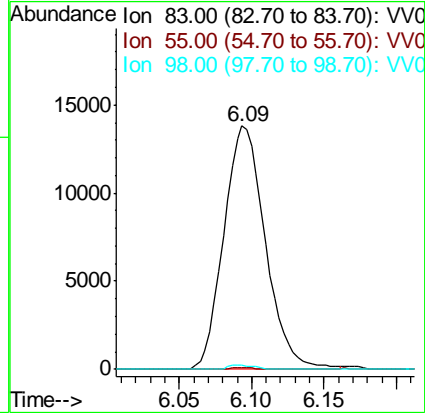
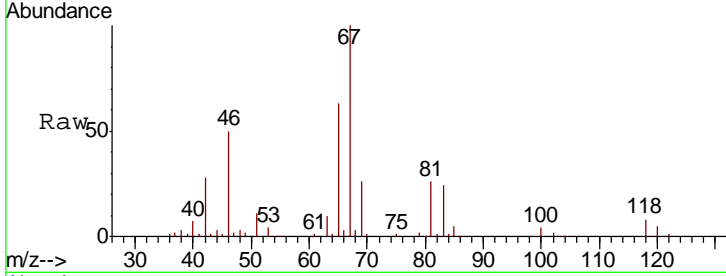




#35
 Methylcyclohexane
 Concen: 8.459 ug/L
 RT: 6.09 min Scan# 1556
 Delta R.T. -0.06 min
 Lab File: VV018336.D
 Acq: 18 Sep 2020 20:45

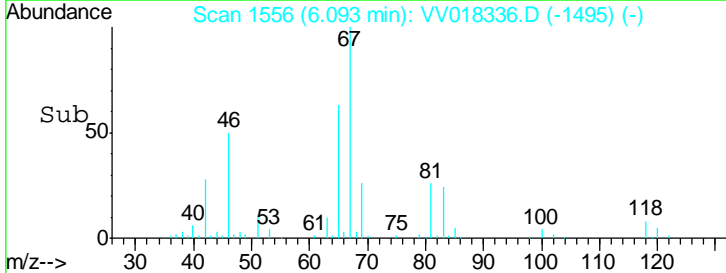
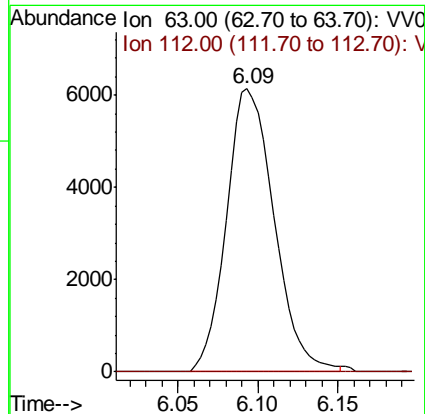
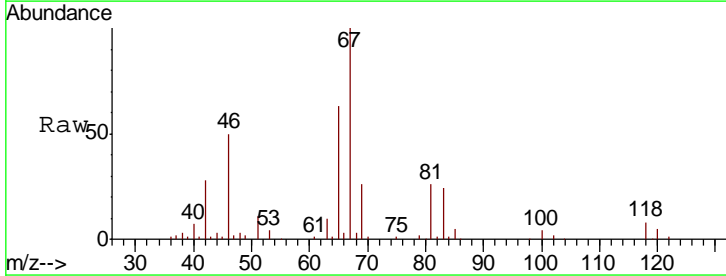
Instrument :
 MSVOA_V
 ClientSampled :

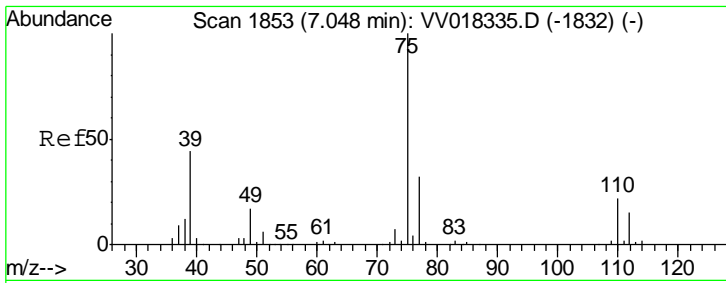
Tgt Ion	Resp	Lower	Upper
83	27406		
55	0.0	63.4	95.2#
98	1.1	38.8	58.2#



#37
 1,2-Dichloropropane
 Concen: 5.988 ug/L
 RT: 6.09 min Scan# 1556
 Delta R.T. -0.10 min
 Lab File: VV018336.D
 Acq: 18 Sep 2020 20:45

Tgt Ion	Resp	Lower	Upper
63	12533		
112	0.0	3.4	5.2#

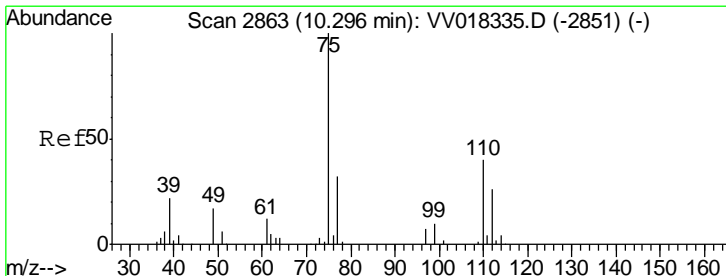
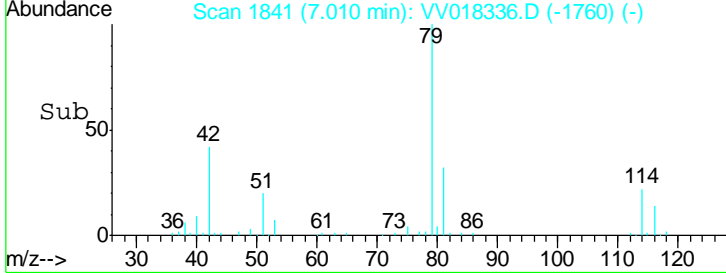
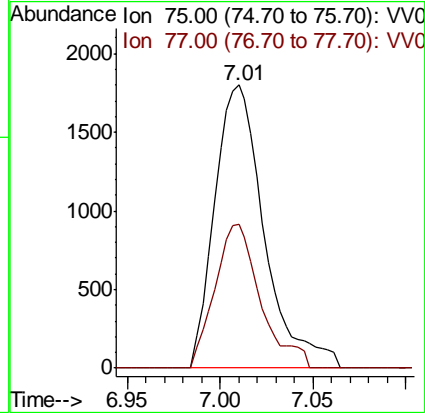
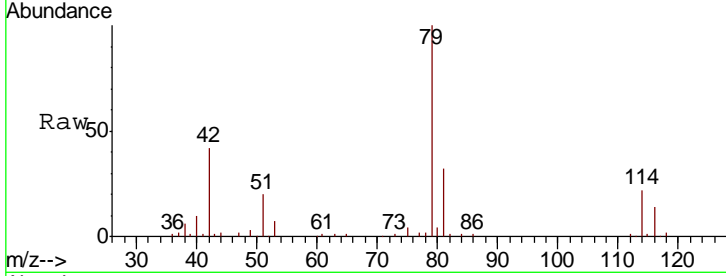




#39
 cis-1,3-Dichloropropene
 Concen: 1.036 ug/L
 RT: 7.01 min Scan# 1841
 Delta R.T. -0.04 min
 Lab File: VV018336.D
 Acq: 18 Sep 2020 20:45

Instrument :
 MSVOA_V
 ClientSampled :

Tgt Ion: 75 Resp: 3341
 Ion Ratio Lower Upper
 75 100
 77 50.9 22.3 41.3#



#59
 1,2,3-Trichloropropane
 Concen: 6.141 ug/L
 RT: 11.27 min Scan# 3166
 Delta R.T. 0.97 min
 Lab File: VV018336.D
 Acq: 18 Sep 2020 20:45

Tgt Ion: 75 Resp: 15119
 Ion Ratio Lower Upper
 75 100
 77 35.4 25.8 38.6

