

Data Path : Z:\voasrv\HPCHEM1\MSVOA_V\DATA\VV091924\
 Data File : VV037411.D
 Acq On : 20 Sep 2024 03:31
 Operator : SY/MD
 Sample : P3994-10
 Misc : 25mL/MSVOA_V/WATER
 ALS Vial : 1 Sample Multiplier: 1

Instrument :
 MSVOA_V
 ClientSampleId :

Quant Time: Sep 20 04:18:42 2024
 Quant Method : Z:\voasrv\HPCHEM1\MSVOA_V\Method\SFAMVTR091024WMA.M
 Quant Title : TRACE VOA SFAM1.0
 QLast Update : Fri Sep 20 03:11:07 2024
 Response via : Initial Calibration

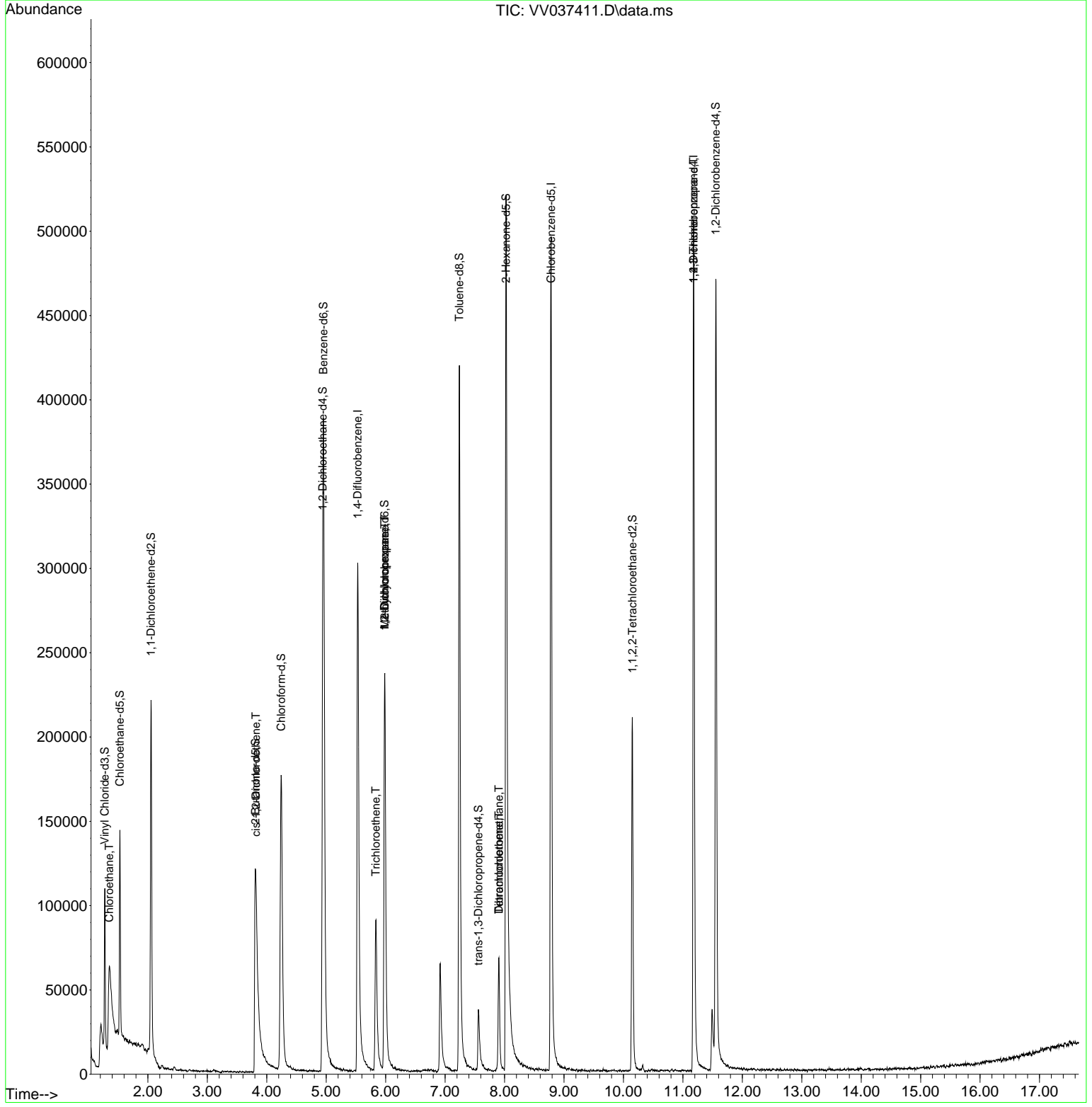
Compound	R.T.	QI on	Response	Conc	Units	Dev(Min)
Internal Standards						
1) 1,4-Difluorobenzene	5.529	114	287018	5.000	ug/L	0.00
28) Chlorobenzene-d5	8.783	117	299156	5.000	ug/L	0.00
58) 1,4-Dichlorobenzene-d4	11.181	152	136262	5.000	ug/L	0.00
System Monitoring Compounds						
4) Vinyl Chloride-d3	1.275	65	61677	3.663	ug/L	0.00
Spike Amount	5.000	Range	40 - 130	Recovery	=	73.200%
7) Chloroethane-d5	1.529	69	78197	4.454	ug/L	0.00
Spike Amount	5.000	Range	65 - 130	Recovery	=	89.000%
11) 1,1-Dichloroethene-d2	2.053	65	33455	3.847	ug/L	0.00
Spike Amount	5.000	Range	60 - 125	Recovery	=	77.000%
20) 2-Butanone-d5	3.809	46	263196	52.301	ug/L	0.00
Spike Amount	50.000	Range	40 - 130	Recovery	=	104.600%
24) Chloroform-d	4.243	84	199069	4.869	ug/L	0.00
Spike Amount	5.000	Range	70 - 125	Recovery	=	97.400%
26) 1,2-Dichloroethane-d4	4.940	65	99503	5.198	ug/L	0.00
Spike Amount	5.000	Range	70 - 130	Recovery	=	104.000%
32) Benzene-d6	4.953	84	371404	4.630	ug/L	0.00
Spike Amount	5.000	Range	70 - 125	Recovery	=	92.600%
36) 1,2-Dichloropropane-d6	5.982	67	124365	4.986	ug/L	0.00
Spike Amount	5.000	Range	60 - 140	Recovery	=	99.800%
41) Toluene-d8	7.239	98	302722	4.189	ug/L	0.00
Spike Amount	5.000	Range	70 - 130	Recovery	=	83.800%
43) trans-1,3-Dichloropropene	7.561	79	27695	3.375	ug/L	0.00
Spike Amount	5.000	Range	55 - 130	Recovery	=	67.600%
46) 2-Hexanone-d5	8.024	63	214530	53.516	ug/L	0.00
Spike Amount	50.000	Range	45 - 130	Recovery	=	107.040%
56) 1,1,2,2-Tetrachloroethene	10.149	84	110022	5.412	ug/L	0.00
Spike Amount	5.000	Range	65 - 120	Recovery	=	108.200%
66) 1,2-Dichlorobenzene-d4	11.554	152	128671	5.311	ug/L	0.00
Spike Amount	5.000	Range	80 - 120	Recovery	=	106.200%
Target Compounds						
8) Chloroethane	1.352	64	150714	8.964	ug/L #	51
22) cis-1,2-Dichloroethene	3.818	96	4829	0.211	ug/L	86
34) Trichloroethene	5.834	95	35260	1.452	ug/L	96
35) Methylcyclohexane	5.985	83	30172	0.817	ug/L #	19
37) 1,2-Dichloropropane	5.985	63	13756	0.600	ug/L #	88
47) Tetrachloroethene	7.905	164	16242	0.934	ug/L	96
49) Dibromochloromethane	7.905	129	13401	0.779	ug/L #	10
61) 1,2,3-Trichloropropane	11.181	75	18192	1.467	ug/L #	68

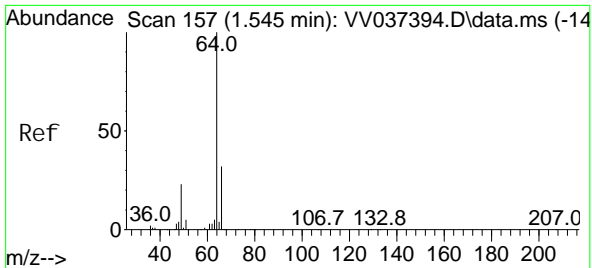
(#) = qualifier out of range (m) = manual integration (+) = signals summed

Data Path : Z:\voasrv\HPCHEM1\MSVOA_V\DATA\VV091924\
 Data File : VV037411.D
 Acq On : 20 Sep 2024 03:31
 Operator : SY/MD
 Sample : P3994-10
 Misc : 25mL/MSVOA_V/WATER
 ALS Vial : 1 Sample Multiplier: 1

Instrument :
 MSVOA_V
 ClientSampleId :

Quant Time: Sep 20 04:18:42 2024
 Quant Method : Z:\voasrv\HPCHEM1\MSVOA_V\Method\SFAMVTR091024WMA.M
 Quant Title : TRACE VOA SFAM1.0
 QLast Update : Fri Sep 20 03:11:07 2024
 Response via : Initial Calibration

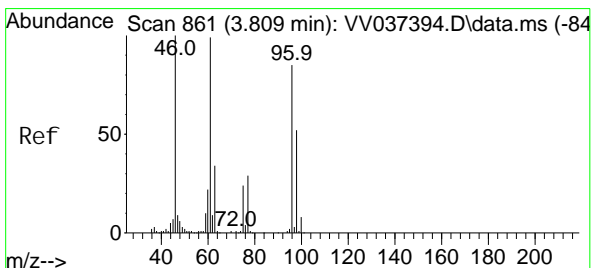
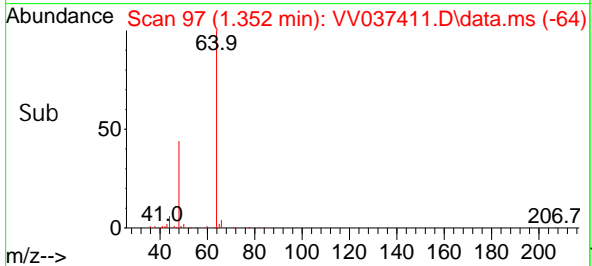
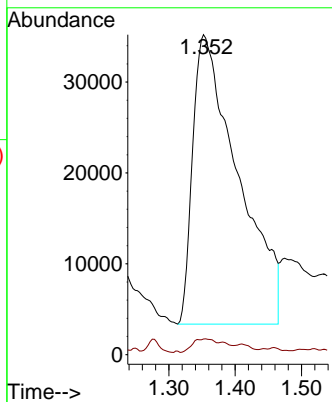
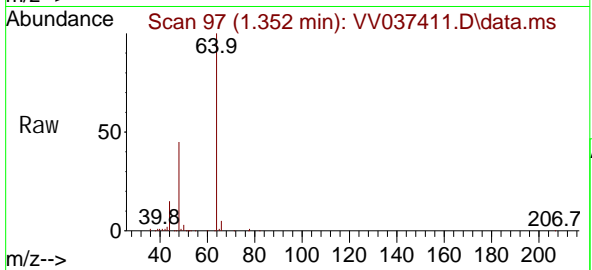




#8
 Chloroethane
 Concen: 8.964 ug/L
 RT: 1.352 min Scan# 91
 Delta R.T. -0.193 min
 Lab File: VV037411.D
 Acq: 20 Sep 2024 03:31

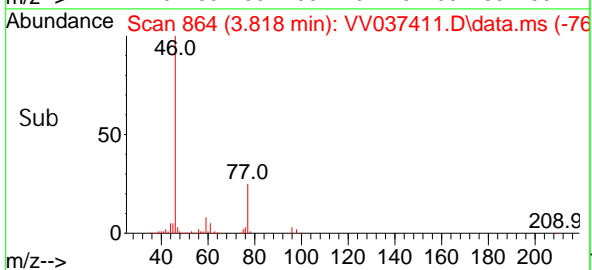
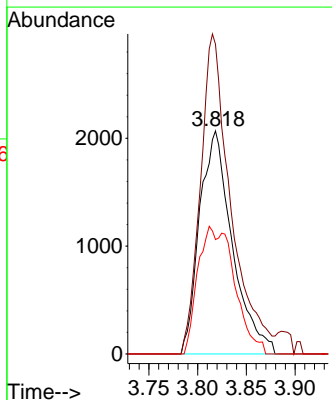
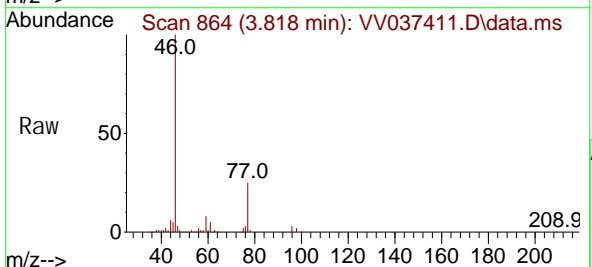
Instrument :
 MSVOA_V
 ClientSampleId :

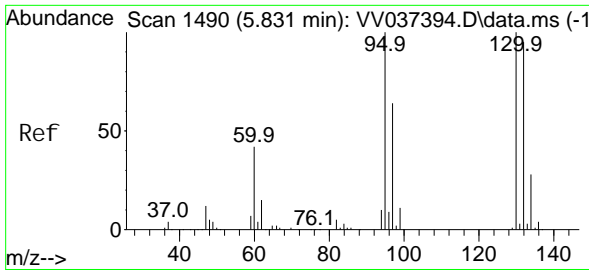
Tgt Ion: 64 Resp: 150714
 Ion Ratio Lower Upper
 64 100
 66 4.9 22.7 42.1#



#22
 cis-1,2-Dichloroethene
 Concen: 0.211 ug/L
 RT: 3.818 min Scan# 864
 Delta R.T. 0.010 min
 Lab File: VV037411.D
 Acq: 20 Sep 2024 03:31

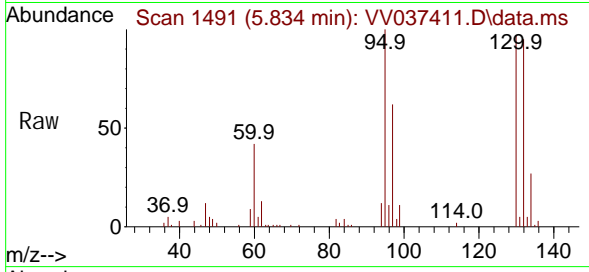
Tgt Ion: 96 Resp: 4829
 Ion Ratio Lower Upper
 96 100
 61 138.9 87.6 162.6
 98 51.3 44.9 83.5



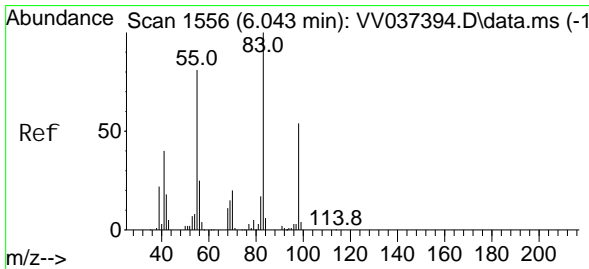
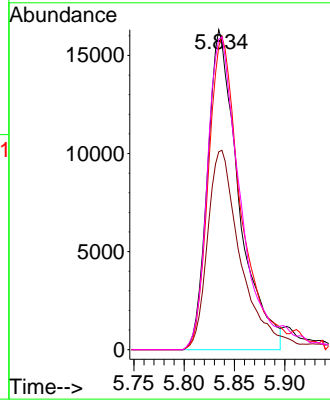
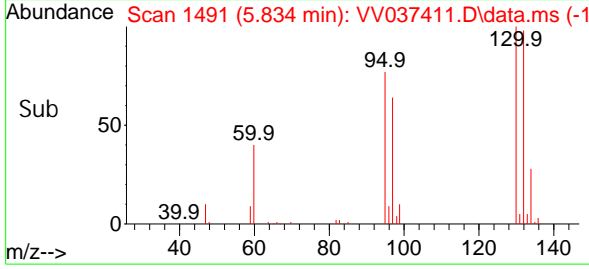


#34
 Trichloroethene
 Concen: 1.452 ug/L
 RT: 5.834 min Scan# 1490
 Delta R.T. 0.003 min
 Lab File: VV037411.D
 Acq: 20 Sep 2024 03:31

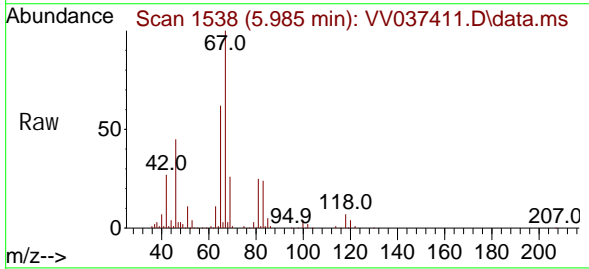
Instrument : MSVOA_V
 ClientSampleId :



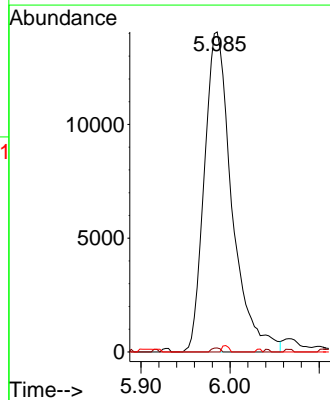
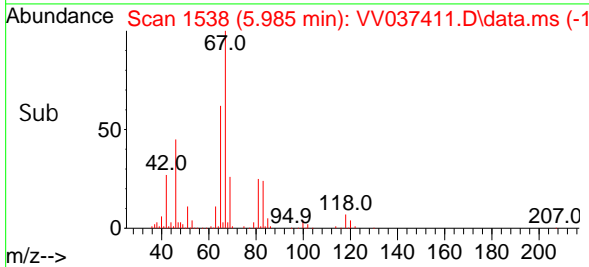
Tgt Ion: 95 Resp: 35260
 Ion Ratio Lower Upper
 95 100
 97 61.9 46.5 86.5
 132 94.7 65.5 121.7
 130 97.1 71.3 132.3

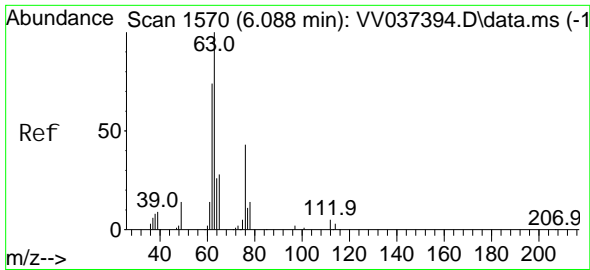


#35
 Methyl cycl ohexane
 Concen: 0.817 ug/L
 RT: 5.985 min Scan# 1538
 Delta R.T. -0.058 min
 Lab File: VV037411.D
 Acq: 20 Sep 2024 03:31



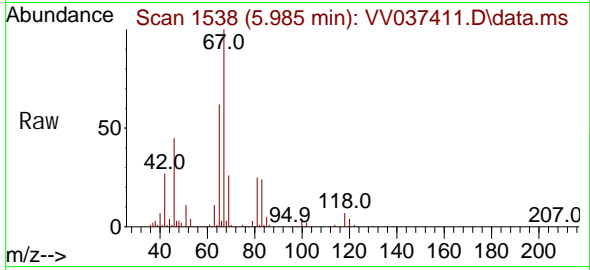
Tgt Ion: 83 Resp: 30172
 Ion Ratio Lower Upper
 83 100
 55 0.4 60.3 90.5#
 98 0.5 38.2 57.4#



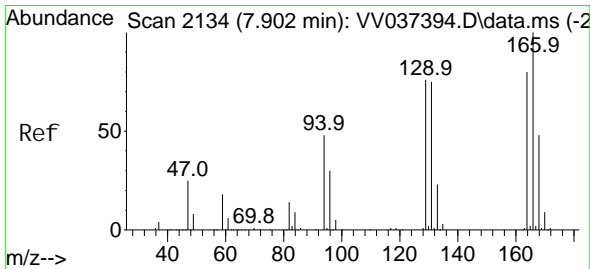
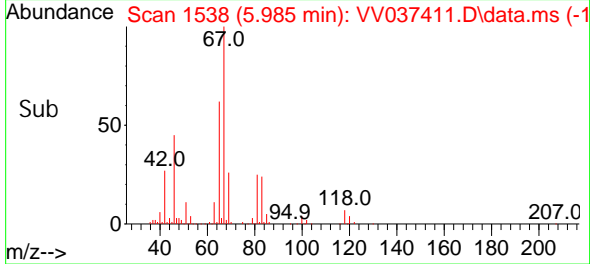
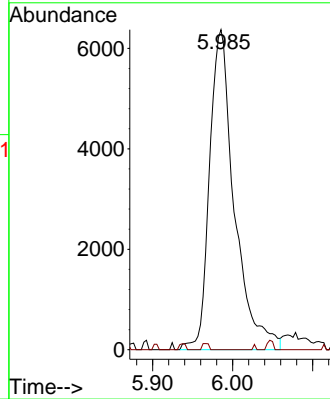


#37
 1, 2-Di chl oropropane
 Concen: 0.600 ug/L
 RT: 5.985 min Scan# 111
 Delta R.T. -0.103 min
 Lab File: VV037411.D
 Acq: 20 Sep 2024 03:31

Instrument : MSVOA_V
 ClientSampleId :

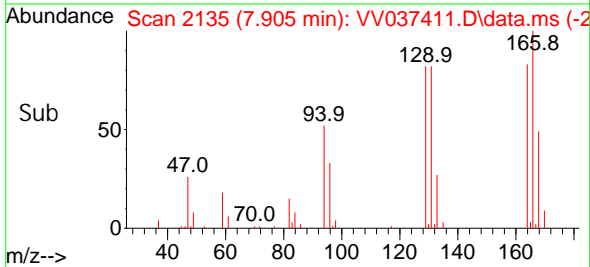
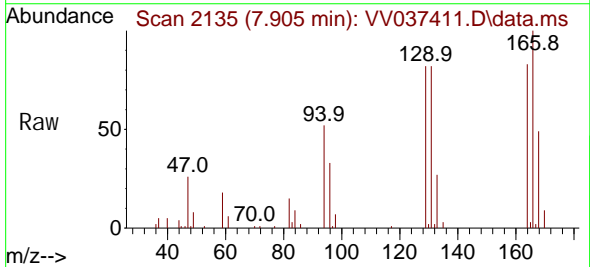
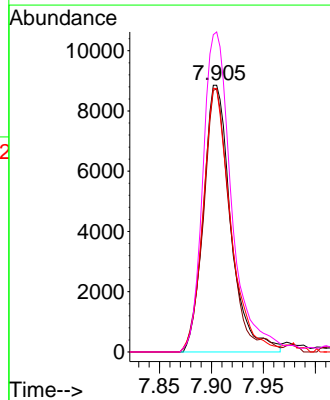


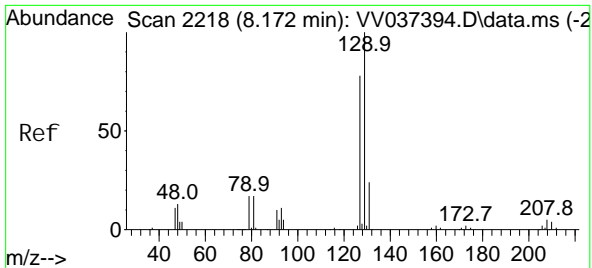
Tgt Ion: 63 Resp: 13756
 Ion Ratio Lower Upper
 63 100
 112 0.5 3.7 5.5#



#47
 Tetrachloroethene
 Concen: 0.934 ug/L
 RT: 7.905 min Scan# 2135
 Delta R.T. 0.003 min
 Lab File: VV037411.D
 Acq: 20 Sep 2024 03:31

Tgt Ion: 164 Resp: 16242
 Ion Ratio Lower Upper
 164 100
 129 98.6 69.2 128.4
 131 98.7 66.6 123.8
 166 120.0 88.8 165.0

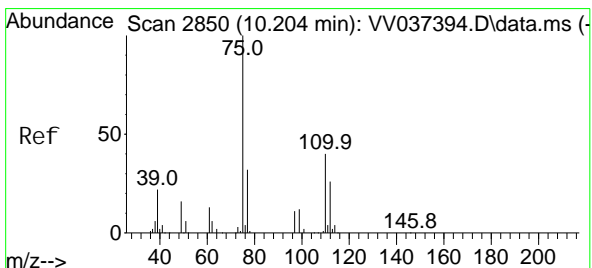
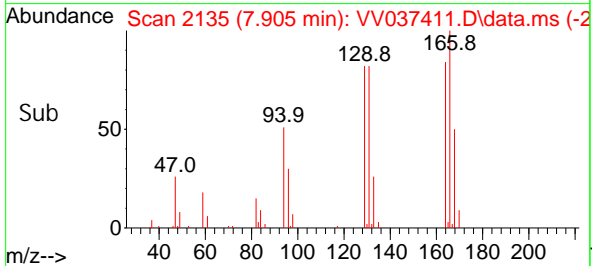
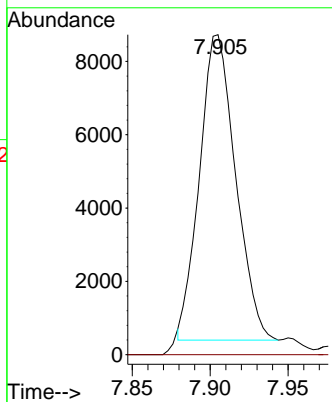
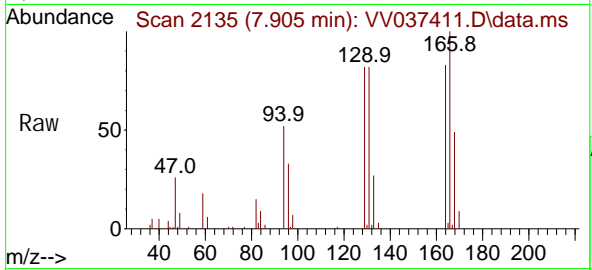




#49
 Di bromochloromethane
 Concen: 0.779 ug/L
 RT: 7.905 min Scan# 2135
 Delta R.T. -0.267 min
 Lab File: VV037411.D
 Acq: 20 Sep 2024 03:31

Instrument : MSVOA_V
 ClientSampleId :

Tgt Ion: 129 Resp: 13401
 Ion Ratio Lower Upper
 129 100
 127 0.0 54.5 101.1#



#61
 1,2,3-Tri chloropropane
 Concen: 1.467 ug/L
 RT: 11.181 min Scan# 3154
 Delta R.T. 0.977 min
 Lab File: VV037411.D
 Acq: 20 Sep 2024 03:31

Tgt Ion: 75 Resp: 18192
 Ion Ratio Lower Upper
 75 100
 77 31.7 25.6 38.4
 110 2.9 31.0 46.4#

