

Data File : VV007672.D  
 Acq On : 20 Sep 2018 23:15  
 Operator : SY/MD  
 Sample : J4989-10  
 Misc : 25.0 mL/MSVOA\_V/WATER  
 ALS Vial : 31 Sample Multiplier: 1

Instrument :  
 MSVOA\_V  
 ClientSampleId :  
 ET0S2

Quant Time: Sep 21 03:29:58 2018  
 Quant Method : Z:\VOASRV\HPCHEM1\MSVOA\_V\METHOD\SOMVTR091918WMA.M  
 Quant Title : TRACE VOA SOM01.0  
 QLast Update : Fri Sep 21 03:27:29 2018  
 Response via : Initial Calibration

Internal Standards	R.T.	QIon	Response	Conc	Units	Dev(Min)
1) 1,4-Difluorobenzene	5.67	114	111510	5.00	ug/L	0.00
28) Chlorobenzene-d5	8.90	117	102268	5.00	ug/L	0.00
60) 1,4-Dichlorobenzene-d4	11.30	152	54702	5.00	ug/L	0.00

System Monitoring Compounds

4) Vinyl Chloride-d3	1.32	65	19053	4.16	ug/L	0.00
Spiked Amount	5.000	Range	40 - 130	Recovery	=	83.20%
7) Chloroethane-d5	1.58	69	19446	4.52	ug/L	0.00
Spiked Amount	5.000	Range	65 - 130	Recovery	=	90.40%
11) 1,1-Dichloroethene-d2	2.13	63	35877	2.95	ug/L	0.00
Spiked Amount	5.000	Range	60 - 125	Recovery	=	59.00%#
20) 2-Butanone-d5	3.97	46	53403	45.68	ug/L	0.00
Spiked Amount	50.000	Range	40 - 130	Recovery	=	91.36%
24) Chloroform-d	4.41	84	46229	4.23	ug/L	0.00
Spiked Amount	5.000	Range	70 - 125	Recovery	=	84.60%
26) 1,2-Dichloroethane-d4	5.09	65	25195	4.66	ug/L	0.00
Spiked Amount	5.000	Range	70 - 130	Recovery	=	93.20%
32) Benzene-d6	5.10	84	91309	4.50	ug/L	0.00
Spiked Amount	5.000	Range	70 - 125	Recovery	=	90.00%
36) 1,2-Dichloropropane-d6	6.12	67	27240	4.55	ug/L	0.00
Spiked Amount	5.000	Range	60 - 140	Recovery	=	91.00%
41) Toluene-d8	7.36	98	89913	4.30	ug/L	0.00
Spiked Amount	5.000	Range	70 - 130	Recovery	=	86.00%
43) trans-1,3-Dichloropropene-	7.67	79	9394	3.90	ug/L	0.00
Spiked Amount	5.000	Range	55 - 130	Recovery	=	78.00%
46) 2-Hexanone-d5	8.14	63	37527	40.04	ug/L	0.00
Spiked Amount	50.000	Range	45 - 130	Recovery	=	80.08%
57) 1,1,2,2-Tetrachloroethane-	10.27	84	21142	4.26	ug/L	0.00
Spiked Amount	5.000	Range	65 - 120	Recovery	=	85.20%
64) 1,2-Dichlorobenzene-d4	11.68	152	40652	4.50	ug/L	0.00
Spiked Amount	5.000	Range	80 - 120	Recovery	=	90.00%

Target Compounds

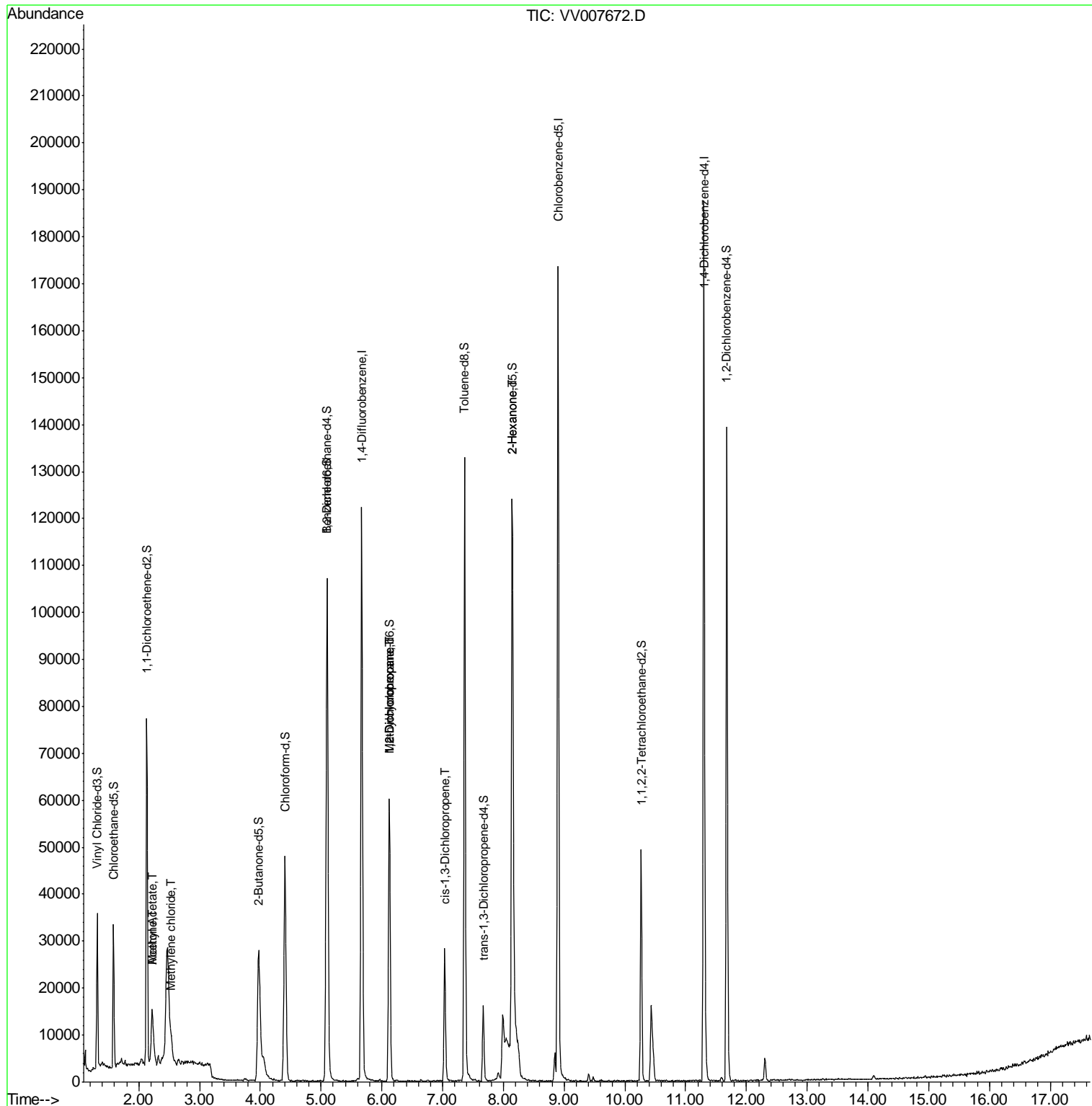
						Qvalue
13) Acetone	2.22	43	18991	16.862	ug/L	100
15) Methyl Acetate	2.22	43	18712	6.739	ug/L #	49
16) Methylene chloride	2.54	84	1115	0.135	ug/L	87
35) Methylcyclohexane	6.12	83	7101	0.576	ug/L #	20
37) 1,2-Dichloropropane	6.12	63	3297	0.503	ug/L #	85
39) cis-1,3-Dichloropropene	7.04	75	821	0.087	ug/L #	76
48) 2-Hexanone	8.14	43	7093	2.823	ug/L #	92

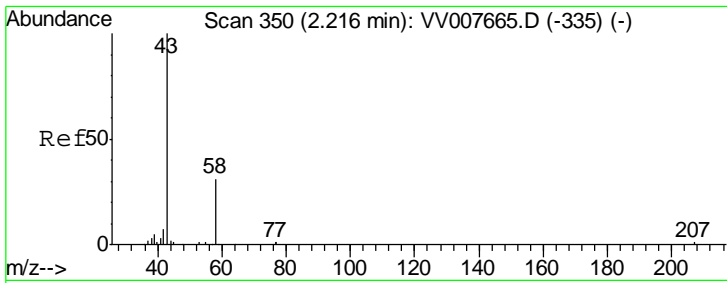
(#) = qualifier out of range (m) = manual integration (+) = signals summed

Data File : VV007672.D  
Acq On : 20 Sep 2018 23:15  
Operator : SY/MD  
Sample : J4989-10  
Misc : 25.0 mL/MSVOA\_V/WATER  
ALS Vial : 31 Sample Multiplier: 1

Instrument :  
MSVOA\_V  
Client Sampled :  
ET0S2

Quant Time: Sep 21 03:29:58 2018  
Quant Method : Z:\VOASRV\HPCHEM1\MSVOA\_V\METHOD\SOMVTR091918WMA.M  
Quant Title : TRACE VOA SOM01.0  
QLast Update : Fri Sep 21 03:27:29 2018  
Response via : Initial Calibration

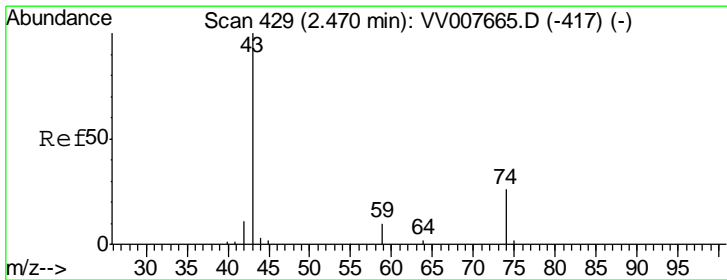
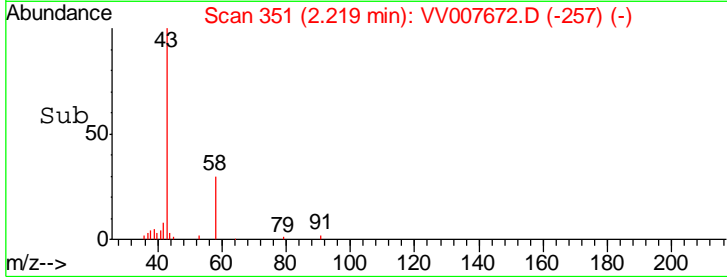
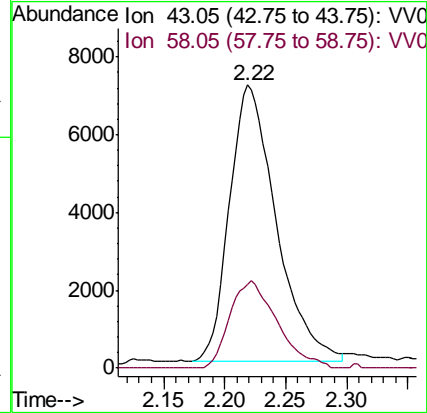
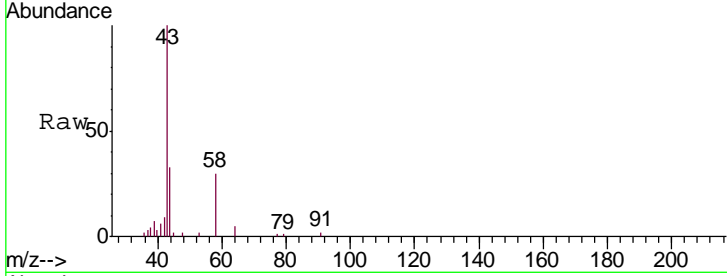




#13  
 Acetone  
 Concen: 16.862 ug/L  
 RT: 2.22 min Scan# 351  
 Delta R.T. 0.00 min  
 Lab File: VV007672.D  
 Acq: 20 Sep 2018 23:15

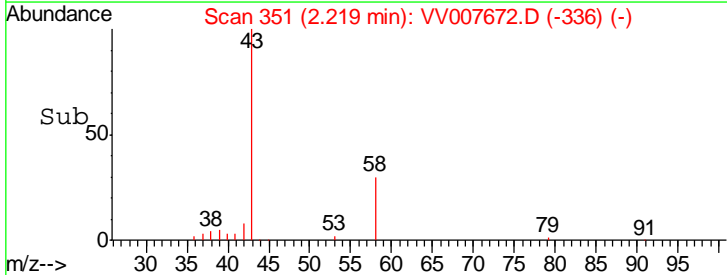
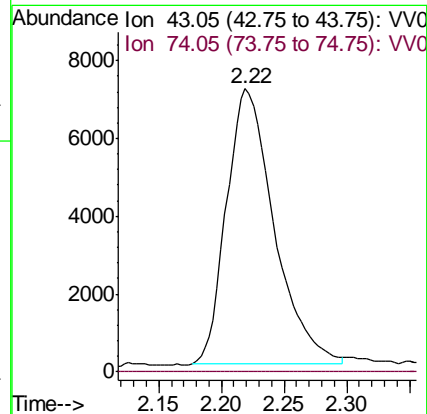
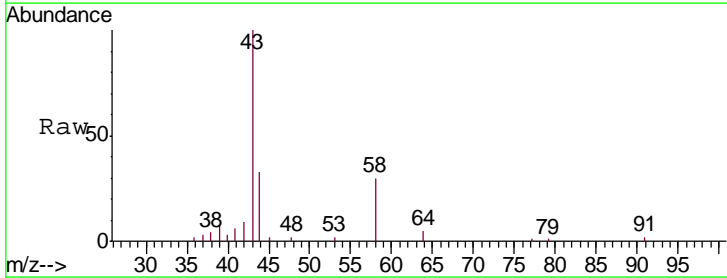
Instrument :  
 MSVOA\_V  
 ClientSampled :  
 ET0S2

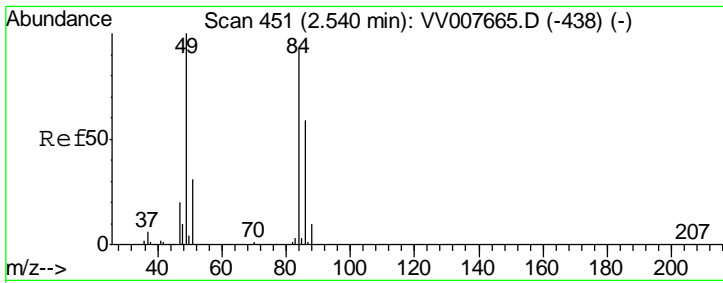
Tgt Ion: 43 Resp: 18991  
 Ion Ratio Lower Upper  
 43 100  
 58 31.9 0.0 63.6



#15  
 Methyl Acetate  
 Concen: 6.739 ug/L  
 RT: 2.22 min Scan# 351  
 Delta R.T. -0.25 min  
 Lab File: VV007672.D  
 Acq: 20 Sep 2018 23:15

Tgt Ion: 43 Resp: 18712  
 Ion Ratio Lower Upper  
 43 100  
 74 0.0 20.6 30.8#

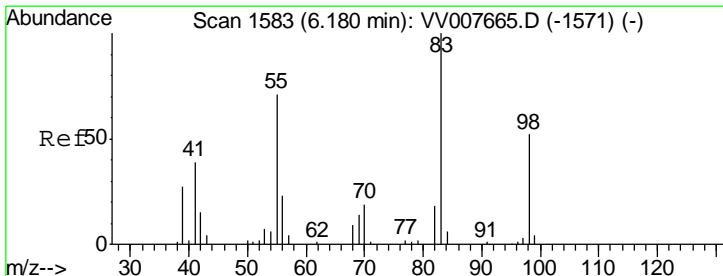
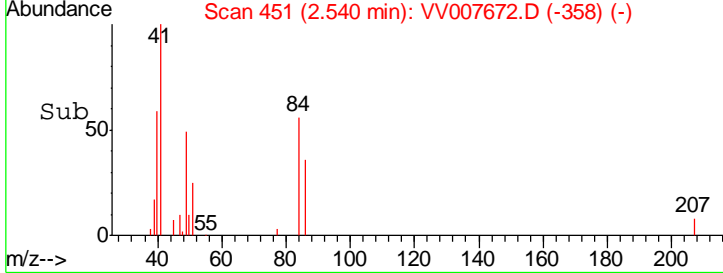
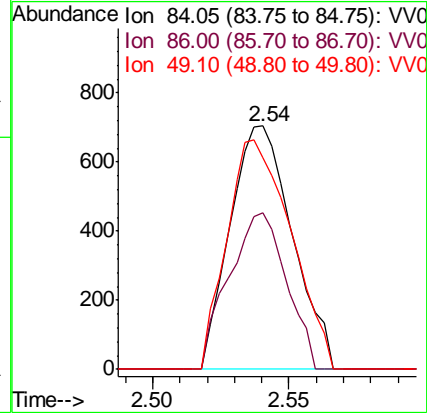
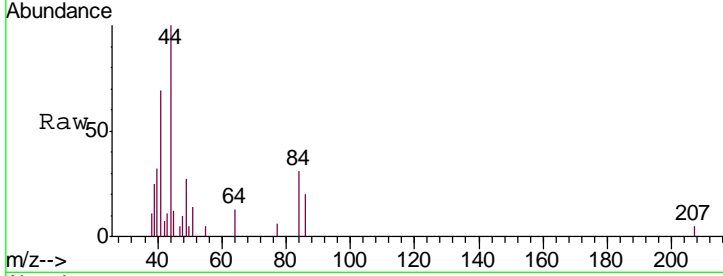




#16  
 Methylene chloride  
 Concen: 0.135 ug/L  
 RT: 2.54 min Scan# 451  
 Delta R.T. 0.00 min  
 Lab File: VV007672.D  
 Acq: 20 Sep 2018 23:15

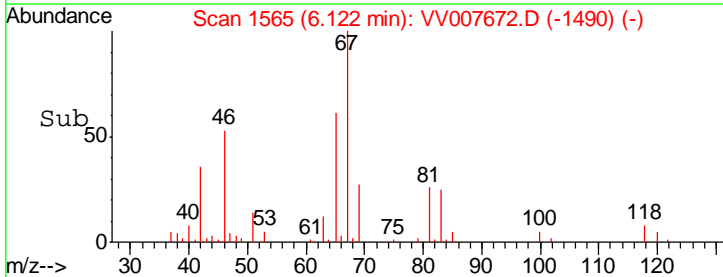
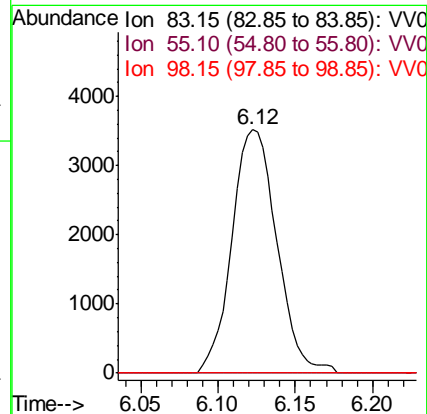
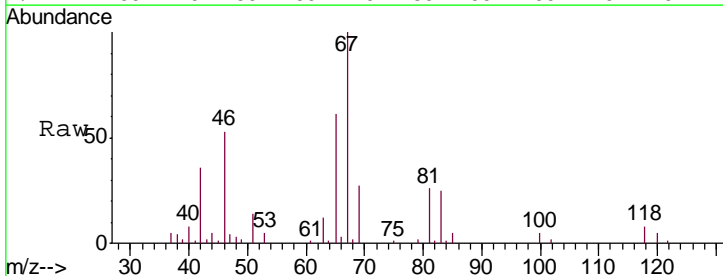
Instrument :  
 MSVOA\_V  
 ClientSampled :  
 ET0S2

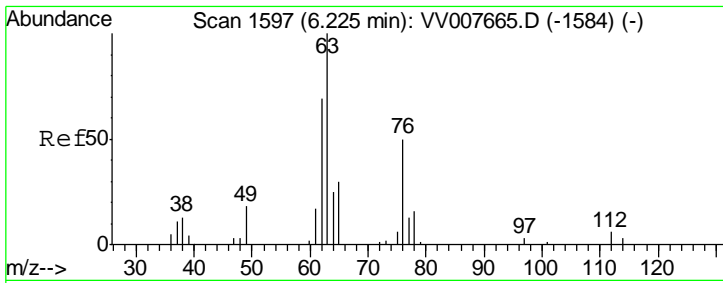
Tgt Ion	Resp	Lower	Upper
84	1115		
84	100		
86	64.5	46.1	85.5
49	87.0	75.5	140.1



#35  
 Methylcyclohexane  
 Concen: 0.576 ug/L  
 RT: 6.12 min Scan# 1565  
 Delta R.T. -0.06 min  
 Lab File: VV007672.D  
 Acq: 20 Sep 2018 23:15

Tgt Ion	Resp	Lower	Upper
83	7101		
83	100		
55	0.0	54.8	82.2#
98	0.0	40.7	61.1#

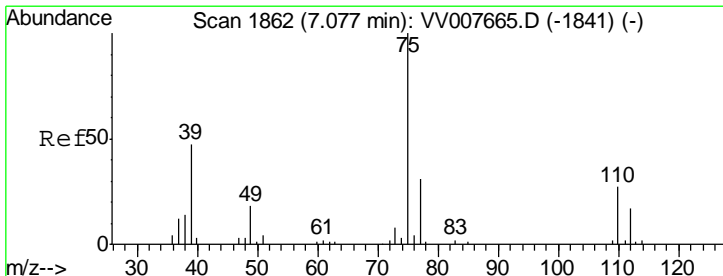
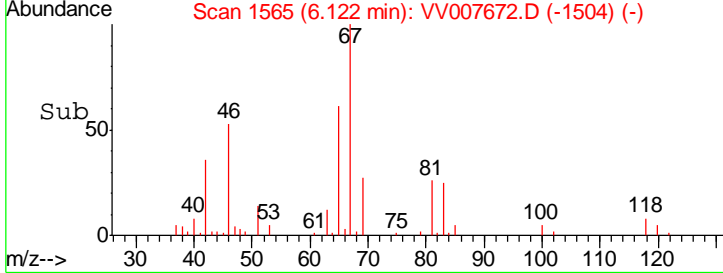
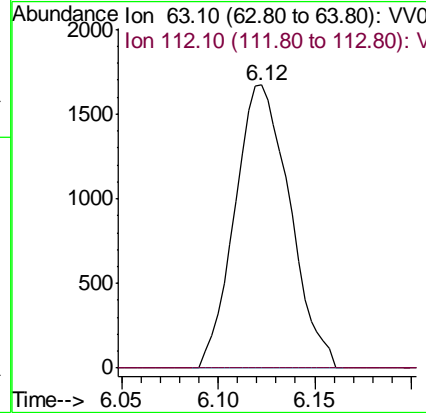
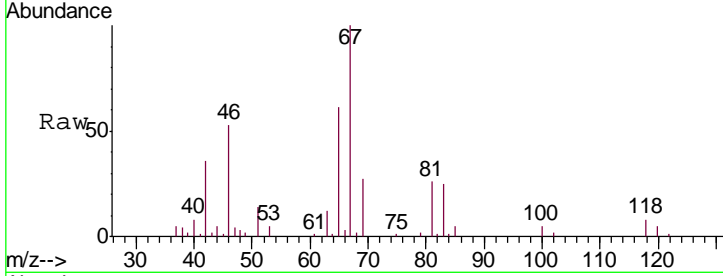




#37  
 1,2-Dichloropropane  
 Concen: 0.503 ug/L  
 RT: 6.12 min Scan# 1565  
 Delta R.T. -0.10 min  
 Lab File: VV007672.D  
 Acq: 20 Sep 2018 23:15

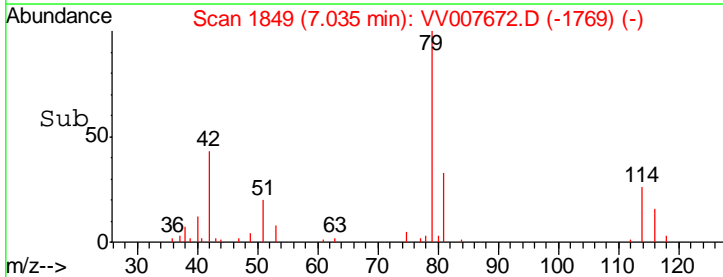
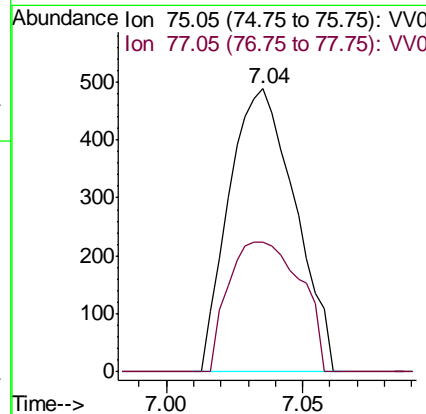
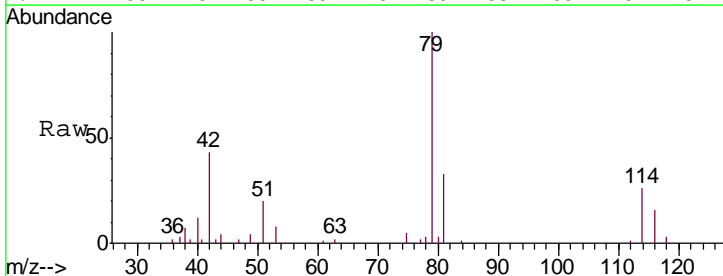
Instrument : MSVOA\_V  
 ClientSampled : ETOS2

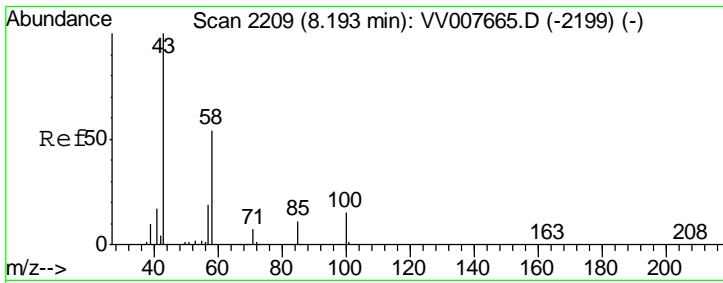
Tgt Ion: 63 Resp: 3297  
 Ion Ratio Lower Upper  
 63 100  
 112 0.0 3.9 5.9#



#39  
 cis-1,3-Dichloropropene  
 Concen: 0.087 ug/L  
 RT: 7.04 min Scan# 1849  
 Delta R.T. -0.04 min  
 Lab File: VV007672.D  
 Acq: 20 Sep 2018 23:15

Tgt Ion: 75 Resp: 821  
 Ion Ratio Lower Upper  
 75 100  
 77 45.7 22.7 42.3#



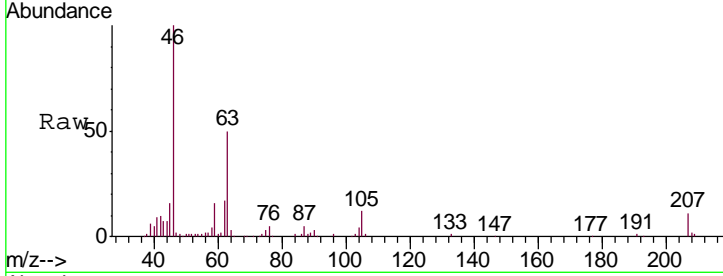


#48  
 2-Hexanone  
 Concen: 2.823 ug/L  
 RT: 8.14 min Scan# 2194  
 Delta R.T. -0.05 min  
 Lab File: VV007672.D  
 Acq: 20 Sep 2018 23:15

Instrument : MSVOA\_V  
 ClientSampleId : ET0S2

Tgt Ion: 43 Resp: 7093

Ion	Ratio	Lower	Upper
43	100		
58	55.5	45.3	67.9
57	24.0	16.6	24.8
100	0.0	11.4	17.0#



Abundance Ion 43.05 (42.75 to 43.75): VV0  
 Ion 58.05 (57.75 to 58.75): VV0  
 Ion 57.20 (56.90 to 57.90): VV0  
 Ion 100.15 (99.85 to 100.85): VV0

