

Data Path : Z:\voasrv\HPCHEM1\MSVOA_V\Data\VV092021\
 Data File : VV022256.D
 Acq On : 21 Sep 2021 01:03
 Operator : SY/MD
 Sample : M3788-18
 Misc : 5.0mL/MSVOA_V/WATER
 ALS Vial : 39 Sample Multiplier: 1

Instrument :
 MSVOA_V
 ClientSampleId :
 C0CM4

Integration Parameters: LSCINT.P
 Integrator: RTE
 Smoothing : OFF Filtering: 5
 Sampling : 1 Min Area: 0 % of largest Peak
 Start Thrs: 0.2 Max Peaks: 100
 Stop Thrs : 0 Peak Location: TOP

If leading or trailing edge < 100 prefer < Baseline drop else tangent >
 Peak separation: 5

Method : Z:\voasrv\HPCHEM1\MSVOA_V\Method\SFAMVLM082721WMA.M
 Title : VOC Analysis

Signal : TIC: VV022256.D\data.ms

peak #	R.T. min	first scan	max scan	last scan	PK TY	peak height	corr. area	corr. % max.	% of total
1	1.304	76	82	99	rVB	149305	154628	14.46%	1.877%
2	1.565	156	163	177	rVB	128973	148015	13.85%	1.797%
3	2.105	321	331	344	rBV	268476	391082	36.58%	4.748%
4	2.581	477	479	482	rBV	274	142	0.01%	0.002%
5	2.671	504	507	509	rVB2	393	216	0.02%	0.003%
6	2.690	509	513	514	rBV	248	133	0.01%	0.002%
7	2.700	514	516	519	rVV2	219	116	0.01%	0.001%
8	2.851	559	563	564	rBV	329	221	0.02%	0.003%
9	2.992	604	607	608	rBV	278	136	0.01%	0.002%
10	3.018	613	615	617	rBV2	190	100	0.01%	0.001%
11	3.134	649	651	654	rVB	224	107	0.01%	0.001%
12	3.233	680	682	686	rVB2	357	180	0.02%	0.002%
13	3.343	714	716	718	rBV2	257	92	0.01%	0.001%
14	3.442	745	747	750	rBV	208	144	0.01%	0.002%
15	3.494	761	763	769	rVB2	329	222	0.02%	0.003%
16	3.523	769	772	773	rBV2	209	120	0.01%	0.001%
17	3.532	773	775	779	rBV2	193	152	0.01%	0.002%
18	3.664	813	816	818	rBV	302	241	0.02%	0.003%
19	3.741	837	840	844	rVV	222	134	0.01%	0.002%
20	3.912	881	893	933	rBV	62029	251474	23.52%	3.053%
21	4.349	1015	1029	1054	rBV	166348	411707	38.51%	4.998%
22	4.606	1098	1109	1110	rBV7	3166	4006	0.37%	0.049%
23	4.719	1140	1144	1147	rVB3	355	256	0.02%	0.003%
24	4.744	1147	1152	1154	rBV2	410	338	0.03%	0.004%
25	4.783	1162	1164	1168	rBV2	256	104	0.01%	0.001%
26	4.809	1168	1172	1178	rBV3	496	475	0.04%	0.006%
27	4.879	1190	1194	1196	rBV2	309	258	0.02%	0.003%
28	4.986	1224	1227	1230	rBV2	410	236	0.02%	0.003%
29	5.050	1230	1247	1279	rBV2	418097	1069004	100.00%	12.978%
30	5.362	1342	1344	1347	rBV2	319	246	0.02%	0.003%
31	5.394	1353	1354	1356	rVB2	411	100	0.01%	0.001%
32	5.465	1373	1376	1378	rBV2	322	216	0.02%	0.003%
33	5.500	1383	1387	1388	rVV2	327	170	0.02%	0.002%
34	5.555	1402	1404	1406	rBV	190	98	0.01%	0.001%
35	5.619	1412	1424	1455	rBV	336546	685236	64.10%	8.319%
36	5.802	1479	1481	1484	rBV	479	235	0.02%	0.003%

Data Path : Z:\voasrv\HPCHEM1\MSVOA_V\Data\VW092021\
 Data File : VW022256.D
 Acq On : 21 Sep 2021 01:03
 Operator : SY/MD
 Sample : M3788-18
 Misc : 5.0mL/MSVOA_V/WATER
 ALS Vial : 39 Sample Multiplier: 1

Instrument :
 MSVOA_V
 ClientSampleID :
 C0CM4

Integration Parameters: LSCINT.P

Integrator: RTE
 Smoothing : OFF Filtering: 5
 Sampling : 1 Min Area: 0 % of largest Peak
 Start Thrs: 0.2 Max Peaks: 100
 Stop Thrs : 0 Peak Location: TOP

If leading or trailing edge < 100 prefer < Baseline drop else tangent >
 Peak separation: 5

Method : Z:\voasrv\HPCHEM1\MSVOA_V\Method\SFAMVLM082721WMA.M
 Title : VOC Analysis

37	5.915	1502	1516	1538	rBV5	121608	271792	25.42%	3.300%
38	6.072	1551	1565	1590	rBV	232700	478557	44.77%	5.810%
39	6.304	1635	1637	1641	rVB	403	243	0.02%	0.003%
40	6.333	1641	1646	1648	rVB2	384	351	0.03%	0.004%
41	6.349	1648	1651	1653	rBV2	366	270	0.03%	0.003%
42	6.426	1673	1675	1679	rVB	444	262	0.02%	0.003%
43	6.449	1680	1682	1685	rVB2	269	131	0.01%	0.002%
44	6.558	1712	1716	1718	rBV	285	229	0.02%	0.003%
45	6.609	1728	1732	1734	rBV	357	238	0.02%	0.003%
46	6.667	1744	1750	1755	rBV3	301	320	0.03%	0.004%
47	6.732	1766	1770	1771	rBV	203	142	0.01%	0.002%
48	6.870	1810	1813	1814	rBV	201	114	0.01%	0.001%
49	6.989	1838	1850	1877	rBV	111040	208189	19.48%	2.527%
50	7.320	1939	1953	1971	rBV	481707	835431	78.15%	10.142%
51	7.593	2034	2038	2039	rBV	282	212	0.02%	0.003%
52	7.625	2039	2048	2064	rBV2	74546	131581	12.31%	1.597%
53	7.825	2108	2110	2111	rBV2	377	131	0.01%	0.002%
54	7.879	2122	2127	2131	rBV3	426	490	0.05%	0.006%
55	7.963	2151	2153	2154	rBV3	276	114	0.01%	0.001%
56	8.095	2184	2194	2222	rBV2	247924	505743	47.31%	6.140%
57	8.400	2287	2289	2290	rBV2	464	203	0.02%	0.002%
58	8.471	2309	2311	2317	rVB2	323	278	0.03%	0.003%
59	8.622	2357	2358	2360	rBV	253	111	0.01%	0.001%
60	8.651	2363	2367	2370	rBV2	398	378	0.04%	0.005%
61	8.686	2376	2378	2381	rBV	242	114	0.01%	0.001%
62	8.738	2391	2394	2395	rBV	348	130	0.01%	0.002%
63	8.812	2415	2417	2418	rBV	311	94	0.01%	0.001%
64	8.854	2419	2430	2458	rBV	503429	821913	76.89%	9.978%
65	9.040	2486	2488	2490	rBV2	379	153	0.01%	0.002%
66	9.140	2518	2519	2521	rBV2	317	143	0.01%	0.002%
67	9.297	2566	2568	2571	rBV	184	98	0.01%	0.001%
68	9.410	2599	2603	2607	rVB	212	179	0.02%	0.002%
69	9.471	2620	2622	2626	rVB3	291	206	0.02%	0.003%
70	9.577	2653	2655	2657	rBV	459	187	0.02%	0.002%
71	9.690	2688	2690	2691	rBV2	316	141	0.01%	0.002%
72	9.854	2735	2741	2744	rBV4	456	482	0.05%	0.006%
73	9.873	2744	2747	2749	rBV	211	144	0.01%	0.002%
74	9.950	2766	2771	2775	rBV2	271	309	0.03%	0.004%
75	10.101	2814	2818	2820	rBV2	332	272	0.03%	0.003%
76	10.220	2842	2855	2878	rBV	285776	452601	42.34%	5.495%

Data Path : Z:\voasrv\HPCHEM1\MSVOA_V\Data\VW092021\
 Data File : VW022256.D
 Acq On : 21 Sep 2021 01:03
 Operator : SY/MD
 Sample : M3788-18
 Misc : 5.0mL/MSVOA_V/WATER
 ALS Vial : 39 Sample Multiplier: 1

Instrument :
 MSVOA_V
 ClientSampleId :
 C0CM4

Integration Parameters: LSCINT.P

Integrator: RTE
 Smoothing : OFF Filtering: 5
 Sampling : 1 Min Area: 0 % of largest Peak
 Start Thrs: 0.2 Max Peaks: 100
 Stop Thrs : 0 Peak Location: TOP

If leading or trailing edge < 100 prefer < Baseline drop else tangent >
 Peak separation: 5

Method : Z:\voasrv\HPCHEM1\MSVOA_V\Method\SFAMVLM082721WMA.M
 Title : VOC Analysis

77	10.497	2938	2941	2944	rBV2	179	164	0.02%	0.002%
78	10.609	2974	2976	2977	rBV	283	116	0.01%	0.001%
79	10.763	3021	3024	3026	rBV2	256	136	0.01%	0.002%
80	10.837	3044	3047	3048	rBV	254	116	0.01%	0.001%
81	10.918	3067	3072	3082	rBV4	1127	1665	0.16%	0.020%
82	10.992	3091	3095	3097	rBV2	325	259	0.02%	0.003%
83	11.082	3121	3123	3127	rVV2	327	131	0.01%	0.002%
84	11.143	3139	3142	3143	rBV2	682	402	0.04%	0.005%
85	11.204	3158	3161	3162	rBV	253	158	0.01%	0.002%
86	11.252	3164	3176	3199	rVV	453752	703162	65.78%	8.536%
87	11.390	3217	3219	3225	rVB3	1143	858	0.08%	0.010%
88	11.625	3280	3292	3316	rBV	431475	694172	64.94%	8.427%
89	11.818	3350	3352	3356	rVB3	473	275	0.03%	0.003%
90	11.841	3356	3359	3361	rBV2	338	209	0.02%	0.003%
91	12.136	3448	3451	3454	rVB2	308	153	0.01%	0.002%
92	12.246	3481	3485	3488	rBV3	282	244	0.02%	0.003%
93	12.368	3521	3523	3525	rBV2	337	133	0.01%	0.002%
94	12.384	3526	3528	3532	rVB2	541	300	0.03%	0.004%
95	12.673	3610	3618	3620	rBV2	541	528	0.05%	0.006%
96	12.902	3686	3689	3690	rBV2	237	137	0.01%	0.002%
97	13.265	3799	3802	3805	rBV2	298	181	0.02%	0.002%
98	13.969	4018	4021	4023	rBV	339	288	0.03%	0.003%
99	14.033	4038	4041	4044	rBV2	392	254	0.02%	0.003%
100	14.226	4099	4101	4105	rBV2	426	211	0.02%	0.003%

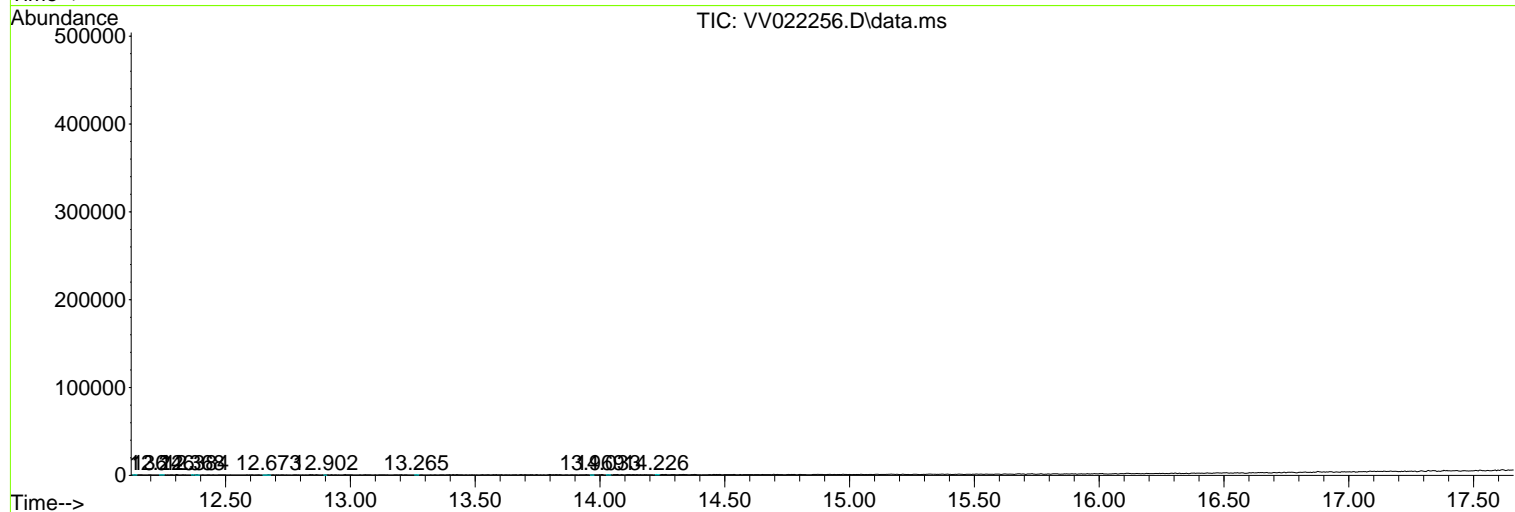
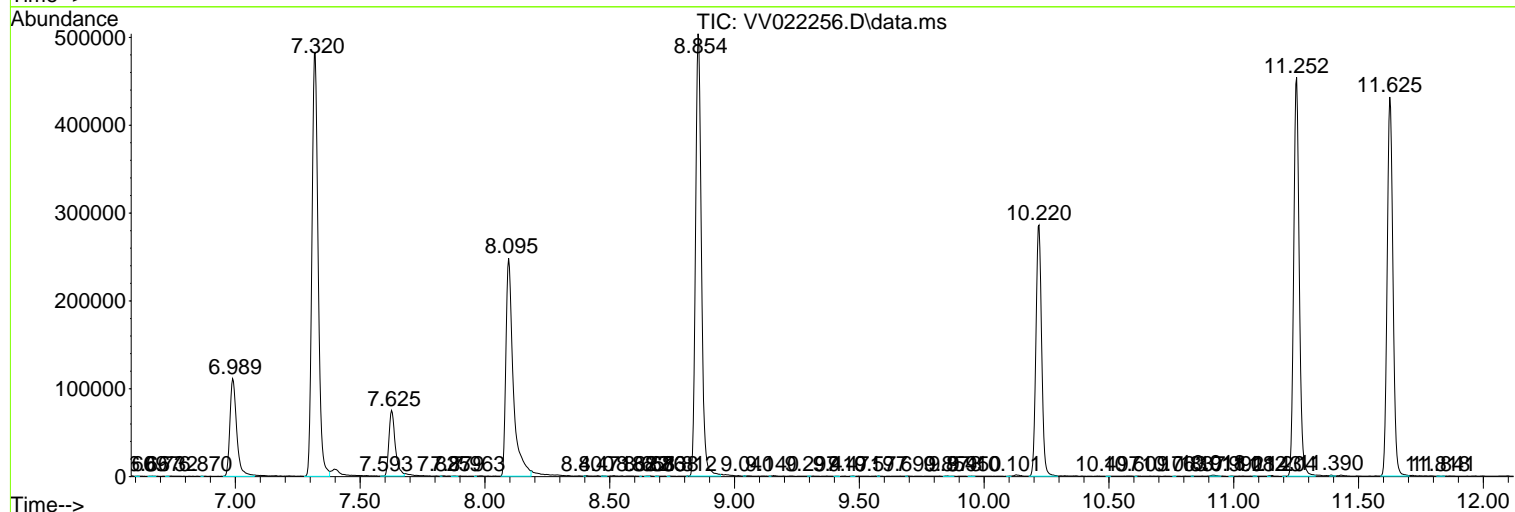
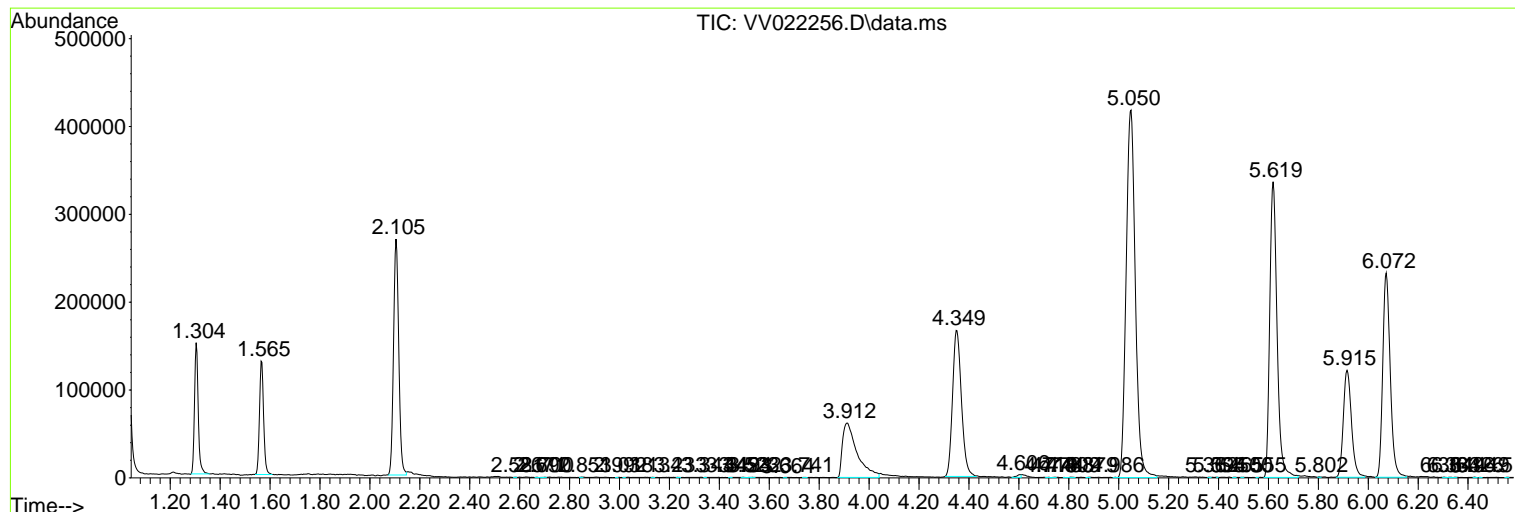
Sum of corrected areas: 8237268

Data Path : Z:\voasrv\HPCHEM1\MSVOA_V\Data\VV092021\
 Data File : VV022256.D
 Acq On : 21 Sep 2021 01:03
 Operator : SY/MD
 Sample : M3788-18
 Misc : 5.0mL/MSVOA_V/WATER
 ALS Vial : 39 Sample Multiplier: 1

Instrument :
 MSVOA_V
 ClientSampled :
 COCM4

Quant Method : Z:\voasrv\HPCHEM1\MSVOA_V\Method\SFAMVLM082721WMA.M
 Quant Title : VOC Analysis

TIC Library : C:\Database\NIST20.L
 TIC Integration Parameters: LSCINT.P



Data Path : Z:\voasrv\HPCHEM1\MSVOA_V\Data\VV092021\
Data File : VV022256.D
Acq On : 21 Sep 2021 01:03
Operator : SY/MD
Sample : M3788-18
Misc : 5.0mL/MSVOA_V/WATER
ALS Vial : 39 Sample Multiplier: 1

Instrument :
MSVOA_V
ClientSampled :
C0CM4

Quant Method : Z:\voasrv\HPCHEM1\MSVOA_V\Method\SFAMVLM082721WMA.M
Quant Title : VOC Analysis

TIC Library : C:\Database\NIST0.L
TIC Integration Parameters: LSCINT.P

No Library Search Compounds Detected

Data Path : Z:\voasrv\HPCHEM1\MSVOA_V\Data\VV092021\
Data File : VV022256.D
Acq On : 21 Sep 2021 01:03
Operator : SY/MD
Sample : M3788-18
Misc : 5.0mL/MSVOA_V/WATER
ALS Vial : 39 Sample Multiplier: 1

Instrument :
MSVOA_V
ClientSampled :
C0CM4

Quant Method : Z:\voasrv\HPCHEM1\MSVOA_V\Method\SFAMVLM082721WMA.M
Quant Title : VOC Analysis

TIC Library : C:\Database\NIST0.L
TIC Integration Parameters: LSCINT.P

TIC Top Hit name	RT	EstConc	Units	Response	--Internal Standard--			
					#	RT	Resp	Conc
