

Data Path : Z:\VOASRV\HPCHEM1\MSVOA U\DATA\VU092220\
 Data File : VU040248.D
 Acq On : 22 Sep 2020 12:40
 Operator : SY/MD
 Sample : VU0922WBL01
 Misc : 25.0mL/MSVOA U/WATER
 ALS Vial : 3 Sample Multiplier: 1

Instrument :
 MSVOA_V
 ClientSampleId :
 VU0922WBL01

Quant Time: Sep 23 08:04:30 2020
 Quant Method : Z:\VOASRV\HPCHEM1\MSVOA U\METHOD\524U091120DW.M
 Quant Title : METHOD 524.2 VOLATILES DRINKING WATER
 QLast Update : Fri Sep 11 13:27:06 2020
 Response via : Initial Calibration

Internal Standards	R.T.	QIon	Response	Conc	Units	Dev(Min)
1) Fluorobenzene	6.13	96	41536	1.00	ug/l	0.00

System Monitoring Compounds

57) 4-Bromofluorobenzene	10.63	95	12937	0.75	ug/l	0.00
Spiked Amount	1.000		Recovery	=	75.00%	
68) 1,2-Dichlorobenzene-d4	12.19	152	13840	0.89	ug/l	0.00
Spiked Amount	1.000		Recovery	=	89.00%	

Target Compounds

						Ovalue
3) Chloromethane	1.53	50	276	0.019	ug/l #	42
5) Bromomethane	1.87	94	238	0.046	ug/l #	72
6) Chloroethane	1.94	64	20	0.002	ug/l #	41
9) 1,1-Dichloroethene	2.60	96	124	0.015	ug/l #	20
13) Acetone	2.65	43	1541	0.254	ug/l #	49
14) Carbon Disulfide	2.80	76	589	0.042	ug/l #	20
15) Methylene Chloride	3.06	84	5676	0.422	ug/l #	92
17) 1,1-Dichloroethane	3.89	63	112	0.005	ug/l #	84
18) 2-Butanone	4.75	43	1386	0.151	ug/l #	78
19) Cyclohexane	5.39	56	82	0.006	ug/l #	19
20) Methylcyclohexane	6.77	83	20	0.002	ug/l #	1
22) cis-1,2-Dichloroethene	4.70	96	50	0.005	ug/l #	1
25) Methyl tert-Butyl Ether	3.39	73	42	0.001	ug/l #	1
27) Chloroform	5.11	83	452	0.020	ug/l #	84
28) 1,1,1-Trichloroethane	5.34	97	46	0.002	ug/l #	43
29) 1,1-Dichloropropene	5.54	75	50	0.062	ug/l #	1
35) Benzene	5.79	78	773	0.019	ug/l #	93
36) 1,2-Dichloroethane	5.81	62	161	0.010	ug/l #	77
37) Trichloroethene	6.55	130	77	0.007	ug/l #	1
45) 4-Methyl-2-Pentanone	7.81	43	5454	0.261	ug/l #	95
46) t-1,4-Dichloro-2-butene	10.83	75	466	0.092	ug/l #	16
49) Toluene	7.99	92	189	0.007	ug/l #	1
50) t-1,3-Dichloropropene	8.22	75	69	0.004	ug/l #	1
51) cis-1,3-Dichloropropene	7.62	75	130	0.008	ug/l #	30
52) 1,1,2-Trichloroethane	8.40	97	20	0.002	ug/l #	15
54) 2-Hexanone	8.70	43	4718	0.319	ug/l #	93
59) Chlorobenzene	9.45	112	679	0.022	ug/l #	88
63) Ethyl Benzene	9.57	91	766	0.015	ug/l #	96
64) m/p-Xylenes	9.68	106	83	0.009	ug/l #	1
65) o-Xylene	10.11	106	155	0.008	ug/l #	13
66) Styrene	10.11	104	271	0.008	ug/l #	59
69) Isopropylbenzene	10.48	105	809	0.016	ug/l #	50
70) 1,1,2,2-Tetrachloroethane	10.79	83	314	0.024	ug/l #	52
71) 1,2,3-Trichloropropane	10.83	75	466	0.046	ug/l #	35
73) n-propylbenzene	11.08	120	310	0.015	ug/l #	1
75) 1,3,5-Trimethylbenzene	11.09	105	746	0.017	ug/l #	94
77) tert-Butylbenzene	11.47	119	120	0.022	ug/l #	25
78) 1,2,4-Trimethylbenzene	11.46	105	1194	0.027	ug/l #	91
79) sec-Butylbenzene	11.46	105	1194	0.027	ug/l #	58
82) 1,3-Dichlorobenzene	11.74	146	989	0.038	ug/l #	74
83) 1,4-Dichlorobenzene	11.83	146	1011	0.040	ug/l #	83

Data Path : Z:\VOASRV\HPCHEM1\MSVOA U\DATA\VU092220\
 Data File : VU040248.D
 Acq On : 22 Sep 2020 12:40
 Operator : SY/MD
 Sample : VU0922WBL01
 Misc : 25.0mL/MSVOA U/WATER
 ALS Vial : 3 Sample Multiplier: 1

Instrument :
 MSVOA_V
 ClientSampleId :
 VU0922WBL01

Quant Time: Sep 23 08:04:30 2020
 Quant Method : Z:\VOASRV\HPCHEM1\MSVOA U\METHOD\524U091120DW.M
 Quant Title : METHOD 524.2 VOLATILES DRINKING WATER
 QLast Update : Fri Sep 11 13:27:06 2020
 Response via : Initial Calibration

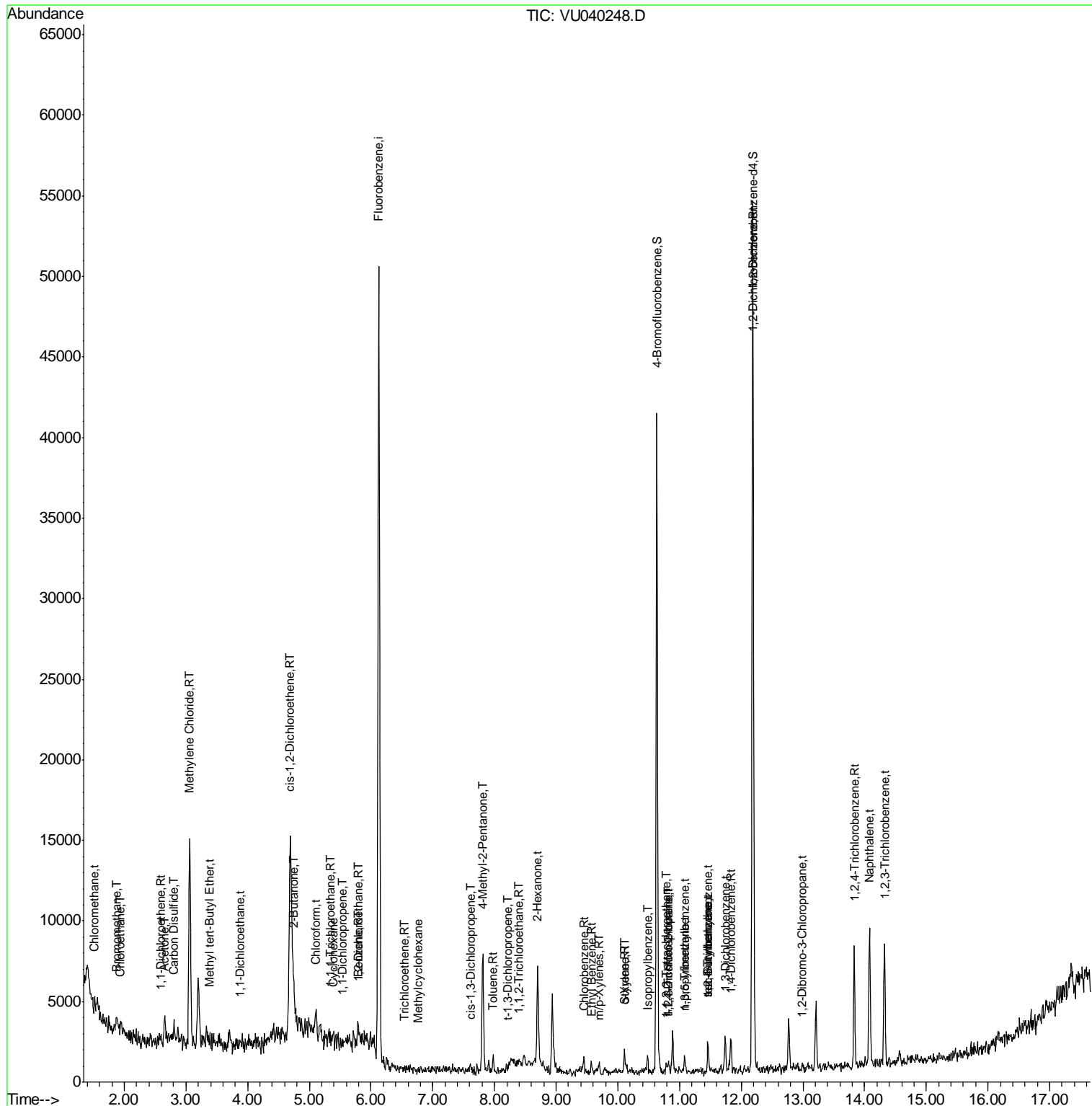
Internal Standards	R.T.	QIon	Response	Conc	Units	Dev(Min)
85) 1,2-Dichlorobenzene	12.20	146	1145	0.047	ug/l	86
86) 1,2-Dibromo-3-Chloropropan	12.99	75	103	0.046	ug/l #	21
87) 1,2,4-Trichlorobenzene	13.83	180	2326	0.166	ug/l	92
89) Naphthalene	14.08	128	7717	0.298	ug/l #	77
90) 1,2,3-Trichlorobenzene	14.32	180	2703	0.203	ug/l	90

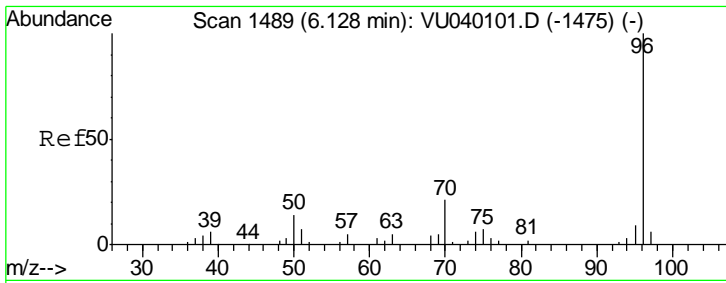
(#) = qualifier out of range (m) = manual integration (+) = signals summed

Data Path : Z:\VOASRV\HPCHEM1\MSVOA U\DATA\VU092220\
 Data File : VU040248.D
 Acq On : 22 Sep 2020 12:40
 Operator : SY/MD
 Sample : VU0922WBL01
 Misc : 25.0mL/MSVOA U/WATER
 ALS Vial : 3 Sample Multiplier: 1

Instrument :
 MSVOA_V
 Client Sampled :
 VU0922WBL01

Quant Time: Sep 23 08:04:30 2020
 Quant Method : Z:\VOASRV\HPCHEM1\MSVOA U\METHOD\524U091120DW.M
 Quant Title : METHOD 524.2 VOLATILES DRINKING WATER
 QLast Update : Fri Sep 11 13:27:06 2020
 Response via : Initial Calibration

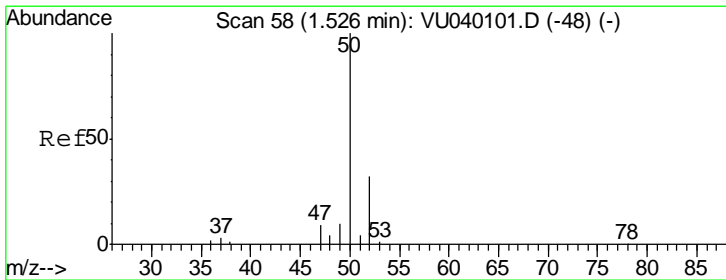
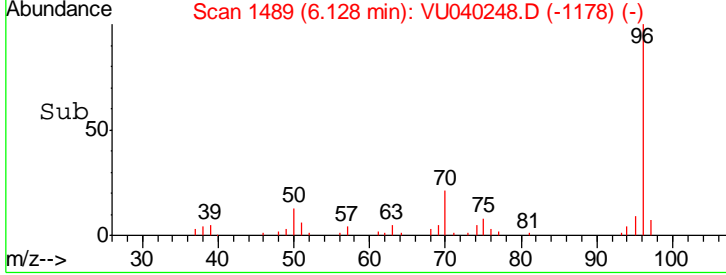
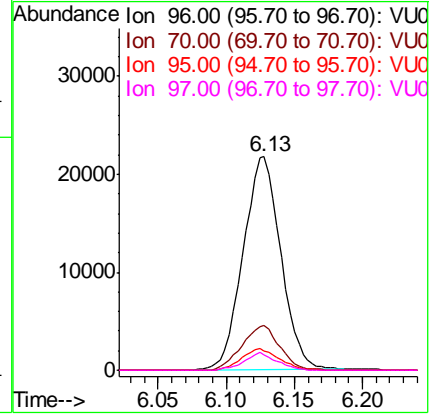
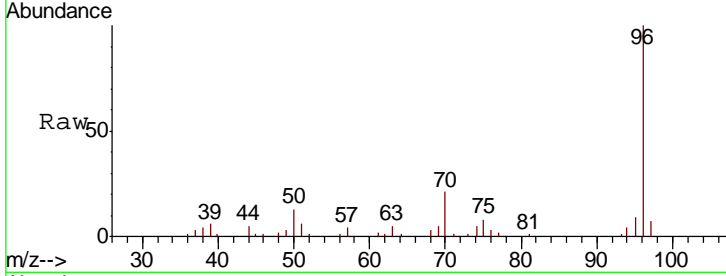




#1
 Fluorobenzene
 Concen: 1.000 ug/l
 RT: 6.13 min Scan# 1489
 Delta R.T. 0.00 min
 Lab File: VU040248.D
 Acq: 22 Sep 2020 12:40

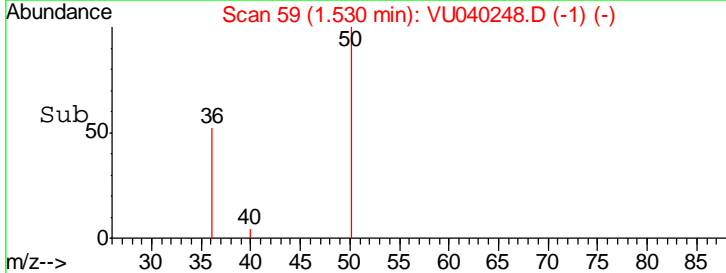
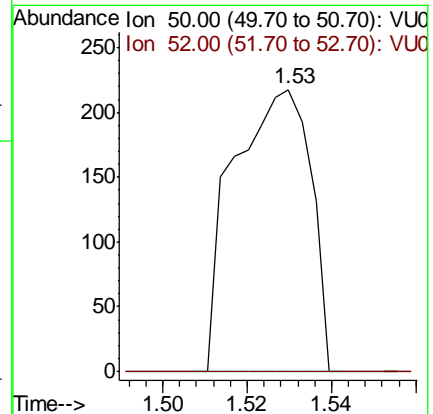
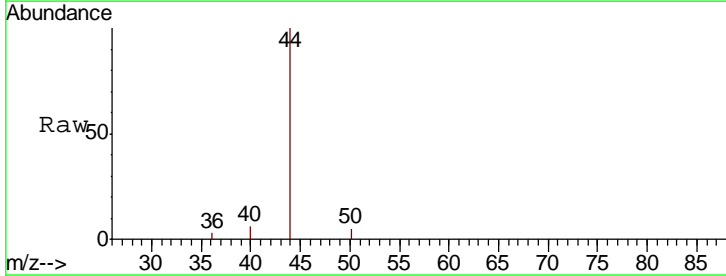
Instrument :
 MSVOA_V
 ClientSampled :
 VU0922WBL01

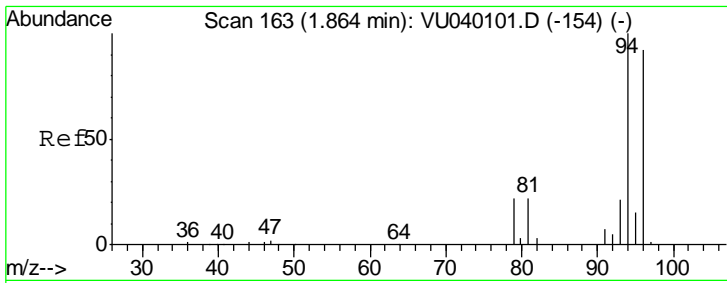
Tgt Ion	Resp	Lower	Upper
96	41536		
70	21.0	17.1	25.7
95	10.1	7.6	11.4
97	7.0	0.0	0.0#



#3
 Chloromethane
 Concen: 0.019 ug/l
 RT: 1.53 min Scan# 59
 Delta R.T. 0.00 min
 Lab File: VU040248.D
 Acq: 22 Sep 2020 12:40

Tgt Ion	Resp	Lower	Upper
50	276		
52	0.0	25.9	38.9#

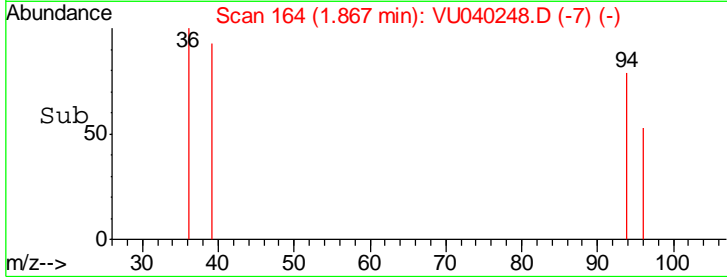
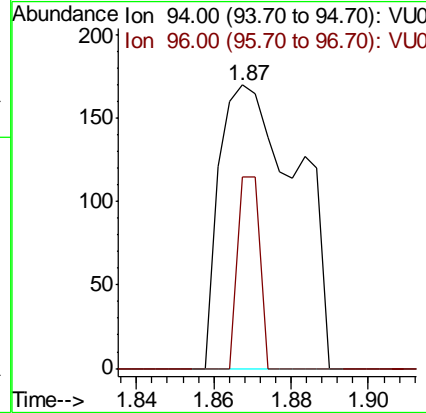
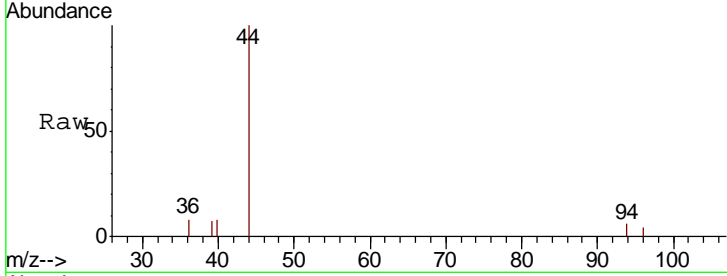




#5
 Bromomethane
 Concen: 0.046 ug/l
 RT: 1.87 min Scan# 164
 Delta R.T. 0.00 min
 Lab File: VU040248.D
 Acq: 22 Sep 2020 12:40

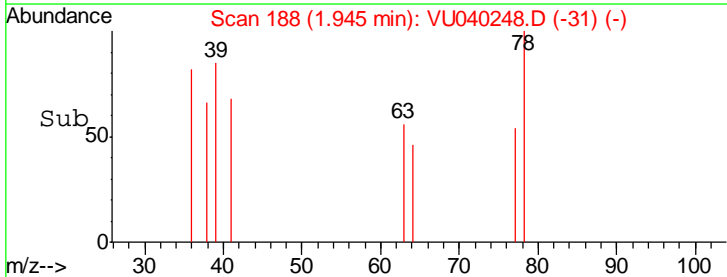
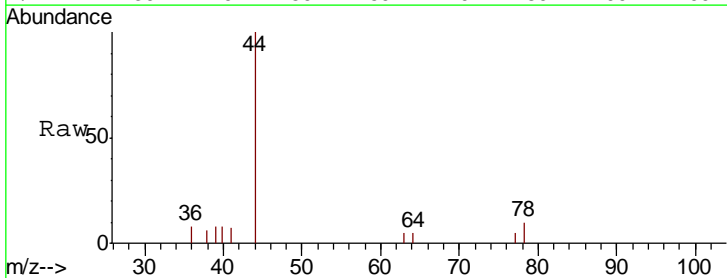
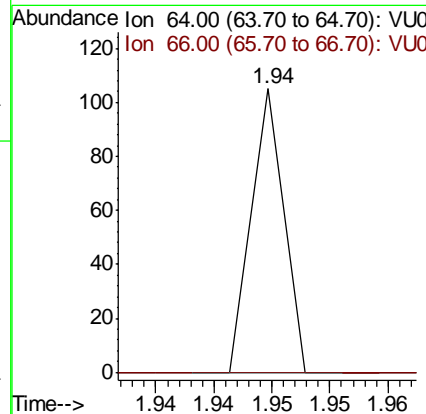
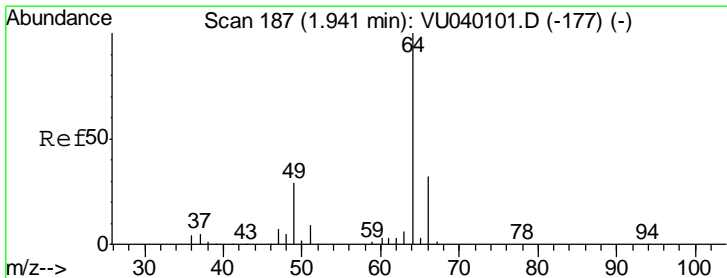
Instrument : MSVOA_V
 ClientSampled : VU0922WBL01

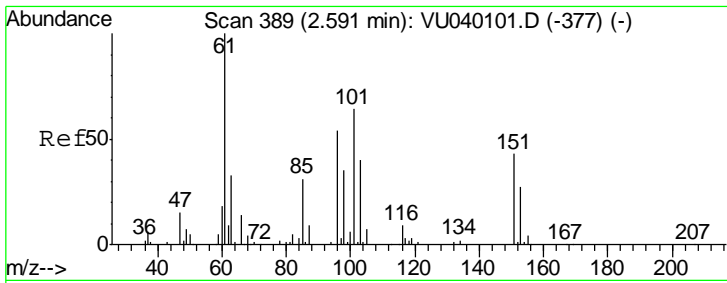
Tgt Ion: 94 Resp: 238
 Ion Ratio Lower Upper
 94 100
 96 67.6 75.4 113.2#



#6
 Chloroethane
 Concen: 0.002 ug/l
 RT: 1.94 min Scan# 188
 Delta R.T. 0.00 min
 Lab File: VU040248.D
 Acq: 22 Sep 2020 12:40

Tgt Ion: 64 Resp: 20
 Ion Ratio Lower Upper
 64 100
 66 0.0 26.7 40.1#

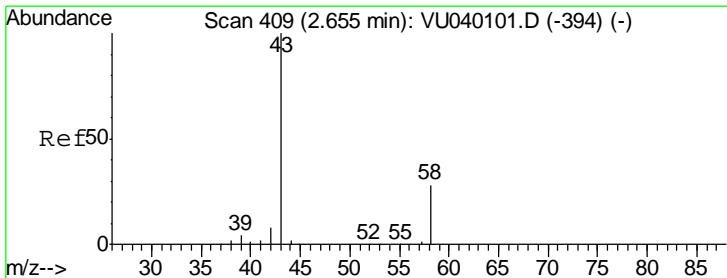
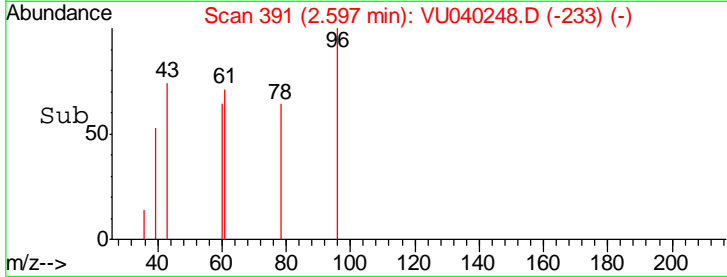
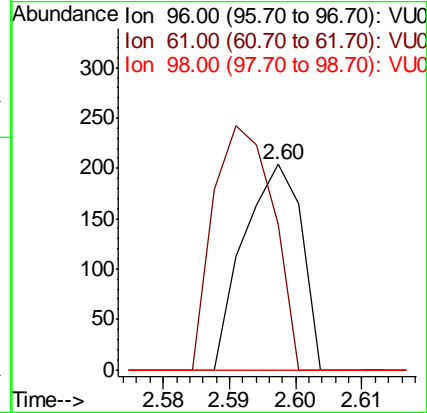
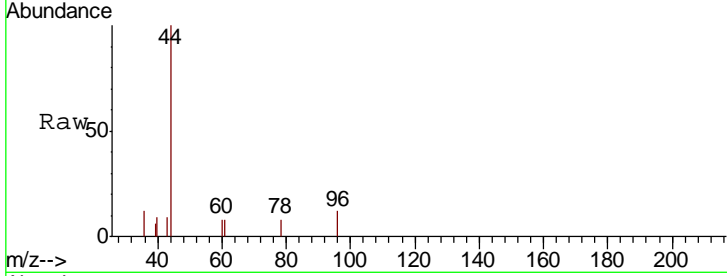




#9
 1,1-Dichloroethene
 Concen: 0.015 ug/l
 RT: 2.60 min Scan# 391
 Delta R.T. 0.01 min
 Lab File: VU040248.D
 Acq: 22 Sep 2020 12:40

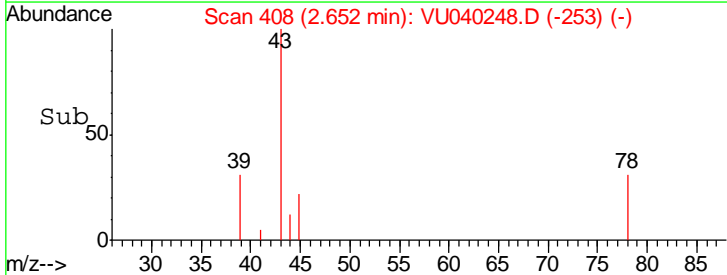
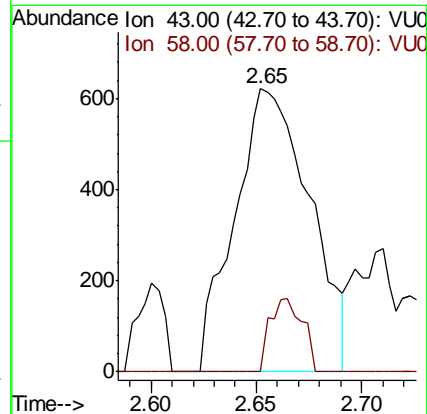
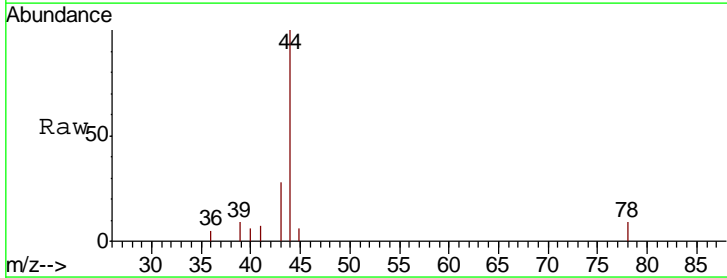
Instrument :
 MSVOA_V
 ClientSampleId :
 VU0922WBL01

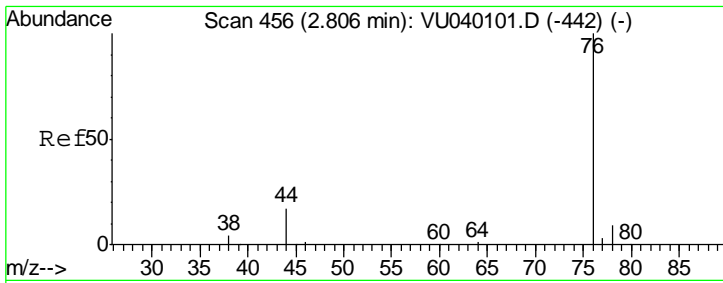
Tgt Ion	Resp	Lower	Upper
96	100		
61	71.1	0.0	557.1
98	0.0	0.0	125.6



#13
 Acetone
 Concen: 0.254 ug/l
 RT: 2.65 min Scan# 408
 Delta R.T. -0.00 min
 Lab File: VU040248.D
 Acq: 22 Sep 2020 12:40

Tgt Ion	Resp	Lower	Upper
43	100		
58	0.0	20.6	31.0#

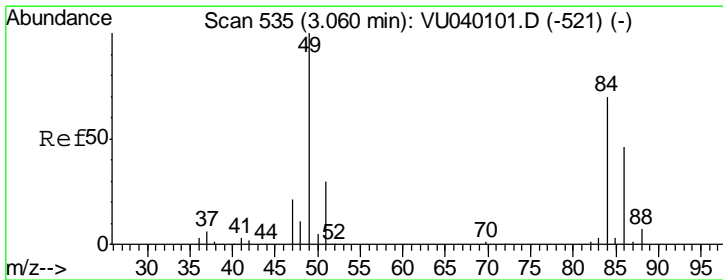
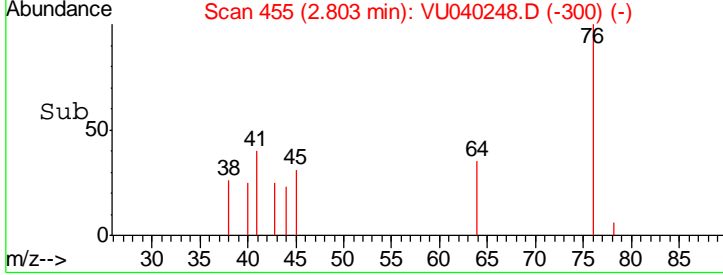
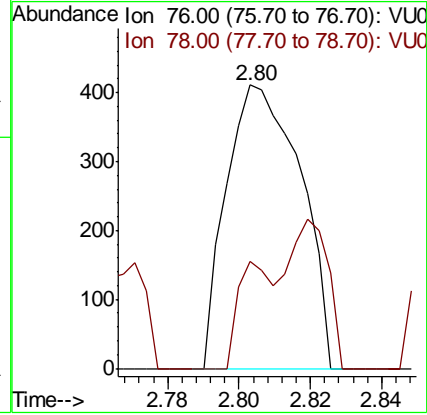
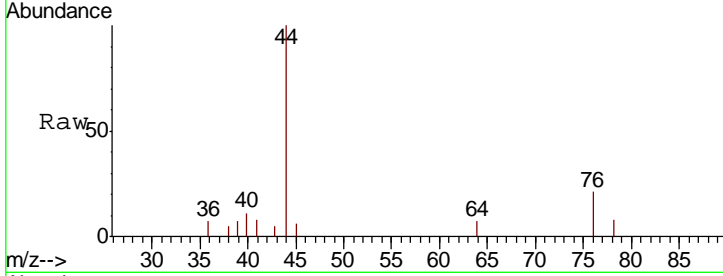




#14
 Carbon Disulfide
 Concen: 0.042 ug/l
 RT: 2.80 min Scan# 455
 Delta R.T. -0.00 min
 Lab File: VU040248.D
 Acq: 22 Sep 2020 12:40

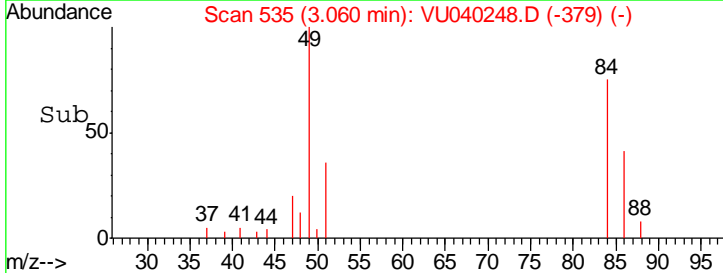
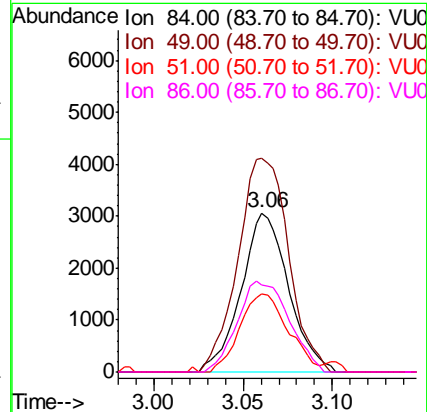
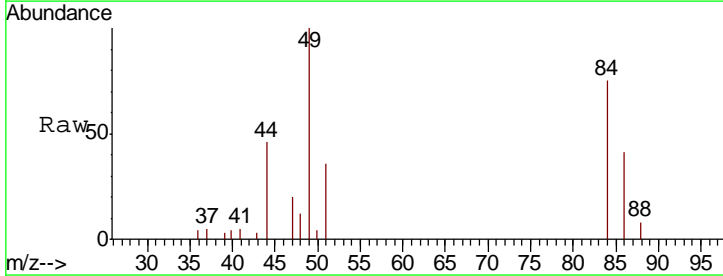
Instrument :
 MSVOA_V
 ClientSampleId :
 VU0922WBL01

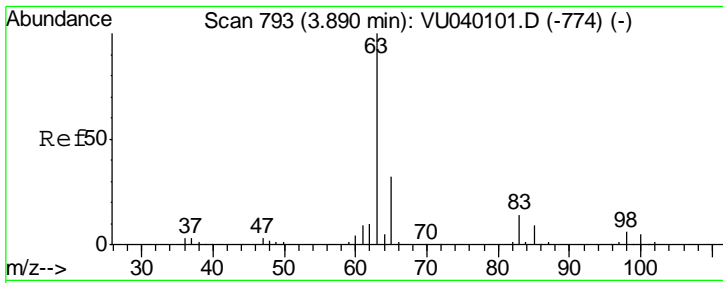
Tgt Ion	Resp	Lower	Upper
76	100		
78	38.0	7.2	10.8#



#15
 Methylene Chloride
 Concen: 0.422 ug/l
 RT: 3.06 min Scan# 535
 Delta R.T. 0.00 min
 Lab File: VU040248.D
 Acq: 22 Sep 2020 12:40

Tgt Ion	Resp	Lower	Upper
84	100		
49	134.0	114.3	171.5
51	45.4	0.0	84.6
86	55.0	50.6	76.0



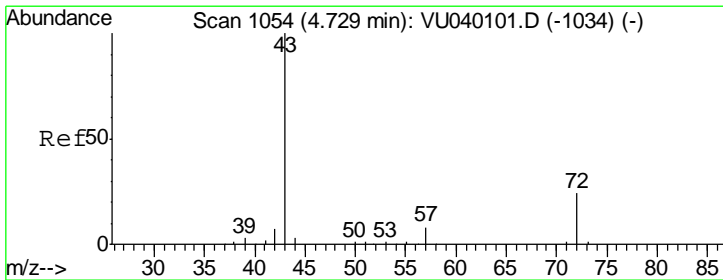
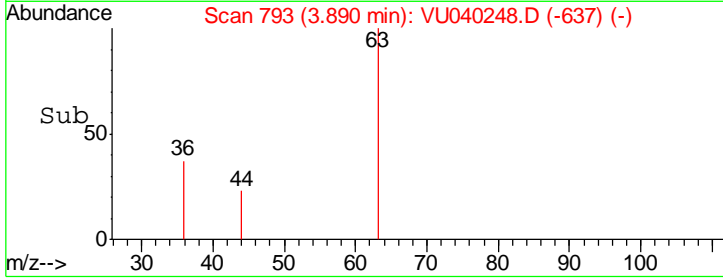
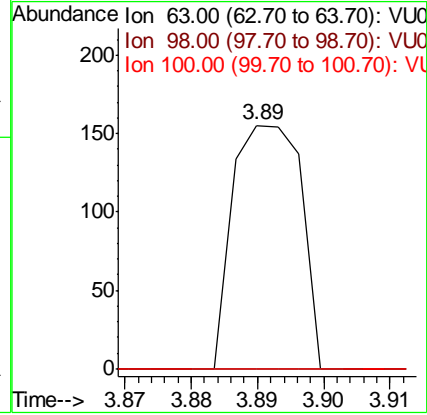
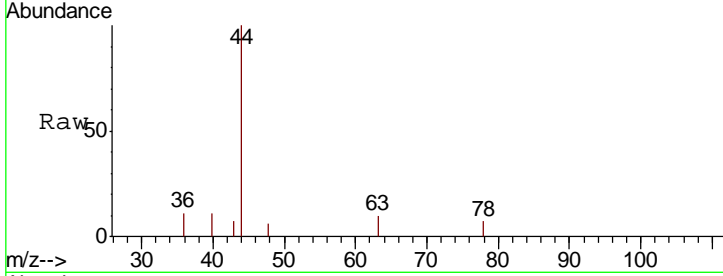


#17
 1,1-Dichloroethane
 Concen: 0.005 ug/l
 RT: 3.89 min Scan# 793
 Delta R.T. 0.00 min
 Lab File: VU040248.D
 Acq: 22 Sep 2020 12:40

Instrument :
 MSVOA_V
 ClientSampled :
 VU0922WBL01

Tgt Ion: 63 Resp: 112

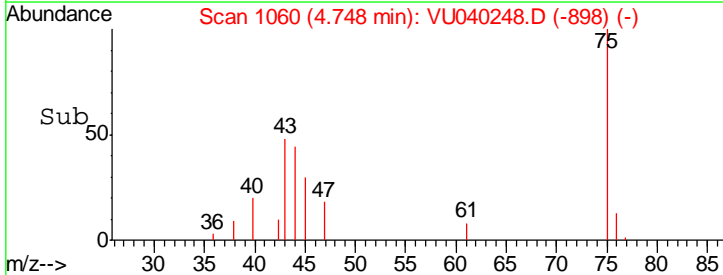
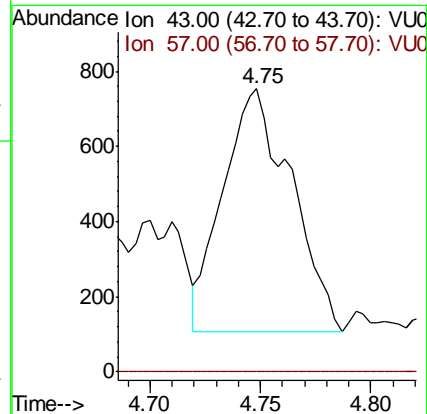
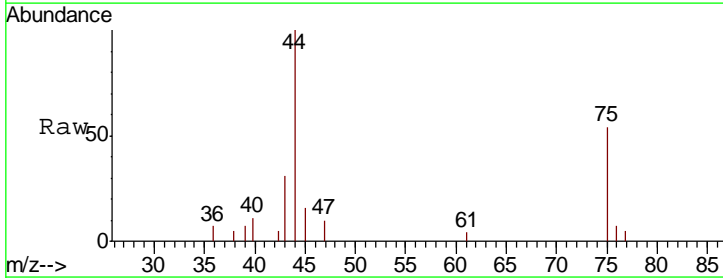
Ion	Ratio	Lower	Upper
63	100		
98	0.0	3.1	9.4#
100	0.0	2.0	5.8#

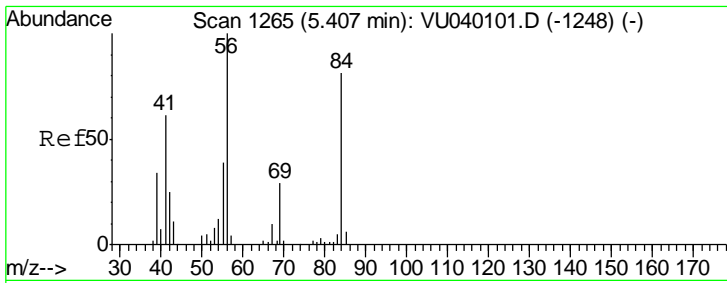


#18
 2-Butanone
 Concen: 0.151 ug/l
 RT: 4.75 min Scan# 1060
 Delta R.T. 0.02 min
 Lab File: VU040248.D
 Acq: 22 Sep 2020 12:40

Tgt Ion: 43 Resp: 1386

Ion	Ratio	Lower	Upper
43	100		
57	0.0	0.0	15.2

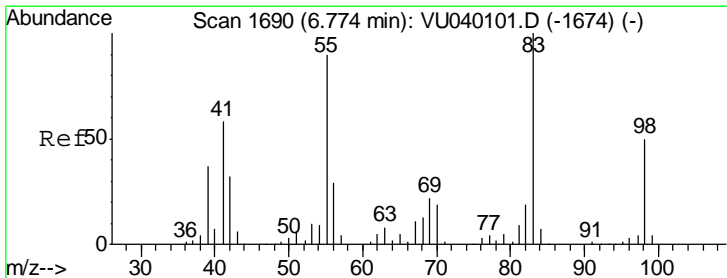
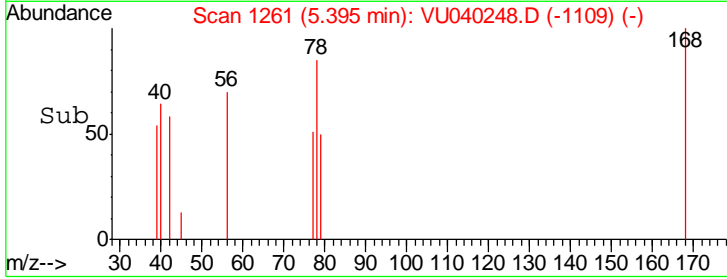
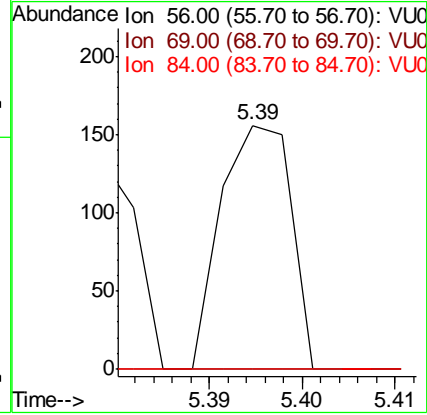
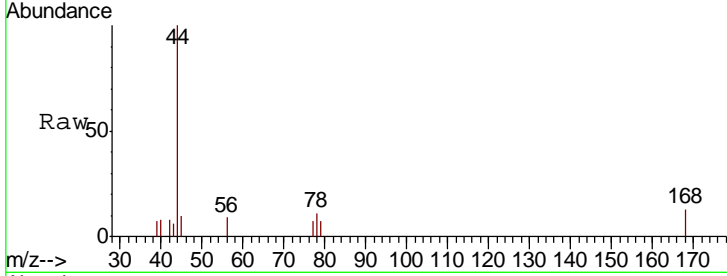




#19
 Cyclohexane
 Concen: 0.006 ug/l
 RT: 5.39 min Scan# 1261
 Delta R.T. -0.01 min
 Lab File: VU040248.D
 Acq: 22 Sep 2020 12:40

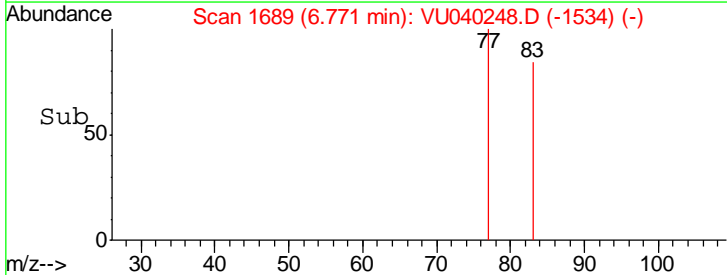
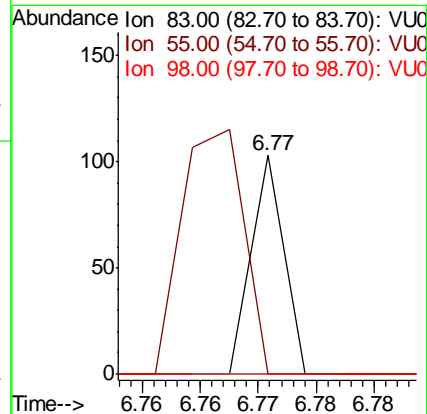
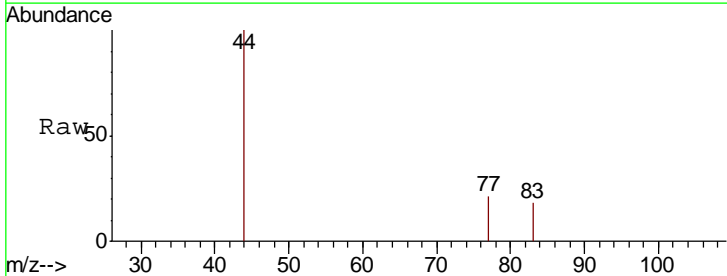
Instrument :
 MSVOA_V
 ClientSampled :
 VU0922WBL01

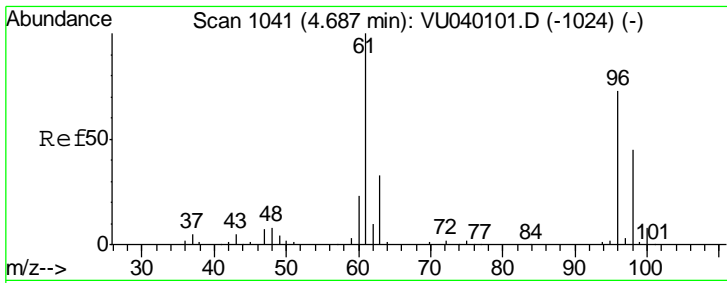
Tgt Ion	Resp	Lower	Upper
56	100		
69	0.0	23.5	35.3#
84	0.0	63.8	95.6#



#20
 Methylcyclohexane
 Concen: 0.002 ug/l
 RT: 6.77 min Scan# 1689
 Delta R.T. -0.00 min
 Lab File: VU040248.D
 Acq: 22 Sep 2020 12:40

Tgt Ion	Resp	Lower	Upper
83	100		
55	215.0	69.4	104.2#
98	0.0	37.5	56.3#

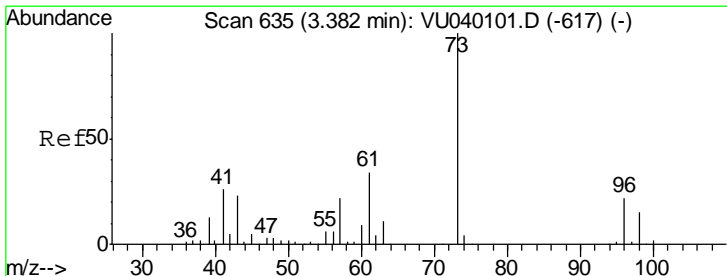
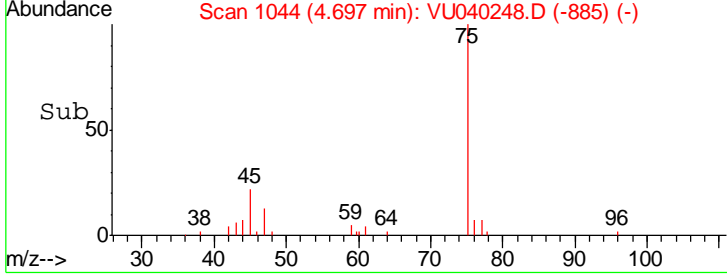
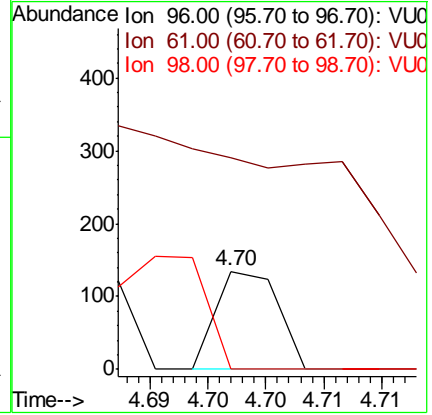
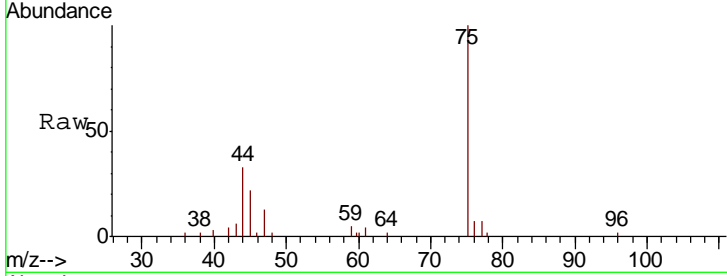




#22
 cis-1,2-Dichloroethene
 Concen: 0.005 ug/l
 RT: 4.70 min Scan# 1044
 Delta R.T. 0.01 min
 Lab File: VU040248.D
 Acq: 22 Sep 2020 12:40

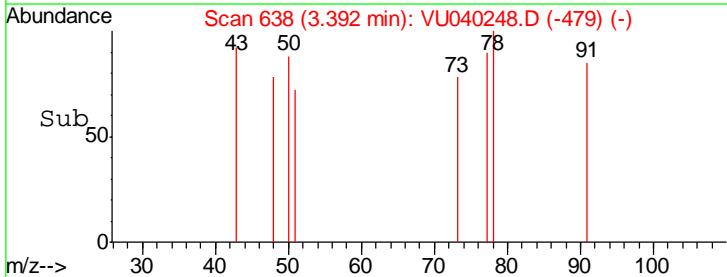
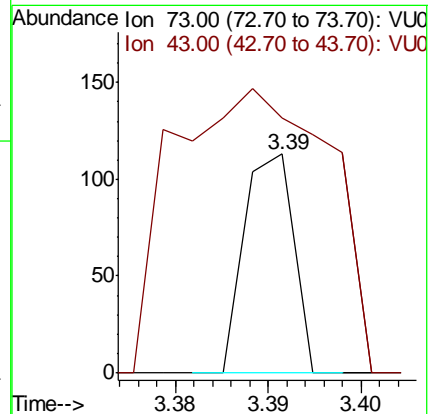
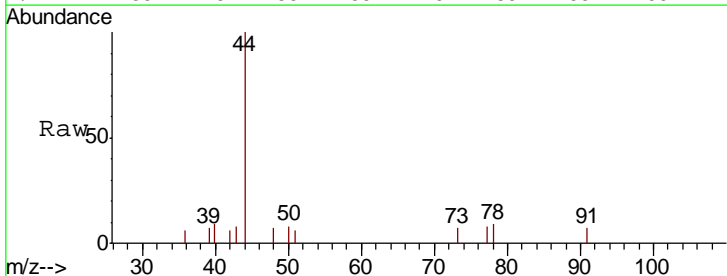
Instrument :
 MSVOA_V
 ClientSampled :
 VU0922WBL01

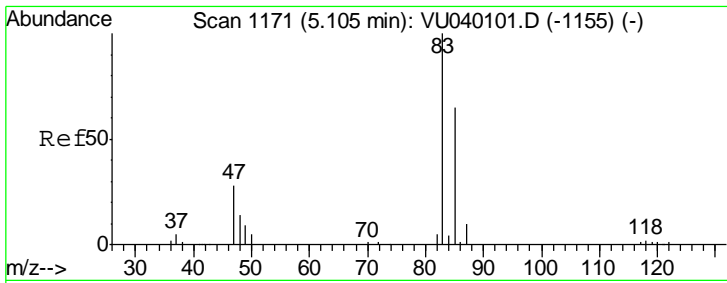
Tgt Ion	Resp	Lower	Upper
96	100		
61	1576.0	0.0	420.0#
98	162.0	31.8	95.3#



#25
 Methyl tert-Butyl Ether
 Concen: 0.001 ug/l
 RT: 3.39 min Scan# 638
 Delta R.T. 0.01 min
 Lab File: VU040248.D
 Acq: 22 Sep 2020 12:40

Tgt Ion	Resp	Lower	Upper
73	100		
43	409.5	20.0	30.0#

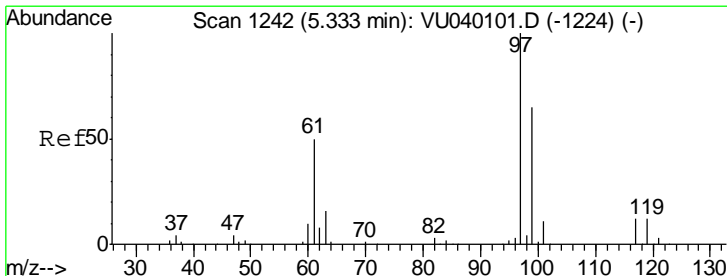
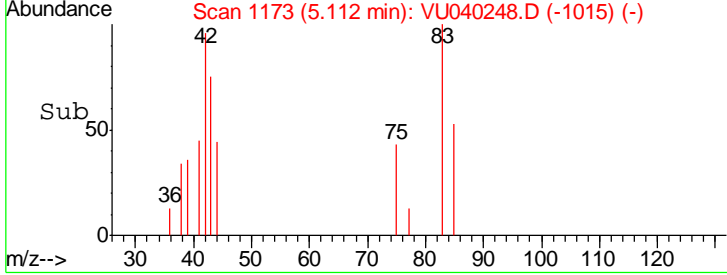
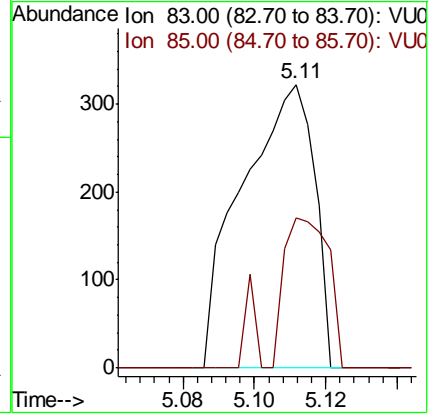
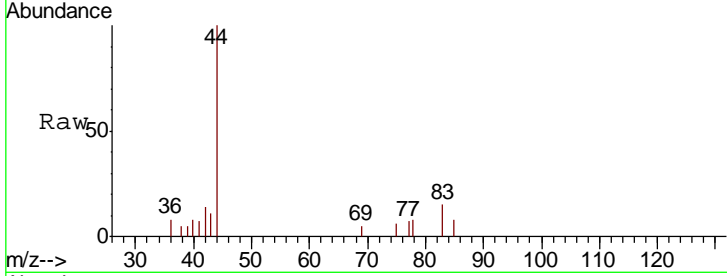




#27
 Chloroform
 Concen: 0.020 ug/l
 RT: 5.11 min Scan# 1173
 Delta R.T. 0.01 min
 Lab File: VU040248.D
 Acq: 22 Sep 2020 12:40

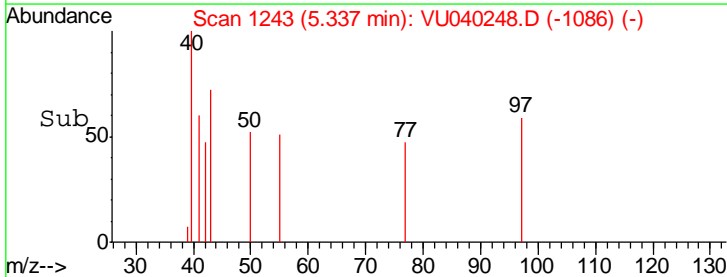
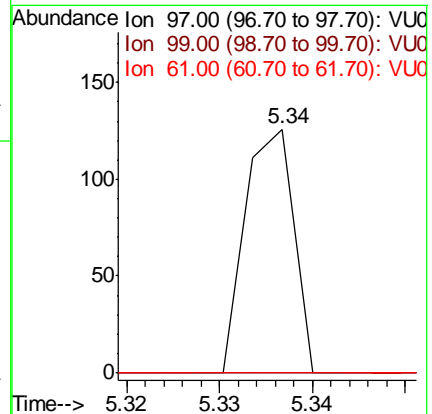
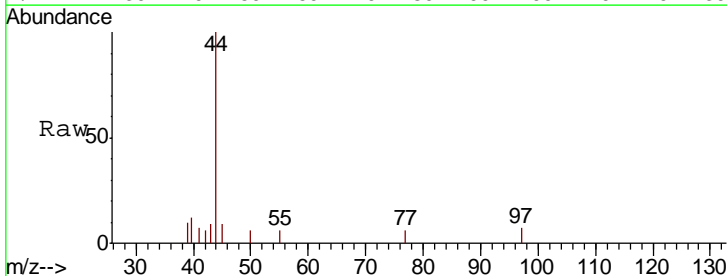
Instrument : MSVOA_V
 ClientSampled : VU0922WBL01

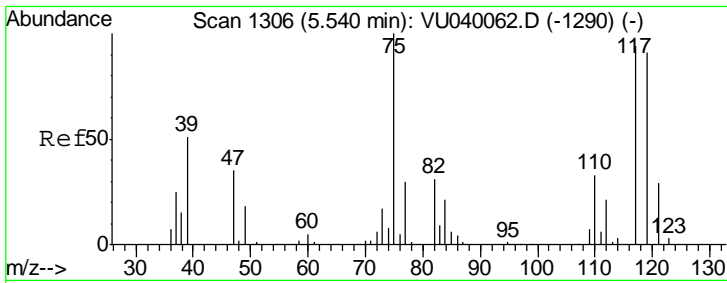
Tgt Ion	Resp	Lower	Upper
83	452		
85	53.1	0.0	132.4



#28
 1,1,1-Trichloroethane
 Concen: 0.002 ug/l
 RT: 5.34 min Scan# 1243
 Delta R.T. 0.00 min
 Lab File: VU040248.D
 Acq: 22 Sep 2020 12:40

Tgt Ion	Resp	Lower	Upper
97	46		
99	97.8	31.8	95.4#
61	0.0	25.1	75.2#

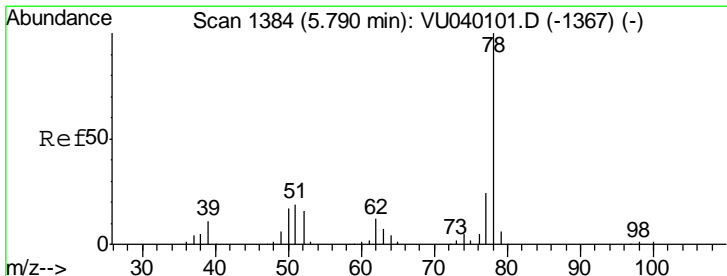
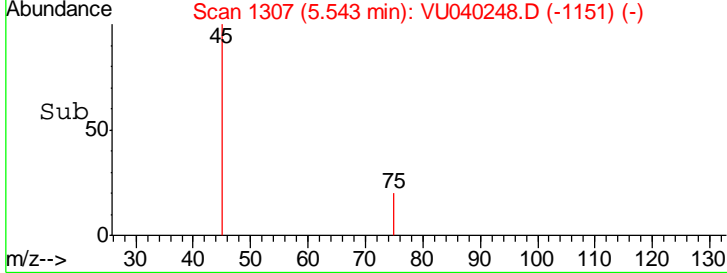
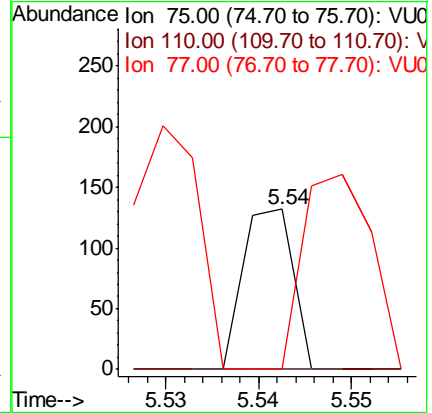
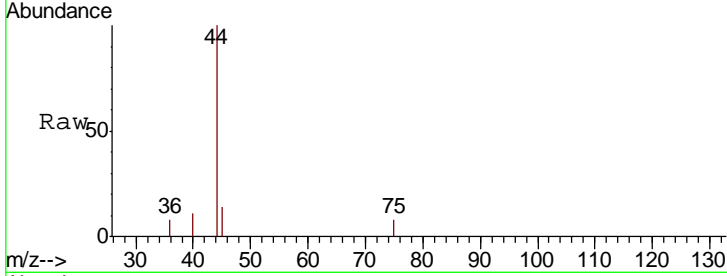




#29
 1,1-Dichloropropene
 Concen: 0.062 ug/l
 RT: 5.54 min Scan# 1307
 Delta R.T. 0.00 min
 Lab File: VU040248.D
 Acq: 22 Sep 2020 12:40

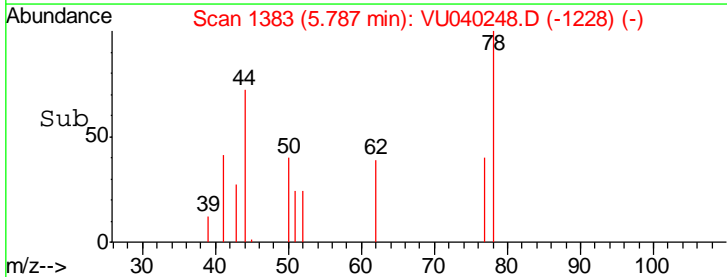
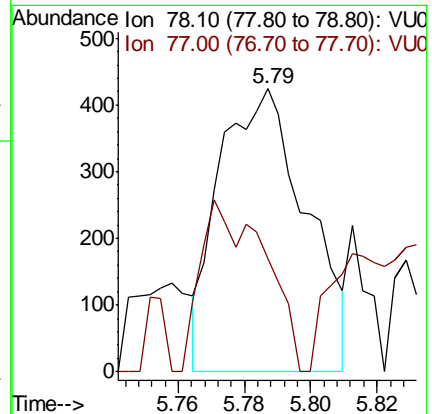
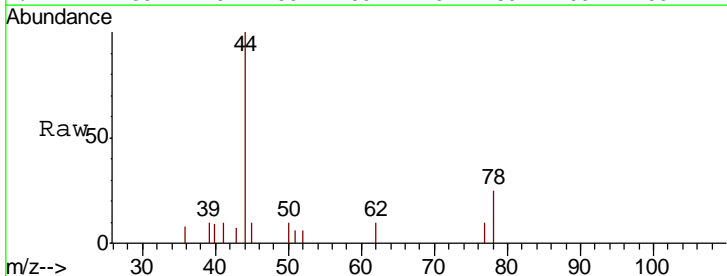
Instrument :
 MSVOA_V
 ClientSampled :
 VU0922WBL01

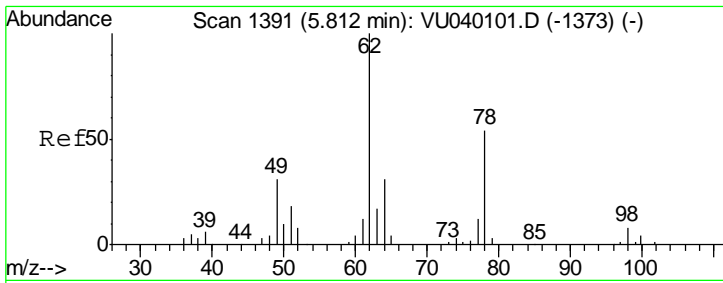
Tgt Ion	Resp	Lower	Upper
75	100		
110	0.0	16.2	48.6#
77	164.0	25.3	37.9#



#35
 Benzene
 Concen: 0.019 ug/l
 RT: 5.79 min Scan# 1383
 Delta R.T. -0.00 min
 Lab File: VU040248.D
 Acq: 22 Sep 2020 12:40

Tgt Ion	Resp	Lower	Upper
78	100		
77	20.6	19.1	28.7

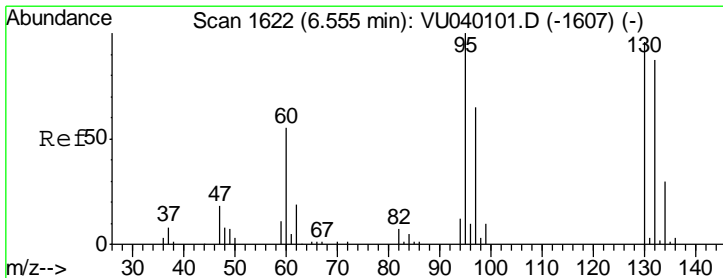
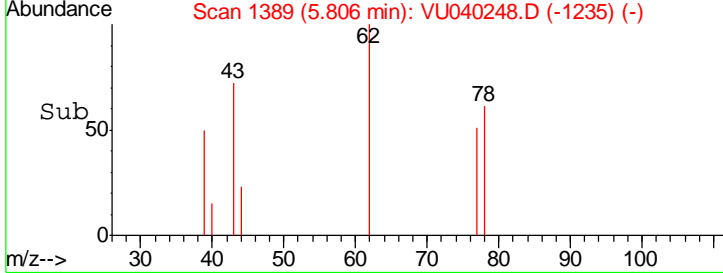
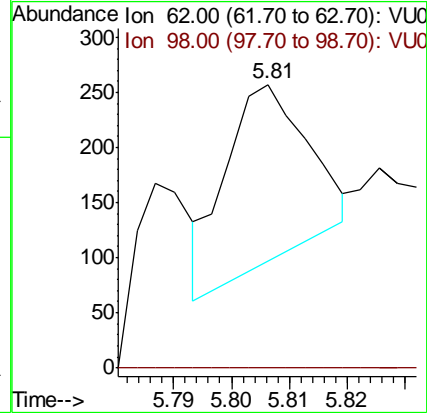
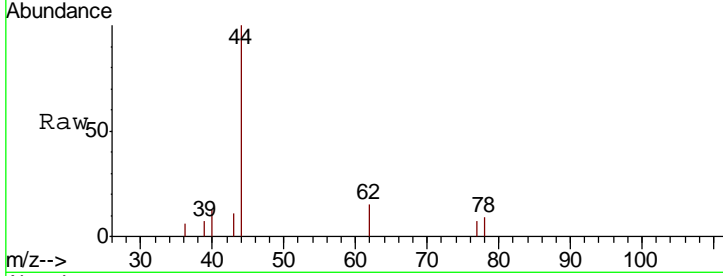




#36
 1,2-Dichloroethane
 Concen: 0.010 ug/l
 RT: 5.81 min Scan# 1389
 Delta R.T. -0.01 min
 Lab File: VU040248.D
 Acq: 22 Sep 2020 12:40

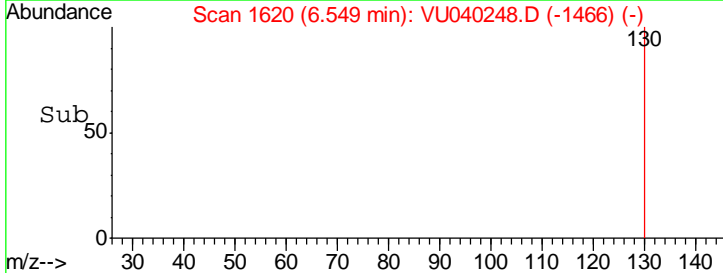
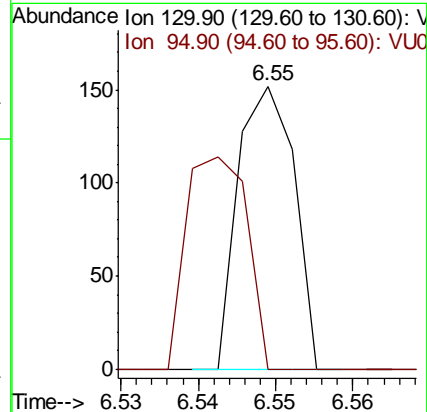
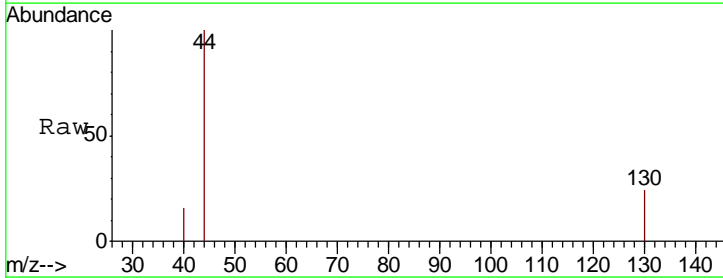
Instrument :
 MSVOA_V
 ClientSampled :
 VU0922WBL01

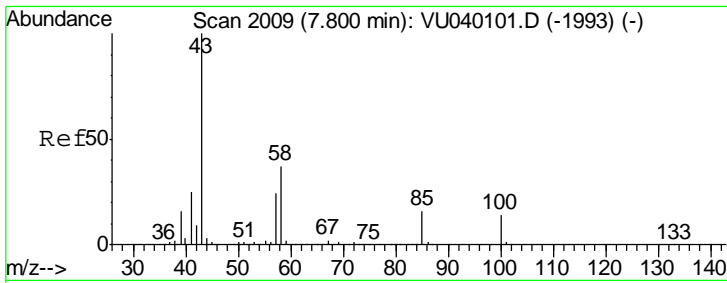
Tgt Ion	Resp	Lower	Upper
62	161		
98	0.0	6.5	9.7#



#37
 Trichloroethene
 Concen: 0.007 ug/l
 RT: 6.55 min Scan# 1620
 Delta R.T. -0.01 min
 Lab File: VU040248.D
 Acq: 22 Sep 2020 12:40

Tgt Ion	Resp	Lower	Upper
130	77		
95	0.0	84.2	126.2#

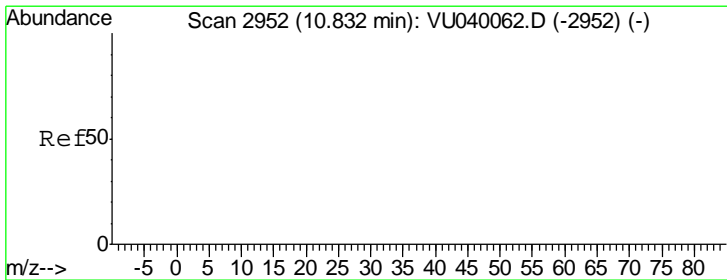
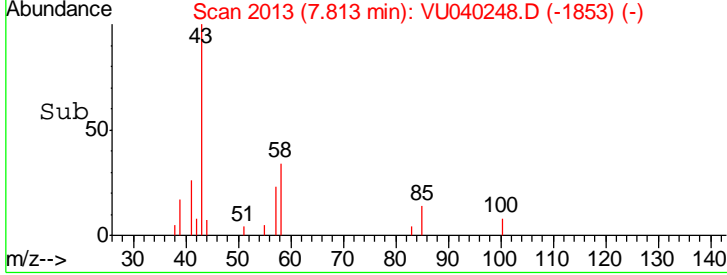
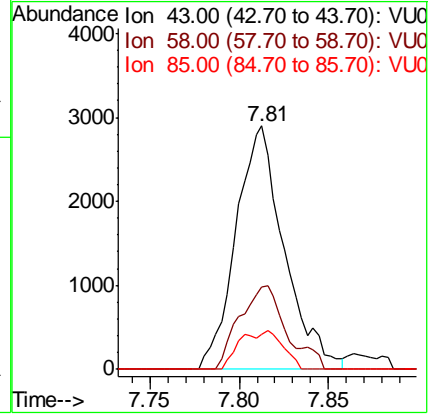
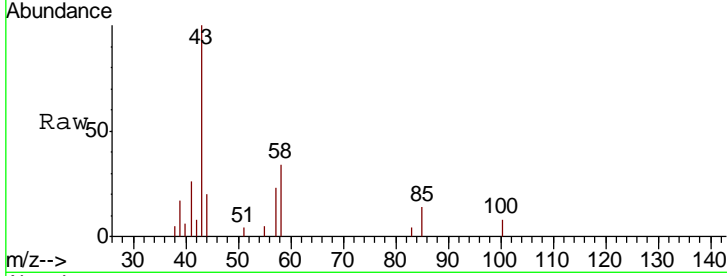




#45
 4-Methyl-2-Pentanone
 Concen: 0.261 ug/l
 RT: 7.81 min Scan# 2013
 Delta R.T. 0.01 min
 Lab File: VU040248.D
 Acq: 22 Sep 2020 12:40

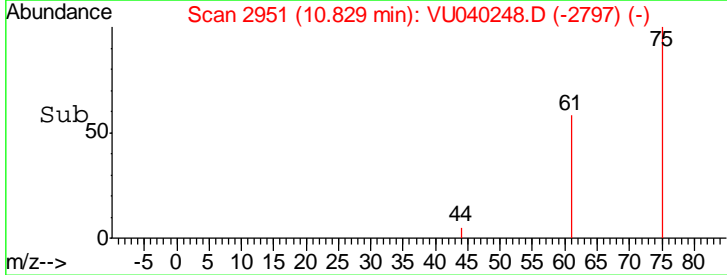
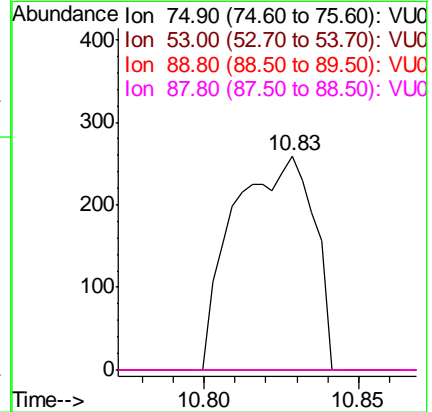
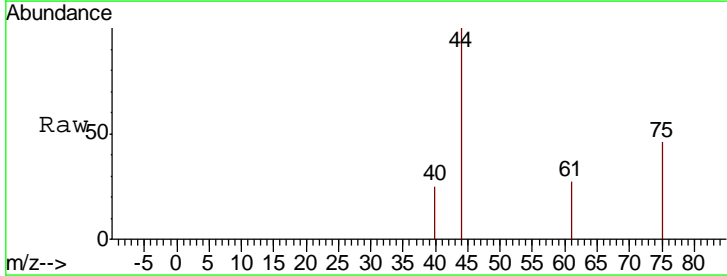
Instrument : MSVOA_V
 ClientSampleID : VU0922WBL01

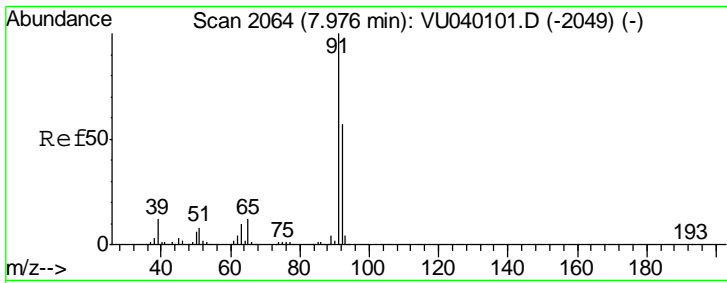
Tgt Ion	Resp	Lower	Upper
43	100		
58	33.1	18.1	54.3
85	14.2	12.3	18.5



#46
 t-1,4-Dichloro-2-butene
 Concen: 0.092 ug/l
 RT: 10.83 min Scan# 2951
 Delta R.T. -0.00 min
 Lab File: VU040248.D
 Acq: 22 Sep 2020 12:40

Tgt Ion	Resp	Lower	Upper
75	100		
53	0.0	75.0	112.6#
89	0.0	41.6	62.4#
88	0.0	36.6	54.8#

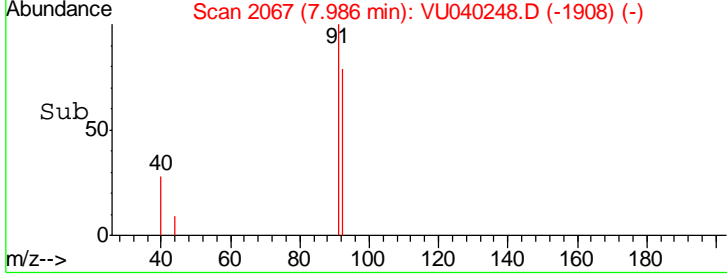
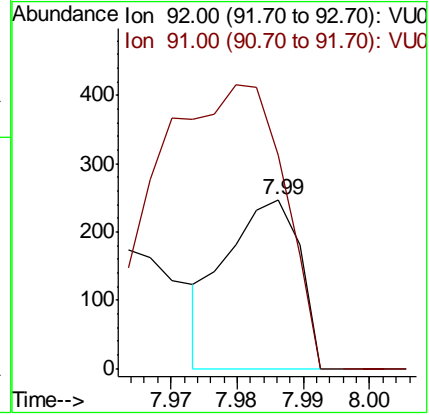
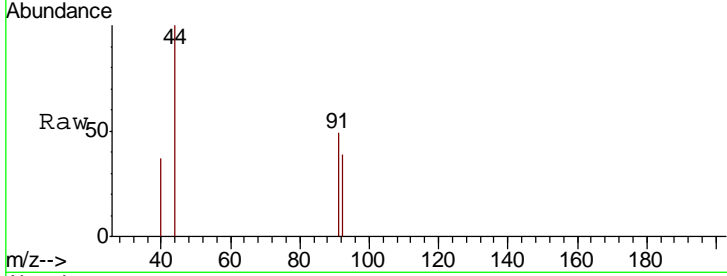




#49
 Toluene
 Concen: 0.007 ug/l
 RT: 7.99 min Scan# 2067
 Delta R.T. 0.01 min
 Lab File: VU040248.D
 Acq: 22 Sep 2020 12:40

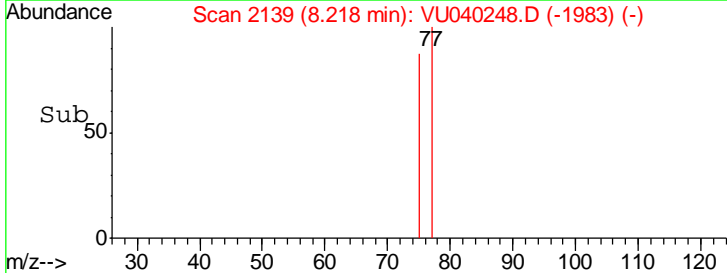
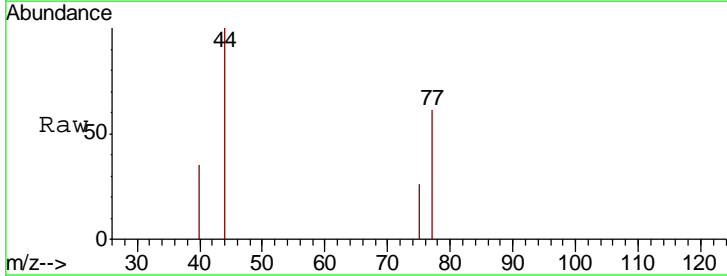
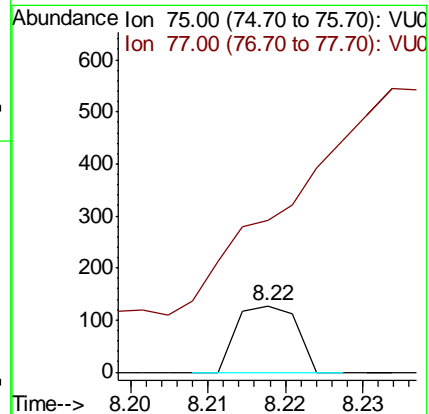
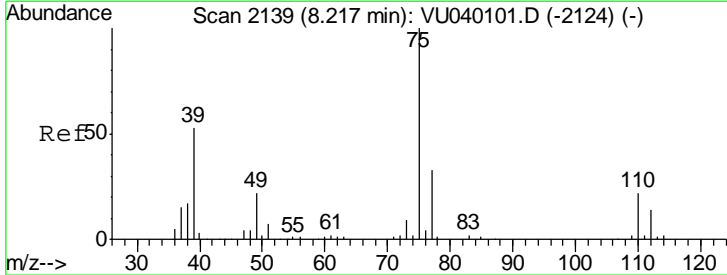
Instrument : MSVOA_V
 ClientSampled : VU0922WBL01

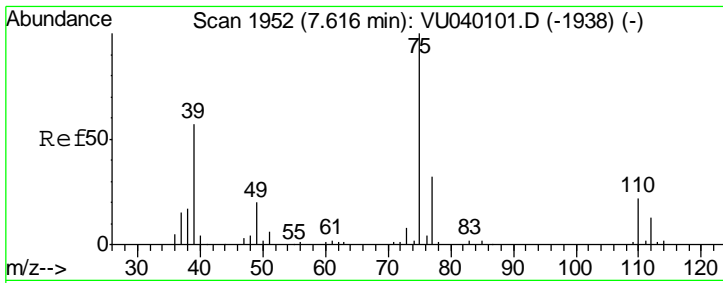
Tgt Ion	Resp	Lower	Upper
92	189		
92	100		
91	311.6	138.6	207.8#



#50
 t-1,3-Dichloropropene
 Concen: 0.004 ug/l
 RT: 8.22 min Scan# 2139
 Delta R.T. 0.00 min
 Lab File: VU040248.D
 Acq: 22 Sep 2020 12:40

Tgt Ion	Resp	Lower	Upper
75	69		
75	100		
77	122.8	24.4	36.6#

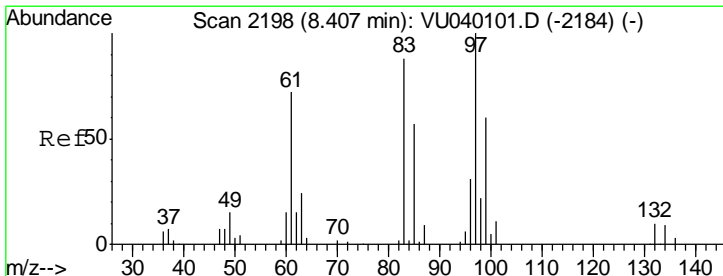
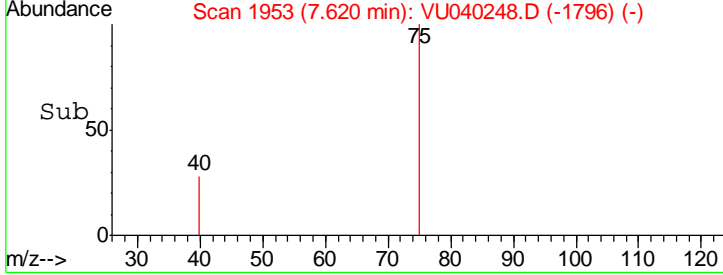
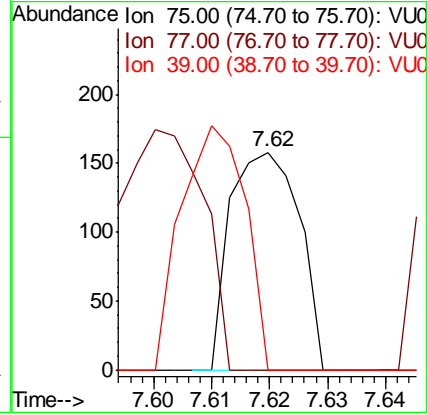
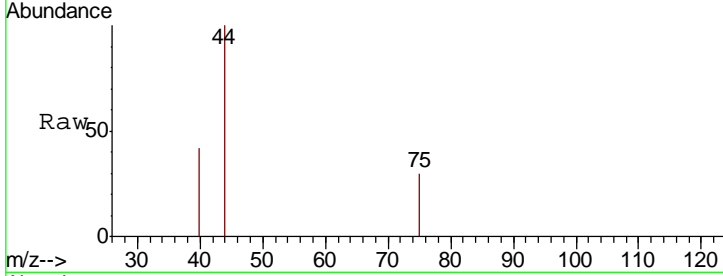




#51
 cis-1,3-Dichloropropene
 Concen: 0.008 ug/l
 RT: 7.62 min Scan# 1953
 Delta R.T. 0.00 min
 Lab File: VU040248.D
 Acq: 22 Sep 2020 12:40

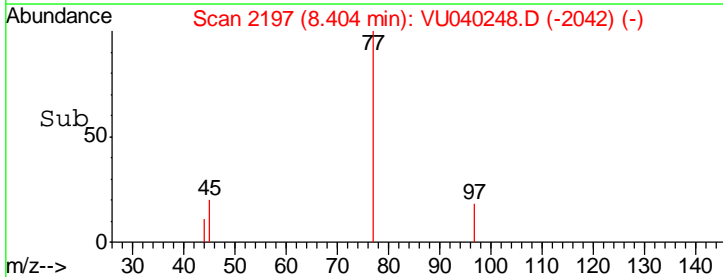
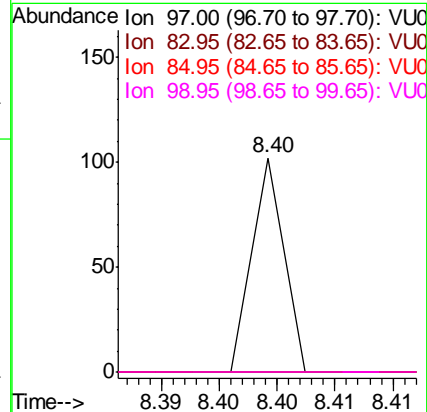
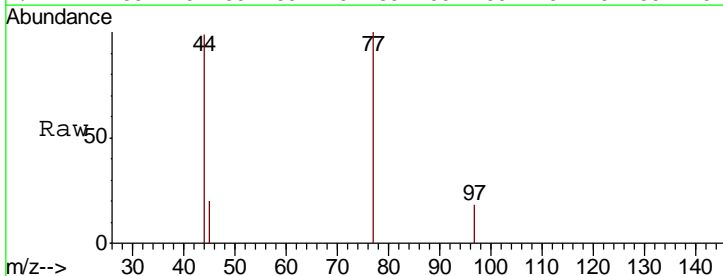
Instrument : MSVOA_V
 ClientSampleID : VU0922WBL01

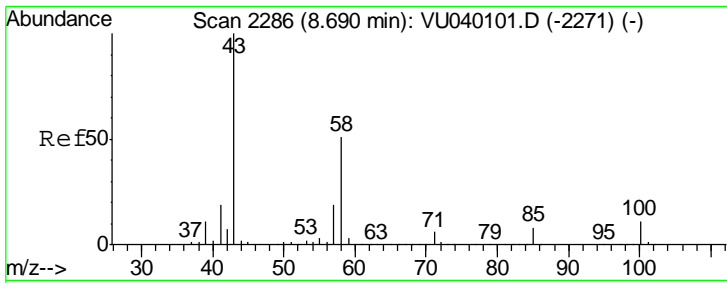
Tgt Ion	Resp	Lower	Upper
75	130		
77	0.0	24.6	37.0#
39	0.0	46.2	69.4#



#52
 1,1,2-Trichloroethane
 Concen: 0.002 ug/l
 RT: 8.40 min Scan# 2197
 Delta R.T. -0.00 min
 Lab File: VU040248.D
 Acq: 22 Sep 2020 12:40

Tgt Ion	Resp	Lower	Upper
97	20		
97	100		
83	0.0	68.7	103.1#
85	0.0	46.7	70.1#
99	0.0	48.6	72.8#

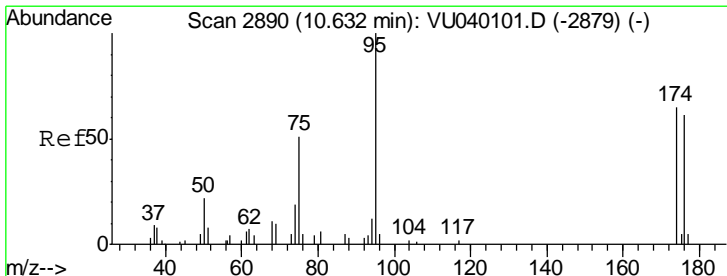
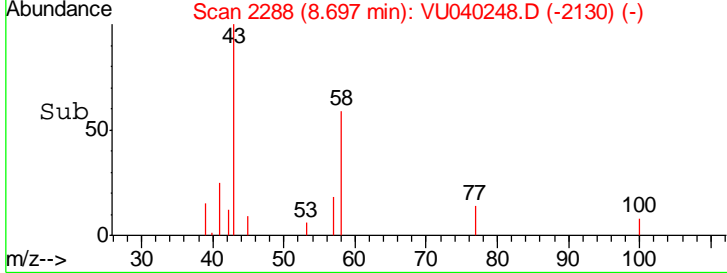
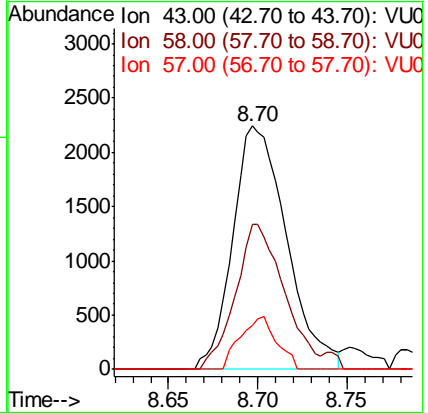
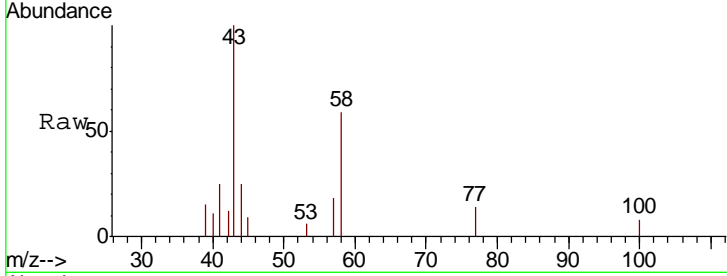




#54
 2-Hexanone
 Concen: 0.319 ug/l
 RT: 8.70 min Scan# 2288
 Delta R.T. 0.01 min
 Lab File: VU040248.D
 Acq: 22 Sep 2020 12:40

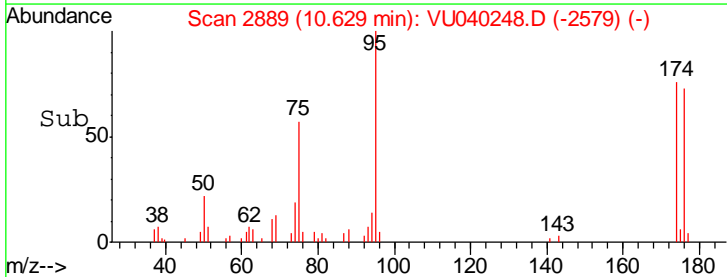
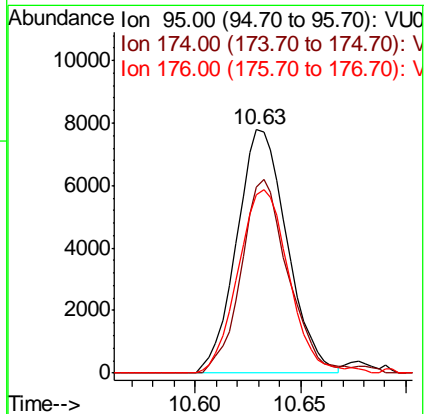
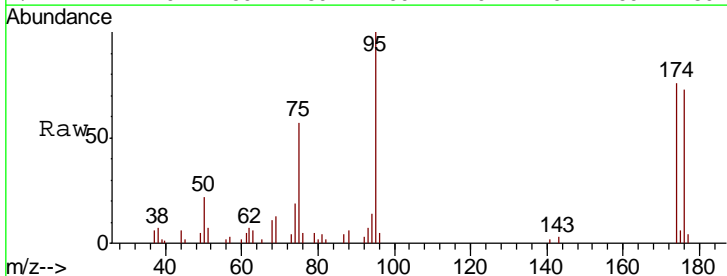
Instrument :
 MSVOA_V
 ClientSampleId :
 VU0922WBL01

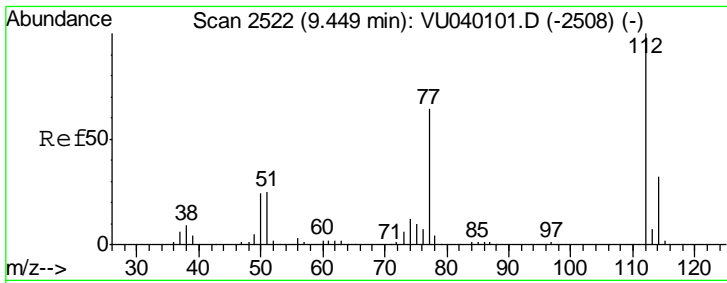
Tgt Ion	Resp	Lower	Upper
43	4718		
58	53.9	29.6	69.6
57	14.6	0.0	37.8



#57
 4-Bromofluorobenzene
 Concen: 0.750 ug/l
 RT: 10.63 min Scan# 2889
 Delta R.T. -0.00 min
 Lab File: VU040248.D
 Acq: 22 Sep 2020 12:40

Tgt Ion	Resp	Lower	Upper
95	12937		
174	74.3	49.4	74.0#
176	76.2	50.1	75.1#

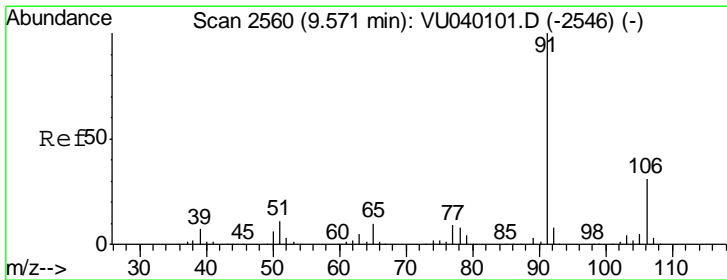
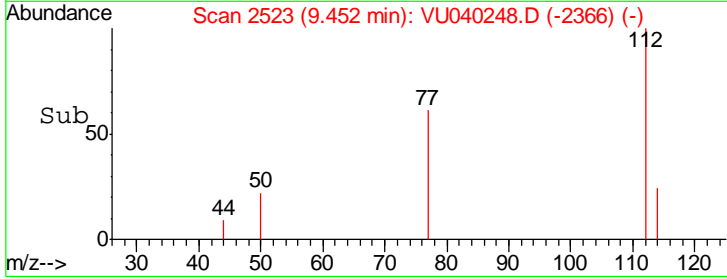
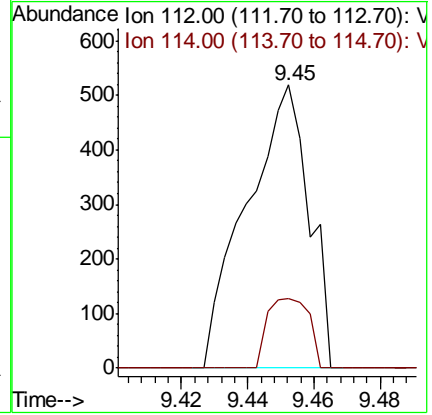
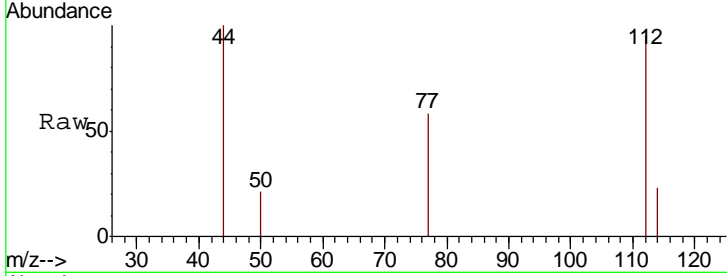




#59
 Chlorobenzene
 Concen: 0.022 ug/l
 RT: 9.45 min Scan# 2523
 Delta R.T. 0.00 min
 Lab File: VU040248.D
 Acq: 22 Sep 2020 12:40

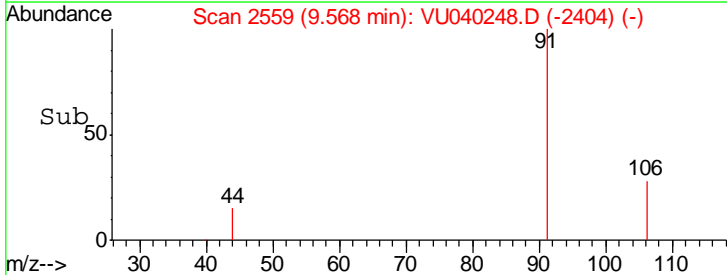
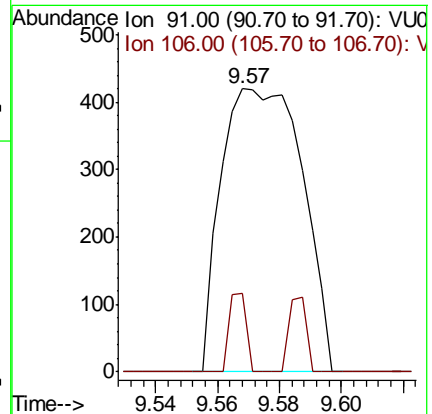
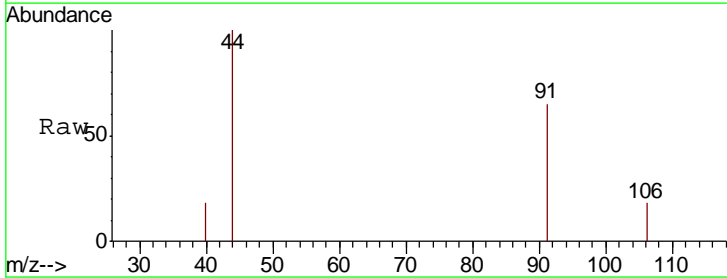
Instrument :
 MSVOA_V
 ClientSampleId :
 VU0922WBL01

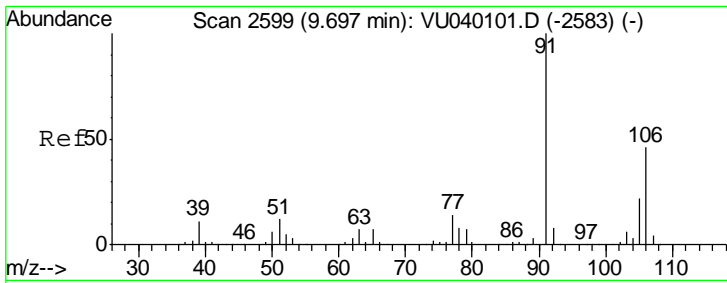
Tgt Ion: 112 Resp: 679
 Ion Ratio Lower Upper
 112 100
 114 24.5 24.8 37.2#



#63
 Ethyl Benzene
 Concen: 0.015 ug/l
 RT: 9.57 min Scan# 2559
 Delta R.T. -0.00 min
 Lab File: VU040248.D
 Acq: 22 Sep 2020 12:40

Tgt Ion: 91 Resp: 766
 Ion Ratio Lower Upper
 91 100
 106 27.9 23.8 35.8

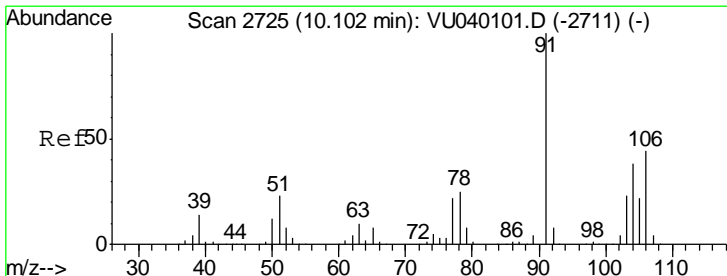
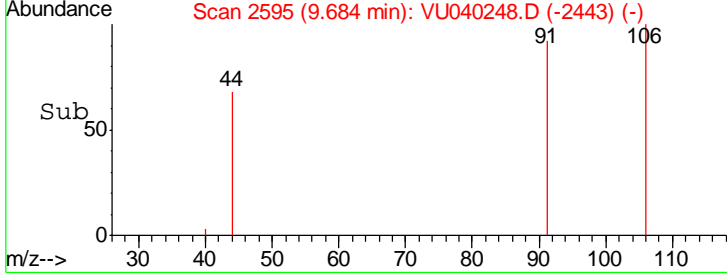
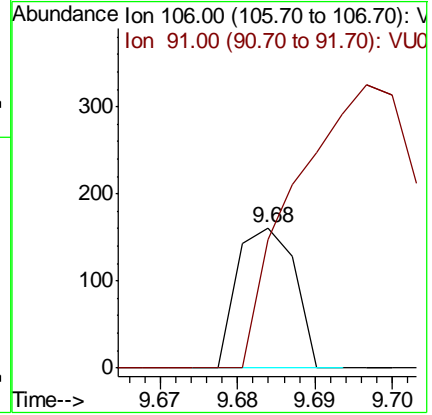
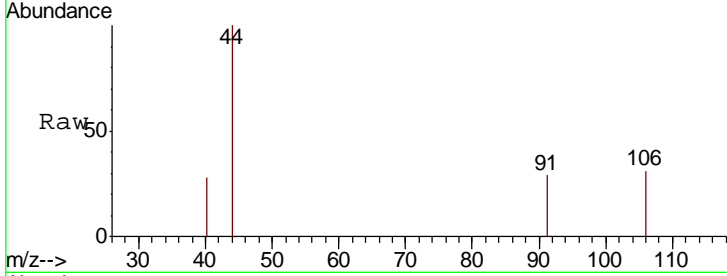




#64
 m/p-Xylenes
 Concen: 0.009 ug/l
 RT: 9.68 min Scan# 2595
 Delta R.T. -0.01 min
 Lab File: VU040248.D
 Acq: 22 Sep 2020 12:40

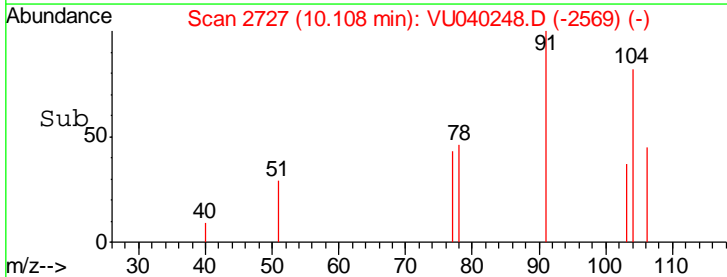
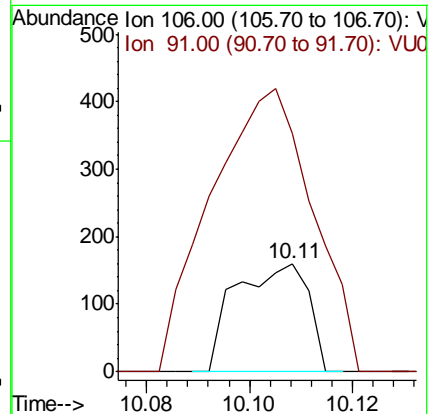
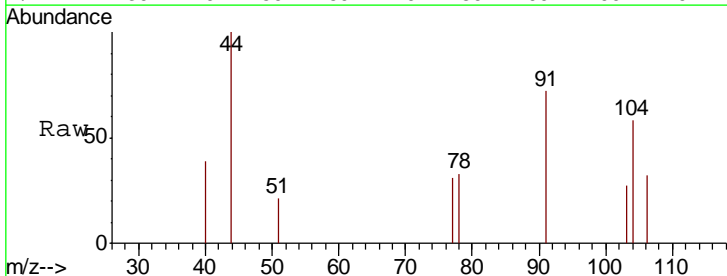
Instrument : MSVOA_V
 ClientSampled : VU0922WBL01

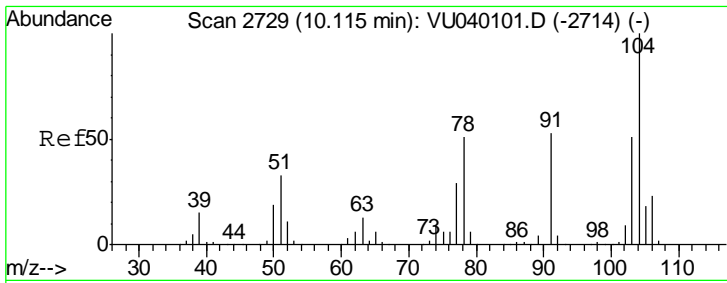
Tgt Ion:106 Resp: 83
 Ion Ratio Lower Upper
 106 100
 91 442.2 171.4 257.2#



#65
 o-Xylene
 Concen: 0.008 ug/l
 RT: 10.11 min Scan# 2727
 Delta R.T. 0.01 min
 Lab File: VU040248.D
 Acq: 22 Sep 2020 12:40

Tgt Ion:106 Resp: 155
 Ion Ratio Lower Upper
 106 100
 91 371.0 114.2 342.6#

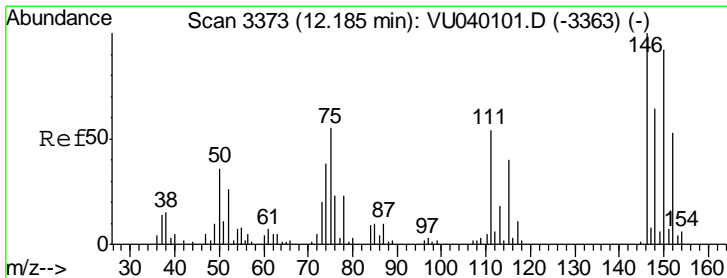
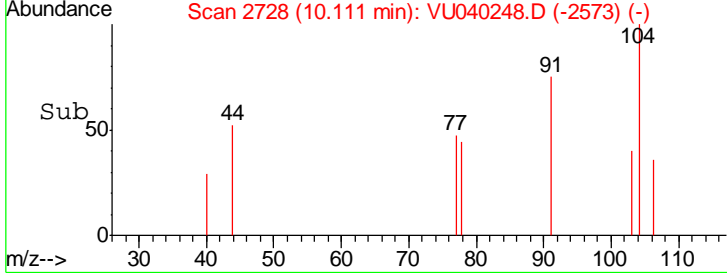
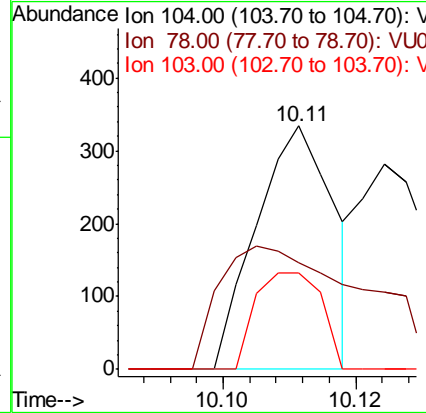
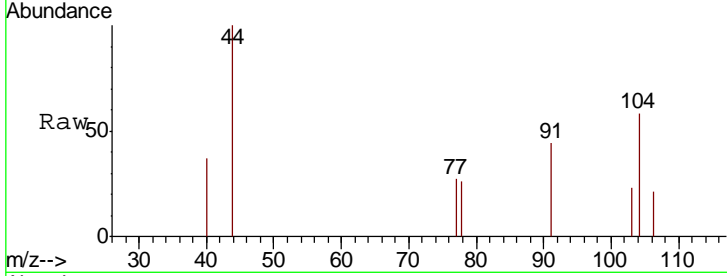




#66
 Styrene
 Concen: 0.008 ug/l
 RT: 10.11 min Scan# 2728
 Delta R.T. -0.00 min
 Lab File: VU040248.D
 Acq: 22 Sep 2020 12:40

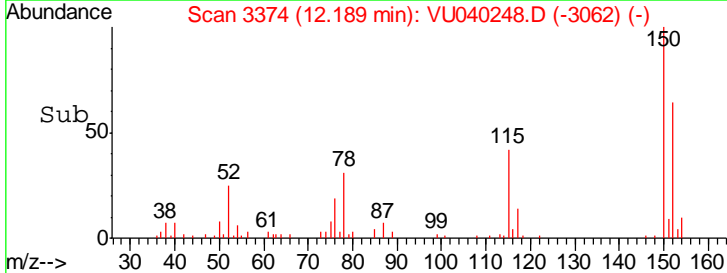
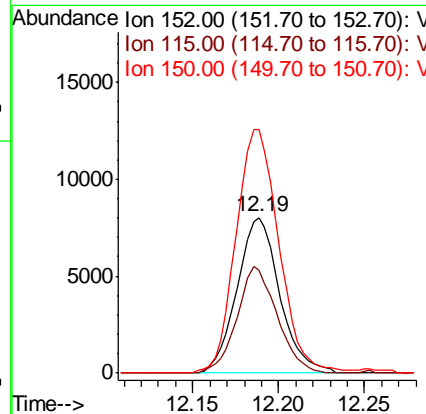
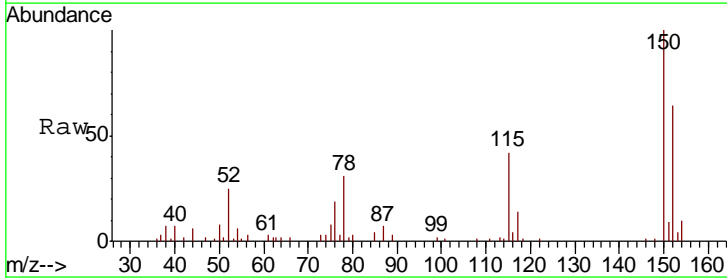
Instrument :
 MSVOA_V
 ClientSampled :
 VU0922WBL01

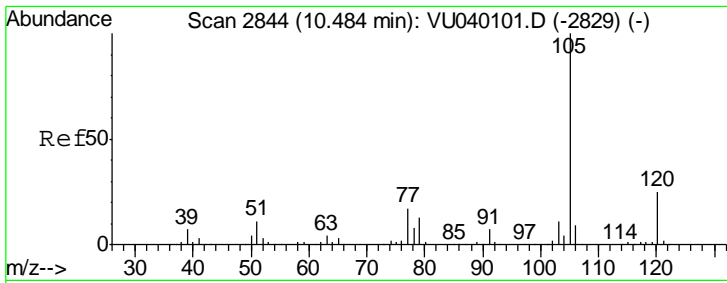
Tgt Ion	Resp	Lower	Upper
104	100		
78	93.0	43.9	65.9#
103	33.9	43.7	65.5#



#68
 1,2-Dichlorobenzene-d4
 Concen: 0.892 ug/l
 RT: 12.19 min Scan# 3374
 Delta R.T. 0.00 min
 Lab File: VU040248.D
 Acq: 22 Sep 2020 12:40

Tgt Ion	Resp	Lower	Upper
152	100		
115	64.5	0.0	309.0
150	156.9	0.0	658.2

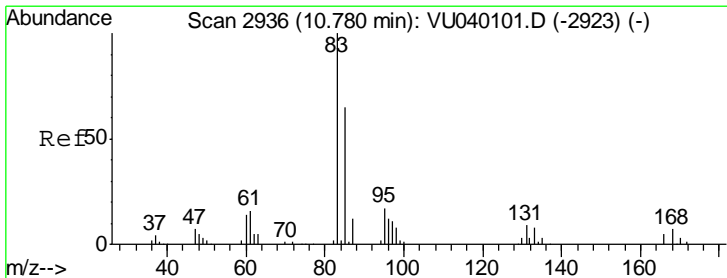
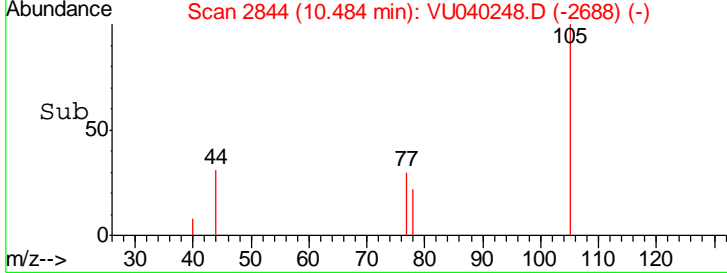
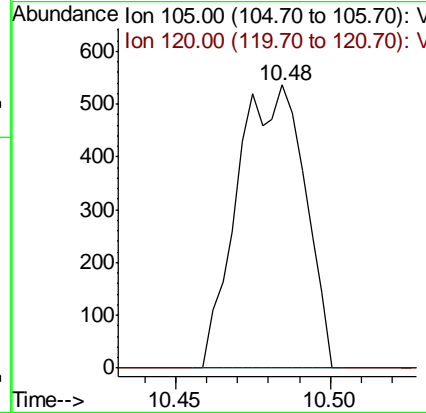
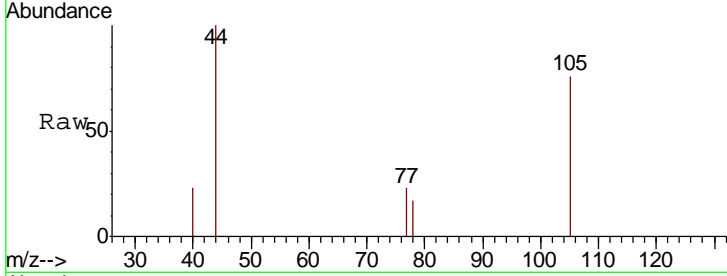




#69
 Isopropylbenzene
 Concen: 0.016 ug/l
 RT: 10.48 min Scan# 2844
 Delta R.T. 0.00 min
 Lab File: VU040248.D
 Acq: 22 Sep 2020 12:40

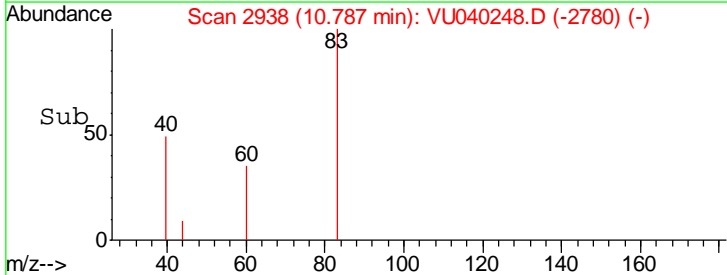
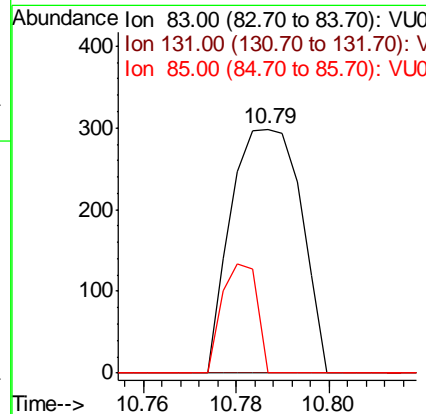
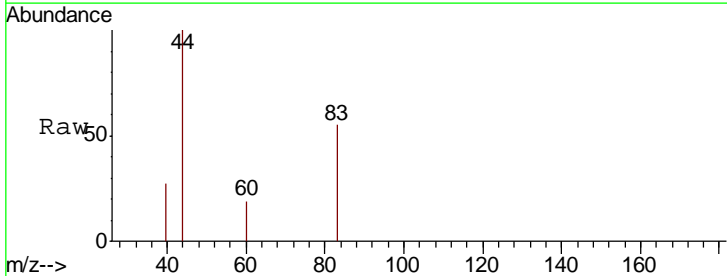
Instrument :
 MSVOA_V
 ClientSampled :
 VU0922WBL01

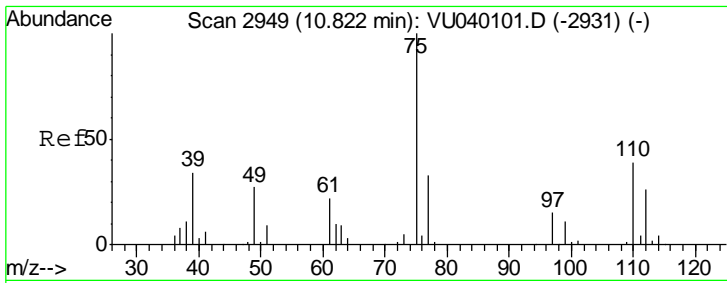
Tgt Ion: 105 Resp: 809
 Ion Ratio Lower Upper
 105 100
 120 0.0 12.4 37.4#



#70
 1,1,2,2-Tetrachloroethane
 Concen: 0.024 ug/l
 RT: 10.79 min Scan# 2938
 Delta R.T. 0.01 min
 Lab File: VU040248.D
 Acq: 22 Sep 2020 12:40

Tgt Ion: 83 Resp: 314
 Ion Ratio Lower Upper
 83 100
 131 0.0 7.5 11.3#
 85 22.3 49.7 74.5#

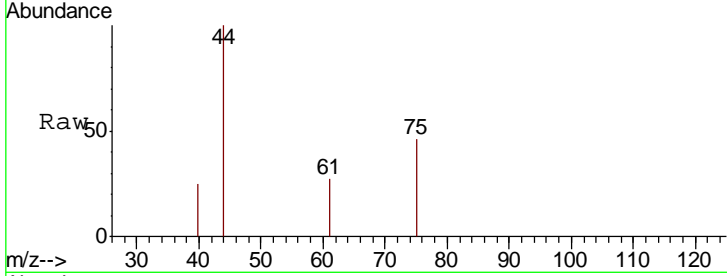




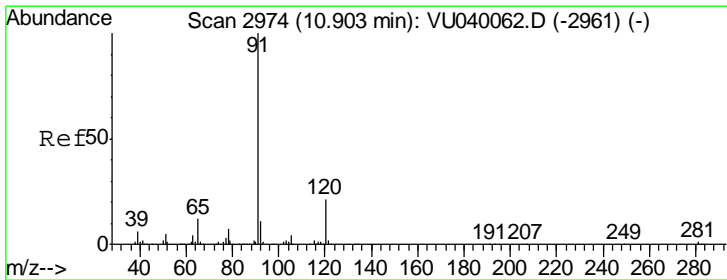
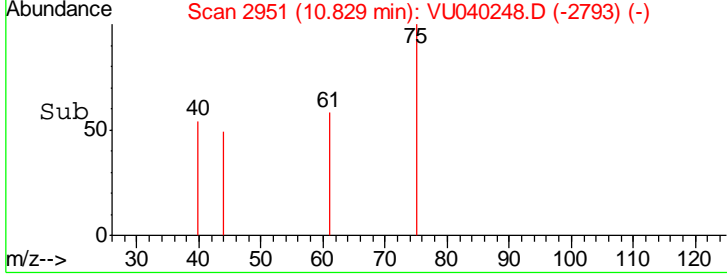
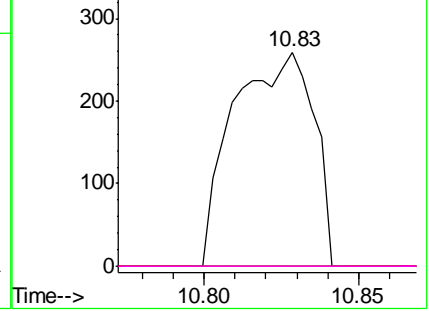
#71
 1,2,3-Trichloropropane
 Concen: 0.046 ug/l
 RT: 10.83 min Scan# 2951
 Delta R.T. 0.01 min
 Lab File: VU040248.D
 Acq: 22 Sep 2020 12:40

Instrument : MSVOA_V
 ClientSampleID : VU0922WBL01

Tgt Ion	Resp	Lower	Upper
75	100		
77	0.0	0.0	111.4
110	0.0	0.0	70.8
97	0.0	0.0	36.0

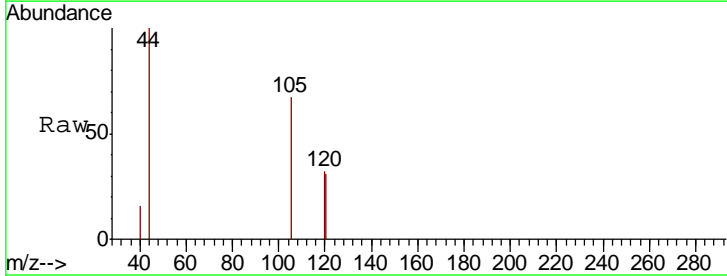


Abundance Ion 75.00 (74.70 to 75.70): VU0
 Ion 77.00 (76.70 to 77.70): VU0
 Ion 110.00 (109.70 to 110.70): VU0
 Ion 97.00 (96.70 to 97.70): VU0

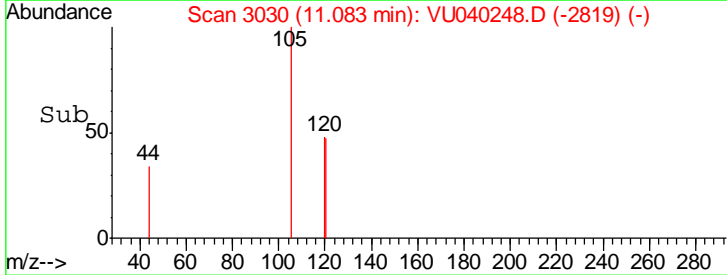
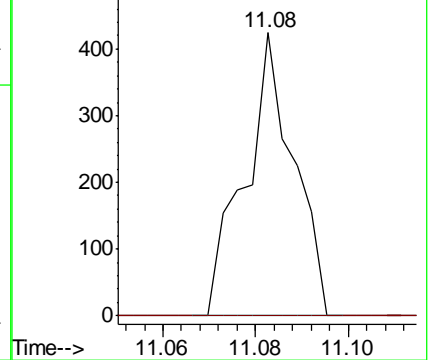


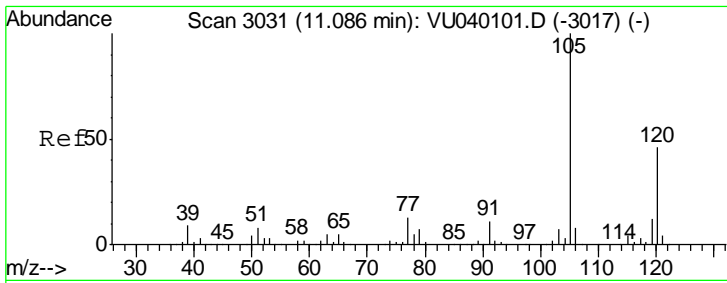
#73
 n-propylbenzene
 Concen: 0.015 ug/l
 RT: 11.08 min Scan# 3030
 Delta R.T. 0.18 min
 Lab File: VU040248.D
 Acq: 22 Sep 2020 12:40

Tgt Ion	Resp	Lower	Upper
120	100		
91	0.0	380.4	570.6#



Abundance Ion 120.00 (119.70 to 120.70): V
 Ion 91.00 (90.70 to 91.70): VU0

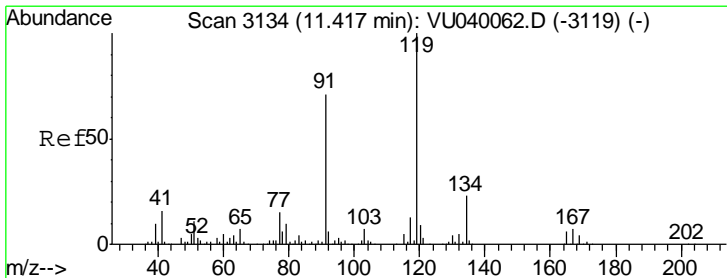
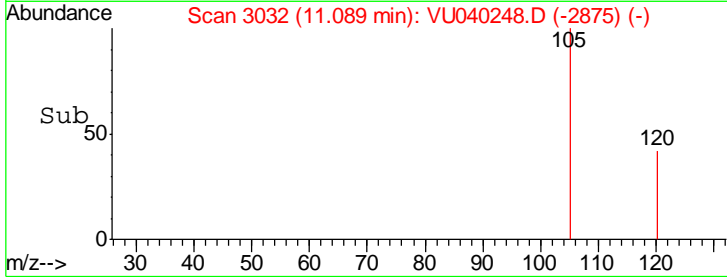
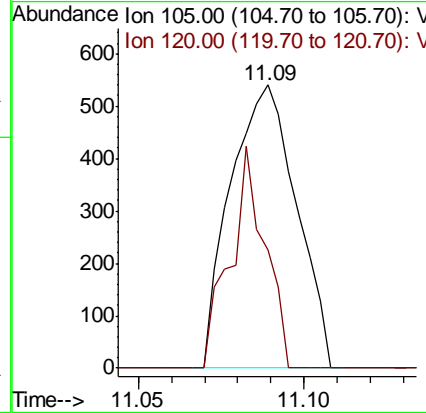
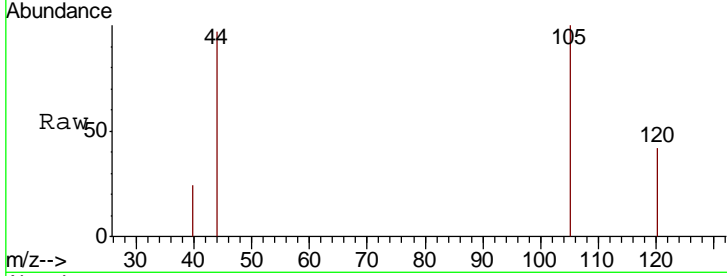




#75
 1,3,5-Trimethylbenzene
 Concen: 0.017 ug/l
 RT: 11.09 min Scan# 3032
 Delta R.T. 0.00 min
 Lab File: VU040248.D
 Acq: 22 Sep 2020 12:40

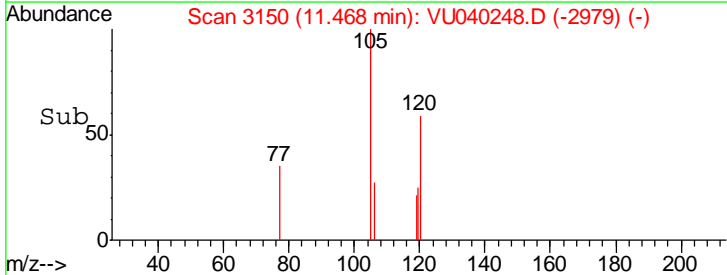
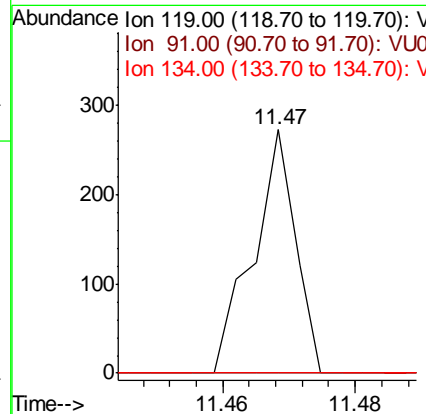
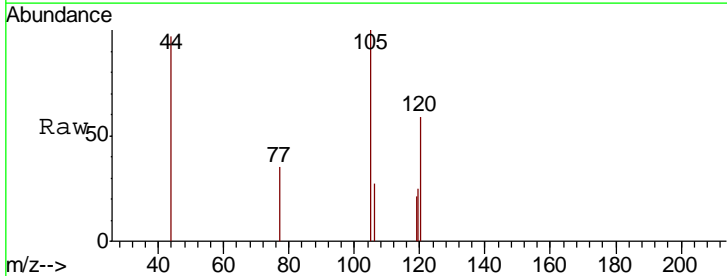
Instrument :
 MSVOA_V
 ClientSampled :
 VU0922WBL01

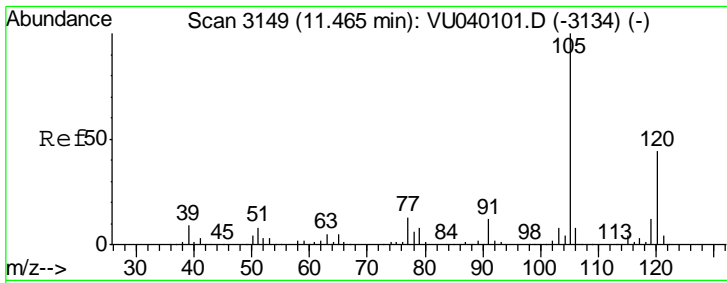
Tgt Ion: 105 Resp: 746
 Ion Ratio Lower Upper
 105 100
 120 41.6 36.6 55.0



#77
 tert-Butylbenzene
 Concen: 0.022 ug/l
 RT: 11.47 min Scan# 3150
 Delta R.T. 0.05 min
 Lab File: VU040248.D
 Acq: 22 Sep 2020 12:40

Tgt Ion: 119 Resp: 120
 Ion Ratio Lower Upper
 119 100
 91 0.0 34.2 102.5#
 134 0.0 18.2 27.4#

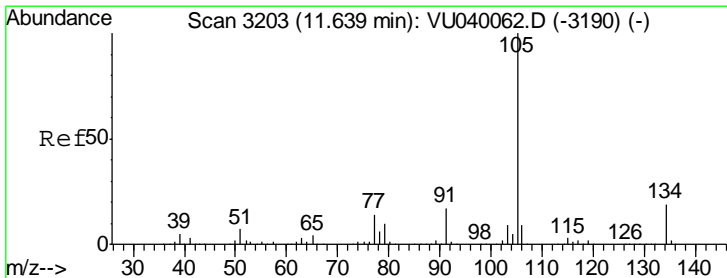
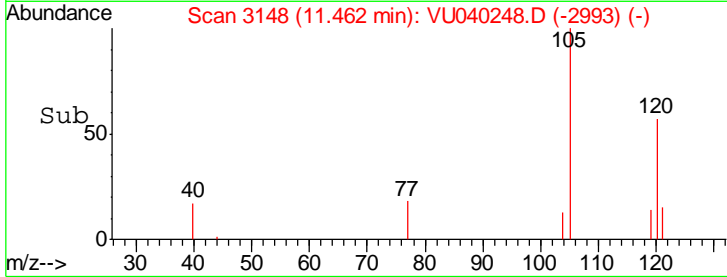
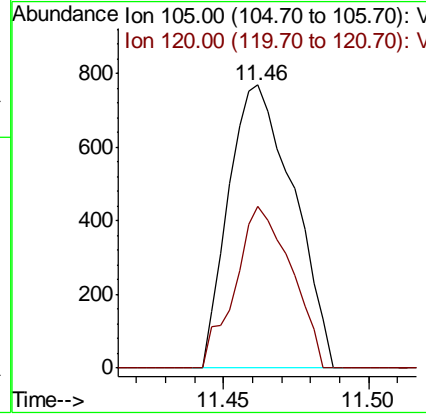
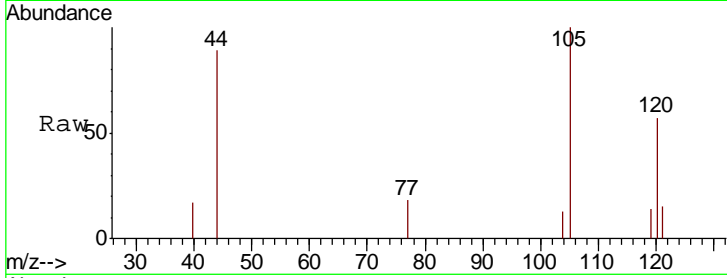




#78
 1,2,4-Trimethylbenzene
 Concen: 0.027 ug/l
 RT: 11.46 min Scan# 3148
 Delta R.T. -0.00 min
 Lab File: VU040248.D
 Acq: 22 Sep 2020 12:40

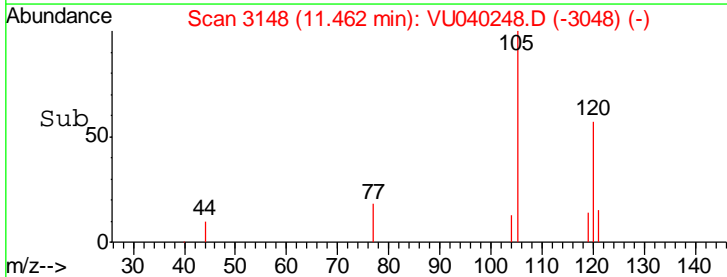
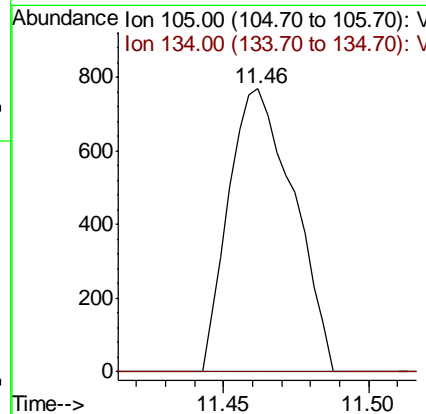
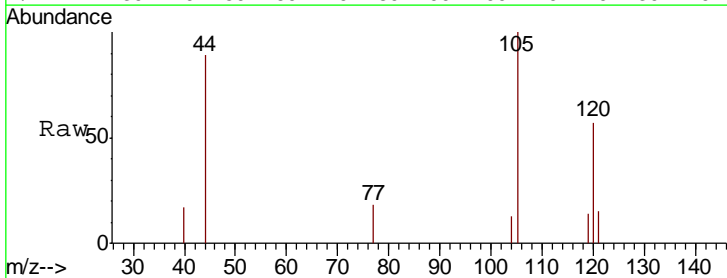
Instrument :
 MSVOA_V
 ClientSampled :
 VU0922WBL01

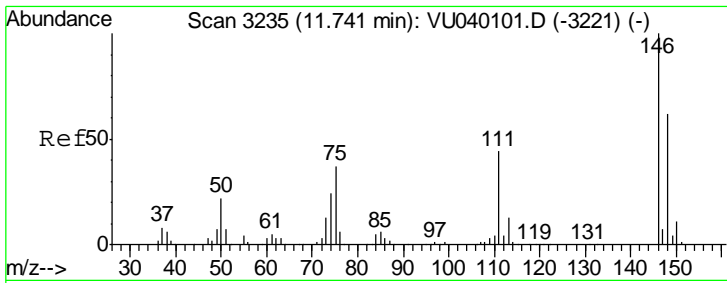
Tgt Ion:105 Resp: 1194
 Ion Ratio Lower Upper
 105 100
 120 49.5 21.9 65.5



#79
 sec-Butylbenzene
 Concen: 0.027 ug/l
 RT: 11.46 min Scan# 3148
 Delta R.T. -0.18 min
 Lab File: VU040248.D
 Acq: 22 Sep 2020 12:40

Tgt Ion:105 Resp: 1194
 Ion Ratio Lower Upper
 105 100
 134 0.0 15.0 22.4#

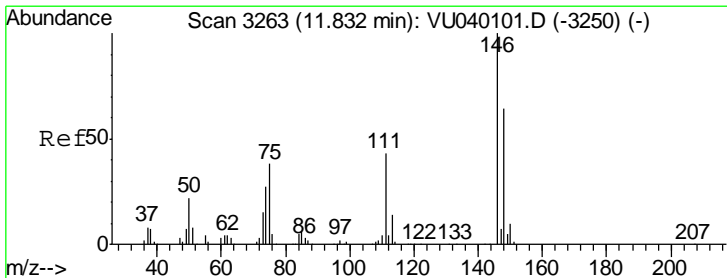
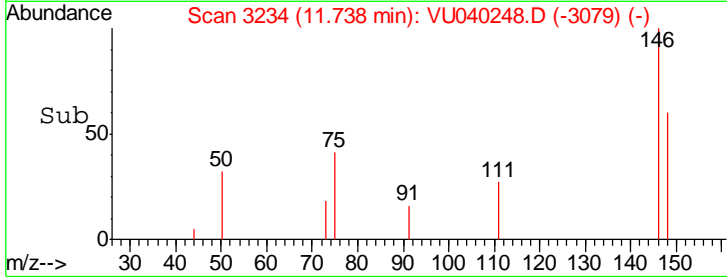
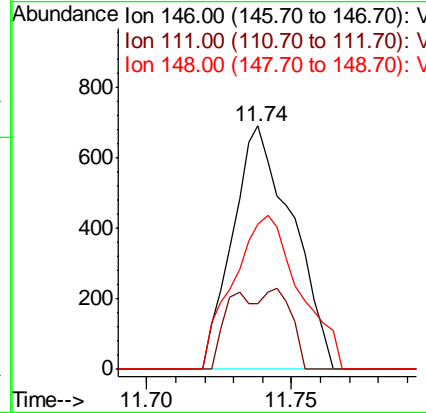
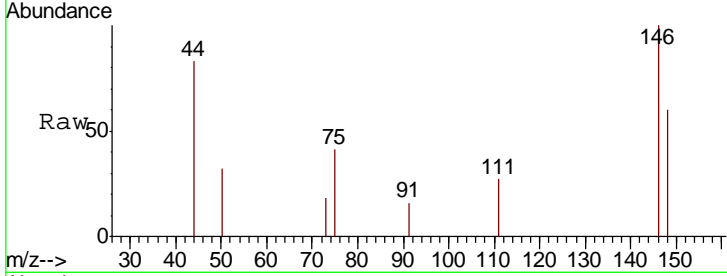




#82
 1,3-Dichlorobenzene
 Concen: 0.038 ug/l
 RT: 11.74 min Scan# 3234
 Delta R.T. -0.00 min
 Lab File: VU040248.D
 Acq: 22 Sep 2020 12:40

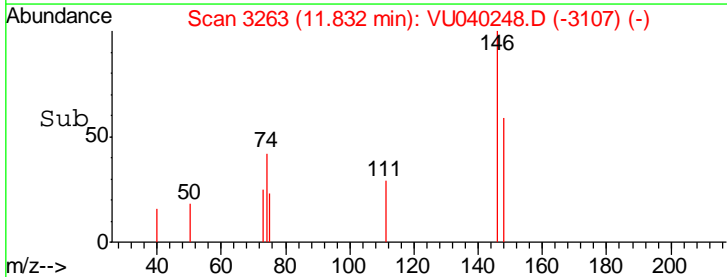
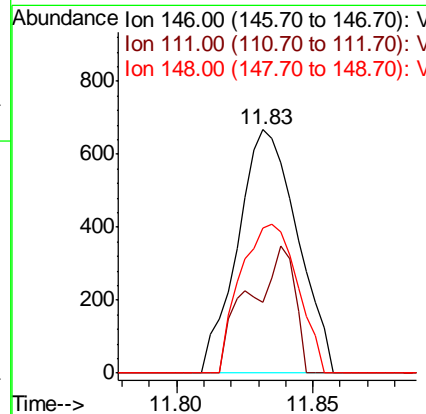
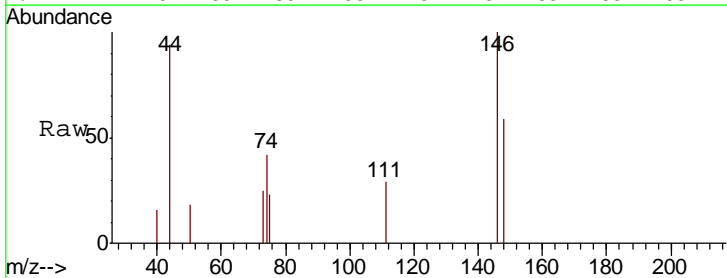
Instrument :
 MSVOA_V
 ClientSampled :
 VU0922WBL01

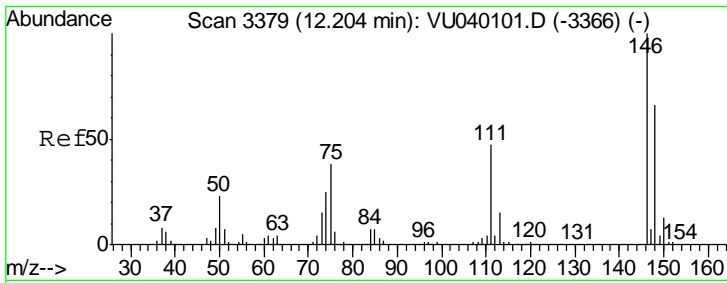
Tgt Ion	Resp	Lower	Upper
146	100		
111	14.2	35.4	53.0#
148	70.4	49.7	74.5



#83
 1,4-Dichlorobenzene
 Concen: 0.040 ug/l
 RT: 11.83 min Scan# 3263
 Delta R.T. 0.00 min
 Lab File: VU040248.D
 Acq: 22 Sep 2020 12:40

Tgt Ion	Resp	Lower	Upper
146	100		
111	20.8	34.2	51.2#
148	58.7	50.2	75.2

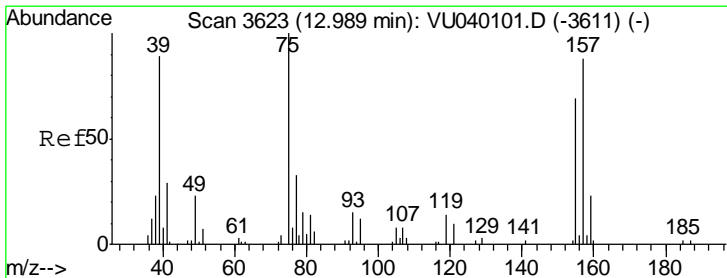
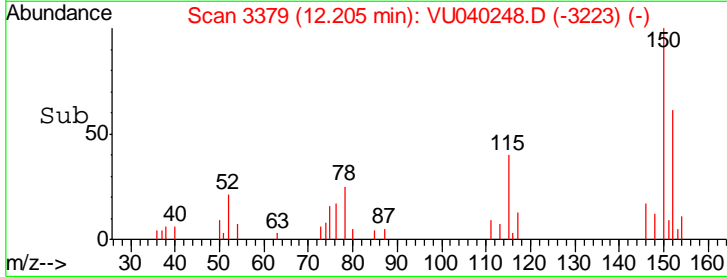
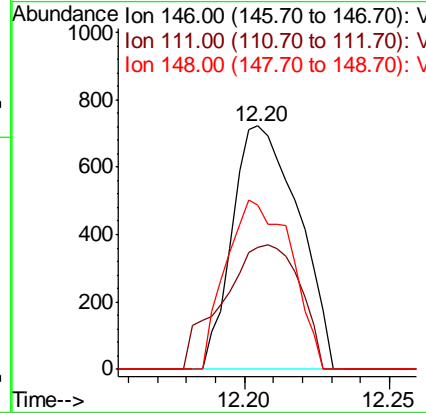
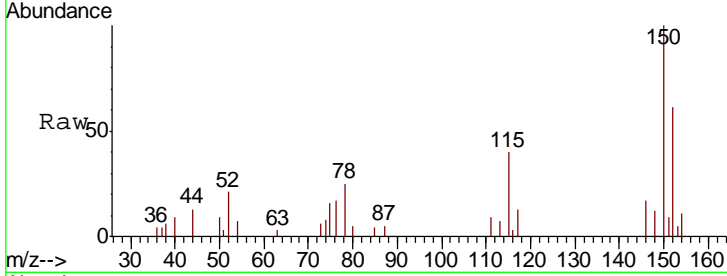




#85
 1,2-Dichlorobenzene
 Concen: 0.047 ug/l
 RT: 12.20 min Scan# 3379
 Delta R.T. 0.00 min
 Lab File: VU040248.D
 Acq: 22 Sep 2020 12:40

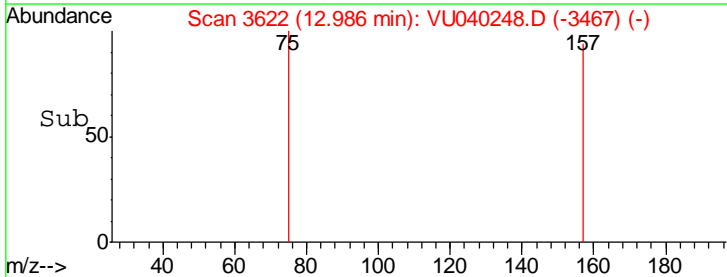
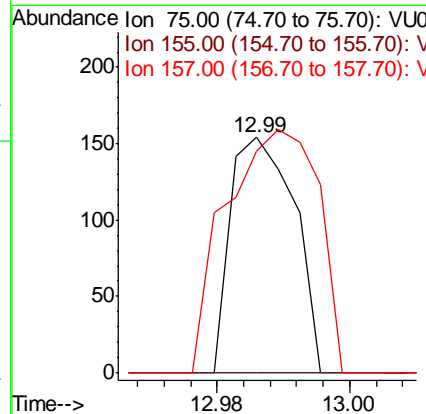
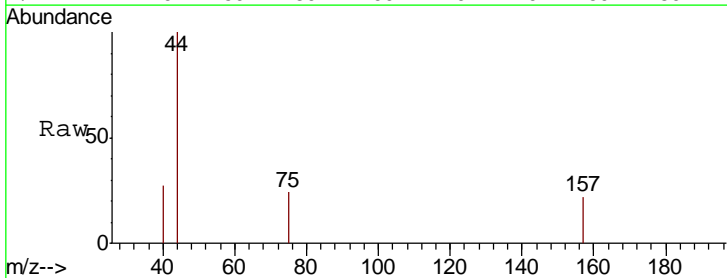
Instrument :
 MSVOA_V
 ClientSampleId :
 VU0922WBL01

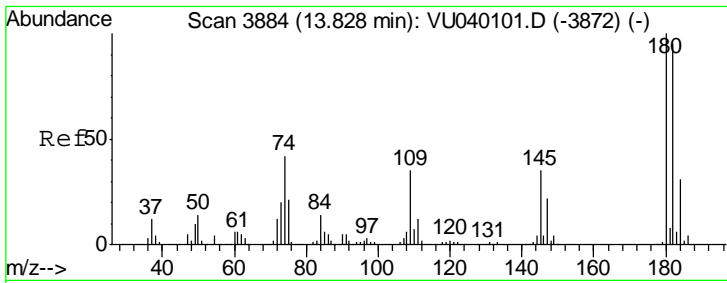
Tgt Ion	Resp	Lower	Upper
146	100		
111	59.7	22.9	68.7
148	68.7	31.1	93.2



#86
 1,2-Dibromo-3-Chloropropane
 Concen: 0.046 ug/l
 RT: 12.99 min Scan# 3622
 Delta R.T. -0.00 min
 Lab File: VU040248.D
 Acq: 22 Sep 2020 12:40

Tgt Ion	Resp	Lower	Upper
75	100		
155	0.0	53.4	80.0#
157	149.5	65.8	98.8#

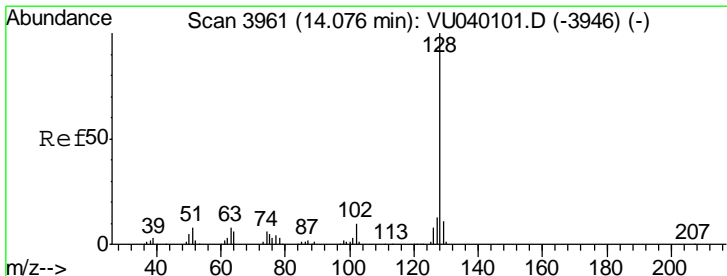
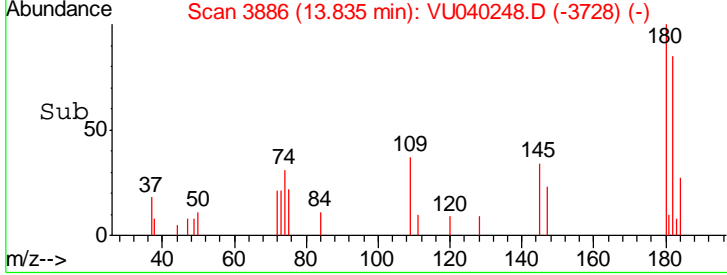
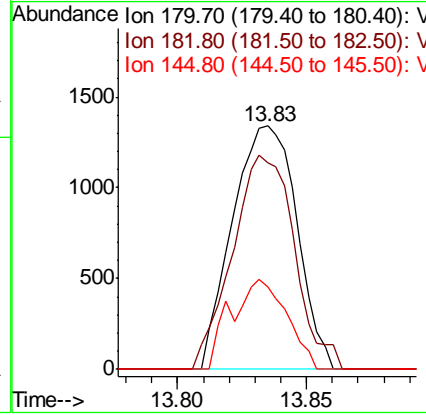
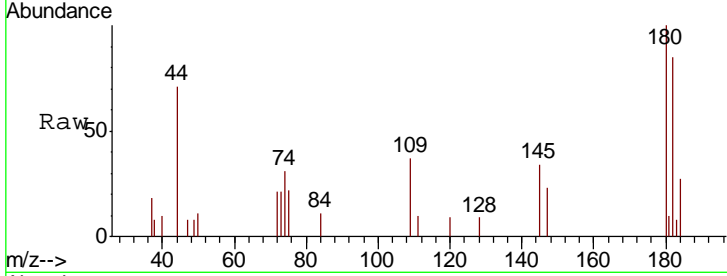




#87
 1,2,4-Trichlorobenzene
 Concen: 0.166 ug/l
 RT: 13.83 min Scan# 3886
 Delta R.T. 0.01 min
 Lab File: VU040248.D
 Acq: 22 Sep 2020 12:40

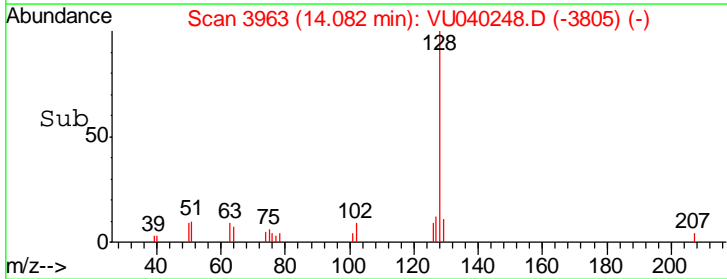
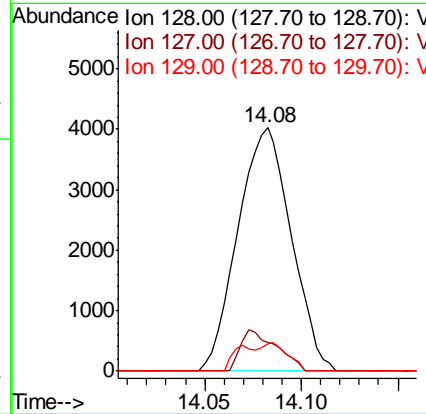
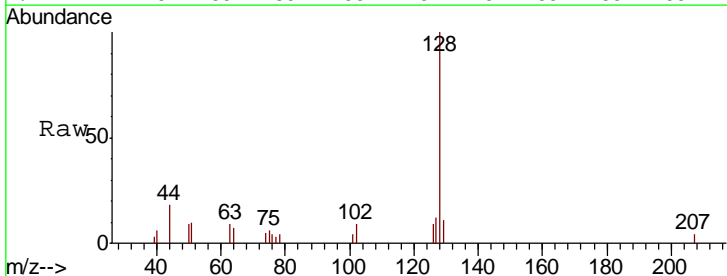
Instrument :
 MSVOA_V
 ClientSampleId :
 VU0922WBL01

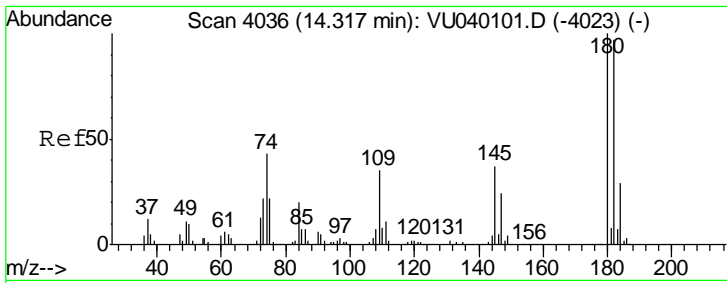
Tgt Ion	Resp	Lower	Upper
180	100		
182	84.9	75.0	112.4
145	31.9	27.7	41.5



#89
 Naphthalene
 Concen: 0.298 ug/l
 RT: 14.08 min Scan# 3963
 Delta R.T. 0.01 min
 Lab File: VU040248.D
 Acq: 22 Sep 2020 12:40

Tgt Ion	Resp	Lower	Upper
128	100		
127	0.0	10.3	15.5#
129	5.9	8.3	12.5#





#90
 1,2,3-Trichlorobenzene
 Concen: 0.203 ug/l
 RT: 14.32 min Scan# 4038
 Delta R.T. 0.01 min
 Lab File: VU040248.D
 Acq: 22 Sep 2020 12:40

Instrument : MSVOA_V
 ClientSampleId : VU0922WBL01

Tot Ion:180 Resp: 2703

Ion	Ratio	Lower	Upper
180	100		
182	84.4	76.0	114.0
145	33.7	30.6	45.8

