

Data File : VV012944.D
 Acq On : 23 Sep 2019 18:44
 Operator : SY/MD
 Sample : K4958-10
 Misc : 5.72G/10ML/MSVOA_V/SOIL
 ALS Vial : 1 Sample Multiplier: 1

Instrument :
 MSVOA_V
 ClientSampleId :
 ESNZ2

Quant Time: Sep 24 07:42:53 2019
 Quant Method : Z:\VOASRV\HPCHEM1\MSVOA_V\METHOD\SOM2VLM092319S.M
 Quant Title : VOC Analysis
 QLast Update : Tue Sep 24 07:38:53 2019
 Response via : Initial Calibration

Internal Standards	R.T.	QIon	Response	Conc	Units	Dev(Min)
1) 1,4-Difluorobenzene	5.66	114	687465	25.00	ug/L	0.00
28) Chlorobenzene-d5	8.89	117	655021	25.00	ug/L	0.00
60) 1,4-Dichlorobenzene-d4	11.29	152	269916	25.00	ug/L	0.00

System Monitoring Compounds

4) Vinyl Chloride-d3	1.32	65	246626	23.12	ug/L	0.00
Spiked Amount	25.000	Range	30 - 150	Recovery	=	92.48%
7) Chloroethane-d5	1.58	69	219503	25.45	ug/L	0.00
Spiked Amount	25.000	Range	30 - 150	Recovery	=	101.80%
10) 1,1-Dichloroethene-d2	2.13	63	313254	17.66	ug/L	0.00
Spiked Amount	25.000	Range	45 - 110	Recovery	=	70.64%
20) 2-Butanone-d5	3.93	46	150113	40.76	ug/L	-0.01
Spiked Amount	50.000	Range	20 - 135	Recovery	=	81.52%
24) Chloroform-d	4.40	84	470422	24.91	ug/L	0.00
Spiked Amount	25.000	Range	40 - 150	Recovery	=	99.64%
26) 1,2-Dichloroethane-d4	5.08	65	273464	24.91	ug/L	0.00
Spiked Amount	25.000	Range	70 - 130	Recovery	=	99.64%
29) Benzene-d6	5.10	84	968352	26.48	ug/L	0.00
Spiked Amount	25.000	Range	20 - 135	Recovery	=	105.92%
33) 1,2-Dichloropropane-d6	6.12	67	311986	27.22	ug/L	0.00
Spiked Amount	25.000	Range	70 - 120	Recovery	=	108.88%
37) Toluene-d8	7.36	98	821945	24.76	ug/L	0.00
Spiked Amount	25.000	Range	30 - 130	Recovery	=	99.04%
38) trans-1,3-Dichloropropene-	7.66	79	115414	23.78	ug/L	0.00
Spiked Amount	25.000	Range	30 - 135	Recovery	=	95.12%
39) 2-Hexanone-d5	8.13	63	91039	39.47	ug/L	0.00
Spiked Amount	50.000	Range	20 - 135	Recovery	=	78.94%
48) 1,1,2,2-Tetrachloroethane-	10.26	84	236597	21.73	ug/L	0.00
Spiked Amount	25.000	Range	45 - 120	Recovery	=	86.92%
61) 1,2-Dichlorobenzene-d4	11.67	152	281686	26.86	ug/L	0.00
Spiked Amount	25.000	Range	75 - 120	Recovery	=	107.44%

Target Compounds

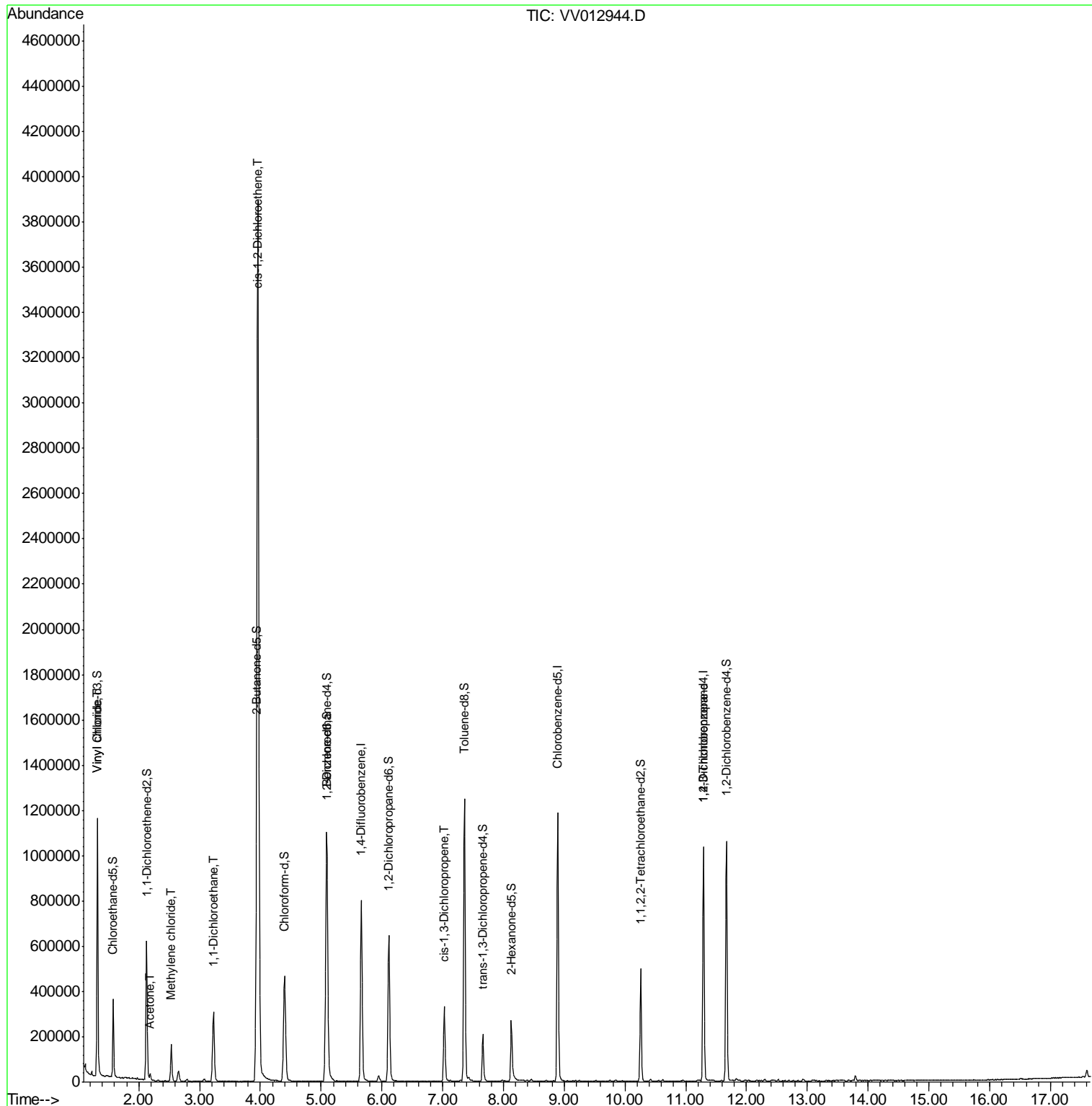
						Qvalue
5) Vinyl chloride	1.32	62	520630	53.336	ug/L	100
13) Acetone	2.19	43	26572	6.788	ug/L	96
16) Methylene chloride	2.53	84	61966	6.030	ug/L	98
19) 1,1-Dichloroethane	3.23	63	314318	18.725	ug/L	100
22) cis-1,2-Dichloroethene	3.96	96	2140160	212.586	ug/L	97
42) cis-1,3-Dichloropropene	7.03	75	8044	0.577	ug/L #	77
59) 1,2,3-Trichloropropane	11.29	75	30250	3.681	ug/L	89

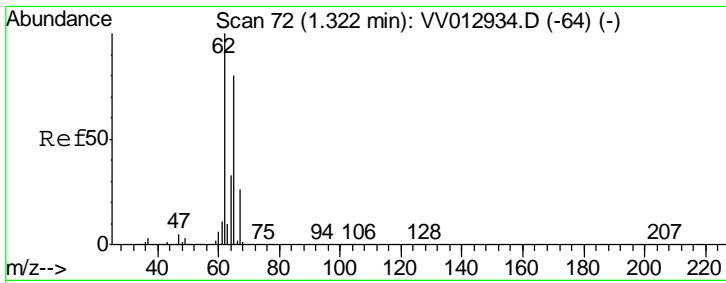
(#) = qualifier out of range (m) = manual integration (+) = signals summed

Data File : VV012944.D
Acq On : 23 Sep 2019 18:44
Operator : SY/MD
Sample : K4958-10
Misc : 5.72G/10ML/MSVOA_V/SOIL
ALS Vial : 1 Sample Multiplier: 1

Instrument :
MSVOA_V
ClientSampled :
ESNZ2

Quant Time: Sep 24 07:42:53 2019
Quant Method : Z:\VOASRV\HPCHEM1\MSVOA_V\METHOD\SOM2VLM092319S.M
Quant Title : VOC Analysis
QLast Update : Tue Sep 24 07:38:53 2019
Response via : Initial Calibration

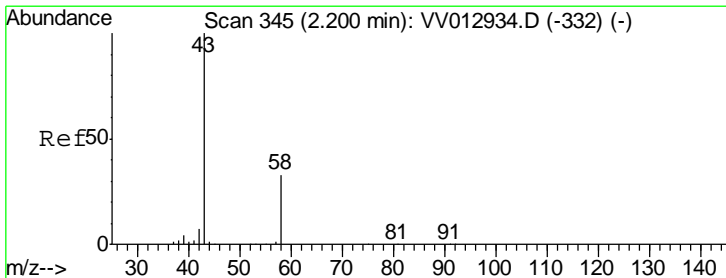
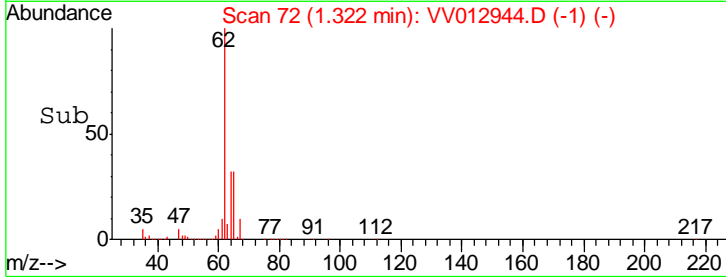
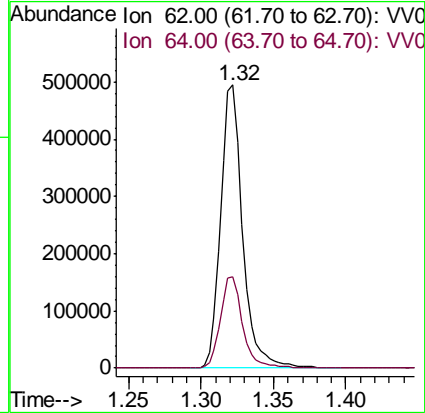
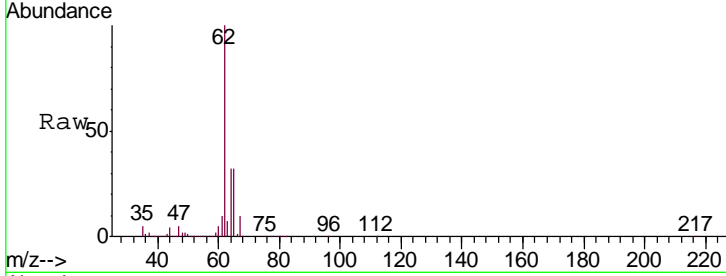




#5
 Vinyl chloride
 Concen: 53.336 ug/L
 RT: 1.32 min Scan# 72
 Delta R.T. -0.00 min
 Lab File: VV012944.D
 Acq: 23 Sep 2019 18:44

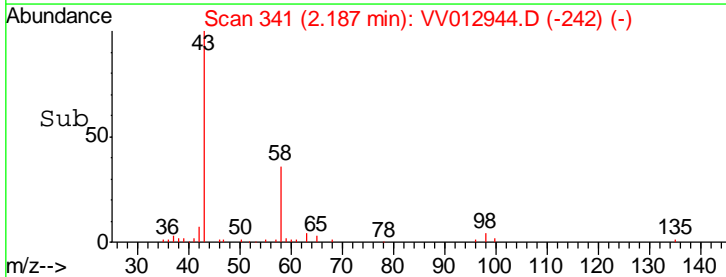
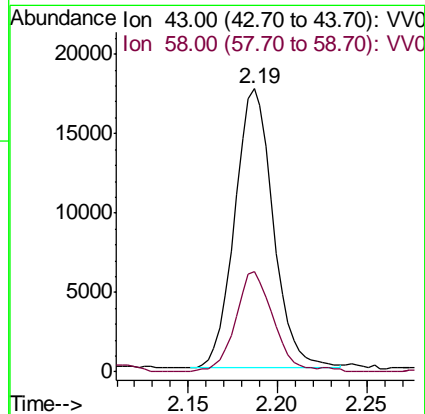
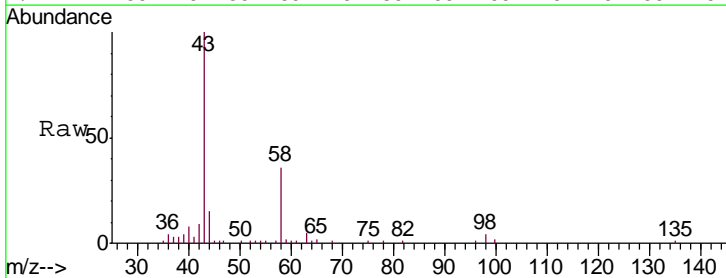
Instrument : MSVOA_V
 ClientSampled : ESNZ2

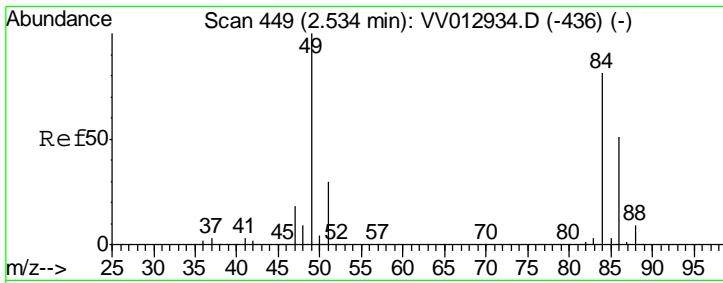
Tgt Ion	Resp	Lower	Upper
62	100		
64	32.5	22.7	42.1



#13
 Acetone
 Concen: 6.788 ug/L
 RT: 2.19 min Scan# 341
 Delta R.T. -0.01 min
 Lab File: VV012944.D
 Acq: 23 Sep 2019 18:44

Tgt Ion	Resp	Lower	Upper
43	100		
58	35.0	0.0	65.0

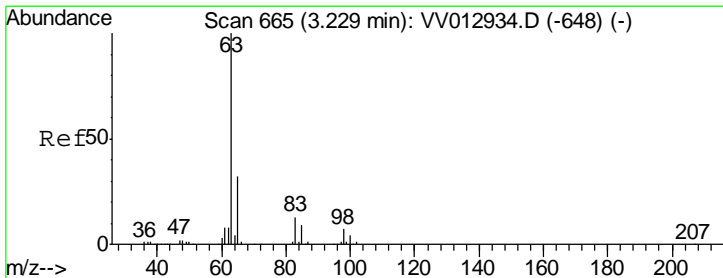
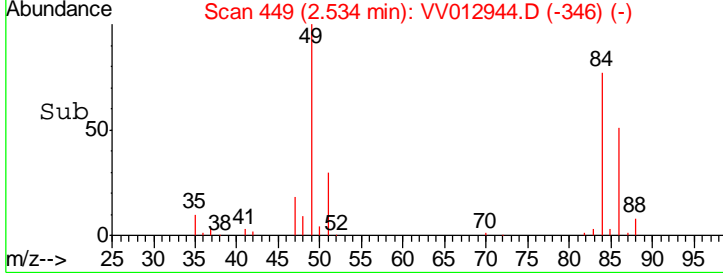
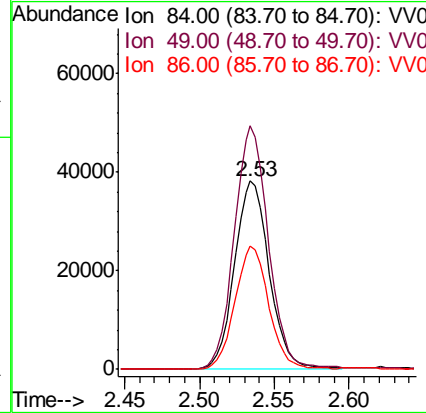
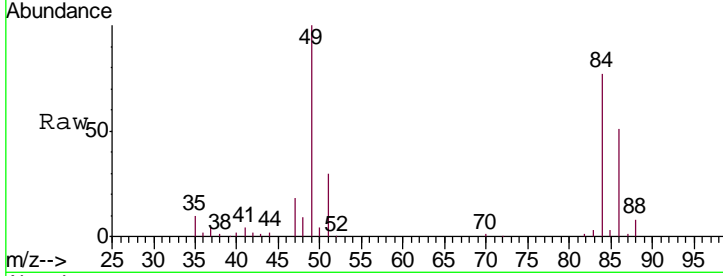




#16
 Methylene chloride
 Concen: 6.030 ug/L
 RT: 2.53 min Scan# 449
 Delta R.T. -0.00 min
 Lab File: VV012944.D
 Acq: 23 Sep 2019 18:44

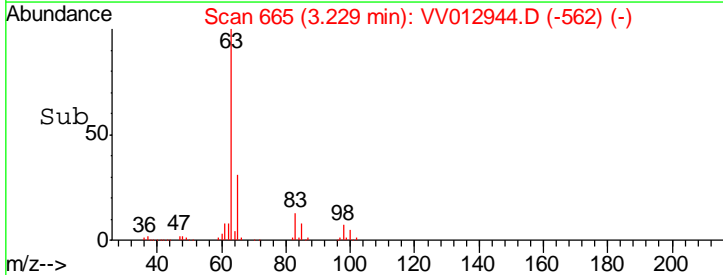
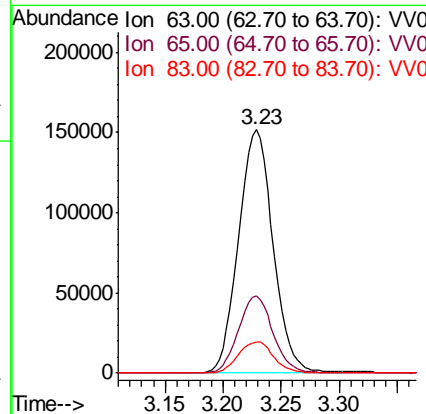
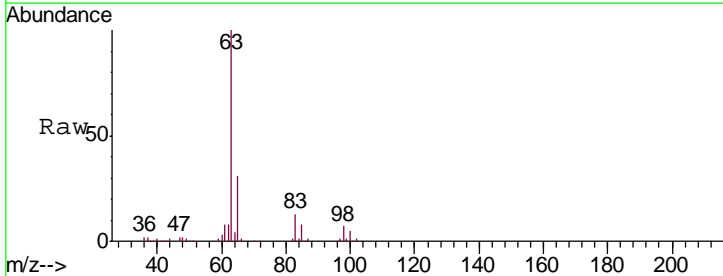
Instrument :
 MSVOA_V
 ClientSampled :
 ESNZ2

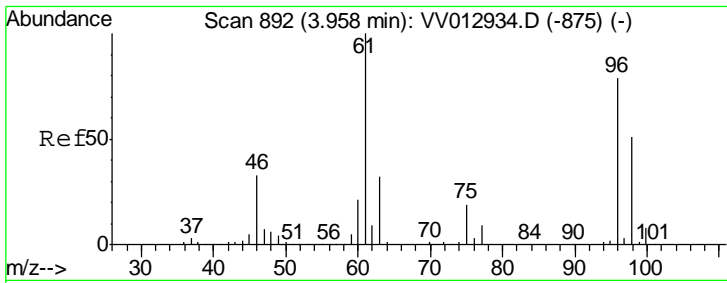
Tgt Ion	Resp	Lower	Upper
84	61966		
49	129.2	88.3	164.1
86	65.4	44.9	83.3



#19
 1,1-Dichloroethane
 Concen: 18.725 ug/L
 RT: 3.23 min Scan# 665
 Delta R.T. -0.00 min
 Lab File: VV012944.D
 Acq: 23 Sep 2019 18:44

Tgt Ion	Resp	Lower	Upper
63	314318		
65	31.5	22.0	41.0
83	12.8	9.2	17.0

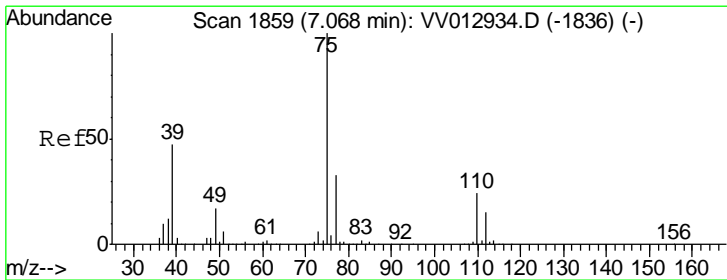
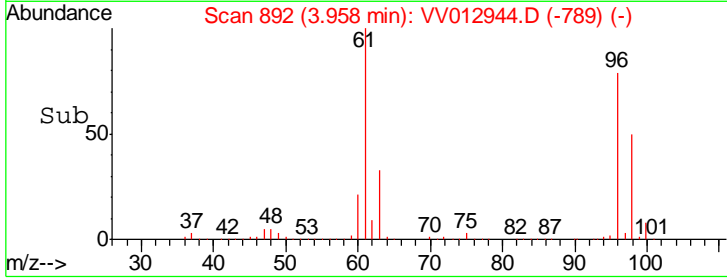
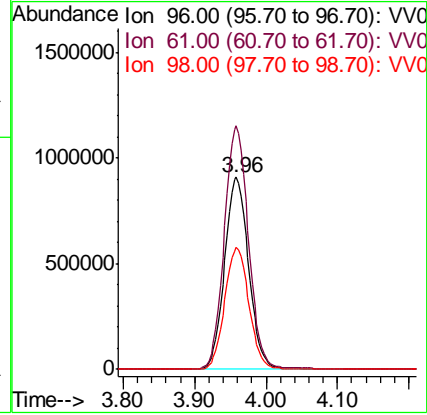
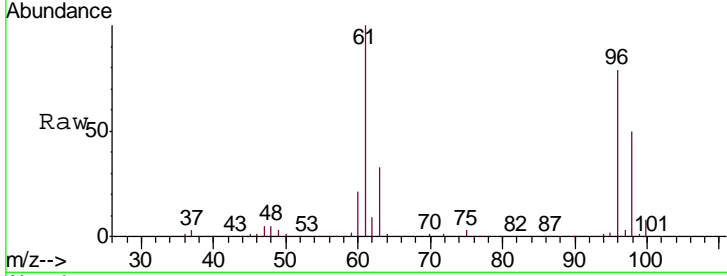




#22
 cis-1,2-Dichloroethene
 Concen: 212.586 ug/L
 RT: 3.96 min Scan# 892
 Delta R.T. -0.00 min
 Lab File: VV012944.D
 Acq: 23 Sep 2019 18:44

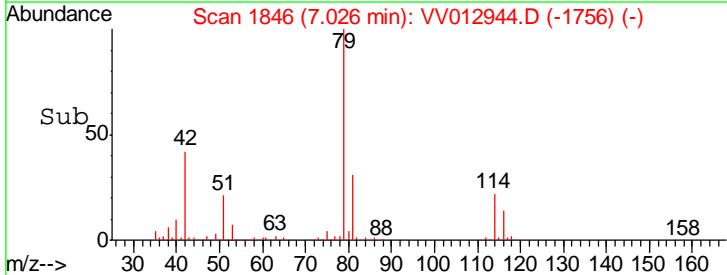
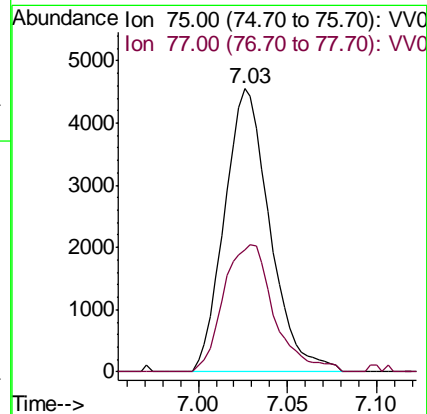
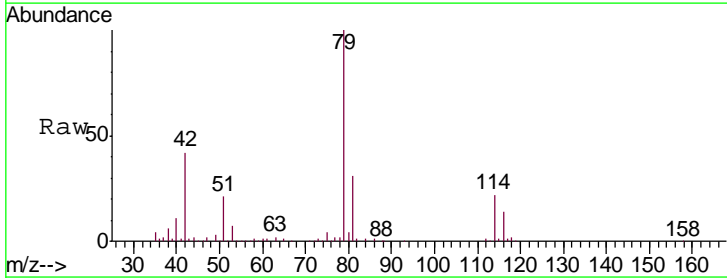
Instrument :
 MSVOA_V
 ClientSampleID :
 ESNZ2

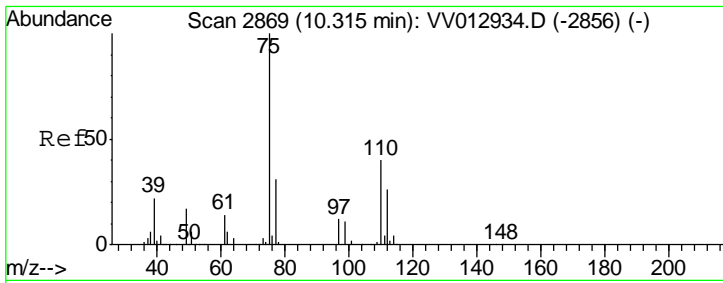
Tgt Ion	Resp	Lower	Upper
96	2140160		
Ion Ratio			
96	100		
61	126.7	90.9	168.7
98	63.3	45.6	84.6



#42
 cis-1,3-Dichloropropene
 Concen: 0.577 ug/L
 RT: 7.03 min Scan# 1846
 Delta R.T. -0.04 min
 Lab File: VV012944.D
 Acq: 23 Sep 2019 18:44

Tgt Ion	Resp	Lower	Upper
75	8044		
Ion Ratio			
75	100		
77	43.3	21.5	39.9#





#59
 1,2,3-Trichloropropane
 Concen: 3.681 ug/L
 RT: 11.29 min Scan# 3173
 Delta R.T. 0.98 min
 Lab File: VV012944.D
 Acq: 23 Sep 2019 18:44

Instrument : MSVOA_V
 ClientSampled : ESNZ2

Tgt Ion: 75 Resp: 30250

Ion	Ratio	Lower	Upper
75	100		
77	37.8	25.4	38.0

