

Data Path : Z:\voasrv\HPCHEM1\MSVOA_V\Data\VW092321\
 Data File : VW022299.D
 Acq On : 23 Sep 2021 21:47
 Operator : SY/MD
 Sample : VW0923WBL02
 Misc : 25.0mL/MSVOA_V/WATER
 ALS Vial : 30 Sample Multiplier: 1

Instrument :
 MSVOA_V
 ClientSampled :

Quant Time: Sep 24 05:10:54 2021
 Quant Method : Z:\voasrv\HPCHEM1\MSVOA_V\Method\SFAMVTR092321WMA.M
 Quant Title : TRACE VOA SFAM1.0
 QLast Update : Fri Sep 24 05:07:58 2021
 Response via : Initial Calibration

Compound	R.T.	QIon	Response	Conc	Units	Dev(Min)

Internal Standards						
1) 1,4-Difluorobenzene	5.619	114	123292	5.000	ug/L	0.00
28) Chlorobenzene-d5	8.857	117	120516	5.000	ug/L	0.00
58) 1,4-Dichlorobenzene-d4	11.252	152	51955	5.000	ug/L	0.00
System Monitoring Compounds						
4) Vinyl Chloride-d3	1.301	65	29720	4.784	ug/L	0.00
Spiked Amount	5.000	Range 40 - 130	Recovery	=	95.600%	
7) Chloroethane-d5	1.564	69	35798	4.924	ug/L	0.00
Spiked Amount	5.000	Range 65 - 130	Recovery	=	98.400%	
11) 1,1-Dichloroethene-d2	2.101	63	51326	3.465	ug/L	0.00
Spiked Amount	5.000	Range 60 - 125	Recovery	=	69.400%	
20) 2-Butanone-d5	3.918	46	128341	50.553	ug/L	0.00
Spiked Amount	50.000	Range 40 - 130	Recovery	=	101.100%	
24) Chloroform-d	4.352	84	82363	4.622	ug/L	0.00
Spiked Amount	5.000	Range 70 - 125	Recovery	=	92.400%	
26) 1,2-Dichloroethane-d4	5.037	65	42951	5.045	ug/L	0.00
Spiked Amount	5.000	Range 70 - 130	Recovery	=	101.000%	
32) Benzene-d6	5.050	84	169782	5.010	ug/L	0.00
Spiked Amount	5.000	Range 70 - 125	Recovery	=	100.200%	
36) 1,2-Dichloropropane-d6	6.072	67	53663	5.071	ug/L	0.00
Spiked Amount	5.000	Range 60 - 140	Recovery	=	101.400%	
41) Toluene-d8	7.320	98	140293	4.584	ug/L	0.00
Spiked Amount	5.000	Range 70 - 130	Recovery	=	91.600%	
43) trans-1,3-Dichloroprop...	7.628	79	14067	4.352	ug/L	0.00
Spiked Amount	5.000	Range 55 - 130	Recovery	=	87.000%	
46) 2-Hexanone-d5	8.095	63	104258	51.876	ug/L	0.00
Spiked Amount	50.000	Range 45 - 130	Recovery	=	103.760%	
56) 1,1,2,2-Tetrachloroeth...	10.220	84	42937	4.819	ug/L	0.00
Spiked Amount	5.000	Range 65 - 120	Recovery	=	96.400%	
66) 1,2-Dichlorobenzene-d4	11.628	152	52428	5.377	ug/L	0.00
Spiked Amount	5.000	Range 80 - 120	Recovery	=	107.600%	

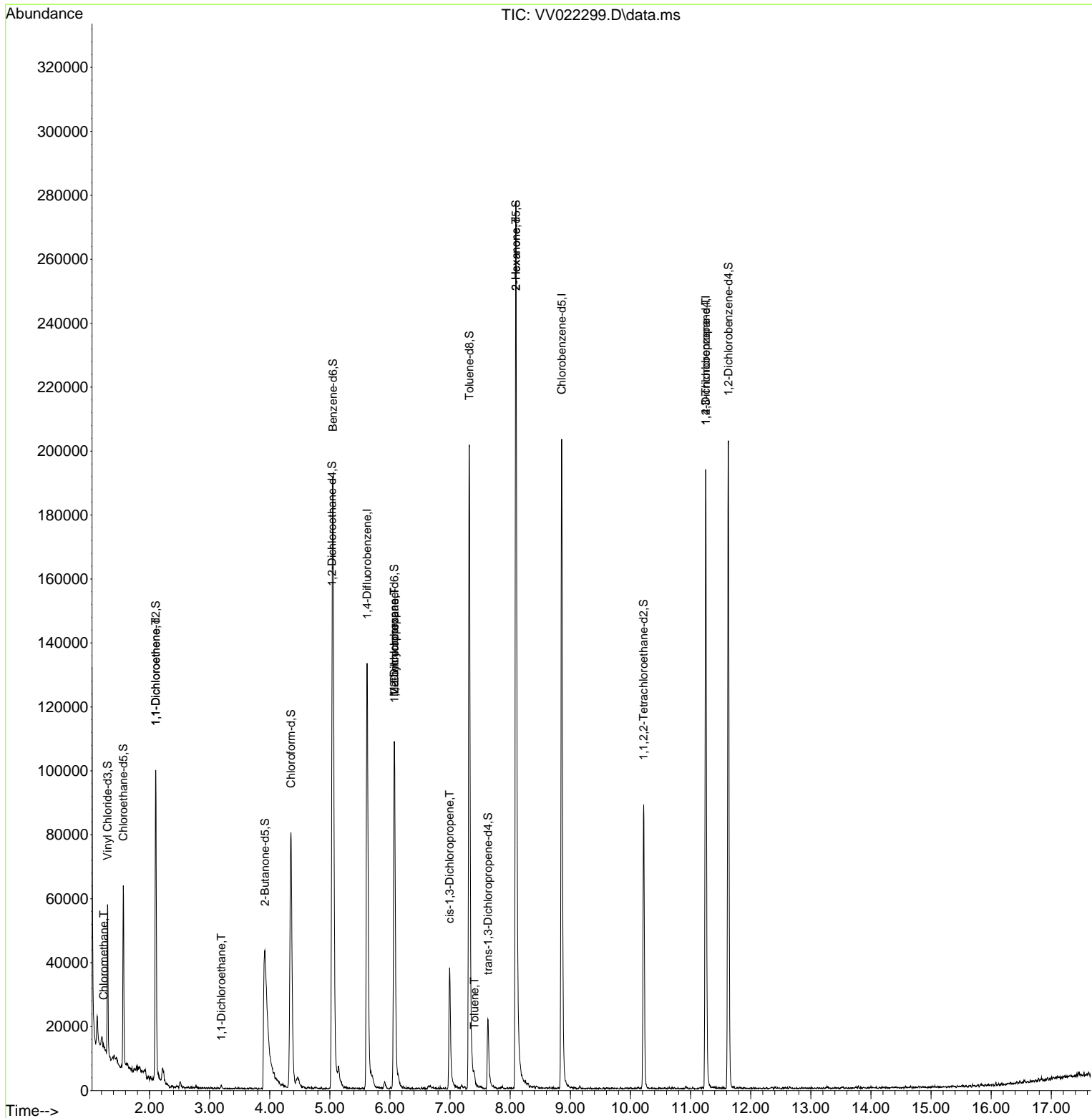
Target Compounds						Qvalue
3) Chloromethane	1.236	50	556	0.058	ug/L #	57
12) 1,1-Dichloroethene	2.105	96	571	0.082	ug/L #	1
19) 1,1-Dichloroethane	3.195	63	960	0.066	ug/L #	73
35) Methylcyclohexane	6.072	83	13059	1.015	ug/L #	19
37) 1,2-Dichloropropane	6.076	63	5836	0.729	ug/L #	84
39) cis-1,3-Dichloropropene	6.992	75	1025	0.097	ug/L #	40
42) Toluene	7.403	91	2893	0.086	ug/L	89
48) 2-Hexanone	8.095	43	12421	3.427	ug/L #	66
61) 1,2,3-Trichloropropane	11.252	75	6474	1.437	ug/L #	65

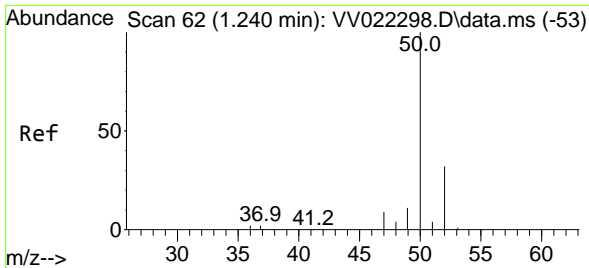
(#) = qualifier out of range (m) = manual integration (+) = signals summed

Data Path : Z:\voasrv\HPCHEM1\MSVOA_V\Data\VV092321\
 Data File : VV022299.D
 Acq On : 23 Sep 2021 21:47
 Operator : SY/MD
 Sample : VV0923WBL02
 Misc : 25.0mL/MSVOA_V/WATER
 ALS Vial : 30 Sample Multiplier: 1

Instrument :
 MSVOA_V
 ClientSampled :

Quant Time: Sep 24 05:10:54 2021
 Quant Method : Z:\voasrv\HPCHEM1\MSVOA_V\Method\SFAMVTR092321WMA.M
 Quant Title : TRACE VOA SFAM1.0
 QLast Update : Fri Sep 24 05:07:58 2021
 Response via : Initial Calibration

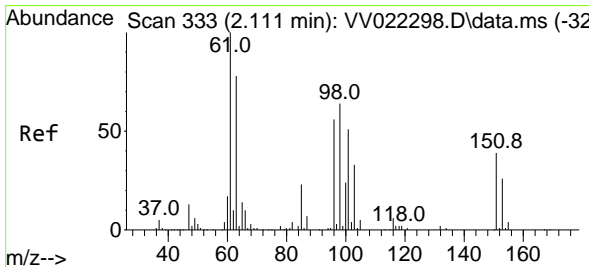
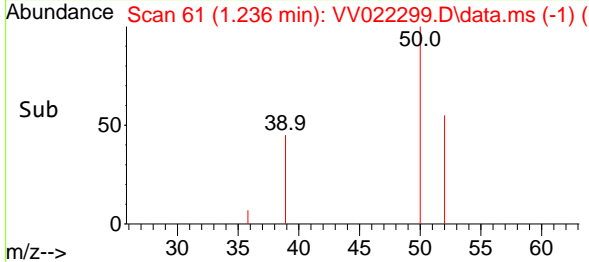
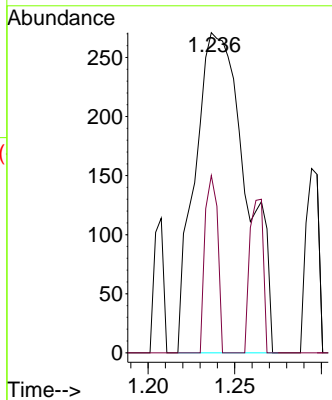
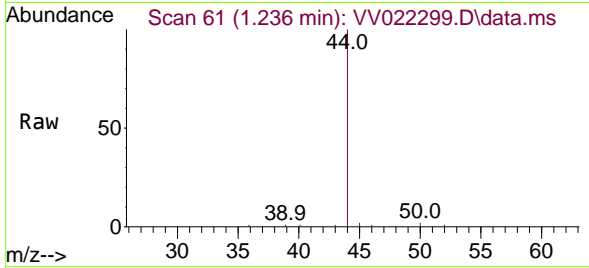




#3
 Chloromethane
 Concen: 0.058 ug/L
 RT: 1.236 min Scan# 61
 Delta R.T. -0.003 min
 Lab File: VV022299.D
 Acq: 23 Sep 2021 21:47

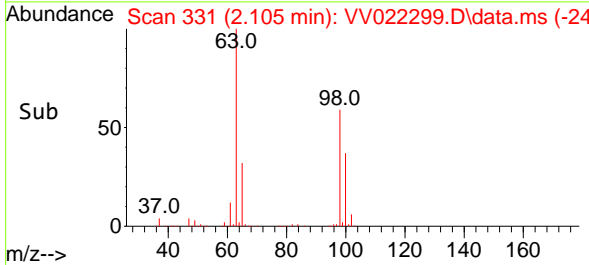
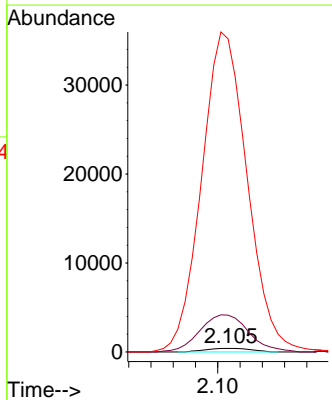
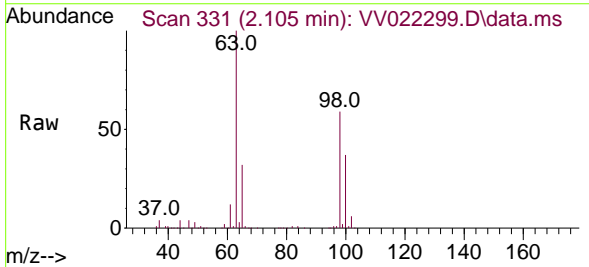
Instrument :
 MSVOA_V
 ClientSampled :

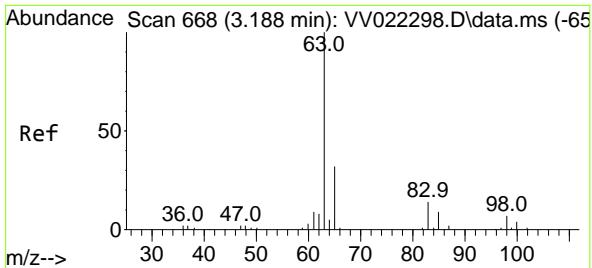
Tgt Ion: 50 Resp: 556
 Ion Ratio Lower Upper
 50 100
 52 55.4 22.2 41.2#



#12
 1,1-Dichloroethene
 Concen: 0.082 ug/L
 RT: 2.105 min Scan# 331
 Delta R.T. -0.007 min
 Lab File: VV022299.D
 Acq: 23 Sep 2021 21:47

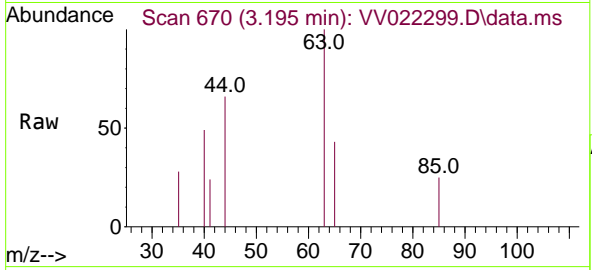
Tgt Ion: 96 Resp: 571
 Ion Ratio Lower Upper
 96 100
 61 1038.1 127.4 236.6#
 63 8822.1 100.0 185.6#





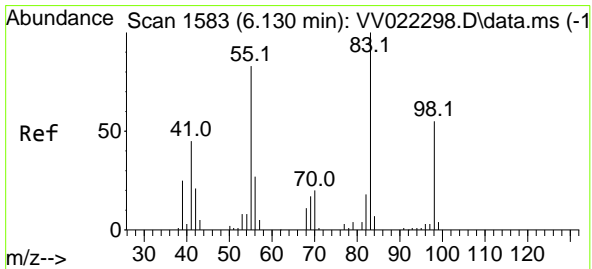
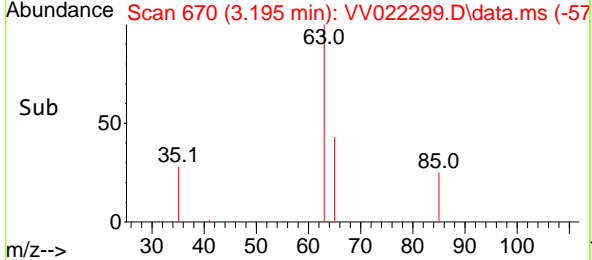
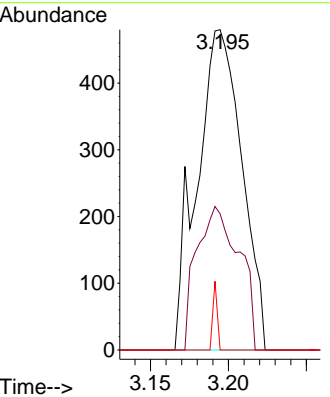
#19
 1,1-Dichloroethane
 Concen: 0.066 ug/L
 RT: 3.195 min Scan# 670
 Delta R.T. 0.006 min
 Lab File: VV022299.D
 Acq: 23 Sep 2021 21:47

Instrument :
 MSVOA_V
 ClientSampled :

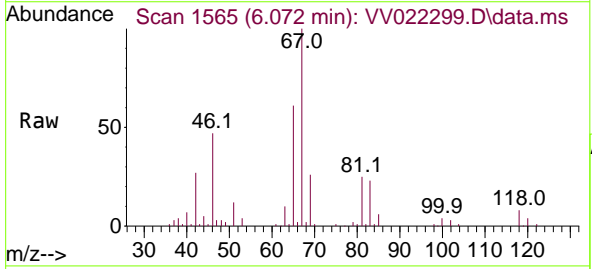


Tgt Ion: 63 Resp: 960

Ion	Ratio	Lower	Upper
63	100		
65	42.5	20.6	38.4#
83	0.0	9.4	17.4#

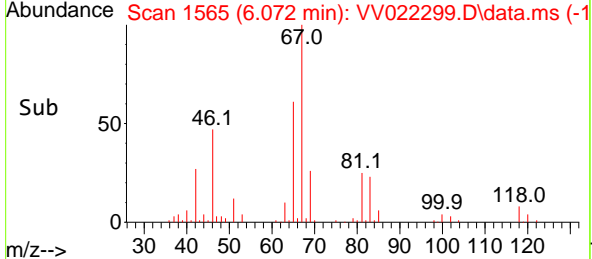
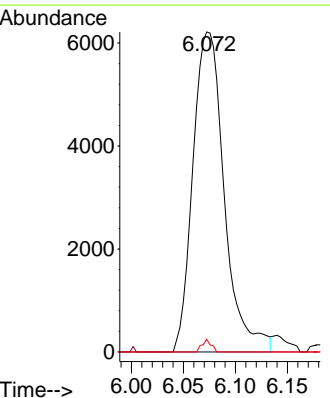


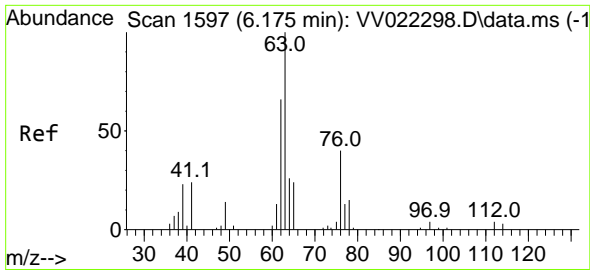
#35
 Methylcyclohexane
 Concen: 1.015 ug/L
 RT: 6.072 min Scan# 1565
 Delta R.T. -0.058 min
 Lab File: VV022299.D
 Acq: 23 Sep 2021 21:47



Tgt Ion: 83 Resp: 13059

Ion	Ratio	Lower	Upper
83	100		
55	0.2	60.2	90.2#
98	1.1	39.5	59.3#

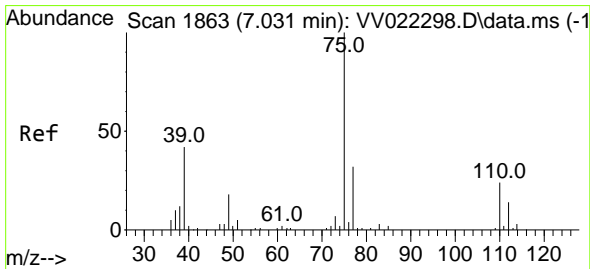
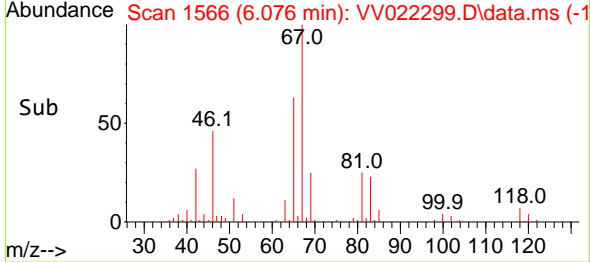
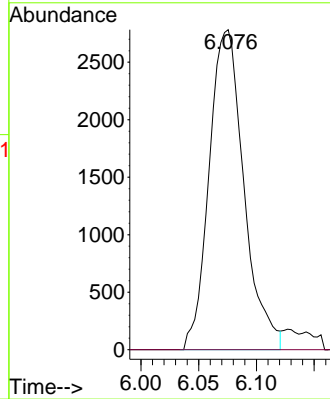
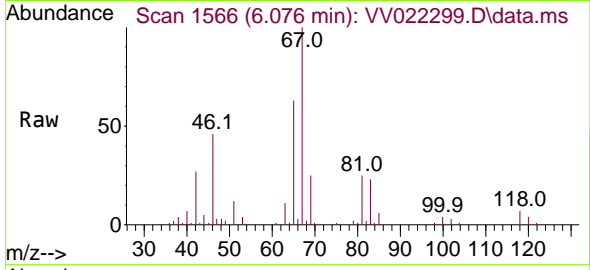




#37
 1,2-Dichloropropane
 Concen: 0.729 ug/L
 RT: 6.076 min Scan# 1566
 Delta R.T. -0.100 min
 Lab File: VV022299.D
 Acq: 23 Sep 2021 21:47

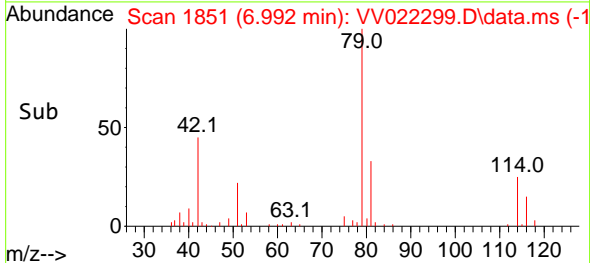
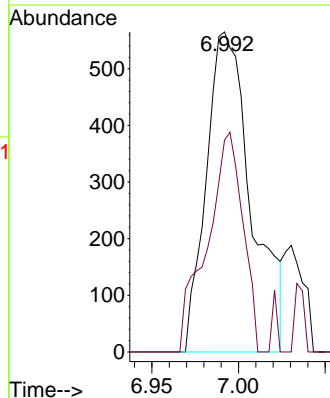
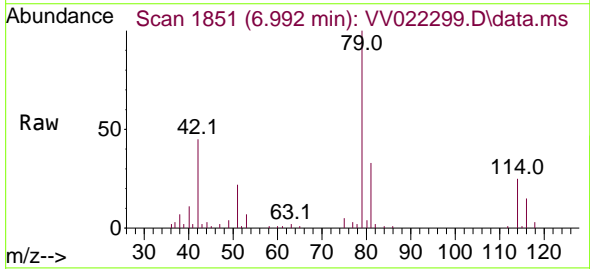
Instrument :
 MSVOA_V
 ClientSampled :

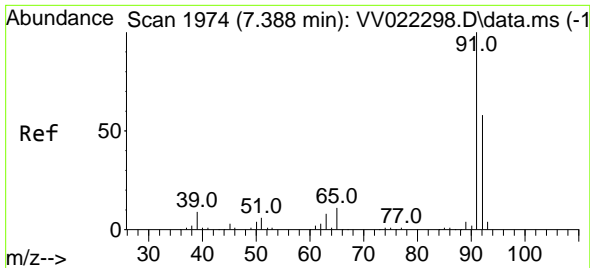
Tgt Ion: 63 Resp: 5836
 Ion Ratio Lower Upper
 63 100
 112 0.0 4.2 6.2#



#39
 cis-1,3-Dichloropropene
 Concen: 0.097 ug/L
 RT: 6.992 min Scan# 1851
 Delta R.T. -0.039 min
 Lab File: VV022299.D
 Acq: 23 Sep 2021 21:47

Tgt Ion: 75 Resp: 1025
 Ion Ratio Lower Upper
 75 100
 77 66.2 22.8 42.4#

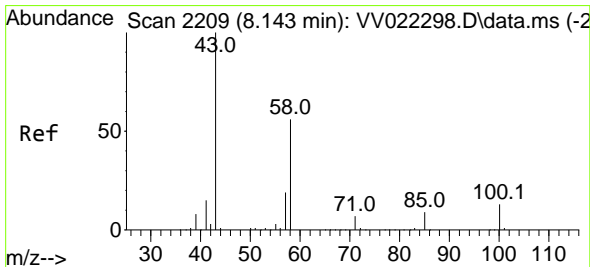
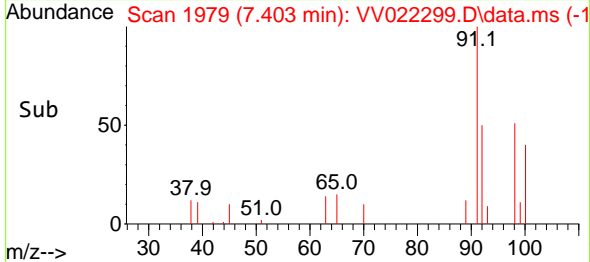
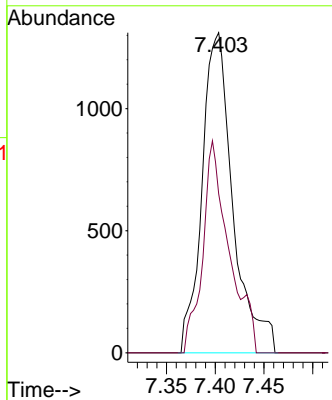
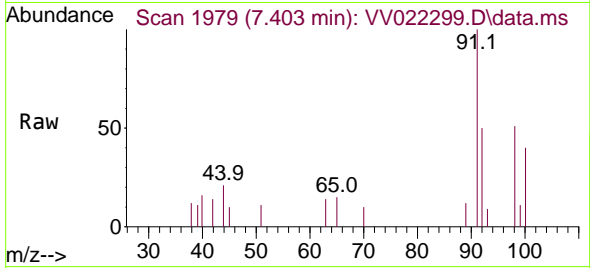




#42
 Toluene
 Concen: 0.086 ug/L
 RT: 7.403 min Scan# 1979
 Delta R.T. 0.016 min
 Lab File: VV022299.D
 Acq: 23 Sep 2021 21:47

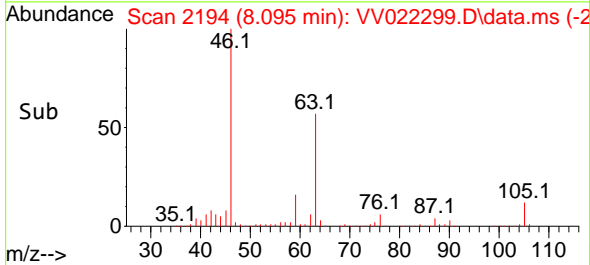
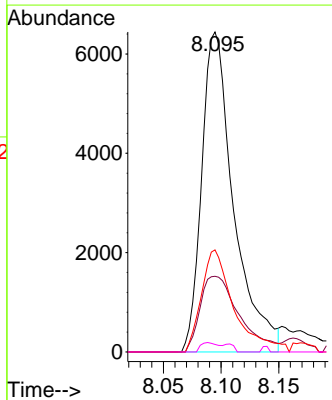
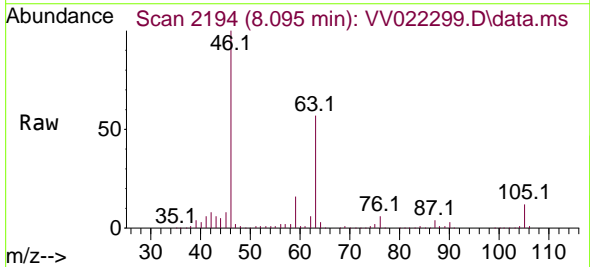
Instrument :
 MSVOA_V
 ClientSampled :

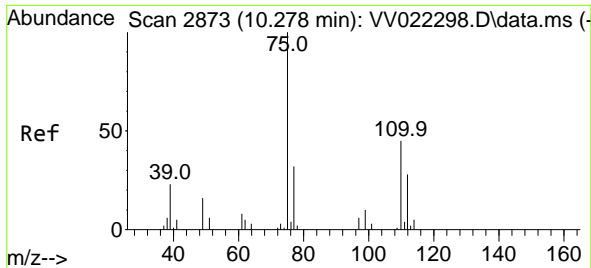
Tgt Ion: 91 Resp: 2893
 Ion Ratio Lower Upper
 91 100
 92 49.7 40.6 75.4



#48
 2-Hexanone
 Concen: 3.427 ug/L
 RT: 8.095 min Scan# 2194
 Delta R.T. -0.048 min
 Lab File: VV022299.D
 Acq: 23 Sep 2021 21:47

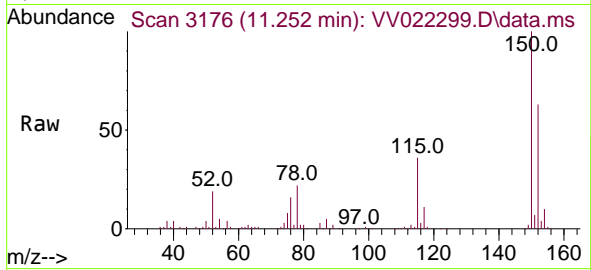
Tgt Ion: 43 Resp: 12421
 Ion Ratio Lower Upper
 43 100
 58 29.0 44.1 66.1#
 57 32.5 14.2 21.4#
 100 1.7 10.0 15.0#





#61
 1,2,3-Trichloropropane
 Concen: 1.437 ug/L
 RT: 11.252 min Scan# 3176
 Delta R.T. 0.974 min
 Lab File: VV022299.D
 Acq: 23 Sep 2021 21:47

Instrument :
 MSVOA_V
 ClientSampled :



Tgt Ion: 75 Resp: 6474

Ion	Ratio	Lower	Upper
75	100		
77	31.0	25.5	38.3
110	2.1	31.7	47.5#

