

Data Path : Z:\voasrv\HPCHEM1\MSVOA\_V\Data\VW092321\  
 Data File : VW022301.D  
 Acq On : 23 Sep 2021 22:36  
 Operator : SY/MD  
 Sample : M3878-11  
 Misc : 25.0mL/MSVOA\_V/WATER  
 ALS Vial : 32 Sample Multiplier: 1

**Instrument :**  
 MSVOA\_V  
**ClientSampled :**  
 EW2P4

Quant Time: Sep 24 05:11:09 2021  
 Quant Method : Z:\voasrv\HPCHEM1\MSVOA\_V\Method\SFAMVTR092321WMA.M  
 Quant Title : TRACE VOA SFAM1.0  
 QLast Update : Fri Sep 24 05:07:58 2021  
 Response via : Initial Calibration

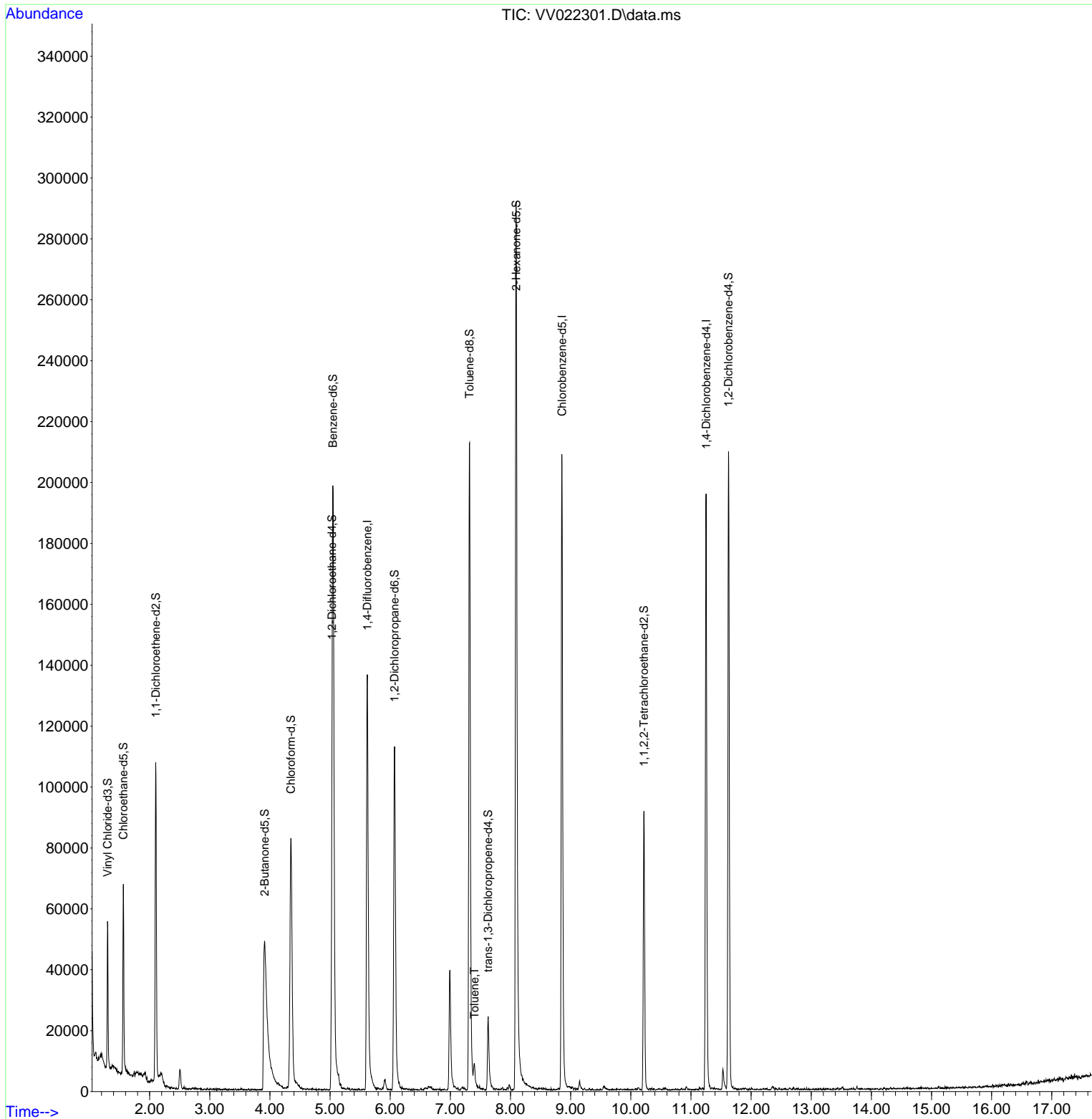
Compound	R.T.	QIon	Response	Conc	Units	Dev(Min)
-----						
Internal Standards						
1) 1,4-Difluorobenzene	5.619	114	124664	5.000	ug/L	0.00
28) Chlorobenzene-d5	8.857	117	122935	5.000	ug/L	0.00
58) 1,4-Dichlorobenzene-d4	11.252	152	52366	5.000	ug/L	0.00
System Monitoring Compounds						
4) Vinyl Chloride-d3	1.301	65	29398	4.680	ug/L	0.00
Spiked Amount	5.000	Range 40 - 130	Recovery	=	93.600%	
7) Chloroethane-d5	1.564	69	37047	5.040	ug/L	0.00
Spiked Amount	5.000	Range 65 - 130	Recovery	=	100.800%	
11) 1,1-Dichloroethene-d2	2.101	63	54073	3.610	ug/L	0.00
Spiked Amount	5.000	Range 60 - 125	Recovery	=	72.200%	
20) 2-Butanone-d5	3.912	46	134591	52.431	ug/L	0.00
Spiked Amount	50.000	Range 40 - 130	Recovery	=	104.860%	
24) Chloroform-d	4.349	84	86563	4.805	ug/L	0.00
Spiked Amount	5.000	Range 70 - 125	Recovery	=	96.000%	
26) 1,2-Dichloroethane-d4	5.034	65	44180	5.132	ug/L	0.00
Spiked Amount	5.000	Range 70 - 130	Recovery	=	102.600%	
32) Benzene-d6	5.050	84	176265	5.099	ug/L	0.00
Spiked Amount	5.000	Range 70 - 125	Recovery	=	102.000%	
36) 1,2-Dichloropropane-d6	6.072	67	58374	5.407	ug/L	0.00
Spiked Amount	5.000	Range 60 - 140	Recovery	=	108.200%	
41) Toluene-d8	7.320	98	145397	4.658	ug/L	0.00
Spiked Amount	5.000	Range 70 - 130	Recovery	=	93.200%	
43) trans-1,3-Dichloroprop...	7.628	79	14189	4.303	ug/L	0.00
Spiked Amount	5.000	Range 55 - 130	Recovery	=	86.000%	
46) 2-Hexanone-d5	8.095	63	108124	52.742	ug/L	0.00
Spiked Amount	50.000	Range 45 - 130	Recovery	=	105.480%	
56) 1,1,2,2-Tetrachloroeth...	10.220	84	42927	4.723	ug/L	0.00
Spiked Amount	5.000	Range 65 - 120	Recovery	=	94.400%	
66) 1,2-Dichlorobenzene-d4	11.625	152	55483	5.645	ug/L	0.00
Spiked Amount	5.000	Range 80 - 120	Recovery	=	113.000%	
Target Compounds						
42) Toluene	7.400	91	5658	0.165	ug/L	93
-----						

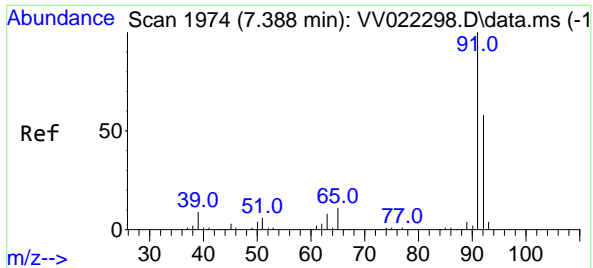
(#) = qualifier out of range (m) = manual integration (+) = signals summed

Data Path : Z:\voasrv\HPCHEM1\MSVOA\_V\Data\VV092321\  
 Data File : VV022301.D  
 Acq On : 23 Sep 2021 22:36  
 Operator : SY/MD  
 Sample : M3878-11  
 Misc : 25.0mL/MSVOA\_V/WATER  
 ALS Vial : 32 Sample Multiplier: 1

Instrument :  
 MSVOA\_V  
 ClientSampled :  
 EW2P4

Quant Time: Sep 24 05:11:09 2021  
 Quant Method : Z:\voasrv\HPCHEM1\MSVOA\_V\Method\SFAMVTR092321WMA.M  
 Quant Title : TRACE VOA SFAM1.0  
 QLast Update : Fri Sep 24 05:07:58 2021  
 Response via : Initial Calibration





#42  
 Toluene  
 Concen: 0.165 ug/L  
 RT: 7.400 min Scan# 1978  
 Delta R.T. 0.013 min  
 Lab File: VV022301.D  
 Acq: 23 Sep 2021 22:36

Instrument :  
 MSVOA\_V  
 ClientSampled :  
 EW2P4

Tgt Ion: 91 Resp: 5658  
 Ion Ratio Lower Upper  
 91 100  
 92 52.5 40.6 75.4

