

Data Path : Z:\voasrv\HPCHEM1\MSVOA_V\Data\VW092321\
 Data File : VW022305.D
 Acq On : 24 Sep 2021 00:14
 Operator : SY/MD
 Sample : M3878-07
 Misc : 25.0mL/MSVOA_V/WATER
 ALS Vial : 36 Sample Multiplier: 1

Instrument :
 MSVOA_V
 ClientSampleId :
 EW2N5

Integration Parameters: rteint.p
 Integrator: RTE
 Smoothing : ON Filtering: 5
 Sampling : 1 Min Area: 3 % of largest Peak
 Start Thrs: 0.1 Max Peaks: 100
 Stop Thrs : 0 Peak Location: TOP

If leading or trailing edge < 100 prefer < Baseline drop else tangent >
 Peak separation: 5

Method : Z:\voasrv\HPCHEM1\MSVOA_V\Method\SFAMVTR092321WMA.M
 Title : TRACE VOA SFAM1.0

Signal : TIC: VW022305.D\data.ms

peak #	R.T. min	first scan	max scan	last scan	PK TY	peak height	corr. area	corr. % max.	% of total
1	1.304	76	82	93	rVB	49778	52844	9.31%	1.359%
2	1.565	155	163	175	rBV	58795	69436	12.24%	1.786%
3	2.105	320	331	345	rBV	105061	148057	26.09%	3.809%
4	3.909	878	892	925	rBV2	54745	214918	37.87%	5.528%
5	4.352	1013	1030	1052	rBV	84340	209329	36.89%	5.385%
6	5.050	1230	1247	1276	rBV2	195567	495676	87.35%	12.751%
7	5.619	1412	1424	1445	rBV	126581	265708	46.83%	6.835%
8	6.072	1552	1565	1598	rBV2	113557	242202	42.68%	6.230%
9	6.992	1838	1851	1867	rBV	37887	73559	12.96%	1.892%
10	7.320	1939	1953	1971	rBV	210044	382285	67.37%	9.834%
11	7.629	2039	2049	2069	rBV	22816	45414	8.00%	1.168%
12	8.092	2183	2193	2230	rBV	301215	567444	100.00%	14.597%
13	8.854	2420	2430	2459	rBV	197265	336293	59.26%	8.651%
14	10.220	2844	2855	2873	rBV	95142	147450	25.98%	3.793%
15	11.252	3164	3176	3195	rBV	186761	293019	51.64%	7.538%
16	11.538	3256	3265	3277	rBV5	5057	9965	1.76%	0.256%
17	11.628	3281	3293	3310	rVV	209655	333858	58.84%	8.588%

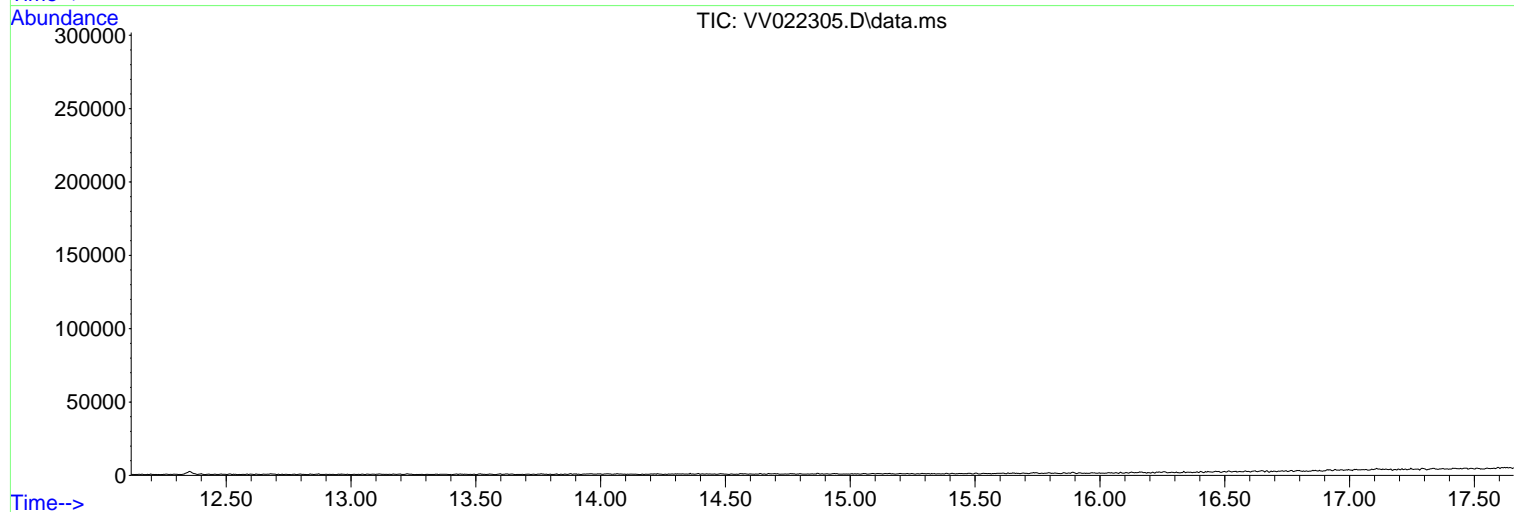
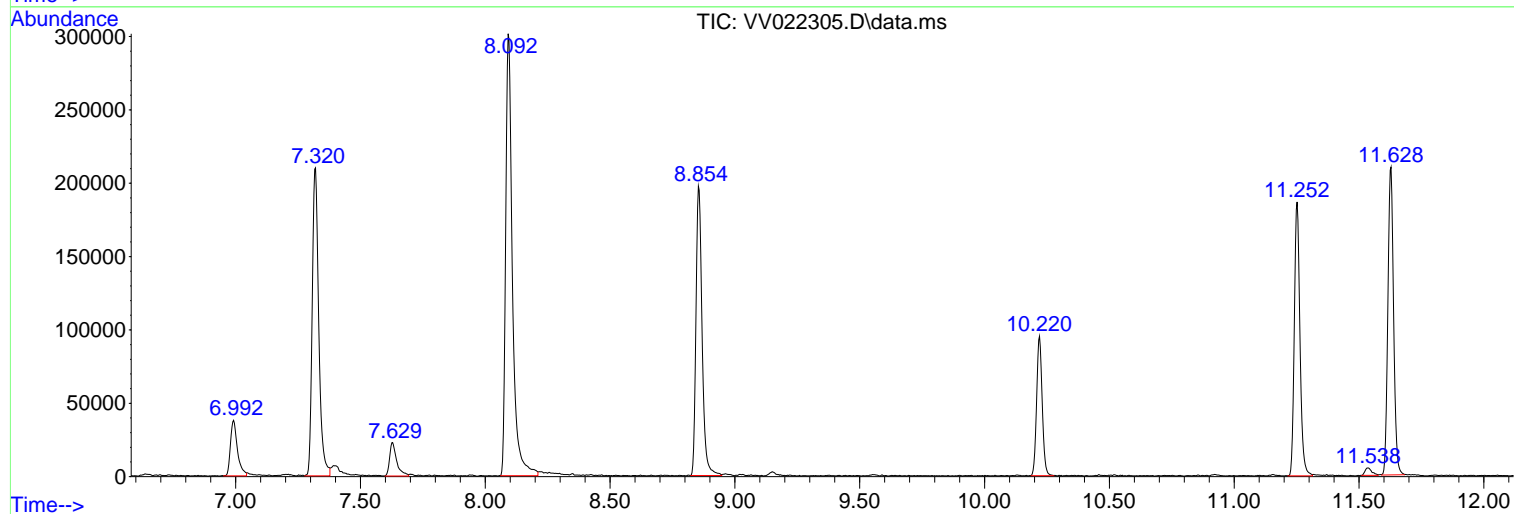
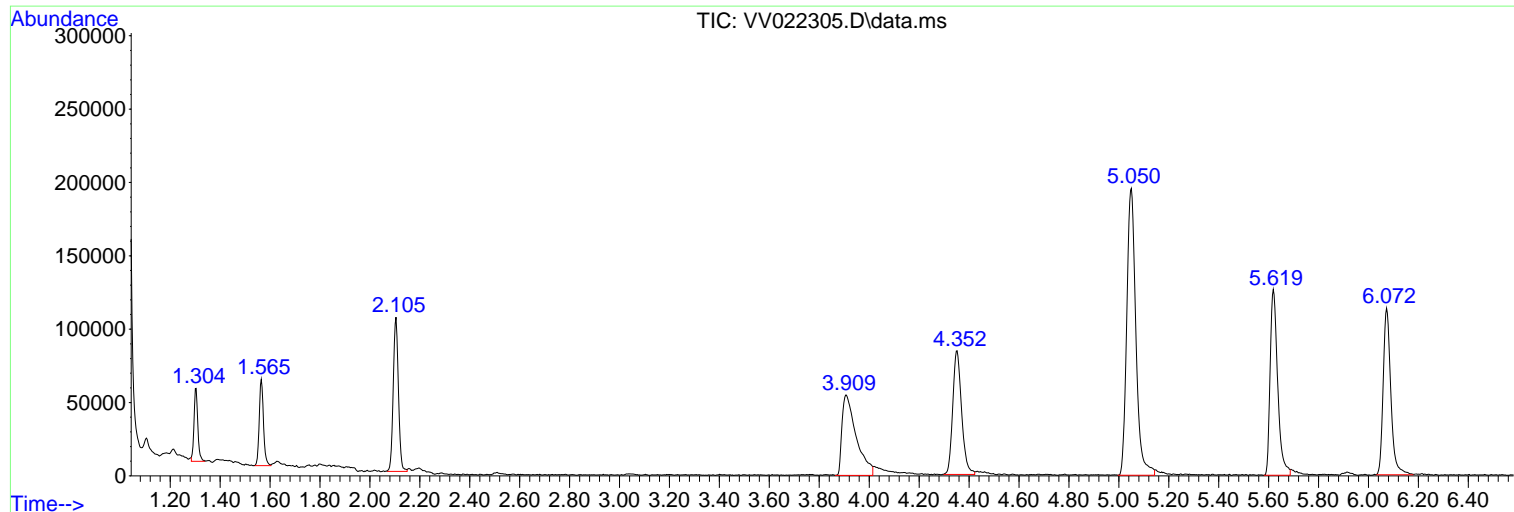
Sum of corrected areas: 3887457

Data Path : Z:\voasrv\HPCHEM1\MSVOA_V\Data\VV092321\
Data File : VV022305.D
Acq On : 24 Sep 2021 00:14
Operator : SY/MD
Sample : M3878-07
Misc : 25.0mL/MSVOA_V/WATER
ALS Vial : 36 Sample Multiplier: 1

Instrument :
MSVOA_V
ClientSampled :
EW2N5

Quant Method : Z:\voasrv\HPCHEM1\MSVOA_V\Method\SFAMVTR092321WMA.M
Quant Title : TRACE VOA SFAM1.0

TIC Library : C:\Database\NIST20.L
TIC Integration Parameters: LSCINT.P



Data Path : Z:\voasrv\HPCHEM1\MSVOA_V\Data\VW092321\
Data File : VW022305.D
Acq On : 24 Sep 2021 00:14
Operator : SY/MD
Sample : M3878-07
Misc : 25.0mL/MSVOA_V/WATER
ALS Vial : 36 Sample Multiplier: 1

Instrument :
MSVOA_V
ClientSampleId :
EW2N5

Quant Method : Z:\voasrv\HPCHEM1\MSVOA_V\Method\SFAMVTR092321WMA.M
Quant Title : TRACE VOA SFAM1.0

TIC Library : C:\Database\NIST0.L
TIC Integration Parameters: LSCINT.P

No Library Search Compounds Detected

Data Path : Z:\voasrv\HPCHEM1\MSVOA_V\Data\VV092321\
Data File : VV022305.D
Acq On : 24 Sep 2021 00:14
Operator : SY/MD
Sample : M3878-07
Misc : 25.0mL/MSVOA_V/WATER
ALS Vial : 36 Sample Multiplier: 1

Instrument :
MSVOA_V
ClientSampled :
EW2N5

Quant Method : Z:\voasrv\HPCHEM1\MSVOA_V\Method\SFAMVTR092321WMA.M
Quant Title : TRACE VOA SFAM1.0

TIC Library : C:\Database\NIST0.L
TIC Integration Parameters: LSCINT.P

TIC Top Hit name	RT	EstConc	Units	Response	--Internal Standard--		
					#	RT	Resp Conc
